

Oracle Insurance

**Insbridge Enterprise
Rating**

**SoftRater Node for
Windows Installation**

Release 4.9

December 2014

Copyright © 2005, 2014, Oracle and/or its affiliates. All rights reserved.

Oracle Insurance Insbridge Enterprise Rating SoftRater Node for Windows Installation Guide

Release 4.9.0

Part # E58863-01

Library # E58885-01

December 2014

Primary Authors: Mary Elizabeth Wiger

This software and related documentation are provided under a license agreement containing restrictions on use and disclosure and are protected by intellectual property laws. Except as expressly permitted in your license agreement or allowed by law, you may not use, copy, reproduce, translate, broadcast, modify, license, transmit, distribute, exhibit, perform, publish, or display any part, in any form, or by any means. Reverse engineering, disassembly, or decompilation of this software, unless required by law for interoperability, is prohibited.

The information contained herein is subject to change without notice and is not warranted to be error-free. If you find any errors, please report them to us in writing.

If this is software or related documentation that is delivered to the U.S. Government or anyone licensing it on behalf of the U.S. Government, the following notice is applicable:

U.S. GOVERNMENT END USERS: Oracle programs, including any operating system, integrated software, any programs installed on the hardware, and/or documentation, delivered to U.S. Government end users are "commercial computer software" pursuant to the applicable Federal Acquisition Regulation and agency-specific supplemental regulations. As such, use, duplication, disclosure, modification, and adaptation of the programs, including any operating system, integrated software, any programs installed on the hardware, and/or documentation, shall be subject to license terms and license restrictions applicable to the programs. No other rights are granted to the U.S. Government.

This software or hardware is developed for general use in a variety of information management applications. It is not developed or intended for use in any inherently dangerous applications, including applications that may create a risk of personal injury. If you use this software or hardware in dangerous applications, then you shall be responsible to take all appropriate fail-safe, backup, redundancy, and other measures to ensure its safe use. Oracle Corporation and its affiliates disclaim any liability for any damages caused by use of this software or hardware in dangerous applications. Oracle and Java are registered trademarks of Oracle and/or its affiliates. Other names may be trademarks of their respective owners.

Intel and Intel Xeon are trademarks or registered trademarks of Intel Corporation. All SPARC trademarks are used under license and are trademarks or registered trademarks of SPARC International, Inc. AMD, Opteron, the AMD logo, and the AMD Opteron logo are trademarks or registered trademarks of Advanced Micro Devices. UNIX is a registered trademark of The Open Group.

This software or hardware and documentation may provide access to or information on content, products, and services from third parties. Oracle Corporation and its affiliates are not responsible for and expressly disclaim all warranties of any kind with respect to third-party content, products, and services. Oracle Corporation and its affiliates will not be responsible for any loss, costs, or damages incurred due to your access to or use of third-party content, products, or services.

CONTENTS

| | |
|---|-----------|
| PREFACE | 6 |
| SOFRATER NODE..... | 6 |
| AUDIENCE | 6 |
| PLANNING YOUR INSBRIDGE SYSTEM..... | 6 |
| TYPES OF INSTALLATION | 6 |
| <i>Definitions</i> | 7 |
| RELATE DOCUMENTS | 8 |
| CONVENTIONS | 9 |
| <i>Manual History</i> | 9 |
| CHAPTER 1..... | 10 |
| SYSTEM REQUIREMENTS..... | 10 |
| <i>Required Components</i> | 10 |
| <i>Oracle Software Delivery Cloud</i> | 11 |
| QUICK VIEW..... | 13 |
| SOFRATER FOR WINDOWS INSTALLATION | 13 |
| CHAPTER 2..... | 14 |
| SETTING UP WINDOWS..... | 14 |
| ADMINISTRATIVE USER ACCOUNTS | 14 |
| FILE PERMISSIONS..... | 14 |
| <i>Extended Permission Required by the Insbridge User</i> | 15 |
| <i>Insbridge User Password</i> | 15 |
| <i>Installer Permissions</i> | 15 |
| DATABASE USER ROLES AND PERMISSIONS..... | 15 |
| STEP 1: INSBRIDGE LOCAL USER ACCOUNT SETUP | 17 |
| STEP 2: WINDOWS 2008 PERMISSIONS | 19 |
| STEP 3: ALLOWING FOR WCF ACTIVATION..... | 21 |
| STEP 4: VERIFY OR INSTALL .NET 4.5 | 22 |
| STEP 5: MICROSOFT SQL SERVER..... | 24 |
| CHAPTER 3..... | 25 |
| SOFRATER FOR WINDOWS NODE INSTALLATION..... | 25 |
| STEP 1: INSTALL INSBRIDGE ENTERPRISE RATING | 26 |
| STEP 2: CONFIGURING REGISTRY ACCESS..... | 33 |
| <i>Assigning Permissions for the Registry Access</i> | 33 |
| STEP 3: INSBRIDGE APPLICATION POOL | 36 |
| STEP 4: ASSIGNING PERMISSIONS – WINDOWS TEMP FOLDER | 37 |
| STEP 5: ASSIGNING PERMISSIONS – INSBRIDGE FOLDER | 39 |

| | |
|---|-----------|
| STEP 6: RESTORING A SOFTRATER DATABASE | 41 |
| STEP 7: CONFIGURING INSBRIDGE FRAMEWORK ADMINISTRATOR | 45 |
| <i>Logging in to IBFA</i> | 45 |
| <i>Updating IBFA Security</i> | 46 |
| <i>Entering Company Information</i> | 48 |
| STEP 8: VERIFYING THE COMPONENT SERVICES | 55 |
| STEP 9: INSTALLING THE OBI PUBLISHER..... | 58 |
| <i>OBI Security</i> | 59 |
| <i>Updating OBI Publisher Password</i> | 60 |
| STEP 10: STARTING INSBRIDGE SERVICES | 61 |
| STEP 11: IMPORT INSBRIDGE REGISTRY KEY | 62 |
| STEP 12: CONNECTING SR-WIN TO THE IBFA..... | 63 |
| SUPPORT..... | 65 |
| CONTACTING SUPPORT | 65 |
| INDEX..... | 66 |

LIST OF FIGURES

| | |
|--|----|
| Figure 1 Creating New User | 17 |
| Figure 2 Adding User information..... | 18 |
| Figure 3 Windows 2008 Web Server Roles | 19 |
| Figure 4 Adding IIS 6 Metabase Compatibility | 20 |
| Figure 5 Selecting WCF Activation..... | 21 |
| Figure 6 Verifying .NET Framework 3.5.1 Features..... | 22 |
| Figure 7 Verifying .NET 4.5 in Registry | 23 |
| Figure 8 Install as Administrator..... | 26 |
| Figure 9 Installing Insbridge | 27 |
| Figure 10 Entering the Destination Folder for Insbridge | 28 |
| Figure 11 Logon Information | 29 |
| Figure 12 Selecting Features for Installation..... | 30 |
| Figure 13 Ready to Install..... | 31 |
| Figure 14 Installation Progress..... | 31 |
| Figure 15 Install ReadMe Screen..... | 32 |
| Figure 16 Configure Registry Access Windows Server..... | 33 |
| Figure 17 Entering the User | 34 |
| Figure 18 Applying Permissions..... | 35 |
| Figure 19 Assigning Permissions for the Insbridge User on Windows Temp | 37 |
| Figure 20 Temp File Properties | 38 |
| Figure 21 Assigning Permissions for the Insbridge User on Insbridge | 39 |
| Figure 22 Insbridge Folder Properties..... | 40 |
| Figure 23 Restoring a Database to SQL Server..... | 42 |
| Figure 24 Right Click to Restore Database | 42 |
| Figure 25 Restoring a Database..... | 43 |
| Figure 26 IBFA Landing Page | 45 |
| Figure 27 IBFA Login Screen | 46 |
| Figure 28 Updating the Default Password..... | 47 |
| Figure 29 Selecting Security for IBFA | 47 |
| Figure 30 IBFA Home..... | 48 |
| Figure 31 Enter ID | 49 |
| Figure 32 Create a Rating Environment..... | 50 |
| Figure 33 Entering Name and Environment | 51 |
| Figure 34 Obtaining Environment Information..... | 51 |
| Figure 35 Editing Environment | 52 |
| Figure 36 Virtual File Server Management Screen | 53 |
| Figure 37 Virtual File Server Management Window..... | 54 |
| Figure 38 Component Services | 55 |
| Figure 39 Updating Com Plus to the Insbridge User..... | 56 |
| Figure 40 Installing OBI Publisher | 58 |
| Figure 41 OBI Publisher Credentials | 59 |
| Figure 42 Updating the OBI Publisher Password..... | 60 |
| Figure 43 Insbridge Services Screen | 61 |
| Figure 44 Create a Rating Environment..... | 63 |
| Figure 45 Entering Name and Environment | 64 |

PREFACE

Welcome to the *Oracle Insurance Insbridge Enterprise Rating SoftRater for Windows Node Installation Guide*. This guide describes how to install and configure a SoftRater for Windows Node. SoftRater may be used in conjunction with the Oracle Insurance Insbridge Enterprise Rating RateManager (RateManager) system to process rating requests or it may stand alone.

SOFTRATER NODE

A SoftRater for Windows installation is also called a SoftRater node installation. A SoftRater node is an IBFA instance on a machine that allows for packages to be copied and loaded from environment to environment. A SoftRater node installation is done on a Windows machine and utilizes a SQL Server database.

This type of install is like a Full RateManager Installation with the RateManager option set to not install. Also, a Virtual File Server will be set up to allow this machine to communicate with the RateManager machine.

This installation will be the same for the Production environment with a Virtual File Server set up to allow it to communicate with the QA machine.

SoftRater Nodes can be added any time after RateManager has been installed.

AUDIENCE

This guide is intended for technical personnel, such as installers, system administrators and others tasked with configuring SoftRater that would be involved in the maintenance and operation of SoftRater or RateManager. The audience for this guide should have a thorough knowledge of Windows.

PLANNING YOUR INSBRIDGE SYSTEM

Prior to installation, you should have an idea of the type of setup you want to create. What kind of equipment do you have available and how many environments do you need? If you do not have everything completely planned out, you can still proceed. Environments can be removed or added later on. The Oracle Insurance Insbridge Enterprise Rating system (Insbridge) is expandable and can accommodate a few different configurations.

For more on planning your Insbridge system, please see the Insbridge Implementation Guide.

TYPES OF INSTALLATION

There are various types of installations:

RateManager Installation

- **RateManager for Windows** – Installs RateManager and the Insbridge Framework Administrator (IBFA) in a Windows environment and utilizes IBFA for local rating. This Windows only environment uses a SQL Server database.

SoftRater Installation

- **SoftRater for Java Installation** – Deploys Insbridge SoftRater Server (IBSS) to an application server; WebLogic, WebSphere or JBoss, using a SQL Server database, or an Oracle database, or a DB2 database.
- **Full SoftRater for Windows Node** – This installation is for existing environments that want to add a SoftRater for Windows node to an environment. This is for a Windows only environment using a SQL Server database.

Upgrading a Current Installation

- **Upgrade** – This installation is for existing customers and will take their current version of Insbridge up to version 04.09.00.

This guide is for a Full SoftRater for Windows Node.

Definitions

Some commonly used terms when installing or using the Oracle Insurance Insbridge Enterprise Rating system:

- **IBER:** Insbridge Enterprise Rating System. This is the entire system.
- **IBFA:** Insbridge Framework Administrator. IBFA is an administrative tool used to configure Insbridge applications and setup RateManager database connections. IBFA will be located on a Windows Server machine. IBFA/SR-WIN is an Insbridge Framework Administrator/SoftRater for Windows.
- **IBSS:** Insbridge SoftRater Server. IBSS is the administrative tool for the SoftRater engine. The SoftRater engine is a multi-platform component within Insbridge that executes the rules, rating and underwriting instructions as defined by the user in RateManager. IBSS is usually located on a Java machine. IBSS/SR-JAVA is an Insbridge SoftRater Server/SoftRater for Java.
- **SoftRater Node:** A SoftRater node is either an IBFA (without RateManager) or IBSS instance on a physical environment.
- **SoftRater Native:** SoftRater Native is a remote instance of SoftRater that can execute rules and rating logic in environments where access via the SoftRater web-services is not desired or possible.

- **RM:** RateManager. RateManager is a component within Insbridge that enables users to manage the product definition and modification process, including rating and underwriting logic.
- **SR:** SoftRater. The engine that executes the rating, rules and underwriting instructions defined within RateManager. The rating environment for runtime execution and processing of business content. SoftRater can be further defined by the operating system where it has been loaded.
- **SR-WIN:** SoftRater for Windows. This is also another name for IBFA.
- **SR-JAVA:** SoftRater for Java. This is also another name for IBSS.
- **SRP:** SoftRater Packages. A package that holds all the RateManager logic for a specific program and version.
- **VFS:** Virtual File Servers. Virtual file server management allows you to access environments that are located on other machines in different locations where packages can be downloaded.
- **Package Location:** A pointer to a location where SoftRater Packages (SRP's) are stored.
- **Physical Environment:** A physical environment is generally referred to as a physical machine.
- **Authoring Environment:** The physical machine where RateManager is installed.
- **Rating Environment:** The physical machine(s) where SoftRater is installed. This is typically the same as a SoftRater node.
- **Logical Environment:** An environment created for a subscriber in IBFA. It defines package location, engine location and database location in addition to several other supporting data items. This environment is used for rating and/or SRP management. Each database connection will have a logical environment.

RELATE DOCUMENTS

For more information, refer to the following Oracle resources:

- The Oracle Insurance Insbridge Enterprise Rating Framework Administrator.
- The Oracle Insurance Insbridge Enterprise Rating SoftRater Server Guide.
- You can view these guides in-line at this address:

<http://www.oracle.com/technetwork/documentation/insurance-097481.html>

CONVENTIONS

The following text conventions are used in this document:

| Convention | Description |
|---------------|--|
| bold | Boldface type indicates graphical user interface elements associated with an action. |
| <i>italic</i> | Italic type indicates book titles, emphasis, or placeholder variables for which you supply particular values. |
| monospace | Monospace type indicates commands within a paragraph, URLs, code in examples, text that appears on the screen, or text that you enter. |

Manual History

New editions incorporate any updates issued since the previous edition.

| Edition | Publication Number | Product Version | Publication Date | Comment |
|-------------------------|--------------------|-----------------|------------------|-----------------|
| 1 st Edition | P01-703-01 | | May 2011 | Initial Release |
| 2 nd Edition | P01-703-02 | R 4.5.1 | September 2011 | Update Release |
| 3 rd Edition | P01-703-03 | R 4.6 | May 2012 | Update Release |
| 4 th Edition | P01-703-04 | R 4.6.1 | November 2012 | Update Release |
| 5 th Edition | P01-703-05 | R 4.7 | September 2013 | Update Release |
| 6 th Edition | P01-703-05 | R 4.7.1 | November 2013 | Update Release |
| 7 th Edition | P01-703-06 | R 4.8 | August 2014 | Update Release |
| 8 th Edition | P01-703-07 | R 4.9 | December 2014 | Update Release |

SYSTEM REQUIREMENTS

Insbridge installers should be familiar with managing a Windows server. The Insbridge installation is for a 64-bit system. 32-bit systems are no longer supported.

Required Components

The following components, web server roles, and features are required:

- **A full installation of Microsoft Windows Server 2008**
- **Microsoft .NET Framework version 4.5 with .NET 3.5.1 feature activation**
- **IIS: Internet Information Services version 6.0 or 7.0**
- **Web Server Role: IIS 6 Metabase Compatibility**
- **Web Server Role: (IIS) Static Content**
- **Web Server Role: ASP.NET**
- **MSMQ: Microsoft Message Queuing Services, basic functionality only.**
- **Insbridge User Account**
- **Database name or Environment name**
- **Database login information**
- **Database server name, either IP or DNS**
- **Database backup file, IBSR_Template for SQL Server. This file is located in the 04.09.00 Insbridge Insbridge folder.**
- **Access to the server where the Insbridge system was installed**
- **URL of the current IBFA**
- **Subscriber ID**
- **Package location where you want the packages stored**

These components will be needed at various times during the installation and implementation of SoftRater for Windows Nodes.

Oracle Software Delivery Cloud

Prior to installation, please make sure the source machine(s) where Insbridge will be loaded has an unzip utility. An unzip utility for most platforms is available on the Oracle Software Delivery Cloud download page.

Documentation from Oracle Software Delivery Cloud is in PDF format. Prior to installation, please make sure the source machine(s) where Insbridge documentation will be loaded has a PDF reader.

Files are downloaded with part numbers as file names. Please make note of the part numbers you have downloaded and the corresponding file name. You may be asked to provide the part numbers or the filename if you contact Oracle Insurance Support.

The installation downloads you can select are:

- **Insbridge Install:** Required for all RateManager installations. The Insbridge installation is for a 64-bit system.
- **SoftRater for WebSphere:** Required if you are using WebSphere
- **SoftRater for WebLogic:** Required if you are using WebLogic
- **SoftRater for JBoss:** Required if you are using JBoss
- **Documentation:** It is recommended that you download the documentation. Installation guides and user guides are located here.

The 04.09.00-Insbridge-Insbridge folder contents:

- **Databases**
 - ◆ DB2
 - SoftRater: IBSR
 - DDLs
 - Update: usp_IBSR_v04.07.00.db2
 - ◆ Oracle
 - SoftRater: IBSR
 - DDL
 - Update: usp_IBSR_v04.07.00.oracle
 - ◆ SQL Server
 - RateManager: IBRM
 - Latin1_General_BIN
 - DATABASE_BACKUP_IBRM_TEMPLATE_CASE_SENSITIVE.bak
 - SQL_Latin1_General_CP1_CI_AS
 - DATABASE_BACKUP_IBRM_TEMPLATE.bak
 - Security: IB_CLIENT
 - SQL_Latin1_General_CP1_CI_AS
 - DATABASE_BACKUP_IB_CLIENT_TEMPLATE.bak
 - SoftRater: IBSR
 - Latin1_General_BIN
 - DATABASE_BACKUP_IBSR_TEMPLATE_CASE_SENSITIVE.bak
 - SQL_Latin1_General_CP1_CI_AS
 - DATABASE_BACKUP_IBSR_TEMPLATE.bak
 - Update: usp_IBSR_v04.05.01.sql

- Update: usp_IBSR_v04.06.00.01.sql
- Update: usp_IBSR_v04.08.00.00.sql

- **IE7_IE8 Users**
 - ◆ Insbridge RateManager Setup Document PDF
 - ◆ RateManager_IE7_IE8.exe

- **Oracle BI Publisher**
 - ◆ OBI_PUBLISHER.exe

- **Oracle Client**
 - ◆ Oracle_client.exe

- **Oracle Insurance: Insbridge Enterprise Rating.exe**

No license file is required.

SoftRater for Windows can be installed any time after the Insbridge Framework Administrator and RateManager have been installed. SoftRater must be installed prior to any users creating packages.

The folders and files that you download will depend upon the kind of setup you want. Everything for an SR-WIN installation is in the **04.09.00-Insbridge-windows** folder. If you want to incorporate a Java environment, please download the corresponding SoftRater file.

Internet Explorer

IBSS and IBFA are accessed via web browser. Please verify that you are using Internet Explorer 8.0 or 9.0 (32-bit). As of release 04.09.xx, Internet Explorer 8.0 and 9.0 (64-bit) are not supported.

SOFTRATER FOR WINDOWS INSTALLATION

Installing SoftRater for Windows requires that you:

1. Set up Windows. There are three steps in setting up Windows for a RateManager deployment.
2. Install Insbridge using a SQL Server Database

Setting up Windows

Step 1: Set up an Insbridge User.

Step 2: Windows 2008 web server roles.

Step 3: Verify or install .NET 4.5.

Step 4: Verify SQL Server settings.

Installation Procedures: Full RateManager

Step 1: Install Insbridge Enterprise Rating

Step 2: Configuring Registry Access

Step 3: Creating an Insbridge Application Pool

Step 4: Assigning Permissions: Windows Temp Folder

Step 5: Assigning Permissions: Insbridge Folder

Step 6: Restoring IBSR Databases in SQL Server

Step 7: Configuring Insbridge Framework Administrator

Step 8: Verifying the Component Services

Step 9: Allowing for WCF Activation

Step 10: Installing the OBI Publisher

Step 11: Starting Insbridge Services

Step 12: Create Backup of Registry Key

Step 13: Connect IBSR to IBFA

SETTING UP WINDOWS

Insbridge installers should be familiar with managing a Windows server.

Windows Server should be up and running prior to RateManager being installed. There are a few steps that should be performed prior to the install:

- **Step 1:** Set up an Insbridge User. **This is a required step.**
- **Step 2:** Setting Windows 2008 web server roles.
- **Step 3:** Verify or install Windows 2008 features.
- **Step 4:** Verify or install .NET 4.5.
- **Step 5:** Verify SQL Server settings.

ADMINISTRATIVE USER ACCOUNTS

No administrative account is created when Insbridge is installed. An administrative user account must be created on the server where the Insbridge system is going to be installed. This required account is the Insbridge Local User Account.

The Insbridge Local User needs to be a member of the User group and requires certain privileges in order to fully control the entire Insbridge environment. For ease of installation and if the server is dedicated to the Insbridge Enterprise Rating System, this user can be added to the local machine Administrators group.

FILE PERMISSIONS

The Insbridge User requires read/write permissions on:

- The Windows Temp Folder. This is necessary for MSMQ.
- The Insbridge Application Pool Identity
- The Insbridge Folder

The Insbridge user must also be given **full control** over the following registry key:

- HKEY_LOCAL_MACHINE/SOFTWARE/Insbridge

Extended Permission Required by the Insbridge User

In order to start the Insbridge services from IBFA, the Insbridge user must be given full access to both the Insbridge Message Service and the Insbridge Task Manager Service. If the Insbridge user account will not have full administrative permissions on the server where the Insbridge Framework is installed, then certain operations from IBFA will not be available. A system administrator may be required to start the Insbridge services from the server.

Insbridge User Password

The password can be set to any password that meets your company standards. The Insbridge administrator must make note of the password for future configuration.

For ease of maintenance, the Insbridge user should not have to change the password and the password should never expire.

The installation automatically applies the Insbridge user name and password to the necessary libraries, virtual directories and, if used, Internet Proxy settings in IBFA. If you change the Insbridge user password, you will have to change the password in all three of the Insbridge Com+ libraries, all three of the Insbridge virtual directories and, if you are using it, the Internet Proxy settings in IBFA.

NOTE: Please note that if your company requires passwords to be re-set, you will have to make changes to the COM+ Application libraries, virtual directories and if you are using it, the Internet Proxy settings in IBFA after you change your password. You also may re-install the application. This recreates the COM+ applications, virtual directories and IBFA instance with the updated Insbridge user password. Be aware that re-installing the application may reset security settings in IBFA.

Installer Permissions

The installation program requires that the installer have administrator rights on the machine where the install is occurring. The install must be run as administrator.

NOTE: *If the Installer has permissions, an Insbridge User account can be created from within the install. If you create an Insbridge user from the install, you may not be able to set the permissions you need. Please be sure to verify the proper permissions are in place before continuing.*

DATABASE USER ROLES AND PERMISSIONS

If a more granular approach is required for management of security of the Insbridge databases, then the following guidelines can be used to set permissions.

NOTE: *These are only guidelines. If not properly configured, certain processes within the Insbridge Enterprise Rating System will fail. An experienced database administrator's expertise is highly recommended before making any security changes.*

An ibru account must be created for the Insbridge application.

Recommended SoftRater for Windows Permissions:

The recommended permissions are required for new tables to be created in the SoftRater (IBSR) database dynamically when or if a new line of business SRP (SoftRater Package) is loaded to the SoftRater system. If the recommended permissions are not possible, manual steps will need to be performed that will allow for packages to be loaded.

SoftRater can utilize SQL Server.

- **Insbridge SoftRater SQL Server Database.**

It is recommended that the Insbridge login be granted permission to connect to the database engine and be enabled. It is also recommended that the Insbridge login be mapped to the Insbridge database with the db_owner role checked.

It is recommended that the databases be on separate machines from the applications due to performance and security issues. The Insbridge applications and databases can be tenants in a larger setup.

It is recommended that db_owner permissions be given to the Insbridge user. This allows scripts to be run automatically when a new package is loaded for a new line of business. If this is not possible, DT scripts for each new line will have to be run manually before the package can be loaded.

JDBC Driver Class

“com.microsoft.jdbc.sqlserver.SQLServerDriver”

Supported Versions – 2008 R2 and 2012

User Account Requirements

Create Table

Create Index

Execute on the SoftRater User Defined Stored Procedures

STEP 1: INSRIDGE LOCAL USER ACCOUNT SETUP

Before starting the installation, create a local user account where the Insbridge Framework is being installed.

To Create a New User:

1. Select Start→Administrative Tools→Server Manager.
2. Select Configuration→Local Users and Groups.
3. Select Users.
4. Right click and select **New User**.

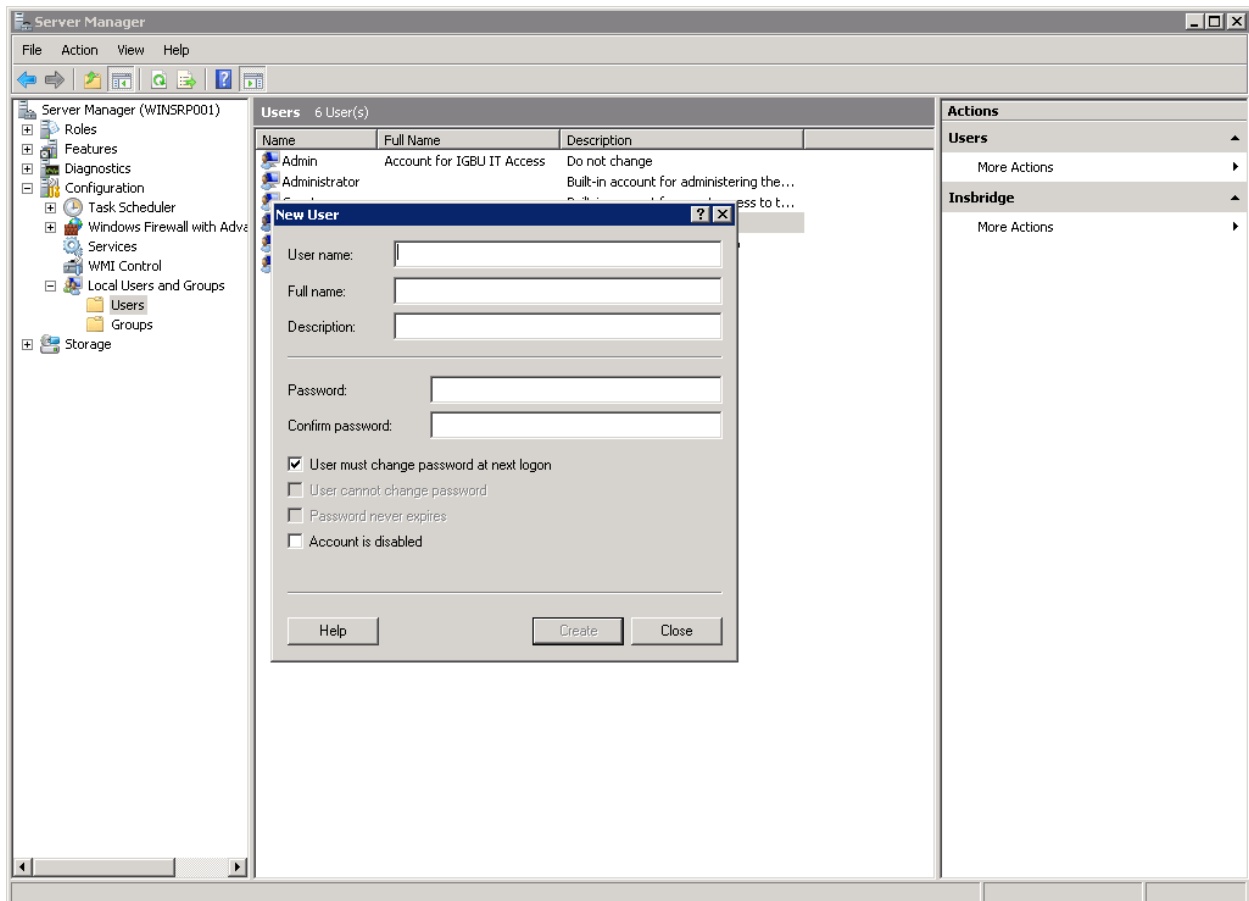


Figure 1 Creating New User

5. Add a new Insbridge user. Enter user name and password information. Uncheck *User must change password at next logon*. Check *User cannot change password* and *Password never expires*.
6. Click **Create**.

7. Close the Add New User screen and select the Insbridge user. Right click and select Properties.
8. The Insbridge User should be assigned to the local Users group and have the same permissions as the internet guest account.

Ideally, the Insbridge user should be added to the local Administrators group. If the Insbridge user cannot be a part of the local administrators groups, please make sure that the Insbridge user has permissions on the Insbridge Messaging Service and the Insbridge Task Manager Service.

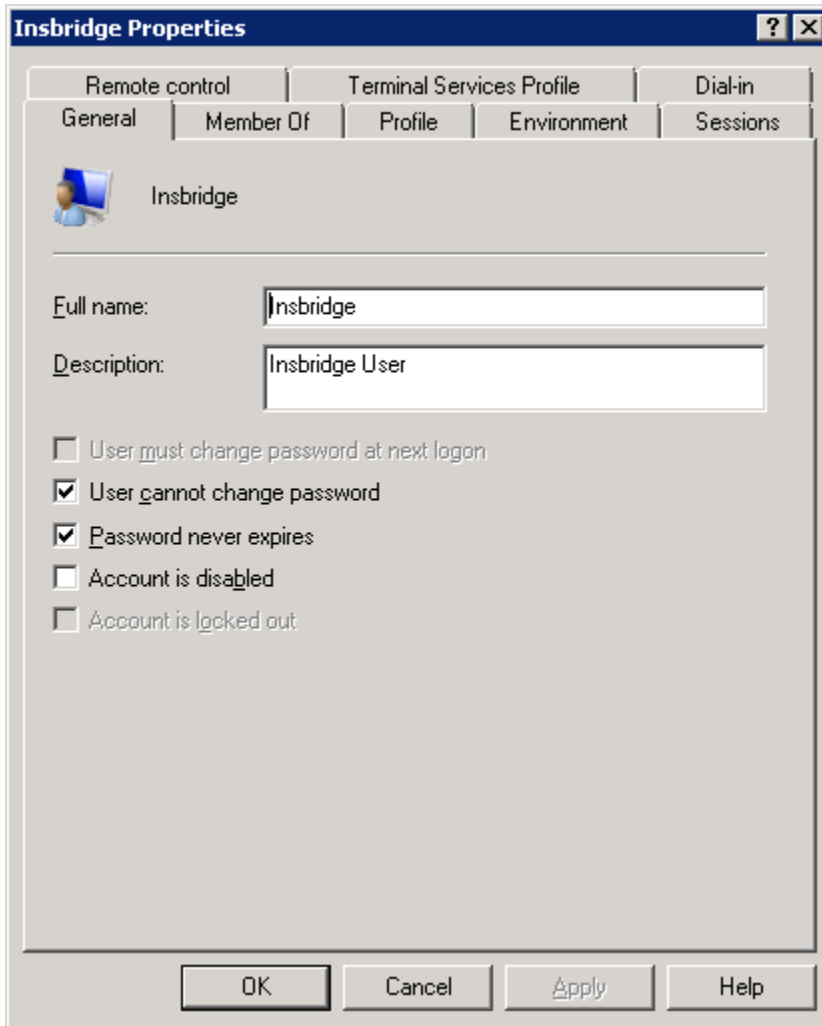


Figure 2 Adding User information

9. Click **OK**. Please keep the Insbridge user information close at hand. You will need it for the installation.

STEP 2: WINDOWS 2008 PERMISSIONS

Windows 2008 requires that certain web server roles are in place prior to running the install.

- **Web Server Role: IIS 6 Metabase Compatibility**
- **Web Server Role: (IIS) Static Content**
- **Web Server Role: ASP.NET**

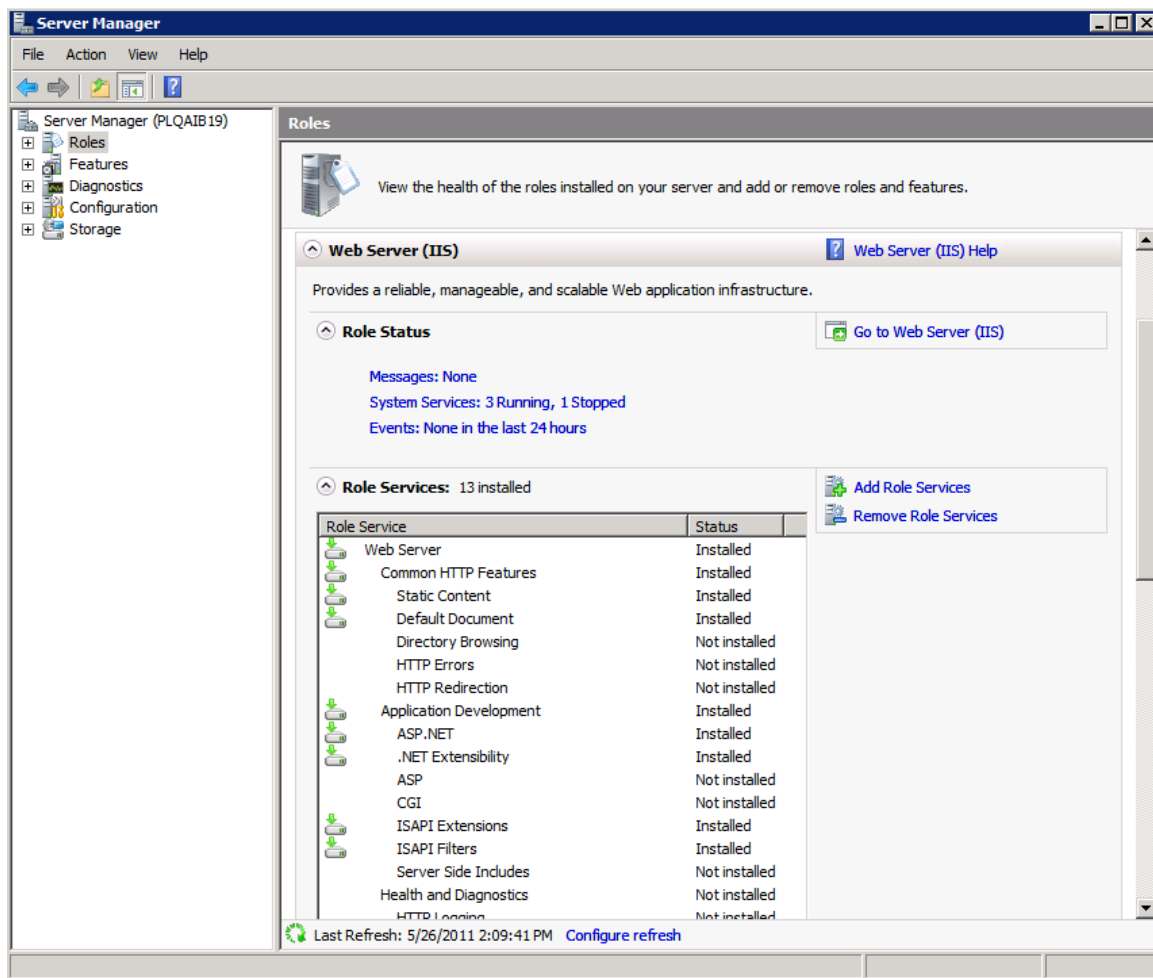


Figure 3 Windows 2008 Web Server Roles

To Add a Role:

1. Start → Administrative Tools → Server Manager → Roles → Web Server (IIS) → Add Role Services.

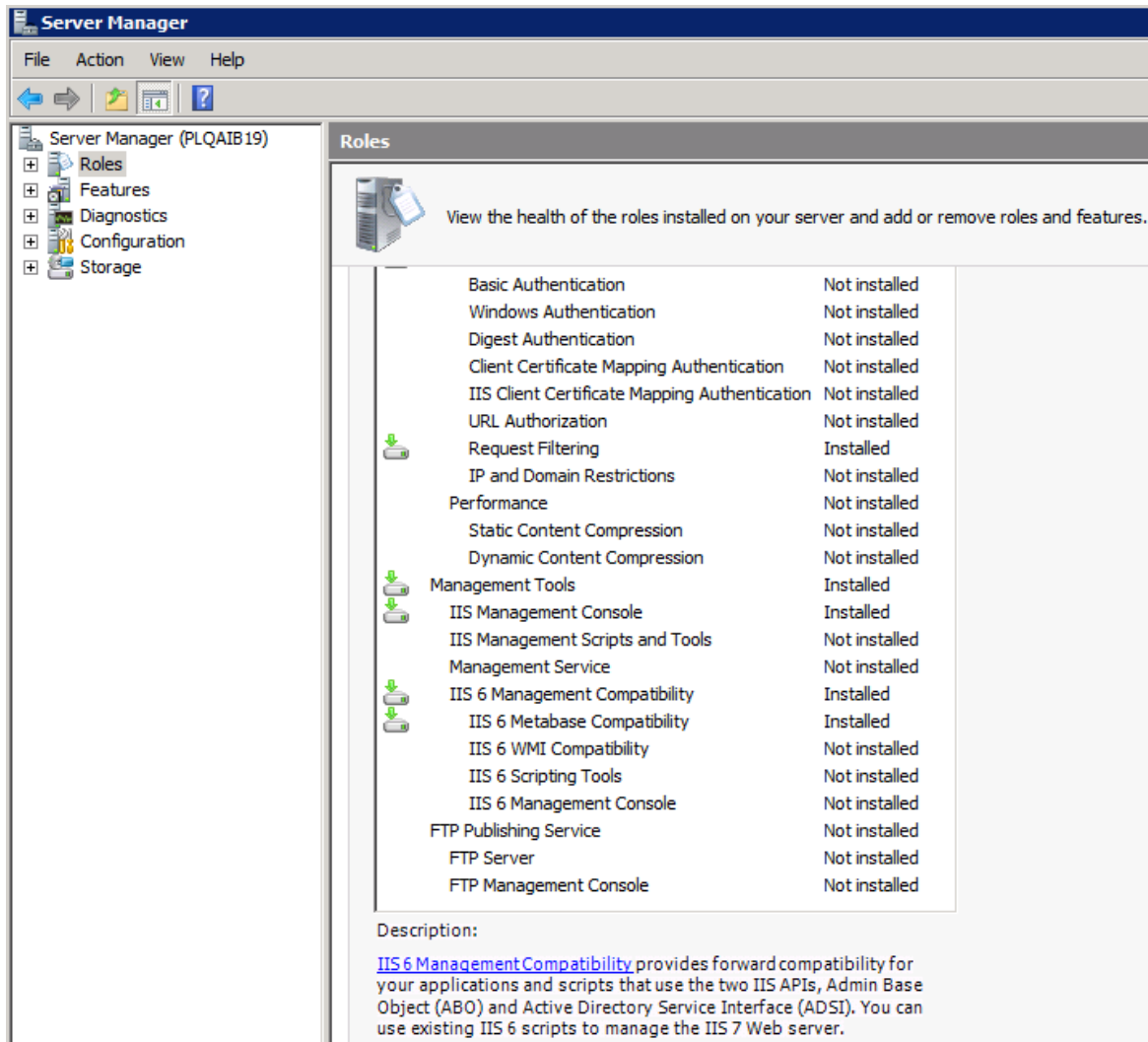


Figure 4 Adding IIS 6 Metabase Compatibility

2. Install IIS 6 Metabase Compatibility.
3. Install Static Content.
4. Install ASP.NET.
5. Close out when complete.

STEP 3: ALLOWING FOR WCF ACTIVATION

WCF Activation is required for web services. RateManager makes call using IBFA web services. If this is not activated, users will experience errors.

1. Select Start→Administrative Tools→Server Manager.
2. Select Features Summary. Scroll through the list to verify WCF Activation has been activated.

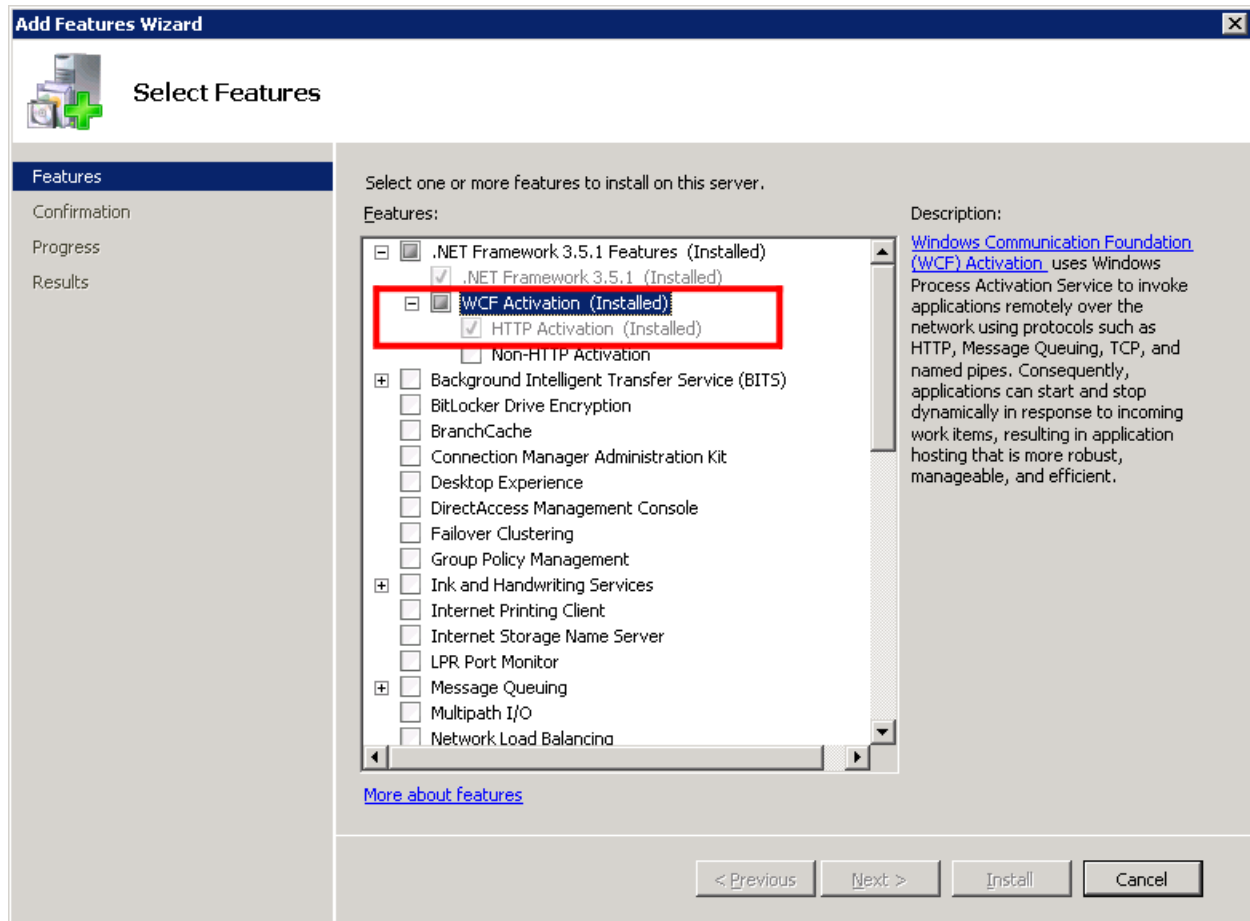


Figure 5 Selecting WCF Activation

3. If not, select Add Features. The Add Features Wizard is displayed.
4. Select WCF Activation. Click Next.
5. Confirm your selection and click Install. The installation will proceed.
6. Close out when complete.

STEP 4: VERIFY OR INSTALL .NET 4.5

.NET 4.5 requires .NET 3.5.1 features to be installed prior to installing .NET 4.5. Failure to use .NET 4.5 results in errors when accessing IBFA.

1. Select Start→Administrative Tools→Server Manager.
2. Select Features Summary. Scroll through the list to verify .NET Framework 3.5.1 Features has been installed.

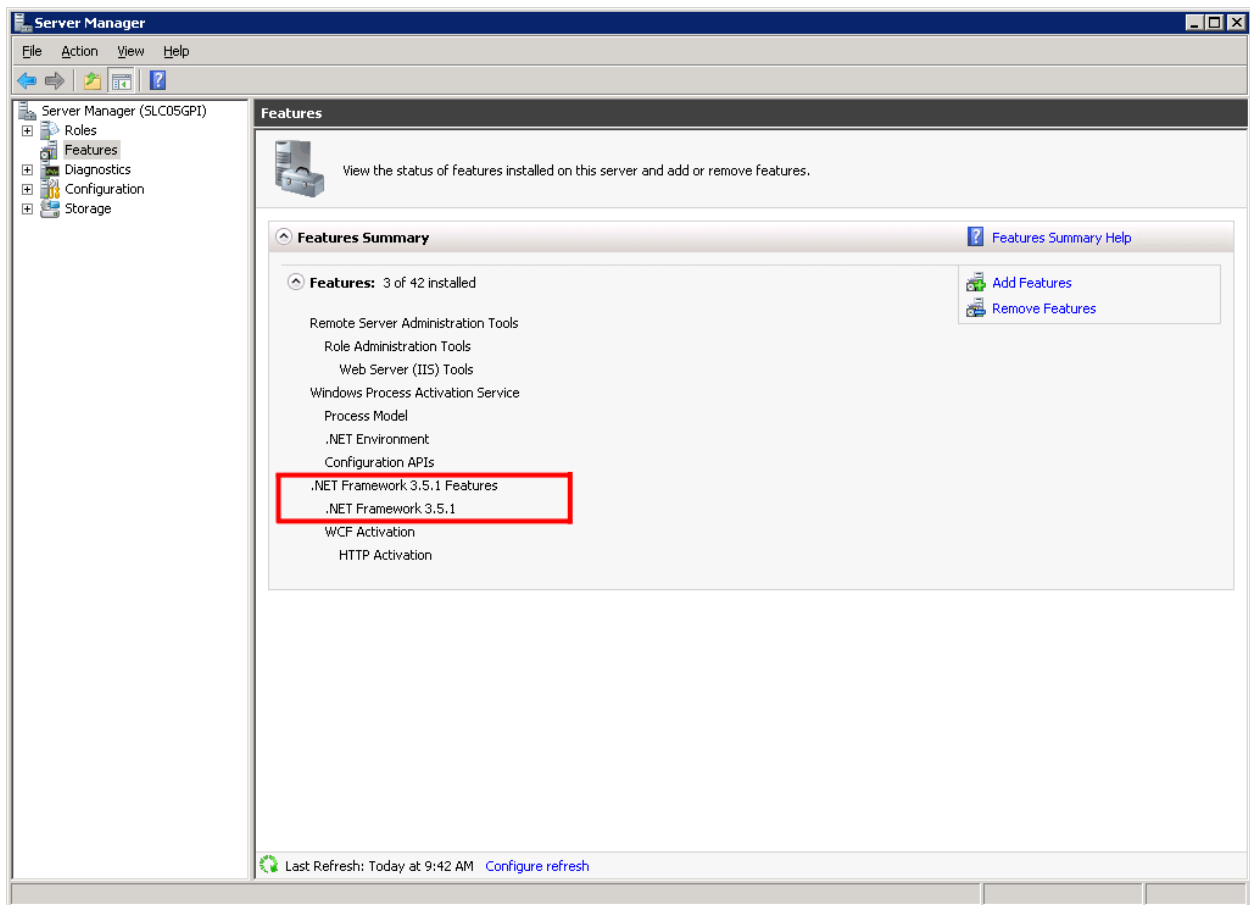


Figure 6 Verifying .NET Framework 3.5.1 Features

3. If not, select Add Features. The Add Features Wizard is displayed.
4. Select .NET Framework 3.5.1 Features. Click Next.
5. Confirm your selection and click Install. The installation will proceed.
6. You can close out when complete. To assure the registry gets updated with the .NET Framework 3.5.1, restart the system.

7. After you have verified the .NET Framework 3.5.1 Features, verify that .NET 4.5 has been installed by opening the registry file.
8. Select Run from the Start Menu.
9. Type regedt32. Click OK. The Registry Editor will open.
10. Browse to **HKEY_LOCAL_MACHINE→SOFTWARE→Microsoft→.NET Framework Setup→NDP→v4→Full.**

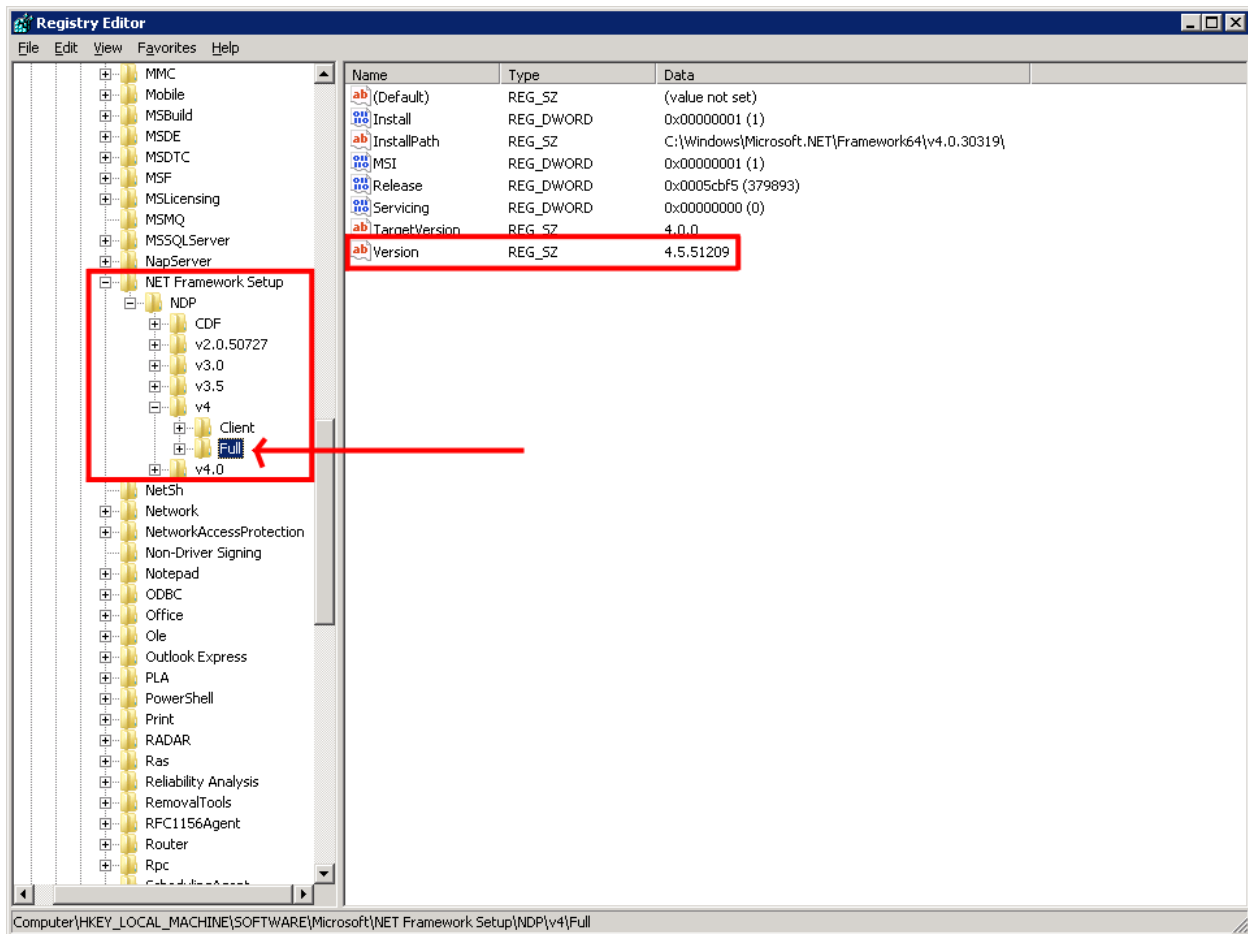


Figure 7 Verifying .NET 4.5 in Registry

11. The version should read 4.5. If v4 is not listed or the **Full** folder is not present, .NET 4.5 has not been installed. **Make sure to look at the v4 folder. DO NOT look at v4.0.**
12. If .NET 4.5 is installed, close out the registry and continue.
13. If .NET 4.5 is not installed, you must install before you can continue. .NET 4.5 must be installed prior to running the Insbridge installation.

NOTE: *.NET 4.5 is not included with the Insbridge installation. The .NET 4.5 download can be obtained from Microsoft.*

Troubleshooting

If you receive an error when accessing IBFA:

```
Could not load type 'System.ServiceModel.Activation.HttpModule' from
assembly 'System.ServiceModel, Version=3.0.0.0, Culture=neutral,
PublicKeyToken=b77a5c561934e089'
```

This error may happen when there are multiple versions of .NET Framework on a machine that is running IIS and did not get registered properly.

Please see [http://msdn.microsoft.com/en-us/library/hh169179\(v=nav.71\).aspx](http://msdn.microsoft.com/en-us/library/hh169179(v=nav.71).aspx) for more information.

STEP 5: MICROSOFT SQL SERVER

Microsoft SQL Server should not be installed on the same machine where the Insbridge web applications reside. The SQL Server should reside on a separate host from the Insbridge web front end with a properly configured network connection from the web server front end to SQL Server. Testing can be performed by using the Data Sources application in Administrative Tools to make a default connection to the database server.

NOTE: *All these settings are available during installation of SQL Server or by using SQL Server Enterprise Manager, and right clicking the server and selecting properties.*

If any of these settings conflict with existing application's databases residing on the SQL Server, then a separate instance is required.

Depending on the load expected, the databases can be placed on a separate SQL Server machines that can either be independent or shared as long as the following conditions are met.

- **Server Authentication:** Should be set to SQL Server and Windows Authentication mode.
- **Collation and Sort Order:** Currently supported is the default SQL Server collation using SQL_Latin1_General_CP1_CI_AS and sort order plus case sensitivity using Latin1_General_BIN as the server collation. The security database (IB_CLIENT) supports the default SQL Server collation using SQL_Latin1_General_CP1_CI_AS. The RateManager and SoftRater databases can use either case sensitive or non-case sensitive. Please check with Oracle Insurance for any questions regarding database server sort orders or collations.

NOTE: *For SQL Server, please make sure the SQL Server Client is installed.*

SOFTRATER FOR WINDOWS NODE INSTALLATION

This installation will install SoftRater for Windows. This is for a Windows only environment, using a SQL Server database.

Before installing, please verify that the system requirements are in place.

The installation should be performed in the following order:

1. Install the Insbridge application.
2. Assigning Insbridge access to the Registry.
3. Create an Insbridge Application Pool.
4. Assigning permissions to the Insbridge User for the Windows Temp Folder. This is necessary MSMQ. You also need to assign permissions to the Application Pool Identity.
5. Assigning permissions to the Insbridge User for the Insbridge Folder.
6. Creation of the IBSR database is next.
7. Enter IBFA and Configure:
 - a. Create a subscriber.
 - b. Create a SoftRater environment.
 - c. Creating a Virtual File Server.
8. Verifying Component Services.
9. Install OBI Publisher.
10. Start Insbridge Message Service.
11. Create Backup of Registry Key.
12. Connect IBSR to IBFA

Installation must be run as Administrator.

STEP 1: INSTALL INSBRIDGE ENTERPRISE RATING

1. Begin with the **Oracle Insurance - Insbridge Enterprise Rating Install file**.

NOTE: *The installation program requires that the installer have administrator rights on the machine where the install is occurring.*

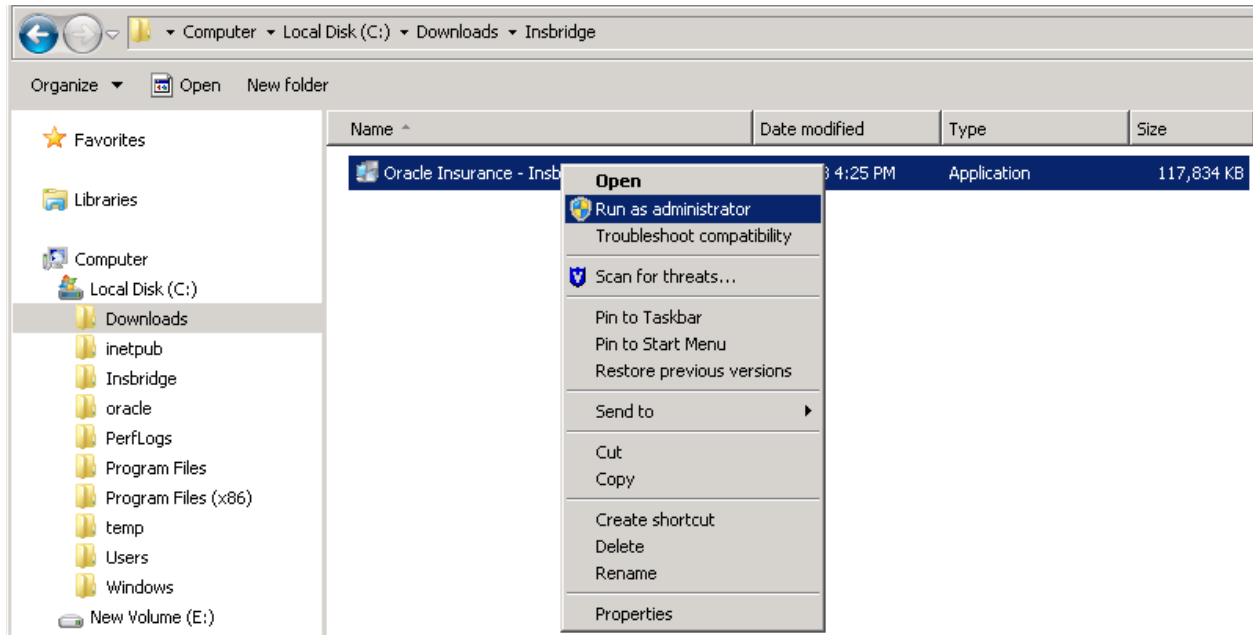


Figure 8 Install as Administrator

NOTE: *Please close all open applications before running the Oracle Insurance - Insbridge Enterprise Rating file.*

2. Open the Oracle Insurance - Insbridge Enterprise Rating file. A Welcome screen is displayed.

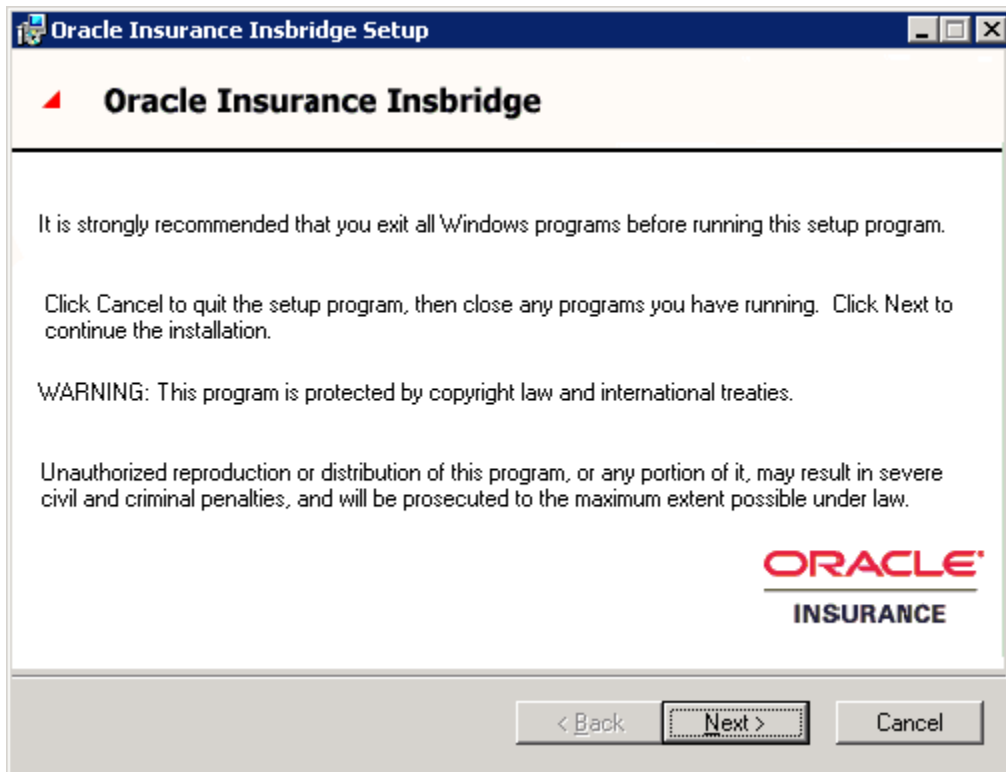


Figure 9 Installing Insbridge

3. Click **Next** to continue.

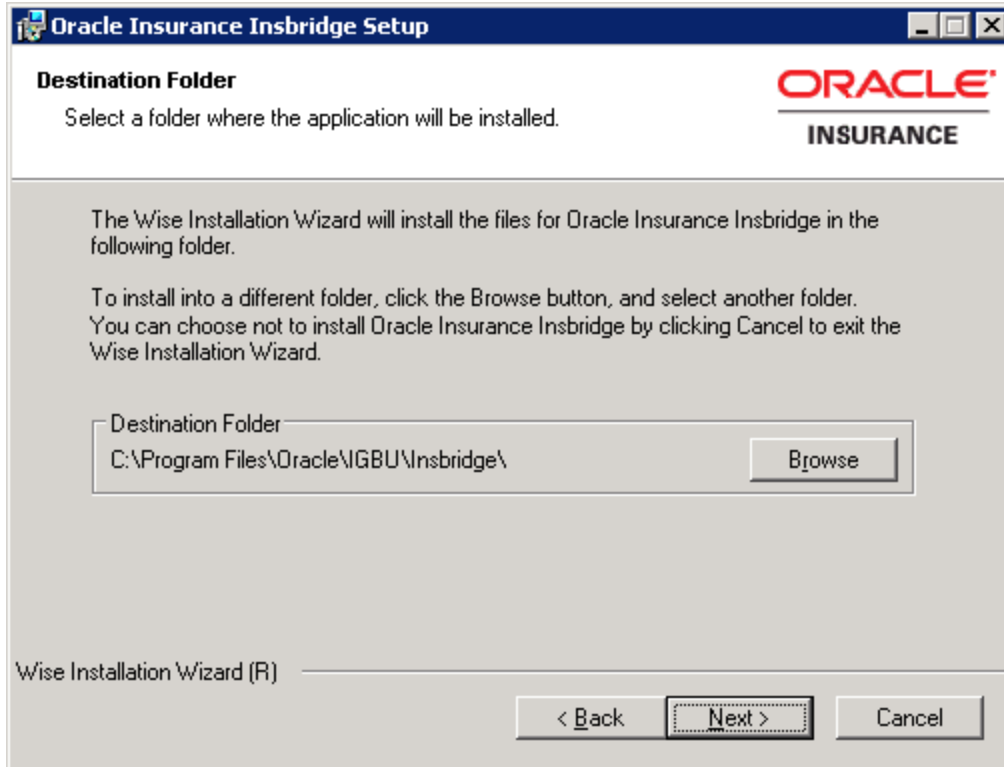


Figure 10 Entering the Destination Folder for Inbridge

4. Choose the location where the Inbridge installation will be installed. A default installation folder is created for all new installs. This will be the location for all future installations for Inbridge applications. Select **Browse** if you want to install in a different location. After selecting a location, click **Next** to continue.

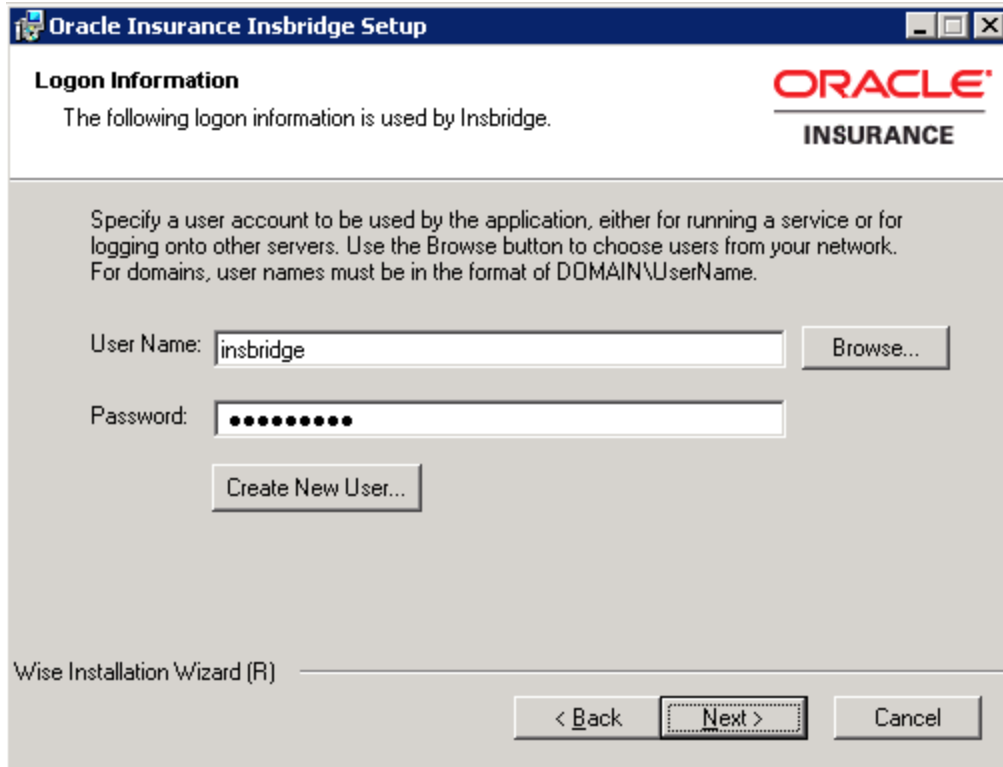


Figure 11 Logon Information

5. Enter the **Inbridge user name and password** for the local user account you set up earlier. The logon information screen is displayed. You must specify a user account to be used by the application. Please use the Inbridge user account that you set up on page **Error! Bookmark not defined..**

NOTE: *You can Create a New user at this point, if needed. Click the Create New User button to be placed on New User screen to setup an Inbridge user.*

6. Click **Next** to continue.

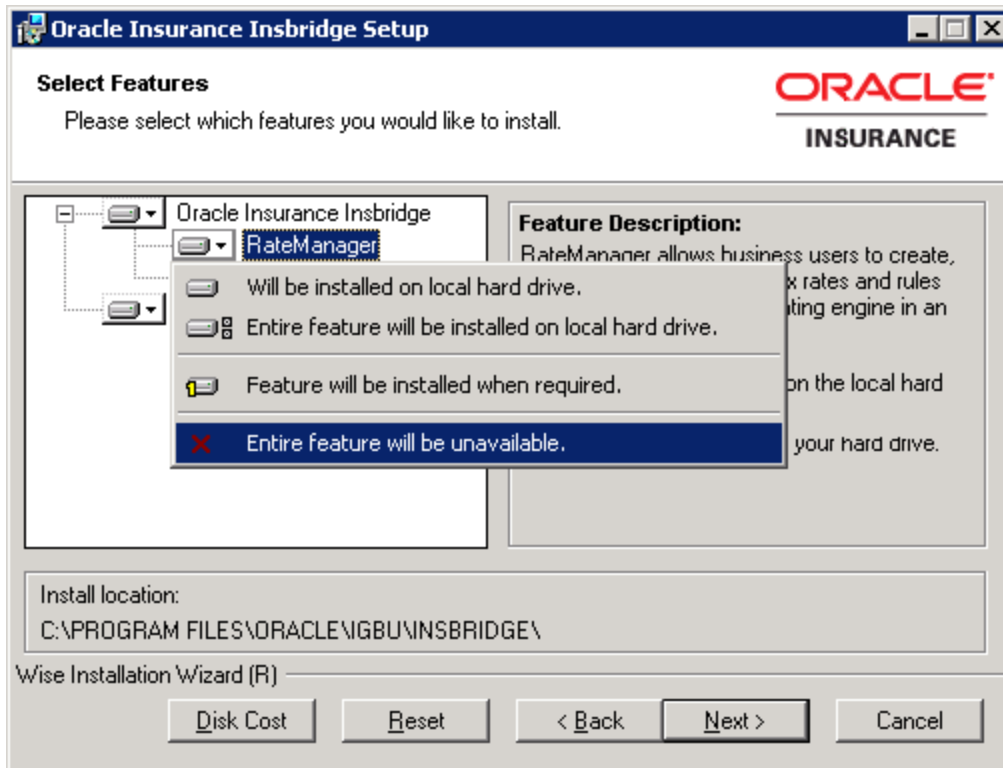


Figure 12 Selecting Features for Installation

7. The next screen lists the applications to be installed. To expand the options and view details, click on the downward arrow. All features are checked for installation. Select RateManager and select the **Entire feature will be unavailable**. Click **Next** to continue.

Options are:

- **Oracle Inbridge Insurance:**
 - The default option is: Entire feature will be installed on local hard drive.
 - You will not be able to opt out of this selection.
- **RateManager:**
 - The default option is: Entire feature will be installed on local hard drive.
 - You will be able to opt out of this option. Select Entire Feature will be unavailable. RateManager will not be installed. **You do not need to install RateManager.**
- **IBFA:**
 - The default option is: Entire feature will be installed on local hard drive.
 - You will not be able to opt out of this selection.
- **Oracle BI Publisher Reports:**
 - The default option is: Entire feature will be installed on local hard drive.
 - You will not be able to opt out of this selection.
 - This option does not install the OBI Publisher. Only the templates required by the Inbridge application will be installed on local hard drive.

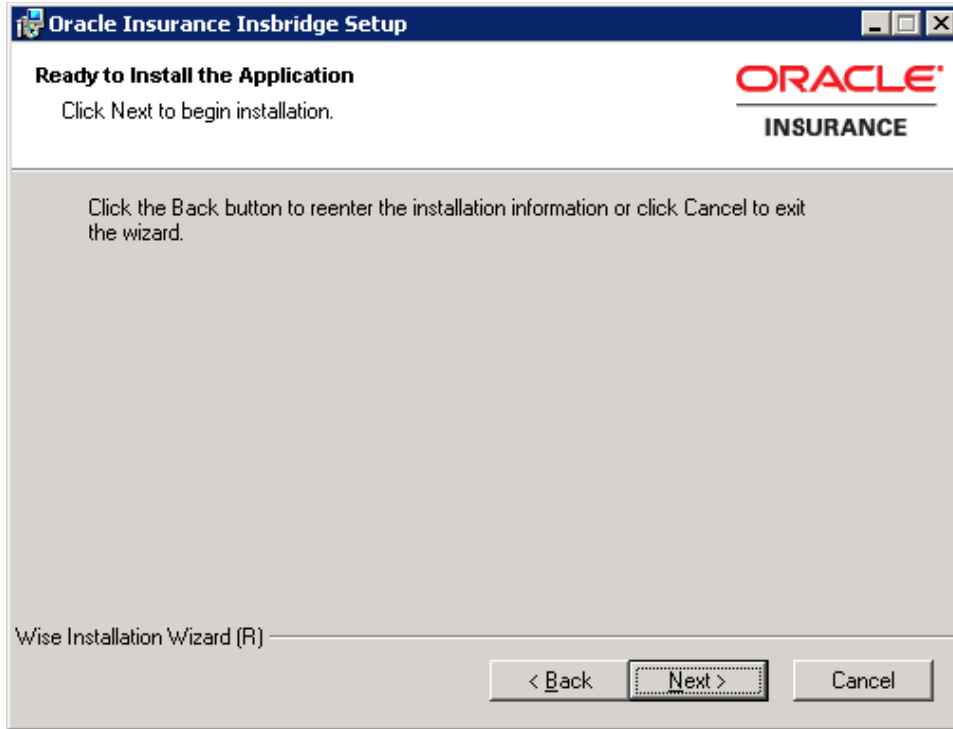


Figure 13 Ready to Install

8. A Ready to Install screen is displayed. If you are ready, click **Next**. Otherwise click Back to check the options you want to install.

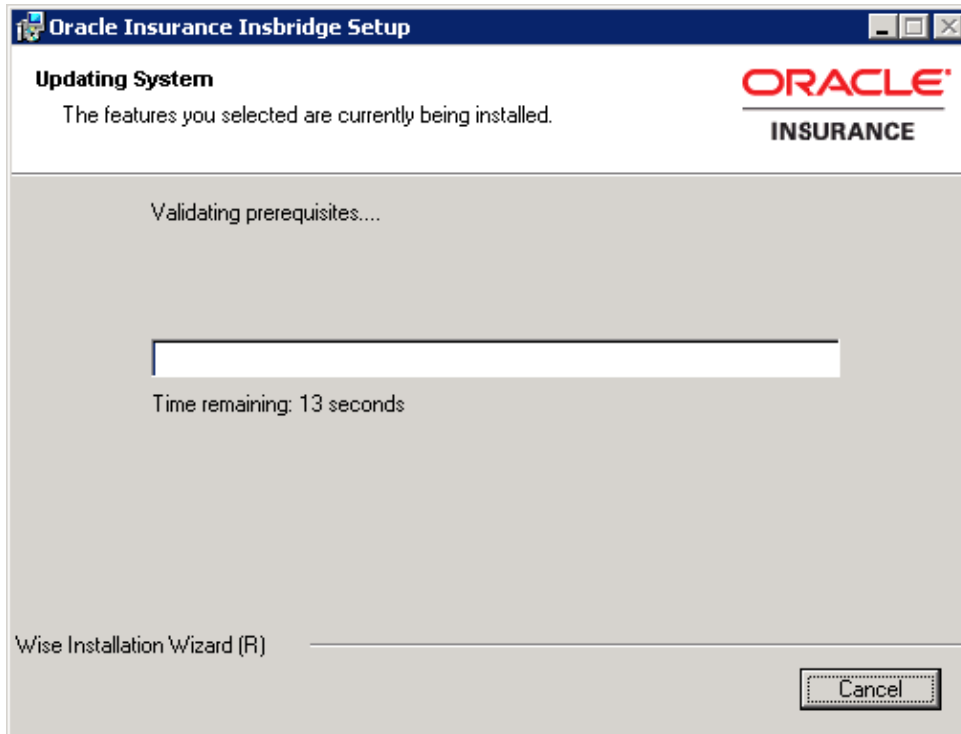


Figure 14 Installation Progress

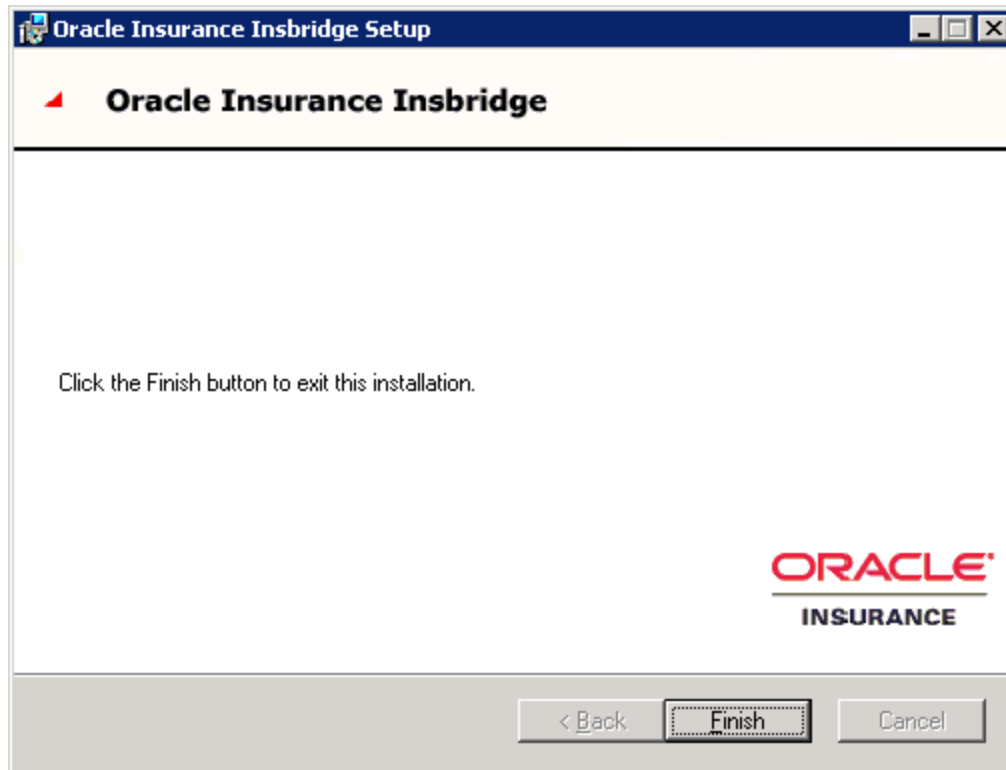


Figure 15 Install ReadMe Screen

9. Click **Finish** to finish the installation. The installation should complete successfully.

STEP 2: CONFIGURING REGISTRY ACCESS

NOTE: *If you use Registry Editor incorrectly, you may cause serious problems to the operating system. These problems may require you to reinstall your operating system. Insbridge cannot guarantee that you can solve problems that result from using Registry Editor incorrectly.*

By default, only administrative and power user accounts have full permissions over this key. The insbridge user must also be given **full control** over the following registry key:

HKEY_LOCAL_MACHINE/SOFTWARE/Insbridge

Assigning Permissions for the Registry Access

1. Selecting Run from the Start Menu.
2. Type **regedt32**. Click **OK**. The Registry Editor will open.

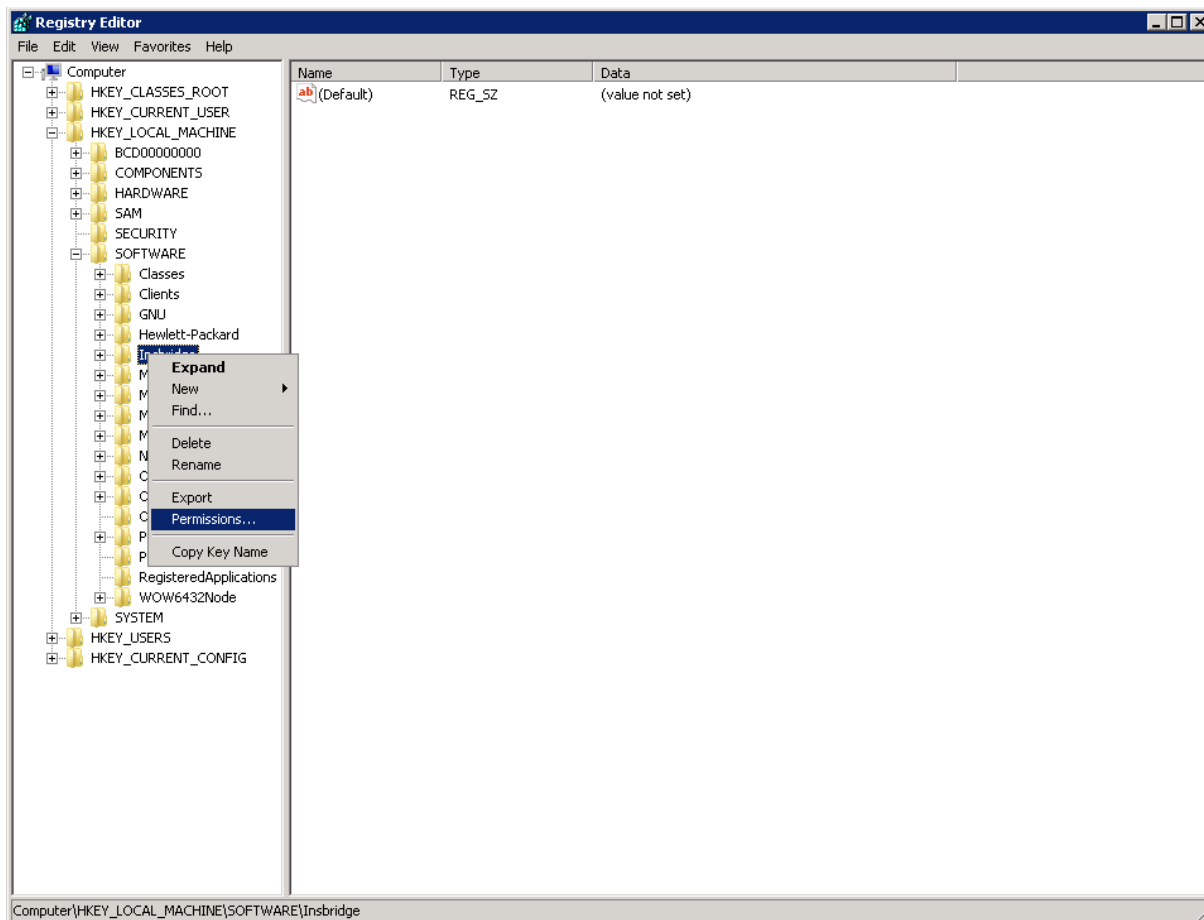


Figure 16 Configure Registry Access Windows Server

3. **Browse** to HKEY_LOCAL_MACHINE. **Select SOFTWARE**→**Insbridge**.

4. Right click and select **Permissions**.
5. Scroll through the users. Select the **Insbridge** user.
6. Verify that the Insbridge user has **Full Control**.
7. If the Insbridge user does have Full Control, cancel out of the registry and continue with the installation.
8. If the Insbridge user does **not** have Full Control, change permissions to allow for Full Control. Save your entry and close out the registry. Continue with the installation.
9. If the Insbridge user is not listed, follow the step to add the Insbridge user.

Adding the Insbridge User:

10. From the Permissions screen, click **Add**.
11. On the Select Users or Groups popup, you can leave the defaults for the **Object Types** and **Locations** or enter the values you require.

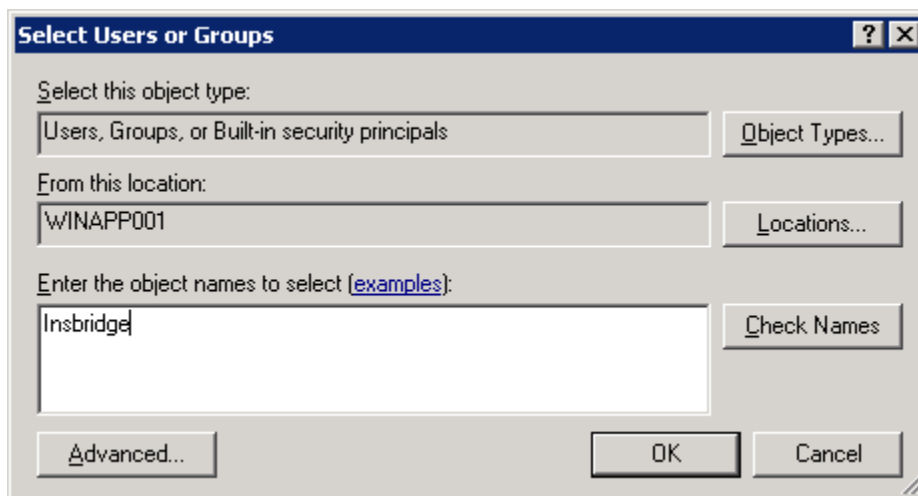


Figure 17 Entering the User

12. Enter in the user name (insbridge) and click **Check Names**. If the user name is found, it will be listed. If the name is not found, an error screen will be displayed. Cancel out and to return to the Select Users or Groups popup. Click **Advanced** to search. To search the directory, click Find Now and scroll through the list until you find the user name you need. If the user name is not listed, return to User Accounts and verify the user name was created.
13. Once the name is listed, click **OK**.

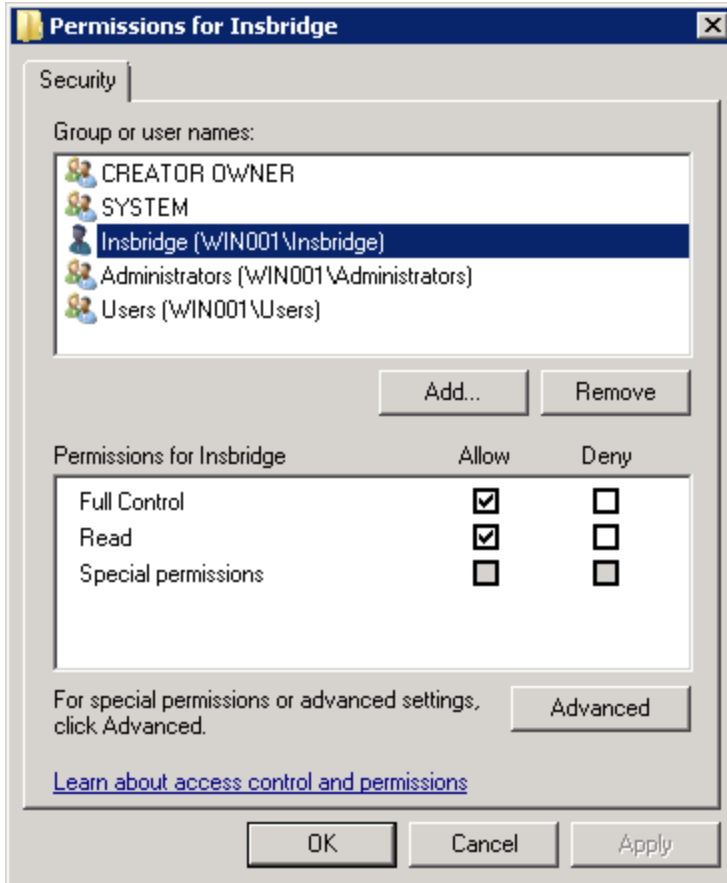


Figure 18 Applying Permissions

14. On the Permissions screen, make sure the insbridge user is highlighted and check to give **Full Control** to the entire Insbridge key.
15. Click **OK**.
16. Close the registry and continue with the install.

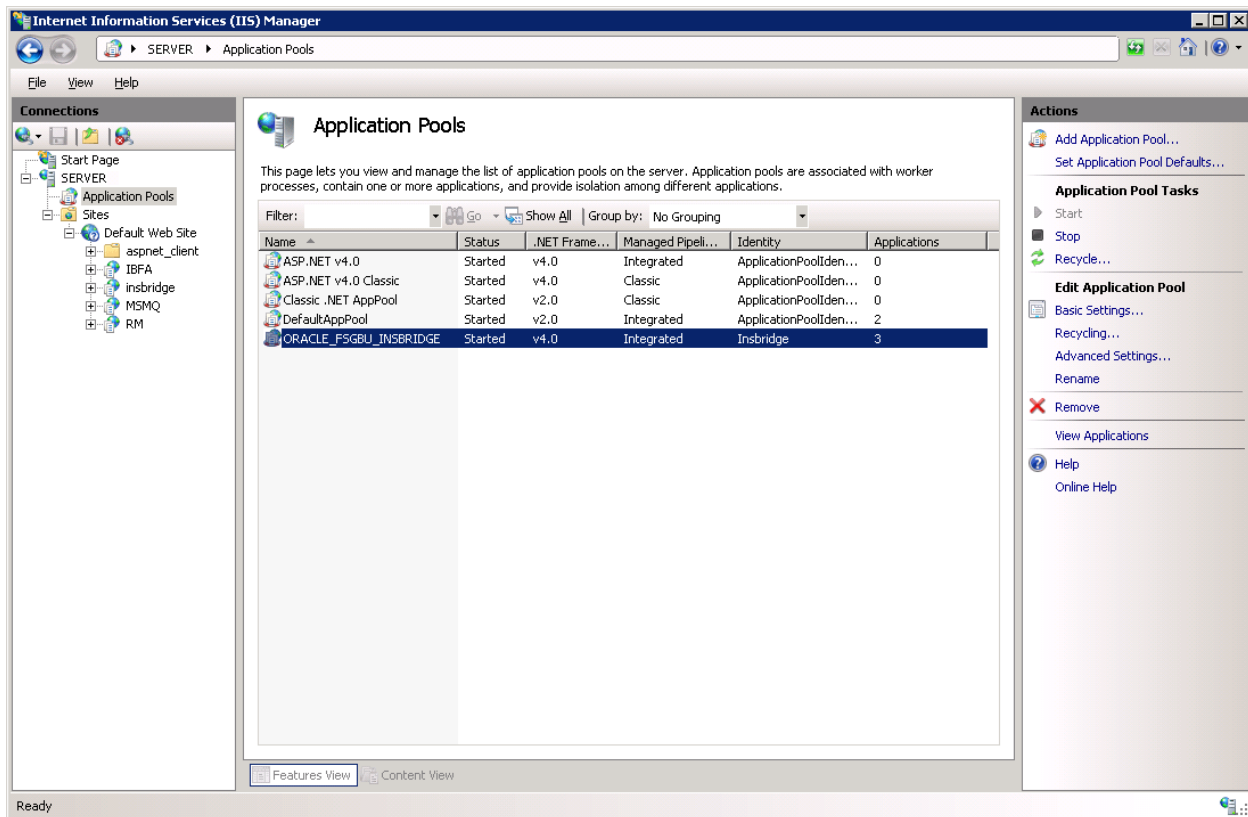
STEP 3: INSBRIDGE APPLICATION POOL

Insbridge requires .NET framework setting of v2.0. This may present conflicts with other applications in the default application pool that require a higher setting. To avoid conflict and improve performance, a separate Insbridge Application Pool must be created.

Verify the Insbridge Application Pool

A default Insbridge Application Pool is created at installation. This pool ORACLE_FSGBU_INSBRIDGE should be used for the Oracle applications. Please verify that the Insbridge web applications are associated with the new Insbridge application pool.

1. Click **Start** → Administrative Tools → select **IIS Manager**.
2. Expand the **Local Computer** and select **Application Pools**. Verify the ORACLE_FSGBU_INSBRIDGE application pool, the Identity is Insbridge and that there are 3 applications associated. If all pool is correct, proceed to the next step.



If the ORACLE_FSGBU_INSBRIDGE has not been created, you will have to create one. Please see Appendix A, Creating an Application Pool.

STEP 4: ASSIGNING PERMISSIONS – WINDOWS TEMP FOLDER

Permissions must be assigned for the Windows Temp Folder for MSMQ and for the application pool default identity. Prior to assigning permissions, please verify the Inbridge application pool identity.

Assigning Permissions in the Windows Temp Directory:

1. Find the WINDOWS folder, most likely on your C drive.
2. Right click the Windows→Temp folder.

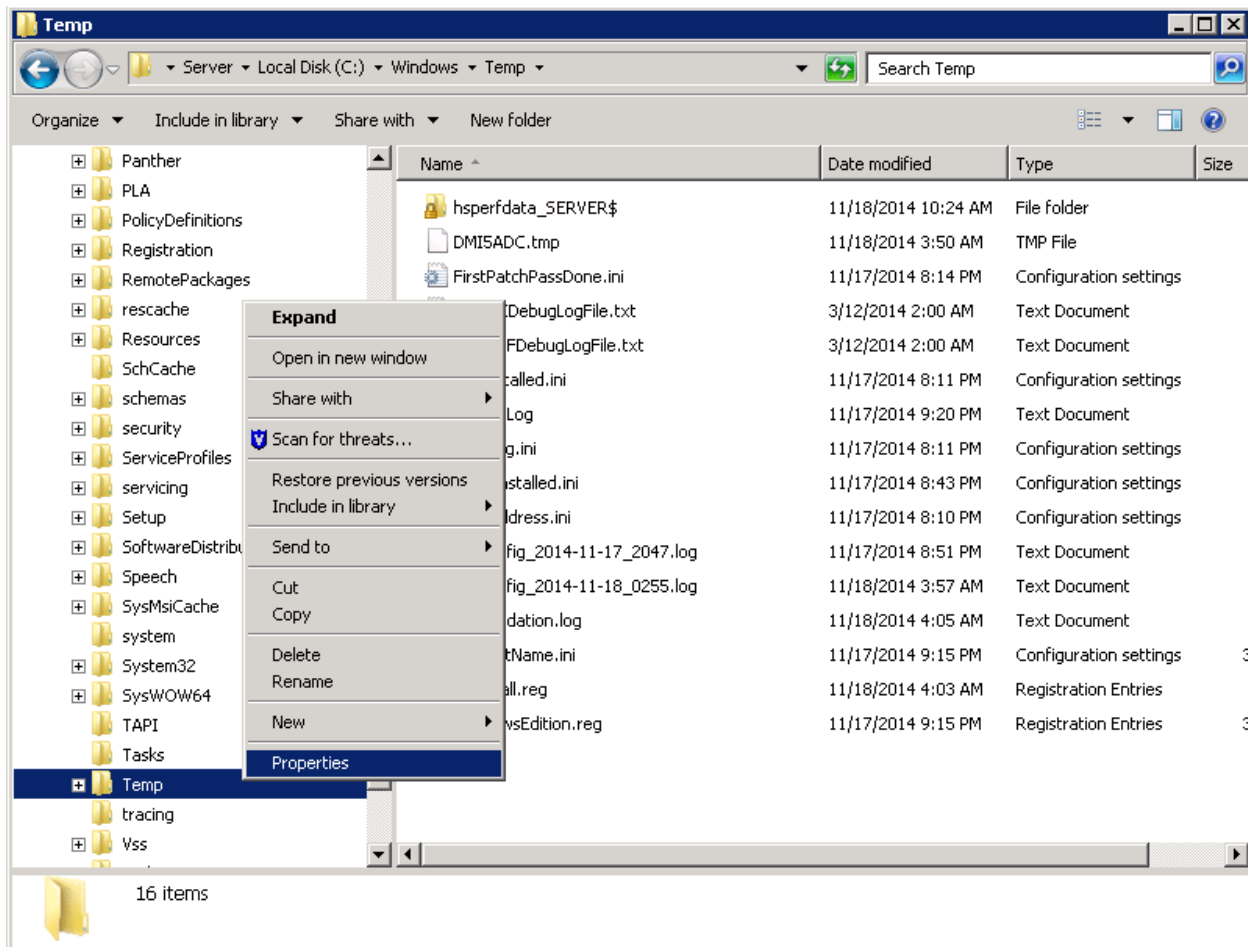


Figure 19 Assigning Permissions for the Inbridge User on Windows Temp

3. Select **Properties**. The Temp Properties screen opens.
4. Select the **Security** tab.
5. Click **Edit**.

6. On the Permissions for Temp screen, select the Insbridge user and click Add. If the Insbridge user is not found, cancel out and return to the Local Users and Groups area in Server Manager and verify the Insbridge user was created.
7. Update the permissions. The Insbridge user requires **Full Control**.

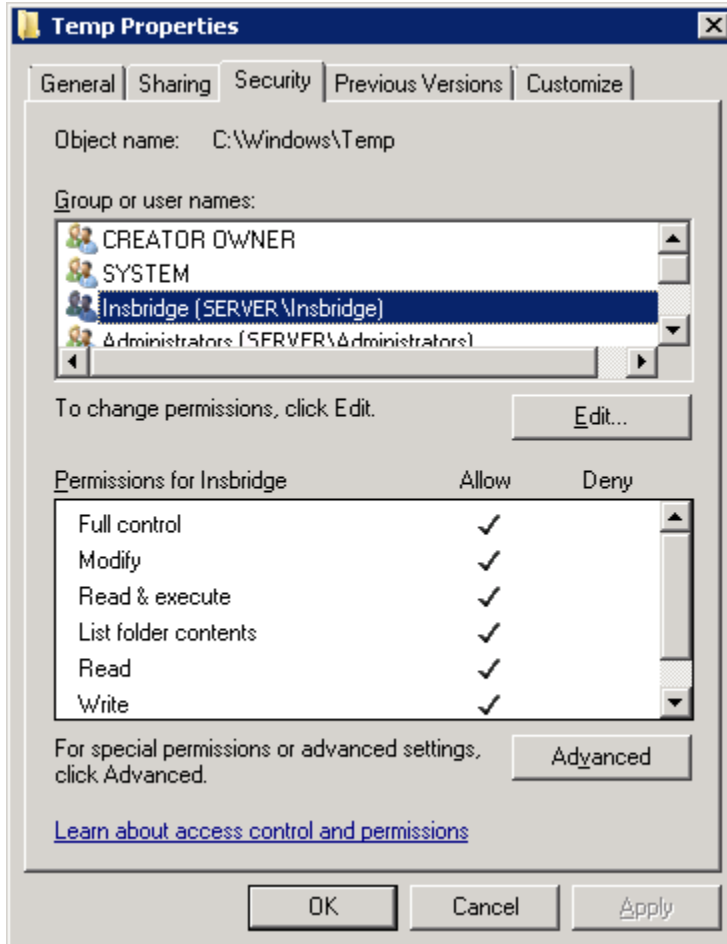


Figure 20 Temp File Properties

8. Click **OK** to close the Permissions for Temp screen.
9. Click **OK** to close the Temp Properties screen.

STEP 5: ASSIGNING PERMISSIONS – INSBRIDGE FOLDER

Assigning Permissions for an Insbridge Folder Location

1. Locate the Insbridge installation directory. If you selected another directory when installing the Insbridge application, go to that directory. The default installation directory is located at: C:\Program Files\Oracle\Insbridge.
2. Right click the **Insbridge** folder.

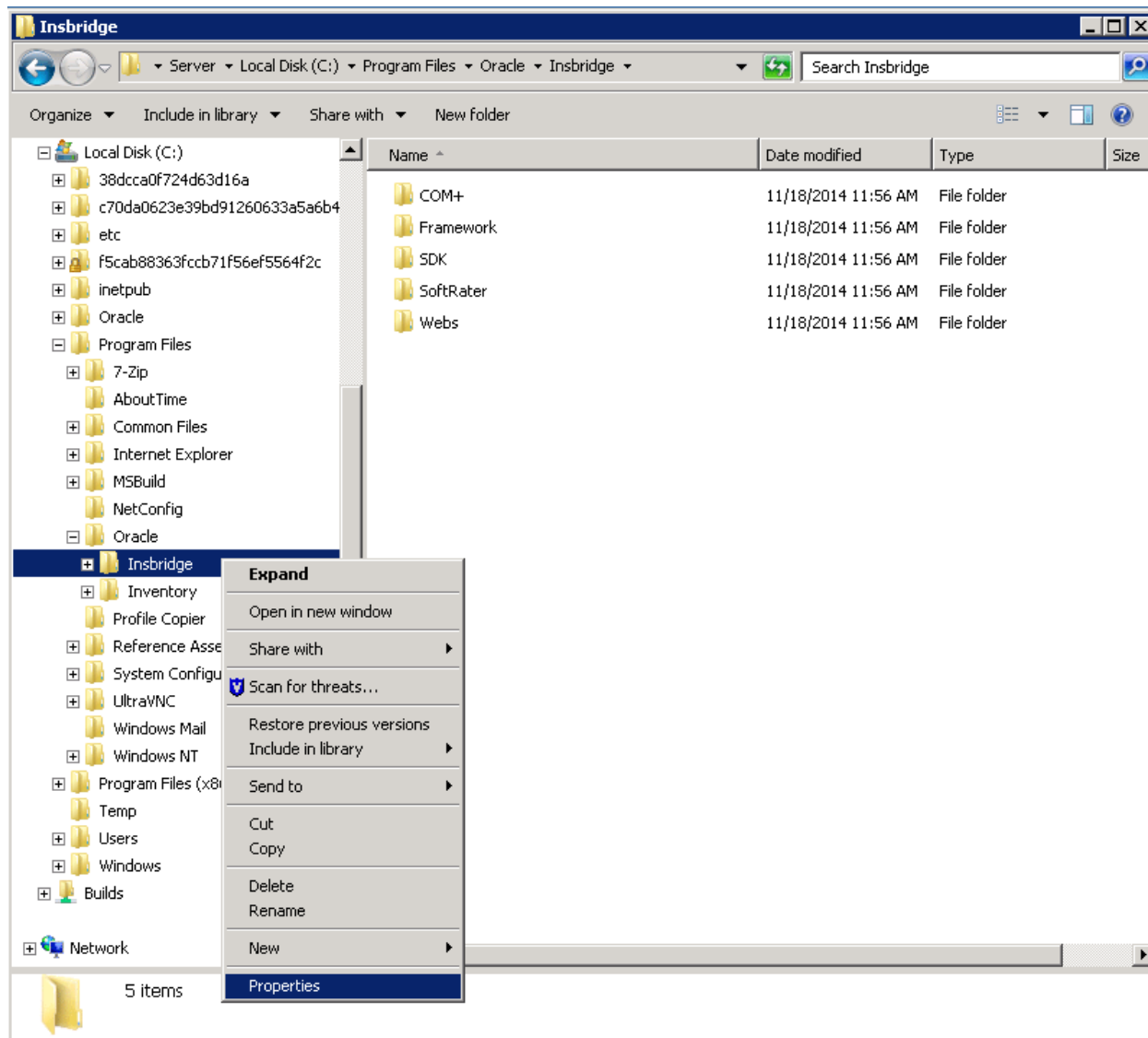


Figure 21 Assigning Permissions for the Insbridge User on Insbridge

3. Select **Properties**. The Insbridge Properties screen is displayed.

4. Select the **Security** tab.
5. Verify that the Insbridge user created earlier is assigned to the directory and has Full Control. If the Insbridge user is listed and has Full Control, proceed to the next step.

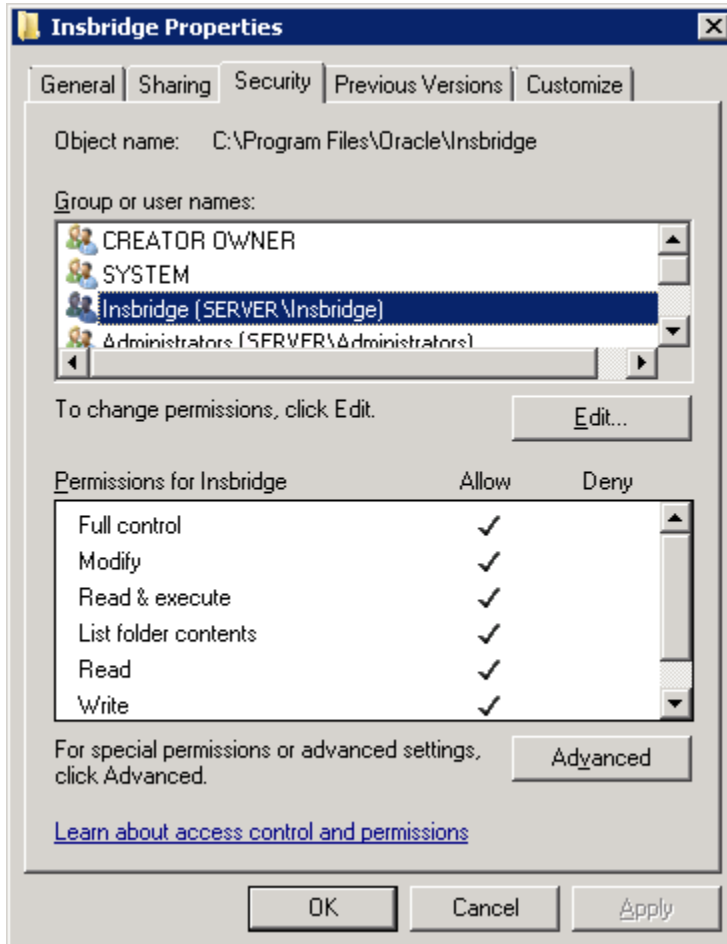


Figure 22 Insbridge Folder Properties

6. If the Insbridge user is not listed, click Edit. On the Permissions for Insbridge screen, select the Insbridge user and click Add. If the Insbridge user is not found, cancel out and return to the Local Users and Groups area in Server Manager and verify the Insbridge user was created.
7. Update the permissions. The Insbridge user requires **Full Control**.
8. Click **OK** to close the Permissions for Insbridge screen.
9. Click **OK** to close the Temp Properties screen.

STEP 6: RESTORING A SOFTRATER DATABASE

Because many corporate environments have a separation between the system administrator and the database administrator, the following process may require both administrators' access and permissions. Make sure you have a SQL Server account called **ibru**.

NOTE: *If you do not have database permissions, you will not be able to perform the following database procedures.*

NOTE: *If you are unsure how to perform a database restore, please consult with your database administrator.*

Currently supported is the default SQL Server collation using SQL_Latin1_General_CP1_CI_AS and sort order plus case sensitivity using Latin1_General_BIN as the server collation. The security database (IB_CLIENT) supports the default SQL Server collation using SQL_Latin1_General_CP1_CI_AS. The RateManager and SoftRater databases can use either case sensitive or non-case sensitive. Please check with Oracle Insurance for any questions regarding database server sort orders or collations.

1. Located in the Insbridge Installation Directory:
 - SoftRater: IBSR
 - o Latin1_General_BIN
 - DATABASE_BACKUP_IBSR_TEMPLATE_CASE_SENSITIVE.bak
 - o SQL_Latin1_General_CP1_CI_AS
 - DATABASE_BACKUP_IBSR_TEMPLATE.bak
 - o Update: usp_IBSR_v04.05.01.sql
 - o Update: usp_IBSR_v04.06.00.01.sql
 - o Update: usp_IBSR_v04.06.00.00.sql
2. Select the SoftRater backup file you want to use, case sensitive or non-case sensitive.
3. **Copy the file** to an appropriate database folder on the machine where SQL Server is installed. For example, [Drive]:\Program Files\Insbridge\Databases. If you are unsure of a location, please consult with your database administrator.
4. **Rename the file.** It is not required but it is strongly suggested that the database file name be changed from TEMPLATE to something that defines the database more accurately. At a minimum, it is recommended that you remove “_TEMPLATE” from the name. You can change the names after they have been restored also.
5. **Open the SQL Server Management Studio** either on the server or remotely using either an administrative account with sa privileges or as the sa account.

NOTE: *If you do not have SQL Server Management Studio, check to see that the SQL Server Client has been installed. For a SQL Server install, you must have the SQL Server Client installed.*

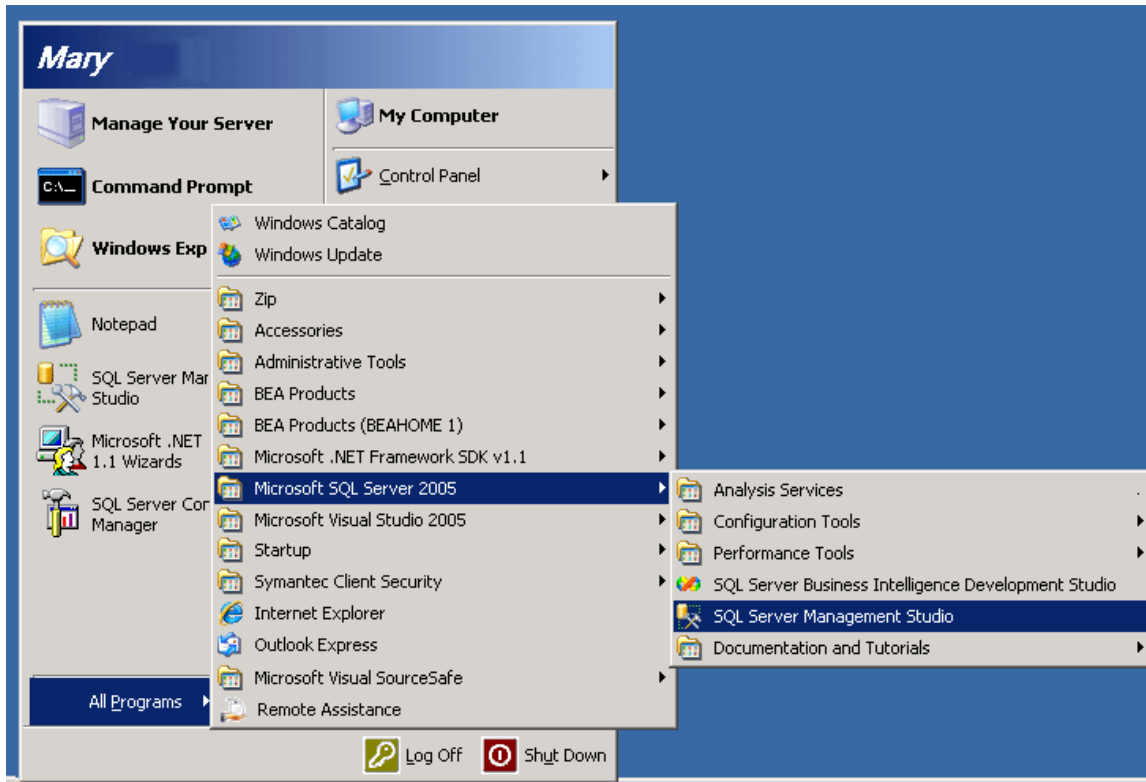


Figure 23 Restoring a Database to SQL Server

6. Go to **Databases**.

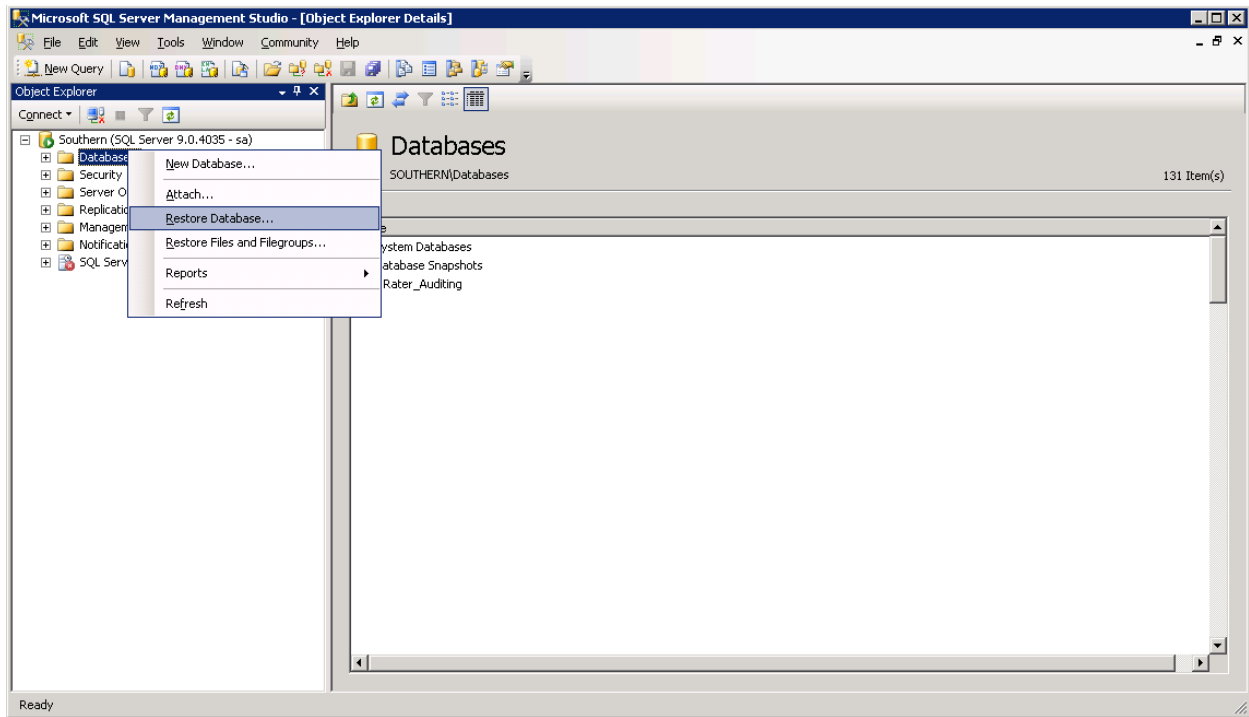


Figure 24 Right Click to Restore Database

7. Right click on **Databases**.
8. Select **Restore Database...** A separate screen will be displayed.

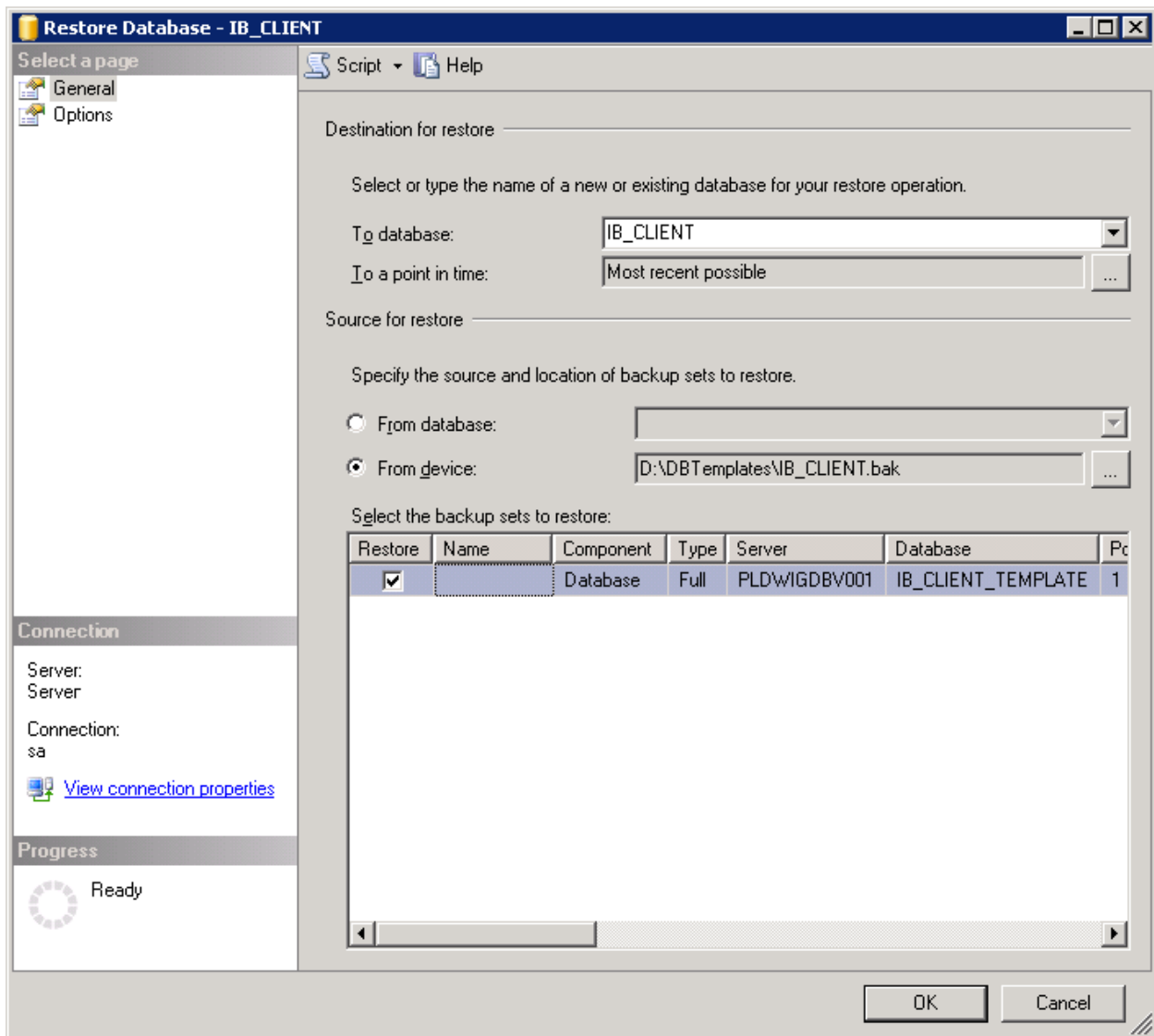


Figure 25 Restoring a Database

9. Enter your IBSR database name in **To Database:**.
10. Select **From Device**. Click ... to browse to the location where the database files were placed in step 2.
11. Select your database **IBSR_ xxxx.BAK**, where **xxxx** equals the renamed file from step 3.
12. Click **OK**. Your database will be populated.
13. Verify your information. Check the **Restore** box.

14. Click **OK**.
15. If the database was restored successfully, it will be displayed in the database folder. If not, please correct any errors and try again.
16. Once the database is restored to SQL Server, you will need to create or assign a SQL Server user account for the application. This user will be used for the connection to the databases when setting up the connections from the Insbridge Framework Administrator. Make note of the account you want to use. This information will be entered into the Insbridge Framework Administrator.

For ease of administration, the database user should have **db_owner** permissions on the IBSR_XXXX database.

STEP 7: CONFIGURING INSBRIDGE FRAMEWORK ADMINISTRATOR

Open an Internet Explorer web browser and browse to the following location, replacing SERVERNAME with the actual server name:

http://SERVERNAME/IBFA

Logging in to IBFA

The default security setting for a new installation is Custom and requires a login to access.

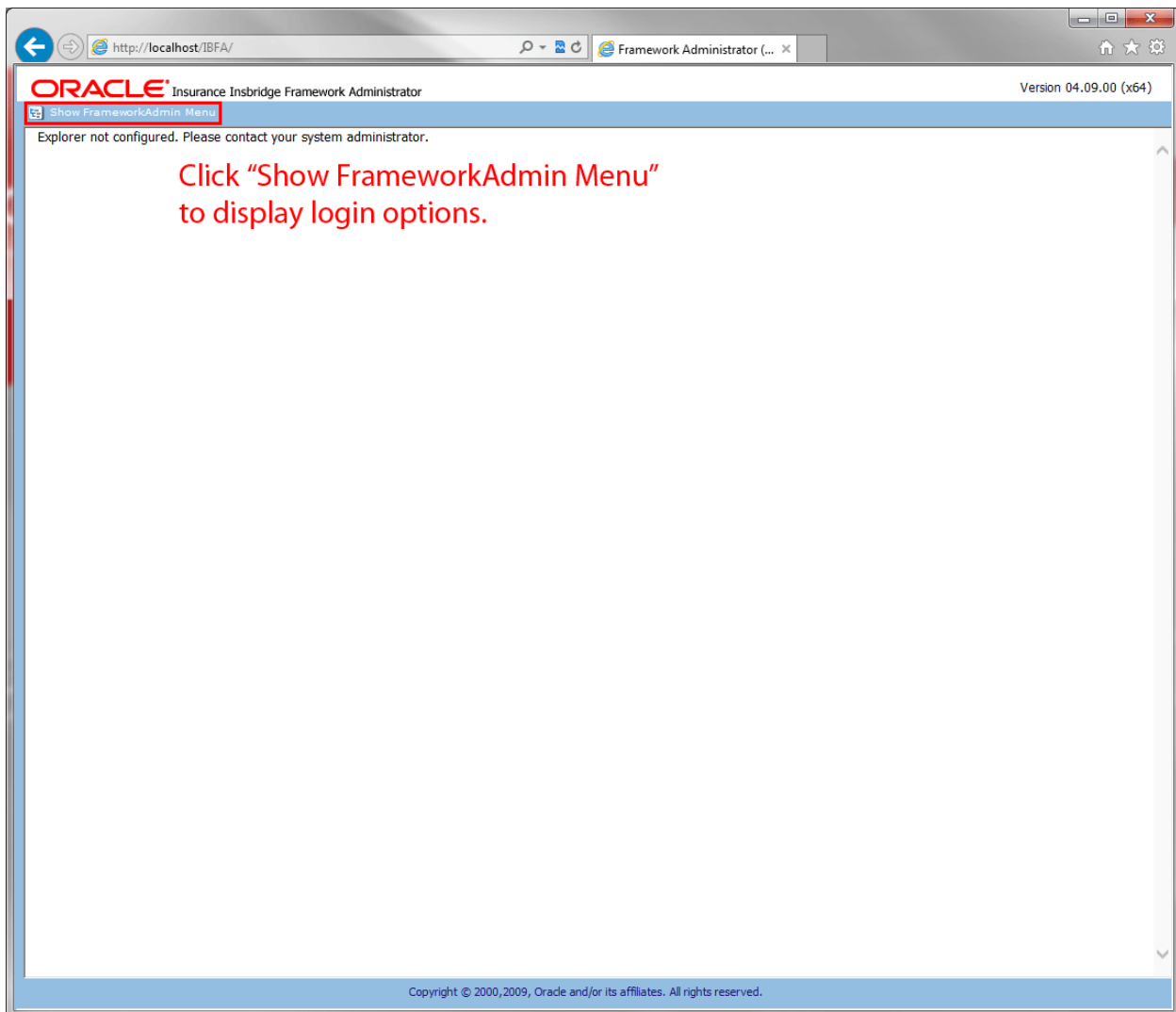


Figure 26 IBFA Landing Page

1. IBFA requires a login to access. Click the Show FrameworkAdmin Menu link to display the login.

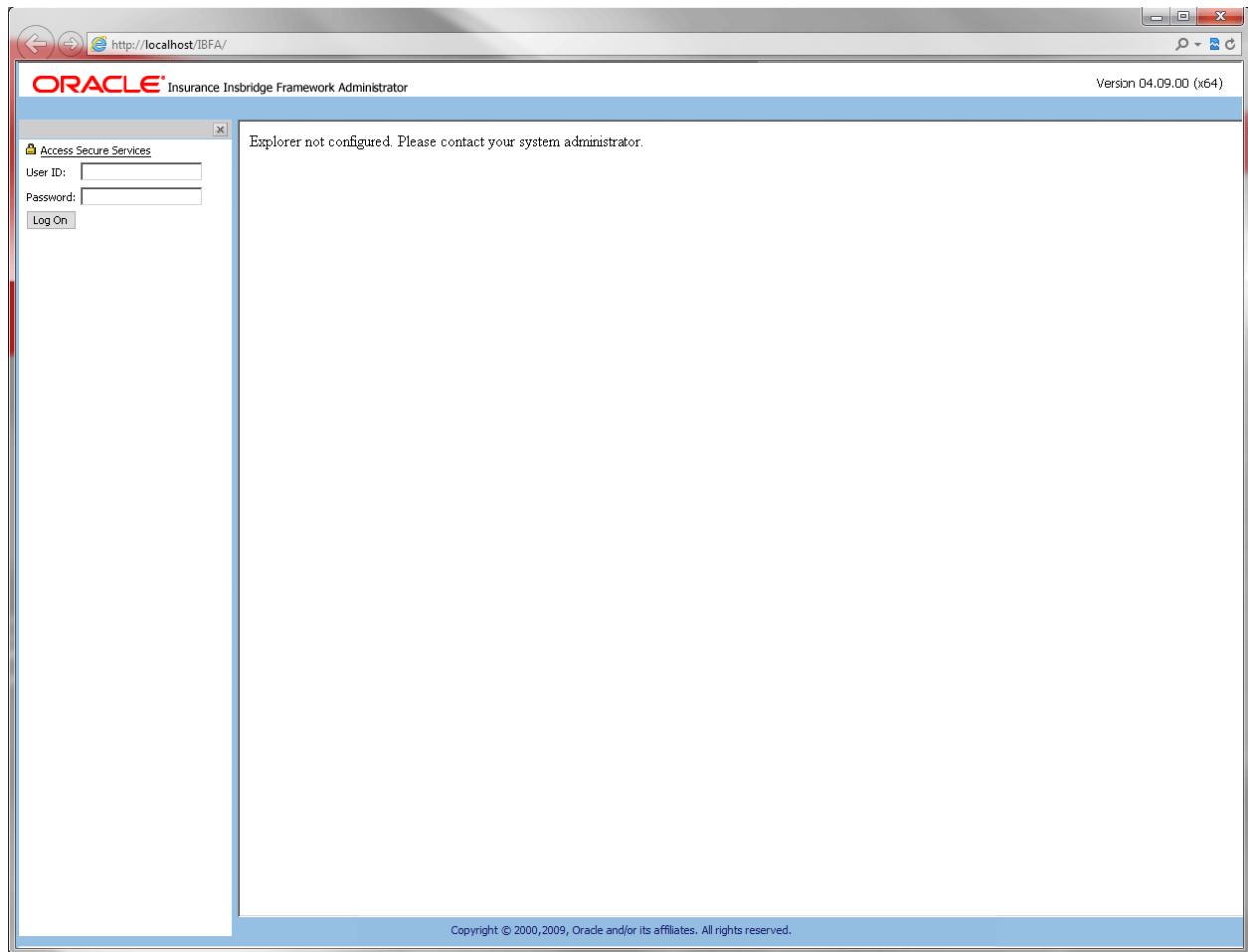


Figure 27 IBFA Login Screen

2. Enter the default User ID and password:

User ID: admin
Password: insbridge

3. The IBFA home page is displayed.

Updating IBFA Security

4. If you want to keep the custom security setting, it is recommended that you change the password immediately.
5. On the left side menu, select Security-> Change Password.

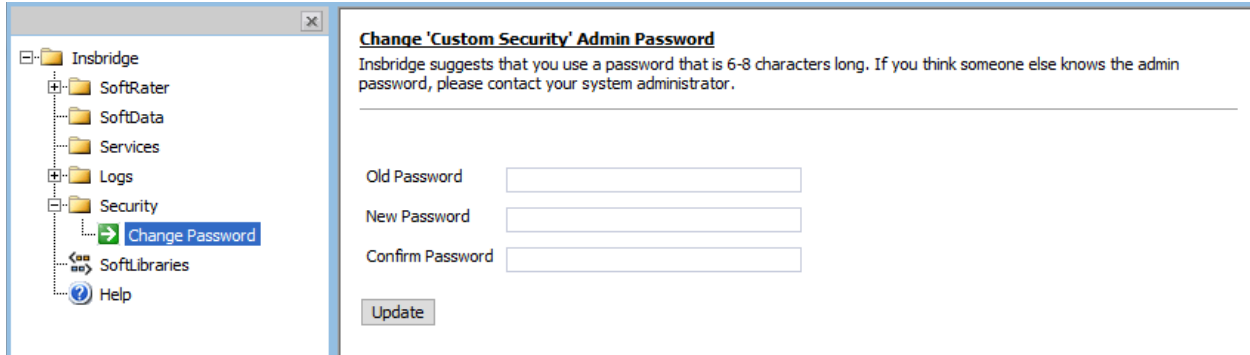


Figure 28 Updating the Default Password

6. Enter in the default password for the old password and enter in the new password of your choice. Confirm the new password and click Update. A success message is displayed when the admin password is updated. If an error message is displayed, make corrections and try again.
7. If you do not want to require a login, you can change the security to None. This changes the default landing page to the IBFA home page and removes any login requirements.
8. On the left side menu, select Security.
9. Select None for Framework Administration Web Security for no security. The landing page will be updated the IBFA home page and no login will be required.

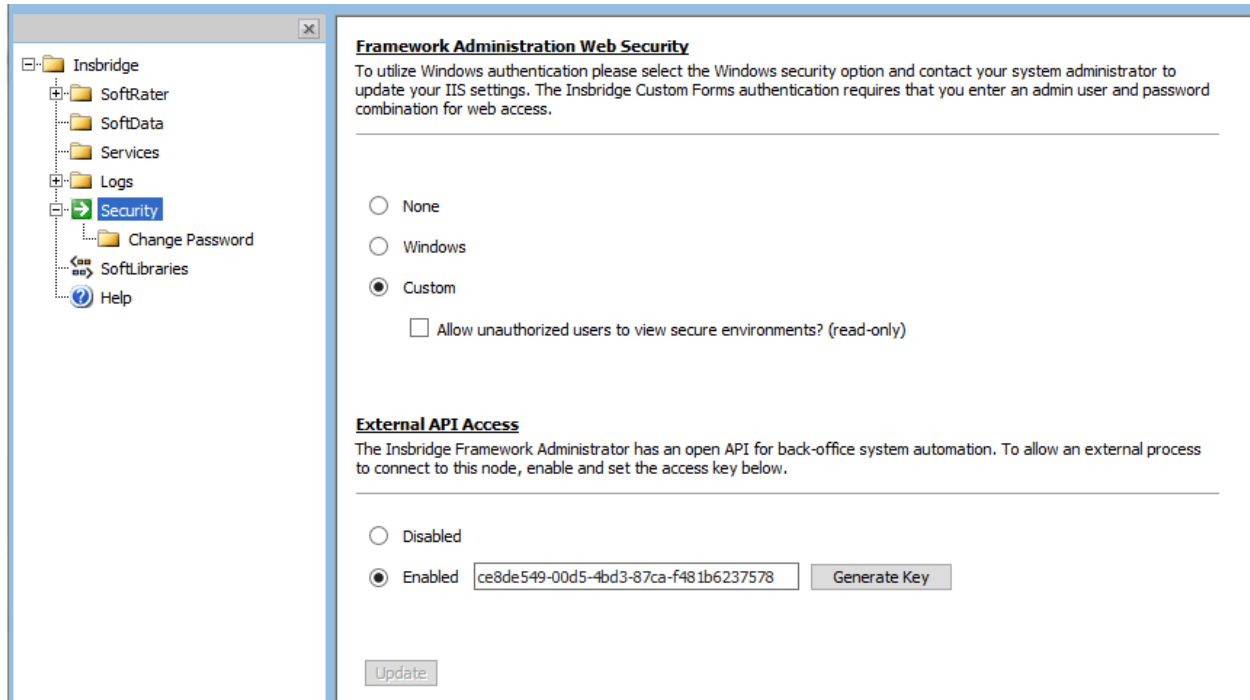


Figure 29 Selecting Security for IBFA

NOTE: You also can select to use Windows security. Please see the IBFA user guide for more information on setting up Windows security.

Entering Company Information

Prior to users entering RateManager, the Insbridge Framework Administrator must be configured for your company.

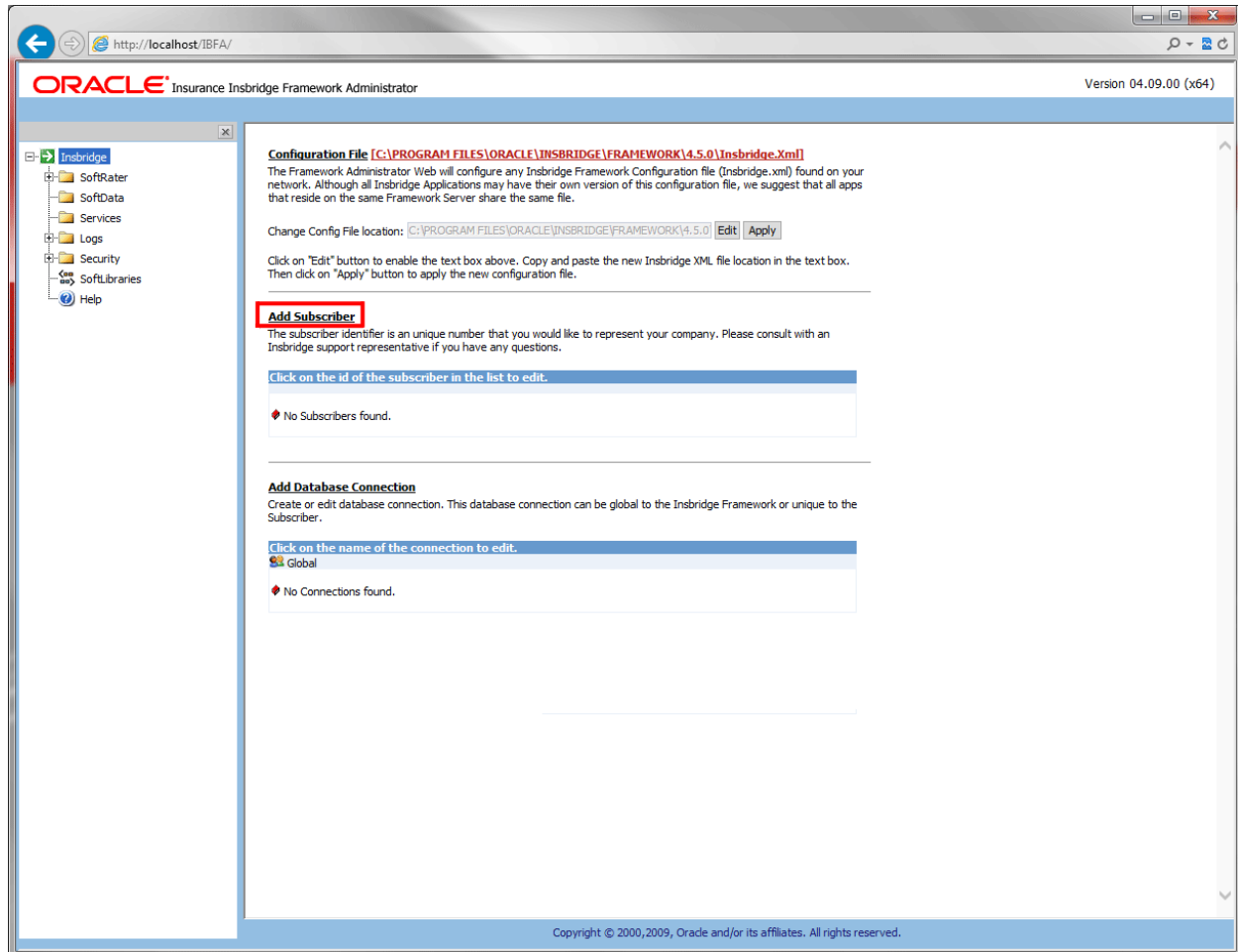


Figure 30 IBFA Home

NOTE: If you receive an access denied error message, please verify that you have given the Insbridge user full control of the Insbridge folder.

NOTE: If you receive an IDNX denied error message, please verify that the Insbridge user has full control over the Insbridge directory. Regedt->Insbridge Directory-> Security.

NOTE: If you receive an error regarding MCSiMenuCtl, please verify that you are using Internet 8.0 or 9.0 (32-bit). Release 04.09.xx does not support Internet Explorer 8.0 or 9.0 (64-bit).

To continue, you will need to exact names of the databases you restored in Step 6, IBSR database.

There are three steps that will need to be done in IBFA:

- **Step 1 – Creating a Subscriber**
- **Step 2 – Creating a SoftRater Environment**
- **Step 3 – Creating a Virtual File Server**

Step 1 – Creating a Subscriber:

For this step you will need the subscriber information from the RateManager IBFA instance that you created previously. The subscriber created here must match that subscriber.

The ID and Name are fixed after the first time you save. These entries cannot be edited. Only the description can be edited. If you have made a mistake, you will have to create another subscriber and delete the incorrect entry.

1. Click on **Add Subscriber** on the Main IBFA screen. A separate screen will be displayed.
2. Enter the **ID**, **Name** and **Description** for your subscriber.
3. When you finish entering the information, click **Save**. The new subscriber will now be displayed in the list of subscribers.

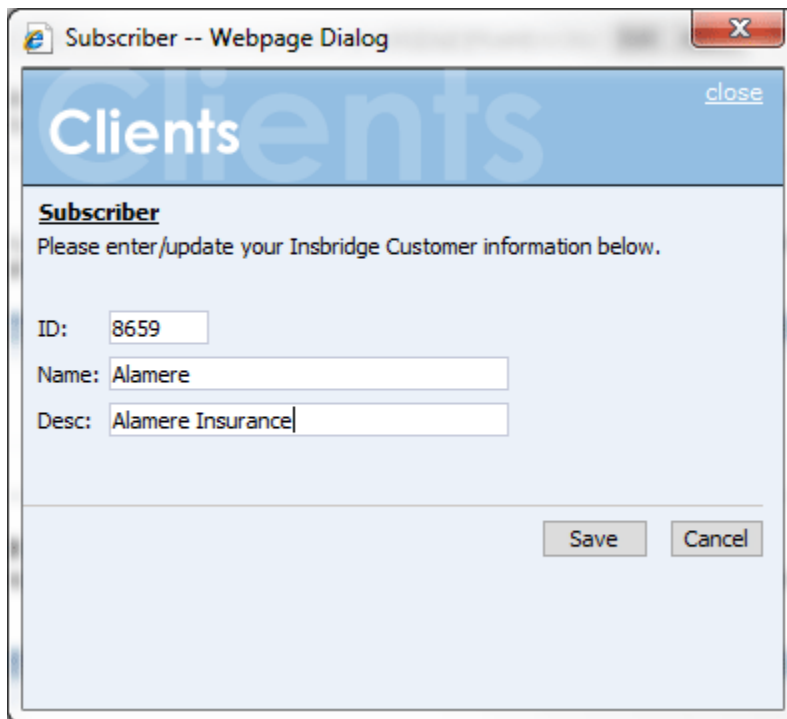


Figure 31 Enter ID

If you require assistance or are unsure of what action to take, please log a Service Request using My Oracle Support at <https://support.oracle.com/>.

Troubleshooting Subscriber Entries:

If you receive an error message or have difficulty creating a subscriber, you may need to add the Insbridge user to the Windows Machine Keys.

1. Go to C:\Documents and Settings\All Users\Application Data\Microsoft\Crypto\RSA\MachineKeys.
2. Right click and select Sharing and Security. Select the Security tab.
3. Add the Insbridge user.

Step 2 – Creating a SoftRater Environment:

Next, create the default rating environment for the SoftRater node.

It is recommended that you create one logical environment:

- SR – to identify the location of the local SRPs and the IBSR DB.

1. Browse to **SoftRater→Explorer→Subscriber name**.

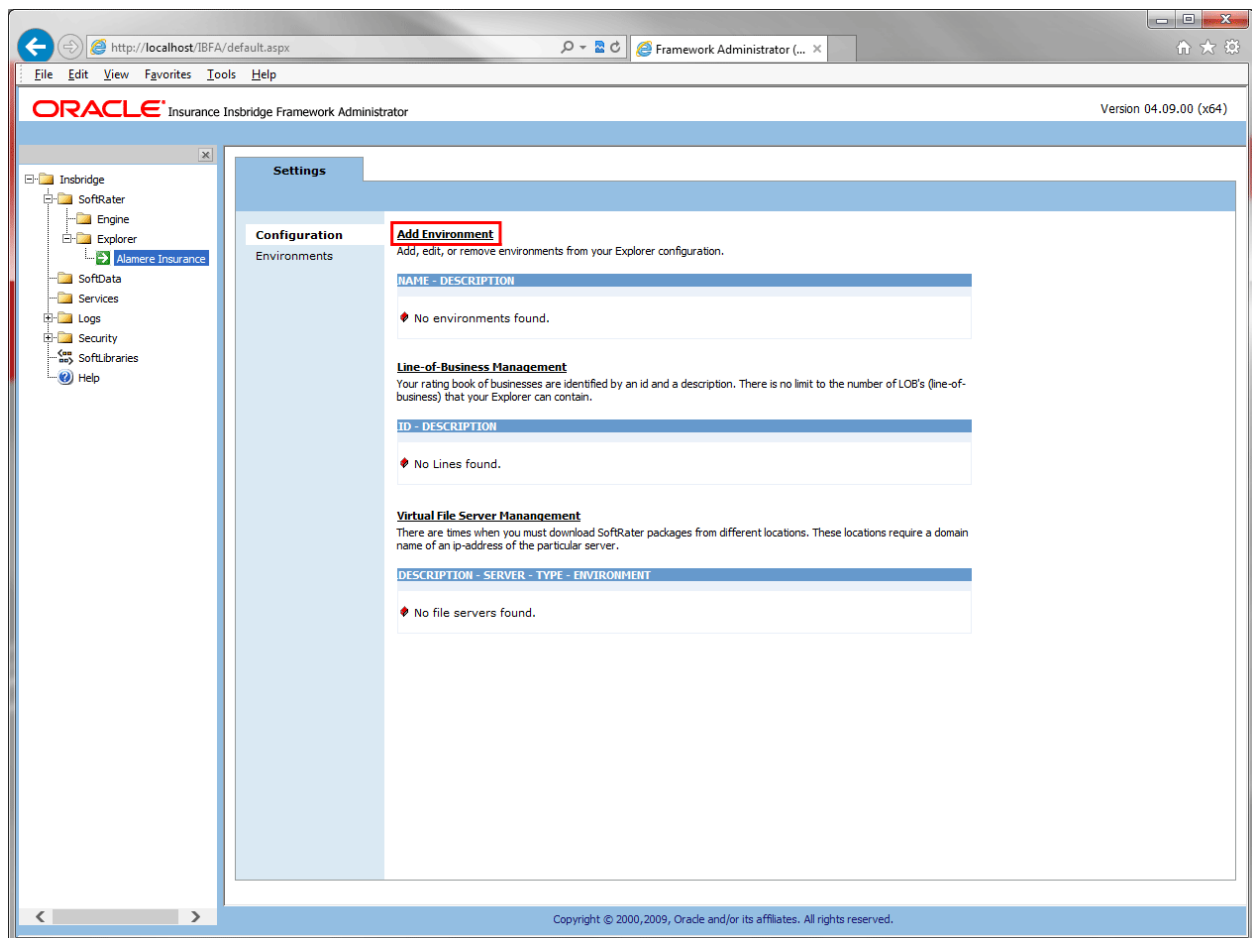


Figure 32 Create a Rating Environment

2. Click on **Add Environment**.

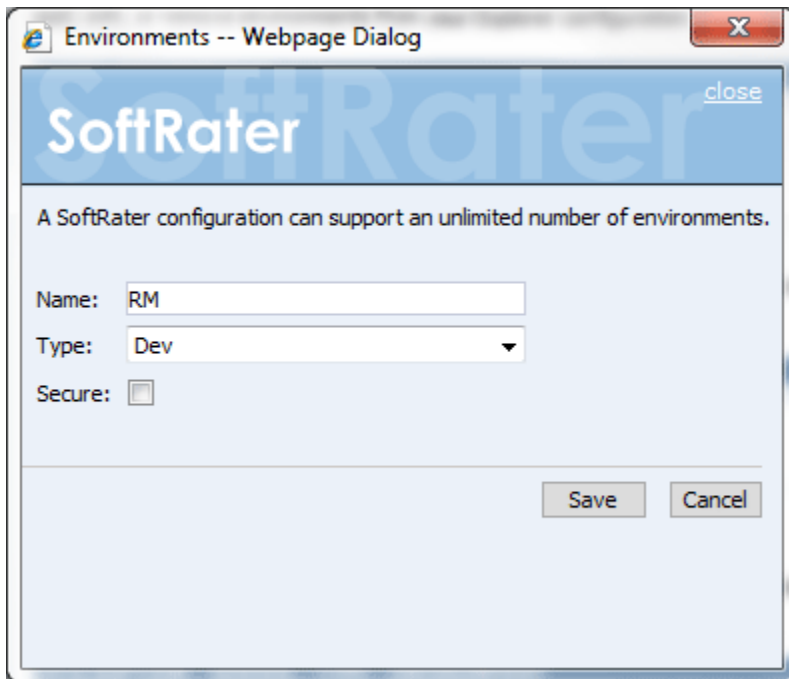


Figure 33 Entering Name and Environment

3. Enter a Name and select a Type. The name and type are totally dependent on how your Inbridge system is designed.

There are three types of Logical Environments:

- **Development**
- **Quality Assurance**
- **Production**

After you have entered your logical environment, you must define it.

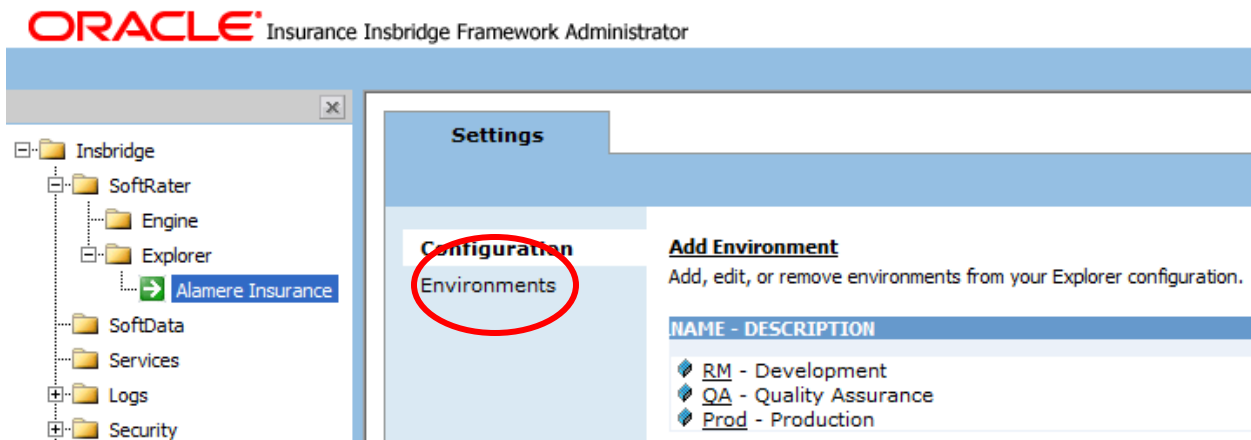


Figure 34 Obtaining Environment Information

4. Select the **Environments** link under the Configuration header on the left hand side to enter the configuration information for the newly created logical environment. You will be placed on the Environments screen. The environments you previously setup will be listed. If an environment is missing, you must return to the Configuration subtab and add it.

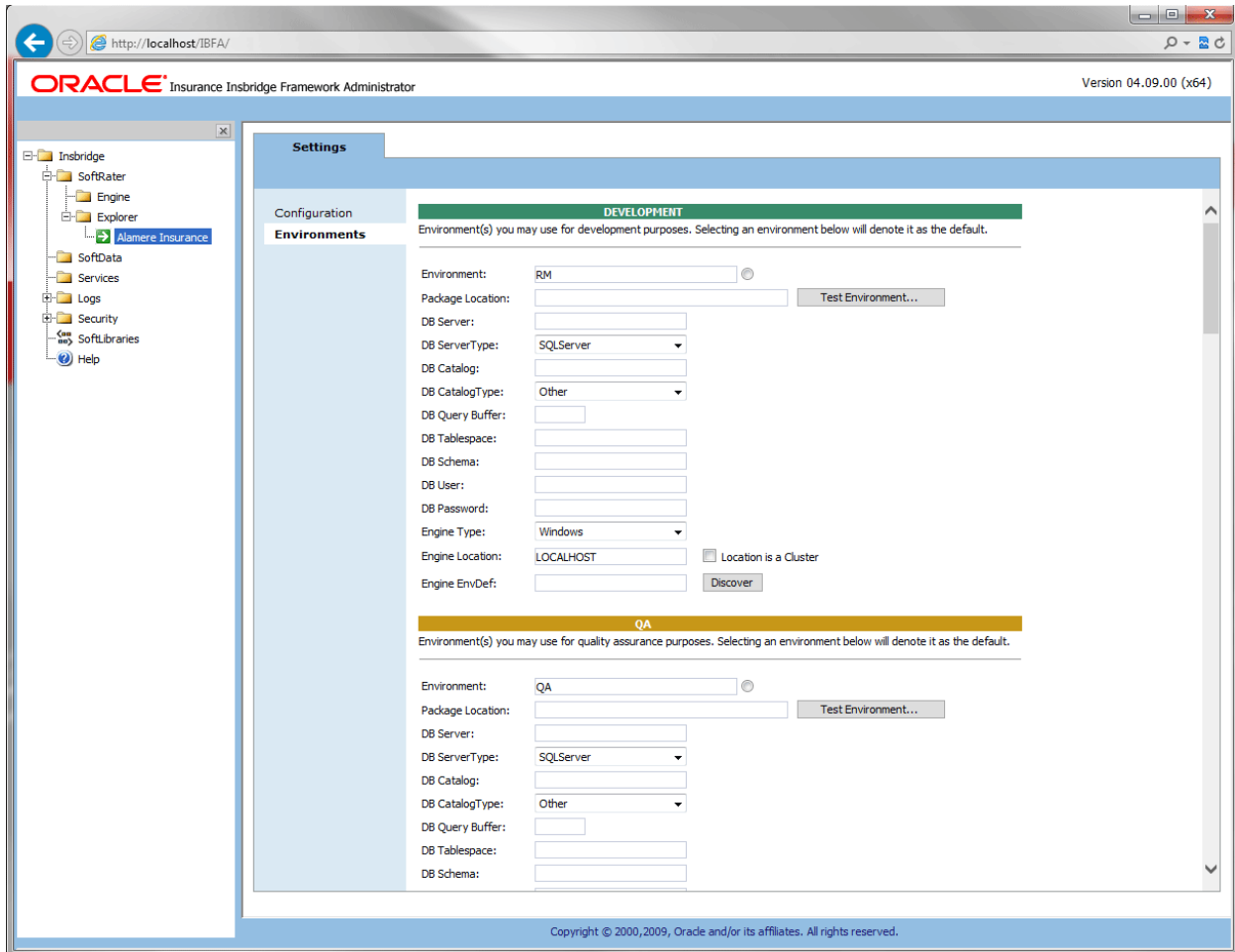


Figure 35 Editing Environment

Creating a SoftRater Environment

A SoftRater environment may be completed at installation or can be added at a later time. A SoftRater environment can only be on a Windows. There is no limit to the number of SoftRater environments that you can have.

1. The **Environment Name** will be complete. No changes are needed.
2. Enter in the file path where you want packages stored in the **Package Location**. Use the Test Environment option to have the location created for you.
3. Enter in the **DBServer** name or IP address. This is the database server where the SoftRater database was restored or created.

4. The **DB Server Type** will be **SQL Server**.
5. The **DB Catalog** is the name of the SoftRater database restored in SQL Server.
6. The **DB Catalog Type** is **SoftRater**.
7. **DB Query Buffer**, **DB Tablespace** and **DB Schema** are not required for a SoftRater for Windows (SoftRater Node) environment.
8. Enter the **DB User** name and **Password**.
9. The **Engine Type** is **Windows**.
10. The **Engine Location** is the location of where you installed the SoftRater engine. You can use the machine name or IP address. Most SoftRater installations have a local engine location. If the engine location is not on the local machine, enter the server name or IP address where the IBFA engine is located. Do not change LOCALHOST to the name or IP address of the local machine.
11. The **Engine EnvDef** is the machine name if the engine is located on a different server. You can use the machine name or IP address.
12. Click **SAVE** to save your entries.

Step 3 – Adding a Virtual File Server

Virtual file server management allows you to set up a link to servers that are in different locations where packages can be downloaded. In a typical QA environment, you will set up a Virtual File Server to point back to the QA logical environment that you created in your RateManager Development environment.

This step is necessary if you want to copy and load packages from environment to environment, however, if you do not have the information ready. You can do this at a later time.

1. From the Configuration Page, click the **Virtual File Server Management** link.

Virtual File Server Management

There are times when you must download SoftRater packages from different locations. These locations require a domain name of an ip-address of the particular server.



Figure 36 Virtual File Server Management Screen

2. This will open the **Virtual File Server Management** window.

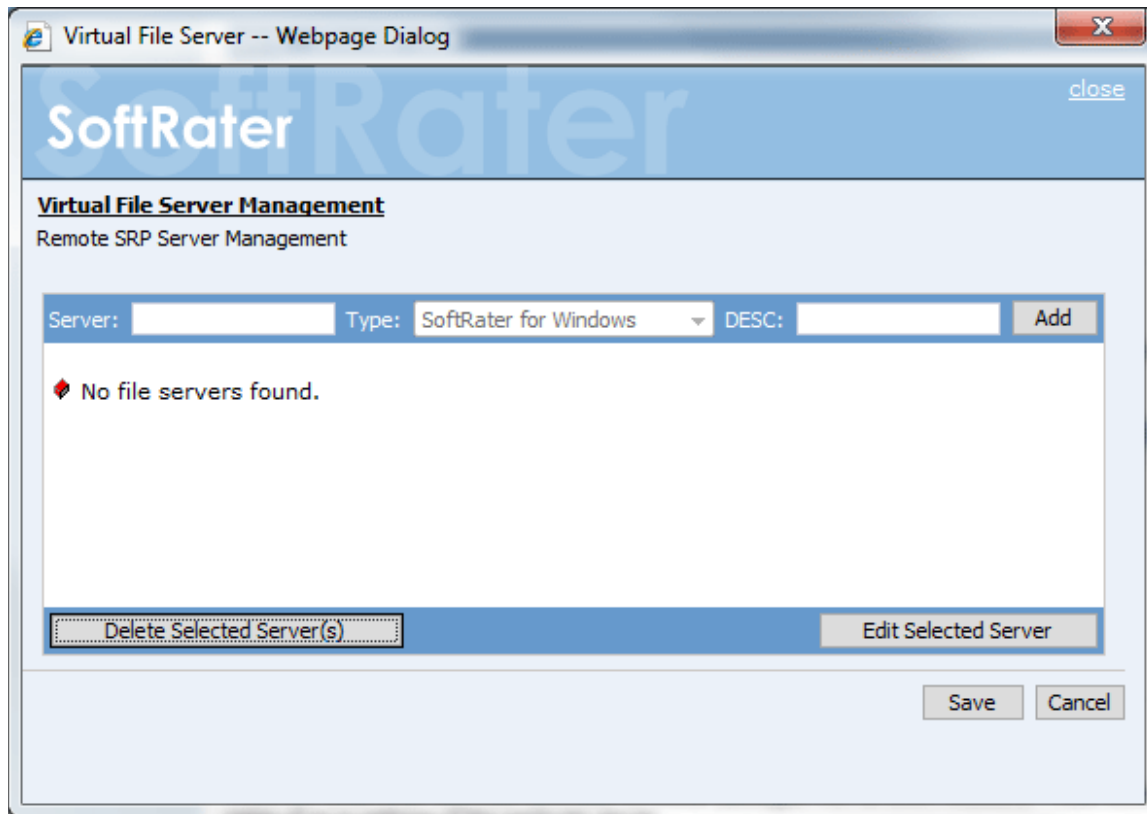


Figure 37 Virtual File Server Management Window

3. Enter the name of the server and a description. Take care when entering the server name. This field cannot be edited. If you have made a mistake, you must delete and re-enter.
4. Click **Add** to add the server to the list. Enter in as many servers as you need.
5. When you are finished, click **Save** to save your work and return to the previous screen.

STEP 8: VERIFYING THE COMPONENT SERVICES

Next, you should verify the component services.

1. Click **Start→Administrative Tools→Component Services**.
2. Expand the **Component Services** option under console Root.
3. Expand **Computers→My Computer→COM+ Applications**.
4. Expand each Insbridge **COM+ library** to make sure there are components listed underneath each compartment.

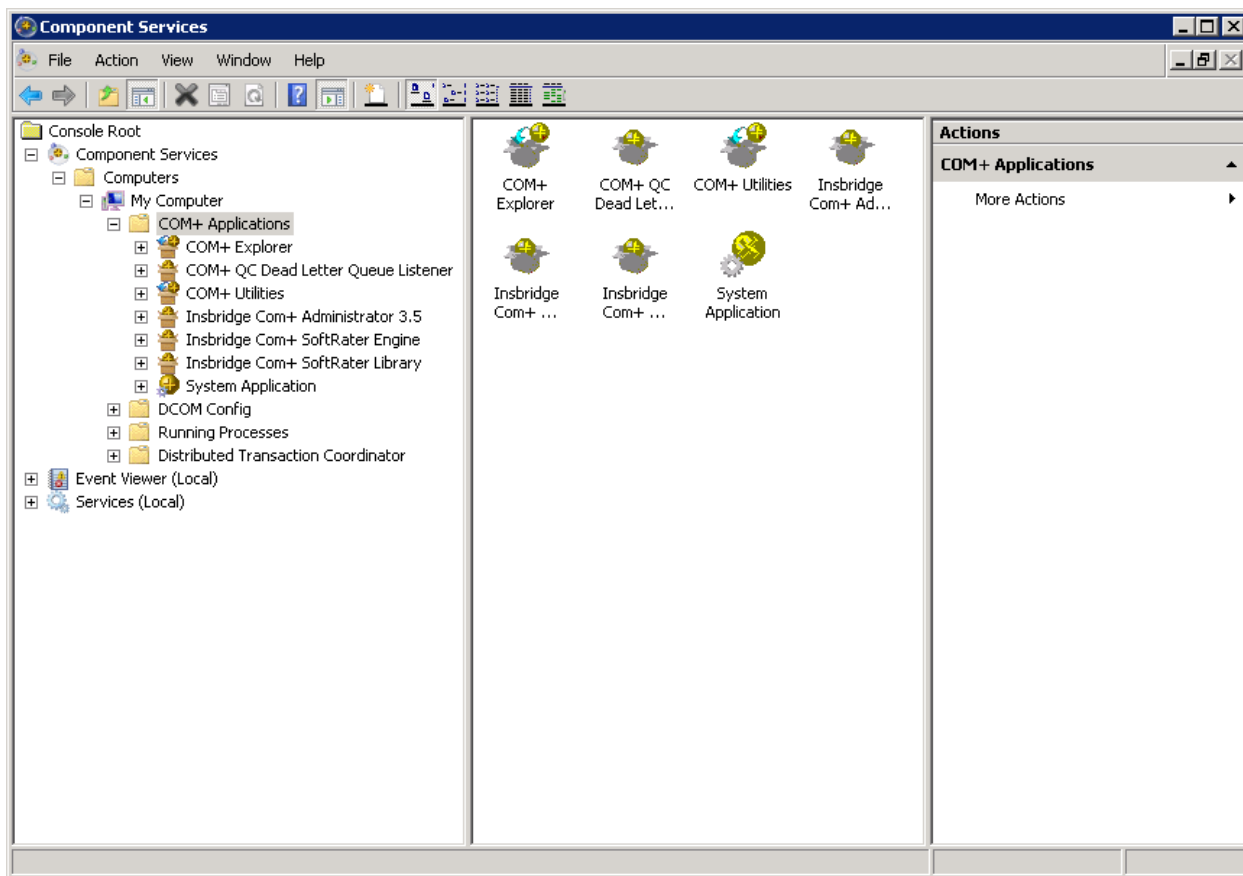


Figure 38 Component Services

There should be 3 Insbridge Com+ Applications libraries:

- Insbridge Com+ Administrator 4.5
- Insbridge Com+ SoftRater Engine
- Insbridge Com+ SoftRater Library

Verify the Identity of the Com+ Applications Libraries

Please note that you should not have to make any changes to any COM+ Application library. The installation will automatically apply the Insbridge user name and password that you created earlier to the necessary libraries.

1. Select the Insbridge Com+ Administrator 4.5.
2. Right click and select Properties.
3. Select the Identity tab.
4. Verify that the User is Insbridge. If the user is System Account or is not set to the Insbridge user, change to the Insbridge user set up earlier.

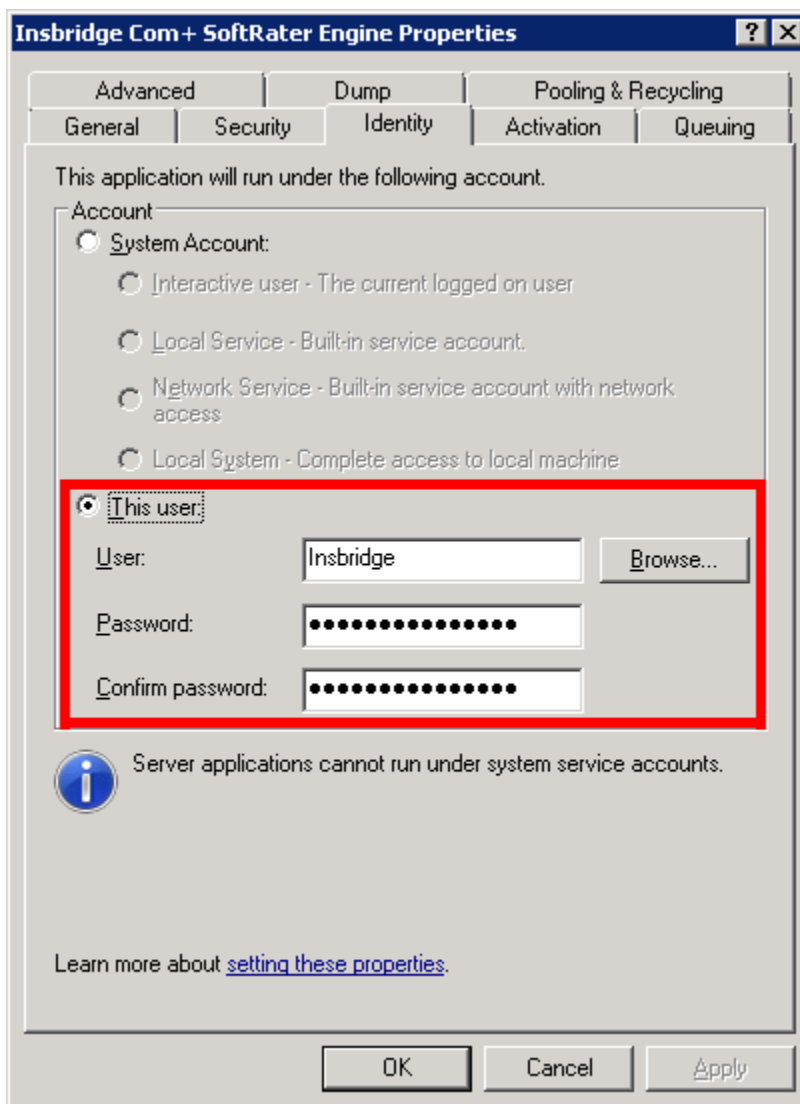


Figure 39 Updating Com Plus to the Insbridge User

5. Repeat for the other com+ services.

NOTE: *If any COM+ library is missing, run the Insbridge install again from the msi file and choose uninstall. Then rerun the IBFA install. Uncheck the RateManager Install. Then check again to see if all the libraries are listed. If they are still not listed, please log a Service Request using My Oracle Support at <https://support.oracle.com/>.*

Please note that you should not have to make any changes to any COM+ Application library. The installation will automatically apply the Insbridge user name and password that you created earlier to the necessary libraries. If you change the password, you will have to change the password in all three of the Insbridge Com+ libraries. On each library, right click, select Properties, select the Identity tab, enter in the new password.

STEP 9: INSTALLING THE OBI PUBLISHER

OBI Publisher is necessary for reports. If you do not plan on using reports in IBFA, you do not need to install this program.

1. Unzip the OBI_PUBLISHER

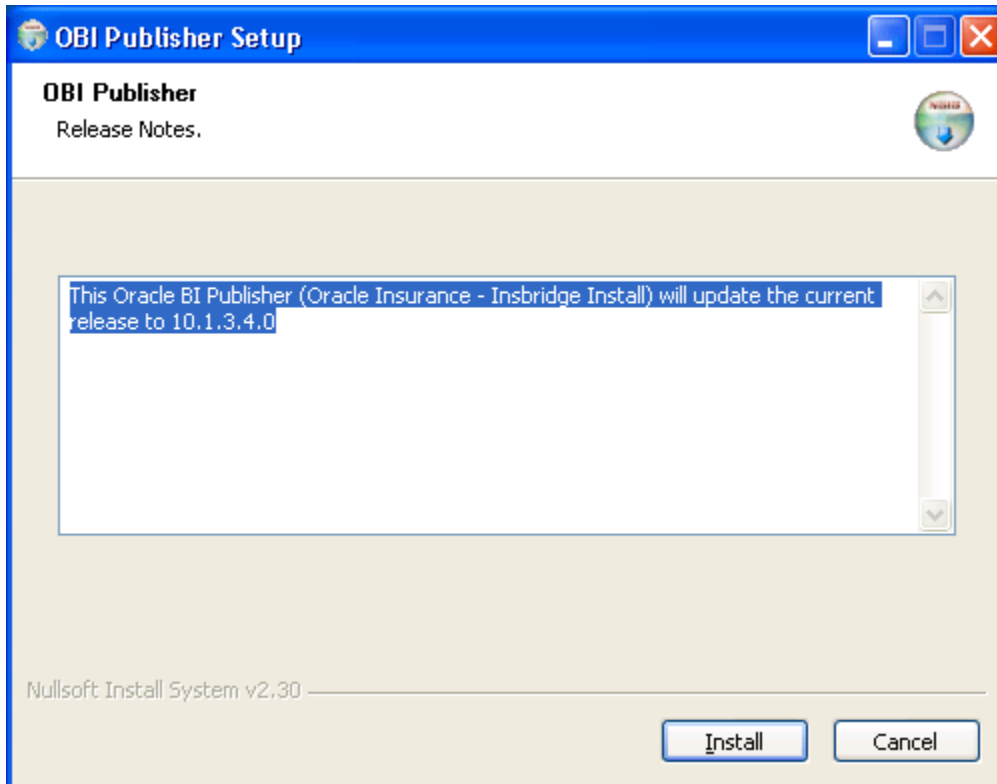


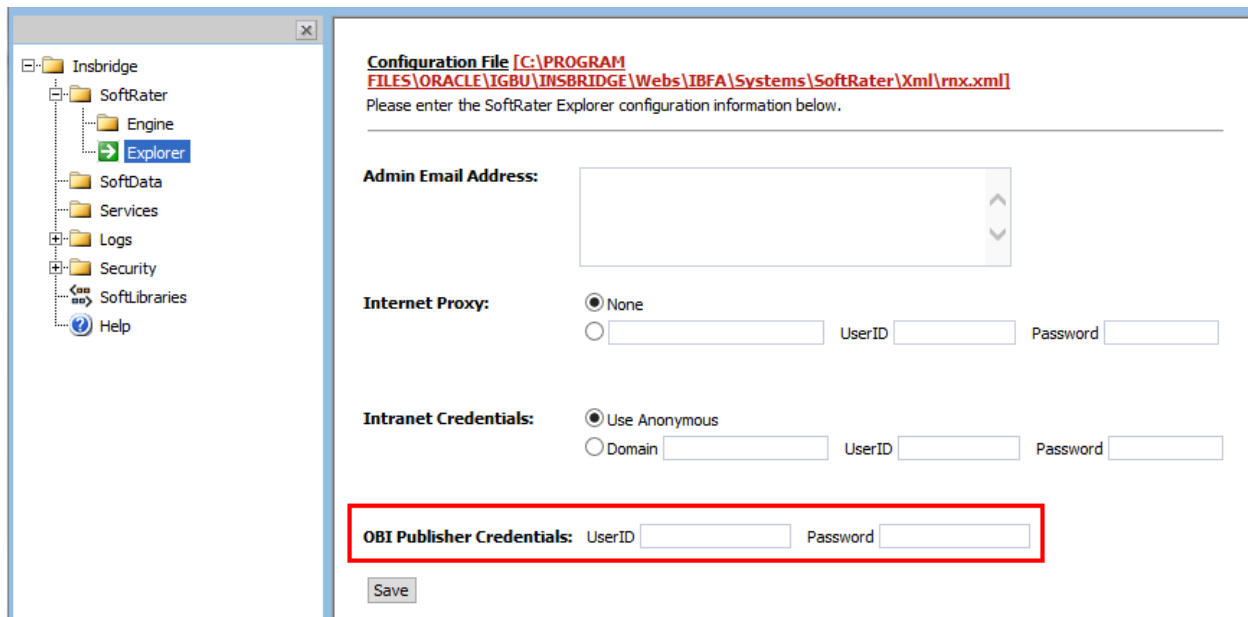
Figure 40 Installing OBI Publisher

2. Click **Install**. A progress screen will be displayed.
3. When complete, click **Close**.
4. In order for OBI Publisher to be available to users, you must start the **Insbridge Message Service**. The Insbridge Message Service can be started from IBFA or from the Server Manager in Windows 2008.

NOTE: The location and port for OBI Publisher is <http://localhost:9704/xmlpserver/>. This information may be needed if you have to make a request to your company's infrastructure and request the security team to open the ports used by Publisher.

OBI Security

The OBI Publisher requires a default User ID and password to be entered in IBFA. OBI is required to create certain reports in RateManager. Users will receive error messages if the OBI Publisher Credentials are not completed.



The screenshot shows the configuration window for the SoftRater Explorer. The left sidebar displays a tree view with folders: Insbridge, SoftRater (containing Engine and Explorer), SoftData, Services, Logs, Security, SoftLibraries, and Help. The Explorer folder is selected. The main content area shows the configuration file path: **Configuration File [C:\PROGRAM FILES\ORACLE\IGBU\INSBRIDGE\Web\IBFA\System\SoftRater\Xml\rnx.xml]**. Below this, it says "Please enter the SoftRater Explorer configuration information below." The form includes fields for "Admin Email Address", "Internet Proxy" (with radio buttons for "None", "UserID", and "Password"), and "Intranet Credentials" (with radio buttons for "Use Anonymous", "Domain", "UserID", and "Password"). The "OBI Publisher Credentials" section, which includes "UserID" and "Password" input fields, is highlighted with a red rectangle. A "Save" button is located at the bottom left of the form.

Figure 41 OBI Publisher Credentials

1. On the left side menu, select SoftRater-> Explorer.
2. Locate the OBI Publisher Credentials.
3. Enter the default user name and password.

User ID: Administrator
Password: Administrator

4. Click Save to save your entry. You must click Save prior to exiting the page.

Updating OBI Publisher Password

You can immediately update the OBI Publisher password if you want. The password must be updated in OBI Publisher and then in IBFA.

1. Enter the OBI Publisher console. <http://localhost:9704/xmlpserver> where localhost is the machine where IBFA/RM is installed.
2. Select the Admin tab.
3. Under Security Center, select Users.
4. Select the administrator Username.

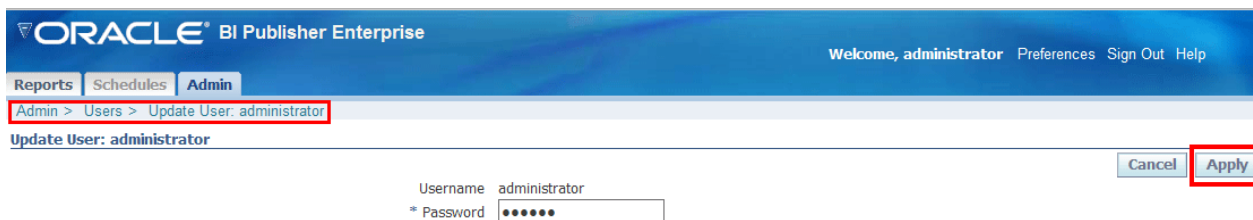


Figure 42 Updating the OBI Publisher Password

5. Enter in a new password and click Apply. This updates the Administrators password.
6. Sign out of OBI Publisher.
7. Enter IBFA.
8. Open the SoftRater Explorer Configuration window. Enter the same password in the OBI Publisher Credentials.
9. Click Save. The password has been updated.

NOTE: A login screen is displayed on IBFA for new installs. An upgrade will not reset the current security setting. For example, if a login was not required for IBFA, upgrading to release 04.09.xx will not change that. Please see the *Insbridge Upgrade Guide* for more information.

STEP 10: STARTING INSBRIDGE SERVICES

It is also recommended that you start the Insbridge Task Manager as well. The Insbridge Task Manager is a task queue that lists the tasks that are scheduled to be performed as well as the last time the task was run and the status.

Insbridge Message Service

The Insbridge Message Service is a Message Queue Listener that will route all batched messages to an assembly (process) for execution. These processes may take resources and time to execute. Please consult with you system admin before configuring the number of listeners per process.

Message Process

Batch Rating

If you see this message, you have not requested a listing from the selected spoke client. Clicking View Messages will provide you with a list view of the first in - first out messages that are waiting to execute.

Insbridge Task Manager

The Insbridge Task Manager gives you the ability to execute daily, weekly, hourly, or by the minute.

(This process may take a while to execute)

| TASK | LAST RUN-DATE | START-TIME | STATUS |
|------|---------------|------------|--------|
| | | | |

Figure 43 Insbridge Services Screen

1. In **IBFA**, navigate to the **Services** page.
2. Next to Insbridge Message Service, click **Start**. After a few seconds, the buttons will refresh to indicate that the service is started.
3. Next to Insbridge Task Manager, click **Start**. After a few seconds, the buttons will refresh to indicate that the service is started.

NOTE: The location and port for OBI Publisher is <http://localhost:9704/xmlpserver/>. This information may be needed if you have to make a request to your company's infrastructure and request the security team to open the ports used by Publisher.

STEP 11: IMPORT INSBRIDGE REGISTRY KEY

The registry key from the RateManager/IBFA instance must be imported into the machine where the SoftRater for Windows is located. This will allow packages to be loaded and rated.

On the RateManager/IBFA Machine:

The Insbridge registry key located in HKEY_LOCAL_MACHINE→SOFTWARE→Insbridge is used to store all information for proper encryption of the SoftRater Packages (SRPs). This registry key should be exported to a text file and then imported into the SoftRater for Windows machine.

1. Select the Insbridge key: HKEY_LOCAL_MACHINE→SOFTWARE→Insbridge.
2. Right click and select **Export**.
3. Select a storage location for the file and **Save**.
4. Close out of Registry Editor.

On the SoftRater for Windows Machine:

1. Place the file you exported anywhere on the machine.
2. Click the file to start the import.
3. If the import fails, please correct any errors and try again.

STEP 12: CONNECTING SR-WIN TO THE IBFA

The new instance of SoftRater for Windows will now need to be connected to the original installation of RateManager/IBFA. This will allow packages and SRPs to be loaded and unloaded from development to QA or Production environments.

Open an Internet Explorer web browser and browse to the location of the original RateManager/IBFA.

http://SERVERNAME/ibfa/

Creating Environments

Next, you will need to create the same rating environment of the SoftRater for Windows.

1. Browse to **SoftRater**→**Explorer**→**Subscriber name**.

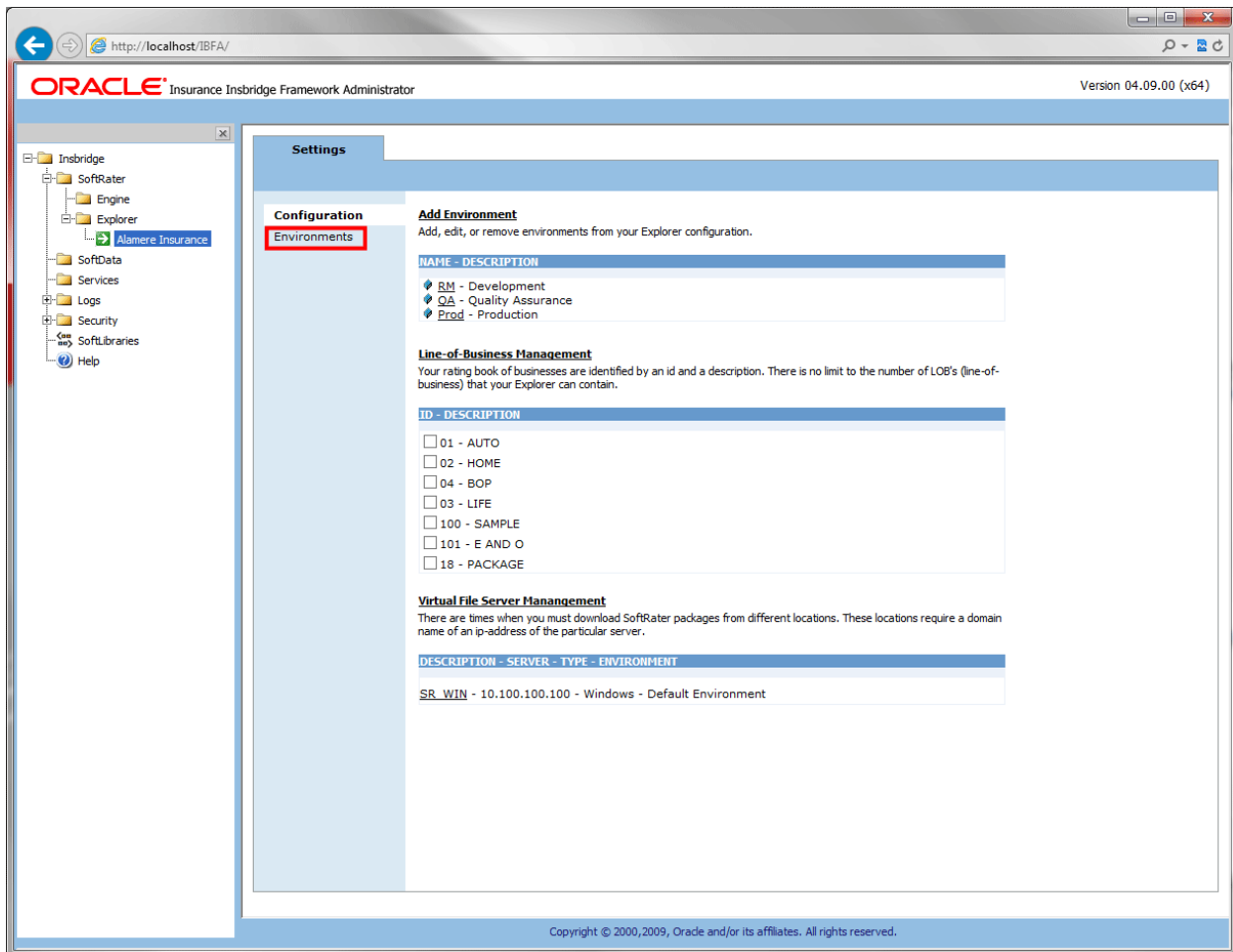


Figure 44 Create a Rating Environment

2. Click on **Add Environment**.

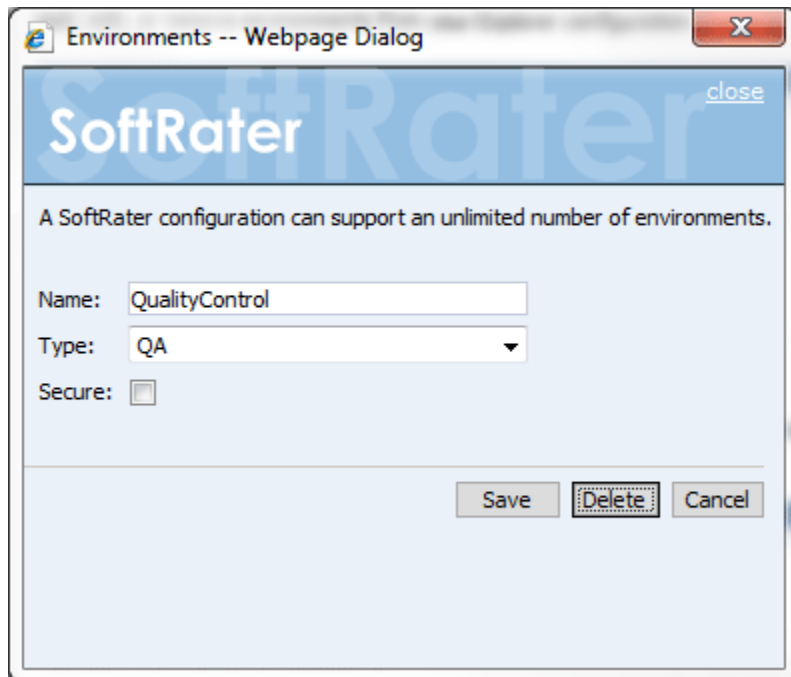


Figure 45 Entering Name and Environment

3. Enter the same Name and Type as the SoftRater for Windows instance.
4. After you have entered your logical environment, you must define it. Select the Environments link under the Config header on the left hand side to enter the configuration information for the newly created logical environment. You will be placed on the Environments screen.
5. Enter the exact same information as the SoftRater for Windows.
6. Click **Save** to save your information.

You can test connections and verify that you can load and unload packages.

CONTACTING SUPPORT

If you need assistance with an Oracle Insurance Insbridge Enterprise Rating System product, please log a Service Request using My Oracle Support at <https://support.oracle.com/>.

Oracle customers have access to electronic support through My Oracle Support. For information, visit <http://www.oracle.com/pls/topic/lookup?ctx=acc&id=info> or visit <http://www.oracle.com/pls/topic/lookup?ctx=acc&id=trs> if you are hearing impaired.

Address any additional inquiries to:

Oracle Corporation
World Headquarters
500 Oracle Parkway
Redwood Shores, CA 94065
U.S.A.

Worldwide Inquiries:
Phone: +1.650.506.7000
Fax: +1.650.506.7200
oracle.com

Index

A

- Adding
 - Local Machine Administrators Group.... 14, 18
 - Virtual File Server Management53
- Administrative Permissions 15

B

- Backup
 - Registry Key.....62

C

- Collation and Sort Order
 - SQL Server24, 41
- COM+ Library57
- Configuration Page
 - Virtual File Server Management53
- Configuring
 - Insbridge Framework Administrator .45, 63
 - Registry Editor.....33
- Creating
 - Default Rating Environment50, 63
 - Local User Account..... 17

D

- Database
 - IBSR Permissions44
 - MS SQL Support.....16
 - Permissions.....15
 - Security15
- db_owner Permissions44
- Default Rating Environment
 - Creating.....50, 63
- Definitions7
- Description
 - Subscriber49

E

- Edition Notice.....2
- Encryption
 - SoftRater Package62
- Environment Types.....51

- Export
 - Registry Key 62

H

- HKEY_LOCAL_MACHINE/SOFTWARE/Insbridge 14, 33, 62
- http://SERVERNAME/ibfa/ 45, 63

I

- IBFA
 - Rerun..... 57
 - Start Insbridge 15
 - Uninstall..... 57
- IBRM_xxxx
 - db_owner Permissions..... 44, 48
- IBSR Database
 - db_owner Permissions..... 44
- ID
 - Subscriber 49
- Insbridge
 - Definitions..... 7
 - Oracle Software Delivery Cloud 11
- Insbridge Framework
 - Installing 17
 - Local User Account 17
- Insbridge Framework Administrator
 - Configuring 45, 63
 - Extended Permission 15
- Insbridge Key 35
- Insbridge Message Service 15, 61
- Insbridge Permissions 40
- Insbridge Properties..... 38
- Insbridge Task Manager Service 15
- insbridge user
 - Registry Key 33
- Insbridge user
 - Registry Key 14
- Insbridge Web Server
 - SERVERNAME 45
- Insbridge_INSTALL_DIR 28
- Installation
 - Starting 28
- Installation Order 25
- Installation Program
 - Requirements 15, 26
- Installer
 - Admin Rights for Installation 15, 26
- Installing
 - Insbridge Framework 17

L

Local Machine Administrators Group
 Adding User 14, 18

Local User Account
 Insbridge Framework 17

M

Microsoft SQL Server 24

Missing
 COM+ Library..... 57

Mixed Mode Authentication
 Sql Server 24

N

Name
 Subscriber 49

O

Oracle Software Delivery Cloud
 Insbridge 11
 Required Programs 11

Overview
 Package 8
 Virtual File Server Management 53

P

Package
 Environment 8
 Overview 8

Part Numbers
 Oracle Software Delivery Cloud 11

Password
 Errors to COM+ Apps..... 15
 Local User Account..... 15

PDF Reader
 Oracle Software Delivery Cloud..... 11

Permissions
 db_owner 44
 Extended 15
 Insbridge Key 33
 Windows 2008..... 19

R

Registry Editor
 Configuring..... 33

Registry Key 62

insbridge user 33
 Insbridge user..... 14

Requirements
 Installation Program 15, 26
 SQL Server..... 16

Rerun
 IBFA 57

S

sa account
 SQL Server Enterprise Manager..... 41

Security
 Database 15

Server
 Admin Permissions 15

Server Setup
 Downloadable Packages..... 53

SERVERNAME
 Replacing 45, 63

Service
 Insbridge Task Manager 15

Settings
 SQL Server..... 24

Shared
 Insbridge System 18

SoftRater
 IBSR 16
 Supported Databases 16

SoftRater Package
 Encryption 62

SoftRater Packages
 Environments 8

SQL Server
 Collation and Sort Order 24, 41
 JDBC Driver Class 16
 Mixed Mode Authentication 24
 Requirements 24
 Residing on Separate Host 24
 Settings 24
 SoftRater Database Schema 16
 Supported Version 16
 User Account Requirements 16
 User Accounts 44

SQL Server Account
 ibru 41

SQL Server Enterprise Manager
 sa Privileges 41

Subscriber
 Information 49

T

Type

| | |
|-------------------|----|
| Subscriber | 49 |
| Types | |
| Environment | 51 |

U

| | |
|-------------------------------------|----|
| <i>Uninstall</i> | |
| <i>IBFA</i> | 57 |
| Unzip Utility | |
| Oracle Software Delivery Cloud..... | 11 |
| User | |
| Access to Services..... | 15 |
| Local User Account..... | 14 |
| User Accounts | |
| SQL Server | 44 |

V

| | |
|--------------------------------------|----|
| Validating | |
| COM+ Library | 55 |
| VFS Definition | 8 |
| Virtual File Server Definition | 8 |
| Virtual File Server Management | 53 |
| Adding | 53 |
| Overview | 53 |

W

| | |
|------------------|----|
| Windows 2008 | |
| Permissions..... | 19 |