

Oracle® Communications
EAGLE FTP Table Base Retrieval
Software Installation Guide
Release 4.5 and later
F21256-02

August 2020

Oracle Communications EAGLE FTP Table Base Retrieval Software Installation Instructions, Release 46.5 and later
Copyright © 2003, 2020, Oracle and/or its affiliates. All rights reserved.

This software and related documentation are provided under a license agreement containing restrictions on use and disclosure and are protected by intellectual property laws. Except as expressly permitted in your license agreement or allowed by law, you may not use, copy, reproduce, translate, broadcast, modify, license, transmit, distribute, exhibit, perform, publish, or display any part, in any form, or by any means. Reverse engineering, disassembly, or decompilation of this software, unless required by law for interoperability, is prohibited.

The information contained herein is subject to change without notice and is not warranted to be error-free. If you find any errors, please report them to us in writing.

If this is software or related documentation that is delivered to the U.S. Government or anyone licensing it on behalf of the U.S. Government, the following notices are applicable:

U.S. GOVERNMENT END USERS: Oracle programs, including any operating system, integrated software, any programs installed on the hardware, and/or documentation, delivered to U.S. Government end users are "commercial computer software" pursuant to the applicable Federal Acquisition Regulation and agency-specific supplemental regulations. As such, use, duplication, disclosure, modification, and adaptation of the programs, including any operating system, integrated software, any programs installed on the hardware, and/or documentation, shall be subject to license terms and license restrictions applicable to the programs. No other rights are granted to the U.S. Government.

This software or hardware is developed for general use in a variety of information management applications. It is not developed or intended for use in any inherently dangerous applications, including applications that may create a risk of personal injury. If you use this software or hardware in dangerous applications, then you shall be responsible to take all appropriate fail-safe, backup, redundancy, and other measures to ensure its safe use. Oracle Corporation and its affiliates disclaim any liability for any damages caused by use of this software or hardware in dangerous applications.

Oracle and Java are registered trademarks of Oracle and/or its affiliates. Other names may be trademarks of their respective owners.

Intel and Intel Xeon are trademarks or registered trademarks of Intel Corporation. All SPARC trademarks are used under license and are trademarks or registered trademarks of SPARC International, Inc. AMD, Opteron, the AMD logo, and the AMD Opteron logo are trademarks or registered trademarks of Advanced Micro Devices. UNIX is a registered trademark of The Open Group.

This software or hardware and documentation may provide access to or information about content, products, and services from third parties. Oracle Corporation and its affiliates are not responsible for and expressly disclaim all warranties of any kind with respect to thirdparty content, products, and services unless otherwise set forth in an applicable agreement between you and Oracle. Oracle Corporation and its affiliates will not be responsible for any loss, costs, or damages incurred due to your access to or use of third-party content, products, or services, except as set forth in an applicable agreement between you and Oracle.



CAUTION: Use only the guide downloaded from the Oracle Help Center (OHC) <https://docs.oracle.com/en/industries/communications/>
Before upgrading your system, access the My Oracle Support web portal (<https://support.oracle.com>) and review any Knowledge Alerts that may be related to the System Health Check or the Upgrade.

Before beginning this procedure, contact My Oracle Support and inform them of your upgrade plans. Refer to **Error! Reference source not found.** for instructions on accessing My Oracle Support.

Table of Contents

1. INTRODUCTION	1-4
1.1 OVERVIEW.....	1-4
1.2 SOFTWARE RELEASE NUMBERING.....	1-4
1.3 USER GUIDE CONVENTIONS	1-4
1.4 DOCUMENTATION ADMONISHMENTS	1-5
1.5 MY ORACLE SUPPORT (MOS)	1-5
1.6 EMERGENCY RESPONSE.....	1-5
1.7 ACRONYMS.....	1-6
1.8 RELATED PUBLICATIONS	1-6
2. HARDWARE AND SOFTWARE REQUIREMENTS	2-1
3. SOFTWARE INSTALLATION.....	3-2
3.1 OVERVIEW.....	3-2
3.2 FTRA SOFTWARE INSTALLATION ON WINDOWS	3-2
3.3.1 <i>Java Runtime Environment Installation.....</i>	<i>Error! Bookmark not defined.</i>
3.4 FTRA SOFTWARE INSTALLATION ON LINUX	3-11
3.4.1 <i>Java Runtime Environment Installation.....</i>	<i>3-12</i>
3.5 WINDOWS FTRA RELEASE 4.X OR LATER UPGRADE	3-12

List of Figures

Figure 1. Exploring the FTRA 4.X CD Using Windows Explorer.....	3-2
Figure 2. Exploring the FTRA 4.X Zip File Using Windows Explorer.....	3-3
Figure 3. Add or Remove Program Window	3-4
Figure 4. Selecting a Custom Installation	3-5
Figure 5. Creating New Folder for FTRA Installation.....	3-6
Figure 6. Rename New Folder to ftra	3-6
Figure 7. Copy the ftra_install.exe File	3-7
Figure 8. Extracting the FTRA Program Files Using the Command Prompt	3-8
Figure 9. Setting the Environment Variables.....	3-9
Figure 10. Creating a Shortcut to FTRA.....	3-10
Figure 11. Windows Upgrade Procedure from FTRA Release 4.x to FTRA Release 4.5	3-13

List of Tables

Table 1. Documentation Admonishments	1-5
Table 2. Acronyms	1-6

1. Introduction

1.1 Overview

The FTP-Based Table Retrieve Application (FTRA) was designed in conjunction with the FTP Retrieve and Replace feature to transfer EAGLE database tables using an FTP session to a remote server for offline processing. The FTRA is a stand-alone application that interfaces with one or more STP's. The FTRA can read database tables from the selected EAGLE using the EAGLE's retrieve commands. The EAGLE will convert the output of these retrieve commands into CSV (comma separated value) format files that FTRA ultimately collects. The FTRA also uses a local list of EAGLE commands: FTRA reads the contents of the commands file, validates the commands, and finally uses the command to collect data from the selected STP. FTRA also collects logs useful for event tracking and error message display.

The FTRA provides the following features through the use of a Graphical User Interface (GUI).

- STP Connection Configuration
- STP Connectivity Test
- FTP Server Configuration
- Retrieving the EAGLE database tables with the results converted to CSV files.
- Automated or manual retrieval of database tables from multiple STPs with the command line interface. The results are converted to CSV files.
- Validation of command files before being sent to the STP.
- Command file editing
- Viewing the log files for event tracking and error message display.

1.2 Software Release Numbering

Refer to Engineering Release Notes or other appropriate document with the most recent build numbers in order to identify the proper components (software loads etc.) that comprise the product's software release.

1.3 User Guide Conventions

To differentiate between references to objects, actions, literal entries, and user-supplied information, the following conventions are used in this user guide:

Menu selections and buttons are shown in bold, and the steps in a menu path are represented with ">". For example:

Select **Edit > STP Connection Configuration** from the menu.

The **Add** button is not enabled when the **STP Connection Configuration** menu opens.

Commands and entries that must be entered exactly as shown in this document are shown in the 10 point Courier bold font. For example:

Using a text editor (such as Notepad), add the following lines to the AUTOEXEC.BAT file:

```
SETFTRA_HOME="C:\<download_directory>"
```





```
SETJRE_HOME="C:\Program Files\Java\<Java bin directory>"
```

User-specific information is shown in italics and enclosed in “<>”. For example, the name of the folder you wish to use as the download directory in the previous example is shown as <download_directory>.

1.4 Documentation Admonishments

Admonishments are icons and text throughout this manual that alert the reader to assure personal safety, to minimize possible service interruptions, and to warn of the potential for equipment damage.

Table 1. Documentation Admonishments

	DANGER: (This icon and text indicate the possibility of personal injury.)
	WARNING: (This icon and text indicate the possibility of equipment damage.)
	CAUTION: (This icon and text indicate the possibility of service interruption.)
	Topple: (This icon and text indicate the possibility of <i>personal injury</i> and <i>equipment damage</i> .)

1.5 My Oracle Support (MOS)

MOS (<https://support.oracle.com>) is your initial point of contact for all product support and training needs. A representative at Customer Access Support (CAS) can assist you with MOS registration.

Call the CAS main number at 1-800-223-1711 (toll-free in the US), or call the Oracle Support hotline for your local country from the list at <http://www.oracle.com/us/support/contact/index.html>. When calling, make the selections in the sequence shown below on the Support telephone menu:

1. Select 2 for New Service Request
2. Select 3 for Hardware, Networking and Solaris Operating System Support
3. Select one of the following options:
 - For Technical issues such as creating a new Service Request (SR), Select 1
 - For Non-technical issues such as registration or assistance with MOS, Select 2

You will be connected to a live agent who can assist you with MOS registration and opening a support ticket.

MOS is available 24 hours a day, 7 days a week, 365 days a year.

1.6 Emergency Response

In the event of a critical service situation, emergency response is offered by the Customer Access Support (CAS) main number at 1-800-223-1711 (toll-free in the US), or by calling the Oracle Support hotline for your local country from the list at <http://www.oracle.com/us/support/contact/index.html>. The emergency response provides immediate coverage, automatic escalation, and other features to ensure that the critical situation is resolved as rapidly as possible.

A critical situation is defined as a problem with the installed equipment that severely affects service, traffic, or maintenance capabilities, and requires immediate corrective action. Critical situations affect service and/or system operation resulting in one or several of these situations:

- A total system failure that results in loss of all transaction processing capability
- Significant reduction in system capacity or traffic handling capability
- Loss of the system's ability to perform automatic system reconfiguration
- Inability to restart a processor or the system
- Corruption of system databases that requires service affecting corrective actions
- Loss of access for maintenance or recovery operations
- Loss of the system ability to provide any required critical or major trouble notification

Any other problem severely affecting service, capacity/traffic, billing, and maintenance capabilities may be defined as critical by prior discussion and agreement with Oracle.

1.7 Acronyms

An alphabetized list of acronyms used in the document that are not included in **Error! Reference source not found.**:

Table 2. Acronyms

CDE	Common Desktop Environment
FTRA	FTP-Based Table Retrieve Application
GUI	Graphical User Interface
OTN	Oracle Technology Network

1.8 Related Publications

[1] *EAGLE 46.8 System Health Check Guide, E54339*

[2] *EAGLE 46.8 Maintenance Guide, F11910*

[3] *EAGLE 46.8 Database Administration - System Management User's Guide, F11885*

For information about additional publications related to this document, refer to the Oracle Help Center site.

2. Hardware and Software Requirements

To run the offline application, a workstation on a Windows or LINUX platform is required.

The Windows workstation requires that the following hardware and software is installed.

- Windows® 2000/XP¹, Windows 7 Professional, Windows Server 2008 R2 or Windows 10 Professional
- Note: Windows 98 and Windows NT support is discontinued.²
- CPU: Pentium III 750MHz or faster
- RAM – Minimum 128 MB
- Disk Space – Minimum 500 MB + 500 MB per STP
- CD-ROM drive
- 10/100BaseT Ethernet connection to the LAN
- Static IP addressing
- Java™ Runtime Environment (JRE) 1.7³ or latest available

The Linux workstation requires that the following hardware and software is installed.

- CPU: Pentium III
- Processor speed - 750 MHz or faster
- RAM - Minimum 512 MB
- Disk Space - Minimum 500 MB + 500 MB per STP
- CD-ROM drive
- 10/100BaseT Ethernet connection to the LAN
- Static IP addressing
- Java™ Runtime Environment (JRE) 1.7³ or latest available

¹ Windows is a registered trademark of Microsoft Corporation in the United States of America and/or other countries.

² Windows Vista is not supported.

³ Oracle and Java are registered trademarks of Oracle and/or its affiliates. Other names may be trademarks of their respective owners. FTRA and Java are separate products, but FTRA requires Java to operate.

3. Software Installation

3.1 Overview

The installation and upgrading of the FTRA can be done locally or remotely thru a LAN. Since FTRA is a Java™ based application, it requires the Java™ Runtime Environment to be installed on your machine. The installation and upgrading of the FTRA can be accomplished in 5-10 minutes if the Java™ Runtime Environment had been previously installed and 30-90 minutes (depending upon the download speed of your internet connection if you are downloading the Java™ Runtime Environment software from Oracle's web site) if it has not been previously installed. The FTRA will not provide service during this time. If the FTRA is being upgraded, it will not be necessary to recreate directories or environment variables that already exist.

If the FTRA software is being installed for the first time, perform one of these procedures:

- 3.2 FTRA Software Installation on Windows
- 3.4 FTRA Software Installation on Linux

If the FTRA software is being upgraded to FTRA 4.5, perform one of these procedures:

- 3.5 Windows FTRA Release 4.x or Later Upgrade

Installation of the FTRA software can be done in one of two ways: if the release is 4.4 or earlier, an FTRA CD may be provided for installation; for 4.5 and subsequent releases, the FTRA software will be distributed via a downloaded zip file obtained from <https://edelivery.oracle.com>.

3.2 FTRA Software Installation on Windows

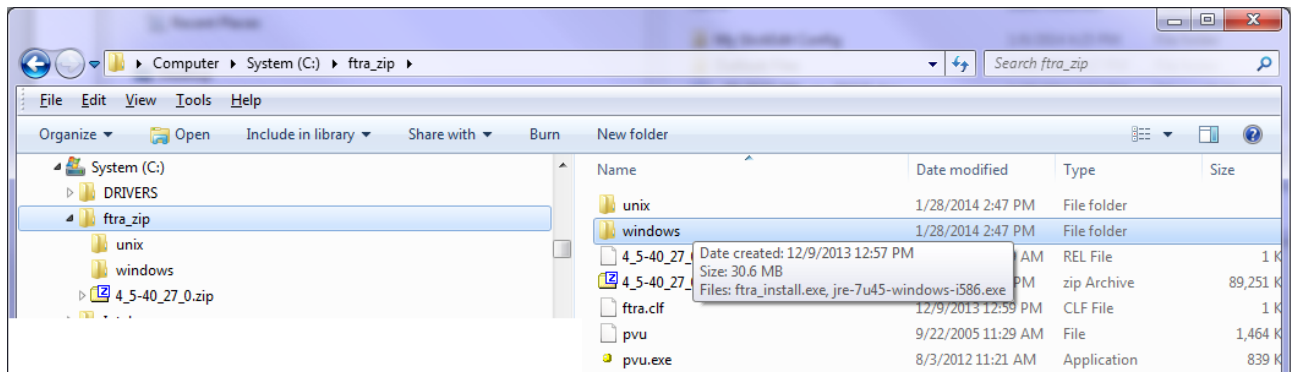
1. If you are installing FTRA using an FTRA CD, place the FTRA CD in the CD-ROM drive.
 - a. To see the contents of the FTRA CD, double click on **My Computer** icon on the Desktop of your computer. That action will open the Windows Explorer.
 - b. Click on the Folders tab at the top of the Windows Explorer menu and it will display the drives in your system.
 - c. Select the CD Drive by clicking on it and it will display the contents of the CD as shown in Figure 1.

Figure 1. Exploring the FTRA 4.X CD Using Windows Explorer.



2. Follow the steps below if the FTRA Software will be installed from a downloaded FTRA zip file.
 - a. Create a new folder to copy and unzip the FTRA zip file into it:
 - i. Select the C: drive.
 - ii. Right click and select **New -> Folder** as shown in Figure 2, and rename it ftra_zip.
 - b. Copy the downloaded FTRA zip file to the ftra_zip folder, and
 - c. Unzip the file to that same directory.

Figure 2. Exploring the FTRA 4.X Zip File Using Windows Explorer.



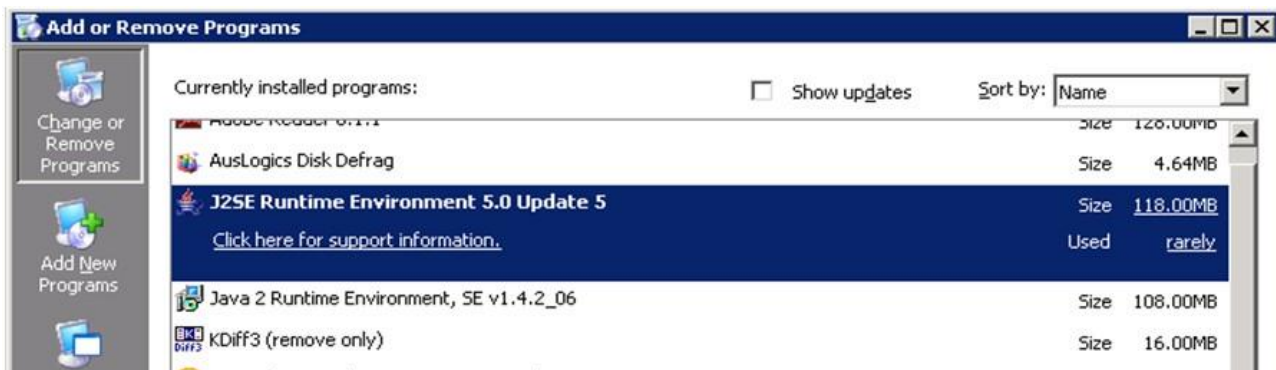
Proceed to Step 3 to install the Java Runtime Environment.

3. Install the Java™ 2 Runtime Environment, Standard Edition from the CD or ftra_zip directory:

You may not need to install the Java™ 2 Runtime Environment, Standard Edition Version 1.7 if it is already installed on your machine. Perform the following steps to verify the existing Java installation.

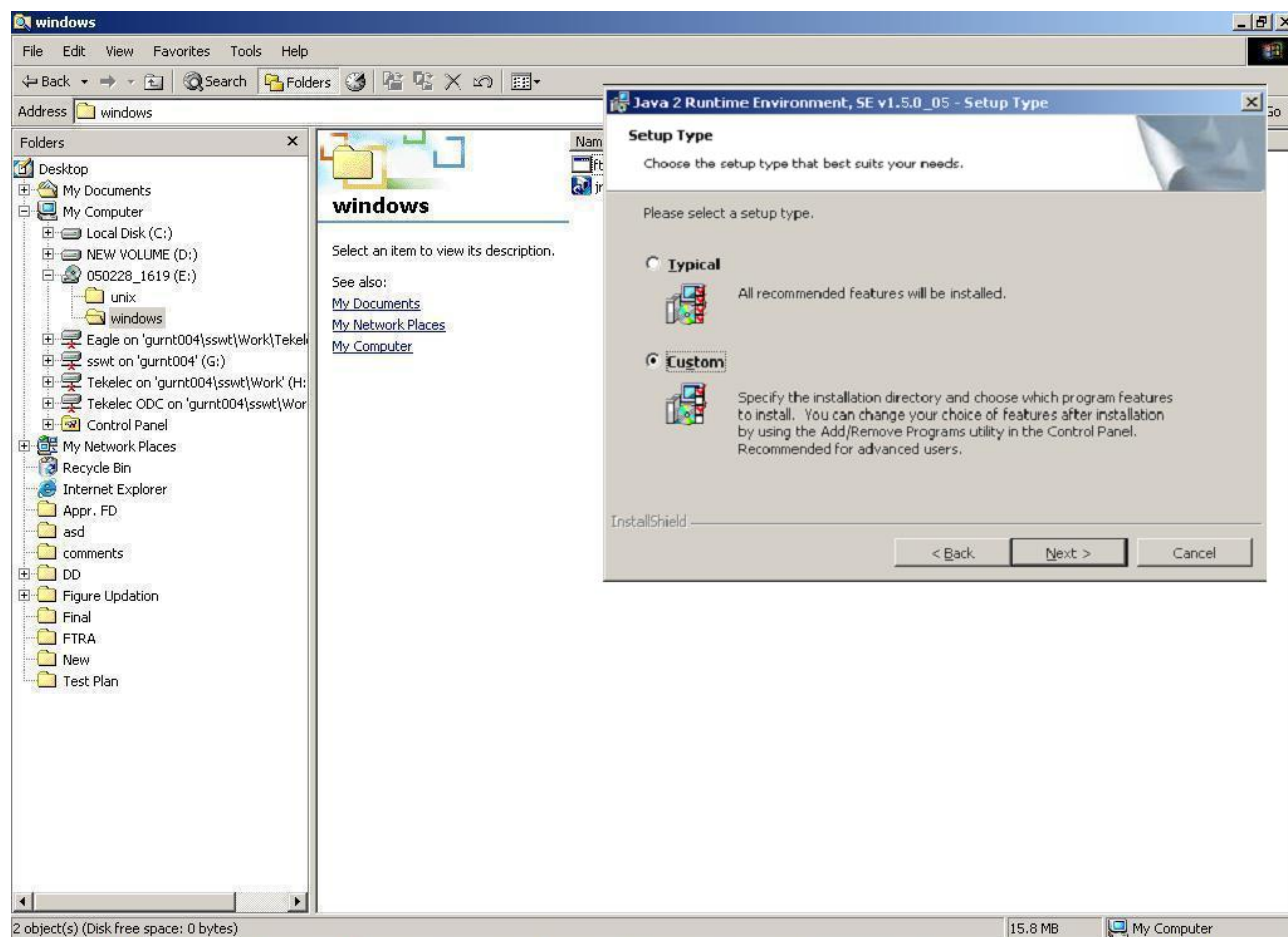
- a. Go to Start Menu->Settings->Control Panel ->Add or Remove Programs. That action will display all the programs that are installed on your computer.
- b. Verify the Java version installed:
 - i. If the Java™ 2 Runtime Environment, Standard Edition Version 1.7 is already installed on your computer (as shown in Figure 3), go to Step 5.
 - ii. If the Java™ 2 Runtime Environment Standard Edition Version 1.7 software is not installed on your computer, go to Step 4.

Figure 3. Add or Remove Program Window



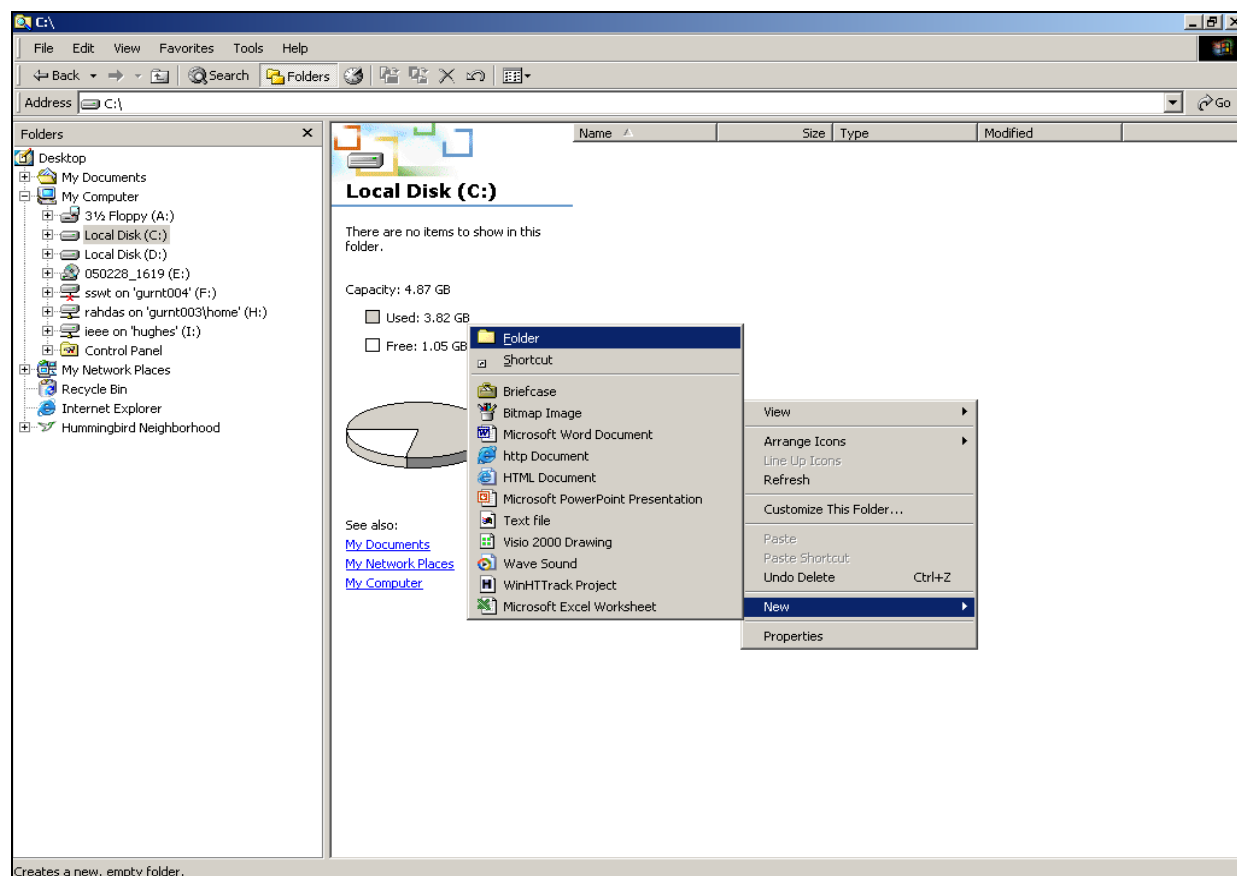
4. Install the Java™ 2 Runtime Environment software on your computer by performing these steps.
 - a. Select the CD Drive on your computer or select the ftra_zip directory.
 - b. Select the Windows folder by double clicking on it. The executable files required for the FTRA installation are displayed.
 - c. Double-click on the Java™ 2 Runtime Environment, Standard Edition installable icon in the Windows folder. The InstallShield Wizard opens.
 - i. For JRE 1.7, click on jre-7u45-windows-i586.exe.
 - d. Follow the InstallShield Wizard instructions. Click the **Yes/ Next** buttons in the InstallShield Wizard to proceed with the installation procedure.
 - e. The InstallShield wizard will ask you to choose the destination location for the installation of the Java™ 2 Runtime Environment, Standard Edition only when custom installation is selected. You may change it by clicking on the **Change** button, or you may use the default path given by the wizard. You need to remember this path, as the path will be required in Step 8.

Figure 4. Selecting a Custom Installation



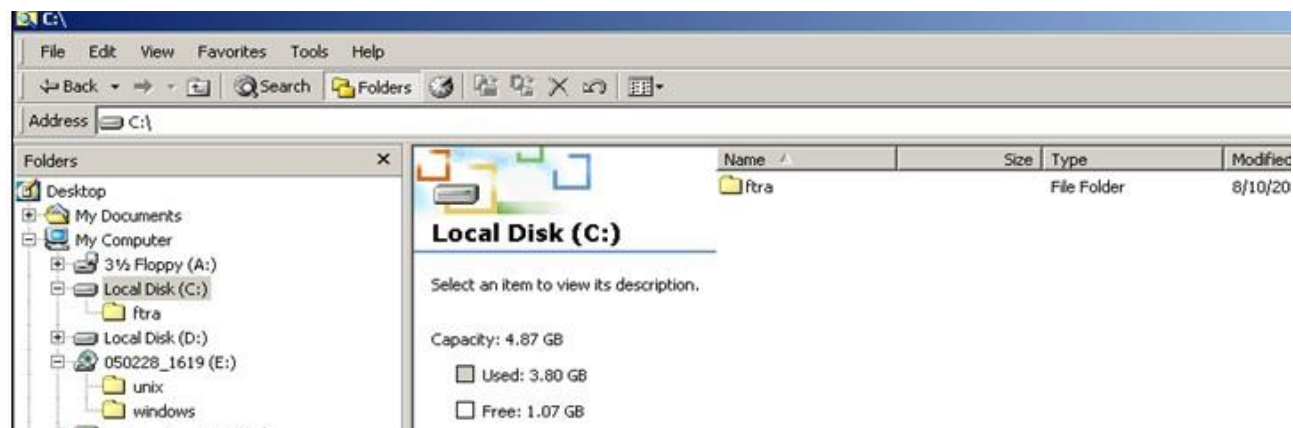
5. Create a folder on your computer for installing the FTRA package (the <base_directory>), for example, C:/ftra. The new folder can be created on any drive on your computer. Perform these steps to create the folder. For this example, a new folder named *ftra* is created on the C: Drive.
 - a. Select the C: Drive from Windows Explorer.
 - b. Right click and select **New>Folder** as shown in Figure 5. This will create a folder with the name **New Folder**.

Figure 5. Creating New Folder for FTRA Installation



- c. Rename this folder to *ftra* as shown in Figure 6.

Figure 6. Rename New Folder to ftra

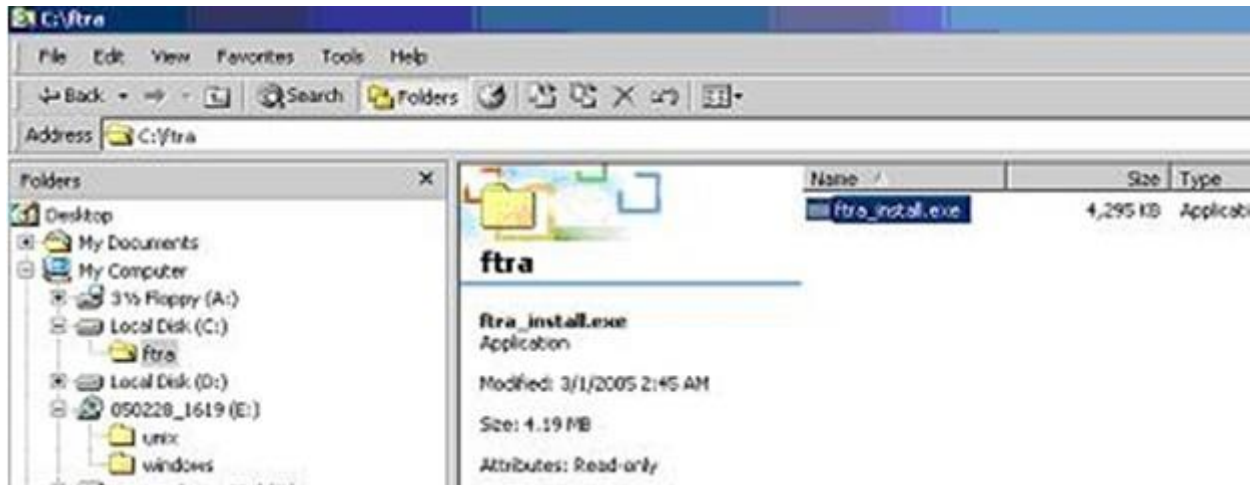


Note: If you are upgrading FTRA and a previous installation of the software exists inside the *ftra* folder, choose a different name for your *<base_directory>* or else choose to remove or rename your previous FTRA installation.

6. Copy *ftra_install.exe* file from the FTRA CD or the *ftra_zip* directory to the *<base_directory>* by performing these steps.
 - a. In Windows Explorer, select the CD Drive or the *ftra_zip* folder on your machine and go to the Windows folder.

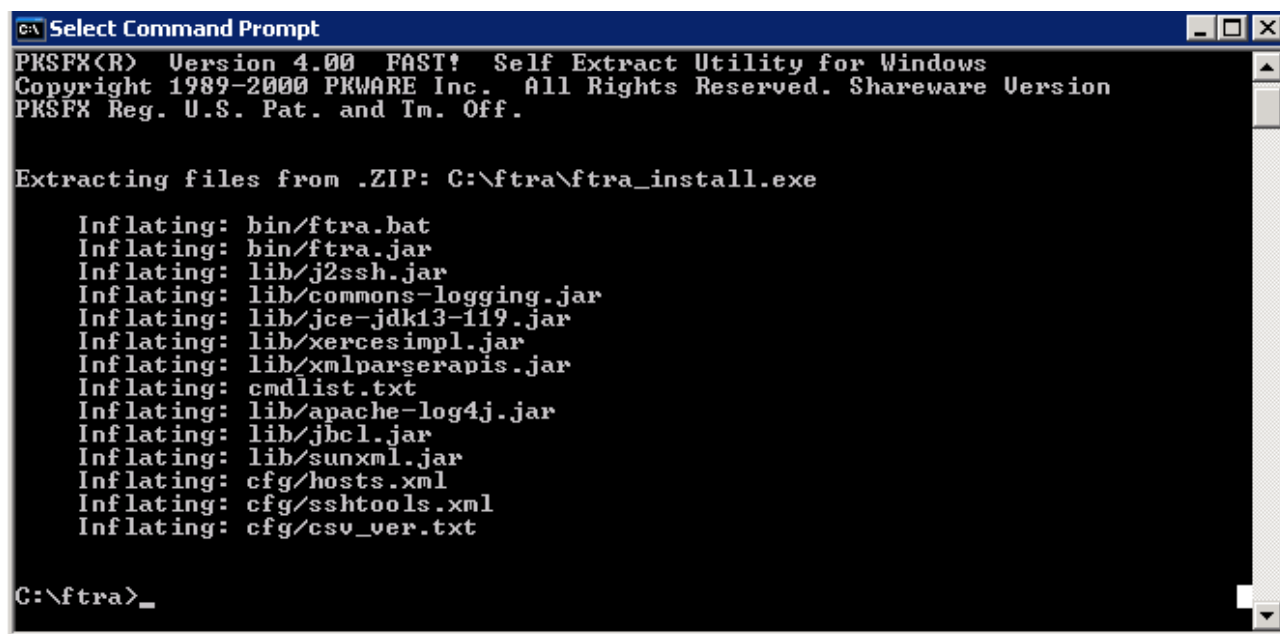
- b. Copy the *ftra_install.exe* file from the Windows folder to the *<base_directory>* directory as shown in Figure 7.

Figure 7. Copy the ftra_install.exe File



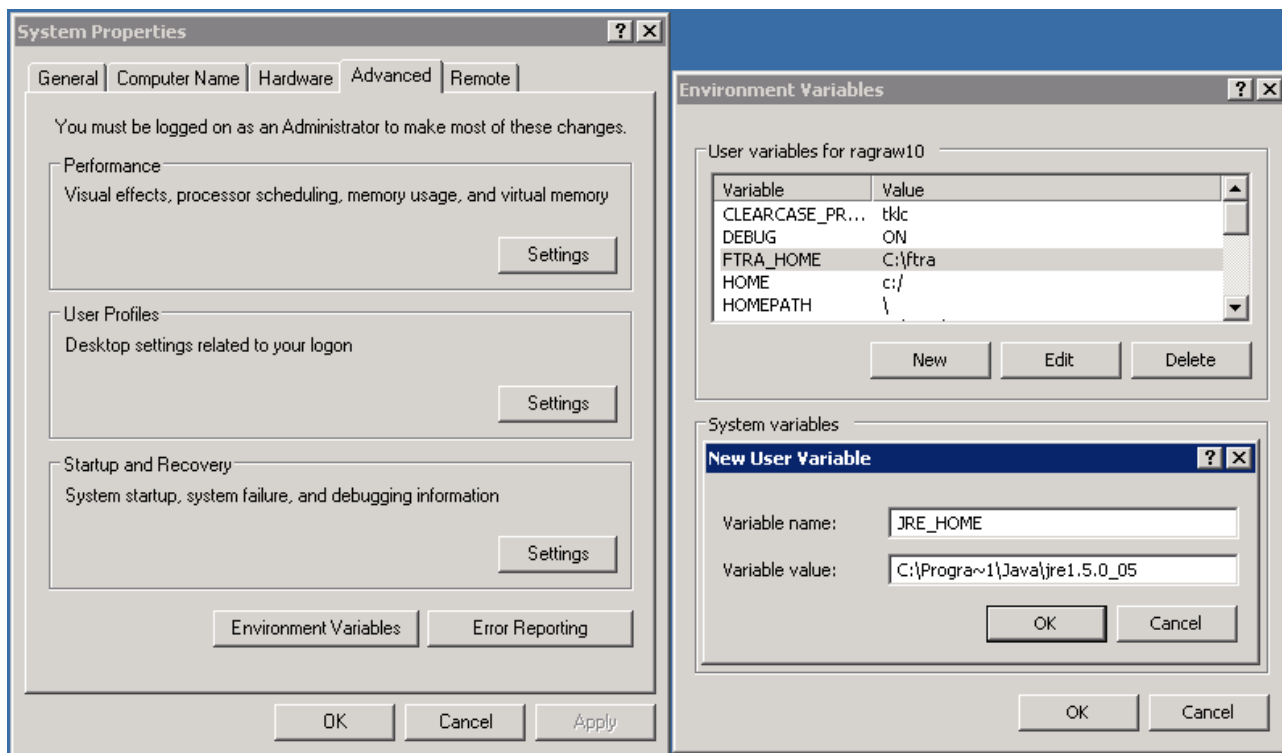
7. Extract the FTRA files using only the Command Prompt. Do not use a Windows Explorer window to extract the FTRA program files.
 - a. Open the Windows command prompt.
 - b. Change directory to the FTRA *<base_directory>*.
 - c. Extract the FTRA program files in *<base_directory>* as shown on Figure 8:
 - i. If your FTRA installation is version 4_5_0_0-40_34_0 or later, enter the following command:
ftra_install.exe
 - ii. If your FTRA installation is version 4_5_0_0-40_33_0 or earlier, enter the following command:
ftra_install.exe -d

Figure 8. Extracting the FTRA Program Files Using the Command Prompt



8. Set the system/user environment variables *FTRA_HOME* & *JRE_HOME*.
 - a. Right-click the **My Computer** icon on the desktop and select **Properties**.
 - b. In the **Advanced** tab, click **Environment Variables** and then click **New** as shown in Figure 9.
 - c. Under *User variables*, enter the following variable names and their values.
FTRA_HOME = C:\<base_directory_created_for_FTRA> (typically C:\ftra)
JRE_HOME = C:\Program Files\Java\<jre_path> (typically, the folder where Java is installed, and the Java path information recorded in Step 3).

Figure 9. Setting the Environment Variables



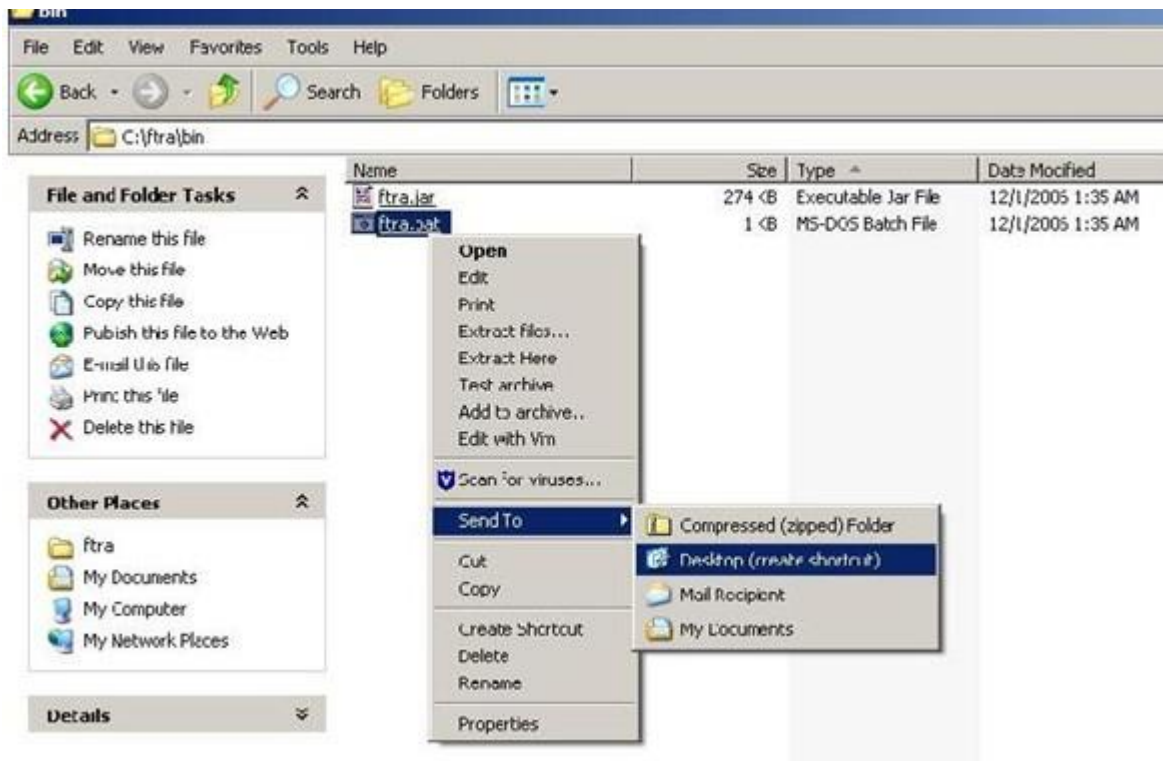
Note: If the directory name has spaces or is over eight characters long, the DOS short name may be required to define the environment variable. For example, using the JRE_HOME environment variable above, the user would define the variable as “C:\Progra~1\Java\<jre path>” (without the quotes) with maximum of eight characters for the directory name.

9. Create an FTRA shortcut on your desktop:
 - a. Using Windows Explorer, open the <base_directory>/bin folder.
 - b. Right click on the *ftra.bat* file and then select *Send To->Desktop (Create Shortcut)* as shown below in Figure 10. This will create the shortcut to FTRA on the desktop.

Note: For a new installation of FTRA Release 4.x, the bin folder will contain the *ftra.jar* and *ftra.bat* files only as shown in Figure 10.

Note: On multi-user systems, the shortcut should be placed in the Default User or in All Users desktop folder in order to make it available to all users.

Figure 10. Creating a Shortcut to FTRA



3.3

3.4 FTRA Software Installation on Linux

1. Place the FTRA CD in the CD-ROM drive if the software will be installed from a CD; or if the FTRA software was delivered (downloaded) as a zip file, create a temporary directory and copy the downloaded FTRA zip file to it. Unzip the contents into that temporary directory.
2. Check whether Java is already installed in your computer. Check the version of the Java 2 Runtime Environment installed by using the command **java -version**.
If the Java 2 Runtime Environment Standard Edition Version 1.7 is already installed in your computer, go to Step 4.
3. Java Runtime Environment Installation
 - a. To install the Java 2 Runtime Environment, Standard Edition from the CD, open **FileManager** and go to the CDROM drive. Follow the instructions in the [Java™ Runtime Environment Installation](#) procedure to install the Java 2 Runtime Environment Standard Edition Version 1.7.
 - b. To install the Java Runtime Environment from the web, please go to <http://java.sun.com/products/archive> and follow the instructions provided there.
4. Create an *<install_directory>* to install the FTRA software into. The preferred location where to install the FTRA software is *<HOME_DIRECTORY>/ftra*, but you may place it wherever you would prefer. Open **FileManager** and go to the preferred location. From **FileManager**, select **File > New Folder** and rename it **ftra**. Copy the file *ftra_install.tar* from the FTRA CD or the temporary zip location to the new *<install_directory>* (for example, *<HOME_DIRECTORY>/ftra*).

Note: You can identify the **HOME_DIRECTORY** with the command “**echo \$HOME**”.

5. Extract the files using command **tar -xvzf ftra_install.tar**
6. To display the environment settings use the following commands:

```
echo $FTRA_HOME
```

```
echo $JRE_HOME
```

An example of the possible output is:

```
echo $FTRA_HOME:
```

```
<ftra_install_directory> (for example, <HOME_DIRECTORY>/ftra)
```

```
echo $JRE_HOME:
```

```
<jre_install_directory> (for example, /usr/java)
```

If **FTRA_HOME** is already set to *<HOME_DIRECTORY>/ftra* and **JRE_HOME** is set to *<jre_install_directory>*, go to step 8.

7. Set the required environment variables by using **export** command from the shell prompt:

```
export FTRA_HOME=<ftra_install_directory> (for example, <HOME_DIRECTORY>/ftra)
```

```
export JRE_HOME=<jre_install_directory>
```

8. Change to the FTRA bin directory to run FTRA. (for example, `<cd/ftra/bin>`)

Run FTRA by entering this command. `./ftra`

3.4.1 Java Runtime Environment Installation

Please see section **Error! Reference source not found. Error! Reference source not found.**

3.5 Windows FTRA Release 4.x or Later Upgrade

1. Place the FTRA CD in the CD-ROM drive; or if the FTRA software is being delivered via the downloaded zip file, create a temporary directory to copy the downloaded FTRA zip file. Unzip the contents into that temporary directory.
2. From Windows Explorer, copy the `ftra_install.exe` file from the FTRA_CD or from the temporary zip location to the existing `<base_directory>` directory (see step 4 of the [FTRA Software Installation on Windows](#), procedure for details about the `<base_directory>`).
3. Extract the FTRA file(s) to the existing `<base_directory>`, using the Command Prompt only. Do not use a Windows Explorer window for the extraction.

From Windows command line, enter the `ftra_install.exe -d` command. This will create the sub-directories and extract the program files into the existing `<base_directory>`.

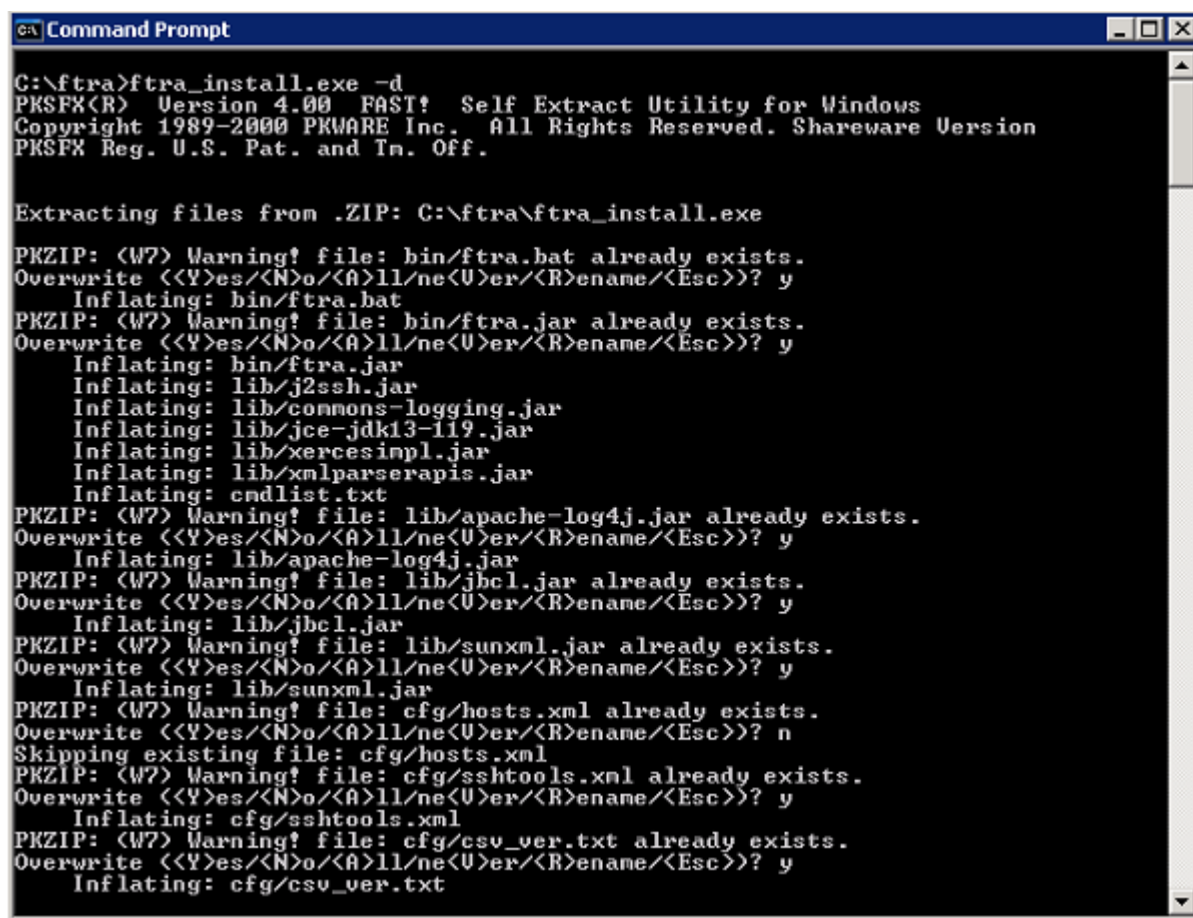
Note: Answer “yes”, when asked to overwrite an existing file. Follow the below recommendations when asked about overwriting of hosts.xml -

- **For FTRA release 4.x till 4.4** - If some host entries were previously provisioned in hosts.xml file that need to be retained, answer “no” when asked to overwrite eh hosts.xml file. Figure 11 shows the selection of “no” option for hosts.xml file.
- **For FTRA release 4.5** – It is mandatory to answer “yes” when asked to overwrite hosts.xml file.

FTRA Release 4.x or later has been installed.

4. Start the FTRA software. See the “FTRA Initialization” section in the FTP-Based Table Retrieve Application (FTRA) User Guide for more information on starting the FTRA software. The existing FTRA STP Connection Configuration data will automatically be converted during the FTRA system initialization.

Figure 11. Windows Upgrade Procedure from FTRA Release 4.x to FTRA Release 4.5



```
C:\ftra>ftra_install.exe -d
PKSPFX(R) Version 4.00 FAST! Self Extract Utility for Windows
Copyright 1989-2000 PKWARE Inc. All Rights Reserved. Shareware Version
PKSPFX Reg. U.S. Pat. and Tr. Off.

Extracting files from .ZIP: C:\ftra\ftra_install.exe

PKZIP: (W7) Warning! file: bin/ftra.bat already exists.
Overwrite <<Y>es<<N>o<<A>ll/ne<U>er<<R>ename<<Esc>>? y
  Inflating: bin/ftra.bat
PKZIP: (W7) Warning! file: bin/ftra.jar already exists.
Overwrite <<Y>es<<N>o<<A>ll/ne<U>er<<R>ename<<Esc>>? y
  Inflating: bin/ftra.jar
  Inflating: lib/j2ssh.jar
  Inflating: lib/commons-logging.jar
  Inflating: lib/jce-jdk13-119.jar
  Inflating: lib/xercesimpl.jar
  Inflating: lib/xmlparserapis.jar
  Inflating: cmdlist.txt
PKZIP: (W7) Warning! file: lib/apache-log4j.jar already exists.
Overwrite <<Y>es<<N>o<<A>ll/ne<U>er<<R>ename<<Esc>>? y
  Inflating: lib/apache-log4j.jar
PKZIP: (W7) Warning! file: lib/jbcl.jar already exists.
Overwrite <<Y>es<<N>o<<A>ll/ne<U>er<<R>ename<<Esc>>? y
  Inflating: lib/jbcl.jar
PKZIP: (W7) Warning! file: lib/sunxml.jar already exists.
Overwrite <<Y>es<<N>o<<A>ll/ne<U>er<<R>ename<<Esc>>? y
  Inflating: lib/sunxml.jar
PKZIP: (W7) Warning! file: cfg/hosts.xml already exists.
Overwrite <<Y>es<<N>o<<A>ll/ne<U>er<<R>ename<<Esc>>? n
  Skipping existing file: cfg/hosts.xml
PKZIP: (W7) Warning! file: cfg/sshtools.xml already exists.
Overwrite <<Y>es<<N>o<<A>ll/ne<U>er<<R>ename<<Esc>>? y
  Inflating: cfg/sshtools.xml
PKZIP: (W7) Warning! file: cfg/csv_ver.txt already exists.
Overwrite <<Y>es<<N>o<<A>ll/ne<U>er<<R>ename<<Esc>>? y
  Inflating: cfg/csv_ver.txt
```