

JD Edwards World

Quick Installation Guide

Release A9.4

E59269-01

April 2015

Describes how to prepare, download, load, and install JD Edwards World software.

Copyright © 2015, Oracle and/or its affiliates. All rights reserved.

This software and related documentation are provided under a license agreement containing restrictions on use and disclosure and are protected by intellectual property laws. Except as expressly permitted in your license agreement or allowed by law, you may not use, copy, reproduce, translate, broadcast, modify, license, transmit, distribute, exhibit, perform, publish, or display any part, in any form, or by any means. Reverse engineering, disassembly, or decompilation of this software, unless required by law for interoperability, is prohibited.

The information contained herein is subject to change without notice and is not warranted to be error-free. If you find any errors, please report them to us in writing.

If this is software or related documentation that is delivered to the U.S. Government or anyone licensing it on behalf of the U.S. Government, then the following notice is applicable:

U.S. GOVERNMENT END USERS: Oracle programs, including any operating system, integrated software, any programs installed on the hardware, and/or documentation, delivered to U.S. Government end users are "commercial computer software" pursuant to the applicable Federal Acquisition Regulation and agency-specific supplemental regulations. As such, use, duplication, disclosure, modification, and adaptation of the programs, including any operating system, integrated software, any programs installed on the hardware, and/or documentation, shall be subject to license terms and license restrictions applicable to the programs. No other rights are granted to the U.S. Government.

This software or hardware is developed for general use in a variety of information management applications. It is not developed or intended for use in any inherently dangerous applications, including applications that may create a risk of personal injury. If you use this software or hardware in dangerous applications, then you shall be responsible to take all appropriate fail-safe, backup, redundancy, and other measures to ensure its safe use. Oracle Corporation and its affiliates disclaim any liability for any damages caused by use of this software or hardware in dangerous applications.

Oracle and Java are registered trademarks of Oracle and/or its affiliates. Other names may be trademarks of their respective owners.

Intel and Intel Xeon are trademarks or registered trademarks of Intel Corporation. All SPARC trademarks are used under license and are trademarks or registered trademarks of SPARC International, Inc. AMD, Opteron, the AMD logo, and the AMD Opteron logo are trademarks or registered trademarks of Advanced Micro Devices. UNIX is a registered trademark of The Open Group.

This software or hardware and documentation may provide access to or information about content, products, and services from third parties. Oracle Corporation and its affiliates are not responsible for and expressly disclaim all warranties of any kind with respect to third-party content, products, and services unless otherwise set forth in an applicable agreement between you and Oracle. Oracle Corporation and its affiliates will not be responsible for any loss, costs, or damages incurred due to your access to or use of third-party content, products, or services, except as set forth in an applicable agreement between you and Oracle.

Contents

Preface	v
Audience	v
Documentation Accessibility	v
Related Information	v
Conventions	v
1 Overview	
2 Part 1 – Prepare For Your Installation	
2.1 Review the Minimum Technical Requirement	2-1
2.2 Review the Installation Steps	2-1
2.3 Review the World Upgrade Resources Web Site	2-1
2.4 Contact Oracle Support Services	2-1
3 Part 2 – Download or Load your Software	
3.1 Scenario One – Download Using Oracle Software Delivery Cloud	3-1
3.1.1 When to Use this Scenario	3-1
3.1.2 Before You Begin	3-1
3.1.3 Installation Steps	3-1
3.2 Scenario Two – Load Software on Windows PC DVD	3-2
3.2.1 When to Use this Scenario	3-2
3.2.2 Before You Begin	3-2
3.2.3 Installation Steps	3-3
4 Part 3 - Install Your Software	
4.1 Install Your Software	4-1
4.1.1 What to Expect When the OUI Installation is Complete	4-1
4.1.2 Installation Steps	4-1
5 Part 4 – (Optional) Install Electronic Document Delivery	
5.1 (Optional) Install Electronic Document Delivery	5-1
5.1.1 Installation Steps	5-1

A Additional Software and Resources

A.1 JD Edwards World A9.4..... A-1
A.2 Oracle Business Intelligence Publisher (BI Publisher)..... A-1

B Media Differences

B.1 Oracle Software Delivery Cloud..... B-1
B.2 DVD Based Product Delivery B-1

C Map a Network Drive to the Root IFS Directory

C.1 Map a Network Drive on Your Windows PC..... C-1

D Download Tips

Preface

Welcome to the JD Edwards World Quick Installation Guide.

Audience

This guide is intended for implementers and end users of JD Edwards World Quick Installation.

Documentation Accessibility

For information about Oracle's commitment to accessibility, visit the Oracle Accessibility Program website at <http://www.oracle.com/pls/topic/lookup?ctx=acc&id=docacc>.

Access to Oracle Support

Oracle customers that have purchased support have access to electronic support through My Oracle Support. For information, visit <http://www.oracle.com/pls/topic/lookup?ctx=acc&id=info> or visit <http://www.oracle.com/pls/topic/lookup?ctx=acc&id=trs> if you are hearing impaired.

Related Information

For additional information about JD Edwards World applications, features, content, and training, visit the JD Edwards World pages on the JD Edwards Resource Library located at:

<http://learnjde.com>

Conventions

The following text conventions are used in this document:

Convention	Meaning
boldface	Indicates cautionary information or terms defined in the glossary.
<i>italic</i>	Indicates book titles or emphasis.

Overview

Thank you for using JD Edwards World for your business needs.

To install your JD Edwards World software, complete the following parts:

1. ["Part 1 – Prepare For Your Installation"](#)
2. ["Part 2 – Download or Load your Software"](#)
3. ["Part 3 - Install Your Software"](#)

Review the appendices at the end of this guide for information on additional software and resources.

Note: In this document, the name System i includes IBM servers named AS/400, eServer iSeries, System i5, System i or Power Systems running the IBM i for Business operating system.



Part 1 – Prepare For Your Installation

This part contains these topics:

- [Section 2.1, "Review the Minimum Technical Requirement,"](#)
- [Section 2.2, "Review the Installation Steps,"](#)
- [Section 2.3, "Review the World Upgrade Resources Web Site,"](#)
- [Section 2.4, "Contact Oracle Support Services."](#)

2.1 Review the Minimum Technical Requirement

If you use JD Edwards World Payroll to calculate US and Canadian Payroll taxes, you will need to install the Enhanced Integration Q Series product provided by Vertex if not already installed.

2.2 Review the Installation Steps

Read the installation instructions found in this document before you install JD Edwards World.

2.3 Review the World Upgrade Resources Web Site

Although it is not required to install the software, you can find helpful information for planning your upgrade on <http://learnjde.com>

2.4 Contact Oracle Support Services

It is a good idea to contact Oracle Support Services to check for late-breaking news, which could affect your installation.

Part 2 – Download or Load your Software

This part contains these topics:

- [Section 3.1, "Scenario One – Download Using Oracle Software Delivery Cloud,"](#)
- [Section 3.2, "Scenario Two – Load Software on Windows PC DVD."](#)

This section covers installing from the Oracle Software Delivery Cloud web site or from a Windows PC DVD. After reviewing these two scenarios, choose the appropriate scenario for your situation and follow the detailed instructions.

3.1 Scenario One – Download Using Oracle Software Delivery Cloud

3.1.1 When to Use this Scenario

Use this scenario if:

- You are going to use the Oracle Software Delivery Cloud web site to obtain the World A9.4 base software

3.1.2 Before You Begin

Review the following checklist prior to starting your installation:

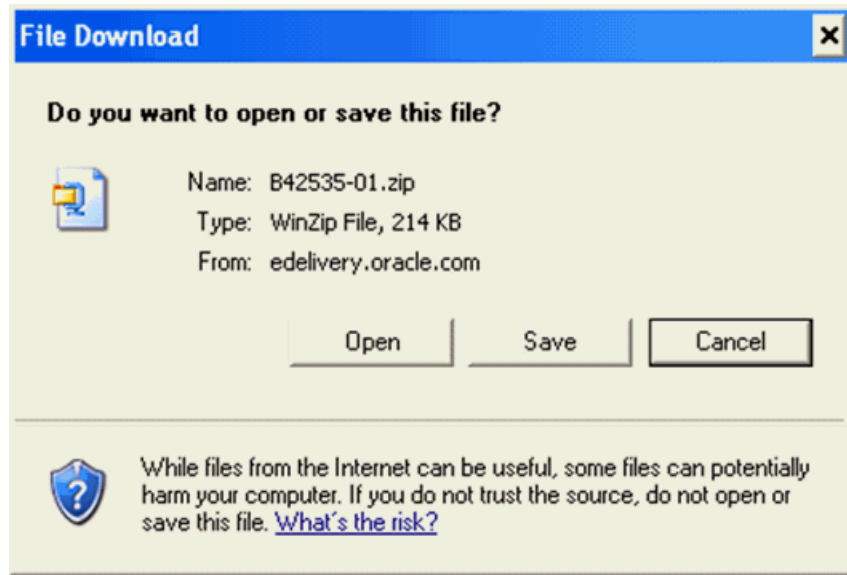
- Most browsers write download files to a temporary version in your Temporary Internet Files folder and then copy the temporary version to the folder you specify in the download. In addition, once the download files are unzipped, they take additional disk space. For these reasons, before you download and unzip, ensure you have 8 GB of hard disk space open on the drive where you specify the download folder, assuming your Temporary Internet Files folder is on the same drive as the download folder you specify.
- Be sure you have a login with QSECOFR level authority on the System i.

3.1.3 Installation Steps

Step 1

Sign on to the Oracle Software Delivery Cloud (<http://edelivery.oracle.com>) Web site and execute all downloads in the JD Edwards World A9.4 New Installs or Upgrades Single Byte or Double Byte Media Pack. For each file in the Media Pack, click Download. The File Download dialog box displays.

Figure 3–1 File Download Dialog box



Step 2

For the Quick Installation Guide Version A9.4, click Save and then specify a location on your workstation. Extract the Quick Installation Guide download.

Step 3

For the JD Edwards World A9.4 New Installs or Upgrades, Single Byte or Double Byte file, click Save and then specify your C: drive. This process creates a zip file. The name will be in the format Vxxxxx.zip.

Caution: Do not click the Open button in the File Download dialog box.

Step 4

To continue the software installation, proceed to the “Install Your Software” section.

3.2 Scenario Two – Load Software on Windows PC DVD

3.2.1 When to Use this Scenario

Use this scenario if:

- You are going to use a Windows PC DVD obtained from Oracle to obtain the World A9.4 base software

3.2.2 Before You Begin

Review the following checklist prior to starting your installation:

- Be sure you have a login with QSECOFR level authority on the System i.
- Review your Packing Slip

Your shipment may contain more than one Media pack. Inspect the contents of your shipment to make sure you have everything needed. Contact your local Oracle Support Services Center if you have any questions about your shipment. To locate a Oracle Support Services Center, access My Oracle Support (login required, <http://www.oracle.com/support/contact.html>).

Review the Contents of Each Media Pack.

Based on your order, your Media Pack contains the following items:

JD Edwards World A9.4 Orders:

- Quick Installation Guide, Version A9.4 CD
- JD Edwards World A9.4 New Installs or Upgrades, Single Byte or Double Byte DVD

3.2.3 Installation Steps

Step 1

Load the install DVD into your PC DVD drive.

Step 2

Open the DVD drive letter in Windows Explorer.

Step 3

To continue the software installation, proceed to the Install Your Software section.

Part 3 - Install Your Software

This part contains these topics:

- [Section 4.1.1, "What to Expect When the OUI Installation is Complete,"](#)
- [Section 4.1.2, "Installation Steps."](#)

This section covers running the Oracle Universal Installer (OUI) program to transfer your software from a Windows PC to your System i.

4.1 Install Your Software

4.1.1 What to Expect When the OUI Installation is Complete

The OUI process restores the JD Edwards World software libraries to your System i in a library named JDEINSTAL2. The Planner environment is also restored at this time. This step lays the foundation for installing a new JD Edwards World environment or upgrading existing JD Edwards World environments. Additionally, a library named JDEORACLE will be restored during the OUI process. This library has DEFAULT settings for security. More information will be in the *JD Edwards World Upgrade Guide*.

You will log into the A9.4 Planner Environment to plan and start an upgrade. The new install process runs automatically.

The process does not revise your existing World environments. Existing environments are revised to A9.4 only after an upgrade plan is created and executed for each environment. The A9.4 upgrade process is explained in detail in the *JD Edwards World Upgrade Guide for Upgrades from A7.3, A8.1, A9.1, A9.2, or A9.3* available at

<http://learnjde.com>

4.1.2 Installation Steps

Step 1

On the command line, type WRKSYSVAL QFRCCVNRST. If the system value is not '0', you must change it to '0' until the OUI process and Step 1 of the Upgrade process both complete.

Step 2

On the command line, type WRKOBJ JDEINSTAL2. If the library exists, delete it (DLTLIB).

Step 3

On the command line, type WRKOBJ JDFINS *LIB. If the library exists, delete it (DLTLIB). Do the same for library JDEINSTAL.

Step 4

From your download folder or from the DVD drive, locate the Vxxxx.zip file. Extract the contents of Vxxxx.zip to the root C: drive. Example C:\.

This unzip process creates a Disk1 folder on your C: drive. Example C:\Disk1.

Windows 7: If your PC is running Windows 7 and you cannot see the Vxxxx.zip file after the download completes, it may be in folder path 'C:\Users\<<your username>\AppData\Local\VirtualStore'

Step 5

Close your extract application.

Step 6

The IBM i Toolbox for Java contains a JAR file (jt400.jar) required by the installation program. You need to copy this JAR file from your System i Integrated File System (IFS) to the PC where you will run the OUI installation program.

Starting at the root directory, copy the file jt400.jar from the System i IFS path:

/qibm/ProdData/HTTP/Public/jt400/lib

to the PC path:

'C:\Disk1\stage\ext\jlib'.

Step 7

Using Windows Explorer, review the files in folder \Disk1\w94files.

You can see the following files:

- #JDEORACLE
- #JDFD_9400
- #JDFO_9400
- #JDFQ_9400
- #JDIFS_9400
- EDDIFS
- JDEA9.4
- JDEINST
- JDEINSTAL
- JDFINS
- JDWINS
- QINSTAPP

Step 8

Double-click the file Disk1\install\setup.exe.

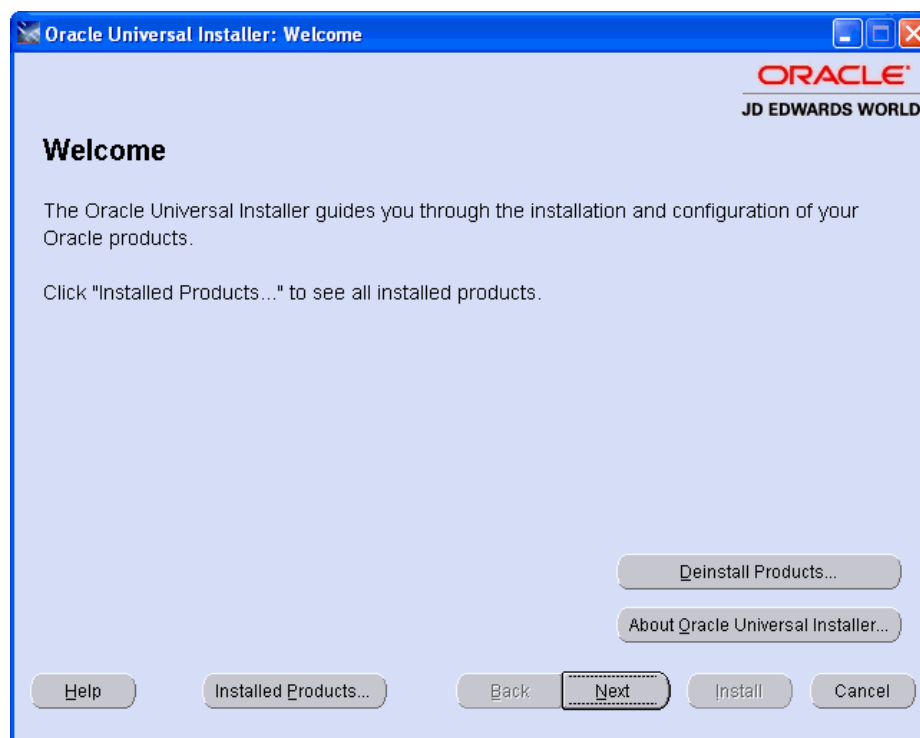
Oracle Universal Installer (OUI) starts.

Caution: Do not execute this program from within the extract program preview window.

After the Welcome screen displays, click Next to continue.

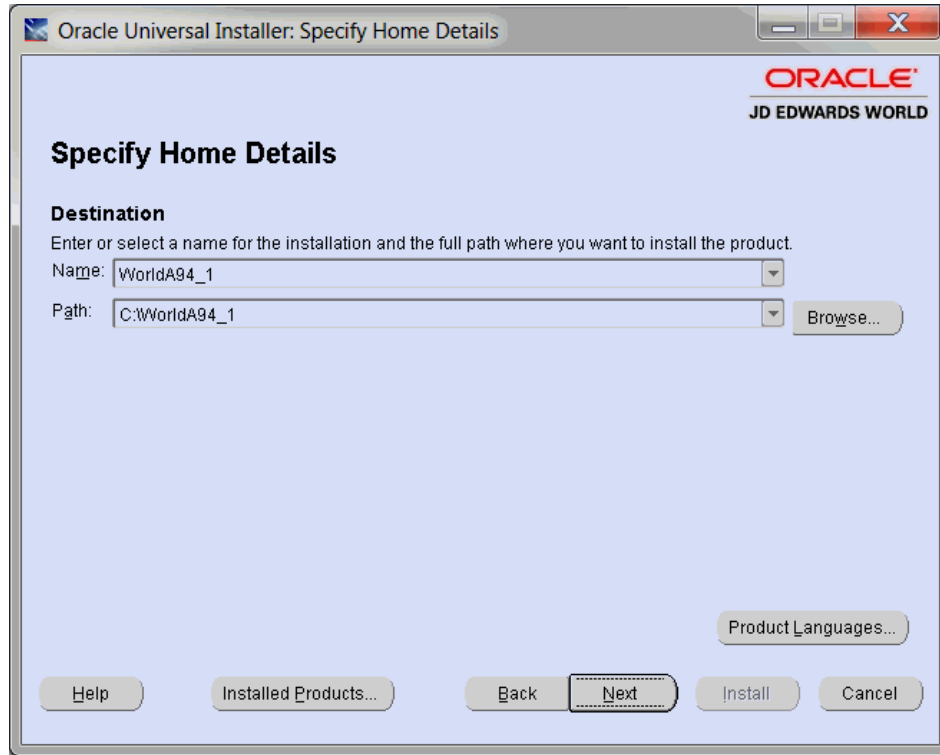
Note: The instructions for each screen appear before the screen capture. OUI verifies that the System i is running IBM Operating System V7R1 or above. If not, the OUI process will end.

Figure 4–1 Welcome screen

**Step 9**

OUI displays the Specify Home Details screen. WorldA94_1 defaults for the Name field and ensure the Path field changes to C:\ WorldA94_1. Click Next to continue.

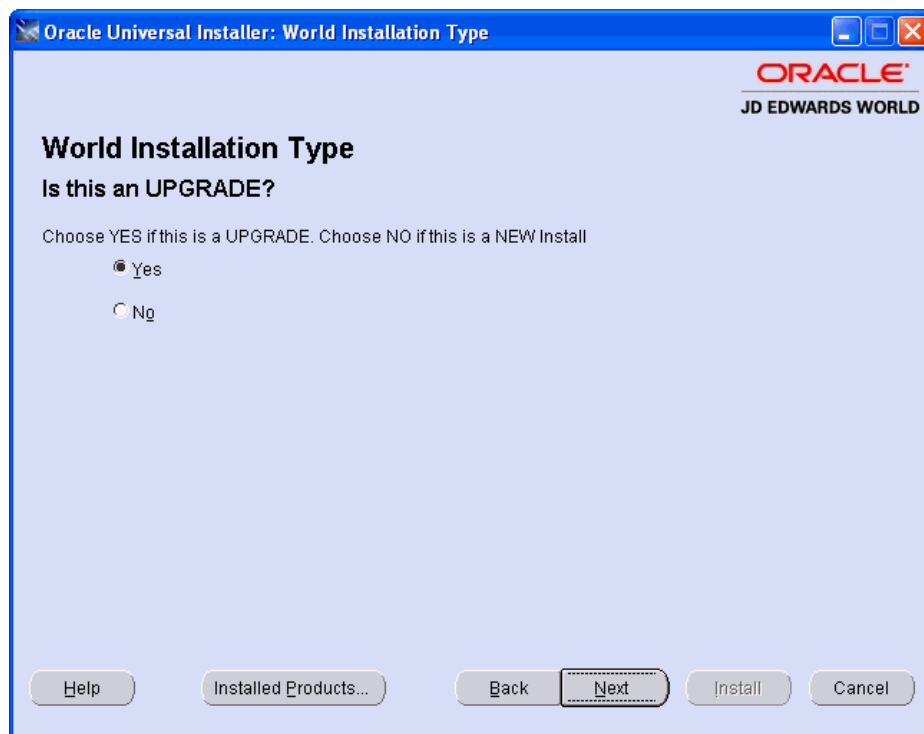
Figure 4-2 Specify Home Details screen



Step 10

The World Installation Type screen displays. Select your installation type radio button and click Next.

Figure 4-3 World Installation Type screen



Step 11

The IBM I Signon Information screen displays. Enter your IBM i Machine Name or IP address, your User Profile with QSECOFR authority and Password. Click Next to continue.

Figure 4–4 IBM i Signon Information screen

Step 12

Enter a new User ID (IBM Profile must exist) to use as the JD Edwards World Security Administrator for A9.4. If you use an existing Security Administrator ID, the job description is changed during the upgrade process and that ID will not be able to access the previous version of the software.

Customers on release A9.3 need to set up a new Security Administrator User ID for A9.4.

Ensure the Secure Administrator User ID has authority to change user profiles.

During the upgrade process, this profile is set up with the needed security authorizations to perform the post upgrade tasks.

Note: When the upgrade process completes, the Initial Program will be set to J98INITA for the Security Administrator User ID.

Figure 4-5 Security Administrator User ID screen



Step 13

Note: This screen will not display if the IBM i JDEINSTAL profile already exists.

The Choose a New Password for the IBM i JDEINSTAL Profile screen displays. If the JDEINSTAL profile does not exist the installation will create it with the password you enter on this screen Click Next to continue.

Figure 4–6 Choose a New Password for the IBM i JDEINSTAL Profile screen

Oracle Universal Installer: Choose a New Password for the IBM i JDEPROD Profile

ORACLE
JD EDWARDS WORLD

Choose a New Password for the IBM i JDEINSTAL Profile
CAUTION: Passwords can be case sensitive.

Please make a note of this new JDEINSTAL password

JDEINSTAL Password

Confirm JDEINSTAL Password

This user profile doesn't exist, the profile will be created with this password.

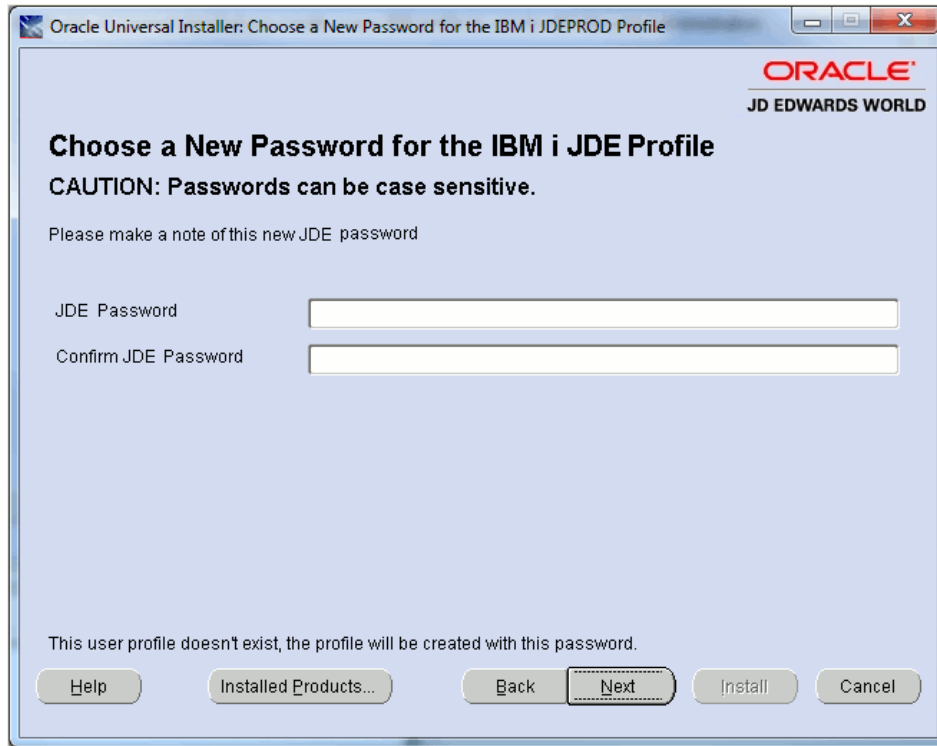
Help Installed Products... Back **Next** Install Cancel

Step 14

Note: This screen will not display if the IBM i JDE profile already exists.

The Choose a New Password for the IBM i JDE Profile screen displays. If the JDE profile does not exist, the installation will create it with the password you enter on this screen. Click Next to continue.

Figure 4-7 Choose a New Password for the IBM i JDE Profile screen



Step 15

Note: This screen will not display if the IBM i JDEPROD profile already exists.

The Choose a New Password for the IBM i JDEPROD Profile screen displays. If the JDEPROD profile does not exist, the installation will create it with the password you enter on this screen. JDEPROD is a sample user profile for your reference. Click Next to continue.

Figure 4–8 Choose a New Password for the IBM i JDEPROD Profile screen

Oracle Universal Installer: Choose a New Password for the IBM i JDEPROD Profile

ORACLE
JD EDWARDS WORLD

Choose a New Password for the IBM i JDEPROD Profile

CAUTION: Passwords can be case sensitive.

Please make a note of this new JDEPROD password

JDEPROD Password

Confirm JDEPROD Password

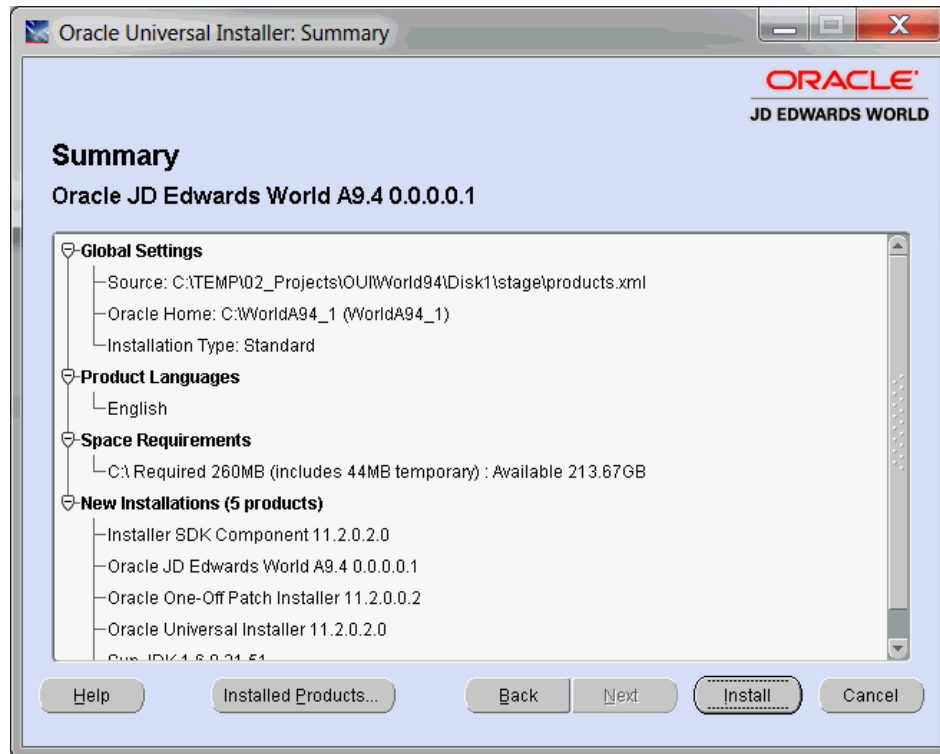
This user profile doesn't exist, the profile will be created with this password.

Help Installed Products... Back **Next** Install Cancel

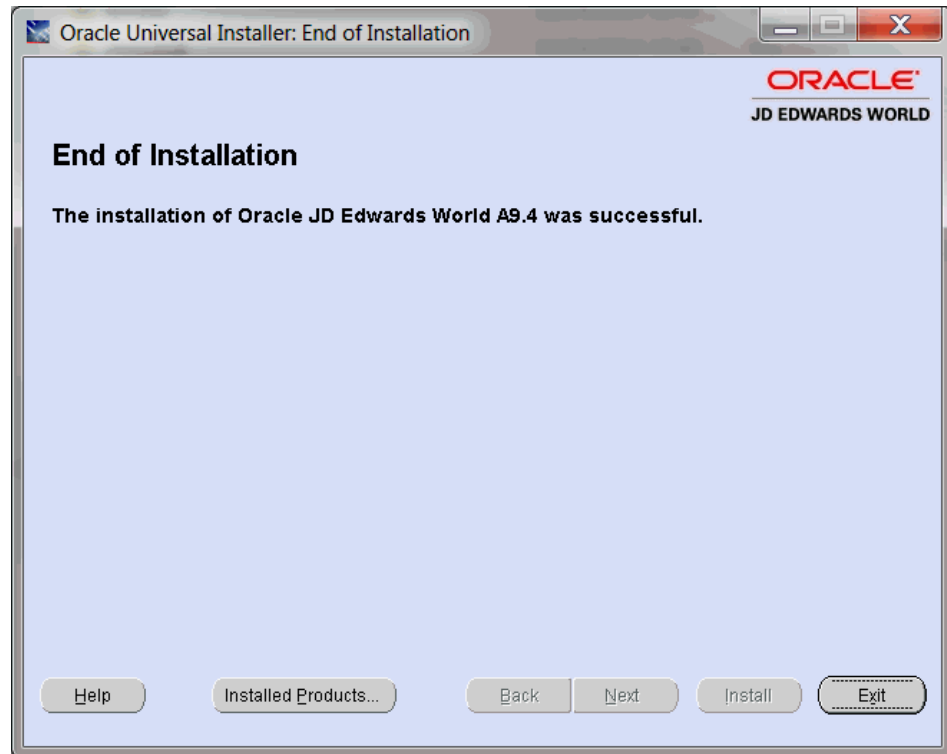
Step 16

The Summary screen displays. Click Install to continue the installation.

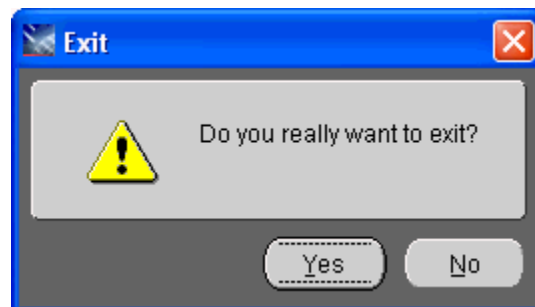
Note: During the OUI Install Process, if an error window appears, continue to select 'retry'. Typically this is due to a failed FTP PUT attempt.

Figure 4–9 Summary screen**Step 17**

When the OUI installation is complete, the End of Installation screen appears. The installation time will vary depending on the speed of your network. Click Exit to continue.

Figure 4–10 End of Installation screen**Step 18**

To verify you want to exit OUI click Yes on the Exit screen.

Figure 4–11 Verify Exit window**Step 19**

The System i portion of the JD Edwards World A9.4 release submits for processing.

You need to monitor the job named WORLDA94 to ensure that it completes successfully.

A WORLDA94 completed normally message will be sent to the User identified in Step 9 above.

If this is an Upgrade, when this job completes, you can log into the JD Edwards World Planner Environment as user JDEINSTAL and proceed to create an upgrade plan. Complete the instructions in the *JD Edwards World Upgrade Guide Version A9.4* document. Available at <http://learnjde.com>

If this is a New Install, the WORLDA94 job will install the JD Edwards World A9.4 Pristine Environment. This database contains examples of common uses of the software product. You are able to log into this environment with the JDE user and the password you supplied.

If you need to set up data libraries for your company after the New Install, use option 2 (Data Libraries) on menu G9645. After the data libraries are created, you must change the QJDF data area starting at position 181 to point to the library containing your F0092 file.

Part 4 – (Optional) Install Electronic Document Delivery

This part contains the topic:

- [Section 5.1, "\(Optional\) Install Electronic Document Delivery."](#)

This optional section covers installing the World Electronic Document Delivery (EDD) folder on your System i Integrated File System (IFS). You only need to do this step if you will use World EDD.

5.1 (Optional) Install Electronic Document Delivery

5.1.1 Installation Steps

1. After running the A94 installation program, restore the EDDIFS SAVF to the System I IFS "root/WORLD_EDD_A94" folder.

```
RST DEV('/QSYS.LIB/JDEINSTAL2.LIB/EDDIFS.FILE')
```

```
OBJ('/WORLD_EDD_A94_BUILD/*' *INCLUDE '/WORLD_EDD_A94')
```

```
SUBTREE(*ALL) OUTPUT(*PRINT) CRTPRNDIR(*YES) ALWOBJDIF(*ALL)
```

2. Set *PUBLIC authority on EDD folder. You will need proper authority to execute the command.

```
CALL PGM(J00EAUTH) PARM('/WORLD_EDD_A94')
```

3. There is one .jar file that needs to be placed in the /WORLD_EDD_A94/lib folder:

```
jt400.jar
```

The /WORLD_EDD_A94/ lib folder is delivered with Read/Execute authority only. You will need to grant write authority to the /WORLD_EDD_A94/lib folder in order to copy the jt400.jar file.

If this file exists in the /lib folder from a previous EDD install, you can simply copy it to the /WORLD_EDD_A94/lib folder. If this is a new install of EDD, you will need to install the required jt400.jar file following the instructions for A9.4 specified in Doc ID 1349790.1 in My Oracle Support at:

<https://support.oracle.com>

Note: If you are upgrading from a previous EDD install, you can copy/replace the xdodelivery.cfg file from your current EDD installation/resource folder to the "WORLD_EDD_A94/resource/" folder. If copying this file from a previous install, you will have to modify the location of the ds-temp-dir as shown:

```
<property name="ds-temp-dir">/World_EDD_
A94/temp</property>
```

4. Use the XDODelivery Maintenance application (4/G00E41) to configure your EDD server parameters and encrypt password fields. Refer to the A9.4 Technical Tools Guide for instructions on how to edit the xdodelivery.cfg file which will encrypt password fields.

Additional Software and Resources

This appendix contains these topics:

- [Section A.1, "JD Edwards World A9.4,"](#)
- [Section A.2, "Oracle Business Intelligence Publisher \(BI Publisher\)."](#)

A.1 JD Edwards World A9.4

JD Edwards World A9.4 Application Documentation, Web Enablement and Service Enablement information are available at

<http://www.oracle.com/technetwork/documentation/jdedworld-364455.html>

A.2 Oracle Business Intelligence Publisher (BI Publisher)

Oracle Business Intelligence Publisher (BI Publisher) is included with JD Edwards World licensed software.

Product/Component included with license and order

Restricted Use: Business Intelligence Publisher to publish and/ or view.

1. Shipped BI Publisher reports. Layout changes are allowed. And
2. Shipped or newly created BI Publisher reports that are modified to access data from the existing JD Edwards World Applications schema that has not been customized.

Products to be licensed separately (prerequisites)

Full use: Business Intelligence Publisher is required if any shipped, modified or newly created Business Intelligence Publisher report:

1. Accesses data from a non-JD Edwards World Applications data Source.
Or
2. Accesses data from a new schema within the JD Edwards World Applications that is not shipped by Oracle.
Or
3. Accesses data from a modified JD Edwards World Applications schema (e.g. by adding columns to an existing table).

Media Differences

This appendix contains these topics:

- [Section B.1, "Oracle Software Delivery Cloud,"](#)
- [Section B.2, "DVD Based Product Delivery."](#)

B.1 Oracle Software Delivery Cloud

Oracle's Software Delivery Cloud electronic product delivery web site provides the JD Edwards World A9.4 product in a downloadable form. It provides all of the software and tools necessary to perform a New Install or Upgrade for A9.4. (It is exactly the same product provided on DVD except it is delivered in an IBM *SAVF file format.)

B.2 DVD Based Product Delivery

DVD disk is an efficient method for installing the JD Edwards World A9.4 product. It provides all of the software and tools necessary to perform a New Install or Upgrade for A9.4. This media format also serves as a permanent backup of your delivered product and can be easily archived or sent to your offsite backup facility.

The DVD image provided is a standard Windows PC DVD.

Map a Network Drive to the Root IFS Directory

This appendix contains the topic:

- [Section C.1, "Map a Network Drive on Your Windows PC."](#)

C.1 Map a Network Drive on Your Windows PC

1. In Windows Explorer, choose Map Network Drive from the Tools menu.
2. Enter or choose a letter in Drive field.

In the following example, the letter Q is the Drive letter.

3. Enter the directory path for the IFS directory in the Folder field and press Finish.

Note: Use back slashes in Windows. In the following example, you can replace <System i> with the network machine name or IP Address of your AS/400, System i or System i server.

\\<System i>\

You might need to share any directory that you specify in the directory path. You typically do not need to specify the Root directory in the directory path when mapping to a shared folder.

4. The system might prompt you to enter your System i User ID and password. When doing so, you might need to enter the network Domain or IP address where the System i resides to qualify the User ID. Enter the password in lowercase.

D

Download Tips

If you are using Oracle's Software Delivery Cloud electronic product delivery web site, you must:

- Use a Windows workstation with at least a 1 GHz processor, 1GB of memory and 8 GB of free disk space.
- You might need to double the size of the download files as open space on your Windows workstation hard drive.
- Do not run other Windows programs while downloading.
- Consider running the downloads after normal business hours, or when network traffic is low.
- Run the installation from a local workstation or server.
- If your Windows workstation or server also has a wireless network connection, disable the wireless connection before starting a download.
- Set your network card to maximum speed, such as 100mb/full, unless you are on a cable modem connection, in which case you must leave the network connection speed set to Auto.

