

Netra Modular System Plugin User's Guide

for Oracle Fabric Manager

ORACLE

Part No: E59322-01
December 2016

Part No: E59322-01

Copyright © 2016, Oracle and/or its affiliates. All rights reserved.

This software and related documentation are provided under a license agreement containing restrictions on use and disclosure and are protected by intellectual property laws. Except as expressly permitted in your license agreement or allowed by law, you may not use, copy, reproduce, translate, broadcast, modify, license, transmit, distribute, exhibit, perform, publish, or display any part, in any form, or by any means. Reverse engineering, disassembly, or decompilation of this software, unless required by law for interoperability, is prohibited.

The information contained herein is subject to change without notice and is not warranted to be error-free. If you find any errors, please report them to us in writing.

If this is software or related documentation that is delivered to the U.S. Government or anyone licensing it on behalf of the U.S. Government, then the following notice is applicable:

U.S. GOVERNMENT END USERS. Oracle programs, including any operating system, integrated software, any programs installed on the hardware, and/or documentation, delivered to U.S. Government end users are "commercial computer software" pursuant to the applicable Federal Acquisition Regulation and agency-specific supplemental regulations. As such, use, duplication, disclosure, modification, and adaptation of the programs, including any operating system, integrated software, any programs installed on the hardware, and/or documentation, shall be subject to license terms and license restrictions applicable to the programs. No other rights are granted to the U.S. Government.

This software or hardware is developed for general use in a variety of information management applications. It is not developed or intended for use in any inherently dangerous applications, including applications that may create a risk of personal injury. If you use this software or hardware in dangerous applications, then you shall be responsible to take all appropriate fail-safe, backup, redundancy, and other measures to ensure its safe use. Oracle Corporation and its affiliates disclaim any liability for any damages caused by use of this software or hardware in dangerous applications.

Oracle and Java are registered trademarks of Oracle and/or its affiliates. Other names may be trademarks of their respective owners.

Intel and Intel Xeon are trademarks or registered trademarks of Intel Corporation. All SPARC trademarks are used under license and are trademarks or registered trademarks of SPARC International, Inc. AMD, Opteron, the AMD logo, and the AMD Opteron logo are trademarks or registered trademarks of Advanced Micro Devices. UNIX is a registered trademark of The Open Group.

This software or hardware and documentation may provide access to or information about content, products, and services from third parties. Oracle Corporation and its affiliates are not responsible for and expressly disclaim all warranties of any kind with respect to third-party content, products, and services unless otherwise set forth in an applicable agreement between you and Oracle. Oracle Corporation and its affiliates will not be responsible for any loss, costs, or damages incurred due to your access to or use of third-party content, products, or services, except as set forth in an applicable agreement between you and Oracle.

Documentation Accessibility

For information about Oracle's commitment to accessibility, visit the Oracle Accessibility Program website at <http://www.oracle.com/pls/topic/lookup?ctx=acc&id=docacc>.

Access to Oracle Support

Oracle customers that have purchased support have access to electronic support through My Oracle Support. For information, visit <http://www.oracle.com/pls/topic/lookup?ctx=acc&id=info> or visit <http://www.oracle.com/pls/topic/lookup?ctx=acc&id=trs> if you are hearing impaired.

Référence: E59322-01

Copyright © 2016, Oracle et/ou ses affiliés. Tous droits réservés.

Ce logiciel et la documentation qui l'accompagne sont protégés par les lois sur la propriété intellectuelle. Ils sont concédés sous licence et soumis à des restrictions d'utilisation et de divulgation. Sauf stipulation expresse de votre contrat de licence ou de la loi, vous ne pouvez pas copier, reproduire, traduire, diffuser, modifier, accorder de licence, transmettre, distribuer, exposer, exécuter, publier ou afficher le logiciel, même partiellement, sous quelque forme et par quelque procédé que ce soit. Par ailleurs, il est interdit de procéder à toute ingénierie inverse du logiciel, de le désassembler ou de le décompiler, excepté à des fins d'interopérabilité avec des logiciels tiers ou tel que prescrit par la loi.

Les informations fournies dans ce document sont susceptibles de modification sans préavis. Par ailleurs, Oracle Corporation ne garantit pas qu'elles soient exemptes d'erreurs et vous invite, le cas échéant, à lui en faire part par écrit.

Si ce logiciel, ou la documentation qui l'accompagne, est livré sous licence au Gouvernement des Etats-Unis, ou à quiconque qui aurait souscrit la licence de ce logiciel pour le compte du Gouvernement des Etats-Unis, la notice suivante s'applique:

U.S. GOVERNMENT END USERS. Oracle programs, including any operating system, integrated software, any programs installed on the hardware, and/or documentation, delivered to U.S. Government end users are "commercial computer software" pursuant to the applicable Federal Acquisition Regulation and agency-specific supplemental regulations. As such, use, duplication, disclosure, modification, and adaptation of the programs, including any operating system, integrated software, any programs installed on the hardware, and/or documentation, shall be subject to license terms and license restrictions applicable to the programs. No other rights are granted to the U.S. Government.

Ce logiciel ou matériel a été développé pour un usage général dans le cadre d'applications de gestion des informations. Ce logiciel ou matériel n'est pas conçu ni n'est destiné à être utilisé dans des applications à risque, notamment dans des applications pouvant causer des dommages corporels. Si vous utilisez ce logiciel ou matériel dans le cadre d'applications dangereuses, il est de votre responsabilité de prendre toutes les mesures de secours, de sauvegarde, de redondance et autres mesures nécessaires à son utilisation dans des conditions optimales de sécurité. Oracle Corporation et ses affiliés déclinent toute responsabilité quant aux dommages causés par l'utilisation de ce logiciel ou matériel pour ce type d'applications.

Oracle et Java sont des marques déposées d'Oracle Corporation et/ou de ses affiliés. Tout autre nom mentionné peut correspondre à des marques appartenant à d'autres propriétaires qu'Oracle.

Intel et Intel Xeon sont des marques ou des marques déposées d'Intel Corporation. Toutes les marques SPARC sont utilisées sous licence et sont des marques ou des marques déposées de SPARC International, Inc. AMD, Opteron, le logo AMD et le logo AMD Opteron sont des marques ou des marques déposées d'Advanced Micro Devices. UNIX est une marque déposée d'The Open Group.

Ce logiciel ou matériel et la documentation qui l'accompagne peuvent fournir des informations ou des liens donnant accès à des contenus, des produits et des services émanant de tiers. Oracle Corporation et ses affiliés déclinent toute responsabilité ou garantie expresse quant aux contenus, produits ou services émanant de tiers, sauf mention contraire stipulée dans un contrat entre vous et Oracle. En aucun cas, Oracle Corporation et ses affiliés ne sauraient être tenus pour responsables des pertes subies, des coûts occasionnés ou des dommages causés par l'accès à des contenus, produits ou services tiers, ou à leur utilisation, sauf mention contraire stipulée dans un contrat entre vous et Oracle.

Accessibilité de la documentation

Pour plus d'informations sur l'engagement d'Oracle pour l'accessibilité à la documentation, visitez le site Web Oracle Accessibility Program, à l'adresse <http://www.oracle.com/pls/topic/lookup?ctx=acc&id=docacc>.

Accès aux services de support Oracle

Les clients Oracle qui ont souscrit un contrat de support ont accès au support électronique via My Oracle Support. Pour plus d'informations, visitez le site <http://www.oracle.com/pls/topic/lookup?ctx=acc&id=info> ou le site <http://www.oracle.com/pls/topic/lookup?ctx=acc&id=trs> si vous êtes malentendant.

Contents

Using This Documentation	7
Product Documentation Library	7
Feedback	7
Installing and Removing the Software	9
Understanding the Netra Modular System Plugin	9
Plugin Overview	10
System Requirements	10
Installing and Updating the Software	11
▼ Prepare for Installation	11
▼ Download the Software	12
▼ Install the Software	13
▼ Check the Software Version	14
▼ Update the Software	14
▼ Remove the Software	15
Starting and Stopping the Software	17
▼ Start the Software	17
▼ Restart the Software	17
▼ Stop the Software	18
▼ Display the Software Status	18
Managing Configurations	21
Managing Frame Configurations	21
▼ Add a Frame Manager	21
▼ Remove a Frame Manager	22
▼ Modify User Name and Password	23
Managing Nodes	24
▼ Power On a Node	24
▼ Power Off a Node	25

Displaying Information	27
Main Screens Overview	27
Displaying Dashboards	29
▼ View Frame Managers	30
▼ View Frames	30
▼ Display a Rack's View	31
Displaying Details	32
▼ View Frame Details	32
▼ View Rack Components	34
▼ View Slot Assignments	34
▼ View and Edit Alarm and Hot Swap Policies for a Slot	35
▼ View Switches	36
▼ View Switch Point to Point Connections	36
▼ View Servers (Nodes)	37
▼ View Optical Patch Panels	38
▼ View FMM Part Numbers	38
▼ View FMM Serial Numbers	39
▼ View Server (Node) Serial Numbers	40
▼ View Switch Serial Numbers	40
Displaying Job and Status Summaries	41
▼ View Recent Jobs Summary	41
▼ View Frame Manager Status	42
▼ View Switch Status	42
▼ View Node Status	43
▼ View FMM Status	44
▼ Display the System Log	44
▼ View Plugin Status and Version	45
 Index	 47

Using This Documentation

- **Overview** – Describes how to install, update, and configure the Oracle Fabric Manager plugin to manage Oracle's Netra Modular System and installed components.
- **Audience** – Technicians, system administrators, and authorized service providers.
- **Required Knowledge** – Advanced experience with similar hardware. Training on the hazards within the equipment and how to remove and replace the hardware.

Product Documentation Library

Documentation and resources for this product and related products are available at <http://www.oracle.com/goto/netra-modular-system/docs>.

Feedback

Provide feedback about this documentation at <http://www.oracle.com/goto/docfeedback>.

Installing and Removing the Software

These topics provide instructions for installing, and removing the software.

- [“Understanding the Netra Modular System Plugin” on page 9](#)
- [“Installing and Updating the Software” on page 11](#)
- [“Remove the Software” on page 15](#)

Related Information

- [“Starting and Stopping the Software” on page 17](#)
- [“Managing Configurations” on page 21](#)
- [“Displaying Information” on page 27](#)
- [“Managing Plugins” in *Oracle Fabric Manager 5.0.2 Administration Guide*](#)

Understanding the Netra Modular System Plugin

- [“Plugin Overview” on page 10](#)
- [“System Requirements” on page 10](#)

Related Information

- [“Installing and Updating the Software” on page 11](#)
- [“Remove the Software” on page 15](#)
- [“Starting and Stopping the Software” on page 17](#)
- [“Managing Configurations” on page 21](#)
- [“Displaying Information” on page 27](#)
- [“Using the Interface” in *Oracle Fabric Manager 5.0.2 Administration Guide*](#)
- [“Managing Plugins” in *Oracle Fabric Manager 5.0.2 Administration Guide*](#)

Plugin Overview

The plugin is software that runs on the Oracle Fabric Manager application suite. Oracle Fabric Manager supports multiple platforms through platform-specific plugins. You must purchase and install Oracle Fabric Manager to use the Netra Modular System plugin.

The plugin provides a Graphical User Interface (GUI) for performing system administration tasks: fault management, hotswap control, alarm control, node power control, and server firmware upgrades.

For the Netra Modular System, the Oracle Fabric Manager framework is hosted on the Frame System Agent (FSA), which also runs the management stack. The Oracle Fabric Manager framework with the Netra Modular System plugin installed becomes the client of the FSA management stack. The plugin communicates with the stack via Java Management Extension (JMX).

The modular system plugin is included in the Netra Modular System software release package and provides the following:

- frame view, providing status summary of the frames
- frame detail status

Related Information

- [“System Requirements” on page 10](#)
- [“Installing and Updating the Software” on page 11](#)
- [“Remove the Software” on page 15](#)
- [“Starting and Stopping the Software” on page 17](#)
- [“Managing Configurations” on page 21](#)
- [“Displaying Information” on page 27](#)
- [“Using the Interface” in *Oracle Fabric Manager 5.0.2 Administration Guide*](#)
- [“Managing Plugins” in *Oracle Fabric Manager 5.0.2 Administration Guide*](#)

System Requirements

Currently, the system management software is supported only on Oracle Linux.

- For Netra Modular System requirements, see [Netra Modular System Product Notes](#).

- For Oracle Fabric Manager requirements, see [Oracle Fabric Manager 5.0.3 Release Notes](#) .

Related Information

- “Plugin Overview” on page 10
- “Installing and Updating the Software” on page 11
- “Remove the Software” on page 15
- “Starting and Stopping the Software” on page 17
- “Managing Configurations” on page 21
- “Displaying Information” on page 27
- “Using the Interface” in [Oracle Fabric Manager 5.0.2 Administration Guide](#)
- “Managing Plugins” in [Oracle Fabric Manager 5.0.2 Administration Guide](#)

Installing and Updating the Software

- “Prepare for Installation” on page 11
- “Download the Software” on page 12
- “Install the Software” on page 13
- “Check the Software Version” on page 14
- “Update the Software” on page 14

Related Information

- “Plugin Overview” on page 10
- “System Requirements” on page 10
- “Managing Plugins” in [Oracle Fabric Manager 5.0.2 Administration Guide](#)

▼ Prepare for Installation

Prepare the following resources prior to installing the system management software:

1. **Identify the topology of your network.**
2. **Download the software.**
See [“Download the Software” on page 12](#).

Related Information

- [“Plugin Overview” on page 10](#)
- [“System Requirements” on page 10](#)
- [“Using the Interface” in *Oracle Fabric Manager 5.0.2 Administration Guide*](#)
- [“Managing Plugins” in *Oracle Fabric Manager 5.0.2 Administration Guide*](#)

▼ Download the Software

The software is delivered in separate compressed packages containing .rpm files. One package contains the Oracle Fabric Manager software suite, and the other package contains the Netra Modular System plugin.

Note - This installation procedure assumes a new installation. If you are upgrading from an earlier version, see [“Update the Software” on page 14](#).

1. **Download the newest Oracle Fabric Manager and Netra Modular System packages.**

Note - To use the plugin, you must have or obtain a licensed 5.0 or newer version of Oracle Fabric Manager.

Download the software from My Oracle Support at <https://support.oracle.com>.

Refer to the [Oracle Fabric Manager 5.0.3 Release Notes](#) and the [Netra Modular System Product Notes](#) for detailed instructions.

2. **On the management nodes, place the packages in a directory where you have root permission.**
3. **On the management nodes where the software will be installed, configure all available interfaces with a valid IP address before installing the software.**
4. **Boot the management host OS completely prior to installing the software.**
5. **Install the software packages.**
See [“Install the Software” on page 13](#).

Related Information

- [“Plugin Overview” on page 10](#)
- [“System Requirements” on page 10](#)

- [“Starting and Stopping the Software” on page 17](#)

▼ Install the Software

1. **Log in as `root` to the FSA that hosts the Oracle Fabric Manager software and the Netra Modular System plugin.**
2. **From the download directory, install both packages by using the `.rpm` command, starting with the Oracle Fabric Manager package.**

See [“Installing or Upgrading the Software” in *Oracle Fabric Manager 5.0.2 Installation Guide*](#).

For example, to install:

```
rpm -i xsigno-xms-5.0.0_OFM-1.noarch.rpm
```

```
rpm -i xsigno-xms-nms-1.0.0_NMS-1.noarch.rpm
```

For example, to update existing versions:

```
rpm -U xsigno-xms-5.0.0_OFM-1.noarch.rpm
```

```
rpm -U xsigno-xms-nms-1.0.0_NMS-1.noarch.rpm
```

where `xsigno-xms-5.0.0_OFM-1.noarch` and `xsigno-xms-nms-1.0.0_NMS-1.noarch` are the names of the newest package releases you downloaded.

3. **Verify the installation was successful:**

```
rpm -qa | grep xsigno
```
4. **From the Oracle Fabric Manager interface or CLI, add the Netra Modular System plugin.**

See [“Managing Plugins” in *Oracle Fabric Manager 5.0.2 Administration Guide*](#) or [“Adding Plugins” in *Oracle Fabric Manager 5.0.0 Command Reference*](#).
5. **Validate that the Cacao software is installed and the environment is set up.**

Cacao Framework version 2.4.7.0 or newer is required and included in the modular system `.rpm` package. Configure the environment by following the instructions in the README file.

Related Information

- [“Plugin Overview” on page 10](#)

- [“System Requirements” on page 10](#)
- [“Starting and Stopping the Software” on page 17](#)
- [“Managing Configurations” on page 21](#)

▼ Check the Software Version

1. **Log in as root to the FSA that hosts the Oracle Fabric Manager application.**
2. **Use the following commands to check the versions.**

```
rpm -qa --info xsigo-xms
```

```
rpm -qa --info xsigo-xms-nms
```

3. **If there are patches and other updates, install them.**
See [“Update the Software” on page 14](#).

Related Information

- [“System Requirements” on page 10](#)
- [“Starting and Stopping the Software” on page 17](#)
- [“Installing and Updating the Software” on page 11](#)
- [“Managing Configurations” on page 21](#)

▼ Update the Software

You can update the Netra Modular System plugin and the Oracle Fabric Manager software independently. Check the product notes and release notes for compatibility of packages before updating either.

Note - If you have an earlier version of the software installed, perform this procedure to update it. This procedure is not required for first-time installations.

1. **Check the software version.**
See [“Check the Software Version” on page 14](#).
2. **(Optional) Uninstall the older version of the software.**
See [“Remove the Software” on page 15](#).
3. **Download the newest software updates.**

See [“Download the Software”](#) on page 12.

4. Install the software.

See [“Install the Software”](#) on page 13.

5. Check the software version.

See [“Check the Software Version”](#) on page 14.

Related Information

- [“System Requirements”](#) on page 10
- [“Starting and Stopping the Software”](#) on page 17
- [“Managing Configurations”](#) on page 21
- [“Managing Plugins”](#) in *Oracle Fabric Manager 5.0.2 Administration Guide*

▼ Remove the Software

This procedure completely removes the software.

- 1. If you want to save your software configuration, back it up.**
- 2. Stop the management node in which the package is installed.**
- 3. On the FSA that hosts the Oracle Fabric Manager software, remove the instance associated with the management node in which the package is installed.**
- 4. Log in to the VM as root user where the software is installed.**
- 5. Using the Oracle Fabric Manager interface, remove the Netra Modular System plugin.**
See [“Delete Plugins”](#) in *Oracle Fabric Manager 5.0.2 Administration Guide*.
- 6. Uninstall the Oracle Fabric Manager software.**
See [“Uninstalling the Software”](#) in *Oracle Fabric Manager 5.0.2 Installation Guide*.
- 7. Remove the packages using the following commands.**

```
rpm -e xsigno-xms
```

```
rpm -e xsigno-xms-nms
```

where *xsigo-xms* and *xsigo-xms-nms* are the specific package names you want to remove.

Related Information

- [“Starting and Stopping the Software” on page 17](#)
- [“Managing Configurations” on page 21](#)
- [“Managing Plugins” in *Oracle Fabric Manager 5.0.2 Administration Guide*](#)

Starting and Stopping the Software

These topics describe how to stop and start the software.

- [“Start the Software” on page 17](#)
- [“Restart the Software” on page 17](#)
- [“Stop the Software” on page 18](#)
- [“Display the Software Status” on page 18](#)

Related Information

- [“Managing Configurations” on page 21](#)
- [“Displaying Information” on page 27](#)
- [“Installing and Removing the Software” on page 9](#)
- [“Using the Interface” in *Oracle Fabric Manager 5.0.2 Administration Guide*](#)
- [“Managing Plugins” in *Oracle Fabric Manager 5.0.2 Administration Guide*](#)

▼ Start the Software

1. **Log in as root to the FSA that hosts the Oracle Fabric Manager software and the Netra Modular System plug-in.**
2. **Enter the `service xms start` command.**

Related Information

- [“Add Plugins” in *Oracle Fabric Manager 5.0.2 Administration Guide*](#)
- [“Restart the Software” on page 17](#)
- [“Stop the Software” on page 18](#)
- [“Display the Software Status” on page 18](#)

▼ Restart the Software

This procedure restarts the Oracle Fabric Manager software.

1. **Log in as root to the FSA that hosts the Oracle Fabric Manager software and the Netra Modular System plug-in.**
2. **Enter the service `xms restart` command.**

Related Information

- [“Start the Software” on page 17](#)
- [“Stop the Software” on page 18](#)
- [“Display the Software Status” on page 18](#)
- [“Managing Configurations” on page 21](#)
- [“Displaying Information” on page 27](#)
- [“Installing and Removing the Software” on page 9](#)

▼ **Stop the Software**

1. **Log in as root to the FSA that hosts the Oracle Fabric Manager software and the Netra Modular System plug-in.**
2. **Enter the service `xms stop` command.**

Related Information

- [“Start the Software” on page 17](#)
- [“Restart the Software” on page 17](#)
- [“Display the Software Status” on page 18](#)
- [“Installing and Removing the Software” on page 9](#)

▼ **Display the Software Status**

1. **Log in as root to the FSA that hosts the Oracle Fabric Manager software and the Netra Modular System plug-in.**
2. **Enter the service `xms status` command.**

Related Information

- [“Start the Software” on page 17](#)
- [“Restart the Software” on page 17](#)
- [“Stop the Software” on page 18](#)
- [“Managing Configurations” on page 21](#)

- [“Displaying Information” on page 27](#)
- [“Installing and Removing the Software” on page 9](#)

Managing Configurations

These topics describe how to perform system administration.

- [“Managing Frame Configurations” on page 21](#)
- [“Managing Nodes” on page 24](#)

Related Information

- [“Displaying Information” on page 27](#)
- [“Installing and Removing the Software” on page 9](#)
- [“Starting and Stopping the Software” on page 17](#)
- [“Using the Interface” in *Oracle Fabric Manager 5.0.2 Administration Guide*](#)
- [“Managing Plugins” in *Oracle Fabric Manager 5.0.2 Administration Guide*](#)

Managing Frame Configurations

- [“Add a Frame Manager” on page 21](#)
- [“Remove a Frame Manager” on page 22](#)
- [“Modify User Name and Password” on page 23](#)

Related Information

- [“Managing Nodes” on page 24](#)
- [“Displaying Information” on page 27](#)

▼ Add a Frame Manager

1. **At the Navigation menu, under Netra Modular System Services, click Frame Managers.**
The panel displayed on the right populates with the Netra Modular System Frame Managers summary.

2. Click the Plus icon.

See [“Using the Interface” in Oracle Fabric Manager 5.0.2 Administration Guide](#) for icon descriptions.

3. Type the frame manager name, user name, password, and description in the dialog box.

Note - The Netra Modular System software uses the following information to connect to the Cacao software.

Field	Description
Host Name	Enter the DNS host name or IP address of the frame manager.
User Name	Enter the user name.
Password	Enter the password.
Description	Enter a short description of the frame manager. This will display under Description (far right) of the frame manager entry.

4. Review the entries for accuracy, then click Submit.

When you click Submit, the plug-in connects to the Netra Modular System management stack, based on frame manager information. If the connection is successful, three entries appear in the left pane navigation, under Netra Modular System Services Plugin: Frame Managers, Frame Details, and Rack View. When completed, you can view the new frame manager in the list under Netra Modular System Frame Managers summary.

Related Information

- [“View Frame Managers” on page 30](#)
- [“Remove a Frame Manager” on page 22](#)
- [“Modify User Name and Password” on page 23](#)
- [“Managing Nodes” on page 24](#)
- [“Displaying Information” on page 27](#)

▼ Remove a Frame Manager**1. At the Navigation menu, under Netra Modular System Services, click Frame Managers.**

The panel displayed on the right populates with the Netra Modular System Frame Managers summary.

2. Highlight the entry that you want to delete.

3. Click the Trash icon.

See [“Using the Interface”](#) in *Oracle Fabric Manager 5.0.2 Administration Guide* for icon descriptions.

A confirmation message is displayed asking if you want to delete the entry.

4. Click Yes.

5. Review the entries for accuracy, then click Submit.

The frame manager is deleted from the list under Netra Modular System Frame Managers summary.

Related Information

- [“View Frame Managers”](#) on page 30
- [“Add a Frame Manager”](#) on page 21
- [“Modify User Name and Password”](#) on page 23
- [“Managing Nodes”](#) on page 24
- [“Displaying Information”](#) on page 27

▼ Modify User Name and Password

1. At the Navigation menu, under Netra Modular System Services, click Frame Managers.

The panel displayed on the right populates with the Netra Modular System Frame Managers summary.

2. Select the frame manager entry for which you want to change the user name and/or password.

3. Under the General tab of Netra Modular System Frame Manager panel, click the Edit button.

Both the User Name and Password fields become editable.

4. Change the User Name and/or Password, then click Submit.



Caution - Enter the password accurately. There is no confirmation or double entry of the password to verify it.

Related Information

- [“View Frame Managers”](#) on page 30

- [“Add a Frame Manager” on page 21](#)
- [“Remove a Frame Manager” on page 22](#)
- [“Managing Nodes” on page 24](#)
- [“Displaying Information” on page 27](#)

Managing Nodes

- [“Power On a Node” on page 24](#)
- [“Power Off a Node” on page 25](#)

Related Information

- [“View Servers \(Nodes\)” on page 37](#)
- [“View Slot Assignments” on page 34](#)
- [“Display a Rack's View” on page 31](#)
- [“Displaying Information” on page 27](#)

▼ Power On a Node

1. **At the Navigation menu, under Netra Modular System Services, click Frame Details.**

The panel displayed on the right populates with the Netra Modular System Frame Detail panel.

2. **From the list of frame managers, click an entry.**

The details of the frame manager are displayed in the panel, located below the Netra Modular System Frame Detail panel.

3. **Click the Servers tab.**

A list of the servers (nodes) is displayed.

4. **Select the node that you want to power on.**

5. **Click the green arrow icon to power on the node.**

The node is powered on.

Related Information

- [“Power Off a Node” on page 25](#)

- [“View Servers \(Nodes\)” on page 37](#)
- [“View Slot Assignments” on page 34](#)
- [“Display a Rack's View” on page 31](#)
- [“Displaying Information” on page 27](#)

▼ Power Off a Node

1. **At the Navigation menu, under Netra Modular System Services, click Frame Details.**

The panel displayed on the right populates with the Netra Modular System Frame Detail panel.

2. **From the list of frame managers, click an entry.**

The details of the frame manager are displayed in the panel, located below the Netra Modular System Frame Detail panel.

3. **Click the Servers tab.**

A list of the servers (nodes) is displayed.

4. **Select the node that you want to power off.**

5. **Click the red arrow icon to power off the node.**

The node is powered on.

Related Information

- [“Power On a Node” on page 24](#)
- [“View Servers \(Nodes\)” on page 37](#)
- [“View Slot Assignments” on page 34](#)
- [“Display a Rack's View” on page 31](#)
- [“Displaying Information” on page 27](#)
- [“Using the Interface” in *Oracle Fabric Manager 5.0.2 Administration Guide*](#)

Displaying Information

These topics describe how to view status, system, component, nodes, and other information.

- [“Main Screens Overview” on page 27](#)
- [“Displaying Dashboards” on page 29](#)
- [“Displaying Details” on page 32](#)
- [“Displaying Job and Status Summaries” on page 41](#)
- [“Display the System Log” on page 44](#)
- [“View Plugin Status and Version” on page 45](#)

Related Information

- [“Managing Configurations” on page 21](#)
- [“Starting and Stopping the Software” on page 17](#)
- [“Using the Interface” in *Oracle Fabric Manager 5.0.2 Administration Guide*](#)
- [“Managing Plugins” in *Oracle Fabric Manager 5.0.2 Administration Guide*](#)

Main Screens Overview

From the main Netra Modular System plugin navigation bar, you can access modular system information from the following three main screens.

Main Screens Overview

ORACLE Fabric Manager

Alarms: 0 0 0 0 0 | HA: disabled | User: root (administrator) | Domain: default | Logout | About

Navigation

- General
 - Dashboard
 - Alarms
 - Job Status
- Security Manager
 - Resource Domains
 - User Roles
 - Group Mapping
- Managed Devices
 - Discovery Devices
- Netra Modular System Services
 - Frame Managers
 - Frame Details
 - Rack View
- Plugins
 - Plugin Manager
 - SDN Virtual Network Services

Netra Modular System Frames

Host	Rack#	Rack Type	Status	Availability	Caption	Manufacturer	Part#
10.10.176.81	0	Telco	OK	Running/Full Power	FMM	Oracle Corporation	7082392
nsn175-105	0	Telco	OK	Running/Full Power	FMM	Oracle Corporation	7082392
10.10.176.81	2	Telco	OK	Running/Full Power	FMM	Oracle Corporation	7082392

3 items

Detail

Select a single item to view details

Recent Jobs Summary

Time Updated	Job ID	State	User Name	Job Detail
5 items				

ORACLE Fabric Manager

Alarms: 0 0 0 0 0 | HA: disabled | User: root (administrator) | Domain: default | Logout | About

Navigation

- General
 - Dashboard
 - Alarms
 - Job Status
- Security Manager
 - Resource Domains
 - User Roles
 - Group Mapping
- Managed Devices
 - Discovery Devices
- Netra Modular System Services
 - Frame Managers
 - Frame Details
 - Rack View
- Plugins
 - Plugin Manager
 - SDN Virtual Network Services

Netra Modular System Frames

Host	Rack#	Rack Type	Status	Availability	Caption	Manufacturer	Part#
10.10.176.81	0	Telco	OK	Running/Full Power	FMM	Oracle Corporation	7082392
nsn175-105	0	Telco	OK	Running/Full Power	FMM	Oracle Corporation	7082392
10.10.176.81	2	Telco	OK	Running/Full Power	FMM	Oracle Corporation	7082392

3 items

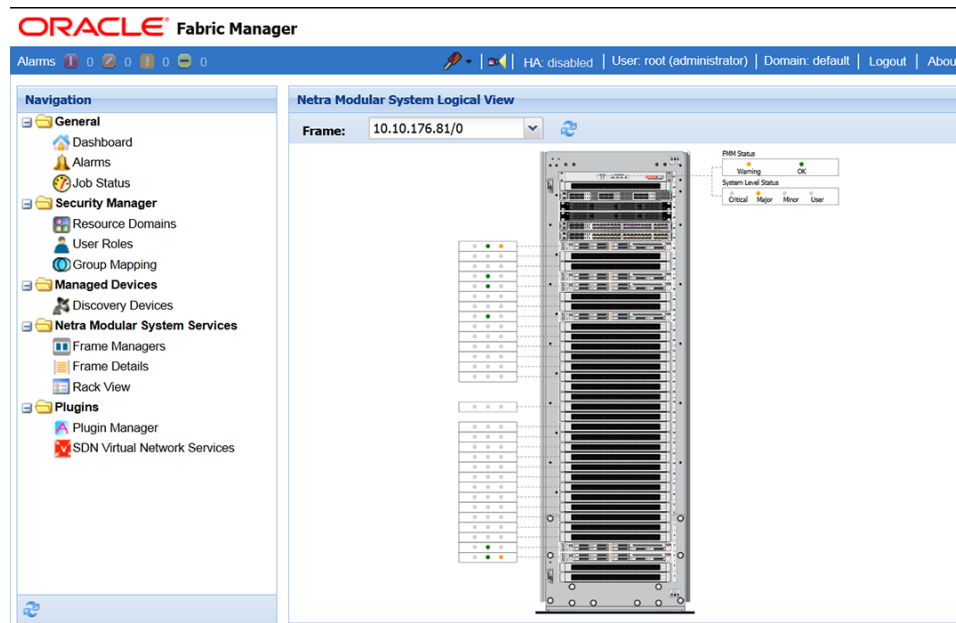
Netra Modular System Frame Detail

General | Slots | Switches | Servers | Optical Patch Panel

Host Name:	10.10.176.81	Rack Number:	2
Frame Manager Number:	2	Rack Type:	Telco
Status:	OK	Availability:	Running/Full Power
Caption:	FMM	Manufacturer:	Oracle Corporation
Part Number:	7082392	Alarm Status:	1
		Serial Number:	489089M+1445CK001T

Recent Jobs Summary

Time Updated	Job ID	State	User Name	Job Detail
5 items				



Related Information

- [“Managing Configurations” on page 21](#)
- [“Starting and Stopping the Software” on page 17](#)
- [“Using the Interface” in Oracle Fabric Manager 5.0.2 Administration Guide](#)
- [“Managing Plugins” in Oracle Fabric Manager 5.0.2 Administration Guide](#)

Displaying Dashboards

- [“View Frame Managers” on page 30](#)
- [“View Frames” on page 30](#)
- [“Display a Rack’s View” on page 31](#)

Related Information

- [“Main Screens Overview” on page 27](#)
- [“Displaying Details” on page 32](#)
- [“Displaying Job and Status Summaries” on page 41](#)

- [“Display the System Log” on page 44](#)
- [“View Plugin Status and Version” on page 45](#)

▼ View Frame Managers

1. **At the Navigation menu, under Netra Modular System Services, click Frame Managers.**

The panel displayed on the right populates with the Netra Modular System Frame Managers summary.

2. **From the list of frame managers, click an entry to view a summary for that frame manager.**

The details of the frame manager are displayed in the panel, located below the Netra Modular System Frame Manager panel.

Related Information

- [“Main Screens Overview” on page 27](#)
- [“View Frames” on page 30](#)
- [“Display a Rack's View” on page 31](#)
- [“Displaying Dashboards” on page 29](#)
- [“Displaying Details” on page 32](#)
- [“Displaying Job and Status Summaries” on page 41](#)
- [“Display the System Log” on page 44](#)
- [“View Plugin Status and Version” on page 45](#)
- [“Managing Configurations” on page 21](#)

▼ View Frames

1. **At the Navigation menu, under Netra Modular System Services, click Frame Details.**

The panel displayed on the right populates with the Netra Modular System Frames summary.

2. **From the list of frame managers, click an entry to view a summary for that frame manager.**

The details of the frame manager are displayed in the panel, located below the Netra Modular System Frame Detail panel.

Related Information

- [“Main Screens Overview” on page 27](#)
- [“View Frame Managers” on page 30](#)
- [“Display a Rack's View” on page 31](#)
- [“Displaying Dashboards” on page 29](#)
- [“Displaying Details” on page 32](#)
- [“Displaying Job and Status Summaries” on page 41](#)
- [“Display the System Log” on page 44](#)
- [“View Plugin Status and Version” on page 45](#)
- [“Managing Configurations” on page 21](#)

▼ Display a Rack's View

1. **At the Navigation menu, under Netra Modular System Services, click Rack View.**

The panel displayed on the right populates with the Netra Modular System Logical View summary. All of the configured frames are available from a drop-down list. By default, the first entry is displayed on the screen.
2. **From the list of frames, select an entry to view a summary for that rack.**

A graphical image of the rack is displayed in the panel, located below the Netra Modular System Logical View summary.
3. **To view details of the rack components, roll the cursor over the slots on the rack image.**
4. **To view LED status, roll the cursor over the LED indicators on the left side of the rack image.**

Related Information

- [“Main Screens Overview” on page 27](#)
- [“View Frame Managers” on page 30](#)
- [“View Frames” on page 30](#)
- [“Displaying Dashboards” on page 29](#)
- [“Displaying Details” on page 32](#)
- [“Displaying Job and Status Summaries” on page 41](#)
- [“Display the System Log” on page 44](#)
- [“View Plugin Status and Version” on page 45](#)
- [“Managing Configurations” on page 21](#)

Displaying Details

- [“View Frame Details” on page 32](#)
- [“View Rack Components” on page 34](#)
- [“View Slot Assignments” on page 34](#)
- [“View and Edit Alarm and Hot Swap Policies for a Slot” on page 35](#)
- [“View Switches” on page 36](#)
- [“View Servers \(Nodes\)” on page 37](#)
- [“View Optical Patch Panels” on page 38](#)
- [“View FMM Part Numbers” on page 38](#)
- [“View FMM Serial Numbers” on page 39](#)
- [“View Server \(Node\) Serial Numbers” on page 40](#)
- [“View Switch Serial Numbers” on page 40](#)

Related Information

- [“Main Screens Overview” on page 27](#)
- [“Displaying Dashboards” on page 29](#)
- [“Displaying Job and Status Summaries” on page 41](#)
- [“Display the System Log” on page 44](#)
- [“View Plugin Status and Version” on page 45](#)
- [“Managing Configurations” on page 21](#)

▼ View Frame Details

1. **At the Navigation menu, under Netra Modular System Services, click Frame Details.**

The panel displayed on the right populates with the Netra Modular System Frames summary.

2. **From the list of frame managers, click an entry.**

The details of the frame manager are displayed in the panel, located below the Netra Modular System Frame Detail panel.

3. **Click a tab.**

This table provides a description of the content under each tab.

Tab	Description
General	<p>For the frame manager selected, provides general information including status of each frame manager.</p> <p>Tip - Use the scroll bar to view more information within each tab display.</p> <p>See</p> <ul style="list-style-type: none"> ■ “View Frames” on page 30 ■ “View Frame Details” on page 32
Slots	<p>For the frame manager selected, lists the components by slot number.</p> <p>Tip - Click on the underlined slot number to display alarm and hotswap policy for that slot's component.</p> <p>See</p> <ul style="list-style-type: none"> ■ “View Rack Components” on page 34 ■ “View Slot Assignments” on page 34 ■ “View and Edit Alarm and Hot Swap Policies for a Slot” on page 35
Switches	<p>For the frame manager selected, lists the switches by number.</p> <p>Tip - Click on the underlined switch number to display subtabs General and Point to Point Connections.</p> <p>See</p> <ul style="list-style-type: none"> ■ “View Switches” on page 36 ■ “View Switch Serial Numbers” on page 40 ■ “View Switch Point to Point Connections” on page 36
Servers	<p>For the frame manager selected, lists the servers (nodes) by number.</p> <p>Tip - Click on the icons to either power a node on or off or upgrade it.</p> <p>See</p> <ul style="list-style-type: none"> ■ “View Servers (Nodes)” on page 37 ■ “View Server (Node) Serial Numbers” on page 40 ■ “Managing Nodes” on page 24
Optical Patch Panels	<p>For the frame manager selected, lists the optical patch panels (MPO couplers) by number.</p> <p>See</p> <ul style="list-style-type: none"> ■ “View Optical Patch Panels” on page 38 ■ “View Slot Assignments” on page 34 ■ “View Rack Components” on page 34

4. **To go back from a detailed view (after clicking an underlined item), click the Netra Modular System Frame Detail panel heading.**

The display is returned to the overview for previously selected tab.

Related Information

- [“Main Screens Overview” on page 27](#)

- [“Displaying Details” on page 32](#)
- [“Displaying Dashboards” on page 29](#)
- [“Displaying Job and Status Summaries” on page 41](#)
- [“Display the System Log” on page 44](#)
- [“View Plugin Status and Version” on page 45](#)
- [“Managing Configurations” on page 21](#)

▼ View Rack Components

1. **At the Navigation menu, under Netra Modular System Services, click Rack View.**
The panel displayed on the right populates with the Netra Modular System Logical View summary. By default, the first entry in the list of frames is displayed on the screen.
2. **From the drop-down list of frames, select an entry to view the summary.**
A graphical image of the rack is displayed in the panel, located below the Netra Modular System Logical View summary.
3. **To view details of the rack components, roll the cursor over the slots on the rack image.**
4. **To view LED status, roll the cursor over the LED indicators on the left side of the rack image.**

Related Information

- [“Main Screens Overview” on page 27](#)
- [“Displaying Details” on page 32](#)
- [“Displaying Dashboards” on page 29](#)
- [“Displaying Job and Status Summaries” on page 41](#)
- [“Display the System Log” on page 44](#)
- [“View Plugin Status and Version” on page 45](#)
- [“Managing Configurations” on page 21](#)

▼ View Slot Assignments

1. **At the Navigation menu, under Netra Modular System Services, click Frame Details.**
The panel displayed on the right populates with the Netra Modular System Frame Detail panel.

2. From the list of frame managers, click an entry.

The details of the frame manager are displayed in the panel, located below the Netra Modular System Frame Detail panel.

3. Click the Slots tab.

The slot numbers and corresponding details are displayed.

Related Information

- [“Main Screens Overview” on page 27](#)
- [“Displaying Details” on page 32](#)
- [“Displaying Dashboards” on page 29](#)
- [“Displaying Job and Status Summaries” on page 41](#)
- [“Display the System Log” on page 44](#)
- [“View Plugin Status and Version” on page 45](#)
- [“Managing Configurations” on page 21](#)

▼ **View and Edit Alarm and Hot Swap Policies for a Slot**

1. At the Navigation menu, under Netra Modular System Services, click Frame Details.

The panel displayed on the right populates with the Netra Modular System Frame Detail panel.

2. From the list of slots, click an entry.

The details are displayed in the panel, located below the Netra Modular System Frame Detail panel.

3. Click the Slots tab.

The slot numbers and corresponding details are displayed.

4. To view hot swap policies for a slot, click the designated slot number (underlined) to display the Alarm and Hotswap Policy tab.

5. To edit hot swap policies for a slot, click the Edit button, make the changes, then click Submit.

Related Information

- [“Main Screens Overview” on page 27](#)

- [“Displaying Details” on page 32](#)
- [“Displaying Dashboards” on page 29](#)
- [“Displaying Job and Status Summaries” on page 41](#)
- [“Display the System Log” on page 44](#)
- [“View Plugin Status and Version” on page 45](#)
- [“Managing Configurations” on page 21](#)

▼ View Switches

1. **At the Navigation menu, under Netra Modular System Services, click Frame Details.**

The panel displayed on the right populates with the Netra Modular System Frame Detail panel.

2. **From the list of frame managers, click an entry.**

The details of the frame manager are displayed in the panel, located below the Netra Modular System Frame Detail panel.

3. **Click the Switches tab.**

The switches and corresponding details are displayed.

4. **To view details for a switch, click the designated switch number (underlined) to display the General and Point to Point Connections tabs.**

Related Information

- [“Main Screens Overview” on page 27](#)
- [“Displaying Details” on page 32](#)
- [“Displaying Dashboards” on page 29](#)
- [“Displaying Job and Status Summaries” on page 41](#)
- [“Display the System Log” on page 44](#)
- [“View Plugin Status and Version” on page 45](#)
- [“Managing Configurations” on page 21](#)

▼ View Switch Point to Point Connections

1. **At the Navigation menu, under Netra Modular System Services, click Frame Details.**

The panel displayed on the right populates with the Netra Modular System Frame Detail panel.

2. **From the list of frame managers, click an entry.**
The details of the frame manager are displayed in the panel, located below the Netra Modular System Frame Detail panel.
3. **Click the Switches tab.**
The switches and corresponding details are displayed.
4. **To view details for a switch, click the designated switch number (underlined).**
5. **Click the Point to Point Connections tab.**
The display provides details for the selected switch's point-to-point connections.

Related Information

- [“Main Screens Overview” on page 27](#)
- [“Displaying Details” on page 32](#)
- [“Displaying Dashboards” on page 29](#)
- [“Displaying Job and Status Summaries” on page 41](#)
- [“Display the System Log” on page 44](#)
- [“View Plugin Status and Version” on page 45](#)
- [“Managing Configurations” on page 21](#)

▼ View Servers (Nodes)

1. **At the Navigation menu, under Netra Modular System Services, click Frame Details.**
The panel displayed on the right populates with the Netra Modular System Frame Detail panel.
2. **From the list of frame managers, click an entry.**
The details of the frame manager are displayed in the panel, located below the Netra Modular System Frame Detail panel.
3. **Click the Servers tab.**
The servers (nodes) and corresponding details are displayed.

Related Information

- [“Main Screens Overview” on page 27](#)
- [“Displaying Details” on page 32](#)
- [“Displaying Dashboards” on page 29](#)
- [“Displaying Job and Status Summaries” on page 41](#)

- [“Display the System Log” on page 44](#)
- [“View Plugin Status and Version” on page 45](#)
- [“Managing Configurations” on page 21](#)

▼ View Optical Patch Panels

This option displays the MPO coupler (fiber) panel information. Up to four coupler panels can be installed in place of Ethernet fiber switches.

1. **At the Navigation menu, under Netra Modular System Services, click Frame Details.**

The panel displayed on the right populates with the Netra Modular System Frame Detail panel.

2. **From the list of frame managers, click an entry.**

The details of the frame manager are displayed in the panel, located below the Netra Modular System Frame Detail panel.

3. **Click the Optical Patch Panels tab.**

The patch panels (MPO coupler panels) and corresponding details are displayed.

4. **If you want to view the detail for optical patch panels, see [“View Rack Components” on page 34](#).**

If installed, optical patch panels can be viewed in the rack details for slots 37 through 40.

Related Information

- [“Main Screens Overview” on page 27](#)
- [“Displaying Details” on page 32](#)
- [“Displaying Dashboards” on page 29](#)
- [“Displaying Job and Status Summaries” on page 41](#)
- [“Display the System Log” on page 44](#)
- [“View Plugin Status and Version” on page 45](#)
- [“Managing Configurations” on page 21](#)

▼ View FMM Part Numbers

1. **At the Navigation menu, under Netra Modular System Services, click Frame Details.**

The panel displayed on the right populates with the Netra Modular System Frame Detail panel.

2. From the list of frame managers, locate the part number associated for the FMM.

The details of the frame manager are displayed in the panel, located below the Netra Modular System Frame Detail panel.

Related Information

- [“Main Screens Overview” on page 27](#)
- [“Displaying Details” on page 32](#)
- [“Displaying Dashboards” on page 29](#)
- [“Displaying Job and Status Summaries” on page 41](#)
- [“Display the System Log” on page 44](#)
- [“View Plugin Status and Version” on page 45](#)
- [“Managing Configurations” on page 21](#)

▼ View FMM Serial Numbers

1. At the Navigation menu, under Netra Modular System Services, click Frame Details.

The panel displayed on the right populates with the Netra Modular System Frame Detail panel.

2. Click the frame manager for which you want the FMM serial number.

The details of the frame manager are displayed in the panel, located below the Netra Modular System Frame Detail panel.

3. Scroll down in the General tab display to locate the serial number.

Related Information

- [“Main Screens Overview” on page 27](#)
- [“Displaying Details” on page 32](#)
- [“Displaying Dashboards” on page 29](#)
- [“Displaying Job and Status Summaries” on page 41](#)
- [“Display the System Log” on page 44](#)
- [“View Plugin Status and Version” on page 45](#)
- [“Managing Configurations” on page 21](#)

▼ View Server (Node) Serial Numbers

1. **At the Navigation menu, under Netra Modular System Services, click Frame Details.**

The panel displayed on the right populates with the Netra Modular System Frame Detail panel.

2. **Click a frame manager.**

The details of the frame manager are displayed in the panel, located below the Netra Modular System Frame Detail panel.

3. **Click the Servers tab.**

4. **Scroll through the servers (nodes) list to locate the server and serial number.**

Related Information

- [“Main Screens Overview” on page 27](#)
- [“Displaying Details” on page 32](#)
- [“Displaying Dashboards” on page 29](#)
- [“Displaying Job and Status Summaries” on page 41](#)
- [“Display the System Log” on page 44](#)
- [“View Plugin Status and Version” on page 45](#)
- [“Managing Configurations” on page 21](#)

▼ View Switch Serial Numbers

1. **At the Navigation menu, under Netra Modular System Services, click Frame Details.**

The panel displayed on the right populates with the Netra Modular System Frame Detail panel.

2. **Click a frame manager.**

The details of the frame manager are displayed in the panel, located below the Netra Modular System Frame Detail panel.

3. **Click the Switches tab.**

4. **Scroll through the switches list to locate the switch and serial number.**

Related Information

- [“Main Screens Overview” on page 27](#)

- [“Displaying Details” on page 32](#)
- [“Displaying Dashboards” on page 29](#)
- [“Displaying Job and Status Summaries” on page 41](#)
- [“Display the System Log” on page 44](#)
- [“View Plugin Status and Version” on page 45](#)
- [“Managing Configurations” on page 21](#)

Displaying Job and Status Summaries

- [“View Recent Jobs Summary” on page 41](#)
- [“View Frame Manager Status” on page 42](#)
- [“View Switch Status” on page 42](#)
- [“View Node Status” on page 43](#)
- [“View FMM Status” on page 44](#)
- [“View Plugin Status and Version” on page 45](#)

Related Information

- [“Main Screens Overview” on page 27](#)
- [“Displaying Dashboards” on page 29](#)
- [“Displaying Details” on page 32](#)
- [“Display the System Log” on page 44](#)
- [“View Plugin Status and Version” on page 45](#)
- [“Managing Configurations” on page 21](#)
- [“Using the Interface” in *Oracle Fabric Manager 5.0.2 Administration Guide*](#)
- [“Managing Plugins” in *Oracle Fabric Manager 5.0.2 Administration Guide*](#)

▼ View Recent Jobs Summary

1. **At the Navigation menu, under Netra Modular System Services, click one of the following:**
 - **Frame Managers**
The panel displayed on the right populates with the Netra Modular System Frame Managers summary.
 - **Frame Details**

The panel displayed on the right populates with the Netra Modular System Frames summary.

2. Under Recent Jobs Summary, locate the summary.

For detailed information about displays, see [“Displaying Jobs”](#) in *Oracle Fabric Manager 5.0.2 Administration Guide*. For clearing and cancelling job summaries, see [“Managing Jobs”](#) in *Oracle Fabric Manager 5.0.2 Administration Guide*.

Related Information

- [“Main Screens Overview”](#) on page 27
- [“Displaying Job and Status Summaries”](#) on page 41
- [“Displaying Dashboards”](#) on page 29
- [“Displaying Details”](#) on page 32
- [“Display the System Log”](#) on page 44
- [“View Plugin Status and Version”](#) on page 45
- [“Managing Configurations”](#) on page 21

▼ View Frame Manager Status

● **At the Navigation menu, under Netra Modular System Services, click Frame Managers.**

The panel displayed on the right populates with the Netra Modular System Frame Managers summary.

Related Information

- [“Main Screens Overview”](#) on page 27
- [“Displaying Job and Status Summaries”](#) on page 41
- [“Displaying Dashboards”](#) on page 29
- [“Displaying Details”](#) on page 32
- [“Display the System Log”](#) on page 44
- [“View Plugin Status and Version”](#) on page 45
- [“Managing Configurations”](#) on page 21

▼ View Switch Status

1. At the Navigation menu, under Netra Modular System Services, click Frame Details.

The panel displayed on the right populates with the Netra Modular System Frame Detail panel.

- 2. From the list of frame managers, click an entry.**
The details of the frame manager are displayed in the panel, located below the Netra Modular System Frame Detail panel.
- 3. Click the Switches tab.**
The switches and corresponding statuses are displayed.
- 4. To view details for a switch, click the designated switch number (underlined) to display the General and Point to Point Connections tabs.**
The General tab includes the switch's status.

Related Information

- [“Main Screens Overview” on page 27](#)
- [“Displaying Job and Status Summaries” on page 41](#)
- [“Displaying Dashboards” on page 29](#)
- [“Displaying Details” on page 32](#)
- [“Display the System Log” on page 44](#)
- [“View Plugin Status and Version” on page 45](#)
- [“Managing Configurations” on page 21](#)

▼ View Node Status

- 1. At the Navigation menu, under Netra Modular System Services, click Frame Details.**
The panel displayed on the right populates with the Netra Modular System Frame Detail panel.
- 2. From the list of frame managers, click an entry.**
The details of the frame manager are displayed in the panel, located below the Netra Modular System Frame Detail panel.
- 3. Click the Servers tab.**
The servers (nodes) and corresponding statuses are displayed.
- 4. To view a node's detail status and LEDs, see [“View Rack Components” on page 34](#).**

Related Information

- [“Main Screens Overview” on page 27](#)

- [“Displaying Job and Status Summaries” on page 41](#)
- [“Displaying Dashboards” on page 29](#)
- [“Displaying Details” on page 32](#)
- [“Display the System Log” on page 44](#)
- [“View Plugin Status and Version” on page 45](#)
- [“Managing Configurations” on page 21](#)

▼ View FMM Status

1. **At the Navigation menu, under Netra Modular System Services, click Frame Details.**
2. **From the list of frame managers under Netra Modular System Frames summary, select the rack number for which you want to view status.**
3. **From the Netra Modular System Frame Detail panel, click the General tab and scroll down to view the FMM status.**

If the status is OK, the FMM is running.

Related Information

- [“Main Screens Overview” on page 27](#)
- [“Displaying Job and Status Summaries” on page 41](#)
- [“Displaying Dashboards” on page 29](#)
- [“Displaying Details” on page 32](#)
- [“Display the System Log” on page 44](#)
- [“View Plugin Status and Version” on page 45](#)
- [“Managing Configurations” on page 21](#)

▼ Display the System Log

1. **From the Oracle Fabric Manager toolbar, select Download Oracle Fabric Manager Log Files.**
 - See [“Using the Interface” in Oracle Fabric Manager 5.0.2 Administration Guide](#) for icon descriptions.
 - See [“Log Files” in Oracle Fabric Manager 5.0.2 Administration Guide](#).

The log window is displayed.

For information about downloading logs, see [“Download Log Files”](#) in *Oracle Fabric Manager 5.0.2 Administration Guide*.

2. **Navigate through the log by clicking First, Prev, Last, and Next.**
3. **To close the log, click the x in the top right of the pop-up box.**

Related Information

- [“Main Screens Overview”](#) on page 27
- [“Displaying Job and Status Summaries”](#) on page 41
- [“Displaying Dashboards”](#) on page 29
- [“Displaying Details”](#) on page 32
- [“Display the System Log”](#) on page 44
- [“View Plugin Status and Version”](#) on page 45
- [“Managing Configurations”](#) on page 21
- [“Using the Interface”](#) in *Oracle Fabric Manager 5.0.2 Administration Guide*

▼ View Plugin Status and Version

The summary panel displays information about installed plugins and provides tools to add, update, and delete plugins.

- **Using the Oracle Fabric Manager interface, display the plugin status and version information.**

See [“Plugin Manager Summary”](#) in *Oracle Fabric Manager 5.0.2 Administration Guide*.

Related Information

- [“Main Screens Overview”](#) on page 27
- [“Displaying Dashboards”](#) on page 29
- [“Displaying Details”](#) on page 32
- [“Displaying Job and Status Summaries”](#) on page 41
- [“Display the System Log”](#) on page 44
- [“Managing Configurations”](#) on page 21

Index

A

alarm policies, viewing, 35

C

components, viewing, 34

configurations

frame managers, adding, 21

frame managers, deleting, 22

managing, 21, 21

nodes, managing, 24

password, changing, 23

user name, changing, 23

D

dashboards

displaying, 27

frame managers, viewing, 30

frames, viewing, 30

rack, viewing, 31

viewing, 29

details

frames, viewing, 32

viewing, 32

displaying

log, 44

software status, 18

documentation

audience, 7

library URL, 7

overview, 7

required knowledge, 7

downloading software, 12

F

FMM

part numbers, viewing, 38

serial numbers, viewing, 39

status, viewing, 44

frame managers

adding, 21

deleting, 22

status, viewing, 42

viewing dashboard, 30

viewing frame dashboards, 30

frames

configurations, managing, 21

details, viewing, 32

manager status, viewing, 42

H

hot swap policies, viewing, 35

I

information, displaying, 27

installing software, 11, 13

J

jobs summary, viewing, 41

L

logs, displaying, 27, 44

M

MPO coupler panels, viewing, 38

N

nodes

- managing, 24
- powering off, 25
- powering on, 24
- serial numbers, viewing, 40
- status, viewing, 43
- viewing, 37

O

- optical patch panels, viewing, 38
- overview, plugin, 10

P

- part numbers, viewing FMM, 38
- password, changing, 23
- plugin
 - overview, 10
 - status, viewing, 45
 - understanding, 9
- point to point connections, switches, 36
- power
 - off, node, 25
 - on, node, 24

R

- rack
 - components, viewing, 34
 - viewing dashboards, 31
- recent jobs, summaries, viewing, 41
- requirements, software, 10
- restarting software, 17

S

- serial numbers
 - FMM, viewing, 39
 - server, viewing, 40
 - switch, viewing, 40
- servers
 - serial numbers, viewing, 40

- viewing, 37

- slot assignments, viewing, 34

software

- configurations, managing, 21
- displaying status, 18
- downloading, 12
- installing, 9, 11, 13
- installing, prepare for, 11
- removing, 9, 15
- requirements, 10
- restarting, 17
- starting, 17
- starting and stopping, 17
- stopping, 18
- updating, 14
- verifying version, 14
- version, 14

status

- displaying, 27
- FMM, viewing, 44
- frame manager, viewing, 42
- node, viewing, 43
- plugin, viewing, 45
- summaries, 41
- switch, viewing, 42

summaries

- displaying, 27
- recent jobs, viewing, 41

switches

- serial numbers, viewing, 40
- status, viewing, 42
- viewing, 36
- viewing point to point connections, 36

U

- user name, changing, 23

V

- version, software, verifying, 14