

Sun Ethernet Fabric Operating System RIPng Administration Guide

ORACLE®

Part No: E26512-05
July 2015

Part No: E26512-05

Copyright © 2010, 2015, Oracle and/or its affiliates. All rights reserved.

This software and related documentation are provided under a license agreement containing restrictions on use and disclosure and are protected by intellectual property laws. Except as expressly permitted in your license agreement or allowed by law, you may not use, copy, reproduce, translate, broadcast, modify, license, transmit, distribute, exhibit, perform, publish, or display any part, in any form, or by any means. Reverse engineering, disassembly, or decompilation of this software, unless required by law for interoperability, is prohibited.

The information contained herein is subject to change without notice and is not warranted to be error-free. If you find any errors, please report them to us in writing.

If this is software or related documentation that is delivered to the U.S. Government or anyone licensing it on behalf of the U.S. Government, then the following notice is applicable:

U.S. GOVERNMENT END USERS. Oracle programs, including any operating system, integrated software, any programs installed on the hardware, and/or documentation, delivered to U.S. Government end users are "commercial computer software" pursuant to the applicable Federal Acquisition Regulation and agency-specific supplemental regulations. As such, use, duplication, disclosure, modification, and adaptation of the programs, including any operating system, integrated software, any programs installed on the hardware, and/or documentation, shall be subject to license terms and license restrictions applicable to the programs. No other rights are granted to the U.S. Government.

This software or hardware is developed for general use in a variety of information management applications. It is not developed or intended for use in any inherently dangerous applications, including applications that may create a risk of personal injury. If you use this software or hardware in dangerous applications, then you shall be responsible to take all appropriate fail-safe, backup, redundancy, and other measures to ensure its safe use. Oracle Corporation and its affiliates disclaim any liability for any damages caused by use of this software or hardware in dangerous applications.

Oracle and Java are registered trademarks of Oracle and/or its affiliates. Other names may be trademarks of their respective owners.

Intel and Intel Xeon are trademarks or registered trademarks of Intel Corporation. All SPARC trademarks are used under license and are trademarks or registered trademarks of SPARC International, Inc. AMD, Opteron, the AMD logo, and the AMD Opteron logo are trademarks or registered trademarks of Advanced Micro Devices. UNIX is a registered trademark of The Open Group.

This software or hardware and documentation may provide access to or information about content, products, and services from third parties. Oracle Corporation and its affiliates are not responsible for and expressly disclaim all warranties of any kind with respect to third-party content, products, and services unless otherwise set forth in an applicable agreement between you and Oracle. Oracle Corporation and its affiliates will not be responsible for any loss, costs, or damages incurred due to your access to or use of third-party content, products, or services, except as set forth in an applicable agreement between you and Oracle.

Documentation Accessibility

For information about Oracle's commitment to accessibility, visit the Oracle Accessibility Program website at <http://www.oracle.com/pls/topic/lookup?ctx=acc&id=docacc>.

Access to Oracle Support

Oracle customers that have purchased support have access to electronic support through My Oracle Support. For information, visit <http://www.oracle.com/pls/topic/lookup?ctx=acc&id=info> or visit <http://www.oracle.com/pls/topic/lookup?ctx=acc&id=trs> if you are hearing impaired.

Référence: E26512-05

Copyright © 2010, 2015, Oracle et/ou ses affiliés. Tous droits réservés.

Ce logiciel et la documentation qui l'accompagne sont protégés par les lois sur la propriété intellectuelle. Ils sont concédés sous licence et soumis à des restrictions d'utilisation et de divulgation. Sauf stipulation expresse de votre contrat de licence ou de la loi, vous ne pouvez pas copier, reproduire, traduire, diffuser, modifier, breveter, transmettre, distribuer, exposer, exécuter, publier ou afficher le logiciel, même partiellement, sous quelque forme et par quelque procédé que ce soit. Par ailleurs, il est interdit de procéder à toute ingénierie inverse du logiciel, de le désassembler ou de le décompiler, excepté à des fins d'interopérabilité avec des logiciels tiers ou tel que prescrit par la loi.

Les informations fournies dans ce document sont susceptibles de modification sans préavis. Par ailleurs, Oracle Corporation ne garantit pas qu'elles soient exemptes d'erreurs et vous invite, le cas échéant, à lui en faire part par écrit.

Si ce logiciel, ou la documentation qui l'accompagne, est concédé sous licence au Gouvernement des Etats-Unis, ou à toute entité qui délivre la licence de ce logiciel ou l'utilise pour le compte du Gouvernement des Etats-Unis, la notice suivante s'applique:

U.S. GOVERNMENT END USERS. Oracle programs, including any operating system, integrated software, any programs installed on the hardware, and/or documentation, delivered to U.S. Government end users are "commercial computer software" pursuant to the applicable Federal Acquisition Regulation and agency-specific supplemental regulations. As such, use, duplication, disclosure, modification, and adaptation of the programs, including any operating system, integrated software, any programs installed on the hardware, and/or documentation, shall be subject to license terms and license restrictions applicable to the programs. No other rights are granted to the U.S. Government.

Ce logiciel ou matériel a été développé pour un usage général dans le cadre d'applications de gestion des informations. Ce logiciel ou matériel n'est pas conçu ni n'est destiné à être utilisé dans des applications à risque, notamment dans des applications pouvant causer des dommages corporels. Si vous utilisez ce logiciel ou matériel dans le cadre d'applications dangereuses, il est de votre responsabilité de prendre toutes les mesures de secours, de sauvegarde, de redondance et autres mesures nécessaires à son utilisation dans des conditions optimales de sécurité. Oracle Corporation et ses affiliés déclinent toute responsabilité quant aux dommages causés par l'utilisation de ce logiciel ou matériel pour ce type d'applications.

Oracle et Java sont des marques déposées d'Oracle Corporation et/ou de ses affiliés. Tout autre nom mentionné peut correspondre à des marques appartenant à d'autres propriétaires qu'Oracle.

Intel et Intel Xeon sont des marques ou des marques déposées d'Intel Corporation. Toutes les marques SPARC sont utilisées sous licence et sont des marques ou des marques déposées de SPARC International, Inc. AMD, Opteron, le logo AMD et le logo AMD Opteron sont des marques ou des marques déposées d'Advanced Micro Devices. UNIX est une marque déposée d'The Open Group.

Ce logiciel ou matériel et la documentation qui l'accompagne peuvent fournir des informations ou des liens donnant accès à des contenus, des produits et des services émanant de tiers. Oracle Corporation et ses affiliés déclinent toute responsabilité ou garantie expresse quant aux contenus, produits ou services émanant de tiers, sauf mention contraire stipulée dans un contrat entre vous et Oracle. En aucun cas, Oracle Corporation et ses affiliés ne sauraient être tenus pour responsables des pertes subies, des coûts occasionnés ou des dommages causés par l'accès à des contenus, produits ou services tiers, ou à leur utilisation, sauf mention contraire stipulée dans un contrat entre vous et Oracle.

Accessibilité de la documentation

Pour plus d'informations sur l'engagement d'Oracle pour l'accessibilité à la documentation, visitez le site Web Oracle Accessibility Program, à l'adresse <http://www.oracle.com/pls/topic/lookup?ctx=acc&id=docacc>.

Accès au support électronique

Les clients Oracle qui ont souscrit un contrat de support ont accès au support électronique via My Oracle Support. Pour plus d'informations, visitez le site <http://www.oracle.com/pls/topic/lookup?ctx=acc&id=info> ou le site <http://www.oracle.com/pls/topic/lookup?ctx=acc&id=trs> si vous êtes malentendant.

Contents

Using This Documentation	7
Product Documentation Library	7
Acronyms and Abbreviations	7
CLI Command Modes	8
Feedback	8
RIPng Overview	9
Protocol Description	9
Configuring the RIPng Topology Example	9
RIPng Topology Example	9
▼ Configure SEFOS1	10
▼ Configure SEFOS2	13
▼ Configure SEFOS3	14
General Configurations	17
Configuring IPv6 RIPng	17
▼ Enable RIPng	17
▼ Enable and Configure RIPng on Desired IPv6 Interfaces	18
Configuring Redistribution	21
Redistribution Overview	21
▼ Disable Redistribution	22
▼ Disable the split-horizon Option	24
Configuring the Debug Level for RIPng	24
▼ Enable Debugging	24
▼ Disable RIPng Debugging	25

Using This Documentation

- **Overview** – Provides information about configuring RIPng, the IPv6 version of RIP to propagate routing information
- **Audience** – Users implementing RIPng protocol with other protocols in the router stack
- **Required Knowledge** – Basic knowledge of the RIPng protocol

Product Documentation Library

Documentation and resources for this product and related products are available at:

- http://www.oracle.com/goto/es2-72_es2-64/docs
- <http://www.oracle.com/goto/ES1-24/docs>
- <http://www.oracle.com/goto/sn-10gbE-72p/docs>
- <http://www.oracle.com/goto/sb6k-24p-10gbe/docs>

Acronyms and Abbreviations

Acronym or Abbreviation	Explanation
CLI	Command-line interface
IETF	Internet Engineering Task Force
IGP	Internet Gateway Protocol
Oracle ILOM	Oracle Integrated Lights Out Management
LAN	Local area network
NEM	Network Express Module
RIP	Routing Information Protocol
SEFOS	Sun Ethernet Fabric Operating System

CLI Command Modes

The following table lists the configuration modes used in this document with their access and exit methods.

Command Mode	Access Method	Prompt	Exit Method
User EXEC	Access SEFOS from Oracle ILOM with read-only rights (privilege level 1).	SEFOS>	Use <code>logout</code> or <code>exit</code> to return to the Oracle ILOM prompt.
Privileged EXEC	Access SEFOS from Oracle ILOM with full administrative rights (privilege level 15).	SEFOS#	Use the <code>logout</code> or <code>exit</code> command to return to the Oracle ILOM prompt.
Global Configuration	From Privileged EXEC mode, use the <code>configure terminal</code> command.	SEFOS(config)#	Use the <code>end</code> command to return to Privileged EXEC mode.
Interface Configuration	From Global Configuration mode, use the <code>interface interface-type interface-id</code> command.	SEFOS(config-if)#	Use the <code>exit</code> command to return to Global Configuration mode, or use the <code>end</code> command to return to Privileged EXEC mode.

Feedback

Provide feedback on this documentation at:

<http://www.oracle.com/goto/docfeedback>.

RIPng Overview

This section describes the RIPng protocol and how to configure the example topology:

- [“Protocol Description” on page 9](#)
- [“Configuring the RIPng Topology Example” on page 9](#)

Protocol Description

IPv6 RIPng functions similarly to RIP in IPv4, with various enhancements for IPv6. For more information about RIP and its features, refer to the following web sites:

<http://searchnetworking.techtarget.com/definition/Routing-Information-Protocol>

http://www.pulsewan.com/data101/rip_basics.htm

Configuring the RIPng Topology Example

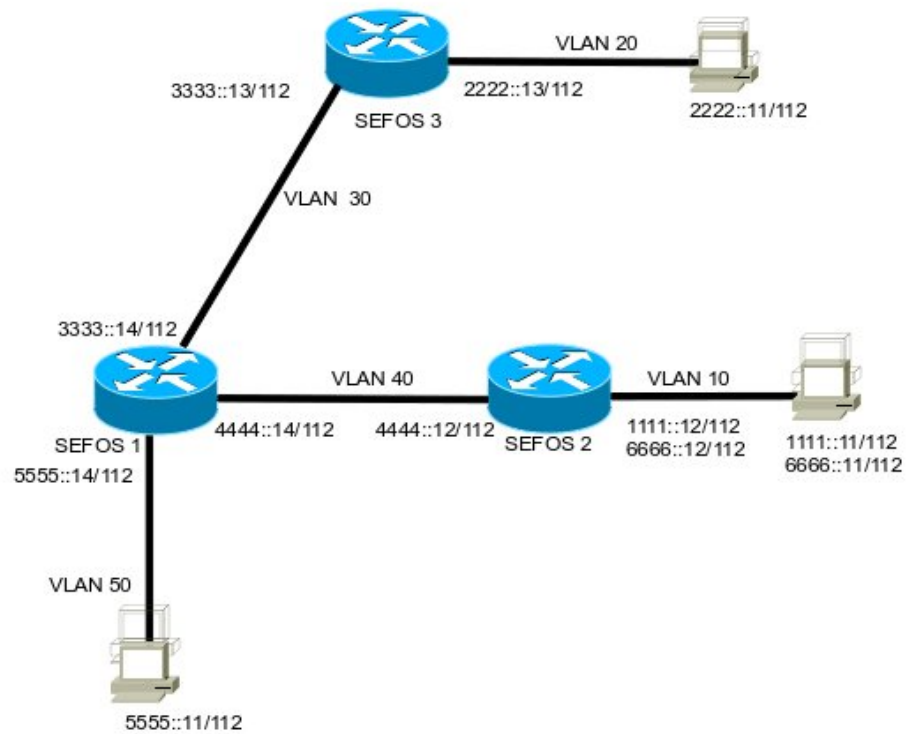
This section describes a simple RIPng topology example and configuration. These configurations are examples and used for illustration purposes only. Variables such as interfaces, IP addresses, and others would be different based on your site topology and configuration.

- [“RIPng Topology Example” on page 9](#)
- [“Configure SEFOS1” on page 10](#)
- [“Configure SEFOS2” on page 13](#)
- [“Configure SEFOS3” on page 14](#)

RIPng Topology Example

The following illustration shows a RIP topology in which the three switches are connected over multiple VLANs interfaces. Switch SEFOS1 has VLAN 30, 40, and 50 configured. Switch SEFOS 3 has VLAN 20 and 30 configured, and switch 2 has VLAN 40 and VLAN 10 configured.

Before configuring the switch to run IPv6 RIPng protocol, IPv6 unicast-routing must be enabled globally, and IPv6 must be enabled on any interface on which IPv6 RIPng is to be processed. This guide describes how to configure RIPng for IPv6 in SEFOS switches and provides configuration examples on the topology shown below.



▼ Configure SEFOS1

Use the following commands to configure VLAN 50, VLAN 40, and VLAN 30 on switch SEFOS1 in the example topology.

1. Configure SEFOS1.

```
SEFOS 1 SEFOS# configure terminal
SEFOS 1 SEFOS(config)# set grp disable
SEFOS 1 SEFOS(config)# set grp disable
```

```

SEFOS 1 SEFOS(config)# interface extreme-ethernet 0/15
SEFOS 1 SEFOS(config-if)# switchport access vlan 50
% Access VLAN does not exist.,Creating vlan
SEFOS 1 SEFOS(config-if)# exit

SEFOS 1 SEFOS(config)# interface vlan 50
SEFOS 1 SEFOS(config-if)# no shutdown
SEFOS 1 SEFOS(config-if)# ipv6 enable
SEFOS 1 SEFOS(config-if)# ipv6 address 5555::14 112
SEFOS 1 SEFOS(config-if)# exit

SEFOS 1 SEFOS(config)# vlan 40
SEFOS 1 SEFOS(config-vlan)# port extreme-ethernet 0/3
SEFOS 1 SEFOS(config-vlan)# exit

SEFOS 1 SEFOS(config)# interface extreme-ethernet 0/3
SEFOS 1 SEFOS(config-if)# no shut
SEFOS 1 SEFOS(config-if)# exit

SEFOS 1 SEFOS(config)# interface vlan 40
SEFOS 1 SEFOS(config-if)# no shut
SEFOS 1 SEFOS(config-if)# ipv6 enable
SEFOS 1 SEFOS(config-if)# ipv6 address 4444::14 112
SEFOS 1 SEFOS(config-if)# end

SEFOS 1 SEFOS# configure terminal
SEFOS 1 SEFOS(config)# vlan 30
SEFOS 1 SEFOS(config-vlan)# port extreme-ethernet 0/7
SEFOS 1 SEFOS(config-vlan)# exit

SEFOS 1 SEFOS(config)# interface extreme-ethernet 0/7
SEFOS 1 SEFOS(config-if)# no shut
SEFOS 1 SEFOS(config-if)# exit

SEFOS 1 SEFOS(config)# interface vlan 30
SEFOS 1 SEFOS(config-if)# no shut
SEFOS 1 SEFOS(config-if)# ipv6 enable
SEFOS 1 SEFOS(config-if)# ipv6 address 3333::14 112
SEFOS 1 SEFOS(config-if)# end
SEFOS 1 SEFOS#

```

2. Show the status of IPv6 interfaces on SEFOS1.

```

SEFOS 1 SEFOS# show ipv6 interface
vlan1 is up, line protocol is up
  IPv6 is Enabled
  Link local address:
    fe80::221:28ff:fe56:d7a9
  Global unicast address(es):
    Not Configured.
  Joined group address(es):

```

```

        ff02::1
        ff02::2
        ff02::1:ff56:d7a9
    MTU is 9216
    ICMP redirects are enabled
    ND DAD is enabled, Number of DAD attempts: 1
    ND router advertisement is disabled
vlan50 is up, line protocol is up
    IPv6 is Enabled
    Link local address:
        fe80::221:28ff:fe56:d7a9
    Global unicast address(es):
        5555::14/112
    Joined group address(es):
        ff02::1
        ff02::2
        ff02::1:ff00:14
        ff02::1:ff56:d7a9
    MTU is 9216
    ICMP redirects are enabled
    ND DAD is enabled, Number of DAD attempts: 1
    ND router advertisement is disabled
vlan40 is up, line protocol is up
    IPv6 is Enabled
    Link local address:
        fe80::221:28ff:fe56:d7a9
    Global unicast address(es):
        4444::14/112
    Joined group address(es):
        ff02::1
        ff02::2
        ff02::1:ff00:14
        ff02::1:ff56:d7a9
    MTU is 9216
    ICMP redirects are enabled
    ND DAD is enabled, Number of DAD attempts: 1
    ND router advertisement is disabled
vlan30 is up, line protocol is up
    IPv6 is Enabled
    Link local address:
        fe80::221:28ff:fe56:d7a9
    Global unicast address(es):
        3333::14/112
    Joined group address(es):
        ff02::1
        ff02::2
        ff02::1:ff00:14
        ff02::1:ff56:d7a9
    MTU is 9216
    ICMP redirects are enabled
    ND DAD is enabled, Number of DAD attempts: 1
    ND router advertisement is disabled

```

▼ Configure SEFOS2

Configure VLAN 10 and VLAN 40 interfaces on SEFOS2 in the example topology.

1. Configure SEFOS2.

```
SEFOS 2 SEFOS# configure terminal
SEFOS 2 SEFOS(config)# set gvrp disable
SEFOS 2 SEFOS(config)# set gmrp disable

SEFOS 2 SEFOS(config)# interface extreme-ethernet 0/15
SEFOS 2 SEFOS(config-if)# switchport access vlan 10
% Access VLAN does not exist.,Creating vlan
SEFOS 2 SEFOS(config-if)# exit

SEFOS 2 SEFOS(config)# interface vlan 10
SEFOS 2 SEFOS(config-if)# no shut
SEFOS 2 SEFOS(config-if)# ipv6 enable
SEFOS 2 SEFOS(config-if)# ipv6 address 1111::12 112
SEFOS 2 SEFOS(config-if)# exit

SEFOS 2 SEFOS(config)# interface vlan 40
SEFOS 2 SEFOS(config-if)# no shut
SEFOS 2 SEFOS(config-if)# ipv6 enable
SEFOS 2 SEFOS(config-if)# ipv6 address 4444::12 112
SEFOS 2 SEFOS(config-if)# exit

SEFOS 2 SEFOS(config)# vlan 40
SEFOS 2 SEFOS(config-vlan)# ports extreme-ethernet 0/3
SEFOS 2 SEFOS(config-vlan)# exit

SEFOS 2 SEFOS(config)# interface extreme-ethernet 0/3
SEFOS 2 SEFOS(config-if)# no shut
SEFOS 2 SEFOS(config-if)# end
```

2. Show the status of IPv6 interfaces on SEFOS2.

```
SEFOS 2 SEFOS# show ipv6 interface
vlan1 is up, line protocol is up
  IPv6 is Enabled
  Link local address:
    fe80::214:4fff:fe6c:630f
  Global unicast address(es):
    Not Configured.
  Joined group address(es):
    ff02::1
    ff02::2
    ff02::1:ff6c:630f
  MTU is 9216
  ICMP redirects are enabled
```

```

ND DAD is enabled, Number of DAD attempts: 1
ND router advertisement is disabled
vlan40 is up, line protocol is up
  IPv6 is Enabled
  Link local address:
    fe80::214:4fff:fe6c:630f
  Global unicast address(es):
    4444::12/112
  Joined group address(es):
    ff02::1
    ff02::2
    ff02::9
    ff02::1:ff00:12
    ff02::1:ff6c:630f
  MTU is 9216
  ICMP redirects are enabled
  ND DAD is enabled, Number of DAD attempts: 1
  ND router advertisement is disabled
vlan10 is up, line protocol is up
  IPv6 is Enabled
  Link local address:
    fe80::214:4fff:fe6c:630f
  Global unicast address(es):
    1111::12/112
    6666::12/112
  Joined group address(es):
    ff02::1
    ff02::2
    ff02::9
    ff02::1:ff00:12
    ff02::1:ff6c:630f
  MTU is 9216
  ICMP redirects are enabled
  ND DAD is enabled, Number of DAD attempts: 1
  ND router advertisement is disabled

```

▼ Configure SEFOS3

Use the following commands to configure VLAN 20 and VLAN 30 on SEFOS3 in the example topology.

1. Configure SEFOS3.

```

SEFOS 3 SEFOS# configure terminal
SEFOS 3 SEFOS(config)# set gvrp disable
SEFOS 3 SEFOS(config)# set gmrp disable

SEFOS 3 SEFOS(config)# interface extreme-ethernet 0/65
SEFOS 3 SEFOS(config-if)# no shutdown
SEFOS 3 SEFOS(config-if)# switchport access vlan 20

```

```

% Access VLAN does not exist.,Creating vlan
SEFOS 3 SEFOS(config-if)# exit

SEFOS 3 SEFOS(config)# interface vlan 20
SEFOS 3 SEFOS(config-if)# no shutdown
SEFOS 3 SEFOS(config-if)# ipv6 enable
SEFOS 3 SEFOS(config-if)# ipv6 address 2222::13 112
SEFOS 3 SEFOS(config-if)# exit

SEFOS 3 SEFOS(config)# vlan 30
SEFOS 3 SEFOS(config-vlan)# port extreme-ethernet 0/1
SEFOS 3 SEFOS(config-vlan)# exit

SEFOS 3 SEFOS(config)# interface extreme-ethernet 0/1
SEFOS 3 SEFOS(config-if)# no shutdown
SEFOS 3 SEFOS(config-if)# exit

SEFOS 3 SEFOS(config)# interface vlan 30
SEFOS 3 SEFOS(config-if)# no shutdown
SEFOS 3 SEFOS(config-if)# ipv6 enable
SEFOS 3 SEFOS(config-if)# ipv6 address 3333::13 112
SEFOS 3 SEFOS(config-if)# end

```

2. Show the status of the IPv6 interface on SEFOS3.

```

SEFOS 3 SEFOS# show ipv6 interface
vlan1 is up, line protocol is up
  IPv6 is Enabled
  Link local address:
    fe80::214:4fff:fe6c:686d
  Global unicast address(es):
    Not Configured.
  Joined group address(es):
    ff02::1
    ff02::2
    ff02::1:ff6c:686d
  MTU is 9216
  ICMP redirects are enabled
  ND DAD is enabled, Number of DAD attempts: 1
  ND router advertisement is disabled
vlan20 is up, line protocol is up
  IPv6 is Enabled
  Link local address:
    fe80::214:4fff:fe6c:686d
  Global unicast address(es):
    2222::13/112
  Joined group address(es):
    ff02::1
    ff02::2
    ff02::9
    ff02::1:ff00:13
    ff02::1:ff6c:686d

```

```
MTU is 9216
ICMP redirects are enabled
ND DAD is enabled, Number of DAD attempts: 1
ND router advertisement is disabled
vlan30 is up, line protocol is up
IPv6 is Enabled
Link local address:
    fe80::214:4fff:fe6c:686d
Global unicast address(es):
    3333::13/112
Joined group address(es):
    ff02::1
    ff02::2
    ff02::9
    ff02::1:ff00:13
    ff02::1:ff6c:686d
MTU is 9216
ICMP redirects are enabled
ND DAD is enabled, Number of DAD attempts: 1
ND router advertisement is disabled

SEFOS 3 SEFOS#
```


General Configurations

This section contains procedures for configuring RIPng in SEFOS switches. See [“RIPng Topology Example” on page 9](#) for descriptions of the topologies that are referenced in the procedures. Before you can configure RIPng, you must perform the basic IPv6 configuration in your environment in similar fashion as described in [“Configuring the RIPng Topology Example” on page 9](#).

- [“Configuring IPv6 RIPng” on page 17](#)
- [“Configuring Redistribution” on page 21](#)
- [“Configuring the Debug Level for RIPng” on page 24](#)

Configuring IPv6 RIPng

Follow these steps to configure IPv6 RIPng on each switch:

1. Enable IPv6 unicast routing globally.
 2. Enable IPv6 RIPng routing globally.
 3. Enable RIPng routing on the desired interfaces.
- [“Enable RIPng” on page 17](#)
 - [“Enable and Configure RIPng on Desired IPv6 Interfaces” on page 18](#)

▼ Enable RIPng

1. **On the switch, enable IPv6 unicast routing.**

```
SEFOS 2 SEFOS# configure terminal  
SEFOS 2 SEFOS(config)# ipv6 unicast-routing
```

2. **Enable RIPng and route redistribution.**

```
SEFOS 2 SEFOS(config)# ipv6 router rip  
SEFOS 2 SEFOS(config-router)# redistribute connected
```

```
SEFOS 2 SEFOS(config-router)# end
SEFOS 2 SEFOS#
```

▼ Enable and Configure RIPng on Desired IPv6 Interfaces

1. Enable RIPng on the interfaces on SEFOS1.

```
SEFOS 1 SEFOS# configure terminal
SEFOS 1 SEFOS(config)# interface vlan 30
SEFOS 1 SEFOS(config-if)# ipv6 rip enable
SEFOS 1 SEFOS(config-if)# exit
```

```
SEFOS 1 SEFOS(config)# interface vlan 40
SEFOS 1 SEFOS(config-if)# ipv6 rip enable
SEFOS 1 SEFOS(config-if)# exit
```

```
SEFOS 1 SEFOS(config)# interface vlan 50
SEFOS 1 SEFOS(config-if)# ipv6 rip enable
SEFOS 1 SEFOS(config-if)#
```

2. Enable RIPng on the interfaces on SEFOS2.

```
SEFOS 2 SEFOS# configure terminal
SEFOS 2 SEFOS(config)# interface vlan 10
SEFOS 2 SEFOS(config-if)# ipv6 rip enable
SEFOS 2 SEFOS(config-if)# exit
```

```
SEFOS 2 SEFOS(config)# interface vlan 40
SEFOS 2 SEFOS(config-if)# ipv6 rip enable
SEFOS 2 SEFOS(config-if)# exit
```

3. Enable RIPng on the interfaces on SEFOS3.

```
SEFOS 3 SEFOS# configure terminal
SEFOS 3 SEFOS(config)# interface vlan 20
SEFOS 3 SEFOS(config-if)# ipv6 rip enable
SEFOS 3 SEFOS(config-if)# exit
```

```
SEFOS 3 SEFOS(config)# interface vlan 30
SEFOS 3 SEFOS(config-if)# ipv6 rip enable
SEFOS 3 SEFOS(config-if)# exit
```

4. Review the RIPng status on SEFOS1.

```
SEFOS 1 SEFOS# show ipv6 rip
RIP port 521, multicast-group ff02::9,Maximum paths is 16
Updates every 30 seconds; expire after 180SEFOS 1 SEFOS# show ipv6 rip database
Garbage Collect after 120 secondsRIP local RIB 1111::/112, metric 2, ripng    vlan40/
fe80::214:4fff:fe6c:630f, expires in 180 secs 2222::/112, metric 2, ripng    vlan30/fe80::
214:4fff:fe6c:686d, expires in 180 secs 3333::/112, metric 2, ripng    vlan30/fe80::214:
4fff:fe6c:686d, expires in 180 secs 3333::/112, metric 1, local    vlan30/::, expires in
180 secs 4444::/112, metric 2, ripng    vlan40/fe80::214:4fff:fe6c:630f, expires in 180
secs 4444::/112, metric 1, local    vlan40/::, expires in 180 secs 5555::/112, metric 1,
local    vlan50/::, expires in 180 secs 6666::/112, metric 2, ripng    vlan40/fe80::214:
4fff:fe6c:630f, expires in 180 secs
Poison Reverse is on
Interface:
vlan50
vlan40
vlan30
Redistribution:
Connected,Routes Redistribution is enabled.
```

```
SEFOS 1 SEFOS# show ipv6 route
IPv6 Routing Table - 8 entries
Codes : C - Connected, S - StaticSEFOS 1 SEFOS# show ipv6 route summary
O - OSPF, R - RIP, B - BGPIPV6 Routing Table Summary - 8 entries    3 Connected, 0 Static, 5
RIP, 0 BGP, 0 OSPF    Number of prefixes:    /112: 8
R 1111::/112 [2/120]
via fe80::214:4fff:fe6c:630f, vlan40
R 2222::/112 [2/120]
via fe80::214:4fff:fe6c:686d, vlan30
C 3333::/112 [1/1]
via ::, vlan30
R 3333::/112 [2/120]
via fe80::214:4fff:fe6c:686d, vlan30
C 4444::/112 [1/1]
via ::, vlan40
R 4444::/112 [2/120]
via fe80::214:4fff:fe6c:630f, vlan40
C 5555::/112 [1/1]
via ::, vlan50
R 6666::/112 [2/120]
via fe80::214:4fff:fe6c:630f, vlan40
```

5. Review the RIP route on SEFOS2.

```
SEFOS 2 SEFOS# show ipv6 rip
RIP port 521, multicast-group ff02::9,Maximum paths is 16
Updates every 30 seconds; expire after 180SEFOS 2 SEFOS# show ipv6 rip database
Garbage Collect after 120 secondsRIP local RIB 1111::/112, metric 1, local    vlan10/::,
expires in 180 secs 2222::/112, metric 3, ripng    vlan40/fe80::221:28ff:fe56:d7a9,
```

```

    expires in 180 secs 3333::/112, metric 2, ripng    vlan40/fe80::221:28ff:fe56:d7a9,
    expires in 180 secs 4444::/112, metric 1, local    vlan40/::, expires in 180 secs 5555::
/112, metric 2, ripng    vlan40/fe80::221:28ff:fe56:d7a9, expires in 180 secs 6666::/112,
    metric 1, local    vlan10/::, expires in 180 secs
Poison Reverse is on
Interface:
vlan40
vlan10
Redistribution:
Connected,Routes Redistribution is enabled.

```

```

SEFOS 2 SEFOS# show ipv6 route
IPv6 Routing Table - 6 entries
Codes : C - Connected, S - StaticSEFOS 2 SEFOS# show ipv6 route summary
O - OSPF, R - RIP, B - BGPIPv6 Routing Table Summary - 6 entries    3 Connected, 0 Static, 3
RIP, 0 BGP, 0 OSPF    Number of prefixes:    /112: 6
C 1111::/112 [1/1]
via ::, vlan10
R 2222::/112 [3/120]
via fe80::221:28ff:fe56:d7a9, vlan40
R 3333::/112 [2/120]
via fe80::221:28ff:fe56:d7a9, vlan40
C 4444::/112 [1/1]
via ::, vlan40
R 5555::/112 [2/120]
via fe80::221:28ff:fe56:d7a9, vlan40
C 6666::/112 [1/1]
via ::, vlan10

```

6. Review the RIP route on SEFOS3.

```

SEFOS 3 SEFOS# show ipv6 rip
RIP port 521, multicast-group ff02::9,Maximum paths is 16
Updates every 30 seconds; expire after 180SEFOS 3 SEFOS# show ipv6 rip database
Garbage Collect after 120 secondsRIP local RIB 1111::/112, metric 3, ripng    vlan30/
fe80::221:28ff:fe56:d7a9, expires in 180 secs 2222::/112, metric 1, local    vlan20/::,
    expires in 180 secs 3333::/112, metric 2, ripng    vlan30/fe80::221:28ff:fe56:d7a9,
    expires in 180 secs 3333::/112, metric 1, local    vlan30/::, expires in 180 secs 4444::
/112, metric 2, ripng    vlan30/fe80::221:28ff:fe56:d7a9, expires in 180 secs 5555::/112,
    metric 2, ripng    vlan30/fe80::221:28ff:fe56:d7a9, expires in 180 secs 6666::/112, metric
    3, ripng    vlan30/fe80::221:28ff:fe56:d7a9, expires in 180 secs
Poison Reverse is on
Interface:
vlan20
vlan30
Redistribution:
Connected,Routes Redistribution is enabled.

```

```

SEFOS 3 SEFOS# show ipv6 route
IPv6 Routing Table - 7 entries
Codes : C - Connected, S - StaticSEFOS 3 SEFOS# show ipv6 route summary
O - OSPF, R - RIP, B - BGPIPV6 Routing Table Summary - 7 entries    2 Connected, 0 Static, 5
RIP, 0 BGP, 0 OSPF    Number of prefixes:    /112: 7
R 1111::/112 [3/120]
via fe80::221:28ff:fe56:d7a9, vlan30
C 2222::/112 [1/1]
via ::, vlan20
C 3333::/112 [1/1]
via ::, vlan30
R 3333::/112 [2/120]
via fe80::221:28ff:fe56:d7a9, vlan30
R 4444::/112 [2/120]
via fe80::221:28ff:fe56:d7a9, vlan30
R 5555::/112 [2/120]
via fe80::221:28ff:fe56:d7a9, vlan30
R 6666::/112 [3/120]
via fe80::221:28ff:fe56:d7a9, vlan30

```

Configuring Redistribution

- [“Redistribution Overview” on page 21](#)
- [“Disable Redistribution” on page 22](#)
- [“Disable the split-horizon Option” on page 24](#)

Redistribution Overview

Redistribution is enabled by default when RIPng is enabled. You can disable or change redistribution status, allowing more control of distributing IPv6 routes. Available options are static, connected and OSPF routes, and metrics. The following example shows a configuration with the default redistribution values.

```

SEFOS 1 SEFOS# show ipv6 rip
RIP port 521, multicast-group ff02::9,Maximum paths is 16
Updates every 30 seconds; expire after 180
Garbage Collect after 120 seconds
Poison Reverse is on
Interface:
vlan40
vlan10
Redistribution:

```

Connected, Routes Redistribution is enabled.

▼ Disable Redistribution

The following example disables the redistribution of directly connected routes (5555::0) on SEFOS1. With redistribution disabled, the route to 5555::0 is not visible on switches SEFOS2 and SEFOS3.

1. On SEFOS2, review the route information before disabling redistribution.

```
SEFOS 2 SEFOS# show ipv6 route

IPv6 Routing Table - 6 entries
Codes : C - Connected, S - Static
        O - OSPF, R - RIP, B - BGP
C   1111::/112   [1/1]
    via ::, vlan10
R   2222::/112   [3/120]
    via fe80::221:28ff:fe56:d7a9, vlan40
R   3333::/112   [2/120]
    via fe80::221:28ff:fe56:d7a9, vlan40
C   4444::/112   [1/1]
    via ::, vlan40
R   5555::/112   [2/120]
    via fe80::221:28ff:fe56:d7a9, vlan40
C   6666::/112   [1/1]
    via ::, vlan10
```

2. On SEFOS3, review the route information before disabling redistribution.

```
SEFOS 3 SEFOS# show ipv6 route

IPv6 Routing Table - 7 entries
Codes : C - Connected, S - Static
        O - OSPF, R - RIP, B - BGP
R   1111::/112   [3/120]
    via fe80::221:28ff:fe56:d7a9, vlan30
C   2222::/112   [1/1]
    via ::, vlan20
C   3333::/112   [1/1]
    via ::, vlan30
R   3333::/112   [2/120]
    via fe80::221:28ff:fe56:d7a9, vlan30
R   4444::/112   [2/120]
    via fe80::221:28ff:fe56:d7a9, vlan30
R   5555::/112   [2/120]
    via fe80::221:28ff:fe56:d7a9, vlan30
R   6666::/112   [3/120]
    via fe80::221:28ff:fe56:d7a9, vlan30
```

3. Disable the route redistribution on SEFOS1.

```
SEFOS 1 SEFOS# configure terminal
SEFOS 1 SEFOS(config)# ipv6 route rip
SEFOS 1 SEFOS(config-router)# no redistribute connected
SEFOS 1 SEFOS(config-router)# exit
```

4. On SEFOS2, review the route information after disabling redistribution.

Note that 5555::/112 [2/120] is missing from the output.

```
SEFOS 2 SEFOS# show ipv6 route
IPv6 Routing Table - 5 entries
Codes : C - Connected, S - Static
        O - OSPF, R - RIP, B - BGP
C   1111::/112   [1/1]
    via ::, vlan10
R   2222::/112   [3/120]
    via fe80::221:28ff:fe56:d7a9, vlan40
R   3333::/112   [3/120]
    via fe80::221:28ff:fe56:d7a9, vlan40
C   4444::/112   [1/1]
    via ::, vlan40
C   6666::/112   [1/1]
    via ::, vlan10
```

5. On SEFOS3, review the route information after disabling redistribution.

Note that 5555::/112 [2/120] is missing from the output.

```
SEFOS 3 SEFOS# show ipv6 route
IPv6 Routing Table - 6 entries
Codes : C - Connected, S - Static
        O - OSPF, R - RIP, B - BGP
R   1111::/112   [3/120]
    via fe80::221:28ff:fe56:d7a9, vlan30
C   2222::/112   [1/1]
    via ::, vlan20
C   3333::/112   [1/1]
    via ::, vlan30
R   3333::/112   [3/120]
    via fe80::221:28ff:fe56:d7a9, vlan30
R   4444::/112   [3/120]
    via fe80::221:28ff:fe56:d7a9, vlan30
R   6666::/112   [3/120]
    via fe80::221:28ff:fe56:d7a9, vlan30
```

▼ Disable the split-horizon Option

By default, the split-horizon option with poison reverse is enabled on all RIPng interfaces.

1. **On SEFOS1, enter the configuration mode for the interface and disable split-horizon.**

```
SEFOS 1 SEFOS# configure terminal
SEFOS 1 SEFOS(config)# interface vlan 40
SEFOS 1 SEFOS(config-if)# no ipv6 split-horizon
SEFOS 1 SEFOS(config-if)# end
SEFOS 1 SEFOS#
```

2. **Review the configuration information.**

```
SEFOS 1 SEFOS# show ipv6 rip

RIP port 521, multicast-group ff02::9,Maximum paths is 16
Updates every 30 seconds; expire after 180
Garbage Collect after 120 seconds
Split Horizon is off;
Interface:
vlan50
vlan40
vlan30
Redistribution:
Connected,Routes Redistribution is enabled.
```

Configuring the Debug Level for RIPng

The IPv6 RIPng debug option can be used to observe and debug RIPng issues.

- [“Enable Debugging” on page 24](#)
- [“Disable RIPng Debugging” on page 25](#)

▼ Enable Debugging

For details of the debug ipv6 rip command, refer to the *Sun Ethernet Fabric Operating System CLI Enterprise Reference Manual*.

- **Enable the debug level.**


```
SEFOS 1 SEFOS# debug ipv6 rip all
```

```
RIP6: RIP6 : Got a update timer expiry on If = 41
RIP6: RIP6: Send RIP6 resp Dest port = 521 If = 41 Resp flag = 1 Dest Addr = ff02::9
RIP6: RIP6BUF: In bufwrite Bufptr = 0x11277798 data = 0x3cb9340e offset = 0 size = 4 Copy = 1
RIP6: RIP6:Combining routes over If=41 RespFlag=1 Horizon=1 DestPort=521 DestAddr=ff02::9
RIP6: Sending over If=41 Route counter=0 Max no of RTE= 456 Len=4 BufPtr=0x3cb932f0
RIP6: RIP6BUF: In bufwrite Bufptr = 0x11277798 data = 0x3cb93280 offset = 4 size = 20 Copy = 1
RIP6: RIP6:Combining routes over If=41 RespFlag=1 Horizon=1 DestPort=521 DestAddr=ff02::9
RIP6: Sending over If=41 Route counter=1 Max no of RTE= 456 Len=24 BufPtr=0x3cb932f0
RIP6: RIP6BUF: In bufwrite Bufptr = 0x11277798 data = 0x3cb93280 offset = 24 size = 20 Copy =
  1
RIP6: RIP6:Combining routes over If=41 RespFlag=1 Horizon=1 DestPort=521 DestAddr=ff02::9
RIP6: Sending over If=41 Route counter=2 Max no of RTE= 456 Len=44 BufPtr=0x3cb932f0
RIP6: RIP6BUF: In bufwrite Bufptr = 0x11277798 data = 0x3cb93280 offset = 44 size = 20 Copy =
  1
RIP6: RIP6:Combining routes over If=41 RespFlag=1 Horizon=1 DestPort=521 DestAddr=ff02::9
RIP6: Sending over If=41 Route counter=3 Max no of RTE= 456 Len=64 BufPtr=0x3cb932f0
RIP6: RIP6BUF: In bufwrite Bufptr = 0x11277798 data = 0x3cb93280 offset = 64 size = 20 Copy =
  1
RIP6: RIP6:Combining routes over If=41 RespFlag=1 Horizon=1 DestPort=521 DestAddr=ff02::9
RIP6: Sending over If=41 Route counter=4 Max no of RTE= 456 Len=84 BufPtr=0x3cb932f0
RIP6: RIP6BUF: In bufwrite Bufptr = 0x11277798 data = 0x3cb93280 offset = 84 size = 20 Copy =
  1
RIP6: RIP6:Combining routes over If=41 RespFlag=1 Horizon=1 DestPort=521 DestAddr=ff02::9
RIP6: Sending over If=41 Route counter=5 Max no of RTE= 456 Len=104 BufPtr=0x3cb932f0
RIP6: RIP6BUF: In bufwrite Bufptr = 0x11277798 data = 0x3cb93280 offset = 104 size = 20 Copy =
  1
RIP6: RIP6:RIP6 send Buf=0x11277798 Send flag=1 DstUDP6Port=521 If=41 DestAddr=ff02::9 Len=124
RIP6: RIP6LIB: Starting timer Id = 3 Duration = 30 Timer Node = 0x11702424
RIP6: RIP6BUF: Reading from buf = 0x112777f8 data = 0x3cb934f4 offset = 0 size = 4 copy = 0
RIP6: RIP6BUF: Returning pointer = 0x35840d80 local data = 0x3cb934f4
RIP6: RIP6 : The RIP6 header has Command = 2 Version = 1 Reserved field = 0
RIP6: RIP6:rcvd resp Buf=0x112777f8 HopLim=255 Len=124 If=41 SrcAddr=ff02::9 DestAddr=fe80::
221:28ff:fe56:d7a9
RIP6: RIP6 : Received RIP6 response buffer :
RIP6: RIP6:sndrOfRIPngRespDidnt putLLocalSrcAddr RespCameOnIf=41 SrcAddr=FF02:0000:0000:0000:
0000:0000:0000:0009 DesAddr=FE80:0000:0000:0000:0221:28FF
```

▼ Disable RIPng Debugging

For details of the `no debug ipv6 rip` command, refer to the *Sun Ethernet Fabric Operating System CLI Enterprise Reference Manual*.

- **Type.**

```
SEFOS 1 SEFOS# no debug ipv6 rip
```

