

ORACLE[®]

PRIMAVERA

New Features in Primavera Gateway 15.2

COPYRIGHT & TRADEMARKS

Copyright © 2015, Oracle and/or its affiliates. All rights reserved.

Oracle is a registered trademark of Oracle Corporation and/or its affiliates. Other names may be trademarks of their respective owners.

This software and related documentation are provided under a license agreement containing restrictions on use and disclosure and are protected by intellectual property laws. Except as expressly permitted in your license agreement or allowed by law, you may not use, copy, reproduce, translate, broadcast, modify, license, transmit, distribute, exhibit, perform, publish or display any part, in any form, or by any means. Reverse engineering, disassembly, or decompilation of this software, unless required by law for interoperability, is prohibited.

The information contained herein is subject to change without notice and is not warranted to be error-free. If you find any errors, please report them to us in writing.

If this software or related documentation is delivered to the U.S. Government or anyone licensing it on behalf of the U.S. Government, the following notice is applicable:

U.S. GOVERNMENT RIGHTS

Programs, software, databases, and related documentation and technical data delivered to U.S. Government customers are “commercial computer software” or “commercial technical data” pursuant to the applicable Federal Acquisition Regulation and agency-specific supplemental regulations. As such, the use, duplication, disclosure, modification, and adaptation shall be subject to the restrictions and license terms set forth in the applicable Government contract, and, to the extent applicable by the terms of the Government contract, the additional rights set forth in FAR 52.227-19, Commercial Computer Software License (December 2007). Oracle USA, Inc., 500 Oracle Parkway, Redwood City, CA 94065.

This software is developed for general use in a variety of information management applications. It is not developed or intended for use in any inherently dangerous applications, including applications which may create a risk of personal injury. If you use this software in dangerous applications, then you shall be responsible to take all appropriate fail-safe, backup, redundancy and other measures to ensure the safe use of this software. Oracle Corporation and its affiliates disclaim any liability for any damages caused by use of this software in dangerous applications.

This software and documentation may provide access to or information on content, products and services from third parties. Oracle Corporation and its affiliates are not responsible for and expressly disclaim all warranties of any kind with respect to third party content, products and services. Oracle Corporation and its affiliates will not be responsible for any loss, costs, or damages incurred due to your access to or use of third party content, products or services.

NOTE: Duplication or distribution of this document without written permission from Oracle Corp. is prohibited.

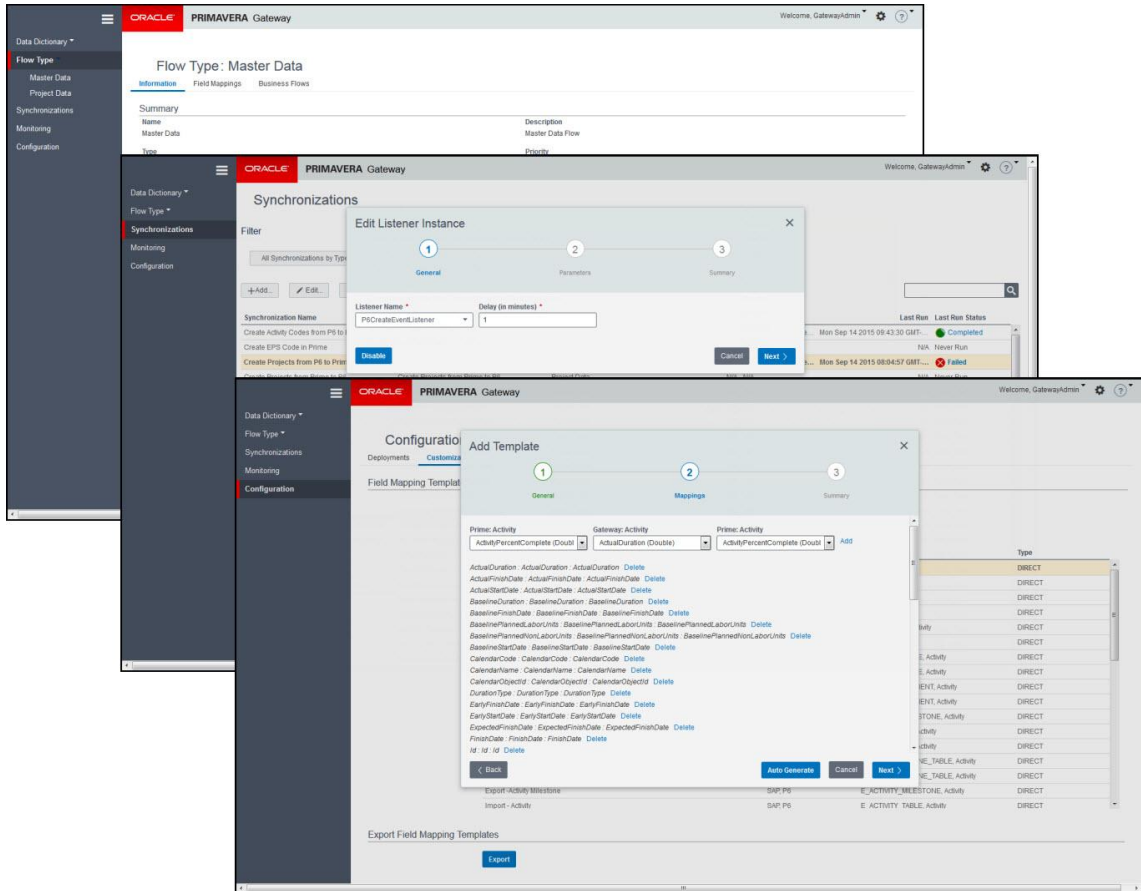
CONTENTS

| | |
|--|----------|
| New Features in Primavera Gateway 15.2 | 1 |
| Simplified Flows Enhancement..... | 2 |
| User Roles with Limited Data Access..... | 3 |
| P6 Event Provider and P6 Event Listener Enhancements | 4 |
| Field Mapping Template Enhancements | 5 |
| Downloading Log Files of a Synchronization Job | 6 |
| Dynamic P6 Tab in Gateway Settings..... | 7 |
| Support for SAML 2.0 Authentication..... | 8 |

New Features in Primavera Gateway 15.2

New features include:

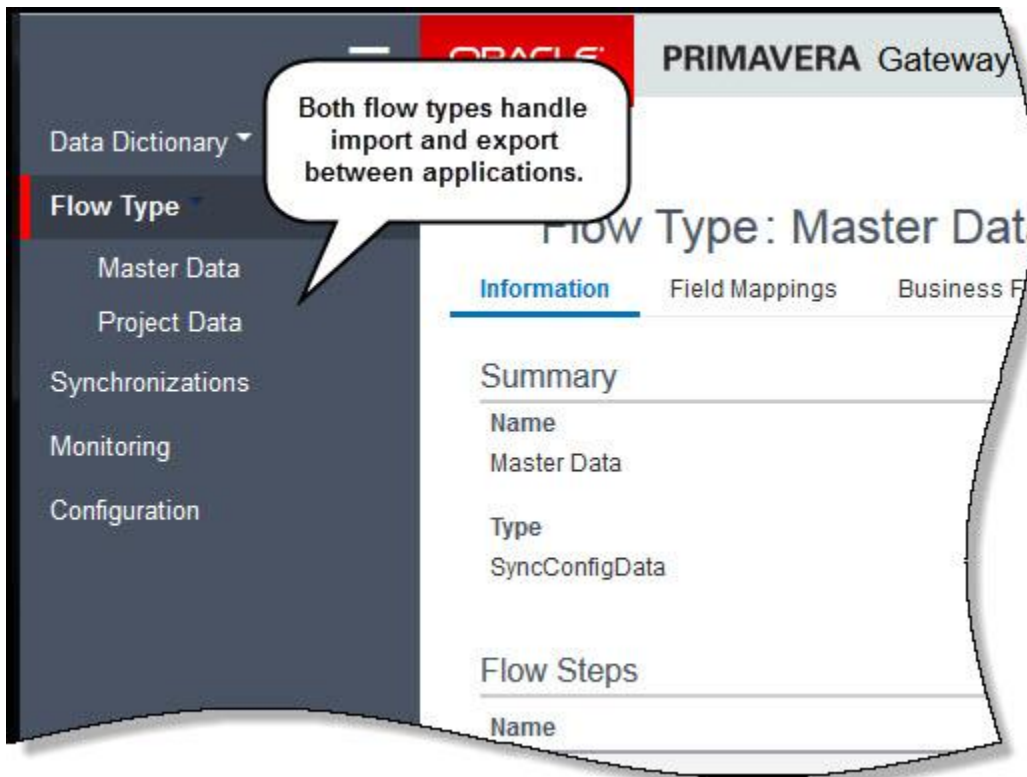
- Simplified flows
- P6 event provider and listener
- Field mapping template enhancements
- Dynamic P6 tab in settings



Simplified Flows Enhancement

Primavera Gateway 15.2 supports two flow types: Master Data and Project Data. The other flow types have been removed making it simpler and easier to integrate data.

- **Master Data:** Define global-level data that is exported/imported between two different applications (for example, from P6 to Prime) or between two different deployments of the same application.
- **Project Data:** Define project-level data that is exported/imported between two different applications or between two different deployments of the same application.



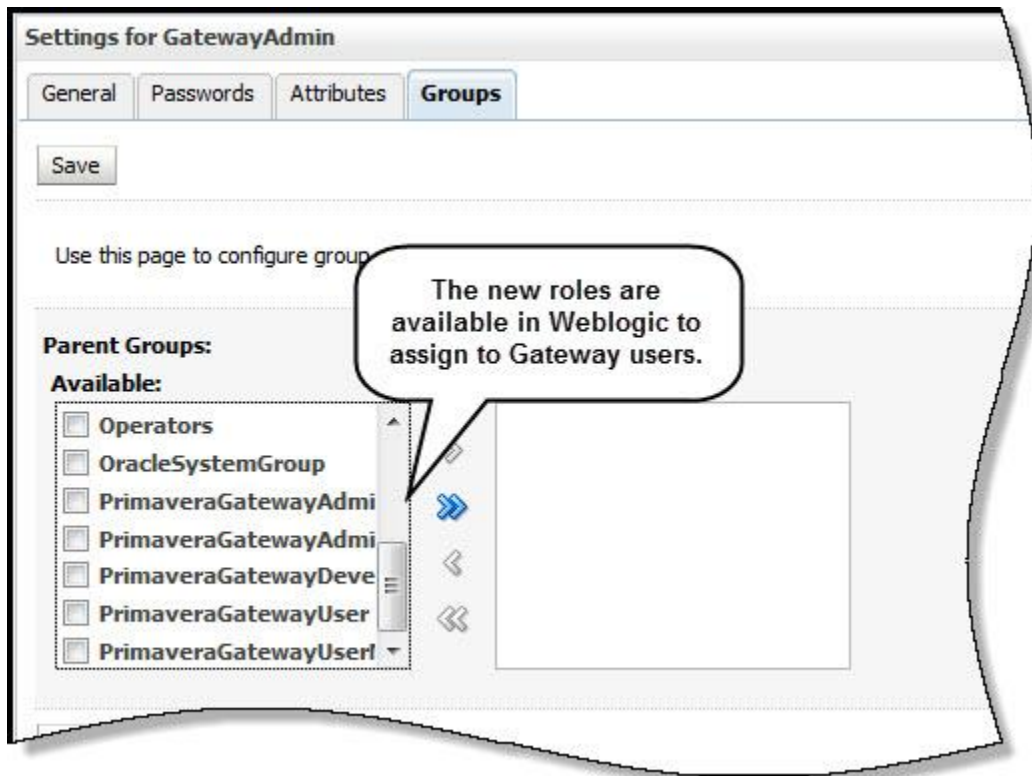
To access this feature: On the left navigation mention, click Flow Type.

User Roles with Limited Data Access

Two new roles have been added to Gateway to limit access to data being synchronized:

- **GatewayAdminNoDataAccess:** Perform all actions in Gateway except view or download log files in each flow step when monitoring a synchronization job.
- **GatewayUserNoDataAccess:** Synchronize and monitor jobs in Gateway but cannot view or download log files of a synchronization job from the Job Details page.

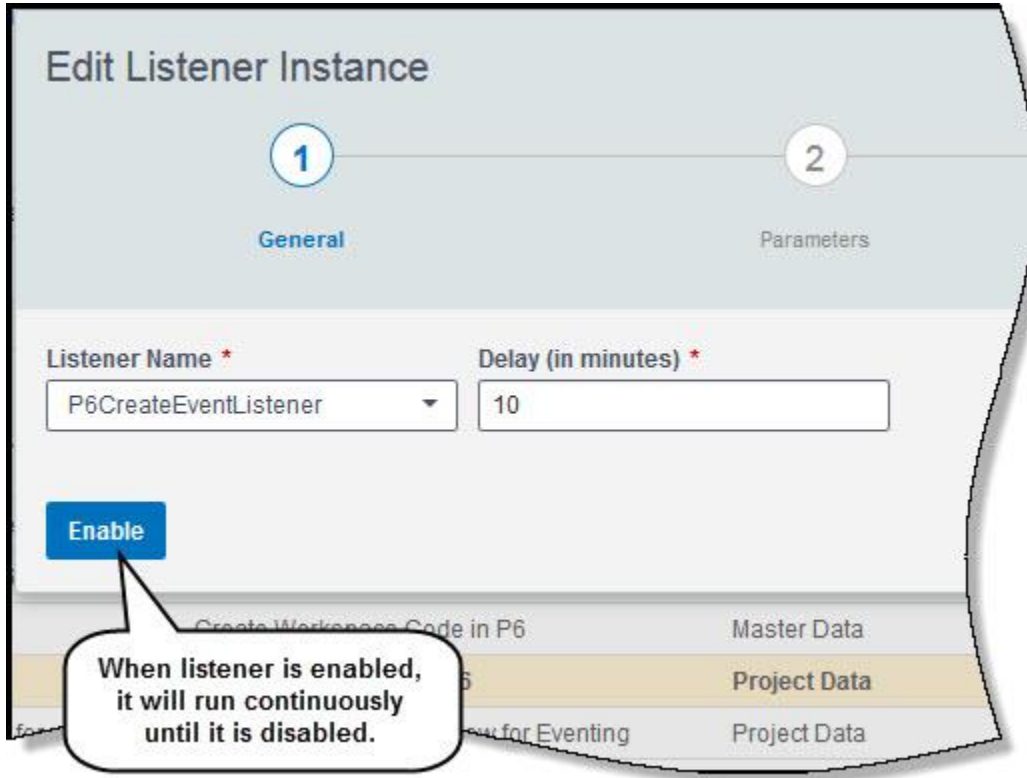
Both roles can view errors and warning messages associated with each step.



To access this feature: Login into Weblogic, create a user and assign the user to the group.

P6 Event Provider and P6 Event Listener Enhancements

Primavera Gateway 15.2 enables synchronizations to be triggered based on defined P6 events. The P6 event provider is associated with the following types of P6 event listeners in Primavera Gateway: P6UpdateEventListener and P6CreateEventListener.



To access this feature:

- On the synchronizations page, select a synchronization that has P6 deployment as the source.
- Select the Run on Event button

Field Mapping Template Enhancements

In Gateway 15.2, define custom field-mapping templates by mapping more than one provider business object to a single Gateway business object. When defining field-mapping templates, use auto suggest and auto generate field mappings for those fields that are identical to the provider business object and Gateway business objects.

Add Template

1 General 2 Mappings 3 Summary

P6: Activity Gateway: Activity Prime: Activity

ActualStartDate (DateTime) ActualStartDate (DateTime) ActualStartDate (DateTime) Add

ActualDuration : ActualDuration : ActualDuration Delete
ActualFinishDate : ActualFinishDate : ActualFinishDate Delete
ActualStartDate : ActualStartDate : ActualStartDate Delete
BaselineDuration : BaselineDuration : BaselineDuration Delete
BaselineFinishDate : BaselineFinishDate : BaselineFinishDate Delete
BaselinePlannedLaborUnits : BaselinePlannedLaborUnits : BaselinePlannedLaborUnits Delete
BaselinePlannedNonLaborUnits : BaselinePlannedNonLaborUnits : BaselinePlannedNonLaborUnits Delete
BaselineStartDate : BaselineStartDate : BaselineStartDate Delete
CalendarName : CalendarName : CalendarName Delete
CalendarObjectId : CalendarObjectId : CalendarObjectId Delete
DurationType : DurationType : DurationType Delete
EarlyFinishDate : EarlyFinishDate : EarlyFinishDate Delete
EarlyStartDate : EarlyStartDate : EarlyStartDate Delete
ExpectedFinishDate : ExpectedFinishDate : ExpectedFinishDate Delete
FinishDate : FinishDate : FinishDate Delete
Id : Id : Id Delete
IsStarred : IsStarred : IsStarred Delete

Use Auto Generate to map fields that are identical.

Auto Generate Cancel Next

To access this feature:

- On the Configuration page, select Customization.
- Add a field mapping template.
- On the Mappings section, select Auto Generate.

Downloading Log Files of a Synchronization Job

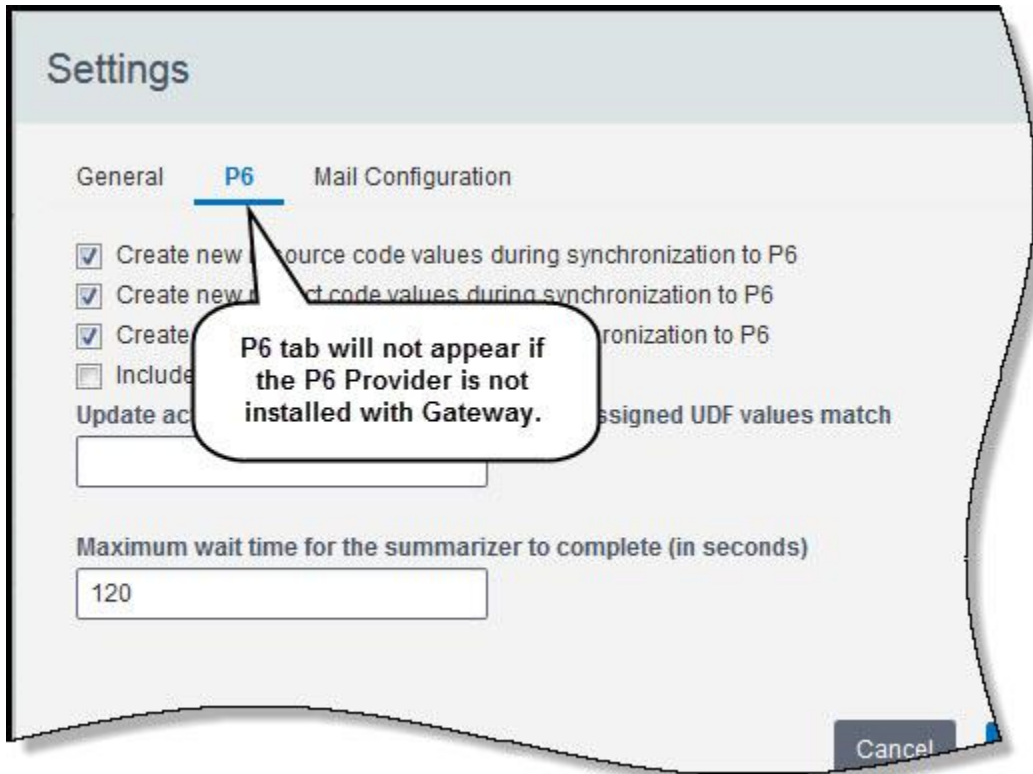
In Primavera Gateway 15.2, you can download log files corresponding to a synchronization job in one zip file. This makes it easier to get all the log files at once instead of going into each job detail to download the log file.



To access this feature: On the Monitoring page, select a job and click Download.

Dynamic P6 Tab in Gateway Settings

In Primavera Gateway 15.2, the P6 provider is no longer required to be installed with P6. The P6 tab displays on the Settings page only if you chose to install the P6 provider at installation.



To access this feature: In the user control panel, click the Settings icon.

Support for SAML 2.0 Authentication

In Primavera Gateway 15.2, the P6 adapter supports SAML 2.0 Authentication and P6 deployments can be configured to use SAML 2.0 Authentication.



To access this feature: On the Configuration page, edit the P6 Deployment.