

**Oracle® Agile Product Lifecycle Management for Process
Integration Guide for Agile Product Portfolio Management**

Feature Pack 4.1

E64706-02

August 2015

ORACLE®

Copyrights and Trademarks

Agile Product Lifecycle Management for Process

Copyright © 1995, 2015, Oracle and/or its affiliates. All rights reserved.

This software and related documentation are provided under a license agreement containing restrictions on use and disclosure and are protected by intellectual property laws. Except as expressly permitted in your license agreement or allowed by law, you may not use, copy, reproduce, translate, broadcast, modify, license, transmit, distribute, exhibit, perform, publish, or display any part, in any form, or by any means. Reverse engineering, disassembly, or decompilation of this software, unless required by law for interoperability, is prohibited.

The information contained herein is subject to change without notice and is not warranted to be error-free. If you find any errors, please report them to us in writing.

If this is software or related documentation that is delivered to the U.S. Government or anyone licensing it on behalf of the U.S. Government, the following notice is applicable:

U.S. GOVERNMENT END USERS: Oracle programs, including any operating system, integrated software, any programs installed on the hardware, and/or documentation, delivered to U.S. Government end users are "commercial computer software" pursuant to the applicable Federal Acquisition Regulation and agency-specific supplemental regulations. As such, use, duplication, disclosure, modification, and adaptation of the programs, including any operating system, integrated software, any programs installed on the hardware, and/or documentation, shall be subject to license terms and license restrictions applicable to the programs. No other rights are granted to the U.S. Government.

This software or hardware is developed for general use in a variety of information management applications. It is not developed or intended for use in any inherently dangerous applications, including applications that may create a risk of personal injury. If you use this software or hardware in dangerous applications, then you shall be responsible to take all appropriate fail-safe, backup, redundancy, and other measures to ensure its safe use. Oracle Corporation and its affiliates disclaim any liability for any damages caused by use of this software or hardware in dangerous applications.

Oracle and Java are registered trademarks of Oracle and/or its affiliates. Other names may be trademarks of their respective owners.

Intel and Intel Xeon are trademarks or registered trademarks of Intel Corporation. All SPARC trademarks are used under license and are trademarks or registered trademarks of SPARC International, Inc. AMD, Opteron, the AMD logo, and the AMD Opteron logo are trademarks or registered trademarks of Advanced Micro Devices. UNIX is a registered trademark of The Open Group.

This software or hardware and documentation may provide access to or information on content, products, and services from third parties. Oracle Corporation and its affiliates are not responsible for and expressly disclaim all warranties of any kind with respect to third-party content, products, and

services. Oracle Corporation and its affiliates will not be responsible for any loss, costs, or damages incurred due to your access to or use of third-party content, products, or services.

Contents

PREFACE.....	6
Audience	6
Variability of Installations	6
Documentation Accessibility.....	6
Access to Oracle Support	6
Software Availability	6
CHAPTER 1—INSTALLING PRODUCT PORTFOLIO MANAGEMENT	7
Introduction	7
Use Cases	7
Supported Versions.....	9
Installation	9
Adding New Files to Web Application Folders and Config.....	9
Adding Translations	9
PLM for Process Configuration	10
GSM Configuration.....	10
Integrating the Web Application Configuration	11
Adding Tool Button UI Extension	12
AgileIntegrationConfig.xml	12
Certificate Configuration.....	13
A9 Configuration	13
Installing Hotfixes.....	13
Setting up Reference Objects	13
Certificate Configuration.....	20
CHAPTER 2—USING AGILE PRODUCT PORTFOLIO MANAGEMENT	21
Adding a P4P Specification from A9.....	21
Viewing PLM for Process Specification Details in Quick View	21
Navigating to Specification from A9	22

Viewing Linked A9 Projects and Tasks from P4P	22
Using Workflow Actions to Notify A9 of Changes to Linked PLM for Process Specifications.....	23
APPENDIX A—FILES TO ADD FOR INSTALLATION.....	25
APPENDIX B—TROUBLESHOOTING.....	26

Preface

Audience

This guide is intended for client programmers involved with integrating Oracle Agile Product Lifecycle Management for Process. Information about using Oracle Agile PLM for Process resides in application-specific user guides. Information about administering Oracle Agile PLM for Process resides in the *Oracle Agile Product Lifecycle Management for Process Administrator User Guide*.

Variability of Installations

Descriptions and illustrations of the Agile PLM for Process user interface included in this manual may not match your installation. The user interface of Agile PLM for Process applications and the features included can vary greatly depending on such variables as:

- Which applications your organization has purchased and installed
- Configuration settings that may turn features off or on
- Customization specific to your organization
- Security settings as they apply to the system and your user account

Documentation Accessibility

For information about Oracle's commitment to accessibility, visit the Oracle Accessibility Program website at <http://www.oracle.com/pls/topic/lookup?ctx=acc&id=docacc>.

Access to Oracle Support

Oracle customers have access to electronic support through My Oracle Support. For information, visit <http://www.oracle.com/pls/topic/lookup?ctx=acc&id=info> or visit <http://www.oracle.com/pls/topic/lookup?ctx=acc&id=trs> if you are hearing impaired.

Software Availability

Oracle Software Delivery Cloud (OSDC) provides the latest copy of the core software. Note the core software does not include all patches and hot fixes. Access OSDC at:

<http://edelivery.oracle.com>

Chapter 1—Installing Product Portfolio Management

This user guide explains integration of Agile Product Portfolio Management (PPM) with Agile Product Lifecycle Management for Process (PLM for Process).

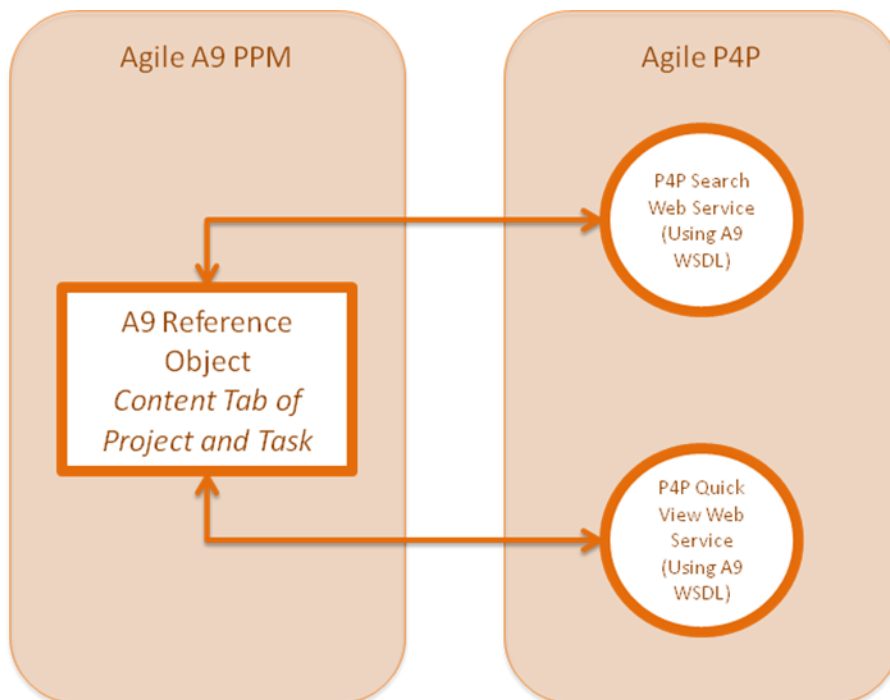
Introduction

Agile PPM is a web-based application that enables users to manage all aspects of a project or program. PPM is fully integrated with the complete Agile PLM suite of products to maintain a centralized view of project records and associated product information within the organization. Executives use the PPM Dashboards to view portfolio data pertaining to all projects or programs. Portfolio data includes risks such as schedule slips, lack of resources, and project costs that directly contribute to the overall status of the project.

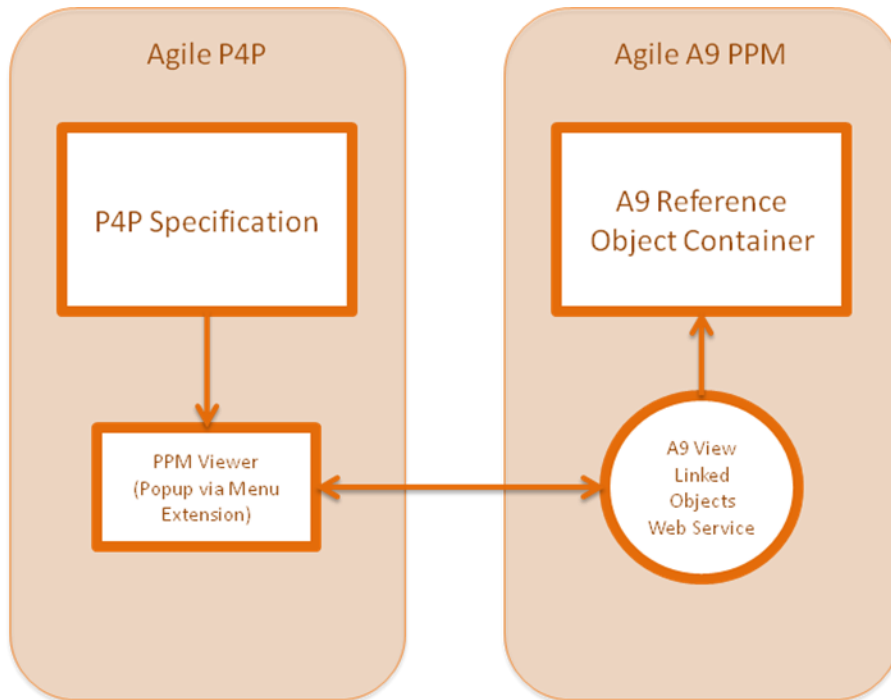
Use Cases

Let's examine three use cases demonstrating the PPM integration:

1. Adding PLM for Process specification as an A9 reference object

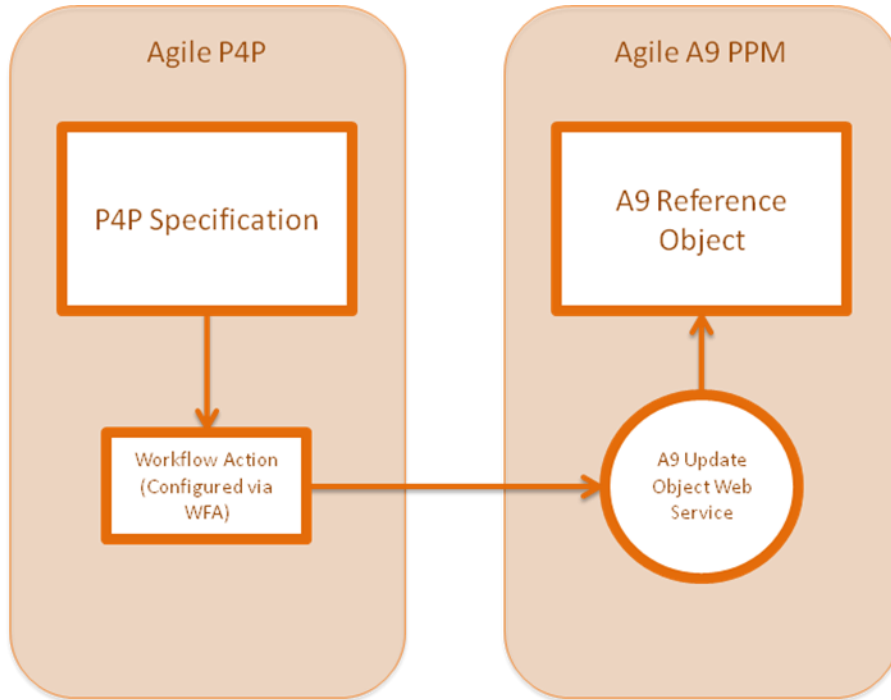


2. Viewing linked A9 objects from a PLM for Process specification



8

3. Updating reference object's status in A9 from a PLM for Process specification



9

This section describes how to install Agile Product Portfolio Management integration.

Supported Versions

The following versions of PLM for Process and A9 are supported:

- PLM for Process 6.2 with Feature Pack 4.1
- A9 9.3.4

Installation

Adding New Files to Web Application Folders and Config

- Copy the Config and Web folders in the .\Install directory to the P4P HOME directory to add necessary files to config, web\gsm and web\integration. See [Appendix A—Files to Add for Installation](#) on [page 25](#) for a list of files.

Adding Translations

- Run the SQL scripts in the .\Install\scripts\db directory in order.

PLM for Process Configuration

GSM Configuration

1. Verify that the P4P_HOME\Web\gsm\bin directory contains the ProdikaAPILib.dll. If not, copy it into this directory from P4P_HOME\SharedLibs.
2. Enable AgileIntegrationService in GSM by adding the following to P4P_HOME\Web\gsm\Web.config:

- a) Under configuration/configSections add the following node:

```
<section name="AgileIntegrationConfig"
type="Xeno.Prodika.XML.XMLMergeConfigHandler,CoreAppPlatform"/>
```

- b) Under configuration/ add the following:

```
<AgileIntegrationConfig
handler="Class:PPM_WebServices.Config.AgileIntegrationConfigHandler,PPM_Webservi
ces"
configExtends="file:%CONFIG_HOME%\Extensions\AgileIntegrationConfig.xml,AgileInt
egrationConfig"/>
```

3. Enable a web service client to Agile Business Object Web Services by adding the following to the <system.serviceModel> node of the P4P_HOME\Web\gsm\Web.config:

```
<bindings>
  <customBinding>
    <binding name="SamlOverSsl">
      <security defaultAlgorithmSuite="Default"
authenticationMode="IssuedTokenOverTransport"
          requireDerivedKeys="true" securityHeaderLayout="Strict"
includeTimestamp="true"
          keyEntropyMode="CombinedEntropy"
messageSecurityVersion="Default">
        <issuedTokenParameters keyType="BearerKey"
tokenType="http://docs.oasis-open.org/wss/oasis-wss-saml-token-profile-
1.1#SAMLV1.1">
          </issuedTokenParameters>
        <localClientSettings cacheCookies="true"
detectReplays="false"
          replayCacheSize="900000" maxClockSkew="00:05:00"
maxCookieCachingTime="Infinite"
          replayWindow="00:05:00"
sessionKeyRenewalInterval="10:00:00"
          sessionKeyRolloverInterval="00:05:00"
reconnectTransportOnFailure="true"
          timestampValidityDuration="00:05:00"
cookieRenewalThresholdPercentage="60" />
        <localServiceSettings detectReplays="false"
issuedCookieLifetime="10:00:00"
```

```

        maxStatefulNegotiations="128"
replayCacheSize="900000" maxClockSkew="00:05:00"
        negotiationTimeout="00:01:00"
replayWindow="00:05:00" inactivityTimeout="00:02:00"
        sessionKeyRenewalInterval="15:00:00"
sessionKeyRolloverInterval="00:05:00"
        reconnectTransportOnFailure="true"
maxPendingSessions="128"
        maxCachedCookies="1000"
timestampValidityDuration="00:05:00" />
        <secureConversationBootstrap />
        </security>
        <textMessageEncoding messageVersion="Soap11" />
        <transactionFlow transactionProtocol="WSAtomicTransaction11"
/>
        <httpsTransport requireClientCertificate="false" />
    </binding>
</customBinding></bindings>
<client>
    <endpoint binding="customBinding" bindingConfiguration="Sam1OverSsl"
contract="AgileBusinessObject.BusinessObject_PortType" name="BusinessObject" />
</client>

```

- Note that the security modes and binding types of these WCF web service configurations can be modified to support the requirements of the target environment.

Integrating the Web Application Configuration

- Create an Application under P4P_Site\Integration using IIS Manager.
Alias: PPMContracts
Physical Path: P4P_HOME\Web\integration\contracts\PPM
- Update P4P_HOME\Web\Integration\Web.config as follows:
 - Under configuration/FormsAuthenticationHelper add the following node:

```

<SkipPage xmlMergeKey="LinkedProjectsService.svc"
name="LinkedProjectsService.svc"/>
<SkipPage xmlMergeKey="QuickViewReferenceObjectService.svc"
name="QuickViewReferenceObjectService.svc"/>
<SkipPage xmlMergeKey="ReferenceObjectService.svc"
name="ReferenceObjectService.svc"/>

```

- If segment security is enabled, update P4P_HOME\Web\integration\contracts\PPM\Web.config. Add the following line under the configuration/Prodika/Profiles/WorkProfile/Services node.
`<config key="Xeno.Prodika.Segment.ISegmentService" value="Services/SegmentService"/>`

Adding Tool Button UI Extension

1. Update config/extensions/MenuConfig-Extensions.xml as follows to add role security to PPM UI integration:

- a) Under

MenuConfig/MenuBuilderServiceConfigExtensions/Xeno.Menu/Providers/Provider ID="SecurityProvider"/SecurityProfiles add the following node:

```
<SecurityProfile ID="PPMSecurityProfile" Mode="Visibility" Application="GSM">
  <Allow Roles="*" />
</SecurityProfile>
```

2. Update config/extensions/SiteMap-Extensions.xml as follows to add PPM tool button to GSM navigation bar:

- a) Under SiteMap/MenuItem ID="GSMNavSpec"/MenuItem ID="toolbuttons" add the following node:

```
<MenuItem ID="lblPPM" MenuType="icon" DisplayText="**PPM"
SecurityProfileRef="PPMSecurityProfile" Visible="true" HotKey="alt+p"
SortOrder="180"
ClientSideCommand="YDialog.open( '/gsm/PPM/PPM.aspx?SPEC_PKID='+GetObjectHeader_0
bjectPKID() + '&amp;SuppressDone=true', '_mypopupwindow', 'toolbar=no,height='+
screen.height/2 + ',width=' + screen.width/2);" />
```

If the configuration file does not contain a menuItem node with ID="GSMNavSpec" or a menuItem node with ID="toolbuttons", add them first as follows:

```
<MenuItem configChildKey="ID" IsInEditMode="{IsInEditMode}" ID="GSMNavSpec"
DisplayText="**GSM">
  <MenuItem configChildKey="ID" Visible="false" ID="toolbuttons">
  </MenuItem>
</MenuItem>
```

3. Add the following to Web/css/icons.css:

```
#ynavMenuToolbar #ynavToolButton-lblPPM
{
  background-image:url(../images/Action-PPM.png);
}
```

4. Make sure the icon (PPMIntegration\Install\Web\images\Action-PPM.png) is copied to P4P_Home\Web\images\Action-PPM.png

AgileIntegrationConfig.xml

1. Updates to \config\extenstions\AgileIntegrationConfig.xml:
 - a) Update the AgileServerUrl node to point to the A9 Server URL for this environment.

- b) If you are using an external authentication provider to login to A9 from PLM for Process, update the AgileCredentialsHandler node to the value:
"Class:PPM_Webservices.NullCredentialsHandler,PPM_Webservices"

Certificate Configuration

PPM needs to enable SSL in both PLM for Process and A9 9.3.4. There are two certificates needed on the PLM for Process server.

1. Certificate used by A9 when calling services of PLM for Process.
 - a) Create a self-signed certificate in IIS, please refer to [https://technet.microsoft.com/en-us/library/cc753127\(v=ws.10\).aspx](https://technet.microsoft.com/en-us/library/cc753127(v=ws.10).aspx) .
 - b) Export this certificate (without private key), and import this certificate on the A9 server using the keytool command.
 - c) Update the AgileSam1CertificateThumbprint node in AigleIntegrationConfig.xml with the new thumbprint of the certificate. See [https://msdn.microsoft.com/en-us/library/ms734695\(v=vs.110\).aspx](https://msdn.microsoft.com/en-us/library/ms734695(v=vs.110).aspx) for how to retrieve the thumbprint of a certificate.
2. Certificate used by PLM for Process when calling services of A9.
 - a) Import the self-signed certificate (with private key) in PLM for Process and make it exportable.
 - b) [Import this certificate into A9 using wssconfigurator](#).
 - c) Update the AgileSharedCertificateThumbprint node in AigleIntegrationConfig.xml with the thumbprint of the certificate.

A9 Configuration

Installing Hotfixes

Install the following hotfixes:

- Install Agile HF 9.3.3.144
- Install Agile HF 9.3.3.104
- Install Agile HF 9.3.3.121
- Install Agile HF 9.3.3.186

Setting up Reference Objects

You must use the Agile Java client Admin utility to configure reference objects.

Configuring the External Application

Under System Settings / Reference Object Management, create a new application with the following values:

Name	P4P
API Name	P4P
Description	PLM for Process
Port	{Port for P4P server}
Host Base URL	{P4P Web Server address}
Virtual Path	/Integration/PPMContracts
User ID	Leave blank
Password	Leave blank
Enabled	Yes
Include Id of Active User	Yes

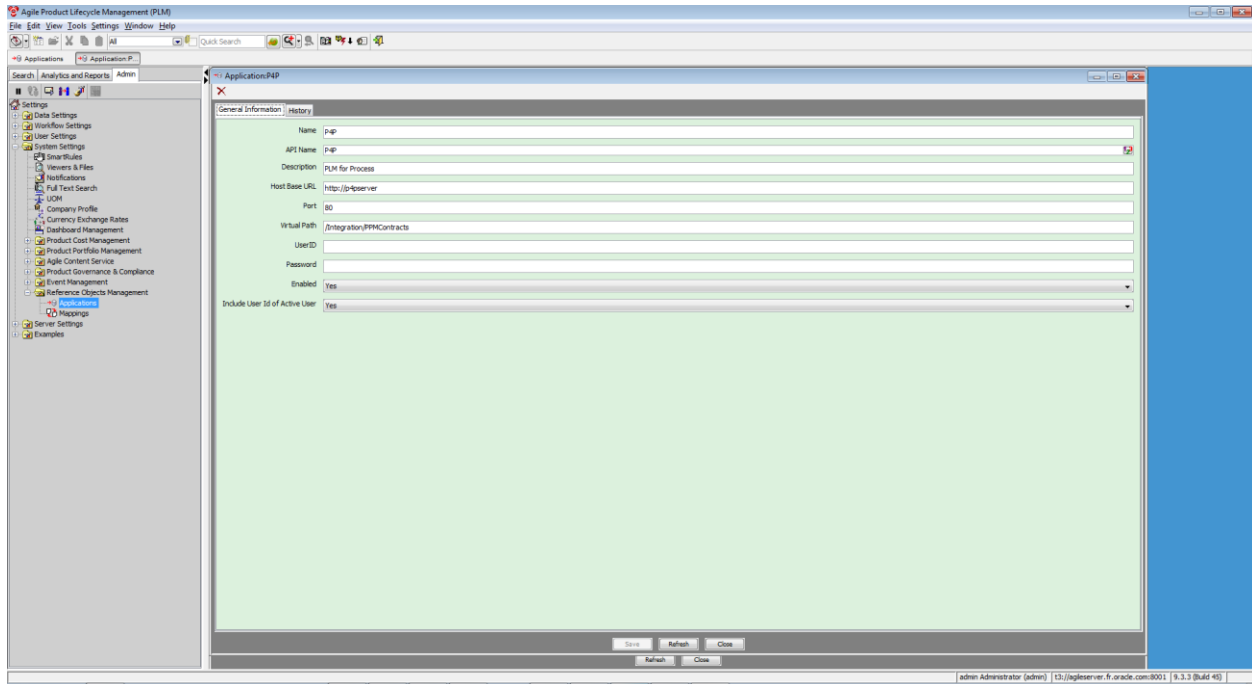


Figure 1. External application configuration

Creating Reference Object Subclasses for each Specification Type

Under Data Settings / Classes, add a new class of type Reference Object for each PLM for Process specification type that the integration supports.

PLM for Process Trade Specification

Name	P4P Trade Specification
API Name	P4PTradeSpec
Description	P4P Trade Spec
Enabled	True
Icon	2147-S.png
Application	P4P
Tokens	objectType=2147
Search Webservice	/ReferenceObjectService.svc
Quick View Webservice	/QuickViewReferenceObjectService.svc
Available On	Project;Task
Class	Reference objects

P4P Formulation Specification

Name	P4P Formulation Specification
API Name	P4PFormulationSpec
Description	P4P Formulation Spec
Enabled	True
Icon	5816-S.png
Application	P4P
Tokens	objectType=5816
Search Webservice	/ReferenceObjectService.svc
Quick View Webservice	/QuickViewReferenceObjectService.svc
Available On	Project;Task
Class	Reference objects

P4P Material Specification

Name	P4P Material Specification
API Name	P4PMaterialSpec
Description	P4P Material Spec
Enabled	True

Name	P4P Material Specification
Icon	1004-S.png
Application	P4P
Tokens	objectType= 1004
Search Webservice	/ReferenceObjectService.svc
Quick View Webservice	/QuickViewReferenceObjectService.svc
Available On	Project;Task
Class	Reference objects

P4P Packaging Specification

Name	P4P Packaging Specification
API Name	P4PPackagingSpec
Description	P4P Packaging Spec
Enabled	True
Icon	1009-S.png
Application	P4P
Tokens	objectType= 1009
Search Webservice	/ReferenceObjectService.svc
Quick View Webservice	/QuickViewReferenceObjectService.svc
Available On	Project;Task
Class	Reference objects

P4P Labeling Specification

Name	P4P Labeling Specification
API Name	P4PLabelingSpec
Description	P4P Labeling Spec
Enabled	True
Icon	1006-S.png
Application	P4P
Tokens	objectType= 1006
Search Webservice	/ReferenceObjectService.svc
Quick View Webservice	/QuickViewReferenceObjectService.svc
Available On	Project;Task
Class	Reference objects

P4P Master Specification

Name	P4P Master Specification
API Name	P4PMasterSpec
Description	P4P Master Spec
Enabled	True
Icon	1005-S.png
Application	P4P
Tokens	objectType= 1005
Search Webservice	/ReferenceObjectService.svc
Quick View Webservice	/QuickViewReferenceObjectService.svc
Available On	Project;Task
Class	Reference objects

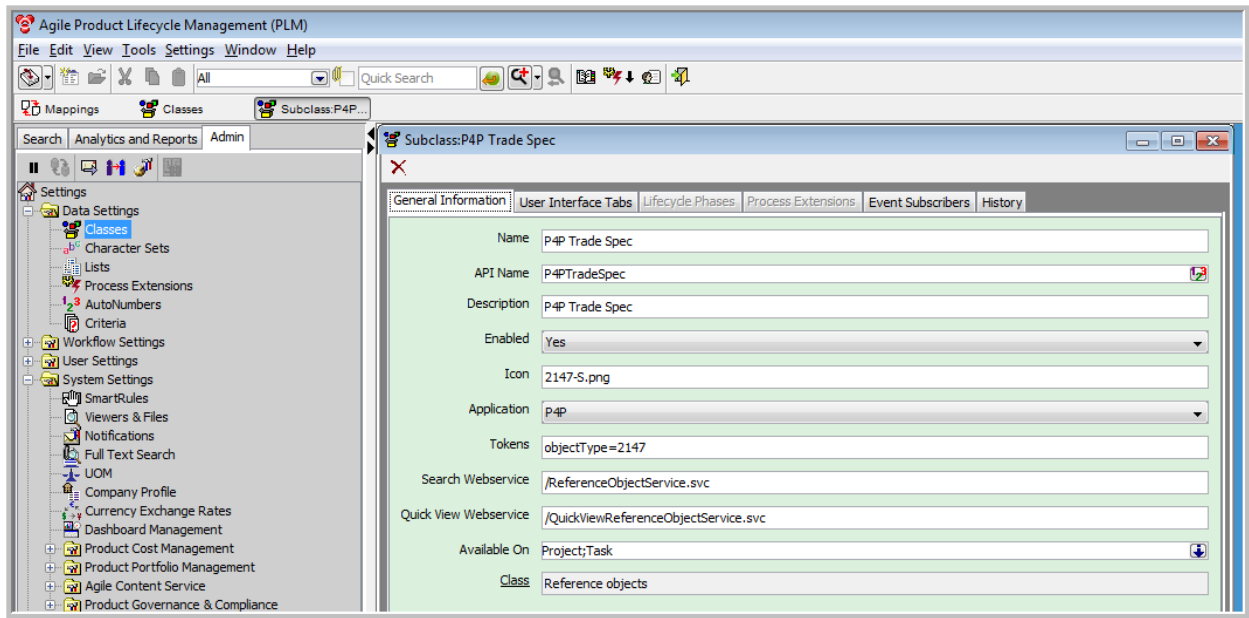


Figure 2. Subclass for trade specification

Configuring External Application Mappings

These settings control how data being returned from Search and Quick View web service calls against PLM for Process are mapped to their corresponding Agile reference object.

Under System Settings / Reference Object Management select **Mappings**. You must create these mappings for each reference object subclass you define.

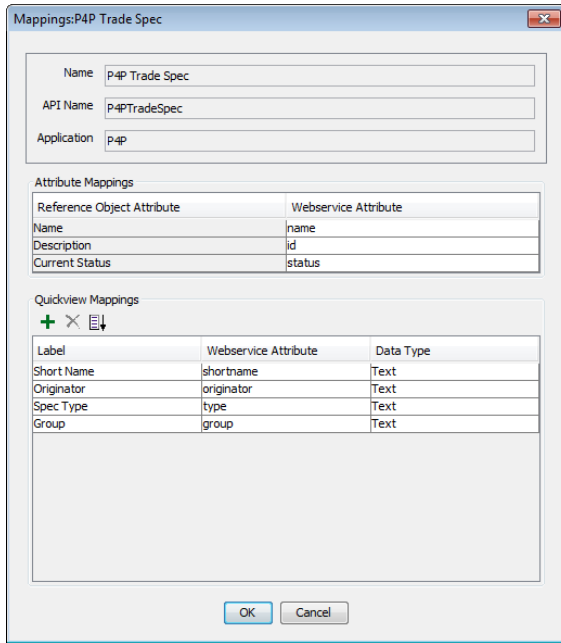


Figure 3. Mappings

Setting up Reference Object Permissions

First, under Data Settings / Criteria create a new criterion that returns all reference objects (if this criterion does not already exist).

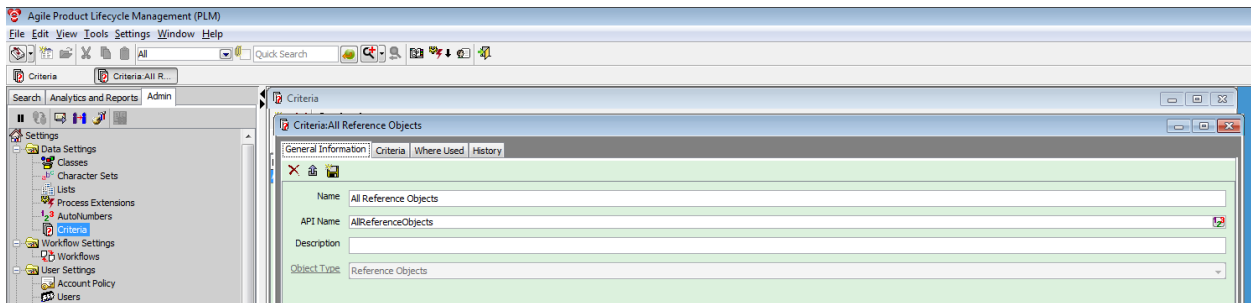


Figure 4. New Criterion

Next, under User Settings / Privileges, create the following privileges on Reference Objects (using the criterion defined in the previous step):

- Create
- Delete
- Discover

- Modify
- Read

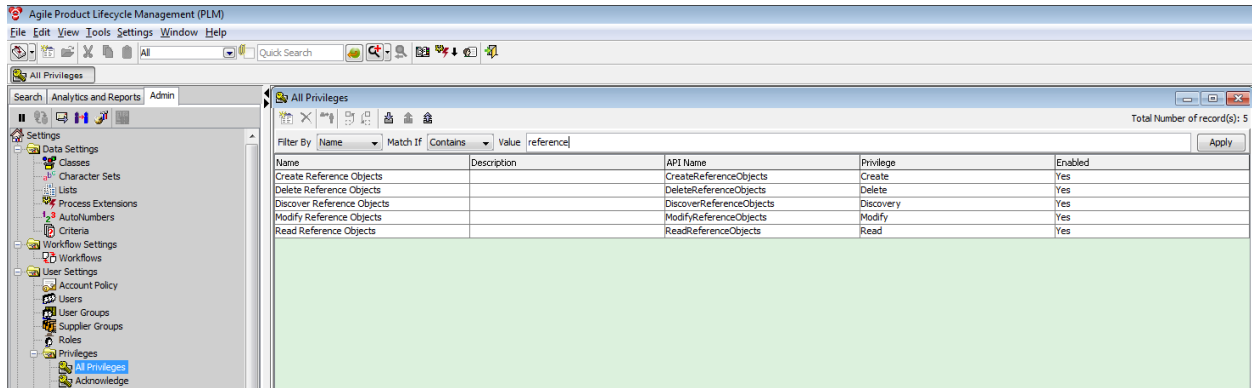


Figure 5. Privileges

Finally, assign these privileges to the users or groups that you want to have access to Reference Objects.

Adding Custom P4P Icons to Agile Server

In setting up the PLM for Process Reference Object subclasses we specified a number of .PNG files as custom icons to display in Agile PPM. The necessary PLM for Process icons can be found in the release package.

These need to be added to the Agile server as outlined in the *Agile Product Lifecycle Management Administrator Guide*:

1. Stop WebLogic.
2. For Web Client, place the custom graphic in the location
`\AGILE_HOME\agileDomain\applications\application.ear\application.war\images\`.
3. For Java Client, place the custom graphic in the location
`\AGILE_HOME\agileDomain\applications\application.ear\JavaClient.war\lib\images\custom.jar`.
4. Delete `\AGILE_HOME\agileDomain\servers\xxxx\`.
5. Restart WebLogic.

Certificate Configuration

1. Run agileDomain\tools\wssconfigurator\wssconfigurator.cmd.
2. Choose **4: To Manage OPSS OWSM keystore.**

```
Your environment has been set.

*****
*   Agile PLM Web Services Security Configurator   *
*****

Jython scans all the jar files it can find at first startup. Depending on the sy
stem, this process may take a few minutes to complete, and WLST may not return a
prompt right away.

Verifying Oracle Web Services Manager and Oracle Enterprise Manager are installe
d ...

[1] : To enable web service security
[2] : To disable web service security
[3] : To view web service security
[4] : To manage OPSS OWSM keystore
[5] : To Add Token Issuer

Please enter 1,2,3,4,5 to proceed the option:
4
```

Then, you need to input server url, userid and password.

3. After authenticate user, select **2: Import Trusted Certificate.**

```
Warning: An insecure protocol was used to connect to the
server. To ensure on-the-wire security, the SSL port or
Admin port should be used instead.

[1] : List All aliases
[2] : Import Trusted Certificate
[3] : Export Certificate
[4] : Renew Expiring Certificate
[5] : Export Demo CA Certificate
[6] : Exit

Please enter the option to proceed:
2
Please enter the alias to be imported [e.g. mykey]:
```

Then input the certificate location.

There are two certificates that need to be installed. One is for A9 invoking PLM for Process webservice and the other is for PLM for Process invoking A9 webservice. Both of these two certificates installed in A9 are without a private key.

Chapter 2—Using Agile Product Portfolio Management

Adding a P4P Specification from A9

You can add a PLM for Process specification as a reference object from an A9 project or task. The reference objects are available on the Content tab of the project or task. To search for a PLM for Process specification, click **Add** and select the Reference Objects. A popup window allows you to choose the specification type you want to search and enter search criteria.

You can search on specification name or specification number.

Double click on the search result row to add it to your A9 project or task.

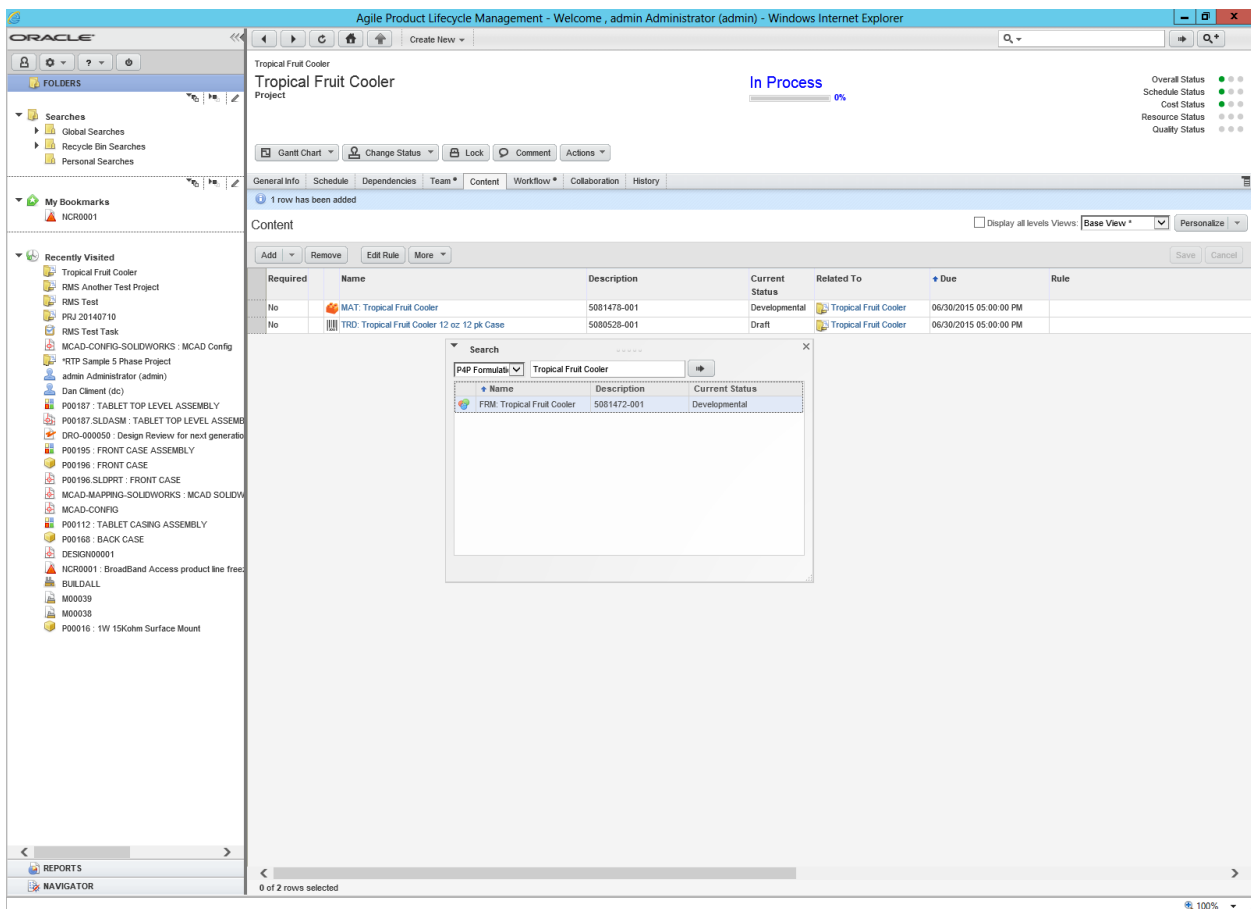


Figure 6. Adding a specification from A9

Viewing PLM for Process Specification Details in Quick View

Additional data about the PLM for Process specification can be viewed by using the Agile Quick View feature. Hold your cursor over the specification to open a Quick View tooltip. Click the Quick View link to launch a popup with the additional specification data.

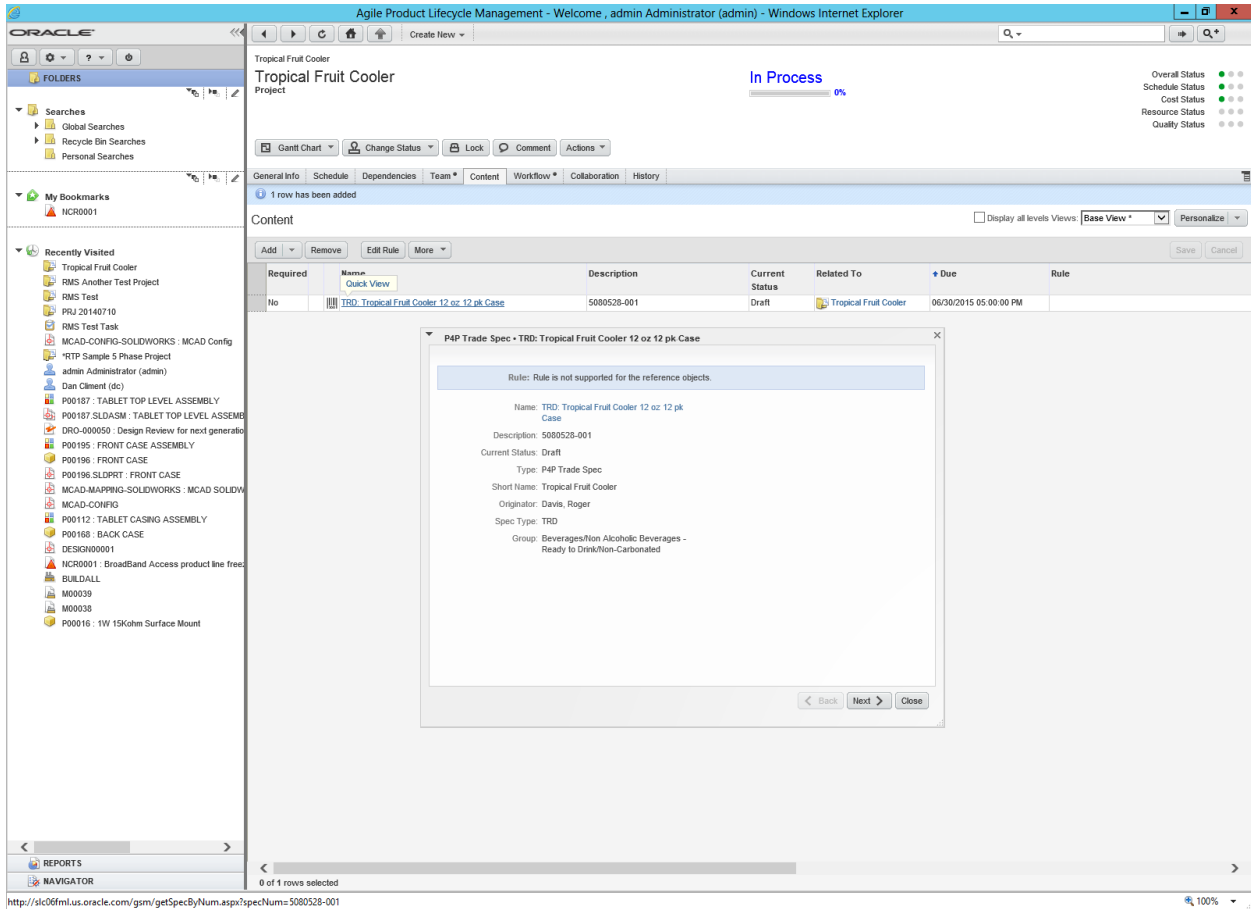


Figure 7. Quick View feature

Navigating to Specification from A9

Click the name of the PLM for Process specification in the A9 Content grid to launch a popup window that will open the specification in PLM for Process.

Viewing Linked A9 Projects and Tasks from P4P

If a PLM for Process specification is linked to an A9 project or task you can view those related A9 objects from within PLM for Process. There is a PPM tool button in the navigation bar at the top of the page when you are viewing a supported specification. Click this button to launch a popup window that will display the related A9 objects.

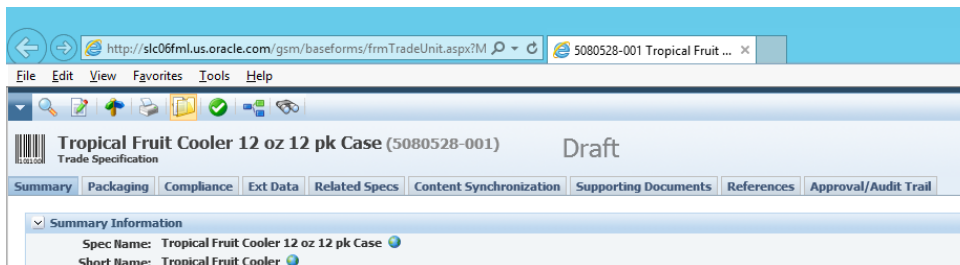
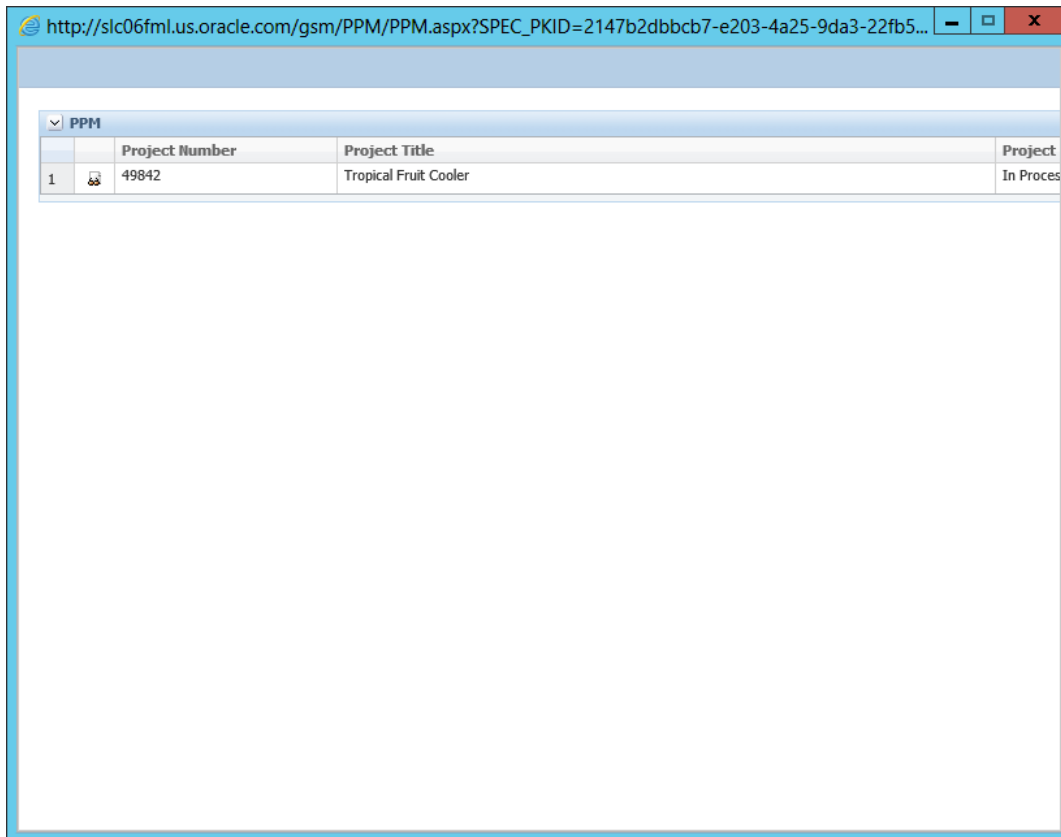


Figure 8. PPM tool button



The screenshot shows a web browser window with the URL `http://slc06fml.us.oracle.com/gsm/PPM/PPM.aspx?SPEC_PKID=2147b2dbbcb7-e203-4a25-9da3-22fb5...`. The browser displays a table with the following data:

PPM			
	Project Number	Project Title	Project
1	49842	Tropical Fruit Cooler	In Proces

Figure 9. Related object

Using Workflow Actions to Notify A9 of Changes to Linked PLM for Process Specifications

Information about updates to the PLM for Process specification may need to be sent to the related objects in A9. One mechanism for publishing these changes is through the P4P Workflow Action.

Workflow actions are an extensibility point that trigger the execution of classes when a workflow transition occurs. The classes can access the item being workflowed to execute specialized actions programmatically. These classes are made available for selection as workflow actions by including them in the `config\Extensions\CustomWFAExtensionsConfig.xml` file.

This is described in the *Agile Product Lifecycle Management for Process Administrator User Guide*.

The PPM Integration Feature Pack includes a simple workflow action that uses the A9 web service API to update the PLM for Process reference object name and status. You can configure the workflow action to execute upon any (or all) workflow transitions for a specification.

To make the PPM Integration workflow action available, add the following to the “WorkflowActionTemplates” node in `config\Extensions\CustomWFAExtensionsConfig.xml`:

```
<WorkflowAction processTemplateTypes="GSM" name="UpdateRefObject"  
FactoryURL="Class:PPM_Webservices.WorkflowActions.UpdateRefObjectWorkflowAction,PPM_Web  
services" />
```

Next, add the Workflow Action to any Workflow transitions as described in the *Agile Product Lifecycle Management for Process Administrator User Guide*.

See the “Workflow Actions and Guard Conditions for WFA” document in the Feature Pack Reference Implementations\ WorkflowActions\Documentation directory for details about creating and configuring custom workflow actions.

Appendix A—Files to Add for Installation

This appendix lists the new files added in the "Adding New Files to Web Application Folders and Config" described in [Adding New Files to Web Application Folders and Config](#) on [page 9](#).

P4P_Home\Config\Extensions\AgileIntegrationConfig.xml

P4P_Home\Web\gsm\bin\PPM_UIExtensions.dll

P4P_Home\Web\gsm\bin\PPM_WebServices.dll

P4P_Home\Web\gsm\PPM\PPM.aspx

P4P_Home\Web\gsm\PPM\PPMSearch.aspx

P4P_Home\Web\gsm\PPM\Web.config

P4P_Home\Web\integration\Contracts\PPM\bin\PPM_WebServices.dll

P4P_Home\Web\integration\Contracts\PPM\LinkedProjectsService.svc

P4P_Home\Web\integration\Contracts\PPM\ManageAgileReferenceObjectService.svc

P4P_Home\Web\integration\Contracts\PPM\QuickViewReferenceObjectService.svc

P4P_Home\Web\integration\Contracts\PPM\ReferenceObjectService.svc

P4P_Home\Web\integration\Contracts\PPM\SearchAgileObjectsService.svc

P4P_Home\Web\integration\Contracts\PPM\QuickViewReferenceObject.wsdl

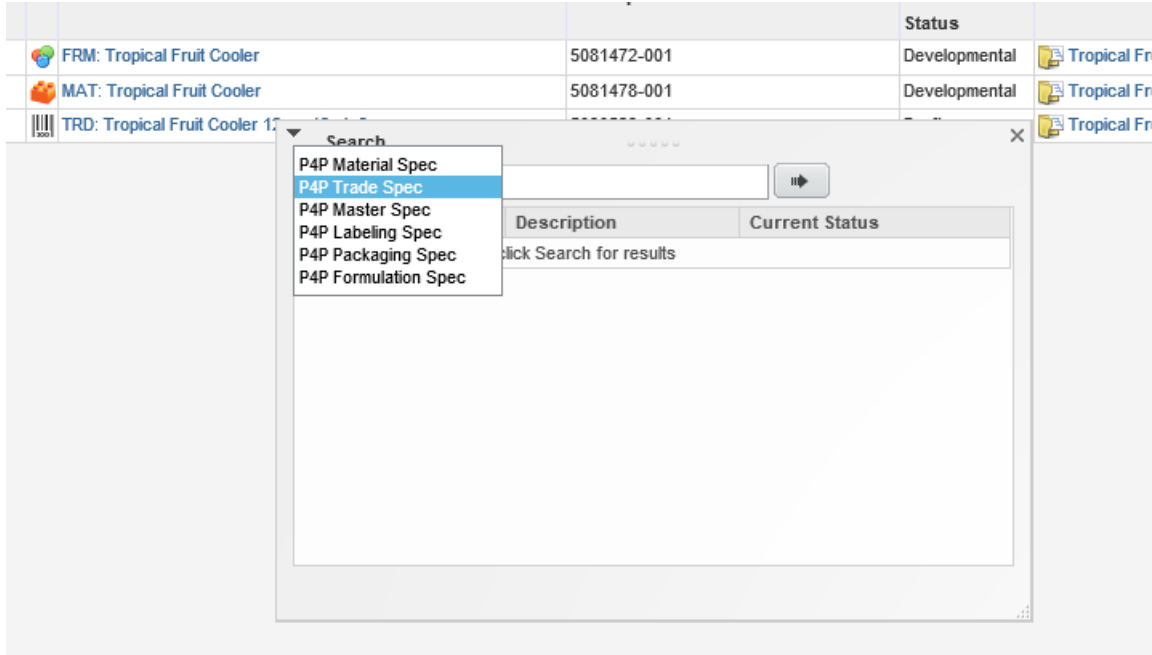
P4P_Home\Web\integration\Contracts\PPM\SearchReferenceObject.wsdl

P4P_Home\Web\integration\Contracts\PPM\ReferenceObjectSchema.xsd

P4P_Home\Web\integration\Contracts\PPM\Web.config

Appendix B—Troubleshooting

- If A9 encounters an error searching for a PLM for Process specification, there is not an error indicator. The popup window will simply show no results and may appear to be still running.



- Verify that the A9 server can access the PLM for Process web services using a web service client (such as SOAP UI) from the A9 server.
- Verify that the PLM for Process server can access the A9 web services with the same approach.
- PLM for Process Web Service URLs:
 - <http://{P4PServer}/Integration/PPMContracts/ReferenceObjectService.svc>
 - <http://{P4PServer}/Integration/PPMContracts/QuickViewReferenceObjectService.svc>
- A9 Web Service URLs:
 - <http://{A9Server}/CoreService/services/BusinessObject>
- Turn on WCF Tracing on the PLM for Process server to view inbound and outbound web service calls.
 - <https://msdn.microsoft.com/en-us/library/ms733025%28v=vs.110%29.aspx>
- Enable this in the /web/Integration/PPMContracts/web.config for inbound calls to the PLM for Process server.

- Enable this in the /web/gsm/Web.config for outbound calls to the A9 server.
- You can copy the raw message to test with a SOAP client.
- Log will include stack traces and more detailed error messages.

