

FLEXCUBE Information Server Utility
Oracle FLEXCUBE Universal Banking
Release 12.1.0.0.0
[October] [2015]



Table of Contents

- 1. FIS UTILITY 1-1
 - 1.1 INTRODUCTION 1-1
 - 1.2 SETTING UP FIS UTILITY 1-1

1.1 Introduction

This chapter explains the steps to set up the Flexcube Information Server Utility using Oracle FLEXCUBE Universal Banking Installer.

FLEXCUBE Information Server is Data warehouse Solution for Financial Systems.

As this is a Data warehouse solution there are two schemas as follow:

- 1) Source schema = FLEXCUBE Schema
- 2) Target Schema = FLEXCUBE Information Server schema

Note:

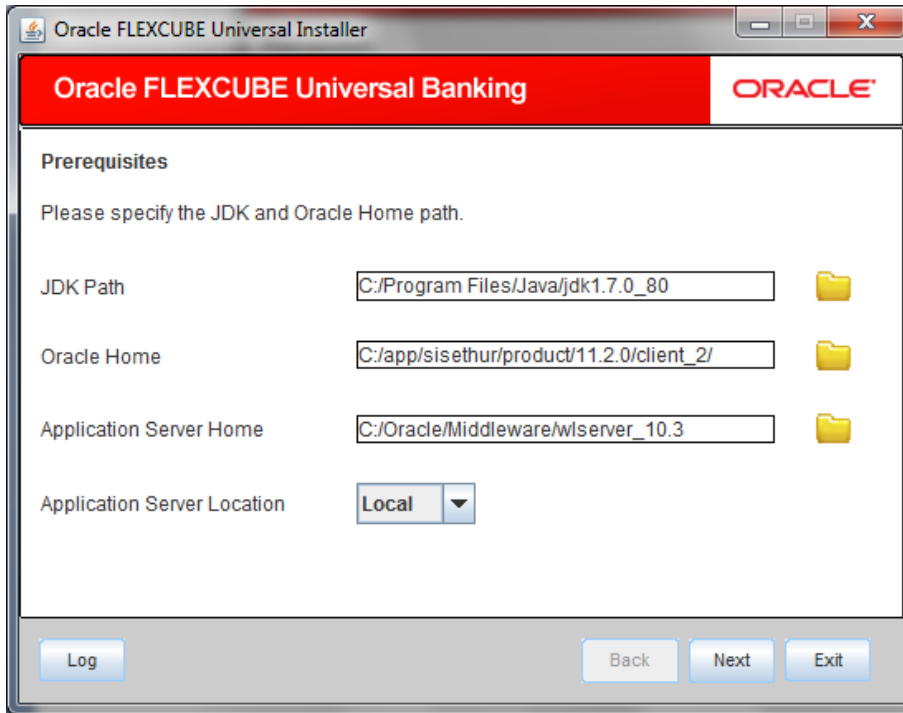
- From here FLEXCUBE Schema will be referred as Source schema and FLEXCUBE Information Server Schema will be referred as Target Schema for Data warehouse solution.
- Prerequisite for FLEXCUBE information Server schema if it is on different database:

Special grants will be required for this type of FLEXCUBE Information Server as follow:

- 1) EXECUTE on DBMS_FILE_TRANSFER
- 2) EXECUTE ON SYS.DBMS_DATAPUMP

1.2 Setting up FIS Utility

1. Start Oracle FLEXCUBE Universal Banking Installer.



2. Specify the following details:

JDK Path

Specify the location of the JDK. You can use the directory button to browse to the JDK location.

Oracle Home

Specify the location of the Oracle Home installation. You can use the directory button to browse to the location.

Application Server Home

Specify the location of the application server.

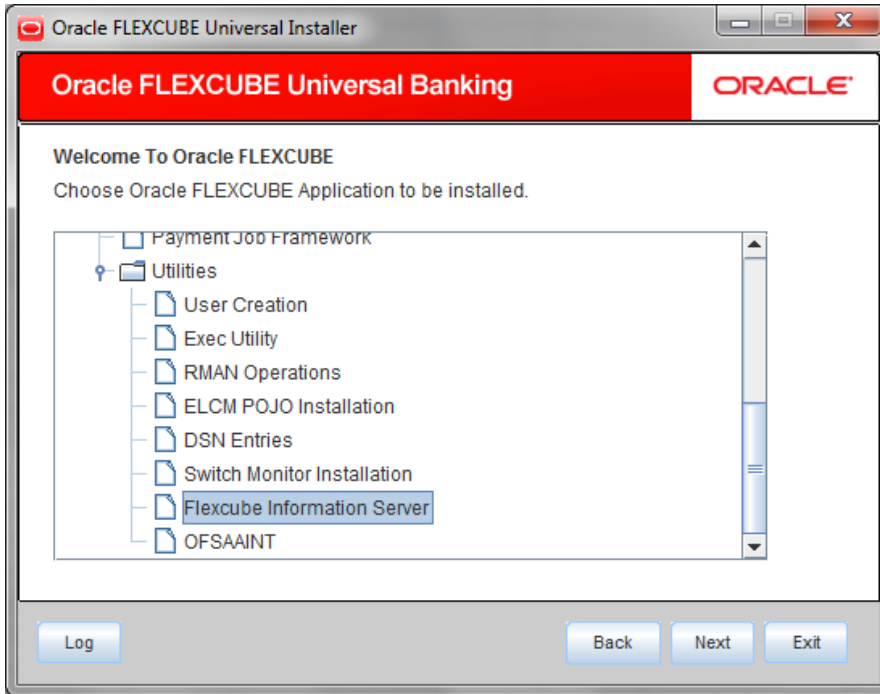
Application Server Location

Specify whether application server is local or remote.



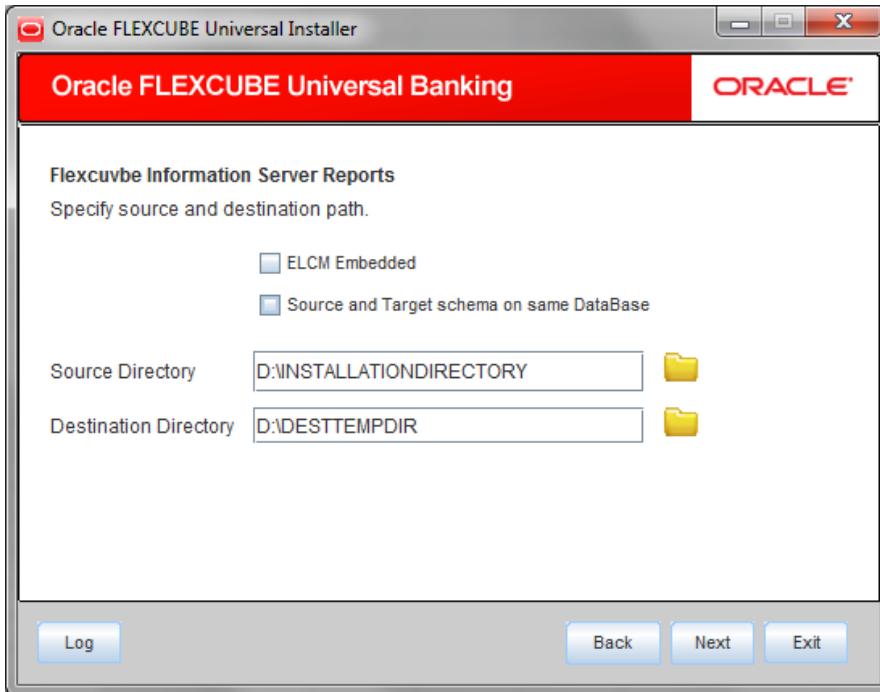
In case any of the selected directories is incorrect, the Installer will display an appropriate error message. In that case, you need to correct the directory path and proceed.

3. Click 'Next'. The following screen is displayed.



4. Select 'Flexcube Information Server' and click 'Next'.

The following screen is displayed.



Specify the following details:


ELCM Embedded:

Tick check box if ELCM is embedded.


Source and Target Schema on Same DataBase:

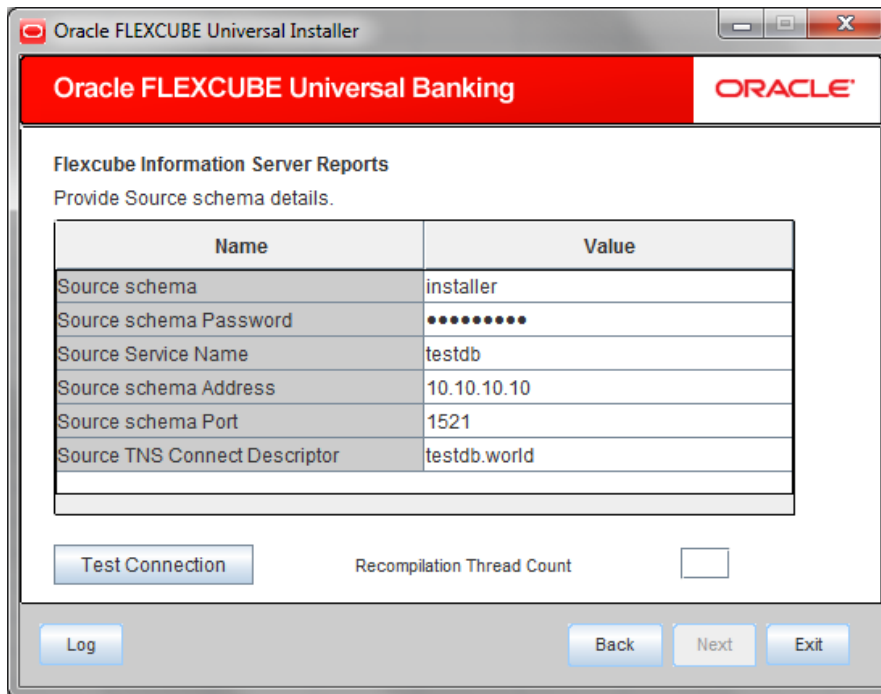
Mark check box available on the screen above, if FLEXCUBE and FLEXCUBE Information Server need to install on the same database.

Source Directory

Specify the Source directory. Use the directory icon  to browse the source directory.

Destination Directory

Specify the destination directory. Use the directory icon  to browse the destination directory.



The screenshot shows the Oracle FLEXCUBE Universal Installer window. The title bar reads "Oracle FLEXCUBE Universal Installer". The main window has a red header with "Oracle FLEXCUBE Universal Banking" and the Oracle logo. Below the header, the text "Flexcube Information Server Reports" is displayed, followed by "Provide Source schema details." A table with two columns, "Name" and "Value", contains the following information:

Name	Value
Source schema	installer
Source schema Password	••••••••
Source Service Name	testdb
Source schema Address	10.10.10.10
Source schema Port	1521
Source TNS Connect Descriptor	testdb.world

Below the table, there is a "Test Connection" button, a "Recompilation Thread Count" label, and an empty input box. At the bottom of the window, there are "Log", "Back", "Next", and "Exit" buttons.

5. Specify the following schema details:

Source Schema

Specify the user name to access the schema.

Source Schema Password

Specify the schema password.

Source Service Name

Specify the service name of database.

Source TNS Connect Descriptor

Specify a valid connect string that contains the details for database connectivity.

Source Schema Address

Specify the IP address of the system where the database schema is installed.


Source Schema Port

Specify the port number.

Recompilation Thread count:

Specify Thread count for recompilation.

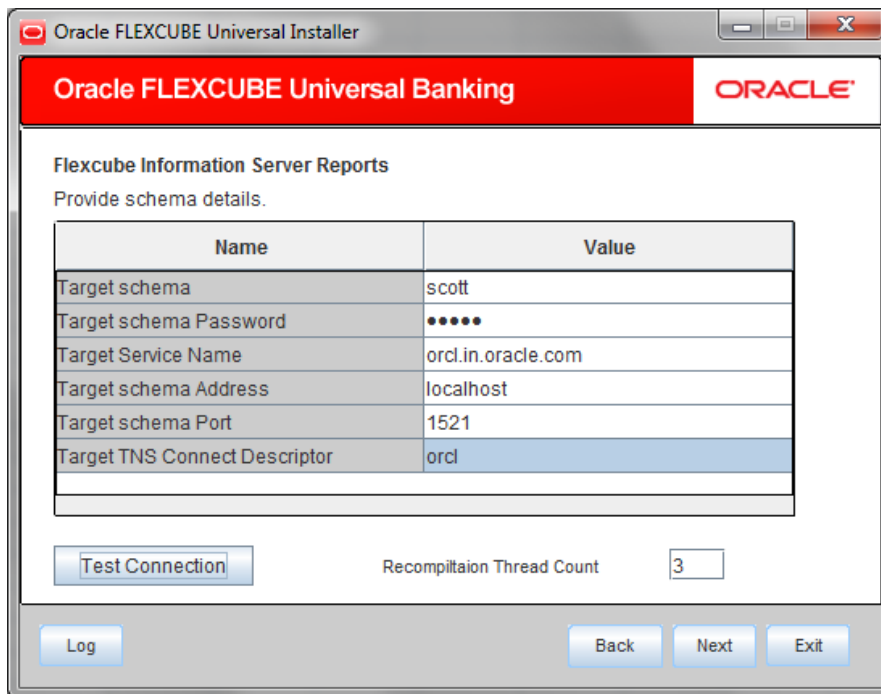
6. Once you have entered the details, you can test the database schema connection using 'Test Connection' button.

 Note the following:

- If the connection is established, the installer displays a message 'Connection Successful'.
- If there is an error in establishing the connection, the system displays the message 'Invalid DB Credentials'.

If the TNS entry is not proper, the installer displays the message 'TNS entries are not proper'.

7. After testing the connection successfully, click 'Next'. The following screen is displayed.



The screenshot shows the Oracle FLEXCUBE Universal Installer window. The title bar reads "Oracle FLEXCUBE Universal Installer". The main window has a red header with "Oracle FLEXCUBE Universal Banking" and the ORACLE logo. Below the header, the text "Flexcube Information Server Reports" and "Provide schema details." is displayed. A table with two columns, "Name" and "Value", contains the following data:

Name	Value
Target schema	scott
Target schema Password	*****
Target Service Name	orcl.in.oracle.com
Target schema Address	localhost
Target schema Port	1521
Target TNS Connect Descriptor	orcl

Below the table, there is a "Test Connection" button, a "Recompilaion Thread Count" label, and a text box containing the number "3". At the bottom of the window, there are "Log", "Back", "Next", and "Exit" buttons.

8. Specify the following schema details:

Target Schema

Specify the user name to access the schema.

Target Schema Password

Specify the schema password.

Target Service Name

Specify the service name of database.

Target TNS Connect Descriptor

Specify a valid connect string that contains the details for database connectivity.

Target Schema Address

Specify the IP address of the system where the database schema is installed.

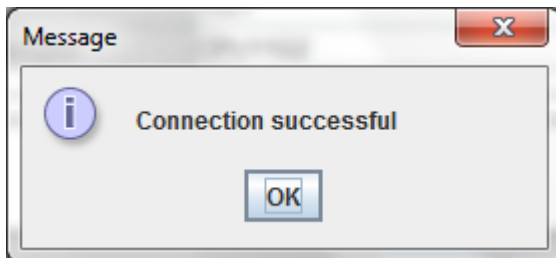
Target Schema Port

Specify the port number. Once you have entered the details, you can test the database schema connection using 'Test Connection' button

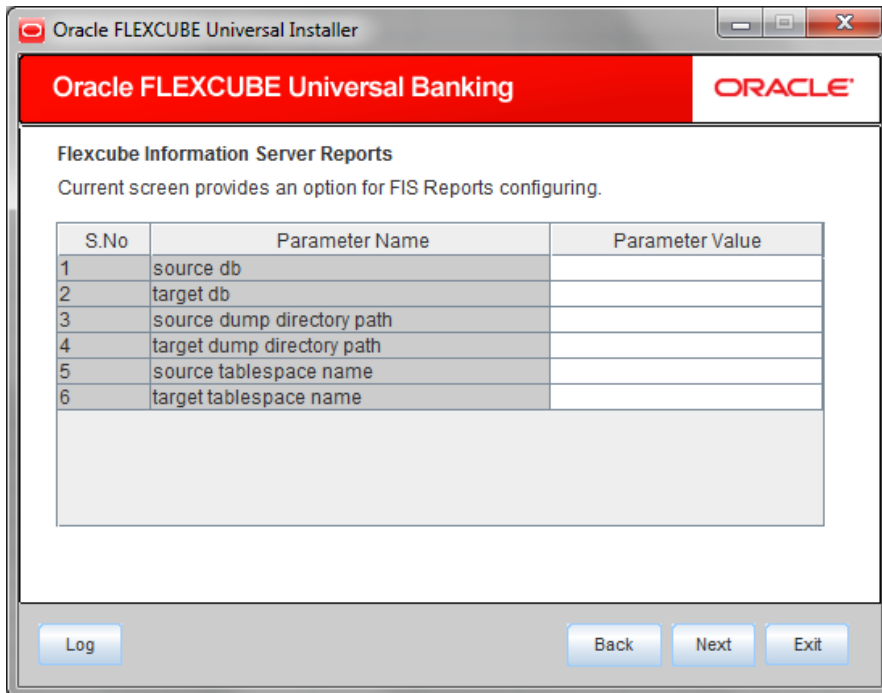
Recompilation Thread count:

Specify Thread count for recompilation.

Click Test Connection



After testing the connection successfully, click 'Next' and the following screen is displayed:



9. Specify the following schema details:

Source DB

Specify the source DB. This is required for target schema for communicating with Source schema.

Target DB

Specify the target DB. This is required for Source schema for communicating with target schema.

Source dump directory path

Specify the location for source dump where a new database directory for dump of source schema will be created.

Target dump directory path

Specify the location for target dump where a new database directory for dump of source schema will be placed for FLEXCUBE Information Server.

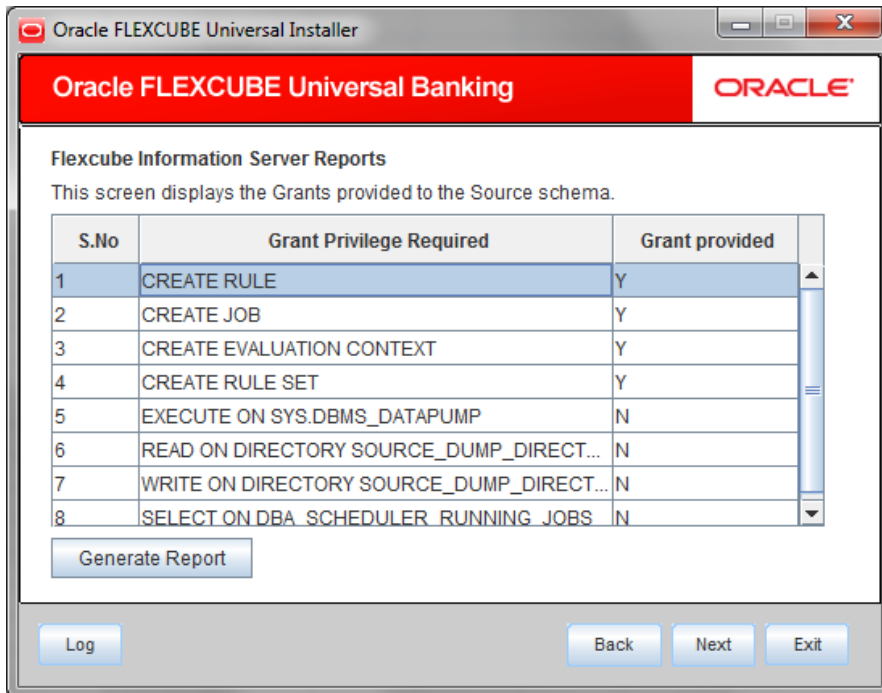
Source tablespace name

Specify the tablespace name for the source. This is needed when Target schema is on Different database than that of Source schema for remapping schema dump for import.

Target tablespace name

Specify the tablespace name for the target. This is needed when Target schema is on Different database than that of Source schema for remapping schema dump for import.

10. Click 'Next' and the following message is displayed:



This screen displays the grants provided to the Source schema. If object compilation is required and the privilege is not given, then you can find that out from this screen.

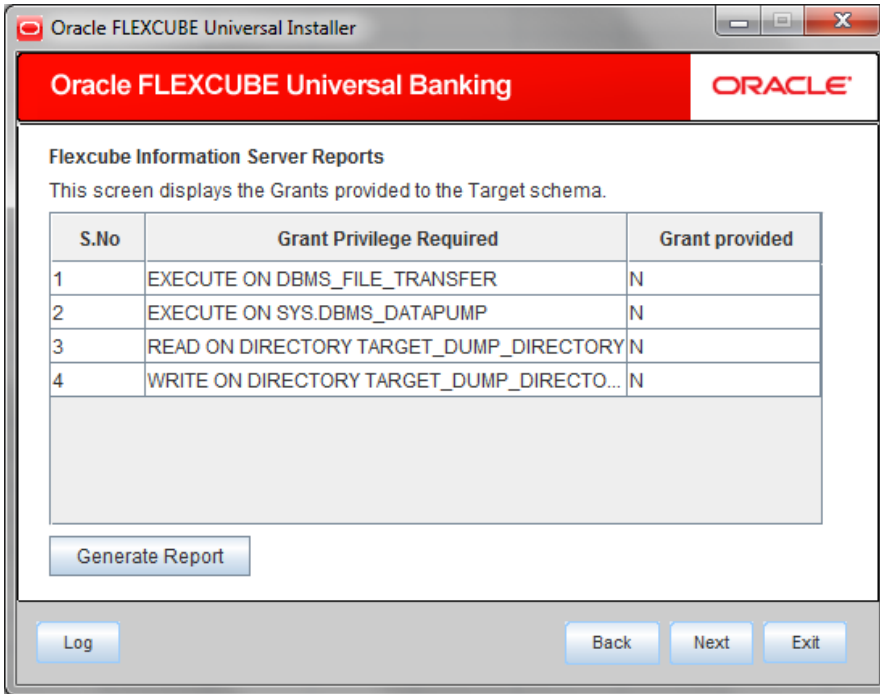
11. Click 'Generate Report' button, the installer creates an SQL file 'grantScript.sql' containing the script for granting the privileges in the 'Logs' folder and the following screen is displayed

You can use this file to get the access.



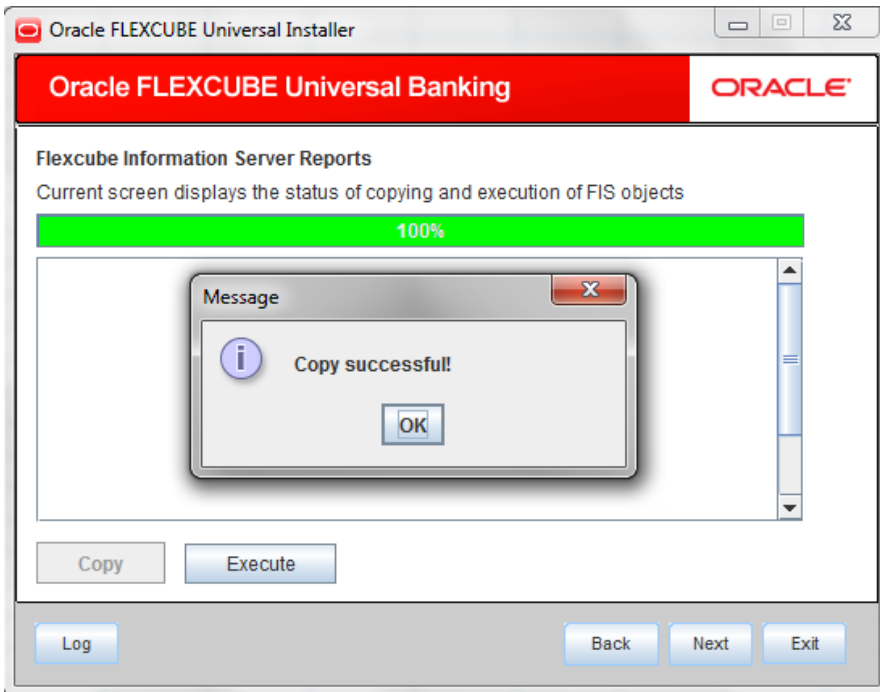
Only the sys user can execute the file 'grantScript.sql' for granting privileges.

12. Click 'Next' and the following message is displayed:

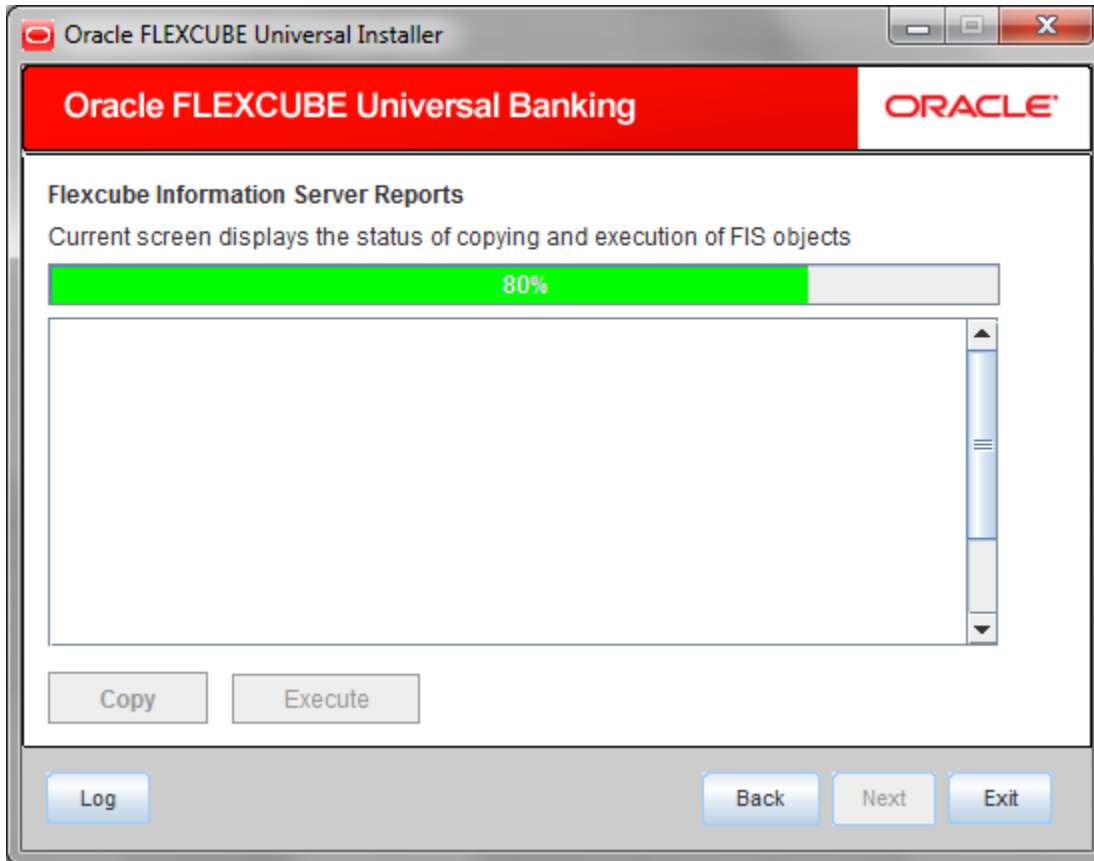


This screen displays the grants required for the Target schema and their availability.

13. Click 'Next' and the following message is displayed:



14. Click Copy. The Installer will copy the source files (scripts and the database objects) from the source directory to the destination directory. The files are taken from this location for compilation.
15. Click Execute.



16. It compiles all the db objects into the database and executes the scripts.

STOP Note:

Following script has to be executed in Source schema before executing EOD/Intraday Batch for the first time.

This script will mark the branch for which all Extraction and Transformation packages should be referred as reference point. Normally it should be Head-Office Branch.



FIS_POST_INSTALL_
BRANCH_SETUP.sql



FIS Utility
[October] [2015]
Version 12.1.0.0.0

Oracle Financial Services Software Limited
Oracle Park
Off Western Express Highway
Goregaon (East)
Mumbai, Maharashtra 400 063
India

Worldwide Inquiries:
Phone: +91 22 6718 3000
Fax: +91 22 6718 3001
www.oracle.com/financialservices/

Copyright © [2007], [2015], Oracle and/or its affiliates. All rights reserved.

Oracle and Java are registered trademarks of Oracle and/or its affiliates. Other names may be trademarks of their respective owners.

U.S. GOVERNMENT END USERS: Oracle programs, including any operating system, integrated software, any programs installed on the hardware, and/or documentation, delivered to U.S. Government end users are "commercial computer software" pursuant to the applicable Federal Acquisition Regulation and agency-specific supplemental regulations. As such, use, duplication, disclosure, modification, and adaptation of the programs, including any operating system, integrated software, any programs installed on the hardware, and/or documentation, shall be subject to license terms and license restrictions applicable to the programs. No other rights are granted to the U.S. Government.

This software or hardware is developed for general use in a variety of information management applications. It is not developed or intended for use in any inherently dangerous applications, including applications that may create a risk of personal injury. If you use this software or hardware in dangerous applications, then you shall be responsible to take all appropriate failsafe, backup, redundancy, and other measures to ensure its safe use. Oracle Corporation and its affiliates disclaim any liability for any damages caused by use of this software or hardware in dangerous applications.

This software and related documentation are provided under a license agreement containing restrictions on use and disclosure and are protected by intellectual property laws. Except as expressly permitted in your license agreement or allowed by law, you may not use, copy, reproduce, translate, broadcast, modify, license, transmit, distribute, exhibit, perform, publish or display any part, in any form, or by any means. Reverse engineering, disassembly, or decompilation of this software, unless required by law for interoperability, is prohibited.

The information contained herein is subject to change without notice and is not warranted to be error-free. If you find any errors, please report them to us in writing.

This software or hardware and documentation may provide access to or information on content, products and services from third parties. Oracle Corporation and its affiliates are not responsible for and expressly disclaim all warranties of any kind with respect to third-party content, products, and services. Oracle Corporation and its affiliates will not be responsible for any loss, costs, or damages incurred due to your access to or use of third-party content, products, or services.