



# Release Notes

## EDACONnect LibSync V3.4.0

Oracle Part Number: E61763-02



**Copyright © 2015 Perception Software  
All Rights Reserved**

This document contains information that is confidential and proprietary to Perception Software, Inc. This information is supplied for identification, maintenance, evaluation, engineering, and inspection purposes only, and shall not be duplicated or disclosed without prior written permission from an authorized representative of Perception Software. This document and any other confidential information shall not be released to any third party without a valid non-disclosure agreement signed by the third party and an authorized Perception Software representative. In accepting this document, the recipient agrees to make every reasonable effort to prevent the unauthorized use of this information.

EDAConnect Designer Version: 3.4.0  
March 2015

# Introduction

This document describes enhancements and new features in the current release of EDAConnect LibSync. Version 3.4.0 contains new features and enhancements including:

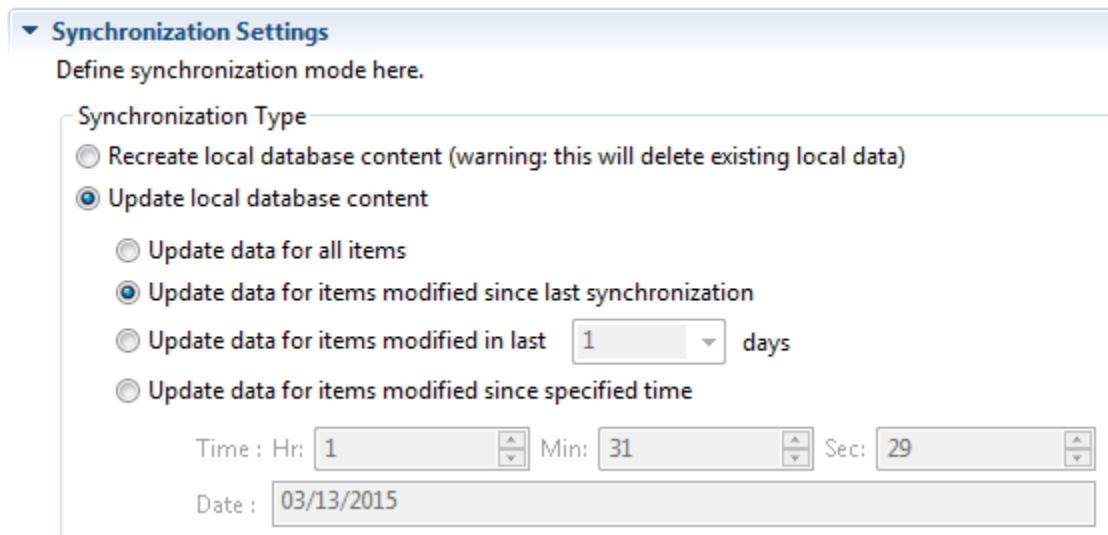
- Incremental synchronization through defined Agile event handlers.
- Advanced debug logging
- URL configuration for view to Agile Part Details, Agile MPN Details, AgileXplorer details.
- High-performance navigation, search and discovery for all your component data via new AgileXPLOER technology.

## New LibSync Features

### Event Based Synchronization

Perception has written a Process Extension (PX) that will update a Page Two.Modification Date attribute when a Libsync focus parts are created or updated.

This configuration works with Update option within the Synchronization Settings in the Libsync configuration file (.psm).

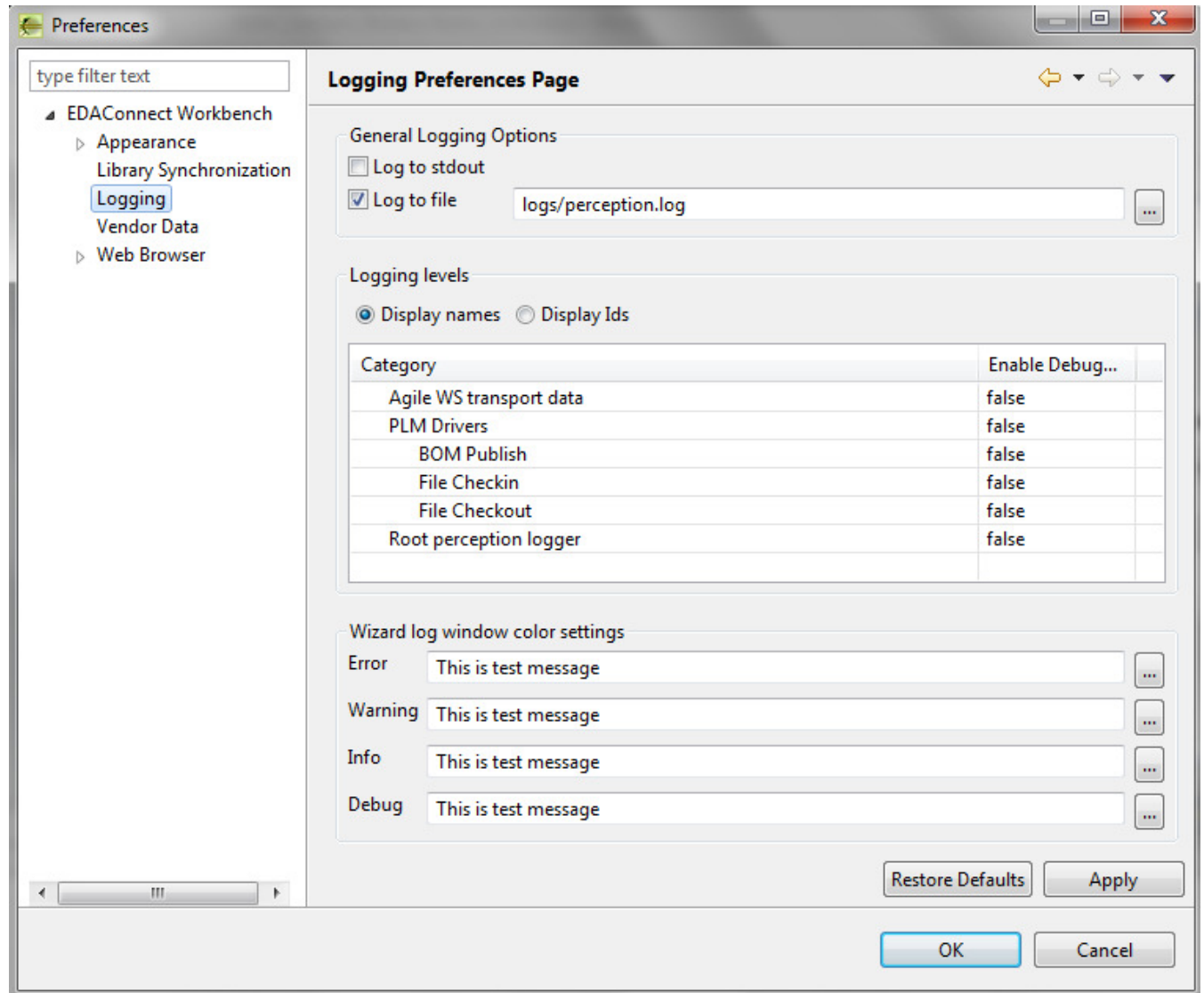


The screenshot shows a configuration window titled "Synchronization Settings" with a subtitle "Define synchronization mode here." Under the "Synchronization Type" section, there are five radio button options: "Recreate local database content (warning: this will delete existing local data)", "Update local database content" (which is selected), "Update data for all items", "Update data for items modified since last synchronization" (which is also selected), and "Update data for items modified in last 1 days" (where "1" is in a dropdown menu). Below these options are input fields for "Time : Hr: 1", "Min: 31", "Sec: 29", and "Date : 03/13/2015".

# Debug Logging

The LibSync preferences form now includes the option to enable DEBUG logging in the log file. Go to Window > Preferences > EDAConnect Workbench > Logging to update the settings.

Use the color settings to color code messages send to the LibSync console window.

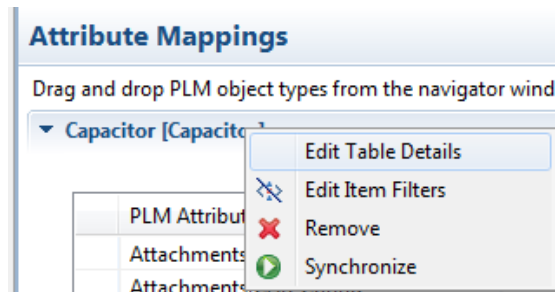


# Part View URLs

With version 3.4 you are now able to configure URL links fields.

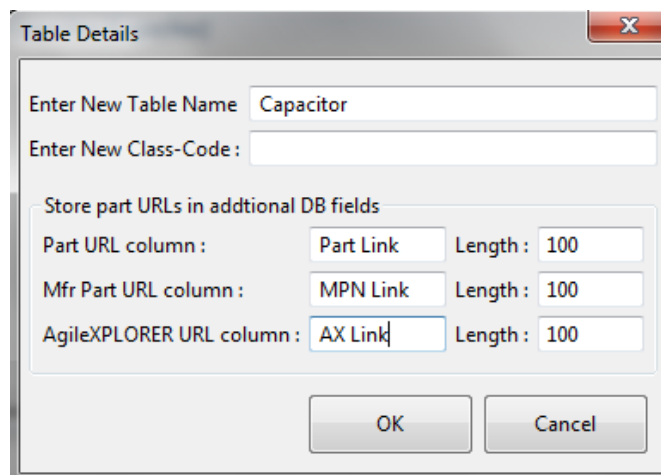
Here are the instructions to setup these links.

- Use the **File > Open** menu to open a mapping file (.psm) in Libsync
- Click on the **Mappings** tab to display all the Agile class that will be part of the synchronization.
- Place your cursor over the *<Agile Class> [<Table Name>]* heading and click the right mouse button to access the context sensitive menu.
- Click on **Edit Table Details**.



- From the *Table Details* form specify a database field name for the URLs (e.g. Part Link). There are 3 URL options:

<b>Part URL column</b>	This will create a field in the database whose value is a link that will launch the Agile web client focused on the Agile Part Number for that database part.
<b>Mfr Part URL column</b>	This will create a field in the database whose value is a link that will launch the Agile web client focused on the Manufacture part related to that database part.
<b>AgileXPLORESER URL column</b>	This will create a field in the database whose value is a link that will launch the AgileXPLORESER focused on the Agile Part Number for that database part.



# Agile Explorer

With version 3.4 Perception Software introduces AgileXPLOER which simplifies the search, navigation and discovery process without having to know exactly what you are looking for. This high-performance search and discovery solution is easy enough to use that both business and technical users will find significant value in its capabilities.

- Sub-second Search, Navigation and Discovery of product part data in Agile PLM
- Offers an Amazon-like user experience purpose built for the product decision makers
- Easy to use interface along with guided navigation, parametric search, successive refinement

Visit our website for more details, <https://www.perceptionsoftware.com/agileexplorer/>