

MICROS Materials Control

Remote Update



Product Version **8.7.20.36.1421**

Document Title:	Remote Update
Author:	Joerg Trommeschlaeger
Department:	Materials Control
Date:	19.09.2012
Version No. of Document:	1.1

Copyright © 2015, Oracle and/or its affiliates. All rights reserved.

This software and related documentation are provided under a license agreement containing restrictions on use and disclosure and are protected by intellectual property laws. Except as expressly permitted in your license agreement or allowed by law, you may not use, copy, reproduce, translate, broadcast, modify, license, transmit, distribute, exhibit, perform, publish, or display any part, in any form, or by any means. Reverse engineering, disassembly, or decompilation of this software, unless required by law for interoperability, is prohibited.

The information contained herein is subject to change without notice and is not warranted to be error-free. If you find any errors, please report them to us in writing.

If this software or related documentation is delivered to the U.S. Government or anyone licensing it on behalf of the U.S. Government, then the following notice is applicable:

U.S. GOVERNMENT END USERS: Oracle programs, including any operating system, integrated software, any programs installed on the hardware, and/or documentation, delivered to U.S. Government end users are "commercial computer software" pursuant to the applicable Federal Acquisition Regulation and agency-specific supplemental regulations. As such, use, duplication, disclosure, modification, and adaptation of the programs, including any operating system, integrated software, any programs installed on the hardware, and/or documentation, shall be subject to license terms and license restrictions applicable to the programs. No other rights are granted to the U.S. Government.

This software or hardware is developed for general use in a variety of information management applications. It is not developed or intended for use in any inherently dangerous applications, including applications that may create a risk of personal injury. If you use this software or hardware in dangerous applications, then you shall be responsible to take all appropriate fail-safe, backup, redundancy, and other measures to ensure its safe use. Oracle Corporation and its affiliates disclaim any liability for any damages caused by use of this software or hardware in dangerous applications.

Oracle and Java are registered trademarks of Oracle and/or its affiliates. Other names may be trademarks of their respective owners.

Intel and Intel Xeon are trademarks or registered trademarks of Intel Corporation. All SPARC trademarks are used under license and are trademarks or registered trademarks of SPARC International, Inc. AMD, Opteron, the AMD logo, and the AMD Opteron logo are trademarks or registered trademarks of Advanced Micro Devices. UNIX is a registered trademark of The Open Group.

This software or hardware and documentation may provide access to or information about content, products, and services from third parties. Oracle Corporation and its affiliates are not responsible for and expressly disclaim all warranties of any kind with respect to third-party content, products, and services unless otherwise set forth in an applicable agreement between you and Oracle. Oracle Corporation and its affiliates will not be responsible for any loss, costs, or damages incurred due to your access to or use of third-party content, products, or services, except as set forth in an applicable agreement between you and Oracle.

Table of Contents

INTRODUCTION	4
UPDATE PROCESS:	4
PREPARATION OF INSTALL SET:	5
CUSTOMIZED FILES:.....	5
MAIN APPLICATION UPDATE:	5
REMOTE UPDATE SETUP PREPARATION:	6
JANINST.INI:	7
SETUP.INI:	7
DATABASE UPDATE:	10
REMOTE UPDATE ACTIVATION:	11
REMOTE UPDATE EXECUTION:.....	13
REMOTE UPDATE < 8.7.20.XX WARNING	15

Introduction

This document will explain the configuration for automated updates of already installed Materials Control clients. This will ensure that, after a database update, each user will work with the most actual application only

To use the Remote Update features the “Full” build only should be used. This allows to use all features available.

This automated process can be used from version 8.6.6.10.xx and higher only!

All installations older than 8.6.6.10.xx must be updated manually.

Update Process:

1. Preparation of Install Set for first client update
2. Update of one workstation (Master PC) with the new application files.
3. Now the setup for the other remaining client installations should be prepared and copied to a network location accessible for all other PCs.
4. On the Master PC now start the already updated application.
Go to System > Database Update. Run the functions “Update Database” followed by “Reorganization”.
5. Defined Update parameters in System > Configuration to activate the Remote Update service.

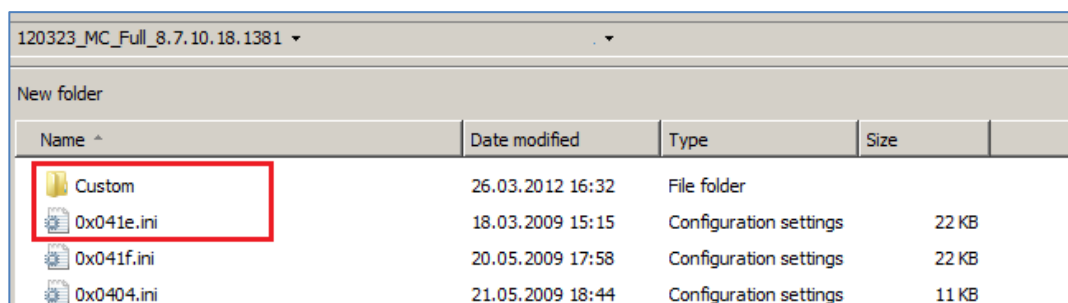
Preparation of Install Set:

As first step of the process the install set needs to be prepared for the first workstation to be updated.

- Unpack the install set as usual
- Gather all customized files
- Add customized files to install set

Customized Files:

After unpacking the installation build a new folder named as “Custom” should be created:



Name ^	Date modified	Type	Size
Custom	26.03.2012 16:32	File folder	
0x041e.ini	18.03.2009 15:15	Configuration settings	22 KB
0x041f.ini	20.05.2009 17:58	Configuration settings	22 KB
0x0404.ini	21.05.2009 18:44	Configuration settings	11 KB

All customized files should be copied into this folder. Please make sure that the files are stored using exactly the same folder structure as used in the installation directory.

Examples:

- SQL.INI and FMLogin.INI: stored in the root of the custom folder
- Order Sheet and other reports: stored in correct QRP folder

The content of this folder will be copied after unpacking the standard files.

Main Application Update:

Now one PC running Materials Control should be updated with the previously defined setup to ...

- ... test the created install set
- ... proceed with the next steps

On this one PC start SETUP.EXE and select the option to update/maintain an existing installation. Follow the steps as usual.

For further details please read the documentation “MC_Application_Installation_8_6_6_10”.

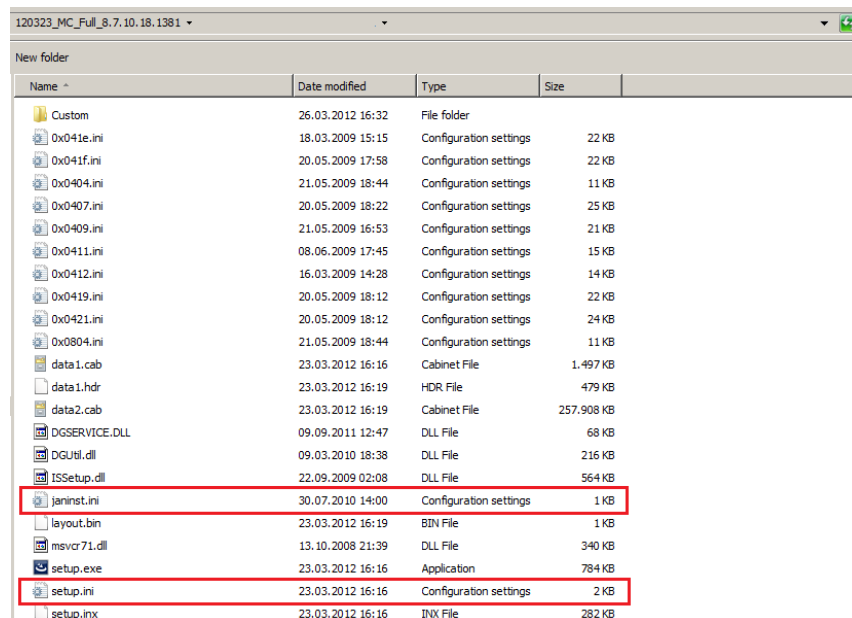
After the execution of the application update please check if all files were copied properly and everything works as expected.

Remote Update Setup Preparation:

As next step install set needs to be configured for the automated execution on all other workstations.

- a) Define a directory accessible from all other workstations using Materials Control. The automated update will be initiated by a setting within the MC database. Once set the system will search for the defined network location containing the setup files.
- b) Prepare “unattended settings” in the install set. After the successful installation of Material Control on the “Master PC” now the setup should be changed to run unattended.

The installation process is mainly controlled by 2 files:



Name	Date modified	Type	Size
Custom	26.03.2012 16:32	File folder	
0x041e.ini	18.03.2009 15:15	Configuration settings	22 KB
0x041f.ini	20.05.2009 17:58	Configuration settings	22 KB
0x0404.ini	21.05.2009 18:44	Configuration settings	11 KB
0x0407.ini	20.05.2009 18:22	Configuration settings	25 KB
0x0409.ini	21.05.2009 16:53	Configuration settings	21 KB
0x0411.ini	08.06.2009 17:45	Configuration settings	15 KB
0x0412.ini	16.03.2009 14:28	Configuration settings	14 KB
0x0419.ini	20.05.2009 18:12	Configuration settings	22 KB
0x0421.ini	20.05.2009 18:12	Configuration settings	24 KB
0x0804.ini	21.05.2009 18:44	Configuration settings	11 KB
data1.cab	23.03.2012 16:16	Cabinet File	1.497 KB
data1.hdr	23.03.2012 16:19	HDR File	479 KB
data2.cab	23.03.2012 16:19	Cabinet File	257.908 KB
DGSERVICE.DLL	09.09.2011 12:47	DLL File	68 KB
DGL\tdi.dll	09.03.2010 18:38	DLL File	216 KB
ISSetup.dll	22.09.2009 02:08	DLL File	564 KB
janinst.ini	30.07.2010 14:00	Configuration settings	1 KB
layout.bin	23.03.2012 16:19	BIN File	1 KB
mserver71.dll	13.10.2008 21:39	DLL File	340 KB
setup.exe	23.03.2012 16:16	Application	784 KB
setup.ini	23.03.2012 16:16	Configuration settings	2 KB
setup.inx	23.03.2012 16:16	INX File	282 KB

- JANINST.INI
 - This file contains the application related features.
- SETUP.INI
 - This file contains the main settings for the install shield.

Before starting at all, please create a backup of these two files!

In both files please adjust the mentioned parameters only! Do not touch other definitions as these may result in an incomplete installation of Materials Control!

JANINST.INI:

Open the file JANINST.INI with an Editor.

The first section of this file contains parameters regarding the installation type.

```
[Types]
Show=T
Unattended=T
ShowAbortMessages=T
```

Here two parameters must be checked:

Unattended=T
 This parameter activates the unattended installation. Please be aware of the spelling!
 In versions 8.7.10.xx and lower the parameter must be written as *Unattended*.
 In versions 8.7.20.xx and higher the parameter must be written as *Unattended*.

ShowAbortMessages=T
 This parameter will show a button to abort/cancel the installation

SETUP.INI:

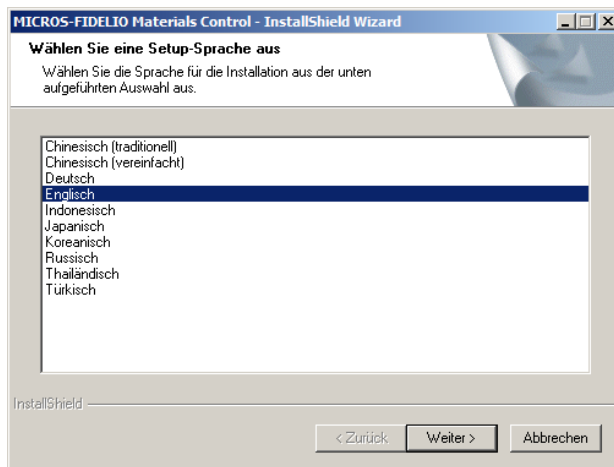
Now some adjustments should be done in the file SETUP.INI.

In this the first section only will be adjusted:

ORIGIN:

```
[Startup]
EnableLangDlg=Y
Product=MICROS-FIDELIO Materials Control
ProductGUID=501B752E-DD7A-41AA-A54E-408F1925699C
CompanyName=MICROS-FIDELIO
ErrorReportURL=http://www.installshield.com/isetup/ProErrorCentral.asp?ErrorCo
de=%d : 0x%x&ErrorInfo=%s
MediaFormat=1
LogMode=4
SmallProgress=N
SplashTime=
CheckMD5=Y
CmdLine=
ShowPasswordDialog=N
ScriptDriven=4
```

The first parameter to change controls the language selector:



[Startup]

EnableLangDlg=Y

Change this parameter to "EnableLangDlg=N" to hide this screen

The following 5 entries **must not** be touched at all.

```
Product=MICROS-FIDELIO Materials Control
ProductGUID=501B752E-DD7A-41AA-A54E-408F1925699C
CompanyName=MICROS-FIDELIO
ErrorReportURL=http://www.installshield.com/isetup/ProErrorCentral.asp?ErrorCode=%d : 0x%x&ErrorInfo=%s
MediaFormat=1
```

The next part defines the type of the unattended installation:

Depending on the existing installations one of the two options must be selected

1. The setup will select the first installation found and updates it.
2. The setup allows to select an existing application for update
 - ➔ This option should be used if multiple Materials Control applications are installed on a PC.

The following examples will show how to configure the SETUP.INI to execute the installation for each type:

Type 1 – The setup will select the first installation found for update:

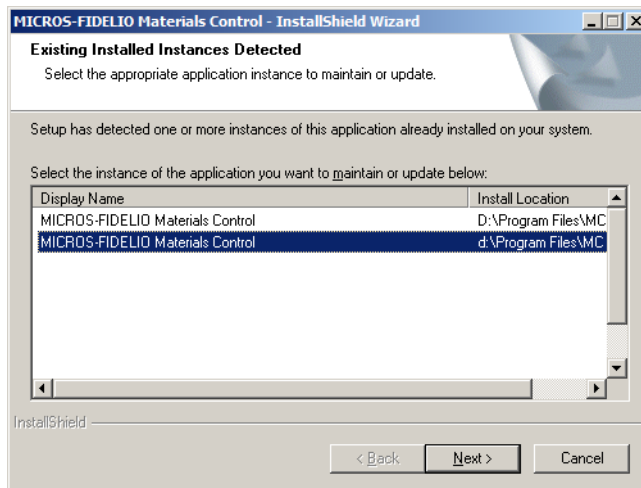
- The user cannot select any installation. The system will execute the application update on the first installation found.

```
LogMode=1
SmallProgress=N
SplashTime=
CheckMD5=Y
CmdLine=/hide_usd /I1033
ShowPasswordDialog=N
```


ScriptDriven=4

Type 2 – The setup allows to select an existing application for update:

- All installed applications are shown and can be selected.



- LogMode=1**
- SmallProgress=N**
- SplashTime=**
- CheckMD5=Y**
- CmdLine= /11033**
- ShowPasswordDialog=N**
- ScriptDriven=4**

If required the installer also could use a different language per default.

In the section explained above the parameter “**CmdLine=**” is shown. Besides the function to hide screens also the language to use can be defined here.

The syntax is:

/![language_code]

/: defines that a parameter will be handed over

l: declares that a language definition will follow

[Language_code]: 4 digit language code

Supported Codes:

- 1031 German
- 1033 English
- 1049 Russian
- 2052 Chinese
- 1041 Japanese
- 1042 Korean
- 1055 Turkish
- 1028 Taiwanese

Save the adjusted files and execute the installation as usual.

- c) Copy install set to network location.
Once all is configured properly the new install set should be copied to the network location accessible for all other Materials Control clients.

Database Update:

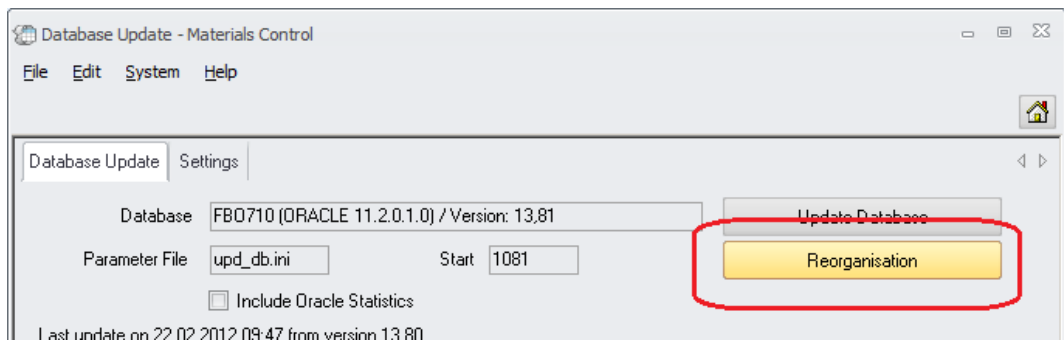
On the already updated Master PC now the database update should be executed.

Go to System > Database Update:

Run first "Update Database":



Execute "Reorganisation":



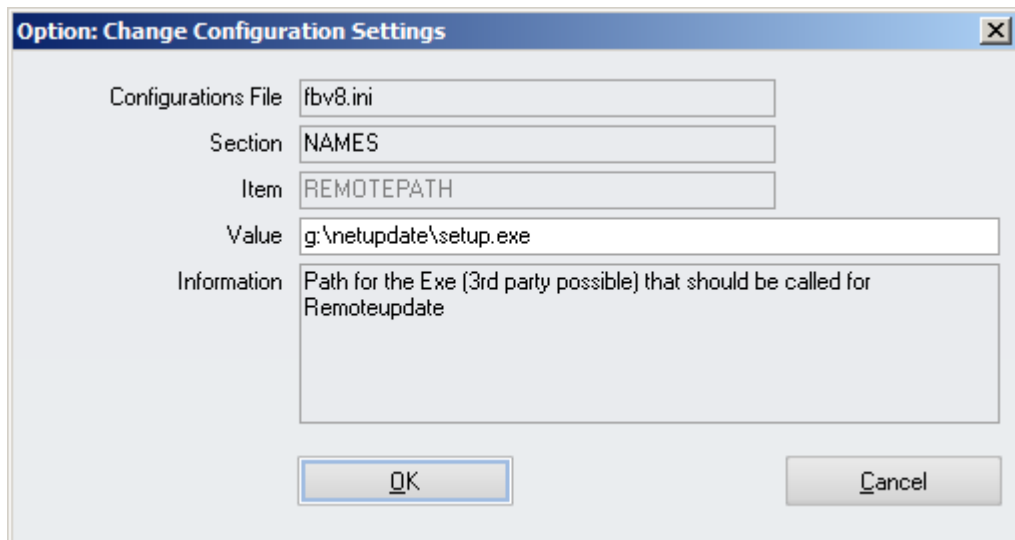
Once this was done the database should be accessed using the new application only. Please proceed with the next step immediately!

Remote Update Activation:

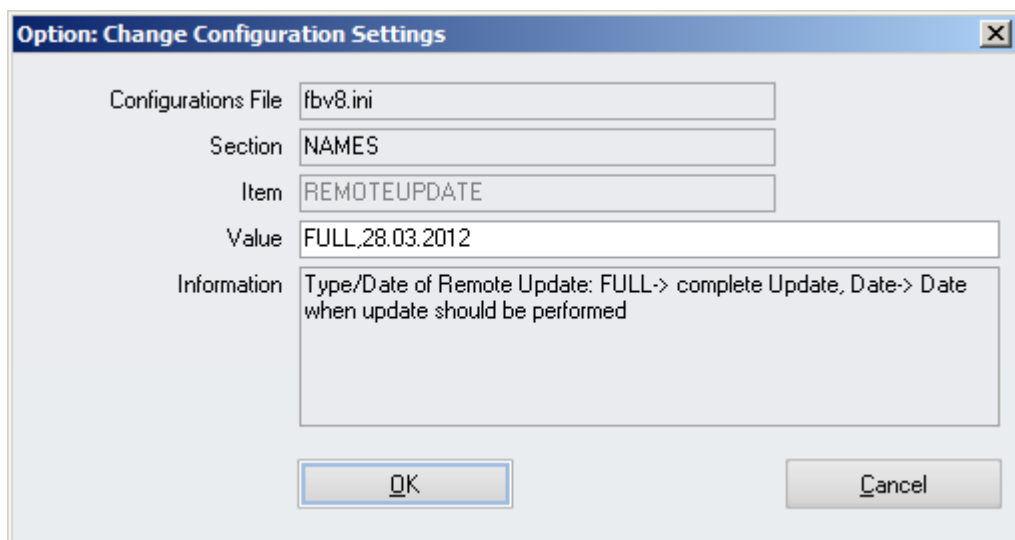
Now the Automated Update needs to be activated.

Go to System > Configuration:

In the folder [NAMES] two parameters must be defined:



- RemotePath: Define the complete path to the SETUP.EXE in the previously defined network directory and confirm with OK.



- RemoteUpdate: This is the main initiator. Enter the type and the date, separated by comma.

The type is always "FULL".

A correct entry as e.g. shown above would execute the update on March 28th 2012 on each PC where Materials Control was started and the application update was not yet executed on that date.

NOTE: The Remote Update Tool can be used for Standard Databases only. The Tool checks the entries in fmlogin.ini and will start the automated update for the default entry only.

```
[Database]
DB1=mcdata,MCDATA
DB2=mctrain,MCTRAIN
```

Default=mcdata

Remote Update Execution:

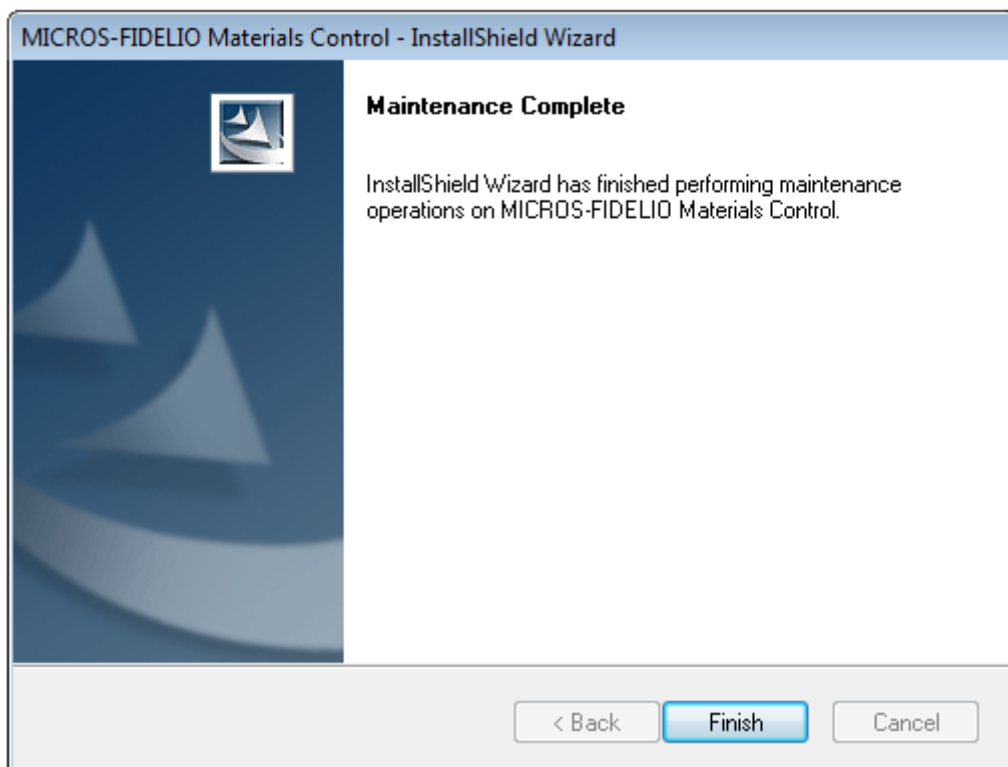
Once all above was prepared Materials Control will now execute the update after the user has started the application.



Materials Control will now be closed and the installation/update process will start immediately.

Depending on the UAC configuration of the Windows PC the Operating System may ask for confirmation to execute SETUP.EXE. This must be confirmed with "Yes".

Once finished the installation routine will confirm this with the following message:



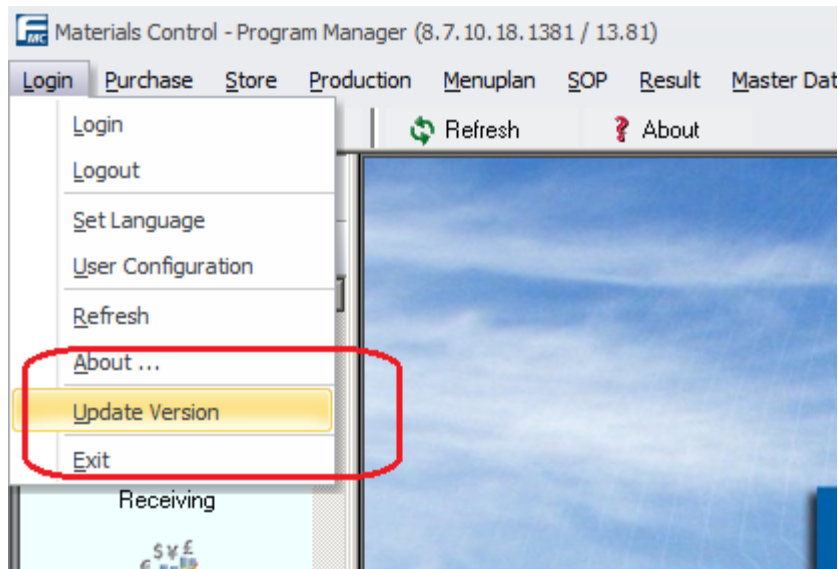
Click on "Finish" to close the installer. Now the routine will re-start Materials Control.

If this update procedure was interrupted by any issue, it will be restarted at next login at this PC.

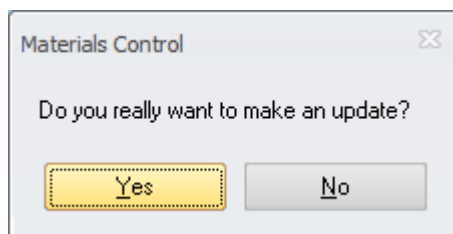
After completion the system creates a file named as REMOTE.INI in the Materials Control installation directory.

If the application update should be executed once again on the same day, ...

- either this file must be deleted on each PC manually
- or the user initiates the update via the application. After the automated update was executed once a new entry becomes active in the menu:



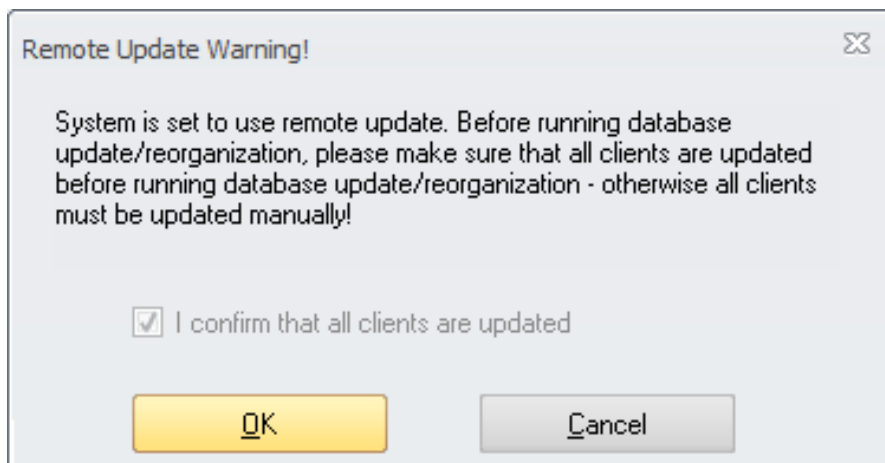
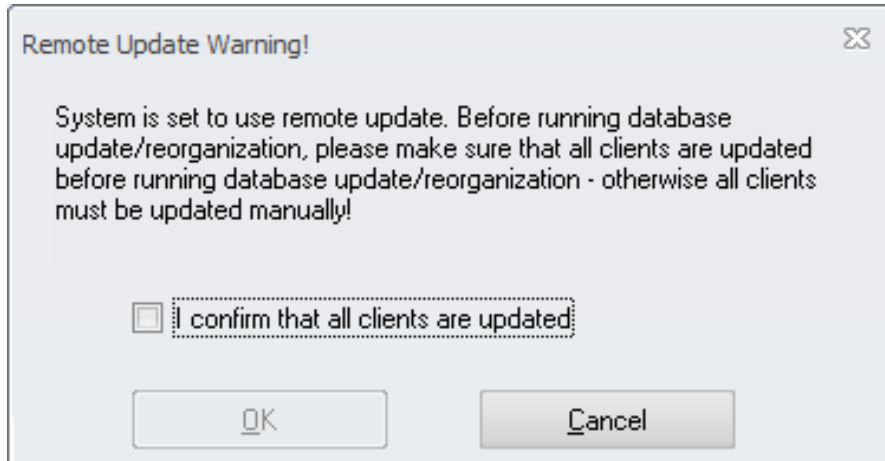
The system will now ask once more for confirmation...



And will start the update from the defined network location as shown before.

Remote Update < 8.7.20.xx Warning

If the database is updated from a version older than 8.7.20 to a current version the system will show a warning message before the Database Update could be started.



The OK Button will be released only once the message was manually confirmed.

The confirmation of the message will be logged in the Control Table:

The screenshot shows a window titled "Manage Control Table" with a menu bar (File, Edit, System, Help) and a toolbar. Below the toolbar is a table with the following data:

Checked	Date	Action	Information
<input type="checkbox"/>	23.08.2012 17:35:11	LOGIN	Systemadministrator
<input type="checkbox"/>	23.08.2012 17:35:27	LOGOUT	Systemadministrator
<input type="checkbox"/>	23.08.2012 17:36:02	LOGIN	Systemadministratoer
<input type="checkbox"/>	23.08.2012 17:40:58	Remote Update Warning	Confirmed that all clients are updated. Database update allowed.

The reason for this message is the introduction of the encrypted passwords. An old MC application will not be able to handle the encrypted passwords and as a result of this the users will not be able to log in anymore.

The update of the client applications must be done **before** the DB update was started!

MICROS-FIDELIO GmbH
Europadamm 2-6
41460 Neuss
Germany
Phone: +49 2131-137 0 | Fax: +49 2131-137 777