

MICROS Materials Control

Master Data Import



Product Version **8.7.20.30.1418**

Author:	Joerg Trommeschlaeger
Department:	Materials Control
Date:	15.01.2013
Version No. of Document:	1.0

Copyright © 2015, Oracle and/or its affiliates. All rights reserved.

This software and related documentation are provided under a license agreement containing restrictions on use and disclosure and are protected by intellectual property laws. Except as expressly permitted in your license agreement or allowed by law, you may not use, copy, reproduce, translate, broadcast, modify, license, transmit, distribute, exhibit, perform, publish, or display any part, in any form, or by any means. Reverse engineering, disassembly, or decompilation of this software, unless required by law for interoperability, is prohibited.

The information contained herein is subject to change without notice and is not warranted to be error-free. If you find any errors, please report them to us in writing.

If this software or related documentation is delivered to the U.S. Government or anyone licensing it on behalf of the U.S. Government, then the following notice is applicable:

U.S. GOVERNMENT END USERS: Oracle programs, including any operating system, integrated software, any programs installed on the hardware, and/or documentation, delivered to U.S. Government end users are "commercial computer software" pursuant to the applicable Federal Acquisition Regulation and agency-specific supplemental regulations. As such, use, duplication, disclosure, modification, and adaptation of the programs, including any operating system, integrated software, any programs installed on the hardware, and/or documentation, shall be subject to license terms and license restrictions applicable to the programs. No other rights are granted to the U.S. Government.

This software or hardware is developed for general use in a variety of information management applications. It is not developed or intended for use in any inherently dangerous applications, including applications that may create a risk of personal injury. If you use this software or hardware in dangerous applications, then you shall be responsible to take all appropriate fail-safe, backup, redundancy, and other measures to ensure its safe use. Oracle Corporation and its affiliates disclaim any liability for any damages caused by use of this software or hardware in dangerous applications.

Oracle and Java are registered trademarks of Oracle and/or its affiliates. Other names may be trademarks of their respective owners.

Intel and Intel Xeon are trademarks or registered trademarks of Intel Corporation. All SPARC trademarks are used under license and are trademarks or registered trademarks of SPARC International, Inc. AMD, Opteron, the AMD logo, and the AMD Opteron logo are trademarks or registered trademarks of Advanced Micro Devices. UNIX is a registered trademark of The Open Group.

This software or hardware and documentation may provide access to or information about content, products, and services from third parties. Oracle Corporation and its affiliates are not responsible for and expressly disclaim all warranties of any kind with respect to third-party content, products, and services unless otherwise set forth in an applicable agreement between you and Oracle. Oracle Corporation and its affiliates will not be responsible for any loss, costs, or damages incurred due to your access to or use of third-party content, products, or services, except as set forth in an applicable agreement between you and Oracle.

Table of Contents

INTRODUCTION	4
OVERVIEW	4
MC_MD_IMPORT.XLS FILE	4
BASE UNITS:	4
OVER GROUPS:	4
MAJOR GROUPS:	4
ARTICLE GROUP:	4
DATA:	5
ARTICLE:	5
ARTICLE NUMBER:	5
ARTICLE GROUP:	5
INV_SORT:	5
BASE UNIT:	5
ID:	5
LAST PRICE:	5
SALES PRICE:	5
CREATION OF THE SQL SCRIPT:	6
INSERTMD.SQL	7
ENTERING THE MASTER DATA TO THE DATABASE:	8
IMPORTING THE MASTER DATA TO MATERIALS CONTROL	9
TIPS & TRICKS:	10
WHEN IMPORTING FROM FIDELIO F&B v6.x	10

Introduction

This document will describe the one-time master data import process.

Overview.

The MC_MD_Import.xls file is a pre-prepared Excel worksheet containing 5 tables. A Macro is contained within the Worksheet, which when run, will create an SQL file containing the Information necessary for a successful Import to Materials Control. The SQL Script is executed in SqlPlus Worksheet (Oracle Server) and reads the Data into the IFC_* tables in the selected Database. The Data contained within the IFC_* tables can then be Imported, using the function "Import Master Data" under the Master Data section, and will then become available for use within the Application. A basic working knowledge of SQL together with dBase is assumed. A minimum Materials Control Version of 6.80 is necessary.

MC_MD_Import.XLS File.

The following is an explanation of the Excel Worksheet used for the Master Data Import.

Base Units:

The Base Units Table contains the Standard Base Units from Materials Control and may not be edited ! From this Table, the User can select the appropriate Base Unit when entering each Article in the Data Table. No Extra Units can be added here.

Over Groups:

The Over Groups Table contains 2 fields. In the first field, the Name of the Over Group should be entered, and in the second field either a "1" for "Profit Contribution" or a "0" for "Expenses". This is a very important entry and should be controlled before exporting the file to SQL as this setting **cannot** be changed later in the Application.

Major Groups:

The Major Groups Table contains also 2 fields. The first of which is used to enter the names of the Major Groups required. Each Major Group must then be assigned to the appropriate Over Group. This can be done by clicking with the mouse within the second field, which will result in an Arrow appearing on the right side of the field. By selecting the Arrow, a list of the entered Over Groups will appear and the appropriate Group can be selected.

Article Group:

The Article Groups Table contains 3 fields. The first of which is used to enter the Article Group Number which is necessary for the sorting of the Article for Inventory purposes. The second field is used for the Article Group name and the third for the assignment to the appropriate Major Group. The assignment of the Article Group to the Major Group is made in the same way as the Major Group to Over Group. (See above : Major Groups)

Note: If any changes are made to the Group Names or Numbers after the assignments have been completed then the assignment must be re-made ! This is necessary as any changes will not be automatically updated within the Worksheet.

Data:

The Data Table contains 8 fields which require the following data entries:

Article:

The name of the Purchase/Store Article.

Article Number:

Every Article **must** have a unique Article Number. Without a valid number the import will **not** run!

Article Group:

The appropriate Article Group can be selected within the field. (See assigning of Groups above)

INV_SORT:

This field will be filled automatically with the Article Group Number when the Article Group is selected. If this is not the case then activate the Inventory Sorting function by clicking on the Icon at the top of the Data Table.

Base Unit:

The required Base Unit can be selected by using the drop down list. (See Group Assignments above)

ID:

This is the ID number for the selected Base Unit and will be filled automatically.

Last Price:

The actual Last price for the Article can be entered here, the Last price being the price for the selected Base Unit. Otherwise the field should be filled with a Zero.

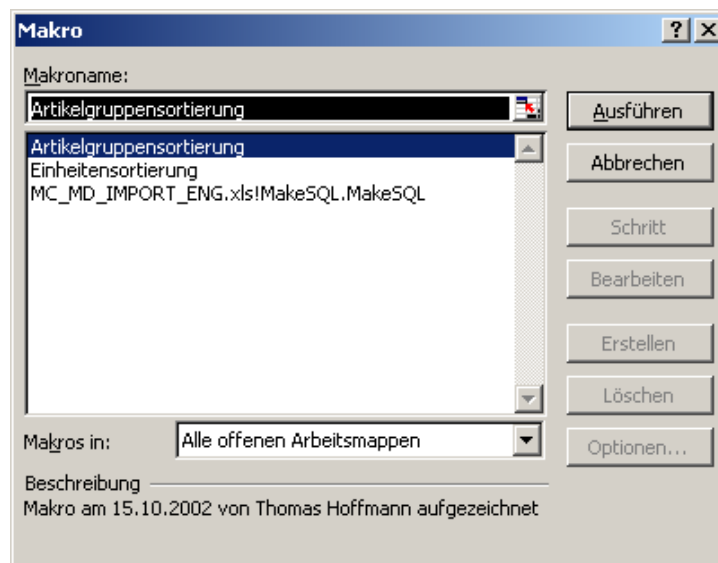
Sales Price:

When using Sales prices for internal transfer, they can be entered here and again, the price is for the selected Base Unit. Otherwise the field should be filled with a Zero.

Creation of the SQL Script:

When all Data has been entered to the Excel Worksheet then the next step is to create the SQL script necessary for the SQL Editor. This is achieved by taking the following steps:

1. Save your Worksheet.
2. Under the Excel Menu Section “Extras” select the function “Macro” and then again “Macros”. ALT + F8 can also be used. The following screen will appear.



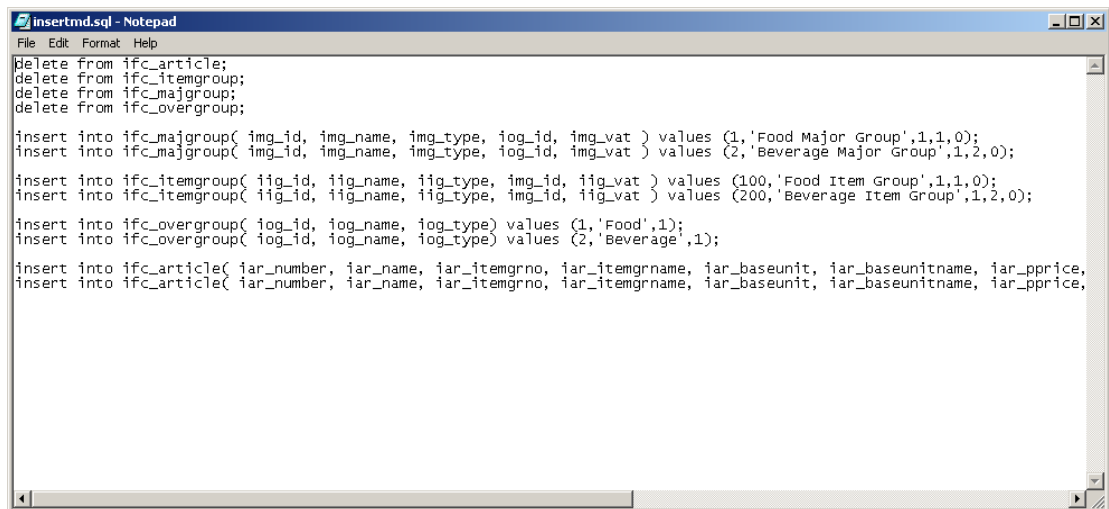
3. Select the Macro “MC_MD_IMPORT_ENG.xls!MakeSQL.Make SQL”.
4. You will be required to enter a password. The Password is “mc2002”.
5. The SQL Script will be created. This can be observed at the bottom left of the Screen in Excel.
6. Depending on how you started Excel, the created SQL Script (insertmd.sql) can be found in the same directory as your MC_MD_Import_eng.xls or in the “My Documents” folder.

Insertmd.SQL

The SQL Script can be opened in Notepad and contains 5 sections.

The first section removes all entries currently in the IFC_* fields of the selected Database. This means that the Script can be run many times but will never cause a conflict with Data already present in the Database tables.

The other sections contain the information to be appended to the IFC tables, i.e. Major Groups, Article Groups, Over Groups and Articles.



```
File Edit Format Help
delete from ifc_article;
delete from ifc_itemgroup;
delete from ifc_majgroup;
delete from ifc_overgroup;

insert into ifc_majgroup( img_id, img_name, img_type, iog_id, img_vat ) values (1,'Food Major Group',1,1,0);
insert into ifc_majgroup( img_id, img_name, img_type, iog_id, img_vat ) values (2,'Beverage Major Group',1,2,0);

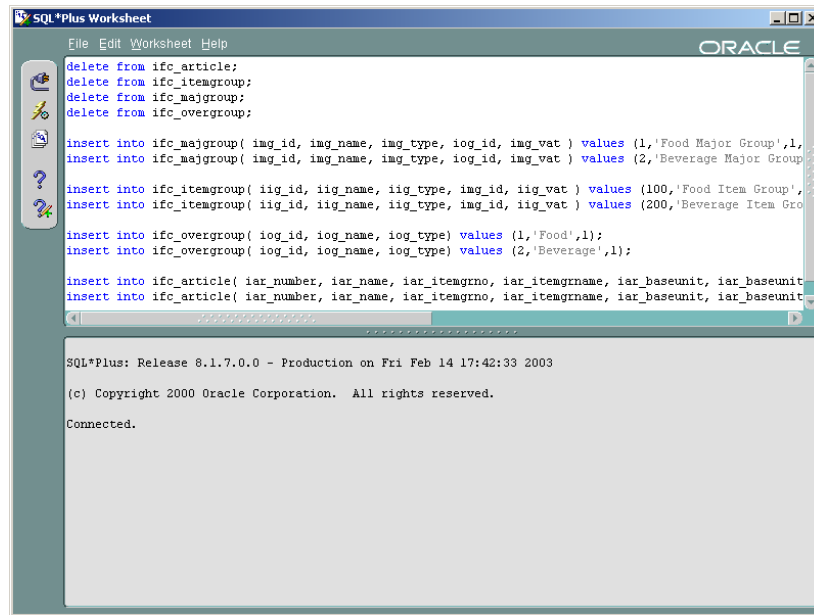
insert into ifc_itemgroup( iig_id, iig_name, iig_type, img_id, iig_vat ) values (100,'Food Item Group',1,1,0);
insert into ifc_itemgroup( iig_id, iig_name, iig_type, img_id, iig_vat ) values (200,'Beverage Item Group',1,2,0);

insert into ifc_overgroup( iog_id, iog_name, iog_type) values (1,'Food',1);
insert into ifc_overgroup( iog_id, iog_name, iog_type) values (2,'Beverage',1);

insert into ifc_article( iar_number, iar_name, iar_itemgrno, iar_itemgrname, iar_baseunit, iar_baseunitname, iar_pprice,
insert into ifc_article( iar_number, iar_name, iar_itemgrno, iar_itemgrname, iar_baseunit, iar_baseunitname, iar_pprice,
```

Entering the Master Data to the Database:

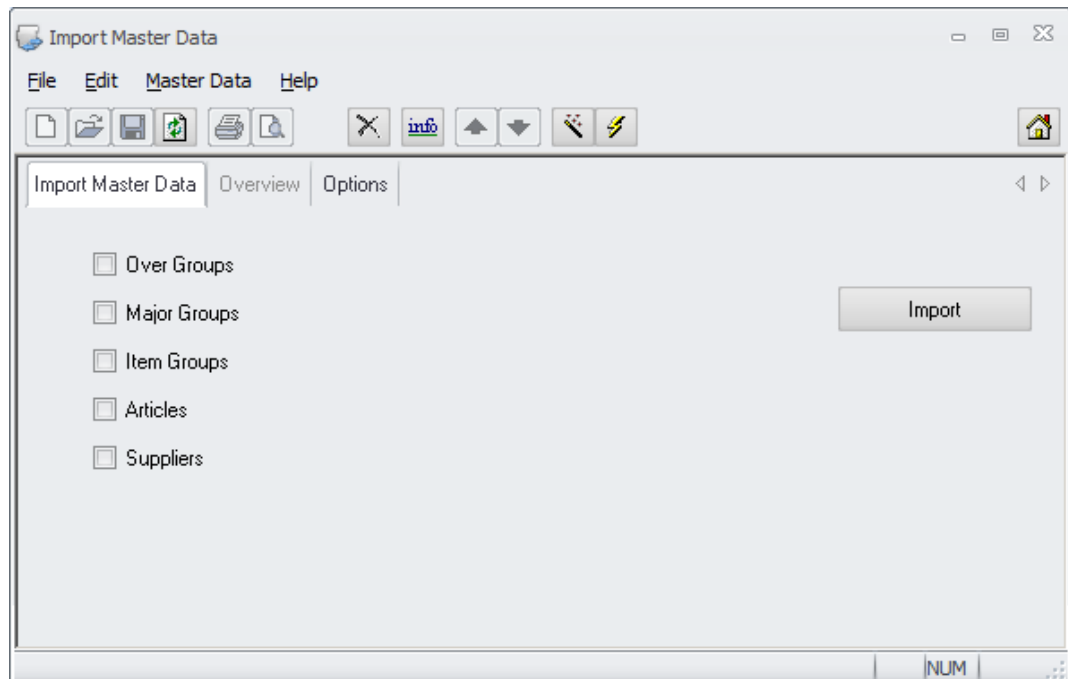
1. Using SQL*Plus Worksheet connect to the required Database.
2. Simply copy the contents of the insertmd.SQL to the work area and add "commit;" to the end of the script before executing.



Importing the Master Data to Materials Control.

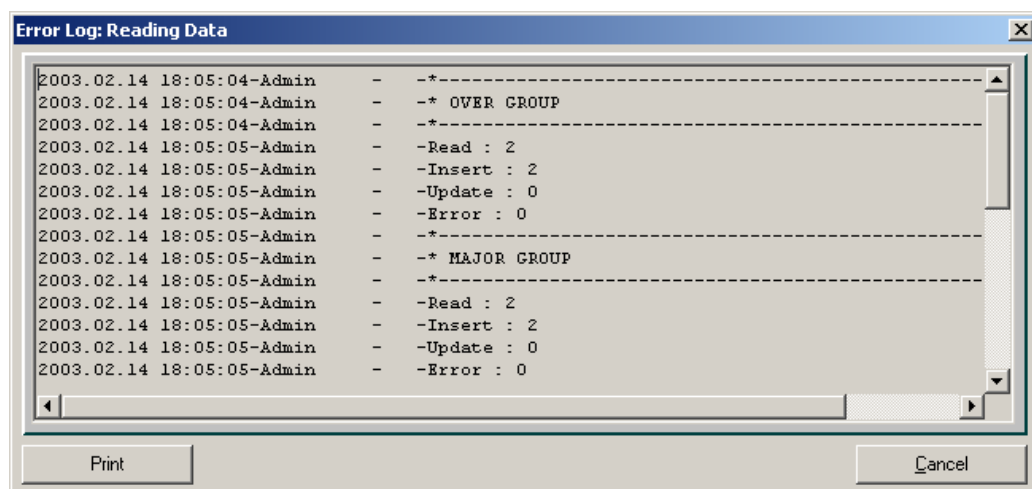
After loading the Data via the SQL Editor into the Database, the final step is to Import the Data to the Master Data Tables in Materials Control.

This step is achieved directly in Materials Control using the function "Import Master Data" which can be found under the Menu section "Master Data":



The Sections "Over Groups, Major Groups, Item Groups and Articles" should be marked and then the Import can be started by clicking on the Import Icon.

At the end of the Import an Error Log will be generated which shows what exactly has been imported.



The Import can be run many times but items already imported will **not** be imported a second time.

Tips & Tricks:

When importing from Fidelio F&B v6.x

1. When converting the Master Data from Fidelio F&B V6, the following Databases are necessary: Article.dbf, Group.dbf and the Unit.dbf.
2. Make a copy of the above named Databases and then open them with Excel. Do not open the origin DBF's.
3. Start first with the Group.dbf. Sort the entire worksheet by "GROUP_CODE" and then by "GROUP_ID".

	A	B	C	D	E	F	G	H	I	J	K	L	M
1	GR	GROUP	NAME	USERNAME	ACCOUNT	N	NON	INV					
2	1	O	Speisen			0							
3	2	O	Getränke			0							
4	8	O	Leergut			0							
5	10	M	Fleischkühlhaus			0							
6	11	M	Xxx Wild/Geflügel			0							
7	12	M	Fischkühlhaus			0							
8	13	M	Obst/Gemüse Kühlhaus			0							
9	14	M	Molkereikühlhaus			0							
10	15	M	Trockenlager			0							
11	16	M	Tiefkühlager			0							
12	17	M	Xxx Backwaren			0							
13	18	M	Xxx Kaffee/Tee			0							
14	19	M	Xxx Korrektur Speise			0							
15	20	M	Bier			0							
16	21	M	Wein/Sekt/Champagner			0							
17	23	M	Spirituosen			0							
18	24	M	Säfte/AFG			0							
19	29	M	Korrekturen Getränke			0							
20	80	M	Leergut			0							
21	100	I	Rind			0							
22	101	I	Schwein			0							
23	102	I	Lamm			0							

Sortieren

Sortieren nach: ☒ Aufsteigend ☐ Absteigend

Anschließend nach: ☒ Aufsteigend ☐ Absteigend

Zuletzt nach: ☒ Aufsteigend ☐ Absteigend

Liste enthält: ☒ Überschrift ☐ keine Überschrift

The Group Data will now be optimally sorted for simply cutting and pasting to the appropriate Tables in the Data Import Worksheet, first the "O" entries to Over Groups, "M" entries to Major Groups and finally "I" entries to Article Groups.

In the Data Import Worksheet you should now assign the correct Over Groups to the Major Groups and Article Groups to Major Groups. Don't forget the assignment of "1" or "0" in the Over Groups (See Over Groups – explanation).

4. The Article.dbf should then be opened in Excel and all fields deleted except for ARTICLE_ID, ARTICLE_NO, ARTICLE_NAME, O_GROUP, M_GROUP, I_GROUP, STORE_UNIT, LASTPRICE and AVE_PRICE.
5. The worksheet with the above named fields should then be sorted by "O_GROUP" then "I_GROUP" and finally be STORE_UNIT. See below.

	A	B	C	D	E	F	G	H	I
1	ARTICLE ID	ARTICLE NO	ART NAME	O GROUP	M GROUP	I GROUP	STORE UNIT	LASTPRICE	AVE PRICE
2	1	0	Getränke Belastung 16%	2	29	299	1	0.51129	0.51129
3	2	0	Speisen Belastung 7%	1	19	100	1	0.51129	0.51129
4	3	0	Leergut Flasche 0,30 DEM	8	80	800	1	0.15339	0.15339
5	4	7253	Coca Cola MW 0,33	2					0.50018
6	5	0	Getränke Belastung 7%	2					0.00000
7	6	0	Speisen Belastung 16%	1					0.00000
8	7	0	Non Food 16%	3					0.51440
9	8	0	Non Food 7%	3					0.51129
10	9	7400	Acqua Panna Still MW 0,5	2					0.32634
11	10	7401	Acqua Panna Still MW 1,0	2					0.48571
12	13	7404	Apoll. Select MW 0,75	2					0.46001
13	16	7407	Bonaqua PEM 18,0	2					0.82176
14	17	7408	Heppinger Heil. MW 0,25	2					0.22513
15	19	7410	Personalwasser 0,7	2					0.15339
16	20	7411	San Pellegrino EW 0,75	2					0.00000
17	21	7412	San Pellegrino MW 0,25	2					0.27482
18	22	7413	San Pellegrino MW 1,0	2					0.50703
19	35	0	Granini Maracujan. 1,0	2					1.10439
20	39	7015	Granini O-Saft EW 0,2	2					0.37282
21	42	7018	Vruhten Tomatensaft 1,0	2					0.83596
22	44	7251	Bitter Lemon Schw. MW 0,2	2	24	241	7	0.34853	0.24815

Sortieren

Sortieren nach

O_GROUP

Aufsteigend

Absteigend

Anschließend nach

I_GROUP

Aufsteigend

Absteigend

Zuletzt nach

STORE_UNIT

Aufsteigend

Absteigend

Liste enthält

Überschrift

keine Überschrift

Optionen...

OK

Abbrechen

Copy the contents of the "I_GROUP" to the "Article Number" field on the Data Table of the Import Worksheet. This will make it easier to assign the correct Article Group to each Item and as all Articles are now grouped by Article Group, the correct entry can simply be copied down until the next group begins. If the same "I_GROUP" number is being used as in F&B V6 then the correct Article Group can be easily selected and controlled as this number will be automatically written in the "INV_SORT" field.

	A	B	C	D	E	F	G
1	(38)	(15)	Article Group	INV_SORT	Base Unit	ID	(16)
2	Article	Article Number	Food Item Group	100		INV	Last Price
3		100		0		INV	
4		100		0		INV	
5		100		0		INV	
6		100		0		INV	
7		100		0		INV	
8		100		0		INV	
9		100		0		INV	
10		100		0		INV	
11		100		0		INV	
12		100		0		INV	
13		100		0		INV	
14		100		0		INV	
15		100		0		INV	
16		100		0		INV	
17		100		0		INV	
18		100		0		INV	
19		100		0		INV	
20		100		0		INV	
21		100		0		INV	
22		100		0		INV	
23		100		0		INV	

- The Contents of the "ARTICLE_NAME" field can now be copied to the "Article" field of the Data Import Worksheet, together with either the contents of the "ARTICLE_NO" field or the "ARTICLE_ID" field to the "Article Number" field thus overwriting the earlier entry of the Article Group Number. Remember that every item must have a unique number. The End User can change this number to one of his/her own choice in the Application later.
- The Customer should then assign the correct Base Unit to each Article and reference to the STORE_UNIT in the Article.dbf and the Unit description in the Unit.dbf can speed this step up.
It is assumed here that the Customer has received a Master Data training in Materials Control already and understands the importance of this step as later the assigned **Base Unit cannot be changed!**
- The LASTPRICE or AVE_PRICE can also be copied in. However this is not recommended as the price in F&B V6 may not bare any relationship to the new Base Unit being used in Materials Control. It is recommended here to leave both prices at Zero unless the Customer wishes otherwise.

**MICROS-FIDELIO GmbH
Europadamm 2-6
41460 Neuss
Germany
Phone: +49 2131-137 0 | Fax: +49 2131-137 777**