

Materials Control

Recipe Reduction based on Article Defaults



Copyright by:
MICROS-FIDELIO GmbH
Europadamm 2-6
D - 41460 Neuss
Date: August 31st 2006

Copyright © 2015, Oracle and/or its affiliates. All rights reserved.

This software and related documentation are provided under a license agreement containing restrictions on use and disclosure and are protected by intellectual property laws. Except as expressly permitted in your license agreement or allowed by law, you may not use, copy, reproduce, translate, broadcast, modify, license, transmit, distribute, exhibit, perform, publish, or display any part, in any form, or by any means. Reverse engineering, disassembly, or decompilation of this software, unless required by law for interoperability, is prohibited.

The information contained herein is subject to change without notice and is not warranted to be error-free. If you find any errors, please report them to us in writing.

If this software or related documentation is delivered to the U.S. Government or anyone licensing it on behalf of the U.S. Government, then the following notice is applicable:

U.S. GOVERNMENT END USERS: Oracle programs, including any operating system, integrated software, any programs installed on the hardware, and/or documentation, delivered to U.S. Government end users are "commercial computer software" pursuant to the applicable Federal Acquisition Regulation and agency-specific supplemental regulations. As such, use, duplication, disclosure, modification, and adaptation of the programs, including any operating system, integrated software, any programs installed on the hardware, and/or documentation, shall be subject to license terms and license restrictions applicable to the programs. No other rights are granted to the U.S. Government.

This software or hardware is developed for general use in a variety of information management applications. It is not developed or intended for use in any inherently dangerous applications, including applications that may create a risk of personal injury. If you use this software or hardware in dangerous applications, then you shall be responsible to take all appropriate fail-safe, backup, redundancy, and other measures to ensure its safe use. Oracle Corporation and its affiliates disclaim any liability for any damages caused by use of this software or hardware in dangerous applications.

Oracle and Java are registered trademarks of Oracle and/or its affiliates. Other names may be trademarks of their respective owners.

Intel and Intel Xeon are trademarks or registered trademarks of Intel Corporation. All SPARC trademarks are used under license and are trademarks or registered trademarks of SPARC International, Inc. AMD, Opteron, the AMD logo, and the AMD Opteron logo are trademarks or registered trademarks of Advanced Micro Devices. UNIX is a registered trademark of The Open Group.

This software or hardware and documentation may provide access to or information about content, products, and services from third parties. Oracle Corporation and its affiliates are not responsible for and expressly disclaim all warranties of any kind with respect to third-party content, products, and services unless otherwise set forth in an applicable agreement between you and Oracle. Oracle Corporation and its affiliates will not be responsible for any loss, costs, or damages incurred due to your access to or use of third-party content, products, or services, except as set forth in an applicable agreement between you and Oracle.

Table of Contents

INTRODUCTION:	4
SETUP:	5
ARTICLES:.....	5
CREATE DEPLETION RULES:	5
DELETE DEPLETION RULES:.....	10
Change Log:	11
SCHEDULER:	12
JOB DEFINITION:.....	13
Logfiles:	13
Reporting:	14
EXCEPTIONS / SPECIAL CASES:	15

Introduction:

This document will describe the handling of recipe reduction locations based on article definitions.

This function can be used if e.g. certain articles used in a recipe should always be reduced in a specific store regardless where the sales was done.

Examples:

Cocktails will always be taken from the Bar, but sold in all restaurants.

Ice Cream will always be taken from the Bistro, but sold in all restaurants.

As a result of that the system will check all ingredients of the recipes used in revenue booking.

Based on the recipe definitions the ingredients will be reduced from the cost center assigned to the sales location.

For all articles with defined depletion rules a transfer will now be booked when executing the job.

The depletion through the recipe will always take place in the cost center defined in the device. But through the assignment of a depletion cost center the SOH can be aligned again.

As a result of this the consumption takes place in the same cost center where the revenue was generated.

Because of performance reasons the function was not implemented in the usual revenue import process.

A separate job in the scheduler was created for this which could be set up to run whenever necessary.

Setup:

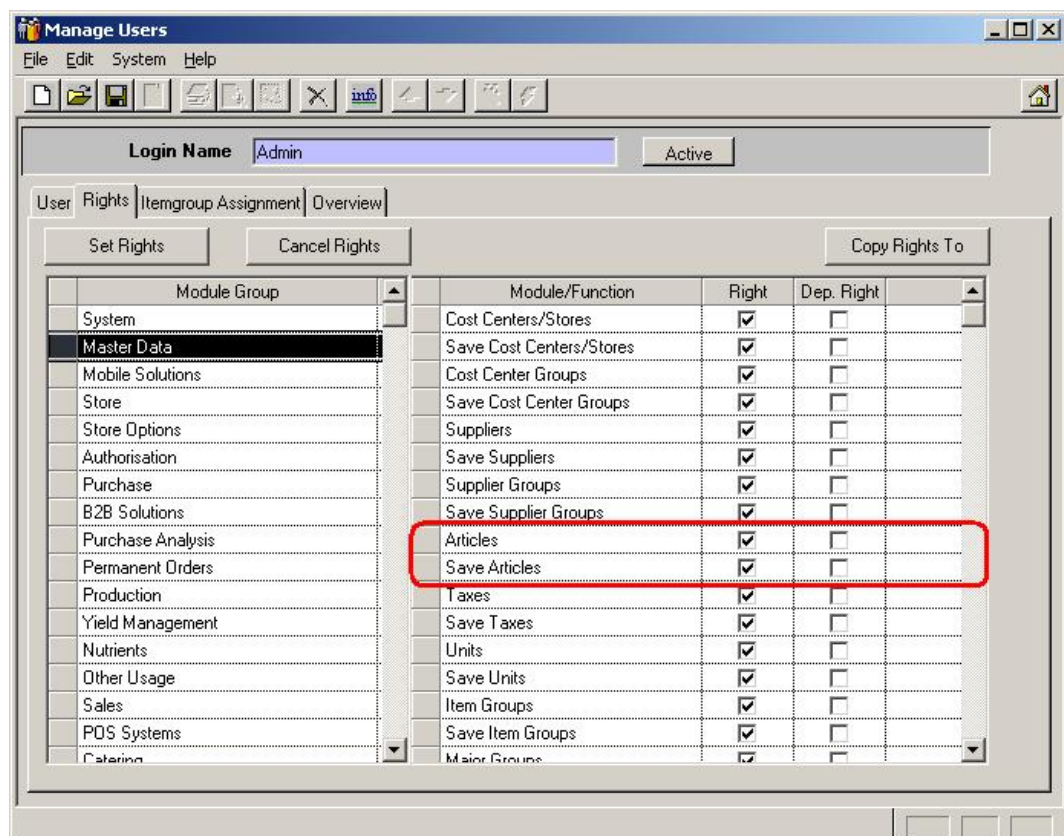
This section will describe the necessary steps to configure this function.

ARTICLES:



What do we have to know first?

- a) The user right to save articles must be active to modify the article definitions.



- b) The description of this function was created with the database version 10.26 and is valid for the program version 8.4.00 / 10.26 or higher.

CREATE DEPLETION RULES:

Goto Master Data > Articles > select the stock article and click on the tab "Other Settings":

Click on the “Open Folder” icon:

Please select here the cost center which requires depletion rules. Also the root cost center (main site) including sub cost centers can be called:

Manage Articles

File Edit Master Data Help

Article: **Lobster, fresh** Active

Edit Article Purchase Articles Categories Article Description Order Qty Calculation **Other Settings** Overview Stock on Hand Purchase Statistics

Receiving Deviation Settings:

Price min. deviation:

Price max. deviation:

QTY min. deviation:

QTY max. deviation:

Purchase Tax:

☐ Default (Use Settings from Item Group)

☐ No Tax

☒ Tax Rate 1

☐ Tax Rate 2

☐ Tax Rate 3

☐ Tax Rate 4

Depletion Rules

Cost Center/Store	Depletion Cost Center
Animation	
Anselms Bar	
Banquet	
Banquet Beverage	
Bars (statistic)	
Beergarden	
Beverage to Food	
BK Hungary Sales Store	
Blue Pavillon	
Bowling Center	
Catering	
Cigar Store	
Club	
Container Store 1	
Container Store 2	
Engineering	
Franchise Club	
Furniture	
Grill Restaurant	
Hadminko Warehouse	

Define Rule Delete Rule

The left column now shows all cost centers based on the above selection. The user can mark the cost centers where he wants to apply depletion rules and click on the button "Define Rule":

Manage Articles

File Edit Master Data Help

Article: **Lobster, fresh** Active

Edit Article Purchase Articles Categories Article Description Order Qty Calculation Other Settings Overview Stock on Hand Purchase Statistics

Receiving Deviation Settings

Price min. deviation

Price max. deviation

QTY min. deviation

QTY max. deviation

Depletion Rules

Cost Center/Store	Depletion Cost Center
Animation	
Anselms Bar	
Banquet	
Banquet Beverage	
Bars (statistic)	
od	
les Store	
1	
2	
Furniture	
Grill Restaurant	
Hadimken Warehouse	

Define Depletion Rule

Cost Center/Store: **Club**

OK Cancel Define Rule Delete Rule

Here the user can define the cost center where the articles should be transferred from. Select the cost center and confirm with "OK".

Define here now all necessary combinations. If no depletion cost center is defined no transfer will be executed.

Save the new assignments.

The system will now remove all cost centers without any assignment from the screen.

[illegible]

DELETE DEPLETION RULES:

Existing Depletion Rules can be deleted easily.

Goto Master Data > Articles > select the article > switch to the tab "Other Settings" > all existing Depletion rules will be displayed now. Mark the record which should be deleted and click on the button "Delete Rule".

The screenshot shows the 'Manage Articles' window with the 'Other Settings' tab selected. The article 'Lobster, fresh' is active. The 'Depletion Rules' table lists the following rules:

Cost Center/Store	Depletion Cost Center
Banquet	Club
Banquet Beverage	Club
Beergarden	Main Kitchen
Blue Pavilion	Club
Bowling Center	Main Kitchen
Catering	Club
Grill Restaurant	Club
Oasis	Oase - Kitchen

The 'Catering' rule is highlighted with a red box. The 'Delete Rule' button at the bottom right is also circled in red.

Once you save the article, the record will be removed and no more transfer will be booked for this combination.

Please note that this change will be effective with the next run of the scheduled job!

The definition of a new depletion rule, the change of an existing rule and the deletion of a rule is logged in the Control Table:

Checked	Date	Action	Information
<input type="checkbox"/>	01.08.2006 14:19:36	Article modified	LOBSTER, FRESH, from module: Manage Articles
<input type="checkbox"/>	01.08.2006 14:19:37	Depletion store changed (Lobster, fresh)	Depletion store for Lobster, fresh for Banquet changed from NULL to Club"
<input type="checkbox"/>	01.08.2006 14:19:37	Depletion store changed (Lobster, fresh)	Depletion store for Lobster, fresh for Banquet Beverage changed from NULL to Club"
<input type="checkbox"/>	01.08.2006 14:19:37	Depletion store changed (Lobster, fresh)	Depletion store for Lobster, fresh for Blue Pavilion changed from NULL to Club"
<input type="checkbox"/>	01.08.2006 14:19:37	Depletion store changed (Lobster, fresh)	Depletion store for Lobster, fresh for Bowling Center changed from NULL to Club"
<input type="checkbox"/>	01.08.2006 14:19:37	Depletion store changed (Lobster, fresh)	Depletion store for Lobster, fresh for Catering changed from NULL to Club"
<input type="checkbox"/>	01.08.2006 14:19:37	Depletion store changed (Lobster, fresh)	Depletion store for Lobster, fresh for Franchise Club changed from NULL to Club"
<input type="checkbox"/>	01.08.2006 14:19:37	Depletion store changed (Lobster, fresh)	Depletion store for Lobster, fresh for Grill Restaurant changed from NULL to Club"
<input type="checkbox"/>	01.08.2006 14:45:40	Article modified	LOBSTER, FRESH, from module: Manage Articles
<input type="checkbox"/>	01.08.2006 14:47:40	Article modified	LOBSTER, FRESH, from module: Manage Articles
<input type="checkbox"/>	01.08.2006 14:47:40	Depletion store changed (Lobster, fresh)	Depletion store for Lobster, fresh for Beergarden changed from NULL to Main Kitchen"
<input type="checkbox"/>	01.08.2006 14:47:40	Depletion store changed (Lobster, fresh)	Depletion store for Lobster, fresh for Oasis changed from NULL to Dase - Kitchen"
<input type="checkbox"/>	01.08.2006 14:58:59	Article modified	LOBSTER, FRESH, from module: Manage Articles
<input type="checkbox"/>	01.08.2006 14:58:59	Depletion store changed (Lobster, fresh)	Depletion store for Lobster, fresh for Bowling Center changed from Club to Main Kitchen"
<input type="checkbox"/>	01.08.2006 15:00:57	Article modified	LOBSTER, FRESH, from module: Manage Articles
<input type="checkbox"/>	01.08.2006 15:00:57	Depletion store changed (Lobster, fresh)	Depletion store for Lobster, fresh for Franchise Club changed from Club to NULL"

SCHEDULER:



What do we have to know first?

- a) The user right to access the scheduler needs to be active to set up the job.

Module Group	Module/Function	Right	Dep. Right
System	Merge Articles	<input checked="" type="checkbox"/>	<input type="checkbox"/>
Master Data	Refresh Results	<input checked="" type="checkbox"/>	<input type="checkbox"/>
Mobile Solutions	Data Analysis	<input checked="" type="checkbox"/>	<input type="checkbox"/>
Store	Data Base Update	<input checked="" type="checkbox"/>	<input type="checkbox"/>
Store Options	Export Data	<input checked="" type="checkbox"/>	<input type="checkbox"/>
Authorisation	Data Queries	<input checked="" type="checkbox"/>	<input type="checkbox"/>
Purchase	Run Custom Reports	<input checked="" type="checkbox"/>	<input type="checkbox"/>
B2B Solutions	Edit Templates for Custom Reports	<input checked="" type="checkbox"/>	<input type="checkbox"/>
Purchase Analysis	Scheduler	<input checked="" type="checkbox"/>	<input type="checkbox"/>
Permanent Orders	Data Backup/Recovery	<input checked="" type="checkbox"/>	<input type="checkbox"/>
Production	Reorganisation of Oracle Indices	<input checked="" type="checkbox"/>	<input type="checkbox"/>
Yield Management	External Process for Scheduler	<input checked="" type="checkbox"/>	<input type="checkbox"/>
Nutrients			

- b) The user right to access the job needs to be active to set up the job.

Module Group	Module/Function	Right	Dep. Right
System	Consumption Statistics	<input checked="" type="checkbox"/>	<input type="checkbox"/>
Master Data	Request and Transfer Report	<input checked="" type="checkbox"/>	<input type="checkbox"/>
Mobile Solutions	Daily Reception	<input checked="" type="checkbox"/>	<input type="checkbox"/>
Store	Monthly Store Balance Sheet	<input checked="" type="checkbox"/>	<input type="checkbox"/>
Store Options	Daily out of stock	<input checked="" type="checkbox"/>	<input type="checkbox"/>
Authorisation	Quick Booking of Transfers	<input checked="" type="checkbox"/>	<input type="checkbox"/>
Purchase	Out-of-Stock (WEB)	<input checked="" type="checkbox"/>	<input type="checkbox"/>
B2B Solutions	Stand Sheets (WEB)	<input checked="" type="checkbox"/>	<input type="checkbox"/>
Purchase Analysis	Make Individual Issue Request/Transfer	<input checked="" type="checkbox"/>	<input type="checkbox"/>
Permanent Orders	Save Issue Request/Transfer as Li	<input checked="" type="checkbox"/>	<input type="checkbox"/>
Production	Automated Issue Requests	<input checked="" type="checkbox"/>	<input type="checkbox"/>
Yield Management	Transfers on Sales Depletion	<input checked="" type="checkbox"/>	<input type="checkbox"/>
Nutrients			

- c) The description of this function was created with the database version 10.26 and is valid for the program version 8.4.00.

JOB DEFINITION:

Goto System > Scheduler > click on the button “New Job” > select the job “Transfer on Sales” from the list:

Option: Define New Scheduled Job

B/O Export	Inventory Job	Check/update Prices	Refresh COS of Recipes	Automated Issue Requests
External Process	Issue Request	Export SQL	Export ASCII	Booking Journal
New Job	Backup Database	Read/Book Revenue	BIIB	Budget Maintenance

Job Type: **Transfer on Sales**

Start (Date/Time): 01.08.2006 16:31

☐ Start Up
☒ Once
☐ Periodic all: 1 Days
☐ Always on: End of Month

Parameter:

Run Service:
☒ Under System Context
☐ As User:
 User: jltrommeschlaeger
 Password:
 Domain: WXPJTLAP

OK Cancel

Now define the start time and the periodic settings. This job should run after the POS revenue import & booking.

Save the job and ensure that the DGService is started/running.

The system will now book the necessary transactions / transfers when executing this job. The system will create the article in the target store if it was not existing before.

Note: Please make sure that the job is stopped during inventory booking / closing!

LOGFILES:

After execution of the job the system generates a logfile in the directory \Materials Control\Log\:

The files are named GEN_TSnnn.LOG where nnn is a sequential numbering.

```

2006.08.01 13:34:59-Admin - -*-----*
2006.08.01 13:34:59-Admin - -* Transfers on Sales
2006.08.01 13:34:59-Admin - -*-----*
2006.08.01 13:34:59-Admin - -Start: 01.08.2006 13:34
2006.08.01 13:34:59-Admin - -*-----*
2006.08.01 13:34:59-Admin - -*-----*
2006.08.01 13:35:00-Admin - -TR-06-08-01-00001 generated
2006.08.01 13:35:00-Admin - -*-----*
2006.08.01 13:35:00-Admin - -Generating OK
  
```


2006.08.01 13:35:00-Admin - -End: 01.08.2006 13:35

REPORTING:

These transactions can be reviewed in the reports as usual transfers. The detail records will show the information that it was created because of the defined Depletion Rules.

Examples:

Transfers:

Transfer Management

File Edit Store Master Data Help

Transfer Open Transfer

Overview Edit Transfer Manage Store Requirements Edit Picking List

All Transfers, Period from 01.08.2006 to 31.08.2006, Booked

A	C	Cost Center/Store	Transfer To	Document	Date	Status <<	Info
		Main Kitchen	Grill Restaurant	TR-06-08-01-00001	01.08.2006	Booked	Automated Transaction based on Depletion Rules
		Dase - Kitchen	Main Kitchen	TR-06-08-03-00002 (Das	03.08.2006	Booked	Created By Admin At 2006-08-03 12:15:56:548888

Packing List Quick Booking Batch List Assign Batches

Article History:

Article History

File Edit Store Master Data Help

Article History

Main Kitchen; From 01.08.2006 to 31.08.2006; All Tran

Booking Date	Type	Article
03.08.2006 12:17:25	TR	Acteo Balsami
01.08.2006 13:35:00	TR	Brot, Toast kg
03.08.2006 12:17:25	TR	Brot, Toast kg
01.08.2006 13:35:00	TR	Butter KG
03.08.2006 12:17:25	TR	Butter KG
03.08.2006 12:17:25	TR	Cheese Gouda
03.08.2006 12:17:25	TR	Ketchup Heinz
03.08.2006 12:17:25	TR	Mushrooms / C
01.08.2006 13:35:00	TR	Salami KG
03.08.2006 12:17:25	TR	Salami KG
03.08.2006 12:17:25	TR	Tomatoes kg

Article History

Type TR

Article Salami KG

Date 01.08.2006 13:35:00

ACT SOH 23,3 Price 0,890

QTY Price S.Price

-0,12 0,890 0,00

COS ID1/ID 2 977

Transfer TR-06-08-01-00001 From '01.08.2006' Automated Transaction based on Depletion Rules Moved to Grill Restaurant

Created by Admin at 01.08.2006 13:35

Changed by Admin at 01.08.2006 13:35

OK Cancel

S.Price	Document	Date	Tran
0,00	03.08.2006	Tran	
0,00	01.08.2006	Tran	
0,00	03.08.2006	Tran	
0,00	01.08.2006	Tran	
0,00	03.08.2006	Tran	
0,00	03.08.2006	Tran	
0,00	03.08.2006	Tran	
0,00	03.08.2006	Tran	
0,00	01.08.2006	Tran	
0,00	03.08.2006	Tran	
0,00	03.08.2006	Tran	

Exceptions / Special Cases:

There are some exceptions which have to be considered when using this feature:

- Similar as the stock reduction through the POS interfaces this feature **ignores** the parameter NONEGATIVESTOCK. The system will book to negative SOH in case of insufficient stock on hand!
- If one or more of the articles which should be transferred is marked as "HACCP" article and the source store or the target store is marked as "Batch Processing" the transfer will be created and saved as "Open Transfer", but not booked automatically!
- If a different store was assigned to the product / sales article already (Production > Products > "Change Store") the depletion rule will be **ignored!**
- Inventory Booking: Make sure that this job does not run during inventory closing!
- This function can not check whether the store was already closed after an inventory or not!