



Installing the Workstation 5 Wireless Kit

The Workstation 5 Wireless Kit Revision A uses a 802.11 b/g wireless card from Abocom, replacing the EZAIX card.

To use the Abocom card, Windows CE Platform Software GR1.2 with MICROS Build Version G6.04 is required.

Two antenna options are provided. The pair of internal printed circuit antennae provide excellent coverage in most situations. Optionally, you can install the enclosed panel mount SMA connector, and supply an external antenna with mating SMA connector.

Open the Workstation

Refer to Figure 1.

1. Remove all cables from the IO panel including the AC power cable.
2. Place a towel or soft cloth on your work surface to protect the touchscreen, then place the workstation face down.
3. Loosen the pair of captive screws that hold the top cover in place.
4. Return the unit to its normal operating position. Lift the front of the cover up and the back of the cover will release.
5. Remove the screw that fastens the

LCD/Touchscreen assembly to the base.

6. Lift the front of the LCD/Touchscreen assembly up about one inch, then pull it forward slightly to clear the base while at the same time placing the assembly to the right side of the base.
7. Remove the LCD, Backlight and Touchscreen Interface Cables from the system board and place the LCD/Touchscreen assembly aside.

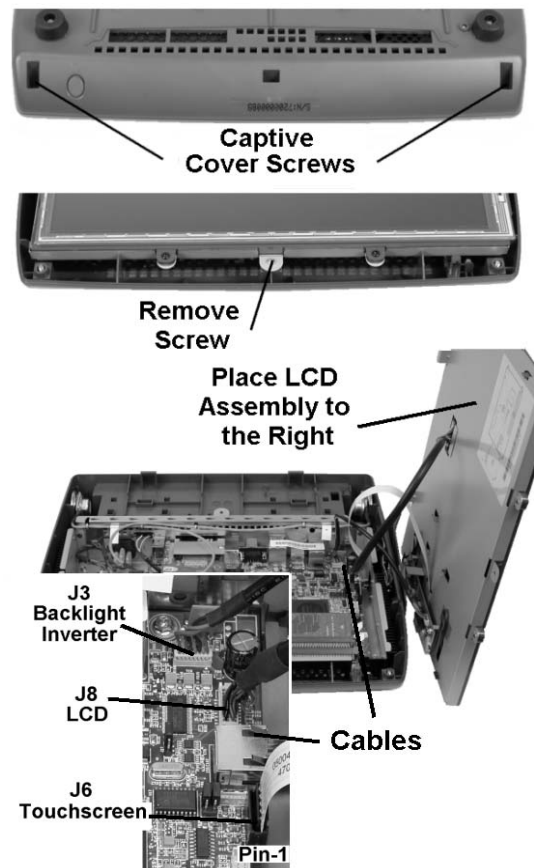


Figure 1: Removing the Workstation Cover

MD0013-005B

Revision B

Page 1 of 4

Install the Wireless Card

8. Install the Abocom Mini-PCI Card. The socket is located near the center of the system board. Refer to Figure 2, below.

Insert Card at 30° Angle

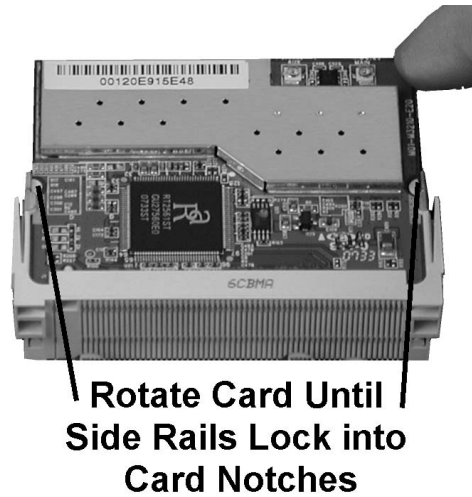
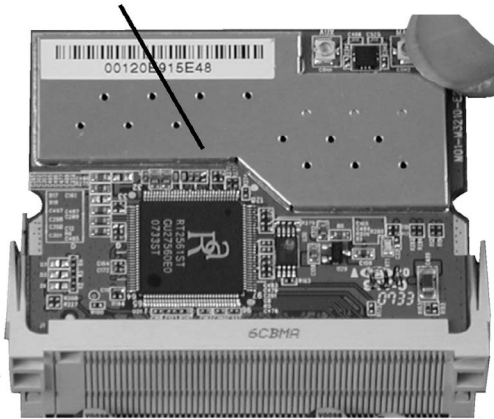
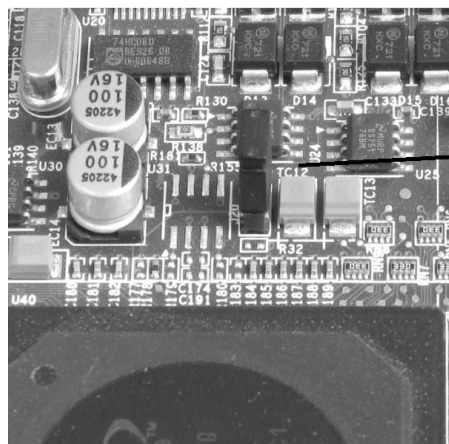


Figure 2: Installing the Abocom Mini-PCI Wireless Card

- Begin by inserting the card at a 30 degree angle relative to the socket as shown at the left of Figure 2. When the card is fully seated, rotate it downward until the side rails of the socket lock the card in place, as shown at the right of Figure 2.
9. Install the enclosed 2-Pin header on J20, located to the right of the Mini-PCI Socket, near the LX800 Processor. See Figure 3, below.



**Install
Enclosed
2-Pin
Header
on J20**

Figure 3: Installing the PCI Bus Speed Jumper

- 10.** To install the internal printed circuit antennae, continue with Step 11 below.
To install the panel mount SMA connector for use with an external antenna provided by the installer, see Step 13.

Installing the Printed Circuit Antennae

The Workstation 5 base includes mounting points for the printed circuit antennae, located behind each speaker.

- 11.** Refer to the upper left of Figure below. Orient the antenna as shown and slide it into the notches provided at the right side of the base. Repeat this step and install the second antenna in the left side of the base.

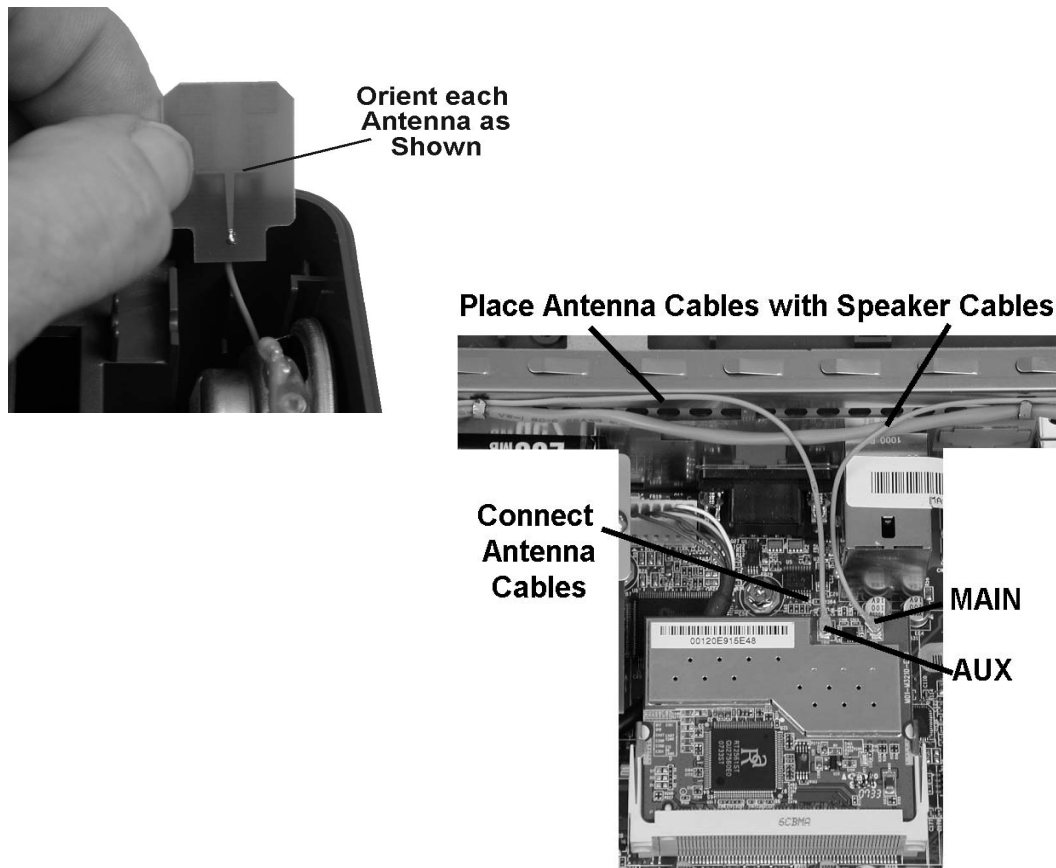


Figure 4: Installing the Printed Circuit Antennae

- 12.** Refer to the lower right side of Figure 4. Connect each antenna cable to the wireless card. Note: it may be easier to install the antenna connectors when the wireless card is at a 30 degree angle. Place each antenna cable into the same 'hooks' used to hold the speaker cables.

Installing the Panel Mount SMA Connector

The SMA panel mount connector is used in place of the supplied internal antennae with an external wireless antenna supplied by the installer.

13. Insert the SMA connector into the 'ANT' cut-out in the IO Panel. Refer to Figure 5, and install the lock washer and nut, then fasten securely.
14. Attach the antenna cable to the 'Main' terminal in the wireless card.

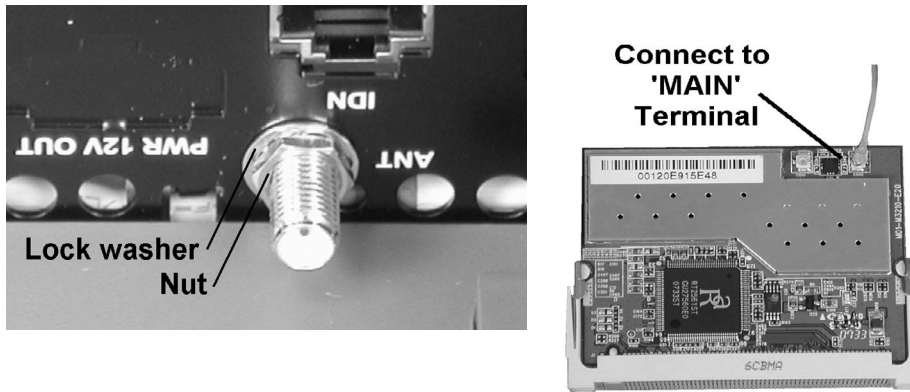


Figure 5: Installing the IO Panel Mount SMA Connector

Replace the Workstation Cover

To reassemble the workstation, reverse the steps performed to remove the cover while referring to Figure 1.

1. Install the LCD, Backlight, and Touchscreen Interface Cables as shown in Figure 1. Note the location of Pin-1 on the Touchscreen cable.
2. Install the LCD/Touchscreen Assembly in the base and fasten the single screw.
3. Check the gasket located in the cover to ensure it is seated properly then install the cover by attaching it to the rear of the base first. Place the unit face down and tighten the captive screws to secure the cover.
4. Re-cable the workstation as required and power-up.

Configuration

1. The Abocom wireless card drivers are part of Software Platform RC 1.4 (NK.BIN G6.03).
2. Configure the security settings as required by your site to associate with the desired wireless Access Point.