

Reports DSN Entries Utility  
Oracle FLEXCUBE Investor Servicing  
Release 12.1.0.0.0  
[October] [2015]



---

# Table of Contents

<b>1.</b>	<b>DSN ENTRIES UTILITY .....</b>	<b>1-1</b>
1.1	INTRODUCTION .....	1-1
1.2	SETTING UP DSN ENTRIES.....	1-1

# 1. DSN Entries Utility

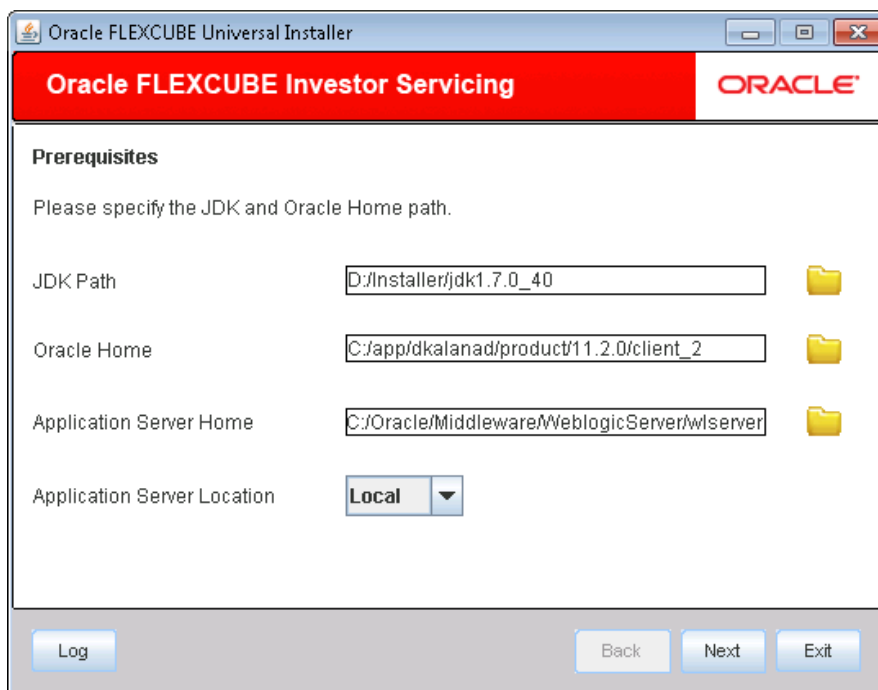
## 1.1 Introduction

This chapter explains the steps to set up the reports DSN entries using Oracle FLEXCUBE Investor Servicing Installer.

## 1.2 Setting up DSN Entries

In order to setup the DSN entries, follow the steps given below.

Start Oracle FLEXCUBE Investor Servicing Installer.



Specify the following details:

### JDK Path

Specify the location of the JDK. You can use the directory button to browse to the JDK location.

### Oracle Home

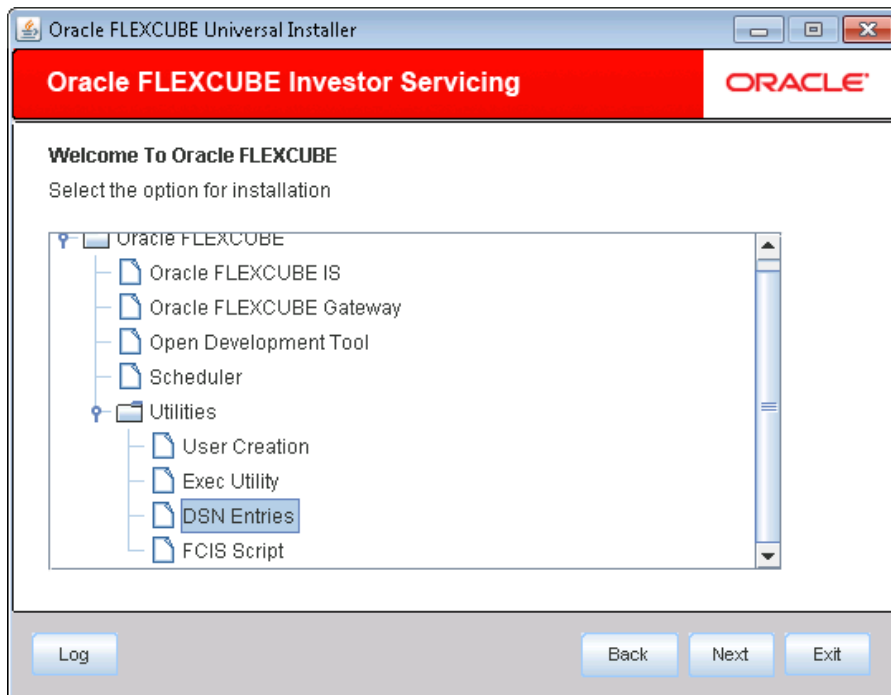
Specify the location of the Oracle Home installation. You can use the directory button to browse to the location.

### Application Server Home

Specify the location of the application server.

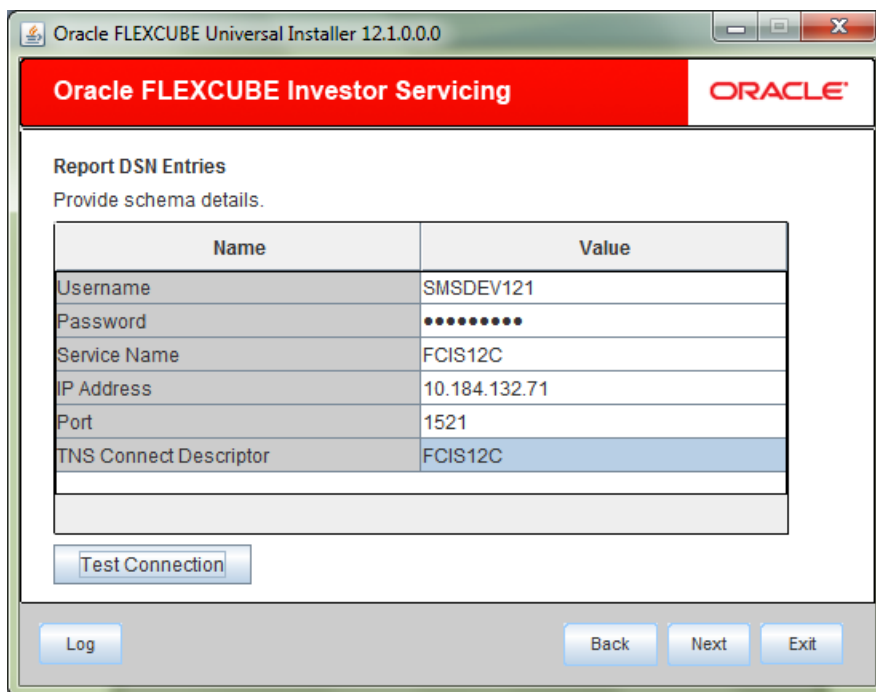
**Note:** In case any of the selected directories is incorrect, the Installer will display an appropriate error message. In that case, you need to correct the directory path and proceed.

Click 'Next'. The following screen is displayed.



Select 'DSN Entries' and click 'Next'.

The following screen is displayed.



**Oracle FLEXCUBE Investor Servicing** ORACLE

**DSN Entries Schema Details**  
Provide schema details.

Name	Value
Username	test
Password	*****
Service Name	test
IP Address	10.10.10.10
Port	1234
TNS Connect Descriptor	test

Test Connection

Log Back Next Exit

Specify the following schema details:

**User Name**

Specify the user name to access the schema.

**Password**

Enter the schema password.

**Service Name**

Provide service name of Database.

**TNS Connect Descriptor**

Specify a valid connect string that contains the details for database connectivity.

**IP Address**

Specify the IP address of the system where the database schema is installed.

**Port**

Specify the port number.

Once you have entered the details, you can test the database schema connection using 'Test Connection' button.

**Note:**

- If the connection is established, the installer displays a message 'Connection Successful'.

- If there is an error in establishing the connection, the system displays the message 'Invalid DB Credentials'.
- If the TNS entry is not proper, the installer displays the message 'TNS entries are not proper'.

After testing the connection successfully, click 'Next'. The following screen is displayed.

**DSN Entries**  
Enter the DSN entries.

**Symmetric Key**

**DSN Name**  **Details**

**JNDI Name**

No.	Name	Value
1	Database Type	
2	Database Driver	
3	Database Name	
4	IP Address	
5	Port	

**Log** **Back** **Next** **Exit**

Specify the following details:

#### **Symmetric key**

Specify the Symmetric key.

#### **DSN Name**

Specify the DSN name.

#### **JNDI Name**

Specify the JNDI name.

#### **Database Type**

Specify the database type.

#### **Database Driver**

Specify the database driver.

#### **Database Name**

Specify the name of the database.

### IP Address

Specify the IP address of the system where the database schema is installed.

### Port

Specify the port number.

### Database User Name

Specify the user name to access the database.

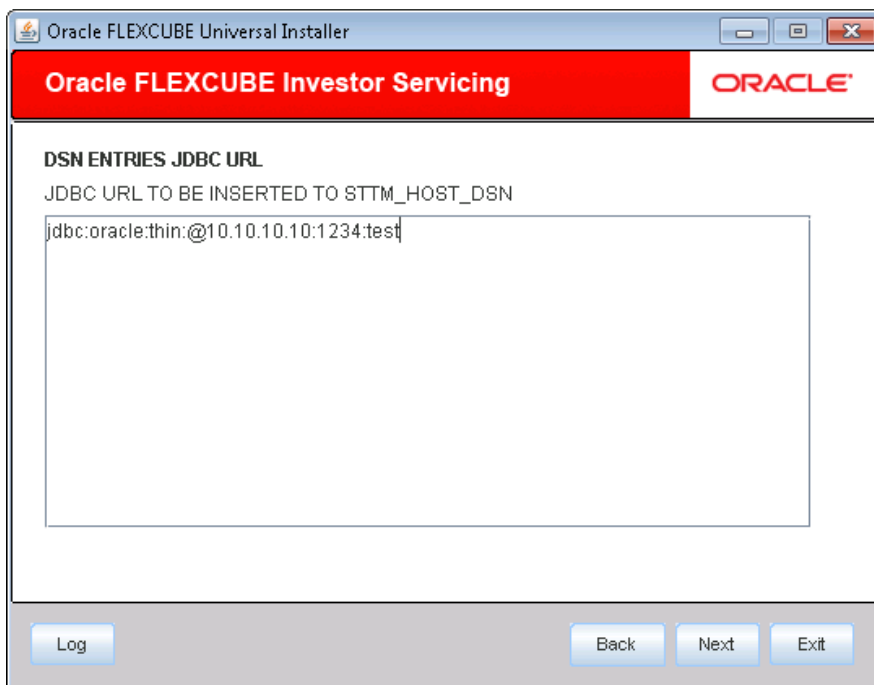
### Database Password

Specify the password to access the database.

1.2.4 Once the details are inserted click next .The following screen is displayed.

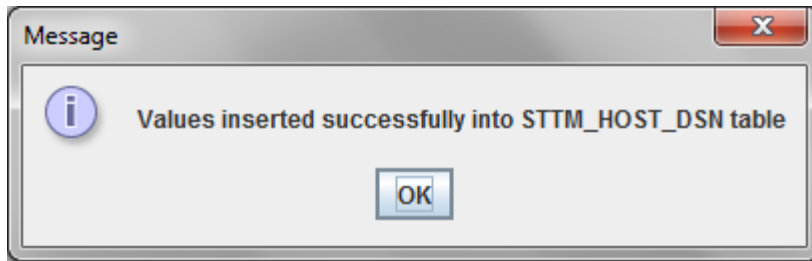
If it's an existing entry then, click on Get Details button. The values are shown and the same can be updated.

If a new entry is given then, it will be an INSERT. If existing, it's UPDATE.

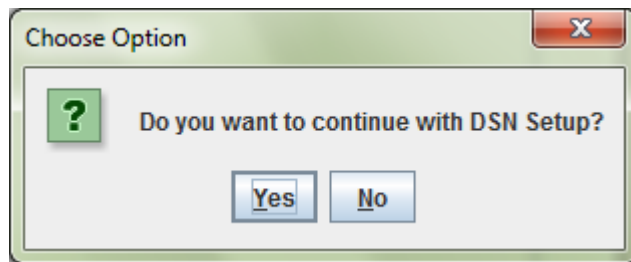


The screenshot shows the 'Oracle FLEXCUBE Universal Installer' window. The title bar includes the Oracle logo and window controls. The main window has a red header bar with 'Oracle FLEXCUBE Investor Servicing' and the 'ORACLE' logo. Below the header, the text 'DSN ENTRIES JDBC URL' is displayed. Underneath, it says 'JDBC URL TO BE INSERTED TO STTM\_HOST\_DSN'. A large text area contains the text 'jdbc:oracle:thin:@10.10.10.10:1234:test'. At the bottom of the window, there are four buttons: 'Log', 'Back', 'Next', and 'Exit'.

For the RAC data source the JDBC URL needs to be manually edited. Up on Clicking Next below Message will be shown.



Click Ok then below confirmation dialog will be shown



If Yes is chosen, it would come from the schema details screen(1.2.2) for additional entries to be added.





Reports DSN Entries Utility  
[October] [2015]  
Version 12.1.0.0.0

Oracle Financial Services Software Limited  
Oracle Park  
Off Western Express Highway  
Goregaon (East)  
Mumbai, Maharashtra 400 063  
India

Worldwide Inquiries:  
Phone: +91 22 6718 3000  
Fax: +91 22 6718 3001  
[www.oracle.com/financialservices/](http://www.oracle.com/financialservices/)

Copyright © [2007], [2015], Oracle and/or its affiliates. All rights reserved.

Oracle and Java are registered trademarks of Oracle and/or its affiliates. Other names may be trademarks of their respective owners.

**U.S. GOVERNMENT END USERS:** Oracle programs, including any operating system, integrated software, any programs installed on the hardware, and/or documentation, delivered to U.S. Government end users are "commercial computer software" pursuant to the applicable Federal Acquisition Regulation and agency-specific supplemental regulations. As such, use, duplication, disclosure, modification, and adaptation of the programs, including any operating system, integrated software, any programs installed on the hardware, and/or documentation, shall be subject to license terms and license restrictions applicable to the programs. No other rights are granted to the U.S. Government.

This software or hardware is developed for general use in a variety of information management applications. It is not developed or intended for use in any inherently dangerous applications, including applications that may create a risk of personal injury. If you use this software or hardware in dangerous applications, then you shall be responsible to take all appropriate failsafe, backup, redundancy, and other measures to ensure its safe use. Oracle Corporation and its affiliates disclaim any liability for any damages caused by use of this software or hardware in dangerous applications.

This software and related documentation are provided under a license agreement containing restrictions on use and disclosure and are protected by intellectual property laws. Except as expressly permitted in your license agreement or allowed by law, you may not use, copy, reproduce, translate, broadcast, modify, license, transmit, distribute, exhibit, perform, publish or display any part, in any form, or by any means. Reverse engineering, disassembly, or decompilation of this software, unless required by law for interoperability, is prohibited.

The information contained herein is subject to change without notice and is not warranted to be error-free. If you find any errors, please report them to us in writing.

This software or hardware and documentation may provide access to or information on content, products and services from third parties. Oracle Corporation and its affiliates are not responsible for and expressly disclaim all warranties of any kind with respect to third-party content, products, and services. Oracle Corporation and its affiliates will not be responsible for any loss, costs, or damages incurred due to your access to or use of third-party content, products, or services.