

**Oracle® Hospitality e7 Point-of-Sale**  
Release Notes  
Release 4.1 EU  
Part Number: E67881-01

October 2015

Copyright © 2011, 2015, Oracle and/or its affiliates. All rights reserved.

This software and related documentation are provided under a license agreement containing restrictions on use and disclosure and are protected by intellectual property laws. Except as expressly permitted in your license agreement or allowed by law, you may not use, copy, reproduce, translate, broadcast, modify, license, transmit, distribute, exhibit, perform, publish, or display any part, in any form, or by any means. Reverse engineering, disassembly, or decompilation of this software, unless required by law for interoperability, is prohibited.

The information contained herein is subject to change without notice and is not warranted to be error-free. If you find any errors, please report them to us in writing.

If this software or related documentation is delivered to the U.S. Government or anyone licensing it on behalf of the U.S. Government, then the following notice is applicable:

U.S. GOVERNMENT END USERS: Oracle programs, including any operating system, integrated software, any programs installed on the hardware, and/or documentation, delivered to U.S. Government end users are "commercial computer software" pursuant to the applicable Federal Acquisition Regulation and agency-specific supplemental regulations. As such, use, duplication, disclosure, modification, and adaptation of the programs, including any operating system, integrated software, any programs installed on the hardware, and/or documentation, shall be subject to license terms and license restrictions applicable to the programs. No other rights are granted to the U.S. Government.

This software or hardware is developed for general use in a variety of information management applications. It is not developed or intended for use in any inherently dangerous applications, including applications that may create a risk of personal injury. If you use this software or hardware in dangerous applications, then you shall be responsible to take all appropriate fail-safe, backup, redundancy, and other measures to ensure its safe use. Oracle Corporation and its affiliates disclaim any liability for any damages caused by use of this software or hardware in dangerous applications.

Oracle and Java are registered trademarks of Oracle and/or its affiliates. Other names may be trademarks of their respective owners.

Intel and Intel Xeon are trademarks or registered trademarks of Intel Corporation. All SPARC trademarks are used under license and are trademarks or registered trademarks of SPARC International, Inc. AMD, Opteron, the AMD logo, and the AMD Opteron logo are trademarks or registered trademarks of Advanced Micro Devices. UNIX is a registered trademark of The Open Group.

This software or hardware and documentation may provide access to or information about content, products, and services from third parties. Oracle Corporation and its affiliates are not responsible for and expressly disclaim all warranties of any kind with respect to third-party content, products, and services unless otherwise set forth in an applicable agreement between you and Oracle. Oracle Corporation and its affiliates will not be responsible for any loss, costs, or damages incurred due to your access to or use of third-party content, products, or services, except as set forth in an applicable agreement between you and Oracle.

---

---

# Contents

- Tables ..... 4**
- Figures ..... 5**
- Preface ..... 6**
  - Audience .....6
  - Important Information .....6
  - Customer Support.....6
  - Documentation .....6
  - Revision History .....6
- 1 Features and Updates..... 7**
  - mTablet / mStation R-Series Support .....7
  - Touchscreen by Device Type.....8
  - Copy touchscreen buttons .....11
  - Visual style of touchscreen buttons .....12
  - Keyboard button added to the “Network Identification Screen” .....13
  - On Demand Customer Trailer.....14
- 2 System Requirements, Supported Systems, and Compatibility..... 15**
  - Compatible Hardware.....15
  - Supported Workstation Operating Systems.....15
  - Supported Back-Office PC Operating Systems .....15
- 3 Installation and Upgrade..... 16**
- 4 Resolved Issues..... 17**

---

---

# Tables

Table 1 - Device Types .....9

---

---

# Figures

Figure 1 - mTablet R-Series display in portrait and landscape format .....	7
Figure 2 - Payment Touchscreen on 4 different Device Types .....	8
Figure 3 - New "Copy Button" feature.....	11
Figure 4 - New Visual Style for Touchscreen Buttons .....	12
Figure 5 - Keyboard button on Network Identification Screen.....	13

---

---

# Preface

Oracle Hospitality e7 Point-of-Sale is a Restaurant Management System targeting individual restaurateurs in segments like table-service and quick-service restaurants, delis, sandwich shops, bars and more. In addition to the standard POS functionality, e7 Point-of-Sale provides time & attendance, real-time inventory, comprehensive reporting, customer management and can be integrated to the Oracle Hospitality Cloud Services Reporting and Analytics, Gift and Loyalty and Inventory Management.

## Audience

This document is intended for all users of e7 Point-of-Sale.

## Important Information

Before upgrading to version 4.1.EMEA please read the Installation and Upgrade section carefully. The information contained in this release notes pertains to the European Use version of e7.

## Customer Support

To contact Oracle Customer Support, access My Oracle Support at the following URL:  
<https://support.oracle.com>

When contacting Customer Support, please provide the following:

- Product version and program/module name
- Functional and technical description of the problem (include business impact)
- Detailed step-by-step instructions to re-create
- Exact error message received
- Screen shots of each step you take

## Documentation

Oracle Hospitality product documentation is available on the Oracle Help Center at  
<http://docs.oracle.com>

## Revision History

Date	Description of Change
July 24, 2015	<ul style="list-style-type: none"><li>• Initial publication.</li></ul>

---

---

# 1 Features and Updates

This section describes the features and updates included in this release.

## mTablet / mStation R-Series Support

In the previous version support for the “mTablet / mStation R-Series” had been introduced and allows e7 running with the display adjusted in landscape format. In version 4.1.0.EMEA the mTablet support has been extended to support the display adjustment in landscape and portrait format. Rotating the display automatically rotates the user interface accordingly and a proper display template will be automatically detected and applied.

Limitations:

- Concession Terminal only, mTablet has to be fixed in the mStation.
- Mobile operation is not supported.
- Integrated 2” Thermal Printer for mStation is not supported
- Integrated 1D/2D Scanner for mStation is not supported

Please note: Connecting e7 through the WLAN\*, as a peer-to-peer networked system, e7 maintains constant communication between workstations. With the introduction of wireless networking for e7 on the mTablet, it is imperative that customers implement and maintain uninterrupted wireless networking.

We strongly recommend a wireless site survey and professional design of the network architecture and security.

\*Version 1.4 or above of the mTablet platform is required for support of wireless networking on the mTablet R-Series. The platform version PV1.4 is delivered within the installation files.



**Figure 1 – mTablet R-Series display in portrait and landscape format**

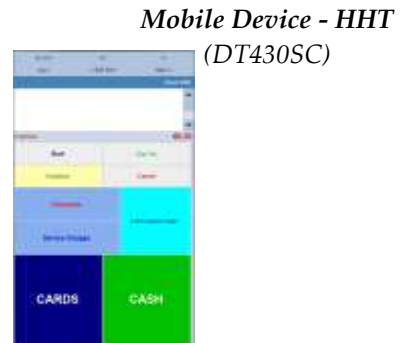
## Touchscreen by Device Type

Regardless of the device type a user is working on, the touchscreen displayed on the screen depends on the touchscreen assignment in the job definition. The consequence is that the user always sees the same touchscreen with the identical touchscreen-button setup on any device. This may cause issues when devices with different screen sizes are in use, like a workstation (15" display), a mobile device (4.3" display) and a tablet (10" display). The touchscreen button-layout may properly setup for a 15" workstation, but were "squeezed" into a 4.3" screen. Or vice versa, a touchscreen button layout properly designed for a mobile device was stretched to fit on 15" screen, and of course wasting space.

To illustrate the result of this new implementation the following is an example of a Payment touchscreen setup for 4 different device types. In the e7 Configurator the Payment touchscreen is configured by using the template "Customizer1":



*Workstation*  
(WS4LX – WS5 – WS5A)



*Tablet Landscape* (mTablet R-Series)



*Tablet Portrait*  
(mTablet R-Series)

**Figure 2 – Payment Touchscreen on 4 different Device Types**



---

### How e7 identifies the proper touchscreen for the device running on?

1. When starting a device, e7 queries the display resolution
  2. Each display resolution is linked to an individual touchscreen template
  3. The touchscreen template is linked to the Device Type
- This method allows e7 automatically identifying the proper touchscreen for the device running on.

### What happens with my existing touchscreens after the update?

Once an update to v4.1.0.EAME is completed and e7 starts up for the first time, the existing touchscreens are linked to the Device type "Workstation". Touchscreens that have been created for HHTs need to be reviewed and the buttons may be aligned.

To accomplish this new feature, 4 new functions related to the e7 user interface have been introduced:

- Device Type selection
- Display resolution recognition
- Touchscreen template assignment by resolution
- Update Touchscreens

### Device Type selection

MICROS e7 has been enhanced in a way that the touchscreen-buttons now can be defined independently by Device Type.

Therefore a new option has been added to the e7 touchscreen designer called "Device Type". The Device Type represents a group of devices with similar display sizes. Currently 4 Device Types are available:

Device Type	Represented Devices
Workstation	WS4LX, WS5, WS5A
Tablet Landscape	mStation R-Series with display in Landscape position
Tablet Portrait	mStation R-Series with display in Portrait position
HHT	DT430SC

**Table 1 – Device Types**

Now 4 individual layouts can be setup for each touchscreen, one for each Device Type. The user will find this new option in the e7 Configurator under →Touchscreens →Device Types

---

### **Display resolution recognition**

When e7 starts up on a device, the display resolution will be queried and automatically detected. Means e7 knows the display resolution of the device where it is running on. There is no user interaction needed for this function.

### **Touchscreen template assignment by resolution**

e7 provides 12 build-in screen templates to create a touchscreen. Each of these 12 templates is available in 10 different resolutions and also optimized for the respective resolution.

Due to the display resolution recognition e7 knows the resolution of the device running on and is able to select the corresponding resolution of the template.

There is no user interaction needed for this function.

### **Update Touchscreens**

This function is just relevant after an update from a version below v4.1.0.EAME or when a new Device Type will be added in a future version.

After a version update is completed, e7 checks for each Device Type if all Touchscreens are configured. If not, the user will be informed with a pop-up message, automatically guided into the Configurator and advised to perform the function "Update Touchscreens". This will occur just once after an update, but only when additional Device Types have been added.

*What happens if the user performs the "Update Touchscreens" function?*

Basically two things, the touchscreens for all new Device Types are created and filled with the touchscreen buttons copied from the Device Type "Workstation".

Now the user can verify the proper arrangement of the touchscreen buttons on the Device Types and align them if necessary.

This new option is located in the e7 Configurator → Touchscreens → Function Menu drop down box.

## Copy touchscreen buttons

In previous versions just a single touchscreen button could be added and deleted in the configurator. To simplify and speed up touchscreen configuration, and also to contribute to the new “Touchscreen Device Type” implementation, three new functions have been added:

- Copy Button: Copies a selected button
- Copy All Buttons: Copies all button of a selected touchscreen
- Paste Button(s): Pasting the copied button(s) into a selected touchscreen

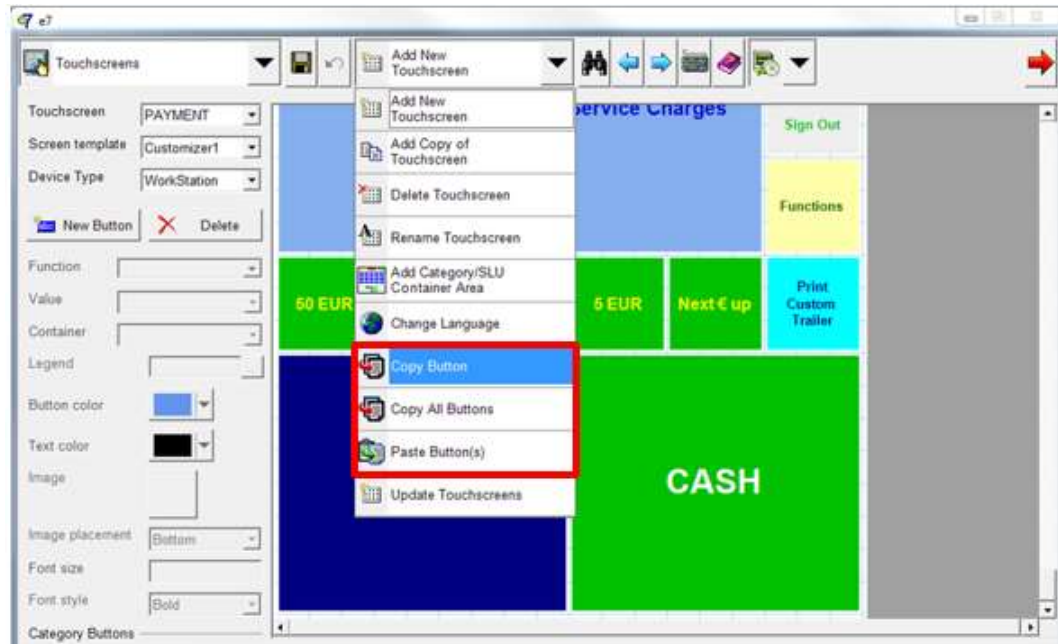


Figure 3 – New “Copy Button” feature

## Visual style of touchscreen buttons

Touchscreen buttons in e7 are displayed in a tiled-style. To give the e7 UI a more state-of-the-art design, a new option has been added to the e7 Configurator under →Workstations →Options →Style. Selections are “Standard” and “Flat”. Standard will display the buttons in a tiled-style; Flat will display the buttons in a “flat-style”

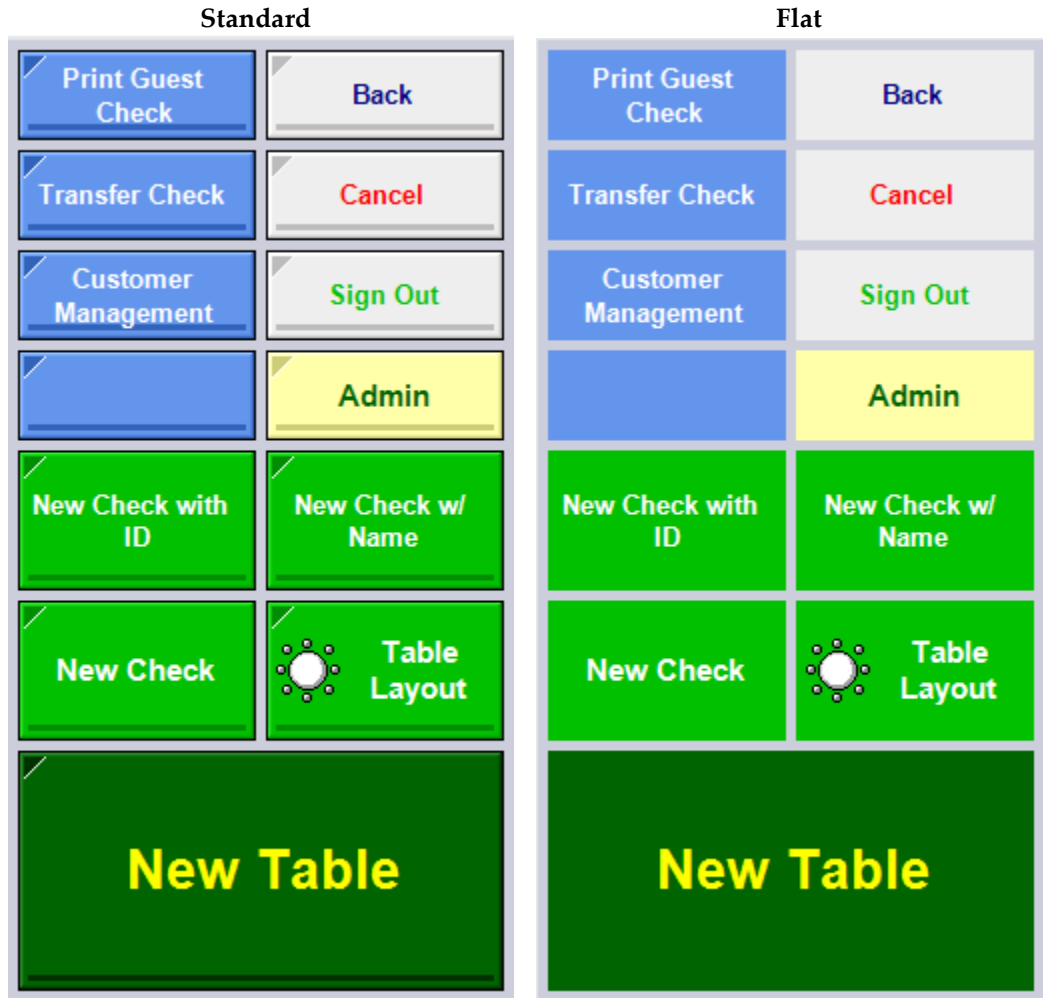


Figure 4 – New Visual Style for Touchscreen Buttons

## Keyboard button added to the “Network Identification Screen”

Installing a new e7 on a workstation requires entering a Network ID before the application starts up the first time. In previous version the user has to connect an external keyboard to enter the ID. With the keyboard button the user can now simply use the On-Screen-Keyboard.

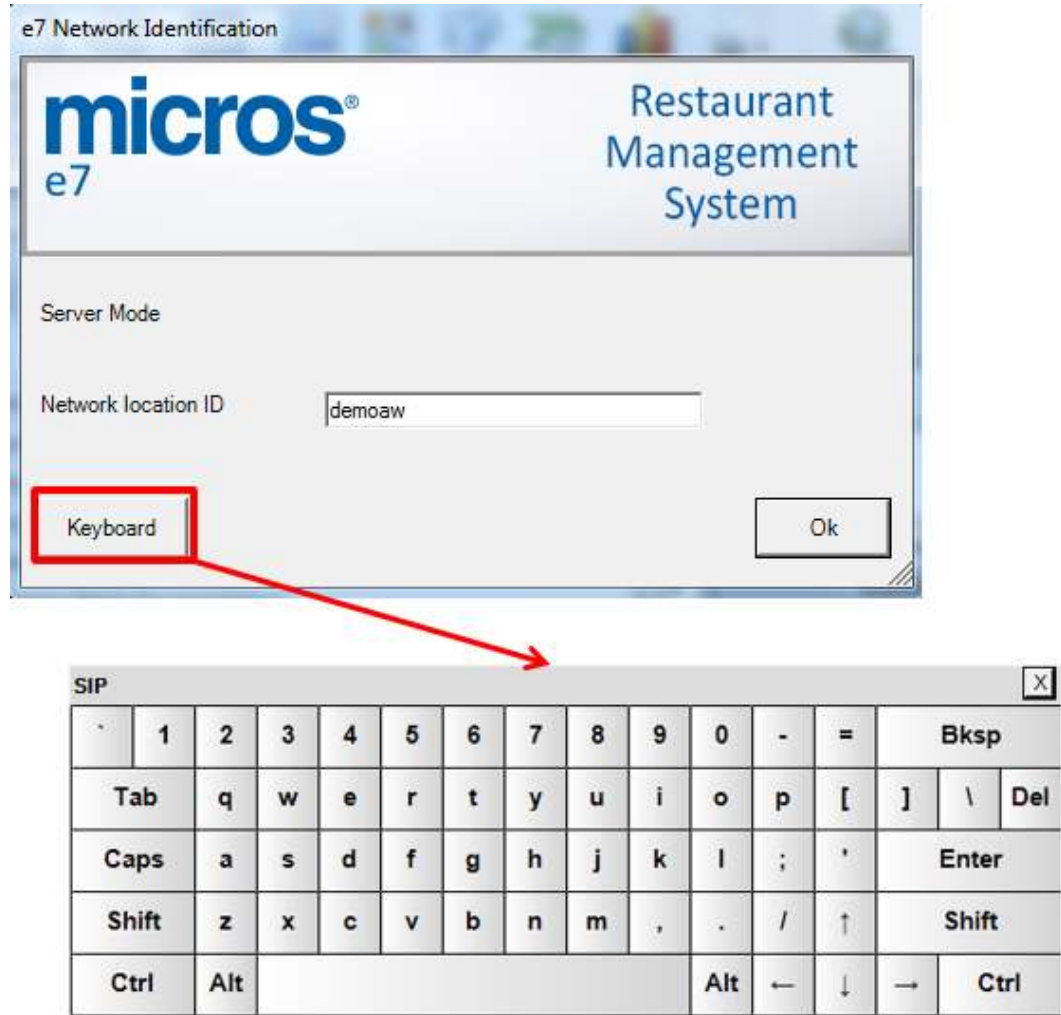


Figure 5 – Keyboard button on Network Identification Screen

---

## On Demand Customer Trailer

The Customer Trailer is used to print a pre-defined trailer in addition to the standard trailer. The content of the Customer trailer is defined a file named "CTrailer.txt" and located in ... \Micros\e7\Bin\...

In previous versions the Customer Trailer were printed either automatically once a total due threshold is reached or the user conforms to print. This functionality remains and has been extended by an "On Demand" function.

The On Demand function requires the user to press the "Custom Trailer On Demand" button on the touchscreen to print a check with a Customer Trailer.

---

---

## 2 System Requirements, Supported Systems, and Compatibility

### Compatible Hardware

*Stationary POS Devices:*

Workstation 4 LX, Workstation 5, Workstation 5A

*Portable POS Devices:*

mTablet R-Series

*Mobile POS Devices:*

WebDT 430SC

*Thermal Printer*

Epson: TM-T88IV, TM-T88V with Serial, IDN or Ethernet interface

Bixolon: SRP350plus, SRP350plusII, SRP350plusIII with Serial or Ethernet interface

Bixolon: SRP350, SRP350II, SRP350III with Serial interface

*Impact Printer:*

Epson: TM-U220B with Serial, IDN or Ethernet interface

Bixolon: SRP275, SRP275II with Serial or Ethernet interface

*Guest Check Slip Printer*

Epson: TM-U295 with Serial interface

*Mobile Printer*

Bixolon: SPP-R200, SPP-R200II, SPP-R300 with Bluetooth or WLAN interface

*Scanner*

Symbol: LS2208 with Serial interface

*Cash Drawer:*

APG: Series 4000, Series 100, Vasario, Flip-Top with DIN connector Series-1 or Series-2

### Supported Workstation Operating Systems

Windows CE6.0 R3, POSReady 2009, Windows EC 7,

### Supported Back-Office PC Operating Systems

Windows Vista Business Edition (32bit), Windows 7 Professional (32bit/64bit), Windows 8 Professional (32bit/64bit)

---

---

## 3 Installation and Upgrade

Please refer to the “Installation Guide 4.1.EMEA” for instructions and information pertaining to install or upgrade to version 4.1.0.EAME on a deployment environment.

Please keep in mind, when upgrading from version 3.x to version 4.x it is essential to upgrade to version 4.0.0.8.EMEA first and then to any higher 4.x version.



## 4 Resolved Issues

Module	SCR	Description
Configurator	326	<p>In the e7 Configurator are several areas where the sorting sequence of the records matters, like Headers, Trailers (complete list below). When a user starts editing the records in one of this areas the sort sequence get messed.</p> <p>Affected areas:</p> <ul style="list-style-type: none"> <li>• Menu Items &gt; Attachments</li> <li>• Menu Items &gt; Modifiers</li> <li>• Tracking Groups &gt; Tracking Groups Detail</li> <li>• Autosequences &gt; Steps</li> <li>• Restaurant &gt; Guest Check Summary</li> <li>• Headers &gt; Header Lines</li> <li>• Trailer &gt; Trailer Lines</li> </ul>
Workstation Windows CE	325	<p>Installations with a high check volume reported that the WinCE workstation requires a long time to start up. This has already been corrected in a hot fix of the previous version (HotFix_01_v4.0.3.3.EAME) and has been implemented in v4.1.EAME</p>
Reports	307	<p>Check number exceeding 9999 were displayed in Reports as "XXXX"</p>
Configurator	303	<p>Using the Configurator function "Add Copy of Employee" fails and brings up an error message.</p>
Configurator	284	<p>When starting e7 with an empty database and then retrieving a database from another node the following error message appeared "Workstation not properly configured". The workaround was to restart e7. Now the issue has been fixed.</p>
Configurator	255	<p>When deleting a touchscreen button in the e7 Configurator by using the delete-key on an external keyboard, the button disappears in the configurator but still visible in operations.</p>
Report Plus	174	<p>The Report Plus module shows incorrect data for merged guest checks.</p>
Report Plus	166	<p>The Report Plus module shows incorrect data for split guest checks.</p>