

**ORACLE<sup>®</sup>**

---

**PRIMAVERA**

**New Features in Primavera Analytics 16.1**

---

## **COPYRIGHT & TRADEMARKS**

Copyright © 2016, Oracle and/or its affiliates. All rights reserved.

Oracle is a registered trademark of Oracle Corporation and/or its affiliates. Other names may be trademarks of their respective owners.

This software and related documentation are provided under a license agreement containing restrictions on use and disclosure and are protected by intellectual property laws. Except as expressly permitted in your license agreement or allowed by law, you may not use, copy, reproduce, translate, broadcast, modify, license, transmit, distribute, exhibit, perform, publish or display any part, in any form, or by any means. Reverse engineering, disassembly, or decompilation of this software, unless required by law for interoperability, is prohibited.

The information contained herein is subject to change without notice and is not warranted to be error-free. If you find any errors, please report them to us in writing.

If this software or related documentation is delivered to the U.S. Government or anyone licensing it on behalf of the U.S. Government, the following notice is applicable:

### **U.S. GOVERNMENT RIGHTS**

Programs, software, databases, and related documentation and technical data delivered to U.S. Government customers are "commercial computer software" or "commercial technical data" pursuant to the applicable Federal Acquisition Regulation and agency-specific supplemental regulations. As such, the use, duplication, disclosure, modification, and adaptation shall be subject to the restrictions and license terms set forth in the applicable Government contract, and, to the extent applicable by the terms of the Government contract, the additional rights set forth in FAR 52.227-19, Commercial Computer Software License (December 2007). Oracle USA, Inc., 500 Oracle Parkway, Redwood City, CA 94065.

This software is developed for general use in a variety of information management applications. It is not developed or intended for use in any inherently dangerous applications, including applications which may create a risk of personal injury. If you use this software in dangerous applications, then you shall be responsible to take all appropriate fail-safe, backup, redundancy and other measures to ensure the safe use of this software. Oracle Corporation and its affiliates disclaim any liability for any damages caused by use of this software in dangerous applications.

This software and documentation may provide access to or information on content, products and services from third parties. Oracle Corporation and its affiliates are not responsible for and expressly disclaim all warranties of any kind with respect to third party content, products and services. Oracle Corporation and its affiliates will not be responsible for any loss, costs, or damages incurred due to your access to or use of third party content, products or services.

**NOTE: Duplication or distribution of this document without written permission from Oracle Corp. is prohibited.**

---

# CONTENTS

- New Features in Primavera Analytics 16.1.....1**
- Space Management Subject Area.....2
- Facilities and Real Estate Dashboard .....3
- Role Utilization Subject Area.....4
- Role Utilization Dashboard Page .....5
- Additional Enhancements.....6

# New Features in Primavera Analytics 16.1

Enhancements to Primavera Analytics 16.1 enable you to gain new insight into P6 and Unifier data:

- Space Management analysis subject area (Unifier)
- Facilities and Real Estate dashboard (Unifier)
- Role Utilization subject area (P6)
- Role Utilization dashboard (P6)
- Improved support for multiple data sources and updated user interface

The screenshot displays the Primavera Analytics 16.1 user interface. The main dashboard is titled "05. Facilities and Real Estate" and features a "Space Management" overview. On the left, there are four summary cards for area measurements:

- Gross Building Area: 866,000 Square Feet
- Floor Rentable Area: 271,050 Square Feet
- Floor Usable Area: 83,615 Square Feet
- Floor Common Area: 187,000 Square Feet

The central part of the dashboard includes a map of the United States and a "US STATES" bar chart. A secondary window titled "05. Resource Analysis" is overlaid, showing a "Role Utilization" dashboard with a bar chart and a table of resource utilization data.

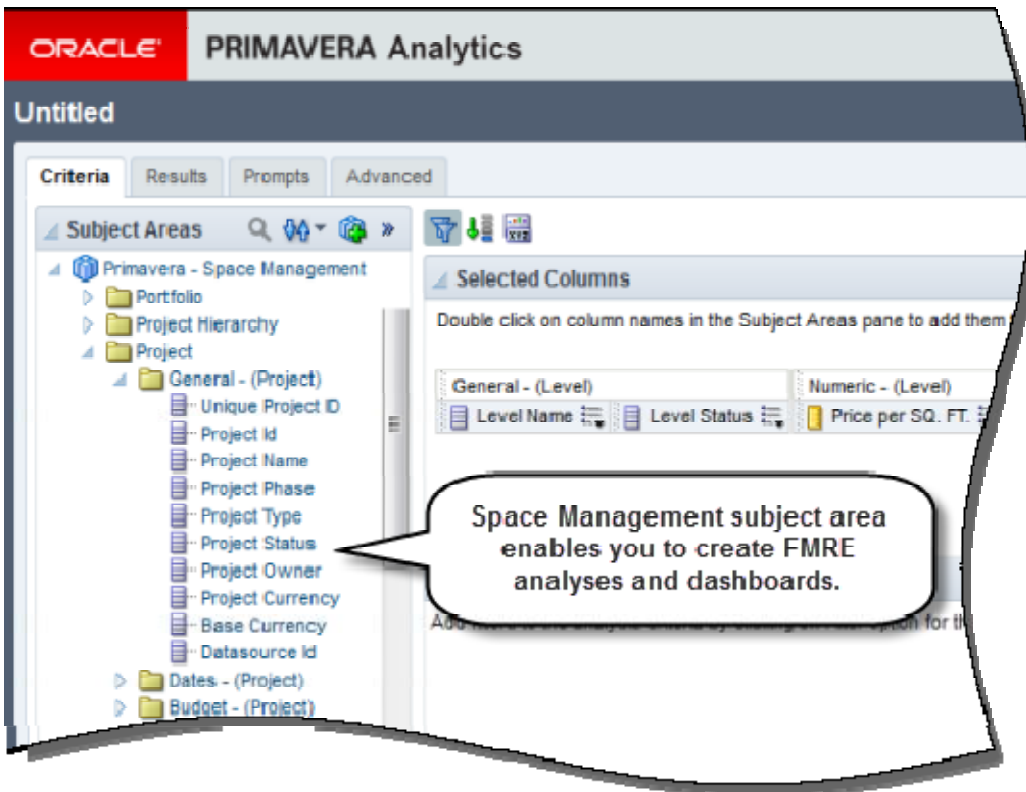
Role Name	Limit (hours)	Planned (hours)	Remaining (hours)
Engineer	1584.00	485.00	485.00
Lead Engineer	304.00	125.00	125.00
Lean Six Sigma Specialist	1468.00	354.00	264.00
Market Manager	4960.00	335.50	285.50
		50	694.00
			135.00
			138.50
			296.00

A callout box with a speech bubble contains the text: "Analytics 16.1 brings analytics to property management and adds role utilization to resource analysis."

---

# Space Management Subject Area

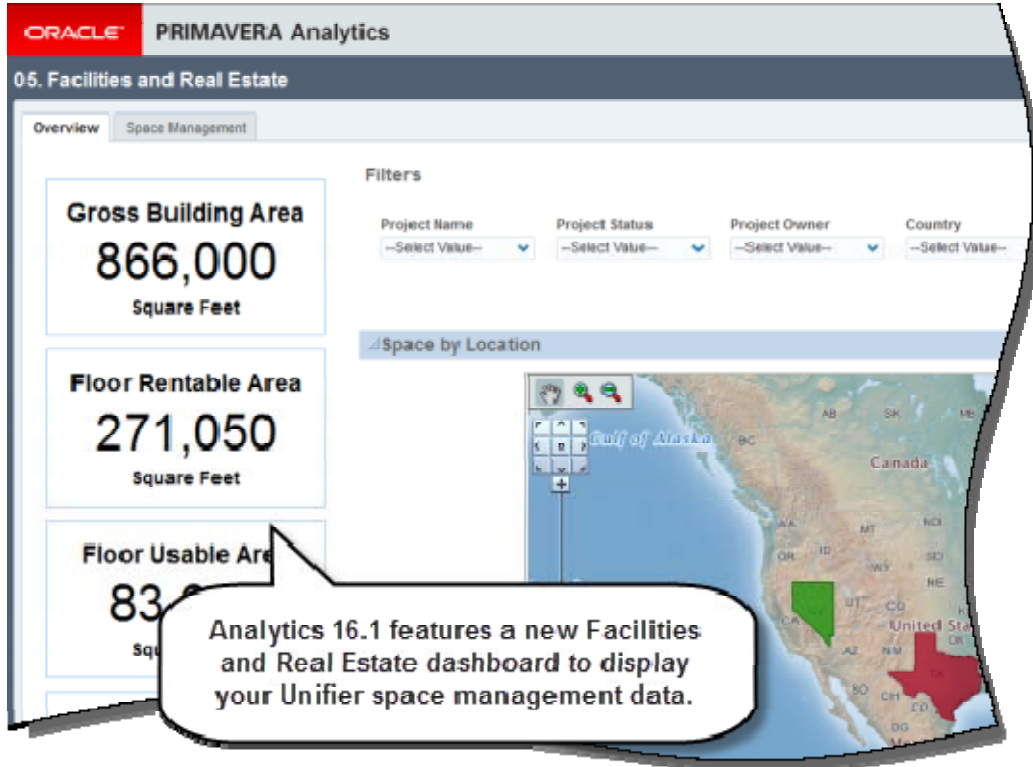
Primavera Analytics 16.1 provides a new analysis subject area, Space Management, to support Unifier Facilities Management and Real Estate data and enable you to create FMRE analyses and dashboards.



**To access this feature:** On the New menu, click Analysis, and then select the Primavera-Space Management subject area.

# Facilities and Real Estate Dashboard

A new Facilities and Real Estate dashboard displays multiple graphs and charts based on Unifier space management data. The first page of the dashboard provides overview information; the second page displays information based on more narrowly focused analyses. Use the dashboard as-is with your Unifier data, modify the charts and graphs, or use them as a starting point for creating your own analyses.

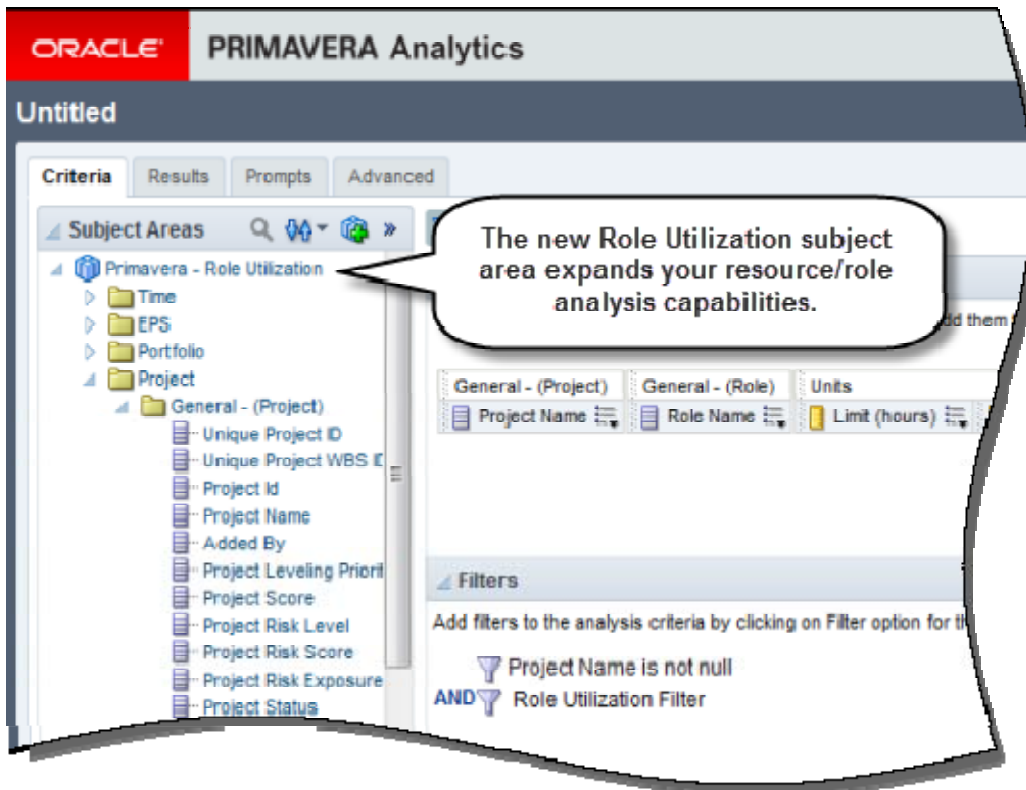


**To access this feature:** On the Dashboards menu, click Facilities and Real Estate.

---

## Role Utilization Subject Area

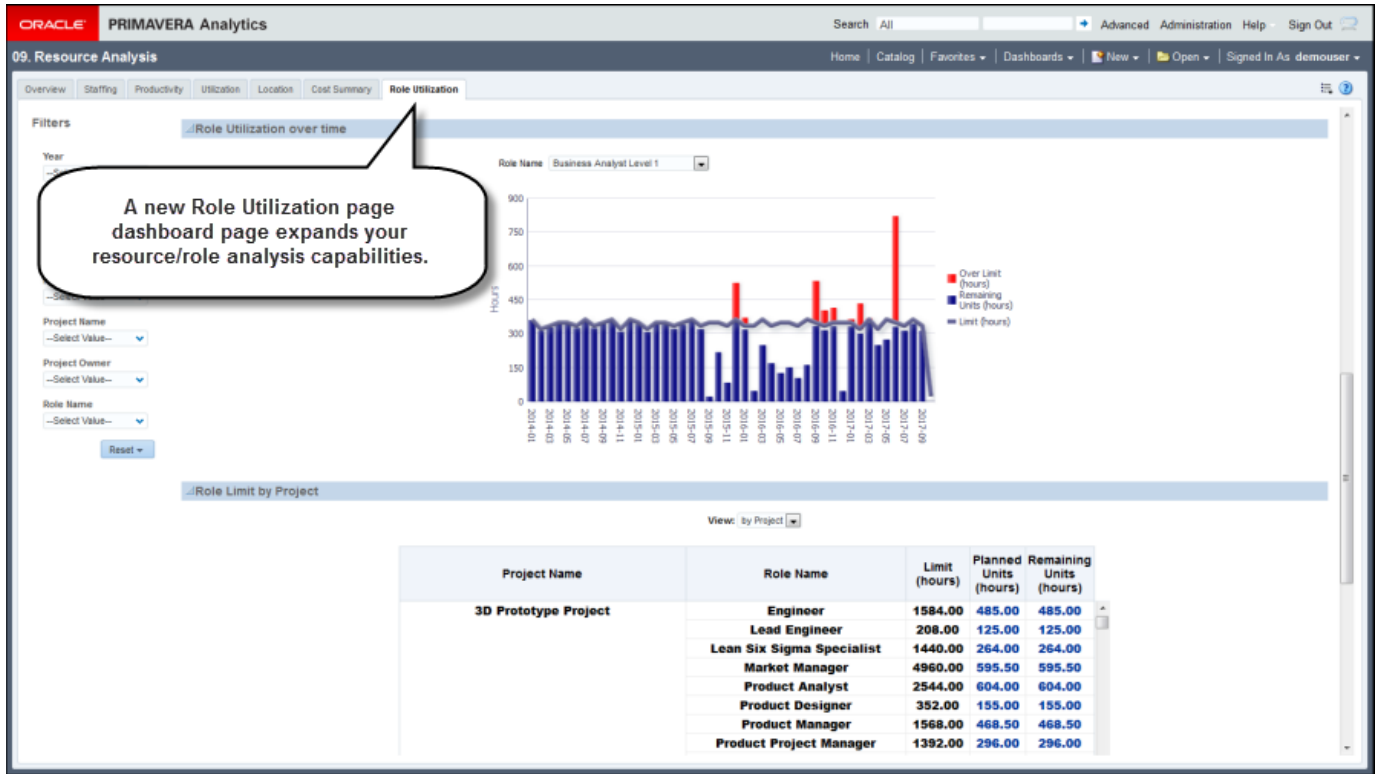
Primavera Analytics 16.1 provides a new subject area, Role Utilization, that enables you to incorporate role utilization data in analyses and dashboards.



**To access this feature:** On the New menu, click Analysis, and then select the Role Utilization subject area.

# Role Utilization Dashboard Page

Primavera Analytics 16.1 offers a new Role Utilization page on the Resource Analysis dashboard, providing a new perspective on P6 data.



**To access this feature:** On the Dashboards menu, select Resource Analysis. Once the dashboard opens, click the Role Utilization tab.



---

## Additional Enhancements

**Blue Sky User Interface:** Primavera Analytics 16.1 adopts the Blue Sky user interface to align the application with other Oracle Primavera products.

**Improved Support for Multiple Data Sources:** An improved Data Warehouse Configuration Utility (on-premise client configuration only) in Primavera Analytics 16.1 helps administrators more easily set up and manage multiple data source inputs to the STAR database.

**Oracle Business Intelligence (OBI) 12c Support:** In addition to OBI 11g, Primavera Analytics 16.1 also supports OBI 12c, which provides enhancements across the entire OBI platform as well as Data Visualization -- a new content creation tool that enables users to build dashboards using a drag-and-drop interface and to combine existing Analytics subject areas with external data uploaded by the user. Samples for Data Visualization are included with Analytics 16.1 along with upgraded versions of the same catalog and Repository Definition file (.rpd) that are provided for OBI 11g. Data Visualization is available only to on-premise customers and requires an additional license.