

**Oracle Retail Order Broker**  
Installation Guide  
E75428-08

February 2018

Copyright © 2018, Oracle and/or its affiliates. All rights reserved.

This software and related documentation are provided under a license agreement containing restrictions on use and disclosure and are protected by intellectual property laws. Except as expressly permitted in your license agreement or allowed by law, you may not use, copy, reproduce, translate, broadcast, modify, license, transmit, distribute, exhibit, perform, publish, or display any part, in any form, or by any means. Reverse engineering, disassembly, or decompilation of this software, unless required by law for interoperability, is prohibited.

The information contained herein is subject to change without notice and is not warranted to be error-free. If you find any errors, please report them to us in writing.

If this software or related documentation is delivered to the U.S. Government or anyone licensing it on behalf of the U.S. Government, then the following notice is applicable:

U.S. GOVERNMENT END USERS: Oracle programs, including any operating system, integrated software, any programs installed on the hardware, and/or documentation, delivered to U.S. Government end users are “commercial computer software” pursuant to the applicable Federal Acquisition Regulation and agency-specific supplemental regulations. As such, use, duplication, disclosure, modification, and adaptation of the programs, including any operating system, integrated software, any programs installed on the hardware, and/or documentation, shall be subject to license terms and license restrictions applicable to the programs. No other rights are granted to the U.S. Government.

This software or hardware is developed for general use in a variety of information management applications. It is not developed or intended for use in any inherently dangerous applications, including applications that may create a risk of personal injury. If you use this software or hardware in dangerous applications, then you shall be responsible to take all appropriate fail-safe, backup, redundancy, and other measures to ensure its safe use. Oracle Corporation and its affiliates disclaim any liability for any damages caused by use of this software or hardware in dangerous applications.

Oracle and Java are registered trademarks of Oracle and/or its affiliates. Other names may be trademarks of their respective owners.

Intel and Intel Xeon are trademarks or registered trademarks of Intel Corporation. All SPARC trademarks are used under license and are trademarks or registered trademarks of SPARC International, Inc. AMD, Opteron, the AMD logo, and the AMD Opteron logo are trademarks or registered trademarks of Advanced Micro Devices. UNIX is a registered trademark of The Open Group.

This software or hardware and documentation may provide access to or information on content, products, and services from third parties. Oracle Corporation and its affiliates are not responsible for and expressly disclaim all warranties of any kind with respect to third-party content, products, and services unless otherwise set forth in an applicable agreement between you and Oracle. Oracle Corporation and its affiliates will not be responsible for any loss, costs, or damages incurred due to your access to or use of third-party content, products, or services, except as set forth in an applicable agreement between you and Oracle.

---

## Oracle Retail VAR Applications

The following restrictions and provisions only apply to the programs referred to in this section and licensed to you. You acknowledge that the programs may contain third party software (VAR applications) licensed to Oracle. Depending upon your product and its version number, the VAR applications may include:

(i) the MicroStrategy Components developed and licensed by MicroStrategy Services Corporation (MicroStrategy) of McLean, Virginia to Oracle and imbedded in the MicroStrategy for Oracle Retail Data Warehouse and MicroStrategy for Oracle Retail Planning & Optimization applications.

(ii) the Wavelink component developed and licensed by Wavelink Corporation (Wavelink) of Kirkland, Washington, to Oracle and imbedded in Oracle Retail Mobile Store Inventory Management.

(iii) the software component known as Access Via™ licensed by Access Via of Seattle, Washington, and imbedded in Oracle Retail Signs and Oracle Retail Labels and Tags.

(iv) the software component known as Adobe Flex™ licensed by Adobe Systems Incorporated of San Jose, California, and imbedded in Oracle Retail Promotion Planning & Optimization application.

You acknowledge and confirm that Oracle grants you use of only the object code of the VAR Applications. Oracle will not deliver source code to the VAR Applications to you. Notwithstanding any other term or condition of the agreement and this ordering document, you shall not cause or permit alteration of any VAR Applications. For purposes of this section, "alteration" refers to all alterations, translations, upgrades, enhancements, customizations or modifications of all or any portion of the VAR Applications including all reconfigurations, reassembly or reverse assembly, re-engineering or reverse engineering and recompilations or reverse compilations of the VAR Applications or any derivatives of the VAR Applications. You acknowledge that it shall be a breach of the agreement to utilize the relationship, and/or confidential information of the VAR Applications for purposes of competitive discovery.

The VAR Applications contain trade secrets of Oracle and Oracle's licensors and Customer shall not attempt, cause, or permit the alteration, decompilation, reverse engineering, disassembly or other reduction of the VAR Applications to a human perceivable form. Oracle reserves the right to replace, with functional equivalent software, any of the VAR Applications in future releases of the applicable program.

---

# Contents

Send Us Your Comments .....	i
Preface .....	ii
Audience .....	ii
Documentation Accessibility .....	ii
Customer Support .....	ii
Improved Process for Oracle Retail Documentation Corrections .....	iii
Oracle Retail Documentation on the Oracle Technology Network .....	iii
Conventions .....	iii

## 1 Preinstallation Tasks

Implementation Capacity Planning .....	1
Check Supported Database Server Requirements .....	1
Check Supported Application Server Requirements .....	2
Check Supported Application Server Requirements for Store Connect or Supplier Direct Fulfillment Servers .....	2
Check Client PC and Web Browser Requirements .....	3
Supported Oracle Retail Products .....	3
Linux User Account Privileges to Install the Software .....	3

## 2 Installation Steps

Before You Start .....	1
<b>Databases</b> .....	<b>3</b>
Create Database Containers and Pluggable Databases .....	3
Create Table Spaces for Each Database .....	4
Create the Users / Schemas for Each Database .....	5
<b>Order Broker Application</b> .....	<b>7</b>
Create the Order Broker Application Admin User .....	7
Install Tomee Drop-In .....	8
Install the Application .....	8
<b>Store Connect Installation</b> .....	<b>13</b>
<b>Supplier Direct Fulfillment (Vendor Portal) Installation</b> .....	<b>14</b>

---

# Send Us Your Comments

Oracle Retail Order Broker Installation Guide 15.0

Oracle welcomes customers' comments and suggestions on the quality and usefulness of this document.

Your feedback is important, and helps us to best meet your needs as a user of our products. For example:

- Are the implementation steps correct and complete?
- Did you understand the context of the procedures?
- Did you find any errors in the information?
- Does the structure of the information help you with your tasks?
- Do you need different information or graphics? If so, where, and in what format?
- Are the examples correct? Do you need more examples?

If you find any errors or have any other suggestions for improvement, then please tell us your name, the name of the company who has licensed our products, the title and part number of the documentation and the chapter, section, and page number (if available).

---

---

**Note:** Before sending us your comments, you might like to check that you have the latest version of the document and if any concerns are already addressed. To do this, access the Online Documentation available on the Oracle Technology Network Web site. It contains the most current Documentation Library plus all documents revised or released recently.

---

---

Send your comments to us using the electronic mail address: [retail-doc\\_us@oracle.com](mailto:retail-doc_us@oracle.com)

Please give your name, address, electronic mail address, and telephone number (optional).

If you need assistance with Oracle software, then please contact your support representative or Oracle Support Services.

If you require training or instruction in using Oracle software, then please contact your Oracle local office and inquire about our Oracle University offerings. A list of Oracle offices is available on our Web site at <http://www.oracle.com>.

---

# Preface

Oracle Retail Order Broker Installation Guide describes the steps required to install the application.

## Audience

This Installation Guide is for the staff responsible for installing Oracle Retail Order Broker on premise.

---

---

**Note:** These steps require working knowledge as a Linux administration and Oracle database.

---

---

## Documentation Accessibility

For information about Oracle's commitment to accessibility, visit the Oracle Accessibility Program website at <http://www.oracle.com/us/corporate/accessibility/index.html>.

### Access to Oracle Support

Customers that have purchased support have access to electronic support at My Oracle Support. For information, visit

<http://www.oracle.com/pls/topic/lookup?ctx=acc&id=info> or visit

<http://www.oracle.com/pls/topic/lookup?ctx=acc&id=trs> if you are hearing impaired.

For more information, see the following documents in the Oracle Retail Order Broker Release 15.0 documentation set:

- *Oracle Retail Order Broker Release Notes*
- *Oracle Retail Order Broker Online Help*
- *Oracle Retail Order Broker Store Connect Online Help*
- *Oracle Retail Order Broker Vendor Portal Online Help*
- *Oracle Retail Order Broker Vendor Integration Guide*
- *Oracle Retail Order Broker Administration Guide*

See the Oracle Retail Order Broker 15.0 documentation library at the following URL:

<http://www.oracle.com/technetwork/documentation/oracle-retail-100266.html>

---

---

**Note:** This documentation library includes documents that apply to both

---

---

## Customer Support

To contact Oracle Customer Support, access My Oracle Support at the following URL:

<https://support.oracle.com>

When contacting Customer Support, please provide the following:

- 
- Product version and program/module name
  - Functional and technical description of the problem (include business impact)
  - Detailed step-by-step instructions to re-create
  - Exact error message received
  - Screen shots of each step you take

## Improved Process for Oracle Retail Documentation Corrections

To more quickly address critical corrections to Oracle Retail documentation content, Oracle Retail documentation may be republished whenever a critical correction is needed. For critical corrections, the republication of an Oracle Retail document may at times not be attached to a numbered software release; instead, the Oracle Retail document will simply be replaced on the Oracle Technology Network Web site.

An updated version of the applicable Oracle Retail document is indicated by Oracle part number, as well as print date (month and year). An updated version uses the same part number, with a higher-numbered suffix. For example, part number E123456-02 is an updated version of a document with part number E123456-01.

If a more recent version of a document is available, that version supersedes all previous versions.

## Oracle Retail Documentation on the Oracle Technology Network

Oracle Retail product documentation is available on the following web site:

<http://www.oracle.com/technetwork/documentation/oracle-retail-100266.html>

## Conventions

The following text conventions are used in this document:

<b>Convention</b>	<b>Meaning</b>
<b>boldface</b>	Boldface type indicates graphical user interface elements associated with an action, emphasis, or terms defined in text or the glossary.
<i>italic</i>	Italic type indicates book titles, or placeholder variables for which you supply particular values.
monospace	Monospace type indicates commands within a paragraph, URLs, code in examples, text that appears on the screen, or text that you enter.

---

---

---

# Preinstallation Tasks

---

---

This chapter discusses the tasks to complete before installation.

---

---

**Note:** Oracle Retail assumes that the retailer has applied all required fixes for supported compatible technologies.

---

---

## Implementation Capacity Planning

There is significant complexity involved in the deployment of Oracle Retail applications, and capacity planning is site specific. Oracle Retail strongly suggests that before installation or implementation you engage your integrator (such as the Oracle Retail Consulting team) and hardware vendor to request a disk sizing and capacity planning effort.

Sizing estimates are based on a number of factors, including the following:

- Workload and peak concurrent users and batch transactions
- Hardware configuration and parameters
- Data scarcity
- Application features utilized

Additional considerations during this process include your high availability needs as well as your backup and recovery methods.

## Check Supported Database Server Requirements

General requirements for a database server running Oracle Retail Order Broker include:

Supported On	Versions Supported
Database Server OS	Oracle Linux 7 for x86-64



Supported On	Versions Supported
Database Server 12cR1	Oracle Database Enterprise Edition 12cR1 (12.1.0.2) with the following specifications:  Components: <ul style="list-style-type: none"> <li>• Oracle Partitioning</li> <li>• Examples CD</li> </ul>

## Check Supported Application Server Requirements

General requirements for running the Order Broker application include the following.

Supported On	Versions Supported
Application Server OS	Oracle Linux 7 for x86-64 (Actual hardware or Oracle virtual machine).  JAVA_HOME configured
Application Server	Tomcat 7.0.67 or higher. <b>Must be installed prior to beginning the <a href="#">Installation Steps</a>.</b>  TomEE 1.7.2 drop-in. See instructions later in document on how to install drop-in.  Java: JDK 1.7.x 64 bit.

## Check Supported Application Server Requirements for Store Connect or Supplier Direct Fulfillment Servers

Store Connect and Supplier Direct Fulfillment are optional modules. Supplier Direct Fulfillment should be installed on a separate server. General requirements for each server include the following.

Supported On	Versions Supported
Application Server OS	Oracle Linux 7 for x86-64 (Actual hardware or Oracle virtual machine).  JAVA_HOME configured
Application Server	Tomcat 7.0.67 or higher. <b>Must be installed prior to beginning the <a href="#">Installation Steps</a>.</b>  Java: JDK 1.7.x 64 bit.

**Note:** Store Connect and Supplier Direct Fulfillment do not require separate databases.

---

## Check Client PC and Web Browser Requirements

General requirements for client running Order Broker, Store Connect, or Supplier Direct Fulfillment include:

<b>Requirement</b>	<b>Versions</b>
<b>Operating system</b>	Windows 7 or 8
<b>Display Resolution</b>	1024x768 or higher
<b>Processor</b>	2.6GHz or higher
<b>Memory</b>	1 GByte or higher
<b>Networking</b>	Intranet with at least 10Mbps data rate
<b>Browser</b>	Microsoft Internet Explorer 10.0 or higher Mozilla Firefox 38.0 or higher Chrome 43.0 or higher

## Supported Oracle Retail Products

The following Oracle Retail products can be integrated with Order Broker. Each product may integrate with various pieces of Order Broker functionality and not necessarily all features available within Order Broker.

- Oracle Retail Xstore Suite 15.0 and above – Optional
- Oracle Retail Order Management System 15.0 and above – Optional
- Oracle Retail Open Commerce Platform 15.0 and above – Optional

The above products can be installed before or after Order Broker. However, it is helpful to know the connection details for the other products when configuring Order Broker.

## Linux User Account Privileges to Install the Software

A Linux user account is needed to install the software. The Linux user that is used to install the software should have write access to the Installation directories.

---

---

# Installation Steps

---

---

The following basic steps are required to install and set up Oracle Retail Order Broker for the first time.

## Before You Start

### Java JDK:

The Java 7 JDK must be installed on the application server, and JAVA\_HOME is configured.

### Tomcat 7:

Required version is Apache-Tomcat v7.0.67.

### Database Connection Information:

Prior to beginning the installation process, *you* must source the credentials for the following database connections:

- Order Broker Database
- Proximity Database
- Order Broker Admin Database

**For more information:** See the [Preinstallation Tasks](#).

---

---

**Note:** These steps require working knowledge as a Linux administration and Oracle database.

---

---

**Download the installation package:** The installation package is available on the Oracle Software Delivery Cloud (<https://edelivery.oracle.com/osdc/faces/Home.jsp>). Search for Oracle Retail Order Broker on the Linux platform to find and download the installation package.

### In this chapter:

- [Databases](#)
  - [Create Database Containers and Pluggable Databases](#)
  - [Create Table Spaces for Each Database](#)
  - [Create the Users / Schemas for Each Database](#)

- 
- Order Broker Application
    - Create the Order Broker Application Admin User
    - Install Tomee Drop-In
    - Install the Application
  - Store Connect Installation
  - Supplier Direct Fulfillment (Vendor Portal) Installation

---

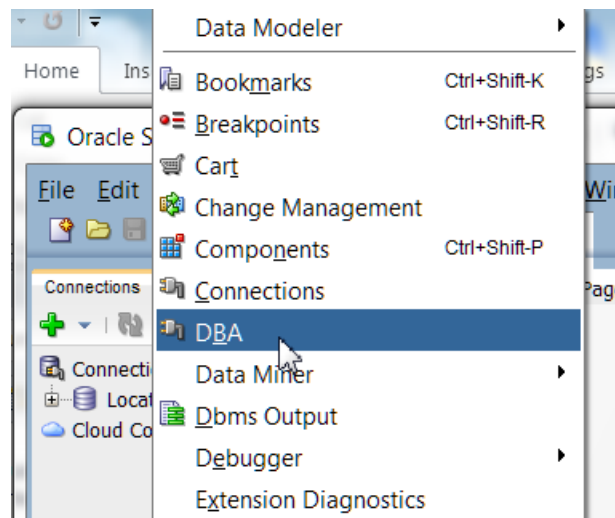
## Databases

**Before you begin:** See the [Preinstallation Tasks](#).

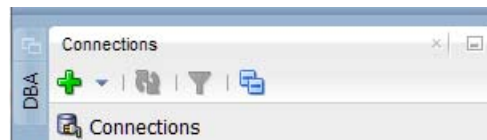
### Create Database Containers and Pluggable Databases

The Order Broker database is made up of two databases with three user / schemas. The Order Broker Install contains a Database folder with SQL scripts for creating the database objects and data. They can be used to complete the following database setup tasks.

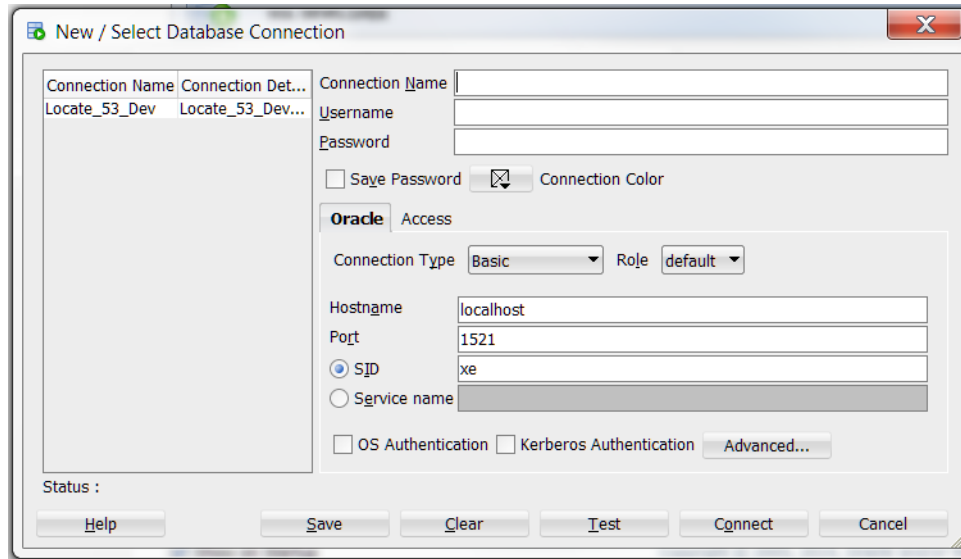
1. In Oracle, create a Container Database.
2. Next, to create pluggable databases, open Oracle SQL Developer.
3. Select **View > DBA**.



4. In the **Connections** area of the window, click the plus sign.



5. Use the **New / Select Database Connection** window to create a connection to the Container Database created in step 1.



**Important:** Before creating the pluggable databases, be sure to note the user ID and password. Also, be sure to record the *Target File Path*.

6. In Oracle, create two pluggable databases. When creating the pluggable databases, select the **File Name Conversions** dropdown and select *Custom Names*. The pluggable databases are:
  - Order\_Broker (includes the Order Broker and the Proximity schemas)
  - Order\_Broker\_Admin

**Note:** The databases need to follow this naming convention, including the underscores between words.

7. After creating the pluggable databases, select each database, select *Modify State*, and select *Open*.

## Create Table Spaces for Each Database

1. Create table spaces for the Order\_Broker database:
  - ORDER\_BROKER\_DATA
  - ORDER\_BROKER\_INDEX
  - ORDER\_BROKER\_LOBS
  - PROXIMITY\_DATA
  - PROXIMITY\_INDEX

Run `Order_Broker_tablespace.sql` logged in as **system**.

---

**Note:** The `Order_Broker_tablespace.sql` script needs to be updated with the appropriate data file paths.

2. Create the following tables spaces for the `Order_Broker_Admin` database:

- `ORDER_BROKER_ADMIN_DATA`
- `ORDER_BROKER_ADMIN_INDEX`

Run `Order_Broker_Admin_tablespace.sql` logged in as **system**.

## Create the Users / Schemas for Each Database

For the `Order_Broker` and `Order_Broker_Admin` databases:

1. In the `Order_Broker` database:

- Create an **ORDER\_BROKER** user / schema
- Create an **ORDER\_BROKER\_PROXIMITY** user / schema

Open the `Order_Broker_Users.sql` script.

In the following line, replace the **order broker** with the password generated for the `order_broker` user:

```
CREATE USER order_broker IDENTIFIED BY order broker DEFAULT  
TABLESPACE order_broker_data TEMPORARY TABLESPACE TEMP;
```

In the following line, replace the **proximity** with the password generated for the `proximity` user:

```
CREATE USER proximity IDENTIFIED BY proximity DEFAULT  
TABLESPACE proximity_data TEMPORARY TABLESPACE TEMP;
```

Run `Order_broker_users.sql` logged in as **system**.

**Important:** You need to use SQL\*Plus rather than Oracle SQL Developer to run a sql script.

Run the following command logged in as **system**:

```
grant execute on dbms_lob to order_broker;
```

2. In the `Order_Broker_Admin` database, create an **ORDER\_BROKER\_ADMIN** user / schema.

Open the `Order_Broker_Admin_Users.sql` script.

In the following line, replace the **order broker admin** with the password generated for the `order_broker_admin` user:

```
CREATE USER order_broker_admin IDENTIFIED BY  
order broker admin DEFAULT TABLESPACE order_broker_admin_data  
TEMPORARY TABLESPACE TEMP;
```

Run `Order_broker_Admin_users.sql` logged in as **system**.

3. In the `ORDER_BROKER` database, logged in as the `ORDER_BROKER` user:

- Run the `Order_Broker_schema.sql` script
- Run the `Order_Broker_seed_data.sql` script

- 
- Run the Order\_Broker\_schema\_2.sql script
4. In the **ORDER\_BROKER** database, logged in as the PROXIMITY user:
    - Run the Order\_Broker\_Proximity\_schema.sql script
    - Run the Order\_Broker\_Proximity\_seed\_data.sql script
  5. In the **ORDER\_BROKER\_ADMIN** database, logged in as the ORDER\_BROKER\_ADMIN user, run the Order\_Broker\_Admin\_schema.sql script.

**Note:** Some errors might be logged as a result of these scripts creating stored procedures. These errors do not indicate a problem with the installation process.



---

## Order Broker Application

**Before you begin:** See the [Preinstallation Tasks](#).

---

---

**Important:** File names, folder names, and commands on the Linux server are case-sensitive. While completing the following steps, confirm that the case is correct.

---

---

---

---

**Important:** You should use a text editor on a Linux machine rather than on a Windows machine to update any text files, XML files, or properties files.

---

---

---

---

**Note:** The installation package includes additional files to help with troubleshooting if issues occur during the installation process. It is not necessary to use any additional files included in the installation package besides the ones mentioned below.

---

---

### Create the Order Broker Application Admin User

1. For security reasons, the database doesn't contain any default application user IDs.
2. This step creates the **Admin** user for the application. It only needs to be executed once per client instance.
3. Copy files from the Order Broker Installation folder `Install/Order Broker/Create Admin User` to the app server.
4. Navigate to the `Create Admin User` folder.
5. Execute the following command, replacing the variables with the appropriate values:

```
"%JAVA_HOME%/bin/java" -cp ojdbc7.jar:CreateOrderBroker.jar  
com.oracle.orderbroker.CreateOrderBrokerUser  
jdbc:oracle:thin:@%HOST_NAME% %DATABASE_USER_NAME%  
%DATABASE_USER_PASSWORD% %OB_ADMIN_ID% %OB_ADMIN_PASSWORD%
```

Where:

- `%HOST_NAME%` = Oracle database host name, in form `//HOST:PORT/SERVICE`
- `%DATABASE_USER_NAME%` = database user name
- `%DATABASE_USER_PASSWORD%` = database user password
- `%OB_ADMIN_ID%` = Application Admin ID to be created
- `%OB_ADMIN_PASSWORD%` = Application password for **Admin** user

The command should return `User successfully created`. Any other message or error should be investigated.

6. Delete the folder from the application server when this step is complete.

---

## Install Tomee Drop-In

**Note:** You might need to enhance permissions on the folder where Tomcat is installed (for example, the `apache-tomcat` folder) before performing the following steps, as Write access is required.

**Important:** In the following steps, substitute `apache-tomcat` for the folder where Tomcat is installed.

1. Download the Tomee Drop-in WAR (`tomee-plus-webapp-1.7.2.war`) from `tomee.apache.org`.
2. If needed, rename the WAR file to `tomee.war`.
3. Copy the `tomee.war` file to `apache-tomcat/webapps/tomee.war`, where `apache-tomcat` is the folder where Tomcat is installed.
4. Start Tomcat:
  - Navigate to `apache-tomcat/bin`, where `apache-tomcat` is where Apache is installed
  - Enter `./startup.sh` This will explode the TomEE drop-in and change Tomcat to tomEE.
  - Confirm the server is up and running (you get the `server started` message).
  - Enter `./shutdown.sh`

These steps should shut down the server.

**For more information:** See `tomcat.apache.org` for documentation on Tomcat.

## Install the Application

1. Copy in the following folders and files from the `/Order Broker/apache-tomcat` install folders:
  - `additional-lib` folder to `apache-tomcat`
  - `apps` folder to `apache-tomcat`
  - `lib/gson-2.2.4.jar` file to `apache-tomcat/lib`
  - `conf/emailtemplates` folder in the `conf` folder to `apache-tomcat/conf`
  - `conf/packslips` folder to `apache-tomcat/conf`
  - `conf/reports` folder to `apache-tomcat/conf`
  - `conf/props` folder to `apache-tomcat/conf`
  - The following files in the `conf` folder to `apache-tomcat/conf`:
    - \* `jaas.config`

This file should be passed as `jvm param, -Djava.security.auth.login.config=/server/conf/jaas.config`.

- \* `log4j.xml`

- 
- \* tomee.xml
  - \* context.xml
  - \* server.xml

---

**Note:** This file needs to be updated with KeyStore information to enable https. This section is currently commented out. The certificate needs to be imported into cacert so that the Vendor Portal and Store Connect applications can communicate with Order Broker.

---

- conf/security folder to apache-tomcat/conf

2. Create a file named `setenv.sh` and place it in the `APACHE_TOMCAT/bin` folder.

---

**Note:** The following needs to be added to the `setenv.sh` file in the `apache-tomcat/bin` folder, for example:

```
JAVA_OPTS="$JAVA_OPTS -
Djava.security.auth.login.config=/usr/share/a
pache-tomcat/conf/jaas.config -Xms128m -
Xmx1024m -XX:PermSize=512m -
XX:MaxPermSize=512m -
XX:+CMSClassUnloadingEnabled"
```

---

3. Change the following in the `conf/tomee.xml` file:

For each database section:

- Update the `jdbcUrl`
- Update `username`
- Update `password`

**To encrypt the password:** In a Windows environment, run the password encryption program to generate the encrypted password value. The instructions and the password encryption program can be found in the `Install` folder under `Order Broker/DBConfig`.

4. Change the `sp-policy.properties` file found in `/server/conf/security`. Set the `pepper-file-path=` to the correct server path, for example:

```
pepper-file-path=apache-
tomcat/conf/security/password_pepper.properties
```

where `apache-tomcat` is the path to the server.

5. Change the `password_pepper.properties` file found in `/server/conf/security`:

Set the `PEPPER1=` and `PEPPER2=` to random string values of at least 30 characters.

**Example:**

```
PEPPER1= 4fb1272c47f2abcdefg123456789012
```

```
PEPPER2= 0fccfa6905f5xyz1234567890abcdef
```

- 
6. Change the following in the `additional-lib/ehcache.xml` file, using a text editor on the Linux machine rather than on a Windows machine:

- Based upon your configuration, you need to update the following section:

```
<cacheManagerPeerProviderFactory
class="net.sf.ehcache.distribution.
RMICacheManagerPeerProviderFactory"
properties="peerDiscovery=automatic,
multicastGroupAddress=#.#.#.#,
multicastGroupPort=15, timeToLive=#"/>
```

- Where `multicastGroupAddress= #.#.#.#` is a unique value common all servers, in the range 224.0.0.1 to 239.255.255.255, and
- Where `timeToLive=0` for a single server and 1 for a multiple server installation

7. Change the following in the `catalina.properties` file in `APACHE-TOMCAT/conf`:

- Find the `common.loader` property and change it to the one that was in the original TomEE file:

```
common.loader=${catalina.base}/lib,${catalina.base}/lib/
*.jar,${catalina.home}/lib,${catalina.home}/lib/*.jar,${
catalina.home}/additional-
lib,${catalina.home}/additional-lib/*.jar
```

- Add the following lines to the `catalina.properties` file found in the `APACHE-TOMCAT/conf` folder and change the URI value to be that of the Order Broker server:

```
# Location of Locate Server
locate.uri=https://appserver:port
```

8. Add this property to `system.properties` in `apache-tomcat/conf`:

```
com.sun.jersey.server.impl.cdi.lookupExtensionInBeanManager=true
```

9. Set up application data folders:

- Create the following folder structure:

```
/usr/share/Locate/data
```

```
ProductUploadData
ExportData
ProximityUploadData
```

- Create the `LocateUploadData` folder.

---

**Note:** The default location of the `LocateUploadData` folder is in `/usr/local/tomcat01/data`. If you would like to use a different location, you need to edit the `LOCATE_UPLOAD_FOLDER` setting in the `web.xml` file. See

---

[Supplier Direct Fulfillment \(Vendor Portal\) Installation](#) on page 14 for more information.

---

---

- Assign full rights to the application service user profile for these folders.
10. Edit the JVM arguments for the Linux service so that they include the following (with section to add highlighted):

```
--JvmOptions "-Dcatalina.home=%CATALINA_HOME%;-  
Dcatalina.base=%CATALINA_BASE%;-  
Djava.endorsed.dirs=%CATALINA_HOME%\endorsed;-  
Djava.io.tmpdir=%CATALINA_BASE%\temp;-  
Djava.util.logging.manager=org.apache.juli.ClassLoaderLogManager;-  
Djava.util.logging.config.file=%CATALINA_BASE%\conf\logging.properties;-  
Dhttps.protocols=TLSv1.1,TLSv1.2" ^
```

11. To enable uploads, provide full read/write/execute access to the `usr`, `usr/share`, and `usr/share/Locate` folders at the Others and Group levels. You can apply these rights recursively to the `usr/share/Locate` folders, but not to the other folders.

---

---

**Important:** Don't apply rights recursively to the `user` or `usr/share` folders, as this can corrupt the Linux system.

---

---

The following commands executed from the parent folder apply the required authority to the subfolders:

```
chmod 777 or 757 /usr  
chmod 777 or 757 /usr/share  
chmod 777 or 757 -R usr/share/Locate/
```

12. Give full rights to the `logs` folder for the application service profile.
13. Start Order Broker:
- Navigate to `apache-tomcat/bin`, where `apache-tomcat` is where Apache is installed
  - Enter `./startup.sh`
  - Confirm the server is up and running (you get the `server started` message).

Read/write authority to the Order Broker folders is required for this step. You can create a service to run Order Broker. See the documentation at [tomcat.apache.org](http://tomcat.apache.org) for more information on starting Tomcat and creating a service.

14. Validate the installation:
- Launch application using a URL of `http://server:port/LocateUI/LocateUI.html`, where `server:port` is the IP address and port of the Order Broker server.
  - Log in using the **Admin** user created earlier in this process (see [Create the Order Broker Application Admin User](#)).

15. Copy the `favicon.ico` file from the Supplier Direct Fulfillment (or Store Connect) folder to the `APACHE-TOMCAT/webapps/ROOT` folder.

16. Configure the installation:

- From the **Systems** menu, navigate to the **Tenant - Cloud** screen.
- Configure the settings based on your requirements. See the **Tenant - Cloud** screen in the Online Help for explanation of the individual parameters.

The screenshot shows the Oracle Order Broker Cloud Service interface. At the top, there is a navigation bar with the following menu items: Orders, Products, Locations, Reports, Systems, and Documentation. The user is logged in as 'admin (admin)'. The current page is titled 'Tenant - Cloud'.

The main content area is titled 'Settings' and contains several sections of configuration options:

- General Settings:**
  - UI Timeout: 20 (minutes)
  - Lock Out: 5 (attempts)
  - Tenant Logo: [Searchable text field]
  - Account: locate
  - Use Routing Engine:
  - Use Store Connect:
  - Use Vendor Portal:
- Email Settings:**
  - Email Template Path: /usr/share/apache-tomcat/server/conf/e
  - Email Interval: 15 (minutes)
- Retention Settings:**
  - Report Files: 30 (days)
  - Product Import Files: 30 (days)
  - Clean Up Schedule: 01:0 (hh:mm)
  - Server Logs: 14 (days)
  - Pack Slip Files: 30 (days)
- Data Folder Settings:**
  - Product Import Files: /usr/share/apache-tomcat/data/Product
  - Proximity Upload Files: /usr/share/apache-tomcat/data/Proximi
  - Export Files: /usr/share/apache-tomcat/data/ExportT
- Miscellaneous Settings:**
  - ESB WSDL Location: [Text field]
  - Geocode Address: [Text field]
- Proxy Server Settings:**
  - Proxy Address: [Text field]
  - Proxy Port: [Text field]

At the top right of the settings area, there are 'Save' and 'Cancel' buttons.

---

## Store Connect Installation

Copy the `LocateSTC.war` file from the `Store Connect` folder to the `apache-tomcat/webapps` folder, where `apache-tomcat` for the folder where Tomcat is installed.

Edit the JVM arguments for the Linux service so that they include the following (with section to add highlighted):

```
--JvmOptions "-Dcatalina.home=%CATALINA_HOME%;-  
Dcatalina.base=%CATALINA_BASE%;-  
Djava.endorsed.dirs=%CATALINA_HOME%\endorsed;-  
Djava.io.tmpdir=%CATALINA_BASE%\temp;-  
Djava.util.logging.manager=org.apache.juli.ClassLoaderLogManager;-  
Djava.util.logging.config.file=%CATALINA_BASE%\conf\logging.properties;-  
Dhttps.protocols=TLSv1.1,TLSv1.2" ^
```

**For more information:** See the [Preinstallation Tasks](#).

---

## Supplier Direct Fulfillment (Vendor Portal) Installation

**Note:** In the steps below, substitute `apache-tomcat` for the folder where Tomcat is installed.

1. Copy the `LocateVPA.war` file from the Supplier Direct Fulfillment folder to the `apache-tomcat/webapps` folder.
2. If you would like to use a different upload folder location than the default specified in the `install` folder of the `web.xml` file, update the following section:

```
<context-param>
    <param-name>LOCATE_UPLOAD_FOLDER</param-name>
    <param-value>/usr/local/tomcat01/data</param-value>
</context-param>
```

3. Edit the JVM arguments for the Linux service so that they include the following (with section to add highlighted):

```
--JvmOptions "-Dcatalina.home=%CATALINA_HOME%;-
Dcatalina.base=%CATALINA_BASE%;-
Djava.endorsed.dirs=%CATALINA_HOME%\endorsed;-
Djava.io.tmpdir=%CATALINA_BASE%\temp;-
Djava.util.logging.manager=org.apache.juli.ClassLoaderLogManager;-
Djava.util.logging.config.file=%CATALINA_BASE%\conf\logging.properties;-
Dhttps.protocols=TLSv1.1,TLSv1.2" ^
```