

O r a c l e R e t a i l O r d e r B r o k e r C l o u d S e r v i c e

Vendor Integration Guide

Release 19.12

F77155-01

April 2023

Primary Author: Elise Kaplan

This software and related documentation are provided under a license agreement containing restrictions on use and disclosure and are protected by intellectual property laws. Except as expressly permitted in your license agreement or allowed by law, you may not use, copy, reproduce, translate, broadcast, modify, license, transmit, distribute, exhibit, perform, publish, or display any part, in any form, or by any means. Reverse engineering, disassembly, or decompilation of this software, unless required by law for interoperability, is prohibited.

The information contained herein is subject to change without notice and is not warranted to be error-free. If you find any errors, please report them to us in writing.

If this is software or related documentation that is delivered to the U.S. Government or anyone licensing it on behalf of the U.S. Government, then the following notice is applicable:

U.S. GOVERNMENT END USERS: Oracle programs (including any operating system, integrated software, any programs embedded, installed or activated on delivered hardware, and modifications of such programs) and Oracle computer documentation or other Oracle data delivered to or accessed by U.S. Government end users are "commercial computer software" or "commercial computer software documentation" pursuant to the applicable Federal Acquisition Regulation and agency-specific supplemental regulations. As such, the use, reproduction, duplication, release, display, disclosure, modification, preparation of derivative works, and/or adaptation of i) Oracle programs (including any operating system, integrated software, any programs embedded, installed or activated on delivered hardware, and modifications of such programs), ii) Oracle computer documentation and/or iii) other Oracle data, is subject to the rights and limitations specified in the license contained in the applicable contract. The terms governing the U.S. Government's use of Oracle cloud services are defined by the applicable contract for such services. No other rights are granted to the U.S. Government.

This software or hardware is developed for general use in a variety of information management applications. It is not developed or intended for use in any inherently dangerous applications, including applications that may create a risk of personal injury. If you use this software or hardware in dangerous applications, then you shall be responsible to take all appropriate fail-safe, backup, redundancy, and other measures to ensure its safe use. Oracle Corporation and its affiliates disclaim any liability for any damages caused by use of this software or hardware in dangerous applications.

Oracle and Java are registered trademarks of Oracle and/or its affiliates. Other names may be trademarks of their respective owners.

Intel and Intel Inside are trademarks or registered trademarks of Intel Corporation. All SPARC trademarks are used under license and are trademarks or registered trademarks of SPARC International, Inc. AMD, Epyc, and the AMD logo are trademarks or registered trademarks of Advanced Micro Devices. UNIX is a registered trademark of The Open Group.

This software or hardware and documentation may provide access to or information about content, products, and services from third parties. Oracle Corporation and its affiliates are not responsible for and expressly disclaim all warranties of any kind with respect to third-party content, products, and services unless otherwise set forth in an applicable agreement between you and Oracle. Oracle Corporation and its affiliates will not be responsible for any loss, costs, or damages incurred due to your access to or use of third-party content, products, or services, except as set forth in an applicable agreement between you and Oracle.

Oracle Retail VAR Applications

The following restrictions and provisions only apply to the programs referred to in this section and licensed to you. You acknowledge that the programs may contain third party software (VAR applications) licensed to Oracle. Depending upon your product and its version number, the VAR applications may include:

(i) the MicroStrategy Components developed and licensed by MicroStrategy Services Corporation (MicroStrategy) of McLean, Virginia to Oracle and imbedded in the MicroStrategy for Oracle Retail Data Warehouse and MicroStrategy for Oracle Retail Planning & Optimization applications.

(ii) the Wavelink component developed and licensed by Wavelink Corporation (Wavelink) of Kirkland, Washington, to Oracle and imbedded in Oracle Retail Mobile Store Inventory Management.

(iii) the software component known as Access Via™ licensed by Access Via of Seattle, Washington, and imbedded in Oracle Retail Signs and Oracle Retail Labels and Tags.

(iv) the software component known as Adobe Flex™ licensed by Adobe Systems Incorporated of San Jose, California, and imbedded in Oracle Retail Promotion Planning & Optimization application.

You acknowledge and confirm that Oracle grants you use of only the object code of the VAR Applications. Oracle will not deliver source code to the VAR Applications to you. Notwithstanding any other term or condition of the agreement and this ordering document, you shall not cause or permit alteration of any VAR Applications. For purposes of this section, "alteration" refers to all alterations, translations, upgrades, enhancements, customizations or modifications of all or any portion of the VAR Applications including all reconfigurations, reassembly or reverse assembly, re-engineering or reverse engineering and recompilations or reverse compilations of the VAR Applications or any derivatives of the VAR Applications. You acknowledge that it shall be a breach of the agreement to utilize the relationship, and/or confidential information of the VAR Applications for purposes of competitive discovery.

The VAR Applications contain trade secrets of Oracle and Oracle's licensors and Customer shall not attempt, cause, or permit the alteration, decompilation, reverse engineering, disassembly or other reduction of the VAR Applications to a human perceivable form. Oracle reserves the right to replace, with functional equivalent software, any of the VAR Applications in future releases of the applicable program.

Contents

Send Us Your Comments	1
Preface.....	1
Audience	1
Documentation Accessibility	1
Related Documents	1
Customer Support	2
Improved Process for Oracle Retail Documentation Corrections	2
Oracle Retail Documentation on the Oracle Help Center	2
Conventions	2
1 Vendor Integration Overview	
Process Overview	1-1
Required Information and Setup	1-3
Required Information	1-3
Integrated vendor configuration	1-4
Logging	1-5
2 getDSOrders Request Message	
Sample getDSOrder Request Message	2-1
getDSOrders Request Message Contents	2-2
3 getDSOrders Response Message	
Sample getDSOrders Response Message	3-1
Troubleshooting the getDSOrders response	3-4
Sample Unsuccessful Response	3-4
Response Codes and Descriptions	3-5
getDSOrders Response Message Contents	3-6
4 setDSAcknowledge Request Message	
Sample setDSAcknowledge Request Message	4-1
setDSAcknowledge Request Message Contents	4-2
5 setDSAcknowledge Response Message	
Sample setDSAcknowledge Response Message	5-1
Troubleshooting the setDSAcknowledge response	5-2
Sample Unsuccessful Response	5-2
Response Codes and Descriptions	5-2
getDSAcknowledge Response Message Contents	5-3

6	setDSShipConfirm Request Message	
	Sample setDSShipConfirm Request Message	6-1
	setDSShipConfirm Request Message Contents	6-2
7	setDSShipConfirm Response Message	
	Sample setDSShipConfirm Response Message	7-1
	Troubleshooting the setDSShipConfirm response	7-2
	Sample Unsuccessful Response	7-2
	Response Codes and Descriptions	7-2
	setDSShipConfirm Response Message Contents	7-4

Send Us Your Comments

Oracle Retail Order Broker Cloud Service Vendor Integration Guide, Release 19.12

Oracle welcomes customers' comments and suggestions on the quality and usefulness of this document.

Your feedback is important, and helps us to best meet your needs as a user of our products. For example:

- Are the implementation steps correct and complete?
- Did you understand the context of the procedures?
- Did you find any errors in the information?
- Does the structure of the information help you with your tasks?
- Do you need different information or graphics? If so, where, and in what format?
- Are the examples correct? Do you need more examples?

If you find any errors or have any other suggestions for improvement, then please tell us your name, the name of the company who has licensed our products, the title and part number of the documentation and the chapter, section, and page number (if available).

Note: Before sending us your comments, you might like to check that you have the latest version of the document and if any concerns are already addressed. To do this, access the Online Documentation available on the Oracle Technology Network Web site. It contains the most current Documentation Library plus all documents revised or released recently.

Send your comments to us using the electronic mail address: retail-doc_us@oracle.com

Please give your name, address, electronic mail address, and telephone number (optional).

If you need assistance with Oracle software, then please contact your support representative or Oracle Support Services.

If you require training or instruction in using Oracle software, then please contact your Oracle local office and inquire about our Oracle University offerings. A list of Oracle offices is available on our Web site at <http://www.oracle.com>.

Preface

The Oracle Retail Order Broker Cloud Service Vendor Integration Guide describes the process an integrated vendor can use to receive purchase orders from the Supplier Direct Fulfillment module, and confirm shipment of the purchase orders, using web service messages rather than the Vendor Portal screens. This guide includes details on message contents and provides configuration instructions.

Audience

This Integration Guide is for the following audiences:

- Implementation staff for the retailer
- Integrators and implementation staff for the vendor
- Business analysts who need information about product processes and interfaces

Documentation Accessibility

For information about Oracle's commitment to accessibility, visit the Oracle Accessibility Program website at

<http://www.oracle.com/us/corporate/accessibility/index.html>.

Access to Oracle Support

Customers that have purchased support have access to electronic support at My Oracle Support. For information, visit

<http://www.oracle.com/pls/topic/lookup?ctx=acc&id=info> or visit

<http://www.oracle.com/pls/topic/lookup?ctx=acc&id=trs> if you are hearing impaired.

Related Documents

For more information, see the following documents in the Oracle Retail Order Broker Cloud Service Release 19.12 documentation set:

- *Oracle Retail Order Broker Cloud Service Release Notes*
- *Oracle Retail Order Broker Cloud Service Operations Guide*
- *Oracle Retail Order Broker Cloud Service online help*
- *Oracle Retail Order Broker Cloud Service Vendor Portal online help*

See the Oracle Retail Order Broker Cloud Service 19.12 documentation library at the following URL:

<https://docs.oracle.com/en/industries/retail/index.html>

Customer Support

To contact Oracle Customer Support, access My Oracle Support at the following URL:

<https://support.oracle.com>

When contacting Customer Support, please provide the following:

- Product version and program/module name
- Functional and technical description of the problem (include business impact)
- Detailed step-by-step instructions to re-create
- Exact error message received
- Screen shots of each step you take

Improved Process for Oracle Retail Documentation Corrections

To more quickly address critical corrections to Oracle Retail documentation content, Oracle Retail documentation may be republished whenever a critical correction is needed. For critical corrections, the republication of an Oracle Retail document may at times not be attached to a numbered software release; instead, the Oracle Retail document will simply be replaced on the Oracle Help Center Web site.

This process will prevent delays in making critical corrections available to customers. For the customer, it means that you must verify that you have the most recent version of the Oracle Retail documentation set. Oracle Retail documentation is available on the Oracle Help Center at the following URL:

<https://docs.oracle.com/en/industries/retail/index.html>

An updated version of the applicable Oracle Retail document is indicated by Oracle part number, as well as print date (month and year). An updated version uses the same part number, with a higher-numbered suffix. For example, part number E123456-02 is an updated version of a document with part number E123456-01.

If a more recent version of a document is available, that version supersedes all previous versions.

Oracle Retail Documentation on the Oracle Help Center

Oracle Retail product documentation is also available on the following web site:

<https://docs.oracle.com/en/industries/retail/index.html>

Conventions

The following text conventions are used in this document:

Convention	Meaning
boldface	Boldface type indicates graphical user interface elements associated with an action, emphasis, or terms defined in text or the glossary.
<i>italic</i>	Italic type indicates book titles, or placeholder variables for which you supply particular values.

Convention	Meaning
monospace	Monospace type indicates commands within a paragraph, URLs, code in examples, text that appears on the screen, or text that you enter.

Vendor Integration Overview

Overview: A vendor can receive and confirm shipment of drop ship purchase orders by:

- using the screens in the Vendor Portal for all activities, or
- using the vendor integration between Oracle Retail Order Broker and the vendor's system.

A vendor can also use a combination of these options; for example, the vendor can receive purchase orders through the vendor integration, and also use the Vendor Portal screens to confirm shipments and update purchase orders.

Included in the vendor integration: The vendor integration includes:

- sending batches of new purchase orders to the vendor's system when the vendor's system requests them
- enabling the vendor's system to acknowledge receipt of a batch of purchase orders
- confirming shipments of purchase orders, including the carrier (ship via) used, tracking number, weight, shipment date, and freight charges

Not included in the vendor integration: The vendor integration does not include:

- modifying purchase orders, such as changing expected ship dates or putting a line on hold
- accepting or rejecting address changes or cancellation requests from the retailer
- receiving cost changes from the retailer
- generating invoices and submitting them to the retailer

Each of these options is available in the Vendor Portal if the vendor user has authority.

Mapping to the vendor's system: The vendor can use the messages described in this guide to map to the vendor's system, or contact an Oracle representative for information on creating unique maps.

JSON messages: The vendor integration uses the JSON (JavaScript Object Notation) format for its messages. See the messages in this guide for examples.

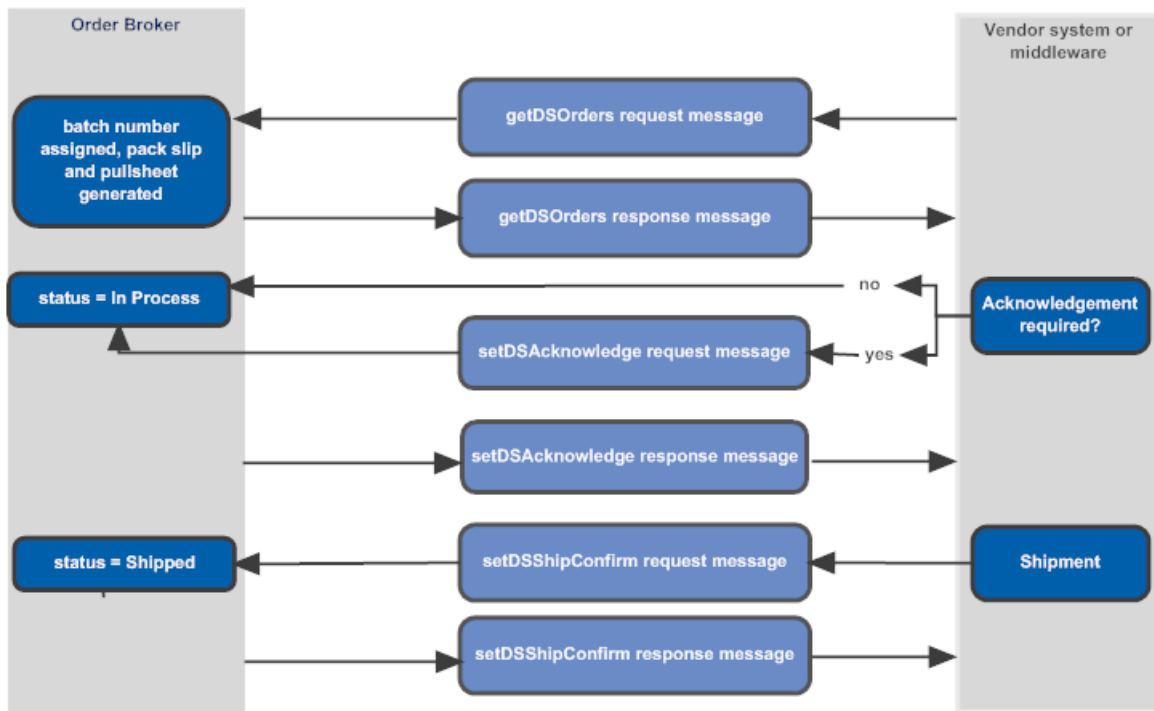
Process Overview

The typical vendor integration process:

- **Creation:** Purchase orders are created in Oracle Retail Order Broker (the status is **New Order** and no batch numbers are assigned yet).

- **Get purchase orders:**
 - The vendor system requests new orders with the [getDSOrders Request Message](#) to Oracle Retail Order Broker.
 - The [getDSOrders Response Message](#) from Oracle Retail Order Broker includes the new purchase orders. At this time:
 - * a batch number is assigned to the purchase orders included in the response message.
 - * the pack slip PDF, pack slip CSV, and pullsheet are generated, if specified for the vendor.
- **Acknowledgement required?**
 - **Not required:** If the vendor is not configured to require an acknowledgement, the status of the purchase orders in the response message changes automatically to **In Process**.
 - **Required:** Otherwise, if the vendor is configured to require acknowledgement, the status of the purchase orders remains **New Order** until the vendor system acknowledges receipt of the batch:
 - * The vendor's system sends the [setDSAcknowledge Request Message](#) to Oracle Retail Order Broker, specifying the batch received.
 - * Oracle Retail Order Broker sends the [setDSAcknowledge Response Message](#). At this time, the status of the purchase orders changes to **In Process**.

Note: If acknowledgment is required and has not yet been received, the purchase orders are not included in the summary table at the **Get Purchase Orders** screen. Also, if an address change or cancellation request arrives during this interval, the change or cancellation applies automatically.
- **Confirm shipment:** Optionally, as an alternative to using the shipment screens available in the Vendor Portal:
 - Use the [setDSShipConfirm Request Message](#) to Oracle Retail Order Broker to specify the purchase order, line number(s), and quantity shipped for each line, including the carrier used, tracking number, shipment date, weight, and meter charges.
 - Oracle Retail Order Broker sends the [setDSShipConfirm Response Message](#).



Required Information and Setup

- [Required Information](#)
- [Integrated vendor configuration](#)
- [Logging](#)

Required Information

Information required for the integration and used in the messages includes:

- **vendor code** (*vendorCd*): The code, rather than the name, of the integrated vendor. Included in all requests to Oracle Retail Order Broker. Displayed at the **Vendors** screen in Oracle Retail Order Broker and at the **Vendor Configuration** screen in the Vendor Portal.
- **carrier code** (*carrierCd*): The code, rather than the name, of the carrier shipping a purchase order. Displayed at the **Carriers** screen in Oracle Retail Order Broker and at the **Carriers** tab of the **Vendor Configuration** screen in the Vendor Portal.
- **destination**: The name of the Oracle Retail Order Broker database. Must match the *Account* value specified at the **Tenant - Admin** screen; however, not case-sensitive. Normally set to *locate*.
- **version**: Must be 4.5 or higher.
- **default vendor system** (*vendorSystemCd*): the code identifying the default vendor system for the organization (the *Vendor Default* flag is selected at the **System** screen in Oracle Retail Order Broker). **Note**: Not the code identifying the system that originates the drop ship orders.

For more information: See:

- **Setting Up Data for the Supplier Direct Fulfillment Module** in the Oracle Retail Order Broker online help
- **Additional Configuration Options** in the **Oracle Retail Order Broker Operations Guide**

Integrated vendor configuration

In addition to the steps described under **Setting Up Data for the Supplier Direct Fulfillment Module** in the Oracle Retail Order Broker online help:

- **Oracle Retail Order Broker:** When logged into Oracle Retail Order Broker as a retailer user, use the **Create Vendor** or **Edit Vendor** screen, **Preferences** tab:
 - **Integration and PO Schedule** folder:
 - * Select *Enable Integration* to display the **Get Purchase Orders** screen rather than the **Select Purchase Orders** screen in the Vendor Portal
 - * Select *Require Acknowledgement* if the vendor needs to send the setDSAcknowledge request message for each batch of purchase orders
 - **Pack Slip** folder:
 - * Use the *Generate Format* setting to specify whether to generate PDF pack slip, pack slip CSV, or both (**Note:** This setting is used only if the *PDF Form Type* setting is not set to **None**).
 - * Use the *PDF Form Type* setting to specify whether to generate the pack slip PDF in graphical format, non-graphical format, or not to generate the PDF pack slip.
 - * Use the *Print Batch Pullsheet* setting to specify whether to generate a PDF batch pullsheet along with the pack slip or pack slip CSV.
 - **Invoices folder:** Use these settings to control access to invoice generation options through the Vendor Portal screens. See the Oracle Retail Order Broker online help for more information.
 - **Emails** folder: Use these settings to control when to generate email notifications to the vendor and the email address(es) to use. See the Oracle Retail Order Broker online help for more information.
- **Vendor Portal:** When logged into the Vendor Portal as a vendor user, use the **Vendor Configuration** screen, **Preferences** tab:
 - **Pack Slip** folder:
 - * Use the *Generate Format* setting to specify whether to generate PDF pack slip, pack slip CSV, or both (**Note:** This setting is used only if the *PDF Form Type* setting is not set to **None**).
 - * Use the *PDF Form Type* setting to specify whether to generate the pack slip PDF in graphical format, non-graphical format, or not to generate the PDF pack slip.
 - * Use the *Print Batch Pullsheet* setting to specify whether to generate a PDF batch pullsheet along with the pack slip or pack slip CSV.
 - **Emails** folder: Use these settings to control when to generate email notifications to the vendor and the email address(es) to use.

For more information: See the Oracle Retail Order Broker online help (**New Vendor** or **Edit Vendor** screens) or the Vendor Portal online help (**Vendor Configuration** screen).

Authentication: Web service authentication is required for each inbound message.

- **Basic authentication:** Oracle Retail Order Broker returns the Inbound message failed validation error to a web service message if the request message was not sent with a valid user name and password. See the **Web Service Authorization** screen in the Oracle Retail Order Broker Online Help for background.
- **OAuth:** Oracle Retail Order Broker returns the Inbound message failed validation error to a web service message if the request message was not sent with a valid token.

For more information: Contact the retailer for more information about acquiring the token that you need to pass in the authentication header if you use OAuth.

Logging

If the *Vendor Portal Request/Response* field at the **Event Logging** screen is set to Everything or Errors, Oracle Retail Order Broker logs the JSON messages in the `json_ds.log` file in the `log` folder on the Oracle Retail Order Broker server.

All personally identifiable information for customers, vendors, or locations is removed in log files. Personally identifiable information includes names, address, email addresses, phone numbers, customer numbers, and tender accounts.

The personally identifiable information is replaced in the log with the text `*** Removed by Logger ***`. For example, the email address might appear in the log file as `<email>*** Removed by Logger ***</email>`.

getDSOrders Request Message

Overview: Use the getDSOrders request message to request new purchase orders for fulfillment.

Limit batch size? The getDSOrders request message can use the `batchSize` value to specify a maximum number of purchase orders to include in the response message if the `criteriaType` is "item" or "all PO". If the `criteriaType` is "PO", then the response includes only the specific purchase order.

In this chapter:

- [Sample getDSOrder Request Message](#) on page 2-1
- [getDSOrders Request Message Contents](#) on page 2-2

For more information: See:

- [Vendor Integration Overview](#) on page 1-1 for background
- [getDSOrders Response Message](#) on page 3-1 for information on the response message generated to the getDSOrder request message and the causes of possible errors

Sample getDSOrder Request Message

All purchase orders: The following sample requests all new purchase orders assigned for fulfillment.

```
{
  "messageHeader": {
    "datetime": "2013-09-25T13:42:12",
    "version": "4.5",
    "source": "ABCDE",
    "destination": "locate"
  },
  "vendorCd": "10",
  "vendorSystemCd": "vendor",
  "batchSize": 10,
  "messageCriteria": [
    {
      "criteriaType": "item",
      "criteriaValue": "ABC1234"
    }
  ]
}
```

getDSOrders Request Message Contents

Message Element or Attribute	Alpha/numeric	Description
messageHeader Example: <pre>"messageHeader": { "datetime": "2013-09-25T13:42:12", "version": "4.5", "source": "ABCDE", "destination": "locate" }</pre>		
datetime	datetime	Standard datetime format (YYYY-MM-DDTHH:MM:SS, or 2013-09-25T07:32:01). Required, and must be formatted correctly; should not include the offset from Greenwich Mean Time (for example, pass 2013-09-25T03:02:47.118 rather than 2013-09-25T03:02:47.118-05:00).
version	alphanumeric	Indicates the current version of Oracle Retail Order Broker. Must be set to 4.5 or higher. Required.
source	alphanumeric	The external system originating the request. Required.
destination	alphanumeric	The name of the Oracle Retail Order Broker database. Must match the <i>Account</i> value specified at the Tenant - Admin screen; however, not case-sensitive. Normally set to <i>locate</i> .
Identifying information Example: <pre>"vendorCd": "10", "vendorSystemCd": "vendor", "batchSize": 10, "messageCriteria": [</pre>		
vendorCd	alphanumeric	A code identifying the vendor to fulfill the purchase order. Required.
vendorSystemCd	alphanumeric	A code identifying the default vendor system for the organization (not the system originating the purchase orders). Required.

Message Element or Attribute	Alpha/numeric	Description
batchSize	numeric	The maximum number of purchase orders to include in the response. The batchSize is used only when the criteriaType is All PO or item .
<p>Criteria</p> <p>Example:</p> <pre> "messageCriteria": [{ "criteriaType": "item", "criteriaValue": "ABC1234" }] </pre>		
criteriaType	alphanumeric	<p>Controls how to select the purchase orders to include in the response.</p> <p>Possible types:</p> <ul style="list-style-type: none"> • All PO: include all eligible purchase orders. Only new purchase orders that have not yet been assigned a batch number are eligible. • item: include purchase orders that include the specified item on a purchase order line. Only new purchase orders that have not yet been assigned a batch number are eligible. • PO: include the specified purchase order. Only the specified purchase order is eligible, and only if it has not yet been assigned a batch number. • batch: Include all purchase orders assigned to the specified batch. You can request the same batch multiple times, and the purchase orders in the batch are returned in the response regardless of their current status.

Message Element or Attribute	Alpha/ numeric	Description
criteriaValue	alphanumeric	<p>The value that the purchase orders returned in the response need to match. If the criteriaType is:</p> <ul style="list-style-type: none">• All PO: The criteriaValue is not used.• item: The criteriaValue needs to specify a vendor item code for the vendor to have the response include eligible purchase orders (new order status, no batch number assigned) that include that item. Not case-sensitive.• PO: The criteriaValue needs to specify a single eligible purchase order (new order status, no batch number assigned) for the vendor.• batch: The criteriaValue needs to specify a batch for the vendor. The batch does not need to be in new order status.

getDSOrders Response Message

Overview: Use the getDSOrders response message to receive one or more new drop ship purchase orders based on the criteria specified in the getDSOrders request message.

In this chapter:

- [Sample getDSOrders Response Message](#) on page 3-1
- [Troubleshooting the getDSOrders response](#) on page 3-4
- [getDSOrders Response Message Contents](#) on page 3-6

For more information: See:

- [Vendor Integration Overview](#) on page 1-1 for background
- [getDSOrders Request Message](#) on page 2-1 for information on the request message that generates the getDSOrders response

Sample getDSOrders Response Message

The following sample includes information on a drop ship purchase order for fulfillment.

```
{
  "poHeader": [ {
    "requestID": 66665,
    "type": "DROPSHIP",
    "poNo": "662",
    "buyerCd": "HEB",
    "poEnteredDate": "2013-09-27T00:00:00.000",
    "discountPercentage": 0,
    "discountAmount": 0,
    "shippingInstructions": "DRP SHP ORD#000SAMPLE",
    "retailerCurrencyCd": "USA",
    "vendorCurrencyCd": "USA",
    "currencyConversionRate": 1,
    "brandName": "Blue Fish",
    "brandCd": "456",
    "createdDate": "Sep 27, 2013 9:21:26 AM",
    "salesOrder": {
      "orderID": "12433-001",
      "freightAmount": 2.2,
      "orderAdditionalFreightCharges": 0,
      "orderAdditionalCharges": 0,
      "gift": "N",
      "shipComplete": "N",
      "balanceDue": 0,
      "soldTo": {
```

```
"customerNo": "144",
"companyName": "SAMPLE COMPANY",
"prefix": "MR.",
"first": "FIRST",
"middle": "Q",
"last": "LAST",
"suffix": "ESQ",
"apt": "ABC123",
"address1": "257 EXAMPLE STREET",
"address2": "SECOND ADDRESS LINE",
"address3": "THIRD ADDRESS LINE",
"address4": "FOURTH ADDRESS LINE",
"city": "WORCESTER",
"province": "MA",
"postal": "01602",
"country": "USA",
"email": "jasample@example.com",
"dayPhone": "(508) 555-0100",
"eveningPhone": "(508) 555-0101"
},
"shipTo": {
"attention": "",
"companyName": "EXAMPLE INDUSTRIES",
"prefix": "MR.",
"first": "FIRST",
"middle": "Q",
"last": "LAST",
"suffix": "ESQ",
"apt": "ABC123",
"address1": "257 SAMPLE STREET",
"address2": "SECOND ADDRESS LINE",
"address3": "THIRD ADDRESS LINE",
"address4": "FOURTH ADDRESS LINE",
"city": "WORCESTER",
"province": "MA",
"postal": "01602",
"country": "USA",
"email": "jasample@example.com",
"dayPhone": "(508) 555-0100",
"eveningPhone": "(508) 555-0101"
},
"orderMessages": {},
"giftMessages": {},
"payments": [
{
"tenderDescription": "MASTERCARD",
"tenderAmount": 0,
"tenderAccount": ""
}
],
"poDetail": [
{
"poId": 0,
"poLineNo": 1,
"vendorItemID": "V10DUCK",
"vendorItemDescription": "VENDOR 10 RUBBER DUCK",
"itemUPCCd": "",
"itemEANCd": "",
"poUnitPrice": 0.25,
"poUOMCd": "EA",
"vendorUOMCd": "EA",
"poQtyOrdered": 2,
"vendorOrderedQty": 2,
"vendorUnitPrice": 0.25,
"carrierCd": "4",
"carrierName": "Auto Created 4",
"poLineDueDate": "2013-10-01T00:00:00.000",
```

Sample getDSOrders Response Message

```

"poLineCancelAfterDate": "",
"orderDetail": {
  "salesOrderItemID": "DUCK",
  "salesOrderItemDescription": "SQUEAKY RUBBER DUCK",
  "salesOrderQtyOrdered": 2,
  "salesOrderUnitPrice": 1,
  "orderExtendedFreight": 0,
  "orderLineCustomizationCharge": 0,
  "orderLineEntryDate": "2013-09-27T09:21:26.470",
  "orderLineGiftWrap": "N",
  "orderLineShipAlone": " ",
  "orderLineTax": [
    {
      "taxDescription": "GST",
      "taxAmount": 0
    },
    {
      "taxDescription": "PST",
      "taxAmount": 0
    },
    {
      "taxDescription": "Tax",
      "taxAmount": 0.13
    }
  ],
  "customizationMessage": []
}
},
{
  "poId": 0,
  "poLineNo": 2,
  "vendorItemID": "V10TEETH",
  "vendorItemDescription": "VENDOR 10 CHATTERING TEETH",
  "itemUPCCd": "",
  "itemEANCd": "",
  "poUnitPrice": 1,
  "poUOMCd": "EA",
  "vendorUOMCd": "EA",
  "poQtyOrdered": 2,
  "vendorOrderedQty": 2,
  "vendorUnitPrice": 1,
  "carrierCd": "4",
  "carrierName": "Auto Created 4",
  "poLineDueDate": "2013-10-01T00:00:00.000",
  "poLineCancelAfterDate": "",
  "orderDetail": {
    "salesOrderItemID": "TEETH",
    "salesOrderItemDescription": "CHATTERING TEETH",
    "salesOrderQtyOrdered": 2,
    "salesOrderUnitPrice": 10,
    "orderExtendedFreight": 0,
    "orderLineCustomizationCharge": 0,
    "orderLineEntryDate": "2013-09-27T09:21:26.500",
    "orderLineGiftWrap": "N",
    "orderLineShipAlone": " ",
    "orderLineTax": [
      {
        "taxDescription": "GST",
        "taxAmount": 0
      },
      {
        "taxDescription": "PST",
        "taxAmount": 0
      },
      {
        "taxDescription": "Tax",

```

```

        "taxAmount": 1.25
      }
    ],
    "customizationMessage": []
  }
}
]
}],
"messageHeader": {
  "datetime": "2013-09-27T09:24:42.019",
  "version": "4.5",
  "source": "locate",
  "destination": "sample"
},
"messageBody": {
  "vendorCd": "10",
  "vendorSystemCd": "vendor",
  "batchSize": 1,
  "remaining": 0,
  "batchID": 1226,
  "responseCd": "0",
  "responseDescription": ""
}
}
}

```

Troubleshooting the getDSOrders response

If the response does not include at least one purchase order, the `responseCd` and `responseDescription` indicate why no purchase orders are included.

Sample Unsuccessful Response

The following sample indicates that there are no new orders matching the criteria specified in the request message.

Request by PO, item, or all purchase orders: A response such as the following might be returned if the request specifies a `criteriaType` of **All PO, Item, or PO**, and no new purchase orders match the `criteriaType` and `criteriaValue`.

Request by batch: If the `criteriaType` is **Batch** and the `criteriaValue` specifies a valid batch for the vendor, the response includes all purchase orders in the matching batch, even if the batch has already been sent and even if the number of purchase orders in the batch exceeds the `batchSize` specified in the request.

```

{
  "poHeader": [],
  "messageHeader": {
    "datetime": "2013-10-02T10:35:08.580",
    "version": "4.5",
    "source": "locate",
    "destination": "test"
  },
  "messageBody": {
    "vendorCd": "11",
    "vendorSystemCd": "vendor",
    "batchSize": 2,
    "batchID": 0,
    "responseCd": "3009",
    "responseDescription": "No orders since (2013-10-02T10:08:51.560)"
  }
}

```

Response Codes and Descriptions

The following table lists possible response codes and descriptions returned if there are no new purchase orders matching the criteria passed in the request message.

responseCd	responseDescription	Explanation
3000	FAILED - Invalid or Missing Destination (locateq)	The destination specified in the request did not match the <i>Account</i> specified at the Tenant - Admin screen.
3001	FAILED - Message version 4.5 or higher required.	The version specified in the request was lower than 4.5.
3002	Invalid or missing vendor code, (vendorCd) is required.	No vendorCd was specified in the request.
3003	Invalid or missing vendor system code, (vendorSystemCd) is required.	No vendorSystemCd was specified in the request.
3004	Invalid vendor system code, system (vendorq) does not exist.	The vendorSystemCd is not a valid system.
3005	Invalid vendor code, vendor (12345) does not exist in system (vendor).	The vendorCd is not valid for the vendorSystemCd. The vendorSystemCd needs to specify the vendor system, not the system where the purchase order originates.
3007	Invalid or missing criteria type, (criteriaType) is required.	The criteriaType is blank.
3008	Invalid criteria type, criteria type (Batchq) is not supported.	The criteriaType was not All PO, batch, item, or PO .
3009	No orders since (2013-10-02T09:51:56.327)	No new, unsent orders match the criteria specified. Returned only when the criteriaType was All PO, item, or PO .
	Invalid criteria value, PO (689) does not exist.	The criteriaType was PO , and there is no purchase order matching the criteriaValue specified.
310	Invalid criteria value, Item (qv11pimabluelarge) does not exist.	The criteriaType was item , and the criteriaValue specified was not a valid vendor item for the vendorCd.

responseCd	responseDescription	Explanation
312	Invalid criteria value, Batch (9) is not associated to vendor (10).	The criteriaType was batch , and the criteriaValue specified was not a valid batch number for the vendorCd.

getDSOrders Response Message Contents

Note: Then following descriptions indicate the attributes of data passed from Oracle Retail Order Management System Cloud Service rather than the limitations of the Oracle Retail Order Broker database. Drop ship purchase orders from other systems may include different data. For example, Oracle Retail Order Management System Cloud Service assigns a numeric purchase order of up to 7 positions, while the Oracle Retail Order Broker database can accommodate an alphanumeric code of up to 50 positions.

Message Element or Attribute	Alpha/numeric	Description
poHeader Example: <pre>{ "poHeader": [{ "requestID": 66665, "type": "DROPSHIP", "poNo": "662", "buyerCd": "BUY", "poEnteredDate": "2013-09-27T00:00:00.000", "discountPercentage": 0, "discountAmount": 0, "shippingInstructions": "DRP SHP ORD#00012433", "retailerCurrencyCd": "USA", "vendorCurrencyCd": "USA", "currencyConversionRate": 1, "brandName": "Blue Fish", "brandCd": "456", "createdDate": "Sep 27, 2013 9:21:26 AM",</pre>		Purchase order header information.
requestID	numeric	The code assigned by Oracle Retail Order Broker to uniquely identify the purchase order.
type	alphanumeric	Set to DROPSHIP.
poNo	alphanumeric	The number assigned by the originating system to identify the purchase order number. Numeric; up to 7 positions.

Message Element or Attribute	Alpha/numeric	Description
buyerCd	alphanumeric	The code identifying the buyer for the first item on the purchase order. Blank if no buyer is specified for the first item. Up to 3 positions.
poEnteredDate	datetime	The PO created (entered) date. Datetime format. Might not be the same as the date when the purchase order was generated.
discountPercentage	numeric	The discount percentage, if any, specified for the vendor. Includes a 2-position decimal.
discountAmount	numeric	The discount amount, if any, specified for the vendor. Includes a 2-position decimal. Not currently implemented from Oracle Retail Order Management System Cloud Service.
shippingInstructions	alphanumeric	Oracle Retail Order Management System Cloud Service sets this value to DRP SHP ORD#12345678, where 12345678 is the originating order number.
retailerCurrencyCd	alphanumeric	The currency code associated with the order. Up to 3 positions. Should be the same as the <code>vendorCurrencyCd</code> , and the <code>currencyConversionRate</code> should be 1 . Currency conversion is not currently supported.
vendorCurrencyCd	alphanumeric	The vendor currency code. Up to 3 positions. Should be the same as the <code>retailerCurrencyCd</code> , and the <code>currencyConversionRate</code> should be 1 . The Supplier Direct Fulfillment module does not support currency conversion.
currencyConversion Rate	numeric	Typically set to 1 . Can include a 3-position decimal. Currency conversion is not currently supported.
brandName	alphanumeric	The description of the brand associated with the purchase order. From the <i>Brand Name</i> . Up to 40 positions. Available in: Version 5.0; not returned if the version specified in the request message is lower than 5.0.

Message Element or Attribute	Alpha/numeric	Description
brandCd	alphanumeric	The code identifying the brand associated with the purchase order. From the <i>Brand Code</i> . Purchase orders that originate in Oracle Retail Order Management System Cloud Service have numeric brand codes of up to 3 positions. Available in: Version 5.0; not returned if the version specified in the request message is lower than 5.0.
createdDate	alphanumeric	The date and time when the purchase order was created. Mmm DD, YYYY HH:MM:SS AM format (for example, Sep 30, 2013 12:51:48 PM). Based on the retailer's system's time zone.
salesOrder Example: <pre>"salesOrder": { "orderID": "12433-001", "freightAmount": 2.2, "orderAdditionalFreightCharges": 0, "orderAdditionalCharges": 0, "gift": "N", "shipComplete": "N", "balanceDue": 0, "orderMessages": {}, "giftMessages": {}</pre>		Sales order header information. The orderMessages and giftMessages name/value pairs are after the soldTo and shipTo name/value pairs.
orderID	alphanumeric	The order number (up to 8 positions, not zero-filled) and ship-to number (3 positions, zero-filled), separated by a hyphen (for example, 12345-001).
freightAmount	numeric	The total order-level freight charges for the drop ship items included on the purchase order. Can include a 2-position decimal.
orderAdditional FreightCharges	numeric	The total order-level additional freight charges. Can include a 2-position decimal.
orderAdditional Charges	alphanumeric	The total order-level additional charges. Can include a 2-position decimal.
gift	alphanumeric	A setting of Y indicates that the order is flagged as a gift; otherwise, set to N .

Message Element or Attribute	Alpha/numeric	Description
shipComplete	alphanumeric	A setting of Y indicates that the order is flagged to ship complete; otherwise, set to N .
balanceDue	numeric	The balance due, if any, for a prepaid order; otherwise, set to 0 . Can include a 2-position decimal.
orderMessages	alphanumeric	Any order-level message lines flagged to print on pick slips (P) or both pick slip and invoices (B). Up to 60 positions each. Each line is separated by a newline character (for example, \r\). Lines flagged for pick slips are before lines flagged for both.
giftMessages	alphanumeric	Any order-level message lines flagged as gift messages (G). Up to 60 positions each. Each line is separated by a newline character (for example, \r\).
payments Example: <pre> "payments": [{ "tenderDescription": "MASTERCARD", "tenderAmount": 0, "tenderAccount": "" }] </pre>		Each payment method on the sales order.
tenderDescription	alphanumeric	The description of the pay type. Up to 30 positions.
tenderAmount	numeric	The payment amount specified for the payment method. Can include a 2-position decimal. Credit card payment methods have a tenderAmount of 0.
tenderAccount	alphanumeric	Blank.

Message Element or Attribute	Alpha/numeric	Description
soldTo Example: <pre>"soldTo": { "customerNo": "144", "companyName": "SAMPLE INDUSTRIES", "prefix": "MR.", "first": "FIRST", "middle": "Q", "last": "LAST", "suffix": "ESQ", "apt": "ABC123", "address1": "257 SAMPLE STREET", "address2": "SECOND ADDRESS LINE", "address3": "THIRD ADDRESS LINE", "address4": "FOURTH ADDRESS LINE", "city": "WORCESTER", "province": "MA", "postal": "01602", "country": "USA", "email": "jasample@example.com", "dayPhone": "(508) 555-0100", "eveningPhone": "(508) 555-0101" },</pre>		The sold-to customer who placed the sales order.
customerNo	alphanumeric	The number identifying the customer in the originating system. Up to 9 positions.
companyName	alphanumeric	The name of the customer's company, if any. Note: The sold-to customer has either a first and last name or a company name, or both.
prefix	alphanumeric	The prefix for the sold-to customer's name, such as Mr. or Dr. Up to 3 positions.
first	alphanumeric	The customer's first name. Up to 15 positions.
middle	alphanumeric	The customer's middle initial. One position.
last	alphanumeric	The customer's last name. Up to 25 positions.
suffix	alphanumeric	The suffix for the sold-to customer's name, such as Jr. or Esq. Up to 3 positions.
apt	alphanumeric	The customer's apartment or suite number, if any. Up to 10 positions.

Message Element or Attribute	Alpha/numeric	Description
address1 through address4	alphanumeric	Up to 4 address lines of up to 32 positions each for the sold-to customer's address. At least one address line is required.
city	alphanumeric	The city for the sold-to customer. Up to 25 positions.
province	alphanumeric	The code identifying the sold-to customer's state or province. Always included for addresses in the US and Canada. Two positions.
postal	alphanumeric	The zip or postal code for the sold-to customer. Up to 10 positions.
country	alphanumeric	The 2-position or 3-position code identifying the country for the sold-to customer.
email	alphanumeric	The sold-to customer's email address from the sales order. Up to 50 positions.
dayPhone	alphanumeric	The sold-to customer's daytime phone number. Up to 14 positions, including any formatting. Does not include any extension.
eveningPhone	alphanumeric	The sold-to customer's evening phone number. Up to 14 positions, including any formatting. Does not include any extension.

Message Element or Attribute	Alpha/numeric	Description
shipTo Example: <pre>"shipTo": { "attention": "", "companyName": "SAMPLE INDUSTRIES", "prefix": "MR.", "first": "FIRST", "middle": "Q", "last": "LAST", "suffix": "ESQ", "apt": "ABC123", "address1": "257 SAMPLE STREET", "address2": "SECOND ADDRESS LINE", "address3": "THIRD ADDRESS LINE", "address4": "FOURTH ADDRESS LINE", "city": "WORCESTER", "province": "MA", "postal": "01602", "country": "USA", "email": "jasample@example.com", "dayPhone": "(508) 555-0100", "eveningPhone": "(508) 555-0101" },</pre>		The shipping address for the order.
attention	alphanumeric	The attention line for the sales order. Up to 30 positions.
companyName	alphanumeric	The name of the customer's company, if any. Note: The ship-to address has either a first and last name or a company name, or both.
prefix	alphanumeric	The prefix for the ship-to customer's name, such as Mr. or Dr. Up to 3 positions.
first	alphanumeric	The customer's first name. Up to 15 positions.
middle	alphanumeric	The customer's middle initial. One position.
last	alphanumeric	The customer's last name. Up to 25 positions.
suffix	alphanumeric	The suffix for the ship-to customer's name, such as Jr. or Esq. Up to 3 positions.
apt	alphanumeric	The apartment or suite number, if any. Up to 10 positions.

Message Element or Attribute	Alpha/numeric	Description
address1 through address4	alphanumeric	Up to 4 address lines of up to 32 positions each for the shipping address. At least one address line is required.
city	alphanumeric	The city for the shipping address. Up to 25 positions.
province	alphanumeric	The code identifying the shipping address's state or province. Always included for addresses in the US and Canada. Two positions.
postal	alphanumeric	The zip or postal code for the shipping address. Up to 10 positions.
country	alphanumeric	The 2-position or 3-position code identifying the country for the shipping address.
email	alphanumeric	The email address for the shipping address. Up to 50 positions.
dayPhone	alphanumeric	The daytime phone number. Up to 14 positions, including any formatting. Does not include any extension.
eveningPhone	alphanumeric	The evening phone number. Up to 14 positions, including any formatting. Does not include any extension.
poDetail Example: <pre>"poDetail": [{ "poId": 0, "poLineNo": 1, "vendorItemID": "V10DUCK", "vendorItemDescription": "VENDOR 10 RUBBER DUCK", "itemUPCCd": "", "itemEANCd": "", "poUnitPrice": 0.25, "poUOMCd": "EA", "vendorUOMCd": "EA", "poQtyOrdered": 2, "vendorOrderedQty": 2, "vendorUnitPrice": 0.25, "carrierCd": "4", "carrierName": "Auto Created 4", "poLineDueDate": "2013-10-01T00:00:00.000", "poLineCancelAfterDate": "" }]</pre>	Each item on the purchase order.	
poId	alphanumeric	Set to 0 .

Message Element or Attribute	Alpha/numeric	Description
poLineNo	numeric	A unique number identifying the item on the purchase order. Up to 3 positions.
vendorItemID	alphanumeric	The number or code identifying the vendor item. Up to 20 positions.
vendorItem Description	alphanumeric	The description of the vendor item. Up to 30 positions.
itemUPCCd	alphanumeric	The UPC barcode, if any, identifying the item. Up to 40 positions.
itemEANCd	alphanumeric	The EAN barcode, if any, identifying the item. Up to 40 positions.
poUOMCd	alphanumeric	The unit of measure code. Informational only; unit of measure conversion is not supported. Up to 3 positions.
vendorUOMCd	alphanumeric	The vendor's unit of measure code. Informational only; unit of measure conversion is not supported. Up to 3 positions.
poQtyOrdered	numeric	The total ordered quantity of the item. Up to 7 positions.
vendorOrderedQty	numeric	The total ordered quantity of the item. The same as the poQtyOrdered. Up to 7 positions.
vendorUnitPrice	numeric	The vendor's unit price for the item. Can include a 4-position decimal.
carrierCd	alphanumeric	The number identifying the carrier for the purchase order line. Up to 2 positions.
carrierName	alphanumeric	The description of the carrier. Up to 30 positions.
poLineDueDate	datetime	The due date specified for the purchase order line. Datetime format, with the time set to zeroes (for example, 2013-10-04T00:00:00.000).
poLineCancelAfter Date	datetime	The date to cancel the line if it cannot be fulfilled. Not implemented in integration with Oracle Retail Order Management System Cloud Service.

Message Element or Attribute	Alpha/numeric	Description
orderDetail Example: <pre>"orderDetail": { "salesOrderItemID": "DUCK ", "salesOrderItemDescription": "SQUEAKY RUBBER DUCK", "salesOrderQtyOrdered": 2, "salesOrderUnitPrice": 1, "orderExtendedFreight": 0, "orderLineCustomizationCharge": 0, "orderLineEntryDate": "2013-09- 27T09:21:26.470", "orderLineGiftWrap": "N", "orderLineShipAlone": " ", "customizationMessage": []</pre>		Information about the line on the sales order. The customizationMessage name/value pair is after the orderLineTax name/value pair.
salesOrderItemID	alphanumeric	The item/SKU code from the originating system. Up to 27 positions.
salesOrderItem Description	alphanumeric	The description of the item to display to the customer. Up to 40 positions.
salesOrderQty Ordered	numeric	The quantity on the order detail line.
salesOrderUnitPrice	numeric	The customer's unit price for the item. The price is zero if the order is flagged as a gift. Can include a 2-position decimal.
orderExtendedFreight	numeric	The total freight at the purchase order line level, if any. Can include a 2-position decimal.
orderLine CustomizationCharge	numeric	The total special handling charges for the order line. Can include a 2-position decimal.
orderLineEntryDate	datetime	The date and time when the order line was created. Datetime format.
orderLineGiftWrap	alphanumeric	Set to Y if the order line requires gift wrapping; otherwise, set to N .
orderLineShipAlone	alphanumeric	Set to S if the item should ship alone; otherwise, blank.

Message Element or Attribute	Alpha/numeric	Description
customizationMessage Example: <pre> customizationMessage": [{ "customizationCd": "COLOR FLD LBL", "customizationMessage": "black" }, { "customizationCd": "FIRST NAME LABEL", "customizationMessage": "Jake" }, { "customizationCd": "LAST NAME LABEL", "customizationMessage": "Van Voorhis" }] </pre>		Special handling instructions for the item.
customizationCd	alphanumeric	The field label identifying the customization element. Up to 15 positions.
customization Message	alphanumeric	The message, information, or instructions for the customization. Up to 45 positions.
orderLineTax Example: <pre> "orderLineTax": [{ "taxDescription": "GST", "taxAmount": 0 }, { "taxDescription": "PST", "taxAmount": 0 }, { "taxDescription": "Tax", "taxAmount": 0.13 }], </pre>		The tax on the order line.
taxDescription	alphanumeric	The description of the tax. Set to GST , PST , or Tax . The GST and PST amounts, if any, are included in the Tax amount.
taxAmount	numeric	The tax amount of each type for the detail line. Can include a 4-position decimal.

Message Element or Attribute	Alpha/numeric	Description
messageHeader Example: <pre> "messageHeader": { "datetime": "2013-09-27T09:24:42.019", "version": "4.5", "source": "locate", "destination": "sample" }, </pre>		Basic communication information.
datetime	datetime	The date and time when the response message was generated.
version	numeric	From the version in the getDSOrders Request Message .
source	alphanumeric	From the destination in the getDSOrders Request Message .
destination	alphanumeric	From the source in the getDSOrders Request Message .
messageBody Example: <pre> "messageBody": { "vendorCd": "10", "vendorSystemCd": "vendor", "batchSize": 1, "remaining": 0, "batchID": 1226, "responseCd": "0", "responseDescription": "" } </pre>		Basic information about the vendor and other criteria specified in the request message, and information on whether the response was successful.
vendorCd	alphanumeric	The number assigned by the retailer to identify the vendor fulfilling the drop ship order. From the vendorCd in the getDSOrders Request Message .
vendorSystemCd	alphanumeric	The vendor system code assigned by the retailer. From the vendorSystemCd in the getDSOrders Request Message .

Message Element or Attribute	Alpha/numeric	Description
batchSize	numeric	<p>If the request <code>criteriaType</code> was:</p> <ul style="list-style-type: none"> • Item: The number of purchase orders included in the batch. From the <code>batchSize</code> from the request message or the number of new purchase orders including the item and not previously assigned to a batch, whichever is lower. • PO: Set to 1, regardless of the <code>batchSize</code> specified in the request. • Batch: Set to 1, regardless of the <code>batchSize</code> specified in the request and the number of purchase orders included in the response. • All PO: The number of purchase orders included in the batch. From the <code>batchSize</code> from the request message or the number of new purchase orders not previously assigned to a batch, whichever is lower.
remaining	numeric	The remaining number of purchase orders matching the criteria specified in the request message. This number might be higher than zero when, for example, the request message specifies an item and a <code>batchSize</code> that is lower than the total number of new purchase orders for the item.
batchID	numeric	The number assigned to identify the batch of purchase orders.
responseCd	numeric	Set to 0 if the response includes at least one purchase order. See Troubleshooting the getDSOrders response on page 3-4 for information on other possible response codes.
responseDescription	alphanumeric	Blank if the response includes at least one purchase order. See Troubleshooting the getDSOrders response on page 3-4 for information on other possible response descriptions.

setDSAcknowledge Request Message

Overview: Use the setDSAcknowledge request message to acknowledge the receipt of a batch of purchase orders from Oracle Retail Order Broker.

Required? Acknowledgement of a batch is required only if the vendor is configured with the *Require Acknowledgement* preference selected under the **Integration and PO Schedule** folder. With this setting, the purchase orders in a batch remain in **New Order** status after Oracle Retail Order Broker sends them in the [getDSOrders Response Message](#), and you need to send the setDSAcknowledge message to change their status to **In Process**.

In this chapter:

- [Sample setDSAcknowledge Request Message](#) on page 4-1
- [setDSAcknowledge Request Message Contents](#) on page 4-2

For more information: See:

- [Vendor Integration Overview](#) on page 1-1 for background
- [getDSOrders Response Message](#) on page 3-1

Sample setDSAcknowledge Request Message

The following sample acknowledges a batch of purchase orders.

```
{
  "messageHeader": {
    "datetime": "2013-09-25T13:42:12",
    "version": "4.5",
    "source": "abcde",
    "destination": "locate"
  },
  "vendorCd": "11",
  "vendorSystemCd": "vendor",
  "batchId": "1326"
}
```

setDSAcknowledge Request Message Contents

Message Element or Attribute	Alpha/numeric	Description
messageHeader Example: <pre>"messageHeader": { "datetime": "2013-09-25T13:42:12", "version": "4.5", "source": "ABCDE", "destination": "locate" }</pre>		
datetime	datetime	Standard datetime format (YYYY-MM-DDTHH:MM:SS, or 2013-09-25T07:32:01). Required, and must be formatted correctly; should not include the offset from Greenwich Mean Time (for example, pass 2013-09-25T03:02:47.118 rather than 2013-09-25T03:02:47.118-05:00).
version	alphanumeric	Indicates the current version of Oracle Retail Order Broker. Must be set to 4.5 or higher. Required.
source	alphanumeric	The external system originating the request. Required.
destination	alphanumeric	The name of the Oracle Retail Order Broker database. Must match the <i>Account</i> value specified at the Tenant - Admin screen; however, not case-sensitive. Normally set to <code>locate</code> .
Identifying information Example: <pre>"vendorCd": "11", "vendorSystemCd": "vendor", "batchId": "1326" }</pre>		
vendorCd	alphanumeric	A code identifying the vendor to fulfill the purchase orders. Required.
vendorSystemCd	alphanumeric	A code identifying the default vendor system for the organization (not the system originating the purchase orders). Required.
batchId	numeric	The batch that is being acknowledged.

setDSAcknowledge Response Message

Overview: The Supplier Direct Fulfillment module sends the setDSAcknowledge response message when it receives the [setDSAcknowledge Request Message](#) confirming that a batch of purchase orders was received through the [getDSOrders Response Message](#).

Acknowledgement is by batch only. It is not possible to acknowledge individual purchase orders.

In this chapter:

- [Sample setDSAcknowledge Response Message](#) on page 5-1
- [Troubleshooting the setDSAcknowledge response](#) on page 5-2
- [getDSAcknowledge Response Message Contents](#) on page 5-3

For more information: See:

- [Vendor Integration Overview](#) on page 1-1 for background
- [setDSAcknowledge Request Message](#) on page 4-1 for information on the request message

Sample setDSAcknowledge Response Message

The following sample indicates that the batch was successfully acknowledged.

```
{
  "messageHeader": {
    "datetime": "2013-10-03T09:59:31.734",
    "version": "4.5",
    "source": "locate",
    "destination": "abcde"
  },
  "messageBody": {
    "vendorCd": "257",
    "vendorSystemCd": "vendor",
    "batchID": 1394,
    "responseCd": "0",
    "responseDescription": "Successfully Updated"
  }
}
```

Troubleshooting the setDSAcknowledge response

If the response does not indicate that the batch was successfully updated, the responseCd and responseDescription indicate the problem identifying the batch.

Sample Unsuccessful Response

The following sample indicates that the batch has already been acknowledged.

```
{
  "messageHeader": {
    "datetime": "2013-10-03T10:11:25.262",
    "version": "4.5",
    "source": "locate",
    "destination": "abcde"
  },
  "messageBody": {
    "vendorCd": "257",
    "vendorSystemCd": "vendor",
    "responseCd": "3021",
    "responseDescription": "Request already at provided status. "
  }
}
```

Response Codes and Descriptions

The following table lists possible response codes and descriptions returned if there are no new purchase orders matching the criteria passed in the request message.

responseCd	responseDescription	Explanation
3000	FAILED - Invalid or Missing Destination (locateq)	The destination specified in the request did not match the <i>Account</i> specified at the Tenant - Admin screen.
3001	FAILED - Message version 4.5 or higher required.	The version specified in the request was lower than 4.5.
3002	Invalid or missing vendor code, (vendorCd) is required.	No vendorCd was specified in the request.
3003	Invalid or missing vendor system code, (vendorSystemCd) is required.	No vendorSystemCd was specified in the request.
3004	Invalid vendor system code, system (vendorq) does not exist.	The vendorSystemCd is not a valid system.
3005	Invalid vendor code, vendor (12345) does not exist in system (vendor).	The vendorCd is not valid for the vendorSystemCd. The vendorSystemCd needs to specify the vendor system, not the system where the purchase order originates.

responseCd	responseDescription	Explanation
3020	Invalid batch, batch id (1396) is not associated to vendor (257).	The batchId specifies a batch that is not valid for the vendorCd.
3021	Request already at provided status.	The batchId specified has already been acknowledged.

getDSAcknowledge Response Message Contents

Message Element or Attribute	Alpha/numeric	Description
messageHeader Example: <pre>{ "messageHeader": { "datetime": "2013-10-03T09:59:31.734", "version": "4.5", "source": "locate", "destination": "abcde" }, }</pre>		Basic communication information.
datetime	datetime	The date and time when the response message was generated. Based on the retailer's system's time.
version	numeric	From the version in the setDSAcknowledge Request Message .
source	alphanumeric	From the destination in the setDSAcknowledge Request Message .
destination	alphanumeric	From the source in the setDSAcknowledge Request Message .
messageBody Example: <pre>"messageBody": { "vendorCd": "257", "vendorSystemCd": "vendor", "batchID": 1394, "responseCd": "0", "responseDescription": "Successfully Updated" }</pre>		Returns the information from the request and indicates whether the request was successful.

Message Element or Attribute	Alpha/numeric	Description
vendorCd	alphanumeric	The number assigned by the retailer to identify the vendor fulfilling the drop ship order. From the <code>vendorCd</code> in the setDSAcknowledge Request Message .
vendorSystemCd	alphanumeric	The vendor system code assigned by the retailer. From the <code>vendorSystemCd</code> in the setDSAcknowledge Request Message .
remaining	numeric	The remaining number of purchase orders matching the criteria specified in the request message. This number might be higher than zero when, for example, the request message specifies an item and a <code>batchSize</code> that is lower than the total number of new purchase orders for the item.
batchID	numeric	The number assigned to identify the batch of purchase orders.
responseCd	numeric	Set to 0 if the acknowledgement was successful. See Troubleshooting the setDSAcknowledge response on page 5-2 for information on other possible response codes.
responseDescription	alphanumeric	Set to <code>Successfully Updated</code> if the acknowledgement was successful. See Troubleshooting the setDSAcknowledge response on page 5-2 for information on other possible response descriptions.

setDSShipConfirm Request Message

Overview: Use the setDSShipConfirm request message to confirm full or partial shipment of a purchase order.

In this chapter:

- [Sample setDSShipConfirm Request Message](#) on page 6-1
- [setDSShipConfirm Request Message Contents](#) on page 6-2

For more information: See:

- [Vendor Integration Overview](#) on page 1-1 for background
- [setDSShipConfirm Response Message](#) on page 7-1

Sample setDSShipConfirm Request Message

The following sample confirms shipment of two lines on a purchase order.

```
{
  "messageHeader": {
    "datetime": "2013-10-03T13:42:12",
    "version": "4.5",
    "source": "abcde",
    "destination": "locate"
  },
  "poNo": "619",
  "vendorCd": "10",
  "vendorSystemCd": "vendor",
  "carrierCd": "UPS",
  "meterCharges": 7.25,
  "shipDate": "2013-10-03T13:42:12",
  "actualWeight": 1.5,
  "trackingNumber": "ABC12345",
  "detail": [
    {
      "poLineNo": 1,
      "shippedQty": 2
    },
    {
      "poLineNo": 2,
      "shippedQty": 1
    }
  ]
}
```

setDSShipConfirm Request Message Contents

Message Element or Attribute	Alpha/numeric	Description
messageHeader Example: <pre>"messageHeader": { "datetime": "2013-10-03T13:42:12", "version": "4.5", "source": "ABCDE", "destination": "locate" }</pre>		
datetime	datetime	Standard datetime format (YYYY-MM-DDTHH:MM:SS, or 2013-09-25T07:32:01). Required, and must be formatted correctly; should not include the offset from Greenwich Mean Time (for example, pass 2013-09-25T03:02:47.118 rather than 2013-09-25T03:02:47.118-05:00).
version	alphanumeric	Indicates the current version of Oracle Retail Order Broker. Must be set to 4.5 or higher. Required.
source	alphanumeric	The external system originating the request. Required.
destination	alphanumeric	The name of the Oracle Retail Order Broker database. Must match the <i>Account</i> value specified at the Tenant - Admin screen. Required.
Shipment identifying information Example: <pre>"poNo": "619", "vendorCd": "10", "vendorSystemCd": "vendor", "carrierCd": "UPS", "meterCharges": 7.25, "shipDate": "2013-10-03T13:42:12", "actualWeight": 1.5, "trackingNumber": "ABC12345",</pre>		
poNo	alphanumeric	The number identifying the purchase order shipped.
vendorCd	alphanumeric	A code identifying the vendor shipping the purchase order. The vendor code is displayed in the Vendor Portal at the Vendor Configuration screen. Required.

Message Element or Attribute	Alpha/numeric	Description
vendorSystemCd	alphanumeric	A code identifying the default vendor system for the organization (not the system originating the purchase orders). Required.
carrierCd	alphanumeric	A code identifying the ship via used to ship the purchase order. Must be a valid code for a carrier assigned to the vendor. Does not need to be flagged as Active . Displayed in the Vendor Portal at the Carriers tab of the Vendor Configuration screen. Required.
meterCharges	numeric	Information will be provided at a later date.
shipDate	datetime	The date when the shipment took place. Can be a future date, but cannot be earlier than the date when the purchase order was created. Standard datetime format (YYYY-MM-DDTHH:MM:SS, or 2013-09-25T07:32:01). Required, and must be formatted correctly; should not include the offset from Greenwich Mean Time (for example, pass 2013-09-25T03:02:47.118 rather than 2013-09-25T03:02:47.118-05:00).
actualWeight	numeric	The shipping weight. Information will be provided at a later date.
trackingNumber	alphanumeric	The tracking number that the customer can use to track the shipment. Required if the <i>Tracking # Required</i> flag is selected for the carrier.
Shipment detail information Example: <pre>"detail": [{ "poLineNo": 1, "shippedQty": 2 }, { "poLineNo": 2, "shippedQty": 1 }]</pre>		Identifies the purchase order line number shipped and the shipment quantity. Can include multiple lines on a single purchase order.
poLineNo	numeric	Identifies the line number shipped. Required.

Message Element or Attribute	Alpha/numeric	Description
shippedQty	numeric	Identifies the quantity shipped. Must be a valid quantity greater than 1 and not greater than the printed quantity. Required.

setDSShipConfirm Response Message

Overview: The Supplier Direct Fulfillment module sends the setDSShipConfirm response message when it receives the [setDSShipConfirm Request Message](#) confirming that a purchase order has been shipped.

In this chapter:

- [Sample setDSShipConfirm Response Message](#) on page 7-1
- [Troubleshooting the setDSShipConfirm response](#) on page 7-2
- [setDSShipConfirm Response Message Contents](#) on page 7-4

For more information: See:

- [Vendor Integration Overview](#) on page 1-1 for background
- [setDSShipConfirm Request Message](#) on page 6-1 for information on the request message

Sample setDSShipConfirm Response Message

The following sample indicates that the shipment was successfully confirmed.

```
{
  "errorDetail": [],
  "messageHeader": {
    "datetime": "2013-10-14T15:30:32.094",
    "version": "4.5",
    "source": "locate",
    "destination": "test"
  },
  "messageBody": {
    "vendorCd": "VND",
    "vendorSystemCd": "vendor",
    "poNo": "746",
    "carrierCd": "50",
    "meterCharges": 1,
    "shipDate": "2013-12-14T13:42:12",
    "actualWeight": 1,
    "trackingNumber": "ABC12345",
    "responseCd": "0",
    "responseDescription": "Successfully Updated"
  }
}
```

Troubleshooting the setDSShipConfirm response

If the response does not include at least one purchase order, the `responseCd` and `responseDescription` indicate the shipment confirmation was unsuccessful.

Sample Unsuccessful Response

The following sample indicates that the request did not specify a valid carrier associated with the vendor.

```
{
  "errorDetail": [],
  "messageHeader": {
    "datetime": "2013-10-22T16:33:23.280",
    "version": "4.5",
    "source": "locate",
    "destination": "sample"
  },
  "messageBody": {
    "vendorCd": "11",
    "vendorSystemCd": "vendor",
    "poNo": "724",
    "carrierCd": "50",
    "meterCharges": 0,
    "shipDate": "2013-10-14T13:42:12",
    "actualWeight": 0,
    "trackingNumber": "ABC1234",
    "responseCd": "3034",
    "responseDescription": "Shipping Weight is a required field. "
  }
}
```

Response Codes and Descriptions

The following table lists possible response codes and descriptions returned if shipment specified in the request message could not be confirmed.

responseCd	responseDescription	Explanation
3000	FAILED - Invalid or Missing Destination (locateq)	The destination specified in the request did not match the <i>Account</i> specified at the Tenant - Admin screen, typically set to <code>locate</code> .
3001	FAILED - Message version 4.5 or higher required.	The version specified in the request was lower than 4.5.
3002	Invalid or missing vendor code, (vendorCd) is required.	No vendorCd was specified in the request.
3003	Invalid or missing vendor system code, (vendorSystemCd) is required.	No vendorSystemCd was specified in the request.
3004	Invalid vendor system code, system (vendorg) does not exist.	The vendorSystemCd is not a valid system.

responseCd	responseDescription	Explanation
3005	Invalid vendor code, vendor (12345) does not exist in system (vendor).	The vendorCd is not valid for the vendorSystemCd. The vendorSystemCd needs to specify the vendor system, not the system where the purchase order originates.
3031	Invalid PO (999) is not associated to vendor (11).	The poNo specified is not a valid purchase order number for the vendor.
3032	Invalid Carrier (a) is not associated to vendor (11).	The carrierCd specified is not a valid carrier for the vendor.
3033	Tracking Number is a required field.	No trackingNumber is specified, and the tracking number is required for the carrier.
3034	Shipping Weight is a required field.	The actualWeight specified is 0, and the shipping weight is required for the carrier.
3035	Shipping Rate is a required field.	The meterCharges is 0, and shipping rate is required for the carrier.
3036	Ship Date is invalid.	No shipDate is specified.
3037	Ship Date is invalid, ship date cannot be before create date.	The shipDate is before the date when the purchase order was created.
3038	Carrier is a required field.	No carrierCd is specified.
3042	Invalid PO Line (99) is not associated to PO (747).	The poLineNo does not specify an existing line on the purchase order. This error detail response occurs with header-level error 3050, described below.
3043	Invalid Qty, shipped quantity.	The shippedQty is 0. This error detail response occurs with header-level error 3050, described below.
3044	Invalid Qty, shipped quantity cannot exceed the available to ship.	The shippedQty specified exceeds the unshipped, uncanceled quantity on the purchase order line. This error detail response occurs with header-level error 3050, described below.
3050	Invalid PO Lines provided.	The poLineNo does not specify an open purchase order line.

setDSShipConfirm Response Message Contents

Message Element or Attribute	Alpha/numeric	Description
errorrrDetail Example: <pre>"errorrrDetail": [{ "poLineNo": 1, "shippedQty": 1, "responseCd": "3044", "responseDescription": "Invalid Qty, shipped quantity cannot exceed the available to ship. " }],</pre>		Includes information if there is an error related to a purchase order line. See Response Codes and Descriptions on page 7-2 for more information.
poLineNo	numeric	The purchase order line number in error.
shippedQty	numeric	The shipped quantity indicated for the purchase order line number in error.
responseCd	numeric	The response code associated with the error.
responseDescription	alphanumeric	The description of the error.
messageHeader Example: <pre>{ "messageHeader": { "datetime": "2013-10-03T09:59:31.734", "version": "4.5", "source": "locate", "destination": "abcde" } },</pre>		Basic communication information.
datetime	datetime	The date and time when the response message was generated. In the retailer's system's time zone.
version	numeric	From the <code>version</code> in the setDSShipConfirm Request Message .
source	alphanumeric	From the <code>destination</code> in the setDSShipConfirm Request Message .
destination	alphanumeric	From the <code>source</code> in the getDSOrders Request Message .

Message Element or Attribute	Alpha/numeric	Description
messageBody Example: <pre> "messageBody": { "vendorCd": "257", "vendorSystemCd": "vendor", "poNo": "746", "carrierCd": "50", "meterCharges": 1, "shipDate": "2013-12-14T13:42:12", "actualWeight": 1, "trackingNumber": "ABC12345", "responseCd": "0", "responseDescription": "Successfully Updated" } </pre>		Returns the information from the request and indicates whether the request was successful.
vendorCd	alphanumeric	The number assigned by the retailer to identify the vendor fulfilling the drop ship order. From the <code>vendorCd</code> in the setDSShipConfirm Request Message .
vendorSystemCd	alphanumeric	The vendor system code assigned by the retailer. From the <code>vendorSystemCd</code> in the setDSShipConfirm Request Message .
poNo	alphanumeric	From the <code>poNo</code> in the setDSShipConfirm Request Message .
carrierCd	alphanumeric	From the <code>carrierCd</code> in the setDSShipConfirm Request Message .
meterCharges	numeric	From the <code>meterCharges</code> in the setDSShipConfirm Request Message .
shipDate	datetime	From the <code>shipDate</code> in the setDSShipConfirm Request Message .
actualWeight	numeric	From the <code>actualWeight</code> in the setDSShipConfirm Request Message .
trackingNumber	alphanumeric	From the <code>trackingNumber</code> in the setDSShipConfirm Request Message .
responseCd	numeric	Set to 0 if the acknowledgement was successful. See Troubleshooting the setDSShipConfirm response on page 7-2 for information on other possible response codes.

Message Element or Attribute	Alpha/numeric	Description
responseDescription	alphanumeric	Set to <code>Successfully Updated</code> if the acknowledgement was successful. See Troubleshooting the setDSShipConfirm response on page 7-2 for information on other possible response descriptions.