

Oracle® Hospitality e7 Point-of-Sale
Installation Guide
Release 4.2 EU
Part Number: E69411-01

November 2015

Copyright © 2011, 2015, Oracle and/or its affiliates. All rights reserved.

This software and related documentation are provided under a license agreement containing restrictions on use and disclosure and are protected by intellectual property laws. Except as expressly permitted in your license agreement or allowed by law, you may not use, copy, reproduce, translate, broadcast, modify, license, transmit, distribute, exhibit, perform, publish, or display any part, in any form, or by any means. Reverse engineering, disassembly, or decompilation of this software, unless required by law for interoperability, is prohibited.

The information contained herein is subject to change without notice and is not warranted to be error-free. If you find any errors, please report them to us in writing.

If this software or related documentation is delivered to the U.S. Government or anyone licensing it on behalf of the U.S. Government, then the following notice is applicable:

U.S. GOVERNMENT END USERS: Oracle programs, including any operating system, integrated software, any programs installed on the hardware, and/or documentation, delivered to U.S. Government end users are "commercial computer software" pursuant to the applicable Federal Acquisition Regulation and agency-specific supplemental regulations. As such, use, duplication, disclosure, modification, and adaptation of the programs, including any operating system, integrated software, any programs installed on the hardware, and/or documentation, shall be subject to license terms and license restrictions applicable to the programs. No other rights are granted to the U.S. Government.

This software or hardware is developed for general use in a variety of information management applications. It is not developed or intended for use in any inherently dangerous applications, including applications that may create a risk of personal injury. If you use this software or hardware in dangerous applications, then you shall be responsible to take all appropriate fail-safe, backup, redundancy, and other measures to ensure its safe use. Oracle Corporation and its affiliates disclaim any liability for any damages caused by use of this software or hardware in dangerous applications.

Oracle and Java are registered trademarks of Oracle and/or its affiliates. Other names may be trademarks of their respective owners.

Intel and Intel Xeon are trademarks or registered trademarks of Intel Corporation. All SPARC trademarks are used under license and are trademarks or registered trademarks of SPARC International, Inc. AMD, Opteron, the AMD logo, and the AMD Opteron logo are trademarks or registered trademarks of Advanced Micro Devices. UNIX is a registered trademark of The Open Group.

This software or hardware and documentation may provide access to or information about content, products, and services from third parties. Oracle Corporation and its affiliates are not responsible for and expressly disclaim all warranties of any kind with respect to third-party content, products, and services unless otherwise set forth in an applicable agreement between you and Oracle. Oracle Corporation and its affiliates will not be responsible for any loss, costs, or damages incurred due to your access to or use of third-party content, products, or services, except as set forth in an applicable agreement between you and Oracle.

Contents

Contents	iii
Tables	v
Figures	vi
Preface	vii
Audience	vii
Customer Support	vii
Documentation	vii
Revision History	vii
1 Prerequisites	1-1
Software	1-1
Compatible POS Hardware	1-1
Back-Office PC	1-4
2 Software Installation	2-1
CAL-Standalone Installation	2-1
CAL-Server Installation	2-1
Important Notes – Please Read	2-2
Back-Office PC Software	2-3
Prerequisites	2-3
e7 Software Installation	2-3
CAL-Server Installation: Workstation 4LX / 5 / 5A (WinCE)	2-6
CAL-Server Installation: Workstation 5A / 6 (Win32)	2-9
Mobile Device Installation: DT430SC / MC40	2-13
Standalone Installation	2-13
Workstation 4LX / 5 / 5A / and mTablet R-Series (Microsoft Windows CE) ..	2-13
Workstation 5A / 6 (Win32)	2-18
Mobile Device Installation	2-24
3 Backup and Restore a Database	3-1
Preliminary	3-1
Backup the Database	3-1
Restore the Database in Version 3.x	3-2
Restore the Database in Version 4.x	3-3
Restore a database taken from a version 3.x backup	3-3
Restore a database from a version 4.x backup file	3-3
Retrieve the Database	3-4
Backup Database Definitions	3-5
Restore Database Definitions	3-6
Appendix A: e7 System Config File	A-1

Appendix B: Hardware - Factory Restore B-1

- WS4 LX B-1
- WS5 - Microsoft Windows CE B-1
- WS5A B-2
 - Microsoft Windows CE 6.0 R3 - Recovery Button Procedure..... B-2
 - Microsoft Windows CE 6.0 R3 - USB Keyboard Procedure B-3
 - POSReady2009 Recovery CF Card - Recovery Button Procedure..... B-4
 - POSReady2009 Recovery CF Card - BIOS Factory Restore..... B-5
 - POSReady2009 - Using a Custom Recovery Image..... B-6
 - POSReady2009 - BIOS update B-6
- WebDT430 - Factory Recovery (USB) B-7
- MICROS Tablet R-Series B-8

Tables

Table 1 - Compatible POS Hardware.....	1-1
Table 2 - Compatible Printers, Scanners, and Cash Drawers	1-2
Table 3 - Upgrade From Version To Version Conversion.....	2-2

Figures

Figure 1 - CAL-Standalone Installation	2-1
Figure 2 - CAL-Server Installation	2-2
Figure 3 - WS4LX I/O Panel	2-14
Figure 4 - WS5 I/O Panel	2-14
Figure 5 - WS5A I/O Panel	2-14
Figure 6 - Base Station R-Series I/O Panel	2-14
Figure 7 - WS5A Factory Restore Button.....	B-3

Preface

Oracle Hospitality e7 Point-of-Sale (POS) is a Restaurant Management System targeting individual restaurateurs in segments like table-service and quick-service restaurants, delis, sandwich shops, bars, and more. In addition to the standard POS functionality, e7 Point-of-Sale provides time & attendance, real-time inventory, comprehensive reporting, customer management, and can be integrated to the Oracle Hospitality Cloud Services Reporting and Analytics, Gift and Loyalty, and Inventory Management.

Audience

This document is intended for all users of Oracle Hospitality e7 POS version 4.2 EU.

Customer Support

To contact Oracle Customer Support, access My Oracle Support at the following URL: <https://support.oracle.com>

When contacting Customer Support, please provide the following:

- Product version and program/module name
- Functional and technical description of the problem (include business impact)
- Detailed step-by-step instructions to re-create
- Exact error message received
- Screen shots of each step you take

Documentation

Oracle Hospitality product documentation is available on the Oracle Help Center at <http://docs.oracle.com/en/industries/hospitality/>

Revision History

Date	Description of Change
November 2015	<ul style="list-style-type: none">• Initial publication.

1 Prerequisites

Software

- Oracle Hospitality e7 Point-of-Sales Version 4.2.0 EU
File name: Oracle Hospitality e7 Point-of-Sale Version 4.2.0.EU.zip
- Installing e7 on a Back-Office PC requires Microsoft's .NET Framework 3.5 to be installed.

Compatible POS Hardware

The following Workstations and Mobile Devices are supported by e7 POS version 4.2 EU.

Table 1 – Compatible POS Hardware

HW Type	Description	OS / FW Version	Remarks
Stationary POS Device	Workstation 4LX	OS: Microsoft Windows CE 6.0 R3 OS image: GR 1.4 CAL (min): 6.1.3.68 BIOS: H1003c	
Stationary POS Device	Workstation 5	OS: Microsoft Windows CE 6.0 R3 OS image: GR 2.1 CAL (min): 7.1.3.68 BIOS: G1025	
Stationary POS Device	Workstation 5A	OS: Microsoft Windows CE 6.0 R3 OS image: GR 2.0 CAL (min): 13.1.3.101 BIOS: Q2010g	
Stationary POS Device	Workstation 5A	OS: Microsoft POSReady2009 OS image: 2.1 CAL (min): 3.1.3..117 BIOS: Q2011d	
Stationary POS Device	Workstation 6	OS: Microsoft Windows Embedded 8.1 Industry Pro OS image: M3.7 CAL (min): 3.1.3..129 BIOS: W1300k	

HW Type	Description	OS / FW Version	Remarks
Portable POS Device	MICROS Tablet R-Series	OS: Microsoft Windows EC7 OS image: PV1.4 CAL (min): 21.1.3.124	Does not support mobile operations. Use of the mStation is mandatory.
Mobile POS Device	Zebra MC40	OS: Microsoft Windows EC 7 OS image: MC40M0c70BenU81.44.02v1.1	Does not support integrated scanner
Mobile POS Device	WebDT 430SC	OS: Microsoft Windows CE 6.0 R3 OS image: DT430SCUSMicrosC600.0001.03202012 or DT430SCENUSTC600.0009.01242015	

The following printers, scanners, and cash drawers are supported by e7 POS version 4.2 EU.

Table 2 – Compatible Printers, Scanners, and Cash Drawers

HW Type	Description	OS / FW Version	Remarks
Thermal Printer	Epson TM-T88 IV (serial, IDN, Ethernet)	Printer FW: 10.02 Ethernet: 1.01 IDN: 2.04	
Thermal Printer	Epson TM-T88 V (serial, IDN, Ethernet)	Printer FW: 30.12 Ethernet: 1.07a IDN: 2.04 or 4.02	
Thermal Printer	Bixolon SRP350 (serial)	Printer: 6.34	
Thermal Printer	Bixolon SRP350II (serial)	Printer FW: v01.04 STB072011	
Thermal Printer	Bixolon SRP350III (serial)	Printer FW: v01.00 STB010214	
Thermal Printer	Bixolon SRP350plus (serial, Ethernet)	Printer: 01.05. STB 081511 Ethernet FW: IFA-EP v2.1	
Thermal Printer	Bixolon SRP350plusII (serial, Ethernet)	Printer FW: v01.09a STB083012 Ethernet FW: IFA-EP v2.1	

HW Type	Description	OS / FW Version	Remarks
Thermal Printer	Bixolon SRP350plusIII (serial, Ethernet)	Printer: Ethernet/Serial On Board	
Impact Printer	Epson TM-U220B (serial, IDN, Ethernet)	BIOS: 5.00 MI BooT: 5.00 MI Ethernet: 1.07a IDN: 2.04. or 4.02	
Impact Printer	Bixolon SRP275 (serial, Ethernet)	Printer: 01.01 STB 080411 Ethernet FW: 2.1	
Impact Printer	Bixolon SRP275II (serial, Ethernet)	Printer: 01.01STB2011.08.25 Ethernet FW: 2.1	
Slip Printer	Epson TM-U295 (serial)	BIOS: 3.00 Boot: 3.00	
Mobile Printer	Bixolon SPP-R200 (Bluetooth, WLAN)	V1.01 STOB 030609	Bluetooth only supported with handheld devices
Mobile Printer	Bixolon SPP-R200II (Bluetooth, WLAN)	V01.00 STOBa GLP051915	Bluetooth only supported with handheld devices
Mobile Printer	Bixolon SPP-R300 (Bluetooth, WLAN)	V1.01 STOB 111811	Bluetooth only supported with handheld devices
Scanner	Symbol LS2208 (serial)	n/a	
Cash Drawer	APG Series 4000	n/a	Requires Series-1 or Series-2 DIN connector
Cash Drawer	APG Series 100	n/a	Requires Series-1 or Series-2 DIN connector
Cash Drawer	APG Vasario	n/a	Requires Series-1 or Series-2 DIN connector
Cash Drawer	APG Flip Top	n/a	Requires Series-1 or Series-2 DIN connector

Back-Office PC

The e7 Back Office allows running administrative tasks in the background without interrupting the restaurant operations. For example, administrative tasks are closing the day, pulling reports, adjust prices, correct employee time punches etc. However, all these administrative tasks can also be done directly at the point-of-sale device. This makes the use of a Back-Office PC optional.

There are just a few functions in e7 making the use of a Back-office PC mandatory, which include the following:

- Connecting to iCare
- Safekeeping of Report/Historical/Time-Card Details up to 750 days (instead of 45, 60, 60 days respectively)
- Serial PMS Interface (TCP/IP PMS interface does not require a Back-Office PC)
- WinPrint Interface

Using the e7 Back-Office application requires one of the following operating systems:

- Microsoft Windows Vista Business Edition
- Microsoft Windows 7 Professional (32-bit and 64-bit)
- Microsoft Windows 8 Professional (32-bit and 64-bit)
- Microsoft Windows 8.1 Professional (32-bit and 64-bit)
- Microsoft Windows 10 Professional (32-bit and 64-bit)

For the proper configuration, you must take into account that the e7 Back-Office application consumes:

- 512MB RAM
- 20 GB Hard Disk

2 Software Installation

The Client Application Loader (CAL) technology is used to install and update the e7 software on workstations. The Client Application Loader (CAL) is a mechanism that allows for the seamless distribution, installation, and maintenance of software. To install, software CAL-packages need to be created and transferred to the workstation. Each consists of an installation script and associated files.

The e7 setup provides the following 4 CAL-package:

1. Platform update package
2. CAL update package
3. BIOS update package
4. E7 Software package

e7 provides two approaches to install the software

- CAL-Standalone Installation – This installation will be used when e7 should be installed on workstations only, without a Back-Office PC.
- CAL-Server Installation – This installation is used when a Back-Office PC is configured in the system.

CAL-Standalone Installation

Within the CAL-Standalone approach, the CAL-packages are copied to an USB drive that are inserted in the workstation. The installation process is started by running an executable.



Figure 1 – CAL-Standalone Installation

CAL-Server Installation

Along with the e7 Back-Office setup, the CAL-Server will be installed on the PC and the CAL-packages copied on that PC. The Oracle MICROS Workstations are shipped with a pre-installed CAL-Client that establishes a connection to the CAL-Server. In case the CAL-Server holds newer CAL-Packages than installed on the workstation, the newer packages are transferred to the workstation and will be installed automatically.

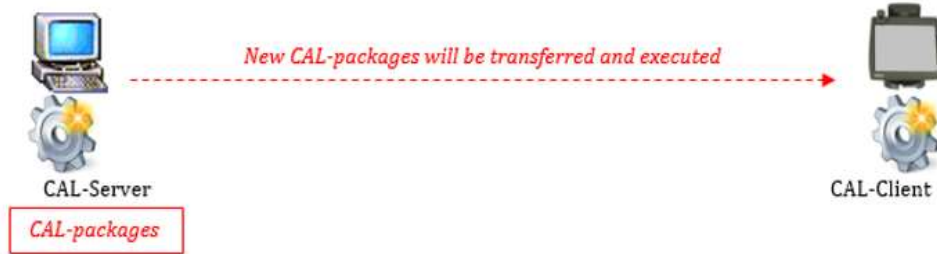


Figure 2 – CAL-Server Installation

The following sections provide instructions on how to install/upgrade the e7 software by using either the CAL-Standalone or CAL-Server approach.

Important Notes – Please Read

Before you start upgrading an existing e7 system, it is strongly recommended to perform the following steps:

1. Close all open checks.
2. Backup the Database and copy to a save location.
3. Close the e7 application.

Upgrading from version 3.x to 4.x requires that you first upgrade to version 4.0.0 before you upgrade to a higher version.

Table 3 – Upgrade From Version To Version Conversion

Upgrade to version ↓	Upgrade from Version								
	3.0.3	3.1.0	3.2.0	3.2.1	3.3.1	4.0.0	4.0.1	4.0.3	4.1.0
3.1.0	✓	✗	✗	✗	✗	✗	✗	✗	✗
3.2.0	✓	✓	✗	✗	✗	✗	✗	✗	✗
3.2.1	✓	✓	✓	✗	✗	✗	✗	✗	✗
3.3.1	✓	✓	✓	✓	✗	✗	✗	✗	✗
4.0.0	✓	✓	✓	✓	✓	✗	✗	✗	✗
4.0.1	✗	✗	✗	✗	✗	✓	✗	✗	✗
4.0.3	✗	✗	✗	✗	✗	✓	✓	✗	✗
4.1.0	✗	✗	✗	✗	✗	✓	✓	✓	✗
4.2.0	✗	✗	✗	✗	✗	✓	✓	✓	✓

Sensitive Data: Please be aware that e7 writes data in plain text to the database, except for all passwords that are written to the DB as hash strings. Please keep this in mind when

installing v4.x.EU, especially when using the Customer Management module that holds personal data in the database as plain text.

Back-Office PC: e7 supports only one network card. Please ensure that your PC has only one network card enabled.

MICROS Tablet R-Series: Depending on hardware configuration, the MICROS Tablet may be equipped with a wireless network card. Before starting the e7 installation, please decide on one network connection to use and disable the other network card.

Please also keep in mind that e7 requires the Tablet to be plugged into the Base Station continuously. Mobile operation is not supported.

Back-Office PC Software

Prerequisites

When installing e7 on a Back-Office PC running Microsoft Windows 8 or higher, you must activate Microsoft's .NET Framework 3.5.

To activate Microsoft .NET Framework 3.5:

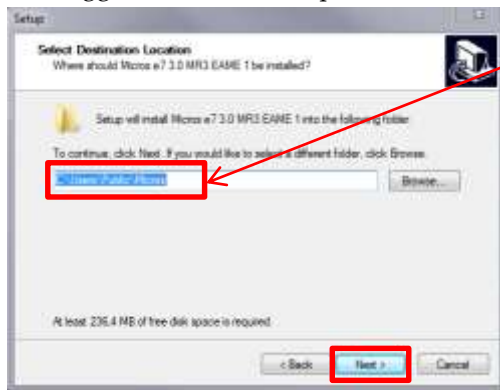
1. Ensure you have an Internet connection.
2. Open the Control Panel, select **Programs and Features**, and then select **Turn Windows features on or off**.
3. Activate the **.NET Framework 3.5 (includes .NET2.0 and 3.0)** feature.
4. Copy the **Oracle Hospitality e7 Point-of-Sale Version a.b.c.EU.zip** file onto your e7 PC (where a.b.c represents a wildcard for the version number: a=main version, b=minor version, c=Revision. E.g., Oracle Hospitality e7 Point-of-Sale Version 4.1.0.EU.zip).
5. Extract the zip-file to a temporary folder on your PC.

e7 Software Installation

1. Browse to the folder where the files have been extracted in the previous section. Open the folder: `...\Oracle Hospitality e7 Point-of-Sale Version a.b.c.EU\Back-Office-PC_Installation`
2. Run the **e7setup_a.b.c.EU.exe** on your Back-Office PC.
3. Click **Next**, accept the license agreement, and then click **Next**.



4. Select the installation folder, and then click **Next**. It is recommended to keep the suggested installation path.



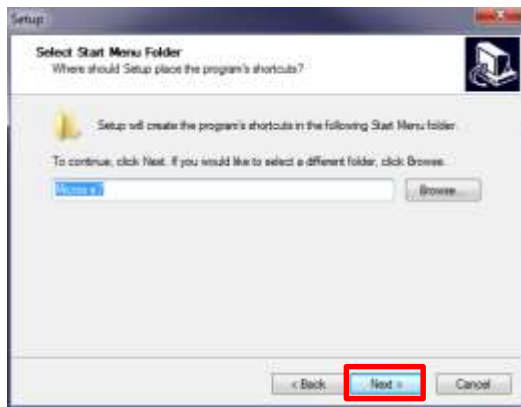
Recommended installation folder:

XP Professional / Server 2003
C:\Program Files\MICROS

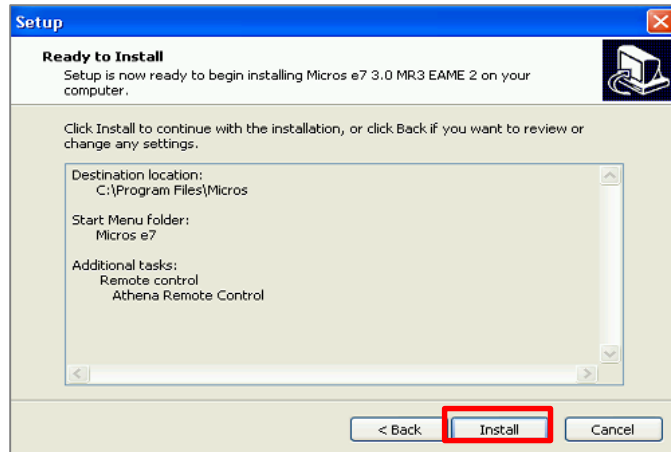
Microsoft Windows Vista Business Edition
C:\Users\{Administrator_Account_Name}\Micros
Note: Where the Administrator_Account_Name" will be the user that will be logged in all the time.

Microsoft Windows 7/8/8.1/10 Pro
C:\Users\Public\Micros

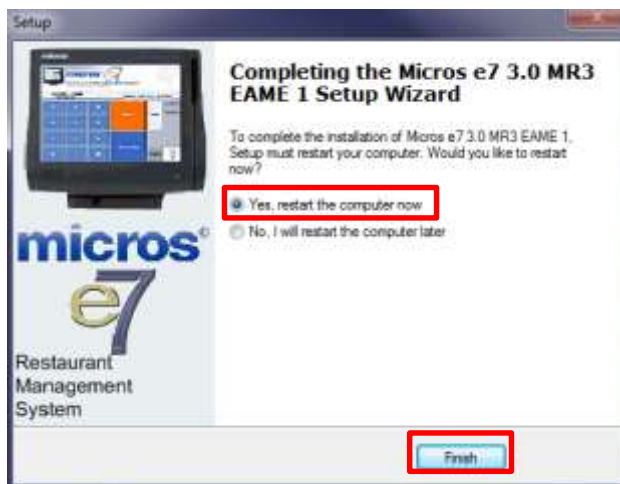
5. Click **Next**.



6. Review the installation settings, and then click **Install**.



7. Select **Yes, restart the computer now**, and then **Finish**.



8. In case of an upgrade the installation is completed at this point. The workstations will be update automatically.

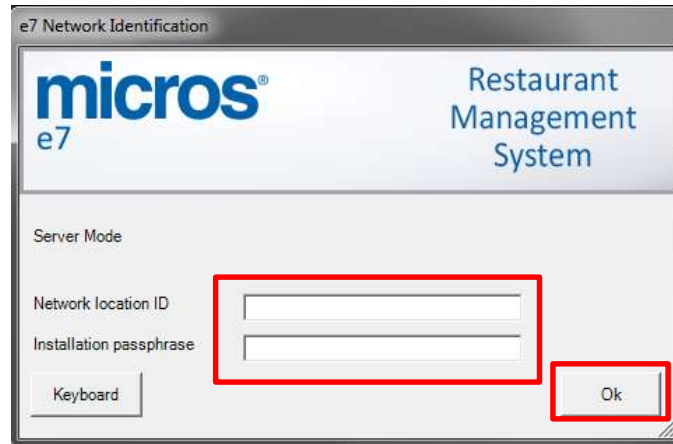
In case of an initial installation or update to version 4.2. EU, please continue with the next steps.

9. After restarting, the e7 Network Identification screen opens. Enter the following:
 - **Network Location ID** (initial installation only): The Location ID can be any string and is commonly the name of the restaurant. The Location ID must be spelled exactly the same on all workstations and the PC and is case-sensitive.
 - **Installation Passphrase**: The Installation Passphrase is required to create an internal encryption key to encrypt the network communication and stored passwords. The Installation Passphrase must be spelled exactly the same on all workstations and the PC. If the Location ID and the Installation Passphrase does not match on a workstation (or PC), then the workstations will not be able to communicate.

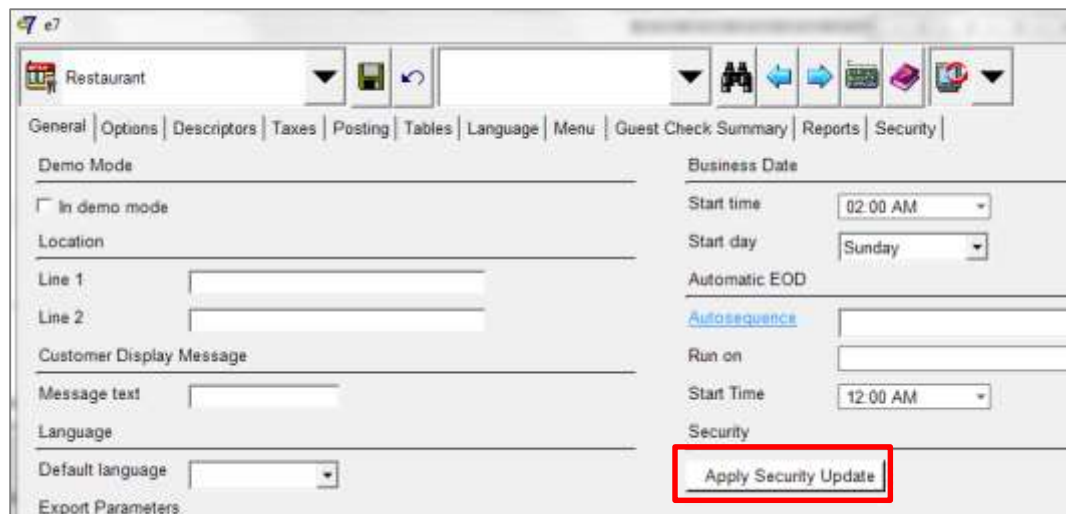
Furthermore the Installation Passphrase has to comply with the following rules:

- Must be more than 8 characters.

- Must be alphanumeric (letters and numbers).



10. The e7 application automatically starts. Click **OK** to confirm the security update message.
11. Click **OK** to confirm the security update instructions message.
12. Click the **Apply Security Update** button.



13. Click **Yes** to acknowledge the additional security message.
14. After the security update has completed, the Apply Security Update button is disabled. The e7 Back-Office PC software installation is now completed.
15. For new installations, you can now restore a database. See [Backup and Restore a Database](#) for instructions.

CAL-Server Installation: Workstation 4LX / 5 / 5A (WinCE)

Prerequisites

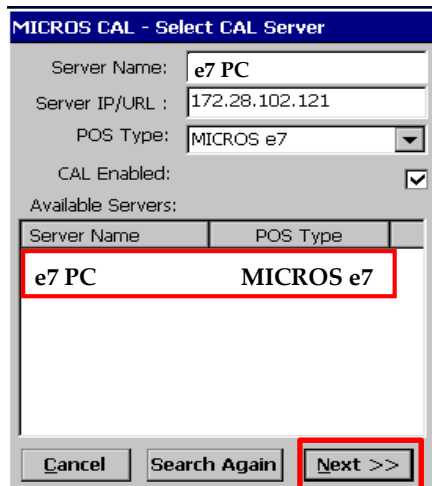
None.

Client Application Loader (CAL) Setup

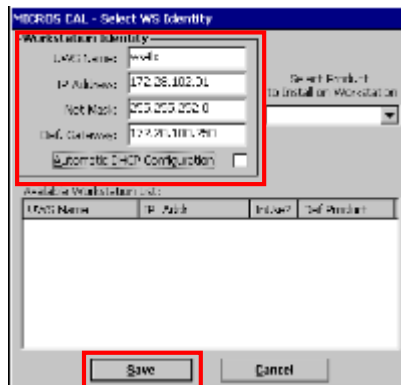
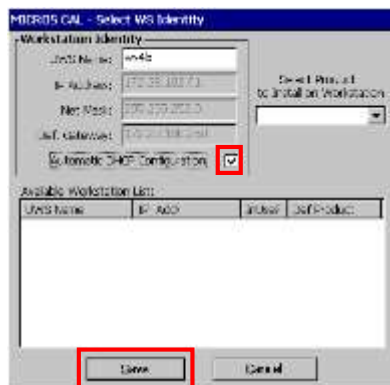
In case of an update, the workstations will be updated automatically. Proceed to [e7 Software Installation for Workstation 4LX / 5 / 5A \(WinCE\)](#).

The following steps are only required for an initial installation.

1. On the workstation start the CAL-Client:
 - a. Reboot the workstation so the CAL starts automatically.
 - b. Ensure the workstation is connected to the network.
 - c. Select **Start, Programs, CAL**, and then click **Reconfigure CAL**.
2. The CAL-Client scans the network to find a CAL-Server. Please standby.
3. On the Select CAL Server screen, select your PC by clicking on the entry, and then click **Next**.



4. Depending on your network configuration, **DHCP** or **Static IP**, set the parameter accordingly:
 - For DHCP, select **Automatic DHCP Configuration**, and then click **Save**.
 - For Static IP, deselect **Automatic DHCP Configuration**, enter the **IP Address**, **Net Mask**, and **Default Gateway**, and then click **Save**.



5. The CAL will automatically update the workstation with the recent software.

e7 Software Installation for Workstation 4LX / 5 / 5A (WinCE)

The following steps have to be completed for an initial installation and an update to version 4.2.0.EU.

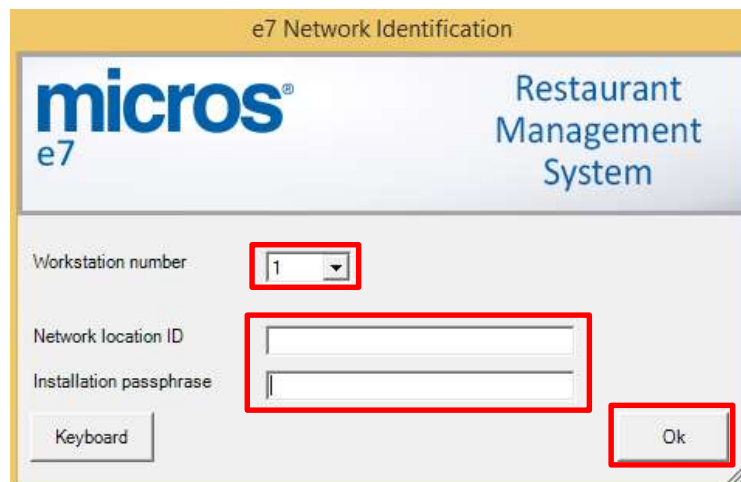
1. After the initial installation or update to version 4.2.0.EU, the e7 Network Identification screen opens. Enter the following:
 - **Workstation number** (initial installation only): Insert an appropriate workstation number from 1 to 6. Each number can only be used once.
 - **Network location ID** (initial installation only): The Location ID can be any string and is commonly the name of the restaurant. The Location ID must be spelled exactly the same on all workstations and the PC and is case-sensitive.
 - **Installation Passphrase**: The Installation Passphrase is required to create an internal encryption key to encrypt the network communication and stored passwords. The Installation Passphrase must be spelled exactly the same on all workstations and the PC.

Furthermore, the Installation Passphrase has to comply with the following rules:

- Must be more than 8 characters.
- Must be alphanumeric (letters and numbers).

If the Location ID and the Installation Passphrase do not match on a workstation (or PC), then the workstations will not be able to communicate!

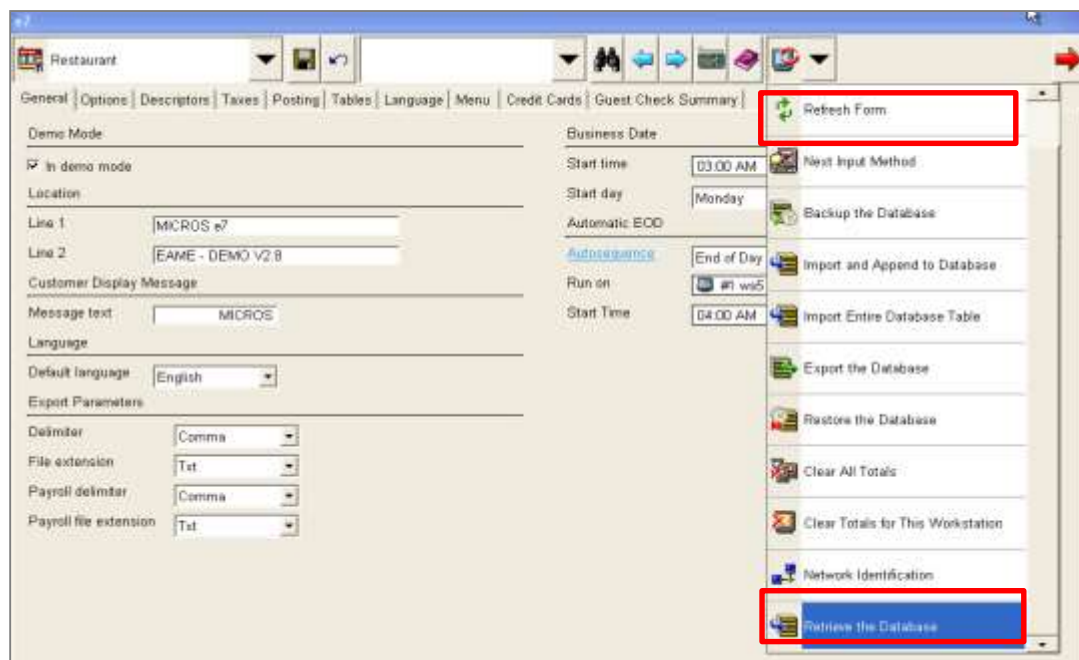
2. Click **OK**, and then **OK** again.



3. The e7 application will start automatically with an empty database. Click **OK** to confirm the security update.
4. Read the instructions for applying the security update, and then click **OK**.

Note: If the **Apply Security Update** has already been done at any other node in the system, do not run the security update again. It is only required once at one device in the e7 system. Most often, this has been done on the Back-Office PC.

5. For initial installation only: To retrieve the database from the PC, click the right drop-down box, and then click **Retrieve the Database**.



6. Click **Refresh Form**. The installation is now completed.

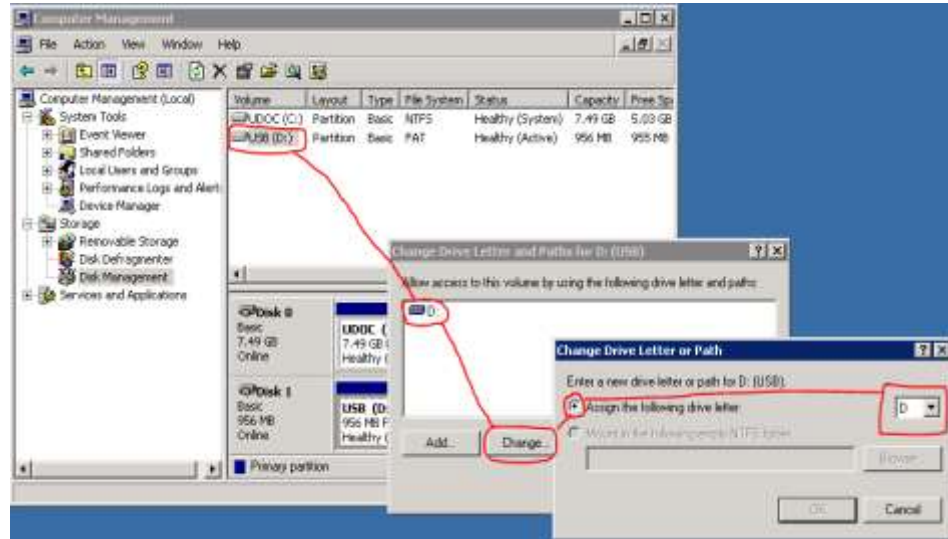
CAL-Server Installation: Workstation 5A / 6 (Win32)

Prerequisites

The following steps are only required for an initial installation. For an update, proceed to [e7 Software Installation for Workstation 5A / 6 \(Win32\)](#).

1. Connect an USB keyboard and turn on the workstation.
2. Starting the workstation for the first time will automatically start the Windows XP Professional Setup wizard that guides you through the setup procedure.
3. If you intend to use the USB thumb drive for database and journal backups, it is mandatory to assign the drive letter "D" to the USB thumb drive.
 - Open Disk Management.
 - **WS5A-POSReady2009:** On the Microsoft Windows Desktop, right-click on **My Computer**, and then click **Manage**. The Computer Management window opens. Click **Disk Management**.
 - **WS6-Windows Embedded 8.1:** Open the **Search** field. Type 'Create and Format Hard Disk Partitions' and execute.

- Right-click on the USB thumb drive intended to use for backups, and then select **Change Drive Letter and Path**.
- Click **Change**, select **Assign the following drive letter**, and then select **D**.
- Click **OK** to save the changes.



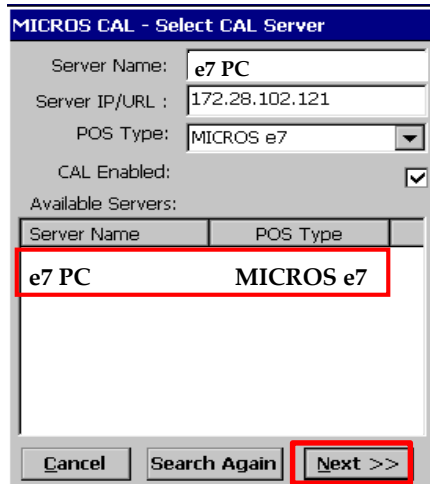
Client Application Loader (CAL) Setup

In case of an update, the workstations will be updated automatically. Proceed to [e7 Software Installation for Workstation 5A / 6 \(Win32\)](#).

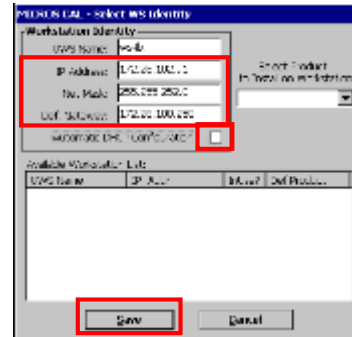
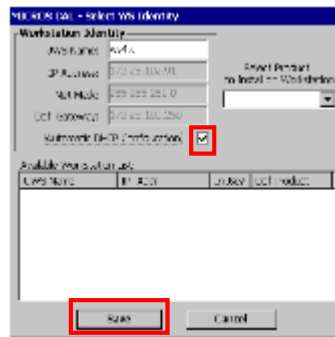
The following steps are only required for an initial installation.

1. Install the CAL application by executing the file 'setup.exe' located in
 - **WS5A-POSReady2009:** C:\B\Win32 CAL Client v101\...
 - **WS6-Windows Embedded 8.1:** C:\Bin\CALClient_129\...
2. Once the installation of the CAL application is completed, the workstation reboots and starts the CAL.

Note: If the network is not connected the "Network not connected – Please reconnect" message opens. Click **OK** to confirm and establish a network connection.
3. The CAL-Client scans the network to discover a CAL-Server. Please standby.
4. On the Select CAL Server screen, select your PC by clicking on the entry, and then click **Next**.



6. Depending on your network configuration, **DHCP** or **Static IP**, set the parameter accordingly:
 - For DHCP, select **Automatic DHCP Configuration**, and then click **Save**.
 - For Static IP, deselect **Automatic DHCP Configuration**, enter the **IP Address**, **Net Mask**, and **Default Gateway**, and then click **Save**.



7. The CAL will automatically update the workstation with the recent software.

e7 Software Installation for Workstation 5A / 6 (Win32)

The following steps have to be completed for an initial installation and an update to version 4.2.0.EU.

1. After the initial installation or update to version 4.2.0.EU, the e7 Network Identification screen opens. Enter the following:
 - **Workstation number** (initial installation only): Insert an appropriate workstation number from 1 to 6. Each number can only be used once.
 - **Network location ID** (initial installation only): The Location ID can be any string and is commonly the name of the restaurant. The Location ID must be spelled exactly the same on all workstations and the PC and is case-sensitive.

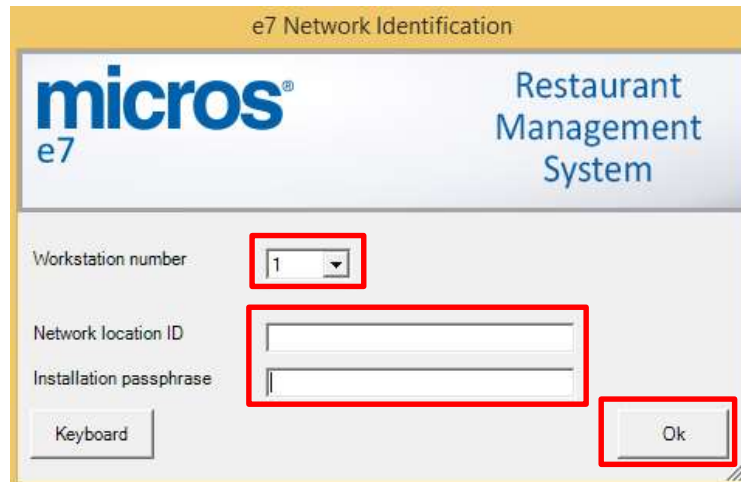
- **Installation Passphrase:** The Installation Passphrase is required to create an internal encryption key to encrypt the network communication and stored passwords. The Installation Passphrase must be spelled exactly the same on all workstations and the PC.

Furthermore, the Installation Passphrase has to comply with the following rules:

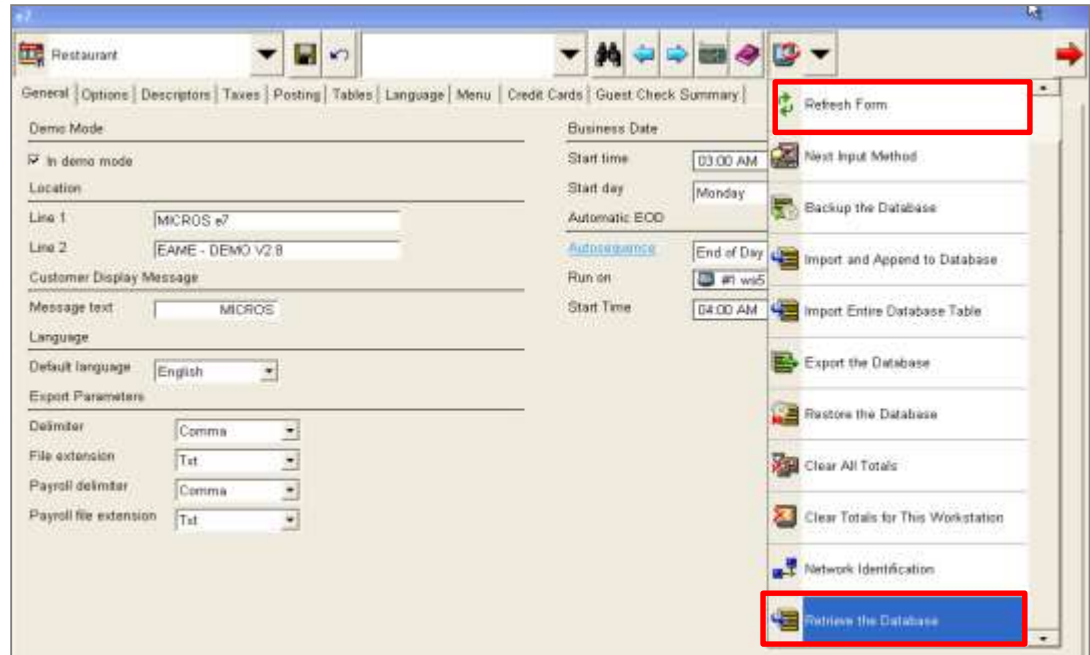
- Must be more than 8 characters.
- Must be alphanumeric (letters and numbers).

If the Location ID and the Installation Passphrase do not match on a workstation (or PC), then the workstations will not be able to communicate!

2. Click **OK**, and then **OK** again.



7. The e7 application will start automatically with an empty database. Click **OK** to confirm the security update.
8. Read the instructions for applying the security update, and then click **OK**.
Note: If the **Apply Security Update** has already been done at any other node in the system, do not run the security update again. It is only required once at one device in the e7 system. Most often, this has been done on the Back-Office PC.
9. For initial installation only: To retrieve the database from the PC, click the right drop-down box, and then click **Retrieve the Database**.



10. Click **Refresh Form**. The installation is now completed.

Mobile Device Installation: DT430SC / MC40

A CAL-Server Installation procedure is not available. To install the mobile device software, refer to the [Standalone Installation](#) section.

Standalone Installation

Workstation 4LX / 5 / 5A / and mTablet R-Series (Microsoft Windows CE)

Prerequisites

1. Copy the **Oracle Hospitality e7 Point-of-Sale Version a.b.c.EU.zip** on your e7 PC where a.b.c represents a wildcard for the version number (a=main version, b=minor version, c=revision), i.e. "Oracle Hospitality e7 Point-of-Sale Version 4.1.0.EU.zip". Extract the zip-file to a temporary folder on your PC.
2. Browse to the folder where the files have been extracted in the previous step. Open the ...\Oracle Hospitality e7 Point-of-Sale Version a.b.c.EU\Standalone Installation\ folder and you will find the following folders:
 - \MC40
 - \mTablet-R-Series
 - \WebDT430
 - \WS4LX
 - \WS5
 - \WS_Win32

- \WS5A-CE

3. Copy the relevant folder to the USB stick.

4. Insert the USB stick to the USB port as indicated below (red framed):

WS4LX

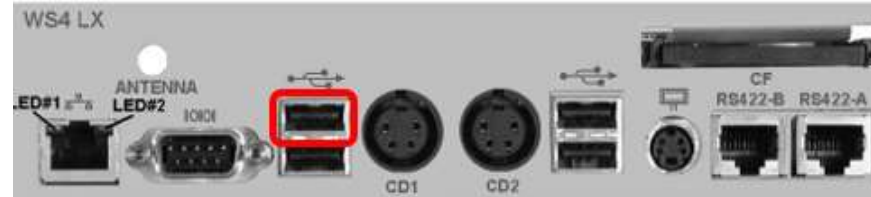


Figure 3 – WS4LX I/O Panel

WS5



Figure 4 – WS5 I/O Panel

WS5A

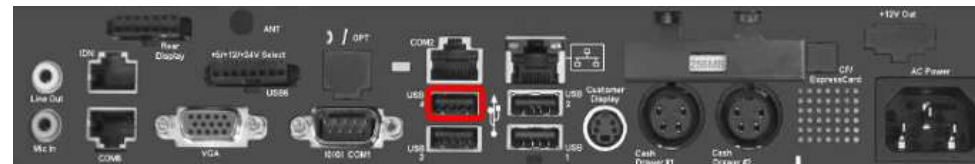


Figure 5 – WS5A I/O Panel

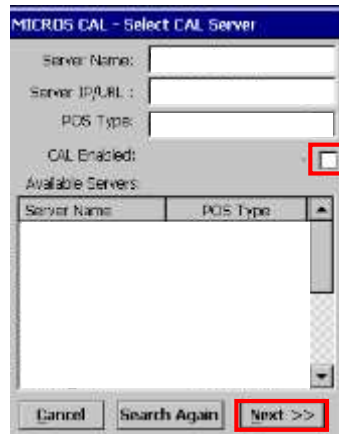
Base Station R-Series



Figure 6 – Base Station R-Series I/O Panel

e7 Software Installation for Workstation 4LX / 5 / 5A / mTablet R-Series (Microsoft Windows CE)

1. Turn on the workstation. If the e7 update starts, exit the e7 application.
2. If the CAL Client starts and scans the network, wait until completed, and then disable the CAL Client as follows.
3. The CAL-Client scans the network to find a CAL-Server. Please standby.
4. Uncheck **CAL Enabled**, and then click **Next**. The MICROS CAL window closes.



5. Open Microsoft Windows Explorer on the Workstation by clicking on the **My Device** icon or by selecting **Start, Programs, and Windows Explorer**.
6. The USB thumb drive will appear in the Explorer as USBDISK or Hard Disk. Double click the drive.
7. Install the **PLATFORM Update**:
 - a. Depending on your type of workstation, open the **mTablet-R-Series, WS5A, WS5, or WS4LX** folder.
 - b. Open the **1_EngPlatform** folder and run **StandAloneInstall.exe**.
 - c. The workstation will reboot once the installation is completed. If the folder is empty, proceed with the next step.
8. Install the **CAL Update**:
 - a. Depending on your type of workstation, open the **mTablet-R-Series, WS5A, WS5, or WS4LX** folder.
 - b. Open the **2_McrsCAL** folder and run **StandAloneInstall.exe**.
 - c. The workstation will reboot once the installation is completed. If the folder is empty, proceed with the next step.
9. Install the **BIOS Update**:
 - a. Depending on your type of workstation, open the **mTablet-R-Series, WS5A, WS5, or WS4LX** folder.
 - b. Open the **3_Bios** folder and run **StandAloneInstall.exe**.
 - c. After the installation the workstation will reboot. The workstation will reboot once the installation is completed. If the folder is empty, proceed with the next step.
10. Install the **e7 Software**:
 - a. Depending on your type of workstation, open the **mTablet-R-Series, WS5A, WS5, or WS4LX** folder.

- b. Open the **4_e7** folder and run **StandAloneInstall.exe**.
- c. The workstation will reboot once the installation is completed.

Note: When installing e7 on an mTablet, set the display to landscape orientation during the installation process.

Note: When the version to install is equal or below the version currently installed on the workstation, a blue screen appears for a short moment and the installation process will be stopped. In this case, continue to the next step.

The following steps have to be completed for an initial installation and an update to version 4.2.0.EU.

1. After the initial installation or update to version 4.2.0.EU, the e7 Network Identification screen opens. Enter the following:
 - **Workstation number** (initial installation only): Insert an appropriate workstation number from 1 to 6. Each number can only be used once.
 - **Network location ID** (initial installation only): The Location ID can be any string and is commonly the name of the restaurant. The Location ID must be spelled exactly the same on all workstations and the PC and is case-sensitive.
 - **Installation Passphrase:** The Installation Passphrase is required to create an internal encryption key to encrypt the network communication and stored passwords. The Installation Passphrase must be spelled exactly the same on all workstations and the PC.

Furthermore, the Installation Passphrase has to comply with the following rules:

- Must be more than 8 characters.
- Must be alphanumeric (letters and numbers).

If the Location ID and the Installation Passphrase do not match on a workstation (or PC), then the workstations will not be able to communicate!

2. Click **OK**, and then **OK** again.

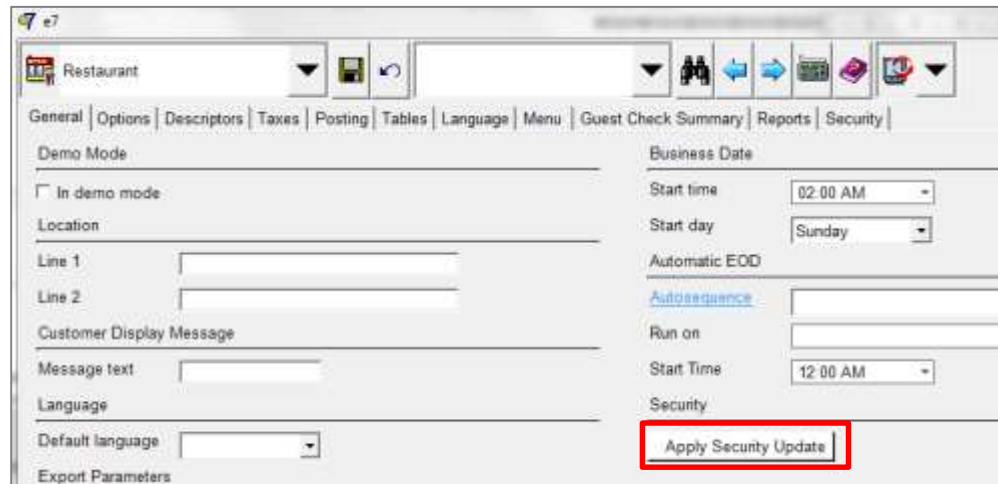
The screenshot shows the 'e7 Network Identification' dialog box. It features a yellow title bar and a grey header area with the 'micros e7' logo and 'Restaurant Management System' text. The main content area has three input fields: 'Workstation number' (a dropdown menu with '1' selected), 'Network location ID' (a text box), and 'Installation passphrase' (a text box). At the bottom, there are 'Keyboard' and 'Ok' buttons. Red boxes highlight the '1' in the dropdown, the 'Network location ID' and 'Installation passphrase' text boxes, and the 'Ok' button.

3. The e7 application will start automatically with an empty database. Click **OK** to confirm the security update.

4. Read the instructions for applying the security update, and then click **OK**.

Note: If the **Apply Security Update** has already been done at any other node in the system, do not run the security update again. It is only required once at one device in the e7 system. Most often, this has been done on the Back-Office PC.

5. If the **Apply Security Update** has not been run at any other node in the e7 system, click the **Apply Security Update** button.

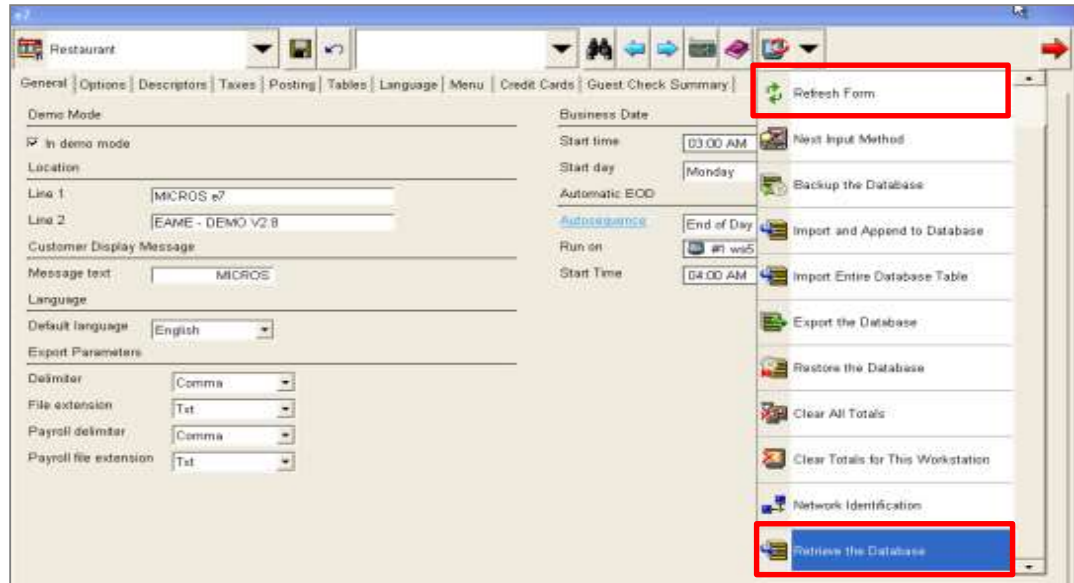


6. Click **Yes** to confirm the security update and continue.

7. Once the security update is complete, the Apply Security Update button is disabled/grayed out.

8. If the previously installed workstation is the first one in the e7 system, refer to the [Backup and Restore a Database](#) section for instructions. Otherwise, continue to the next step.

9. To retrieve the database from another device, click on the right drop-down box, and then select **Retrieve the Database**.



10. Click **Refresh Form**. The installation is now completed.

Workstation 5A / 6 (Win32)

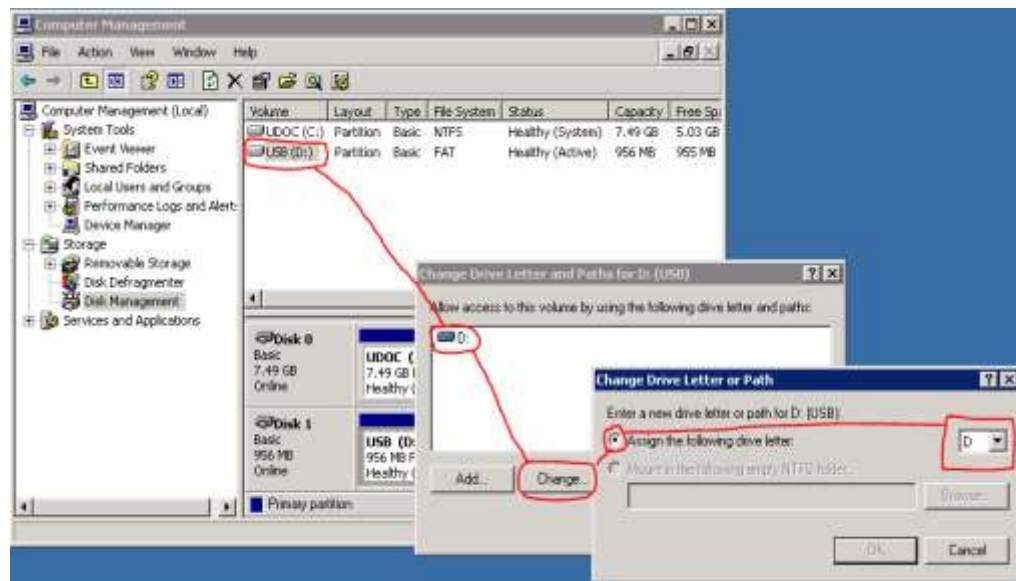
Prerequisites

1. Copy the **Oracle Hospitality e7 Point-of-Sale Version a.b.c.EU.zip** on your e7 PC where a.b.c represents a wildcard for the version number (a=main version, b=minor version, c=revision), i.e. "Oracle Hospitality e7 Point-of-Sale Version 4.1.0.EU.zip". Extract the zip-file to a temporary folder on your PC.
2. Browse to the folder where the files have been extracted in the previous step. Open the `..\Oracle Hospitality e7 Point-of-Sale Version a.b.c.EU\Standalone Installation\` folder and you will find the following folders:
 - \MC40
 - \mTablet-R-Series
 - \WebDT430
 - \WS4LX
 - \WS5
 - \WS_Win32
 - \WS5A-CE
3. Open the `\WS_Win32` folder and copy the `WS_Win32_e7_setup_a.b.c.EU.exe` file to an USB stick.

The following steps are required for an initial installation. For an upgrade, proceed to the next section.

1. Connect an USB keyboard and turn on the workstation.

2. Starting the workstation for the first time will automatically start the Windows XP Professional Setup wizard that guides you through the setup procedure.
3. Setup the Network (TCP/IP) according to your network.
4. If you intend to use the USB thumb drive for database and journal backups, it is mandatory to assign the drive letter "D" to the USB thumb drive.
 - Open Disk Management.
 - **WS5A-POSReady2009:** On the Microsoft Windows Desktop, right-click on **My Computer**, and then click **Manage**. The Computer Management window opens. Click **Disk Management**.
 - **WS6-Windows Embedded 8.1:** Open the **Search** field. Type in 'Create and Format Hard Disk Partitions' and execute.
 - Right-click on the USB thumb drive intended to use for backups, and then select **Change Drive Letter and Path**.
 - Click **Change**, select **Assign the following drive letter**, and then select **D**.
 - Click **OK** to save the changes.

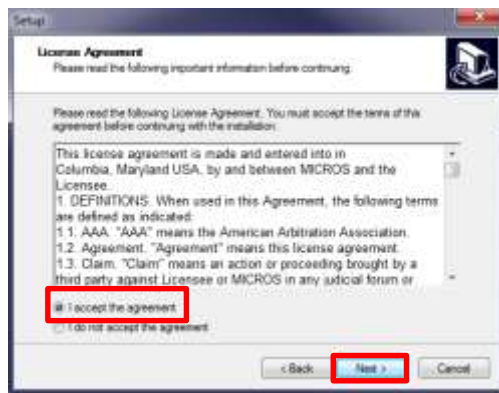


e7 Software Installation for Workstation 5A / 6 (Win32)

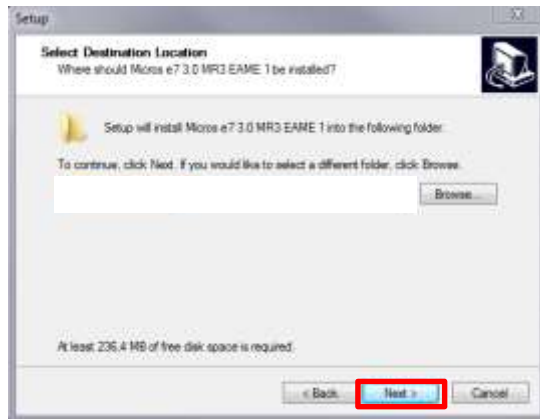
1. Insert the USB stick and execute the **WS_Win32_e7_setup_a.b.c.EU.exe** file.
2. The Welcome screen opens. Click **Next** to continue.



3. Accept the license agreement, and then click Next.



4. Use the default installation path, and then click Next.

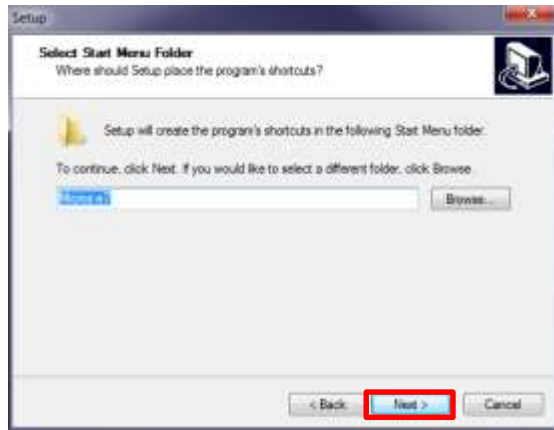


Recommended installation folder:

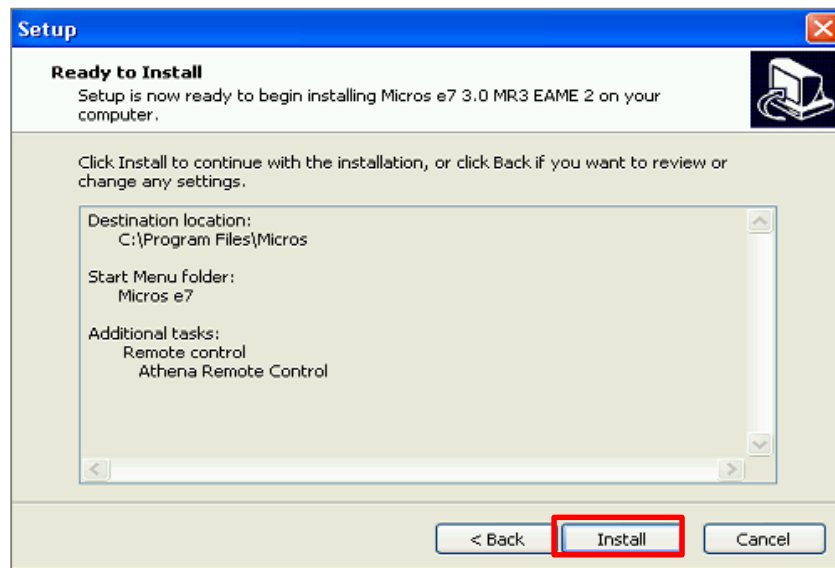
WS5A-POSReady2009:
C:\Program Files\MICROS

WS6-Windows Embedded 8.1:
C:\Users\Public\Micros

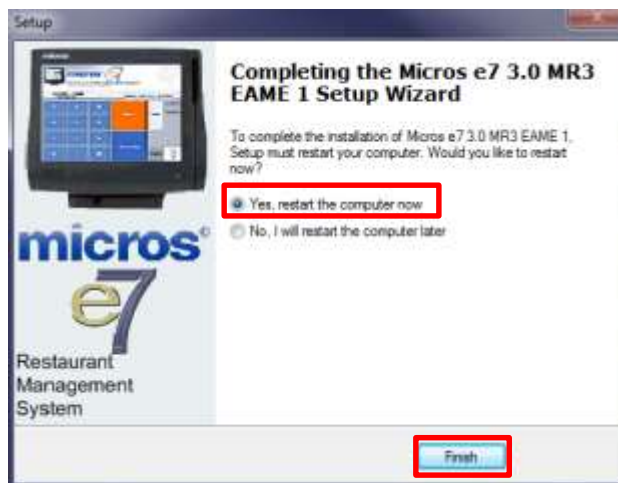
5. Click Next.



6. Review the installation settings, and then click **Install**.



7. To complete the installation, select **Yes, restart the computer now**, and then click **Finish**.



In case of an upgrade, the installation is completed at this point.

In case of an initial installation or update to version 4.2.0.EU, continue with the next steps.

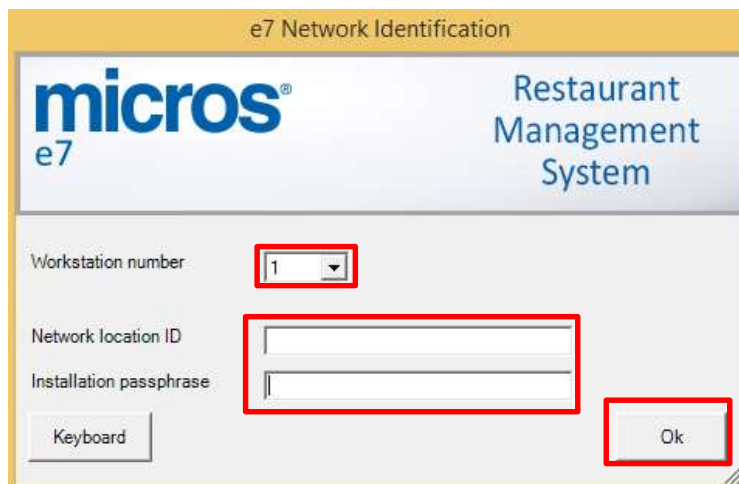
1. After the initial installation or update to version 4.2.0.EU, the e7 Network Identification screen opens. Enter the following:
 - **Workstation number** (initial installation only): Insert an appropriate workstation number from 1 to 6. Each number can only be used once.
 - **Network location ID** (initial installation only): The Location ID can be any string and is commonly the name of the restaurant. The Location ID must be spelled exactly the same on all workstations and the PC and is case-sensitive.
 - **Installation Passphrase**: The Installation Passphrase is required to create an internal encryption key to encrypt the network communication and stored passwords. The Installation Passphrase must be spelled exactly the same on all workstations and the PC.

Furthermore, the Installation Passphrase has to comply with the following rules:

- Must be more than 8 characters.
- Must be alphanumeric (letters and numbers).

If the Location ID and the Installation Passphrase do not match on a workstation (or PC), then the workstations will not be able to communicate!

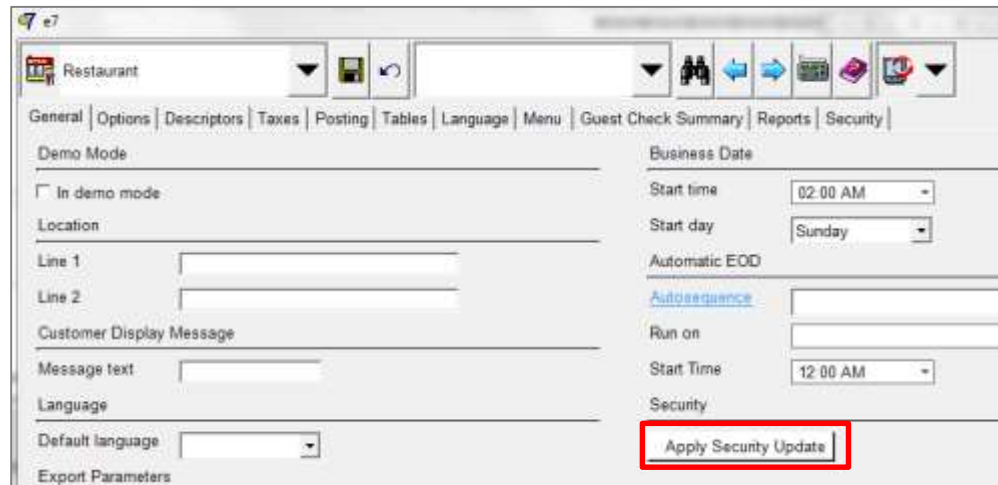
2. Click **OK**, and then **OK** again.



3. The e7 application will start automatically with an empty database. Click **OK** to confirm the security update.
4. Read the instructions for applying the security update, and then click **OK**.

Note: If the **Apply Security Update** has already been done at any other node in the system, do not run the security update again. It is only required once at one device in the e7 system. Most often, this has been done on the Back-Office PC.

5. If the **Apply Security Update** has not been run at any other node in the e7 system, click the **Apply Security Update** button.



6. Click **Yes** to confirm the security update and continue.
7. Once the security update is complete, the Apply Security Update button is disabled/grayed out.
8. If the previously installed workstation is the first one in the e7 system, refer to the [Backup and Restore a Database](#) section for instructions. Otherwise, continue to the next step.
9. To retrieve the database from another device, click on the right drop-down box, and then select **Retrieve the Database**.



10. Click **Refresh Form**. The installation is now completed.

Mobile Device Installation

DT430SC

Prerequisites

To run a Mobile device in an e7 system, at least one workstation or a Back-Office PC must be running the e7 application.

1. Copy the **Oracle Hospitality e7 Point-of-Sale Version a.b.c.EU.zip** on your e7 PC where a.b.c represents a wildcard for the version number (a=main version, b=minor version, c=Revision), i.e. "Oracle Hospitality e7 Point-of-Sale Version 4.1.0.EUA.zip".
2. Extract the zip-file to a temporary folder on your PC.
3. Browse to the folder where the files have been extracted in the previous step. Open the ...**Oracle Hospitality e7 Point-of-Sale Version a.b.c.EU\Standalone Installation** folder and copy the **WEBDT430** folder to an USB stick.
4. If not already done, connect the DT430 to the Wireless Network
5. Insert the USB stick to the USB port indicated below



e7 Standalone Installation for DT430SC

On the DT430SC, browse to the USB stick and open the ...**WEBDT430** folder. Copy the entire **micros** folder to the **ResidentFlash** folder on the DT430SC.

To create a desktop shortcut for the e7 application:

- On the DT430, browse to ...**micros\e7** and select the **e7.exe** file.
- Select **File, Send To,** and then **Desktop as Shortcut.**
- Return to the Desktop.

The following steps have to be completed for an initial installation and an update to version 4.2.0.EU.

1. After the initial installation or update to version 4.2.0.EU, the e7 Network Identification screen opens. Enter the following:
 - **Workstation number** (initial installation only): Insert an appropriate workstation number from 1 to 6. Each number can only be used once.
 - **Network location ID** (initial installation only): The Location ID can be any string and is commonly the name of the restaurant. The Location ID must be spelled exactly the same on all workstations and the PC and is case-sensitive.

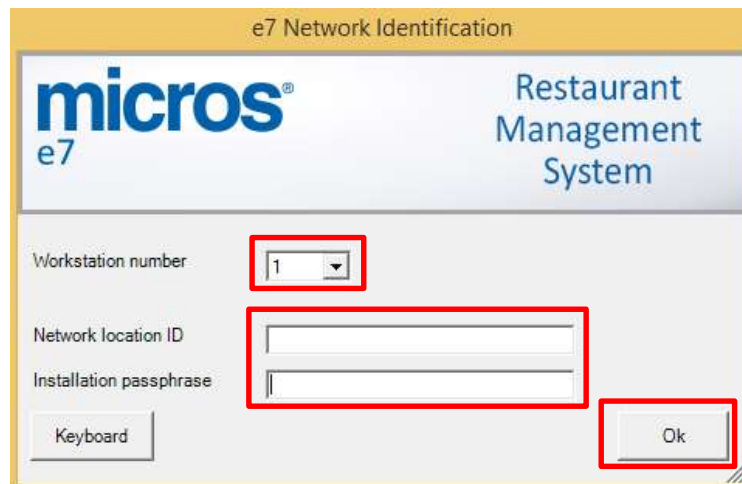
- **Installation Passphrase:** The Installation Passphrase is required to create an internal encryption key to encrypt the network communication and stored passwords. The Installation Passphrase must be spelled exactly the same on all workstations and the PC.

Furthermore, the Installation Passphrase has to comply with the following rules:

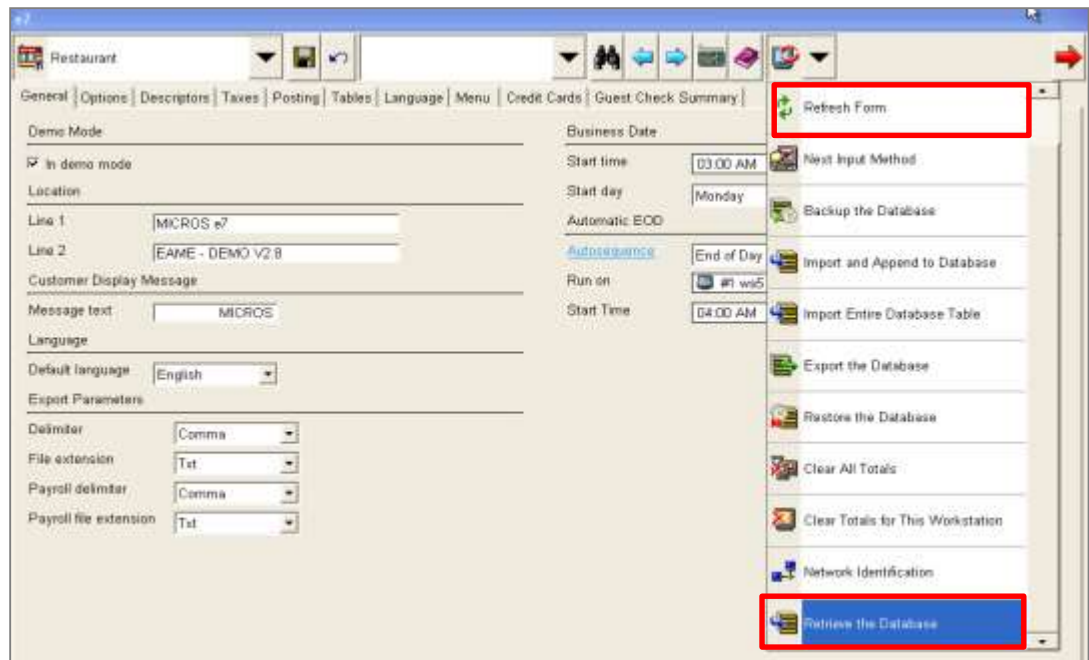
- Must be more than 8 characters.
- Must be alphanumeric (letters and numbers).

If the Location ID and the Installation Passphrase do not match on a workstation (or PC), then the workstations will not be able to communicate!

2. Click **OK**, and then **OK** again.



11. The e7 application will start automatically with an empty database. Click **OK** to confirm the security update.
12. Read the instructions for applying the security update, and then click **OK**.
Note: If the **Apply Security Update** has already been done at any other node in the system, do not run the security update again. It is only required once at one device in the e7 system. Most often, this has been done on the Back-Office PC.
13. For initial installation only: To retrieve the database from the PC, click the right drop-down box, and then click **Retrieve the Database**.



14. Click **Refresh Form**. The installation is now completed.

MC40

Prerequisites

To run a Mobile Device in an e7 system, at least one workstation or a Back-Office PC must be running the e7 application.

1. Connect the MC40 to your PC.
2. If the Microsoft **Windows Mobile Device Center** is installed, it starts up and represents the MC40 as a disk drive named 'Compact'.

If it is not installed, setup the USB port on the MC40:

- a. Select **Start, Control Panel**, and then **USBConfig**.
 - b. Click the USB Port Mode tab, and then select **USB Client Mode**.
 - c. Click the USB Client Mode tab, activate **Mass Storage**, and then select **Application**.
 - d. Click **OK**.
 - e. Connect the MC40 to the USB port of your PC.
3. Copy the **Oracle Hospitality e7 Point-of-Sale Version a.b.c.EU.zip** on your e7 PC where a.b.c represents a wildcard for the version number (a=main version, b=minor version, c=Revision), i.e. "Oracle Hospitality e7 Point-of-Sale Version 4.1.0.EUA.zip".
 4. Extract the zip-file to a temporary folder on your PC.
 5. Browse to the folder where the files have been extracted in the previous step.

-
6. Open the ...\Oracle Hospitality e7 Point-of-Sale Version a.b.c.EU\Standalone Installation\ folder and copy the entire **MC40** folder to **Compact** (or **Local Disk**) on your PC.
 7. When completed, disconnect the MC40 from your PC.
 8. Connect the MC40 to the wireless network and setup the network parameters.

e7 Software Installation for the MC40

On the MC40, open the Application\MC40\4_e7\ folder and execute the **StandAloneInstall.exe** file.

Once the installation is complete, the device will reboot. Double-click the **e7** icon on the desktop to start the application.

The following steps have to be completed for an initial installation and an update to version 4.2.0.EU.

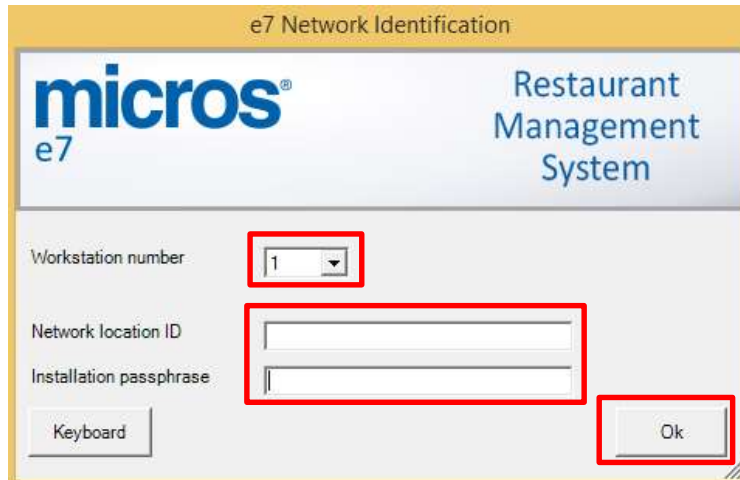
1. After the initial installation or update to version 4.2.0.EU, the e7 Network Identification screen opens. Enter the following:
 - **Workstation number** (initial installation only): Insert an appropriate workstation number from 1 to 6. Each number can only be used once.
 - **Network location ID** (initial installation only): The Location ID can be any string and is commonly the name of the restaurant. The Location ID must be spelled exactly the same on all workstations and the PC and is case-sensitive.
 - **Installation Passphrase**: The Installation Passphrase is required to create an internal encryption key to encrypt the network communication and stored passwords. The Installation Passphrase must be spelled exactly the same on all workstations and the PC.

Furthermore, the Installation Passphrase has to comply with the following rules:

- Must be more than 8 characters.
- Must be alphanumeric (letters and numbers).

If the Location ID and the Installation Passphrase do not match on a workstation (or PC), then the workstations will not be able to communicate!

2. Click **OK**, and then **OK** again.

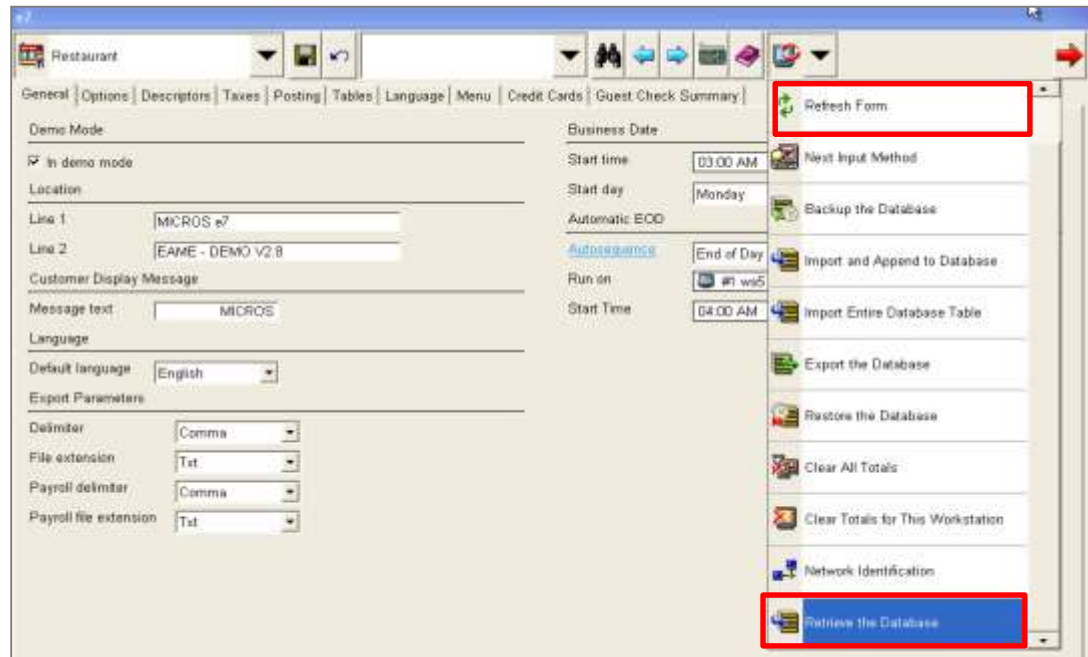


15. The e7 application will start automatically with an empty database. Click **OK** to confirm the security update.

16. Read the instructions for applying the security update, and then click **OK**.

Note: If the **Apply Security Update** has already been done at any other node in the system, do not run the security update again. It is only required once at one device in the e7 system. Most often, this has been done on the Back-Office PC.

17. For initial installation only: To retrieve the database from the PC, click the right drop-down box, and then click **Retrieve the Database**.



18. Click **Refresh Form**. The installation is now completed.

3 Backup and Restore a Database

Preliminary

The e7 database can be backed up to and restored from a compressed file. These are located in the ...\`MICROS\`e7\`\DbBackups` folder and must be named either “backup.001.gz” or “backup.002.gz”.

When backing up a database, e7 compresses all data from the ...\`\e7\db` folder into the “backup.001.gz” file and stores it in the ...\`MICROS\`e7\`\DbBackups` folder.

When “backup.001.gz” already exists, e7 stores the compressed data in the “backup.002.gz” file. If “backup.001.gz” and “backup.002.gz” already exist, then e7 compares the date and time of creation and overrides the older file.

When restoring a database, e7 checks the ...\`MICROS\`e7\`\DbBackups` folder for a file named “backup.001.gz” or “backup.002.gz”. If one of these files exists, then e7 restores the database from that file. If both files exist, e7 compares the time and date of creation and restores the most recent file.

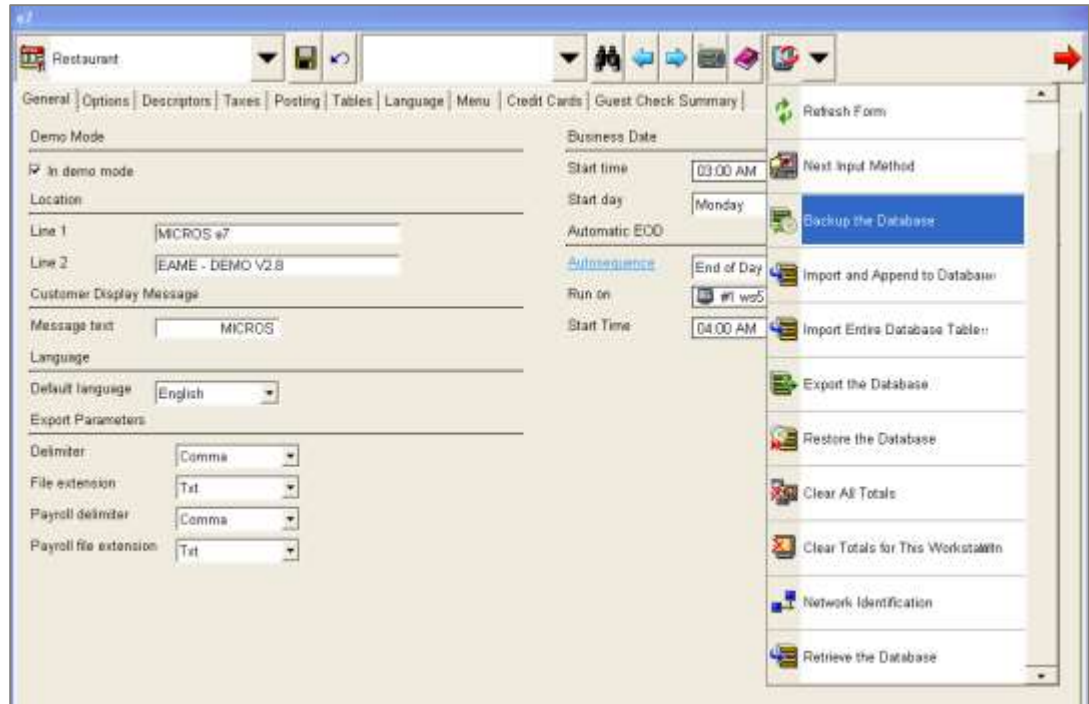
If you want to keep “backup.001.gz” or “backup.002.gz” without overriding it, then you must rename the file.

Note: You cannot backup a database taken from an e7 version higher than the one currently installed.

Backup the Database

The **Backup the Database** function copies the complete database including configuration data (definitions), historical report data, as well as open and closed checks to a compressed file.

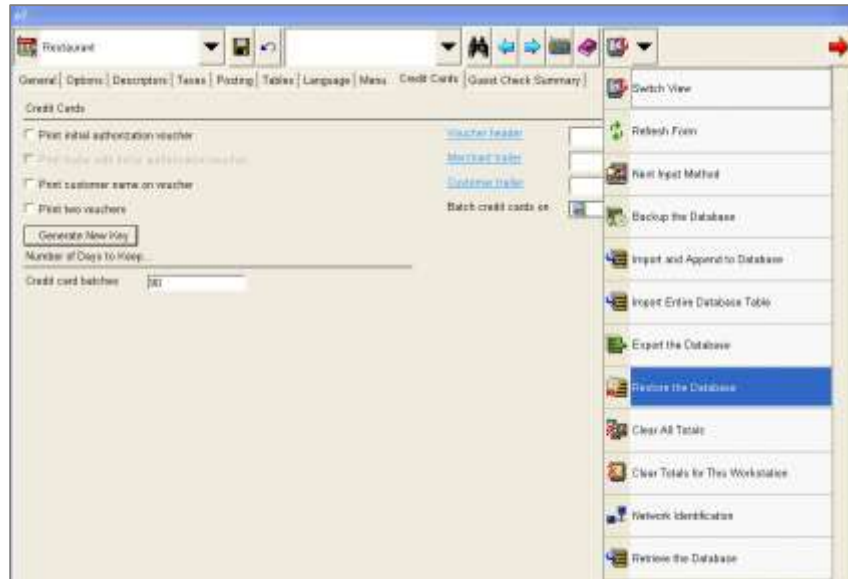
1. At a PC or Workstation, open the **Configurator Module**.
2. Click the drop-down box on the right, and then select **Backup the Database**.
3. The backup file is copied to ...\`MICROS\`e7\`\DbBackups`.



Restore the Database in Version 3.x

The **Restore the Database** function replaces the complete e7 database including configuration data (definitions), historical report data, as well as open and closed checks from a compressed file.

1. Start e7.
2. When e7 is started with an empty database, the Configurator Tool open with an error message. Click **OK** to confirm.
3. Copy the database file to `\\{installation path}\Micros\e7\DbBackups`.
4. Ensure the database is named either "backup.001.gz" or "backup.002.gz".
5. Open the **Configurator**, click the drop-down box on the right, and then select **Restore the Database**.



6. Click the drop-down box again, and then select **Refresh Form**.

Restore the Database in Version 4.x

The **Restore the Database** function replaces the complete e7 database including configuration data (definitions), historical report data, as well as open and closed checks from a compressed file.

Note: In version 4.0, e7's proprietary file based database has been replaced with a SQLite DB. As a result of this change, the **Restore** function in e7 has been amended to support SQLite databases only. Therefore, depending on the database version, two different approaches are used to restore a database in version 4.0

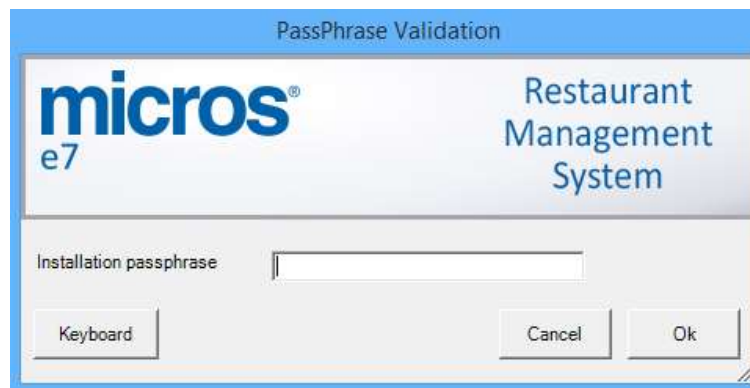
Restore a database taken from a version 3.x backup

1. Close the e7 application.
2. Go to ... \Micros\ e7\ db and delete the complete content of this folder.
3. Go to ... \Micros\ e7\ DbBackups and copy the "backup.00x.gz" file.
4. Restart the e7 application.
5. When e7 starts up, the v.3.x database will be restored automatically.

Restore a database from a version 4.x backup file

1. Start e7.
2. When e7 is started with an empty database, the Configurator Tool open with an error message. Click **OK** to confirm.

3. Copy the database file to `\{installation path}\Micros\e7\DbBackups`.
4. Ensure the database is named either "backup.001.gz" or "backup.002.gz".
5. Open the **Configurator**, click the drop-down box on the right, and then select **Restore the Database**.
6. Restoring a database in version 4.2.0.EU or higher may require the installation passphrase:
 - Restoring a database from a version below v4.2.0.EU does not require the installation passphrase.
 - To any database taken from version 4.2.0.EU or higher: if the source system and the target system possess an identical installation passphrase, then it's not required to enter the installation passphrase.
 - To any database taken from version 4.2.0.EU or higher: if the source system and the target system do not possess an identical installation passphrase, then you must enter the installation passphrase.
7. If applicable, click **OK** to confirm the passphrase validation process.
8. Enter the **Installation Passphrase**, and then click **OK**.



9. The database has been restored.
10. On all other workstation in the system, you must use the **Retrieve All Definitions** function from the device where the database definitions has been restored.

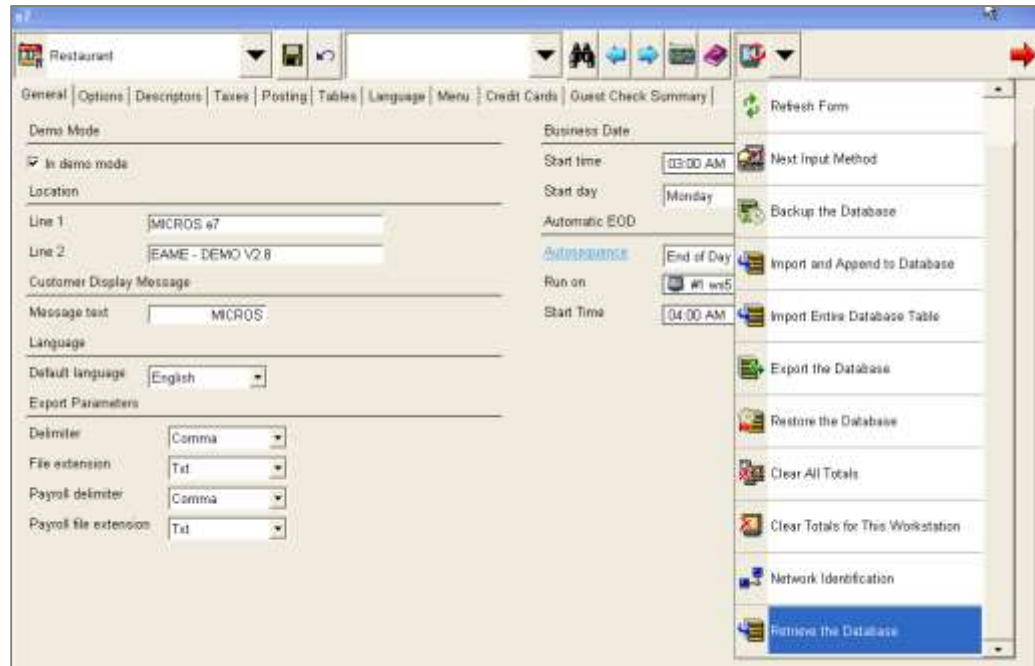
Retrieve the Database

The **Retrieve the Database** function retrieves the complete database from another e7 terminal in the system, including configuration data (definitions), historical report data, open and closed checks.

This procedure requires that at least one e7 device is installed and running a database. If so, all database definitions can be retrieved from another device on the network. This allows a new workstation to be brought online quickly by retrieving the definition information from another device.

To retrieve a database:

1. Open the Configurator, click the drop-down box on the right, and then select **Retrieve the Database**.
2. Click **Yes** to confirm.

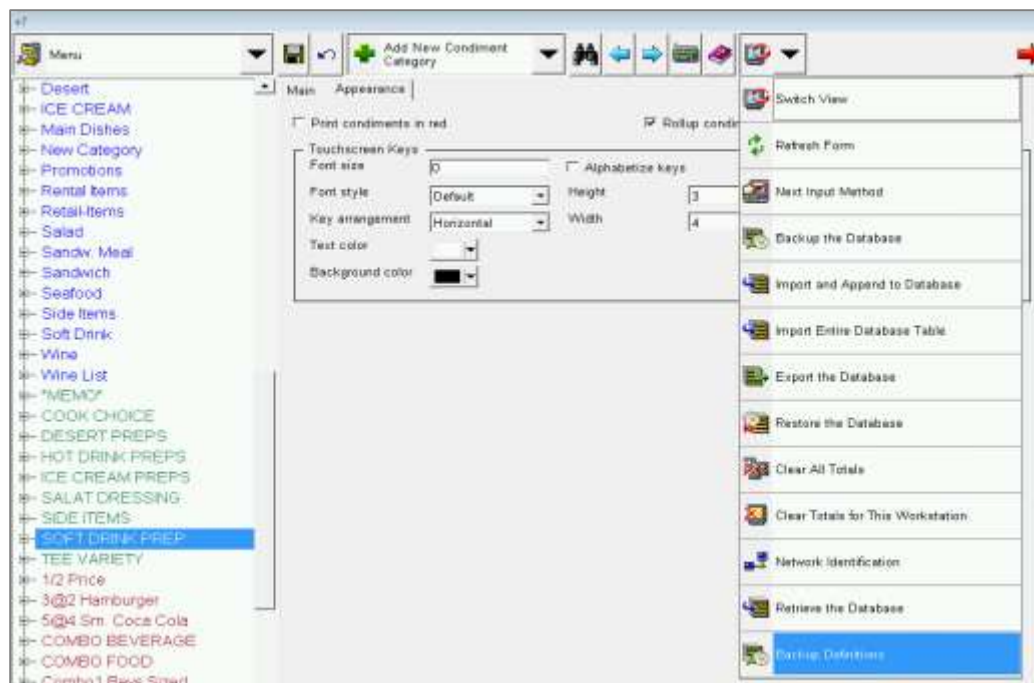


Backup Database Definitions

Database Definitions mean all configuration data such as menu items, touchscreen, discounts payments, etc. Database Definitions do not include revenue data such as historical report data or open and closed checks.

To backup Database Definitions:

1. At a PC or Workstation, open the **Configurator Module**.
2. Click the drop-down box on the right, and then select **Backup Definitions**.
3. A compressed backup file is copied to ...\Micros\#7\DbBackups and named 'Backup_def.001.gz' or 'Backup_def.002.gz'.



Restore Database Definitions

The **Restore Definitions** function can be toggled on or off (the default is off).

Before this function can be available in the Configurator Module, you must setup the following key, and then restart e7 afterwards:

"PosConfig.EnableDbRestoreDefs" value="True"

The key is located in `...\microse7\Cfg\e7config.txt` and needs to be set to "True" on each workstation that will have the Restore Definitions function available in the Configurator.

Attention: The following points have to be considered when using the Backup/Restore function:

- The e7 version the backup definition file has been created on has to be identical with the e7 version the definition file will be restored on.
- Backup/Restore definitions is supported within the same e7 system/database.
- Using a backup definition file to be restored in a different system requires a "clear all totals" before performing a restore definitions.
- It's strongly recommended not to delete menu items or employees while editing a database. Menu items should be set to **Hide on display** and employees should be set to **Inactive** rather than be deleted.
- If the system consists of more than one workstation, after restoring definitions, you must **Retrieve All Definitions** on all other workstations. The **Retrieve Newer Definitions** will not synchronize the databases.

Note: In version 4.0, e7's proprietary file based database has been replaced with a SQLite DB. As a result of this change, the **Restore Database Definitions** function in e7 has been amended to support SQLite databases only. Therefore, a **Database Definitions** backup file from version 3.x cannot be restored. To restore Database Definitions, see [Restore a database from a version 4.x backup file](#).

Appendix A: e7 System Config File

Always Show Business Day Warning

<add key="AlwaysShowBdWarning" value="True" />

True (default): Warning message for incorrect business days appears with each Clock-In, Sign-In and Open/Pick-up Check.

False: Warning message for incorrect business days appears only once per user.

Database Import

<add key="PosConfig.EnableDbImport" value="True" />

True (default): Database definitions can be imported

False: The "Import Database function is not available in the configurator.

Restore Definitions:

<add key="PosConfig.EnableDbRestoreDefs" value="False" />

True: A database definition file can be restored (complete database definitions)

False (default): The "Restore Definitions" function is not available in the configurator.

Run OPS on PC (in demo mode):

<add key="InterMd" value="False" />

True: OPS can be run on PC assumed the system is in DEMO MODE (!)

False (default): Running OPS on PC is denied.

Note: To take effect of changes made in the above keys requires restarting e7.

Important: Do NOT change the following keys:

<add key="LastDefaultLangIndex" value="0" />

<add key="DefaultLangIsUnicode" value="True" />

<add key="PosConfig.MenuTreeItemHeight" value="23" />

<add key="POSConfig.ToolbarConfig"
value="FormMenu,RecordToolbar,RecordMenu,MiscToolbar,MiscMenu,ReturnToOpsToolbar" />

<add key="PosConfig.TreeViewFontSize" value="12" />

<add key="PosConfig.FontStyle" value="0" />

<add key="PosConfig.TreeViewFontStyle" value="0" />

<add key="WorkStationType" value="None" />

<add key="PcDefObjectNumber" value="1" />

<add key="UwsObjectNumber" value="0" />

Appendix B: Hardware – Factory Restore

WS4 LX

The following procedure describes how to execute a Factory Restore on the MICROS Workstation 4 LX. The primary purpose of Factory Restore is to repair a workstation that previously did not boot.



Warning: Factory Restore formats the CF Card. If required, take steps to preserve files on the CF card before running Factory Restore.

1. Connect a USB keyboard to the workstation, and then turn on the workstation.
2. When the Blue BIOS splash screen appears, press the key combination [ALT-M].
Note: Some keyboards may not initialize in time to detect this key combination. As an alternative, you can press [Del] to enter BIOS Setup, select the **Features Configuration** menu, and then set the WIN_CE_FACTORY_RESTORE field to **Enabled**. Press [ESC] to continue.
3. The screen prompts for the system password. If you have not changed the default system password, enter 'Hmlton' (case sensitive) and press enter. Press **Y** to confirm.
4. Select **Write to CMOS and Exit**, and then press enter. Press **Y** to confirm.
5. The workstation restarts and prompts 'Factory Restore in Progress – Please Wait.'
6. When the process is complete, the unit restarts. The workstation is now running the CE image and platform files placed in the factory restore partition when the unit was manufactured. After the unit is placed in the field, subsequent CAL updates to the platform files and/or OS images may occur.
7. The workstation can now be pointed to a properly configured application server where it will receive the latest available platform and OS updates along with a copy of the POS application.

WS5 – Microsoft Windows CE

The following procedure describes how to execute a Factory Restore on the MICROS Workstation 5 for Microsoft Windows CE. The primary purpose of Factory Restore is to repair a workstation that previously did not boot.



Warning: Factory Restore formats the CF Card. If required, take steps to preserve files on the CF card before running Factory Restore.

-
1. Remove any USB thumb or flash drives from the IO panel connectors, attach a USB keyboard, and turn on the workstation.
 2. When the Blue BIOS splash screen appears, press the key combination [ALT-M].
Note: Some keyboards may not initialize in time to detect this key combination. Alternately, you can press the [DEL] button at power up to enter BIOS Setup, select the **Features Configuration** menu, and then set the WIN_CE_FACTORY_RESTORE field to **Enabled**. Press [ESC] to continue.
 3. Remove all external USB storage devices, and then press Enter.
 4. The screen prompts for the system password. If you have not changed the default system password, enter 'Grnbelt' (case sensitive) and press Enter. Press **Y** to confirm.
 5. From the Main Menu, select **Write to CMOS and Exit**, press Enter, and press then **Y** to save changes and exit.
 6. The unit restarts and prompts 'Factory Restore in Progress – Please Wait.'
 7. After Factory Restore copies the platform files as described above, it formats the CF Card. When the process is complete, the unit restarts. The workstation is now running the CE image and platform files placed in the factory restore partition when the unit was manufactured. After the unit is placed in the field, subsequent CAL updates to the platform files and/or OS images may occur.
 8. The unit can now be pointed to a properly configured application server where it will receive the latest available platform and OS updates along with a copy of the POS application.

WS5A

The following procedures describe how to execute a Factory Restore on the MICROS Workstation 5A. The primary purpose of Factory Restore is to repair a workstation that previously did not boot.



Warning: Factory Restore formats the CF Card. If required, take steps to preserve files on the CF card before running Factory Restore.

Note: BIOS Versions Q2010g and Q2011d require a pre-defined password to start recovery. The password requirement can be disabled through the ODM tab. The password is "Quant1c0".

Microsoft Windows CE 6.0 R3 - Recovery Button Procedure

1. Turn off the workstation.
2. Remove any USB Thumb Drives that are attached to the IO Panel.
3. Turn on the workstation.
4. Observe the screen and use a paper clip or similar object to push the Factory Restore button before the Blue BIOS splash /w Oracle MICROS logo screen appears.



Figure 7 – WS5A Factory Restore Button

5. The workstation restarts, displays the Blue splash screen, and then Factory Restore message appears. The procedure takes about three minutes.
6. The workstation automatically restarts when the process is complete.

Microsoft Windows CE 6.0 R3 - USB Keyboard Procedure

Note: BIOS Versions Q2010g and Q2011d require a pre-defined password to start recovery. The password requirement can be disabled through the ODM tab. The password is "Quant1c0".

1. With power off, connect a USB Keyboard.
2. Remove any USB Thumb Drives that may be attached to the IO Panel.
3. Turn on the workstation.
4. When the Blue BIOS splash screen /w Oracle MICROS logo appears, press [DEL] to enter the System Configuration Menu.
5. Select the ODM tab.
6. Scroll down to the **WINCE Factory Restore** field, and then press [-] to change the field to **Enabled**.
7. Select the Exit tab, select **Save Setting and Restart**. Press [Enter], and then **Y** to continue.
8. The unit restarts and prompts 'Factory Restore in Progress – Please Wait.'

-
9. When the process is complete, the unit restarts. The workstation is now running the CE image and platform files placed in the factory restore partition when the workstation was manufactured. After the unit is placed in the field, additional Platform Updates may occur.
 10. The unit can now be pointed to a properly configured application server where it will receive the latest available platform and OS updates along with a copy of the POS application.

POSReady2009 Recovery CF Card - Recovery Button Procedure

Note: BIOS Versions Q2010g and Q2011d require a pre-defined password to start recovery. The password requirement can be disabled through the ODM tab. The password is "Quant1c0".

Note: This procedure requires the "POSReady 2009 Recover CF Card". The POSReady 2009 Recovery CF Card should only be used on a POSReady 2009 Workstation 5 with a valid COA Sticker. Using the POSReady 2009 Recovery CF on a WS5A that does not include a valid COA Sticker violates the Microsoft End User License Agreement.

1. Turn off the Workstation 5A.
2. Install the POSReady 2009 Recovery CF Card in the CF Card Riser.
3. Remove any USB Thumb Drives that may be attached to the IO Panel.
4. Turn on the Workstation 5A.
5. Observe the screen and when the first black screen appears (Intel...) use a paper clip or similar object to press the Factory Restore button. The recovery button has to be pressed before the Blue BIOS splash /w Oracle MICROS logo screen appears.
6. The workstation restarts and boots from the Recovery CF Card.
7. After a brief period of time, a Command Window opens and the message 'Loading Recovery Script...' is displayed.
8. If the image specified in the RECOV.DAT file is present, the transfer starts. If the image name and path are not specified correctly, you will see an error box stating 'Image file not Found!' See the [POSReady2009 - Using a Custom Recovery Image](#) section for more information.
9. When the recovery image transfer is complete, the automatically workstation restarts.
10. Press **Next**, and then enter the required information in the Setup Wizard. Most of the requested information will be site specific. When complete, the workstation automatically restarts, and the restored image is ready for use.

POSReady2009 Recovery CF Card - BIOS Factory Restore

Note: BIOS Versions Q2010g and Q2011d require a pre-defined password to start recovery. The password requirement can be disabled through the ODM tab. The password is “Quant1c0”.

Note: This procedure requires the “POSReady 2009 Recover CF Card. The POSReady 2009 Recovery CF Card should only be used on a single POSReady 2009 Workstation 5 with a valid COA Sticker. Using the POSReady 2009 Recovery CF on a WS5A that does not include a valid COA Sticker violates the Microsoft End User License Agreement.

1. Turn off the Workstation 5A.
2. Connect a USB Keyboard to the WS5A IO Panel.
3. Remove any USB Thumb Drives that may be attached to the IO Panel.
4. Install the POSReady 2009 Recovery CF Card in the CF Card Riser.
5. Turn on the Workstation 5A.
6. When the Blue splash screen /w Oracle MICROS logo appears, press [DEL] to enter the System Configuration Utility.
7. Select the ODM Tab.
8. Scroll down to the **Win32 Factory Restore** field, and then press [-] to change the field to **Enabled**.
9. Select the Exit tab, and then select **Save Setting and Restart**. Press [Enter], and then **Y** to restart.
10. The workstation restarts and boots from the Recovery CF Card.
11. After a brief period of time, a Command Window appears, and then the message ‘Loading Recovery Script...’ is displayed.
12. If the image specified in the RECOV.DAT file is present, the transfer starts. If the image name and path are not specified correctly, you will see an error box stating ‘Image file not Found!’ See the [POSReady2009 - Using a Custom Recovery Image](#) section for more information.
13. When the recovery image transfer is complete, the workstation automatically restarts.
14. Press **Next**, and then enter the required information in the Setup Wizard. Most of the requested information will be site specific. When complete, the workstation automatically restarts, and the restored image is ready for use.

POSReady2009 - Using a Custom Recovery Image

To substitute a custom image, see the procedure below.

Note: BIOS Versions Q2010g and Q2011d require a pre-defined password to start recovery. The password requirement can be disabled through the ODM tab. The password is “Quant1c0”.

1. Power up a functional WIN32 WS5A with the Recovery CF installed and use Microsoft Windows Explorer to browse to the Recovery CF Card. A CF Card Reader in a notebook or desktop could also be used.
2. Delete or move the factory image with the .gho extension from the root of the CF Card.
3. Copy your custom image file to the root of the CF Card.
4. Use Notepad to open the RECOV.DAT file. On the last line, replace ‘WS5A POSReady xx.GHO’ (xx refers to the current version number) with your image name and extension. For example, type: ‘YOURIMAGENAME.GHO’5. Save the changes and exit Notepad.
5. Perform a test recovery to verify that the custom image file name is correct. If the Ghost image name and path are not specified correctly, you will see an error box stating ‘Image file not Found!’

You can enter the correct path/filename from the error box, or modify the RECOV.DAT file with the correct path and image name. A path is required only if the recovery image is located in a folder.

POSReady2009 – BIOS update

BIOS Version Q2011d should be installed on each Workstation 5A running Microsoft Windows POSReady2009. It is fully backwards compatible with the Revision D System Board and can replace existing BIOS Versions Q1000g, Q1010m, and Q2010g.

A bootable USB Flash Drive or stick is required to upgrade the BIOS.

The files required for the BIOS update are included in the “Oracle Hospitality e7 Point-of-Sale” software package, located in the

```
...\Standalone Installation\BIOS-Update_WS5A_POSReady2009  
\Q2011d\... folder.
```

Copy the following files to the root folder of the bootable USB Thumb Drive:

- FPROG.EXE (BIOS Update Utility)
- DOS4GW.EXE (DOS Protected Mode Runtime)
- Q2011D.BIN (BIOS Binary)
- Q2011D.BAT (BIOS Update Batch File)
- FPARTS.TXT

BIOS Update Procedure - USB Hard Disk (uDOC)

1. Shut down the Workstation 5A, install a USB Keyboard, and the bootable USB Flash Drive.
2. Power up and press [Delete] when the Blue BIOS Splash Screen /W Oracle MICROS logo displays.
3. Proceed to the ODM Tab, select the **Boot Test Image** field, and then set it to **Alternate**.
4. Return to the Exit tab, select **Save Settings and Restart**, and then Press **Y** to restart the unit.
5. After the workstation restarts, it should boot from the USB Flash Drive and display a C:\ prompt.
6. At the C:\ prompt, type Q2011d, and then press **Enter**.
7. After the BIOS Upgrades, press and hold the power button until the unit shuts down.
8. Press the power button again to restart.
9. Press [Delete] when the Blue BIOS Splash Screen /w Oracle MICROS logo displays.
10. Proceed to the Exit tab, select **Reload USB WIN32 Factory Default Settings**, and then press **Y** to restart.
11. After the Workstation restarts, it should boot from the USB Flash Drive and start Microsoft Windows POSReady 2009.

WebDT430 – Factory Recovery (USB)

Contact Customer Support to receive the files required for a Factory Recovery.

Depending on DT430 or DT430SC, copy the respective files to the root folder of a USB Thumb Drive:

File for DT430C to recover OS-Image version: USSTC600.0001.03152011

- DT430C.2421.03152011_EBOOT.dtr
- DT430CST.01.03152011_LOGO.dtr
- DT430CUSSTC600.0001.03152011.dtr

Files for DT430SC to recover OS-Image version: USMicrosC600.0001.03202012

- DT430SC.6410.03202012_EBOOT.dtr
- DT430SCST.01.03202012_LOGO.dtr
- DT430SCUSMicrosC600.0001.03202012.dtr

To update:

1. Verify that your device is currently running the OS-Image version as stated above.
2. Plug the USB storage device into the WebDT430(SC).
3. Power on the WebDT430(SC) with the AC adapter connected (or on a charging cradle that is power connected with the AC adapter).

-
4. Tap **Start, Programs**, and then **Update** to launch the Update utility.
 5. Select **Local** in the WebDT Update dialog window.
 6. Press the **Browse** button to select the eboot image file on the USB storage device.
 7. Click the **Update** button to update the eboot.
 8. Press the **Browse** button to select the logo image file on the USB storage device.
 9. Click the **Update** button to update the logo.
 10. Press the **Browse** button to select the OS image file on the USB storage device.
 11. Click the **Update** button to update the OS.
 12. A message box will be displayed to show the OS update progress. It will take several minutes to complete. After the OS update is done, the system will automatically restart.

MICROS Tablet R-Series

The following procedure describes how to execute a Factory Restore for the MICROS Table R-Series.



Warning: Factory Restore formats the internal SD Card. If required, take steps to preserve files on the CF card before running Factory Restore.

1. Run the “Recovery” application using one of these methods:
 - Power Button: When mTablet is OFF, press and hold the power button while observing the Battery LED. When it starts blinking Red after about 10 seconds, release the Power Button. The unit restarts and displays the splash screen with the Oracle MICROS logo, followed by the ‘Unlock’ keypad.
 - From the Desktop, double tap **My Device**, then navigate to the `BOOT\Utilities` folder and double tap the **Recovery** icon.
2. The Unlock keypad opens. Apply the following formula to the six digit number that appears at the top of the dialog box:
$$\textit{Digit 1} \times \textit{Digit 2} + \textit{Digit 4} + \textit{Digit 6} = \textit{Password}$$
3. Enter the password and tap the **Unlock** button.
4. The Recovery Utils Menu opens. Click **Factory Recovery**.
5. After the Factory Recovery is complete, the unit will automatically reboot.