
Oracle[®] MICROS Restaurant Enterprise Solution Enterprise Management Version 5.4

ReadMe First

General Information

About This Document

ReadMe First is a quick reference guide that includes information about the new features, enhancements, and revisions added since the 5.2 release of the MICROS Enterprise Management (EM) software.

*******IMPORTANT*******

EM 5.4 requires that RES 5.4 be installed on the Enterprise Management Server.

For more information about the RES versions that are supported by EM 5.4, refer to the EM & RES Version Compatibility page in this document.

Transaction Analyzer Classic is no longer installed with Central Setup.

Revision A
October 14, 2014
Page 1 of 18

In EM Version 5.4, the following documents are no longer installed:

- ◆ Restaurant Enterprise Solution Enterprise Management Version 5.4 Installation and Setup Guide (Located on Member Services)
- ◆ Restaurant Enterprise Solution Enterprise Management Version 5.4 ReadMe First (Located on Member Services)

Within the Enterprise Management Version 5.4 section, product information is organized as follows:

- ◆ What's New
- ◆ What's Enhanced
- ◆ What's Revised

Each subsection begins with an introduction and includes a table that summarizes the features and functionality incorporated in this version of the software. The table provides hypertext links to supplementary text and graphics about the selected topics.

This release may contain some known issues that require configuration to prevent. These issues will contain the text “**KNOWN ISSUE**” before a description of the event in the Revisions section of this document. Please review this section carefully.

For installation and configuration instructions see the *Enterprise Management 5.4 Installation and Setup Guide*.

Declarations

© 2014, Oracle and/or its affiliates. All rights reserved.

This software and related documentation are provided under a license agreement containing restrictions on use and disclosure and are protected by intellectual property laws. Except as expressly permitted in your license agreement or allowed by law, you may not use, copy, reproduce, translate, broadcast, modify, license, transmit, distribute, exhibit, perform, publish, or display any part, in any form, or by any means. Reverse engineering, disassembly, or decompilation of this software, unless required by law for interoperability, is prohibited.

The information contained herein is subject to change without notice and is not warranted to be error-free. If you find any errors, please report them to us in writing.

If this software or related documentation is delivered to the U.S. Government or anyone licensing it on behalf of the U.S. Government, the following notice is applicable:

U.S. GOVERNMENT END USERS: Oracle programs, including any operating system, integrated software, any programs installed on the hardware, and/or documentation, delivered to U.S. Government end users are "commercial computer software" pursuant to the applicable Federal Acquisition Regulation and agency-specific supplemental regulations. As such, use, duplication, disclosure, modification, and adaptation of the programs, including any operating system, integrated software, any programs installed on the hardware, and/or documentation, shall be subject to license terms and license restrictions applicable to the programs. No other rights are granted to the U.S. Government.

This software or hardware is developed for general use in a variety of information management applications. It is not developed or intended for use in any inherently dangerous applications, including applications that may create a risk of personal injury. If you use this software or hardware in dangerous applications, then you shall be responsible to take all appropriate fail-safe, backup, redundancy, and other measures to ensure its safe use. Oracle Corporation and its affiliates disclaim any liability for any damages caused by use of this software or hardware in dangerous applications.

Oracle and Java are registered trademarks of Oracle and/or its affiliates. Other names may be trademarks of their respective owners.

Intel and Intel Xeon are trademarks or registered trademarks of Intel Corporation. All SPARC trademarks are used under license and are trademarks or registered trademarks of SPARC International, Inc. AMD, Opteron, the AMD logo, and the AMD Opteron logo are trademarks or registered trademarks of Advanced Micro Devices. UNIX is a registered trademark of The Open Group.

This software or hardware and documentation may provide access to or information on content, products, and services from third parties. Oracle Corporation and its affiliates are not responsible for and expressly disclaim all warranties of any kind with respect to third-party content, products, and services. Oracle Corporation and its affiliates will not be responsible for any loss, costs, or damages incurred due to your access to or use of third-party content, products, or services.

Who Should Be Reading This Document

This document is intended for the following audiences:

- ◆ MICROS Installers/Programmers
- ◆ MICROS Dealers
- ◆ MICROS Customer Service
- ◆ MICROS Training Personnel
- ◆ MICROS Customer Database Administrator
- ◆ Customer MIS Personnel
- ◆ Customer Database Administrator

What the Reader Should Already Know

This document assumes that you have the following knowledge or expertise:

- ◆ Operational understanding of PCs
- ◆ Understanding of basic network concepts
- ◆ Experience with Windows Operating Systems.
- ◆ Basic knowledge of relational database concepts
- ◆ Understanding of hospitality terminology and concepts
- ◆ Understanding of MICROS 3700 POS system and Restaurant Enterprise Series products

**EM and RES
Version
Compatibility**

The *EM 5.4 Installation and Setup Guide* contains a detailed list of EM versions installed at corporate and the corresponding version of RES required at both corporate and at EM stores (for all versions).

Please refer to this document for more information.

EM 5.4 (5.4.1.236)

RES Corporate Version	RES Store Versions
5.4 (5.4.1.236)	5.0 GR (5.0.0003.0416) & Higher 4.5 (4.5.7.1983) & Higher 4.3 HF2 (4.3.22.1824) & Higher

Enterprise Management Version 5.4

What's New

A new feature is defined as one that provides capabilities that were not available in previous versions of the application.

New Features Summarized

No new features have been added to this release.

What's Enhanced

An enhancement is defined as a change made to improve or extend the functionality of the current EM application. To qualify as an enhancement, the change must satisfy the following criteria:

- ◆ The basic feature or functionality already exists in the previous release of the software.
- ◆ The change adds to or extends the current process. This differs from a revision (i.e., a bug fix) which corrects a problem not caught in the previous release of the software.

Enhancements Summarized

The table below summarizes the enhancements included in this version.

Module	Enhancement	TP ID/ CR ID	Page
POS Configurator	Bulk Menu Item Price Wizard Enhancements	69984/ N/A	8

Enhancements Detailed

POS Configurator

Bulk Menu Item Price Wizard Enhancements

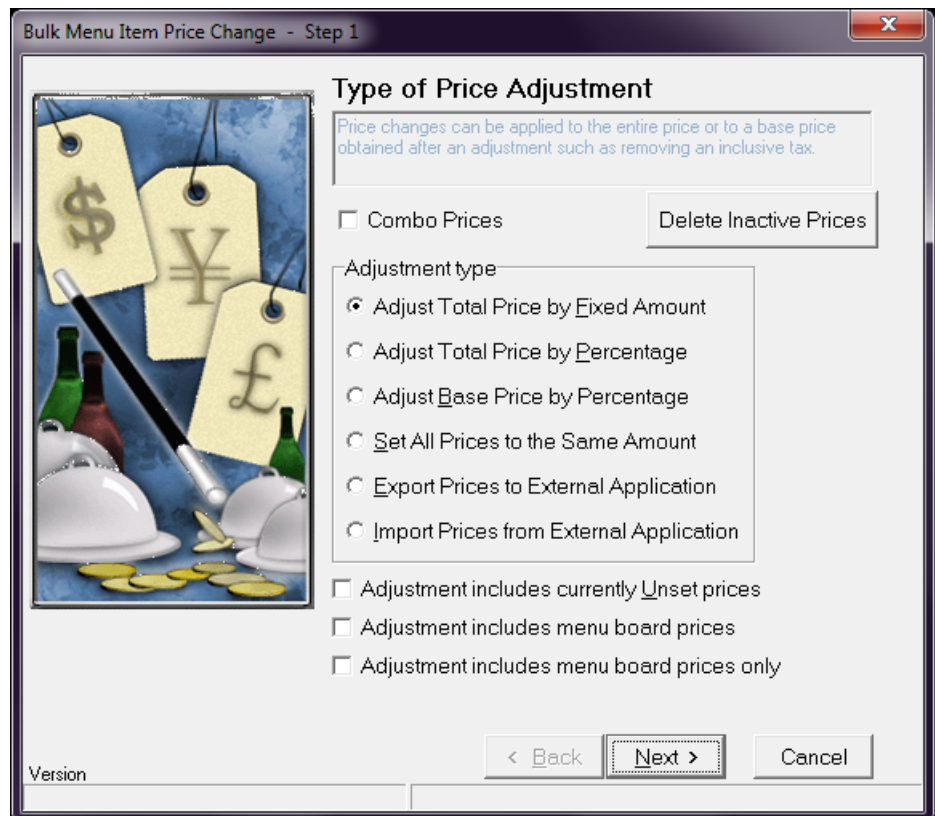
Target Process ID#: 69984

CR ID#: N/A

Several enhancements have been made to the existing Bulk Menu Item Price Wizard (MI Price Wizard) in EM 5.4 to improve ease of use. The following changes were made to this utility:

- ◆ Ability to sort by menu item Object Number in the MI Price Wizard
- ◆ New checkbox option to make adjustments by Combo Prices
- ◆ New Delete Inactive Prices button (to delete by Menu Item or by Combo Group)

- ◆ New By Menu Item tab to allow the user to select Menu Item first, then Price Tier
- ◆ New By Combo Group tab to allow selection by combo group
- ◆ Export File to now include Name and Object Number from Combo Group Definition Table, when exporting Combo Group Prices to an External Application

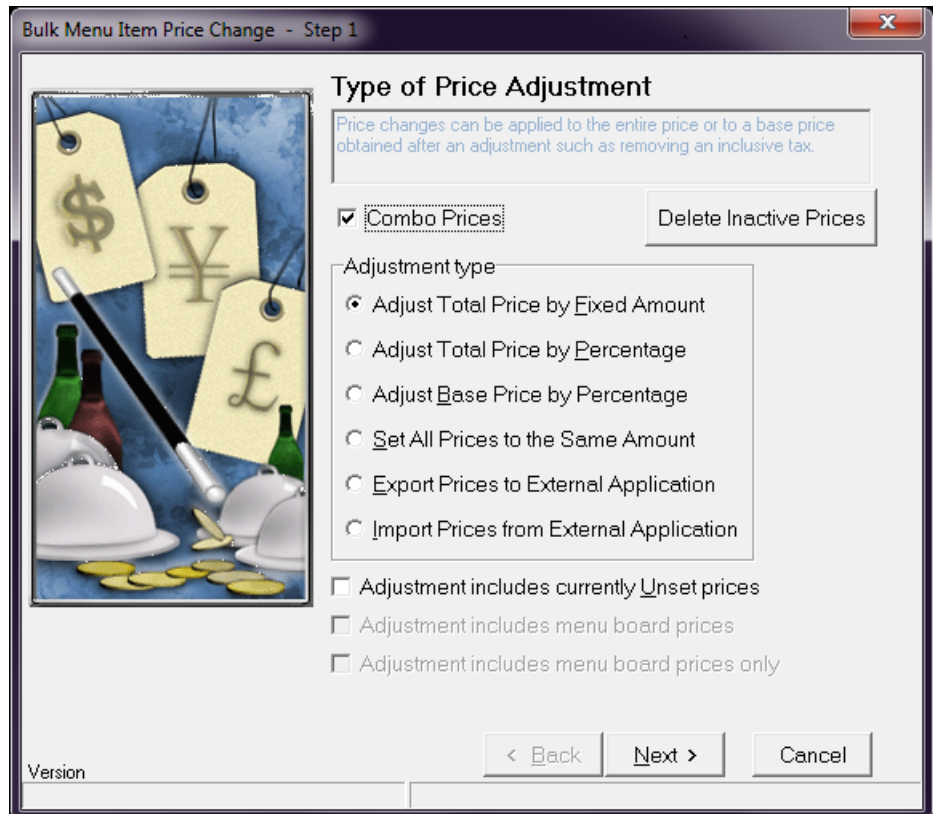


Ability to sort by menu item Object Number in the MI Price Wizard

Previously, when using the Menu Item Price Wizard, all sorting was done by database sequence number. The MI Price Wizard in EM 5.4 has been enhanced to allow the user to sort by object number, which corresponds to the record number in the POS Configurator, making this utility easier to locate items and make adjustments.

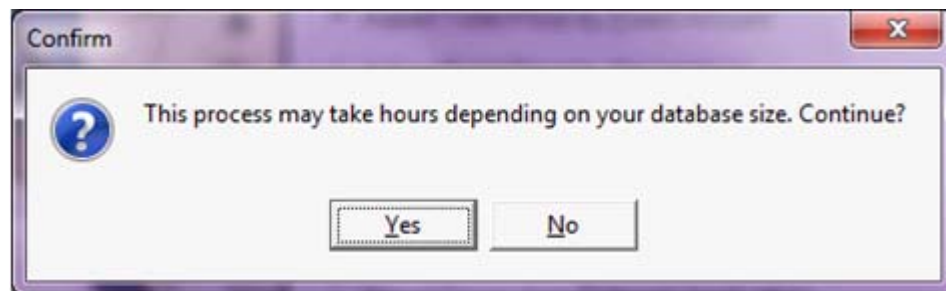
New checkbox option to make adjustments by Combo Prices

A new checkbox option called **Combo Prices** has been added to the Type of Price Adjustment screen in the MI Price Wizard. When this option is enabled, price adjustments will be handled by Combo Group Prices versus Menu Item Prices.



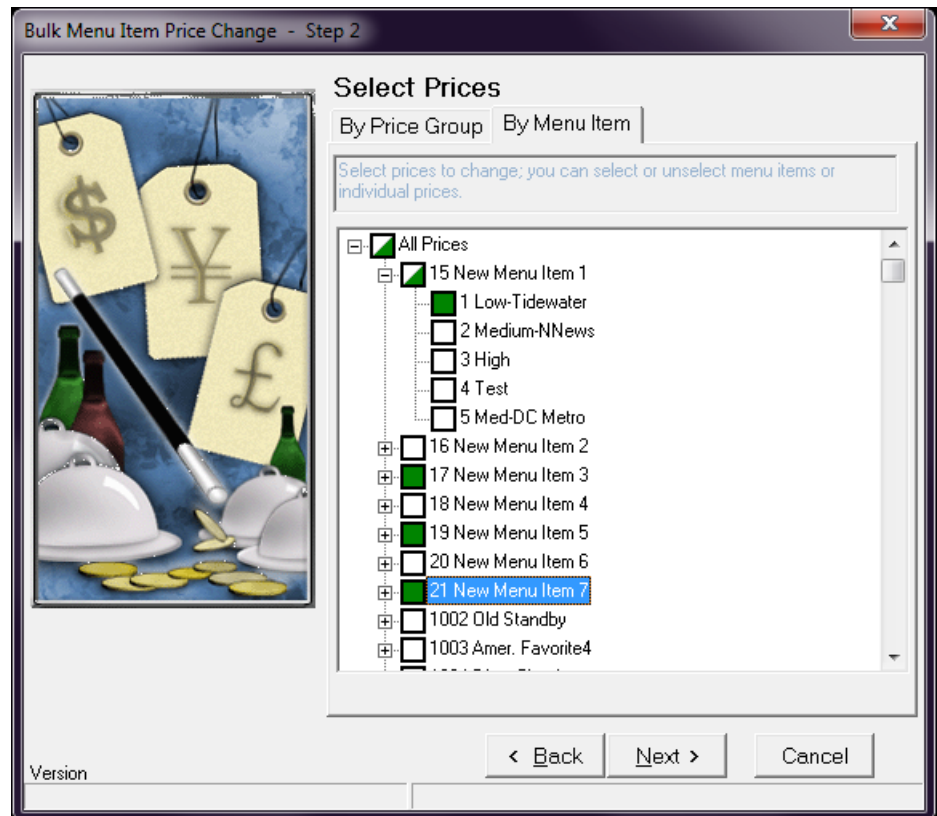
New Delete Inactive Prices button (to delete by Menu Item or by Combo Group)

A new **Delete Inactive Prices** button has been added to the MI Price Wizard (see the sample screen on page 9 showing this new button). This is used to delete inactive prices for Menu Items or Combo Groups. If the **Combo Prices** checkbox option is enabled, then inactive prices for Combo Groups will be deleted. If the **Combo Prices** checkbox is disabled, then inactive prices will be deleted for Menu Items. When the Delete Inactive Prices button is selected a confirmation dialog box appears. Select Yes to proceed or No to cancel the operation.



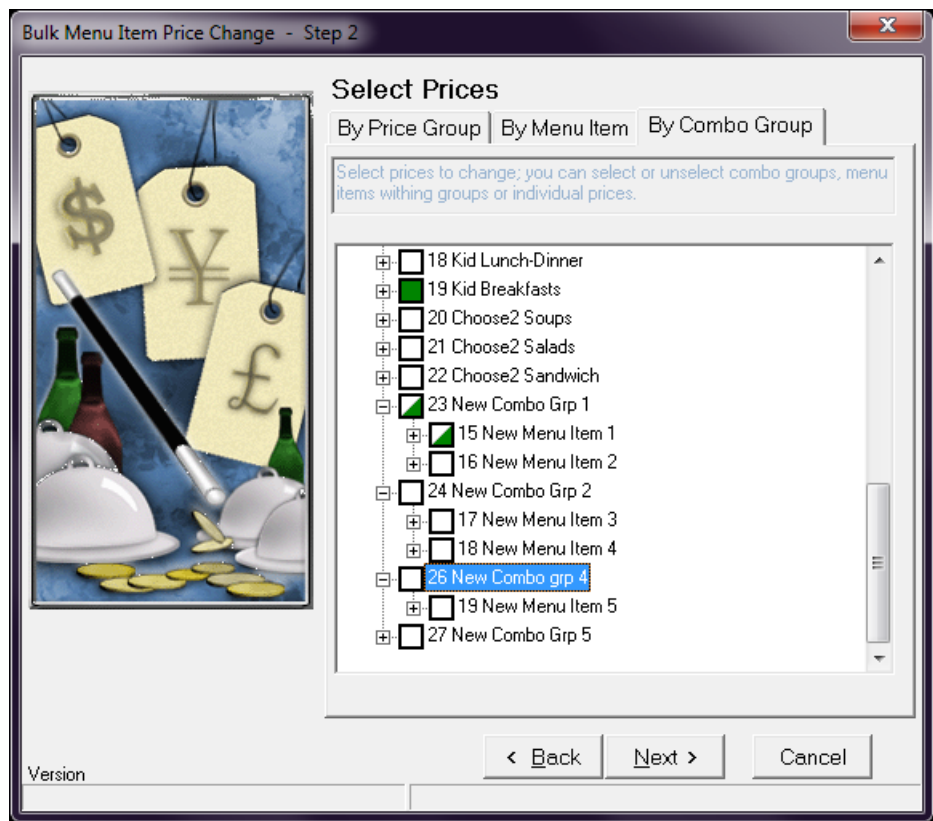
New By Menu Item tab to allow the user to select Menu Item first, then Price Tier

The By Menu Item tab in the MI Price Wizard now allows the user to select the desired menu item to be adjusted first, then select the Price Tier. In previous versions, the user had to select the Price Group first, followed by the Price Tier, and then finally the Menu Item. This was a time consuming process.



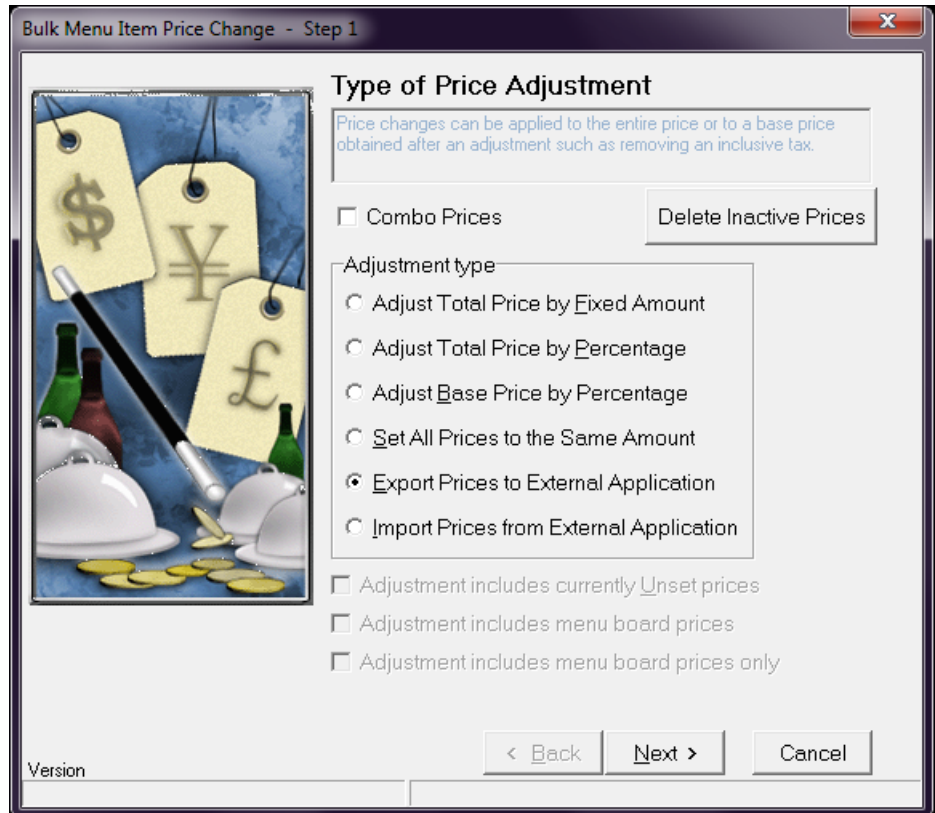
New By Combo Group tab to allow adjustments by combo group

If the **Combo Prices** checkbox is enabled in the MI Price Wizard (on the Step 1 form), the new By Combo Group tab appears on the Step 2 form, illustrated in the following sample screen. Price adjustments can then be made by Combo Group, for specific Menu Items within a Combo Group, or for a particular Price Tier.



Export File to now include Name and Object Number from Combo Group Definition Table, when exporting Combo Group Prices to an External Application

When exporting Combo Group Prices, to an External Application, the name and object number from the Combo Group Definition table are included. This makes it easier to identify which items belong to a particular Combo Group.



What's Revised

A revision is defined as a correction made to any existing form, feature, or function currently resident in the EM software. To qualify as a revision, the change must satisfy the following criteria:

- ◆ The basic form, feature, or functionality must be part of the previous version of the software.
- ◆ The change must replace the current item or remove it from the application.

Additionally, all reported issues that are deemed to be BY DESIGN are included in this section as well. These issues will contain the preface **BY DESIGN** in front of the feature name.

Revisions Summarized

The table below summarizes the revisions included in this release:

Module	Revision	TP ID/ CR ID	Page
Enterprise Management	EM Consolidated Sales Report showed incorrect carried over totals	64739/ N/A	15
	Apply savings as a discount option was missing from corporate	71000/ N/A	16

Revisions Detailed

Enterprise Management

EM Consolidated Sales Report showed incorrect carried over totals

Target Process ID#: 64739

CR ID#: N/A

The EM Consolidated Sales Report showed incorrect Carried Over count and totals. This has been corrected.

Apply savings as a discount option was missing from corporate

Target Process ID#: 71000

CR ID#: N/A

The option **Apply savings as a discount** was added in *EMCC / Combo Meals / Revenue Center Options*.

What's Known

What's Known is defined as what needs to be completed for a successful version upgrade for certain modules.

What's Known Summarized

The table below summarizes the known limitations in this version.

Module	Feature	TPID/ CR ID	Page
Setup	Central Setup directory error	73773/ N/A	17

What's Known Detailed

Setup

Central Setup directory error

Target Process ID#: 73773

CR ID#: N/A

When installing CentralSetup.exe on an EM Corporate Server, you may encounter the following error if the logged in user does not have full permission to certain EM related folders:

“Setup is unable to create the directory "C:\MICROS\Res\EM\XML".
Error 5: Access is denied.”

If you run CentralSetup.exe again, it should run without error on the second attempt.

To avoid this issue, ensure that the logged in user has Full Access to the following folders:

- ◆ ..\MICROS\Res\EM\XML
- ◆ ..\MICROS\Res\EM\Etc
- ◆ ..\MICROS\Res\EM\dbupdate

- ◆ ..\MICROS\Res\EM\tmp

Note *This error can occur when running EM Setup for Central Setup, Store Setup, and Corporate Client.*
