



*Restaurant Enterprise Solution
(RES) Version 4.9
Maintenance Release 2*

About This Document

This document provides installation instructions for the MICROS Restaurant Enterprise Solution (RES) Maintenance Release 2 for Version 4.9. The process ensures the proper transfer and configuration of the files, programs, and database required for the smooth operation of the applications.

Within each section, product information is organized as follows:

- ◆ What's New
- ◆ What's Enhanced
- ◆ What's Revised
- ◆ What's Known

Each section begins with an introduction and includes a table that summarizes the features and functionality incorporated in this version of the software. The table provides hypertext links to supplementary text and graphics about the selected topics.

For more information on these features, and step-by-step instructions for configuring them, refer to the product's Online Reference Manual, available from the MICROS website.

Declarations

Warranties

Although the best efforts are made to ensure that the information in this document is complete and correct, MICROS Systems, Inc. makes no warranty of any kind with regard to this material, including but not limited to the implied warranties of marketability and fitness for a particular purpose.

Information in this document is subject to change without notice.

No part of this document may be reproduced or transmitted in any form or by any means, electronic or mechanical, including photocopying, recording, or information recording and retrieval systems, for any purpose other than for personal use, without the express written permission of MICROS Systems, Inc.

MICROS Systems, Inc. shall not be liable for errors contained herein or for incidental or consequential damages in connection with the furnishing, performance, or use of this document.

Trademarks

FrameMaker is a registered trademark of Adobe Corporation.

Microsoft, Microsoft Excel, Win32, Windows, Windows®95, Windows 2000 (Win2K), and Windows NT are either registered trademarks or trademarks of Microsoft Corporation in the U.S. and/or other countries.

Visio is a registered trademark of Visio Corporation.

All other trademarks are the property of their respective owners.

Maintenance Release 2

Installing a Maintenance Release

This Maintenance Release can only be installed on a system that has the released version of RES 4.9 (build 4.9.3.2824) or RES 4.9 Maintenance Release 1 installed.

Before You Begin

1. Close ALL running MICROS applications, except Control Panel.
2. In the MICROS Control Panel, set the Restaurant to OFF.
3. Make sure all of the POS Clients are at System Closed.
4. Close the MICROS Control Panel

Installation

1. Copy the Maintenance Release, RES_49_MR2.exe to the temp folder on your RES Server.
2. Double-click on RES_49_MR2.exe. The patch will run for a short time. Once the patch is complete, the RES server will automatically reboot.

Installation Notes

Installing the Maintenance Release on a RES server will stop all of the running MICROS services before installing the updated files. The RES server will reboot upon completion. The Maintenance Release may include updated files for the POS Clients. Once the server has rebooted, all of the clients will install the updated files. Once finished, the clients will then reboot.

Before installing updated files on your system, the Maintenance Release preserves the original files by appending .PrePatchRestore to the existing filename. **It is absolutely critical that these renamed files be left in place**, exactly as they are. The removal or modification of these archived .PrePatchRestore files will render your RES server un-patchable by future RES releases.

The same Maintenance Release may be installed more than once. This should not be needed, except in the rare case where an installation has failed. Multiple Maintenance Releases may be installed as needed.

Installing the Maintenance Release produces a log file named MicrosNovaPatch.log, which will be located in the %windir% folder.

Installing a Maintenance Release will create a unique registry key:

HKEY_LOCAL_MACHINE\SOFTWARE\MICROS\NovaFix\RES_49_MR2

Within this key, a value name 'Installed Date' is created. The data for this value will be the date the Maintenance Release was installed.

All maintenance releases will add a row to the database in db_version_cfg to indicate that a Maintenance Release patch has been executed against the DB. The 'db_module_desc' will be 'RES 4.9 Maintenance Release 2'. The 'db_service_pak_desc' column will be the same as the RES row.

***** Reminder *****

It is recommended that custom applications be re-installed and tested after applying any upgrade to a RES system. This includes, SQL scripts that add or alter custom stored procedures.

***** Reminder *****

Using Database Manager to upgrade a database with the same major version as the server will return the message "*Database is current, no update needed.*" The database and the server are the same major version because Maintenance Releases do not change from the General Release version.

After restoring a database with a lower Maintenance Release than the server, the user must re-run the higher Maintenance Release patch, which will successfully update the database.

Maintenance Release 2

What's New

A new feature is defined as one that provides capabilities that were not available in previous versions of the application.

New Features Summarized

The table below summarizes the new features included in this version.

| Module | Revision | CR ID/ SCR | Page |
|------------|---|------------|------|
| Printing | Sales Recording Module (SRM) Now Supported | N/A/ 38365 | 5 |
| PINpad.dll | Support Added for Protégé | N/A/ 38396 | 12 |
| OPS API | Support Added For Allowed Condiments From API | N/A/ 38410 | 13 |

New Features Detailed

Printing

Sales Recording Module (SRM) Now Supported

CR ID #: N/A

SCR #: 38365

Starting in November 2011 all restaurants in the province of Quebec must use a Sales Recording Module (SRM) for every printer that prints a customer's receipt. To connect this device you will need to have the Quebec SRM, an Epson TM88 serial print (this is the only printer at this time that is supported), a female to female db9 null modem, and a db9 to db25 serial cable.

For more information about the SRM please visit the Revenue Quebec web site at:

http://www.revenu.gouv.qc.ca/en/ministere/evasion_fiscale/restauration/mev/mev.aspx

Note



RES 4.9 MR2 or higher must be installed to be able to use the SRM device.

Please upgrade to version 4.9 MR2 or higher if currently on a previous version prior to connecting the SRM device.

Note



The option 'Suppress Guess Check Printing' is not compatible when SRM is enabled.

To configure the SRM device please refer to the documentation at the following address:

<http://www.revenu.gouv.qc.ca/en/sepf/publications/in/in-577.aspx>

Once the SRM device is configured, powered on and the software is at least at version 4.9 MR2, the following changes will need to be made within Configurator.

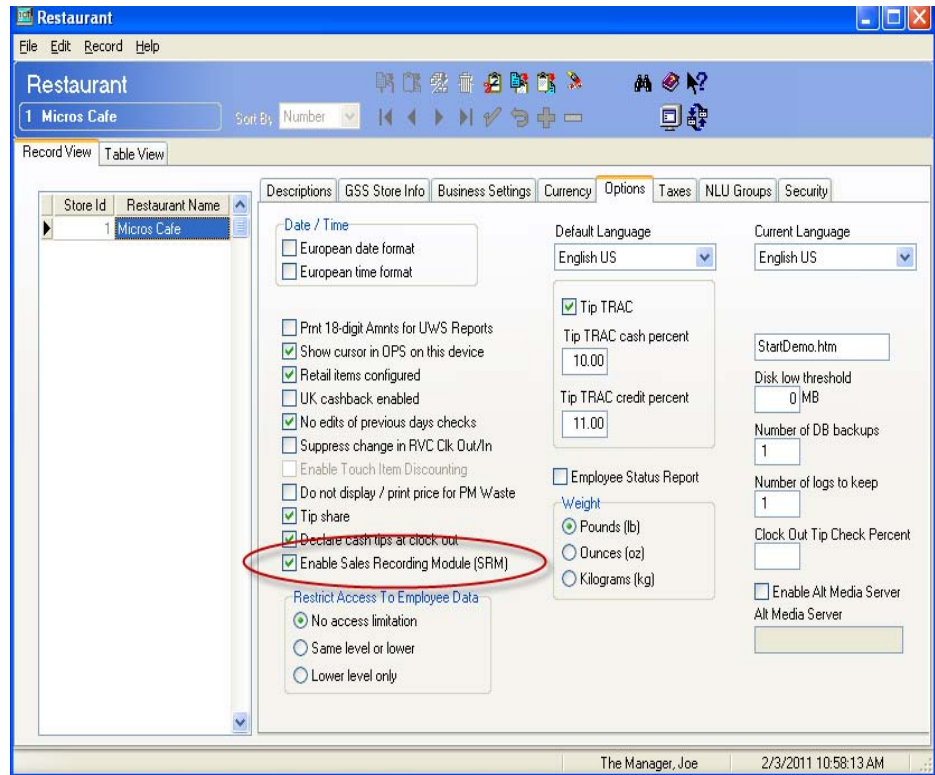
Configuration

1. Enable the New Sales Recording Module Option

Setup the recording of the references for the entire system.

Navigate to the *POS Configurator / System / Restaurant / Options*

- ◆ Enable Sales Recording Module (SRM)



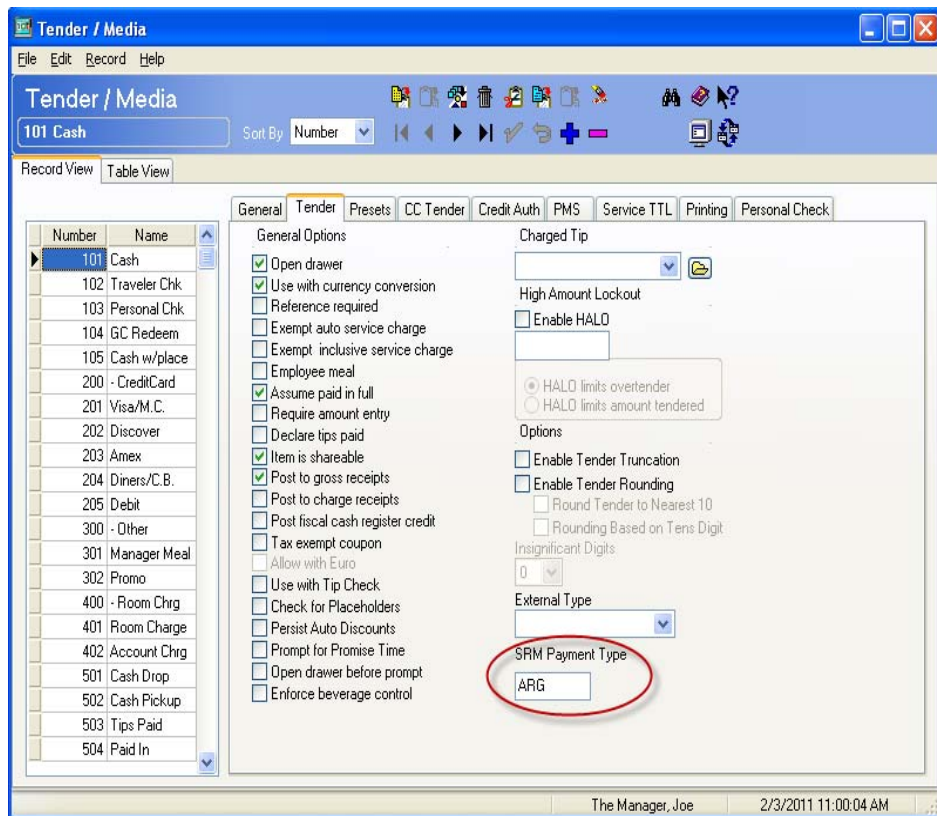
2. Define SRM Payment Type

For each tender type, a defined SRM payment type is required. Once a tender is accepted at the POS, the SRM device will record the configured code.

Navigate to the *POS Configurator* | *Sales* | *Tender/Media* | *Tender*

- ◆ Enter one of the following abbreviations for each tender:
 - ARG - Cash
 - AUT - Other
 - CRE - Credit
 - DEB - Debit

Note All abbreviation must be done in caps.
If a payment type is accepted at the POS and the SRM device does not recognize the tender, then the code 'SOB' will be recorded to the SRM device.
If multiple tenders are accepted at the POS, the SRM device will record the payments as a 'MIX'.



- ◆ All payment types must have the following options enabled:
 - Print Summary Total
 - Print Check Trailer
 - Print Check

- Print Memo Check
- ◆ All service total types must have the following options enabled:
 - Print Summary Totals
 - Print Check Trailer

Note *All other options at site discretion.*

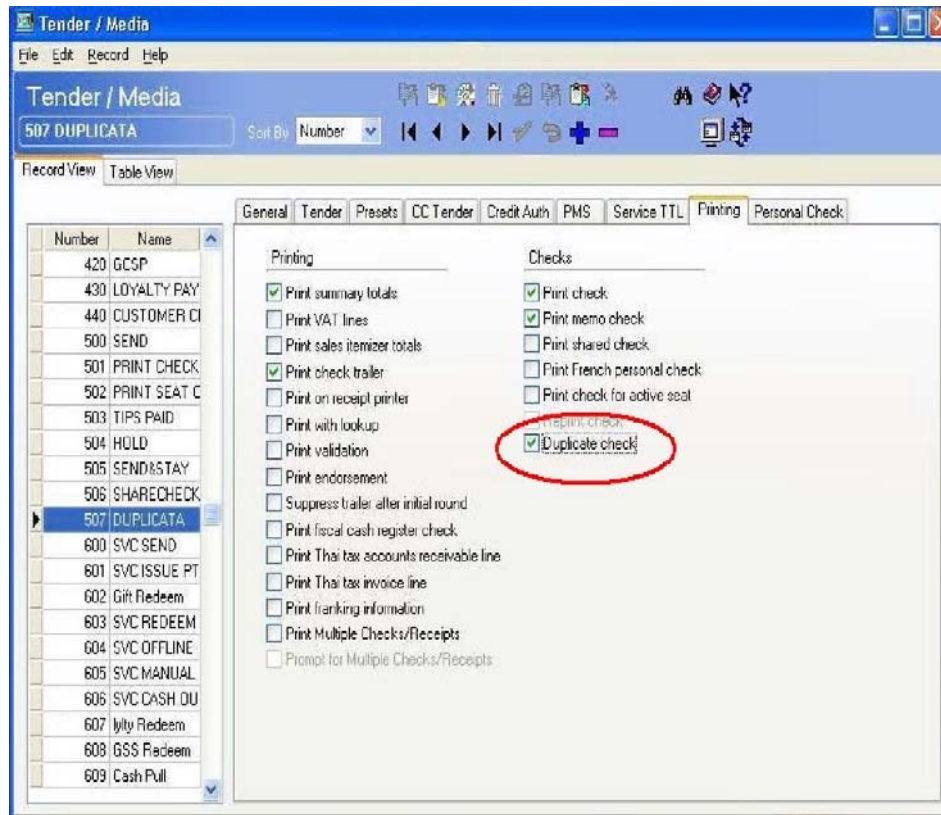
3. Duplicate Check

Create a new tender with the same properties as *Print Check*. Enable the *Duplicate check* option to allow the user to print checks that will not be turned over to the customer.

Navigate to the *POS Configurator / Sales / Tender/Media / Printing*

- ◆ Duplicate check

Note *Duplicate and Reprint check should not both be enabled.*



Navigate to the *POS Configurator / Devices / Touchscreen Designer*

Add the new *Duplicate* tender to touchscreens.

Category = Function: Tender/Media Number

Function = 'Duplicate'

Note *The Duplicate tender key is typically configured near all print check buttons.*

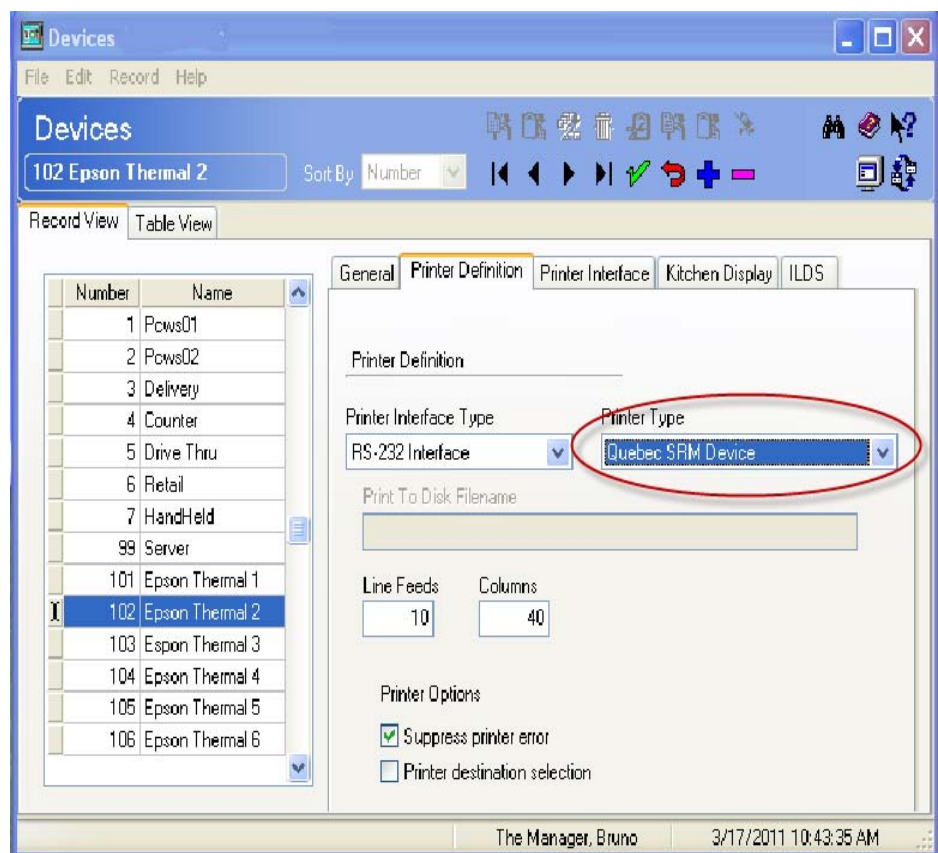
4. Define New Printer Type

For each User Workstation that has a Customer Receipt Printer, Guest Check Printer or Memo Check Printer the printer type must be configured to *Quebec SRM Device*.

Note *Backup printers configured for customer receipt printing are required to be SRM devices.*

Navigate to the *POS Configurator / Devices/ Device / Printer Definition / Printer Type*

- ◆ Quebec SRM Device



POS Configurator

Support Added for Protégé

CR ID #: N/A

SCR #: 38396

With this release, support for the Protégé has been added. The Protégé provides a color marketing display, and order confirmation device. The Protégé functions as an extension of the workstation in order to make ringing transactions more efficient. During a transaction, the operator will ring items into their workstation. The Protégé will display items as they are rung.

Notes *Only one of the following peripherals can be assigned to a workstation:*

1. Verifone MX870
2. Protégé
3. PINpad
4. ViVOpay

At this time the following clients support the Protégé:

1. Workstation 4LX
2. Workstation 5
3. Workstation 5A

The Win32 client will support the Protégé at a later time.

For configuration instructions refer to the *Protégé Setup Guide MD0003-166*.

Located on Member Services: *Product Support / MICROS Products / RES / Protégé*

OPS API

Support Added For Allowed Condiments From API

CR ID #: N/A

SCR #: 38410

With this release, support has been added for allowed condiments to be entered from the API correctly. Previously, the API treated all condiments as required condiments. This caused print groups to incorrectly print. Now the API correctly sorts condiments on remote printing chits.

What's Enhanced?

An enhancement is defined as a change made to improve or extend the functionality of the current 3700 POS application. To qualify as an enhancement, the change must satisfy the following criteria:

- ◆ The basic feature or functionality already exists in the previous release of the software.
- ◆ The change adds to or extends the current process. This differs from a revision (i.e., a bug fix) which corrects a problem not caught in the previous release of the software.

Enhancements Summarized

The table below summarizes the enhancements included in this version.

| Module | Enhancements | CR ID/ SCR | Page |
|----------------|--|------------|------|
| CC -TR Driver | Increase Number of Vouchers Printed | N/A/ 38423 | 15 |
| POS Operations | Support Added to Print Multiple Copies of a Memo Check | N/A/ 38661 | 15 |
| | Table Suggestion Process Will Now Change Screens if Table is on a Different Screen | N/A/ 38581 | 15 |
| | Dirty Icon Will Persist After Payment | N/A/ 38580 | 16 |
| | Dining Course Icons and Dining Course Colors Remain After Check Has Been Printed | N/A/ 38580 | 16 |

CC - Tender Request Driver

Increase Number of Vouchers Printed

CR ID #: N/A

SCR #: 38423

With this release, the Tender Request Credit Card Driver now allows up to four vouchers to be printed. Previously it could only print two vouchers.

Note

This is a requirement for Europay, MasterCard and VISA (EMV).



POS Operations

Support Added to Print Multiple Copies of a Memo Check

CR ID #: N/A

SCR #: 38661

With this release, support has been added for multiple copies of a memo check to print when the feature 'Print multiple checks/receipts' is enabled. Previously only guest checks and customer receipts would print multiple copies if this option was enabled.

Table Suggestion Process Will Now Change Screens if Table is on a Different Screen

CR ID #: N/A

SCR #: 38581

With this release, support has been added to allow the 'Table Suggestion Process' to change screens if the next table is on a different screen. This is conducive for a multiple floor establishment.

Dirty Icon Will Persist After Payment

CR ID #: N/A

SCR #: 38580

With this release, support has been added to allow the dirty icon to remain on the table object even if payment has been rendered.

Dining Course Icons and Dining Course Colors Remain After Check Has Been Printed

CR ID #: N/A

SCR #: 38580

With this release, support has been added to allow Dining Course Icons and Colors to remain on the table object after the guest check has been printed.

What's Revised?

A revision is defined as a correction made to any existing form, feature, or function currently resident in the RES Version 4.9 software. To qualify as a revision, the change must satisfy the following criteria:

- ◆ The basic form, feature, or functionality must be part of the previous version of the software.
- ◆ The change must replace the current item or remove it from the application.

Revisions Summarized

The table below summarizes the revisions included in this Maintenance Release.

| Module | Revision | CR ID/ SCR | Page |
|--------|---|-----------------|------|
| API | WebAPI Client Unable to Refresh Status When Sent to Front of House | N/A/ 29215 | 21 |
| | Transaction API Unable to Order Combo Side Items With Quantity Greater Than One | 30174/ 35671 | 21 |

| Module | Revision | CR ID/ SCR | Page |
|-------------------|---|-----------------------|------|
| POS Operations | Unable to Touch Refill Multiple Menu Items | 30148/ 38466 | 22 |
| | Returns Do Not Decrement Guest Count | 29732/ 38406 | 22 |
| | Changing Quantity of Menu Item Without a Build Screen Causes Return to RVC's Default Screen | 29610/ 38407 | 22 |
| | Delayed Orders Don't Remote Print if Original Client is Unavailable | N/A/ 38394 | 22 |
| | Hard Coded Credit Card Tender Causes 'Invalid Card Type' | 30266/ 338531 | 23 |
| | Void Close Check Causes a Service Totaled Check | 25866/ 35249 | 23 |
| | Cover Entry Prompted Twice | 29946/ 38398 | 23 |
| | Service Totaling Can Bypass Required Condiments | 29927/ 38399 | 23 |
| | Loss of Calibration in Check Detail if 'Display prefix on condiment's line' is Not Enabled | 29917- 1/ 38400 | 24 |
| | Incorrect Truncation of Service Charges and Discounts | N/A/ 38458 | 24 |
| | Updating Quality Produced a Void Validation Chit | 30170/ 38486 | 24 |
| | Build Screens Fail to Display When Default SLU are Linked to a Touchscreen | 30161/ 38479 | 24 |
| | Split Check Could Result in Require Condiments Failing to Prompt | 30203/ 38501 | 25 |

| Module | Revision | CR ID/ SCR | Page |
|------------------|--|-----------------------|-------------|
| | Using the Same Combo Group Multiple Times in Side Items May Cause Error | 30153/ 38468 | 25 |
| | Using Multiple Floor Plans Could Cause Key Redrawing Issues | N/A/ 38674 | 25 |
| | Quick Seat By Double Tap Feature Could Be Ignored | N/A/ 38580 | 25 |
| | Show Next Available Table Will Not Allow a Table Suggestion When Tables Are Unavailable | N/A/ 38580 | 26 |
| POS Configurator | Protégé Devices Unable to Have Duplicate IP Addresses | N/A/ 38540 | 26 |
| | Ordering Module Fails to Apply Automatic Discount When Using Quantity Keys | 29884/ 38403 | 26 |
| | Remote Order Device Printing To Include Print Group Sections, Print Group Sub-Sections and Support For POSAPI Printing | N/A/ 38395 | 26 |
| Desktop | Red Dot Causes User To Be Stranded On Secure Prompt | 29907/ 38401 | 28 |
| | Logging Off the MICROS Desktop Will Not Respond if Human Resources Forms are Minimized | 28988/ 38408 | 29 |

| Module | Revision | CR ID/ SCR | Page |
|-----------------------|--|-----------------|------|
| Printing | Item Discount Fails to Print to Journal When Done in a Separate Round | 29900/ 38402 | 29 |
| | Reprint Closed Check Doesn't Print Menu Items When 'Special on Demand' is Enabled | 30233/ 38518 | 29 |
| | Discounts and Inclusive Tax Resulted Incorrect Sales Tax Amount | 30123/ 38444 | 30 |
| Peripherals | Biometric Fingerprint Reader Could Cause Error on WS4 | 29792/ 38404 | 30 |
| | Combo Meals Last Default Condiment Appears On Rear Display | 29705/ 38079 | 30 |
| Reports | Void Reason Report Does Not Include Combo Meals Voided with Numeric Entry | 29778/ 38405 | 31 |
| Menu Board | Menu Boards May White Screen and Not Reconnect | 29858/ 38409 | 31 |
| CAL | BY DESIGN, MCRSCAL will Not Install Package if NAME in Setup.dat Does Not Match Folder | N/A/ 38411 | 31 |
| Enterprise Management | EM Concept Database Decimal Conversion Fails if Executed More Than Once | 30351/ 38546 | 32 |
| | Menu Item Price Sequence Number Expanded | 30245/ 38520 | 32 |
| Credit Card Settle | Add/Transfer Check Post Credit Card Detail Twice | 30522/ 38632 | 32 |
| Manager Procedures | Manager Procedures Fails to Show Accurately on WS5A CE | N/A/ 37752 | 33 |

| Module | Revision | CR ID/ SCR | Page |
|----------------------|--|-----------------|------|
| KDS - Controller | List Mode Fails to Display Numbered Ordered | N/A/ 38635 | 33 |
| KDS - Reports | Error May Occur When Menu Item Posting Overlaps Time Periods | 30109/ 38436 | 33 |
| ISL | SIM May Cause Condiments to Void Once Service Totaled | 30045/ 38386 | 34 |
| TMS - User Interface | Joint Table Function Doesn't Persist After Service Totaling | 30208/ 38503 | 34 |
| TMS - TMS Service | Table Suggestion Process Could Cause Error | 30626/ 38670 | 34 |

Revisions Detailed

API

WebAPI Client Unable to Refresh Status When Sent to Front of House

CR ID #: N/A

SCR #: 29215

Previously, when an order was rung at a web API client while the restaurant status was off, the API status would correctly report closed. When the restaurant was changed to Front of House and another web API order was rung, it would still report closed. This has been corrected.

Transaction API Unable to Order Combo Side Items With Quantity Greater Than One

CR ID #: 30174

SCR #: 35671

Previously when the user performed an order with a combo side item with a quantity greater than one through the transaction API, the order would only show a quantity of one. This has been corrected.

POS Operations

Unable to Touch Refill Multiple Menu Items

CR ID #: 30148

SCR #: 38466

Previously when the user performed a touch refill on multiple menu items on a previous round, only the first menu item highlighted would refill. This has been corrected.

Returns Do Not Decrement Guest Count

CR ID #: 29732

SCR #: 38406

Previously, when using the return key on a menu item that increments guest count, the guest count would not decrement. This has been corrected.

Changing Quantity of Menu Item Without a Build Screen Causes Return to RVC's Default Screen

CR ID #: 29610

SCR #: 38407

Previously, when using the quantity key in a COM database, operations would return to the RVC's default screen if the menu item did not have a build screen assigned to it. This has been corrected.

Delayed Orders Don't Remote Print if Original Client is Unavailable

CR ID #: N/A

SCR #: 38394

Previously, delayed orders would not fire to remote printers at the designated time if the client ordered from was unavailable. This has been corrected.

Hard Coded Credit Card Tender Causes 'Invalid Card Type'

CR ID #: 30266

SCR #: 38531

Previously, using a hard coded credit card tender key would result in an 'Invalid Card Type' when processing credit cards. This has been corrected.

Void Close Check Causes a Service Totaled Check

CR ID #: 25866

SCR #: 35249

Previously, when using the *Void Close Check* function during a transaction, the check would remain opened without menu items. This has been corrected.

Note *Now the Void Close Check function can only be used if a transaction has not been started.*

Cover Entry Prompted Twice

CR ID #: 29946

SCR #: 38398

Previously, when enabling the employee class options, 'Cover entry required' and 'Check ID entry required' operations would prompt for cover entry twice. This has been corrected.

Service Totaling Can Bypass Required Condiments

CR ID #: 29927

SCR #: 38399

Previously, it was possible to service total a check without fulfilling a menu items required condiments. This has been corrected.

Loss of Calibration in Check Detail if 'Display prefix on condiment's line' is Not Enabled

CR ID #: 29917-1

SCR #: 38400

Previously, in COM if the revenue center option 'Display prefix on condiment's line' was not enabled, the check detail could lose calibration after entering condiments to a menu item. This has been corrected.

Incorrect Truncation of Service Charges and Discounts

CR ID #: N/A

SCR #: 38458

Previously, on a zero decimal database, truncation of service charges and discounts will incorrectly round up. This has been corrected.

Updating Quality Produced a Void Validation Chit

CR ID #: 30170

SCR #: 38486

Previously, when the RVC Print Design option 'Print void / return validation chit' is enabled and the function 'Update Quantity' is performed on a pervious round check, a void validation chit would print. This has been corrected.

Build Screens Fail to Display When Default SLU are Linked to a Touchscreen

CR ID #: 30161

SCR #: 38479

Previously, in POS Operations, when using a display that allows menu items, build screens and SLU groups to appear on the same touchscreen, the result is that the build screens do not appear after the first menu item has been selected. This has been corrected.

Split Check Could Result in Require Condiments Failing to Prompt

CR ID #: 30203

SCR #: 38501

Previously, after splitting a check it was possible that menu items could fail to prompt for required condiments. This has been corrected.

Using the Same Combo Group Multiple Times in Side Items May Cause Error

CR ID #: 30153

SCR #: 38468

Previously, when a combo meal is configured to have the same combo group multiple times as a side item, it was possible that the items would fail to display or incorrectly add condiments. This has been corrected.

Using Multiple Floor Plans Could Cause Key Redrawing Issues

CR ID #: N/A

SCR #: 38674

Previously, when using multiple floor plans with touchscreens with multiple areas, it was possible for the POS Operations to redraw touchscreen keys randomly when changing screens. This has been corrected.

Quick Seat By Double Tap Feature Could Be Ignored

CR ID #: N/A

SCR #: 38580

Previously, when using the 'Quick Seat' feature it was possible that the double tap function could be ignored. This has been corrected.

Show Next Available Table Will Not Allow a Table Suggestion When Tables Are Unavailable

CR ID #: N/A

SCR #: 38580

Previously, the 'Show Next Available Table' would suggest a table that was set as 'unavailable'. This has been corrected.

POS Configurator

Protégé Devices Unable to Have Duplicate IP Addresses

CR ID #: N/A

SCR #: 38540

Previously when multiple Protégé devices were used in one establishment, the internal IP Address of each device would need to be unique. This has been corrected.

Ordering Module Fails to Apply Automatic Discount When Using Quantity Keys

CR ID #: 29884

SCR #: 38403

Previously, when using the quantity keys within the ordering module, the automatic discount would fail to apply. This has been corrected.

Remote Order Device Printing To Include Print Group Sections, Print Group Sub-Sections and Support For POSAPI Printing

CR ID #: N/A

SCR #: 38395

With this release, it is now possible to easily configure remote order device printing to include print group sections, print group sub-sections and support for POSAPI Printing.

Configuration

1. Print Group Sections

Navigate to the *POS Configurator / Sales / Print Groups*

- ◆ Show print group section

Enable this option to have the Print Group name print on Remote Order chits.

The Section label prints just one time above the first menu item of that print group exactly as listed in the print group name fields.

2. Print Group Sub Sections

Navigate to the *POS Configurator / Sales / Print Groups*

- ◆ Show print group sub section

Enable this option to have the Print Group name print on Remote Order chits.

The Sub Section label prints above each menu item with a number incrementing by 1 for each menu item in that print group. The incrementing number does not go up by more than one when items are ordered in quantity.

Note *This option is not supported to work with combo meals.*

3. Printing at POS only

Navigate to the *POS Configurator / Devices / User Workstation / Options / General*

- ◆ Order device printing at POS only

This option applies only to POSAPI and POSAPI Web Service clients, because they do not support SIM code directly.

Enable this option bit to cause Remote Order Device printing to be re-routed from a POSAPI client to a workstation that supports SIM/ISL files.

This option affects Remote Order Device printing only and has no effect on check printing.

4. Print Group Labels

Navigate to the *POS Configurator / Devices / Order Devices / Options / Sorting/Formatting*

- ◆ Show print group labels

Enable this option to have print group labels show on specific remote order printers.

The print group labels and options must also be configured in:

POS Configurator / Sales / Print Group

For more information on these features, please refer to RES 4.8 Maintenance Release 4 Readme First.

Desktop

Red Dot Causes User To Be Stranded On Secure Prompt

CR ID #: 29907

SCR #: 38401

It is possible for the user to receive a red dot within the secure prompt for MICROS Desktop. The red dot indicates that a connection to the database could not be established. A green dot indicates a connection has been made to the database. The red dot can appear when a hard shutdown of the server with Secure Desktop enabled has occurred. This could result in the MICROS Desktop security prompt loading prior to a connection to the database.

Previously if a user received a red dot, the user could be stranded on the secure prompt.

With this release, if the user finds themselves presented with a red dot, the user can select the enter key and the MICROS Desktop will try to reconnect to the database.

Logging Off the MICROS Desktop Will Not Respond if Human Resources Forms are Minimized

CR ID #: 28988

SCR #: 38408

Previously, it was possible for the MICROS Desktop to not respond and force closure. This could occur when the user logged off the MICROS Desktop while a Human Resources form was minimized. This has been corrected.

Printing

Item Discount Fails to Print to Journal When Done in a Separate Round

CR ID #: 29900

SCR #: 38402

Previously, when applying a discount to an item rung in a previous round, the discount would not print to the journal. This has been corrected.

Reprint Closed Check Doesn't Print Menu Items When 'Special on Demand' is Enabled

CR ID #: 30233

SCR #: 38518

Previously, when reprinting a closed check with the 'Special on demand' feature enabled, the menu items would not print. Only the subtotal, tax and payment would print. This has been corrected.

Discounts and Inclusive Tax Resulted Incorrect Sales Tax Amount

CR ID #: 30123

SCR #: 38444

Previously, when applying a discount to a menu item with inclusive tax configured, the sales tax would be incorrect. This has been corrected.

Peripherals

Biometric Fingerprint Reader Could Cause Error on WS4

CR ID #: 29792

SCR #: 38404

Previously, on WS4 clients CAL would exclude the DigitalPersona folder causing the error 'Unidentified USB Device' to occur. This happened due to the name value of the setup.dat not matching the name of the folder that CAL is trying to pass. This has been corrected.

Combo Meals Last Default Condiment Appears On Rear Display

CR ID #: 29705

SCR #: 38079

Previously, when fulfilling a combo meal placeholder, the last default condiment of the menu item would appear on the rear display. The menu item name should have appeared on the rear display. This has been corrected.

Reports

Void Reason Report Does Not Include Combo Meals Voided with Numeric Entry

CR ID #: 29778

SCR #: 38405

Previously, when voiding a combo meal with the numeric key pad greater than one, the void reason report would only show one combo as a void. This has been corrected.

Menu Board

Menu Boards May White Screen and Not Reconnect

CR ID #: 29858

SCR #: 38409

Previously, menu boards could white screen and not reconnect if the application received an IIS status code of 201, caused by networking issues. With this release, menu boards will reconnect after thirty seconds if such network issues occur.

CAL

BY DESIGN, McrsCAL will Not Install Package if NAME in Setup.dat Does Not Match Folder

CR ID #: N/A

SCR #: 38411

In RES 4.8 and later, if a CAL package's setup.dat does not have a PRODUCT value then McrsCAL compares the NAME string from the setup.dat with the package folder name. If these strings don't match, McrsCAL won't install the package. The work around for this is to make the folder name match the NAME in setup.dat.

Enterprise Management

EM Concept Database Decimal Conversion Fails if Executed More Than Once

CR ID #: 30351

SCR #: 38546

Previously, when converting the decimal place in a Enterprise Management (EM) concept database more than once the change will be ignored and remain the same. This has been corrected.

Note *Decimal places for all EM corporate databases must match the Master database.*

Menu Item Price Sequence Number Expanded

CR ID #: 30245

SCR #: 38520

Database updates would not work when a menu item price record had a mi_price_seq that exceeded 10,000,000. This has been corrected by changing the data type of columns involved from SEQ_NUM to SEQ_NUM_EX.

Credit Card Settle

Add/Transfer Check Post Credit Card Detail Twice

CR ID #: 30522

SCR #: 38632

Previously, when reopening a closed check that has a credit card payment posted and performing an add/transfer will cause a double charge to the cardholder if the check is closed. This has been corrected.

Manager Procedures

Manager Procedures Fails to Show Accurately on WS5A CE

CR ID #: N/A

SCR #: 37752

Previously, the WS5A CE client and any other device running a CE 6.0 R3 platform could fail to display all forms in manager procedures. The user would have to tap the screen to get all forms to display. This has been corrected.

KDS - Controller

List Mode Fails to Display Numbered Ordered

CR ID #: N/A

SCR #: 38635

Previously, when KDS is configured to use list mode, only the first chit would be numbered. This has been corrected.

KDS - Reports

Error May Occur When Menu Item Posting Overlaps Time Periods

CR ID #: 30109

SCR #: 38436

Previously, when menu items are being posted between multiple time periods on the same check, an error would occur. This affected KDS reports. This has been corrected.

ISL

SIM May Cause Condiments to Void Once Service Totaled

CR ID #: 30045

SCR #: 38386

Previously, when using SIM to add menu items to check detail, selecting service total could result in the added menu item and it's required condiments being voided. This has been corrected.

TMS - User Interface

Joint Table Function Doesn't Persist After Service Totaling

CR ID #: 30208

SCR #: 38503

Previously, when using the 'Join table' function, it was possible for tables to be un joined after service totaling. This could occur if one workstation was used to join the tables and another workstation was used to service total the check. This has been corrected.

TMS - TMS Service

Table Suggestion Process Could Cause Error

CR ID #: 30626

SCR #: 38670

Previously, when using the 'Table Suggestion Process' it was possible to encounter the error 'TMS request failed'. This could occur when the OPS clients would send requests to the TMS Service and the response time is too long. This has been corrected.

What's Known

What's known is defined as what needs to be completed for a successful version upgrade for certain modules.

What's Known Summarized

The table below summarizes the what's known included in this version.

| Module | Feature | SCR | Page |
|---------------------------|---------------------------------|---------------|------|
| Common - Database Manager | How to Update Concept Databases | N/A/ 38601 | 35 |

Common - Database Manager

How to Update Concept Databases

CR ID #: N/A

SCR #: 38213

With the release, a NovaFixRES_49_MR2.mcs file has been included in the Database\Data folder. This file is used to update Enterprise Management (EM) concept databases.

Steps to update concept databases:

1. Apply RES Version 4.9 Maintenance Release 2 to corporate.
2. Open Database Manager.
3. 'Select Database'
4. Select Concept from drop down.
5. Navigate to the NovaFixRES_49_MR2.mcs in the Database\Data folder.
6. Select 'Apply'

7. Repeat for all concepts.

Maintenance Release 1

What's New

A new feature is defined as one that provides capabilities that were not available in previous versions of the application.

New Features Summarized

The table below summarizes the new features included in this version.

| Module | Revision | CR ID/ SCR | Page |
|----------|---|---------------|------|
| Hardware | Scale Certification Updated to Include Workstation 5A | N/A/ 38213 | 37 |

New Features Detailed

Hardware

Scale Certification Updated to Include Workstation 5A

CR ID #: N/A

SCR #: 38213

With this release the ScaleAPI.dll has been updated to retrieve Scale Certification numbers to include the Workstation 5A.

What's Enhanced?

An enhancement is defined as a change made to improve or extend the functionality of the current 3700 POS application. To qualify as an enhancement, the change must satisfy the following criteria:

- ◆ The basic feature or functionality already exists in the previous release of the software.
- ◆ The change adds to or extends the current process. This differs from a revision (i.e., a bug fix) which corrects a problem not caught in the previous release of the software.

Enhancements Summarized

The table below summarizes the enhancements included in this version.

| Module | Enhancements | CR ID/ SCR | Page |
|----------------|---|---------------|------|
| RES DBS | Cardholder Name Unmasked | N/A/ 38308 | 39 |
| POS Operations | Remote Order Device Printing To Include Print Group Sections, Print Group Sub-Sections and Support For API POS Printing | N/A/ 38233 | 40 |
| ISL | SIM Support Added for Future Orders | N/A/ 38229 | 45 |
| | Barcode SIM Event | N/A/ 38230 | 45 |

RES DBS

Cardholder Name Unmasked

CR ID #: N/A

SCR #: 38308

With this release, it is now possible to print cardholder name on credit card vouchers. Previously, tenders that required credit card authorizations required the option bit 'Mask Cardholder Name' enabled for POS Operations to start. This has been amended.

Note *The Transaction Vault driver will still enforce masked cardholder name.*

Configuration

Disable the following option bits to print cardholder name on credit card vouchers:

Navigate to the *POS Configurator / Sales / Tender/Media / CC Tender*

- ◆ Mask Cardholder Name

Navigate to the *POS Configurator / Revenue Center / RVC Credit Cards / Printing*

- ◆ Do not print customer name on voucher

POS Operations

Remote Order Device Printing To Include Print Group Sections, Print Group Sub-Sections and Support For API POS Printing

CR ID #: N/A

SCR #: 38233

With this release remote order device printing will now support Print Group Sections, and Print Group Sub-Sections.

Print Group Sections will print prior to the start of a new set of menu items in the configured print group.

Sub-Sections will print prior to each item in the configured print group, starting at one.

The following table has been added to the database:

Print_grp_def.

A column, 'ob_rod_print_requires_POS' has also been added to the 'UWS_def' table. When editing this column to 'T' for the API workstation, it will cause that workstation to always print the remote order device output to a POS client.

Three new ISL events have been added to support this:

- ◆ Event print_detail_header
- ◆ Event print_detail
- ◆ Event print_detail_trailer

Using the print_detail event and adding at least 1 line will stop the native detail area output from displaying. Some developers will want to keep the native output, so they would only utilize the print_detail_header and/or print_detail_trailer events.

To support these printing events, we have added ISL variables:

@Print_Link - The print type that is the target of the print job

NOTE: Only the Order Device Output are currently valid.

@Print_Width - The width of the current print job

@Print_Lines - The number of ISL lines currently set to print

@Print_Text - The actual data to print. This is index [1..N] where N is

@Print_Lines

Note *Setting the value of @Print_Text[N+1] will effectively add a new line of text.*

@Dtl_Print_Grp[1..N] where N is @NUMDTLT

Note *This is intended to allow the condiments to be sorted by their Print Group.*

Example ISL Code using the new functionality (except the @Dtl_Print_Grp)

```
Var PL_CUST_RCPT : N2 = 1
```

```
Var PL_LCL_ORDR : N2 = 2
```

```
Var PL_JOURNAL : N2 = 3
```

```
Var PL_REPORT : N2 = 4
```

```
Var PL_GST_CHK : N2 = 5
```

```
Var PL_FCR : N2 = 6
```

```
Var PL_RMT_ORDR_1 : N2 = 9
```

```
Var PL_RMT_ORDR_32: N2 = 40
```

```
Event print_detail_header
```

```
Var line : a40
```

```
Var offset : N4
```

```
//Use the @Print_Link to control the formatting for the various print
devices
If ( @Print_Link >= PL_RMT_ORDR_1 and @Print_Link <=
PL_RMT_ORDR_32 )
//Use the @Print_Lines value to avoid writing over the contents of a
previous script
offset = @Print_Lines
//NOTE: You add a new print line by setting the contents of the next
available line.
if ( @Print_Width = 32 )
format line as @DWON, "Customer DtlHdr", @DWOFF
@Print_Text[offset+1] = line
else
format line as @DWON, " Customer DtlHdr ", @DWOFF
@Print_Text[offset+1] = line
endif
EndIf
EndEvent
Event print_detail
Var line : a40
Var offset : N4
Var sandwich_count : N4 = 0
Var i : N4
//Use the @Print_Link to control the formatting for the various print
devices
If ( @Print_Link >= PL_RMT_ORDR_1 and @Print_Link <=
PL_RMT_ORDR_32 )
//Use the @Print_Lines value to avoid writing over the contents of a
previous script
offset = @Print_Lines
```

//NOTE: You add a new print line by setting the contents of the next available line.

```
if ( @Print_Width = 32 )
format line as @REDON, @DWON, "Customer Items", @DWOFF,
@REDOFF
@Print_Text[@Print_Lines+1] = line
For i = 1 to @NUMDTLT
If @DTL_TYPE[i] = "M"
If NOT bit(@DTL_TTYPEDEF[i], 38) //MI_ITM_IS_BVG
sandwich_count = sandwich_count + 1
format line as @REDON, @DWON, "Sandwich #", sandwich_count,
@DWOFF, @REDOFF
@Print_Text[@Print_Lines+1] = line
format line as @DWON, @DTL_NAME[i], @DWOFF
@Print_Text[@Print_Lines+1] = line
EndIf
EndIf
EndFor
else
@Print_Text[offset+1] =
"1234567890123456789012345678901234567890"
format line as @REDON,
"1234567890123456789012345678901234567890", @REDOFF
@Print_Text[offset+2] = line
endif
EndIf
EndEvent
Event print_detail_trailer
Var line : a40
```

```
Var offset : N4
Var i : N4

//Use the @Print_Link to control the formatting for the various print
devices

If ( @Print_Link >= PL_RMT_ORDR_1 and @Print_Link <=
PL_RMT_ORDR_32 )

//Use the @Print_Lines value to avoid writing over the contents of a
previous script

offset = @Print_Lines

//NOTE: You add a new print line by setting the contents of the next
available line.

if ( @Print_Width = 32 )

format line as @REDON, @DWON, "Customer Drinks", @DWOFF,
@REDOFF

@Print_Text[@Print_Lines+1] = line

For i = 1 to @NUMDTLT
If @DTL_TYPE[i] = "M"
If bit(@DTL_TPEDEF[i], 38) //MI_ITM_IS_BVG
format line as @DWON, @DTL_NAME[i], @DWOFF
@Print_Text[@Print_Lines+1] = line
EndIf
EndIf
EndFor
else
format line as @REDON, @DWON, " Customer DtlTrl ", @DWOFF,
@REDOFF

@Print_Text[offset+1] = line

endif
EndIf
```

EndEvent

ISL

SIM Support Added for Future Orders

CR ID #: N/A

SCR #: 38229

With this release, support has been added to allow future orders and custom printing through SIM. CAutofire class has been altered to accommodate ISL scripts to process check related information during header and trailer printing events.

Barcode SIM Event

CR ID #: N/A

SCR #: 38230

With this release a new BARCODE event can be added to an ISL script to intercept a barcode scan. The event should review the @UserEntry data to determine if the barcode is one of the items that it should be handling. If it chooses to handle the barcode, it should set the new @BarCodeProcessed value to 1 so that native processing of the barcode does not proceed.

A new @BarCodeProcessed value will allow the ISL script to determine if a previous script has handled the barcode or to set the value if it was able to be processed. These changes will allow a site to use an ISL script to intercept barcode scans and initiate specific processing such as adding a menu item or discount to a check. The example code below will intercept the scan of a retail item and ring a Soda to the check instead.

EXAMPLE:

Event barcode

```
//If a previous script has processed this,
```

```
//then don't bother doing any more processing
```

```
If @BARCODEPROCESSED = "N"  
//If this is the barcode of a Mtn Dew  
If ( @UserEntry = "01208500" )  
//Load the keyboard macro to Ring in a Coke  
//NOTE: The object number of a Soda in the sample DB is 708107  
LoadKybdMacro key(3, 708107)  
@BARCODEPROCESSED = "Y"  
EndIf  
EndIf  
EndEvent
```

What's Revised?

A revision is defined as a correction made to any existing form, feature, or function currently resident in the RES Version 4.9 software. To qualify as a revision, the change must satisfy the following criteria:

- ◆ The basic form, feature, or functionality must be part of the previous version of the software.
- ◆ The change must replace the current item or remove it from the application.

Revisions Summarized

The table below summarizes the revisions included in this Maintenance Release.

| Module | Revision | CR ID/ SCR | Page |
|------------------------|---|-----------------|------|
| Guest Service Solution | Customer Search Results Have Changed | 29180/ 37866 | 50 |
| | 'Validate Block Numbers' Options Can Prompt That Address is Outside the Delivery Area | 29195/ 37867 | 51 |

| Module | Revision | CR ID/ SCR | Page |
|-------------------|--|-----------------|------|
| POS Operations | Automatic Discounts Applying Incorrect Amount | 29688/ 38194 | 51 |
| | Manually Enabled Automatic Discounts Incorrectly Applying | 29388/ 38231 | 51 |
| | Quantity Threshold and Multi-Item Price Threshold Discounts Incorrect with Award Quantity Greater Than One | N/A/ 38234 | 51 |
| | 'Error Connecting to Autosequence PC' When Running Autosequence Through Operations | 29046/ 37951 | 52 |
| | Tendering When Using Filter Seat Causes Breakpoint Error | 29501/ 37889 | 52 |
| | 'Unhandled Exception' When Using Filter Seat Function | 29708/ 38083 | 52 |
| | 'Magnetic Card Required' When Using an External Card Reader With 'Require Mag Card Emp ID' | 29748/ 38132 | 53 |
| | Tax Exempt Tendering While in Tray Function Does Not Post to Check | 29231/ 37650 | 53 |
| | Service Charges and Discounts Are Not Truncating | 29551/ 37922 | 53 |
| | 'Do Not Allow Menu Item Waste' Menu Item Class Incorrectly Updates Check Detail | 29722/ 38104 | 54 |
| | Recipe Mode May Cause 'Condiment Not Allowed' Error | 26551/ 35849 | 54 |
| | Service Totaling While Using Tray Total Function May Result in Negative Amount | N/A/ 38292 | 54 |

| Module | Revision | CR ID/ SCR | Page |
|--------------------|---|-----------------------|-------------|
| | Next Seat Incorrectly Tendering When Using Tray Total Function | N/A/ 38291 | 54 |
| KDS | Previous Round Touch Voids Do Not Appear on KDS | 29583/ 38232 | 55 |
| | Orders Sent to KDS Sometimes Appeared Incorrectly with Void Status | 27728/ 37401 | 55 |
| Database Setup | RES 4.9 MR 1 Databases Can Now Be Upgraded to RES 5.0 | N/A/ 38189 | 55 |
| Reports | Time Period Report Duplicates Order Type Information | 29113/ 37865 | 56 |
| Backoffice GUI | CM Verify Count Translation | N/A/ 37885 | 56 |
| Manager Procedures | Manager Procedures on an NT Client May Result in 'Unhandled Exception' | N/A/ 38295 | 56 |
| Database | MICROS.struct_xref_cfgTable May Cause Upgrade Problems | N/A/ 38298 | 57 |
| Menu Board | Menu Boards May White Screen | 29858/ 38316 | 57 |
| POS Configurator | Gray Out 'Table Object Alert Only When Seated' if 'Enable Table Object Alerts' is Off | N/A/ 37877 | 57 |
| | Unable to Delete Tables From RVC Table Seating | 29967/ 38333 | 58 |

| Module | Revision | CR ID/ SCR | Page |
|---------------|--|-----------------|------|
| Print Adapter | 'The Print Job ID is Already in Use' May Occur | N/A/ 38046 | 58 |
| | Changing Kitchen Themes May Cause Print Controller Issues on PCWS 2010 | 28786/ 37330 | 58 |
| Printing | IDN Printing Did Not Work For Euro and Other Symbols | N/A/ 38014 | 59 |
| PINpad.dll | POS Operations May Error With 'Unhandled Exception' on PINpad.dll | N/A/ 38319 | 59 |
| Translation | Japanese Translation Label Issues in POS Configurator | 29646/ 38023 | 59 |

Revisions Detailed

Guest Service Solutions

Customer Search Results Have Changed

CR ID #: 29180

SCR #: 37866

Previously when the user performed a search for a customer in the main dialog box, the search would include every name that came close in the database. For example, the search for Di resulted in the customer name Eddie first, rather than Dimitiri. This has been corrected.

'Validate Block Numbers' Options Can Prompt That Address is Outside the Delivery Area

CR ID #: 29195

SCR #: 37867

Prior to the release of RES Version 4.7, when the option bit 'Validate Block Number' was disabled the user was able to enter in a new customer through GSS by street name only. With the release of RES 4.7, the user receives a prompt that the address is outside the delivery area and is unable to enter in new customers by street name only. This has been corrected.

POS Operations

Automatic Discounts Applying Incorrect Amount

CR ID #: 29688

SCR #: 38194

Previously, when using quantity keys within a transaction and applying an automatic discount, it could result in an incorrect discount amount. This has been corrected.

Manually Enabled Automatic Discounts Incorrectly Applying

CR ID #: 29388

SCR #: 38231

Previously, discounts would not function properly if items were ordered with the quantity of more than one. This has been corrected.

Quantity Threshold and Multi-Item Price Threshold Discounts Incorrect with Award Quantity Greater Than One

CR ID #: N/A

SCR #: 38234

Previously, the Quantity Threshold and Multi-Item Price Threshold

discount engine rule types would incorrectly apply a discount when the Award Quantity was set to anything other than one. This has been corrected.

'Error Connecting to Autosequence PC' When Running Autosequence Through Operations

CR ID #: 29046

SCR #: 37951

Previously, when running an autosequence that takes longer than eighty nine seconds to complete through operations, the message 'Error Connecting to Autosequence PC' would appear. This has been corrected.

Tendering When Using Filter Seat Causes Breakpoint Error

CR ID #: 29501

SCR #: 37889

Previously, when tendering at least one seat in filter seat mode and clearing the functionality to service total, the following error could occur in certain circumstances.

'Unhandled Exception - BREAKPOINT'

This has been corrected.

'Unhandled Exception' When Using Filter Seat Function

CR ID #: 29708

SCR #: 38083

Previously, when using the filter seat function and voiding items from previous rounds it could cause an 'Unhandled Exception', in POS Operations. This has been corrected.

'Magnetic Card Required' When Using an External Card Reader With 'Require Mag Card Emp ID'

CR ID #: 29748

SCR #: 38132

Previously, when using an external card reader and enabling the employee class option 'Require Mag Card Emp ID', the error 'Magnetic Card Required' could appear in POS Operations. This has been corrected.

Tax Exempt Tendering While in Tray Function Does Not Post to Check

CR ID #: 29231

SCR #: 37650

Previously, when using a tender that had an exempt tax class and using the tray totals function to filter the check, it could result in the tender not posting to the check. Tray totals are not allowed with tax exempt tenders. That is by design. Now a proper message will pop up and let the user know they should use the split check function instead. The filter seat function will also work with tax exempt tenders.

Service Charges and Discounts Are Not Truncating

CR ID #: 29551

SCR #: 37922

Previously, service charges and discounts would not truncate correctly in POS Operations when enabled in POS Configurator. This has been corrected.

***'Do Not Allow Menu Item Waste' Menu Item Class
Incorrectly Updates Check Detail***

CR ID #: 29722

SCR #: 38104

Previously, in certain situations in Conversational Order Mode, non-wasteable items would display in check detail; this has been corrected.

Recipe Mode May Cause 'Condiment Not Allowed' Error

CR ID #: 26551

SCR #: 35849

Previously, while in recipe mode and selecting a menu item with a condiment set assigned to it, may result in 'Condiment Not Allowed' to appear when closing the recipe mode window. This has been corrected.

***Service Totaling While Using Tray Total Function May
Result in Negative Amount***

CR ID #: N/A

SCR #: 38292

Previously, when using tray totals and paying the check a 'Service 0.01-' message could display. This was due to a rounding error. It has been corrected.

***Next Seat Incorrectly Tendering When Using Tray Total
Function***

CR ID #: N/A

SCR #: 38291

Previously, when using the tray total function and the first seat has been tendered, the next seat would incorrectly tender. An undesired refund may occur to the first seat or the tender of the second seat may not apply to the check. This has been corrected.

KDS

Previous Round Touch Voids Do Not Appear on KDS

CR ID #: 29583

SCR #: 38232

Previously, when executing a touch void of a menu item from a previous round, the voided menu item did not appear on the KDS. This has been corrected.

Orders Sent to KDS Sometimes Appeared Incorrectly with Void Status

CR ID #: 27728

SCR #: 37401

Previously, when an order was sent to a KDS with DOM enabled, and paid, after selecting void twice, the order appeared as voided on the KDS. This has been corrected. Now the message 'Last item void not allowed' will display.

Database Setup

RES 4.9 MR 1 Databases Can Now Be Upgraded to RES 5.0

CR ID #: N/A

SCR #: 38189

Changes have been made to support upgrading a RES 4.9 MR 1 database directly to RES 5.0, with no intervening steps.

Reports

Time Period Report Duplicates Order Type Information

CR ID #: 29113

SCR #: 37865

With the release of RES Version 4.7, when the option bit is set to post previous rounds to the current order type and the user in operations changes order types, the Consolidate System Time Period Total Report will show sales for both order types. This has been corrected.

Backoffice GUI

CM Verify Count Translation

CR ID #: N/A

SCR #: 37885

Previously, if configured to translate to a language other than English, CM would encounter issues translating Verify Count within CM. This has been corrected.

Manager Procedures

Manager Procedures on an NT Client May Result in 'Unhandled Exception'

CR ID #: N/A

SCR #: 38295

Previously, running Manager Procedures from POS Operations on an NT client could cause an 'Unhandled Exception', in POS Operations. This has been corrected.

Database

MICROS.struct_xref_cfgTable May Cause Upgrade Problems

CR ID #: N/A

SCR #: 38298

Previously, with the release of RES 4.8 MR4, the table MICROS.struct_xref_cfg was incorrectly updated with the 'struct_seq' value of 111 instead of 112. This may cause upgraded problems. This has been corrected.

Menu Board

Menu Boards May White Screen

CR ID #: 29858

SCR #: 38316

Previously, menu boards could white screen and not reconnect if the application receives a IIS status code of 201. With this release, menu boards will reconnect itself after thirty seconds if white screen occurs.

POS Configurator

Gray Out 'Table Object Alert Only When Seated' if 'Enable Table Object Alerts' is Off

CR ID #: N/A

SCR #: 37877

Previously, if the option 'Enable table object alerts' is not selected, the option 'Table object alert only when seated' can be selected. With this release, when 'Enable table object alerts' is not selected the option 'Table object alert only when seated' will now be grayed out.

Configuration

Navigate to the *POS Configurator / Revenue Center / RVC Touchscreen / Tables*

- ◆ Enable table object alerts
- ◆ Table object alert only when seated

Unable to Delete Tables From RVC Table Seating

CR ID #: 29967

SCR #: 38333

Previously, the error message 'Unable to Delete Record' may occur when deleting a new or existing table from RVC Table Seating. This has been corrected.

Print Adaptor

'The Print Job ID is Already in Use' May Occur

CR ID #: N/A

SCR #: 38046

Previously, the error message 'The Print Job ID is Already in Use.' may occur when running the same report simultaneously on two different workstations. This has been corrected.

Changing Kitchen Themes May Cause Print Controller Issues on PCWS 2010

CR ID #: 28786

SCR #: 37330

Previously, when the PCWS 2010 was configured to be the KDS controller, the print controller would need to be reset if a transaction was being entered within twenty to thirty seconds of the kitchen theme being

changed. This has been corrected.

Printing

IDN Printing Did Not Work For Euro and Other Symbols

CR ID #: N/A

SCR #: 38014

Previously, the print translation mechanism did not work properly with IDN printers. This has been corrected. Now with the use of translation files the Euro symbol and other symbols can print to IDN printers for both Win32 and CE clients.

PINpad.dll

POS Operations May Error With 'Unhandled Exception' on PINpad.dll

CR ID #: N/A

SCR #: 38319

Previously, it was possible for POS Operations to error with 'Unhandled Exception' on PINpad.dll. This has been corrected.

Translation

Japanese Translation Label Issues in POS Configurator

CR ID #: 29646

SCR #: 38023

Previously, there were some options that would not show the Japanese translation in POS Configurator. This has been corrected.