



*Restaurant Enterprise Solution
Enterprise Management
Version 5.1
ReadMe First*

About This Document

ReadMe First is a quick reference guide that includes information about the new features, enhancements, and revisions added since the 5.0 release of the MICROS Enterprise Management (EM) software.

*******IMPORTANT*******

In EM Version 5.1, the following documentations and applications are no longer installed:

- Restaurant Enterprise Solution Enterprise Management Version 5.1 Installation and Setup Guide (Located on Member Services)
- Restaurant Enterprise Solution Enterprise Management Version 5.1 ReadMe First (Located on Member Services)
- Transaction Analyzer Classic is no longer installed with Central Setup.

February 4, 2013
Page 1 of 16

Within each section, product information is organized as follows:

- ◆ What's New
- ◆ What's Enhanced
- ◆ What's Revised

Each section begins with an introduction and includes a table that summarizes the features and functionality incorporated in this version of the software. The table provides hypertext links to supplementary text and graphics about the selected topics.

This release may contain some known issues that require configuration to prevent. These issues will contain the text “**KNOWN ISSUE**” before a description of the event in the Revisions section of this document. Please review this section carefully.

For installation and configuration instructions see the *[Enterprise Management 5.1 Installation and Setup Guide](#)*.

Declarations

Warranties

Although the best efforts are made to ensure that the information in this document is complete and correct, MICROS Systems, Inc. makes no warranty of any kind with regard to this material, including but not limited to the implied warranties of marketability and fitness for a particular purpose.

Information in this document is subject to change without notice.

No part of this document may be reproduced or transmitted in any form or by any means, electronic or mechanical, including photocopying, recording, or information recording and retrieval systems, for any purpose other than for personal use, without the express written permission of MICROS Systems, Inc.

MICROS Systems, Inc. shall not be liable for errors contained herein or for incidental or consequential damages in connection with the furnishing, performance, or use of this document.

Trademarks

FrameMaker is a registered trademark of Adobe Corporation.

Microsoft, Microsoft Excel, Win32, Windows, Windows[®]95, Windows 2000 (Win2K), and Windows NT are either registered trademarks or trademarks of Microsoft Corporation in the U.S. and/or other countries.

Visio is a registered trademark of Visio Corporation.

All other trademarks are the property of their respective owners.

General Information

Who Should Be Reading This Document

This document is intended for the following audiences:

- ◆ MICROS Installers/Programmers
- ◆ MICROS Dealers
- ◆ MICROS Customer Service
- ◆ MICROS Training Personnel
- ◆ MICROS Customer Database Administrator
- ◆ Customer MIS Personnel
- ◆ Customer Database Administrator

What the Reader Should Already Know

This document assumes that you have the following knowledge or expertise:

- ◆ Operational understanding of PCs
- ◆ Understanding of basic network concepts
- ◆ Experience with Windows Operating Systems.
- ◆ Basic knowledge of relational database concepts
- ◆ Understanding of hospitality terminology and concepts
- ◆ Understanding of MICROS 3700 POS system and Restaurant Enterprise Series products

**EM and RES
Version
Compatibility**

The *EM 5.1 Installation and Setup Guide* contains a detailed list of EM Versions installed at corporate and the corresponding version of RES required at both corporate and at EM stores (for all versions).

Please refer to this document for more information.

EM 5.1 (5.1.0.75)

RES Corporate Version	RES Store Versions
5.1 (5.1.0004.0938)	5.0 GR (5.0.0003.0416) & Higher 4.5 (4.5.7.1983) & Higher 4.3 HF2 (4.3.22.1824) & Higher

What's New

A new feature is defined as one that provides capabilities that were not available in previous versions of the application.

New Features Detailed

The table below summarizes the new feature included in this version.

Module	Feature	CR ID/SCR	Page
Inventory	Added Ability to Inactivate Inventory Items	N/A/38995	6

New Features Detailed

Inventory

Added Ability to Inactivate Inventory Items

CR ID#: N/A

SCR#: 38995

Support was added to inactivate inventory items for certain stores in an Enterprise. Locations in each concept use the same inventory items, and they can now disable certain items at specific locations so the items no longer show up on count sheets, purchase orders, or inventory reports.



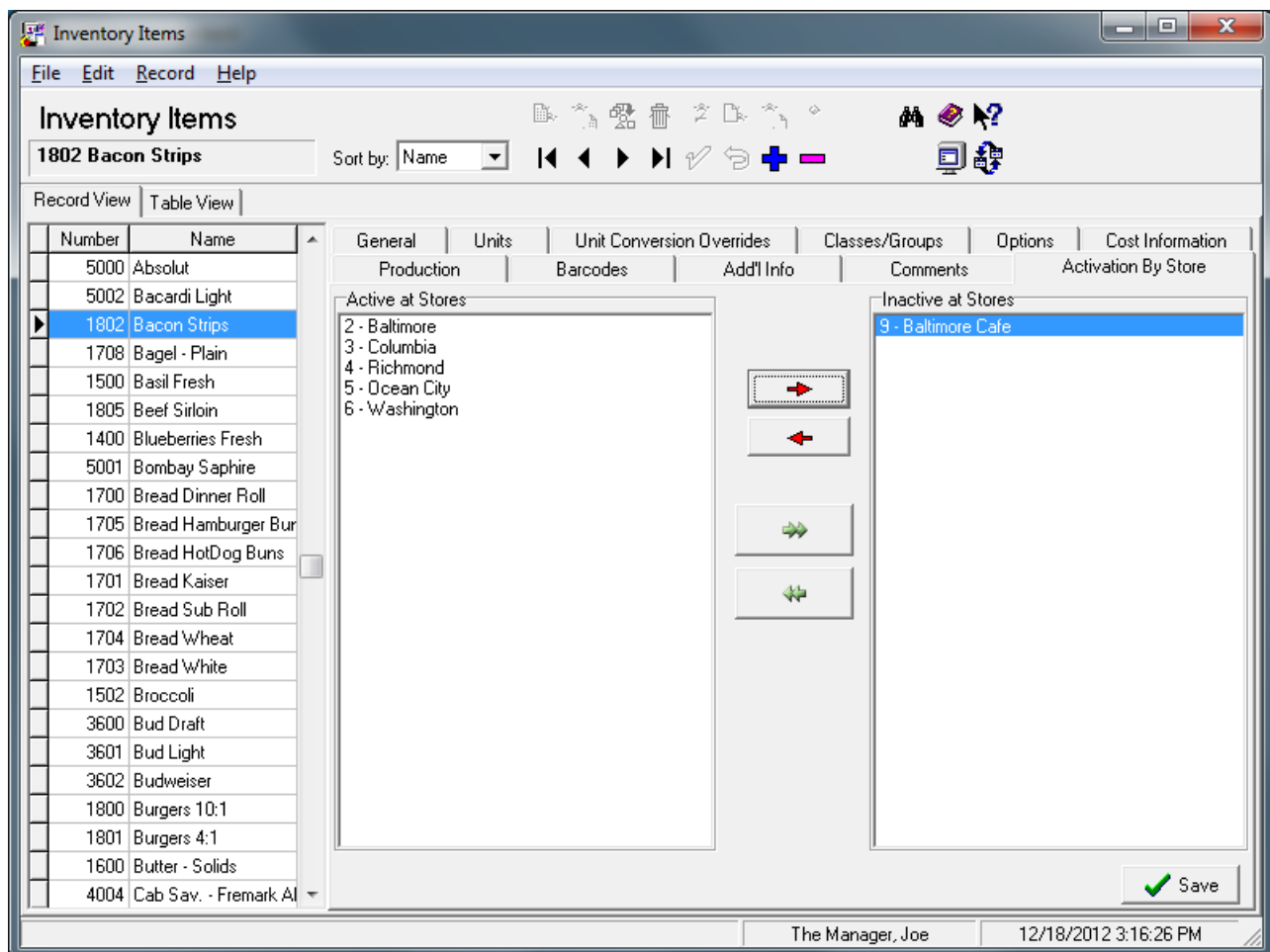
***Note:** The inventory must have a stock on hand quantity of zero to not show up on reports.*

Configuration

This feature is configurable at the Enterprise Management (EM) level for each store location.

1. Navigate to *PM / Setup / Inventory Items / Activation By Store*.

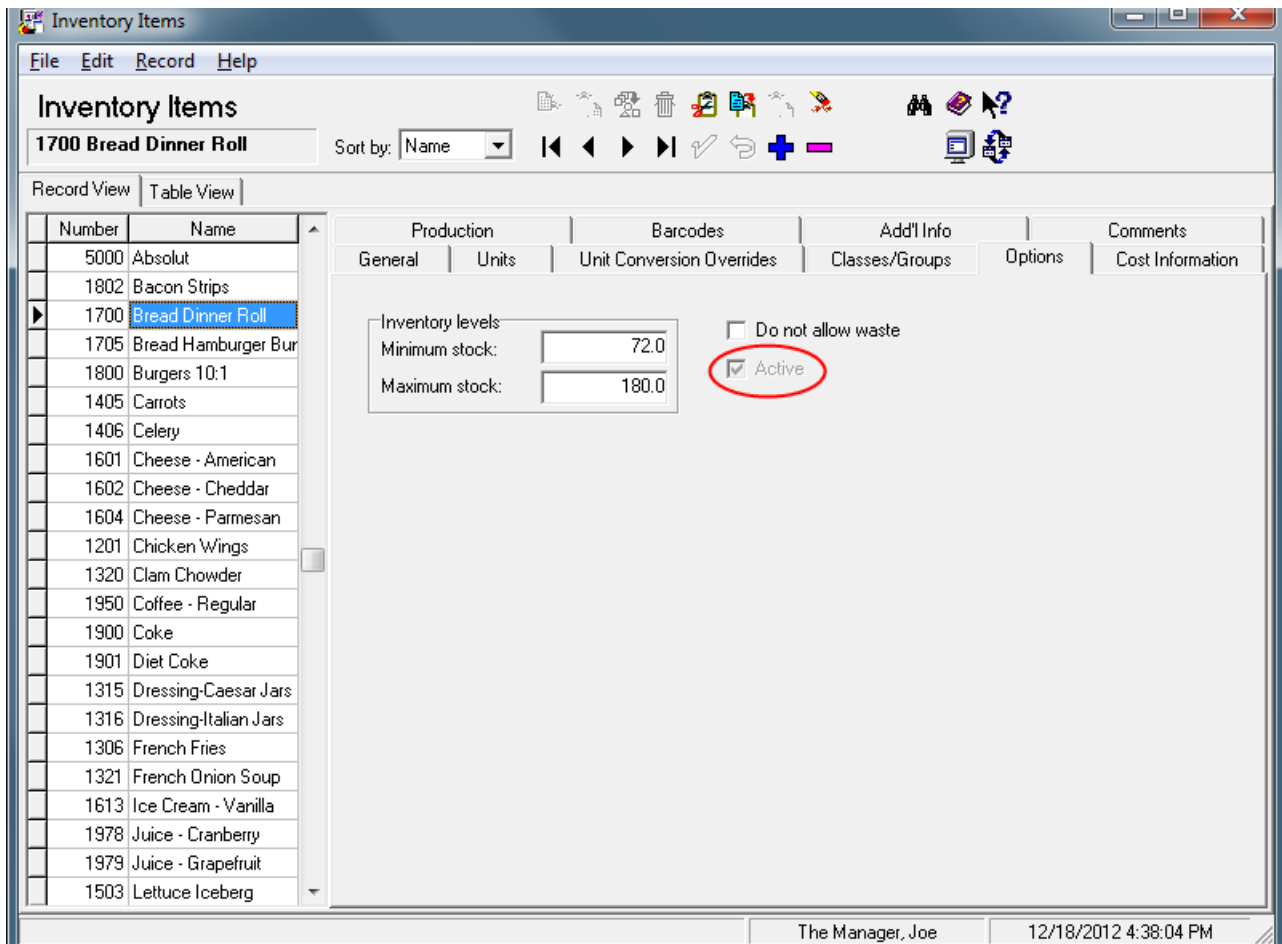
The following new screen will be displayed at the EM corporate level:



All stores default to Active at Stores. To set an inventory item inactive, highlight the item and then select the store that the item will be inactive for, and click on the red arrow to move it to the Inactive at Stores side.

2. Navigate to *PM / Setup / Inventory Items / Options*.

The new option bit 'Active' is only visible on an EM store, not at a non-EM store or at corporate. The option will be grayed out and can only be updated by changing the item at corporate.



What's Enhanced

An enhancement is defined as a change made to improve or extend the functionality of the current EM application. To qualify as an enhancement, the change must satisfy the following criteria:

- ◆ The basic feature or functionality already exists in the previous release of the software.
- ◆ The change adds to or extends the current process. This differs from a revision (i.e., a bug fix) which corrects a problem not caught in the previous release of the software.

Enhancements Summarized

The table below summarizes the enhancements included in this version.

Module	Enhancement	CR ID/ SCR	Page
RES Options Supported	POS Configurator Options Supported	N/A/ 39703	9

Enhancements Detailed

RES Options Supported

POS Configurator Options Supported

CR ID#: N/A

SCR#: 39703

The following new POS Configurator options are supported in this release of EM:

On the *Sales / Menu Item Classes / Print* tab:

- ◆ **Print NLU on Guest Check**
- ◆ **Print NLU on Remote Order Device**

On the *Sales / Combo Meals / General* tab:

- ◆ **Allow Un-Deal Auto Combo**

On the *Sales / Combo Meals / Revenue Center Options* tab:

- ◆ **Prorate Items by A-la Carte price**

On the *Sales / Discounts / Rule Setup* tab:

- ◆ **Group Combination on Guest Check**
- ◆ **Amount off of Trigger Total**

On the *Sales / Tender / Media / Service TTL* tab:

- ◆ **Default service total for timed orders**

On the *Employees / Employee Classes / Delivery* tab:

- ◆ **Make order transferable**

On the *Employees / Employee Classes / Cash Management / General Options* tab:

- ◆ **Free reason**

On the Revenue Center / *RVC Credit Cards* / *General* tab:

- ◆ **Initial Auth as Zero Dollar Account Verification**

On the Revenue Center / *RVC Discount* / *Service* tab:

- ◆ **Allow non-priced menu items as discount triggers**

On the Revenue Center / *RVC Transactions* / *Cashier* tab:

- ◆ **Persist most recent cashier**

On the Revenue Center / *RVC Transactions* / *Quick Service* tab:

- ◆ **Keep added combo sides after Un-Combo Auto Combo**

On the System / *Restaurant* / *Options* tab:

- ◆ **Grams**

On the System / *Restaurant* / *Security* tab:

- ◆ **Encrypted MSR Mode**

Cash Management Back Office Option Supported

On the *Configuration / Options / Others* tab:

- ◆ **Cash Management By Revenue Center**

Cash Management Back Office Totals Supported

Cash Management totals collection now includes the following column:

- ◆ **rvc_seq**

What's Revised

A revision is defined as a correction made to any existing form, feature, or function currently resident in the EM software. To qualify as a revision, the change must satisfy the following criteria:

- ◆ The basic form, feature, or functionality must be part of the previous version of the software.
- ◆ The change must replace the current item or remove it from the application.

Additionally, all reported issues that are deemed to be BY DESIGN are included in this section as well. These issues will contain the preface **BY DESIGN** in front of the feature name.

Revisions Summarized

The table below summarizes the revisions included in this release:

Module	Revision	CR ID/ SCR	Page
Deployment	Changes in Menu Item Sets do not Update in POS Operations Automatically	30469/ 38605	14
EM Configurator	Unable to Create Touchscreen Versions when EM Options Not Set	32449/ 39474	14
Product Interface/POS	Disable Some Store Options in EM Corporate Environment	29023/ 37494	15
Reports	EM Menu Item Consolidated Sales Reports Always Grouped by Major Group	33259/ 39779	15
	Previewing EM Consolidated Sales Reports Produces Error	32370/ 39435	16
Utilities / SetStore	POS Operations Did not Show New Touchscreen Keys When Setup to Non-EM Store was Used	25232/ 34388	16

**Revisions
Detailed**

Deployment

***Changes in Menu Item Sets do not Update in POS
Operations Automatically***

CR ID#: 30469

SCR ID #: 38605

Previously, when deploying a change to an existing Menu Item Set, the POS Operations client did not receive the update automatically. This has been corrected.

EM Configurator

***Unable to Create Touchscreen Versions when EM Options
Not Set***

CR ID#: 32449

SCR ID #: 39474

Previously, when creating a new touchscreen version (*POS Configurator / Devices / Touchscreen Designer*), if two or more keys did not have the options '**EM Lock Shape**' or '**EM Lock Attributes**' enabled, the new version could not be saved. This has been corrected.

Product Interface/POS

Disable Some Store Options in EM Corporate Environment

CR ID#: 29023

SCR ID #: 37494

The following fields can only be edited at the EM corporate level on the server and for the corporate record only. These fields are grayed out for the stores and on any clients.

- ◆ Autostart Level (*POS Configurator / System / Restaurant / Descriptions*)
- ◆ Number of DB backups (*POS Configurator / System / Restaurant / Options*)
- ◆ Number of logs to keep (*POS Configurator / System / Restaurant / Options*)

Reports

EM Menu Item Consolidated Sales Reports Always Grouped by Major Group

CR ID#: 33259

SCR ID #: 39779

Previously, the EM Menu Item Consolidated Sales (by RVC) and the EM Menu Item Consolidated Sales (by Store) reports (*Reports / Autosequences and Reports / Reports / Menu Item / EM MI Consolidated Sales (by RVC or by Store)*) always grouped by Major Group. This has been corrected.

Previewing EM Consolidated Sales Reports Produces Error

CR ID#: 32370

SCR ID #: 39435

Previously, when previewing the EM Consolidated Sales (by RVC) (*Reports / Autosequences and Reports / Reports / Sales / EM Consolidated Sales (by RVC)*) or EM Consolidated Sales (by Store) (*Reports / Autosequences and Reports / Reports / Sales / EM Consolidated Sales (by Store)*) report, an error occurred. This has been corrected.

Utilities / SetStore

POS Operations Did not Show New Touchscreen Keys When Setup to Non-EM Store was Used

CR ID#: 25232

SCR ID #: 34388

Previously, when using the SetStore.exe to 'Non-EM' a database, the touchscreens would not be set back to version 1. After setting the database to be 'Non-EM', when creating a new touchscreen button (*POS Configurator / Devices / Touchscreen Designer*) on a touchscreen that was not version 1, the new button would not show up in POS Operations. This has been corrected.



Note: *The EM 5.1 version of the SetStore.exe can be used on 4.x and 5.x databases.*
