



Restaurant Enterprise Solution
Enterprise Management
Version 4.11
ReadMe First

About This Document

ReadMe First is a quick reference guide that includes information about the new features, enhancements, and revisions added since the 4.10 release of the MICROS Enterprise Management (EM) software.

Within each section, product information is organized as follows:

- ◆ What's New
- ◆ What's Enhanced
- ◆ What's Revised

Each section begins with an introduction and includes a table that summarizes the features and functionality incorporated in this version of the software. The table provides hypertext links to supplementary text and graphics about the selected topics.

This release may contain some known issues. These issues will contain the text “**KNOWN ISSUE**” before a description of the event in the Revisions section of this document. Please review this section carefully.

For installation and configuration instructions see the *Enterprise Management 4.11 Installation and Configuration Guide, MD0009-074 Revision I*.

June 12, 2012

Page 1 of 12

Declarations

Warranties

Although the best efforts are made to ensure that the information in this document is complete and correct, MICROS Systems, Inc. makes no warranty of any kind with regard to this material, including but not limited to the implied warranties of marketability and fitness for a particular purpose.

Information in this document is subject to change without notice.

No part of this document may be reproduced or transmitted in any form or by any means, electronic or mechanical, including photocopying, recording, or information recording and retrieval systems, for any purpose other than for personal use, without the express written permission of MICROS Systems, Inc.

MICROS Systems, Inc. shall not be liable for errors contained herein or for incidental or consequential damages in connection with the furnishing, performance, or use of this document.

Trademarks

FrameMaker is a registered trademark of Adobe Corporation.

Microsoft, Microsoft Excel, Win32, Windows, Windows[®]95, Windows 2000 (Win2K), and Windows NT are either registered trademarks or trademarks of Microsoft Corporation in the U.S. and/or other countries.

Visio is a registered trademark of Visio Corporation.

All other trademarks are the property of their respective owners.

General Information

Who Should Be Reading This Document

This document is intended for the following audiences:

- ◆ MICROS Installers/Programmers
- ◆ MICROS Dealers
- ◆ MICROS Customer Service
- ◆ MICROS Training Personnel
- ◆ MICROS Customer Database Administrator
- ◆ Customer MIS Personnel
- ◆ Customer Database Administrator

What the Reader Should Already Know

This document assumes that you have the following knowledge or expertise:

- ◆ Operational understanding of PCs
- ◆ Understanding of basic network concepts
- ◆ Experience with Windows Operating Systems.
- ◆ Basic knowledge of relational database concepts
- ◆ Understanding of hospitality terminology and concepts
- ◆ Understanding of MICROS 3700 POS system and Restaurant Enterprise Series products

**EM and RES
Version
Compatibility**

The *EM 4.11 Installation and Configuration Guide* contains a detailed list of EM Versions installed at corporate and the corresponding version of RES required at both corporate and at EM stores (for all versions).

Please refer to this document for more information.

EM 4.11 (4.11.0.729)

RES Corporate Versions	RES Store Versions
4.11 (4.11.1.3618) or 4.11 MR1	5.0 GR (5.0.0003.0416) & Higher 4.1 HF2 (4.1.17.773) & Higher 4.3 HF1 (4.3.16.1526) & Higher 4.4 (4.4.16.1832) & Higher 3.2 SP7 HF6 (3.2.101.1895) - 3.2 SP7 HF7 (3.2.105.2286)

What's New

A new feature is defined as one that provides capabilities that were not available in previous versions of the application.

New Features Summarized

The table below summarizes the new features included in this version.

Module	Feature	Page
RES Support	RES 4.11 Support	5
	RES 4.11 MR1 Support	7
Known Issue	Cash Management Option not Supported	8

New Features Detailed

RES Support

RES 4.11 Support

The following new tables, options and stored procedures are supported in this release of EM:

On the *POS Configurator / Sales / Combo Meals / General* tab:

- ◆ **Allow Un-Deal Auto Combo**
 - ◆ combo_def.ob_allow_uncombo

On the *POS Configurator / Employees / Employee Classes / Cash Management / General Options* tab:

- ◆ **Free reason**
 - ◆ emp_class_def.ob_cm_free_reason

On the *POS Configurator / Revenue Center / RVC Credit Cards / General* tab:

- ◆ **Initial Auth as Zero Dollar Account Verification**
 - ◆ rvc_add_def.ob_init_auth_0_acct_verif

On the *POS Configurator / Revenue Center / RVC Discount / Service:*

- ◆ **Allow non-priced menu items as discount triggers**
 - ◆ rvc_def.ob_allow_0priced_mi_dsc_trggr

On the *POS Configurator / Revenue Center / RVC Transactions / Quick Service* tab:

- ◆ **Keep added combo sides after Un-Combo Auto Combo**
 - ◆ rvc_def.ob_keep_sides_after_uncombo

RES 4.11 MRI Support

The following new tables, options and stored procedures are supported in this release of EM:

On the *POS Configurator / Sales / Combo Meals / Revenue Center Options* tab:

- ◆ **Prorate Items by A-la Carte price**
 - ◆ rvc_add_def.ob_prorate_combo_items_prices

Note *The option **Prorate Items by A-la Carte prices** is located in the Enterprise Management Corporate Configurator (EMCC). This option will be visible with RES 4.11 installed at corporate. The option cannot be enabled until RES 4.11 MRI is installed at corporate.*

On the *POS Configurator / Sales / Discounts / Rule Setup* tab:

- ◆ **Group Combination on Guest Check**
 - ◆ dsvc_def.ob_grp_by_dsc_print_format

On the *POS Configurator / Revenue Center / RVC Transactions / Cashier* tab:

- ◆ **Persist most recent cashier**
 - ◆ rvc_def.ob_persist_prev_cashier

Known Issue

Cash Management Option not Supported

The new Cash Management option will not be supported with RES 4.11 installed at Corporate. To EM manage this option, RES 4.11 MR1 is required.

On the *Cash Management Back Office | Configuration | Options | Others* tab:

- ◆ **Cash Management By Revenue Center**
 - ◆ cm_option_def.cash management by revenue center

What's Enhanced

An enhancement is defined as a change made to improve or extend the functionality of the current EM application. To qualify as an enhancement, the change must satisfy the following criteria:

- ◆ The basic feature or functionality already exists in the previous release of the software.
- ◆ The change adds to or extends the current process. This differs from a revision (i.e., a bug fix) which corrects a problem not caught in the previous release of the software.

Enhancements Summarized

The table below summarizes the enhancements included in this version.

Module	Enhancement	CR ID/ SCR	Page
MECU	RES Version of Store now Displays in the Store Setup Form	N/A/ 34344	10

**Enhancements
Detailed**

MECU

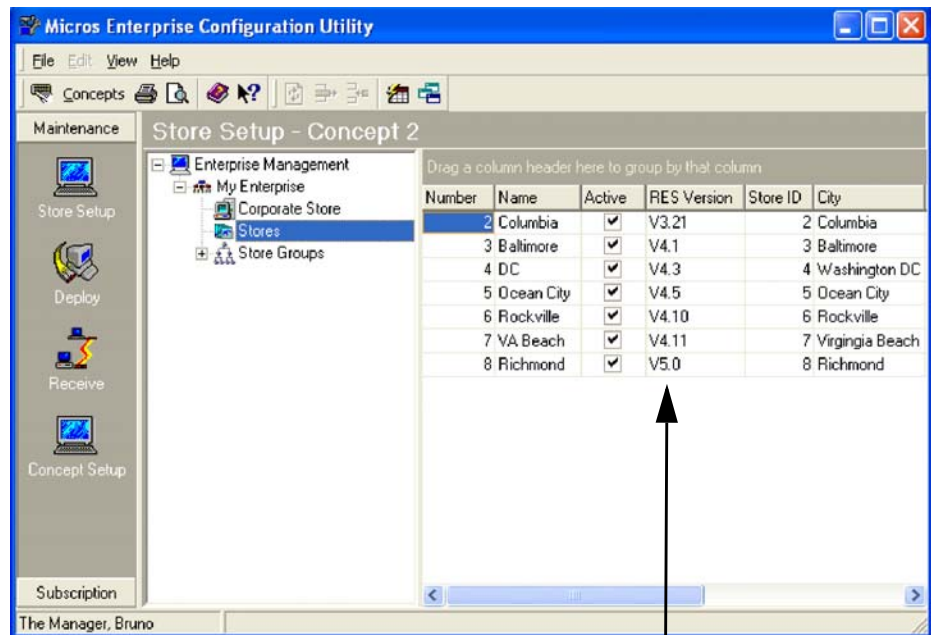
RES Version of Store now Displays in the Store Setup Form

CR ID #: N/A

SCR #: 34344

Previously, on the *MECU / Store Setup / Stores / Store Information / Products* tab, all supported RES versions were listed. The user would have to manually update this if a store was upgraded.

As of EM 4.11, the *Products* tab has been removed and now when *Store Setup / Stores* is selected, the actual RES Version of the store will be displayed. The version is from the *rest_status.micros_version_num* database table which has a row for each store. EM manages the *rest_status* database table and any changes to this table at the store will be deployed back to corporate, therefore the actual RES version of the store will be displayed.



RES Version of Stores

What's Revised

A revision is defined as a correction made to any existing form, feature, or function currently resident in the EM software. To qualify as a revision, the change must satisfy the following criteria:

- ◆ The basic form, feature, or functionality must be part of the previous version of the software.
- ◆ The change must replace the current item or remove it from the application.

Additionally, all reported issues that are deemed to be BY DESIGN are included in this section as well. These issues will contain the preface **BY DESIGN** in front of the feature name.

Revisions Summarized

The table below summarizes the revisions included in this version.

Module	Revision	CR ID/ SCR	Page
Deployment	Cannot Deploy from Corporate after Assigning Employee to Store	32587/ 39539	12
Mepi Rules	Recipes not Deployed when Assigned to Subscribed Menu Item	N/A/ 39479	12

**Revisions
Detailed**

Deployment

Cannot Deploy from Corporate after Assigning Employee to Store

CR ID #: 32587

SCR #: 39539

A RES 4.10/EM v4.10 corporate database deployment would fail after assigning an employee to a store. Deployment only failed for the stores that had an employee assigned to it. This has been corrected.

Mepi Rules

Recipes not Deployed when Assigned to Subscribed Menu Item

CR ID #: N/A

SCR #: 39479

There were two issues when deploying Product Management configuration to the stores.

If a recipe was linked to a menu item that was already subscribed to the store, the recipe and all configuration for the recipe would not be deployed.

Also, if a recipe was linked to an inventory item, the recipe and all configuration for the recipe would not be deployed. Both scenarios would cause Receive to fail at the store. These have been corrected.