

Oracle® Hospitality Suite8

Install Shield

Release 8.10.0.0

E72939-01

June 2016

Copyright © 1987, 2016, Oracle and/or its affiliates. All rights reserved.

This software and related documentation are provided under a license agreement containing restrictions on use and disclosure and are protected by intellectual property laws. Except as expressly permitted in your license agreement or allowed by law, you may not use, copy, reproduce, translate, broadcast, modify, license, transmit, distribute, exhibit, perform, publish, or display any part, in any form, or by any means. Reverse engineering, disassembly, or decompilation of this software, unless required by law for interoperability, is prohibited.

The information contained herein is subject to change without notice and is not warranted to be error-free. If you find any errors, please report them to us in writing.

If this software or related documentation is delivered to the U.S. Government or anyone licensing it on behalf of the U.S. Government, then the following notice is applicable:

U.S. GOVERNMENT END USERS: Oracle programs, including any operating system, integrated software, any programs installed on the hardware, and/or documentation, delivered to U.S. Government end users are "commercial computer software" pursuant to the applicable Federal Acquisition Regulation and agency-specific supplemental regulations. As such, use, duplication, disclosure, modification, and adaptation of the programs, including any operating system, integrated software, any programs installed on the hardware, and/or documentation, shall be subject to license terms and license restrictions applicable to the programs. No other rights are granted to the U.S. Government.

This software or hardware is developed for general use in a variety of information management applications. It is not developed or intended for use in any inherently dangerous applications, including applications that may create a risk of personal injury. If you use this software or hardware in dangerous applications, then you shall be responsible to take all appropriate fail-safe, backup, redundancy, and other measures to ensure its safe use. Oracle Corporation and its affiliates disclaim any liability for any damages caused by use of this software or hardware in dangerous applications.

Oracle and Java are registered trademarks of Oracle and/or its affiliates. Other names may be trademarks of their respective owners.

Intel and Intel Xeon are trademarks or registered trademarks of Intel Corporation. All SPARC trademarks are used under license and are trademarks or registered trademarks of SPARC International, Inc. AMD, Opteron, the AMD logo, and the AMD Opteron logo are trademarks or registered trademarks of Advanced Micro Devices. UNIX is a registered trademark of The Open Group.

This software or hardware and documentation may provide access to or information on content, products, and services from third parties. Oracle Corporation and its affiliates are not responsible for and expressly disclaim all warranties of any kind with respect to third-party content, products, and services. Oracle Corporation and its affiliates will not be responsible for any loss, costs, or damages incurred due to your access to or use of third-party content, products, or services.

Contents

Preface	5
Audience	5
Customer Support	5
Documentation	5
Revision History	5
1 Suite8 Install Shield	7
Introduction	7
Microsoft Windows7	7
Microsoft Windows 8.1	7
Microsoft Windows 10	7
Microsoft Windows Server 2012 R2	7
Oracle Client Version	7
2 Suite8 Setup	9
Prerequisites	9
Preparing the Installation	9
Verify Event Logs	9
Configure Regional settings	9
Enable the .NET Framework 3.5 (2.0) feature (Windows 7)	10
Enable the .NET Framework 4.x, 3.5 (2.0) feature (Windows 8.1)	11
Enable the .NET Framework 4.x, 3.5 (2.0) feature (Windows Server 2012 R1/R2)	12
Disable the Firewall	16
Disable User Access Control	17
Getting Started	18
Client/Workstation Installation	21
Oracle Server, Oracle Instance and Version Control Installation	21
Oracle Hospitality Suite8 Property Web Connect	21
XML Interface	21
Crystal Reports 12 Runtime	21
Oracle Server Maintenance Jobs Installation	21
3 Installation of Suite8 Client	22
Enable the Firewall	34
Enable User Access Control	35
Change the User Access Rights for the Oracle Client/Suite8 Client files	36
4 Installation of the Suite8 Database	37
Activation of Oracle Wallet	59
Oracle Database Control	60
Enable the Firewall	62
Enable User Access Control	64
Change the User Access Rights for the Oracle Database files	64
How to import SUITE8 Data export into Oracle Database with Multilingual Support (UNICODE)	65
Change System Environment for Oracle Database (64-bit) & Oracle Client (32-bit) ..	67

Using Suite8 Database Server Shares.....	69
5 Install Oracle Server Maintenance Jobs.....	73
Verify Scheduled Tasks.....	83
6 Appendix (Tips&Tricks, Q&A, Issues...)	84

Preface

Audience

The installation guide for the Suite8 Install Shield is intended for system administrators and support familiar with Suite8.

Customer Support

To contact Oracle Customer Support, access My Oracle Support at the following URL:

<https://support.oracle.com>

When contacting Customer Support, please provide the following:

- Product version and program/module name
- Functional and technical description of the problem (include business impact)
- Detailed step-by-step instructions to re-create
- Exact error message received
- Screen shots of each step you take

Documentation

Oracle Hospitality product documentation is available on the Oracle Help Center at

<http://docs.oracle.com>

Revision History

Date	Description of Change
March 2010	<ul style="list-style-type: none">• 8.8.2.0 - New
December 2010	<ul style="list-style-type: none">• 8.8.4.1 - Added Oracle 11gR2
September 2011	<ul style="list-style-type: none">• 8.9.0.3 - Updated for new install shield and added training version short cut start parameter
October 2012	<ul style="list-style-type: none">• 8.9.2.3 - Updated for 8.9.2.3
February 2013	<ul style="list-style-type: none">• 8.9.3.0 - Updated for 8.9.3.0• Suite8 Client Setup updated• Oracle DB Setup updated
July 2013	<ul style="list-style-type: none">• 8.9.4.0 - Updated for 8.9.4.0• Suite8 Version Control added
July 2013	<ul style="list-style-type: none">• 8.9.4.0 - Update to Suite8 homepage system requirements
January 2014	<ul style="list-style-type: none">• 8.9.4.3 - Updated for 8.9.4.3• Windows 8 Support added• Oracle DB Setup updated
March 2014	<ul style="list-style-type: none">• 8.9.5.0 - Updated for 8.9.5.0• Oracle DB Setup updated• Suite8 Version Control updated

July 2014	<ul style="list-style-type: none">• 8.9.5.1 - Update for 8.9.5.1• Added Oracle 12cR1• Added Windows Server 2012
November 2014	<ul style="list-style-type: none">• 8.9.5.3 - Update for 8.9.5.3• Added Oracle Policies
January 2015	<ul style="list-style-type: none">• 8.9.6.0 - Update for 8.9.6.0• Added UNICODE Support
June 2016	<ul style="list-style-type: none">• 8.10.0.0 – Update for 8.10.0.0

1 Suite8 Install Shield

Introduction

The Suite8 installation shield offers a complete installation of Oracle Schema with Oracle11gR2/Oracle12cR1 Database, Oracle Hospitality Suite8 Property with Oracle 11gR2/Oracle 12cR1 Client (32-bit) as well as Suite8 WebConnect, XML Interface, Oracle SQL Developer, Crystal Reports 12 Runtime and Oracle Database Maintenance.

When choosing Oracle Server, Instance and Schema installation, the install shield takes care of all Oracle settings for the Server and prepares the installation of the correct version 8, please make sure to have the Oracle DVD ready or download the Oracle Installation files from edelivery.oracle.com. The Install Shield supports different RAM Sizes. It reads real memory size, therefore no additional questions about memory are being asked with the install shield for version 8.10.0.0.

Microsoft Windows7

Microsoft Windows 7 certification starts with 'Oracle Database 11gR2 (11.2.0.1)'. That means that the Oracle Database 11gR2 is the first Oracle Database product certified and supported to install and run on **Microsoft Windows 7**.

Microsoft Windows 8.1

Microsoft Windows 8.1 certification starts with Oracle Database 11gR2 (11.2.0.4) and Oracle Database 12cR1 (12.1.0.1/12.1.0.2).

We recommend using Oracle Database Version 12cR1 (12.1.0.2) for Microsoft Windows 8.1.

Microsoft Windows 10

Microsoft Windows 10 certification starts with Oracle Database 12cR1 (12.1.0.2).

Microsoft Windows Server 2012 R2

Microsoft Windows Server 2012 R2 certification starts with 'Oracle Database 11gR2 (11.2.0.4) and Oracle Database 12cR1 (12.1.0.2).

We recommend using Oracle Database Version 12cR1 (12.1.0.2) for Microsoft Windows Server 2012 R2.

Oracle Client Version

The Oracle Client versions 11gR2 (11.2.0.4, 32-bit) and 12cR1 (12.1.0.2, 32-bit) are compatible with Windows 7, Windows 8.1, Windows Server 2008 R2 and Windows Server 2012 R2.

For Windows 10 only Oracle Client version 12cR1 (12.1.0.2, 32-bit) is compatible!

Minimum Product Version to use with Oracle Client 12cR1 for POS8 is 8.9.6.3 (POS Release 8.194.1), and for IFC8 8.3.0 - Otherwise use the Oracle Client Version 11gR2 (11.2.0.4).

Note: Please refer to the Certifications page on [My Oracle Support](#).

2 Suite8 Setup

Prerequisites

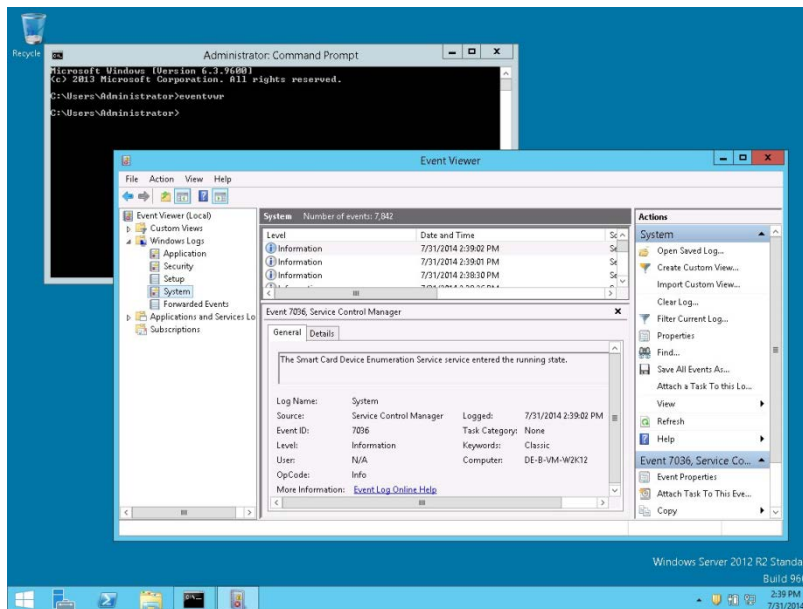
Please refer to the **Suite8 Software Description** and **Suite8 System Requirements** available on the Oracle Help Center at <http://docs.oracle.com>.

Preparing the Installation

The following steps are required for the Oracle Client/Database installation:

Verify Event Logs

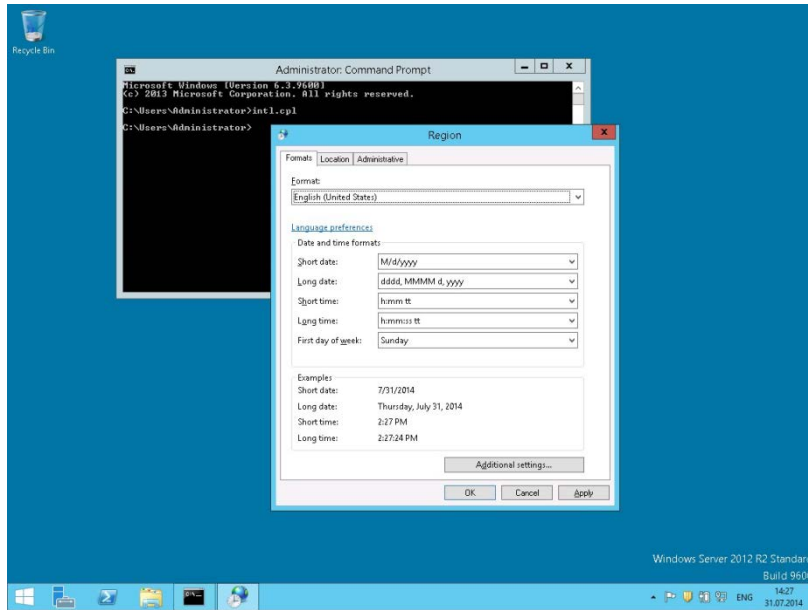
1. Verify that there are no errors in the event log file. The Oracle installation should not be started if there are system errors listed in the event log which could stop Oracle running.
2. Open a command prompt, use the option **Run as administrator** and type **eventvwr.msc** to launch the Event Viewer utility.



Configure Regional settings

The Windows regional settings should be configured using English (United States).

1. Open a command prompt, using the option **Run as administrator** and type **intl.cpl** to launch the Region utility.
2. Select the **Formats** tab. In the **Format** option select **English (United States)**. Click **OK** to save changes.



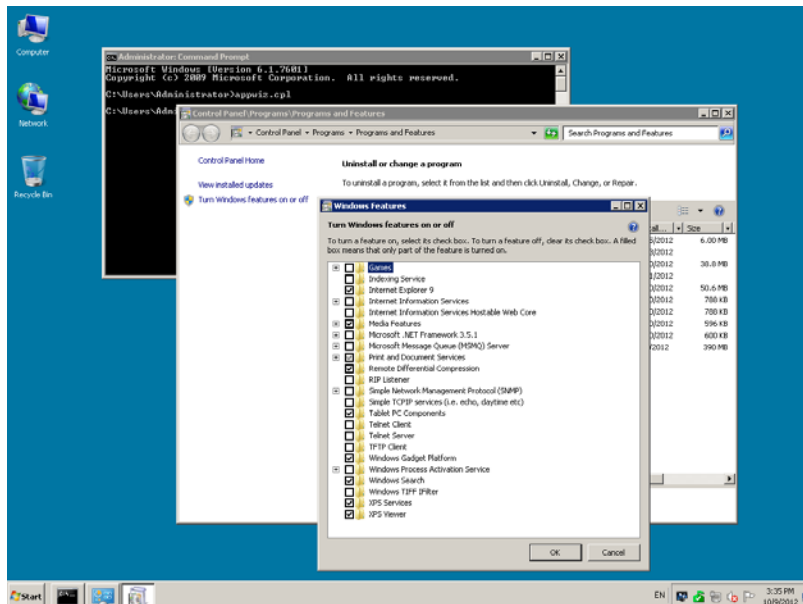
Note: The language must be set to English (United States) for the Oracle Client installation. When the installation has been completed this should be changed back to the local language.



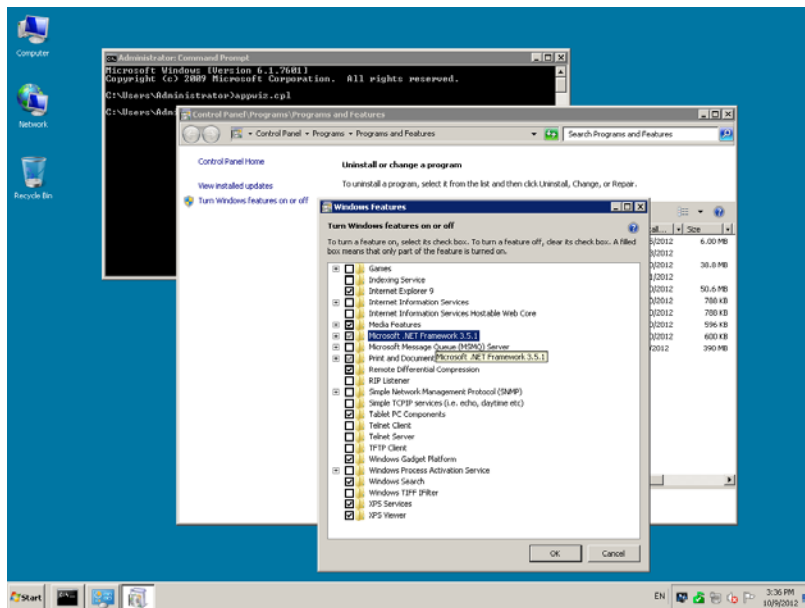
Enable the .NET Framework 3.5 (2.0) feature (Windows 7)

You can enable the .NET Framework 2.0/3.0/3.5 through the Control Panel.

1. Open a command prompt, using the option **Run as administrator** and type **appwiz.cpl** to launch the Programs and Features utility.
2. In the **Programs and Features** panel, select the option **Turn Windows features on or off** (upper left hand corner of the window).



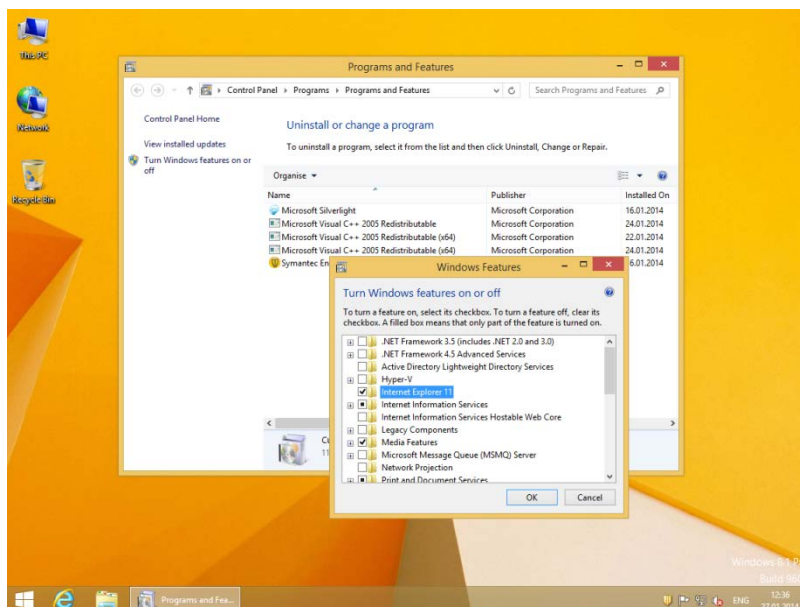
3. Select the feature **.NET Framework 3.5 (includes .NET 2.0 and 3.0)** in the **Windows Features** window and click **OK** to save the changes.



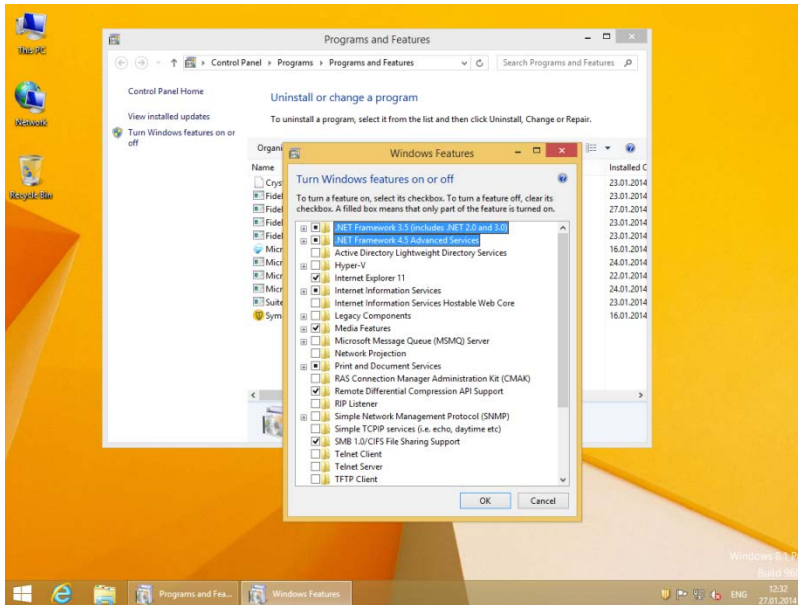
Enable the .NET Framework 4.x, 3.5 (2.0) feature (Windows 8.1)

You can enable the .NET Framework 2.0/3.0/3.5/4.0/4.5 through the Start screen.

1. Open the Start screen and search for **Programs and Features**. Launch the Programs and Features utility.
2. In the **Programs and Features** panel, select the option **Turn Windows features on or off** (upper left hand corner of the window).



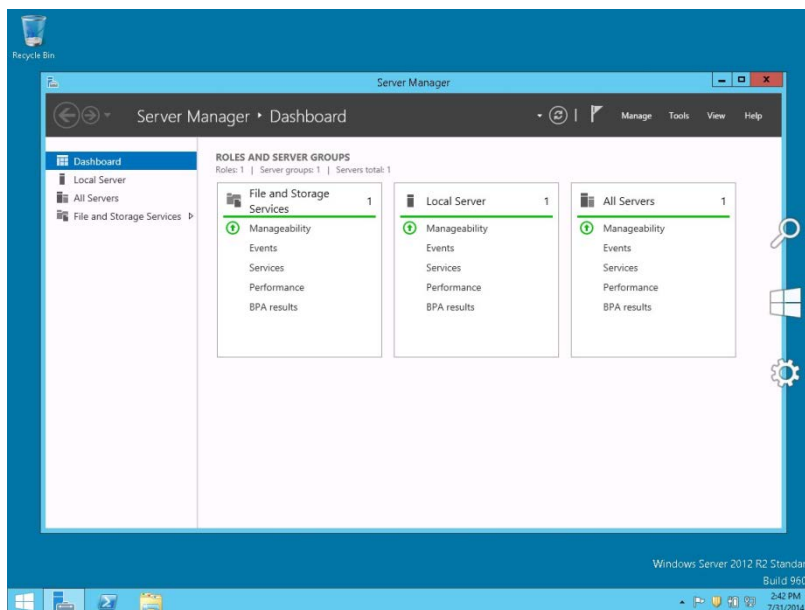
3. Select the feature **.NET Framework 3.5 (includes .NET 2.0 and 3.0)** and **.NET Framework 4.5** in the **Windows Features** window and click **OK** to save the changes.



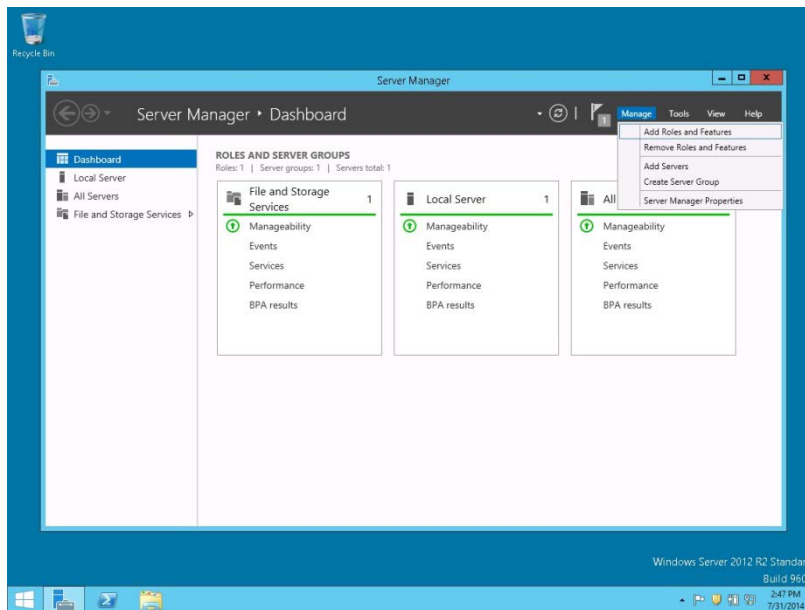
Enable the .NET Framework 4.x, 3.5 (2.0) feature (Windows Server 2012 R1/R2)

You can enable the .NET Framework 2.0/3.0/3.5/4.0/4.5 through the Start screen.

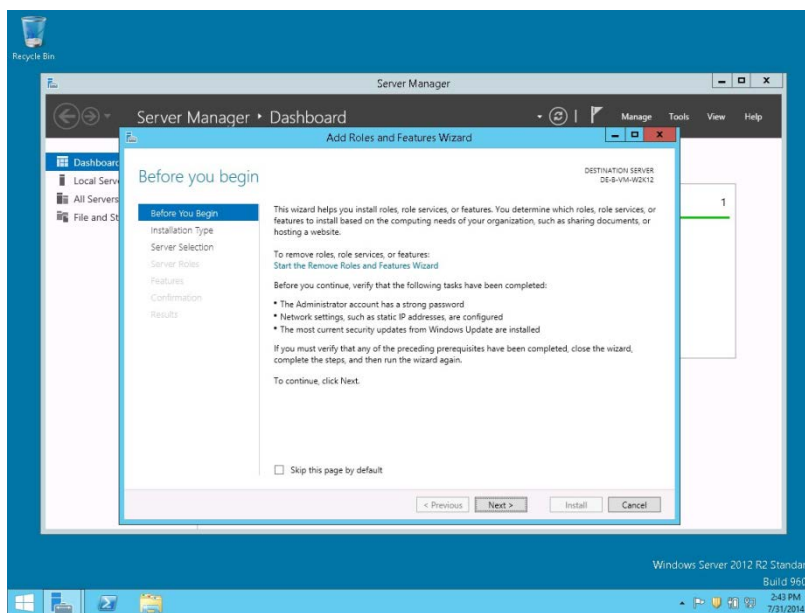
1. Open the Start screen and search for **Server Manager**. Launch the Program.



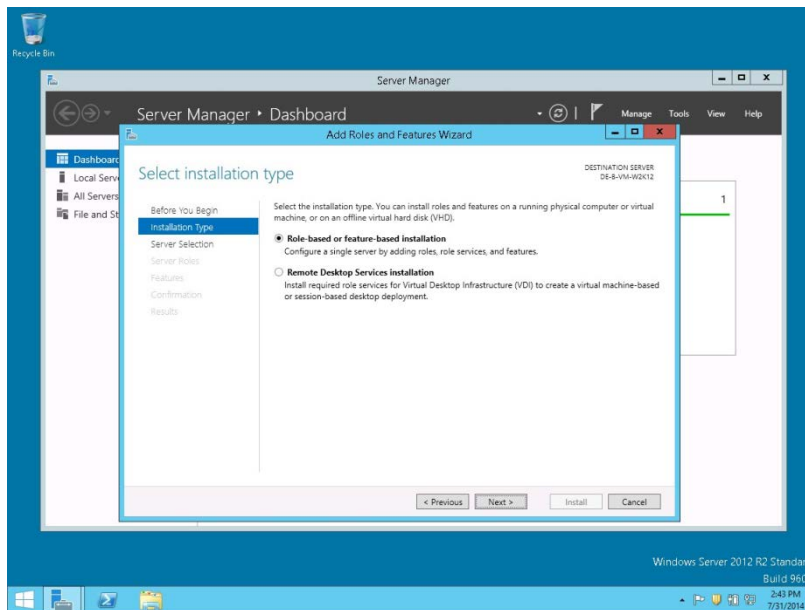
2. In the **Menu** select the option **Add Roles and Features** (upper right hand corner of the window).



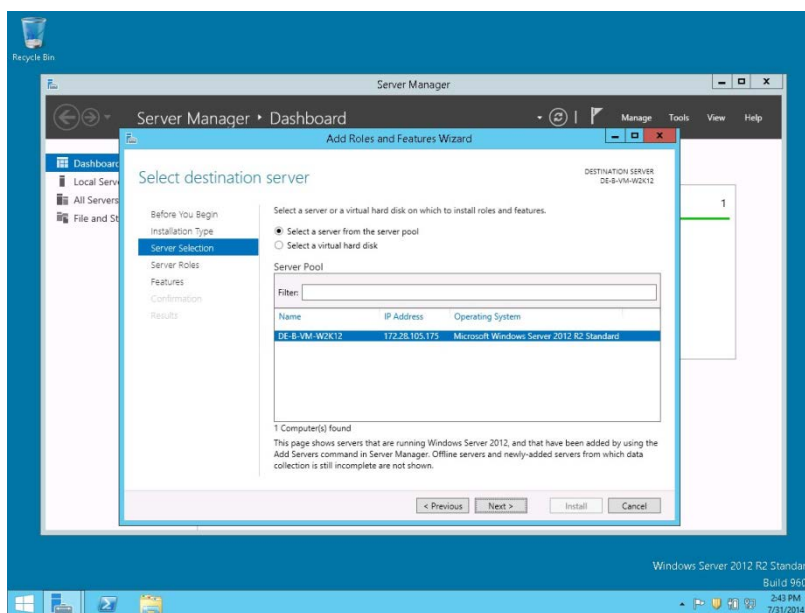
3. Click **NEXT** to continue.



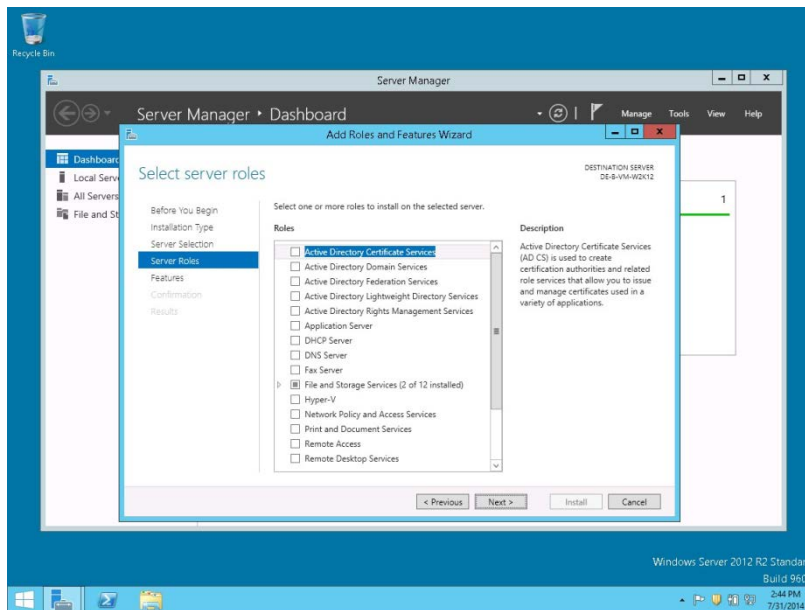
4. Select the option: **Role-based or feature-based installation**. Click **NEXT** to continue.



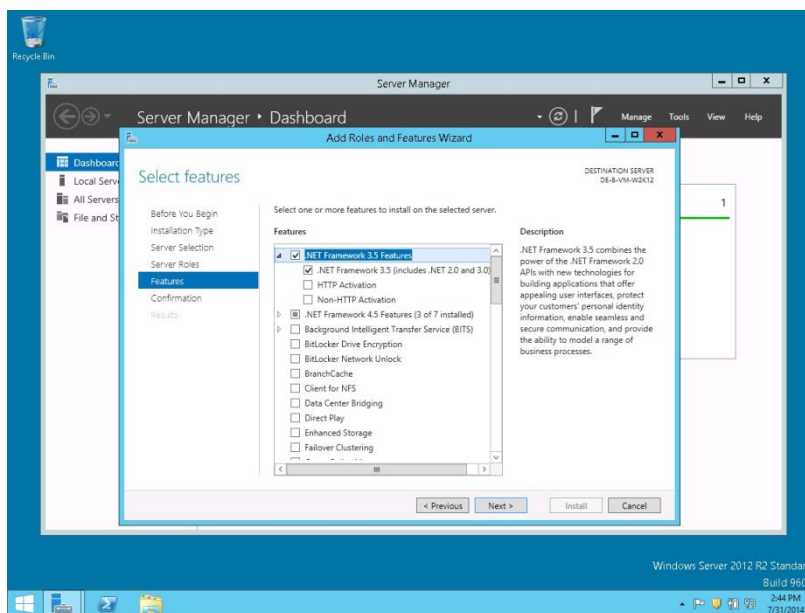
5. Select the option: **Select a server from the server pool list and**. Mark your Server from the list and click **NEXT** to continue.



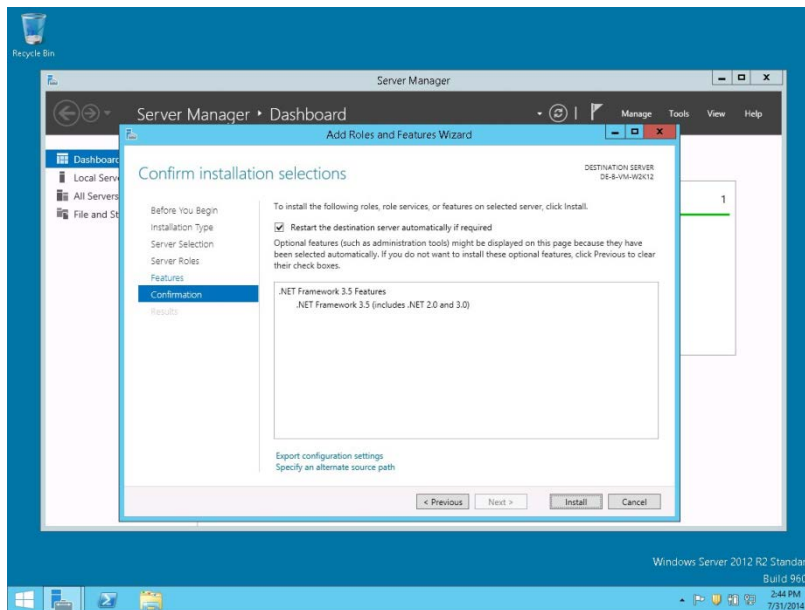
6. Click **NEXT** to continue without selecting any Roles.



7. Select the feature **.NET Framework 3.5 (includes .NET 2.0 and 3.0)** in the **Features** window and click **NEXT** to continue.



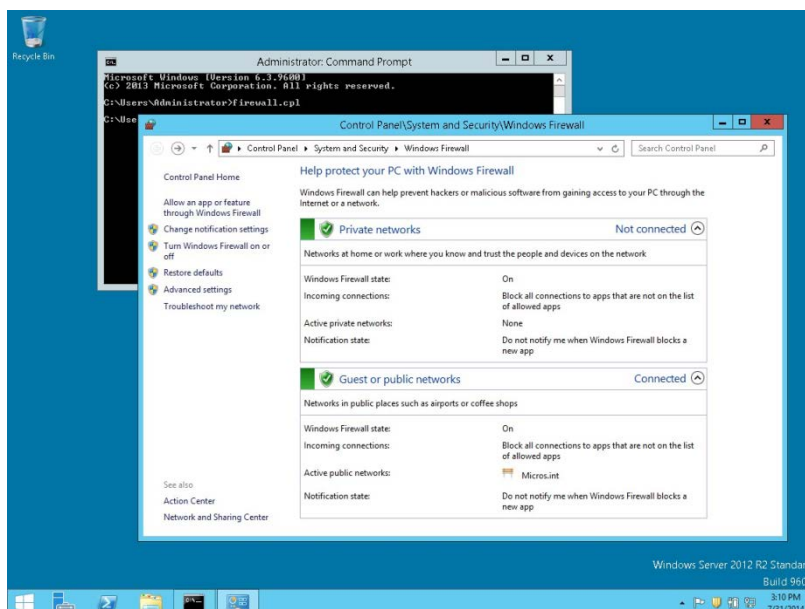
8. Mark the option: **Restart the destination server automatically if required**. Click **INSTALL** to install the selected features.



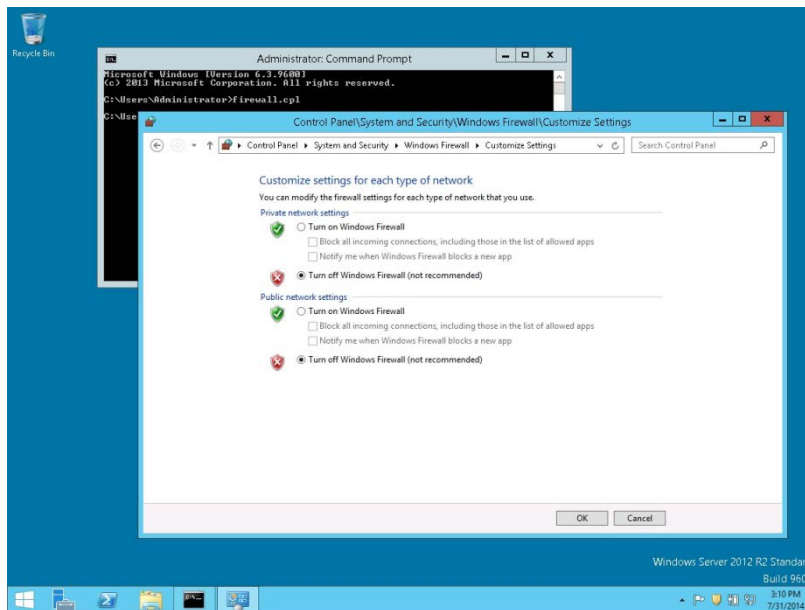
Disable the Firewall

During the installation, it is necessary to disable the Windows Firewall and UAC (User Account Control). After the installation they need to be activated again.

1. Open a command prompt (with the option **Run as administrator**) and type **firewall.cpl** to launch the Firewall Configuration utility.
2. In the Firewall Control Panel, click **Turn Windows Firewall on or off** (upper left hand corner of the window).



3. Select **Turn off Windows Firewall (not recommended)** in the Windows Firewall Settings window and click **OK** to save the changes.

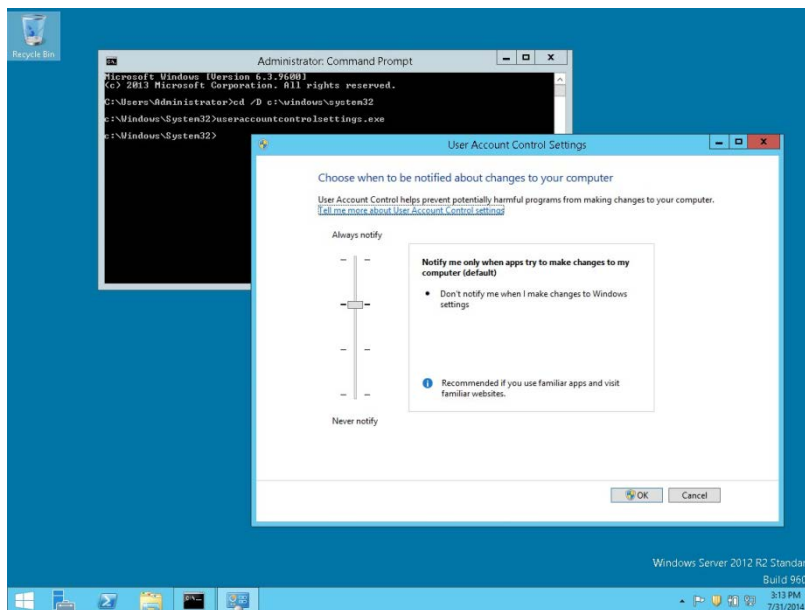


4. Close the Firewall Configuration utility.

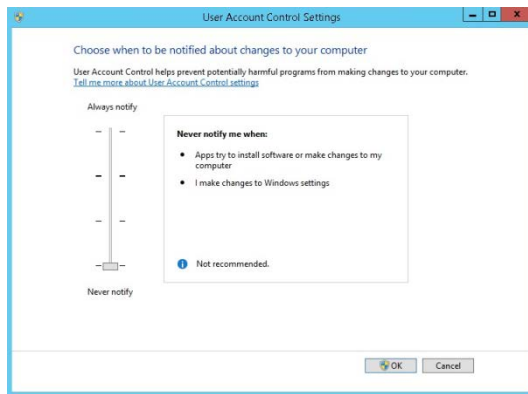
Disable User Access Control

1. Start the **User Access Control Configuration Assistant** by typing the following command:

```
cd /D c:\windows\system32
useraccountcontrolsettings.exe
```



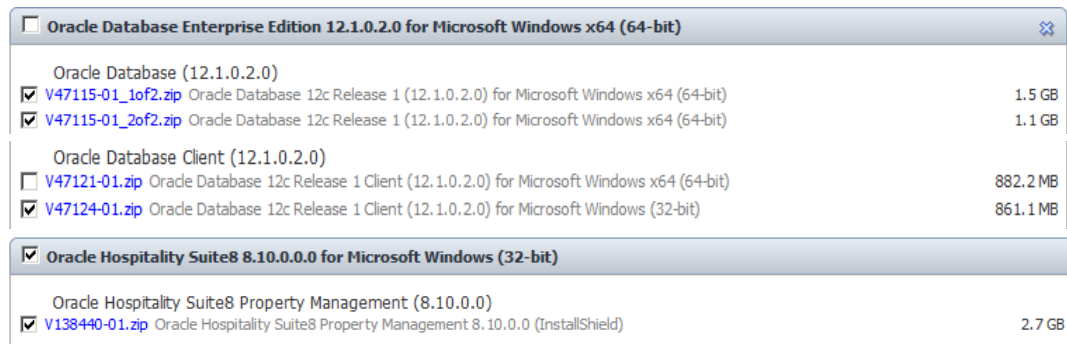
2. Turn off the notification by changing the UAC to **Never notify**. Click **OK** to save the changes.



3. Restart the computer to Turn off the **User Account Control**.

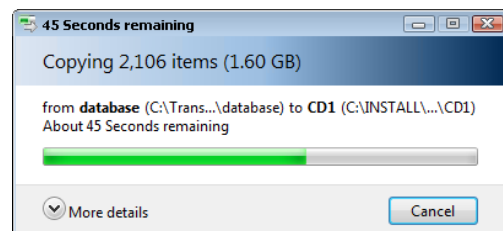
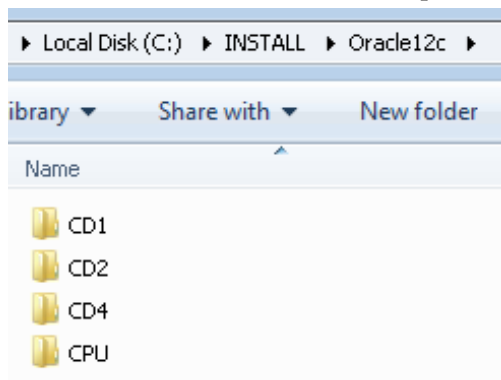
Getting Started

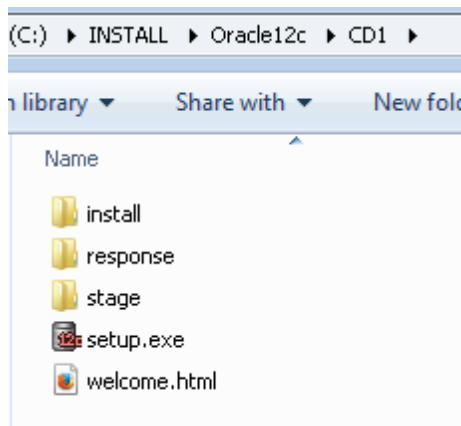
1. Download files from <https://edelivery.oracle.com>



For more information about oracle database, refer to <http://www.oracle.com/technetwork/database/index.html>

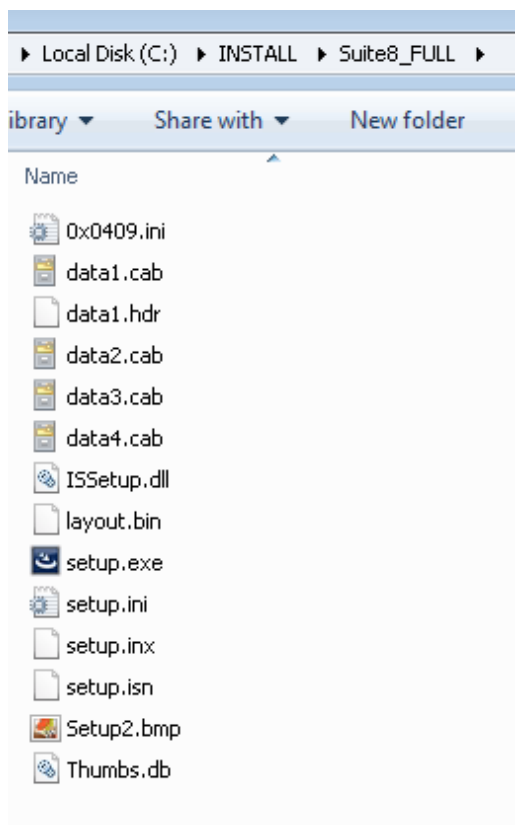
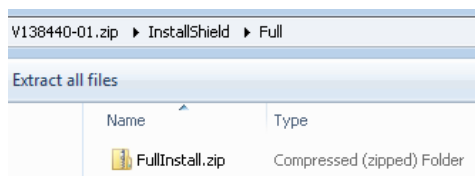
2. Create folders \CD1, \CD2 \CD4 and CPU in a temporary directory, such as C:\INSTALL, and unzip/copy the downloaded files:
 - CD1 - database
 - CD2 - client
 - CD4 - used for main patch, if available
 - CPU - used for Critical Patch Update, if available



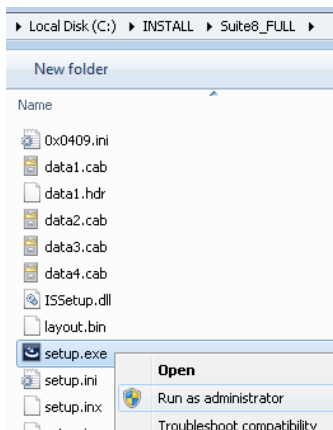


Note: The provided zip files include 'main folder'. This must not be copied. For example, the folder 'database' in zip file will become 'CD1' on the installation drive, and so forth.

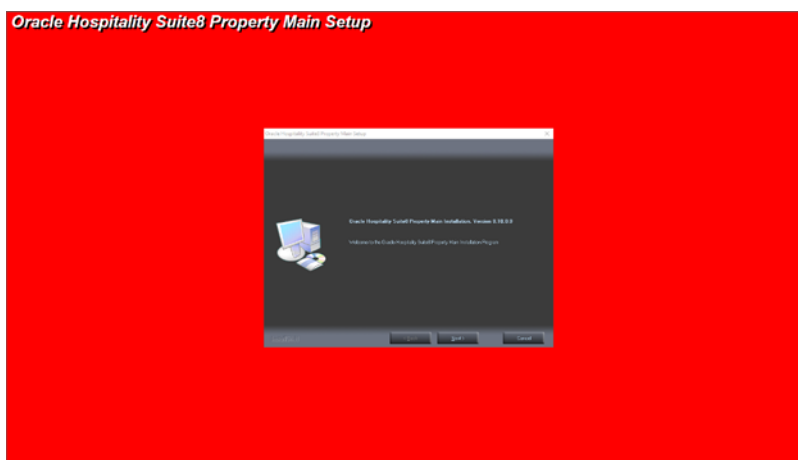
3. Create a temporary directory such as C:\INSTALL\Suite8_FULL and unzip/copy the Install Shield files.



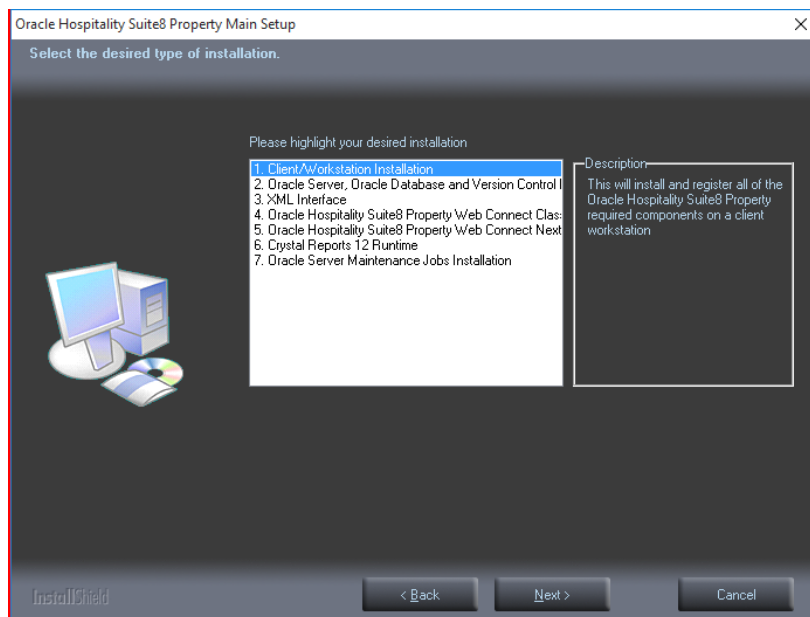
4. To start the Suite8 installation, select the **setup.exe** from the Suite8 install directory. From the drop-down menu, select **Run as Administrator....**



5. Click **Next** to continue.



6. Select the type of installation:
 - 1. Client/Workstation Installation
 - 2. Oracle Server, Oracle Instance and Version Control Installation
 - 3. XML Interface
 - 4. Oracle Hospitality Suite8 Property Web Connect Classic
 - 5. Oracle Hospitality Suite8 Property Web Connect Next Generation
 - 6. Crystal Reports 12 Runtime
 - 7. Oracle Server Maintenance Jobs Installation



Client/Workstation Installation

The client/workstation installation installs and registers all of the Suite8 required components such as Crystal 12 depending on the selection. It also detects if Oracle is installed or not.

Oracle Server, Oracle Instance and Version Control Installation

If the option: '**Oracle Server, Oracle database and Version Control Installation**' is selected, a search for an existing Oracle Installation is performed. If none is found then the install shield guides the Oracle Server Installation and creates an Oracle instance/database as well as Suite8 Schemas. All required files for Suite8 Version Control are also installed on the server.

Version Control is a tool to speed up the upgrade process. Once Version Control is active, the Suite8 program files can be placed in one location on the server and each time a user logs in, a check is performed ensuring that the correct version of the program files is located on the local drive of the machine. If the correct version is not located then it is copied over from the server.

Oracle Hospitality Suite8 Property Web Connect



Selecting Oracle Hospitality Suite8 Property Web Connect installs Suite8 Web Connect, the web booking engine.

For system requirements and setup information, please read the documentation for Oracle Hospitality Suite8 Property Web Connect

XML Interface

Selecting **XML Interface** installs Suite8 XML Interface. This interface is required for example for Suite8 Web Connect, Hotel Connector and various Interfaces such as Hurdle XML Interface.

Crystal Reports 12 Runtime

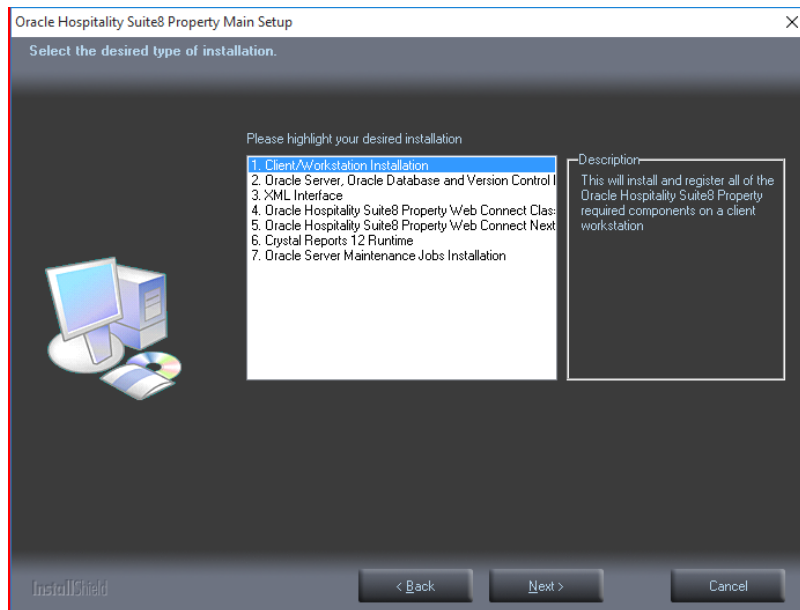
Selecting this option installs Crystal 12 runtime files.

Oracle Server Maintenance Jobs Installation

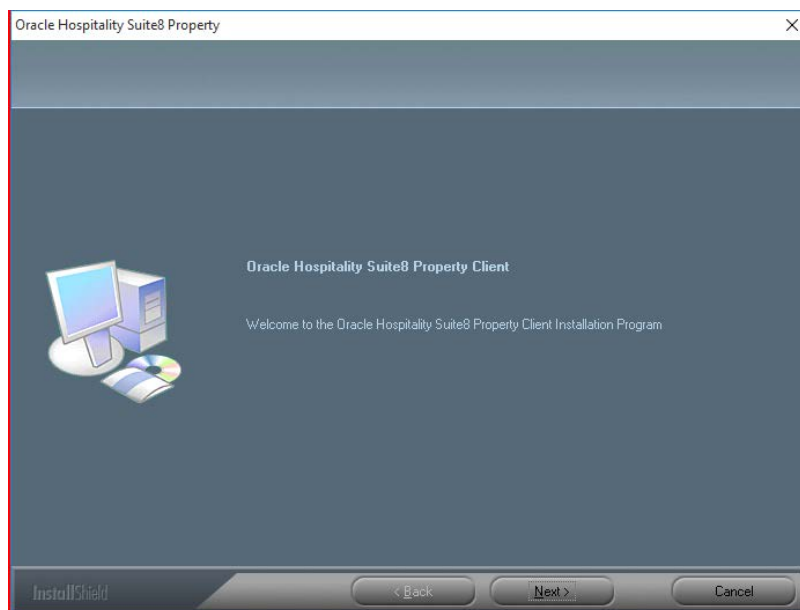
Selecting this option installs Oracle Backup and Maintenance Jobs and required files.

3 Installation of Suite8 Client

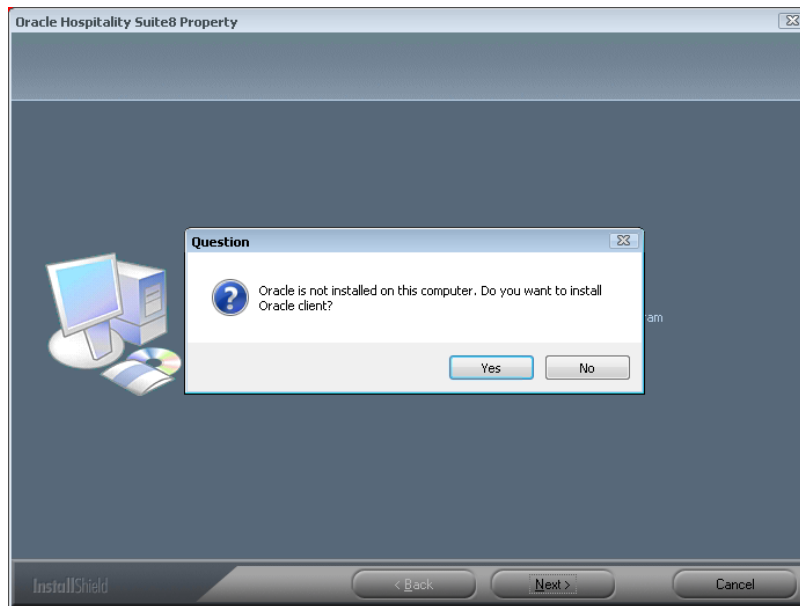
1. Select Client/Workstation Installation and click **Next** to continue.



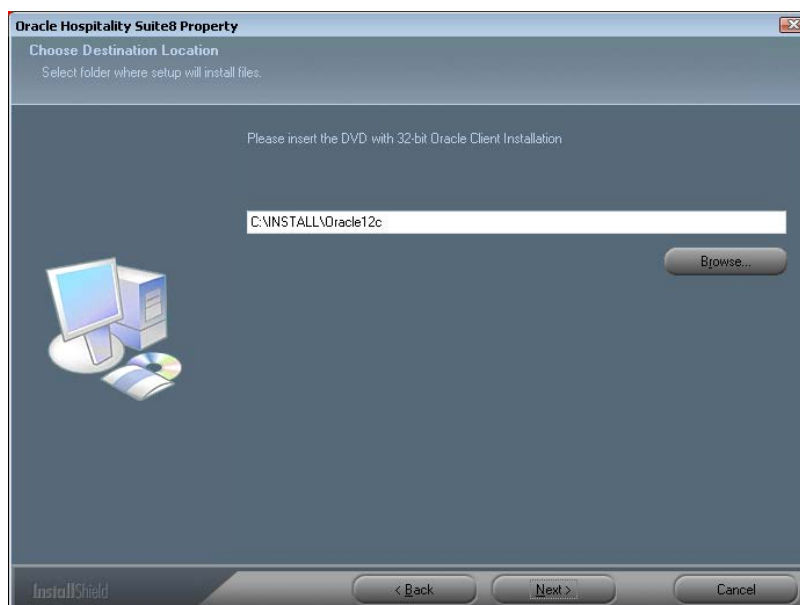
2. The Oracle Client Install shield Wizard will be started. Click **Next** to continue.



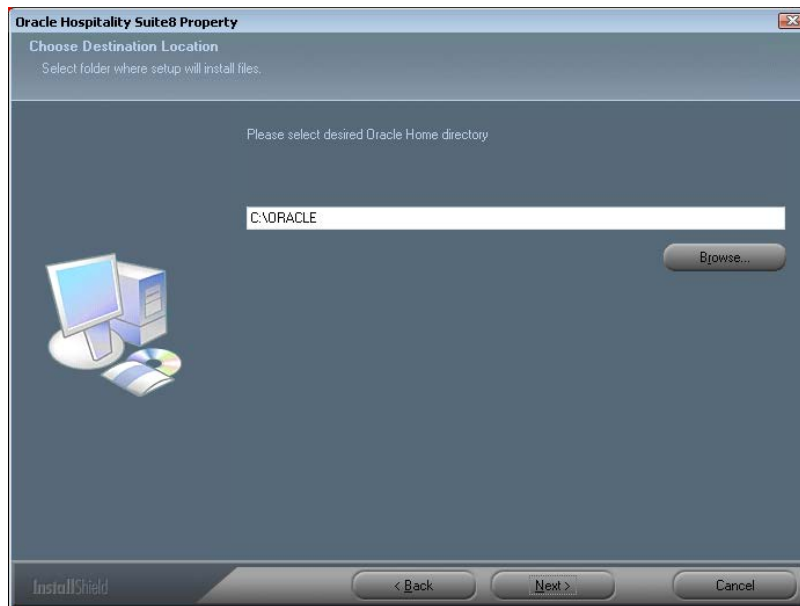
3. If the Oracle client software is not installed the following message is displayed. Click **Yes** to continue.



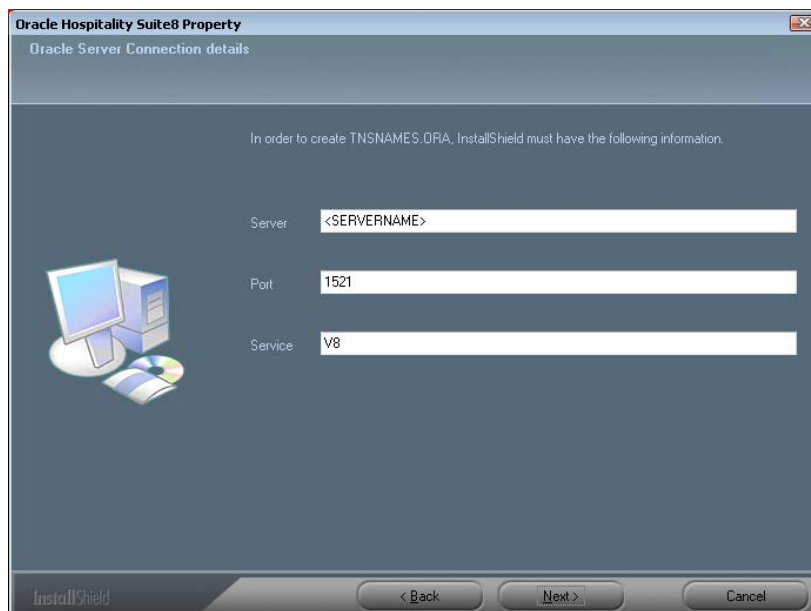
4. Select the path on your hard disk where the Oracle Installation files has been copied, such as **C:\INSTALL\Oracle12c**. Click **Next** to continue.



5. Enter the Oracle home directory for the Oracle Client **C:\ORACLE**. Click **Next** to continue.

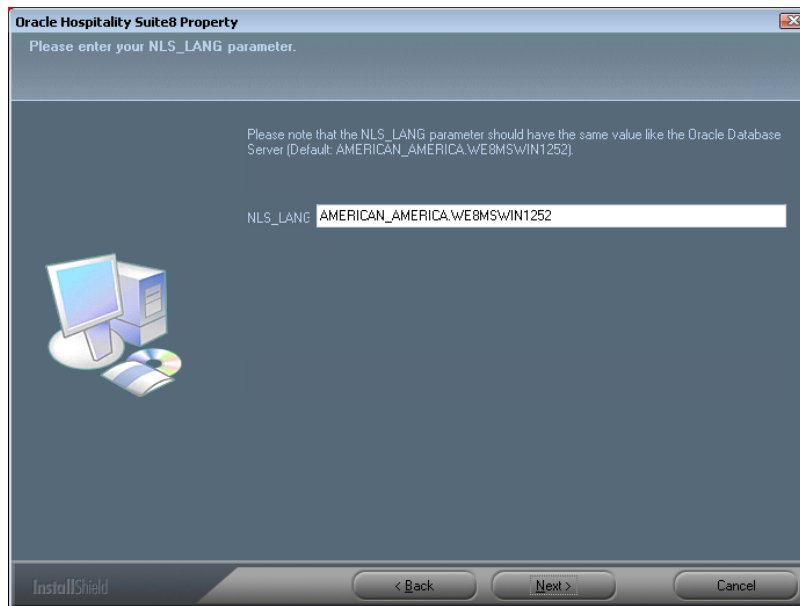


6. Enter the **Server** name or IP address for the Oracle Database Server. Click **Next** to continue.



7. Enter the NLS_LANG parameter which depends on the Operating System Locale. This Language value will be used for the Oracle communication between Suite8 Client and Oracle Database.

The default value is: AMERICAN_AMERICA.WE8MSWIN1252.
Click **Next** to continue.



Note: If you want to connect with the Oracle Client to an Oracle Database with Multilingual support (UNICODE), please use the NLS_CHARACTER_SET: AL32UTF8 (e.g. **AMERICAN_AMERICA.AL32UTF8**).



Note: The following NLS_LANG values are current supported:

Operating System Locale	NLS_LANG Value
Arabic (U.A.E.)	ARABIC_UNITED ARAB EMIRATES.AR8MSWIN1256
Bulgarian	BULGARIAN_BULGARIA.CL8MSWIN1251
Catalan	CATALAN_CATALONIA.WE8MSWIN1252
Chinese (PRC)	SIMPLIFIED CHINESE_CHINA.ZHS16GBK
Chinese (Taiwan)	TRADITIONAL CHINESE_TAIWAN.ZHT16MSWIN950
Chinese (Hong Kong HKCS)	TRADITIONAL CHINESE_HONG KONG.ZHT16HKSCS
Chinese (Hong Kong HKCS2001)	TRADITIONAL CHINESE_HONG KONG.ZHT16HKSCS2001
Croatian	CROATIAN_CROATIA.EE8MSWIN1250
Czech	CZECH_CZECH REPUBLIC.EE8MSWIN1250
Danish	DANISH_DENMARK.WE8MSWIN1252
Dutch (Netherlands)	DUTCH_THE NETHERLANDS.WE8MSWIN1252
Dutch (Belgium)	DUTCH_BELGIUM.WE8MSWIN1252
English (United Kingdom)	ENGLISH_UNITED KINGDOM.WE8MSWIN1252
English (United States)	AMERICAN_AMERICA.WE8MSWIN1252
English (United States)	AMERICAN_AMERICA.WE8ISO8859P9
English (United States)	AMERICAN_AMERICA.AL32UTF8
Estonian	ESTONIAN_ESTONIA.BLT8MSWIN1257
Finnish	FINNISH_FINLAND.WE8MSWIN1252
French (Canada)	CANADIAN FRENCH_CANADA.WE8MSWIN1252
French (France)	FRENCH_FRANCE.WE8MSWIN1252
German (Germany)	GERMAN_GERMANY.WE8MSWIN1252
Greek	GREEK_GREECE.EL8MSWIN1253
Hebrew	HEBREW_ISRAEL.IW8MSWIN1255
Hungarian	HUNGARIAN_HUNGARY.EE8MSWIN1250
Icelandic	ICELANDIC_ICELAND.WE8MSWIN1252
Indonesian	INDONESIAN_INDONESIA.WE8MSWIN1252
Italian (Italy)	ITALIAN_ITALY.WE8MSWIN1252
Japanese	JAPANESE_JAPAN.JA16SJIS
Korean	KOREAN_KOREA.KO16MSWIN949

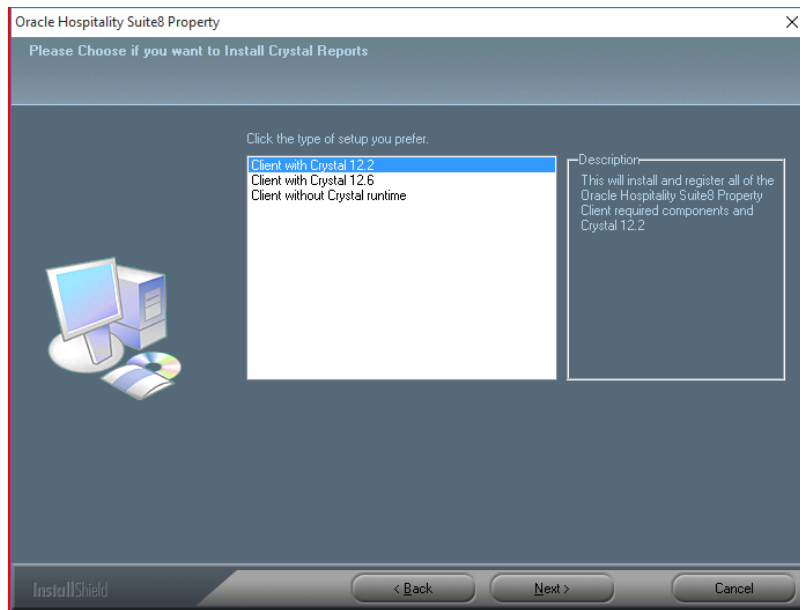
Latvian	LATVIAN_LATVIA.BLT8MSWIN1257
Lithuanian	LITHUANIAN_LITHUANIA.BLT8MSWIN1257
Norwegian	NORWEGIAN_NORWAY.WE8MSWIN1252
Polish	POLISH_POLAND.EE8MSWIN1250
Portuguese (Brazil)	BRAZILIAN PORTUGUESE_BRAZIL.WE8MSWIN1252
Portuguese (Portugal)	PORTUGUESE_PORTUGAL.WE8MSWIN1252
Romanian	ROMANIAN_ROMANIA.EE8MSWIN1250
Russian	RUSSIAN_CIS.CL8MSWIN1251
Slovak	SLOVAK_SLOVAKIA.EE8MSWIN1250
Spanish (Spain)	SPANISH_SPAIN.WE8MSWIN1252
Swedish	SWEDISH_SWEDEN.WE8MSWIN1252
Thai	THAI_THAILAND.TH8TISASCII
Spanish (Mexico)	MEXICAN SPANISH_MEXICO.WE8MSWIN1252
Spanish (Venezuela)	LATIN AMERICAN SPANISH_VENEZUELA.WE8MSWIN1252
Turkish	TURKISH_TURKEY.TR8MSWIN1254
Ukrainian	UKRAINIAN_UKRAINE.CL8MSWIN1251
Vietnamese	VIETNAMESE_VIETNAM.VN8MSWIN1258

8. Select **Client with Crystal 12**, if you want to install Crystal runtimes during the basis setup.
Please check the version used in your property.
Use Crystal 12.2 for Windows 7 or 12.6 for Windows 8.1 and Windows 10

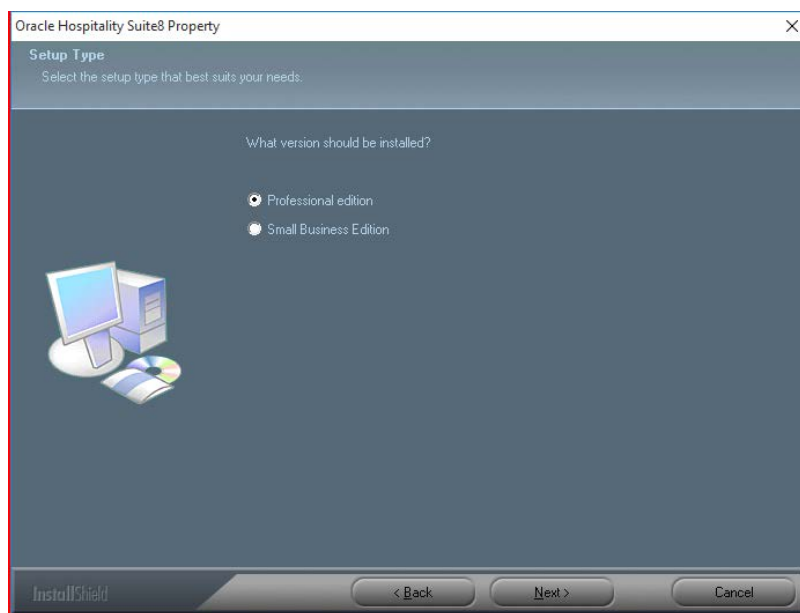
Click **Next** to continue.



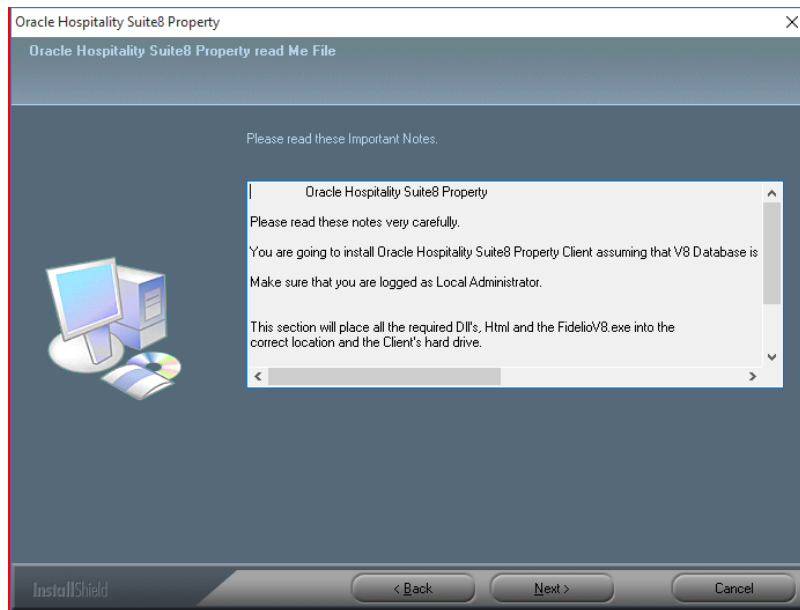
Note: Select **Client without Crystal runtime**, if you would like to install Crystal runtime manually.



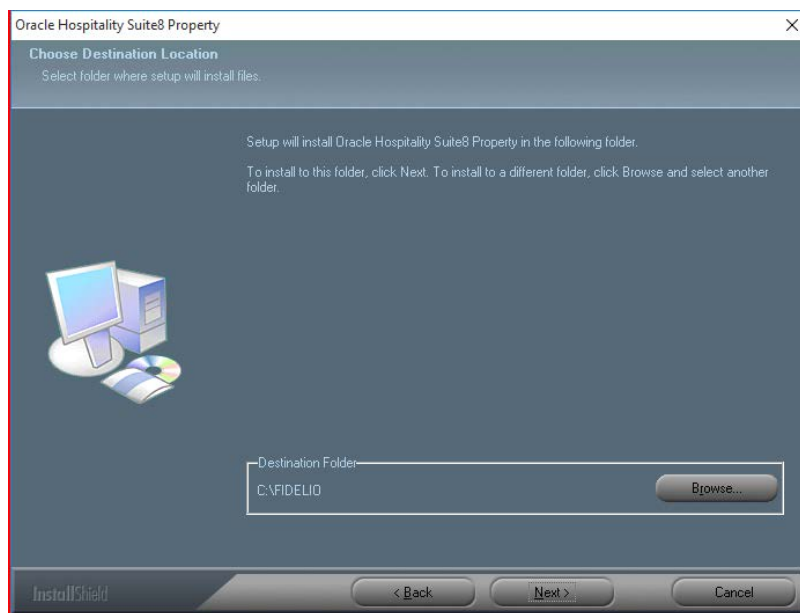
9. Select either the Professional Edition or the Small Business Edition according to the license code received from Oracle. Click **Next** to continue.



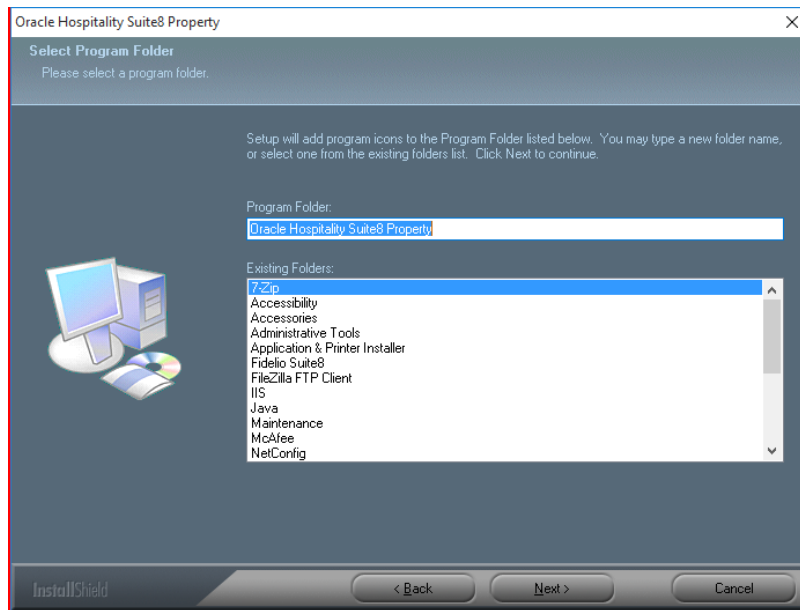
10. The next screen will display a read me text file detailing the installation process. This read me text contains the information listed under Prerequisites of the Oracle client/workstation installation. Read this information carefully and make sure that all required transactions have been completed. Click **Next** to continue.



11. The next step prompts with the path for the Fidelio program files, the default is: **C:\FIDELIO**. Select **Browse** to change the default path. Click **Next** to continue.



12. The setup program will create a Start Menu folder: **Oracle Hospitality Suite8 Property**. If you want to create a different folder, select the required program folder from the list or enter the new folder name. Click **Next** to continue.



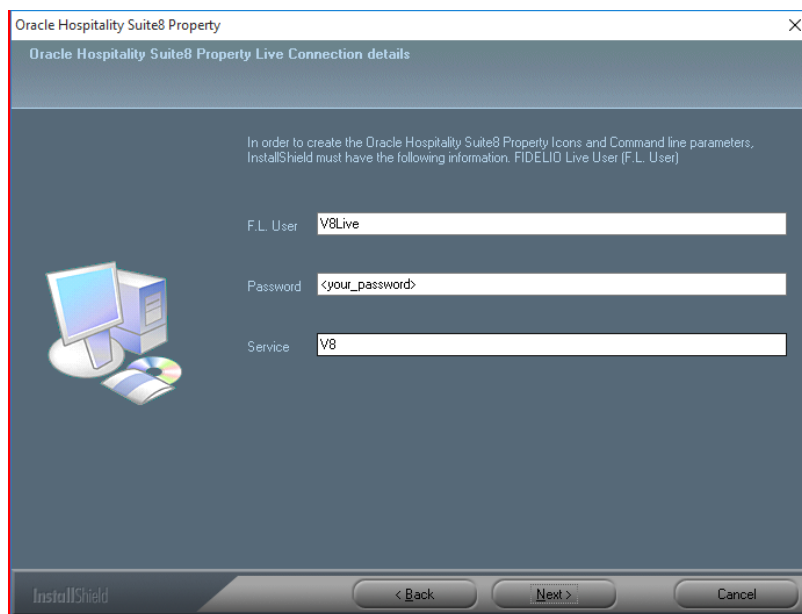
13. The following step requires the user and complex password to be entered to logon to the Suite8 live database and create the command line parameters. Click **Next** to continue.



Note: The **complex password** depends on the used V8LIVE user account password from the Oracle Database setup process.

Complexity requirements are:

- Not to contain the user's account name or parts of the user's full name that exceed two consecutive characters
- Minimum password length of 8 characters
- First character of password **MUST** be a character
- Password must contain at least 1 Lowercase character (a through z)
- Password must contain at least 1 Uppercase character (A through Z)
- Password must contain at least 1 digit (0 through 9)
- Password can contain special character: !*()_+{[]}@~#.,



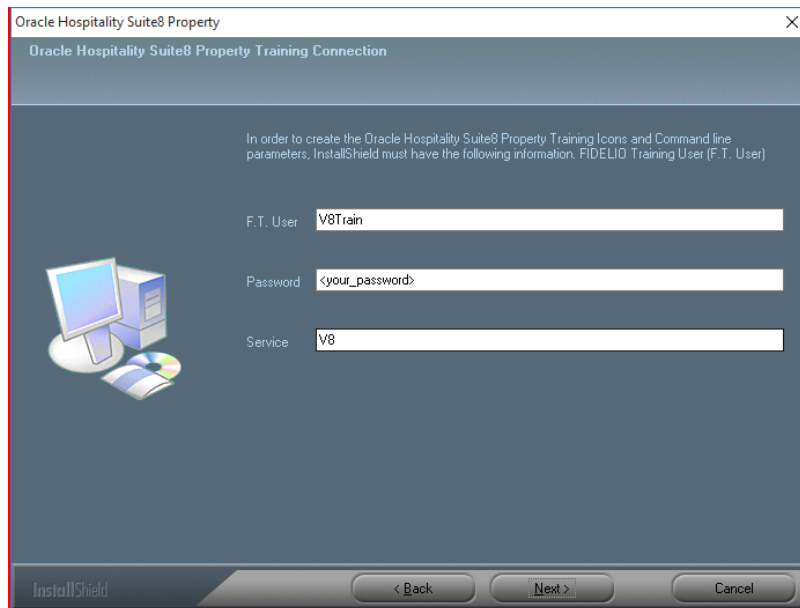
14. The next step is similar to the previous step, but requires the username and complex password to logon to the Suite8 training database and create the command line parameters. Click **Next** to continue.



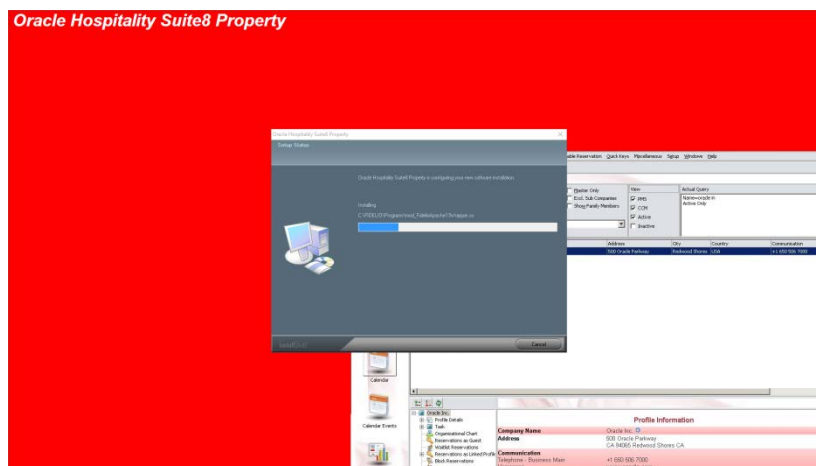
Note: The **complex password** depends on the used V8TRAIN user account password from the Oracle Database setup process.

Complexity requirements are:

- Not to contain the user's account name or parts of the user's full name that exceed two consecutive characters
- Minimum password length of 8 characters
- First character of password **MUST** be a character
- Password must contain at least 1 Lowercase character (a through z)
- Password must contain at least 1 Uppercase character (A through Z)
- Password must contain at least 1 digit (0 through 9)
- Password can contain special character: !*()_+{[]}@~#.,



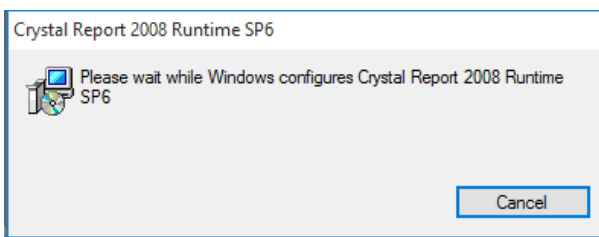
15. The program folder and runtimes are now created and registered.



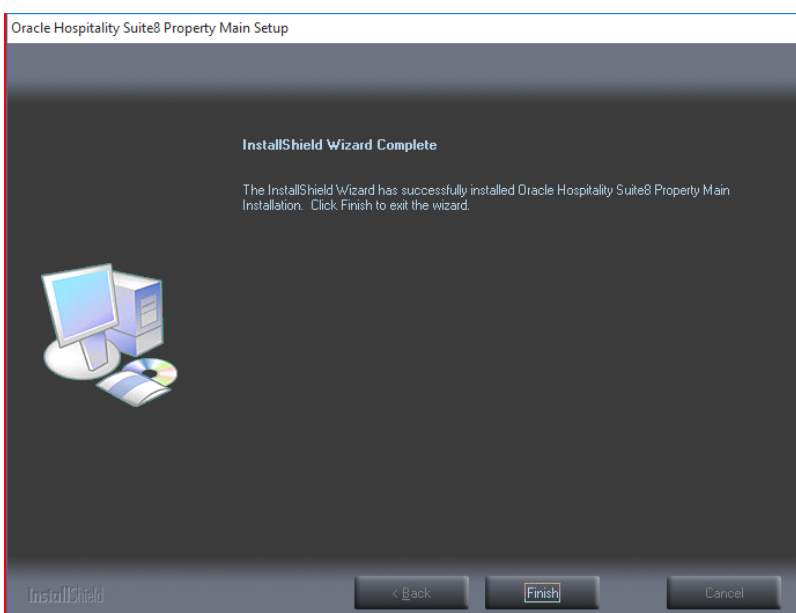
16. If the Oracle Client was not installed – the setup program will install the Oracle Client.



17. The install shield will register the Suite8 program modules install Crystal Reports 2008 Runtimes SP6.



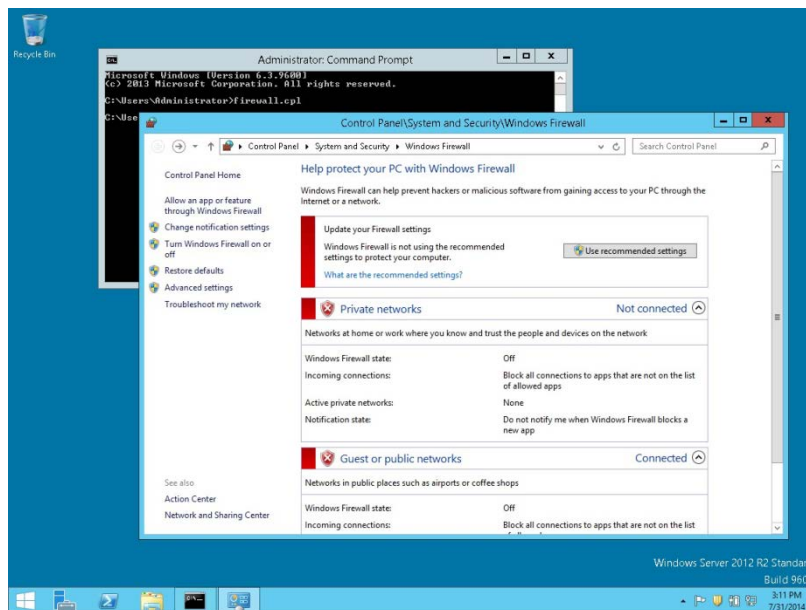
18. The Oracle Client install shield displays a message upon completion. Click **Finish** to continue and exit the Install shield Wizard.



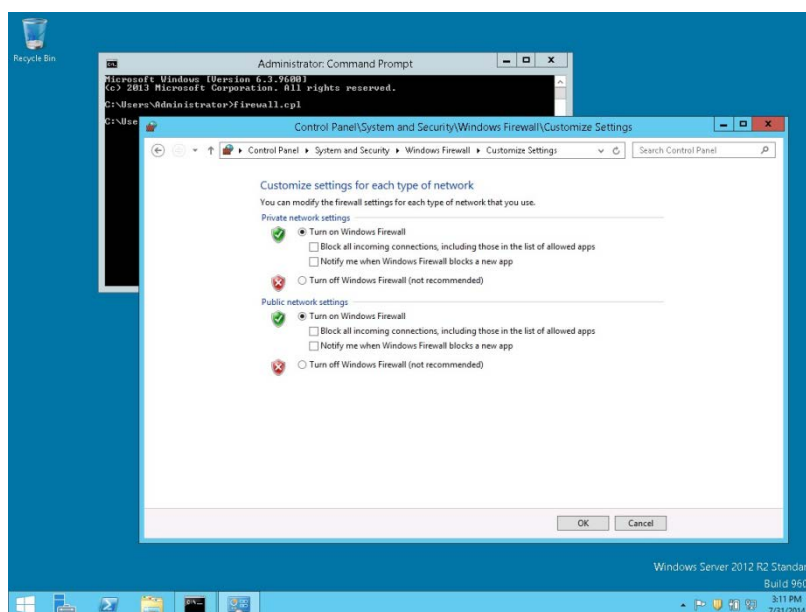
Enable the Firewall

After the installation is completed, it is necessary to enable the Windows Firewall again and turn on the **UAC (User Account Control)**.

1. Open a command prompt (with the option **Run as administrator** and type **firewall.cpl** to launch the Firewall Configuration utility.
2. In the Firewall Control Panel, click **Turn Windows Firewall on or off** (upper left hand corner of the window).



3. Select **Turn on Windows Firewall** in the **Windows Firewall Settings** window and click **OK** to save the changes.

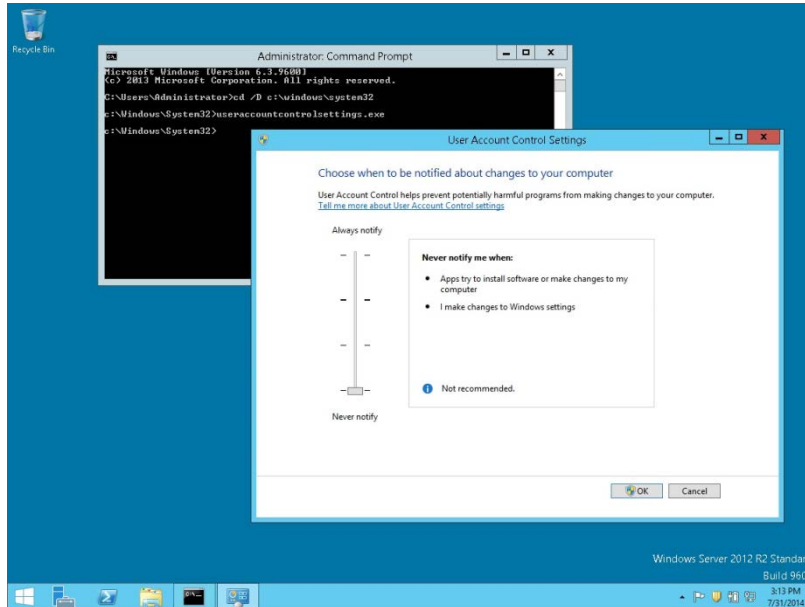


4. Close the Firewall Configuration utility.

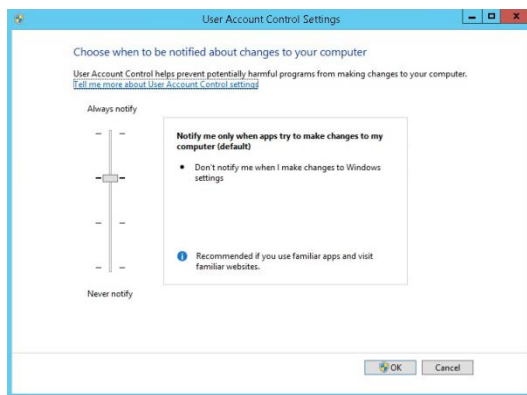
Enable User Access Control

1. Start the **User Access Control Configuration Assistant** by typing the following command:

```
cd /D c:\windows\system32  
useraccountcontrolsettings.exe
```



2. Turn on the notification by changing the UAC to **Default**. Click **OK** to save the changes.



Change the User Access Rights for the Oracle Client/Suite8 Client files

1. Open a command prompt (with the option **Run as administrator**).

Type the following commands for **Oracle 12cR1 client**:

```
cd /D c:\
```

```
icacls c:\oracle\12.1.0\client\network\admin\* /grant Users:F /T /C
```

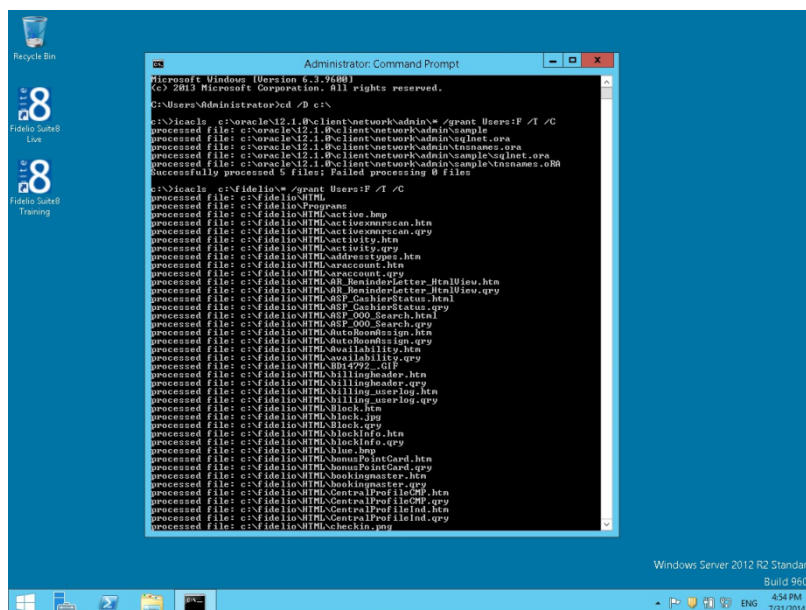
```
icacls c:\fidelio\* /grant Users:F /T /C
```

Type the following commands for **Oracle 11 client**:

```
cd /D c:\
```

```
icacls c:\oracle\11.2.0\client\network\admin\* /grant Users:F /T /C
```

```
icacls c:\fidelio\* /grant Users:F /T /C
```



Note: For German installations, the following commands are used:

```
icacls c:\oracle\1x.x.0\client\network\admin\* /grant Benutzer:F /T /C
```

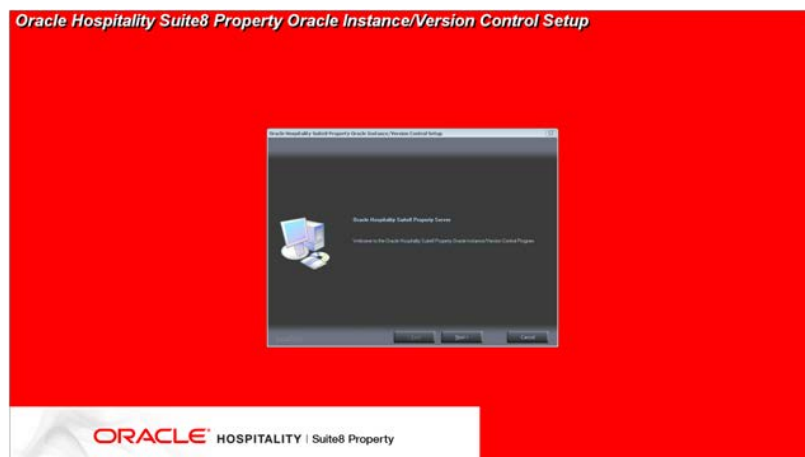
```
icacls c:\fidelio\* /grant Benutzer:F /T /C
```

4 Installation of the Suite8 Database

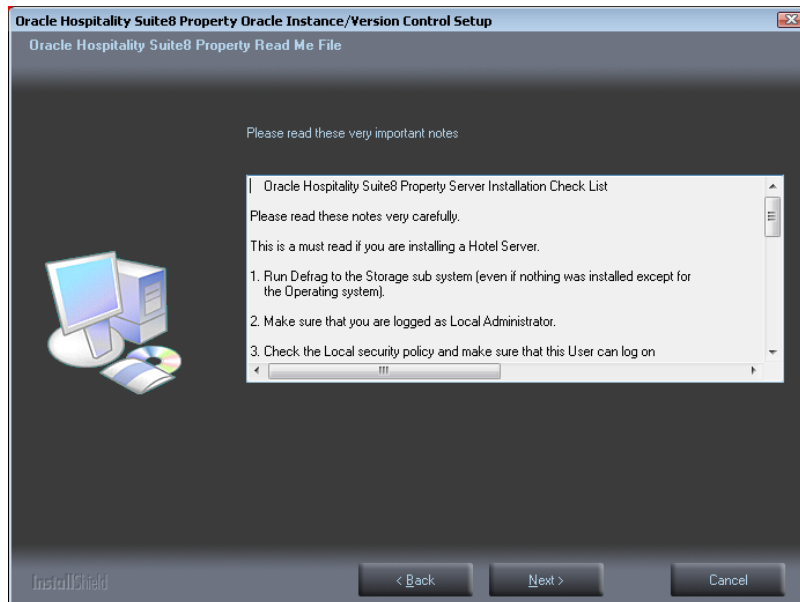
1. Select **Oracle Server, Oracle Instance and Schema Installation** and click **Next** to continue.



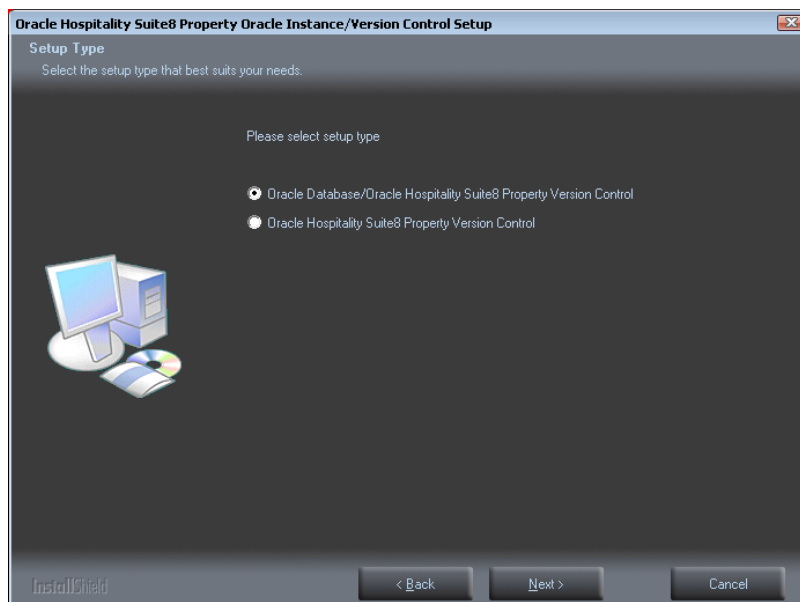
2. The Oracle Instance/Schema Setup Wizard will be started. Click **Next** to continue.



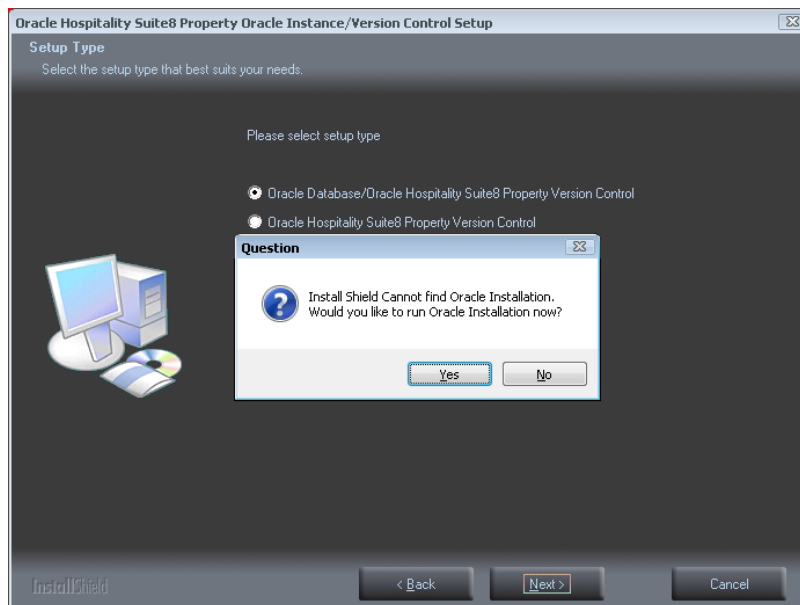
3. The next screen displays a read me text file detailing the installation process. Read this information carefully and make sure that all required transactions have been completed. Click **Next** to continue.



4. Select either the Oracle Database/Fidelio Suite8 Version Control or the Fidelio Suite8 Version Control option. The first option will install the Fidelio Suite8 Version Control, the Oracle database and the Night Auditor Reports Share. The second option will only install the Fidelio Suite8 Version Control and the Night Auditor Reports Share. Select the first option and click **Next** to continue.



5. If the Oracle Database software is not installed the following message is displayed. Click **Yes** to continue.



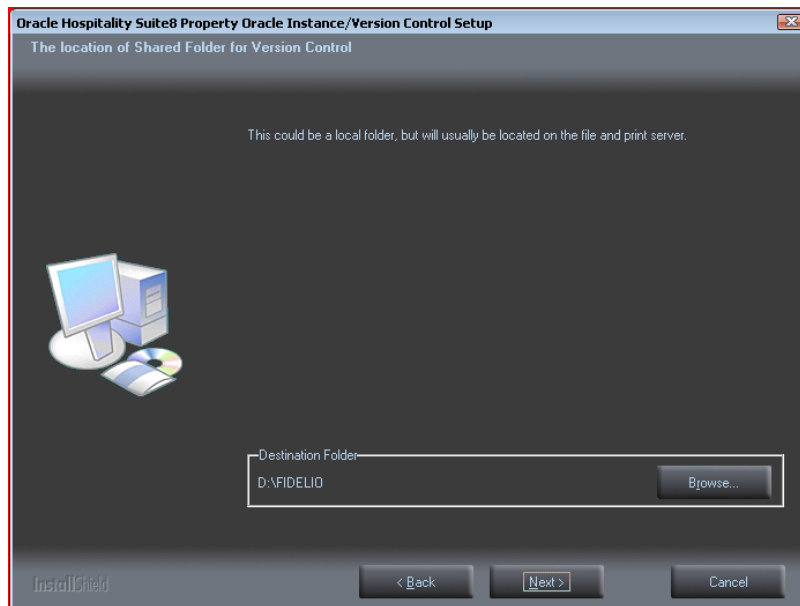
6. The next step prompts with the path for the Fidelio Version Control Base directory, the default is: **D:\FIDELIO**. Select **Browse** to change the default path. The install shield performs the following tasks:

Creates the following sub directories on the Version Control Base directory (for example: **D:\FIDELIO**):

- \PROGRAMS
- \HTML
- \VERSIONCTRL

Copies all the Fidelio Suite8 files to the directories: **.\PROGRAMS**, **.\HTML** and **.\VERSIONCTRL** and creates a Windows Share: VersionCtrl\$ for the Version Control Base directory.

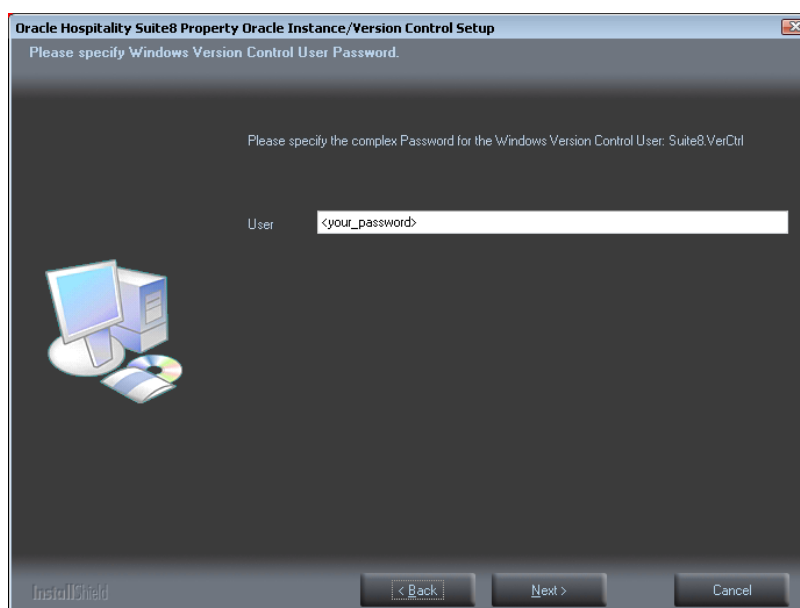
Click **Next** to continue.



7. The following step requires the complex password to be entered for the Windows User account (Suite8.VerCtrl) for the Fidelio Version Control Share/Fidelio Night Auditor Report Share. Click **Next** to continue.

Complexity requirements are:

- Not to contain the user's account name or parts of the user's full name that exceed two consecutive characters
- Minimum password length of 12 characters
- First character of password **MUST** be a character
- Password must contain at least 1 Lowercase character (a through z)
- Password must contain at least 1 Uppercase character (A through Z)
- Password must contain at least 1 digit (0 through 9)
- Password can contain special character: !*()_+{[]}@~#.,



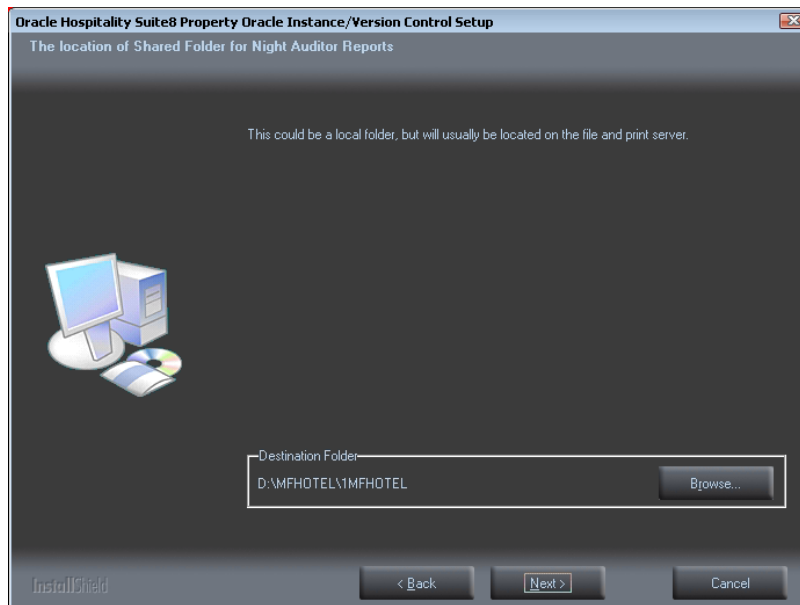
8. The next step prompts with the path for the Fidelio Night Auditor Report Share directory, the default is: **D:\MFHOTEL\1MFHOTEL**. Select **Browse** to change the default path. The install shield performs the following tasks:

Creates the following sub directory on the Night Auditor Reports Share directory (for example: **D:\MFHOTEL\1MFHOTEL**):

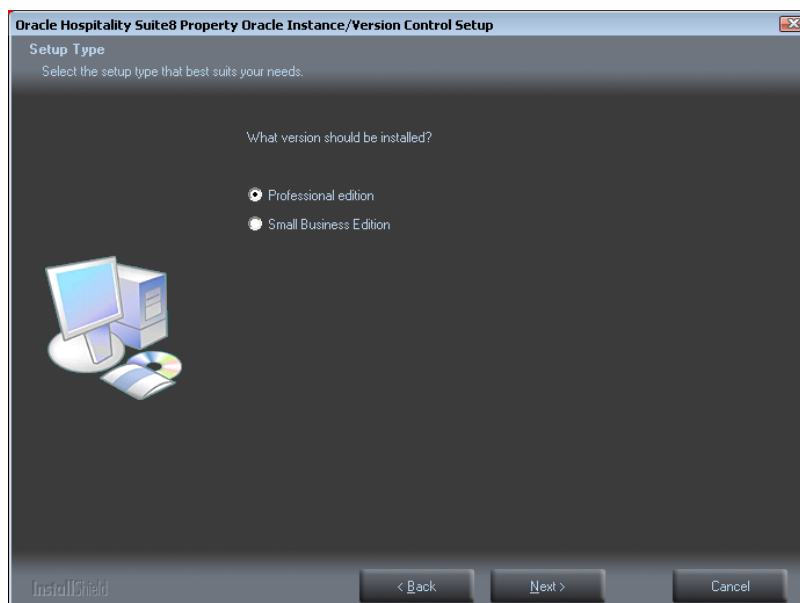
\NAReports

Creates a Windows Share: 1MFHOTEL\$ for the Night Auditor Report Share directory.

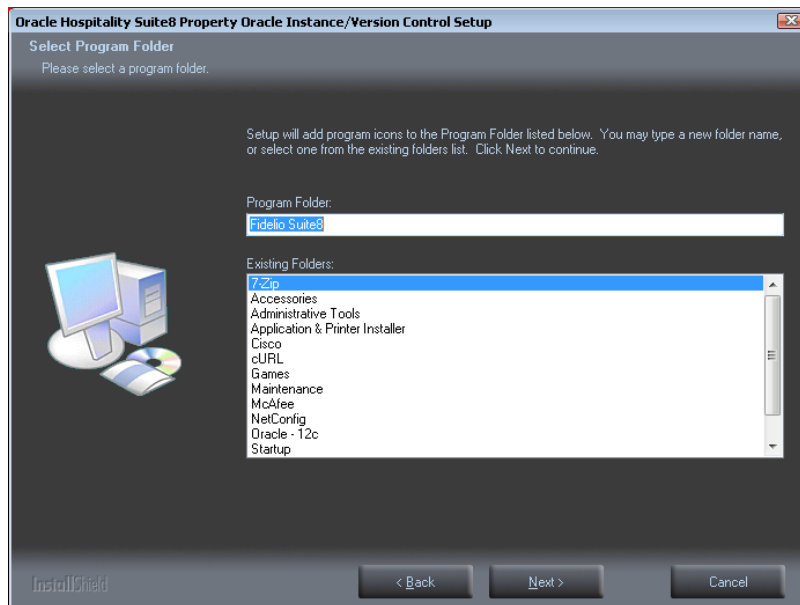
Click **Next** to continue.



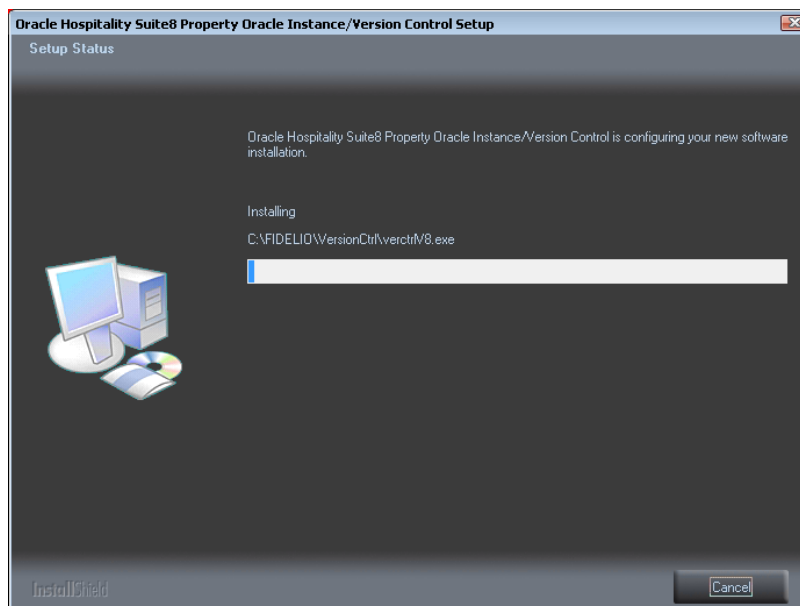
9. Select either the Professional Edition or the Small Business. Click **Next** to continue.



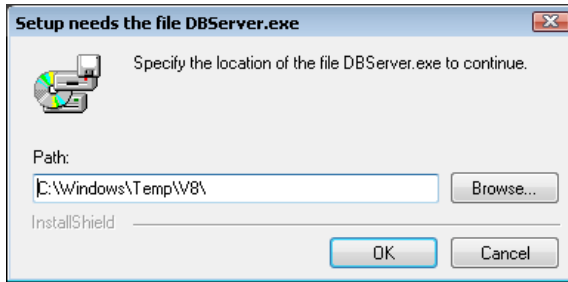
10. The setup program will create a Start Menu folder: Fidelio Suite8. If you want to create a different folder, select the required program folder from the list or enter the new folder name. Click **Next** to continue.



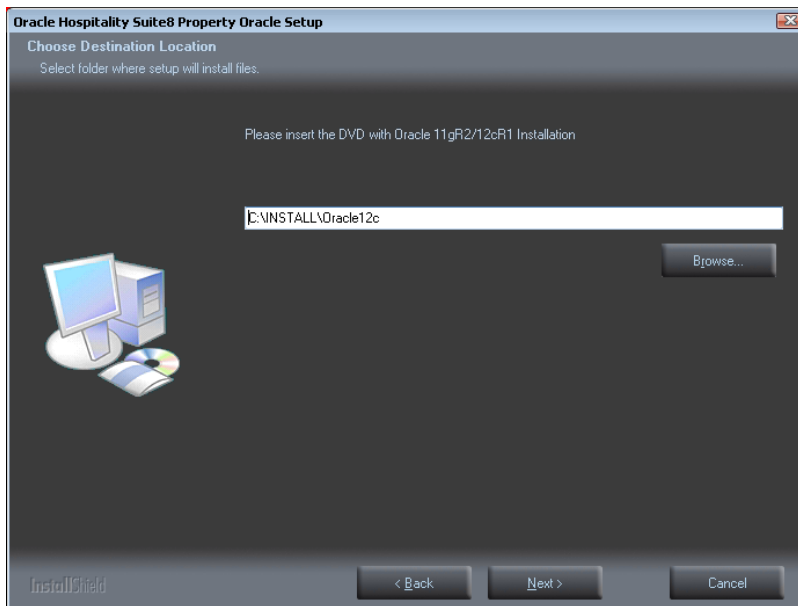
11. The Fidelio Version Control folders, the Night Auditor Reports Share folder and the Shares are now created.



12. Select the drive where the DBServer.exe is located. Default is C:\Windows\Temp\V8\
Click OK.



13. Select the path on your hard disk where the Oracle Installation files has been copied to, such as **C:\INSTALL\Oracle12c**. Click **Next** to continue.



Note: After selecting the path where the Oracle Installation files has been copied to, the system checks the directory structure.

- Oracle 64-bit Version, supported on AMD64/EM64T and Intel Processor Chips that adhere to the x86-64 architecture.
- Running 32-bit Oracle Database server on 64-bit OS is not supported.

If the install wizard cannot find the correct directory structur, a message will be displayed. Verify you selection and check for the right path (CD1, CD2, CD4, CPU ...)

14. If the selected Oracle Database directory is 12c, the Database Type has to be selected. The following setup types are available:

- Oracle 12c Database (Preferred)
- Oracle 12c Multitenant Database

Note: The selection of the option: Oracle 12c Multitenant Database requires “**Experience**” with Oracle 12c Multitenent Databases.

- Architecture Overview

A new option for Oracle Database 12c, Oracle Multitenant delivers a new architecture that allows a multitenant container database to hold many pluggable databases. An existing database can simply be adopted with no application changes required. Oracle Multitenant fully complements other options, including Oracle Real Application Clusters and Oracle Active Data Guard.



- **High Consolidation Density**

The many pluggable databases in a single multitenant container database share its memory and background processes. This enables consolidation of many more pluggable databases compared to the old architecture, offering similar benefits to schema-based consolidation but with none of the major application changes required by that approach.



- **Rapid Provisioning and Cloning Using SQL**

Creating pluggable databases, moving pluggable databases between containers, and cloning pluggable databases are done with new SQL commands and take just seconds. When the underlying file system supports thin provisioning many terabytes can be cloned almost instantaneously simply by using the keywords “snapshot copy” in the SQL command.



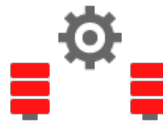
- **New Paradigms for Rapid Patching and Upgrades**

The investment of time and effort to patch one multitenant container database results in patching all of its many pluggable databases. To patch a single pluggable database, you simply unplug/plug to a multitenant container database at a different Oracle Database software version.



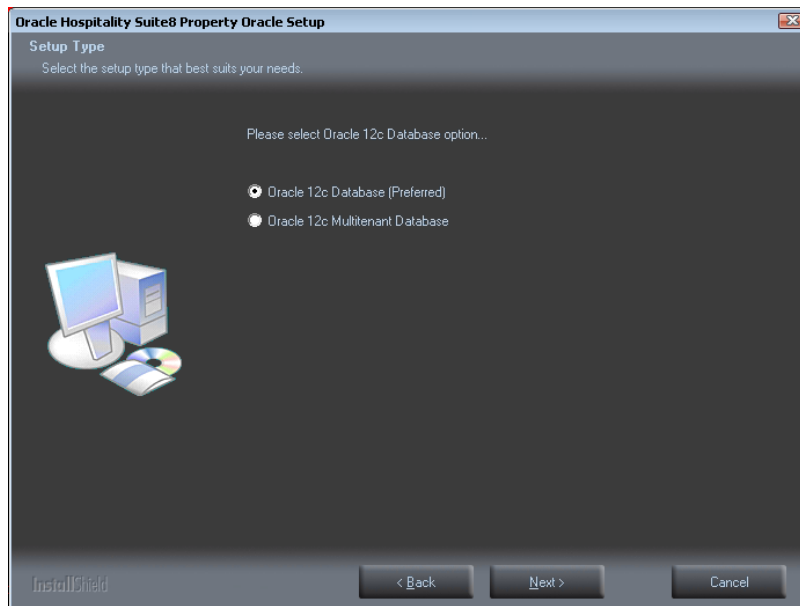
- **Manage Many Databases as One**

By consolidating existing databases as pluggable databases, administrators can manage many databases as one. For example, tasks such as backup and disaster recovery are performed at the multitenant container database level.



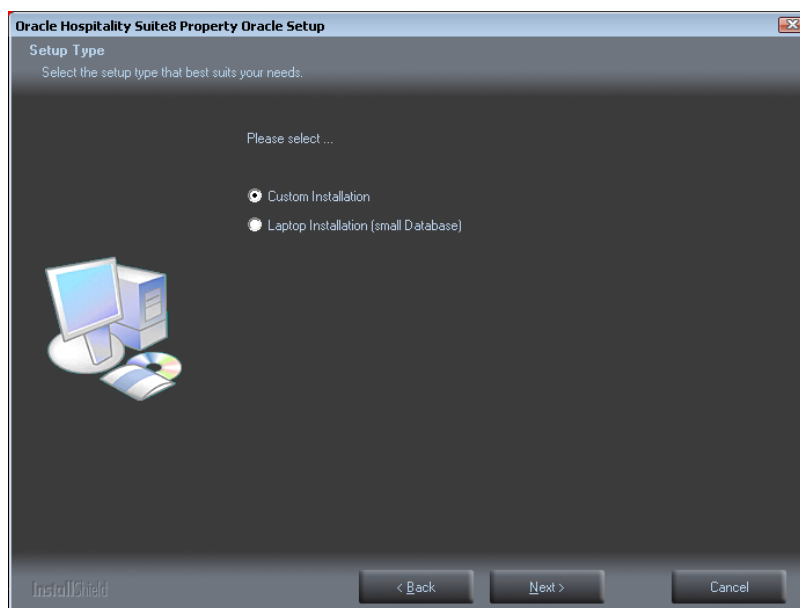
- **Pluggable Database Resource Management**

By consolidating existing databases as pluggable databases, administrators can manage many databases as one. For example, tasks such as backup and disaster recovery are performed at the multitenant container database level.



15. Select the Setup Type, the following options are available:

- Custom Installation.
- Laptop Installation



16. If the installation should be a customized configured Oracle database, select the Installation type: **Custom Install**. Use **Laptop Install (small database)** for small installation.

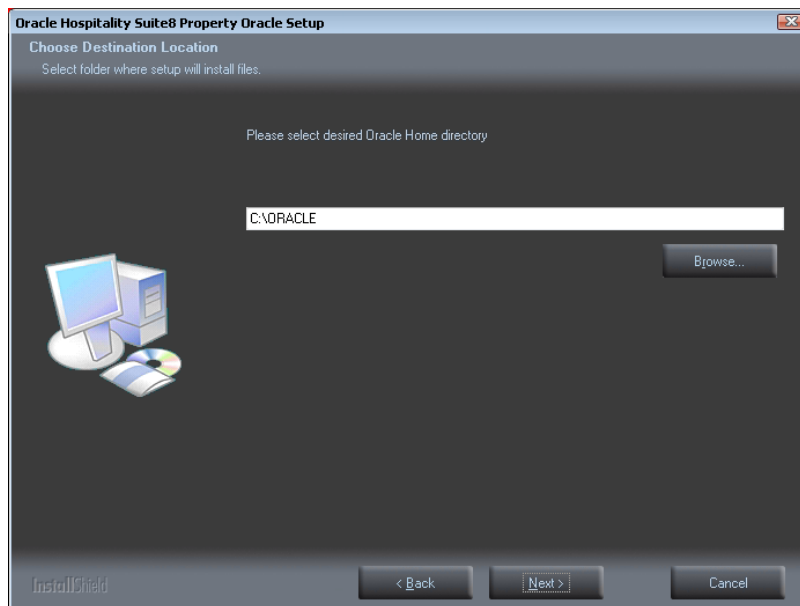
With these options you can define the following parameters:

- Online Redo Log Path
- Oracle Tablespace Path
- NLS_LANG (Character Set)
- National Character Set
- Oracle SID
- V8MAIN tablespace size
- V8CONF tablespace size
- V8LARGE tablespace size
- V8INDEX tablespace size
- V8TEMP tablespace size

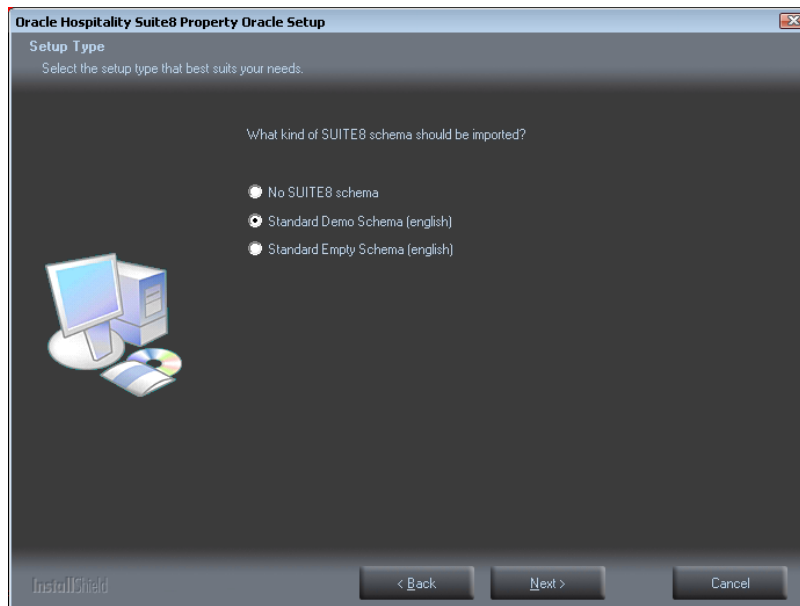


Note: The **Laptop Install (small database) option** installs the Oracle Database without ARCHIVE MODE.

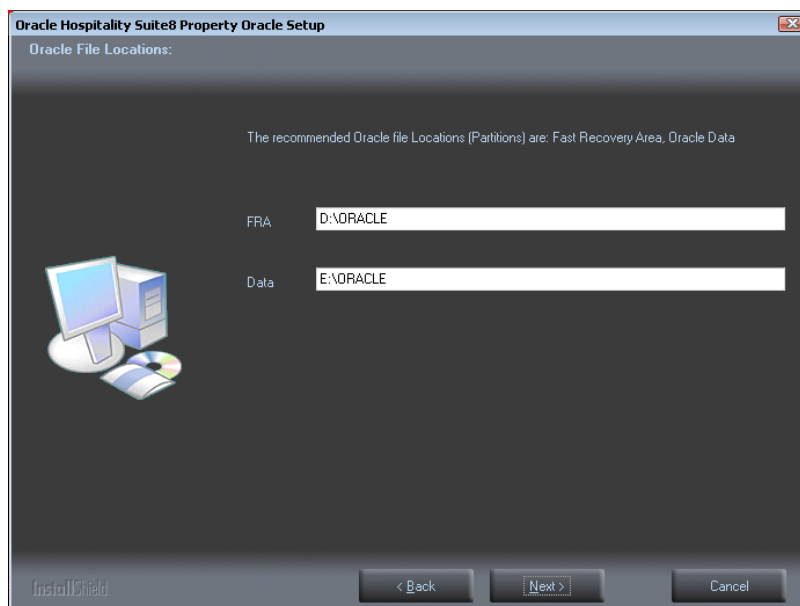
17. Enter the Oracle home directory for the Oracle Database **C:\ORACLE**. Click **Next** to continue.



18. Select the database import type: **Standard demo (English)**. Click **Next** to continue.



19. Enter the path for the Online Redo Log files and the Oracle Tablespace files. The default for Online Redo Log files is: **D:\ORACLE**. The default for Tablespace files is: **E:\ORACLE**. Click **Next** to continue.



20. Enter the values for the NLS_LANG (Character Set) of the Oracle Database. The default NLS_LANG (Character Set) is: **AMERICAN_AMERICA.WE8MSWIN1252**. The default National Character Set is: **AL16UTF16**. Enter the value for the Oracle SID of the Oracle Database. The default Oracle SID is: **V8**. Click **Next** to continue.

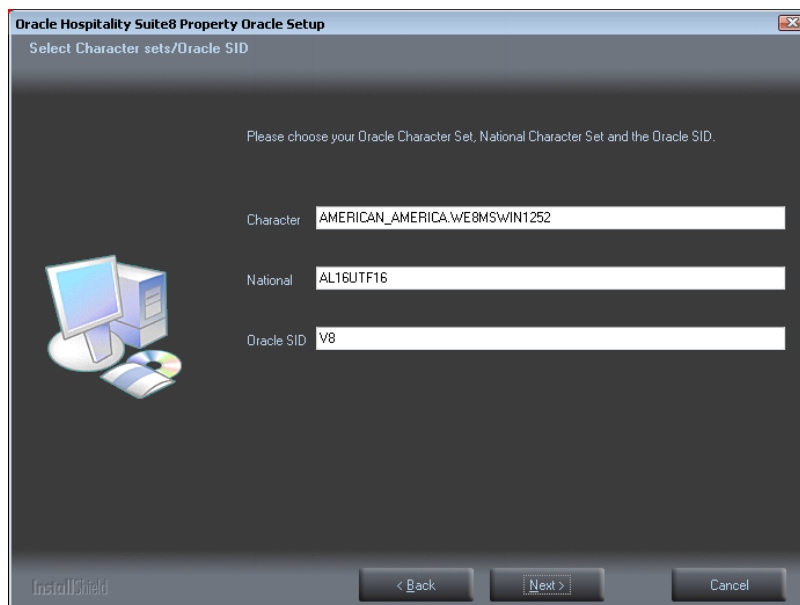


Note: If the installation should support different languages/characters - for example Arabic characters – you need to change the value for **NLS_LANG (Character Set)** for example: **ARABIC_UNITED ARAB EMIRATES.AR8MSWIN1256**.

The following NLS_LANG values are current supported:

Operating System Locale	NLS_LANG Value
Arabic (U.A.E.)	ARABIC_UNITED ARAB EMIRATES.AR8MSWIN1256
Bulgarian	BULGARIAN_BULGARIA.CL8MSWIN1251
Catalan	CATALAN_CATALONIA.WE8MSWIN1252
Chinese (PRC)	SIMPLIFIED CHINESE_CHINA.ZHS16GBK
Chinese (Taiwan)	TRADITIONAL CHINESE_TAIWAN.ZHT16MSWIN950
Chinese (Hong Kong HKCS)	TRADITIONAL CHINESE_HONG KONG.ZHT16HKSCS
Chinese (Hong Kong HKCS2001)	TRADITIONAL CHINESE_HONG KONG.ZHT16HKSCS2001
Croatian	CROATIAN_CROATIA.EE8MSWIN1250
Czech	CZECH_CZECH REPUBLIC.EE8MSWIN1250
Danish	DANISH_DENMARK.WE8MSWIN1252
Dutch (Netherlands)	DUTCH_THE NETHERLANDS.WE8MSWIN1252
Dutch (Belgium)	DUTCH_BELGIUM.WE8MSWIN1252
English (United Kingdom)	ENGLISH_UNITED KINGDOM.WE8MSWIN1252
English (United States)	AMERICAN_AMERICA.WE8MSWIN1252
English (United States)	AMERICAN_AMERICA.WE8ISO8859P9
English (United States)	AMERICAN_AMERICA.AL32UTF8
Estonian	ESTONIAN_ESTONIA.BLT8MSWIN1257
Finnish	FINNISH_FINLAND.WE8MSWIN1252
French (Canada)	CANADIAN FRENCH_CANADA.WE8MSWIN1252
French (France)	FRENCH_FRANCE.WE8MSWIN1252
German (Germany)	GERMAN_GERMANY.WE8MSWIN1252
Greek	GREEK_GREECE.EL8MSWIN1253
Hebrew	HEBREW_ISRAEL.IW8MSWIN1255
Hungarian	HUNGARIAN_HUNGARY.EE8MSWIN1250
Icelandic	ICELANDIC_ICELAND.WE8MSWIN1252
Indonesian	INDONESIAN_INDONESIA.WE8MSWIN1252
Italian (Italy)	ITALIAN_ITALY.WE8MSWIN1252
Japanese	JAPANESE_JAPAN.JA16SJIS
Korean	KOREAN_KOREA.KO16MSWIN949
Latvian	LATVIAN_LATVIA.BLT8MSWIN1257
Lithuanian	LITHUANIAN_LITHUANIA.BLT8MSWIN1257
Norwegian	NORWEGIAN_NORWAY.WE8MSWIN1252

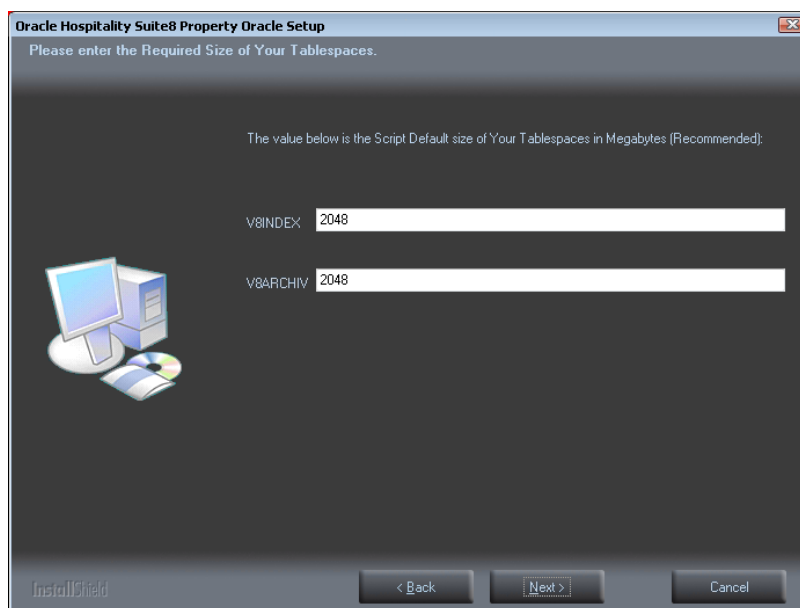
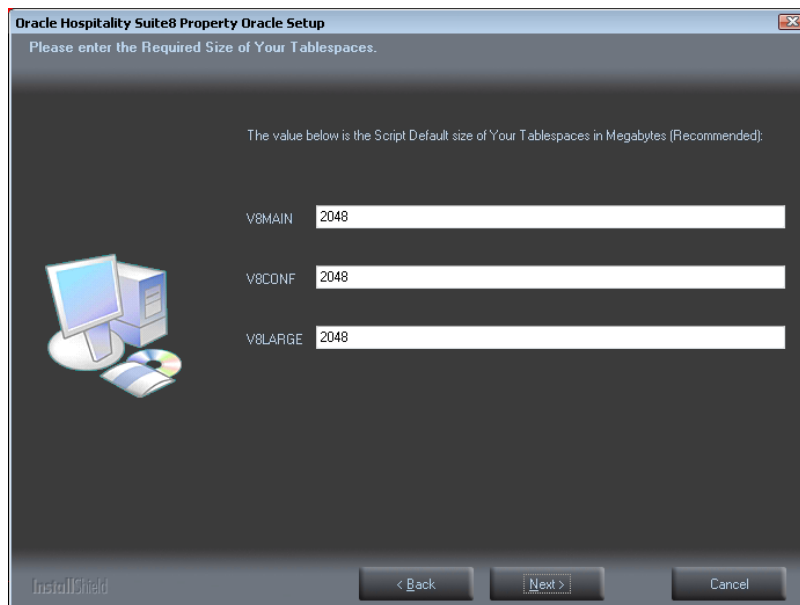
Polish	POLISH_POLAND.EE8MSWIN1250
Portuguese (Brazil)	BRAZILIAN PORTUGUESE_BRAZIL.WE8MSWIN1252
Portuguese (Portugal)	PORTUGUESE_PORTUGAL.WE8MSWIN1252
Romanian	ROMANIAN_ROMANIA.EE8MSWIN1250
Russian	RUSSIAN_CIS.CL8MSWIN1251
Slovak	SLOVAK_SLOVAKIA.EE8MSWIN1250
Spanish (Spain)	SPANISH_SPAIN.WE8MSWIN1252
Swedish	SWEDISH_SWEDEN.WE8MSWIN1252
Thai	THAI_THAILAND.TH8TISASCII
Spanish (Mexico)	MEXICAN SPANISH_MEXICO.WE8MSWIN1252
Spanish (Venezuela)	LATIN AMERICAN SPANISH_VENEZUELA.WE8MSWIN1252
Turkish	TURKISH_TURKEY.TR8MSWIN1254
Ukrainian	UKRAINIAN_UKRAINE.CL8MSWIN1251
Vietnamese	VIETNAMESE_VIETNAM.VN8MSWIN1258



Note: If you want to create an Oracle Database with Multilingual support (UNICODE), please use the NLS_CHARACTER_SET: AL32UTF8 (e.g. **AMERICAN_AMERICA.AL32UTF8**) and the NLS_NCHAR_CHARACTERSET: AL16UTF16.

21. Enter the size for the Oracle Suite8 tablespace files. The default size for each tablespace is: **2048 (MB)**. Click **Next** to continue.

Note: Each Suite8 tablespace file is automatically expanded to 32 GB.

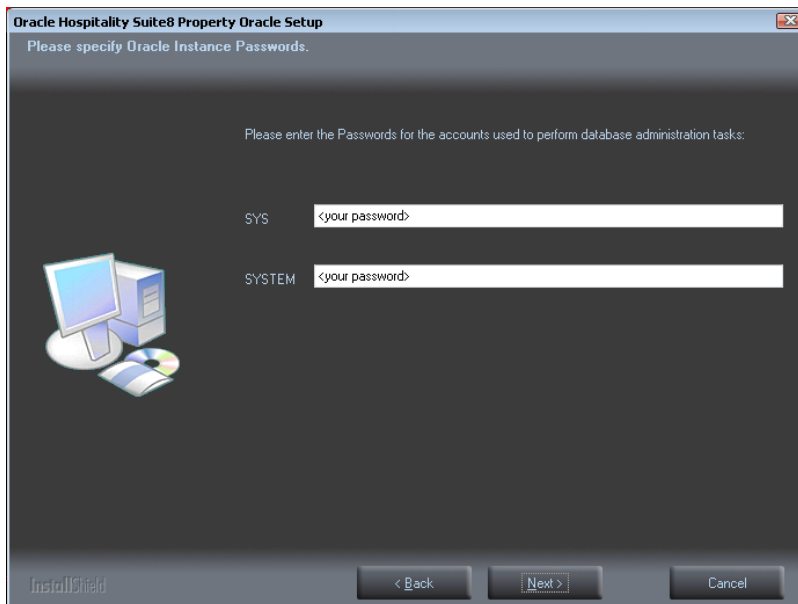


22. If you have **not selected** the **Oracle 12c Multitenant Database** option, the following step requires the complex password to be entered for the Oracle SYS and SYSTEM account. Click **Next** to continue.

Complexity requirements are:

- Not to contain the user's account name or parts of the user's full name that exceed two consecutive characters
- Minimum password length of 8 characters
- First character of password **MUST** be a character
- Password must contain at least 1 Lowercase character (a through z)
- Password must contain at least 1 Uppercase character (A through Z)

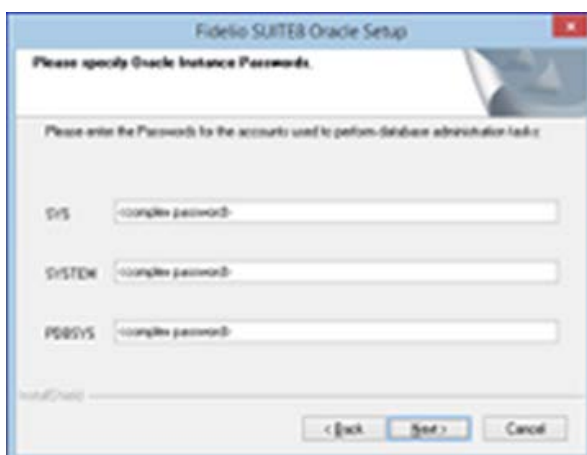
- Password must contain at least 1 digit (0 through 9)
- Password can contain special character: !*()_+{[]}@~#.,



23. If you have **selected** the **Oracle 12c Multitenant Database** option, the following step requires the complex password to be entered for the Oracle SYS, SYSTEM and PDBSYS account. Click **Next** to continue.

Complexity requirements are:

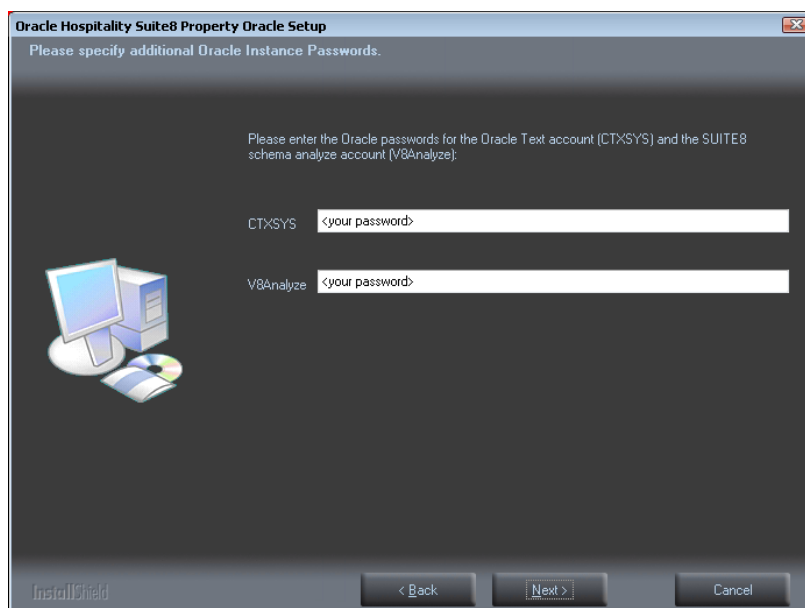
- Not to contain the user's account name or parts of the user's full name that exceed two consecutive characters
- Minimum password length of 8 characters
- First character of password **MUST** be a character
- Password must contain at least 1 Lowercase character (a through z)
- Password must contain at least 1 Uppercase character (A through Z)
- Password must contain at least 1 digit (0 through 9)
- Password can contain special character: !*()_+{[]}@~#.,



24. The following step requires the complex password to be entered for the Oracle CTXSYS and SUITE8 Analyzer account. Click **Next** to continue.

Complexity requirements are:

- Not to contain the user's account name or parts of the user's full name that exceed two consecutive characters
- Minimum password length of 8 characters
- First character of password **MUST** be a character
- Password must contain at least 1 Lowercase character (a through z)
- Password must contain at least 1 Uppercase character (A through Z)
- Password must contain at least 1 digit (0 through 9)
- Password can contain special character: !*()_+{[]}@~#.,



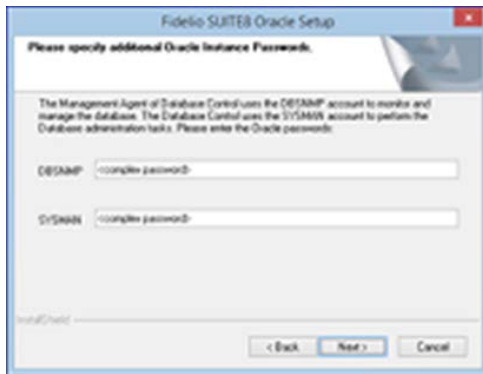
Note: The Oracle user account CTXSYS is required for the Oracle Database feature: Oracle Text.

25. If you install an **Oracle 11g Database**, the following step requires the complex password to be entered for the Oracle DBSNMP and SYSMAN account. Click **Next** to continue.

Complexity requirements are:

- Not to contain the user's account name or parts of the user's full name that exceed two consecutive characters
- Minimum password length of 8 characters
- First character of password **MUST** be a character
- Password must contain at least 1 Lowercase character (a through z)
- Password must contain at least 1 Uppercase character (A through Z)
- Password must contain at least 1 digit (0 through 9)

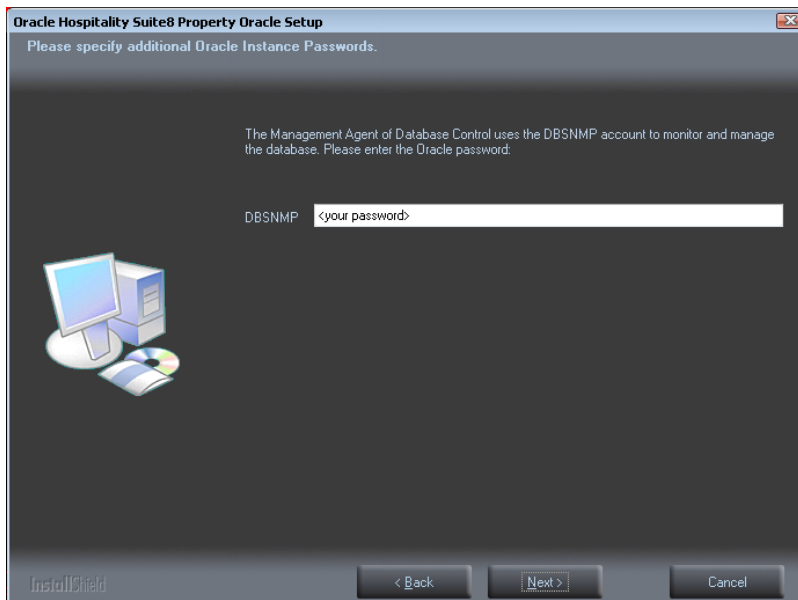
- Password can contain special character: !*()_+{[]}@~#.,



26. If you install an **Oracle 12c Database**, the following step requires the complex password to be entered for the Oracle DBSNMP account. Click **Next** to continue.

Complexity requirements are:

- Not to contain the user's account name or parts of the user's full name that exceed two consecutive characters
- Minimum password length of 8 characters
- First character of password **MUST** be a character
- Password must contain at least 1 Lowercase character (a through z)
- Password must contain at least 1 Uppercase character (A through Z)
- Password must contain at least 1 digit (0 through 9)
- Password can contain special character: !*()_+{[]}@~#.,

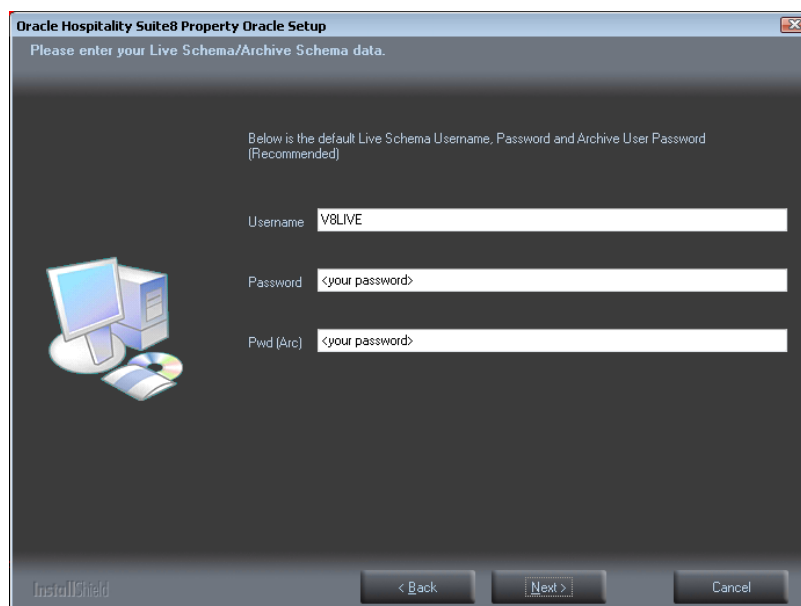


Note: The Management Agent of Database Control uses the DBSNMP account to monitor and manage the database. The Database Control uses the SYSMAN account to perform the Database administration tasks.

27. The following step requires the user and complex passwords to be entered to create the Suite8 live/Suite8 Archive live database account. Click **Next** to continue.

Complexity requirements are:

- Not to contain the user's account name or parts of the user's full name that exceed two consecutive characters
- Minimum password length of 8 characters
- First character of password **MUST** be a character
- Password must contain at least 1 Lowercase character (a through z)
- Password must contain at least 1 Uppercase character (A through Z)
- Password must contain at least 1 digit (0 through 9)
- Password can contain special character: !*()_+{[]}@~#.,



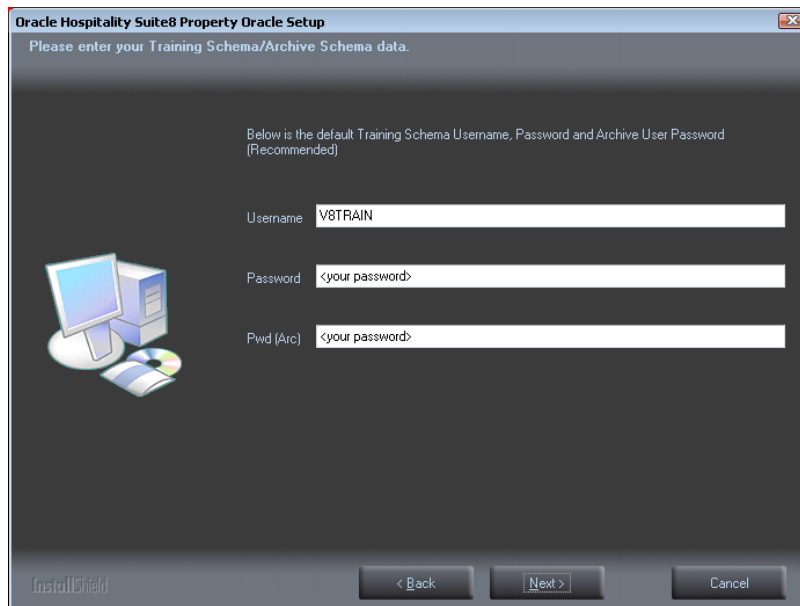
Note: We are creating the Oracle user account: V8LIVE with the complex password. In addition we also creating a Oracle user account: V8LIVEARC with the complex password. This user account is required for the SUITE8 Archive functionality.

28. The next step is similar to the previous step, but requires the username and complex passwords to create the Suite8 training/Suite8 Archive training database account. Click **Next** to continue.

Complexity requirements are:

- Not to contain the user's account name or parts of the user's full name that exceed two consecutive characters
- Minimum password length of 8 characters
- First character of password **MUST** be a character
- Password must contain at least 1 Lowercase character (a through z)

- Password must contain at least 1 Uppercase character (A through Z)
- Password must contain at least 1 digit (0 through 9)
- Password can contain special character: !*()_+{[]}@~#.,



Oracle Hospitality Suite8 Property Oracle Setup

Please enter your Training Schema/Archive Schema data.

Below is the default Training Schema Username, Password and Archive User Password (Recommended)

Username: V8TRAIN

Password: <your password>

Pwd (Arc): <your password>

Back Next > Cancel

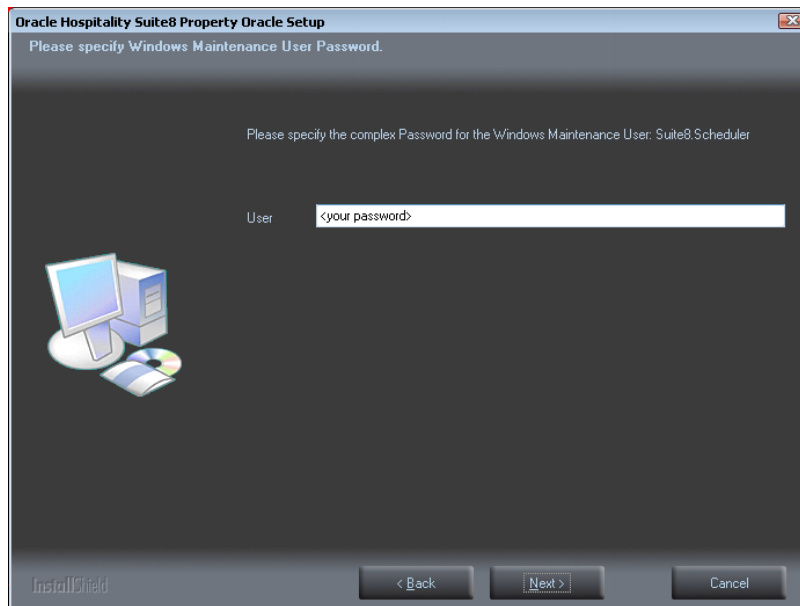


Note: We are creating the Oracle user account: V8TRAIN with the complex password. In addition we also creating a Oracle user account: V8TRAINARC with the complex password. This user account is required for the SUITE8 Archive functionality.

29. The following step requires the complex password to be entered for the Windows User account (Suite8.Scheduler) for the SUITE8 Maintenance jobs. Click **Next** to continue.

Complexity requirements are:

- Not to contain the user's account name or parts of the user's full name that exceed two consecutive characters
- Minimum password length of 12 characters
- First character of password **MUST** be a character
- Password must contain at least 1 Lowercase character (a through z)
- Password must contain at least 1 Uppercase character (A through Z)
- Password must contain at least 1 digit (0 through 9)
- Password can contain special character: !*()_+{[]}@~#.,

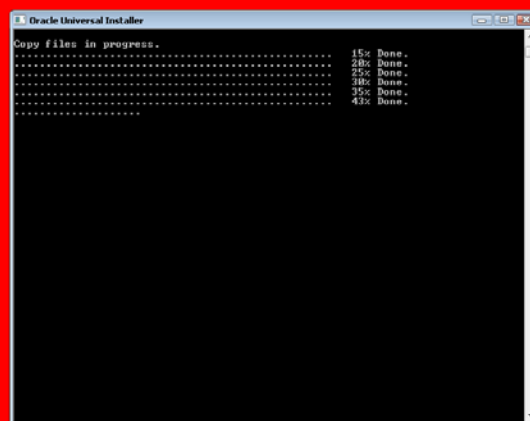


30. If you want to use 'Encrypted Passwords' for the maintenance scripts, which are created during the Oracle database setup routine – click **YES** to continue. The default is: **NO**.

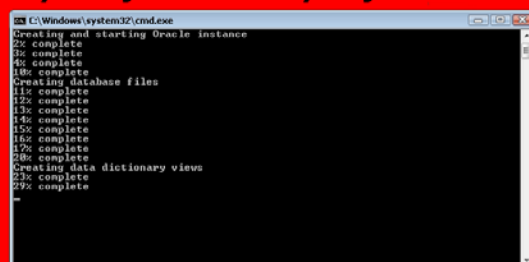


The setup program now installs the Oracle Database and the Patch for the Oracle Database, creates the Suite8 instance and imports the Suite8 demo schema.

Oracle Hospitality Suite8 Property Oracle Setup (64bit)



Oracle Hospitality Suite8 Property Oracle Setup (64bit)



31. After the installation of the Oracle Database the install shield performs the following tasks:

Creates the following directories on the MAINTENANCE drive (for example: D:\):

\BACKUP
\BACKUP.RMAN\SCRIPTS
\BACKUP.RMAN\LOG
\EXP\DAIY

Copies the maintenance scripts to the directory: \BACKUP.RMAN\SCRIPTS

Creates the Windows user account: Suite8.Scheduler
and

Adds the Windows user: Suite8.Scheduler to the local group: ADMINISTRATORS

Modifying the environment parameters for the Oracle Recovery Manager (RMAN)

Oracle RMAN Backup files are located in the directory: \BACKUP

Maintenance scripts are located in the directory: \BACKUP.RMAN\SCRIPTS

Maintenance log files are located in the directory: \BACKUP.RMAN\LOG

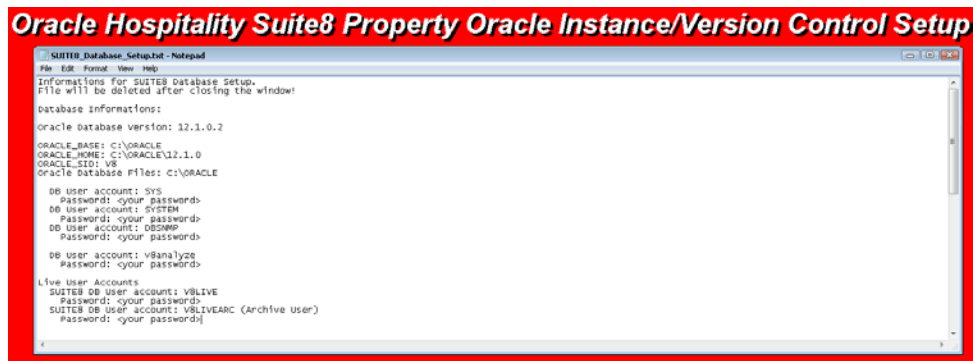
Creating 5 scheduled jobs:

- SUITE8 db schema analyze
Every day at 2:15 am the scheduled task is running the DBMS_STATS package to collecting statistics for all tables and indexes of the V8LIVE user.
- SUITE8 db clean log files
Every day at 0:05 am the scheduled task is cleaning the Oracle Dump folders, creating a copy of the Database Alert file and creating a copy of the LISTENER Log file.
- RMAN backup database
Every day at 11:00 pm the scheduled task is creating a complete backup of the Oracle Database via Oracle Recovery Manager (RMAN). After this the scheduled task is deleting all Oracle Database Backups – older than the latest successfully Oracle Database Backup.
- RMAN backup archive
Every 3 hours the scheduled task is creating a backup of all Oracle Database Archives - via Oracle Recovery Manager (RMAN) - which are not backed up for 2 times. After this the scheduled task is deleting all Oracle Archive Backups – older than the latest successfully Oracle Database Backup.
- RMAN maintenance
Every day at 09:15 pm the scheduled task is checking the Oracle Database/Archive Backups via Oracle Recovery Manager (RMAN). The Task is looking for obsolete and not existing Backups and deleting not required Oracle Archives

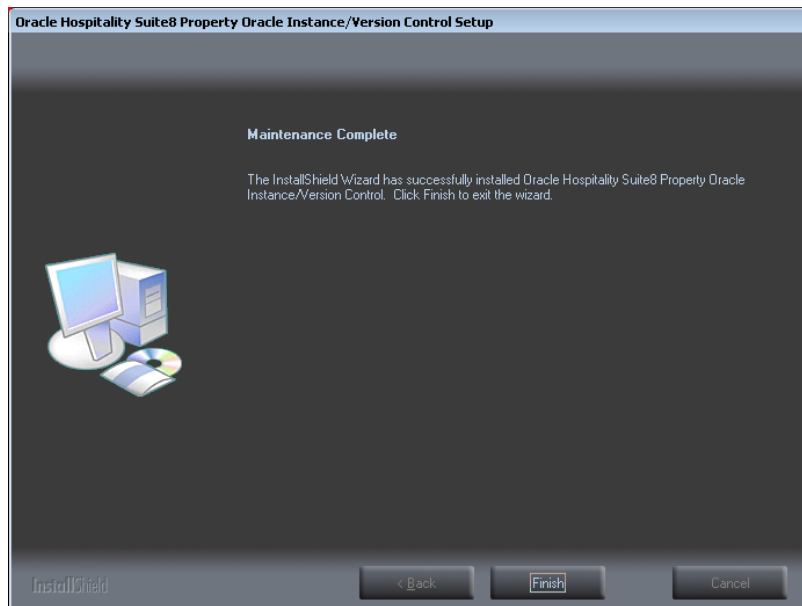
32. The Oracle Database install shield wizard prompts a message upon completion. Click **OK** to continue.



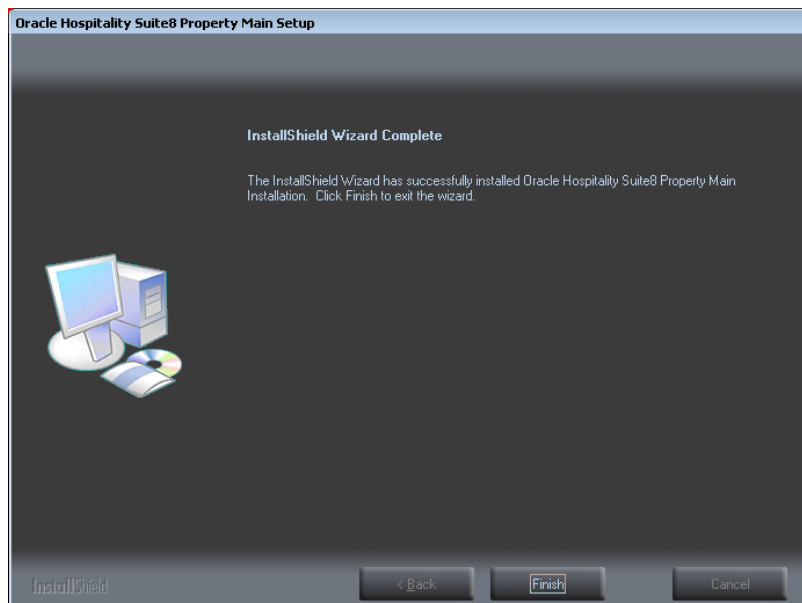
33. The following step will show an overview of the Oracle Database installation. Please save the document. After closing the Text file, the file will be deleted! Close the file to continue.



34. Click **Finish** to exit the Fidelio Suite8 Oracle Database Install shield Wizard.



35. Click **Finish** to exit the Install shield Wizard.



Activation of Oracle Wallet

The following steps have to be completed to activate Oracle Wallet:

1. Create a folder for the wallet, recommended in the Oracle base directory, for example
C:\ORACLE\ADMIN\V8\WALLET
2. Add the entry below to SQLNET.ORA (e.g. for 11g SQLNET.ORA is located here
C:\oracle\11.2.0\DATABASE\network\admin)
->DIRECTORY should be the path to the WALLET folder created in the previous step.
`ENCRYPTION_WALLET_LOCATION = (SOURCE =
 (METHOD = FILE)
 (METHOD_DATA =
 (DIRECTORY = C:\ORACLE\ADMIN\V8\WALLET)))`
3. Restart the DB.
4. Connect as sys and execute the following statement to set the encryption key (where
"PLACE_YOUR_PASSWORD_HERE" is the encryption key - it is strongly
recommended to keep this key in a safe place):
`ALTER SYSTEM SET ENCRYPTION KEY IDENTIFIED by
"PLACE_YOUR_PASSWORD_HERE";`
5. Set wallet open (activate global encryption): `ALTER SYSTEM SET ENCRYPTION
WALLET OPEN IDENTIFIED BY "PLACE_YOUR_PASSWORD_HERE";`
6. Connect to live schema, for example V8LIVE and execute below statements
`ALTER TABLE wpvt MODIFY (wpvt_value ENCRYPT USING 'AES256' SALT);
ALTER TABLE xccs MODIFY (xccs_number ENCRYPT USING 'AES256' SALT);`
7. Each restart of the database requires the wallet to be opened again
`ALTER SYSTEM SET WALLET OPEN IDENTIFIED by
"PLACE_YOUR_PASSWORD_HERE";`
8. Useful Tips:
 - * To check the status (connected as sys): `SELECT * FROM V$ENCRYPTION_WALLET;`
 - * To close the wallet (for testing purpose): `ALTER SYSTEM SET ENCRYPTION
WALLET CLOSE IDENTIFIED BY "PLACE_YOUR_PASSWORD_HERE";`

Note: The Oracle Wallet functionality used for compliance with PA-DSS 3.1 is not supported with Oracle 10g. See point 8 of post-upgrade tasks for the required versions.

Security Guidelines: In order to fulfill the PA-DSS Certification 3.1 the protected data (XCCS->XCCS_NUMBER and WPRT ->WPRT_VALUE) will be encrypted with Oracle Wallet. If Oracle Wallet is not active or the fields are not encrypted, Suite 8 will not start and the message 'Please activate the oracle wallet' will appear.

Oracle Database Control

After the installation you can use Oracle Database Control to manage the Database.

Oracle 11gR2 Database:

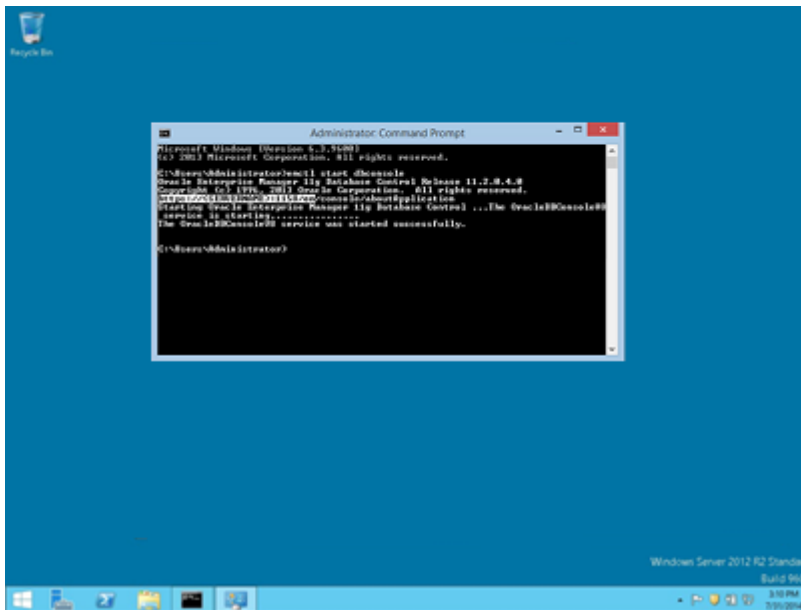
1. Open a command prompt (with the option **Run as administrator**).

Type the following commands to start the Oracle Database Control Service:

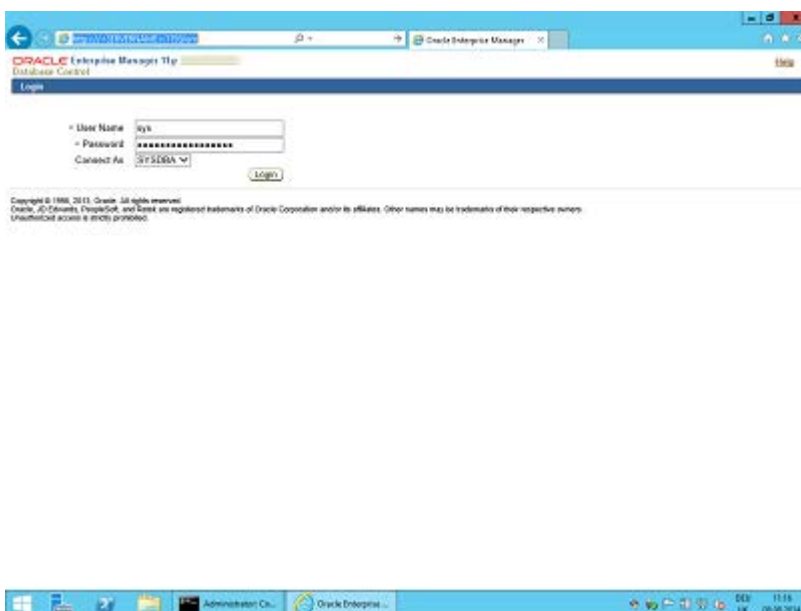
SET ORACLE_UNQNAME=V8

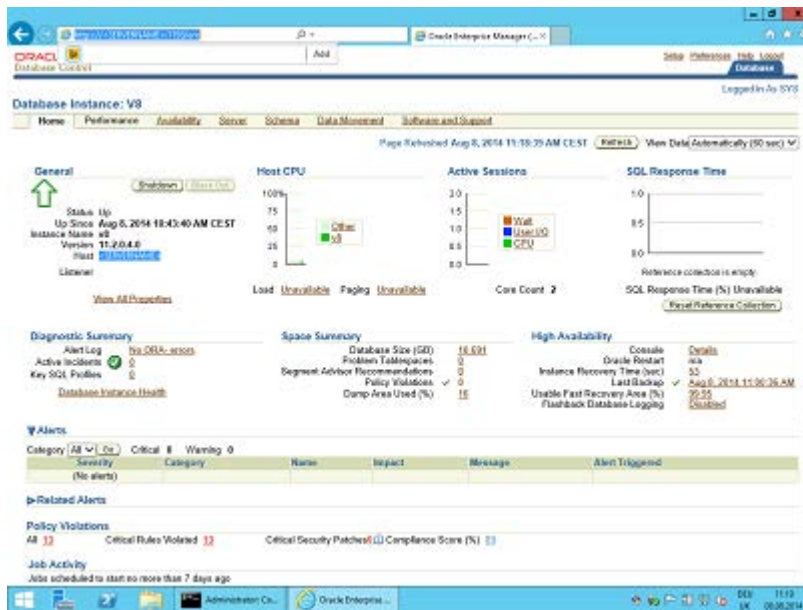
SET ORACLE_SID=V8

emctl start dbconsole



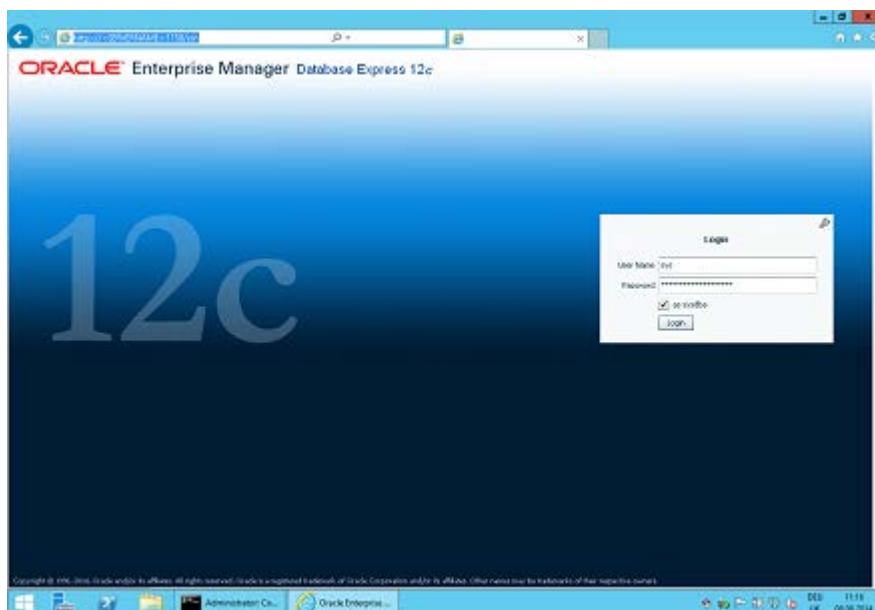
2. After starting the service open the Internet Explorer and access the Database Control Console by using the listed URL (<https://<SERVERNAME>:PORT/em>).

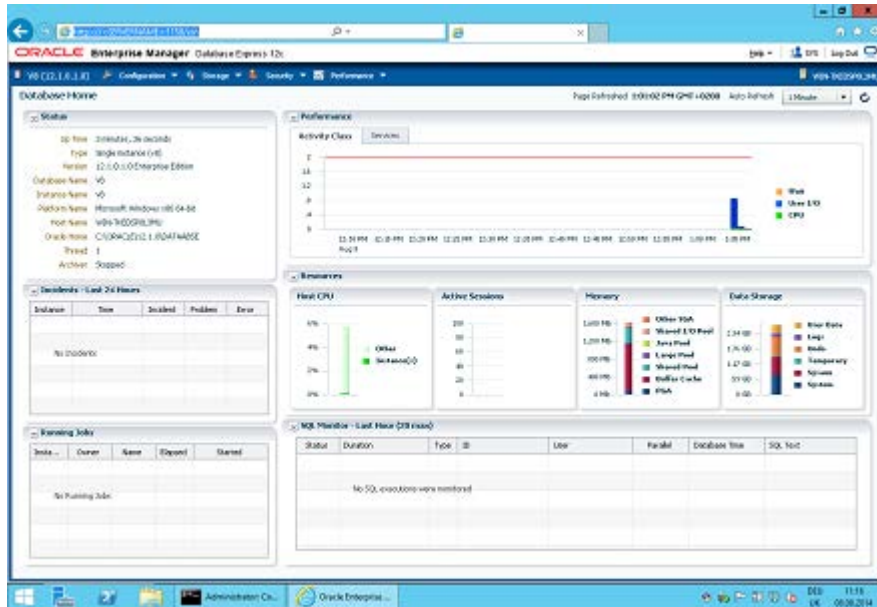




Oracle 12cR1 Database:

1. Open the Internet Explorer and access the Database Control Console by using the URL:
<https://<SERVERNAME>:5608/em>.

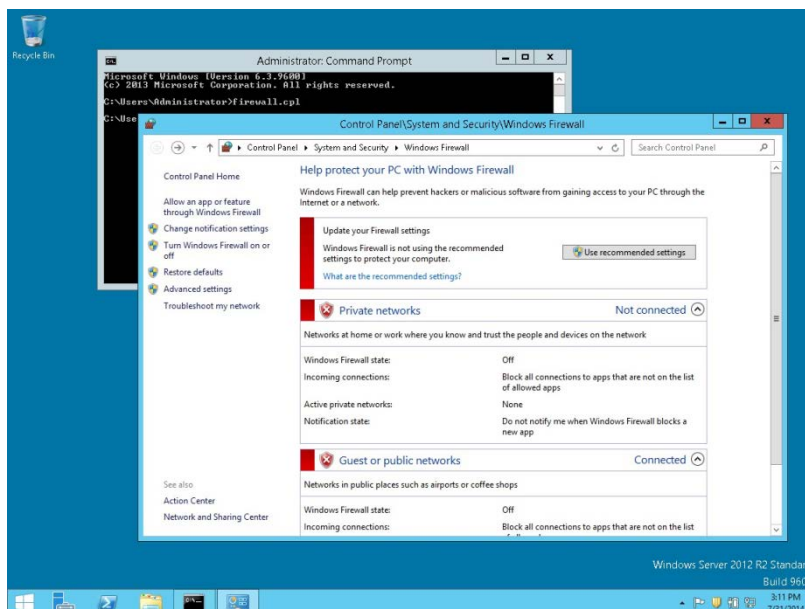




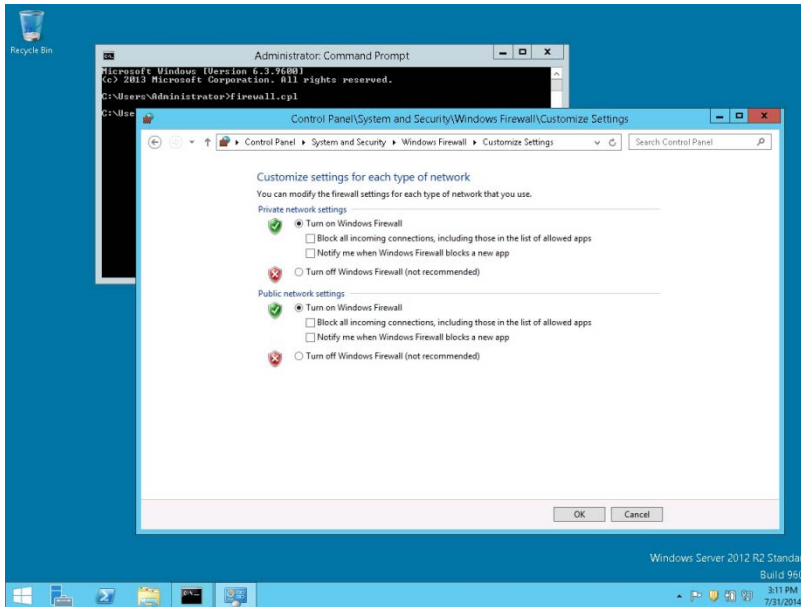
Enable the Firewall

After the installation, it is necessary to enable the Windows Firewall and the UAC (User Account Control) again .

1. Open a command prompt (with the option **Run as administrator** and type **firewall.cpl** to launch the Firewall Configuration utility.
2. In the Firewall Control Panel, click **Turn Windows Firewall on or off** (upper left hand corner of the window).



3. Select **Turn on Windows Firewall** in the **Windows Firewall Settings** window and click **OK** to save the changes.



4. Close the Firewall Configuration utility.
5. Enter the following commands to add the Oracle 11gR2 Executable and Oracle Listener IP Port to the Firewall:



Note: The program path depends on the directory for the Oracle Home during the Installation (for example: C:\ORACLE\11.2.0\DATABASE).

```
cd /D c:\windows\system32
```

```
netsh advfirewall firewall add rule name="Oracle TNSLSNR Port" dir=in action=allow protocol=TCP  
localport=1521
```

```
netsh advfirewall firewall add rule name="Oracle TNSLSNR Executable" dir=in  
program="c:\oracle\11.2.0\database\bin\tnslnr.exe" action=allow profile=any
```

```
netsh advfirewall firewall add rule name="Oracle RDBMS Kernel Executable" dir=in  
program="c:\oracle\11.2.0\database\bin\oracle.exe" action=allow profile=any
```

6. Enter the following commands to add the Oracle 12cR1 Executable and Oracle Listener IP Port to the Firewall:



Note: The program path depends on the directory for the Oracle Home during the Installation (for example: C:\ORACLE\12.1.0\DATABASE).

```
cd /D c:\windows\system32
```

```
netsh advfirewall firewall add rule name="Oracle TNSLSNR Port" dir=in action=allow protocol=TCP  
localport=1521
```

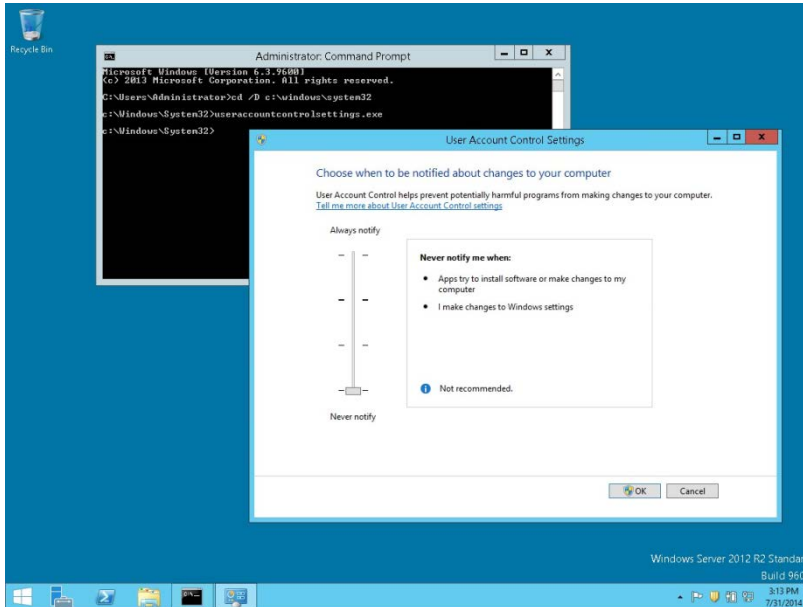
```
netsh advfirewall firewall add rule name="Oracle TNSLSNR Executable" dir=in  
program="c:\oracle\12.1.0\database\bin\tnslnr.exe" action=allow profile=any
```

```
netsh advfirewall firewall add rule name="Oracle RDBMS Kernel Executable" dir=in  
program="c:\oracle\12.1.0\database\bin\oracle.exe" action=allow profile=any
```

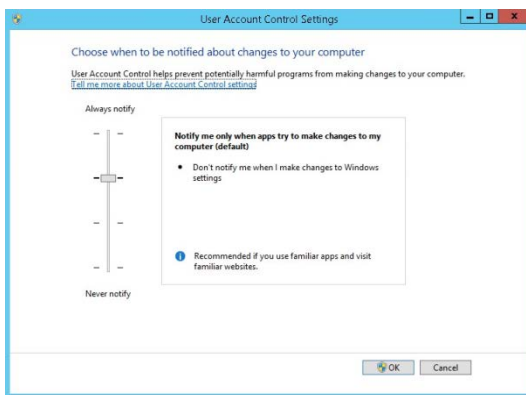
Enable User Access Control

1. Start the **User Access Control Configuration Assistant** by typing the following command:

```
cd /D c:\windows\system32  
useraccountcontrolsettings.exe
```



2. Turn on the notification by changing the UAC to **Default**. Click **OK** to save the changes.



Change the User Access Rights for the Oracle Database files

1. Open a command prompt (with the option **Run as administrator**).

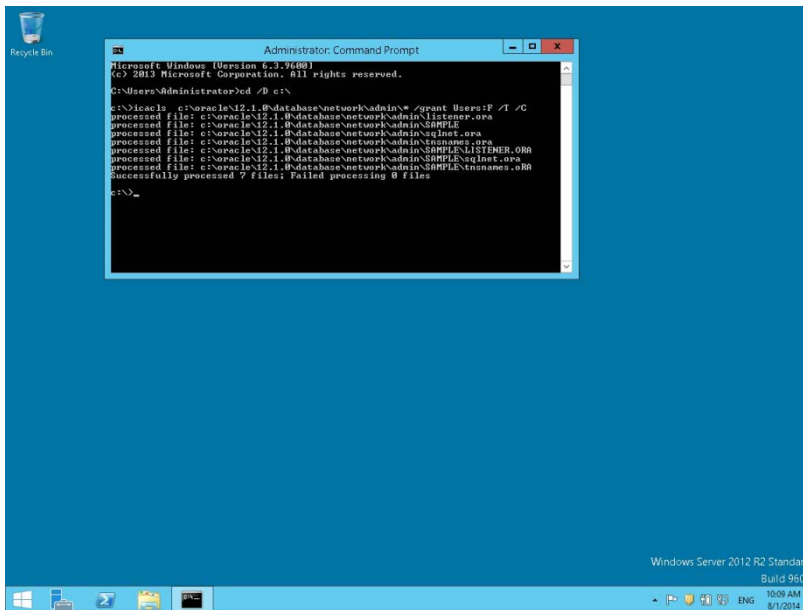
Type the following commands **for Oracle 12cR1 Database**:

```
cd /D c:\  
icacls c:\oracle\12.1.0\database\network\admin\* /grant Users:F  
/T /C
```

Type the following commands **for Oracle 11gR2 Database**:

```
cd /D c:\
```

```
icacfs c:\oracle\11.2.0\database\network\admin\* /grant Users:F  
/T /C
```



Note: For German installations, the following commands are used:

```
icacfs c:\oracle\1x.x.0\database\network\admin\* /grant  
Benutzer:F /T/C
```

How to import SUITE8 Data export into Oracle Database with Multilingual Support (UNICODE)

1. Download the following files from the SUITE8 FTP Server (directory: \Install_Shields\8_9_6_0\UNICODE) to a temporary directory, such as **C:\INSTALL**
UNICODEmviews.sql
UNICODEpost.sql
UNICODEpost_imp.sql
UNICODEpost_sys.sql
UNICODEpre.sql
UNICODEsequenceFIX.sql
UNICODEuser.sql
UNICODEuserarc.sql
UNICODE_change_columns.sql
2. Copy the SUITE8 Data Export file to the temporary directory, such as **C:\INSTALL**
3. Open a command prompt (with the option **Run as administrator**) and type the following commands to start the Oracle Import:



Note: The values for <sys password>, <system password> depends on the Oracle Database setup. For this example we are using the following SUITE8 User accounts: V8LIVE (password: live), V8LIVEARC (password: livearc). The SUITE8 accounts depends on the SUITE8 installation.

```

cd /D C:\install
SET ORACLE_HOME=C:\ORACLE\11.2.0\DATABASE
PATH=%ORACLE_HOME%\bin;%SystemRoot%\system32;%System
Root%;%SystemRoot%\System32\Wbem
DEL *.spl 1>NUL 2>NUL
SET NLS_LANG=AMERICAN_AMERICA.WE8MSWIN1252

: Create SUITE8 User account
sqlplus sys/<sys password>@V8 as sysdba @UNICODEuser.sql
V8LIVE live .\

: Import SUITE8 data structure only
imp.exe system/<system password>@V8 FROMUSER=V8LIVE
TOUSER=V8LIVE file=.\expV8LIVE.dmp BUFFER=10240000
LOG=.\impV8LIVE_1.SPL COMMIT=N ROWS=N

: Convert columns
sqlplus sys/<sys password>@V8 as sysdba @UNICODEuserarc.sql
V8LIVEARC livearc V8LIVE .\

sqlplus.exe V8LIVE/live@V8 @.\UNICODEpre.sql V8LIVE .\

sqlplus.exe sys/<sys password>@V8 as sysdba
@.\UNICODE_change_columns.sql .\ .\

sqlplus.exe sys/<sys password>@V8 as sysdba
@.\UNICODE_change.sql .\

sqlplus.exe V8LIVE/live@V8 @.\UNICODEpost.sql V8LIVE .\

: Import SUITE8 data
imp.exe system/<system password>@V8 FROMUSER=V8LIVE
TOUSER=V8LIVE file=.\expV8LIVE.dmp BUFFER=10240000
LOG=.\impV8LIVE_2.SPL IGNORE=Y

sqlplus.exe V8LIVE/live@V8 @.\UNICODEpost_imp.sql V8LIVE .\

sqlplus.exe V8LIVE/live@V8 @.\UNICODEmviews.sql .\

sqlplus.exe sys/<sys password>@V8 as sysdba
@.\UNICODEpost_sys.sql V8LIVE .\

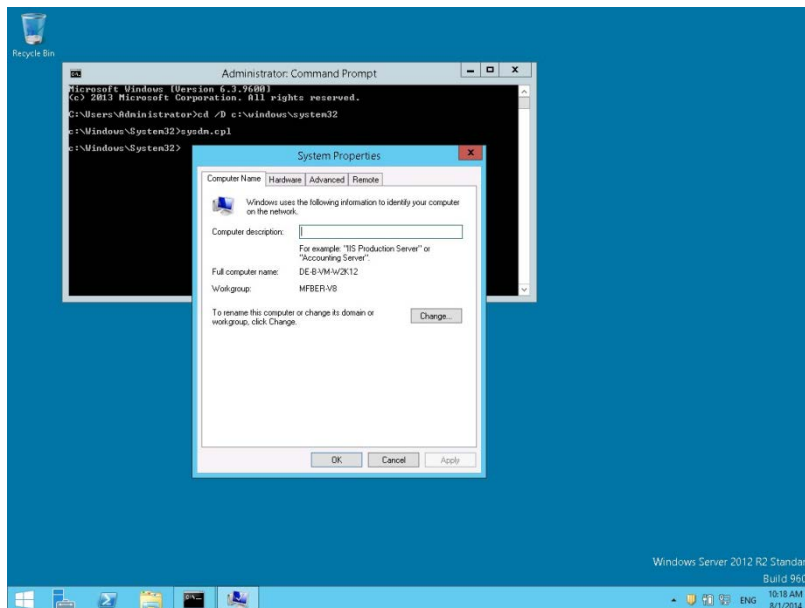
: Sequence fix
sqlplus.exe V8LIVE/live@V8 @.\UNICODEsequenceFIX.sql .\

```

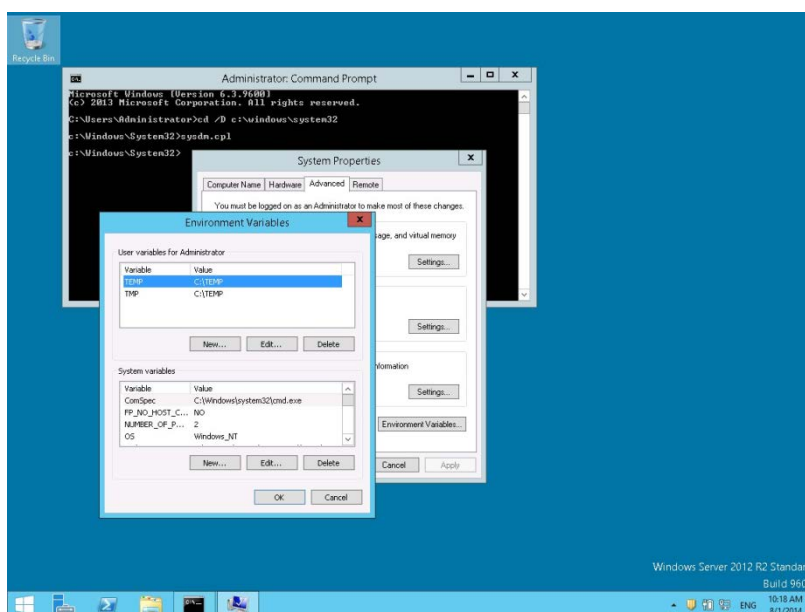
Change System Environment for Oracle Database (64-bit) & Oracle Client (32-bit)

1. If you install the Oracle Database (64-bit) on a Windows 64-bit Windows System and additionally the Oracle Client (32-bit) – the following changes are required:
2. Open a command prompt (with the option **Run as administrator**) and type the following commands to open the System Properties utility:

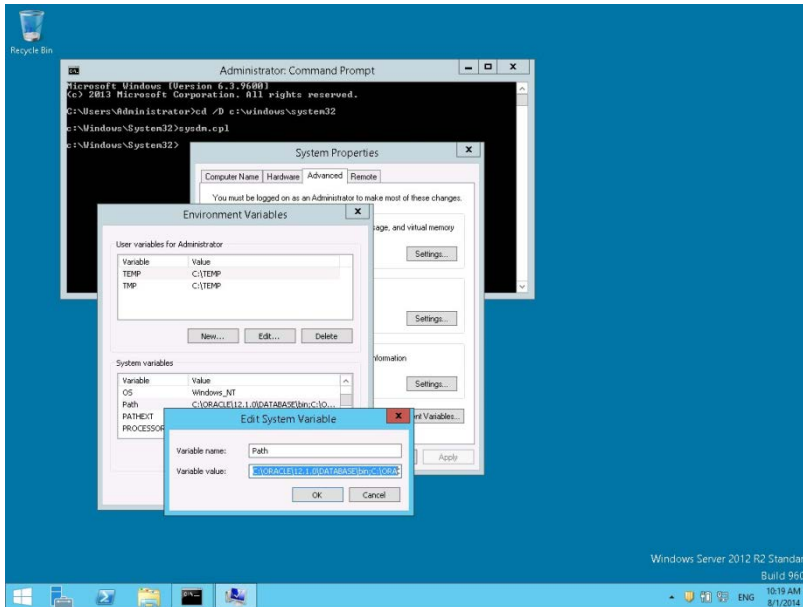
```
cd /D c:\windows\system32  
sysdm.cpl
```



3. Under the Advanced tab, click the Environment Variables button.

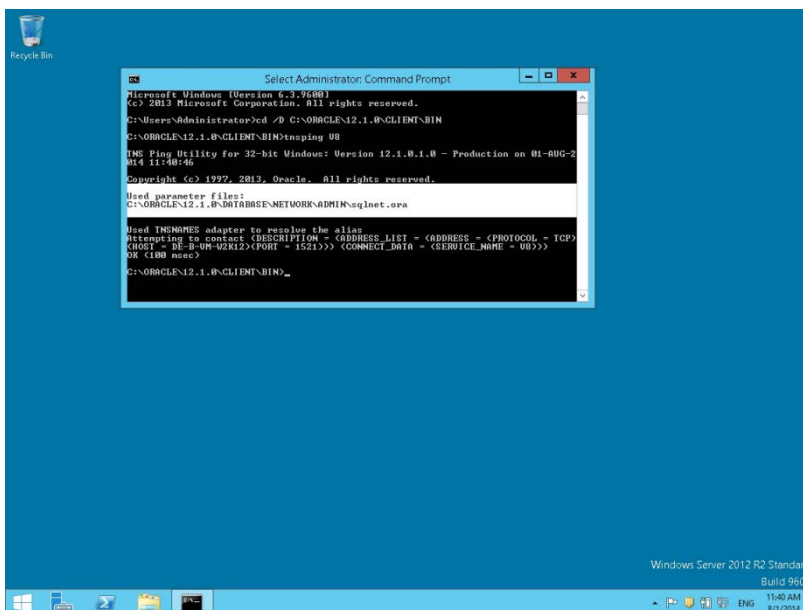


4. Select **Environment Variables** and modify the **PATH** variable into the SYSTEM ENVIRONMENT. The ORDER of the directories should be:
C:\ORACLE\1x.x.0\DATABASE\bin;C:\ORACLE\1x.x.0\CLIENT;%SYSTEMROOT%...



5. Click OK to save the changes. Close the System Properties utility.
6. Check the functionality by typing the following commands:

```
cd /D C:\ORACLE\1x.x.0\CLIENT\BIN  
tnsping V8
```



As a result, the Oracle Client should use the **Net8** files from the Oracle Database.
(Used parameter files: **C:\ORACLE\1x.x.0\DATABASE\network\admin\sqlnet.ora**)

Using Suite8 Database Server Shares



Note: If the Suite8 Environment is **NOT** using a Domain Controller, you can proceed with the following steps for Suite8 Version Control and Shared Suite8 Night Auditor Reports.

1. During the Suite8 Database Installation the Install shield has create two Windows Shares (VersionCtrl\$ and 1MFHOTEL\$) and one Windows user account (Suite8.VerCtrl) for using with Suite8 Version Control and Night Auditor Reports Share.
2. To use the Suite8 Version control, please create a script: V8VERSIONCTRL.CMD and place the script on the Public Desktop. The script should have the following content:

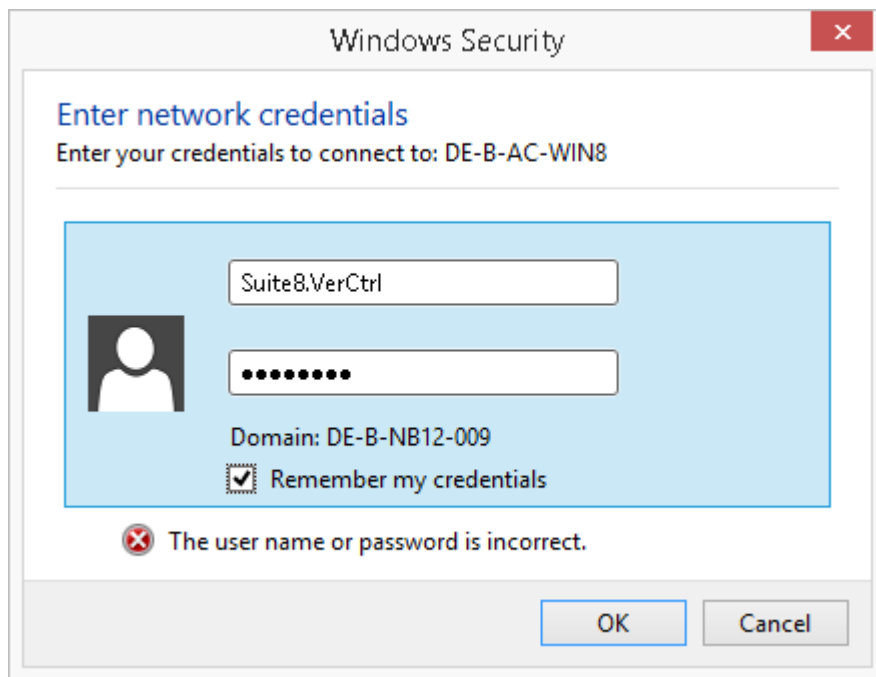


```
File Edit Format View Help
@ECHO OFF
@net use v: \\<SUITE8_DB_SERVER>\VERSIONCTRL$ /User:Suite8.VerCtrl <secure password> /persistent:no
@v:\versionctrl\VerCtrlV8.exe v:\versionctrl\VerCtrl.INI
@net use v: /delete /yes
```



Note: The Parameter **<SUITE8_DB_SERVER>** depends on used Oracle Server Name for the Suite8 Database Server. The parameter **<complex password>** depends on the used user account password.

3. Run the script for testing. If the system is asking for Login credentials, please enter as Login name: Suite8.VerCtrl and the secure password. Mark the option: **Remember my credentials**.



4. If the Suite8 Version detects missing Suite8 program files, the files will be copied to the local folder.



5. For using the Night Auditor Reports Share for the Suite8, open a command prompt and type the following command.

```
cd /D c:\
net use J: Error! Hyperlink reference not
valid.<SUITE8_DB_SERVER>\1MFHOTEL$
/User: <ORACLE_DB_SERVER>\Suite8.VerCtrl /persistent:yes
```

Note: The Parameter **<SUITE8_DB_SERVER>** depends on used Oracle Server Name for the Suite8 Database Server.




```
Command Prompt
Microsoft Windows [Version 6.3.9600]
(c) 2013 Microsoft Corporation. All rights reserved.

C:\Users\Suite8>net use J: \\DE-B-AC-WIN8\1MFHOTEL$ /User:DE-B-AC-WIN8\Suite8.VerCtrl /persistent:yes
Enter the password for 'DE-B-AC-WIN8\Suite8.VerCtrl' to connect to 'DE-B-AC-WIN8':
The command completed successfully.

C:\Users\Suite8>_
```

- After the command completed successfully, check the created drive mapping. Type the following command:

net use

```
Command Prompt
Microsoft Windows [Version 6.3.9600]
(c) 2013 Microsoft Corporation. All rights reserved.

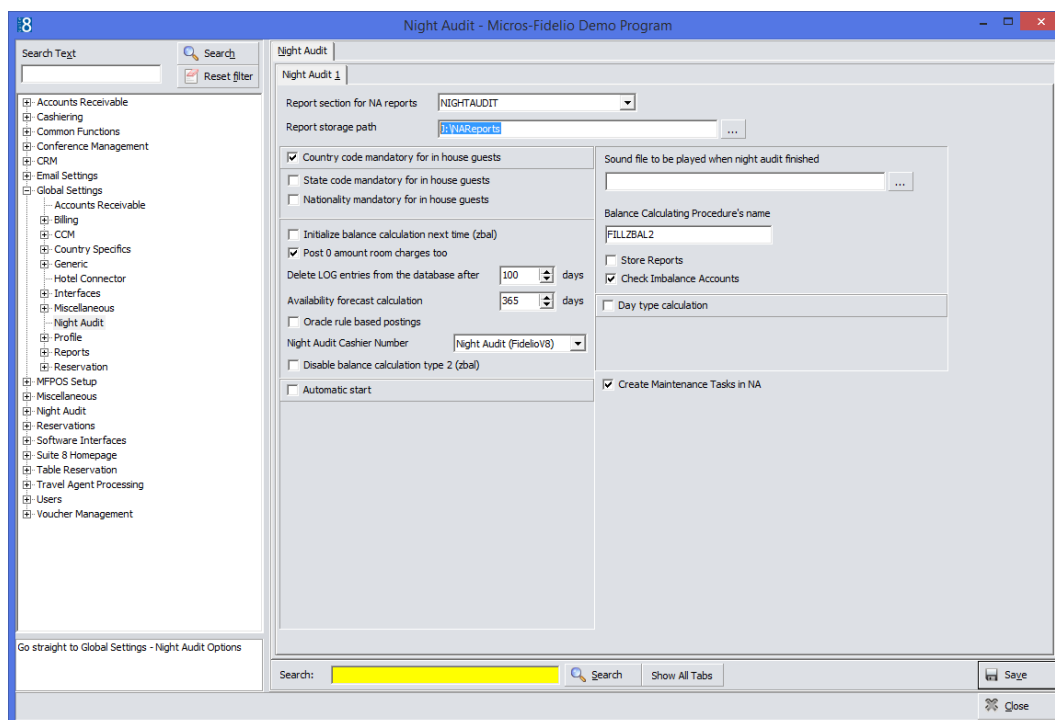
C:\Users\Suite8>net use J: \\DE-B-AC-WIN8\1MFHOTEL$ /User:DE-B-AC-WIN8\Suite8.VerCtrl /persistent:yes
Enter the password for 'DE-B-AC-WIN8\Suite8.VerCtrl' to connect to 'DE-B-AC-WIN8':
The command completed successfully.

C:\Users\Suite8>net use
New connections will be remembered.

Status          Local        Remote              Network
-----
OK              J:          \\DE-B-AC-WIN8\1MFHOTEL$  Microsoft Windows Network
The command completed successfully.

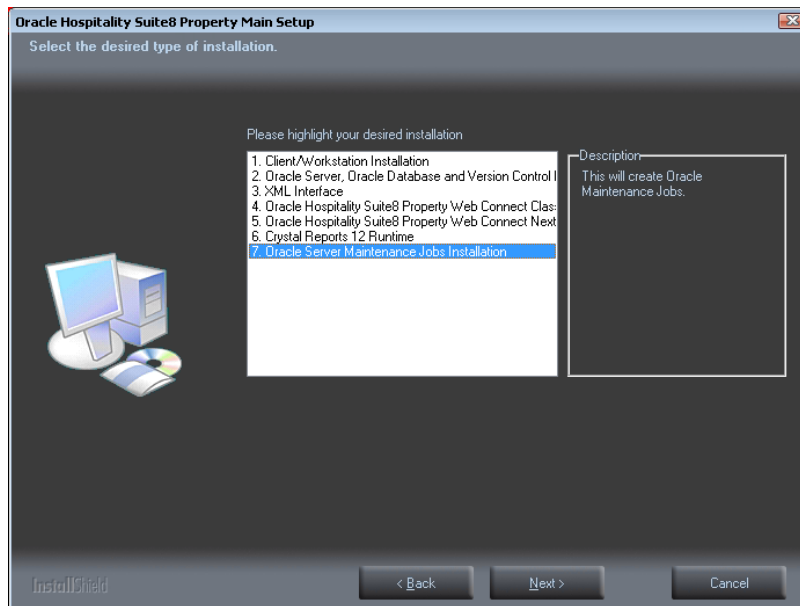
C:\Users\Suite8>
```

- Login to Suite8 and modify the location for the Suite8 Night Auditor Reports. Go to Setup | Configuration | Global Settings | Night Audit. Modify the REPORT STORAGE PATH to: J:\NAREports.

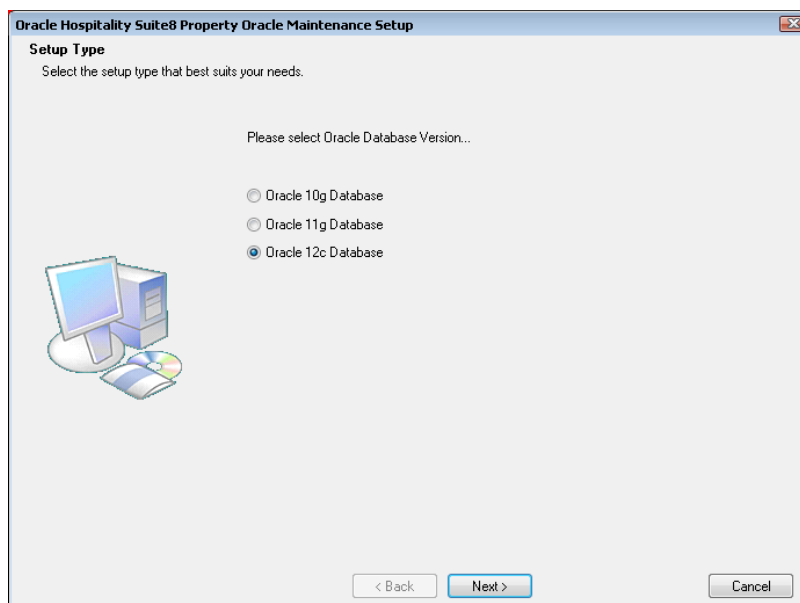


5 Install Oracle Server Maintenance Jobs

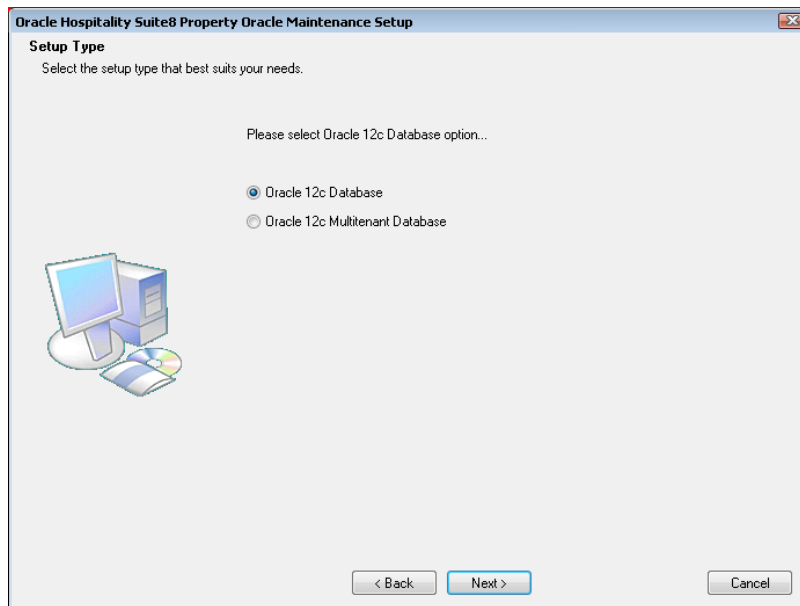
1. Select **Oracle Server Maintenance Jobs Installation** and click **Next** to continue.



2. The Oracle Server Maintenance Jobs Wizard is launched. Select the Oracle Database version. Click **Next** to continue.



3. If the selected Oracle Database type is **Oracle 12c Database**, the Database Type has to be selected. The following setup types are available:
 - Oracle 12c Database (Preferred)
 - Oracle 12c Multitenant Database

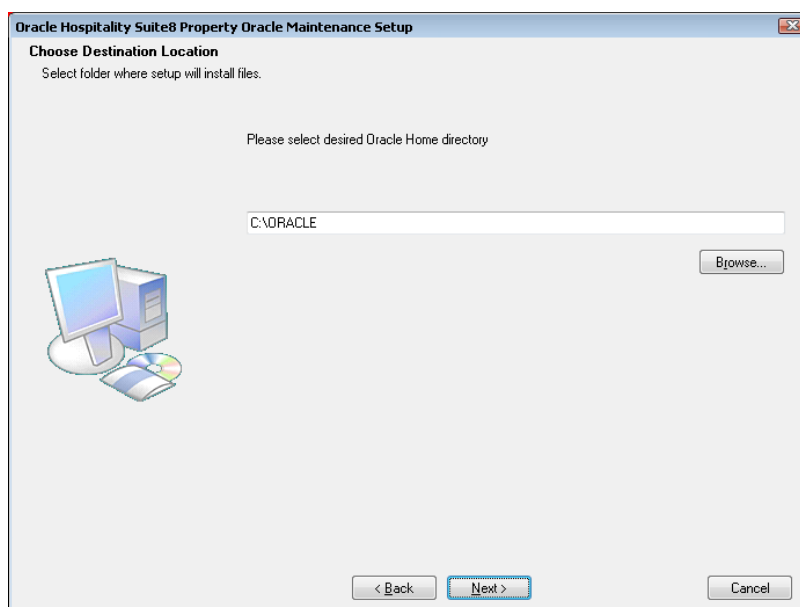


4. Enter the Oracle home directory for the Oracle Database. The default is: **C:\ORACLE**. Click **Next** to continue.

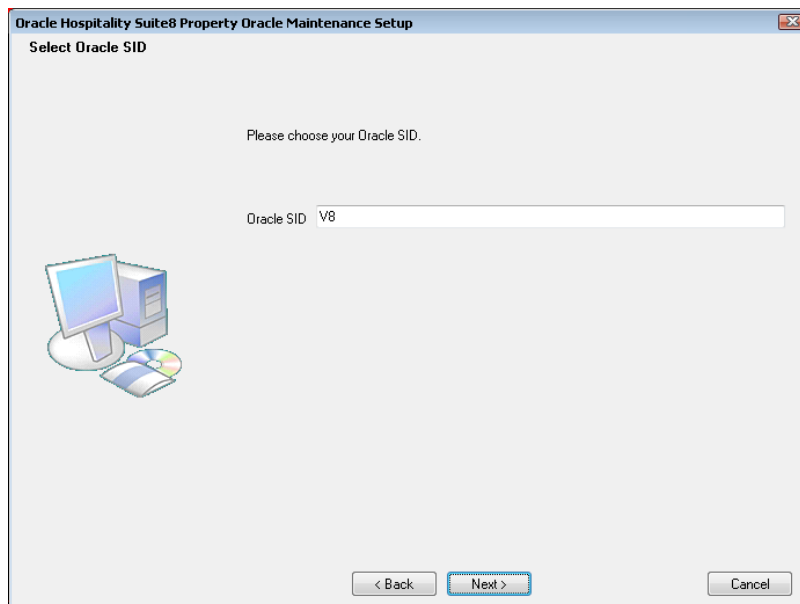
The ORACLE_HOME Destination depends on the selected Oracle Database version.



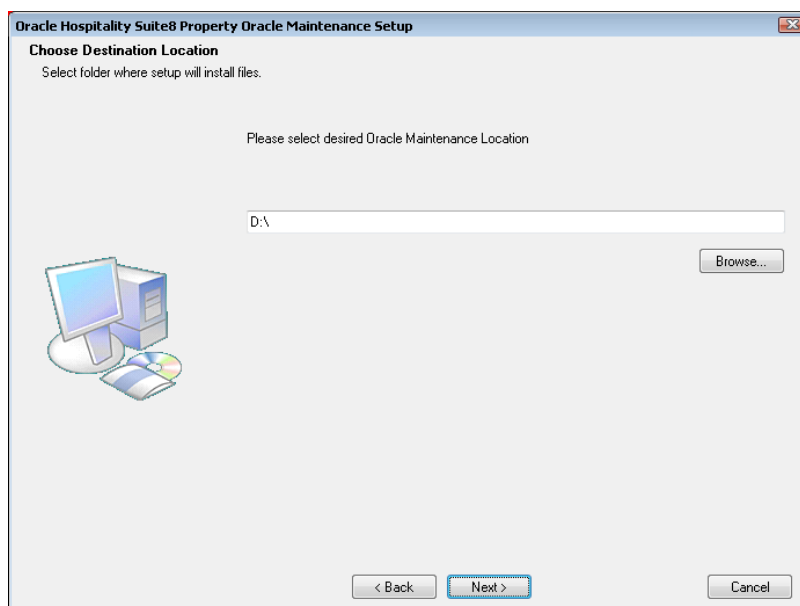
Example: For the **ORACLE Database Version 12.1.0.x**, the install shield uses **C:\ORACLE\12.1.0\DATABASE** as ORACLE_HOME.



5. Enter the value for the Oracle SID of the Oracle Database. The default Oracle SID is: **V8**. Click **Next** to continue.



6. Enter the destination for the Oracle Database Maintenance. The default is: **D:**. Click **Next** to continue.

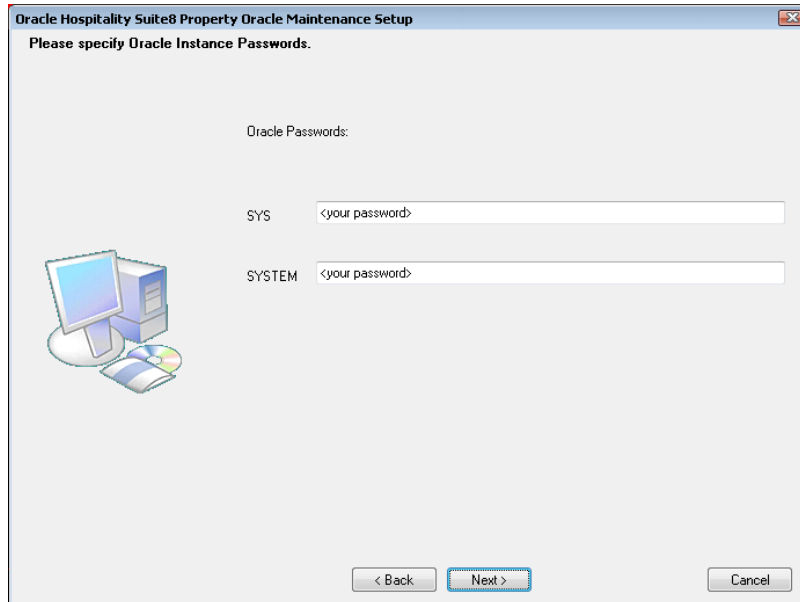


7. If you have **not selected** the **Oracle 12c Multitenant Database** option, the following step requires the complex password to be entered for the Oracle SYS and SYSTEM account. The password depends on the installed Oracle Database. Click **Next** to continue.

Complexity requirements are:

- Not to contain the user's account name or parts of the user's full name that exceed two consecutive characters
- Minimum password length of 8 characters
- First character of password **MUST** be a character

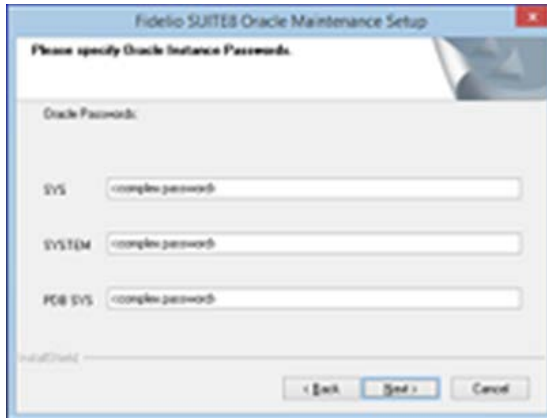
- Password must contain at least 1 Lowercase character (a through z)
- Password must contain at least 1 Uppercase character (A through Z)
- Password must contain at least 1 digit (0 through 9)
- Password can contain special character: !*()_+{[]}@~#.,




8. If you have **selected** the **Oracle 12c Multitenant Database** option, the following step requires the complex password to be entered for the Oracle SYS, SYSTEM and PDBSYS account. Click **Next** to continue.

Complexity requirements are:

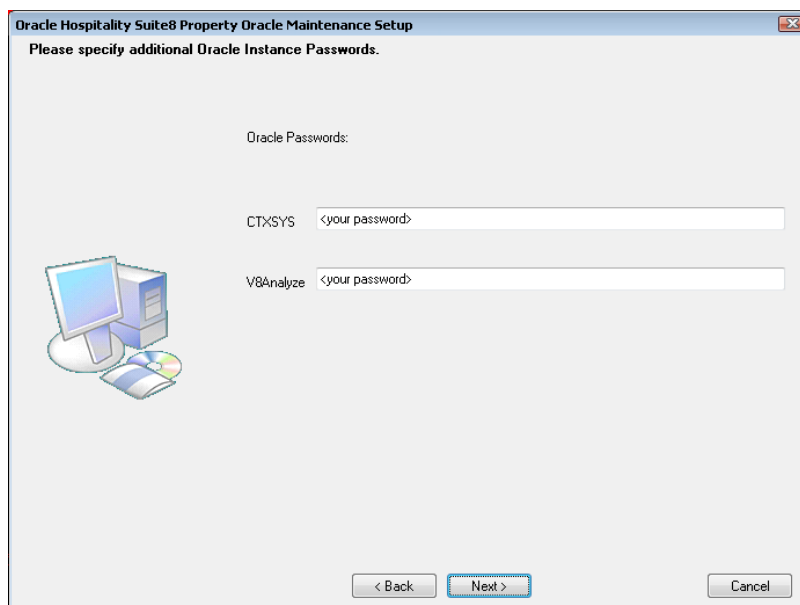
- Not to contain the user's account name or parts of the user's full name that exceed two consecutive characters
- Minimum password length of 8 characters
- First character of password **MUST** be a character
- Password must contain at least 1 Lowercase character (a through z)
- Password must contain at least 1 Uppercase character (A through Z)
- Password must contain at least 1 digit (0 through 9)
- Password can contain special character: !*()_+{[]}@~#.,



9. The following step requires the complex password to be entered for the Oracle CTXSYS and SUITE8 Analyzer account. Click **Next** to continue.

Complexity requirements are:

- Not to contain the user's account name or parts of the user's full name that exceed two consecutive characters
- Minimum password length of 8 characters
- First character of password **MUST** be a character
- Password must contain at least 1 Lowercase character (a through z)
- Password must contain at least 1 Uppercase character (A through Z)
- Password must contain at least 1 digit (0 through 9)
- Password can contain special character: !*()_+{[]}@~#.,

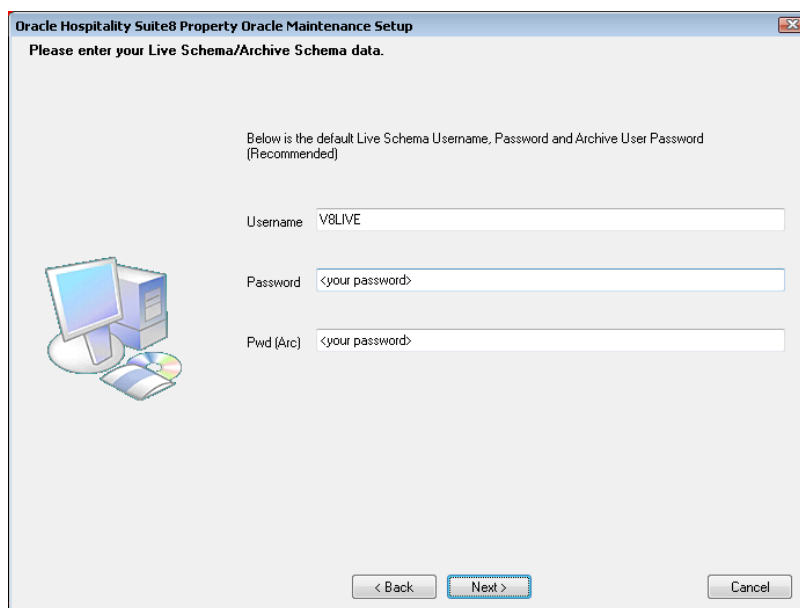


Note: The Oracle user account CTXSYS is required for the Oracle Database feature: Oracle Text.

10. The following step requires the user and complex passwords to be entered to run maintenance tasks logged on as Suite8 live/Suite8 Archive live user. Click **Next** to continue.

Complexity requirements are:

- Not to contain the user's account name or parts of the user's full name that exceed two consecutive characters
- Minimum password length of 8 characters
- First character of password **MUST** be a character
- Password must contain at least 1 Lowercase character (a through z)
- Password must contain at least 1 Uppercase character (A through Z)
- Password must contain at least 1 digit (0 through 9)
- Password can contain special character: !*()_+{[]}@~#.,

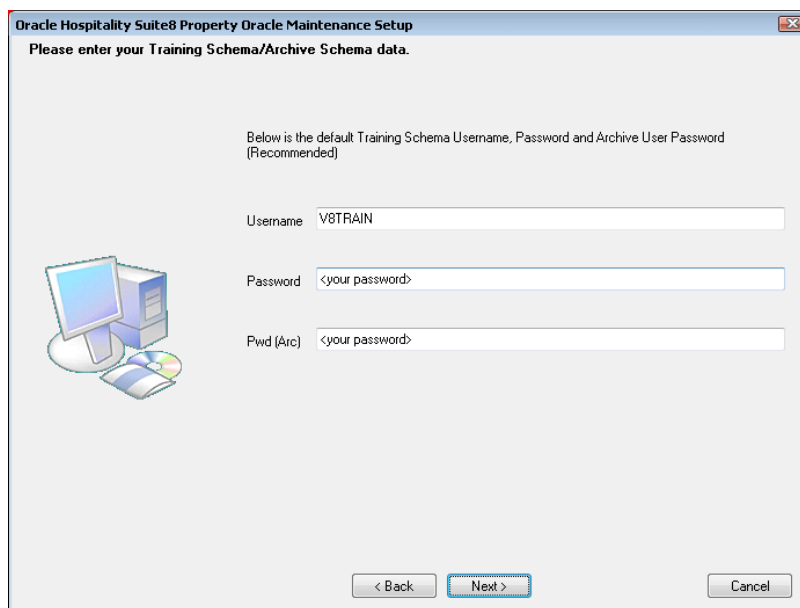


Note: We are creating the Oracle user account: V8LIVE with the complex password. In addition we also creating a Oracle user account: V8LIVEARC with the complex password. This user account is required for the SUITE8 Archive functionality.

11. The next step is similar to the previous step, but requires the username and complex passwords to run maintenance tasks logged on as Suite8 training/SUITE8 Archive training user. Click **Next** to continue.

Complexity requirements are:

- Not to contain the user's account name or parts of the user's full name that exceed two consecutive characters
- Minimum password length of 8 characters
- First character of password **MUST** be a character
- Password must contain at least 1 Lowercase character (a through z)
- Password must contain at least 1 Uppercase character (A through Z)
- Password must contain at least 1 digit (0 through 9)
- Password can contain special character: !*()_+{[]}@~#.,

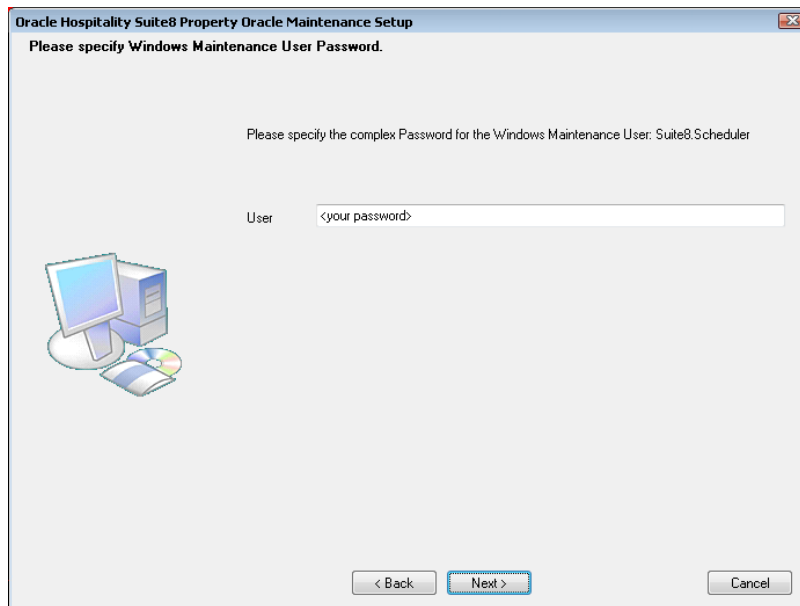


Note: We are creating the Oracle user account: V8TRAIN with the complex password. In addition we also creating a Oracle user account: V8TRAINARC with the complex password. This user account is required for the SUITE8 Archive functionality.

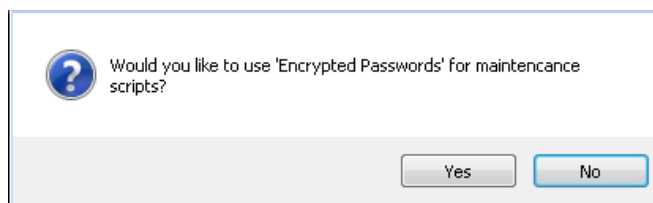
12. The following step requires the complex password to be entered for the Windows User account (Suite8.Scheduler) for the SUITE8 Maintenance jobs. Click **Next** to continue.

Complexity requirements are:

- Not to contain the user's account name or parts of the user's full name that exceed two consecutive characters
- Minimum password length of 12 characters
- First character of password **MUST** be a character
- Password must contain at least 1 Lowercase character (a through z)
- Password must contain at least 1 Uppercase character (A through Z)
- Password must contain at least 1 digit (0 through 9)
- Password can contain special character: !*()_+{[]}@~#.,



13. If you want to use 'Encrypted Passwords' for the maintenance scripts – click **YES** to continue. The default is: **NO**.



14. The install shield performs the following tasks:

Creates the following directories on the MAINTENANCE drive (for example: **D:**):

\BACKUP
 \BACKUP.RMAN\SCRIPTS
 \BACKUP.RMAN\LOG
 \EXP\DAIY

Copies the maintenance scripts to the directory: **\BACKUP.RMAN\SCRIPTS**

Creates the Windows user account: Suite8.Scheduler and adds the Windows user: Suite8.Scheduler to the local group: **ADMINISTRATORS**.

Modifying the environment parameters for the Oracle Recovery Manager (RMAN)

Oracle RMAN Backup files are located in the directory: **\BACKUP**

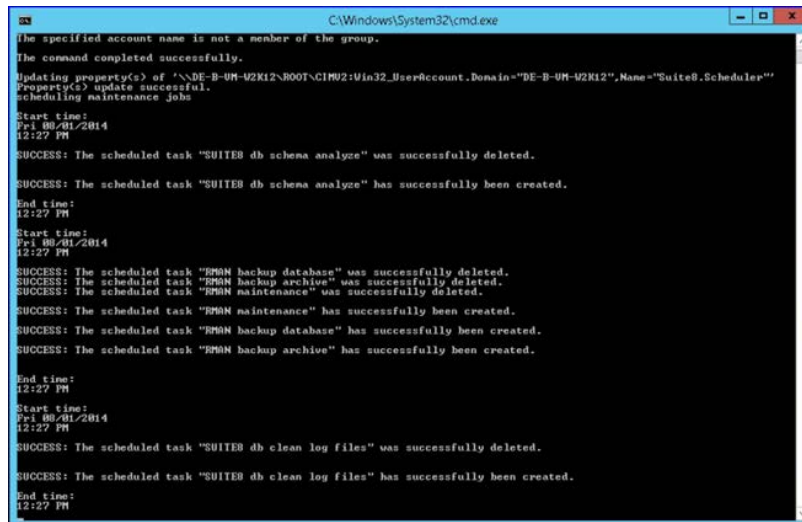
Maintenance scripts are located in the directory: **\BACKUP.RMAN\SCRIPTS**

Maintenance log files are located in the directory: **\BACKUP.RMAN\LOG**

Creating 5 scheduled jobs:

- SUITE8 db schema analyze
- Every day at 2:15 am the scheduled task is running the DBMS_STATS package to analyze all tables and indexes of the V8LIVE user.

- SUITE8 db clean log files
- Every day at 0:05 am the scheduled task is cleaning the Oracle Dump folders, creating a copy of the Database Alert file and creating a copy of the LISTENER Log file.
- RMAN backup database
- Every day at 11:00 pm the scheduled task is creating a complete backup of the Oracle Database via Oracle Recovery Manager (RMAN). After this the scheduled task is deleting all Oracle Database Backups – older than the latest successfully Oracle Database Backup.
- RMAN backup archive
- Every 3 hours the scheduled task is creating a backup of all Oracle Database Archives - via Oracle Recovery Manager (RMAN) - which are not backed up for 2 times. After this the scheduled task is deleting all Oracle Archive Backups – older than the latest successfully Oracle Database Backup.
- RMAN maintenance
- Every day at 09:15 pm the scheduled task is checking the Oracle Database/Archive Backups via Oracle Recovery Manager (RMAN). The Task is looking for obsolete and not existing Backups and deleting not required Oracle Archives



```

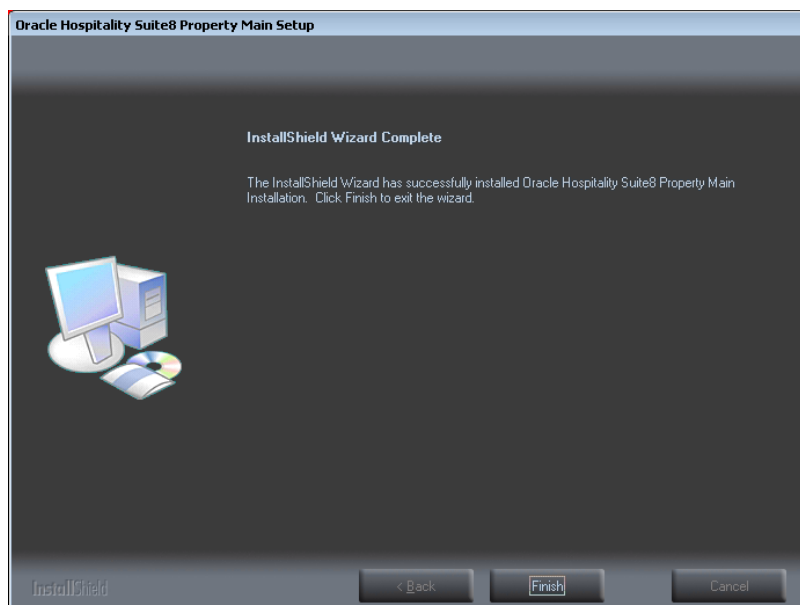
C:\Windows\System32\cmd.exe
The specified account name is not a member of the group.
The command completed successfully.
Updating property(s) of '\\DE-B-UM-U2K12\ROOT\CIMV2:Win32_UserAccount.Domain="DE-B-UM-U2K12",Name="Suite8.Scheduler"'
Property(s) update successful.
Scheduling maintenance jobs
Start time:
Fri 08/01/2014
12:27 PM
SUCCESS: The scheduled task "SUITE8 db schema analyze" was successfully deleted.
SUCCESS: The scheduled task "SUITE8 db schema analyze" has successfully been created.
End time:
12:27 PM
Start time:
Fri 08/01/2014
12:27 PM
SUCCESS: The scheduled task "RMAN backup database" was successfully deleted.
SUCCESS: The scheduled task "RMAN backup archive" was successfully deleted.
SUCCESS: The scheduled task "RMAN maintenance" was successfully deleted.
SUCCESS: The scheduled task "RMAN maintenance" has successfully been created.
SUCCESS: The scheduled task "RMAN backup database" has successfully been created.
SUCCESS: The scheduled task "RMAN backup archive" has successfully been created.
End time:
12:27 PM
Start time:
Fri 08/01/2014
12:27 PM
SUCCESS: The scheduled task "SUITE8 db clean log files" was successfully deleted.
SUCCESS: The scheduled task "SUITE8 db clean log files" has successfully been created.
End time:
12:27 PM

```

15. The following step will show an overview of the Oracle Maintenance installation. Please save the document. After closing the Text file, the file will be deleted! Close the file to continue.

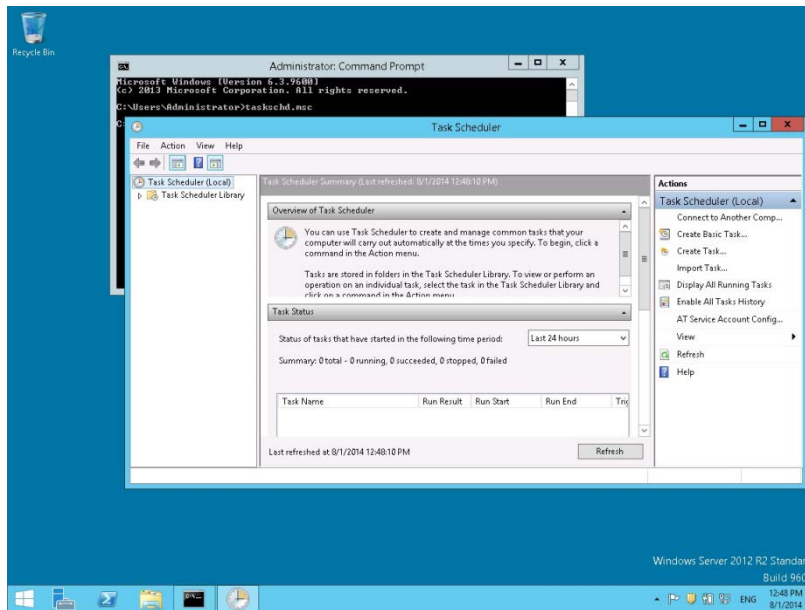


16. The Oracle Database Maintenance Jobs install shield prompts a finish message upon completion. Click **Finish** to continue.
17. Click **Finish** to exit the Install shield Wizard.



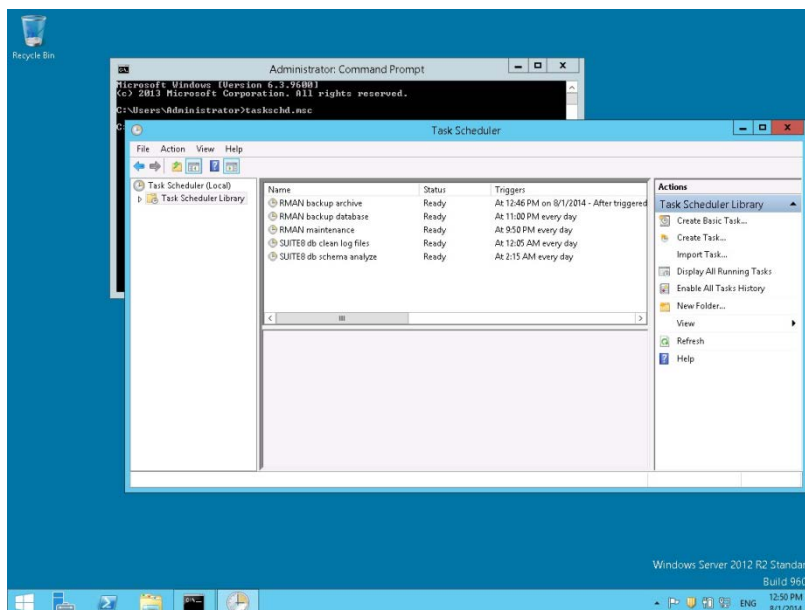
Verify Scheduled Tasks

1. Open a command prompt (with the option **Run as administrator**) and type **taskschd.msc** to launch the Task Scheduler utility.



2. Verify that the 5 listed Jobs are existent.

- SUITE8 db schema analyze
- SUITE8 db clean log files
- RMAN backup database
- RMAN backup archive
- RMAN maintenance



3. Close the Task Scheduler utility

6 Appendix (Tips&Tricks, Q&A, Issues...)

- **Message „MSVCR100.dll not found“ during start of Suite8:**

You may refer to the links below to download Microsoft Visual C++ Redistributable .

For 32-bit, refer to this link:

<http://www.microsoft.com/download/en/details.aspx?id=5555>

For 64-bit, refer to this link:

<http://www.microsoft.com/download/en/details.aspx?id=14632>

Download and run for the related OS 32 or 64-bit.

If you use Suite8 –Client with 64-bit OS, you also need to run the 32-bit one.