

Oracle® Hospitality Suite8

Installation Guide

Release 8.10.1.10

E81525-01

November 2016

Copyright © 2002, 2016, Oracle and/or its affiliates. All rights reserved.

This software and related documentation are provided under a license agreement containing restrictions on use and disclosure and are protected by intellectual property laws. Except as expressly permitted in your license agreement or allowed by law, you may not use, copy, reproduce, translate, broadcast, modify, license, transmit, distribute, exhibit, perform, publish, or display any part, in any form, or by any means. Reverse engineering, disassembly, or decompilation of this software, unless required by law for interoperability, is prohibited.

The information contained herein is subject to change without notice and is not warranted to be error-free. If you find any errors, please report them to us in writing.

If this software or related documentation is delivered to the U.S. Government or anyone licensing it on behalf of the U.S. Government, then the following notice is applicable:

U.S. GOVERNMENT END USERS: Oracle programs, including any operating system, integrated software, any programs installed on the hardware, and/or documentation, delivered to U.S. Government end users are "commercial computer software" pursuant to the applicable Federal Acquisition Regulation and agency-specific supplemental regulations. As such, use, duplication, disclosure, modification, and adaptation of the programs, including any operating system, integrated software, any programs installed on the hardware, and/or documentation, shall be subject to license terms and license restrictions applicable to the programs. No other rights are granted to the U.S. Government.

This software or hardware is developed for general use in a variety of information management applications. It is not developed or intended for use in any inherently dangerous applications, including applications that may create a risk of personal injury. If you use this software or hardware in dangerous applications, then you shall be responsible to take all appropriate fail-safe, backup, redundancy, and other measures to ensure its safe use. Oracle Corporation and its affiliates disclaim any liability for any damages caused by use of this software or hardware in dangerous applications.

Oracle and Java are registered trademarks of Oracle and/or its affiliates. Other names may be trademarks of their respective owners.

Intel and Intel Xeon are trademarks or registered trademarks of Intel Corporation. All SPARC trademarks are used under license and are trademarks or registered trademarks of SPARC International, Inc. AMD, Opteron, the AMD logo, and the AMD Opteron logo are trademarks or registered trademarks of Advanced Micro Devices. UNIX is a registered trademark of The Open Group.

This software or hardware and documentation may provide access to or information about content, products, and services from third parties. Oracle Corporation and its affiliates are not responsible for and expressly disclaim all warranties of any kind with respect to third-party content, products, and services unless otherwise set forth in an applicable agreement between you and Oracle. Oracle Corporation and its affiliates will not be responsible for any loss, costs, or damages incurred due to your access to or use of third-party content, products, or services, except as set forth in an applicable agreement between you and Oracle.

Contents

Preface	4
Audience	4
Important Information	4
Customer Support.....	4
Documentation.....	4
Revision History.....	4
1 Getting Started.....	5
Before You Start.....	5
Understanding the Installation Process	5
2 Pre-Installation Tasks.....	6
3 Using the Upgrade Tool	7
Upgrading Suite8 Release 8.10.1 and higher	7
Updating the Suite8 Database	10
Upgrading the Suite8 Application.....	11
Installing the SQL Scripts.....	12
4 Manually Upgrading	16
Upgrading from a Previous Release.....	16
5 Installing the Suite8 ini file	18
6 Activating Oracle Wallet	19
7 Post Upgrade Tasks	20
8 Exporting and Importing a Suite8 User	22
What Is Data Pump Export?	22
Activating the Data Pump	22
Exporting using the Data Pump EXPDP.exe.....	23
Import using the Data Pump IMPDP.exe	24
9 Appendix: Issues and Solutions.....	26
Issue: Error Message Cannot decrypt password	26
Issue: Button for D/B-Update or Program Update is grayed out.	27
Issue: The select connection screen is empty	28

Preface

This guide provides instructions on how to upgrade and configure Oracle Hospitality Suite8 release 8.10.1

You can download the Suite8 8.10.1.10 release at the following URL:
<https://support.oracle.com>

Audience

This guide is intended for installers, programmers, technical support teams, product specialists, and others who install the Oracle Hospitality Suite8 release 8.10.1.

Important Information

You must enter a note category for Financial Accounts in Suite8 configuration before running the update. For more information see [Pre-Installation Tasks](#) section.

Customer Support

To contact Oracle Customer Support, access My Oracle Support at the following URL:
<https://support.oracle.com>

When contacting Customer Support, please provide the following:

- Product version and program/module name
- Functional and technical description of the problem (include business impact)
- Detailed step-by-step instructions to re-create
- Exact error message received
- Screen shots of each step you take

Documentation

Oracle Hospitality product documentation is available on the Oracle Help Center at:
<http://docs.oracle.com/en/industries/hospitality>

Revision History

Date	Description of Change
November 2016	Initial publication

1 Getting Started

Before You Start

Installing Suite8 requires:

- PCs and a working knowledge of the Microsoft Windows Interface
- Microsoft Windows Administrative privileges
- Root privileges if installing on an Oracle Linux environment
- Client Application Loader (CAL) technology

Understanding the Installation Process

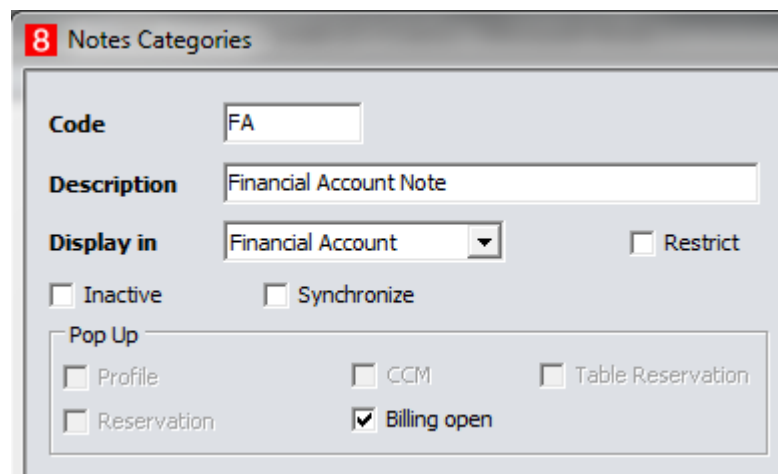
The installation process includes the following steps:

1. You must complete the [Pre-Installation Tasks](#) prior to upgrading to Suite8 release.
2. To upgrade Suite8 you can run the Suite8 [Upgrade Tool](#) or complete a [manual upgrade](#).

2 Pre-Installation Tasks

Before you upgrade Suite8 you must:

- Confirm the database complies with release 8.10.0. or 8.10.1.0
- Export the V8LIVE user, the [Export & Import Suite8 User section](#) contains more information.
- If upgrading from Suite8 8.10.0, enter a note category for Financial Account notes:
 1. Go to the **Setup** and select the **Configuration** option.
 2. From the **Note Categories** menu, enter a new category with the category.
 3. Select **Financial Account** from the **Display in** drop-down list.



8 Notes Categories

Code FA

Description Financial Account Note

Display in Financial Account ☐ Restrict

☐ Inactive ☐ Synchronize

Pop Up

☐ Profile ☐ CCM ☐ Table Reservation

☐ Reservation ☒ Billing open

You must configure this option before updating Suite8, during the update a script updates the corresponding records in XCNO. The *Oracle Hospitality Suite8 Release Notes for Release 8.10.1.0*, contains more information, review the items marked with TT 6874 and TT 18678 for more details.

3 Using the Upgrade Tool

The Suite8 Upgrade Tool is now included with each release starting with the Suite8 release 8.10.1 and higher. You can use the Upgrade Tool for upgrades from release 8.10 and higher.

Follow the steps below to complete the upgrade process or you can use the InstallShield Wizard to complete specific steps to update the Suite8 application.

Using the InstallShield Wizard you can:

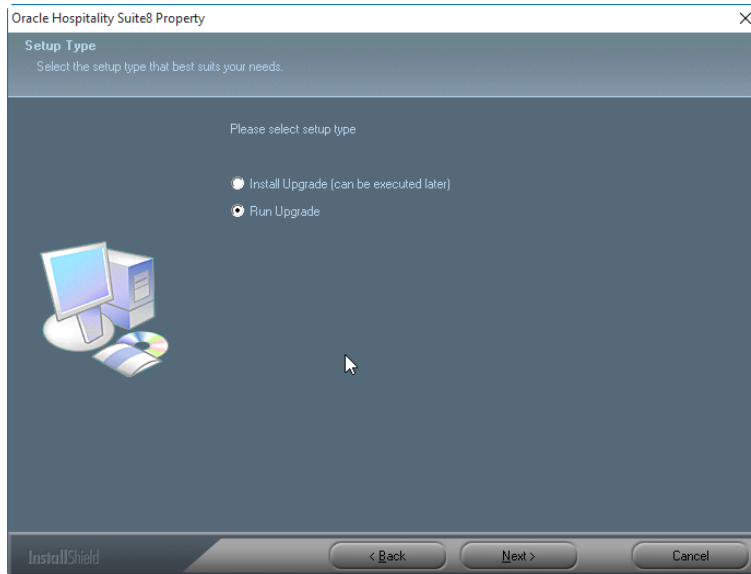
- Upgrade to 8.10.1 and higher.
- Upgrade the Suite8 database on the server and the client applications.
- Create shortcuts for the Suite8 Installer.
- Run certain SQL statements for system maintenance.

Use version control (VerCtrl) to distribute programs and HTML files to other clients.

Upgrading Suite8 Release 8.10.1 and higher

Follow these steps to upgrade from release 8.10 to 8.10.1 and higher.

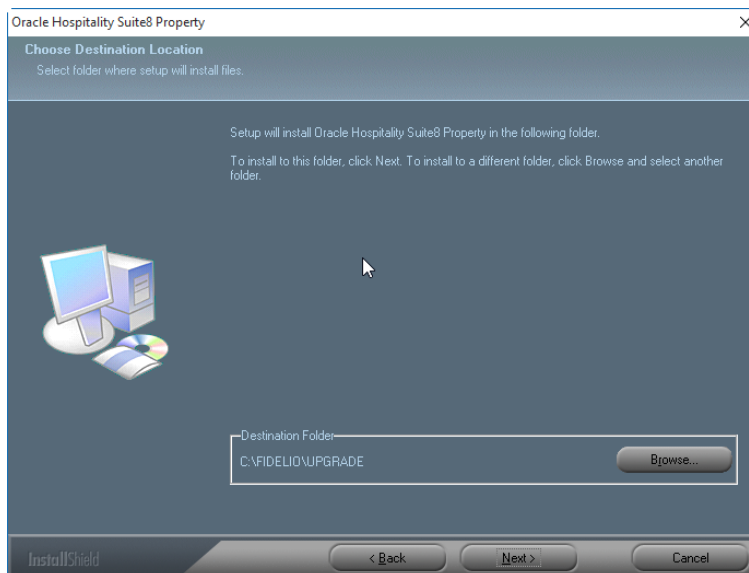
1. Log in and download the Suite8 version from the following URL:
<https://support.oracle.com/>
2. Right-click the `Suite8InstUpgrade.exe` file and select run as administrator.
3. On the InstallShield, select **Next** to begin the upgrade process.
4. Read the Important Notes and select **Next**.
5. Select one of the following options, and then select **Next**.
 - Select **Run Upgrade** to start the upgrade process.
 - Select the **Install Upgrade** to install the application. A shortcut appears on your desktop to start the InstallShield Wizard from the desktop at a later time.



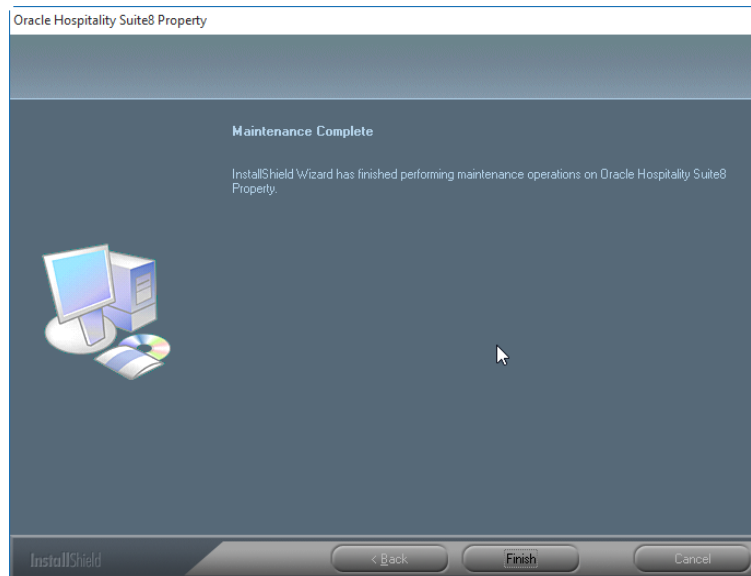
Select **Next** and **Browse** to select the folder to install the program files. During the installation process, the InstallShield Wizard checks if the target folder is empty. If the folder does not exist, the InstallShield Wizard creates the folder and then copies the files to the folder.

For example, the default folder for these upgrade files:

C:\FIDELIO\UPGRADE



6. If you select the **Install Upgrade (can be executed later)** option to install the Suite8 application but do not want to start the installation process, click **Finish** to close the window. The upgrade program installs a shortcut on the desktop. When you decide to start the update later, double-click on this shortcut and follow the instructions below.

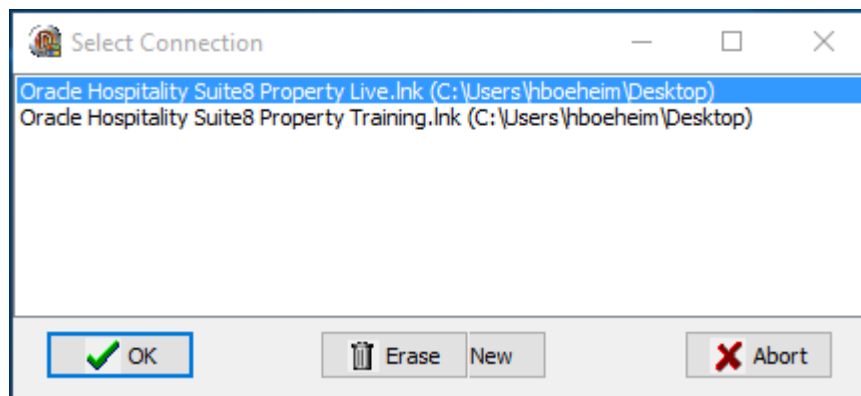


If you select **Run Upgrade**, follow the next steps.

7. Select a connection and click **OK**.

The connections that appear are the shortcuts to start Suite8. You must select the correct connection, for example **Oracle Hospitality Suite8 Property Live.Ink** for the live production system and select **OK**. If there is just one connection, the screen below does not appear and the next screen appears.

If no connection appears, you may need to create a new shortcut. The [Appendix](#) section below contains more information.

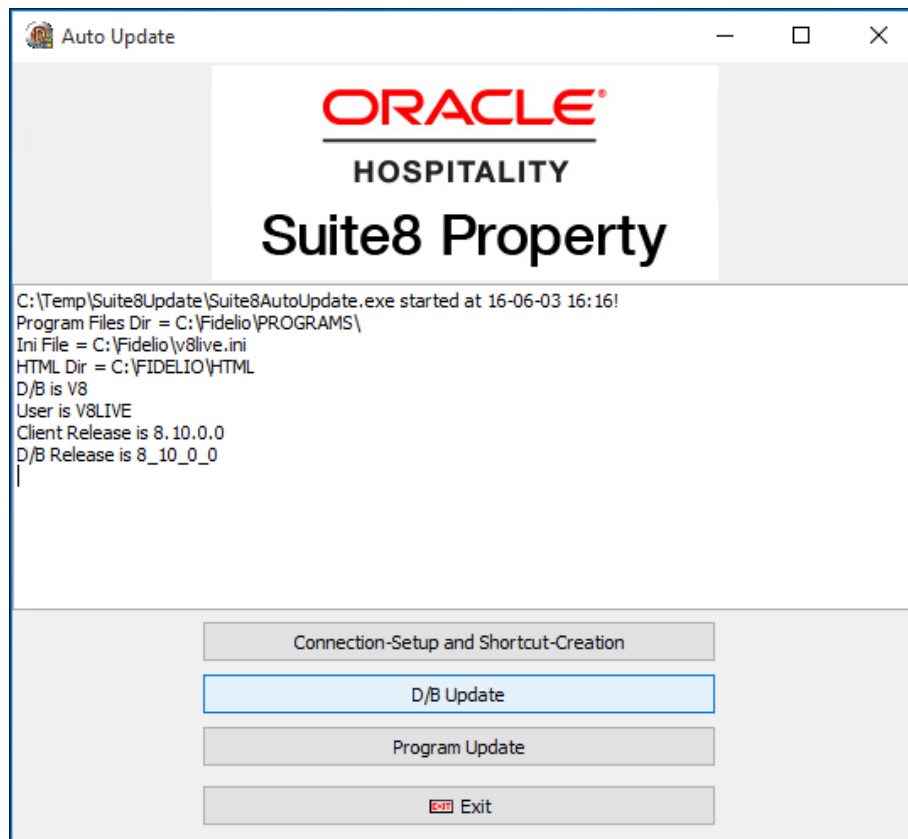


Updating the Suite8 Database

You can use the database upgrade option to upgrade the database during the Suite8 application upgrade or you can upgrade the database at any time using the InstallShield Wizard and selecting the **D/B Update** option.

To update the database:

1. Go to the database server and log in as system administrator.
2. Run the InstallShield Wizard and select the **D/B Update** option



3. The progress is shown in the main window. Log files are created for reference in the same directory with the following naming convention:
`8_10_0_0_to_8_10_1_0.sql.log`

```

D/B Release is 8_10_0_0
D/B Update started!
Executed: delete from wuss where wuss_xcms_id=0 AND wuss_name='DBVersionCheckDisable', rows
affected: 1
Executed: insert into wuss (wuss_id,wuss_xcms_id,wuss_name,wuss_value) values (seq_wuss.nextval,
0,'DBVersionCheckDisable','1'), rows affected: 1
Script file: C:\Temp\Suite8Update\UpdateScripts\8_10_0_0_to_8_10_1_0.sql
Log file: C:\Temp\Suite8Update\UpdateScripts\8_10_0_0_to_8_10_1_0.sql.log
Script path: C:\Temp\Suite8Update\UpdateScripts\
sqlplus.exe -I V8LIVE/***@V8 @C:\Temp\Suite8Update\UpdateScripts\681C.tmp >C:\Users\hboenheim
\AppData\Local\Temp\yc681D.tmp
Sqlplus finished
Log file name: C:\Temp\Suite8Update\UpdateScripts\8_10_0_0_to_8_10_1_0.sql.log

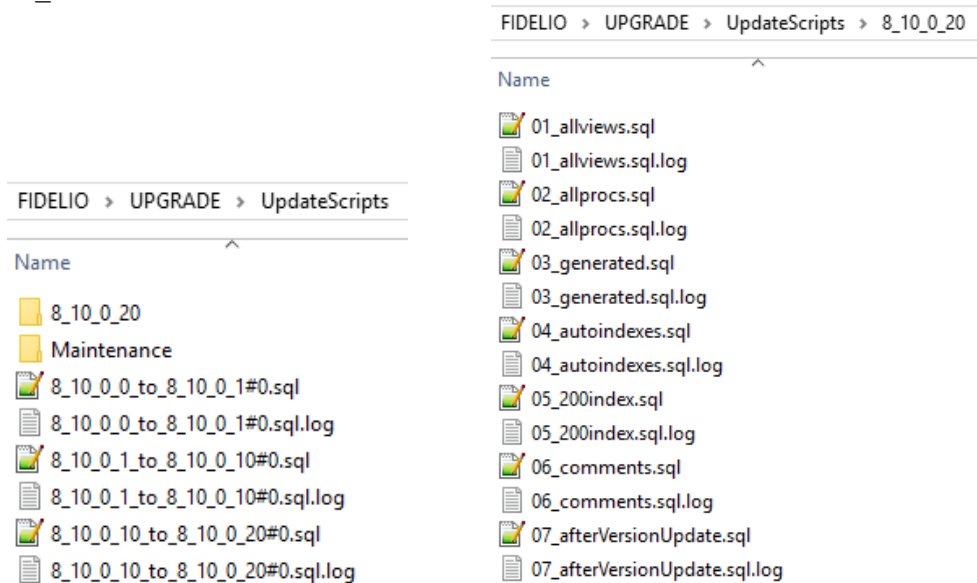
```

In addition to the scripts in the `UpgradeScripts` folder, any scripts located in a subfolder named with the target version are executed, for example, `8_10_0_20`. For each file executed a log file is created in the same directory. The naming convention is similar to the update log files. For example:

```

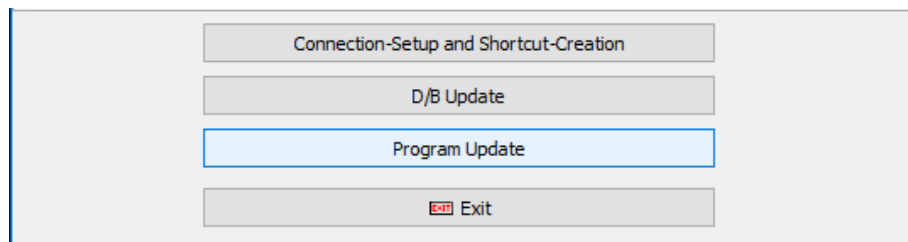
01_allviews.sql
01_allviews.sql.log

```



Upgrading the Suite8 Application

1. Select **Program Update** to start updating the Suite8 application.

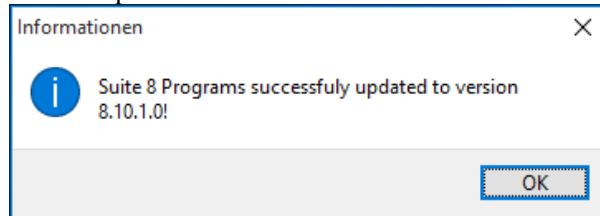


The progress appears in the main window. The program files and HTML files are

copied to the dedicated folders.

2. After the update completes, select **OK** to confirm the successful update.

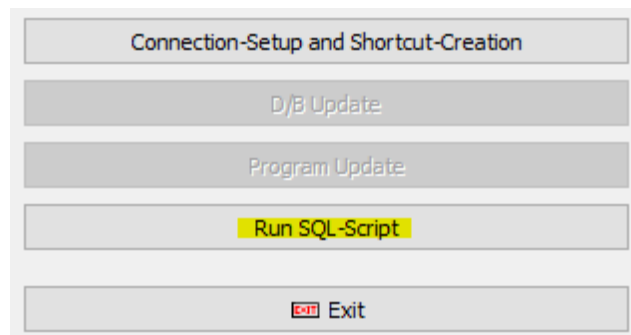
For example:



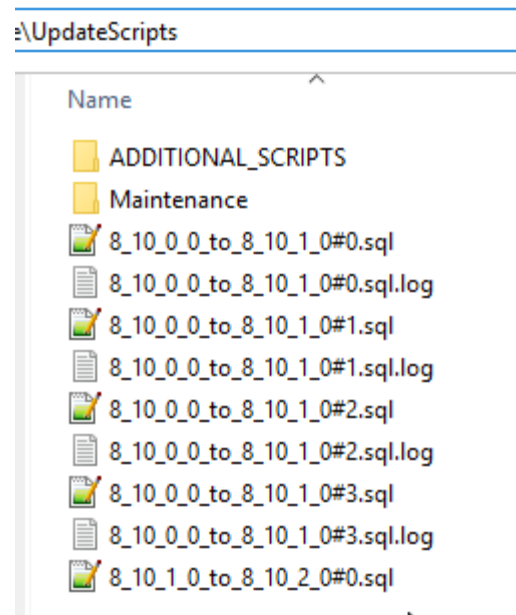
Installing the SQL Scripts

You should only select the **Run SQL-Script** option with the advice of an Oracle support representative. For example, you may execute a script for a patch update for a specific customer or you may need to install a country legal requirement using a script. You may need to run a script for system maintenance or to install a specific chain requirement.

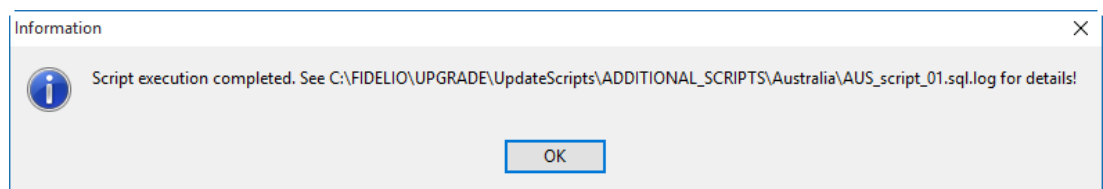
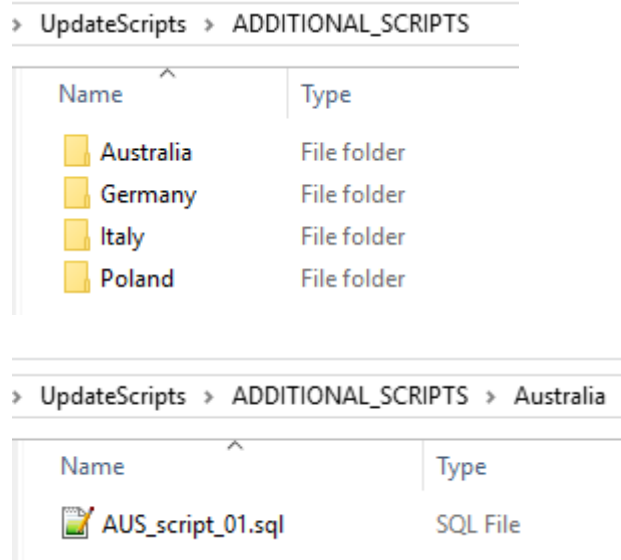
1. To run a script, select the **Run SQL Script** option.



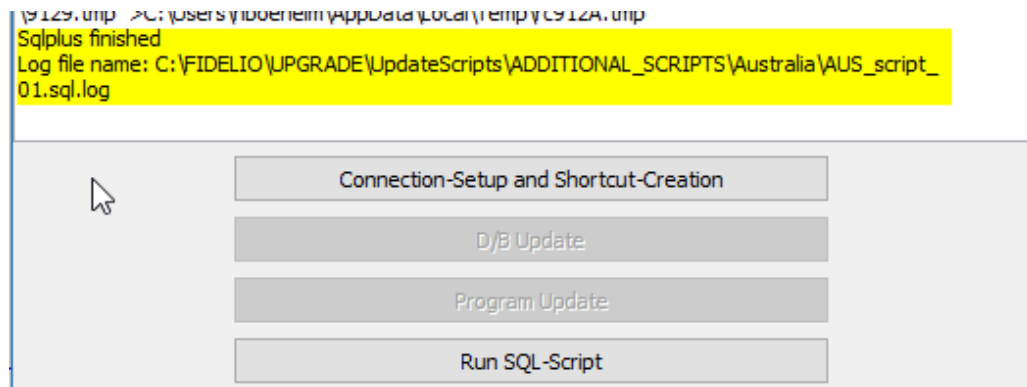
2. The Microsoft Windows Explorer window opens and contains the default scripts.



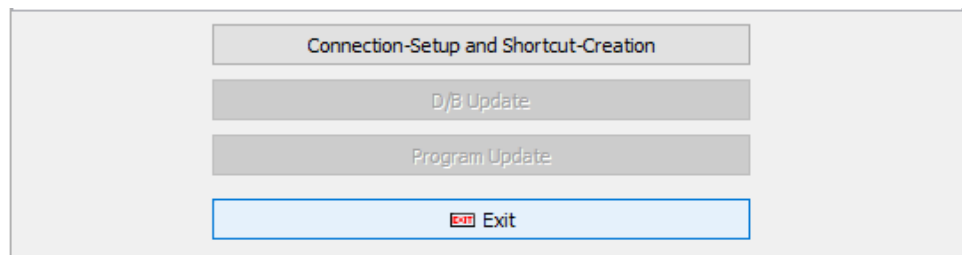
3. To install country specific scripts, go to the folder that contains the additional scripts and double-click the script.



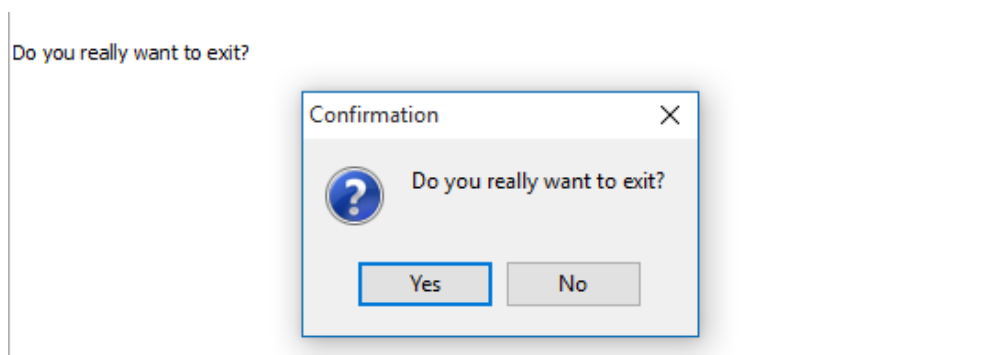
After the scripts install, the status appears in the window and a log file is created in the same folder as the script.



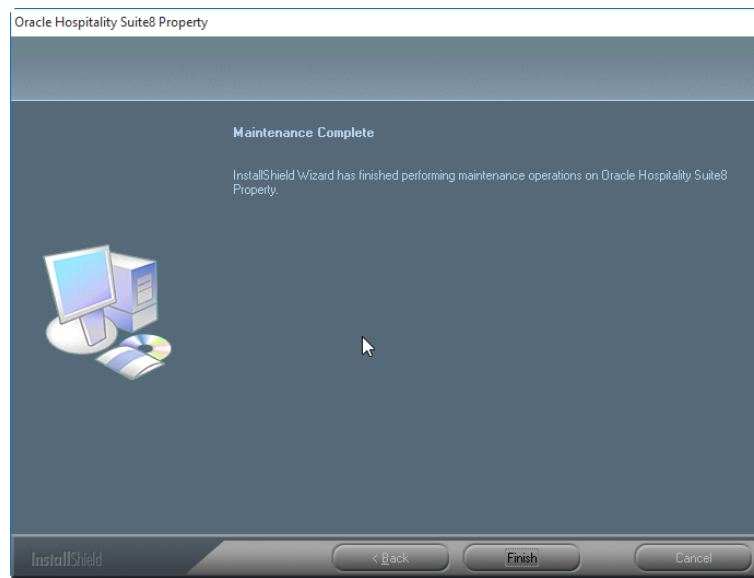
4. Click **Exit**.



5. Click **Yes** to exit.



6. If you have started the upgrade from the InstallShield Wizard, click **Finish** to close the window.



4 Manually Upgrading

Upgrading Suite8 from a Previous Release

1. Confirm your Suite8 application and database servers meet the requirements listed in the [Pre-Installation Tasks](#) section.
2. Log in and download the Suite8 release from the following URL:
<https://support.oracle.com/>
3. Unzip and copy the content of the files as follows:
 - The `programs.zip` file contains the program files and typically located in: `\fidelio\programs`
 - The `rtf.zip` file contains HTML files and typically located in: `\fidelio\html`
 - VersionControl is typically located on the File Server `\VersionCtrl`
 - The `Updatescripts.zip` and `scripts.zip` files can be copied to any definable destination.

4. Open Oracle SQL Developer and connect to the V8live user. Run the extracted scripts from the `updatescripts.zip` file.

If you are upgrading from 8.10.1.0, run this script:

```
8_10_1_0_to_8_10_1_10#0.sql
```

If you are upgrading from 8.10.0, run the scripts depending on your installed version:

```
8_10_0_0_to_8_10_1_0#0.sql
```

```
8_10_0_0_to_8_10_1_0#1.sql
```

```
8_10_0_0_to_8_10_1_0#2.sql
```

```
8_10_0_10_to_8_10_1_0#0.sql
```

```
8_10_0_10_to_8_10_1_0#1.sql
```

```
8_10_0_10_to_8_10_1_0#2.sql
```

```
8_10_0_20_to_8_10_1_0#0.sql
```

```
8_10_0_20_to_8_10_1_0#1.sql
```

```
8_10_0_20_to_8_10_1_0#2.sql
```

5. After the database structure updates, run the following scripts:
 - `01_allviews.sql`
 - `02_allprocs.sql`
 - `03_generated.sql`
 - `04_autoindexes.sql`
 - `05_200index.sql`
 - `06_comments.sql`
 - `07_afterVersionUpdate.sql`
 - `08_gatherstatisticsforall.sql`

-
6. Use the latest `register.bat` file for new installations and the `minregister.bat` file for updates. The release includes both files, new executables, and libraries.
 7. If you use Version Control, update the existing `VerCtrl.ini` with new libraries, HTML files, and the help files or use the latest `VerCtrl.ini` file included in this release.

The existing `verctrlv8.exe` file must be replaced with the latest `verctrlv8.exe` file included in this release. This new version is required to register the new `Ifc8ComEx.dll` file after you copy the file to other workstations.
 8. To be compliant with Oracle policies, the user password encryption in Suite8 uses the Oracle approved crypto algorithm. This requires converting all existing passwords to the new hashing scheme, which occurs automatically when you start Suite8 release 8.9.6.0 or higher for the first time. You must backup the XCED table prior to upgrading to the 8.10 release or higher in case a downgrade is required later.
 3. The Suite8 release 8.10 and higher requires an `ini` file for startup and you must modify all Suite8 shortcuts. Suite8 will not start without the `*.ini` file. The section [Installing the Suite8 ini file](#) contains more information.
 4. To fulfill the PA-DSS Certification Security Guidelines for 3.1 the protected data `XCCS->XCCS_NUMBER` and `WPRT ->WPRT_VALUE` will be encrypted with Oracle Wallet. If the Oracle Wallet is not active or the fields are not encrypted, Suite 8 does not start and an error message appears. For example, activate the Oracle Wallet. The section [Activating Oracle Wallet](#) contains more information.

5 Installing the Suite8 ini file

The Suite8 release 8.10 and higher requires an `ini` file for startup and you must modify all the Suite8 shortcuts. Suite8 will not start without the `*.ini` file.

- The release includes the sample file `v8live.ini`. You can find the media package in the folder `Suite8INI`.
- The `*.ini` file contains all the database connection details including the HTML path and a parameters section that contains the required runtime parameters you can add.

To enable all keys expecting a boolean value you can set the value to `true`, `1`, or `ON`. To disable a key you can set the value to either `false`, `0`, or `OFF`.

- You must name the `*.ini` file the same as the connected schema user. For example, `V8live`. This simplifies creating shortcuts for different users using the same program files. For example, this simplifies a CRS environment and enables the support to maintain a generic structure.
- The `*.ini` file must be added in the shortcut. For example, the shortcut properties:

```
C:\Fidelio\programs\fideliov8.exe C:\Fidelio\v8live.ini
```

- If the installation uses the automatic night audit, you can use the command line. To access the command line go to the **Setup** menu, select **Configuration, Global Settings**, and then select **Night Audit** to configure the new startup parameters.
- Using the DPAPI requires encryption key management per user or workstation. The Oracle user password contained in the `ini` file must be encrypted by running the `FidelioV8DBPasswordEncrypt.exe` file included in the 8.10 release. This encryption file must run on each workstation. You cannot run the encryption process once and then use the same the `ini` file everywhere.

Installing the ini File and Updating Shortcuts

You must complete the following steps to install the `ini` file and create a shortcut.

1. Run the `V8-Client-Short-Cut.exe` file and click **Next**.
2. Review the information and click **Next**.
3. Select the setup type and click **Next**.
4. Verify the destination folder and click **Next**.
5. Verify the program icons folder and click **Next**.
6. Enter the Suite8 live user, password, and service. You must enter a password with 8 characters, and click **Next**.
7. Select **Yes** to change the password or select **No** to continue without changing the password.
8. Enter the Suite8 training user, password, and service.
9. Click **Next** and **Finish**.

6 Activating Oracle Wallet

You must complete the following steps to activate the Oracle Wallet.

1. Create a folder for the wallet in the Oracle base directory. For example,
C:\ORACLE\ADMIN\V8\WALLET
2. Add the entry below to SQLNET.ORA. For example, find the 11g
SQLNET.ORA file in this location:
C:\oracle\11.2.0\DATABASE\network\admin
->DIRECTORY
You must change the path to the WALLET folder created in the previous
step.
ENCRYPTION_WALLET_LOCATION = (SOURCE =
 (METHOD = FILE)
 (METHOD_DATA =
 (DIRECTORY =
 C:\ORACLE\ADMIN\V8\WALLET)))
3. Restart the database.
4. Connect as sys and execute the following statement to set the encryption
key. Replace PLACE_YOUR_PASSWORD_HERE with the encryption key and
keep this key in a safe place.
ALTER SYSTEM SET ENCRYPTION KEY IDENTIFIED by
"PLACE_YOUR_PASSWORD_HERE";
5. To open Oracle Wallet and activate global encryption:
ALTER SYSTEM SET ENCRYPTION WALLET OPEN IDENTIFIED BY
"PLACE_YOUR_PASSWORD_HERE";
6. Connect to live schema. For example, V8LIVE and execute the statements
below.
ALTER TABLE wprt MODIFY (wprt_value ENCRYPT USING
 'AES256' SALT);
ALTER TABLE xccs MODIFY (xccs_number ENCRYPT USING
 'AES256' SALT);
7. Each restart of the database requires opening the wallet again.
ALTER SYSTEM SET WALLET OPEN IDENTIFIED by
"PLACE_YOUR_PASSWORD_HERE";
8. Useful Tips:
 - To check the status connect as sys: SELECT * FROM
V\$ENCRYPTION_WALLET;
 - To close the wallet for testing purposes: ALTER SYSTEM SET
ENCRYPTION WALLET CLOSE IDENTIFIED by
"PLACE_YOUR_PASSWORD_HERE";

The Oracle Wallet functionality that complies with PA-DSS
3.1 is not supported with Oracle 10g. The [Post-Upgrade Tasks](#)
section contains more information.

7 Post Upgrade Tasks

After upgrading Suite8 you must:

1. Run the sequence fix Suite8 > Setup > Miscellaneous > System Maintenance > Database > Sequence Fix
2. To execute the primary key existence check the key existence to confirm no primary keys are missing except for WLNR, WNEB, and STAB.
Go to Suite8 > Setup > Miscellaneous > System Maintenance > Miscellaneous > System Check > Database > Primary
3. Update the mailing by going to Suite8 > Setup > Miscellaneous > Updates > Mailing Update > import mailing.sql included in this release.
4. To update the translation import the translation file provided by the local office.
Go to Suite8 -> Setup -> Miscellaneous -> Updates -> Translation Update
5. If you are updating an existing Online Interface installation, you must first uninstall and then reinstall the interface by using the new Online Interface InstallShield Wizard included in this release.
6. The tray icon of the Fidelio Server is not visible when running as a service on a Microsoft Windows 2008 server. This is due to changes in the operating system, you can read about the workaround in the following location:
Help File->How To->Fidelio Server->Fidelio Server->Installing Fidelio Server as a Microsoft Windows Service on a Microsoft Windows 2008 Server.
7. To configure and manage FTP accounts in Suite8, review the FTP connection settings in applicable functions including the Scheduled Task File Upload to implement the new features added from release 8.9.6.0 and higher. This is similar to common FTP clients.
8. Review the readme.html and the *Oracle Hospitality Suite8 Release Notes* for new features and updates.
9. Verify the version of Oracle installed is one of the following:
 - Oracle 11g release 2 11.2.0.3 or 11.2.0.4 with latest Oracle Patch for the database installation (64bit) and client installation (32bit) **or**
 - Oracle 12c release 1 12.1.0.1 or 12.1.0.2 with latest Oracle Patch for the database installation (64bit) and client installation (32bit).
 - You must install Oracle 11g release 2 with the parameter setting compatible=10.2.0.4. Refer to the *Oracle Hospitality Suite8 Install Shield Guide for Release 8.10.0.0* for more information.

10. When installing the 8.10 release of webConnect, if the following error appears you can follow the instructions below to resolve the error.

Server Error in '/V8Client' Application.

[A]System.Web.WebPages.Razor.Configuration.HostSection cannot be cast to [B]System.Web.WebPages.Razor.Configuration.HostSection. Type A originates from 'System.Web.WebPages.Razor, Version=1.0.0.0, Culture=neutral, PublicKeyToken=31bf3856ad364e35' in the context 'Default' at location 'C:\windows\Microsoft.Net\assembly\GAC_MSIL\System.Web.WebPages.Razor\v4.0.1.0.0_31bf3856ad364e35\System.Web.WebPages.Razor.dll'. Type B originates from 'System.Web.WebPages.Razor, Version=2.0.0.0, Culture=neutral, PublicKeyToken=31bf3856ad364e35' in the context 'Default' at location 'C:\Windows\Microsoft.NET\Framework\v4.0.30319\Temporary ASP.NET Files\v8Client\4147f401\9a8a753d\assembly\dl3\c20ddb03\006c5909_7b7cce01\System.Web.WebPages.Razor.dll'.

Description: An unhandled exception occurred during the execution of the current web request. Please review the stack trace for more information about the error and where it originated in the code.



Example Details: System.InvalidCastException: [A]System.Web.WebPages.Razor.Configuration.HostSection cannot be cast to [B]System.Web.WebPages.Razor.Configuration.HostSection. Type A originates from 'System.Web.WebPages.Razor, Version=1.0.0.0, Culture=neutral, PublicKeyToken=31bf3856ad364e35' in the context 'Default' at location 'C:\windows\Microsoft.Net\assembly\GAC_MSIL\System.Web.WebPages.Razor\v4.0.1.0.0_31bf3856ad364e35\System.Web.WebPages.Razor.dll'. Type B originates from 'System.Web.WebPages.Razor, Version=2.0.0.0, Culture=neutral, PublicKeyToken=31bf3856ad364e35' in the context 'Default' at location 'C:\Windows\Microsoft.NET\Framework\v4.0.30319\Temporary ASP.NET Files\v8Client\4147f401\9a8a753d\assembly\dl3\c20ddb03\006c5909_7b7cce01\System.Web.WebPages.Razor.dll'.

Source Error:

An unhandled exception was generated during the execution of the current web request. Information regarding the origin and location of the exception can be identified using the exception stack trace below.

Stack Trace:

To resolve this error, go to the bin folder and delete the two files below. For example, C:\inetpub\wwwroot\V8Client\bin

 System.Web.Razor.dll	09.07.2013 10:05	Application extension	261 KB
 System.Web.WebPages.Razor.dll	09.07.2013 10:05	Application extension	39 KB

8 Exporting and Importing a Suite8 User

What Is Data Pump Export?

Data Pump Export is invoked with the `expdp` command which is a new utility included in the Oracle Database 10g. Although the functionality and parameters are similar to those of the original Export utility `exp`. These are separate utilities and their files are not compatible.

Data Pump Export is a utility for unloading data and metadata into a set of operating system files called a dump file set. The dump file set can be imported only by the Data Pump Import utility. You can import the dump file set on the same system or you can move the files to another system and load the dump file set.

The dump file set contains one or more disk files that contain table data, database object metadata, and control information. The files are written in a proprietary binary format. During an import operation, the Data Pump Import utility uses these files to locate each database object in the dump file set.

Because the dump files are created by the server and not by the client, the database administrator (DBA) must create directory objects.

Data Pump Export enables you to specify that a job should move a subset of the data and metadata, as determined in the export mode by using data filters and metadata filters specified in the Export parameters.

The following URL contains more information in the *Filtering During Export Operations* section: https://docs.oracle.com/cd/B19306_01/server.102/b14215/dp_export.htm

Activating the Data Pump

1. Create a folder on the database server for the data pump.
For example, `D:\EXP\DAI\LY`
2. Create a directory with the database and grant access to the directory. Connect as `sys` and execute the following statements:

```
CONNECT sys/password@ALIAS as sysdba
CREATE OR REPLACE DIRECTORY dpump_dir AS 'd:\FOLDER';
```

Replace `FOLDER` with the name of the directory you created in the previous step.

```
GRANT READ, WRITE ON DIRECTORY dpump_dir TO public;
```

To check which directory exists in the database use the following command.

```
SELECT * FROM dba_directories;
```

Exporting using the Data Pump EXPDP.exe

The export process on the server and can start from every connected workstation. The files export to the directory defined as `dpump_dir` in the example below.

Use the following command to execute the Data Pump export and refer to the listed explanations below for each parameter.

```
EXPDP USER/PASSWORD@ALIAS DIRECTORY=dpump_dir DUMPFILE=DUMPFILENAME.dmp  
PARALLEL=1 LOGFILE=LOGFILENAME.log  
ENCRYPTION_PASSWORD=ThePassWordForEncrytion ENCRYPTION_MODE=password  
VERSION=11.0.2.3
```

Field	Explanation
EXPDP	Executable
USER/PASSWORD@ALIAS:	Oracle user connect information, for example V8LIVE/live@V8
DIRECTORY=dpump_dir:	The Oracle <code>dpump_dir</code> directory contains the export. The Oracle database settings contain the path to the directory.
DUMPFILE=DUMPFILENAME.dmp	DUMPFILENAME.dmp defines the name of the dump file.
PARALLEL=1	Defines how many processes are used during the export. Increasing the number of processes creates a faster export. This affects the performance of Suite8. You must use more than one process only when no one is using the Suite8 application.
ENCRYPTION_PASSWORD =ThePassWordForEncrytion:	You can set the <code>ThePassWordForEncrytion</code> value. You must use the same value during the import process.
ENCRYPTION_MODE=password	Do not change this value.

Field	Explanation
VERSION=11.2.0.3	<p>Use this parameter to enhance the backwards compatibility of the database versions during the import and export process by defining the compatibility of the export database version. This parameter is optional.</p> <p>For example, if the Oracle database version is 12.1.0.2 and the parameter is not set the parameter automatically sets to VERSION=12.1.0.2 and an import is only possible with an Oracle database version of 12.1.0.2. In this example, the export is not possible to import into the Oracle database version 11.2.0.3.</p> <p>For example, if the database version is 11.2.0.3 and the parameter is defined, then you can export from an Oracle database version 12.1.0.2 and the export can be imported into an Oracle database version 11.2.0.3 or higher by defining the same parameter during the import process.</p>

Import using the Data Pump IMPDP.exe

In the example below, the file to import must be in the directory defined as the dpump_dir directory.

Use the following command to execute the Data Pump import and refer to the explanations listed below for each parameter.

```
IMPDP USER/PASSWORD@ALIAS DIRECTORY=dpump_dir DUMPFILE=DUMPFILENAME.dmp
PARALLEL=1 LOGFILE=LOGFILENAME.log
ENCRYPTION_PASSWORD=ThePassWordForEncrytion ENCRYPTION_MODE=password
VERSION=11.0.2.3 REMAP_SCHEMA=OWNER:TARGET
```

Field	Explanation
IMPDP	Executable
USER/PASSWORD@ALIAS	The Oracle user account information. For example: V8LIVE/live@V8
DIRECTORY=dpump_dir	dpump_dir is the name of the Oracle directory where the export is located and in the Oracle database settings the path to the folder is defined.

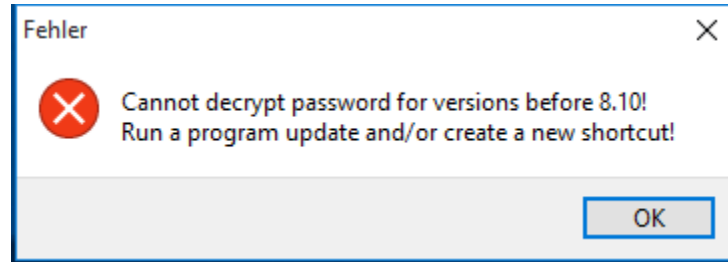
Field	Explanation
DUMPFIL= DUMPFILNAME . dmp	DUMPFILNAME . dmp defines the name of the dump file.
PARALLEL=1	Defines how many processes are used during the export. Increasing the number of processes creates a faster export. This affects the performance of Suite8. You must use more than one process only when no one is using the Suite8 application.
ENCRYPTION_PASSWORD =ThePassWordForEncrytion	The ThePassWordForEncrytion must be the same as defined in the export.
ENCRYPTION_MODE=password	Do not change.
VERSION=11.2.0.3	<p>Defines the backwards compatibility of the export. The Oracle database version must be equal or higher and requires the same version that was defined during the export process.</p> <p>For example, if the Oracle database version is 12.1.0.2 and the parameter is not set the parameter automatically sets to VERSION=12.1.0.2 and an import is only possible with an Oracle database version of 12.1.0.2. In this example, the export is not possible to import into the Oracle database version 11.2.0.3.</p> <p>For example, if the database version is 11.2.0.3 and the parameter is defined, then you can export from an Oracle database version 12.1.0.2 and the export can be imported into an Oracle database version 11.2.0.3 or higher by defining the same parameter during the import process.</p>
REMAP_SCHEMA=OWNER:TARGET	<p>OWNER: Defines the source schema of the export.</p> <p>TARGET: Defines the target schema for the import.</p>

9 Appendix: Issues and Solutions

The following list contains possible issues and solutions for the [Upgrade Tool](#).

Issue: Error Message Cannot decrypt password

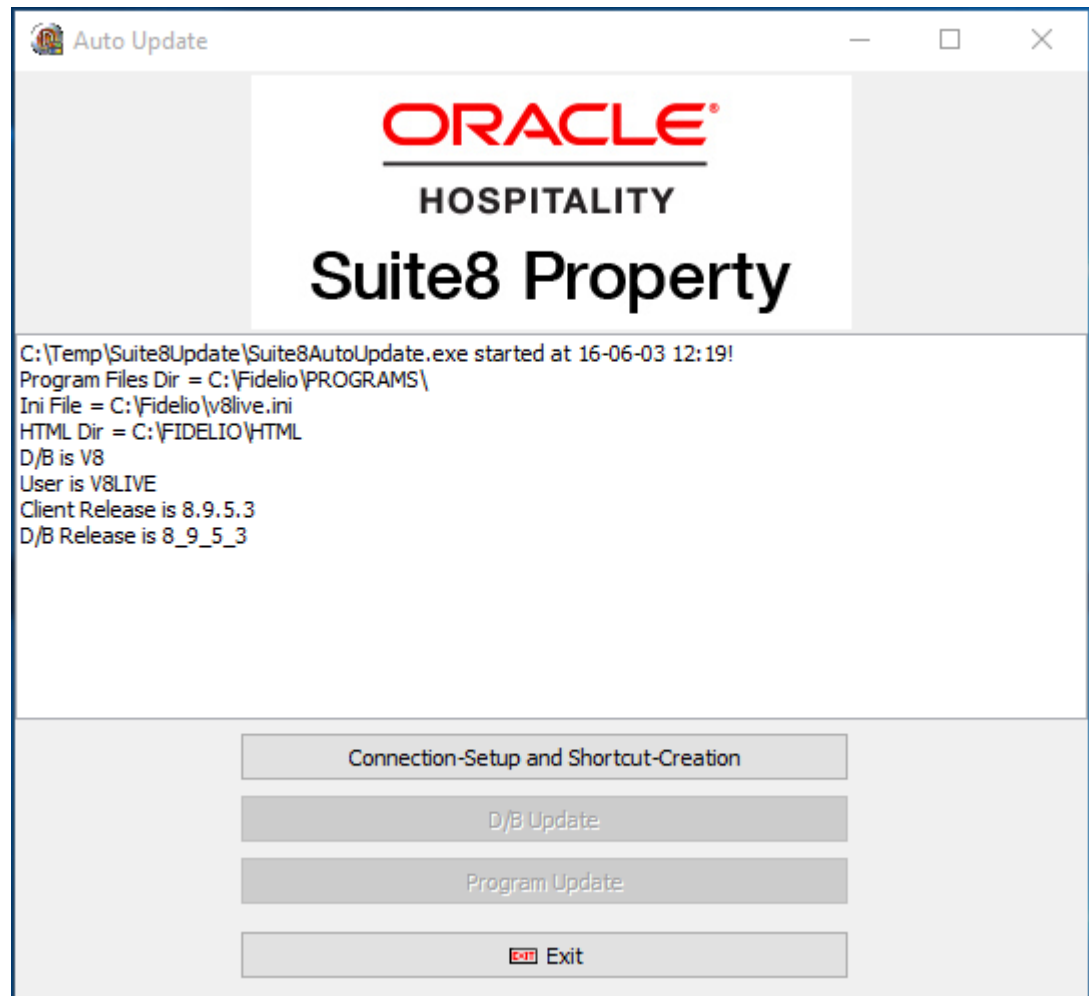
This message indicates the installed Suite8 version is earlier than Suite8 release 8.10. You must update to Suite8 release 8.10 or higher and create new shortcut.



Issue: Button for D/B-Update or Program Update is grayed out.

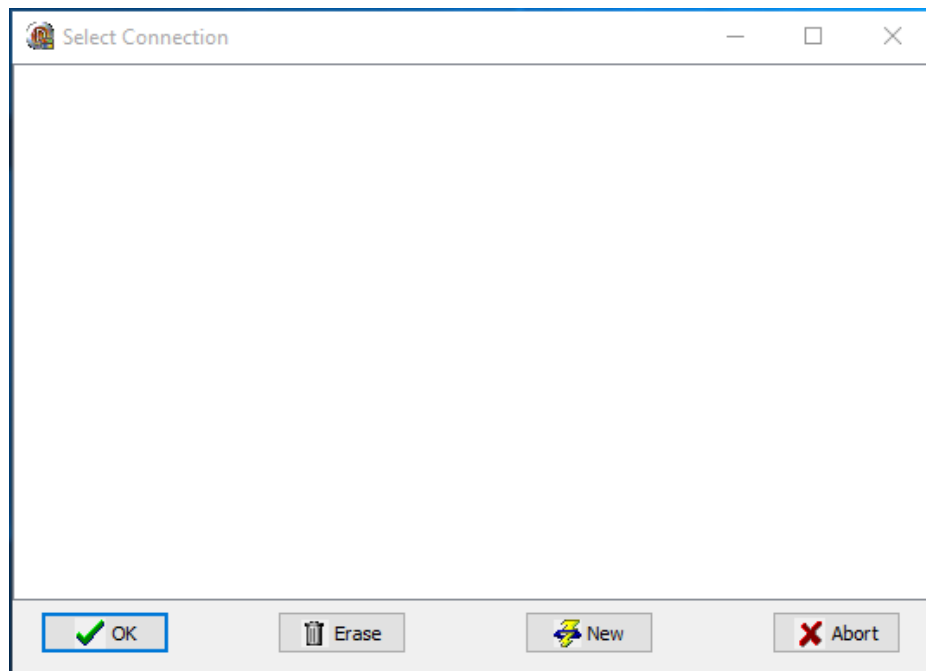
If the Suite8 version installed is lower than release 8.10 or the version is already up-to-date.

To solve this update Suite8 to release 8.10 and start the InstallShield Wizard to try again. If Suite8 is up-to-date, then click Exit. The installed program Client Release version and the D/B Release database version appears in the main window.

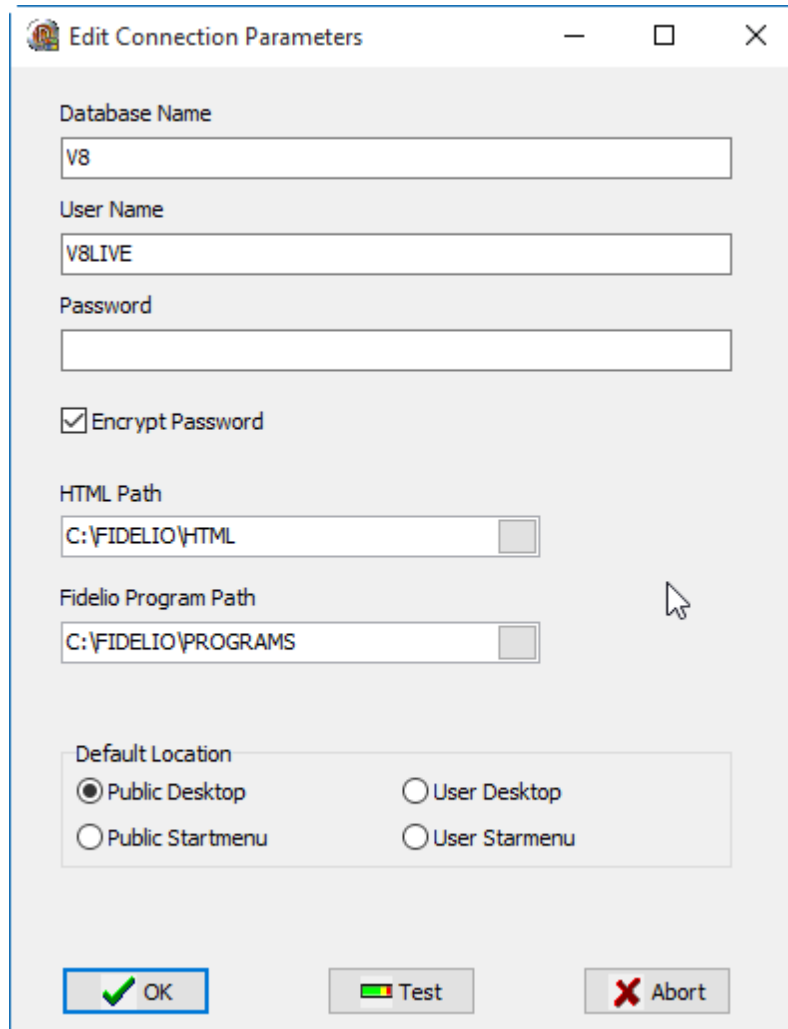


Issue: The select connection screen is empty

If the Suite8 shortcuts do not appear on the connection screen, then you must create a new shortcut using the **New** option.



On the Edit Connection Parameters window, review and define the following fields.



Database Name

V8

User Name

V8LIVE

Password

☒ Encrypt Password

HTML Path

C:\FIDELIO\HTML

Fidelio Program Path

C:\FIDELIO\PROGRAMS

Default Location

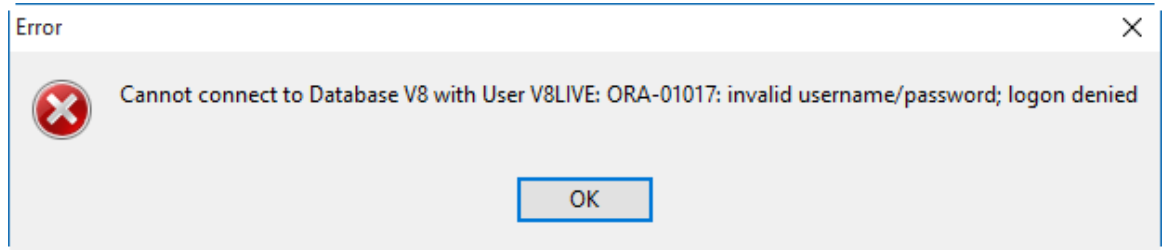
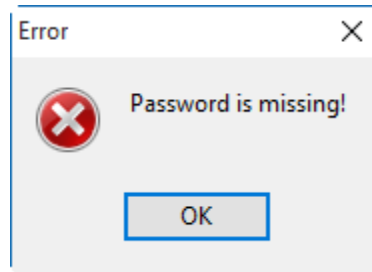
☒ Public Desktop ☐ User Desktop

☐ Public Startmenu ☐ User Startmenu

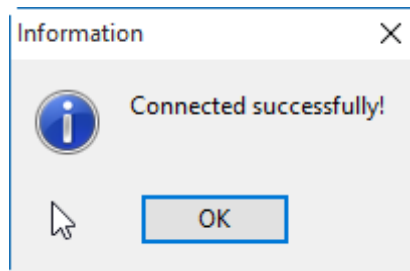
OK Test Abort

1. Define the **Database Name**. The default database name is V8.
2. Define the user name of the Oracle user. The default user name for live instances is V8LIVE, and for training instances is V8TRAIN.
3. Enter the password for the Oracle user.
4. Encrypt Password: To maintain Oracle security standards you must encrypt the password. By default, the checkbox is checked to maintain a secure system.
5. The path where the HTML and query files are located. The default location is C:\FIDELIO\HTML
6. Select the path for the program files, the default location is C:\FIDELIO\PROGRAMS
7. Select the default location where the shortcut should appear.
8. Select the **Public Desktop** or **Public Startmenu** to create a shortcut icon to appear for the current user.
9. Click **Test** to check the database connection.

If you get an error message below, review your entries and try again.



10. If the connection is valid, this message below appears.



11. Click **OK** to finish. A Suite8 shortcut is created on the desktop. Click **Exit** to close the InstallShield Wizard.