

# **Oracle® Retail Replenishment Optimization**

Installation Guide

Release 13.2.3

**E23492-01**

August 2011

Copyright © 2011, Oracle and/or its affiliates. All rights reserved.

Primary Author: Melissa Artley

This software and related documentation are provided under a license agreement containing restrictions on use and disclosure and are protected by intellectual property laws. Except as expressly permitted in your license agreement or allowed by law, you may not use, copy, reproduce, translate, broadcast, modify, license, transmit, distribute, exhibit, perform, publish, or display any part, in any form, or by any means. Reverse engineering, disassembly, or decompilation of this software, unless required by law for interoperability, is prohibited.

The information contained herein is subject to change without notice and is not warranted to be error-free. If you find any errors, please report them to us in writing.

If this software or related documentation is delivered to the U.S. Government or anyone licensing it on behalf of the U.S. Government, the following notice is applicable:

U.S. GOVERNMENT RIGHTS Programs, software, databases, and related documentation and technical data delivered to U.S. Government customers are "commercial computer software" or "commercial technical data" pursuant to the applicable Federal Acquisition Regulation and agency-specific supplemental regulations. As such, the use, duplication, disclosure, modification, and adaptation shall be subject to the restrictions and license terms set forth in the applicable Government contract, and, to the extent applicable by the terms of the Government contract, the additional rights set forth in FAR 52.227-19, Commercial Computer Software License (December 2007). Oracle USA, Inc., 500 Oracle Parkway, Redwood City, CA 94065.

This software is developed for general use in a variety of information management applications. It is not developed or intended for use in any inherently dangerous applications, including applications which may create a risk of personal injury. If you use this software in dangerous applications, then you shall be responsible to take all appropriate fail-safe, backup, redundancy, and other measures to ensure the safe use of this software. Oracle Corporation and its affiliates disclaim any liability for any damages caused by use of this software in dangerous applications.

Oracle is a registered trademark of Oracle Corporation and/or its affiliates. Other names may be trademarks of their respective owners.

This software and documentation may provide access to or information on content, products, and services from third parties. Oracle Corporation and its affiliates are not responsible for and expressly disclaim all warranties of any kind with respect to third-party content, products, and services. Oracle Corporation and its affiliates will not be responsible for any loss, costs, or damages incurred due to your access to or use of third-party content, products, or services.

**Licensing Note:** This media pack includes a Restricted Use license for Oracle Retail Predictive Application Server (RPAS) - Enterprise Engine to support Oracle® Retail Replenishment Optimization only.

## Value-Added Reseller (VAR) Language

### Oracle Retail VAR Applications

The following restrictions and provisions only apply to the programs referred to in this section and licensed to you. You acknowledge that the programs may contain third party software (VAR applications) licensed to Oracle. Depending upon your product and its version number, the VAR applications may include:

(i) the **MicroStrategy** Components developed and licensed by MicroStrategy Services Corporation (MicroStrategy) of McLean, Virginia to Oracle and imbedded in the MicroStrategy for Oracle Retail Data Warehouse and MicroStrategy for Oracle Retail Planning & Optimization applications.

(ii) the **Wavelink** component developed and licensed by Wavelink Corporation (Wavelink) of Kirkland, Washington, to Oracle and imbedded in Oracle Retail Mobile Store Inventory Management.

(iii) the software component known as **Access Via**™ licensed by Access Via of Seattle, Washington, and imbedded in Oracle Retail Signs and Oracle Retail Labels and Tags.

(iv) the software component known as **Adobe Flex**™ licensed by Adobe Systems Incorporated of San Jose, California, and imbedded in Oracle Retail Promotion Planning & Optimization application.

You acknowledge and confirm that Oracle grants you use of only the object code of the VAR Applications. Oracle will not deliver source code to the VAR Applications to you. Notwithstanding any other term or condition of the agreement and this ordering document, you shall not cause or permit alteration of any VAR Applications. For purposes of this section, "alteration" refers to all alterations, translations, upgrades, enhancements, customizations or modifications of all or any portion of the VAR Applications including all reconfigurations, reassembly or reverse assembly, re-engineering or reverse engineering and recompilations or reverse compilations of the VAR Applications or any derivatives of the VAR Applications. You acknowledge that it shall be a breach of the agreement to utilize the relationship, and/or confidential information of the VAR Applications for purposes of competitive discovery.

The VAR Applications contain trade secrets of Oracle and Oracle's licensors and Customer shall not attempt, cause, or permit the alteration, decompilation, reverse engineering, disassembly or other reduction of the VAR Applications to a human perceivable form. Oracle reserves the right to replace, with functional equivalent software, any of the VAR Applications in future releases of the applicable program.



---

---

# Contents

<b>Send Us Your Comments .....</b>	<b>vii</b>
<b>Preface .....</b>	<b>ix</b>
Audience .....	ix
Documentation Accessibility .....	ix
Related Documents .....	x
Customer Support .....	x
Review Patch Documentation .....	x
Oracle Retail Documentation on the Oracle Technology Network .....	x
Conventions .....	xi
 <b>1 Introduction</b>	
About This Document .....	1-1
Hardware and Software Requirements .....	1-2
Supported Oracle Retail Products .....	1-2
 <b>2 Installing RO on UNIX Environments</b>	
Preparation .....	2-1
Environment Variable Setup Script .....	2-1
Additional Required Environment Variables .....	2-2
All Platforms .....	2-2
Extracting the Replenishment Optimization Installation Package .....	2-2
Installation Instructions .....	2-3
Domain Scripts .....	2-10
Post Installation Tasks .....	2-10
Configuration Files for the RPAS Fusion Client .....	2-10
 <b>3 Patch Installation</b>	
Upgrade Prerequisites .....	3-1
Upgrade Process .....	3-2
For the PC .....	3-2
For the Server .....	3-2

## **A Appendix: Installation Order**

Enterprise Installation Order .....	A-1
-------------------------------------	-----

---

---

## Send Us Your Comments

Oracle Retail Replenishment Optimization Installation Guide, Release 13.2.3

Oracle welcomes customers' comments and suggestions on the quality and usefulness of this document.

Your feedback is important, and helps us to best meet your needs as a user of our products. For example:

- Are the implementation steps correct and complete?
- Did you understand the context of the procedures?
- Did you find any errors in the information?
- Does the structure of the information help you with your tasks?
- Do you need different information or graphics? If so, where, and in what format?
- Are the examples correct? Do you need more examples?

If you find any errors or have any other suggestions for improvement, then please tell us your name, the name of the company who has licensed our products, the title and part number of the documentation and the chapter, section, and page number (if available).

---

---

**Note:** Before sending us your comments, you might like to check that you have the latest version of the document and if any concerns are already addressed. To do this, access the Online Documentation available on the Oracle Technology Network Web site. It contains the most current Documentation Library plus all documents revised or released recently.

---

---

Send your comments to us using the electronic mail address:  
retail-doc\_us@oracle.com

Please give your name, address, electronic mail address, and telephone number (optional).

If you need assistance with Oracle software, then please contact your support representative or Oracle Support Services.

If you require training or instruction in using Oracle software, then please contact your Oracle local office and inquire about our Oracle University offerings. A list of Oracle offices is available on our Web site at [www.oracle.com](http://www.oracle.com).





---

---

# Preface

Oracle Retail Installation Guides contain the requirements and procedures that are necessary for the retailer to install Oracle Retail products.

## Audience

This Installation Guide is written for the following audiences:

- Database administrators (DBA)
- System analysts and designers
- Integrators and implementation staff

## Documentation Accessibility

Our goal is to make Oracle products, services, and supporting documentation accessible to all users, including users that are disabled. To that end, our documentation includes features that make information available to users of assistive technology. This documentation is available in HTML format, and contains markup to facilitate access by the disabled community. Accessibility standards will continue to evolve over time, and Oracle is actively engaged with other market-leading technology vendors to address technical obstacles so that our documentation can be accessible to all of our customers. For more information, visit the Oracle Accessibility Program Web site at <http://www.oracle.com/accessibility/>.

### Accessibility of Code Examples in Documentation

Screen readers may not always correctly read the code examples in this document. The conventions for writing code require that closing braces should appear on an otherwise empty line; however, some screen readers may not always read a line of text that consists solely of a bracket or brace.

### Accessibility of Links to External Web Sites in Documentation

This documentation may contain links to Web sites of other companies or organizations that Oracle does not own or control. Oracle neither evaluates nor makes any representations regarding the accessibility of these Web sites.

### Access to Oracle Support

Oracle customers have access to electronic support through My Oracle Support. For information, visit <http://www.oracle.com/support/contact.html> or visit <http://www.oracle.com/accessibility/support.html> if you are hearing impaired.

## Related Documents

For more information, see the following documents in the Oracle Retail Replenishment Optimization Release 13.2.3 documentation set:

- *Oracle Retail Replenishment Optimization Release Notes*
- *Oracle Retail Replenishment Optimization User Guide for the RPAS Fusion Client*
- *Oracle Retail Replenishment Optimization Online Help for RPAS Fusion Client*

## Customer Support

To contact Oracle Customer Support, access My Oracle Support at the following URL:

<https://support.oracle.com>

When contacting Customer Support, please provide the following:

- Product version and program/module name
- Functional and technical description of the problem (include business impact)
- Detailed step-by-step instructions to recreate
- Exact error message received
- Screen shots of each step you take

## Review Patch Documentation

When you install the application for the first time, you install either a base release (for example, 13.1) or a later patch release (for example, 13.1.2). If you are installing the base release, additional patch, and bundled hot fix releases, read the documentation for all releases that have occurred since the base release before you begin installation. Documentation for patch and bundled hot fix releases can contain critical information related to the base release, as well as information about code changes since the base release.

## Oracle Retail Documentation on the Oracle Technology Network

Documentation is packaged with each Oracle Retail product release. Oracle Retail product documentation is also available on the following Web site:

[http://www.oracle.com/technology/documentation/oracle\\_retail.html](http://www.oracle.com/technology/documentation/oracle_retail.html)

(Data Model documents are not available through Oracle Technology Network. These documents are packaged with released code, or you can obtain them through My Oracle Support.)

Documentation should be available on this Web site within a month after a product release.

# Conventions

The following text conventions are used in this document:

Convention	Meaning
<b>boldface</b>	Boldface type indicates graphical user interface elements associated with an action, or terms defined in text or the glossary.
<i>italic</i>	Italic type indicates book titles, emphasis, or placeholder variables for which you supply particular values.
<code>monospace</code>	Monospace type indicates commands within a paragraph, URLs, code in examples, text that appears on the screen, or text that you enter.



---

# Introduction

This document provides detailed instructions on how to install a Replenishment Optimization (RO) domain using a configuration created with the RPAS Configuration Tools. This document does not describe how to create the actual configuration.

Supplemental installation guides are referenced in this document. The *Oracle Retail Predictive Application Server Installation Guide* and the *Oracle Retail Predictive Application Server Configuration Tools User Guide* must be obtained prior to beginning the installation process. Read these documents in their entirety before beginning the installation.

## About This Document

This document provides information for full and patch installations. It contains the following chapters:

- [Chapter 1, "Introduction"](#) – Refer to this chapter for hardware and software requirements and supported Oracle Retail products
- [Chapter 2, "Installing RO on UNIX Environments"](#) – Refer to this chapter if you are performing a full installation.
- [Chapter 3, "Patch Installation"](#) – Refer to this chapter if you are performing a patch installation.
- [Appendix A, "Appendix: Installation Order"](#) – Refer to this appendix for the installation order.

Please read this entire guide before beginning the installation process to ensure that you understand the installation process and have all the necessary documentation, hardware, and software available.

## Hardware and Software Requirements

Table 1–1 provides information on the hardware and software requirements:

**Table 1–1 Hardware and Software Requirements**

Requirement	Details
Supported RPAS Version	13.2.3
Supported OS, Server and Compilers	<ul style="list-style-type: none"> <li>■ AIX 5.3 (POWER) - TL12 SP1: GCC 4.1.1 (64 bit)</li> <li>■ AIX 6.1 (POWER) -TL6: GCC 4.3.3 (64 bit)</li> <li>■ Oracle Linux 5, Update 5 (5.5): GCC 4.1.2 (64 bit)</li> <li>■ Red Hat Enterprise Linux 5.5: GCC 4.1.2 (64 bit)</li> <li>■ Oracle Solaris 10 (SPARC) Update 5, with time zone patch 122032-01 and libc patch 119689-07: Solaris Studio 12.2</li> <li>■ HP-UX Itanium 11.31, Sept. 2010 Quality Pack: ACC 6.20 (64 bit)</li> </ul>
Supported OS, Classic Client	<ul style="list-style-type: none"> <li>■ Microsoft Windows XP Professional SP3 with Microsoft Office 2003</li> <li>■ Microsoft Windows 7 Professional (Service Pack 1) with Microsoft Office 2007)</li> <li>■ Microsoft Windows Vista</li> </ul> <p><b>Note:</b> After the 13.2.3 release, Microsoft Vista will no longer be supported.</p>
Supported OS, Fusion Client Application Server	<ul style="list-style-type: none"> <li>■ AIX 6.1 (POWER) - TL6 (64 bit)</li> <li>■ Oracle Linux 5, Update 5 (5.5) (64 bit)</li> <li>■ Red Hat Enterprise Linux 5.5 (64 bit)</li> <li>■ Oracle Solaris 10 (SPARC) Update 5, with time zone patch 122032-01 and libc patch 119689-07</li> <li>■ HP-UX Itanium 11.31, Sept. 2010 Quality Pack (64 bit)</li> </ul> <p><b>Note:</b> The operating systems you choose for the RPAS server and the application server for the RPAS Fusion Client do not need to be the same.</p>
Supported OS, Fusion Client	<ul style="list-style-type: none"> <li>■ Microsoft Windows XP Professional SP3 with Microsoft Office 2003</li> <li>■ Microsoft Windows 7 Professional (Service Pack 1) with Microsoft Office 2007)</li> </ul>
Required 3rd Party Software	<p>Oracle Java Runtime Environment (JRE) 1.6</p> <p><b>Note:</b> When installing Java, avoid enabling AutoUpdate because it may update the Java version without prompting.</p>

## Supported Oracle Retail Products

The following Oracle Retail products are supported:

**Table 1–2 Supported Oracle Retail Products**

Requirement	Version
Oracle Retail Analytic Parameter Calculator for Replenishment Optimization (APC-RO)	13.2.2
Oracle Retail Demand Forecasting (RDF)	13.2.3
Oracle Retail Advanced Inventory Planning (AIP)	13.2.2

---

## Installing RO on UNIX Environments

---

The installation of the server-side RPAS components on UNIX operating systems is accomplished using a Java-based installation program that is included with the installation package.

The RO Installer automates the following:

- Installation of the RO mock install configuration
- Custom configuration of make\_domain.ro script for creating domains
- Creation of a sample RO domain

This document assumes that the RPAS Installer process (from the *RPAS Installation Guide*) has been completed prior to using the RO Installer.

### Preparation

The RPAS components required prior to this installation process are available from Oracle's E-Delivery Web site, <http://edelivery.oracle.com/>, and My Oracle Support, <https://support.oracle.com>.

If you are installing any RPAS solution on HP Itanium, you need to set the 64-bit Configuration Tools environment variable for Java as shown below:

```
export RIDE_OPTIONS=-d64
```

### Environment Variable Setup Script

Before running the solution installer, run the **retaillogin.ksh** script. The script is located in the root of the base directory where RPAS was installed unless the default was overwritten when specifying directory paths.

Source the script from inside the directory where the script is located:

```
. ./retaillogin.ksh
```

or

Include the full path after the period ".":

```
. /<base_directory>/retaillogin.ksh
```

---

**Note:** The preceding period and space (". ") must be included at the beginning of the command when executing the script.

---

---

---

**Note:** Include this path and script in the *.profile* in your home directory (*~/ .profile*) if you want to have this environment setup script run during login.

---

---

This script will set up environment variables, such as `RPAS_HOME` and `RIDE_HOME`, which are required for RPAS to run properly.

## Additional Required Environment Variables

In addition to the execution of `retaillogin.ksh`, export the following environment variables prior to starting your installer.

---

---

**Note:** The commands listed in this section are an example based on common Java installation structures. To ensure that you are adding the correct path, use the Unix *find* command to locate `libjvm.so` (find `$JAVA_HOME -name libjvm.so`) and adjust the below paths as appropriate.

---

---

### All Platforms

export

```
RPAS_JAVA_CLASSPATH="$RPAS_HOME/applib/aaijni.jar:$RPAS_HOME/applib/aaiReplenOpt.jar"
```

---

---

**Note:** There are additional Java environment variables that must be set for your particular operation system. These variables are the same for all applications on RPAS. See the "Java Environment" section of the *Oracle Retail Predictive Application Server Installation Guide* for these environment variables.

---

---

## Extracting the Replenishment Optimization Installation Package

Complete the following steps to extract the installation package:

1. Create an installation directory from which the RO installation routine will be run. This directory will be referred to as [RO Installation].
2. Download the RO Media Pack from Oracle E-Delivery, and transfer the archive to the [RO Installation] directory on the target server using FTP. Use binary mode to transfer the archive.
3. Extract the main package to the [RO Installation] directory.

```
cd [RO Installation]
unzip ro_13.2.2.zip
```
4. Extract the RO Installer.

```
cd CDROM
upzip [RO Media Pack]
```



## Installation Instructions

Complete the following steps to install RO:

1. Change to the RO Installer directory and run the following command:

```
cd ro
./install.sh
```

---

**Note:** The command must be executed with the preceding period and forward slash.

---

If this process is performed on an X-Windows emulator (such as Exceed), a graphical user interface to the Installer opens. If you are running in console mode through a terminal emulator, a text interface to the Installer opens.

In both cases, the requested information is identical but displayed differently. In the GUI you may be shown a check box to signal whether you want a component installed; in text mode, you are prompted for a response of yes or no.

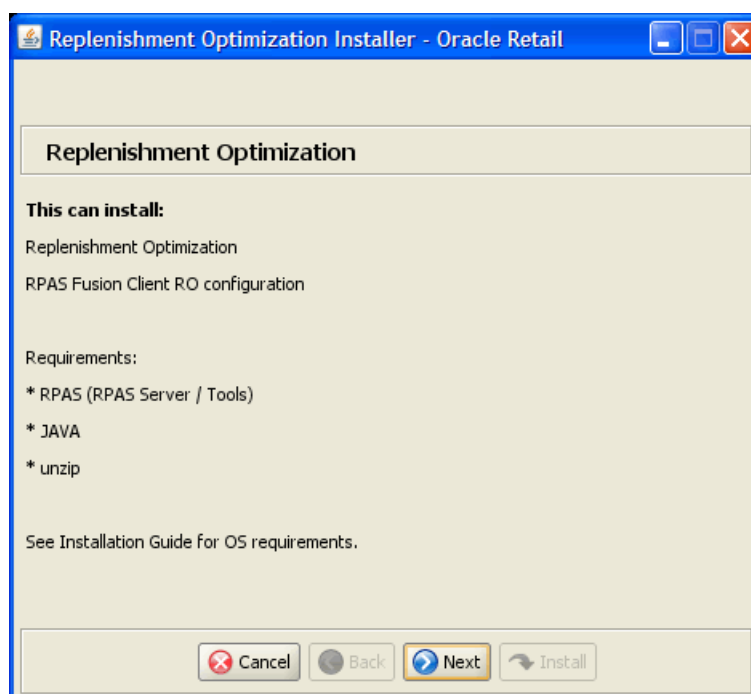
---

**Note:** In text mode, the default value appears in square brackets. To use the default value and continue, click **Enter**. If you want to use a different value, enter the new value. When prompted to create a directory respond with **Y** or yes and click **Enter**.

---

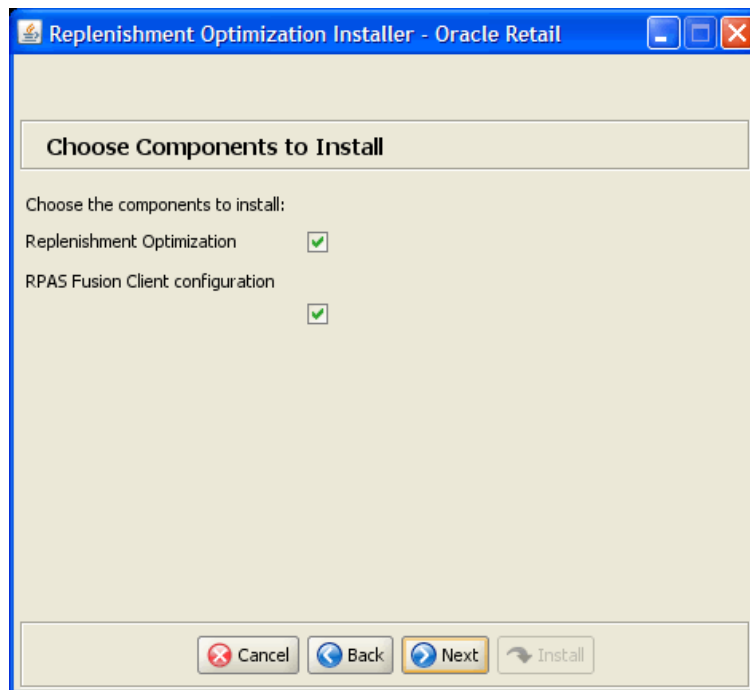
2. The [RO Installation Window](#) opens and shows the components that are installed during installation process as well as other required components. Click **Next** to continue.

**Figure 2–1** RO Installation Window



3. The [Choose Components to Install Window](#) opens.

**Figure 2–2** *Choose Components to Install Window*



Select the following options:

- **Replenishment Optimization** – Select this option to install the RO server with the domain.
- **RPAS Fusion Client configuration** – Select this option to install the RPAS Fusion Client configuration for RO. For more information on the configuration files included for the RPAS Fusion Client, see [Configuration Files for the RPAS Fusion Client](#).

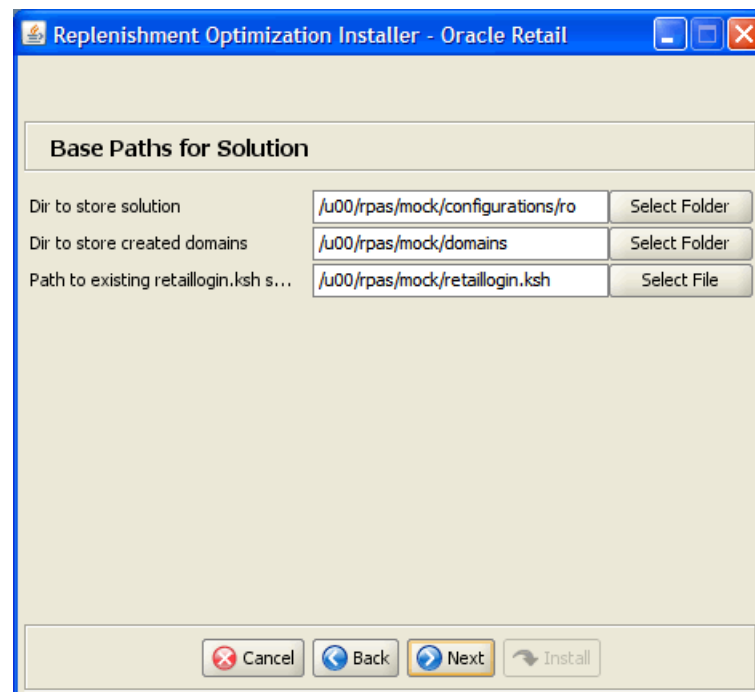
---

**Note:** If you do not want to install the RPAS Fusion Client configuration, clear this check box, and skip steps 7 and 8.

---

Click **Next** to continue.

4. The [Base Paths for Solution Window](#) opens.

**Figure 2–3 Base Paths for Solution Window**


---

**Note:** Ensure that the installation paths are located outside of the installer directory [RO\_Installer].

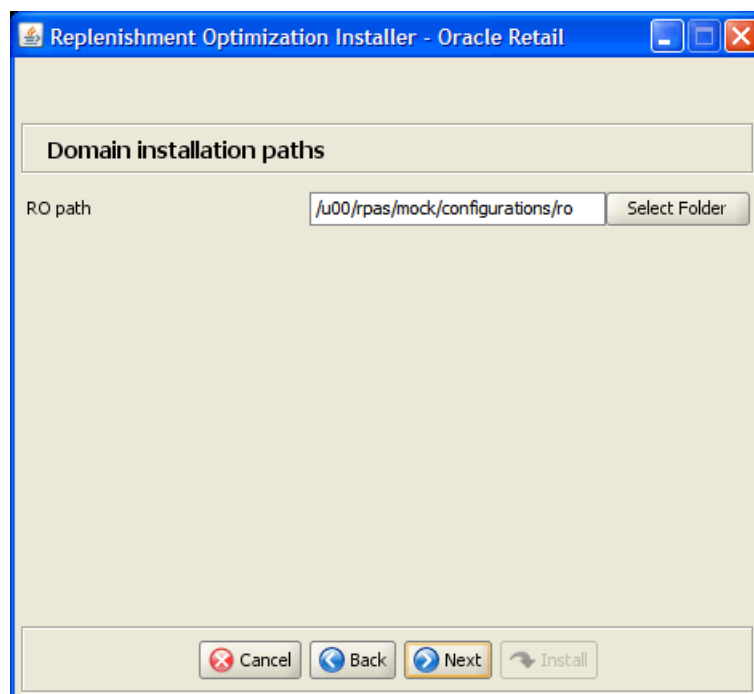
---

Enter the relevant information in the following fields:

- **Dir to store solution** - Enter the directory path where your solution should be stored.
- **Dir to store created domains** - Enter the directory path where domains for this solution should be stored (used to create domain paths on the following window).
- **Path to retaillogin.ksh script** - Path to the retaillogin.ksh script created during RPAS installation.

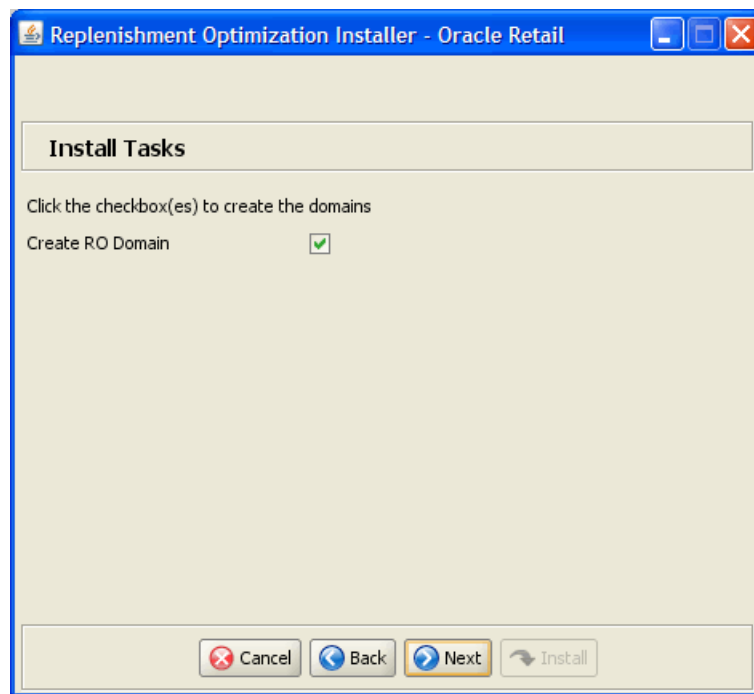
Click **Next** to continue.

5. The [Domain Installation Paths Window](#) opens.

**Figure 2–4 Domain Installation Paths Window**

Enter the path to the RO domain to be created and click **Next** to continue.

6. The [Install Tasks Window](#) opens.

**Figure 2–5 Install Tasks Window**

If you want to....	Then....
Create the RO domain	Select <b>Create RO Domain</b> and click <b>Next</b> .
Install all required components to support the RO domain, but not create the actual RO domain	Clear the <b>Create RO Domain</b> check box and click <b>Next</b> .

---

**Note:** If you are not installing the RPAS Fusion Client configuration, proceed to step 9.

---



---

**Note:** Domain builds use the environment specified in the retaillogin.ksh environment setup script. If you change any environment details, edit the retaillogin.ksh script and any subsequent scripts called by retaillogin.ksh.

For more information about the retaillogin.ksh script, refer to the section: "[Environment Variable Setup Script](#)".

---

7. The [Fusion Location Information Window 1](#) opens.

**Figure 2–6 Fusion Location Information Window 1**

The screenshot shows a window titled "Replenishment Optimization Installer - Oracle Retail". Inside the window, there is a section titled "Fusion Location Information". Below this title, the text reads: "Enter the number of RPAS Fusion Client servers to install these configurations on:". Below this text, there is a label "(1-4)" and a text input field containing the number "1". Below this, the text reads: "Enter the RPAS server hostname:". Below this text, there is a text input field containing the value "localhost". Below this, the text reads: "Enter the RPAS server port:". Below this text, there is a text input field containing the value "55555". At the bottom of the window, there are four buttons: "Cancel", "Back", "Next", and "Install". The "Next" button is highlighted with a yellow border.

---

**Note:** The Fusion Location Information windows appear when you select the RPAS Fusion Client configuration check box on the Choose Components to Install window.

If you are not installing the RPAS Fusion Client configuration, proceed to step 9.

---

Enter the following information and click **Next** to continue:

- Enter the number of servers running the RPAS Fusion Client where you want to install the RO configuration. If the RPAS Fusion Client is running on a single server, enter 1. If you have a clustered installation, you can enter up to four servers.
  - Enter the host name and port number of the RPAS server.
8. For each RPAS Fusion Client server, the [Fusion Location Information Window 2](#) opens.

**Figure 2–7 Fusion Location Information Window 2**

The screenshot shows a window titled "Replenishment Optimization Installer - Oracle Retail". Inside, there's a section titled "Fusion Location Information". Below this, it says "Enter the details for RPAS Fusion Client #1". There are four input fields: "Hostname or IP" (containing "localhost"), "Configuration Directory" (empty), "Login username" (empty), and "Login password" (empty). Below these fields, there's a text box with the instruction: "Enter both username and password if you want to save the login credentials to the secure wallet. Otherwise, login credentials will be retrieved from the wallet based on the user alias." At the bottom of the main content area, there's a field labeled "Enter an alias for the username." with a text input. At the very bottom, there are four buttons: "Cancel", "Back", "Next" (highlighted with a yellow border), and "Install".

Enter the following information and click **Next** to continue:

---

**Note:** As part of the Oracle Software Security Assurance, sensitive information such as user credentials for the RPAS Fusion Client are encrypted and stored in a secure location in the application installation directory. This location is called the Oracle Wallet.

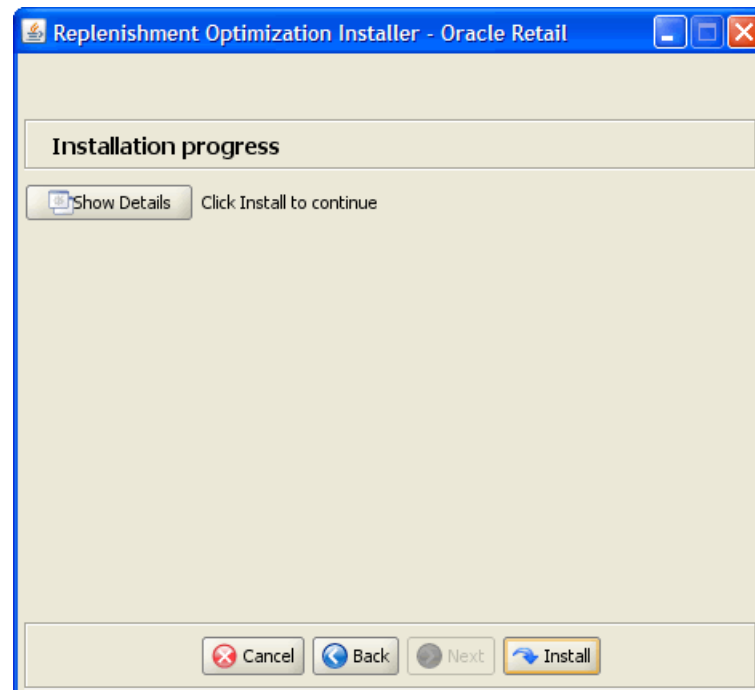
When the installation starts, the administrative user credentials will be retrieved from the Oracle Wallet based on the alias name specified in this window.

---

- **Hostname or IP** – Enter the host name or IP address of the server where the RPAS Fusion Client is installed.
- **Configuration Directory** – Enter the location of the config directory available at the location where the RPAS Fusion Client is installed.
- **Login username** – Enter the user name to log on to the server where the RPAS Fusion Client is installed.

- **Login password** – Enter the password associated with the user name.
  - **Login username alias** – Specify an alias name for the administrative user. Specifying an alias name for the administrative user enhances the security for the application. When left blank, the alias name defaults to the administrative user name.
9. The [Installation Progress Window](#) opens.

**Figure 2–8 Installation Progress Window**



Click **Install** to begin installing RO.

This window displays installation progress. Select **Show Details** if you want to view the log output as the installation is performed. If you choose not to view the details, a graphical representation of the installation steps opens. As each step is completed, the text color changes to indicate installation progress.

You can toggle between the Show Details mode at any time during or after the installation.

10. When the installation process is finished, the Complete window opens. Click **OK**.
- If you viewed the installation through the graphical progress, you can now click **Show Details** to view the logs.
  - Once you are finished reviewing the installation, click **Exit** button to close the installer application.
  - If you wish to view the log at a later date, a text copy was saved in the directory where you initiated the installation from [RO Installation]/CDROM/ro. The log file is named based on the product and a timestamp, followed by the **.log** extension.

## Domain Scripts

Created as part of the installation process is a sample domain creation script, located in the [Dir to store configurations] entered previously. This file is named make\_domain.ro. This file contains all of the required parameters needed to support the domain installation process. If necessary, this file may be modified if the default parameters are not applicable for your particular environment.

---

**Note:** The domain installation process also includes post-installation data loading scripts specific to this configuration. These scripts may also be modified.

---

## Post Installation Tasks

After you have installed RO, perform the following post installation tasks.

- Before starting the DomainDaemon, you must first source the solution's environment.ksh script. This loads all environment variables required by RPAS to interact with your solution's workbooks. To do this, either in shell or with an addition to your .profile, add . [Solution Install Dir]/bin/ro\_environment.sh.
- If you are on AIX and you have re-installed RO, you must edit a help file to use the RO online help in the RPAS Fusion Client. Manually edit the [fusion client installation dir]/config/ohwconfig.xml file by removing the following duplicate line:

```
<helpSet xmlns="" id="<shortProductName>"  
location="<shortProductName>/<shortProductName>-help.hs"/>
```

---

**Caution:** If this duplicate line is not removed, a *500 Page Not Found* error occurs when attempting to access the online help in the RPAS Fusion Client.

---

## Configuration Files for the RPAS Fusion Client

This section describes the optional installation method that involves setting up the RPAS Fusion Client configuration and online help for the RO configuration. Skip this section if you chose to install the Fusion Client configuration files using the RO installer.

---

**Note:** Before proceeding, ensure that you have appropriate access privileges on the server running the RPAS Fusion Client.

---

Along with the files to install the Replenishment Optimization solution and domain, the Replenishment Optimization installation media pack also includes the RPAS Fusion Client configuration and online help files that you must install if you want to use Replenishment Optimization on the RPAS Fusion Client.

These files are available at the following location within the [RO Installation] directory:

```
[RO Installation]/replen_opt/fusion
```

During the Replenishment Optimization installation, these files are automatically copied over to the configuration directory where the RPAS Fusion Client is installed.



The installation also ensures that the following RPAS Fusion Client configuration files are updated to reflect the Replenishment Optimization installation:

- `ProfileList.xml` - Located in the `[RPAS Fusion Client Installation]/config/rpas` directory. This XML file includes the domain configuration available for use with the RPAS Fusion Client.
- `ohwconfig.xml` - Located in the `[RPAS Fusion Client Installation]/config/Help` directory. This XML file includes the online help configuration for the RPAS Fusion Client.

If you do not install the Fusion Client configuration files during the Replenishment Optimization installation, you can choose to do one of the following tasks:

- Run the Replenishment Optimization installer again, and select to install only the RPAS Fusion Client configuration.
- Run the RPAS Fusion Client installer again, and specify the Replenishment Optimization domain configuration. For more information on the RPAS Fusion Client installation, refer to the *Oracle Retail Predictive Application Server Installation Guide*.
- Configure the RPAS Fusion Client for RO manually. For more information, see the "Configuring Additional Domains" section in the *Oracle Retail Predictive Application Server Administration Guide for the Fusion Client*.



---

## Patch Installation

This chapter describes how you can upgrade RO from a previous release to 13.2.3.

### Upgrade Prerequisites

In order to upgrade RO, first verify the following criteria for the RPAS system:

- Verify that RPAS is currently installed.
- Verify that the UNIX operating system is updated to the currently supported version, which can be found in the [Hardware and Software Requirements](#) section on page 1-2.
- Verify that the environment variables are correctly set for both the server and PC; if they are not, follow these instructions to set them:
  - Change directories to the original RPAS installation directory (such as the one created by the most recent installer), and run the retaillogin.ksh script to set all environment variables. For example:

```
$ cd /retail
$ . ./retaillogin.ksh
```

---

#### Notes:

- Once you have run the script, verify that all the environment variables point to the correct locations on your environment.
  - If you have updated Java since the last installation of RPAS, verify that the JAVA\_HOME path is correct. If not, update your retaillogin.ksh script and source it again as outlined above.
-

## Upgrade Process

The following process outlines how you can upgrade RO to the new version using the RPAS Configuration Tools.

### For the PC

1. Open RPAS Configuration Tools.
2. In RPAS Configuration Tools, load your previous configuration of RO:
  - a. From the Configuration Tools File menu, select **Open**.
  - b. From the Open window, locate the configuration file and click **Open**.
3. If your configuration requires updating, dialog boxes will prompt you to upgrade. Follow the instructions given in the dialog boxes.
4. In the RPAS Configuration Tools File menu, click **Save** to save the configuration.
5. Zip the configuration in Cygwin and transfer the **.zip** file to the RPAS server. Note where it is saved. You will need this configuration for Step 2 of the section, "[For the Server](#)".

### For the Server

1. Upgrade the RPAS server configuration by running the installer:
  - a. Begin the installer as described in the [Installation Instructions](#) on page 2-3.
  - b. Complete steps 1-5.
  - c. At step 6, the [Install Tasks Window](#), clear the **Create RO Domain** check box.
  - d. Finish the remaining steps of the installer.
2. Unzip the updated configuration and note where it is extracted. You saved this configuration in Step 5 of the section, "[For the PC](#)".
3. Upgrade your RO domain to a 13.2.3 domain. For upgrading instructions, refer to the "Upgrading and Patching Domains" section in the *Oracle Retail Predictive Application Server Administration Guide for the Classic Client* or the *Oracle Retail Predictive Server Administration Guide for the Fusion Client*.

---

---

**Note:** Whether or not you are taking the latest configuration, a configuration patch must be run over the domain to ensure compatibility with the latest RPAS version.

---

---

---

## Appendix: Installation Order

This section provides a guideline for the order in which the Oracle Retail applications should be installed. If a retailer has chosen to use only some of the applications, the order is still valid, less the applications not being installed.

---

**Note:** The installation order is not meant to imply integration between products.

---

### Enterprise Installation Order

1. Oracle Retail Merchandising System (RMS), Oracle Retail Trade Management (RTM), Oracle Retail Sales Audit (ReSA), Optional: Oracle Retail Fiscal Management (ORFM)

---

**Note:** ORFM is an optional application for RMS if you are implementing Brazil localization.

---

2. Oracle Retail Service Layer (RSL)
3. Oracle Retail Extract, Transform, Load (RETL)
4. Oracle Retail Active Retail Intelligence (ARI)
5. Oracle Retail Warehouse Management System (RWMS)
6. Oracle Retail Allocation
7. Oracle Retail Invoice Matching (ReIM)
8. Oracle Retail Price Management (RPM)

---

**Note:** During installation of RPM, you are asked for the RIBforRPM provider URL. Since RIB is installed after RPM, make a note of the URL you enter. If you need to change the RIBforRPM provider URL after you install RIB, you can do so by editing the `remote_service_locator_info_ribserver.xml` file.

---

9. Oracle Retail Central Office (ORCO)
10. Oracle Retail Returns Management (ORRM)
11. Oracle Retail Back Office (ORBO) or Back Office with Labels and Tags (ORLAT)

**12. Oracle Retail Store Inventory Management (SIM)**

---

**Note:** During installation of SIM, you are asked for the RIB provider URL. Since RIB is installed after SIM, make a note of the URL you enter. If you need to change the RIB provider URL after you install RIB, you can do so by editing the `remote_service_locator_info_ribserver.xml` file.

---

- 13. Oracle Retail Predictive Application Server (RPAS)**
- 14. Oracle Retail Demand Forecasting (RDF)**
- 15. Oracle Retail Category Management (CM)**
- 16. Oracle Retail Replenishment Optimization (RO)**
- 17. Oracle Retail Analytic Parameter Calculator Replenishment Optimization (APC RO)**
- 18. Oracle Retail Regular Price Optimization (RPO)**
- 19. Oracle Retail Merchandise Financial Planning (MFP)**
- 20. Oracle Retail Size Profile Optimization (SPO)**
- 21. Oracle Retail Assortment Planning (AP)**
- 22. Oracle Retail Item Planning (IP)**
- 23. Oracle Retail Item Planning Configured for COE (IP COE)**
- 24. Oracle Retail Advanced Inventory Planning (AIP)**
- 25. Oracle Retail Integration Bus (RIB)**
- 26. Oracle Retail Point-of-Service (ORPOS)**
- 27. Oracle Retail Markdown Optimization (MDO)**
- 28. Oracle Retail Clearance Optimization Engine (COE)**
- 29. Oracle Retail Analytic Parameter Calculator for Markdown Optimization (APC-MDO)**
- 30. Oracle Retail Analytic Parameter Calculator for Regular Price Optimization (APC-RPO)**
- 31. Oracle Retail Promotion Intelligence and Promotion Planning and Optimization (PI-PPO)**
- 32. Oracle Retail Workspace (ORW)**