

**Oracle® Retail Merchandise Financial Planning
Cloud Service**

Implementation Guide

Release 16.0.1

E87456-03

September 2017

Copyright © 2017, Oracle and/or its affiliates. All rights reserved.

Primary Author: Bernadette Goodman

Contributing Author: Venkatachalam Thiyagarajan

This software and related documentation are provided under a license agreement containing restrictions on use and disclosure and are protected by intellectual property laws. Except as expressly permitted in your license agreement or allowed by law, you may not use, copy, reproduce, translate, broadcast, modify, license, transmit, distribute, exhibit, perform, publish, or display any part, in any form, or by any means. Reverse engineering, disassembly, or decompilation of this software, unless required by law for interoperability, is prohibited.

The information contained herein is subject to change without notice and is not warranted to be error-free. If you find any errors, please report them to us in writing.

If this is software or related documentation that is delivered to the U.S. Government or anyone licensing it on behalf of the U.S. Government, then the following notice is applicable:

U.S. GOVERNMENT END USERS: Oracle programs, including any operating system, integrated software, any programs installed on the hardware, and/or documentation, delivered to U.S. Government end users are "commercial computer software" pursuant to the applicable Federal Acquisition Regulation and agency-specific supplemental regulations. As such, use, duplication, disclosure, modification, and adaptation of the programs, including any operating system, integrated software, any programs installed on the hardware, and/or documentation, shall be subject to license terms and license restrictions applicable to the programs. No other rights are granted to the U.S. Government.

This software or hardware is developed for general use in a variety of information management applications. It is not developed or intended for use in any inherently dangerous applications, including applications that may create a risk of personal injury. If you use this software or hardware in dangerous applications, then you shall be responsible to take all appropriate fail-safe, backup, redundancy, and other measures to ensure its safe use. Oracle Corporation and its affiliates disclaim any liability for any damages caused by use of this software or hardware in dangerous applications.

Oracle and Java are registered trademarks of Oracle and/or its affiliates. Other names may be trademarks of their respective owners.

Intel and Intel Xeon are trademarks or registered trademarks of Intel Corporation. All SPARC trademarks are used under license and are trademarks or registered trademarks of SPARC International, Inc. AMD, Opteron, the AMD logo, and the AMD Opteron logo are trademarks or registered trademarks of Advanced Micro Devices. UNIX is a registered trademark of The Open Group.

This software or hardware and documentation may provide access to or information about content, products, and services from third parties. Oracle Corporation and its affiliates are not responsible for and expressly disclaim all warranties of any kind with respect to third-party content, products, and services unless otherwise set forth in an applicable agreement between you and Oracle. Oracle Corporation and its affiliates will not be responsible for any loss, costs, or damages incurred due to your access to or use of third-party content, products, or services, except as set forth in an applicable agreement between you and Oracle.

Value-Added Reseller (VAR) Language

Oracle Retail VAR Applications

The following restrictions and provisions only apply to the programs referred to in this section and licensed to you. You acknowledge that the programs may contain third party software (VAR applications) licensed to Oracle. Depending upon your product and its version number, the VAR applications may include:

- (i) the **MicroStrategy** Components developed and licensed by MicroStrategy Services Corporation (MicroStrategy) of McLean, Virginia to Oracle and imbedded in the MicroStrategy for Oracle Retail Data Warehouse and MicroStrategy for Oracle Retail Planning & Optimization applications.
- (ii) the **Wavelink** component developed and licensed by Wavelink Corporation (Wavelink) of Kirkland, Washington, to Oracle and imbedded in Oracle Retail Mobile Store Inventory Management.
- (iii) the software component known as **Access Via**[™] licensed by Access Via of Seattle, Washington, and imbedded in Oracle Retail Signs and Oracle Retail Labels and Tags.
- (iv) the software component known as **Adobe Flex**[™] licensed by Adobe Systems Incorporated of San Jose, California, and imbedded in Oracle Retail Promotion Planning & Optimization application.

You acknowledge and confirm that Oracle grants you use of only the object code of the VAR Applications. Oracle will not deliver source code to the VAR Applications to you. Notwithstanding any other term or condition of the agreement and this ordering document, you shall not cause or permit alteration of any VAR

Applications. For purposes of this section, "alteration" refers to all alterations, translations, upgrades, enhancements, customizations or modifications of all or any portion of the VAR Applications including all reconfigurations, reassembly or reverse assembly, re-engineering or reverse engineering and recompilations or reverse compilations of the VAR Applications or any derivatives of the VAR Applications. You acknowledge that it shall be a breach of the agreement to utilize the relationship, and/or confidential information of the VAR Applications for purposes of competitive discovery.

The VAR Applications contain trade secrets of Oracle and Oracle's licensors and Customer shall not attempt, cause, or permit the alteration, decompilation, reverse engineering, disassembly or other reduction of the VAR Applications to a human perceivable form. Oracle reserves the right to replace, with functional equivalent software, any of the VAR Applications in future releases of the applicable program.

Contents

Send Us Your Comments	ix
Preface	xi
Audience	xi
Documentation Accessibility	xi
Related Documents	xi
Improved Process for Oracle Retail Documentation Corrections	xii
Oracle Retail Documentation on the Oracle Technology Network	xii
Conventions	xii
1 Introduction	
Contents of this Guide	1-1
Business Process Flow	1-1
Key Features of MFP Cloud Service	1-2
Skills Needed for Implementation	1-3
Applications	1-3
Technical Concepts	1-3
2 Implementation Considerations	
Configuration Considerations	2-1
Data	2-2
Hierarchy Files	2-2
Calendar Hierarchy File	2-3
Product Hierarchy File	2-3
Location Hierarchy File	2-5
Custom Messages Hierarchy File	2-6
Data Files	2-6
Historical Data	2-12
Loading and Extracting Data	2-12
Integration	2-12
User Roles and Security	2-13
Internationalization	2-14
Batch Process and Scheduling	2-14

A Appendix: Exports

MFP Retail Cloud Service Exports	A-1
MFP Retail Cloud Service Merch Plan - Current Plan Export.....	A-1
MFP Retail Cloud Service Merch Plan - Original Plan Export.....	A-4
MFP Retail Cloud Service Merch Plan - Submitted Plan Export.....	A-7
MFP Retail Cloud Service Merch Plan - Working Plan Export.....	A-10
MFP Retail Cloud Service Merch Target - Target Plan Export.....	A-13
MFP Retail Cloud Service Merch Target - Working Plan Export.....	A-16
MFP Retail Cloud Service Location Plan - Current Plan Export.....	A-19
MFP Retail Cloud Service Location Plan - Original Plan Export.....	A-20
MFP Retail Cloud Service Location Plan - Working Plan Export.....	A-21
MFP Retail Cloud Service Location Target - Target Plan Export.....	A-22
MFP Retail Cloud Service Location Target - Working Plan Export.....	A-23
MFP Cost Cloud Service Exports	A-23
MFP Cost Cloud Service Merch Plan - Current Plan Export.....	A-23
MFP Cost Cloud Service Merch Plan - Original Plan Export.....	A-25
MFP Cost Cloud Service Merch Plan - Submitted Plan Export.....	A-27
MFP Cost Cloud Service Merch Plan - Working Plan Export.....	A-29
MFP Cost Cloud Service Merch Target - Target Plan Export.....	A-31
MFP Cost Cloud Service Merch Target - Working Plan Export.....	A-33
MFP Cost Cloud Service Location Plan - Current Plan Export.....	A-35
MFP Cost Cloud Service Location Plan - Original Plan Export.....	A-36
MFP Cost Cloud Service Location Plan - Working Plan Export.....	A-37
MFP Cost Cloud Service Location Target - Target Plan Export.....	A-38
MFP Cost Cloud Service Location Target - Working Plan Export.....	A-39
MFP Cloud Service Integration with RI	A-39
MFP Retail Cloud Service to RI - Original Plan.....	A-40
MFP Retail Cloud Service to RI - Current Plan.....	A-41
MFP Cost Cloud Service to RI - Original Plan.....	A-42
MFP Cost Cloud Service to RI - Current Plan.....	A-43

B Appendix: Files Needed by OCI for Domain Build/Patch

Configuration Files to Send.....	B-1
----------------------------------	-----

C Appendix: Generating the Configuration for Plug-in Options

Creating the Configuration Using Plug-ins.....	C-1
--	-----

D Appendix: Batch Process and Control Files

Batch Processes Under the Control of the Implementer.....	D-1
Batch Processes Not Under the Control of the Implementer.....	D-1
Batch Processes Catalog.....	D-2
Batch Load: batch_load_list.txt.....	D-2
Batch Calculations: batch_calc_list.txt.....	D-2
Export Measures: batch_export_list.txt.....	D-3
measure_format_list.txt.....	D-4
Batch Execution: batch_exec_list.txt.....	D-4

Batch Online Admin Tasks Pick List: batch_oat_plist.txt	D-5
Process to Change Batch Control Files	D-6

List of Tables

1-1	Business Process Workflow Components	1-2
2-1	MFP Retail Cloud Service Input Measure List	2-7
2-2	MFP Cost Cloud Service Input Measure List.....	2-10
2-3	User's Access Permission for MFP Workbooks.....	2-13
A-1	MFP Retail Cloud Service Merch Plan - Current Plan Export Measures.....	A-1
A-2	MFP Retail Cloud Service Merch Plan - Original Plan Export Measures.....	A-4
A-3	MFP Retail Cloud Service Merch Plan - Submitted Plan Export Measures	A-7
A-4	MFP Retail Cloud Service Merch Plan - Working Plan Export Measures	A-10
A-5	MFP Retail Cloud Service Merch Target - Target Plan Export Measures.....	A-13
A-6	MFP Retail Cloud Service Merch Target - Working Plan Export Measures	A-16
A-7	MFP Retail Cloud Service Location Plan - Current Plan Export Measures.....	A-19
A-8	MFP Retail Cloud Service Location Plan - Original Plan Export Measures.....	A-20
A-9	MFP Retail Cloud Service Location Plan - Working Plan Export Measures.....	A-21
A-10	MFP Retail Cloud Service Location Target - Target Plan Export Measures.....	A-22
A-11	MFP Retail Cloud Service Location Target - Working Plan Export Measures	A-23
A-12	MFP Cost Cloud Service Merch Plan - Current Plan Export Measures	A-24
A-13	MFP Cost Cloud Service Merch Plan - Original Plan Export Measures	A-26
A-14	MFP Cost Cloud Service Merch Plan - Submitted Plan Export Measures	A-28
A-15	MFP Cost Cloud Service Merch Plan - Working Plan Export Measures	A-30
A-16	MFP Cost Cloud Service Merch Target - Target Plan Export Measures.....	A-32
A-17	MFP Cost Cloud Service Merch Target - Working Plan Export Measures	A-34
A-18	MFP Cost Cloud Service Location Plan - Current Plan Export Measures.....	A-36
A-19	MFP Cost Cloud Service Location Plan - Original Plan Export Measures	A-36
A-20	MFP Cost Cloud Service Location Plan - Working Plan Export Measures	A-37
A-21	MFP Cost Cloud Service Location Target - Target Plan Export Measures.....	A-38
A-22	MFP Cost Cloud Service Location Target - Working Plan Export Measures	A-39
A-23	MFP Retail Cloud Service to RI - Original Plan Measures.....	A-40
A-24	MFP Retail Cloud Service to RI - Current Plan Measures	A-41
A-25	MFP Cost Cloud Service to RI - Original Plan Measures.....	A-42
A-26	MFP Cost Cloud Service to RI - Current Plan Measures.....	A-43

Send Us Your Comments

Oracle Retail Merchandise Financial Planning Cloud Service Implementation Guide,
Release 16.0.1

Oracle welcomes customers' comments and suggestions on the quality and usefulness of this document.

Your feedback is important, and helps us to best meet your needs as a user of our products. For example:

- Are the implementation steps correct and complete?
- Did you understand the context of the procedures?
- Did you find any errors in the information?
- Does the structure of the information help you with your tasks?
- Do you need different information or graphics? If so, where, and in what format?
- Are the examples correct? Do you need more examples?

If you find any errors or have any other suggestions for improvement, then please tell us your name, the name of the company who has licensed our products, the title and part number of the documentation and the chapter, section, and page number (if available).

Note: Before sending us your comments, you might like to check that you have the latest version of the document and if any concerns are already addressed. To do this, access the Online Documentation available on the Oracle Technology Network web site. It contains the most current Documentation Library plus all documents revised or released recently.

Send your comments to us using the electronic mail address: retail-doc_us@oracle.com

Please give your name, address, electronic mail address, and telephone number (optional).

If you need assistance with Oracle software, then please contact your support representative or Oracle Support Services.

If you require training or instruction in using Oracle software, then please contact your Oracle local office and inquire about our Oracle University offerings. A list of Oracle offices is available on our web site at <http://www.oracle.com>.

Preface

This document provides critical information about the processing and operating details of Oracle Retail Merchandise Financial Planning Cloud Service.

Audience

This document is for:

- Systems administration and operations personnel
- Systems analysts
- Integrators and implementers
- Business analysts who need information about Oracle Retail Merchandise Financial Planning Cloud Service processes and interfaces

Documentation Accessibility

For information about Oracle's commitment to accessibility, visit the Oracle Accessibility Program website at

<http://www.oracle.com/pls/topic/lookup?ctx=acc&id=docacc>.

Access to Oracle Support

Oracle customers that have purchased support have access to electronic support through My Oracle Support. For information, visit

<http://www.oracle.com/pls/topic/lookup?ctx=acc&id=info> or visit

<http://www.oracle.com/pls/topic/lookup?ctx=acc&id=trs> if you are hearing impaired.

Related Documents

For more information, see the following documents in the Oracle Retail Merchandise Financial Planning Cloud Service Release 16.0.1 documentation set:

- *Oracle Retail Merchandise Financial Planning Cloud Service Release Notes*
- *Oracle Retail Merchandise Financial Planning Cloud Service Starter Kit Guide*
- *Oracle Retail Merchandise Financial Planning Cost Cloud Service User Guide*
- *Oracle Retail Merchandise Financial Planning Retail Cloud Service User Guide*

Improved Process for Oracle Retail Documentation Corrections

To more quickly address critical corrections to Oracle Retail documentation content, Oracle Retail documentation may be republished whenever a critical correction is needed. For critical corrections, the republication of an Oracle Retail document may at times not be attached to a numbered software release; instead, the Oracle Retail document will simply be replaced on the Oracle Technology Network Web site, or, in the case of Data Models, or, in the case of Data Models, to the applicable My Oracle Support Documentation container where they reside.

Oracle Retail documentation is available on the Oracle Technology Network at the following URL:

<http://www.oracle.com/technetwork/documentation/oracle-retail-100266.html>

An updated version of the applicable Oracle Retail document is indicated by Oracle part number, as well as print date (month and year). An updated version uses the same part number, with a higher-numbered suffix. For example, part number E123456-02 is an updated version of a document with part number E123456-01.

If a more recent version of a document is available, that version supersedes all previous versions.

Oracle Retail Documentation on the Oracle Technology Network

Oracle Retail product documentation is available on the following web site:

<http://www.oracle.com/technetwork/documentation/oracle-retail-100266.html>

(Data Model documents are not available through Oracle Technology Network. You can obtain them through My Oracle Support.)

Conventions

The following text conventions are used in this document:

Convention	Meaning
boldface	Boldface type indicates graphical user interface elements associated with an action, or terms defined in text or the glossary.
<i>italic</i>	Italic type indicates book titles, emphasis, or placeholder variables for which you supply particular values.
monospace	Monospace type indicates commands within a paragraph, URLs, code in examples, text that appears on the screen, or text that you enter.

Introduction

Oracle Retail Merchandise Financial Planning (MFP) Cloud Service provides strategic and financial product planning functions. These functions support industry planning standards for pre-season and in-season processes. For a more detailed overview of the functionality within MFP Cloud Service, see the *Oracle Retail Merchandise Financial Planning Cost Cloud Service User Guide* and *Oracle Retail Merchandise Financial Planning Retail Cloud Service User Guide*.

Contents of this Guide

This implementation guide addresses the following topics:

- [Chapter 1, "Introduction"](#). Overview of the MFP Cloud Service business workflow and skills needed for implementation.
- [Chapter 2, "Implementation Considerations"](#). Explanation of the factors to take into consideration before performing the implementation.
- [Appendix A, "Appendix: Exports"](#): List of measures for the available exports.
- [Appendix B, "Appendix: Files Needed by OCI for Domain Build/Patch"](#): List of files needed by Oracle OCI for implementation.
- [Appendix C, "Appendix: Generating the Configuration for Plug-in Options"](#): Information on the generating the configuration for the plug-in options.
- [Appendix D, "Appendix: Batch Process and Control Files"](#): Description of the batch process and control files.

Business Process Flow

[Figure 1-1](#) shows a typical workflow for MFP Cloud Service.

Figure 1–1 Business Process Workflow

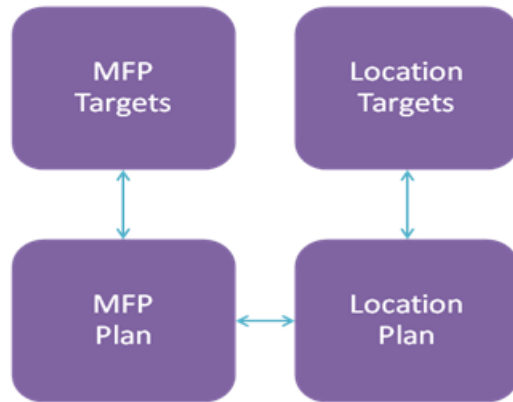


Table 1–1 describes the parts of the business process workflow in Figure 1–1.

Table 1–1 Business Process Workflow Components

Component	Description
MFP Targets	<ul style="list-style-type: none"> ▪ Planning Leader ▪ A combination of traditional Top Down and Middle Out Roles ▪ Plan Level is Department, Week, and Channel ▪ Plan Sales, Markdowns, and Inventory by Type plus Receipts
MFP Plan	<ul style="list-style-type: none"> ▪ Merch Planner ▪ Traditional Bottom Up Role ▪ Plan Level is Subclass, Week, and Channel ▪ Plan Sales, Markdowns, and Inventory by Type plus Receipts
Location Targets	<ul style="list-style-type: none"> ▪ Planning Leader or designate ▪ Create a version of LY Sales/Markdowns that is corrected for non-repeated events such as store closures due to bad weather, construction, and so on ▪ Plan Level is Company, Location, and Week ▪ Plan total sales, markdowns, and so on
Location Plan	<ul style="list-style-type: none"> ▪ Loc Planner ▪ Plan total sales, markdowns, and so on, through the use of average store metrics using a number of User Defined Hierarchies with Location attributes (comp, volume, size, climate, demographics, and so on) ▪ Plan level is Department, Location, and Week

Key Features of MFP Cloud Service

MFP Cloud Service provides the following features:

- Setting and passing targets
- Creating a financial plan in a structured method
- Plan reconciliation

- Plan approval
- Plan maintenance
- Replanning
- Plan monitoring

Skills Needed for Implementation

The implementer must have an understanding of the following applications and technical concepts.

Applications

The implementer must understand interface requirements of the integrated applications and data sources for the master data, demand, and inventory history. For full implementation, the implementer requires this knowledge for the following applications:

- Oracle Retail Predictive Application Server (RPAS)
- Oracle Retail Merchandise Financial Planning (MFP)
- Oracle Retail Merchandising System (RMS) or other merchandising system

Technical Concepts

The implementer must understand the following technical concepts:

- UNIX system administration, shell scripts, and job scheduling
- Performance constraints based on the retailer's infrastructure
- Retailer's hierarchical (SKU/store/day) data
- MFP batch processes
- Understanding of how RPAS rule language works
- Understanding of measures and dimension constructs

Implementation Considerations

The following information must be considered before configuring MFP Cloud Service:

- [Configuration Considerations](#)
- [Data](#)
- [Integration](#)
- [User Roles and Security](#)
- [Internationalization](#)
- [Batch Process and Scheduling](#)

Configuration Considerations

MFP Retail Cloud Service and MFP Cost Cloud Service both provide the following configuration options for a retailer to implement. Each can be chosen with or without the Whole Sale Franchise option and Local Currency option using automation plug-ins.

For more information about generating configurations for the plug-in options using the Configuration Tools, see [Appendix C, "Appendix: Generating the Configuration for Plug-in Options"](#).

Whole Sale Franchise Option

Retailers having whole sale franchise capabilities and wanting to plan specific metrics to support those functions can choose the Whole Sale Franchise option. Selecting a provision with this option provides additional tasks in the task flow, worksheets, and measures to support this process. For more information about these tasks, see the *Oracle Retail Merchandise Financial Planning Cost Cloud Service User Guide* or *Oracle Retail Merchandise Financial Planning Retail Cloud Service User Guide*. If a provision containing this option is chosen, the retailer must also provide additional data files to support this process. For more details, see "[Data Files](#)".

Local Currency Option

Retailers who want to plan in both primary currency as well as local currency can chose provisions containing this option. Selecting provisions with this option provides additional tasks, worksheets, and measures to support this process. The retailer must set up the Local Currency conversion details in the administration workbooks specific to this option. For more information details, see the *Oracle Retail Merchandise Financial Planning Cost Cloud Service User Guide* or *Oracle Retail Merchandise Financial Planning Retail Cloud Service User Guide*.

Data Load Dimension Option

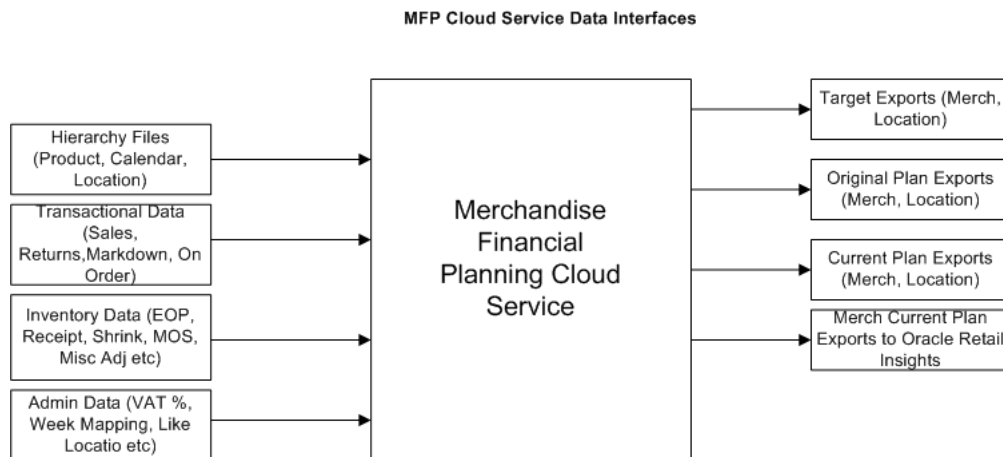
MFP Cloud Service plans are created only at the Sub-Class level as the lowest level, so the all actual data load process is defined to load data only at the Sub-Class level by default. In order to support customers who want to load data at the Style-Color level, the product hierarchy file contains Style-Color (skup) as the lowest hierarchy position. During implementation, using this plug-in option, the user can change the load intersection of all actual measures (drty* measures) from Sub-Class to Style/Color. It only changes the load intersection of the measures, aggregates the data during the data load process to Sub-Class, and holds the data within the domain only at the Sub-Class level.

Data

MFP Retail and Cost Cloud Service both need following sets of data from customers, which are broadly classified as hierarchy files and data files. The data is described in the following sections:

- [Hierarchy Files](#)
- [Data Files](#)

Figure 2–1 MFP Cloud Service Data Interfaces



Hierarchy Files

This is the foundation data to build any RPAS solution. MFP Cloud Service requires the standard three hierarchy files, Calendar, Product, and Location.

Note: In all the hierarchy files, the hierarchy type User Defined Alternates (UDA) and data for those alternates do not need to be present in the hierarchy files. Administration users can directly set values for those alternates directly in the application. For more information, see the *Oracle Retail Predictive Application Server Administration Guide for the Fusion Client*. If a retailer also provides these details in the hierarchy files, data for all user alternates for that hierarchy must be present in that file with header information.

Note: If hierarchy files contain header information, then columns can be in any order but the file name must be in the format <hier>.hdr.csv.dat. If the hierarchy files does not contain hierarchy header, the hierarchy data must be in same order as specified in the tables in the following sections without UDA dimensions. The file must be named <hier>.csv.dat.

For information on the hierarchy files, see the following sections:

- [Calendar Hierarchy File](#)
- [Product Hierarchy File](#)
- [Location Hierarchy File](#)
- [Custom Messages Hierarchy File](#)

Calendar Hierarchy File

File name: clnd.hdr.csv.dat

File format: comma-separated values file

The following table describes the fields in this file.

Name	Label	Hierarchy Type	Parent
DAY	Day	Main	None
WEEK	Week	Main	DAY
MNTH	Month	Main	WEEK
QRTR	Quarter	Main	MNTH
HALF	Half	Main	QRTR
YEAR	Year	Main	HALF
HLDY	Holiday	UDA	WEEK
EVNT	Event	UDA	WEEK
WOYR	Week of Year	Alternate	WEEK
STDB	STD/BTA	UDA	WEEK

Example:

```
day,day_label,week,week_label,mnth,mnth_label,qrtr,qrtr_label,half,half_label,year,year_label,hldy,hldy_label,evnt,evnt_label,woyr,woyr_label,stdb,stdb_label
20170129,1/29/2017,w01_2017,2/4/2017,m01_2017,Feb FY2017,q01_2017,Quarter1 FY2017,h1_2017,Half1 FY2017,a2017,FY2017,0,None,0,None,1,Week 01,0,0
20170130,1/30/2017,w01_2017,2/4/2017,m01_2017,Feb FY2017,q01_2017,Quarter1 FY2017,h1_2017,Half1 FY2017,a2017,FY2017,0,None,0,None,1,Week 01,0,0
20170131,1/31/2017,w01_2017,2/4/2017,m01_2017,Feb FY2017,q01_2017,Quarter1 FY2017,h1_2017,Half1 FY2017,a2017,FY2017,0,None,0,None,1,Week 01,0,0
20170201,2/1/2017,w01_2017,2/4/2017,m01_2017,Feb FY2017,q01_2017,Quarter1 FY2017,h1_2017,Half1 FY2017,a2017,FY2017,0,None,0,None,1,Week 01,0,0
```

Product Hierarchy File

File name: prod.hdr.csv.dat

File format: comma-separated values file

The following table describes the fields in this file.

Name	Label	Hierarchy Type	Parent
SKUP	Style/Color	Main	None
SCLS	Subclass	Main	SKUP
CLSS	Class	Main	SCLS
DEPT	Department	Main	CLSS
PGRP	Group	Main	DEPT
DVSN	Division	Main	PGRP
CMPP	Company	Main	DVSN
SCL1	Subclass Group 1	UDA	SCLS
SCL2	Subclass Group 2	UDA	SCLS
DPTG	Dept Group	Alternate	DEPT
CLSG	Class Group	UDA	CLSS
CONS	Consignment/Non-Cons	UDA	SCLS

Example:

```
SKUP, SKUP_LABEL, SCLS, SCLS_LABEL, SCL1, SCL1_LABEL, SCL2, SCL2_LABEL, CLSS, CLSS_LABEL, CLSG, CLSG_LABEL, DEPT, DEPT_LABEL, DPTG, DPTG_LABEL, PGRP, PGRP_LABEL, DVSN, DVSN_LABEL, CMPP, CMPP_LABEL, CONS, CONS_LABEL
"22222222", "22222222 Ground De-Caffeinated Can", "100000", "100000
Ground", "110000", "110000 Brewed", "120000", "120000 Bag-Jar-Can", "10000", "10000
Coffee", "11001", "11001 Coffee", "1000", "1000 Shelf Stable Beverages", "1", "1 Dry
Grocery", "100", "100 Shelf Stable Grocery", "10", "10 Grocery", "1", "1
Acme", "1", "Consignment"
"44444444", "44444444 Ground Regular - Caffeinated Can", "100000", "100000
Ground", "110000", "110000 Brewed", "120000", "120000 Bag-Jar-Can", "10000", "10000
Coffee", "11001", "11001 Coffee", "1000", "1000 Shelf Stable Beverages", "1", "1 Dry
Grocery", "100", "100 Shelf Stable Grocery", "10", "10 Grocery", "1", "1
Acme", "1", "Consignment"
"11111111", "11111111 Ground De-Caffeinated Bag", "100000", "100000
Ground", "110000", "110000 Brewed", "120000", "120000 Bag-Jar-Can", "10000", "10000
Coffee", "11001", "11001 Coffee", "1000", "1000 Shelf Stable Beverages", "1", "1 Dry
Grocery", "100", "100 Shelf Stable Grocery", "10", "10 Grocery", "1", "1
Acme", "1", "Consignment"
"33333333", "33333333 Ground Regular - Caffeinated Bag", "100000", "100000
Ground", "110000", "110000 Brewed", "120000", "120000 Bag-Jar-Can", "10000", "10000
Coffee", "11001", "11001 Coffee", "1000", "1000 Shelf Stable Beverages", "1", "1 Dry
Grocery", "100", "100 Shelf Stable Grocery", "10", "10 Grocery", "1", "1
Acme", "1", "Consignment"
```

Note:

In MFP Cloud Service, the lowest level of planning is done at the Subclass level. It also needs aggregated actual data only at the subclass level. Base MFP configuration is defined to load actual data only at the Subclass level, but the lowest hierarchy level is still defined at the Style/Color level.

Note:

MFP Cloud Service domains are always partitioned based on the dimension Department Group (dptg). This dimension is provided specifically to simplify the partition process and control the same through the hierarchy file load process. For each unique department group, one partition will be created. During implementation, the customer can maintain the Department Group provided in the hierarchy file to control the number of partitions and in which local domain a department can be present.

During implementation, the following options are available:

- If a retailer has all the actual data readily available at the Style/Color level and wants to do aggregation to the subclass level within MFP, the retailer can load style/color in the hierarchy. It involves changing the labeled intersection #Act_Load_Int# in the configuration to load actual at the Style/Color level. This can be done as part of plug-in options. This increases the domain size considerably in a Cloud environment and also increases the batch processing time.
- If domain size is a constraint and the retailer can provide pre-aggregated data at the Subclass level, no change is needed to the configuration. The retailer can ignore loading the style/color in the hierarchy file by loading the same subclass data in place of style/color.

If the hierarchy and data load are both at the Style/Color level, during item reclassifications at the Style/Color level, reloading the hierarchy with correct classifications and running the weekly batch calculations moves the correct historical data into the application. However, if the data load is only at the Subclass level, then during reclassifications at item level, the historical data must be loaded again.

Location Hierarchy File

File name: loc.hdr.csv.dat

File format: comma-separated values file

The following table describes the fields in this file.

Name	Label	Hierarchy Type	Parent
STOR	Location	Main	None
DSTR	District	Main	STOR
REGN	Region	Main	DSTR
CHNL	Channel	Main	REGN
CHAN	Chain	Main	CHNL
COMP	Company	Main	CHAN
CURR	Currency	UDA	CHNL
CHNG	Chain Group	UDA	CHAN
RGNG	Region Group	UDA	REGN
DSTG	District Group	UDA	DSTR
SCST	Store Comp Status	UDA	STOR
CLMT	Climate	UDA	STOR
SPCE	Space	UDA	STOR
LOCT	Location Type	UDA	STOR
FFLT	Fulfillment Type	UDA	STOR

Name	Label	Hierarchy Type	Parent
INCM	Income	UDA	STOR
STRV	Total Store Volume	UDA	STOR
STP1	Location Alternate 1	UDA	STOR
STP2	Location Alternate 2	UDA	STOR

Example:

STOR, STOR_LABEL, DSTR, DSTR_LABEL, REGN, REGN_LABEL, CHNL, CHNL_LABEL, CHAN, CHAN_LABEL, COMP, COMP_LABEL, CURR, CURR_LABEL, CHNG, CHNG_LABEL, RGNG, RGNG_LABEL, DSTG, DSTG_LABEL, SCST, SCST_LABEL, CLMT, CLMT_LABEL, SPCE, SPCE_LABEL, LOCT, LOCT_LABEL, FFLT, FFLT_LABEL, INCM, INCM_LABEL, STRV, STRV_LABEL
1000,1000 Charlotte,1070,North Carolina,170,Mid-Atlantic,1,Brick & Mortar,1,US,1,Retailer Ltd,840,USD,1,North America,1,North,170,Mid-Atlantic,3,Comp,6,Mixed Humid,1,Very Large,1,Store,1,Store Pick Up / Take With,1,Ultra,1,A
1001,1001 Atlanta,1023,Georgia,400,South Atlantic,1,Brick & Mortar,1,US,1,Retailer Ltd,840,USD,1,North America,2,South,400,South Atlantic,3,Comp,7,Hot Humid,3,Medium,2,Kiosk,2,Deliver/Install at Customer ,2,High,6,F
1002,1002 Dallas,1104,Texas,230,Gulf States,1,Brick & Mortar,1,US,1,Retailer Ltd,840,USD,1,North America,2,South,230,Gulf States,3,Comp,4,Hot Dry,3,Medium,1,Store,3,Home Delivery,3,Middle,6,F
1003,1003 Boston,1051,Massachusetts,200,New England,1,Brick & Mortar,1,US,1,Retailer Ltd,840,USD,1,North America,1,North,200,New England,4,New,2,Cold,2,Large,1,Store,4,Fulfill DC Mail to Customer,4,Upper Middle,4,D
1004,1004 New York,1066,New York,200,New England,1,Brick & Mortar,1,US,1,Retailer Ltd,840,USD,1,North America,1,North,200,New England,3,Comp,2,Cold,3,Medium,1,Store,5,Store Mail to Customer,5,Lower Middle,5,E

Custom Messages Hierarchy File

MFP Cloud Service also has an additional internal hierarchy for custom messages used in the application called Custom Messages Hierarchy (CMSH). Custom messages used in the application are pre-configured in that hierarchy file and, unless a retailer needs different custom messages, that file does not need to be changed.

File name: cmsh.hdr.csv.dat

File format: comma-separated values file

The following table describes the fields in this file.

Name	Label	Hierarchy Type	Parent
CMSD	Messages	Main	None

Example:

"CMS01","Seeding completed successfully!"

"CMS02","Seeding not successful. Please select Wp Seed Source."

Data Files

The following tables describe the data files (measures) needed, base intersection, data type, measure type, required/option, and expected data source details. In the Data Source column, DW means any Data Warehouse or equivalent system, RMS means

Oracle Retail Merchandising System or its equivalent, and Internal means either any retailer internal system or administration user.

Note: The selected value for each file in the Required/Optional column in the following tables is specific to the Provision option chosen. If the Wholesale Franchise Provision option is chosen for implementation, all wholesale franchise specific measures are required.

Note: The load intersection of all drty* measures can be changed to skup instead of scls through the plug-in option during implementation. It only changes the data load intersection. The base intersection of the measures will remain the same at scls. Data will be aggregated during the data load process.

To simplify the integration, all measure files are configured to be loaded as one measure per file. Each measure's data must be present in a separate file and the file name must be the same as measure name with the extension .csv.ovr. All files must be in csv format.

Example:

Measure: drtysls1r

Base Intersection: week/scls/stor

Data Type: real

File Name: drtysls1r.csv.ovr

w01_2016,100000,1000,610.62
w02_2016,100000,1000,1938.61
w03_2016,100000,1000,1903.9
w04_2016,100000,1000,1291.73

Table 2-1 MFP Retail Cloud Service Input Measure List

Measure Name	Measure Label	Base Intersection	Data Type	Measure Type	Required or Optional?	Data Source
drtysls1r	Ty Sales Reg+Promo R	week/scls/stor	real	Actual	required	DW
drtysls1u	Ty Sales Reg+Promo U	week/scls/stor	real	Actual	required	DW
drtysls2r	Ty Sales Clr R	week/scls/stor	real	Actual	required	DW
drtysls2u	Ty Sales Clr U	week/scls/stor	real	Actual	required	DW
drtyrtn1r	Ty Returns Reg+Promo R	week/scls/stor	real	Actual	required	DW
drtyrtn1u	Ty Returns Reg+Promo U	week/scls/stor	real	Actual	required	DW
drtyrtn2r	Ty Returns Clr R	week/scls/stor	real	Actual	required	DW
drtyrtn2u	Ty Returns Clr U	week/scls/stor	real	Actual	required	DW
drtymkd1r	Ty Markdown Reg+Promo R	week/scls/stor	real	Actual	required	DW

Table 2–1 (Cont.) MFP Retail Cloud Service Input Measure List

Measure Name	Measure Label	Base Intersection	Data Type	Measure Type	Required or Optional?	Data Source
drtymkd2r	Ty Markdown Clr R	week/scls/stor	real	Actual	required	DW
drtymkdwfr	Ty Markdown due to W/F R	week/scls/stor	real	Actual	required/optional	DW
drtyeop1c	Ty EOP Reg+Promo C	week/scls/stor	real	Actual	required	DW
drtyeop1r	Ty EOP Reg+Promo R	week/scls/stor	real	Actual	required	DW
drtyeop1u	Ty EOP Reg+Promo U	week/scls/stor	real	Actual	required	DW
drtyeop2c	Ty EOP Clr C	week/scls/stor	real	Actual	required	DW
drtyeop2r	Ty EOP Clr R	week/scls/stor	real	Actual	required	DW
drtyeop2u	Ty EOP Clr U	week/scls/stor	real	Actual	required	DW
drtyrcptc	Ty Receipts C	week/scls/stor	real	Actual	required	DW
drtyrcptr	Ty Receipts R	week/scls/stor	real	Actual	required	DW
drtyrcptu	Ty Receipts U	week/scls/stor	real	Actual	required	DW
drtyshrkc	Ty Shrink C	week/scls/stor	real	Actual	required	DW
drtyshrkr	Ty Shrink R	week/scls/stor	real	Actual	required	DW
drtyshrku	Ty Shrink U	week/scls/stor	real	Actual	required	DW
drtymosc	Ty MOS C	week/scls/stor	real	Actual	required	DW
drtymosr	Ty MOS R	week/scls/stor	real	Actual	required	DW
drtymosu	Ty MOS U	week/scls/stor	real	Actual	required	DW
drtymiscadjr	Ty Misc Adj R	week/scls/stor	real	Actual	required	DW
drtymiscadju	Ty Misc Adj U	week/scls/stor	real	Actual	required	DW
drtyroyalr	Ty Royalties R	week/scls/stor	real	Actual	required	DW
drtyvndfndr	Ty Vendor Funds R	week/scls/stor	real	Actual	required	DW
drtywfmkdr	Ty W/F Markdown R	week/scls/stor	real	Actual	required/optional	DW
drtywfmkur	Ty W/F Markup R	week/scls/stor	real	Actual	required/optional	DW
drtyconsinvr	Ty Cons Inv R	week/scls/stor	real	Actual	optional	DW
drtytrafficu	Ty Traffic Count U	week/scls/stor	real	Transactional	optional	RMS
drtytransactu	Ty Transaction Count U	week/scls/stor	real	Transactional	optional	RMS
drtyoou	Ty On Order U	week/scls/stor	real	Transactional	required	RMS
drtyoor	Ty On Order R	week/scls/stor	real	Transactional	required	RMS
drtyooc	Ty On Order C	week/scls/stor	real	Transactional	required	RMS
addvvatvp	VAT %	week/scls/chnl	real	Admin	required	Internal

Table 2–1 (Cont.) MFP Retail Cloud Service Input Measure List

Measure Name	Measure Label	Base Intersection	Data Type	Measure Type	Required or Optional?	Data Source
addvwfpoCb	W/F PoC	stor	Boolean	Admin	required/optional	Internal
addvcratex	Local Currency Rate	week/chnl	real	Admin	required/optional	Internal
addvcratet	Local Currency Symbol	chnl	text	Admin	required/optional	Internal
addvpocdesct	PoC Description	stor	text	Admin	required	Internal
addvpocstatt	PoC Status	stor	text	Admin	required	Internal
addvpocsqmv	Square Meter	dept/stor	real	Admin	required	Internal
addvlikepod	Like PoC End Date	stor	date	Admin	required	Internal
addvlikepoc	Like PoC	stor	text	Admin	required	Internal
addvlagl2t	Lag Lly	week	text	Admin	required	Internal
addvlaglyt	Lag Ly	week	text	Admin	required	Internal
addvchnlmapt	Channel Type	chnl	text	Admin	required	Internal
drtybopisvp	Ty Buy Online Pick-Up in Store %	week/scls	text	Admin	optional	Internal
drtyborisvp	Ty BORIS %	week/scls	text	Admin	optional	Internal
drtyborovp	Ty BORO %	week/scls	text	Admin	optional	Internal
drtyincngstku	Ty Store to Warehouse Restocking \$/ U	week/scls	text	Admin	optional	Internal
drtyonstku	Ty Warehouse Restocking \$/ U	week/scls	text	Admin	optional	Internal
drtystrstku	Ty Store Restocking \$/ U	week/scls	text	Admin	optional	Internal
drtymtdvp	Ty Return Back to Online %	week/scls	text	Admin	optional	Internal
drtymtd1u	Ty Return Back to Online (Reg+Promo) U	week/scls/stor	real	Actual	optional	DW
drtymtd1r	Ty Return Back to Online (Reg+Promo) R	week/scls/stor	real	Actual	optional	DW
drtymtd2u	Ty Return Back to Online (Clr) U	week/scls/stor	real	Actual	optional	DW
drtymtd2r	Ty Return Back to Online (Clr) R	week/scls/stor	real	Actual	optional	DW
drtyims1u	Ty Pick up in Store (Reg+Promo) U	week/scls/stor	real	Actual	optional	DW

Table 2–1 (Cont.) MFP Retail Cloud Service Input Measure List

Measure Name	Measure Label	Base Intersection	Data Type	Measure Type	Required or Optional?	Data Source
drtyims1r	Ty Pick up in Store (Reg+Promo) R	week/scls/stor	real	Actual	optional	DW
drtyims2u	Ty Pick up in Store (Clr) U	week/scls/stor	real	Actual	optional	DW
drtyims2r	Ty Pick up in Store (Clr) R	week/scls/stor	real	Actual	optional	DW
drtystc1u	Ty Ship to Customer (Reg+Promo) U	week/scls/stor	real	Actual	optional	DW
drtystc1r	Ty Ship to Customer (Reg+Promo) R	week/scls/stor	real	Actual	optional	DW
drtystc2u	Ty Ship to Customer (Clr) U	week/scls/stor	real	Actual	optional	DW
drtystc2r	Ty Ship to Customer (Clr) R	week/scls/stor	real	Actual	optional	DW
drtybos1u	Ty BOS Reg+Promo U	scls/stor	real	Actual	optional	DW
drtybos2u	Ty BOS Clr U	scls/stor	real	Actual	optional	DW
drtybos1c	Ty BOS Reg+Promo C	scls/stor	real	Actual	optional	DW
drtybos2c	Ty BOS Clr C	scls/stor	real	Actual	optional	DW
drtybos1r	Ty BOS Reg+Promo R	scls/stor	real	Actual	optional	DW
drtybos2r	Ty BOS Clr R	scls/stor	real	Actual	optional	DW

Table 2–2 MFP Cost Cloud Service Input Measure List

Measure Name	Measure Label	Base Intersection	Data Type	Measure Type	Required or Optional?	Data Source
drtysls1r	Ty Sales Reg+Promo R	week/scls/stor	real	Actual	required	DW
drtysls1u	Ty Sales Reg+Promo U	week/scls/stor	real	Actual	required	DW
drtysls2r	Ty Sales Clr R	week/scls/stor	real	Actual	required	DW
drtysls2u	Ty Sales Clr U	week/scls/stor	real	Actual	required	DW
drtyrtn1r	Ty Returns Reg+Promo R	week/scls/stor	real	Actual	required	DW
drtyrtn1u	Ty Returns Reg+Promo U	week/scls/stor	real	Actual	required	DW
drtyrtn2r	Ty Returns Clr R	week/scls/stor	real	Actual	required	DW

Table 2–2 (Cont.) MFP Cost Cloud Service Input Measure List

Measure Name	Measure Label	Base Intersection	Data Type	Measure Type	Required or Optional?	Data Source
drtyrtn2u	Ty Returns Clr U	week/scls/stor	real	Actual	required	DW
drtyynsls1c	Ty Net Sales Reg+Promo C	week/scls/stor	real	Actual	required	DW
drtyynsls2c	Ty Net Sales Clr C	week/scls/stor	real	Actual	required	DW
drtymkd1r	Ty Markdown Reg+Promo R	week/scls/stor	real	Actual	required/optional	DW
drtymkd2r	Ty Markdown Clr R	week/scls/stor	real	Actual	required	DW
drtymkdwfr	Ty Markdown due to W/F R	week/scls/stor	real	Actual	required	DW
drtyeop1c	Ty EOP Reg+Promo C	week/scls/stor	real	Actual	required	DW
drtyeop1r	Ty EOP Reg+Promo R	week/scls/stor	real	Actual	required	DW
drtyeop1u	Ty EOP Reg+Promo U	week/scls/stor	real	Actual	required	DW
drtyeop2c	Ty EOP Clr C	week/scls/stor	real	Actual	required	DW
drtyeop2r	Ty EOP Clr R	week/scls/stor	real	Actual	required	DW
drtyeop2u	Ty EOP Clr U	week/scls/stor	real	Actual	required	DW
drtyrcptc	Ty Receipts C	week/scls/stor	real	Actual	required	DW
drtyrcptr	Ty Receipts R	week/scls/stor	real	Actual	required	DW
drtyrcptu	Ty Receipts U	week/scls/stor	real	Actual	required	DW
drtyshrkc	Ty Shrink C	week/scls/stor	real	Actual	required	DW
drtyshrku	Ty Shrink U	week/scls/stor	real	Actual	required	DW
drtymosc	Ty MOS C	week/scls/stor	real	Actual	required	DW
drtymosu	Ty MOS U	week/scls/stor	real	Actual	required	DW
drtymiscadjc	Ty Misc Adj C	week/scls/stor	real	Actual	required	DW
drtymiscadju	Ty Misc Adj U	week/scls/stor	real	Actual	required	DW
drtyroyalr	Ty Royalties R	week/scls/stor	real	Actual	required	DW
drtyvndfndr	Ty Vendor Funds R	week/scls/stor	real	Actual	required	DW
drtywfmkdr	Ty W/F Markdown R	week/scls/stor	real	Actual	required/optional	DW
drtywfmkur	Ty W/F Markup R	week/scls/stor	real	Actual	required/optional	DW
drtyconsinvc	Ty Cons Inv C	week/scls/stor	real	Actual	optional	DW
drtytrafficu	Ty Traffic Count U	week/scls/stor	real	Transactional	optional	RMS
drtytransactu	Ty Transaction Count U	week/scls/stor	real	Transactional	optional	RMS

Table 2–2 (Cont.) MFP Cost Cloud Service Input Measure List

Measure Name	Measure Label	Base Intersection	Data Type	Measure Type	Required or Optional?	Data Source
drtyoou	Ty On Order U	week/scls/stor	real	Transactional	required	RMS
drtyooc	Ty On Order C	week/scls/stor	real	Transactional	required	RMS
addvvatvp	VAT %	week/scls/chnl	real	Admin	required	Internal
addvwfpoeb	W/F PoC	stor	Boolean	Admin	required/optional	Internal
addvlcratex	Local Currency Rate	week/chnl	real	Admin	required/optional	Internal
addvlcratet	Local Currency Symbol	chnl	text	Admin	required/optional	Internal
addvpocdesct	PoC Description	stor	text	Admin	required	Internal
addvpocstatt	PoC Status	stor	text	Admin	required	Internal
addvpocsqmv	Square Meter	dept/stor	real	Admin	required	Internal
addvlikepocd	Like PoC End Date	stor	date	Admin	required	Internal
addvlikepoc	Like PoC	stor	text	Admin	required	Internal
addvlagl2t	Lag Lly	week	text	Admin	required	Internal
addvlaglyt	Lag Ly	week	text	Admin	required	Internal
drtybos1u	Ty BOS Reg+Promo U	scls/stor	real	Actual	optional	DW
drtybos2u	Ty BOS Clr U	scls/stor	real	Actual	optional	DW
drtybos1c	Ty BOS Reg+Promo C	scls/stor	real	Actual	optional	DW
drtybos2c	Ty BOS Clr C	scls/stor	real	Actual	optional	DW

Historical Data

It is recommended that you have at least two years of historical sales and inventory data for creating MFP targets. Less data can be used, but the more data that is available, the more statistical significance can be given to the MFP targets.

It is also important to have two years of history to produce an optimal forecast. Both MFP Cost and Retail Cloud Service use the embedded forecast.

Loading and Extracting Data

Data is loaded into MFP Cloud Service using the Online Administration Tools, which in turn use standard RPAS utilities. For more information on loading and extracting data using Online Administration Tools, see the *Oracle Retail Merchandise Financial Planning Cloud Service Administration Guide*.

Integration

MFP Cloud Service only supports the flat file integration of hierarchy and data files from source systems. There are no in-built interfaces to integrate with source systems such as RMS or Data Warehouse systems to extract hierarchy and actual data. Retailers must extract and provide the hierarchy files and data files from their respective source

systems as flat files in the required format and upload them to the Oracle Cloud SFTP server. The automated process send those files over to the RPAS DB Server and from there the files can be accessed by batch process triggered using the Online Administration Tools. In the same way, exported files in CSV format from the solution are pushed back to the Oracle Cloud SFTP server and from there retailers can download the extracted files. The retailer must integrate it with any other system that requires extracted plan data from MFP Cloud Service.

Integration with Oracle Retail Insights is enabled through Online Admin Tool tasks to export plan data to RI. For information on the integration and file format, see [Appendix A](#). For more information on the tasks, see the *Oracle Retail Merchandise Financial Planning Cloud Service Administration Guide*.

User Roles and Security

To define workbook template security, the system administrator grants individual users, or user groups, access to specific workbook templates. Granting access to workbook templates provides users with the ability to create, modify, save, and commit workbooks for the assigned workbook templates. Users are typically assigned to groups based on their user application (or solution) role. Users in the same group can be given access to workbook templates that belong to that group alone. Users can be assigned to more than one group and granted workbook template access without belonging to the user group that typically uses a specific workbook template. Workbook access is either denied, read-only, or full access. Read-only access allows a user to create a workbook for the template, but the user is not able to edit any values or commit the workbook. The read-only workbook can be refreshed.

When users save a workbook, they assign one of three access permissions to the workbook:

- World—Allow any user to open and edit the workbook.
- Group—Allow only those users in their same group to open and edit the workbooks.
- User—Allow no other users to open and edit the workbook.

Note: Users must have access to workbooks based on their role. The administrator must always follow the principal of least privilege; that is, each user must only be granted access to the product areas for which the user is responsible.

The following table provides guidance regarding which MFP users must have access to each of the workbooks.

Table 2–3 User’s Access Permission for MFP Workbooks

Workbook	User Roles
MFP Admin	Merchandise Financial Planner
Merch Plan Targets	Merchandise Financial Planning Manager/Executive
Merch Plan	Merchandise Financial Planner
Location Plan Targets	Merchandise Financial Planning Manager/Executive
Location Plan	Merchandise Financial Planner

For more information on security, see the *Oracle Retail Predictive Application Server Administration Guide for the Fusion Client*. For more information on data security in a cloud environment, see the Hosting Policy documents for the cloud solution.

Internationalization

Internationalization is the process of creating software that can be translated more easily. Changes to the code are not specific to any particular market.

Oracle Retail applications have been internationalized to support multiple languages.

The RPAS platform supports associated solution extensions and solution templates.

- A solution extension includes a collection of code and generally available configurations. Typically, solution extensions are implemented by a retailer with minimal configuration.
- A solution template does not include code. A solution template is most typically implemented as a retailer configuration.

Oracle Retail releases the translations of the RPAS server and client, as well as strings from the solution extensions.

Translations of the solution templates are not released. Since the labels for measures, hierarchies, dimensions, and workbook templates are typically changed by the retailer at implementation time, languages for the templates are not released. All templates have the ability to support multi-byte characters.

For more information on internationalization, see the *Oracle Retail Predictive Application Server Administration Guide for the Fusion Client*.

Translations are available for MFP Cloud Service for the following languages:

- Dutch
- French
- German
- Italian
- Japanese
- Portuguese
- Spanish

Batch Process and Scheduling

Batch scripts are lists of commands or jobs executed without human intervention. A batch window is the time frame in which the batch process must run. It is the upper limit on how long the batch can take. Batch scripts are used for importing and exporting data and for generating targets. The retailer must decide the best time for running batch scripts within the available batch window.

How often to upload updated sales and inventory data and how often to re-create targets must be determined.

- The retailer must consider at what interval to load the latest sales and inventory data. A weekly load of transactional type data is supported, since the base intersection is at week. It is recommended that the information transactional system, such as RMS, be loaded daily.

- Product availability and seasonal changes can be reasons for recalculating the targets. This can also be triggered by the addition of new products and availability of substantial new sales and inventory history.

The recommended batch schedule for MFP Cloud Service is to load historical and actual data on a weekly basis. All hierarchy changes can be loaded on a weekly or monthly basis.

In MFP Cloud Service, batch tasks can be controlled by a system administrator by using the Online Administration Tools. The tools are a predefined set of online administration tasks that are pre-configured for MFP Cloud Service. Those tasks, in turn, call the required batch scripts with preset parameters to perform the required tasks. For more information on the Online Administration Tool tasks, see the *Oracle Retail Merchandise Financial Planning Cloud Service Administration Guide*.

In MFP Cloud Service, the entire batch process is controlled using a set of batch control files. A predefined set of batch scripts reads those control files during the batch process. Though users cannot make any changes to underlying batch scripts, they can make some changes to batch control by uploading override control files. Those override control files are control files with the same name but with the extension *.ctl.

During upgrade or patches, any changes to base control files will be automatically updated, but user-provided override control files will not be touched. So during each upgrade/patch process, the retailer should maintain any changes to override control files that are uploaded by them.

For more details about the list of batch control files and batch process using them, see [Appendix D, "Appendix: Batch Process and Control Files"](#).

Appendix: Exports

The tables in this appendix list the measures for the MFP Cloud Service exports.

MFP Cloud Service provides exports of multiple versions of approved and working plan data for all major workbook templates Merch Target, Merch Plan, Location Target, and Location Plan. Exported approved plans (Current Plan and Original Plan) data can be used by a retailer to interface with any other applications for reporting purposes or as input to other systems that need MFP Plan data. All exported files are in CSV format.

For more information related to extracted measures, the approval process, and the administration process related to export, see the *Oracle Retail Merchandise Financial Planning Retail Cloud Service User Guide* and *Oracle Retail Merchandise Financial Planning Cost Cloud Service User Guide*.

MFP Retail Cloud Service Exports

This section lists the measures for the MFP Retail Cloud Service exports.

MFP Retail Cloud Service Merch Plan - Current Plan Export

Export Version Name: Merch Plan - Current Plan

Export Version: mpcp

Export Mask Measure: MP Cp Export

Exported File: export_mpcp.dat

Table A-1 MFP Retail Cloud Service Merch Plan - Current Plan Export Measures

Measure	Measure Label	Data Type	Aggregation Type
week	Week	NA	NA
scls	Subclass	NA	NA
chnl	Channel	NA	NA
MPCPBOP1R	Cp BOP Reg+Promo R	real	pst
MPCPBOP1U	Cp BOP Reg+Promo U	real	pst
MPCPBOP2R	Cp BOP Clr R	real	pst
MPCPBOP2U	Cp BOP Clr U	real	pst
MPCPBOPC	Cp BOP C	real	pst
MPCPBOPR	Cp BOP R	real	pst

Table A-1 (Cont.) MFP Retail Cloud Service Merch Plan - Current Plan Export Measures

Measure	Measure Label	Data Type	Aggregation Type
MPCPBOPU	Cp BOP U	real	pst
MPCPConsInvR	Cp Cons Inv R	real	total
MPCPEOP1R	Cp EOP Reg+Promo R	real	pet
MPCPEOP1U	Cp EOP Reg+Promo U	real	pet
MPCPEOP2R	Cp EOP Clr R	real	pet
MPCPEOP2U	Cp EOP Clr U	real	pet
MPCPEOPC	Cp EOP C	real	pet
MPCPEOPR	Cp EOP R	real	pet
MPCPEOPU	Cp EOP U	real	pet
MPCPGMR	Cp GM R	real	total
MPCPInvAdjR	Cp Inv Adj R	real	total
MPCPInvAdjU	Cp Inv Adj U	real	total
MPCPMiscAdjR	Cp Misc Adj R	real	total
MPCPMiscAdjU	Cp Misc Adj U	real	total
MPCPMkd1R	Cp Markdown Reg+Promo R	real	total
MPCPMkd2R	Cp Markdown Clr R	real	total
MPCPMkdR	Cp Markdown R	real	total
MPCPMkdWFR	Cp Markdown due to W/F R	real	total
MPCPMOCR	Cp Move to Clr R	real	total
MPCPMOCU	Cp Move to Clr U	real	total
MPCPMOSC	Cp MOS C	real	total
MPCPMOSR	Cp MOS R	real	total
MPCPMOSU	Cp MOS U	real	total
MPCPNGMR	Cp Net GM R	real	total
MPCPNSls1R	Cp Net Sales Reg+Promo R	real	total
MPCPNSls1U	Cp Net Sales Reg+Promo U	real	total
MPCPNSls2R	Cp Net Sales Clr R	real	total
MPCPNSls2U	Cp Net Sales Clr U	real	total
MPCPNSlsR	Cp Net Sales R	real	total
MPCPNSlsU	Cp Net Sales U	real	total
MPCPRcptC	Cp Receipts C	real	total
MPCPRcptR	Cp Receipts R	real	total
MPCPRcptU	Cp Receipts U	real	total
MPCPRoyalR	Cp Royalties R	real	total

Table A-1 (Cont.) MFP Retail Cloud Service Merch Plan - Current Plan Export Measures

Measure	Measure Label	Data Type	Aggregation Type
MPCPRtn1R	Cp Returns Reg+Promo R	real	total
MPCPRtn1U	Cp Returns Reg+Promo U	real	total
MPCPRtn2R	Cp Returns Clr R	real	total
MPCPRtn2U	Cp Returns Clr U	real	total
MPCPRtR	Cp Returns R	real	total
MPCPRtnU	Cp Returns U	real	total
MPCPShrkC	Cp Shrink C	real	total
MPCPShrkR	Cp Shrink R	real	total
MPCPShrkU	Cp Shrink U	real	total
MPCPSls1R	Cp Sales Reg+Promo R	real	total
MPCPSls1U	Cp Sales Reg+Promo	real	total
MPCPSls2R	Cp Sales Clr R	real	total
MPCPSls2U	Cp Sales Clr U	real	total
MPCPSlsCmpR	Cp Comp Sales R	real	total
MPCPSlsNCpR	Cp Non-Comp Sales R	real	total
MPCPSlsR	Cp Sales R	real	total
MPCPSlsU	Cp Sales U	real	total
MPCPVndFndR	Cp Vendor Funds R	real	total
MPCPWFMkDR	Cp W/F Markdown R	real	total
MPCPWFMkUR	Cp W/F Markup R	real	total
mcpimps1r	Cp Pick up in Store (Reg+Promo) R	real	total
mcpimps2r	Cp Pick up in Store (Clr) R	real	total
mcpimpsr	Cp Pick up in Store R	real	total
mcpimps1u	Cp Pick up in Store (Reg+Promo) U	real	total
mcpimps2u	Cp Pick up in Store (Clr) U	real	total
mcpimpsu	Cp Pick up in Store U	real	total
mcpmtd1r	Cp Return Back to Online (Reg+Promo) R	real	total
mcpmtd2r	Cp Return Back to Online (Clr) R	real	total
mcpmtdr	Cp Return Back to Online R	real	total
mcpmtd1u	Cp Return Back to Online (Reg+Promo) U	real	total
mcpmtd2u	Cp Return Back to Online (Clr) U	real	total

Table A-1 (Cont.) MFP Retail Cloud Service Merch Plan - Current Plan Export Measures

Measure	Measure Label	Data Type	Aggregation Type
mpcpmtdu	Cp Return Back to Online U	real	total
mpcpnrtn1r	Cp Net Return Reg+Promo R	real	total
mpcpnrtn2r	Cp Net Return Clr R	real	total
mpcpnrtnr	Cp Net Return R	real	total
mpcpnrtn1u	Cp Net Return Reg+Promo U	real	total
mpcpnrtn2u	Cp Net Return Clr U	real	total
mpcpnrtnu	Cp Net Return U	real	total
mpcpstc1r	Cp Ship to Customer (Reg+Promo) R	real	total
mpcpstc2r	Cp Ship to Customer (Clr) R	real	total
mpcpster	Cp Ship to Customer R	real	total
mpcpstc1u	Cp Ship to Customer (Reg+Promo) U	real	total
mpcpstc2u	Cp Ship to Customer (Clr) U	real	total
mpcpstcu	Cp Ship to Customer U	real	total

MFP Retail Cloud Service Merch Plan - Original Plan Export

Export Version Name: Merch Plan - Original Plan

Export Version: mpop

Export Mask Measure: MP Op Export

Exported File: export_mpop.dat

Table A-2 MFP Retail Cloud Service Merch Plan - Original Plan Export Measures

Measure	Measure Label	Data Type	Aggregation Type
week	Week	NA	NA
scls	Subclass	NA	NA
chnl	Channel	NA	NA
MPOPBOP1R	Op BOP Reg+Promo R	real	pst
MPOPBOP1U	Op BOP Reg+Promo U	real	pst
MPOPBOP2R	Op BOP Clr R	real	pst
MPOPBOP2U	Op BOP Clr U	real	pst
MPOPBOPC	Op BOP C	real	pst
MPOPBOPR	Op BOP R	real	pst
MPOPBOPU	Op BOP U	real	pst
MPOPConsInvR	Op Cons Inv R	real	total

Table A-2 (Cont.) MFP Retail Cloud Service Merch Plan - Original Plan Export Measures

Measure	Measure Label	Data Type	Aggregation Type
MPOPEOP1R	Op EOP Reg+Promo R	real	pet
MPOPEOP1U	Op EOP Reg+Promo U	real	pet
MPOPEOP2R	Op EOP Clr R	real	pet
MPOPEOP2U	Op EOP Clr U	real	pet
MPOPEOPC	Op EOP C	real	pet
MPOPEOPR	Op EOP R	real	pet
MPOPEOPU	Op EOP U	real	pet
MPOPGMR	Op GM R	real	total
MPOPInvAdjR	Op Inv Adj R	real	total
MPOPInvAdjU	Op Inv Adj U	real	total
MPOPMiscAdjR	Op Misc Adj R	real	total
MPOPMiscAdjU	Op Misc Adj U	real	total
MPOPMkd1R	Op Markdown Reg+Promo R	real	total
MPOPMkd2R	Op Markdown Clr R	real	total
MPOPMkdR	Op Markdown R	real	total
MPOPMkdWFR	Op Markdown due to W/F R	real	total
MPOPMOCR	Op Move to Clr R	real	total
MPOPMOCU	Op Move to Clr U	real	total
MPOPMOSC	Op MOS C	real	total
MPOPMOSR	Op MOS R	real	total
MPOPMOSU	Op MOS U	real	total
MPOPNGMR	Op Net GM R	real	total
MPOPNSIs1R	Op Net Sales Reg+Promo R	real	total
MPOPNSIs1U	Op Net Sales Reg+Promo U	real	total
MPOPNSIs2R	Op Net Sales Clr R	real	total
MPOPNSIs2U	Op Net Sales Clr U	real	total
MPOPNSIsR	Op Net Sales R	real	total
MPOPNSIsU	Op Net Sales U	real	total
MPOP RcptC	Op Receipts C	real	total
MPOP RcptR	Op Receipts R	real	total
MPOP RcptU	Op Receipts U	real	total
MPOP RoyalR	Op Royalties R	real	total
MPOP Rtn1R	Op Returns Reg+Promo R	real	total

Table A-2 (Cont.) MFP Retail Cloud Service Merch Plan - Original Plan Export Measures

Measure	Measure Label	Data Type	Aggregation Type
MPOPRtn1U	Op Returns Reg+Promo U	real	total
MPOPRtn2R	Op Returns Clr R	real	total
MPOPRtn2U	Op Returns Clr U	real	total
MPOPRtR	Op Returns R	real	total
MPOPRtnU	Op Returns U	real	total
MPOPShrkC	Op Shrink C	real	total
MPOPShrkR	Op Shrink R	real	total
MPOPShrkU	Op Shrink U	real	total
MPOPSls1R	Op Sales Reg+Promo R	real	total
MPOPSls1U	Op Sales Reg+Promo U	real	total
MPOPSls2R	Op Sales Clr R	real	total
MPOPSls2U	Op Sales Clr U	real	total
MPOPSlsCmpR	Op Comp Sales R	real	total
MPOPSlsNCpR	Op Non-Comp Sales R	real	total
MPOPSlsR	Op Sales R	real	total
MPOPSlsU	Op Sales U	real	total
MPOPVndFndR	Op Vendor Funds R	real	total
MPOPWFMkDR	Op W/F Markdown R	real	total
MPOPWFMkUR	Op W/F Markup R	real	total
mpopims1r	Op Pick up in Store (Reg+Promo) R	real	total
mpopims2r	Op Pick up in Store (Clr) R	real	total
mpopimsr	Op Pick up in Store R	real	total
mpopims1u	Op Pick up in Store (Reg+Promo) U	real	total
mpopims2u	Op Pick up in Store (Clr) U	real	total
mpopimsu	Op Pick up in Store U	real	total
mpopmtd1r	Op Return Back to Online (Reg+Promo) R	real	total
mpopmtd2r	Op Return Back to Online (Clr) R	real	total
mpopmtdr	Op Return Back to Online R	real	total
mpopmtd1u	Op Return Back to Online (Reg+Promo) U	real	total
mpopmtd2u	Op Return Back to Online (Clr) U	real	total
mpopmtdu	Op Return Back to Online U	real	total

Table A-2 (Cont.) MFP Retail Cloud Service Merch Plan - Original Plan Export Measures

Measure	Measure Label	Data Type	Aggregation Type
mpopnrtn1r	Op Net Return Reg+Promo R	real	total
mpopnrtn2r	Op Net Return Clr R	real	total
mpopnrtnr	Op Net Return R	real	total
mpopnrtn1u	Op Net Return Reg+Promo U	real	total
mpopnrtn2u	Op Net Return Clr U	real	total
mpopnrtnu	Op Net Return U	real	total
mpopstc1r	Op Ship to Customer (Reg+Promo) R	real	total
mpopstc2r	Op Ship to Customer (Clr) R	real	total
mpopstcr	Op Ship to Customer R	real	total
mpopstc1u	Op Ship to Customer (Reg+Promo) U	real	total
mpopstc2u	Op Ship to Customer (Clr) U	real	total
mpopstcu	Op Ship to Customer U	real	total

MFP Retail Cloud Service Merch Plan - Submitted Plan Export

Export Version Name: Merch Plan - Submitted Plan

Export Version: mpwa

Export Mask Measure: MP Wa Export

Exported File: export_mpwa.dat

Table A-3 MFP Retail Cloud Service Merch Plan - Submitted Plan Export Measures

Measure	Measure Label	Data Type	Aggregation Type
week	Week	NA	NA
scls	Subclass	NA	NA
chnl	Channel	NA	NA
MPWABOP1R	Wa BOP Reg+Promo R	real	pst
MPWABOP1U	Wa BOP Reg+Promo U	real	pst
MPWABOP2R	Wa BOP Clr R	real	pst
MPWABOP2U	Wa BOP Clr U	real	pst
MPWABOPC	Wa BOP C	real	pst
MPWABOPR	Wa BOP R	real	pst
MPWABOPU	Wa BOP U	real	pst
MPWAConsInvR	Wa Cons Inv R	real	total
MPWAEOP1R	Wa EOP Reg+Promo R	real	pet
MPWAEOP1U	Wa EOP Reg+Promo U	real	pet

Table A-3 (Cont.) MFP Retail Cloud Service Merch Plan - Submitted Plan Export

Measure	Measure Label	Data Type	Aggregation Type
MPWAEOP2R	Wa EOP Clr R	real	pet
MPWAEOP2U	Wa EOP Clr U	real	pet
MPWAEOPC	Wa EOP C	real	pet
MPWAEOPR	Wa EOP R	real	pet
MPWAEOPU	Wa EOP U	real	pet
MPWAGMR	Wa GM R	real	total
MPWAINVAdjR	Wa Inv Adj R	real	total
MPWAINVAdjU	Wa Inv Adj U	real	total
MPWAMiscAdjR	Wa Misc Adj R	real	total
MPWAMiscAdjU	Wa Misc Adj U	real	total
MPWAMkd1R	Wa Markdown Reg+Promo R	real	total
MPWAMkd2R	Wa Markdown Clr R	real	total
MPWAMkdR	Wa Markdown R	real	total
MPWAMkdWFR	Wa Markdown due to W/F R	real	total
MPWAMOCR	Wa Move to Clr R	real	total
MPWAMOCU	Wa Move to Clr U	real	total
MPWAMOSC	Wa MOS C	real	total
MPWAMOSR	Wa MOS R	real	total
MPWAMOSU	Wa MOS U	real	total
MPWANGMR	Wa Net GM R	real	total
MPWANSlS1R	Wa Net Sales Reg+Promo R	real	total
MPWANSlS1U	Wa Net Sales Reg+Promo U	real	total
MPWANSlS2R	Wa Net Sales Clr R	real	total
MPWANSlS2U	Wa Net Sales Clr U	real	total
MPWANSlSR	Wa Net Sales R	real	total
MPWANSlSU	Wa Net Sales U	real	total
MPWARcptC	Wa Receipts C	real	total
MPWARcptR	Wa Receipts R	real	total
MPWARcptU	Wa Receipts U	real	total
MPWARoyalR	Wa Royalties R	real	total
MPWARtn1R	Wa Returns Reg+Promo R	real	total
MPWARtn1U	Wa Returns Reg+Promo U	real	total
MPWARtn2R	Wa Returns Clr R	real	total

Table A-3 (Cont.) MFP Retail Cloud Service Merch Plan - Submitted Plan Export

Measure	Measure Label	Data Type	Aggregation Type
MPWARtn2U	Wa Returns Clr U	real	total
MPWARtnR	Wa Returns R	real	total
MPWARtnU	Wa Returns U	real	total
MPWAShrkC	Wa Shrink C	real	total
MPWAShrkR	Wa Shrink R	real	total
MPWAShrkU	Wa Shrink U	real	total
MPWASls1R	Wa Sales Reg+Promo R	real	total
MPWASls1U	Wa Sales Reg+Promo	real	total
MPWASls2R	Wa Sales Clr R	real	total
MPWASls2U	Wa Sales Clr U	real	total
MPWASlsCmpR	Wa Comp Sales R	real	total
MPWASlsNCpR	Wa Non-Comp Sales R	real	total
MPWASlsR	Wa Sales R	real	total
MPWASlsU	Wa Sales U	real	total
MPWAVndFndR	Wa Vendor Funds R	real	total
MPWAWFMkDR	Wa W/F Markdown R	real	total
MPWAWFMkUR	Wa W/F Markup R	real	total
mpwaims1r	Wa Pick up in Store (Reg+Promo) R	real	total
mpwaims2r	Wa Pick up in Store (Clr) R	real	total
mpwaimsr	Wa Pick up in Store R	real	total
mpwaims1u	Wa Pick up in Store (Reg+Promo) U	real	total
mpwaims2u	Wa Pick up in Store (Clr) U	real	total
mpwaimsu	Wa Pick up in Store U	real	total
mpwamtd1r	Wa Return Back to Online (Reg+Promo) R	real	total
mpwamtd2r	Wa Return Back to Online (Clr) R	real	total
mpwamtdr	Wa Return Back to Online R	real	total
mpwamtd1u	Wa Return Back to Online (Reg+Promo) U	real	total
mpwamtd2u	Wa Return Back to Online (Clr) U	real	total
mpwamtdu	Wa Return Back to Online U	real	total
mpwanrtn1r	Wa Net Return Reg+Promo R	real	total
mpwanrtn2r	Wa Net Return Clr R	real	total

Table A-3 (Cont.) MFP Retail Cloud Service Merch Plan - Submitted Plan Export

Measure	Measure Label	Data Type	Aggregation Type
mpwanrtnr	Wa Net Return R	real	total
mpwanrtn1u	Wa Net Return Reg+Promo U	real	total
mpwanrtn2u	Wa Net Return Clr U	real	total
mpwanrtnu	Wa Net Return U	real	total
mpwastc1r	Wa Ship to Customer (Reg+Promo) R	real	total
mpwastc2r	Wa Ship to Customer (Clr) R	real	total
mpwastcr	Wa Ship to Customer R	real	total
mpwastc1u	Wa Ship to Customer (Reg+Promo) U	real	total
mpwastc2u	Wa Ship to Customer (Clr) U	real	total
mpwastcu	Wa Ship to Customer U	real	total

MFP Retail Cloud Service Merch Plan - Working Plan Export

Export Version Name: Merch Plan - Working Plan

Export Version: mpwp

Export Mask Measure: MP Wp Export

Exported File: export_mpwp.dat

Table A-4 MFP Retail Cloud Service Merch Plan - Working Plan Export Measures

Measure	Measure Label	Data Type	Aggregation Type
week	Week	NA	NA
scls	Subclass	NA	NA
chnl	Channel	NA	NA
MPWPBOP1R	Wp BOP Reg+Promo R	real	pst
MPWPBOP1U	Wp BOP Reg+Promo U	real	pst
MPWPBOP2R	Wp BOP Clr R	real	pst
MPWPBOP2U	Wp BOP Clr U	real	pst
MPWPBOPC	Wp BOP C	real	pst
MPWPBOPR	Wp BOP R	real	pst
MPWPBOPU	Wp BOP U	real	pst
MPWPConsInvR	Wp Cons Inv R	real	total
MPWPEOP1R	Wp EOP Reg+Promo R	real	pet
MPWPEOP1U	Wp EOP Reg+Promo U	real	pet
MPWPEOP2R	Wp EOP Clr R	real	pet
MPWPEOP2U	Wp EOP Clr U	real	pet

Table A-4 (Cont.) MFP Retail Cloud Service Merch Plan - Working Plan Export Measures

Measure	Measure Label	Data Type	Aggregation Type
MPWPEOPC	Wp EOP C	real	pet
MPWPEOPR	Wp EOP R	real	pet
MPWPEOPU	Wp EOP U	real	pet
MPWPGMR	Wp GM R	real	total
MPWPIInvAdjR	Wp Inv Adj R	real	total
MPWPIInvAdjU	Wp Inv Adj U	real	total
MPWPMiscAdjR	Wp Misc Adj R	real	total
MPWPMiscAdjU	Wp Misc Adj U	real	total
MPWPMkd1R	Wp Markdown Reg+Promo R	real	total
MPWPMkd2R	Wp Markdown Clr R	real	total
MPWPMkdR	Wp Markdown R	real	total
MPWPMkdWFR	Wp Markdown due to W/F R	real	total
MPWPMOCR	Wp Move to Clr R	real	total
MPWPMOCU	Wp Move to Clr U	real	total
MPWPMOSC	Wp MOS C	real	total
MPWPMOSR	Wp MOS R	real	total
MPWPMOSU	Wp MOS U	real	total
MPWPNGMR	Wp Net GM R	real	total
MPWPNSIs1R	Wp Net Sales Reg+Promo R	real	total
MPWPNSIs1U	Wp Net Sales Reg+Promo U	real	total
MPWPNSIs2R	Wp Net Sales Clr R	real	total
MPWPNSIs2U	Wp Net Sales Clr U	real	total
MPWPNSIsR	Wp Net Sales R	real	total
MPWPNSIsU	Wp Net Sales U	real	total
MPWPRcptC	Wp Receipts C	real	total
MPWPRcptR	Wp Receipts R	real	total
MPWPRcptU	Wp Receipts U	real	total
MPWPRoyalR	Wp Royalties R	real	total
MPWPRtn1R	Wp Returns Reg+Promo R	real	total
MPWPRtn1U	Wp Returns Reg+Promo U	real	total
MPWPRtn2R	Wp Returns Clr R	real	total
MPWPRtn2U	Wp Returns Clr U	real	total
MPWPRtnR	Wp Returns R	real	total

Table A-4 (Cont.) MFP Retail Cloud Service Merch Plan - Working Plan Export Measures

Measure	Measure Label	Data Type	Aggregation Type
MPWPRtnU	Wp Returns U	real	total
MPWPShrkC	Wp Shrink C	real	total
MPWPShrkR	Wp Shrink R	real	total
MPWPShrkU	Wp Shrink U	real	total
MPWPSls1R	Wp Sales Reg+Promo R	real	total
MPWPSls1U	Wp Sales Reg+Promo	real	total
MPWPSls2R	Wp Sales Clr R	real	total
MPWPSls2U	Wp Sales Clr U	real	total
MPWPSlsCmpR	Wp Comp Sales R	real	total
MPWPSlsNCpR	Wp Non-Comp Sales R	real	total
MPWPSlsR	Wp Sales R	real	total
MPWPSlsU	Wp Sales U	real	total
MPWPVndFndR	Wp Vendor Funds R	real	total
MPWPWFMkDR	Wp W/F Markdown R	real	total
MPWPWFMkUR	Wp W/F Markup R	real	total
MPWPOOAdjC	Wp On Order Adj C	real	total
MPWPOOAdjR	Wp On Order Adj R	real	total
MPWPOOAdjU	Wp On Order Adj U	real	total
MPWPOOC	Wp On Order C	real	total
MPWPOOR	Wp On Order R	real	total
MPWPOOU	Wp On Order U	real	total
mpwpims1r	Wp Pick up in Store (Reg+Promo) R	real	total
mpwpims2r	Wp Pick up in Store (Clr) R	real	total
mpwpimsr	Wp Pick up in Store R	real	total
mpwpims1u	Wp Pick up in Store (Reg+Promo) U	real	total
mpwpims2u	Wp Pick up in Store (Clr) U	real	total
mpwpimsu	Wp Pick up in Store U	real	total
mpwpmtd1r	Wp Return Back to Online (Reg+Promo) R	real	total
mpwpmtd2r	Wp Return Back to Online (Clr) R	real	total
mpwpmtdr	Wp Return Back to Online R	real	total
mpwpmtd1u	Wp Return Back to Online (Reg+Promo) U	real	total
mpwpmtd2u	Wp Return Back to Online (Clr) U	real	total

Table A-4 (Cont.) MFP Retail Cloud Service Merch Plan - Working Plan Export Measures

Measure	Measure Label	Data Type	Aggregation Type
mpwpmtdu	Wp Return Back to Online U	real	total
mpwpnrtn1r	Wp Net Return Reg+Promo R	real	total
mpwpnrtn2r	Wp Net Return Clr R	real	total
mpwpnrtnr	Wp Net Return R	real	total
mpwpnrtn1u	Wp Net Return Reg+Promo U	real	total
mpwpnrtn2u	Wp Net Return Clr U	real	total
mpwpnrtnu	Wp Net Return U	real	total
mpwpstc1r	Wp Ship to Customer (Reg+Promo) R	real	total
mpwpstc2r	Wp Ship to Customer (Clr) R	real	total
mpwpstcr	Wp Ship to Customer R	real	total
mpwpstc1u	Wp Ship to Customer (Reg+Promo) U	real	total
mpwpstc2u	Wp Ship to Customer (Clr) U	real	total
mpwpstcu	Wp Ship to Customer U	real	total

MFP Retail Cloud Service Merch Target - Target Plan Export

Export Version Name: Merch Target - Target Plan

Export Version: mttg

Export Mask Measure: MT Tgt Export

Exported File: export_mttg.dat

Table A-5 MFP Retail Cloud Service Merch Target - Target Plan Export Measures

Measure	Measure Label	Data Type	Aggregation Type
week	Week	NA	NA
dept	Department	NA	NA
chnl	Channel	NA	NA
MTTGBOP1R	Tgt BOP Reg+Promo R	real	pst
MTTGBOP1U	Tgt BOP Reg+Promo U	real	pst
MTTGBOP2R	Tgt BOP Clr R	real	pst
MTTGBOP2U	Tgt BOP Clr U	real	pst
MTTGBOPC	Tgt BOP C	real	pst
MTTGBOPR	Tgt BOP R	real	pst
MTTGBOPU	Tgt BOP U	real	pst
MTTGConsInvR	Tgt Cons Inv R	real	total

Table A-5 (Cont.) MFP Retail Cloud Service Merch Target - Target Plan Export Measures

Measure	Measure Label	Data Type	Aggregation Type
MTTGEOP1R	Tgt EOP Reg+Promo R	real	pet
MTTGEOP1U	Tgt EOP Reg+Promo U	real	pet
MTTGEOP2R	Tgt EOP Clr R	real	pet
MTTGEOP2U	Tgt EOP Clr U	real	pet
MTTGEOPC	Tgt EOP C	real	pet
MTTGEOPR	Tgt EOP R	real	pet
MTTGEOPU	Tgt EOP U	real	pet
MTTGGM R	Tgt GM R	real	total
MTTGInvAdjR	Tgt Inv Adj R	real	total
MTTGInvAdjU	Tgt Inv Adj U	real	total
MTTGMiscAdjR	Tgt Misc Adj R	real	total
MTTGMiscAdjU	Tgt Misc Adj U	real	total
MTTGMkd1R	Tgt Markdown Reg+Promo R	real	total
MTTGMkd2R	Tgt Markdown Clr R	real	total
MTTGMkdR	Tgt Markdown R	real	total
MTTGMkdWFR	Tgt Markdown due to W/F R	real	total
MTTGMOCR	Tgt Move to Clr R	real	total
MTTGMOCU	Tgt Move to Clr U	real	total
MTTGMOSC	Tgt MOS C	real	total
MTTGMOSR	Tgt MOS R	real	total
MTTGMOSU	Tgt MOS U	real	total
MTTGNGMR	Tgt Net GM R	real	total
MTTGNSls1R	Tgt Net Sales Reg+Promo R	real	total
MTTGNSls1U	Tgt Net Sales Reg+Promo U	real	total
MTTGNSls2R	Tgt Net Sales Clr R	real	total
MTTGNSls2U	Tgt Net Sales Clr U	real	total
MTTGNSlsR	Tgt Net Sales R	real	total
MTTGNSlsU	Tgt Net Sales U	real	total
MTTGRcptC	Tgt Receipts C	real	total
MTTGRcptR	Tgt Receipts R	real	total
MTTGRcptU	Tgt Receipts U	real	total
MTTGRoyalR	Tgt Royalties R	real	total
MTTGRtn1R	Tgt Returns Reg+Promo R	real	total

Table A-5 (Cont.) MFP Retail Cloud Service Merch Target - Target Plan Export Measures

Measure	Measure Label	Data Type	Aggregation Type
MTTGRtn1U	Tgt Returns Reg+Promo U	real	total
MTTGRtn2R	Tgt Returns Clr R	real	total
MTTGRtn2U	Tgt Returns Clr U	real	total
MTTGRtnR	Tgt Returns R	real	total
MTTGRtnU	Tgt Returns U	real	total
MTTGShrkC	Tgt Shrink C	real	total
MTTGShrkR	Tgt Shrink R	real	total
MTTGShrkU	Tgt Shrink U	real	total
MTTGSls1R	Tgt Sales Reg+Promo R	real	total
MTTGSls1U	Tgt Sales Reg+Promo U	real	total
MTTGSls2R	Tgt Sales Clr R	real	total
MTTGSls2U	Tgt Sales Clr U	real	total
MTTGSlsCmpR	Tgt Comp Sales R	real	total
MTTGSlsNCpR	Tgt Non-Comp Sales R	real	total
MTTGSlsR	Tgt Sales R	real	total
MTTGSlsU	Tgt Sales U	real	total
MTTGVndFndR	Tgt Vendor Funds R	real	total
MTTGWFMkDR	Tgt W/F Markdown R	real	total
MTTGWFMkUR	Tgt W/F Markup R	real	total
mttgims1r	Tgt Pick up in Store (Reg+Promo) R	real	total
mttgims2r	Tgt Pick up in Store (Clr) R	real	total
mttgimsr	Tgt Pick up in Store R	real	total
mttgims1u	Tgt Pick up in Store (Reg+Promo) U	real	total
mttgims2u	Tgt Pick up in Store (Clr) U	real	total
mttgimsu	Tgt Pick up in Store U	real	total
mttgmt1r	Tgt Return Back to Online (Reg+Promo) R	real	total
mttgmt2r	Tgt Return Back to Online (Clr) R	real	total
mttgmtdr	Tgt Return Back to Online R	real	total
mttgmt1u	Tgt Return Back to Online (Reg+Promo) U	real	total
mttgmt2u	Tgt Return Back to Online (Clr) U	real	total
mttgmtdu	Tgt Return Back to Online U		

Table A-5 (Cont.) MFP Retail Cloud Service Merch Target - Target Plan Export Measures

Measure	Measure Label	Data Type	Aggregation Type
mttgnrtn1r	Tgt Net Return Reg+Promo R	real	total
mttgnrtn2r	Tgt Net Return Clr R	real	total
mttgnrtnr	Tgt Net Return R	real	total
mttgnrtn1u	Tgt Net Return Reg+Promo U	real	total
mttgnrtn2u	Tgt Net Return Clr U	real	total
mttgnrtnu	Tgt Net Return U	real	total
mttgstc1r	Tgt Ship to Customer (Reg+Promo) R	real	total
mttgstc2r	Tgt Ship to Customer (Clr) R	real	total
mttgstcr	Tgt Ship to Customer R	real	total
mttgstc1u	Tgt Ship to Customer (Reg+Promo) U	real	total
mttgstc2u	Tgt Ship to Customer (Clr) U	real	total
mttgstcu	Tgt Ship to Customer U	real	total

MFP Retail Cloud Service Merch Target - Working Plan Export

Export Version Name: Merch Target - Working Plan

Export Version: mtwp

Export Mask Measure: MT Wp Export

Exported File: export_mtwp.dat

Table A-6 MFP Retail Cloud Service Merch Target - Working Plan Export Measures

Measure	Measure Label	Data Type	Aggregation Type
week	Week	NA	NA
dept	Department	NA	NA
chnl	Channel	NA	NA
MTWPBOP1R	Wp BOP Reg+Promo R	real	pst
MTWPBOP1U	Wp BOP Reg+Promo U	real	pst
MTWPBOP2R	Wp BOP Clr R	real	pst
MTWPBOP2U	Wp BOP Clr U	real	pst
MTWPBOPC	Wp BOP C	real	pst
MTWPBOPR	Wp BOP R	real	pst
MTWPBOPU	Wp BOP U	real	pst
MTWPConsInvR	Wp Cons Inv R	real	total
MTWPEOP1R	Wp EOP Reg+Promo R	real	pet
MTWPEOP1U	Wp EOP Reg+Promo U	real	pet

Table A-6 (Cont.) MFP Retail Cloud Service Merch Target - Working Plan Export

Measure	Measure Label	Data Type	Aggregation Type
MTWPEOP2R	Wp EOP Clr R	real	pet
MTWPEOP2U	Wp EOP Clr U	real	pet
MTWPEOPC	Wp EOP C	real	pet
MTWPEOPR	Wp EOP R	real	pet
MTWPEOPU	Wp EOP U	real	pet
MTWPGMR	Wp GM R	real	total
MTWPIInvAdjR	Wp Inv Adj R	real	total
MTWPIInvAdjU	Wp Inv Adj U	real	total
MTWPMiscAdjR	Wp Misc Adj R	real	total
MTWPMiscAdjU	Wp Misc Adj U	real	total
MTWPMkd1R	Wp Markdown Reg+Promo R	real	total
MTWPMkd2R	Wp Markdown Clr R	real	total
MTWPMkdR	Wp Markdown R	real	total
MTWPMkdWFR	Wp Markdown due to W/F R	real	total
MTWPMOCR	Wp Move to Clr R	real	total
MTWPMOCU	Wp Move to Clr U	real	total
MTWPMOSC	Wp MOS C	real	total
MTWPMOSR	Wp MOS R	real	total
MTWPMOSU	Wp MOS U	real	total
MTWPNGMR	Wp Net GM R	real	total
MTWPNSIs1R	Wp Net Sales Reg+Promo R	real	total
MTWPNSIs1U	Wp Net Sales Reg+Promo U	real	total
MTWPNSIs2R	Wp Net Sales Clr R	real	total
MTWPNSIs2U	Wp Net Sales Clr U	real	total
MTWPNSIsR	Wp Net Sales R	real	total
MTWPNSIsU	Wp Net Sales U	real	total
MTWPOOAdjC	Wp On Order Adj C	real	total
MTWPOOAdjR	Wp On Order Adj R	real	total
MTWPOOAdjU	Wp On Order Adj U	real	total
MTWPOOC	Wp On Order C	real	total
MTWPOOR	Wp On Order R	real	total
MTWPOOU	Wp On Order U	real	total
MTWPRcptC	Wp Receipts C	real	total
MTWPRcptR	Wp Receipts R	real	total
MTWPRcptU	Wp Receipts U	real	total

Table A-6 (Cont.) MFP Retail Cloud Service Merch Target - Working Plan Export

Measure	Measure Label	Data Type	Aggregation Type
MTWPRoyalR	Wp Royalties R	real	total
MTWPRtn1R	Wp Returns Reg+Promo R	real	total
MTWPRtn1U	Wp Returns Reg+Promo U	real	total
MTWPRtn2R	Wp Returns Clr R	real	total
MTWPRtn2U	Wp Returns Clr U	real	total
MTWPRtnR	Wp Returns R	real	total
MTWPRtnU	Wp Returns U	real	total
MTWPShrkC	Wp Shrink C	real	total
MTWPShrkR	Wp Shrink R	real	total
MTWPShrkU	Wp Shrink U	real	total
MTWPSls1R	Wp Sales Reg+Promo R	real	total
MTWPSls1U	Wp Sales Reg+Promo	real	total
MTWPSls2R	Wp Sales Clr R	real	total
MTWPSls2U	Wp Sales Clr U	real	total
MTWPSlsCmpR	Wp Comp Sales R	real	total
MTWPSlsNCpR	Wp Non-Comp Sales R	real	total
MTWPSlsR	Wp Sales R	real	total
MTWPSlsU	Wp Sales U	real	total
MTWPVndFndR	Wp Vendor Funds R	real	total
MTWPWFMkDR	Wp W/F Markdown R	real	total
MTWPWFMkUR	Wp W/F Markup R	real	total
mtwpims1r	Wp Pick up in Store (Reg+Promo) R	real	total
mtwpims2r	Wp Pick up in Store (Clr) R	real	total
mtwpimsr	Wp Pick up in Store R	real	total
mtwpims1u	Wp Pick up in Store (Reg+Promo) U	real	total
mtwpims2u	Wp Pick up in Store (Clr) U	real	total
mtwpimsu	Wp Pick up in Store U	real	total
mtwpmtd1r	Wp Return Back to Online (Reg+Promo) R	real	total
mtwpmtd2r	Wp Return Back to Online (Clr) R	real	total
mtwpmtdr	Wp Return Back to Online R	real	total
mtwpmtd1u	Wp Return Back to Online (Reg+Promo) U	real	total

Table A-6 (Cont.) MFP Retail Cloud Service Merch Target - Working Plan Export

Measure	Measure Label	Data Type	Aggregation Type
mtwpmtd2u	Wp Return Back to Online (Clr) U	real	total
mtwpmtdu	Wp Return Back to Online U		
mtwprtn1r	Wp Net Return Reg+Promo R	real	total
mtwprtn2r	Wp Net Return Clr R	real	total
mtwprtnr	Wp Net Return R	real	total
mtwprtn1u	Wp Net Return Reg+Promo U	real	total
mtwprtn2u	Wp Net Return Clr U	real	total
mtwprtnu	Wp Net Return U	real	total
mtwpstc1r	Wp Ship to Customer (Reg+Promo) R	real	total
mtwpstc2r	Wp Ship to Customer (Clr) R	real	total
mtwpstcr	Wp Ship to Customer R	real	total
mtwpstc1u	Wp Ship to Customer (Reg+Promo) U	real	total
mtwpstc2u	Wp Ship to Customer (Clr) U	real	total
mtwpstcu	Wp Ship to Customer U	real	total

MFP Retail Cloud Service Location Plan - Current Plan Export

Export Version Name: Location Plan - Current Plan

Export Version: lpcp

Export Mask Measure: LP Cp Export

Exported File: export_lpcp.dat

Table A-7 MFP Retail Cloud Service Location Plan - Current Plan Export Measures

Measure	Measure Label	Data Type	Aggregation Type
week	Week	NA	NA
dept	Department	NA	NA
stor	Location	NA	NA
LPCBOPC	Cp BOP C	real	pst
LPCBOPR	Cp BOP R	real	pst
LPCBOPU	Cp BOP U	real	pst
LPCPEOPC	Cp EOP C	real	pet
LPCPEOPR	Cp EOP R	real	pet
LPCPEOPU	Cp EOP U	real	pet

Table A-7 (Cont.) MFP Retail Cloud Service Location Plan - Current Plan Export

Measure	Measure Label	Data Type	Aggregation Type
LPCPMkdR	Cp Markdown R	real	total
LPCPMkdWFR	Cp Markdown due to W/F R	real	total
LPCPNSIsR	Cp Net Sales R	real	total
LPCPNSIsU	Cp Net Sales U	real	total
LPCPRcptC	Cp Receipts C	real	total
LPCPRcptR	Cp Receipts R	real	total
LPCPRcptU	Cp Receipts U	real	total
LPCPRtnR	Cp Returns R	real	total
LPCPRtnU	Cp Returns U	real	total
LPCPShrkC	Cp Shrink C	real	total
LPCPShrkR	Cp Shrink R	real	total
LPCPShrkU	Cp Shrink U	real	total
LPCPSIsR	Cp Sales R	real	total
LPCPSIsU	Cp Sales U	real	total
LPCPTranIOR	Cp Transfers In/Out R	real	total
LPCPTranIOU	Cp Transfers In/Out U	real	total
LPCPWFMkDR	Cp W/F Markdown R	real	total
LPCPWFMkUR	Cp W/F Markup R	real	total

MFP Retail Cloud Service Location Plan - Original Plan Export

Export Version Name: Location Plan - Original Plan

Export Version: lpop

Export Mask Measure: LP Op Export

Exported File: export_lpop.dat

Table A-8 MFP Retail Cloud Service Location Plan - Original Plan Export Measures

Measure	Measure Label	Data Type	Aggregation Type
week	Week	NA	NA
dept	Department	NA	NA
stor	Location	NA	NA
LPOPBOPC	Op BOP C	real	pst
LPOPBOPR	Op BOP R	real	pst
LPOPBOPU	Op BOP U	real	pst
LPOPEOPC	Op EOP C	real	pet
LPOPEOPR	Op EOP R	real	pet
LPOPEOPU	Op EOP U	real	pet
LPOPmkdR	Op Markdown R	real	total

Table A-8 (Cont.) MFP Retail Cloud Service Location Plan - Original Plan Export

Measure	Measure Label	Data Type	Aggregation Type
LPOPmkdWFR	Op Markdown due to W/F R	real	total
LPOPNSIsR	Op Net Sales R	real	total
LPOPNSIsU	Op Net Sales U	real	total
LPOP RcptC	Op Receipts C	real	total
LPOP RcptR	Op Receipts R	real	total
LPOP RcptU	Op Receipts U	real	total
LPOP RtnR	Op Returns R	real	total
LPOP RtnU	Op Returns U	real	total
LPOPShrkC	Op Shrink C	real	total
LPOPShrkR	Op Shrink R	real	total
LPOPShrkU	Op Shrink U	real	total
LPOPSIsR	Op Sales R	real	total
LPOPSIsU	Op Sales U	real	total
LPOPTranIOR	Op Transfers In/Out R	real	total
LPOPTranIOU	Op Transfers In/Out U	real	total
LPOPWFMkDR	Op W/F Markdown R	real	total
LPOPWFMkUR	Op W/F Markup R	real	total

MFP Retail Cloud Service Location Plan - Working Plan Export

Export Version Name: Location Plan - Working Plan

Export Version: lpwp

Export Mask Measure: LP Wp Export

Exported File: export_lpwp.dat

Table A-9 MFP Retail Cloud Service Location Plan - Working Plan Export Measures

Measure	Measure Label	Data Type	Aggregation Type
week	Week	NA	NA
dept	Department	NA	NA
stor	Location	NA	NA
LPWPBOPC	Wp BOP C	real	pst
LPWPBOPR	Wp BOP R	real	pst
LPWPBOPU	Wp BOP U	real	pst
LPWPEOPC	Wp EOP C	real	pet
LPWPEOPR	Wp EOP R	real	pet
LPWPEOPU	Wp EOP U	real	pet

Table A-9 (Cont.) MFP Retail Cloud Service Location Plan - Working Plan Export

Measure	Measure Label	Data Type	Aggregation Type
LPWPMkdR	Wp Markdown R	real	total
LPWPMkdWFR	Wp Markdown due to W/F R	real	total
LPWPNSIsR	Wp Net Sales R	real	total
LPWPNSIsU	Wp Net Sales U	real	total
LPWPRcptC	Wp Receipts C	real	total
LPWPRcptR	Wp Receipts R	real	total
LPWPRcptU	Wp Receipts U	real	total
LPWPRtnR	Wp Returns R	real	total
LPWPRtnU	Wp Returns U	real	total
LPWPShrkC	Wp Shrink C	real	total
LPWPShrkR	Wp Shrink R	real	total
LPWPShrkU	Wp Shrink U	real	total
LPWPSIsR	Wp Sales R	real	total
LPWPSIsU	Wp Sales U	real	total
LPWPTranIOR	Wp Transfers In/Out R	real	total
LPWPTranIOU	Wp Transfers In/Out U	real	total
LPWPWFmKDR	Wp W/F Markdown R	real	total
LPWPWFmKUR	Wp W/F Markup R	real	total
LPWPOOAdjC	Wp On Order Adj C	real	total
LPWPOOAdjR	Wp On Order Adj R	real	total
LPWPOOAdjU	Wp On Order Adj U	real	total
LPWPOOC	Wp On Order C	real	total
LPWPOOR	Wp On Order R	real	total
LPWPOOU	Wp On Order U	real	total

MFP Retail Cloud Service Location Target - Target Plan Export

Export Version Name: Location Target - Target Plan

Export Version: lttg

Export Mask Measure: LT Tgt Export

Exported File: export_lttg.dat

Table A-10 MFP Retail Cloud Service Location Target - Target Plan Export Measures

Measure	Measure Label	Data Type	Aggregation Type
week	Week	NA	NA
cmpp	Company	NA	NA
stor	Location	NA	NA
LTTGMkdR	Tgt Markdown R	real	total

Table A-10 (Cont.) MFP Retail Cloud Service Location Target - Target Plan Export

Measure	Measure Label	Data Type	Aggregation Type
LTTGNSIsR	Tgt Net Sales R	real	total
LTTGNSIsU	Tgt Net Sales U	real	total
LTTGRtnR	Tgt Returns R	real	total
LTTGRtnU	Tgt Returns U	real	total
LTTGSIsR	Tgt Sales R	real	total
LTTGSIsU	Tgt Sales U	real	total

MFP Retail Cloud Service Location Target - Working Plan Export

Export Version Name: Location Target - Working Plan

Export Version: ltwp

Export Mask Measure: LT Wp Export

Exported File: export_ltwp.dat

Table A-11 MFP Retail Cloud Service Location Target - Working Plan Export Measures

Measure	Measure Label	Data Type	Aggregation Type
week	Week	NA	NA
cmpp	Company	NA	NA
stor	Location	NA	NA
LTWPMkdR	Wp Markdown R	real	total
LTWPNSIsR	Wp Net Sales R	real	total
LTWPNSIsU	Wp Net Sales U	real	total
LTWPRtnR	Wp Returns R	real	total
LTWPRtnU	Wp Returns U	real	total
LTWPSIsR	Wp Sales R	real	total
LTWPSIsU	Wp Sales U	real	total

MFP Cost Cloud Service Exports

This section lists the measures for the MFP Cost Cloud Service exports.

MFP Cost Cloud Service Merch Plan - Current Plan Export

Export Version Name: Merch Plan - Current Plan

Export Version: mpcp

Export Mask Measure: MP Cp Export

Exported File: export_mpcp.dat

Table A-12 MFP Cost Cloud Service Merch Plan - Current Plan Export Measures

Measure	Measure Label	Data Type	Aggregation Type
week	Week	NA	NA
scls	Subclass	NA	NA
chnl	Channel	NA	NA
MPCPBOP1C	Cp BOP Reg+Promo C	real	pst
MPCPBOP1U	Cp BOP Reg+Promo U	real	pst
MPCPBOP2C	Cp BOP Clr C	real	pst
MPCPBOP2U	Cp BOP Clr U	real	pst
MPCPBOPC	Cp BOP C	real	pst
MPCPBOPU	Cp BOP U	real	pst
MPCPConsInvC	Cp Cons Inv C	real	total
MPCPEOP1C	Cp EOP Reg+Promo C	real	pet
MPCPEOP1U	Cp EOP Reg+Promo U	real	pet
MPCPEOP2C	Cp EOP Clr C	real	pet
MPCPEOP2U	Cp EOP Clr U	real	pet
MPCPEOPC	Cp EOP C	real	pet
MPCPEOPU	Cp EOP U	real	pet
MPCPGMR	Cp GM R	real	total
MPCPInvAdjC	Cp Inv Adj C	real	total
MPCPInvAdjU	Cp Inv Adj U	real	total
MPCPMiscAdjC	Cp Misc Adj C	real	total
MPCPMiscAdjU	Cp Misc Adj U	real	total
MPCPMkd1R	Cp Markdown Reg+Promo R	real	total
MPCPMkd2R	Cp Markdown Clr R	real	total
MPCPMkdR	Cp Markdown R	real	total
MPCPMkdWFR	Cp Markdown due to W/F R	real	total
MPCPMOCC	Cp Move to Clr C	real	total
MPCPMOCU	Cp Move to Clr U	real	total
MPCPMOSC	Cp MOS C	real	total
MPCPMOSU	Cp MOS U	real	total
MPCPNGMR	Cp Net GM R	real	total
MPCPNSls1C	Cp Net Sales Reg+Promo C	real	total
MPCPNSls1R	Cp Net Sales Reg+Promo R	real	total
MPCPNSls1U	Cp Net Sales Reg+Promo U	real	total

Table A-12 (Cont.) MFP Cost Cloud Service Merch Plan - Current Plan Export Measures

Measure	Measure Label	Data Type	Aggregation Type
MPCPNSls2C	Cp Net Sales Clr C	real	total
MPCPNSls2R	Cp Net Sales Clr R	real	total
MPCPNSls2U	Cp Net Sales Clr U	real	total
MPCPNSlsC	Cp Net Sales C	real	total
MPCPNSlsR	Cp Net Sales R	real	total
MPCPNSlsU	Cp Net Sales U	real	total
MPCPRcptC	Cp Receipts C	real	total
MPCPRcptU	Cp Receipts U	real	total
MPCPRoyalR	Cp Royalties R	real	total
MPCPRtn1R	Cp Returns Reg+Promo R	real	total
MPCPRtn1U	Cp Returns Reg+Promo U	real	total
MPCPRtn2R	Cp Returns Clr R	real	total
MPCPRtn2U	Cp Returns Clr U	real	total
MPCPRtnR	Cp Returns R	real	total
MPCPRtnU	Cp Returns U	real	total
MPCPShrkC	Cp Shrink C	real	total
MPCPShrkU	Cp Shrink U	real	total
MPCPSls1R	Cp Sales Reg+Promo R	real	total
MPCPSls1U	Cp Sales Reg+Promo U	real	total
MPCPSls2R	Cp Sales Clr R	real	total
MPCPSls2U	Cp Sales Clr U	real	total
MPCPSlsCmpR	Cp Comp Sales R	real	total
MPCPSlsNCpR	Cp Non-Comp Sales R	real	total
MPCPSlsR	Cp Sales R	real	total
MPCPSlsU	Cp Sales U	real	total
MPCPVndFndR	Cp Vendor Funds R	real	total
MPCPWFMkDR	Cp W/F Markdown R	real	total
MPCPWFMkUR	Cp W/F Markup R	real	total

MFP Cost Cloud Service Merch Plan - Original Plan Export

Export Version Name: Merch Plan - Original Plan

Export Version: mpop

Export Mask Measure: MP Op Export

Exported File: export_mpop.dat

Table A-13 MFP Cost Cloud Service Merch Plan - Original Plan Export Measures

Measure	Measure Label	Data Type	Aggregation Type
week	Week	NA	NA
scls	Subclass	NA	NA
chnl	Channel	NA	NA
MPOPBOP1C	Op BOP Reg+Promo C	real	pst
MPOPBOP1U	Op BOP Reg+Promo U	real	pst
MPOPBOP2C	Op BOP Clr C	real	pst
MPOPBOP2U	Op BOP Clr U	real	pst
MPOPBOPC	Op BOP C	real	pst
MPOPBOPU	Op BOP U	real	pst
MPOPConsInvC	Op Cons Inv C	real	total
MPOPEOP1C	Op EOP Reg+Promo C	real	pet
MPOPEOP1U	Op EOP Reg+Promo U	real	pet
MPOPEOP2C	Op EOP Clr C	real	pet
MPOPEOP2U	Op EOP Clr U	real	pet
MPOPEOPC	Op EOP C	real	pet
MPOPEOPU	Op EOP U	real	pet
MPOPGMR	Op GM R	real	total
MPOPIInvAdjC	Op Inv Adj C	real	total
MPOPIInvAdjU	Op Inv Adj U	real	total
MPOPMiscAdjC	Op Misc Adj C	real	total
MPOPMiscAdjU	Op Misc Adj U	real	total
MPOPMkd1R	Op Markdown Reg+Promo R	real	total
MPOPMkd2R	Op Markdown Clr R	real	total
MPOPMkdR	Op Markdown R	real	total
MPOPMkdWFR	Op Markdown due to W/F R	real	total
MPOPMOCC	Op Move to Clr C	real	total
MPOPMOCU	Op Move to Clr U	real	total
MPOPMOSC	Op MOS C	real	total
MPOPMOSU	Op MOS U	real	total
MPOPNGMR	Op Net GM R	real	total
MPOPNSIs1C	Op Net Sales Reg+Promo C	real	total
MPOPNSIs1R	Op Net Sales Reg+Promo R	real	total
MPOPNSIs1U	Op Net Sales Reg+Promo U	real	total

Table A-13 (Cont.) MFP Cost Cloud Service Merch Plan - Original Plan Export Measures

Measure	Measure Label	Data Type	Aggregation Type
MPOPNSIs2C	Op Net Sales Clr C	real	total
MPOPNSIs2R	Op Net Sales Clr R	real	total
MPOPNSIs2U	Op Net Sales Clr U	real	total
MPOPNSIsC	Op Net Sales C	real	total
MPOPNSIsR	Op Net Sales R	real	total
MPOPNSIsU	Op Net Sales U	real	total
MPOP RcptC	Op Receipts C	real	total
MPOP RcptU	Op Receipts U	real	total
MPOP RoyalR	Op Royalties R	real	total
MPOP Rtn1R	Op Returns Reg+Promo R	real	total
MPOP Rtn1U	Op Returns Reg+Promo U	real	total
MPOP Rtn2R	Op Returns Clr R	real	total
MPOP Rtn2U	Op Returns Clr U	real	total
MPOP RtnR	Op Returns R	real	total
MPOP RtnU	Op Returns U	real	total
MPOP ShrkC	Op Shrink C	real	total
MPOP ShrkU	Op Shrink U	real	total
MPOP Sls1R	Op Sales Reg+Promo R	real	total
MPOP Sls1U	Op Sales Reg+Promo U	real	total
MPOP Sls2R	Op Sales Clr R	real	total
MPOP Sls2U	Op Sales Clr U	real	total
MPOP SlsCmpR	Op Comp Sales R	real	total
MPOP SlsNCpR	Op Non-Comp Sales R	real	total
MPOP SlsR	Op Sales R	real	total
MPOP SlsU	Op Sales U	real	total
MPOP VndFndR	Op Vendor Funds R	real	total
MPOP WFMkDR	Op W/F Markdown R	real	total
MPOP WFMkUR	Op W/F Markup R	real	total

MFP Cost Cloud Service Merch Plan - Submitted Plan Export

Export Version Name: Merch Plan - Submitted Plan

Export Version: mpwa

Export Mask Measure: MP WA Export

Exported File: export_mpwap.dat

Table A-14 MFP Cost Cloud Service Merch Plan - Submitted Plan Export Measures

Measure	Measure Label	Data Type	Aggregation Type
week	Week	NA	NA
scls	Subclass	NA	NA
chnl	Channel	NA	NA
MPWABOP1C	Wa BOP Reg+Promo C	real	pst
MPWABOP1U	Wa BOP Reg+Promo U	real	pst
MPWABOP2C	Wa BOP Clr C	real	pst
MPWABOP2U	Wa BOP Clr U	real	pst
MPWABOPC	Wa BOP C	real	pst
MPWABOPU	Wa BOP U	real	pst
MPWAConsInvC	Wa Cons Inv C	real	total
MPWAEOP1C	Wa EOP Reg+Promo C	real	pet
MPWAEOP1U	Wa EOP Reg+Promo U	real	pet
MPWAEOP2C	Wa EOP Clr C	real	pet
MPWAEOP2U	Wa EOP Clr U	real	pet
MPWAEOPC	Wa EOP C	real	pet
MPWAEOPU	Wa EOP U	real	pet
MPWAGMR	Wa GM R	real	total
MPWAInvAdjC	Wa Inv Adj C	real	total
MPWAInvAdjU	Wa Inv Adj U	real	total
MPWAMiscAdjC	Wa Misc Adj C	real	total
MPWAMiscAdjU	Wa Misc Adj U	real	total
MPWAMkd1R	Wa Markdown Reg+Promo R	real	total
MPWAMkd2R	Wa Markdown Clr R	real	total
MPWAMkdR	Wa Markdown R	real	total
MPWAMkdWFR	Wa Markdown due to W/F R	real	total
MPWAMOCC	Wa Move to Clr C	real	total
MPWAMOCU	Wa Move to Clr U	real	total
MPWAMOS C	Wa MOS C	real	total
MPWAMOSU	Wa MOS U	real	total
MPWANGMR	Wa Net GM R	real	total
MPWANSlS1C	Wa Net Sales Reg+Promo C	real	total
MPWANSlS1R	Wa Net Sales Reg+Promo R	real	total
MPWANSlS1U	Wa Net Sales Reg+Promo U	real	total

Table A-14 (Cont.) MFP Cost Cloud Service Merch Plan - Submitted Plan Export

Measure	Measure Label	Data Type	Aggregation Type
MPWANSIs2C	Wa Net Sales Clr C	real	total
MPWANSIs2R	Wa Net Sales Clr R	real	total
MPWANSIs2U	Wa Net Sales Clr U	real	total
MPWANSIsC	Wa Net Sales C	real	total
MPWANSIsR	Wa Net Sales R	real	total
MPWANSIsU	Wa Net Sales U	real	total
MPWARcptC	Wa Receipts C	real	total
MPWARcptU	Wa Receipts U	real	total
MPWARoyalR	Wa Royalties R	real	total
MPWARtn1R	Wa Returns Reg+Promo R	real	total
MPWARtn1U	Wa Returns Reg+Promo U	real	total
MPWARtn2R	Wa Returns Clr R	real	total
MPWARtn2U	Wa Returns Clr U	real	total
MPWARtnR	Wa Returns R	real	total
MPWARtnU	Wa Returns U	real	total
MPWAShrkC	Wa Shrink C	real	total
MPWAShrkU	Wa Shrink U	real	total
MPWASIs1R	Wa Sales Reg+Promo R	real	total
MPWASIs1U	Wa Sales Reg+Promo U	real	total
MPWASIs2R	Wa Sales Clr R	real	total
MPWASIs2U	Wa Sales Clr U	real	total
MPWASIsCmpR	Wa Comp Sales R	real	total
MPWASIsNCpR	Wa Non-Comp Sales R	real	total
MPWASIsR	Wa Sales R	real	total
MPWASIsU	Wa Sales U	real	total
MPWAVndFndR	Wa Vendor Funds R	real	total
MPWAWFMkDR	Wa W/F Markdown R	real	total
MPWAWFMkUR	Wa W/F Markup R	real	total

MFP Cost Cloud Service Merch Plan - Working Plan Export

Export Version Name: Merch Plan - Working Plan

Export Version: mpwp

Export Mask Measure: MP Wp Export

Exported File: export_mpwp.dat

Table A-15 MFP Cost Cloud Service Merch Plan - Working Plan Export Measures

Measure	Measure Label	Data Type	Aggregation Type
week	Week	NA	NA
scls	Subclass	NA	NA
chnl	Channel	NA	NA
MPWPBOP1C	Wp BOP Reg+Promo C	real	pst
MPWPBOP1U	Wp BOP Reg+Promo U	real	pst
MPWPBOP2C	Wp BOP Clr C	real	pst
MPWPBOP2U	Wp BOP Clr U	real	pst
MPWPBOPC	Wp BOP C	real	pst
MPWPBOPU	Wp BOP U	real	pst
MPWPConsInvC	Wp Cons Inv C	real	total
MPWPEOP1C	Wp EOP Reg+Promo C	real	pet
MPWPEOP1U	Wp EOP Reg+Promo U	real	pet
MPWPEOP2C	Wp EOP Clr C	real	pet
MPWPEOP2U	Wp EOP Clr U	real	pet
MPWPEOPC	Wp EOP C	real	pet
MPWPEOPU	Wp EOP U	real	pet
MPWPGMR	Wp GM R	real	total
MPWPInvAdjC	Wp Inv Adj C	real	total
MPWPInvAdjU	Wp Inv Adj U	real	total
MPWPMiscAdjC	Wp Misc Adj C	real	total
MPWPMiscAdjU	Wp Misc Adj U	real	total
MPWPMkd1R	Wp Markdown Reg+Promo R	real	total
MPWPMkd2R	Wp Markdown Clr R	real	total
MPWPMkdR	Wp Markdown R	real	total
MPWPMkdWFR	Wp Markdown due to W/F R	real	total
MPWPMOCC	Wp Move to Clr C	real	total
MPWPMOCU	Wp Move to Clr U	real	total
MPWPMOSC	Wp MOS C	real	total
MPWPMOSU	Wp MOS U	real	total
MPWPNGMR	Wp Net GM R	real	total
MPWPNSIs1C	Wp Net Sales Reg+Promo C	real	total
MPWPNSIs1R	Wp Net Sales Reg+Promo R	real	total
MPWPNSIs1U	Wp Net Sales Reg+Promo U	real	total

Table A-15 (Cont.) MFP Cost Cloud Service Merch Plan - Working Plan Export Measures

Measure	Measure Label	Data Type	Aggregation Type
MPWPNSIs2C	Wp Net Sales Clr C	real	total
MPWPNSIs2R	Wp Net Sales Clr R	real	total
MPWPNSIs2U	Wp Net Sales Clr U	real	total
MPWPNSIsC	Wp Net Sales C	real	total
MPWPNSIsR	Wp Net Sales R	real	total
MPWPNSIsU	Wp Net Sales U	real	total
MPWPRcptC	Wp Receipts C	real	total
MPWPRcptU	Wp Receipts U	real	total
MPWPRoyalR	Wp Royalties R	real	total
MPWPRtn1R	Wp Returns Reg+Promo R	real	total
MPWPRtn1U	Wp Returns Reg+Promo U	real	total
MPWPRtn2R	Wp Returns Clr R	real	total
MPWPRtn2U	Wp Returns Clr U	real	total
MPWPRtnR	Wp Returns R	real	total
MPWPRtnU	Wp Returns U	real	total
MPWPShrkC	Wp Shrink C	real	total
MPWPShrkU	Wp Shrink U	real	total
MPWPSIs1R	Wp Sales Reg+Promo R	real	total
MPWPSIs1U	Wp Sales Reg+Promo U	real	total
MPWPSIs2R	Wp Sales Clr R	real	total
MPWPSIs2U	Wp Sales Clr U	real	total
MPWPSIsCmpR	Wp Comp Sales R	real	total
MPWPSIsNCpR	Wp Non-Comp Sales R	real	total
MPWPSIsR	Wp Sales R	real	total
MPWPSIsU	Wp Sales U	real	total
MPWPVndFndR	Wp Vendor Funds R	real	total
MPWPWFMkDR	Wp W/F Markdown R	real	total
MPWPWFMkUR	Wp W/F Markup R	real	total
MPWPOOAdjC	Wp On Order Adj C	real	total
MPWPOOAdjU	Wp On Order Adj U	real	total
MPWPOOC	Wp On Order C	real	total
MPWPOOU	Wp On Order U	real	total

MFP Cost Cloud Service Merch Target - Target Plan Export

Export Version Name: Merch Target - Target Plan

Export Version: mttg

Export Mask Measure: MT Tgt Export

Exported File: export_mttg.dat

Table A-16 MFP Cost Cloud Service Merch Target - Target Plan Export Measures

Measure	Measure Label	Data Type	Aggregation Type
week	Week	NA	NA
dept	Department	NA	NA
chnl	Channel	NA	NA
MTTGBOP1C	Tgt BOP Reg+Promo C	real	pst
MTTGBOP1U	Tgt BOP Reg+Promo U	real	pst
MTTGBOP2C	Tgt BOP Clr C	real	pst
MTTGBOP2U	Tgt BOP Clr U	real	pst
MTTGBOPC	Tgt BOP C	real	pst
MTTGBOPU	Tgt BOP U	real	pst
MTTGConsInvC	Tgt Cons Inv C	real	total
MTTGEOP1C	Tgt EOP Reg+Promo C	real	pet
MTTGEOP1U	Tgt EOP Reg+Promo U	real	pet
MTTGEOP2C	Tgt EOP Clr C	real	pet
MTTGEOP2U	Tgt EOP Clr U	real	pet
MTTGEOPC	Tgt EOP C	real	pet
MTTGEOPU	Tgt EOP U	real	pet
MTTGGMR	Tgt GM R	real	total
MTTGInvAdjC	Tgt Inv Adj C	real	total
MTTGInvAdjU	Tgt Inv Adj U	real	total
MTTGMiscAdjC	Tgt Misc Adj C	real	total
MTTGMiscAdjU	Tgt Misc Adj U	real	total
MTTGMkd1R	Tgt Markdown Reg+Promo R	real	total
MTTGMkd2R	Tgt Markdown Clr R	real	total
MTTGMkdR	Tgt Markdown R	real	total
MTTGMkdWFR	Tgt Markdown due to W/F R	real	total
MTTGMOCC	Tgt Move to Clr C	real	total
MTTGMOCU	Tgt Move to Clr U	real	total
MTTGMOSC	Tgt MOS C	real	total
MTTGMOSU	Tgt MOS U	real	total
MTTGNMGR	Tgt Net GM R	real	total
MTTGNSls1C	Tgt Net Sales Reg+Promo C	real	total
MTTGNSls1R	Tgt Net Sales Reg+Promo R	real	total

Table A-16 (Cont.) MFP Cost Cloud Service Merch Target - Target Plan Export Measures

Measure	Measure Label	Data Type	Aggregation Type
MTTGNSls1U	Tgt Net Sales Reg+Promo U	real	total
MTTGNSls2C	Tgt Net Sales Clr C	real	total
MTTGNSls2R	Tgt Net Sales Clr R	real	total
MTTGNSls2U	Tgt Net Sales Clr U	real	total
MTTGNSlsC	Tgt Net Sales C	real	total
MTTGNSlsR	Tgt Net Sales R	real	total
MTTGNSlsU	Tgt Net Sales U	real	total
MTTGRcptC	Tgt Receipts C	real	total
MTTGRcptU	Tgt Receipts U	real	total
MTTGRoyalR	Tgt Royalties R	real	total
MTTGRtn1R	Tgt Returns Reg+Promo R	real	total
MTTGRtn1U	Tgt Returns Reg+Promo U	real	total
MTTGRtn2R	Tgt Returns Clr R	real	total
MTTGRtn2U	Tgt Returns Clr U	real	total
MTTGRtnR	Tgt Returns R	real	total
MTTGRtnU	Tgt Returns U	real	total
MTTGShrkC	Tgt Shrink C	real	total
MTTGShrkU	Tgt Shrink U	real	total
MTTGSls1R	Tgt Sales Reg+Promo R	real	total
MTTGSls1U	Tgt Sales Reg+Promo U	real	total
MTTGSls2R	Tgt Sales Clr R	real	total
MTTGSls2U	Tgt Sales Clr U	real	total
MTTGSlsCmpR	Tgt Comp Sales R	real	total
MTTGSlsNCpR	Tgt Non-Comp Sales R	real	total
MTTGSlsR	Tgt Sales R	real	total
MTTGSlsU	Tgt Sales U	real	total
MTTGVndFndR	Tgt Vendor Funds R	real	total
MTTGWFMkDR	Tgt W/F Markdown R	real	total
MTTGWFMkUR	Tgt W/F Markup R	real	total

MFP Cost Cloud Service Merch Target - Working Plan Export

Export Version Name: Merch Target - Working Plan

Export Version: mtwp

Export Mask Measure: MT Wp Export

Exported File: export_mtwp.dat

Table A-17 MFP Cost Cloud Service Merch Target - Working Plan Export Measures

Measure	Measure Label	Data Type	Aggregation Type
week	Week	NA	NA
dept	Department	NA	NA
chnl	Channel	NA	NA
MTWPBOP1C	Wp BOP Reg+Promo C	real	pst
MTWPBOP1U	Wp BOP Reg+Promo U	real	pst
MTWPBOP2C	Wp BOP Clr C	real	pst
MTWPBOP2U	Wp BOP Clr U	real	pst
MTWPBOPC	Wp BOP C	real	pst
MTWPBOPU	Wp BOP U	real	pst
MTWPConsInvC	Wp Cons Inv C	real	total
MTWPEOP1C	Wp EOP Reg+Promo C	real	pet
MTWPEOP1U	Wp EOP Reg+Promo U	real	pet
MTWPEOP2C	Wp EOP Clr C	real	pet
MTWPEOP2U	Wp EOP Clr U	real	pet
MTWPEOPC	Wp EOP C	real	pet
MTWPEOPU	Wp EOP U	real	pet
MTWPGMR	Wp GM R	real	total
MTWPInvAdjC	Wp Inv Adj C	real	total
MTWPInvAdjU	Wp Inv Adj U	real	total
MTWPMiscAdjC	Wp Misc Adj C	real	total
MTWPMiscAdjU	Wp Misc Adj U	real	total
MTWPMkd1R	Wp Markdown Reg+Promo R	real	total
MTWPMkd2R	Wp Markdown Clr R	real	total
MTWPMkdR	Wp Markdown R	real	total
MTWPMkdWFR	Wp Markdown due to W/F R	real	total
MTWPMOCC	Wp Move to Clr C	real	total
MTWPMOCU	Wp Move to Clr U	real	total
MTWPMOSC	Wp MOS C	real	total
MTWPMOSU	Wp MOS U	real	total
MTWPNGMR	Wp Net GM R	real	total
MTWPNSls1C	Wp Net Sales Reg+Promo C	real	total
MTWPNSls1R	Wp Net Sales Reg+Promo R	real	total
MTWPNSls1U	Wp Net Sales Reg+Promo U	real	total

Table A-17 (Cont.) MFP Cost Cloud Service Merch Target - Working Plan Export

Measure	Measure Label	Data Type	Aggregation Type
MTWPNSIs2C	Wp Net Sales Clr C	real	total
MTWPNSIs2R	Wp Net Sales Clr R	real	total
MTWPNSIs2U	Wp Net Sales Clr U	real	total
MTWPNSIsC	Wp Net Sales C	real	total
MTWPNSIsR	Wp Net Sales R	real	total
MTWPNSIsU	Wp Net Sales U	real	total
MTWPRcptC	Wp Receipts C	real	total
MTWPRcptU	Wp Receipts U	real	total
MTWPRoyalR	Wp Royalties R	real	total
MTWPRtn1R	Wp Returns Reg+Promo R	real	total
MTWPRtn1U	Wp Returns Reg+Promo U	real	total
MTWPRtn2R	Wp Returns Clr R	real	total
MTWPRtn2U	Wp Returns Clr U	real	total
MTWPRtnR	Wp Returns R	real	total
MTWPRtnU	Wp Returns U	real	total
MTWPShrkC	Wp Shrink C	real	total
MTWPShrkU	Wp Shrink U	real	total
MTWPSIs1R	Wp Sales Reg+Promo R	real	total
MTWPSIs1U	Wp Sales Reg+Promo U	real	total
MTWPSIs2R	Wp Sales Clr R	real	total
MTWPSIs2U	Wp Sales Clr U	real	total
MTWPSIsCmpR	Wp Comp Sales R	real	total
MTWPSIsNCpR	Wp Non-Comp Sales R	real	total
MTWPSIsR	Wp Sales R	real	total
MTWPSIsU	Wp Sales U	real	total
MTWPVndFndR	Wp Vendor Funds R	real	total
MTWPWFMkDR	Wp W/F Markdown R	real	total
MTWPWFMkUR	Wp W/F Markup R	real	total
MTWPOOAdjC	Wp On Order Adj C	real	total
MTWPOOAdjU	Wp On Order Adj U	real	total
MTWPOOC	Wp On Order C	real	total
MTWPOOU	Wp On Order U	real	total

MFP Cost Cloud Service Location Plan - Current Plan Export

Export Version Name: Location Plan - Current Plan

Export Version: lpcp

Export Mask Measure: LP Cp Export

Exported File: export_lpcp.dat

Table A-18 MFP Cost Cloud Service Location Plan - Current Plan Export Measures

Measure	Measure Label	Data Type	Aggregation Type
week	Week	NA	NA
dept	Department	NA	NA
stor	Location	NA	NA
LPCPBOPC	Cp BOP C	real	pst
LPCPBOPU	Cp BOP U	real	pst
LPCPEOPC	Cp EOP C	real	pet
LPCPEOPU	Cp EOP U	real	pet
LPCPMkdR	Cp Markdown R	real	total
LPCPMkdWFR	Cp Markdown due to W/F R	real	total
LPCPNSIsC	Cp Net Sales C	real	total
LPCPNSIsR	Cp Net Sales R	real	total
LPCPNSIsU	Cp Net Sales U	real	total
LPCPRcptC	Cp Receipts C	real	total
LPCPRcptU	Cp Receipts U	real	total
LPCPRtnR	Cp Returns R	real	total
LPCPRtnU	Cp Returns U	real	total
LPCPShrkC	Cp Shrink C	real	total
LPCPShrkU	Cp Shrink U	real	total
LPCPSIsR	Cp Sales R	real	total
LPCPSIsU	Cp Sales U	real	total
LPCPTranIOC	Cp Transfers In/Out C	real	total
LPCPTranIOU	Cp Transfers In/Out U	real	total
LPCPWFmKDR	Cp W/F Markdown R	real	total
LPCPWFmKUR	Cp W/F Markup R	real	total

MFP Cost Cloud Service Location Plan - Original Plan Export

Export Version Name: Location Plan - Original Plan

Export Version: lpop

Export Mask Measure: LP Op Export

Exported File: export_lpop.dat

Table A-19 MFP Cost Cloud Service Location Plan - Original Plan Export Measures

Measure	Measure Label	Data Type	Aggregation Type
week	Week	NA	NA

Table A-19 (Cont.) MFP Cost Cloud Service Location Plan - Original Plan Export

Measure	Measure Label	Data Type	Aggregation Type
dept	Department	NA	NA
stor	Location	NA	NA
LPOPBOPC	Op BOP C	real	pst
LPOPBOPU	Op BOP U	real	pst
LPOPEOPC	Op EOP C	real	pet
LPOPEOPU	Op EOP U	real	pet
LPOPmkdR	Op Markdown R	real	total
LPOPmkdWFR	Op Markdown due to W/F R	real	total
LPOPNSIsC	Op Net Sales C	real	total
LPOPNSIsR	Op Net Sales R	real	total
LPOPNSIsU	Op Net Sales U	real	total
LPOP RcptC	Op Receipts C	real	total
LPOP RcptU	Op Receipts U	real	total
LPOP RtnR	Op Returns R	real	total
LPOP RtnU	Op Returns U	real	total
LPOPShrkC	Op Shrink C	real	total
LPOPShrkU	Op Shrink U	real	total
LPOPSIsR	Op Sales R	real	total
LPOPSIsU	Op Sales U	real	total
LPOPTranIOC	Op Transfers In/Out C	real	total
LPOPTranIOU	Op Transfers In/Out U	real	total
LPOPWFMkDR	Op W/F Markdown R	real	total
LPOPWFMkUR	Op W/F Markup R	real	total

MFP Cost Cloud Service Location Plan - Working Plan Export

Export Version Name: Location Plan - Working Plan

Export Version: lpwp

Export Mask Measure: LP Wp Export

Exported File: export_lpwp.dat

Table A-20 MFP Cost Cloud Service Location Plan - Working Plan Export Measures

Measure	Measure Label	Data Type	Aggregation Type
week	Week	NA	NA
dept	Department	NA	NA

Table A-20 (Cont.) MFP Cost Cloud Service Location Plan - Working Plan Export

Measure	Measure Label	Data Type	Aggregation Type
stor	Location	NA	NA
LPWPBOPC	Wp BOP C	real	pst
LPWPBOPU	Wp BOP U	real	pst
LPWPEOPC	Wp EOP C	real	pet
LPWPEOPU	Wp EOP U	real	pet
LPWPMkdR	Wp Markdown R	real	total
LPWPMkdWFR	Wp Markdown due to W/F R	real	total
LPWPNSIsC	Wp Net Sales C	real	total
LPWPNSIsR	Wp Net Sales R	real	total
LPWPNSIsU	Wp Net Sales U	real	total
LPWPRcptC	Wp Receipts C	real	total
LPWPRcptU	Wp Receipts U	real	total
LPWPRtnR	Wp Returns R	real	total
LPWPRtnU	Wp Returns U	real	total
LPWPShrkC	Wp Shrink C	real	total
LPWPShrkU	Wp Shrink U	real	total
LPWPSIsR	Wp Sales R	real	total
LPWPSIsU	Wp Sales U	real	total
LPWPTranIOC	Wp Transfers In/Out C	real	total
LPWPTranIOU	Wp Transfers In/Out U	real	total
LPWPWFmKDR	Wp W/F Markdown R	real	total
LPWPWFmKUR	Wp W/F Markup R	real	total
LPWPOOAdjC	Wp On Order Adj C	real	total
LPWPOOAdjU	Wp On Order Adj U	real	total
LPWPOOC	Wp On Order C	real	total
LPWPOOU	Wp On Order U	real	total

MFP Cost Cloud Service Location Target - Target Plan Export

Export Version Name: Location Target - Target Plan

Export Version: lttg

Export Mask Measure: LT Tgt Export

Exported File: export_lttg.dat

Table A-21 MFP Cost Cloud Service Location Target - Target Plan Export Measures

Measure	Measure Label	Data Type	Aggregation Type
week	Week	NA	NA
cmp	Company	NA	NA

Table A-21 (Cont.) MFP Cost Cloud Service Location Target - Target Plan Export

Measure	Measure Label	Data Type	Aggregation Type
stor	Location	NA	NA
LTTGGMRp	Tgt GM R %	real	average
LTTGNSlsR	Tgt Net Sales R	real	total
LTTGNSlsU	Tgt Net Sales U	real	total
LTTGRtnR	Tgt Returns R	real	total
LTTGRtnU	Tgt Returns U	real	total
LTTGSlsR	Tgt Sales R	real	total
LTTGSlsU	Tgt Sales U	real	total

MFP Cost Cloud Service Location Target - Working Plan Export

Export Version Name: Location Target - Working Plan

Export Version: ltwp

Export Mask Measure: LT Wp Export

Exported File: export_ltwp.dat

Table A-22 MFP Cost Cloud Service Location Target - Working Plan Export Measures

Measure	Measure Label	Data Type	Aggregation Type
week	Week	NA	NA
cmpp	Company	NA	NA
stor	Location	NA	NA
LTWPGMRp	Wp GM R %	real	average
LTWPNSlsR	Wp Net Sales R	real	total
LTWPNSlsU	Wp Net Sales U	real	total
LTWPRtnR	Wp Returns R	real	total
LTWPRtnU	Wp Returns U	real	total
LTWPSlsR	Wp Sales R	real	total
LTWPSlsU	Wp Sales U	real	total

MFP Cloud Service Integration with RI

MFP Cloud Service integrates with Oracle Retail Insights (RI) to export the approved Original and Current Merch Plans.

This section covers the details of the exports, list of measures exported, and the format.

All approved Merch Plans (CP and OP) for all the unelapsed weeks are exported to RI during each export at the Sub-Class/Channel/Week Level.

The retailer can either implement MFP Retail Cloud Service or MFP Cost Cloud Service. The RI staging table loads data from both Retail and Cost into a single staging table; a file with the same name is extracted from MFP Cloud Service but only with the required columns data for Retail and Cost. The list of measures that are extracted and

that need to be loaded into the RI staging table are specified in following CTX files. The files are present in the MFP Cloud Service install package under the bin directory:

- W_RTL_MFPOP_PROD1_LC1_T1_FS.dat.ctx
- W_RTL_MFPCP_PROD1_LC1_T1_FS.dat.ctx

These need to be provided to RI during implementation so that RI can integrate with MFP Retail Cloud Service or MFP Cost Cloud Service.

The following two files are exported and compressed into a single file named RI_MFP_DATA.zip. It is copied to the common Cloud Service applications share location \$RBU_CLOUD_DATA from where RI can access the files:

- W_RTL_MFPOP_PROD1_LC1_T1_FS.dat
- W_RTL_MFPCP_PROD1_LC1_T1_FS.dat

The interface can be scheduled to run on a daily or weekly basis by scheduling the respective Export to RA task in the Online Admin Tools.

MFP Retail Cloud Service to RI - Original Plan

Exported File: W_RTL_MFPOP_PROD1_LC1_T1_FS.dat

Table A-23 MFP Retail Cloud Service to RI - Original Plan Measures

Measure	Measure Label	Data Type	RI Staging Table Column	RI Required Format
Subclass	Subclass	String	PROD_DH_NUM	dept~class~subclass
Channel	Channel	String	ORG_DH_NUM	
DRDVLDDWD	Last Date of Week	Date	CAL_DATE	YYYY-MM-DD;HH24:MI:SS
		String	PLANNING_TYPE_CODE	String (Retail)
MPOPSls2R	Op Sales Clr R	Real	MFPOPR_SLSCCL_RTL_AMT	Real
MPOPSls2U	Op Sales Clr U	Real	MFPOPR_SLSCCL_QTY	Integer
MPOPVATR	Op VAT R	Real	MFPOPR_TAX_RTL_AMT	Real
MPOPNSlsR	Op Net Sales R	Real	MFPOPR_SLSTE_RTL_AMT	Real
MPOPGMR	Op GM R	Real	MFPOPR_MARGIN_RTL_AMT	Real
MPOPCOGSC	Op COGS C	Real	MFPOPR_COGS_COST_AMT	Real
MPOPMkd2R	Op Markdown Clr R	Real	MFPOPR_MKDNCL_RTL_AMT	Real
MPOPBOPC	Op BOP C	Real	MFPOPR_BOH_COST_AMT	Real
MPOPBOPR	Op BOP R	Real	MFPOPR_BOH_RTL_AMT	Real
MPOPBOPU	Op BOP U	Real	MFPOPR_BOH_QTY	Integer
MPOPEOPC	Op EOP C	Real	MFPOPR_EOH_COST_AMT	Real
MPOPEOPR	Op EOP R	Real	MFPOPR_EOH_RTL_AMT	Real
MPOPEOPU	Op EOP U	Real	MFPOPR_EOH_QTY	Integer
MPOPrcptC	Op Receipts C	Real	MFPOPR_INVRC_COST_AMT	Real
MPOPrcptR	Op Receipts R	Real	MFPOPR_INVRC_RTL_AMT	Real

Table A-23 (Cont.) MFP Retail Cloud Service to RI - Original Plan Measures

Measure	Measure Label	Data Type	RI Staging Table Column	RI Required Format
MPOPRcptU	Op Receipts U	Real	MFPOPR_INVRC_QTY	Integer
MPOPShrkR	Op Shrink R	Real	MFPOPR_SHRINK_RTL_AMT	Real
MPOPShrkU	Op Shrink U	Real	MFPOPR_SHRINK_QTY	Integer
MPOPMiscAdjR	Op Misc Adj R	Real	MFPOPR_MISCI_RTL_AMT	Real
MPOPMiscAdjU	Op Misc Adj U	Real	MFPOPR_MISCI_QTY	Integer
		Real	DATASOURCE_NUM_ID	Integer
		String	INTEGRATION_ID	dept~class~subclass~channel~week value
MPOPSls1R	Op Sales Reg+Promo R	Real	MFPOPR_SLSRGPRO_RTL_AMT	Real
MPOPSls1U	Op Sales Reg+Promo U	Real	MFPOPR_SLSRGPRO_QTY	Integer
MPOPMkd1R	Op Markdown Reg+Promo R	Real	MFPOPR_MKDNPMPRO_RTL_AMT	Real

MFP Retail Cloud Service to RI - Current Plan

Exported File: W_RTL_MFPCP_PROD1_LC1_T1_FS.dat

Table A-24 MFP Retail Cloud Service to RI - Current Plan Measures

Measure	Measure Label	Data Type	RI Staging Table Column	RI Required Format
Subclass	Subclass	String	PROD_DH_NUM	dept~class~subclass
Channel	Channel	String	ORG_DH_NUM	
DRDVLDOWD	Last Date of Week	Date	CAL_DATE	YYYY-MM-DD;HH24:MI:SS
		String	PLANNING_TYPE_CODE	String (Retail)
MPOPSls2R	Cp Sales Clr R	Real	MFPCPR_SLSC_L_RTL_AMT	Real
MPOPSls2U	Cp Sales Clr U	Real	MFPCPR_SLSC_L_QTY	Integer
MPOPVATR	Cp VAT R	Real	MFPCPR_TAX_RTL_AMT	Real
MPOPNSlsR	Cp Net Sales R	Real	MFPCPR_SLSTE_RTL_AMT	Real
MPOPGMR	Cp GM R	Real	MFPCPR_MARGIN_RTL_AMT	Real
MPOPCOGSC	Cp COGS C	Real	MFPCPR_COGS_COST_AMT	Real
MPOPMkd2R	Cp Markdown Clr R	Real	MFPCPR_MKDNCL_RTL_AMT	Real
MPOPBOPC	Cp BOP C	Real	MFPCPR_BOH_COST_AMT	Real
MPOPBOPR	Cp BOP R	Real	MFPCPR_BOH_RTL_AMT	Real
MPOPBOPU	Cp BOP U	Real	MFPCPR_BOH_QTY	Integer
MPOPEOPC	Cp EOP C	Real	MFPCPR_EOH_COST_AMT	Real
MPOPEOPR	Cp EOP R	Real	MFPCPR_EOH_RTL_AMT	Real

Table A-24 (Cont.) MFP Retail Cloud Service to RI - Current Plan Measures

Measure	Measure Label	Data Type	RI Staging Table Column	RI Required Format
MPOPEOPU	Cp EOP U	Real	MFPCPR_EOH_QTY	Integer
MPOPRcptC	Cp Receipts C	Real	MFPCPR_INVRC_COST_AMT	Real
MPOPRcptR	Cp Receipts R	Real	MFPCPR_INVRC_RTL_AMT	Real
MPOPRcptU	Cp Receipts U	Real	MFPCPR_INVRC_QTY	Integer
MPOPShrkR	Cp Shrink R	Real	MFPCPR_SHRINK_RTL_AMT	Real
MPOPShrkU	Cp Shrink U	Real	MFPCPR_SHRINK_QTY	Integer
MPOPMiscAdjR	Cp Misc Adj R	Real	MFPCPR_MISCI_RTL_AMT	Real
MPOPMiscAdjU	Cp Misc Adj U	Real	MFPCPR_MISCI_QTY	Integer
		Real	DATASOURCE_NUM_ID	Integer
		String	INTEGRATION_ID	dept~class~subclass~channel~week value
MPOPSls1R	Cp Sales Reg+Promo R	Real	MFPCPR_SLSRGPRO_RTL_AMT	Real
MPOPSls1U	Cp Sales Reg+Promo U	Real	MFPCPR_SLSRGPRO_QTY	Integer
MPOPMkd1R	Cp Markdown Reg+Promo R	Real	MFPCPR_MKDNPMPRO_RTL_AMT	Real

MFP Cost Cloud Service to RI - Original Plan

Exported File: W_RTL_MFPOP_PROD1_LC1_T1_FS.dat

Table A-25 MFP Cost Cloud Service to RI - Original Plan Measures

Measure	Measure Label	Data Type	RI Staging Table Column	RI Required Format
week	Week	Number	PROD_DH_NUM	dept~class~subclass
scls	Subclass	String	ORG_DH_NUM	
DRDVLDDWD	Last Date of Week	Number	CAL_DATE	
		String	PLANNING_TYPE_CODE	String (Cost)
MPOPSlsU	Op Sales U	Real	MFPOPC_SLS_QTY	Real
MPOPSlsR	Op Sales R	Real	MFPOPC_SLS_RTL_AMT	Integer
MPOPNSlsC	Op Sales C	Real	MFPOPC_SLS_COST_AMT	Real
MPOPVATR	Op VAT R	Real	MFPOPC_TAX_RTL_AMT	Real
MPOPNSlsR	Op Net Sales R	Real	MFPOPC_SLSTE_RTL_AMT	Real
MPOPGMR	Op GM R	Real	MFPOPC_PROF_COST_AMT	Real
MPOPBOPC	Op BOP C	Real	MFPOPC_BOH_COST_AMT	Real
MPOPBOPU	Op BOP U	Real	MFPOPC_BOH_QTY	Real
MPOPEOPC	Op EOP C	Real	MFPOPC_EOH_COST_AMT	Real
MPOPEOPU	Op EOP U	Real	MFPOPC_EOH_QTY	Integer

Table A-25 (Cont.) MFP Cost Cloud Service to RI - Original Plan Measures

Measure	Measure Label	Data Type	RI Staging Table Column	RI Required Format
MPOPRcptC	Op Receipts C	Real	MFPOPC_INVRC_COST_AMT	Real
MPOPRcptU	Op Receipts U	Real	MFPOPC_INVRC_QTY	Real
MPOPShrkC	Op Shrink C	Real	MFPOPC_SHRINK_COST_AMT	Integer
MPOPShrkU	Op Shrink U	Real	MFPOPC_SHRINK_QTY	Real
MPOPMiscAdjC	Op Misc Adj C	Real	MFPOPC_MISCI_COST_AMT	Real
MPOPMiscAdjU	Op Misc Adj U	Real	MFPOPC_MISCI_QTY	Integer
		Real	DATASOURCE_NUM_ID	Integer
		String	INTEGRATION_ID	dept~class~subclass~channel~week value

MFP Cost Cloud Service to RI - Current Plan

Exported File: W_RTL_MFPCP_PROD1_LC1_T1_FS.dat

Table A-26 MFP Cost Cloud Service to RI - Current Plan Measures

Measure	Measure Label	Data Type	RI Staging Table Column	RI Required Format
week	Week	Number	PROD_DH_NUM	dept~class~subclass
scls	Subclass	String	ORG_DH_NUM	
DRDVLDDOWD	Last Date of Week	Number	CAL_DATE	
		String	PLANNING_TYPE_CODE	String (Cost)
MPCPSlsU	Cp Sales U	Real	MFPCPC_SLS_QTY	Real
MPCPSlsR	Cp Sales R	Real	MFPCPC_SLS_RTL_AMT	Integer
MPCPNSlsC	Cp Sales C	Real	MFPCPC_SLS_COST_AMT	Real
MPCPVATR	Cp VAT R	Real	MFPCPC_TAX_RTL_AMT	Real
MPCPNSlsR	Cp Net Sales R	Real	MFPCPC_SLSTE_RTL_AMT	Real
MPCPGMR	Cp GM R	Real	MFPCPC_PROF_COST_AMT	Real
MPCPBOPC	Cp BOP C	Real	MFPCPC_BOH_COST_AMT	Real
MPCPBOPU	Cp BOP U	Real	MFPCPC_BOH_QTY	Real
MPCPEOPC	Cp EOP C	Real	MFPCPC_EOH_COST_AMT	Real
MPCPEOPU	Cp EOP U	Real	MFPCPC_EOH_QTY	Integer
MPCPRcptC	Cp Receipts C	Real	MFPCPC_INVRC_COST_AMT	Real
MPCPRcptU	Cp Receipts U	Real	MFPCPC_INVRC_QTY	Real
MPCPShrkC	Cp Shrink C	Real	MFPCPC_SHRINK_COST_AMT	Integer
MPCPShrkU	Cp Shrink U	Real	MFPCPC_SHRINK_QTY	Real
MPCPMiscAdjC	Cp Misc Adj C	Real	MFPCPC_MISCI_COST_AMT	Real

Table A-26 (Cont.) MFP Cost Cloud Service to RI - Current Plan Measures

Measure	Measure Label	Data Type	RI Staging Table Column	RI Required Format
MPCPMiscAdjU	Cp Misc Adj U	Real	MFPCPC_MISCI_QTY	Integer
		Real	DATASOURCE_NUM_ID	Integer
		String	INTEGRATION_ID	dept~class~subclass~c hannel~week value

Appendix: Files Needed by OCI for Domain Build/Patch

Oracle OCI will do the implementation for a Cloud Service. The retailer needs to send a set of files to OCI to do the initial domain build or patch. This appendix describes the format of those files.

Configuration Files to Send

Oracle OCI requires the whole configuration together with the required hierarchy files and data files for the domain build. For patching, only the updated configuration file is needed.

The following files need to be sent to Oracle OCI for implementation:

1. `mfprcs.tar.gz` (if MFP Retail Cloud Service) or `mfpcscs.tar.gz` (if MFP Cost Cloud Service)

This file should be a tar and gzip of the entire configuration folder for the selected provision options.

2. `mfpcs_hiers.tar.gz`

This file should be a tar and gzip of the required hierarchies to build the initial MFP Cloud Service domain. Ensure it contains all the hierarchy files as `.hdr.csv.dat` or `.csv.dat`.

There should be no directories or folders in the `mfpcs_hiers.tar.gz` file.

3. `mfpcs_data.tar.gz`

This file should be a tar and gzip of the required data files to build the initial MFP Cloud Service domain. Ensure it contains all the data files that need to be loaded after the domain build.

There should be no directories or folders in the `mfpcs_data.tar.gz` file.

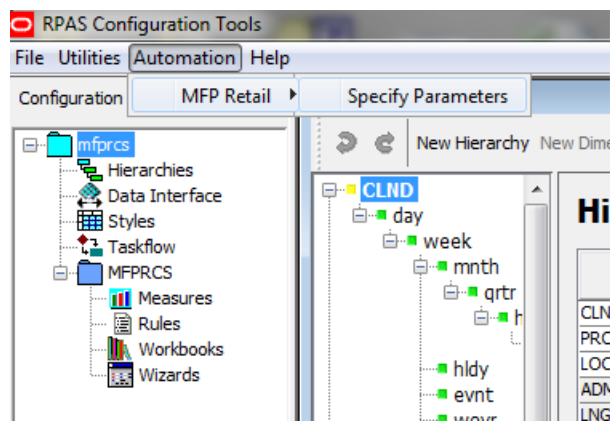
Appendix: Generating the Configuration for Plug-in Options

MFP Cloud Service supports generating different configurations using plug-in automation for different configuration options. Implementers are expected to start with the MFP Cloud Service GA configuration and run plug-in automation to generate the configuration with the required configuration options.

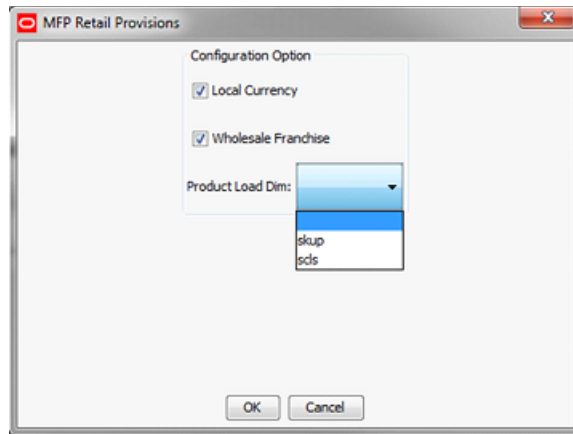
Creating the Configuration Using Plug-ins

To create the configuration using plug-ins:

1. Once the base GA configuration is copied, open the configuration using Configuration Tools.
2. From the Configuration Tools toolbar, select the Automation menu. Select the MFP Retail or MFP Cost solution and then select Specify Parameters.



3. A window opens with the available configuration options. Select the configuration options needed for the configuration by checking or un-checking each option. It also provides a drop-down option to select the lowest data load dimension for the product hierarchy as Product Load Dim with options skup (Style/Color) and sclc (Sub-Class). If none is selected, the default value of sclc is used. After selecting, click **OK**.



4. The automation will run and generate the configuration for the selected option. Save the generated configuration.

Appendix: Batch Process and Control Files

MFP Cloud Service batch operations require that the retailer administrative user, who will not have command-line server access, must be able to select, initiate, and schedule RPAS batch activities.

The RPAS platform includes an Online Administration Tool (OAT) capability, which allows simple parameterization and scheduling of pre-configured batch tasks. The OAT framework allows a sequence of several batch tasks to be defined. This sequence is built from a list of available batch services, such as measure loading, calculation, workbook refresh, and so on. These service tasks run in a defined order, so that the user can know, for example, that their daily data updates have been loaded before their workbook refresh tasks are run. The MFP Cloud Service batch tasks are configured to run under the existing OAT framework, so that scheduling them to run once, or on a repeating basis, is the same as for other OAT tasks.

The batch task sequences are defined in a small set of text files called batch control files, which are specified below, with some examples.

Batch Processes Under the Control of the Implementer

In MFP Cloud Service, the following are under implementer control:

- List of batch operations to be run, with available parameterization
- Order in which batch operations are to be run
- Scheduling of one or more recurring batch tasks (can be modified by retailer administrator, as needed)

Batch Processes Not Under the Control of the Implementer

Due to the operational and security constraints of the Cloud Service environment, the following are not under implementer control:

- Parallelization: Batch process automatically parallelizes any applicable batch tasks with a number of processes set to match the provisioned server environment.
- Script file names, file and directory locations: Custom scripting is not supported for this environment, and no knowledge of file system names or locations is necessary in defining and parameterizing the batch task files.
- Incoming and outgoing file (ftp) location: These details are fixed within the MFP Cloud Service environment.

Batch Processes Catalog

This section describes the list of batch control files and the batch script that uses them.

Batch Load: `batch_load_list.txt`

The `loadmeas.ksh` batch script allows loading of groups of measures. It is called by the Data Load OAT task and can also be called by including them in another control file such as the Batch Exec set. Groups of measures to be loaded are specified in the control file, `batch_load_list.txt`.

Following is the list of columns in the `batch_load_list` control file delimited by '|':

- Load Set Name
- Parameter type, which must be one of the following:
 - M - Measure name (at least one entry required).
 - V - To validate if all the measure files exist before the load.
 - C - To copy the files from the location specified by an environment variable to the domain input directory before running the load. Currently, only two environmental variables can be used, `INCOMING_FTP_PATH` and `RGBU_CLOUD_DATA`.

`INCOMING_SRC1_PATH` and `INCOMING_SRC2_PATH` are two additional source paths. If not set externally, `INCOMING_SRC1_PATH` is defaulted to `INCOMING_FTP_PATH` and `INCOMING_SRC2_PATH` is defaulted to `RGBU_CLOUD_DATA`.

- Measure Name (for M) and Environment Variable (for C).

Example control file:

The following example shows the setting to load three on-orders measures that need to be loaded. Before loading, they need to be copied from the common cloud share location `RGBU_CLOUD_DATA` and it needs to be validated that the files are present before the data load.

```
# load on-order measures
load_oo|M|drtyoou
load_oo|M|drtyoor
load_oo|M|drtyooc
load_oo|V|
load_oo|C|RGBU_CLOUD_DATA
```

Batch Calculations: `batch_calc_list.txt`

The `batchcalc.ksh` batch script allows running the RPAS mace utility to run a predefined set of batch calculations. It is called by the Process - Batch Calc OAT task. It can also be called by including them in another control file such the Batch Exec set. It uses a control file called `batch_calc_list.txt`. Following is the format of this file:

```
calc_list | [G or L] | [group or expression] | [group name or expr text
```

The first column provides an identifier for each group of calc instructions. These identifiers are used to select calculations to be run either directly, or as part of a Batch Exec run. (The identifiers can match the Batch Exec identifier, but this is not required.) The second column specifies whether this calculation is to be run in the (G)lobal domain on across all (L)ocal domains. The third column indicates whether the calculation to be run is a registered rule group or an individual expression. The final

column provides either the name of the rule group to be executed or the text of the expression to be run.

As with the other control files, any line starting with # is ignored and can be used to comment or document the file, as needed.

Following is an example file for the calculation service:

```
# Calc Set for Batch Aggregation Weekly batch_week | G | group | Batch_GB batch_
week | L | group | Batch_AggW batch_week | L | group | Batch_InvRoll
batch_week | G | expression | LTWPNSlsR = DRTYNSls1R+DRTYNSls2R
batch_week | G | expression | LTWPNSlsU = DRTYSls1U+DRTYSls2U-DRTYRtn1U-DRTYRtn2U

# Calc Set for Generating Forecast batch_fcst | G | group | Batch_Fcst_G batch_
fcst | L | group | Batch_Fcst_L
```

Export Measures: batch_export_list.txt

The batchexport.ksh scripts allows the flat-file export of one or more measures, using a control file, batch_export_list.txt, to group (and parameterize) the measure lists for particular export operations. It is called by the Export - Plan Data OAT task. It can also be called by including them in another control file such as the Batch Exec set. The format of the control file is a bit complicated, as several types of instructions or parameters can be associated with each export group.

Following are the columns in the export control file:

- Export Set Name
- Parameter type, which must be one of the following:
 - M - Measure name (at least one entry required)
 - F - Filter mask measure
 - X - Base intersection (F or X is required)
 - O - Output file name (optional). If not provided, it will create under domain/output with name export_<export_set>.dat
 - C - Copy output file from output directory to another directory
 - M - Move output file from output directory to another directory
 - I - Output individual files (optional). If a user wants to create each individual measure as a separate file in an export set.
 - D - Delimiter (optional)
 - If PIPE is the delimiter, it will actually use the | character.
- Parameter value (relative to the parameter type selected above).
- Measure Format Name (Optional) (It is the valid format name from measure_format_list.txt).

Example control file:

Following is an example control file for the Export Data:

```
# Export Loc Target
lttg|F|lttgexportb
lttg|M|lttgmkdr
lttg|M|lttgnslsr
lttg|M|lttgnslsu
lttg|M|lttgrtnr
```

```
littg|M|littgrtnu  
littg|M|littgslsr  
littg|M|littgslsu
```

measure_format_list.txt

The batchexport.ksh scripts also use another control file, measure_format_list.txt, which maintains the different measure formats.

Parameters should be separated by | and no spaces. Each line should have:

- Measure format name
- Format string (as specified by exportMeasure RPAS utility)
- Precision string (as specified by exportMeasure RPAS utility)

Example:

```
Real0|%1.0f|1  
Real2|%1.2f|0.01
```

Batch Execution: batch_exec_list.txt

The batchexec.ksh is the main controller script to call multiple scripts by specifying groups of tasks to be run, their sequences, and top-level parameters. This script is called by the Process - Run Batch and Export - Plan Data OAT tasks. This script has an option to restart the process from a particular script.

It uses the control file batch_exec_list.txt. In this file, each active line takes the following form:

```
batch_type | called_script | script parameters
```

The first column is an identifier, which may be repeated on several lines to define a grouping of tasks to be run together. The second column indicates which script needs to be called. The third column gives parameter details for that task (as necessary). If more than one parameter, then those should be delimited with "~". Comments may be placed in the batch_exec_list.txt file by starting a comment line with the hash sign (#).

Example:

Following is an example batch_exec_list.txt file for reference:

```
# Daily Batch Cycle  
daily | batchcalc.ksh | exp_set  
daily | batchexport.ksh | mttg  
daily | batchexport.ksh | mpop  
daily | batchexport.ksh | mpcp  
daily | batchexport.ksh | mpwa  
daily | batchexport.ksh | littg  
daily | batchexport.ksh | lpop  
daily | batchexport.ksh | lpcp  
daily | batchtrigger.ksh | INCOMING_SRC1_PATH-mfp_data.complete  
daily | loadmeas.ksh | load_oo  
daily | batchcalc.ksh | batch_oo  
  
# Batch Cycle to Load 00  
load_oo | loadmeas.ksh | load_oo  
load_oo | batchcalc.ksh | batch_oo  
  
# Export All Working Plan Data  
exp_work | batchcalc.ksh | exp_set
```

```
exp_work | batchexport.ksh | mtwp
exp_work | batchexport.ksh | mpwp
exp_work | batchexport.ksh | ltwp
exp_work | batchexport.ksh | lpwp
```

In this example file, three batch task groups are specified: daily, load_oo, and exp_work. Note that these names are implementer-defined identifiers; there is nothing special about the names daily or weekly. Each identifier is thus associated with a sequence of tasks, which will run in the order they are listed in the file.

Note also that no information is provided about times or schedules on which these task groups should be run. This information is specified in the RPAS Online Administration Tool.

The scripts listed for each batch task group are run in the order specified when that type of batch run is requested through the OAT interface.

The list of scripts and their parameters that are available to be used are listed in the following table:

Batch Script	Purpose	Parameters
loadhier.ksh	To load the hierarchy files	<Hierarchy Name> <Purge Age> <withUDD(Y/N)>
loadmeas.ksh	To load the set of measures	<Measure Set Name>
batchcalc.ksh	To run batch calculations	<Batch Calc Set Name>
batchexport.ksh	To export the set of measures	<Batch Export Set Name>
batchtrigger.ksh	To wait for the trigger file passed as a parameter	<Trigger File Path> <Trigger File Name>
refresh.ksh	To refresh workbooks in batch	
autobuild.ksh	To run auto-workbook builds in batch	

Batch Online Admin Tasks Pick List: batch_oat_plist.txt

The Online Admin tool MFP Admin tasks in MFP Cloud Service uses dynamic pick-lists for different options for a task. A new task cannot be added, but existing tasks pick-lists can be changed. The list of options for the pick-lists is present in the control file batch_oat_plist.txt. This control file can be updated to add or remove options in the pick-list for the existing OAT tasks.

It uses control file called batch_oat_plist.txt. Following is the format of this file:

```
Pick-list Set Name | Pick-list Option Value | Pick-list Option Label
```

- Pick-list Set Name: Those names should not be changed as those are linked to specific OAT tasks.
- Pick-list Option Value: This is the corresponding set name used in that specific tasks batch control file.
- Pick-list Option Label: The Pick-list Option Label shown to users in Online Admin Tools.

Examples:

```
# Batch Calculation Picklist
```

```
batch_calc|batch_week|Process Actuals
batch_calc|batch_fcst|Run Generate Forecast
batch_calc|exp_set|Set Export Flags

# Load data Picklist
load_data|load_act|Load Actuals
load_data|load_oo|Load On Order
load_data|load_adm|Load Admin
```

Process to Change Batch Control Files

The starter kit contains the list of batch control files used in the MFP Cloud Service package. An implementer can make changes to any of the above batch control files, but should name them with the extension .ctl and upload the files using the standard SFTP process in Online Admin Tools. That process will copy the *.ctl files to the override control file directory.

Uploaded *.ctl files will not be updated during an upgrade or patch process. So the implementer or retailer needs to maintain changes to those *.ctl files during a patch or upgrade.

It is recommended to make minor changes to control files to avoid changes during each upgrade or patch process.

To simplify the process, rather than editing all the sets in a control file, users can only override the set that they want to modify in a control file and only use that set in their new control file.

Examples

In the batch_load_list.txt control file, it currently contains the following data for loading On Order measures:

```
# load on-order measures
load_oo|M|drtyoou
load_oo|M|drtyoor
load_oo|M|drtyooc
```

If a retailer wants to load only two measures, drtyoou and drtyoor, validate file presence, and load them from the cloud share location, the retailer can edit only the load_oo set name in the new control file with the name batch_load_list.ctl with only the following content:

```
# load on-order measures
load_oo|M|drtyoou
load_oo|M|drtyoor
load_oo|V|
load_oo|C|RGBU_CLOUD_DATA
```

The retailer does not have to copy the contents of other load sets into this control file. Each batch process will look for the control set names first in the override control file. If they are not present, it will look for them in the default base control files. During an upgrade or patch process, even if other load sets got changed during the patch process, it will not be impacted by the presence of override control files.

There is no process to delete the override control file, so users can upload an empty *.ctl file if they have already uploaded it. Since the override control file will be empty, the batch process will use the base control files.