

**Oracle® Retail Merchandise Financial Planning
Cloud Service**

Starter Kit

Release 21.0

F48822-03

February 2022

Oracle Retail Merchandise Financial Planning Cloud Service Starter Kit, Release 21.0

F48822-03

Copyright © 2022, Oracle and/or its affiliates. All rights reserved.

Primary Author: Eric Bloemek, Venkat Thiyagarajan

Contributing Author: Kiran Kumar Shetty, Anoop Mohan, Melissa Artley

This software and related documentation are provided under a license agreement containing restrictions on use and disclosure and are protected by intellectual property laws. Except as expressly permitted in your license agreement or allowed by law, you may not use, copy, reproduce, translate, broadcast, modify, license, transmit, distribute, exhibit, perform, publish, or display any part, in any form, or by any means. Reverse engineering, disassembly, or decompilation of this software, unless required by law for interoperability, is prohibited.

The information contained herein is subject to change without notice and is not warranted to be error-free. If you find any errors, please report them to us in writing.

If this is software or related documentation that is delivered to the U.S. Government or anyone licensing it on behalf of the U.S. Government, then the following notice is applicable:

U.S. GOVERNMENT END USERS: Oracle programs, including any operating system, integrated software, any programs installed on the hardware, and/or documentation, delivered to U.S. Government end users are "commercial computer software" pursuant to the applicable Federal Acquisition Regulation and agency-specific supplemental regulations. As such, use, duplication, disclosure, modification, and adaptation of the programs, including any operating system, integrated software, any programs installed on the hardware, and/or documentation, shall be subject to license terms and license restrictions applicable to the programs. No other rights are granted to the U.S. Government.

This software or hardware is developed for general use in a variety of information management applications. It is not developed or intended for use in any inherently dangerous applications, including applications that may create a risk of personal injury. If you use this software or hardware in dangerous applications, then you shall be responsible to take all appropriate fail-safe, backup, redundancy, and other measures to ensure its safe use. Oracle Corporation and its affiliates disclaim any liability for any damages caused by use of this software or hardware in dangerous applications.

Oracle and Java are registered trademarks of Oracle and/or its affiliates. Other names may be trademarks of their respective owners.

Intel and Intel Xeon are trademarks or registered trademarks of Intel Corporation. All SPARC trademarks are used under license and are trademarks or registered trademarks of SPARC International, Inc. AMD, Opteron, the AMD logo, and the AMD Opteron logo are trademarks or registered trademarks of Advanced Micro Devices. UNIX is a registered trademark of The Open Group.

This software or hardware and documentation may provide access to or information about content, products, and services from third parties. Oracle Corporation and its affiliates are not responsible for and expressly disclaim all warranties of any kind with respect to third-party content, products, and services unless otherwise set forth in an applicable agreement between you and Oracle. Oracle Corporation and its affiliates will not be responsible for any loss, costs, or damages incurred due to your access to or use of third-party content, products, or services, except as set forth in an applicable agreement between you and Oracle.

Value-Added Reseller (VAR) Language

Oracle Retail VAR Applications

The following restrictions and provisions only apply to the programs referred to in this section and licensed to you. You acknowledge that the programs may contain third party software (VAR applications) licensed to Oracle. Depending upon your product and its version number, the VAR applications may include:

- (i) the **MicroStrategy** Components developed and licensed by MicroStrategy Services Corporation (MicroStrategy) of McLean, Virginia to Oracle and imbedded in the MicroStrategy for Oracle Retail Data Warehouse and MicroStrategy for Oracle Retail Planning & Optimization applications.
- (ii) the **Wavelink** component developed and licensed by Wavelink Corporation (Wavelink) of Kirkland, Washington, to Oracle and imbedded in Oracle Retail Mobile Store Inventory Management.
- (iii) the software component known as **Access Via**™ licensed by Access Via of Seattle, Washington, and imbedded in Oracle Retail Signs and Oracle Retail Labels and Tags.
- (iv) the software component known as **Adobe Flex**™ licensed by Adobe Systems Incorporated of San Jose, California, and imbedded in Oracle Retail Promotion Planning & Optimization application.

You acknowledge and confirm that Oracle grants you use of only the object code of the VAR Applications. Oracle will not deliver source code to the VAR Applications to you. Notwithstanding any other term or condition of the agreement and this ordering document, you shall not cause or permit alteration of any VAR

Applications. For purposes of this section, "alteration" refers to all alterations, translations, upgrades, enhancements, customizations or modifications of all or any portion of the VAR Applications including all reconfigurations, reassembly or reverse assembly, re-engineering or reverse engineering and recompilations or reverse compilations of the VAR Applications or any derivatives of the VAR Applications. You acknowledge that it shall be a breach of the agreement to utilize the relationship, and/or confidential information of the VAR Applications for purposes of competitive discovery.

The VAR Applications contain trade secrets of Oracle and Oracle's licensors and Customer shall not attempt, cause, or permit the alteration, decompilation, reverse engineering, disassembly or other reduction of the VAR Applications to a human perceivable form. Oracle reserves the right to replace, with functional equivalent software, any of the VAR Applications in future releases of the applicable program.

Contents

Send Us Your Comments	xi
Preface	xiii
Audience	xiii
Documentation Accessibility	xiii
Related Documents	xiii
Customer Support	xiii
Improved Process for Oracle Retail Documentation Corrections	xiv
Oracle Retail Documentation on the Oracle Help Center (docs.oracle.com)	xiv
Conventions	xv
1 Introduction	
About This Document	1-1
Hardware and Software Requirements	1-1
Cygwin Installation Requirement Notes	1-2
Starter Kit Components	1-3
Hardware and Software Requirement Notes	1-3
Terms	1-3
2 Installing on a Windows Environment	
MFP Cloud Service Starter Kit Overview	2-1
Starter Kit Installation on Windows	2-1
Starting the Cygwin Shell and Setting up the Environment	2-1
Download and Install Java JDK	2-2
Setup JAVA_HOME	2-2
RPAS Package Location	2-2
Installing the Starter Kit	2-2
Creating the Required Environment Variables	2-3
Steps to Access the Environment Variables Window	2-3
Create the RPAS_HOME Environment Variable	2-4
Create the RIDE_HOME Environment Variable	2-4
Update or Create the JAVA_HOME Environment Variable	2-5
Update the PATH Variable	2-6
Update the RPAS_JAVA_CLASSPATH Variable	2-6
The RIDE_OPTIONS Variable	2-6

Launching RPAS Cloud Edition Configuration Tools	2-7
Application Building	2-7
Object Store Locations	2-7
Updating the Starter Kit Installation	2-8

3 RPAS CE Virtual Machine

VirtualBox Software	3-1
System Requirements.....	3-2
VM Image	3-2
VM Setup.....	3-2
Using the VM.....	3-10
Launching the RPAS CE User Interface.....	3-10
Copying Files between the VM and the Host Desktop	3-13
Users in the VM.....	3-14
Using SQL Developer.....	3-15
Troubleshooting	3-16

A Appendix: Generating the Configuration for Plug-in Options

Steps to Generate MFP Cost Configuration.....	A-1
---	-----

List of Tables

1-1	Starter Kit Hardware and Software Requirements	1-1
1-2	Software Requirements Notes.....	1-3
3-1	Schema Users.....	3-15

List of Figures

2-1	Patch Search	2-2
2-2	System Properties - Advanced Tab	2-3
2-3	Environment Variables Window	2-4
2-4	Example of RPAS_HOME Variable	2-4
2-5	Example of RIDE_HOME Variable	2-5
2-6	JAVA_HOME Variable	2-5
2-7	Example of ORACLE_HOME Variable	2-5
2-8	Example of RPAS_JAVA_CLASSPATH Variable	2-6
2-9	Example of RIDE_OPTIONS Variable	2-7
3-1	VirtualBox Platform Packages	3-2
3-2	VM Download	3-2
3-3	Main Menu: Import Appliance... ..	3-3
3-4	Downloaded VM Base Image.....	3-3
3-5	Change the Name and RAM of the VM file	3-4
3-6	Settings Icon.....	3-5
3-7	System Memory Slider	3-6
3-8	System Processor CPU Change.....	3-7
3-9	New Random MAC Address for the Virtual Network Card	3-8
3-11	Starting the VM Image	3-9
3-13	VM is Ready Message	3-10
3-14	RPAS CE UI Sign In.....	3-11
3-15	Select Options for GA App Build	3-11
3-16	Select Options for non-GA App Build	3-12
3-17	Change Template Status List.....	3-12
3-18	Sharing Files.....	3-13
3-21	VirtualBox Error	3-17
A-1	Specify Parameters.....	A-1
A-2	Service Parameters.....	A-2
A-3	Run the Script	A-3
A-4	Verify the Solution.....	A-3

Send Us Your Comments

Oracle Retail Merchandise Financial Planning Cloud Service Starter Kit, Release 21.0.

Oracle welcomes customers' comments and suggestions on the quality and usefulness of this document.

Your feedback is important, and helps us to best meet your needs as a user of our products. For example:

- Are the implementation steps correct and complete?
- Did you understand the context of the procedures?
- Did you find any errors in the information?
- Does the structure of the information help you with your tasks?
- Do you need different information or graphics? If so, where, and in what format?
- Are the examples correct? Do you need more examples?

If you find any errors or have any other suggestions for improvement, then please tell us your name, the name of the company who has licensed our products, the title and part number of the documentation and the chapter, section, and page number (if available).

Note: Before sending us your comments, you might like to check that you have the latest version of the document and if any concerns are already addressed. To do this, access the Online Documentation available on the Oracle Help Center Web site. It contains the most current Documentation Library plus all documents revised or released recently.

Send your comments to us using the electronic mail address:

retail-doc_us@oracle.com.

Please give your name, address, electronic mail address, and telephone number (optional).

If you need assistance with Oracle software, then please contact your support representative or Oracle Support Services.

If you require training or instruction in using Oracle software, then please contact your Oracle local office and inquire about our Oracle University offerings. A list of Oracle offices is available on our Web site at <http://www.oracle.com>.

Preface

Oracle Retail Installation Guides contain the requirements and procedures that are necessary for the retailer to install Oracle Retail products.

Audience

This Starter Kit is written for the following audiences:

- Integrators and implementation staff

Documentation Accessibility

For information about Oracle's commitment to accessibility, visit the Oracle Accessibility Program website at

<http://www.oracle.com/pls/topic/lookup?ctx=acc&id=docacc>.

Access to Oracle Support

Oracle customers that have purchased support have access to electronic support through My Oracle Support. For information, visit

<http://www.oracle.com/pls/topic/lookup?ctx=acc&id=info> or visit

<http://www.oracle.com/pls/topic/lookup?ctx=acc&id=trs> if you are hearing impaired.

Related Documents

For more information, see the following documents in the Oracle Retail Merchandise Financial Planning Cloud Service Release 21.0 documentation set:

- *Oracle Retail Merchandise Financial Planning Cloud Service Administration Guide*
- *Oracle Retail Merchandise Financial Planning Cloud Service Implementation Guide*
- *Oracle Retail Merchandise Financial Planning Cost Cloud Service User Guide*
- *Oracle Retail Merchandise Financial Planning Retail Cloud Service User Guide*
- *Oracle Retail Merchandise Financial Planning Cloud Service Starter Kit Guide*
- *Oracle Retail Merchandise Financial Planning Cloud Service Release Notes*
- Oracle Retail Predictive Application Server Cloud Edition documentation set

Customer Support

To contact Oracle Customer Support, access My Oracle Support at the following URL:

<https://support.oracle.com>

When contacting Customer Support, please provide the following:

- Product version and program/module name
- Functional and technical description of the problem (include business impact)
- Detailed step-by-step instructions to re-create
- Exact error message received
- Screenshots of each step you take

Improved Process for Oracle Retail Documentation Corrections

To more quickly address critical corrections to Oracle Retail documentation content, Oracle Retail documentation may be republished whenever a critical correction is needed. For critical corrections, the republication of an Oracle Retail document may at times not be attached to a numbered software release; instead, the Oracle Retail document will simply be replaced on the Oracle Help Center Web site, or, in the case of Data Models, to the applicable My Oracle Support Documentation container where they reside.

This process will prevent delays in making critical corrections available to customers. For the customer, it means that before you begin installation, you must verify that you have the most recent version of the Oracle Retail documentation set. Oracle Retail documentation is available on the Oracle Help Center at the following URL:

<http://www.oracle.com/technetwork/documentation/oracle-retail-100266.html>

An updated version of the applicable Oracle Retail document is indicated by Oracle part number, as well as print date (month and year). An updated version uses the same part number, with a higher-numbered suffix. For example, part number F123456-02 is an updated version of a document with part number F123456-01.

If a more recent version of a document is available, that version supersedes all previous versions.

Oracle Retail Documentation on the Oracle Help Center (docs.oracle.com)

Oracle Retail product documentation is available on the following web site:

<https://docs.oracle.com/en/industries/retail/index.html>

(Data Model documents are not available through Oracle Help Center. These documents are packaged with released code, or you can obtain them through My Oracle Support.)

Conventions

The following text conventions are used in this document:

Convention	Meaning
boldface	Boldface type indicates graphical user interface elements associated with an action, or terms defined in text or the glossary.
<i>italic</i>	Italic type indicates book titles, emphasis, or placeholder variables for which you supply particular values.
monospace	Monospace type indicates commands within a paragraph, URLs, code in examples, text that appears on the screen, or text that you enter.

Introduction

Welcome to the *Oracle Retail Merchandise Financial Planning Cloud Service Starter Kit*. This chapter outlines the contents of this guide, discusses the updated components with respect to the previous version, lists hardware and software requirements, and defines commonly used notations and terms.

Using this document allows users to:

- Install RPAS Windows Starter Kit
- Launch ConfigTools and application plug-ins for modifying an existing or developing a new application configuration.
- Validate the configurations using scripts in Cygwin

About This Document

This document contains information for installation of the Starter Kit components.

Read this entire guide before beginning the installation process to ensure you understand the installation process and have all the necessary documentation, hardware, and software available.

Hardware and Software Requirements

[Table 1–1](#) describes the hardware and software requirements for the Starter Kit.

Note: Java can be acquired for Microsoft Windows at: www.java.com.

Table 1–1 Starter Kit Hardware and Software Requirements

Requirement	Details
Supported Operating Systems for RPAS Configuration Tools	<p>Microsoft Windows 10</p> <p>Note: Oracle Retail assumes that the retailer has ensured its Operating System has been patched with all applicable Windows updates.</p> <p>RPAS Configuration Tools requires 64-bit Java 1.8 or later.</p>
Required Software	<ul style="list-style-type: none"> ■ Java 8 JDK (required to support the RPAS Cloud Edition Configuration Tools.) ■ Microsoft 2015 Runtime Libraries ■ VirtualBox ■ Cygwin

Table 1–1 (Cont.) Starter Kit Hardware and Software Requirements

Requirement	Details
Microsoft 2015 Runtime Libraries	<p>Ensure that these Microsoft 2015 Runtime Libraries are installed to enable RPAS</p> <p>RPAS Cloud Edition Configuration Tools and other RPAS utilities:</p> <ul style="list-style-type: none"> ■ vc_redist.x64.exe ■ vc_redist.x86.exe <p>Download these libraries from this link:</p> <p>https://www.microsoft.com/en-us/download/details.aspx?id=48145</p> <p>Note: Use Microsoft Visual C++ 2015 or higher for use with RPAS Cloud Edition Configuration Tools and other RPAS utilities.</p>
Cygwin	<p>64-bit installation of Cygwin</p> <p>Cygwin provides a Unix-like environment under Windows. You must install Cygwin to emulate UNIX commands (required for running some RPAS Cloud Edition Configuration Tools utilities on Windows).</p>

Cygwin Installation Requirement Notes

The following notes pertain to the RPAS hardware and software requirements.

Installation Requirements for Cygwin

For some RPAS Cloud Edition Configuration Tools utilities on Windows, you must install Cygwin to emulate UNIX commands. You can find more information about downloading this product at: <http://www.cygwin.com>.

1. Cygwin should be installed under this directory:

C:\cygwin

Note: Only use this folder and do not install under **C:\Program files** or any other folders with spaces to avoid file path conversion issues.

2. Select **Use System Proxy Settings** for install to display a list of mirror sites.

WARNING: In addition to the default packages that are installed, make sure to select **mksh** and **unzip** packages to be installed.

Starter Kit Components

For information on installing the Starter Kit, refer to [Chapter 2, "Installing on a Windows Environment."](#)

For information on installing the VM related software refer to [Chapter 3, "RPAS CE Virtual Machine"](#)

Hardware and Software Requirement Notes

The following notes pertain to the RPAS hardware and software requirements:

- An application for unzipping (.zip) components must be installed and used for extracting the RPAS Configuration Tools.
- You must install Cygwin to emulate UNIX commands (required for running some RPAS Configuration Tools utilities on Windows). You can find more information about downloading this product at: <http://www.cygwin.com>.

Table 1–2 indicates which software components are needed for each task.

Table 1–2 Software Requirements Notes

Item	Details
Task	Use the Configuration Tools to create or modify solutions.
Typical User	Solution/ Product Administrator
Platforms	Windows 10
RPAS Server	Yes
RPAS Clients	No
Configuration Tools	Yes
Java	Yes

Terms

The following table lists terms that are used in this guide:

Term	Definition
RPAS	The Oracle Retail Predictive Application Server provides the foundation for Oracle Retail solutions such as Oracle Retail Demand Forecasting (RDF), Merchandise Financial Planning (MFP), and Advanced Inventory Planning (AIP). RPAS does not include any business logic, but it enables the solutions to store, manipulate and retrieve data. It provides the solutions with a standard interface based on wizards, templates, workbooks, and batch processes.
PDS	Planning Data Store. Database containing the data and metadata for RPAS applications.
RPAS Configuration Tools	The tools used to configure an RPAS solution. For more information, refer to the <i>Oracle Retail Predictive Application Server Configuration Tools User Guide</i>

Installing on a Windows Environment

This chapter describes how to install the MFP Cloud Service Starter Kit on a Windows environment.

MFP Cloud Service Starter Kit Overview

RPAS Cloud Service is comprised of many components. In addition, there are solutions that have been developed using the RPAS Cloud Service foundation. Examples of these solutions include Oracle Retail Merchandise Financial Planning (MFP) and Oracle Retail Demand Forecasting (RDF). Each application supported by the RPAS Cloud Service Platform has a dedicated Starter Kit.

The components of the Starter Kit software include the following:

- RPAS Configuration Tools
- RPAS Server libraries used by the Configuration Tools
- Documentation

Note: The Starter Kit distribution does not contain a full Retail Home instance. As a result, Retail Home and its features are not supported in Starter Kit environments.

Starter Kit Installation on Windows

For the purposes of this section, a slash “/” is used to delineate directories and files in paths. Users in a Windows Command Prompt environment need to either use a backslash “\” as the delineation character or use double quotes around paths.

This section contains the following topics:

- [Starting the Cygwin Shell and Setting up the Environment](#)
- [RPAS Package Location](#)
- [Installing the Starter Kit](#)

Starting the Cygwin Shell and Setting up the Environment

Perform the following procedures to start the Cygwin shell and set up the environment.

Download and Install Java JDK

This version of ConfigTools support 64 bit Java JDK version. Java needs to be installed under the directory which does not have spaces in it.

C:\Java

Setup JAVA_HOME

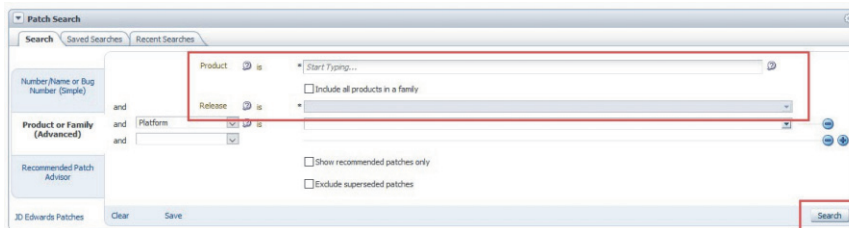
After installing JDK inside Cygwin, setup the JAVA_HOME as described in [Creating the Required Environment Variables](#).

RPAS Package Location

The RPAS package can be found on My Oracle Support.

1. Access My Oracle Support using this URL: <https://support.oracle.com>
2. From the My Oracle Support dashboard, click on the **Patches & Updates** tab.
3. From the **Patches & Updates** tab, select the **Product or Family (Advanced Search)** that is located in the **Patch Search** panel.
4. In the **Product** search box, enter *Oracle Retail Merchandise Financial Planning Cloud Service*.
5. Click the arrow on the Release list to view all of the available releases for your product. Select the release that you wish to access and then click **Search**.

Figure 2–1 Patch Search



6. From the Patch Advanced Search Results, click the patch link located in the Patch Name column.
7. Verify that this is your desired patch and then click **Download**.

Note: Some customers may not be able to download the Starter Kit package, due to a limitation in My Oracle Support portal's structure. If you run into a problem trying to download, then log an SR through which Oracle will provide you a link to access the Starter Kit package.

Installing the Starter Kit

The following procedures provide information about creating the necessary folders on your Windows PC and copying the Configuration Tools components to them.

1. Using Windows Explorer, navigate to your C drive, create a folder named **Oracle**.
2. Open the **Oracle** folder.

- Unzip the downloaded file with a name similar to **p33174696_19000_MSWIN-x86-64.zip** into the newly created Oracle directory on the Windows machine. Once extracted, the following directories appear:

Directory	Description
ConfigTools	This directory contains the components required to run the RPAS Configuration Tools.

In this example, the path **C:\Oracle\MFP_Cost_Starter_Kit\ConfigTools** is both the **RPAS_HOME** and **RIDE_HOME**. Environment variables are defined on your Windows PC to point to this location so that RPAS will function correctly. Refer to "[Creating the Required Environment Variables](#)" for information on creating the necessary RPAS variables.

Creating the Required Environment Variables

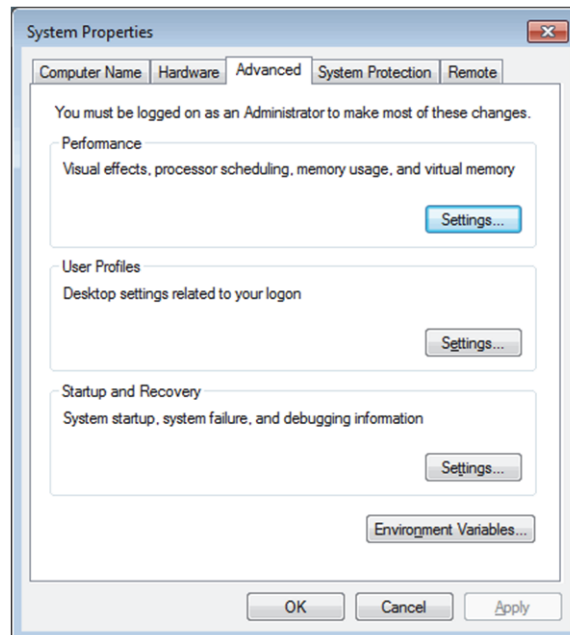
The following steps outline the process to follow and environment variables required to support the RPAS installation and application install.

Steps to Access the Environment Variables Window

Perform the following steps to access the Environment Variables window.

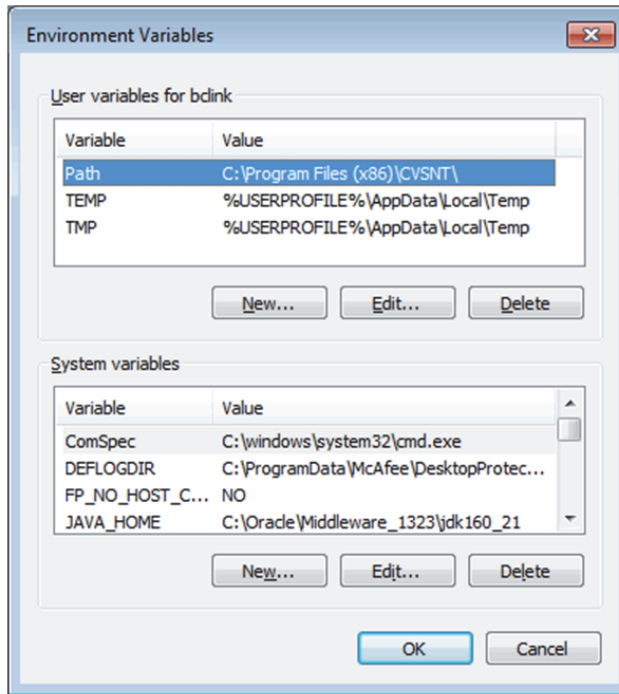
- Press Windows key and **R**, the Run box opens.
- Type **sysdm.cpl** and press **Enter**.
- Select the **Advanced** tab.
- At the bottom of the window, click **Environment Variables**.

Figure 2–2 System Properties - Advanced Tab



- The [Environment Variables Window](#) window opens.

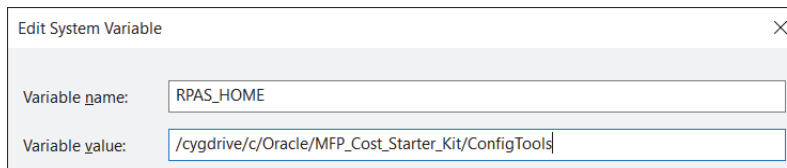
Figure 2–3 Environment Variables Window



Create the RPAS_HOME Environment Variable

1. Under the System variables box, click **New**. The New System Variable dialog box opens.
2. Enter **RPAS_HOME** in the **Variable name** field.
3. Enter the path of the **RPAS Server** folder in the **Variable value** field. In our [Figure 2–4](#) example, this is: **/cygdrive/c/Oracle/MFP_Cost_Starter_Kit/ConfigTools**

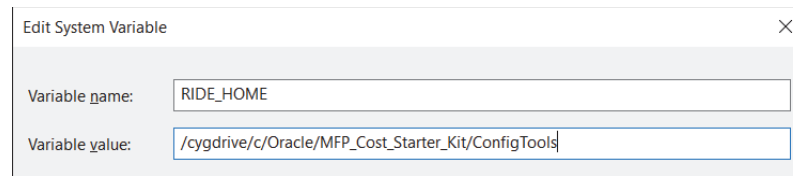
Figure 2–4 Example of RPAS_HOME Variable



4. Click **OK**. **RPAS_HOME** now appears in the Variable name box.

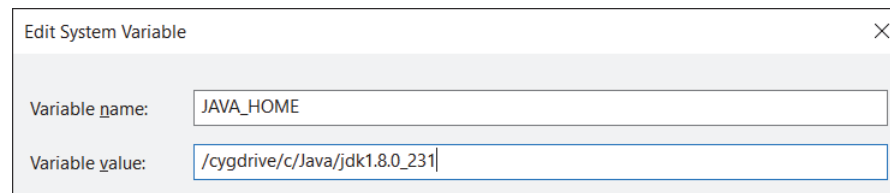
Create the RIDE_HOME Environment Variable

1. Under the System variables box, click **New**. The New System Variable dialog box opens.
2. Enter **RIDE_HOME** in the **Variable name** field.
3. Enter the path of the **ConfigTools** folder in the **Variable value** field. In our [Figure 2–5](#) example, this is: **/cygdrive/c/Oracle/MFP_Cost_Starter_Kit/ConfigTools**
4. Click **OK**.

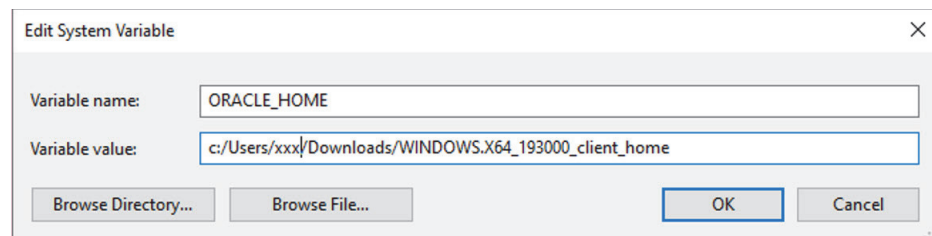
Figure 2–5 Example of RIDE_HOME Variable

Update or Create the JAVA_HOME Environment Variable

1. Under the System variables box, select the JAVA_HOME environment variable and update it
2. Enter the path of the java folder in the Variable value field. In Figure 2–6, this is: **/cygdrive/c/Java/jdk1.8.0_231**

Figure 2–6 JAVA_HOME Variable

3. Create the ORACLE_HOME environment variable.
 - a. Ensure that the Oracle Database 19c Client is installed locally on your Windows machine. If not installed, you can download a copy from: <https://www.oracle.com/database/technologies/oracle19c-windows-downloads.html>
For example, download the **WINDOWS.X64_193000_client_home.zip** file and then unzip it into your Download directory.
 - b. Beneath the System variables box, click **New**. The New System Variable dialog box opens.
 - c. In the Variable name field, enter **ORACLE_HOME**
 - d. In the Variable value field, enter the path of the Oracle database 19c client folder. In Figure 2–7, this is:
c:/Users/xxx/Downloads/WINDOWS.X64_193000_client_home

Figure 2–7 Example of ORACLE_HOME Variable

Update the PATH Variable

1. Under the System variables section, select the PATH environment variable and click **Edit**.
2. Insert the complete paths for RPAS_HOME, RIDE_HOME, and JAVA_HOME as shown:

```
%RPAS_HOME%\bin;%RPAS_HOME%\applib;%RPAS_HOME%\lib;
%JAVA_HOME%\bin;%JAVA_HOME%\lib;
%JAVA_HOME%\jre\bin\server;
%ORACLE_HOME%\bin;%ORACLE_HOME%\lib;
```

Note: Remember to separate all path statements with semicolons (;).

3. Select **OK** to save your changes.

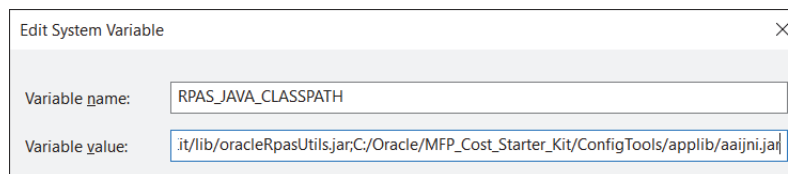
Update the RPAS_JAVA_CLASSPATH Variable

The RPAS_JAVA_CLASSPATH is used to enable the MFP solution to execute extensions to RPAS written within the AAI framework. In order for the Configuration Tools to support these extensions, it is necessary to set the RPAS_JAVA_CLASSPATH environment variable so that the Configuration Tools can locate the libraries.

The value of the RPAS_JAVA_CLASSPATH variable should be the locations of the aaijni.jar located in the applib subdirectory of the Starter Kit installation and the oracleRpasUtils.jar located in the lib subdirectory of the Starter Kit installation. Assuming the default location for Starter Kit installation, RPAS_JAVA_CLASSPATH should be set to:

```
C:/Oracle/ConfigTools/MFP_Cloud_Starter_Kit/lib/oracleRpasUtils.jar;C:/Oracle/ConfigTools/MFP_Cost_Starter_Kit/applib/aaijni.jar
```

Figure 2–8 Example of RPAS_JAVA_CLASSPATH Variable



The RIDE_OPTIONS Variable

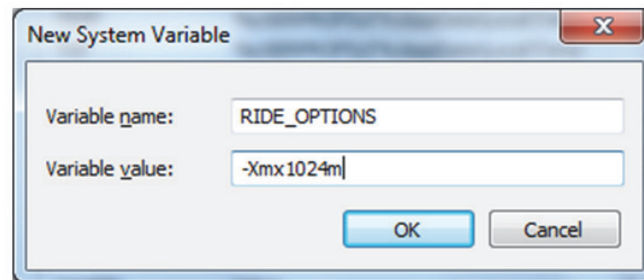
The RIDE_OPTIONS environmental variable can be used to pass information into the ConfigTools.

By default, the Java Virtual Machine requests on the order of 268 MB of RAM from the OS to allocate for its heap. This is even more of an issue when multiple configurations are open in the Configuration Tools and must be held in memory simultaneously.

By using the **-Xmx** option, you can instruct the Java Virtual Machine to request more memory from the OS to prevent situations when all allocated memory is exhausted. The syntax of the property is:

`-Xmx###m`, where ### is the amount, in megabytes, of memory the JVM is to request. Common values for this argument are `-Xmx512m` or `-Xmx1024m`.

Figure 2-9 Example of RIDE_OPTIONS Variable



Launching RPAS Cloud Edition Configuration Tools

Perform the following steps to launch RPAS Cloud Edition Configuration Tools.

1. Start Cygwin terminal and run the following commands:

```
>cd $RIDE_HOME/bin
```

then

```
>ConfigTools
```

Application Building

This section describes building applications on Oracle cloud using the configuration from the Starter Kit.

Object Store Locations

For the purposes of building the application, following subpaths in the object store are used:

config

For uploading the application configuration into the cloud environment, create an archive containing the config directory and all of its contents. This archive file must be named as `<config_name>_config.zip`. This archive file must be uploaded to the in Object Store under **planning/incoming/config location**.

If using MFP CS template version then customer can use the plug-ins to generate different available configuration plug-in options. Refer to "[Appendix: Generating the Configuration for Plug-in Options.](#)"

json

Dashboards uses `dashboardSettings.json` and this file is used by the RPASCE client for displaying the dashboard. It is also possible to use an empty file if you do not need to configure the dashboard. This file if present should be uploaded to the Object Store under **planning/incoming/json location**.

batch_control

The set of batch process control files must be uploaded to the Object Store under **planning/incoming/batch_control location**.

integration

The batch process also needs **interface.cfg** file which is a configuration file to get data from RAP Integration. Refer to the *Oracle Retail Predictive Application Server Cloud Edition Implementation Guide* for more details about configuring the **interface.cfg** file. This file is needed only if some interfaces are configured to get the data. This file if present should be uploaded to the Object Store under **planning/incoming/config location**.

input

The hierarchy data files and measure input files must be uploaded to the object store under **planning/incoming/input** as individual files or as an archive in the .zip format. If uploading data files as an archive, the name of the archive file should be same as the one used in batch control files for the compressed files. Remember not to include any directory structure in the archive file. In addition to the application build and patch processes, batch framework tasks like measload, hierload, unpack, and waittrigger will check for incoming files in this same object store input location.

Updating the Starter Kit Installation

Each release of Cloud Service will have a version-specific Starter Kit. As the product is enhanced in future versions, it will be necessary to update the Starter Kit to incorporate these enhancements. The following steps outline the process of updating the Starter Kit installation:

1. Download the new version of the MFP Cloud Service Starter Kit.
2. Delete the contents of the **C:/Oracle/MFP_Starter_Kit** directory.

WARNING: It is highly recommended to save custom configurations outside of the **MFP_Starter_Kit** directory so that they are not accidentally deleted when updating the Starter Kit.

3. Follow the installation instructions for the new version of the Starter Kit.
4. Run plug-in automation on the existing configuration to create a version of the configuration for the selection configuration options. Follow the instructions in the *Oracle Retail Merchandise Financial Planning Cloud Service Implementation Guide*.
5. Apply the changes in the newly generated configuration to the MFP Cloud Service application.

Note: For more information on using the RPAS Configuration Manager, refer to the *Oracle Retail Predictive Application Server Configuration Tools User Guide*.

RPAS CE Virtual Machine

RPAS Cloud Edition (CE) Virtual Machines (VMs) provide a way for anyone to be up and running using the RPAS CE software as quickly as possible without having to deal with all the steps around setting up the RPAS CE server, UI and its applications. The VMs are created for Oracle consultants and partners who want to get a quick feel of the application without having to set up the hardware and software resources necessary for trying out RPAS CE solutions.

RPAS CE VMs are not a replacement or substitution for pre-production Cloud Environments (STAGE, Dev, and so on). Note that the VMs are only provided to give a quick feel of the application and are not intended to be used as full-blown implementation tool.

This chapter lists the steps necessary to deploy an RPAS Cloud Edition VM, launch the UI and connect to the application included in the VM. All the components - RPAS CE server, UI, PDS (Planning Data Store) are all local to the VM. Disregard the version numbers shown in the images in this chapter as the steps are the same across different versions.

Contrary to previous versions of the RPAS CE VMs where the RPAS CE server and UI software were directly installed in the VM they are now deployed using Docker inside the VirtualBox VM. Therefore, the RPAS CE server, UI and database processes are running inside their silos known as containers inside the VM. For more information on Docker, refer to the URL:

<https://docs.docker.com/>

Note: The VMs do not include Retail Home, Science, or RI components. It only contains the base planning application. Also, the VMs do not use IDCS or Object Storage. Notifications are currently not supported in the VM.

VirtualBox Software

Download the Oracle VirtualBox software that is available for Windows, Mac, Linux and Solaris from the following link. For Windows, select the download link for Windows Hosts:

<https://www.virtualbox.org/wiki/Downloads>

Note: Use the VirtualBox version of 6.1 or later. Previous versions are not guaranteed to work.

Note: The previously mentioned Operating System is the OS of the host machine where the VirtualBox software will be installed and not the OS of the VM image itself. For most installers this will be a Windows system as shown in [Figure 3–1](#).

Figure 3–1 VirtualBox Platform Packages

VirtualBox 6.0.14 platform packages

- [Windows hosts](#)
- [OS X hosts](#)
- [Linux distributions](#)
- [Solaris hosts](#)

System Requirements

The Oracle VirtualBox software has the following system requirements:

- 16 GB RAM
- Quad-core CPU
- 50 GB free disk space

VM Image

Download the VM the same way as you download the Starter Kit using the **Patches & Updates** tab from the My Oracle Support dashboard. Refer to "[RPAS Package Location](#)" for instructions on My Oracle Support downloads.

Figure 3–2 VM Download

Patch Name	Description	Release	Platform (Language)	Product	Size
33617549	Oracle Retail Merchandise Financial Planning Enterprise Edition Cloud Service Virtual Machine 19.0.008.12 (Patchset)	19.0.0.0.0	Microsoft Windows x64 (64-bit) (American English)	Oracle Retail Merchandise Financial Planning Enterprise Edition Cloud Service (More...)	9.5 GB
33617522	Oracle Retail Merchandise Financial Planning Enterprise Edition Cloud Service Starter Kit 19.0.008.10 (Patchset)	19.0.0.0.0	Microsoft Windows x64 (64-bit) (American English)	Oracle Retail Merchandise Financial Planning Enterprise Edition Cloud Service (More...)	18.4 MB

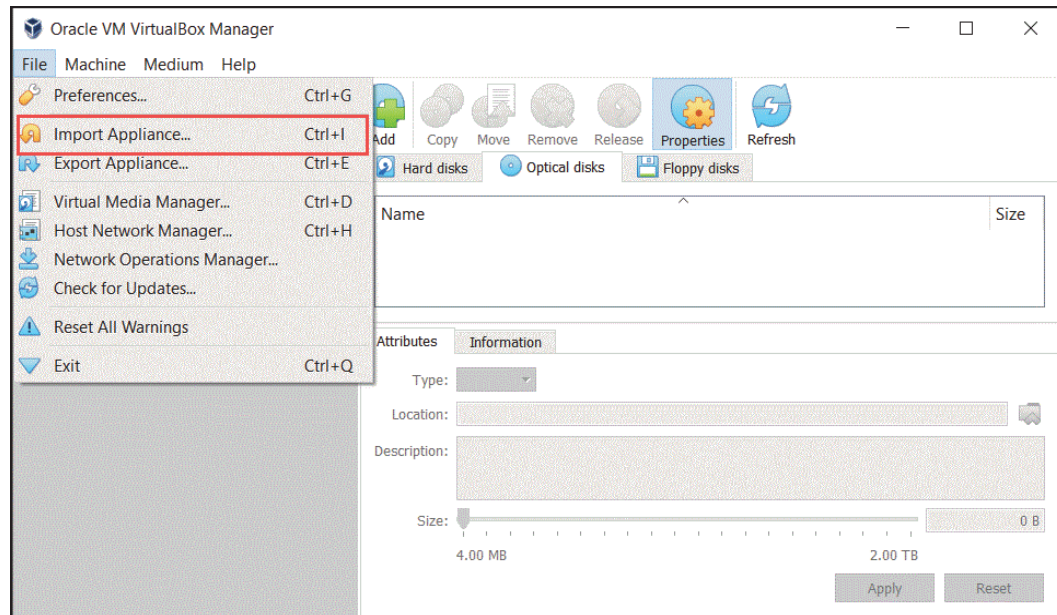
After downloading the VM, unzip the archive to get the file with the **.ovf** extension.

VM Setup

Perform the following steps to import the downloaded RPAS CE VM image file using VirtualBox software and then start it.

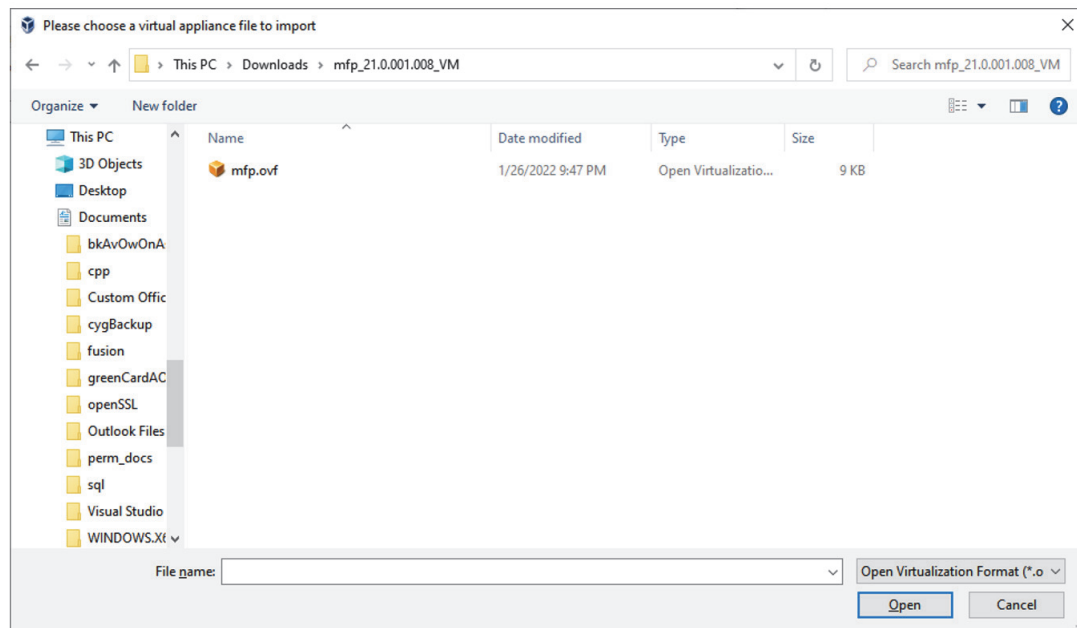
1. Start the VirtualBox software
2. From the main menu, click **File** and then select **Import Appliance...** as shown in [Figure 3–3](#)

Figure 3–3 Main Menu: Import Appliance...



3. Browse to the downloaded VM base image (.ovf file). Select the VM file with the .ovf extension and click **Open**.

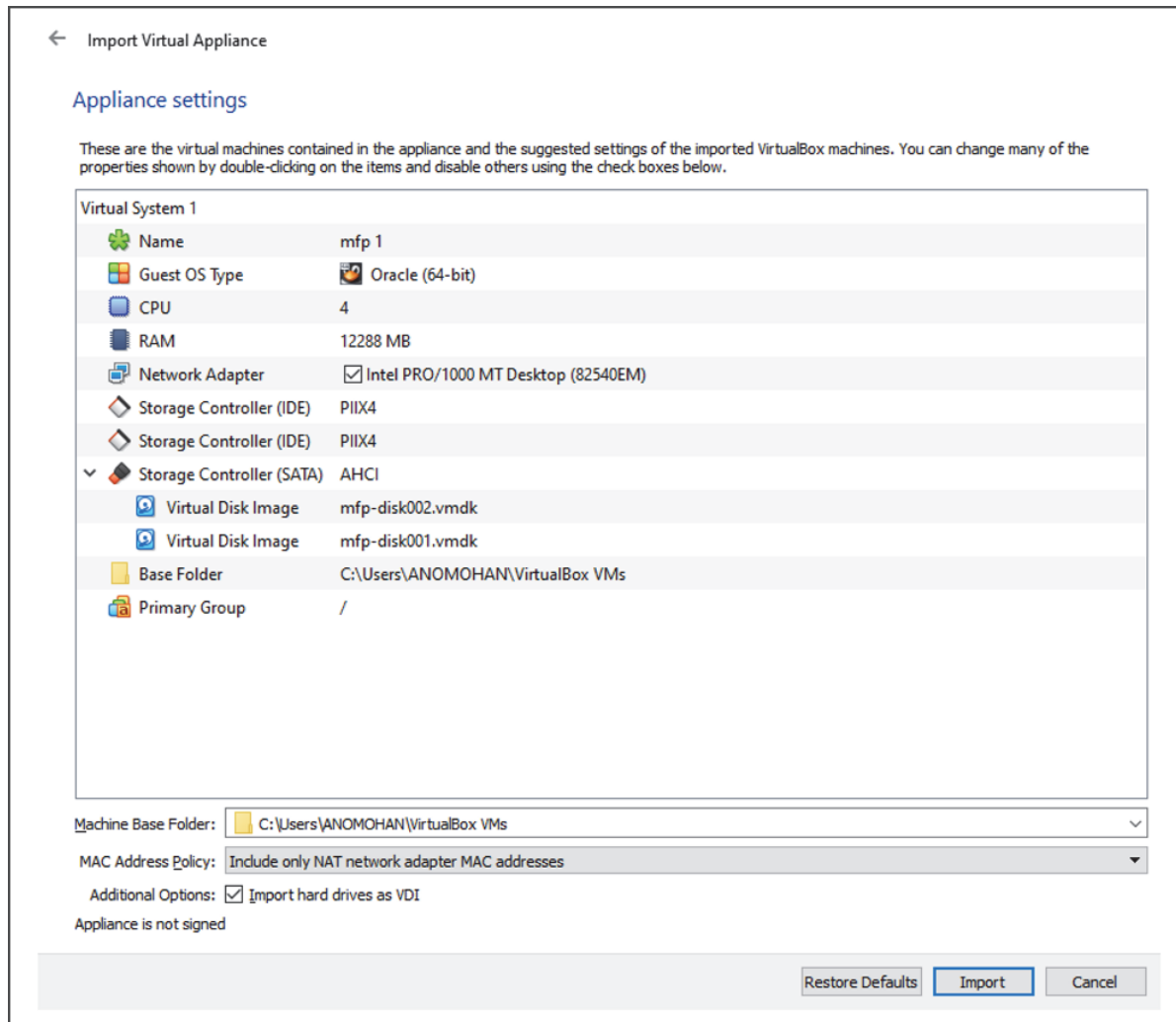
Figure 3–4 Downloaded VM Base Image



4. On the screen shown in [Figure 3–5](#), change the name of the VM or increase the RAM used for a smoother VM experience, but choose the RAM setting carefully. The memory given to VM will not be available to your host OS while the VM is running, and this can significantly impact the performance of your host OS if it is already running low on memory due to other applications.

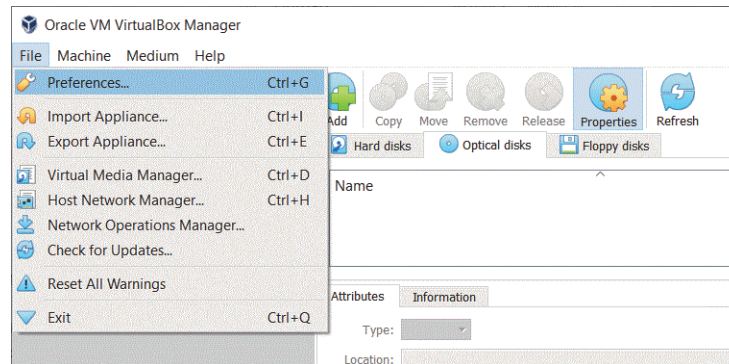
Click **Import**.

Figure 3–5 Change the Name and RAM of the VM file

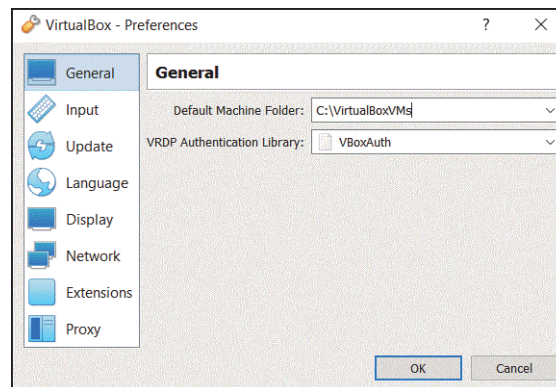


Note: This step creates a large file of around 40 GB on your local disk. The default location of these files is the location where VirtualBox is installed (usually the C drive for Windows). If the default location does not contain at least 50 GB of free space, then change the default location as described here:

- Click **File** and then select **Preferences...**



- Change the location of the Default Machine Folder to a drive that has enough space.

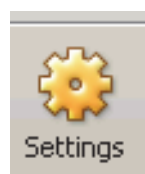


5. Wait for the image to get imported. It might take a few minutes.

If your machine has more than 16 GB of memory, increase the memory used by the VM. Note that the post-build batch for the initial application build will not work without at least 12 GB of memory allocated.

Click the Settings icon to change the settings for the selected VM.

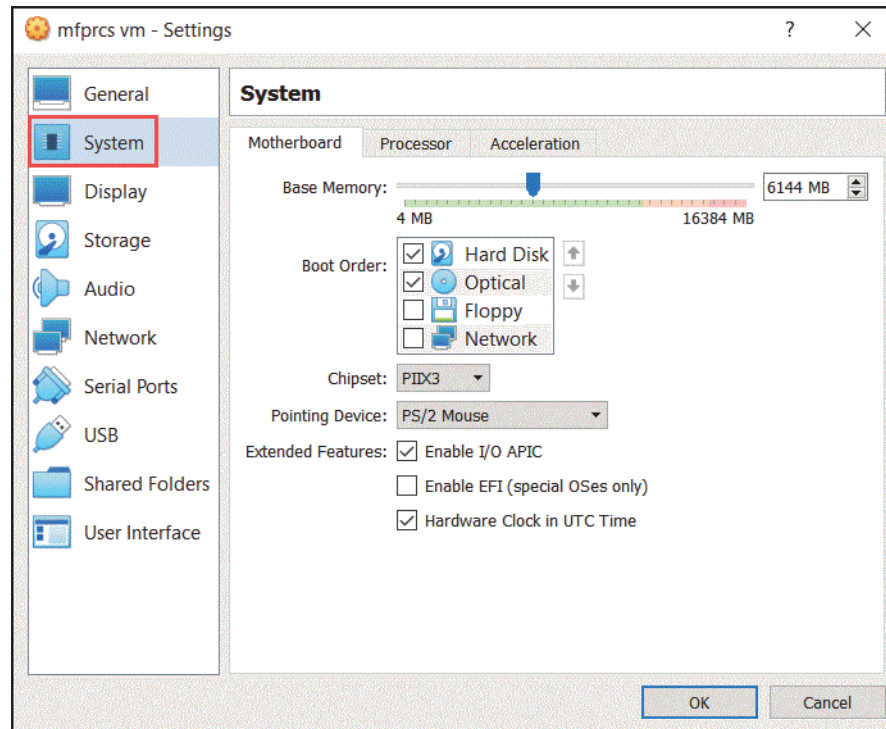
Figure 3–6 Settings Icon



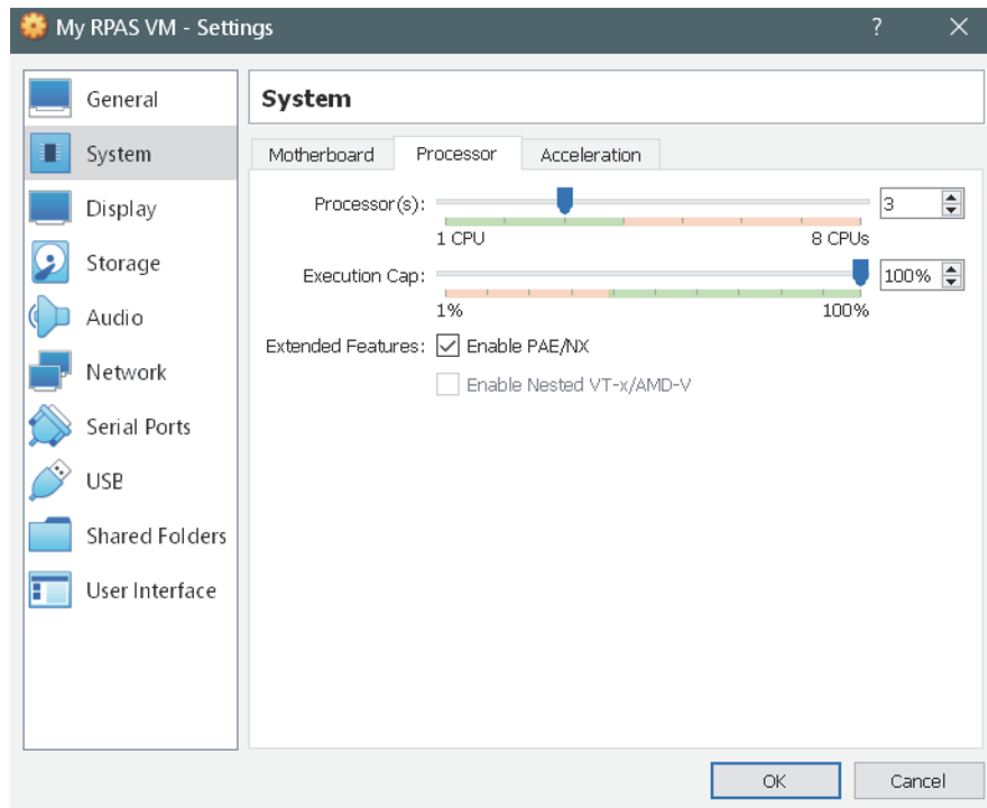
- From the left panel, click **System** and then move the slider to desired memory.

Note: Sometimes the settings screen shows an invalid settings warning. This warning can be ignored.

Figure 3–7 System Memory Slider



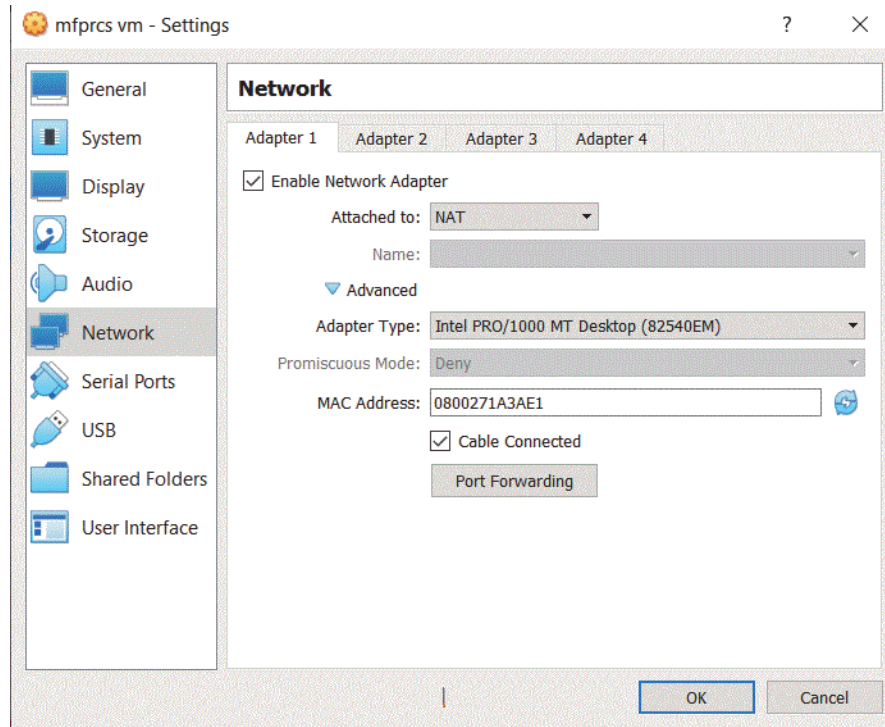
- Select the Processor tab. If you run into any performance issues while using the VM and your host machine has multi-core processors, you may increase the available CPU for the VM by increasing the number of processors in the Processor tab (Figure 3–8).

Figure 3–8 System Processor CPU Change

- Optional step- Only perform this step if someone else will use an RPAS CE VM on the same network.

From the left panel, click **Network** and then click the Circle icon next to the MAC Address text box. This gives the virtual network card in the VM a new random MAC address. If the MAC Address setting is not visible, then click the Advanced icon.

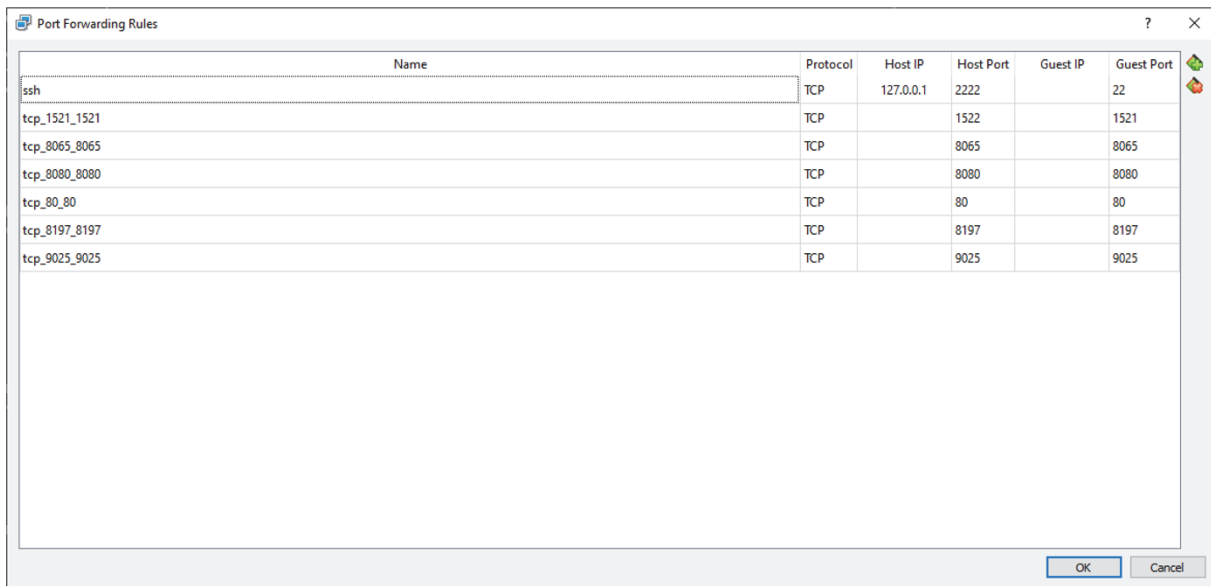
Figure 3–9 New Random MAC Address for the Virtual Network Card



9. Click Port Forwarding.

You should see the rule that forwards port 8080 inside the VM to port 8080 on the host machine. If you have some other application running on port 8080 of the host machine change the host port to an unused port number.

Figure 3–10 Port Forwarding Rules Window

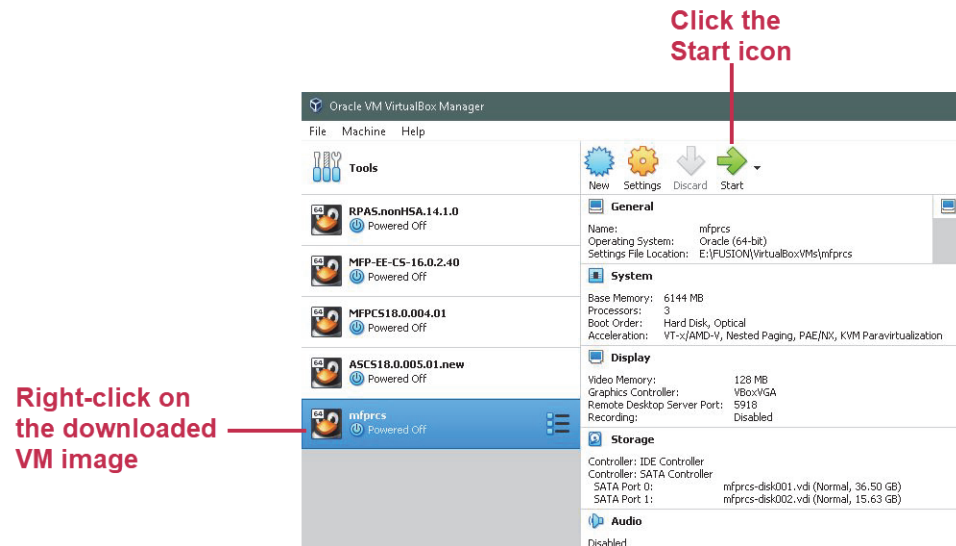


Click **OK**.

10. Start the imported image.

From the left panel of the VirtualBox, right-click on the VM image you downloaded and select **Start**. Alternately you can select the image and click the Start arrow icon from the top menu.

Figure 3–11 Starting the VM Image



11. In the grub boot-loader screen there is no action required. Let the VM automatically boot the default kernel.

Wait for OS to finish loading and it displays similar messages as shown in Figure 3–12.

Figure 3–12 Load Messages

```
[ 83.512215] IPVS: Registered protocols (TCP, UDP, SCTP, AH, ESP)
[ 83.512664] IPVS: Connection hash table configured (size=4096, memory=64Kbytes)
[ 85.145210] IPVS: ipvs loaded.
[ 85.279498] IPVS: [rr] scheduler registered.
```

12. In a browser on the host machine launch the following URL:

<http://localhost/logs/startup.log>

When the VM is ready to be used, an *Environment is ready for use!* message displays as shown in Figure 3–13.

Figure 3–13 VM is Ready Message

```

=====
start.ksh
=====
[start.ksh] Executing commands as user: oracle
[start.ksh]: Fri Jan 28 13:39:02 -05 2022 -- Waiting for RPAS stack services to come up...
Fri Jan 28 13:39:13 -05 2022 -- Waiting for service RPAS_http to reach 3/3 replicated running tasks...
Fri Jan 28 13:39:13 -05 2022 -- Waiting for service RPAS_rpasserver to reach 1/1 replicated running tasks...
Fri Jan 28 13:39:13 -05 2022 -- Waiting for service RPAS_launcher to reach 3/3 replicated running tasks...
Fri Jan 28 13:39:13 -05 2022 -- Waiting for service RPAS_taskdaemon to reach 1/1 replicated running tasks...
Fri Jan 28 13:39:13 -05 2022 -- Waiting for service RPAS_client to reach 1/1 replicated running tasks...
Fri Jan 28 13:40:30 -05 2022 -- Service RPAS_client has started successfully!
Fri Jan 28 13:41:25 -05 2022 -- Service RPAS_launcher has started successfully!
Fri Jan 28 13:41:25 -05 2022 -- Service RPAS_http has started successfully!
Fri Jan 28 13:41:25 -05 2022 -- Service RPAS_rpasserver has started successfully!
Fri Jan 28 13:41:25 -05 2022 -- Service RPAS_taskdaemon has started successfully!
[start.ksh]: Fri Jan 28 13:41:25 -05 2022 -- Creating RPAS service logs under /var/www/html/logs...
[start.ksh]: Fri Jan 28 13:41:26 -05 2022 -- PDS Property subgroup_max_parallel set to 4...

[start.ksh]: Fri Jan 28 13:41:26 -05 2022 -- Environment is ready for use! You may log into the RPAS Client at
http://localhost:8080/rpasceui
It is safe to close this window.

```

Using the VM

All the necessary processes needed for using the RPAS CE application in the VM automatically start when the VM boots up. The system just needs a few minutes after the login screen appears to bring up all of the necessary processes. However depending on the resources available to the VM, the time required for startup will differ.

Launching the RPAS CE User Interface

Perform the following steps to launch the RPAS CE User Interface (UI).

1. Open a browser on the host machine where you started the VirtualBox software and paste the URL into the address bar and press **Enter**

<http://localhost:8080/rpasceui/>

Figure 3–14 shows the RPAS CE UI Sign In, enter the Username: *oci.admin* and the Password: *Orcl1234*.

Figure 3–14 RPAS CE UI Sign In

localhost:8080

This site is asking you to sign in.

Username

oci.admin

Password

••••••••

Sign in Cancel

The VM does not come with any applications prebuilt. Therefore on the initial login, a user only has bootstrap access and no task flows. Users can use the Online Admin Tools to build a GA or EE application.

- To build the GA app using the input files present in the VM select the GA check boxes as shown in [Figure 3–15](#).

Refer to either the *Oracle Retail Merchandise Financial Planning Cloud Service Administration Guide* or *Oracle Retail Merchandise Financial Planning Enterprise Edition Cloud Service Administration Guide* for more details about building the application.

Figure 3–15 Select Options for GA App Build

Submit a New Admin Task

Specify the arguments for task:

Task Label

Build Application

Partition Dimension

dept

Use GA Configuration with no extensibility?

Use GA data?

Overwrite Existing Application?

Set RPAS_TODAY in application

20230101

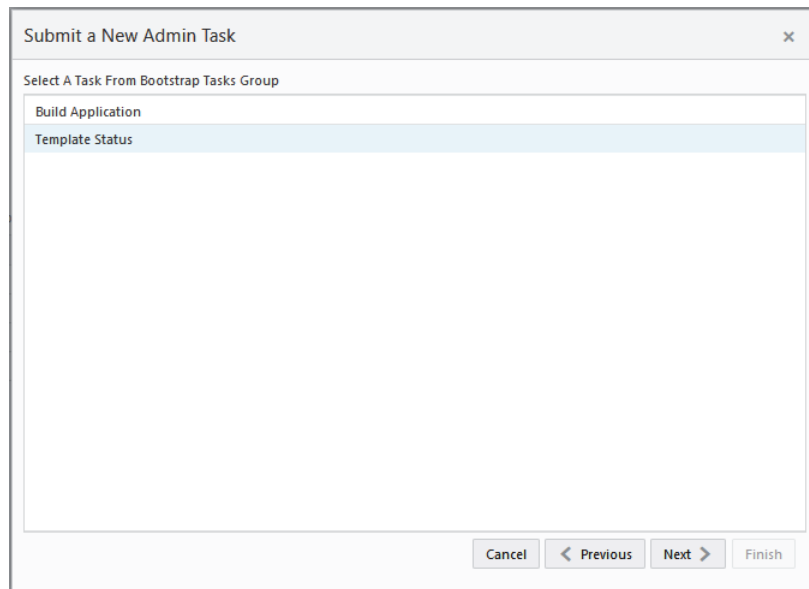
Batch Task Group to run after Application Build

postbuild

Cancel < Previous Next > Finish

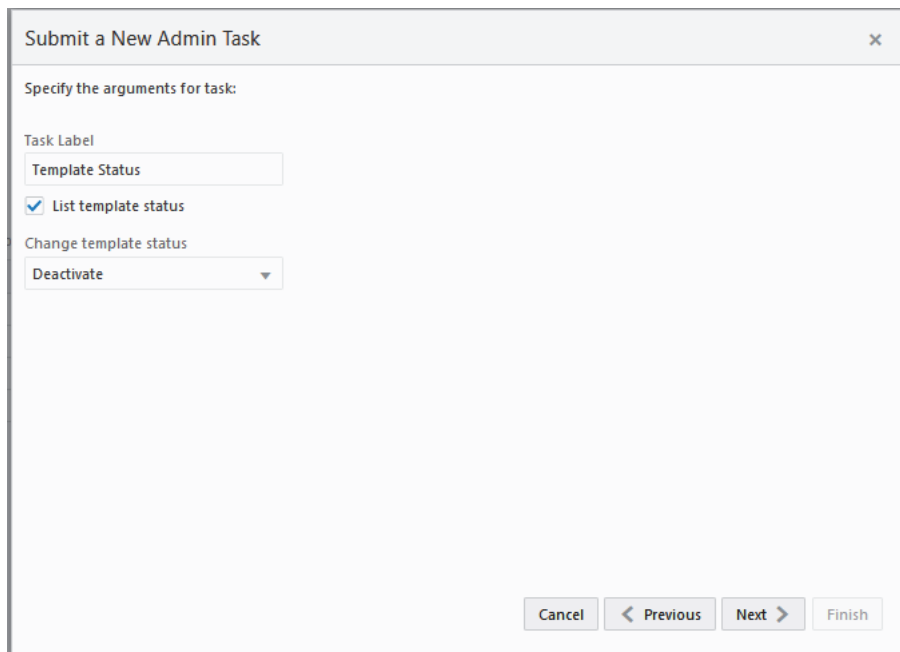
3. If your build is not using GA, run the OAT task Template Status and then deactivate the template status.

Figure 3–16 *Select Options for non-GA App Build*



- a. From the Change template status drop-down list, select **Deactivate**. Click **Next** and then click **Finish** to run the task.

Figure 3–17 *Change Template Status List*



Note: Hierarchy data is now loaded after the application is built as a post-build step. If the template status is active, just run the post-build batch that is available as part of GA. If the template is deactivated, then a post-build batch can be setup using the control files uploaded during application build to load the hierarchy data.

Alternately the load Dimension Data task is available in the online Admin Tools and can be used to load the hierarchy data.

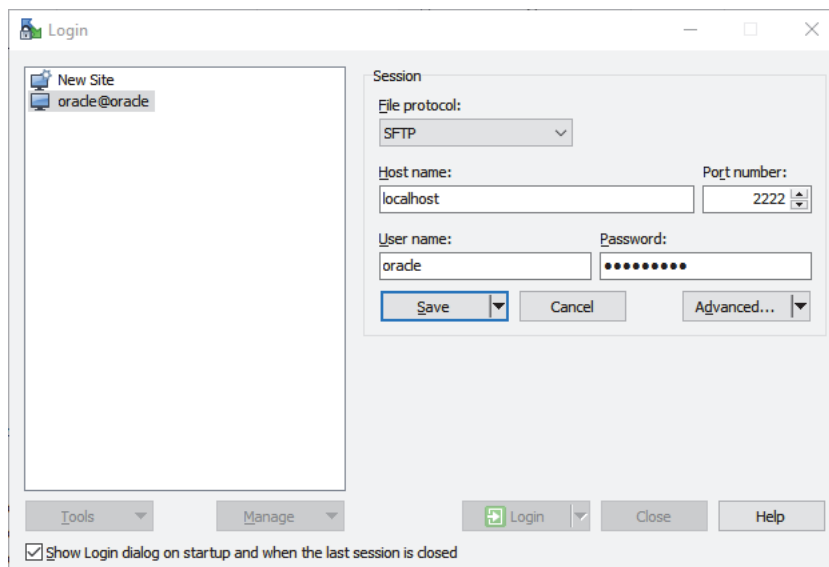
For providing input files for building the application, refer to the section, *Copying Files between the VM and the Host Desktop*.

Copying Files between the VM and the Host Desktop

Perform the following steps to share files and folders between the desktop and the VM.

1. Use an application like WinSCP to connect to the SSH port of the VM on 2222.
Enter the Username as: *oracle* and the Password as: *oracleov21*.

Figure 3–18 *Sharing Files*



2. The incoming FTP location inside the VM is:

`/oracle/rpas/RPAS/ftp_incoming`

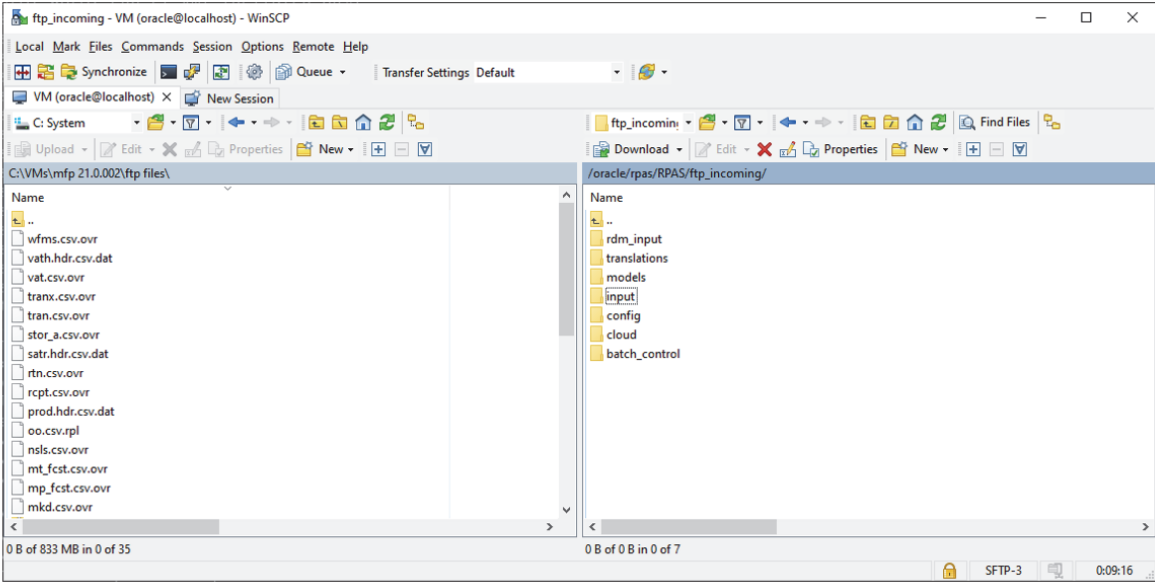
The outgoing FTP location inside the VM is:

`/oracle/rpas/RPAS/ftp_outgoing`

The VM still uses the incoming and outgoing FTP locations although now in the Oracle Cloud RPAS applications use object storage for incoming and outgoing locations.

Note: For more details about placing files in incoming location for application build, batch or other OAT tasks, refer to the *Oracle Retail Merchandise Financial Planning Cloud Service Release 21.0* documentation set.

Figure 3–19 FTP Locations



Users in the VM

The following users are present in the VM.

The password for all users is set to: *Orcl1234*.

Note: It is not possible to add new users to the VM.

User Label	User Name	Administrator
OCI Administrator	oci.admin	Yes
Admin User 2	user2	Yes
Admin User 3	user3	Yes
Admin User 4	user4	Yes
Admin User 5	user5	Yes
Admin User 6	user6	Yes
Admin User 7	user7	Yes
Admin User 8	user8	Yes
Admin User 9	user9	Yes
Admin User 10	user10	Yes

User Label	User Name	Administrator
Non-Admin User 1	nonadm1	No
Oracle Internal User	oracleintuser	Yes
Non-Admin User 2	nonadm2	No
Administrator	adm	Yes
Administrator1	adm1	Yes
Administrator2	adm2	Yes
Administrator4	adm4	Yes
Administrator7	adm7	Yes
Administrator10	adm10	Yes
Admin User 1	user1	Yes

Using SQL Developer

It is possible to connect a SQL developer running on the host machine to the database running in the VM.

Set the password for all the schema users as: *Orcl1234*

Enter the Service name as: *ORCLPDB1*

Figure 3–20 Database Connection

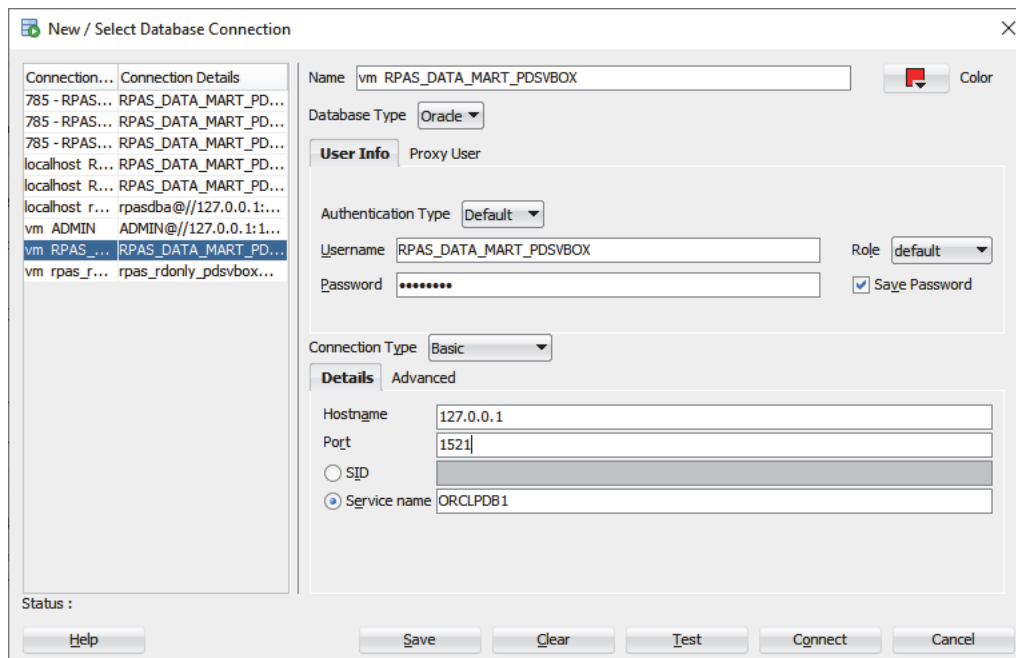


Table 3–1 lists the schema users

Table 3–1 Schema Users

Schema User	Username
rpas_data_mart	RPAS_DATA_MART_PDSVBOX

Table 3–1 (Cont.) Schema Users

Schema User	Username
rpas_patch_user	RPAS_PATCH_PDSVBOX
rpas_batch_user	RPAS_BATCH_PDSVBOX
rpas_dimload_user	RPAS_DIMLOAD_PDSVBOX
rpas_factload_user	RPAS_FACTLOAD_PDSVBOX
rpas_hiermgr_user	RPAS_HIERMGR_PDSVBOX
rpas_wkbk_user	RPAS_WKBK_PDSVBOX
rpas_etl_user	RPAS_ETL_PDSVBOX
rpas_rdonly_user	RPAS_RDONLY_PDSVBOX
rpas_report_user	RPAS_REPORT_PDSVBOX

Troubleshooting

If you have any of the following issues, follow the steps for troubleshooting:

- [Network Issues](#)
- [VirtualBox Error](#)
- [UI Login Issues](#)
- [SQL Developer Login Issues](#)

Network Issues

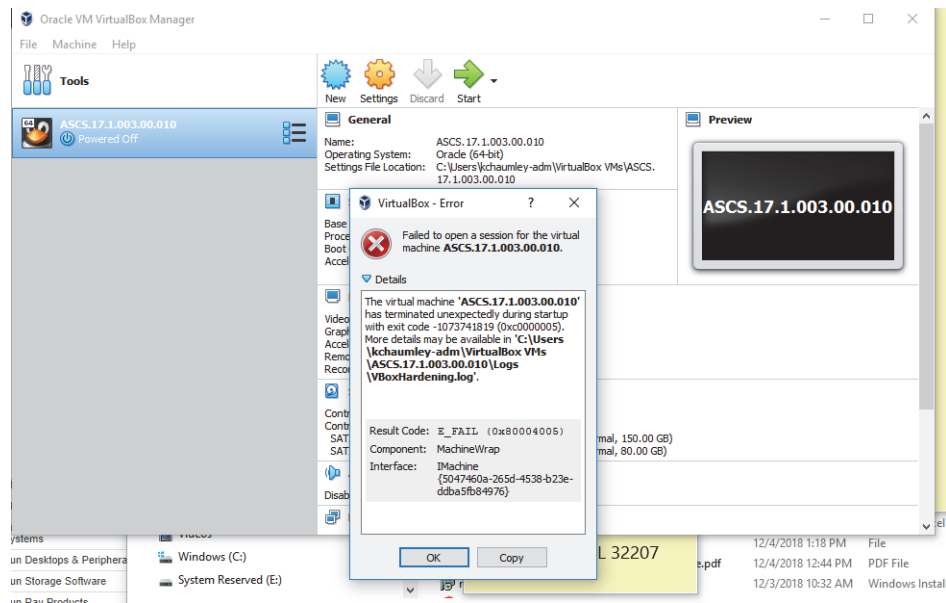
If you have many network interfaces you might have to make changes to Network Settings screen before starting the VM. The VM image has been tested only with Ethernet and Wi-Fi. If you use power line Ethernet or a network dongle or you have multiple network interface cards in your system you might need to make changes in the VM network settings screen.

Depending on your system configuration, you might need to enable additional adapters.

VirtualBox Error

If you receive the following error shown in [Figure 3–21](#) while starting the image, you might have an unsupported version of VirtualBox. Install the latest VirtualBox software.

Figure 3–21 VirtualBox Error



UI Login Issues

If you have trouble logging into the UI, check if port 8080 is being used by some other application on your host machine. Change the port mapping in the VM Network Setup screen and use the new port.

For any application related issues check the logs at this URL:

<http://localhost/logs/>

SQL Developer Login Issues

If you have trouble connecting to the database using SQL developer, check if port 1521 is being used. Change the port mapping in the VM Network Setup screen and use the new port.

Appendix: Generating the Configuration for Plug-in Options

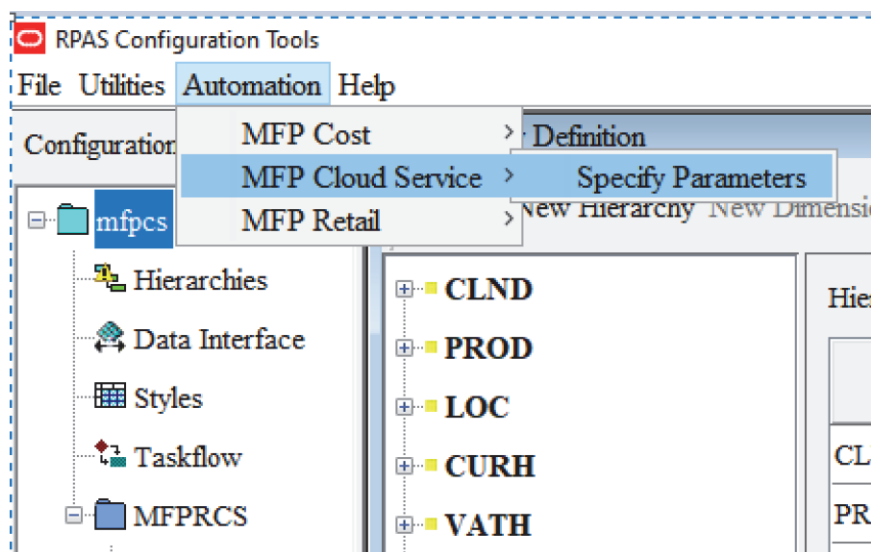
Merchandise Financial Planning Cloud Service supports generating different configurations using plug-in automation for different configuration options. Default configuration available in the Starter Kit includes Retail solution and with all plug-in-options enabled. If you want to use Cost configuration and/or use different plug-in options, then perform the following steps.

Steps to Generate MFP Cost Configuration

By default, without any selections if MFP GA is deployed it will only deploy the MFP Retail configuration. In order to deploy MFP Cost configuration, MFP Cost configuration needs to be generated from MFP Starter Kit.

1. Download the MFP_Starter_Kit.zip and unzip the content.
2. Open the RPAS Cloud Edition Configuration Tools from the Starter Kit and open the configuration **mfpcs** within the starter kit. Notice that configuration is MFP Retail with the solution name used in it is shown as **MFPRCS**.
3. From Automation, select **MFP Cloud Service** and then **Specify Parameters**.

Figure A-1 Specify Parameters

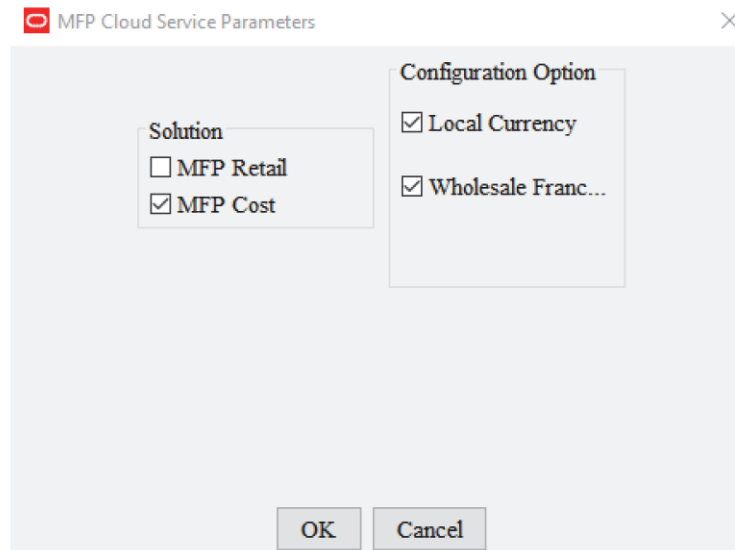


- From the Service Parameters dialog box, select **MFP Cost** and clear the **MFP Retail Solution**.

Select or clear any Configuration Options.

Click **OK**.

Figure A–2 Service Parameters



- Save the configuration and exit the RPAS Cloud Edition Configuration Tools.
- Open the Cygwin from where config tools was launched and then go to the bin directory.

```
cd $RIDE_HOME/bin;
```

- Run the following plug-in script to generate the MFP Cost configuration. In the following example **-c** should be followed with full cygwin path where you have unzipped the starter kit.

The example uses the directory: `/cygdrive/c/Oracle/MFP_Starter_Kit`.

- Run this script:

```
ra_auto_gen_config.ksh -c /cygdrive/c/Oracle/MFP_Starter_Kit -n mfpcs  
-clean -genAllFiles
```

The script should run and complete with non-zero return code as shown in [Figure A–3](#).

Figure A-3 Run the Script

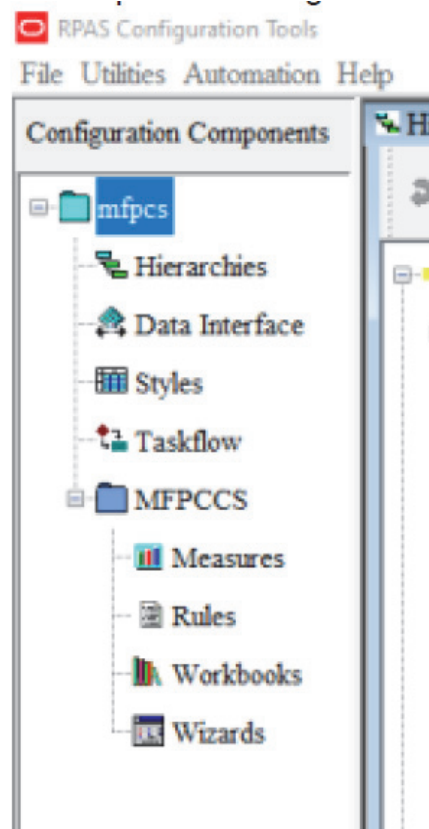
```

/cygdrive/c/Oracle/MFP_Starter_Kit/ConfigTools/bin
$ .xml' complete
18:51:23 : INFORMATION : ra_auto_gen_config.ksh[0] - Generate all files selected. Generating internal plugin data files.
18:51:24 : INFORMATION : ra_auto_gen_config.ksh[0] - _call executing command 'rm -rf /cygdrive/c/Oracle/MFP_Starter_Kit/batch_control'
18:51:24 : INFORMATION : ra_auto_gen_config.ksh[0] - _call of command 'rm -rf /cygdrive/c/Oracle/MFP_Starter_Kit/batch_control' complete
18:51:24 : INFORMATION : ra_auto_gen_config.ksh[0] - _call executing command 'mkdir -p /cygdrive/c/Oracle/MFP_Starter_Kit/batch_control'
18:51:25 : INFORMATION : ra_auto_gen_config.ksh[0] - _call of command 'mkdir -p /cygdrive/c/Oracle/MFP_Starter_Kit/batch_control' complete
18:51:25 : INFORMATION : ra_auto_gen_config.ksh[0] - _call executing command 'rm -rf /cygdrive/c/Oracle/MFP_Starter_Kit/json'
18:51:25 : INFORMATION : ra_auto_gen_config.ksh[0] - _call of command 'rm -rf /cygdrive/c/Oracle/MFP_Starter_Kit/json' complete
18:51:26 : INFORMATION : ra_auto_gen_config.ksh[0] - _call executing command 'mkdir -p /cygdrive/c/Oracle/MFP_Starter_Kit/json'
18:51:26 : INFORMATION : ra_auto_gen_config.ksh[0] - _call of command 'mkdir -p /cygdrive/c/Oracle/MFP_Starter_Kit/json' complete
18:51:26 : INFORMATION : ra_auto_gen_config.ksh[0] - _call executing command 'execPluginTask.sh MFPCS:com.oracle.rgbu.mfpcs.plugin.installer.MFP
.xml /cygdrive/c/Oracle/MFP_Starter_Kit/batch_control /cygdrive/c/Oracle/MFP_Starter_Kit/json'
18:51:38 : INFORMATION : ra_auto_gen_config.ksh[0] - _call of command 'execPluginTask.sh MFPCS:com.oracle.rgbu.mfpcs.plugin.installer.MFPCSDataG
ygdrive/c/Oracle/MFP_Starter_Kit/batch_control /cygdrive/c/Oracle/MFP_Starter_Kit/json' complete
18:51:38 : INFORMATION : ra_auto_gen_config.ksh[0] - ra_auto_gen_config.ksh completed.
18:51:38 : INFORMATION : ra_auto_gen_config.ksh[0] - Program completed successfully.
18:51:38 : INFORMATION : ra_auto_gen_config.ksh[0] - Exiting script with code: 0
18:51:39 : INFORMATION : ra_auto_gen_config.ksh[0] - Insufficient parameters to export log file package; skipping.

```

- Open the configuration using RPAS Cloud Edition Configuration Tools and verify that solution now shows as **MFPCS**.

Figure A-4 Verify the Solution



- After the solution is generated, zip the **config mfpcs** folder and name it as **mfpcs_config.zip**. It can be used during application build or patching of the configuration.

Note: You can implement on MFP Retail and then generate MFP Cost configuration and then patch it, but that patching option is allowed only if there are no extensibility changes. If you plan to use extensibility to customize template version of configuration, then you should decide on Retail or Cost type solution before making any of those extensibility specific changes.
