

**Oracle® Retail Category Management Planning
and Optimization/Macro Space Optimization
(CMPO/MSO)**

Installation Guide

Release 14.1.3

E76192-01

July 2016

E76192-01

Copyright © 2016, Oracle and/or its affiliates. All rights reserved.

Primary Author: Melissa Artley

This software and related documentation are provided under a license agreement containing restrictions on use and disclosure and are protected by intellectual property laws. Except as expressly permitted in your license agreement or allowed by law, you may not use, copy, reproduce, translate, broadcast, modify, license, transmit, distribute, exhibit, perform, publish, or display any part, in any form, or by any means. Reverse engineering, disassembly, or decompilation of this software, unless required by law for interoperability, is prohibited.

The information contained herein is subject to change without notice and is not warranted to be error-free. If you find any errors, please report them to us in writing.

If this is software or related documentation that is delivered to the U.S. Government or anyone licensing it on behalf of the U.S. Government, then the following notice is applicable:

U.S. GOVERNMENT END USERS: Oracle programs, including any operating system, integrated software, any programs installed on the hardware, and/or documentation, delivered to U.S. Government end users are "commercial computer software" pursuant to the applicable Federal Acquisition Regulation and agency-specific supplemental regulations. As such, use, duplication, disclosure, modification, and adaptation of the programs, including any operating system, integrated software, any programs installed on the hardware, and/or documentation, shall be subject to license terms and license restrictions applicable to the programs. No other rights are granted to the U.S. Government.

This software or hardware is developed for general use in a variety of information management applications. It is not developed or intended for use in any inherently dangerous applications, including applications that may create a risk of personal injury. If you use this software or hardware in dangerous applications, then you shall be responsible to take all appropriate fail-safe, backup, redundancy, and other measures to ensure its safe use. Oracle Corporation and its affiliates disclaim any liability for any damages caused by use of this software or hardware in dangerous applications.

Oracle and Java are registered trademarks of Oracle and/or its affiliates. Other names may be trademarks of their respective owners.

Intel and Intel Xeon are trademarks or registered trademarks of Intel Corporation. All SPARC trademarks are used under license and are trademarks or registered trademarks of SPARC International, Inc. AMD, Opteron, the AMD logo, and the AMD Opteron logo are trademarks or registered trademarks of Advanced Micro Devices. UNIX is a registered trademark of The Open Group.

This software or hardware and documentation may provide access to or information about content, products, and services from third parties. Oracle Corporation and its affiliates are not responsible for and expressly disclaim all warranties of any kind with respect to third-party content, products, and services unless otherwise set forth in an applicable agreement between you and Oracle. Oracle Corporation and its affiliates will not be responsible for any loss, costs, or damages incurred due to your access to or use of third-party content, products, or services, except as set forth in an applicable agreement between you and Oracle.

Value-Added Reseller (VAR) Language

Oracle Retail VAR Applications

The following restrictions and provisions only apply to the programs referred to in this section and licensed to you. You acknowledge that the programs may contain third party software (VAR applications) licensed to Oracle. Depending upon your product and its version number, the VAR applications may include:

- (i) the **MicroStrategy** Components developed and licensed by MicroStrategy Services Corporation (MicroStrategy) of McLean, Virginia to Oracle and imbedded in the MicroStrategy for Oracle Retail Data Warehouse and MicroStrategy for Oracle Retail Planning & Optimization applications.
- (ii) the **Wavelink** component developed and licensed by Wavelink Corporation (Wavelink) of Kirkland, Washington, to Oracle and imbedded in Oracle Retail Mobile Store Inventory Management.
- (iii) the software component known as **Access Via™** licensed by Access Via of Seattle, Washington, and imbedded in Oracle Retail Signs and Oracle Retail Labels and Tags.
- (iv) the software component known as **Adobe Flex™** licensed by Adobe Systems Incorporated of San Jose, California, and imbedded in Oracle Retail Promotion Planning & Optimization application.

You acknowledge and confirm that Oracle grants you use of only the object code of the VAR Applications. Oracle will not deliver source code to the VAR Applications to you. Notwithstanding any other term or condition of the agreement and this ordering document, you shall not cause or permit alteration of any VAR Applications. For purposes of this section, "alteration" refers to all alterations, translations, upgrades,

enhancements, customizations or modifications of all or any portion of the VAR Applications including all reconfigurations, reassembly or reverse assembly, re-engineering or reverse engineering and recompilations or reverse compilations of the VAR Applications or any derivatives of the VAR Applications. You acknowledge that it shall be a breach of the agreement to utilize the relationship, and/or confidential information of the VAR Applications for purposes of competitive discovery.

The VAR Applications contain trade secrets of Oracle and Oracle's licensors and Customer shall not attempt, cause, or permit the alteration, decompilation, reverse engineering, disassembly or other reduction of the VAR Applications to a human perceivable form. Oracle reserves the right to replace, with functional equivalent software, any of the VAR Applications in future releases of the applicable program.

Contents

Send Us Your Comments	vii
Preface	ix
Audience	ix
Documentation Accessibility	ix
Related Documentation	ix
Customer Support	x
Review Patch Documentation	x
Improved Process for Oracle Retail Documentation Corrections	x
Oracle Retail Documentation on the Oracle Technology Network	x
Conventions	xi
 1 Introduction	
About This Document	1-1
Hardware and Software Requirements	1-1
Supported Oracle Retail Products	1-2
Requesting Infrastructure Software	1-2
Road Map for Installing CMPO/MSO	1-2
 2 Full Installation on UNIX Environments	
Preparation	2-1
Environment Variable Setup Script	2-1
Additional Environment Variables	2-2
Alternate Domain Name	2-2
Downloading and Extracting the CMPO/MSO Media Pack	2-2
Installing CMPO/MSO	2-3
Postinstallation Configuration	2-10
Environment Variables	2-10
Online Help File	2-10
Configuration Files for the RPAS Fusion Client	2-10
Taskflow Files	2-11
 3 Patch Installation	
Upgrade Prerequisites	3-1

Upgrade Process	3-1
Upgrade and Patch to RPAS Release 14.0 or Later	3-1
For the PC.....	3-2
For the Server.....	3-2

A Appendix: Installation Order

Enterprise Installation Order	A-1
--	------------

Send Us Your Comments

Oracle Retail Category Management Planning and Optimization/Macro Space Optimization) Installation Guide, Release 14.1.3.

Oracle welcomes customers' comments and suggestions on the quality and usefulness of this document.

Your feedback is important, and helps us to best meet your needs as a user of our products. For example:

- Are the implementation steps correct and complete?
- Did you understand the context of the procedures?
- Did you find any errors in the information?
- Does the structure of the information help you with your tasks?
- Do you need different information or graphics? If so, where, and in what format?
- Are the examples correct? Do you need more examples?

If you find any errors or have any other suggestions for improvement, then please tell us your name, the name of the company who has licensed our products, the title and part number of the documentation and the chapter, section, and page number (if available).

Note: Before sending us your comments, you might like to check that you have the latest version of the document and if any concerns are already addressed. To do this, access the Online Documentation available on the Oracle Technology Network Web site. It contains the most current Documentation Library plus all documents revised or released recently.

Send your comments to us using the electronic mail address:
retail-doc_us@oracle.com.

Please give your name, address, electronic mail address, and telephone number (optional).

If you need assistance with Oracle software, then please contact your support representative or Oracle Support Services.

If you require training or instruction in using Oracle software, then please contact your Oracle local office and inquire about our Oracle University offerings. A list of Oracle offices is available on our Web site at <http://www.oracle.com>.

Preface

Oracle Retail Installation Guides contain the requirements and procedures that are necessary for the retailer to install Oracle Retail products.

Audience

This Installation Guide is for the following audiences:

- Database administrators
- System analysts and designers
- Integrators and implementation staff

Documentation Accessibility

For information about Oracle's commitment to accessibility, visit the Oracle Accessibility Program website at <http://www.oracle.com/pls/topic/lookup?ctx=acc&id=docacc>.

Access to Oracle Support

Oracle customers that have purchased support have access to electronic support through My Oracle Support. For information, visit <http://www.oracle.com/pls/topic/lookup?ctx=acc&id=info> or visit <http://www.oracle.com/pls/topic/lookup?ctx=acc&id=trs> if you are hearing impaired.

Related Documentation

For more information, see the following documents in the Oracle Retail Category Management Planning and Optimization/Macro Space Optimization Release 14.1.3 documentation set:

- *Oracle Retail Category Management Planning and Optimization/Macro Space Optimization Installation Guide*
- *Oracle Retail Category Management Planning and Optimization/Macro Space Optimization Release Notes*
- Oracle Retail Predictive Application Server documentation

The following documentation may also be needed when implementing Category Management Planning and Optimization/Macro Space Optimization:

- *Oracle Retail Planning Batch Script Architecture Implementation Guide*

Customer Support

To contact Oracle Customer Support, access My Oracle Support at the following URL:

<https://support.oracle.com>

When contacting Customer Support, please provide the following:

- Product version and program/module name
- Functional and technical description of the problem (include business impact)
- Detailed step-by-step instructions to re-create
- Exact error message received
- Screen shots of each step you take

Review Patch Documentation

When you install the application for the first time, you install either a base release (for example, 14.1) or a later patch release (for example, 14.1.3). If you are installing the base release, additional patch, and bundled hot fix releases, read the documentation for all releases that have occurred since the base release before you begin installation. Documentation for patch and bundled hot fix releases can contain critical information related to the base release, as well as information about code changes since the base release.

Improved Process for Oracle Retail Documentation Corrections

To more quickly address critical corrections to Oracle Retail documentation content, Oracle Retail documentation may be republished whenever a critical correction is needed. For critical corrections, the republication of an Oracle Retail document may at times not be attached to a numbered software release; instead, the Oracle Retail document will simply be replaced on the Oracle Technology Network Web site, or, in the case of Data Models, to the applicable My Oracle Support Documentation container where they reside.

This process will prevent delays in making critical corrections available to customers. For the customer, it means that before you begin installation, you must verify that you have the most recent version of the Oracle Retail documentation set. Oracle Retail documentation is available on the Oracle Technology Network at the following URL:

<http://www.oracle.com/technetwork/documentation/oracle-retail-100266.html>

An updated version of the applicable Oracle Retail document is indicated by Oracle part number, as well as print date (month and year). An updated version uses the same part number, with a higher-numbered suffix. For example, part number E123456-02 is an updated version of a document with part number E123456-01.

If a more recent version of a document is available, that version supersedes all previous versions.

Oracle Retail Documentation on the Oracle Technology Network

Oracle Retail product documentation is available on the following web site:

<http://www.oracle.com/technetwork/documentation/oracle-retail-100266.html>

(Data Model documents are not available through Oracle Technology Network. You can obtain them through My Oracle Support.)

Conventions

The following text conventions are used in this document:

Convention	Meaning
boldface	Boldface type indicates graphical user interface elements associated with an action, or terms defined in text or the glossary.
<i>italic</i>	Italic type indicates book titles, emphasis, or placeholder variables for which you supply particular values.
<code>monospace</code>	Monospace type indicates commands within a paragraph, URLs, code in examples, text that appears on the screen, or text that you enter.

Introduction

This document provides instructions on installing Oracle Retail Category Management Planning and Optimization/Macro Space Optimization (CMPO/MSO). It provides detailed instructions on how to install a Category Management Planning and Optimization/Macro Space Optimization domain using a configuration created with the RPAS Configuration Tools. This document does not describe how to create the actual configuration.

Supplemental installation guides are referenced in this document. The *Oracle Retail Predictive Application Server Installation Guide* and *Oracle Retail Predictive Application Server Configuration Tools User Guide* must be obtained prior to beginning the installation process. Read these documents in their entirety before beginning the installation.

About This Document

This document contains information for full and patch installations:

- [Chapter 2, "Full Installation on UNIX Environments"](#). Refer to this section if you are performing a full installation.
- [Chapter 3, "Patch Installation"](#). Refer to this section if you are performing an upgrade to your configuration.
- [Appendix A, "Appendix: Installation Order"](#). Refer to this section for the installation order of RPAS applications.

Read this entire guide before beginning the installation process to ensure you understand the installation process and have all the necessary documentation, hardware, and software available.

Hardware and Software Requirements

[Table 1–1](#) provides information about the current release.

Table 1–1 Hardware and Software Requirements

Requirement	Details
Supported RPAS Version	14.1.3
Oracle Retail Batch Script Architecture (BSA)	14.1.3

Table 1–1 (Cont.) Hardware and Software Requirements

Requirement	Details
Required Software	<p>Java Development Kit (JDK) 1.7.0_111</p> <p>Note: There are specific JDK versions needed for each of the supported operating systems for the Oracle Retail Predictive Application Server (RPAS). For the list of JDK versions, see the <i>Oracle Retail Predictive Application Server Installation Guide</i>.</p> <p>Note: When installing Java, avoid enabling AutoUpdate because it may update the Java version without prompting.</p>

Note: RPAS applications, such as Category Management Planning and Optimization/Macro Space Optimization, run on the Oracle Retail Predictive Application Server (RPAS) platform. For information about the hardware and software requirements for RPAS, see the supported RPAS version of the *Oracle Retail Predictive Application Server Installation Guide*.

Verify that the UNIX operating system is updated to the currently supported version, which can be found in the “Hardware and Software Requirements” section of the supported RPAS version of the *Oracle Retail Predictive Application Server Installation Guide*.

Supported Oracle Retail Products

CMPO/MSO integrates with Oracle Retail Advanced Science Engine™ (ORASE).

Requesting Infrastructure Software

If you are unable to find the necessary version of the required Oracle infrastructure software (database server, application server, WebLogic, and so on) on the Oracle Software Delivery Cloud, you should file a non-technical ‘Contact Us’ Service Request (SR) and request access to the media. For instructions on filing a non-technical SR, see My Oracle Support Note 1071023.1 – *Requesting Physical Shipment or Download URL for Software Media*.

Road Map for Installing CMPO/MSO

This guide explains how you can install and set up the CMPO/MSO application. In order to install CMPO/MSO for production, you must perform the following tasks in a sequence:

Task	Description
<i>Pre-installation Tasks</i>	
1.	Install and set up the RPAS Infrastructure. For more information, refer to the <i>Oracle Retail Predictive Application Server Installation Guide</i> .
2.	Install and set up the RPAS Fusion Client. For more information, refer to the <i>Oracle Retail Predictive Application Server Installation Guide</i> .
3.	Oracle Retail Batch Scripting Architecture (BSA) must be installed prior to installing CMPO/MSO. For information about installing BSA, see the <i>Oracle Retail Batch Script Architecture Implementation Guide</i> .

Task	Description
<i>Installation Task</i>	
4.	Access the CMPOMSO Installation software and install the application. For more information, see Chapter 2, "Full Installation on UNIX Environments" .

Note: Refer to chapter, “Creating a Multi-solution Taskflow” in the *Oracle Retail Predictive Application Server Configuration Tools User Guide* for information about the Multi-solution Taskflow.

Full Installation on UNIX Environments

The installation of the server-side RPAS components on UNIX operating systems is accomplished using Java-based installation programs that are included with the installation package.

The Category Management Planning and Optimization/Macro Space Optimization Installer automates the following:

- Installation of the CMPO/MSO GA configuration.
- Installation of the CMPO/MSO configuration for the RPAS Fusion Client. For more information on installing the RPAS Fusion Client, refer to the *Oracle Retail Predictive Application Server Installation Guide*.
- Creation of a sample CMPO/MSO domain.

This document assumes that the RPAS installer process (from the *Oracle Retail Predictive Application Server Installation Guide*) has been completed prior to using the CMPO/MSO installer.

Preparation

The RPAS server components required prior to this installation process are available from Oracle's E-Delivery web site, <http://edelivery.oracle.com>, and My Oracle Support, <https://support.oracle.com>.

Environment Variable Setup Script

Before running the solution installer, source the `retaillogin.ksh` script. The script is located in the root of the base directory where RPAS was installed unless the default was overwritten when specifying directory paths.

Source the script from inside the directory where the script is located:

```
. ./retaillogin.ksh
```

Or, include the full path after the period and space ". ":

```
. /<base_directory>/retaillogin.ksh
```

Notes: The preceding period and space (". ") must be included at the beginning of the command when running the script.

Include this path and script in the `.profile` in your home directory (`~/profile`) if you want to have this environment setup script run during login.

This script sets up environment variables, such as `RPAS_HOME` and `RIDE_HOME`, which are required for RPAS to run properly.

Additional Environment Variables

In addition to the running of `retaillogin.ksh`, export the following environment variable prior to starting the installer.

```
export RPAS_JAVA_CLASSPATH=$RPAS_HOME/applib/aaijni.jar:$RPAS_
HOME/applib/aaiCatMan.jar:$RPAS_HOME/applib/rseCatMan.jar:$RPAS_
HOME/lib/rpasjni.jar:$RPAS_HOME/lib/oracleRpasUtils.jar
```

Note: There are additional Java environment variables that must be set for your particular operation system. These variables are the same for all applications on RPAS. See the “Java Environment” section of the *Oracle Retail Predictive Application Server Installation Guide* for these environment variables.

Alternate Domain Name

Using the RPAS installer process, the built domain name is `catman`. You can change the default domain name with the following procedure:

1. Locate the file, `bin/environment.ksh`.
2. Update this line to reflect the new name of the domain:

```
export CM_MASTERDOMAIN=$CM_DOMAINHOME/catman
```

For example:

```
export CM_MASTERDOMAIN=$CM_DOMAINHOME/catman_new
```

3. The install should run normally and produce a domain under the new name.

Note: Other standard RPAS files will need to be updated to reflect the new domain location, For example, `globaldomainconfig.xml`, `Foundation.xml`, and so on.

Downloading and Extracting the CMPO/MSO Media Pack

The following procedure provides information about downloading and extracting the CMPO/MSO media pack and its contents.

1. Create a directory to store the CMPO/MSO media pack on the target server. This directory is referred to as **[Category Management Installation]**. It is the location where the CMPO/MSO installation routine is run.
2. Download and extract the media pack to this location. Once extracted, two directories appear, **CDROM** and **DOCS**.
 - The **CDROM** folder contains the `catman.zip` file. This file contains the CMPO/MSO solution.
 - The **DOCS** folder contains the CMPO/MSO documentation.

Note: Files contained within the installation package are intended to be used by the installer only.

Installing CMPO/MSO

Perform the following steps to install CMPO/MSO

Note: This product's installer includes Ant. If Ant is already installed on your system and is version 1.6.5 or earlier, then you must run `unset ANT_HOME` on the command line to ensure that the installer uses the included version. The `unset ANT_HOME` command must be run before `./install.sh`.

1. Extract the CMPO/MSO installer from the [Category Management Installation] directory.

```
cd CDROM  
unzip catman.zip
```

2. From the [Category Management Installation]/CDROM directory, run the following commands to run the CMPO/MSO installer:

```
cd catman  
./install.sh
```

Note: The command must be run with the preceding period and slash (`./`).

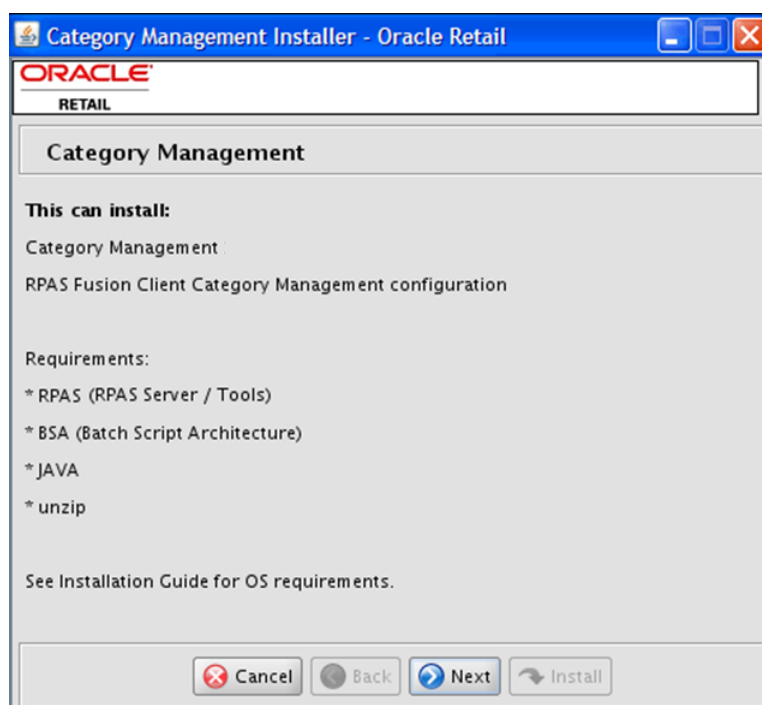
If this process is being run on an X-Windows emulator (such as Exceed), graphical user interface to the Installer opens. If you are running in console mode through a terminal emulator, enter `./install.sh` on the text interface.

In both cases, the requested information is identical. In the GUI, you may be shown a check box to signal whether you want a component installed; in text mode, you are prompted for a response of **true** or **false**.

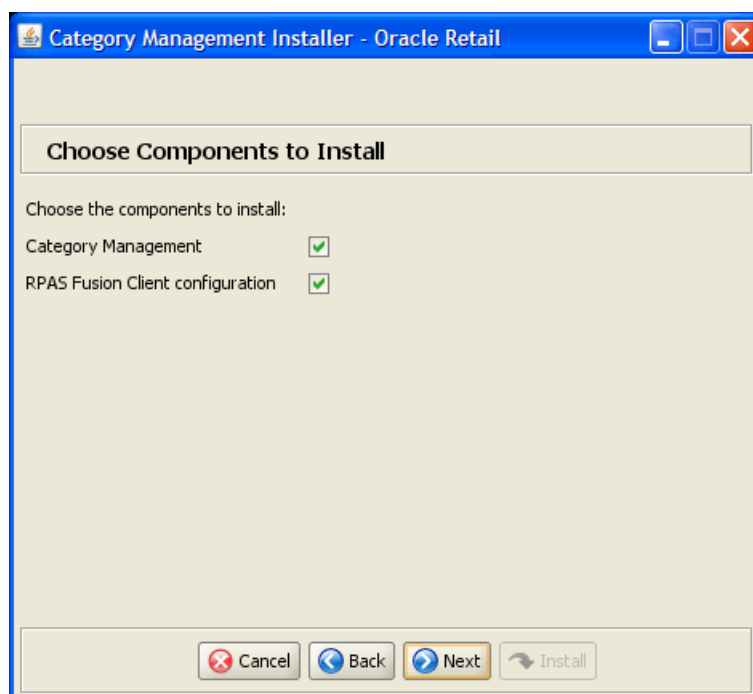
Note: In text mode, the default value displays in square brackets []. To use the default value and continue, press **Enter**. If you want to use a different value, enter the new value. When prompted to create a directory, respond with **yes** and press **Enter**.

3. The [CMPO/MSO Installer Window](#) opens and displays the components that are installed during installation process and the required components.

Click **Next** to continue.

Figure 2–1 CMPO/MSO Installer Window

4. The [Choose Components to Install Window](#) opens.

Figure 2–2 Choose Components to Install Window

Select one or both of the following options:

- **Category Management** — Select this option to install the Category Management domain.

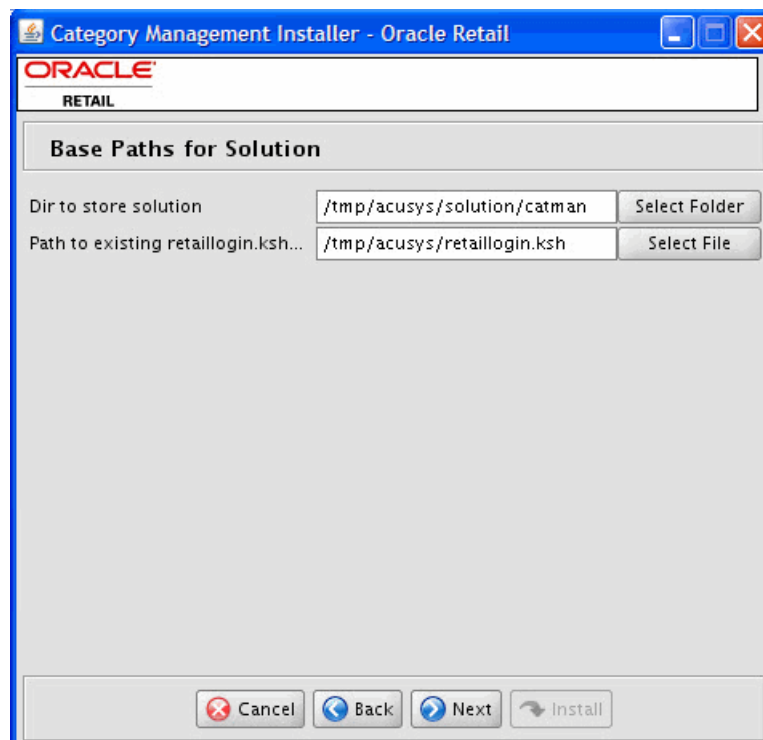
- **RPAS Fusion Client configuration** — Select this option to install the RPAS Fusion Client configuration for CMPO/MSO. For more information on the configuration files included for the RPAS Fusion Client, see [Configuration Files for the RPAS Fusion Client](#).

Note: If you do not want to install the RPAS Fusion Client configuration, clear this check box and skip steps 7 and 8.

Click **Next** to continue.

5. The [Base Paths for Solution Window](#) opens.

Figure 2–3 Base Paths for Solution Window



Enter the relevant information in the following fields:

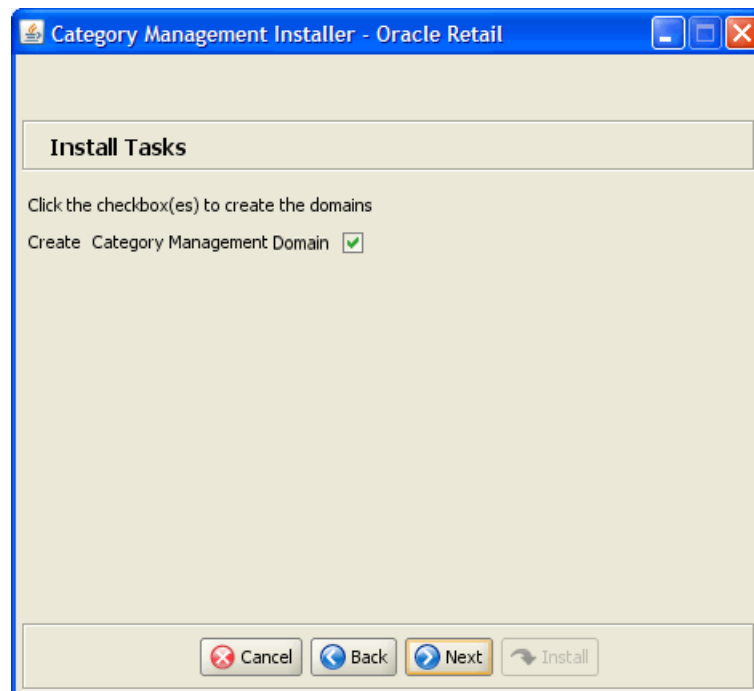
- **Dir to store solution** — Enter the directory path where your solution should be stored.
- **Path to retaillogin.ksh script** — Enter the path and file name to the retaillogin.ksh script created during RPAS installation.

Note: Ensure that the installation paths are located outside the installer directory [**CMPOMSO Installation**].

If this directory does not exist, the Installer prompts you to create it.

Click **Next** to continue.

6. The [Install Tasks Window](#) opens.

Figure 2–4 Install Tasks Window

Select or clear the **Create Category Management Domain** option:

- To create the CMPO/MSO domain, select the **Create Category Management Domain** option, which is the default.

Note: Domain builds use the environment specified in the `retaillogin.ksh` environment setup script. If you change any environment details, edit the `retaillogin.ksh` script and any subsequent scripts called by `retaillogin.ksh`.

For more information about the `retaillogin.ksh` script, see the [Environment Variable Setup Script](#) section.

- To install all required components to support the CMPO/MSO domain, but not create the actual domain, clear the check box.

Click **Next** to continue.

7. The [Fusion Location Information Window](#) opens.

Figure 2–5 Fusion Location Information Window

Enter the relevant information in the following fields:

Field	Description
Enter the number of RPAS Fusion Client servers to install these configurations on: (1-4)	Enter the number of servers running the RPAS Fusion Client where you want to install the CMPO/MSO configuration. In case the RPAS Fusion Client is running on a single server, enter <i>1</i> . If you have a clustered installation, you can enter up to four servers
Enter the RPAS server hostname:	Enter the hostname of the RPAS server.
Enter the RPAS server port:	Enter the port number of the RPAS server.
RPAS Solution Path	Enter the location of the RPAS domain for CMPO/MSO.

Note: The Fusion Location Information windows open when you select the RPAS Fusion Client configuration check box on the [Choose Components to Install Window](#).

If you are not installing the RPAS Fusion Client configuration, proceed to step 9.

Click **Next** to continue.

8. Based on the number of servers you entered, the [Fusion Location Information \(Details\) Window](#) opens.

Figure 2–6 Fusion Location Information (Details) Window

Category Management Installer - Oracle Retail

Fusion Location Information

Enter the details for RPAS Fusion Client #1

Hostname or IP

Configuration Directory

Enter both username and password if you want to save the login credentials to the secure wallet. Otherwise, login credentials will be retrieved from the wallet based on the user alias.

Login username

Login password

Enter an alias for the username.

Enter the server details in the following set of fields for each configuration:

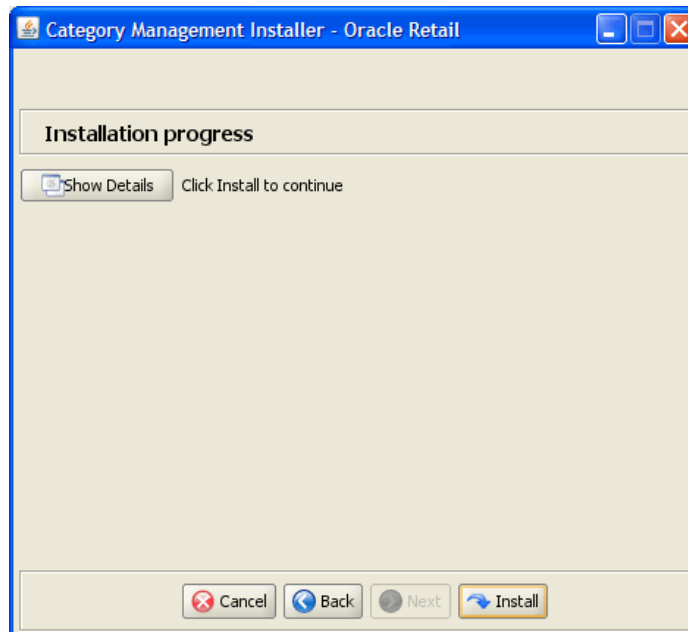
Field	Description
Hostname or IP	Enter the host name or IP address of the server where the RPAS Fusion Client is installed.
Configuration Directory	Enter the location of the config directory available at the location where the RPAS Fusion Client is installed.
Login username	Enter the user name to log on to the server where the RPAS Fusion Client is installed.
Login password	Enter the password associated with the user name.
Login username alias	Specify an alias name for the administrative user. Specifying an alias name for the administrative user enhances the security for the application. When left blank, the alias name defaults to the administrative user name.

Note: Information such as user credentials for the RPAS Fusion Client is encrypted and stored in a secure location in the application installation directory. This location is called the Oracle Wallet.

When the installation starts, the administrative user credentials are retrieved from the Oracle Wallet based on the alias name specified in this window.

Click **Next** to continue.

9. The [Installation Progress Window](#) opens. To start the installation, click **Install**.

Figure 2–7 Installation Progress Window

This window also displays the progress of the installation routine. Click **Show Details** to view the log output as the installation is performed. If you do not select to view the details, a graphical representation of the installation steps displays. As each step is completed, the color changes to show you the progress.

You can toggle between detailed mode at any time during or after the installation.

10. When the installation has finished, the Finished message displays. Click **OK**.
11. To view the installation details, click **Show Details**. The window displays two tabs, the Output tab and the Error tab. It is recommended that you review these tabs for any issues that may have occurred during the installation process.

If you want to view the log again at a later date, a text copy is saved in the directory [CMPOMSO Installation]. The log file is named based on the product and timestamp, followed by the .log extension.

Created as part of this process is the `make_domain.catman` file located in [Solution Install Dir] entered previously. This file contains the required parameters needed to support the domain installation. If necessary, this file may be modified if the default parameters are not appropriate for your particular environment.

Note: When reviewing Installer output or logs, you may see the following message: *[scp] Caught an exception, leaving main loop due to Socket closed*. This message is harmless and does not indicate failure.

Note: The domain install process may also include postinstallation data loading scripts specific to the CMPO/MSO configuration. These scripts, if present, may also be modified.

For additional information on installing RPAS domains manually, see the *Oracle Retail Predictive Application Server Installation Guide*.

12. Click **Exit** to close the installer.

Postinstallation Configuration

Before starting the DomainDaemon, you must first set the following environment variables.

Environment Variables

Set your CM_HOME environment variable to the directory specified for the Dir to store solution path used in the installer

To do this, either in shell or with additions to your .profile, add:

```
export CM_HOME=[Dir to store solution path]
```

Online Help File

If you are on AIX and you have re-installed CMPO/MSO, you must edit a help file to use the CMPO/MSO online help in the RPAS Fusion Client.

Manually edit the [fusion client installation dir]/config/ohwconfig.xml file by removing the following duplicate line:

```
<helpSet xmlns="" id="<shortProductName>"  
location="<shortProductName>/<shortProductName>-help.hs" />
```

Caution: If this duplicate line is not removed, a “500 Page Not Found” error occurs when attempting to access the online help in the RPAS Fusion Client.

Configuration Files for the RPAS Fusion Client

This section describes the optional installation method that involves setting up the RPAS Fusion Client configuration for the CMPO/MSO configuration. If you chose to install the Fusion Client configuration files using the CMPO/MSO installer, you can skip this section.

Note: Before proceeding, ensure that you have appropriate access privileges on the server running the RPAS Fusion Client.

During the CMPO/MSO installation, these files are automatically copied over (when the Configure Fusion Client option is selected) to the configuration directory where the RPAS Fusion Client is installed. The installation also ensures that the following RPAS Fusion Client configuration files are updated to reflect the CMPO/MSO installation:

- **Foundation.xml** - Located in the [RPAS Fusion Client Installation]/ config/rpas directory. This XML file includes the domain configuration available for use with the RPAS Fusion Client.

Note: For more information on the Foundation.xml file, refer to the *Oracle Retail Predictive Application Server Installation Guide* and the *Oracle Retail Predictive Application Server Administration Guide for the Fusion Client*.

If you do not install the Fusion Client configuration files during the CMPO/MSO installation, you can choose to do one of the following tasks:

- Run the CMPO/MSO installer again, and select to install only the RPAS Fusion Client configuration.
- Run the RPAS Fusion Client installer again, and specify the CMPO/MSO domain configuration. For more information on the RPAS Fusion Client installation, refer to the *Oracle Retail Predictive Application Server Installation Guide*.
- Configure the RPAS Fusion Client for CMPO/MSO manually. For more information, see the “Configuring Additional Domains” section in the *Oracle Retail Predictive Application Server Administration Guide for the Fusion Client*.

Taskflow Files

This section provides information about the files needed for taskflow configuration.

If you selected the option to build a domain, you will find two taskflow files (taskflow.xml and the taskflowBundle.properties resource file) in the fusionClient subdirectory within the domain. For information about how to use these files to configure the Multi-solution Taskflow, refer to the section, “Postinstallation Configuration” in the *Oracle Retail Predictive Application Server Administration Guide for the Fusion Client*.

If you selected the option to install the fusion client configuration, the translation files for the taskflow have been copied to [RPAS Fusion Client Installation]/resources. For information about how to use these files with the Multi-solution Taskflow, refer to the section, “Creating a Multi-solution Taskflow” in the *Oracle Retail Predictive Application Server Configuration Tools User Guide*.

Patch Installation

This chapter describes how to upgrade Category Management Planning and Optimization/Macro Space Optimization from a previous release to Release 14.1.3.

Note: This version of CMPO/MSO is upgradeable from release 14.0 or later.

Upgrade Prerequisites

In order to upgrade CMPO/MSO, first verify the following criteria for the RPAS system:

- Verify that the UNIX operating system is updated to the currently supported version. Refer to the “Hardware and Software Requirements” section of the *Oracle Retail Predictive Application Server Installation Guide*.
- Verify that the environment variables are correctly set for both the server and PC; if they are not, follow these instructions to set them:
 - Change directories to the original RPAS installation directory (such as the one created by the most recent installer), and run `retaillogin.ksh` to set all environment variables. For example:

```
$ cd /retail
$ . ./retaillogin.ksh
```

Notes: After you have run the script, verify that the environment variables all point to the correct locations on your environment.

If you have updated Java since the last installation of RPAS, verify that the `JAVA_HOME` path is correct. If not, update your `retaillogin.ksh` script and source it again as previously outlined.

Upgrade Process

The following process outlines how to upgrade CMPO/MSO to the latest version using the RPAS Configuration Tools.

Upgrade and Patch to RPAS Release 14.0 or Later

The following process outlines how to upgrade CMPO/MSO to the current version using the RPAS Configuration Tools.

For the PC

Follow these instructions for the PC to upgrade to the current version:

1. Open RPAS Configuration Tools.
2. In RPAS Configuration Tools, load your previous configuration of CMPO/MSO:
 - a. From the Configuration Tools File menu, select **Open**.
 - b. From the Open window, locate the configuration file and click **Open**.
3. If your configuration requires updating, dialog boxes will prompt you to upgrade. Follow the instructions given in the dialog boxes.
4. In the RPAS Configuration Tools File menu, click **Save** to save the configuration.
5. Zip the configuration in Cygwin and transfer the .zip file to the RPAS server.

For the Server

Follow these instructions for the server to upgrade to the current version:

1. Upgrade the RPAS server and the RPAS Fusion Client configuration by running the installer:
 - a. Begin the installer as described in the [Installing CMPO/MSO](#) section.
 - b. Complete steps 1-5.
 - c. At step 6, on the [Install Tasks Window](#), clear the **Category Domain** option.
 - d. Finish the remaining steps of the installer.
2. Unzip the updated configuration and note where it is saved.
3. Upgrade your CMPO/MSO domain to a 14.1.3 domain. Run one of the following commands:

To Upgrade:	Run:
With no change to styles	patch_cm_keepformats.ksh
And remove and rebuild the saved styles in the domain. (This calls rpaInstall with the -updatestyles option.)	patch_cm_deleteformats.ksh

Appendix: Installation Order

This section provides a guideline for the order in which the Oracle Retail applications should be installed. If a retailer has chosen to use only some of the applications, the order is still valid, less the applications not being installed.

Note: The installation order is not meant to imply integration between products.

Enterprise Installation Order

1. Oracle Retail Merchandising System (RMS), Oracle Retail Trade Management (RTM)
2. Oracle Retail Sales Audit (ReSA)
3. Oracle Retail Extract, Transform, Load (RETL)
4. Oracle Retail Active Retail Intelligence (ARI)
5. Oracle Retail Warehouse Management System (RWMS)
6. Oracle Retail Invoice Matching (ReIM)
7. Oracle Retail Price Management (RPM)

Note: During installation of RPM, you are asked for the RIBforRPM provider URL. Since RIB is installed after RPM, make a note of the URL you enter. If you need to change the RIBforRPM provider URL after you install RIB, you can do so by editing the `remote_service_locator_info_ribserver.xml` file.

8. Oracle Retail Allocation
9. Oracle Retail Central Office (ORCO)
10. Oracle Retail Returns Management (ORRM)
11. Oracle Retail Back Office (ORBO)

12. Oracle Retail Store Inventory Management (SIM)

Note: During installation of SIM, you are asked for the RIB provider URL. Since RIB is installed after SIM, make a note of the URL you enter. If you need to change the RIB provider URL after you install RIB, you can do so by editing the `remote_service_locator_info_ribserver.xml` file.

- 13. Oracle Retail Predictive Application Server (RPAS)**
- 14. Oracle Retail Demand Forecasting (RDF)**
- 15. Oracle Retail Category Management Planning and Optimization/Macro Space Optimization (CMPO/MSO)**
- 16. Oracle Retail Replenishment Optimization (RO)**
- 17. Oracle Retail Analytic Parameter Calculator Replenishment Optimization (APC-RO)**
- 18. Oracle Retail Regular Price Optimization (RPO)**
- 19. Oracle Retail Merchandise Financial Planning (MFP)**
- 20. Oracle Retail Size Profile Optimization (SPO)**
- 21. Oracle Retail Assortment Planning (AP)**
- 22. Oracle Retail Item Planning (IP)**
- 23. Oracle Retail Item Planning Configured for COE (IP COE)**
- 24. Oracle Retail Advanced Inventory Planning (AIP)**
- 25. Oracle Retail Analytics**
- 26. Oracle Retail Advanced Science Engine (ORASE)**
- 27. Oracle Retail Integration Bus (RIB)**
- 28. Oracle Retail Service Backbone (RSB)**
- 29. Oracle Retail Financial Integration (ORFI)**
- 30. Oracle Retail Point-of-Service (ORPOS)**
 - Oracle Retail Mobile Point-of-Service (ORMPOS) (requires ORPOS)
- 31. Oracle Retail Markdown Optimization (MDO)**
- 32. Oracle Retail Clearance Optimization Engine (COE)**
- 33. Oracle Retail Analytic Parameter Calculator for Markdown Optimization (APC-MDO)**
- 34. Oracle Retail Analytic Parameter Calculator for Regular Price Optimization (APC-RPO)**
- 35. Oracle Retail Macro Space Planning (MSP)**

The Oracle Retail Enterprise suite includes Macro Space Planning. This can be installed independently of and does not affect the installation order of the other applications in the suite. If Macro Space Planning is installed, the installation order for its component parts is:

- Oracle Retail Macro Space Management (MSM)

- Oracle Retail In-Store Space Collaboration (ISSC) (requires MSM)
- Oracle Retail Mobile In-Store Space Collaboration (requires MSM and ISSC)

