



Release Notes

EDACONnect-Dashboard V3.5.0

Oracle Part Number: E73440-01



Copyright © Perception Software 2016

**Perception Software Company Confidential
Copyright © 2016 Perception Software
All Rights Reserved**

This document contains information that is confidential and proprietary to Perception Software, Inc. This information is supplied for identification, maintenance, evaluation, engineering, and inspection purposes only, and shall not be duplicated or disclosed without prior written permission from an authorized representative of Perception Software. This document and any other confidential information shall not be released to any third party without a valid non-disclosure agreement signed by the third party and an authorized Perception Software representative. In accepting this document, the recipient agrees to make every reasonable effort to prevent the unauthorized use of this information.

EDAConnect-Dashboard Version: 3.5.0
April, 2016

Introduction

This document describes enhancements and new features in the current release of EDAConnect Dashboard.

EDAConnect Dashboard 3.5.0 contains new features and enhancements including:

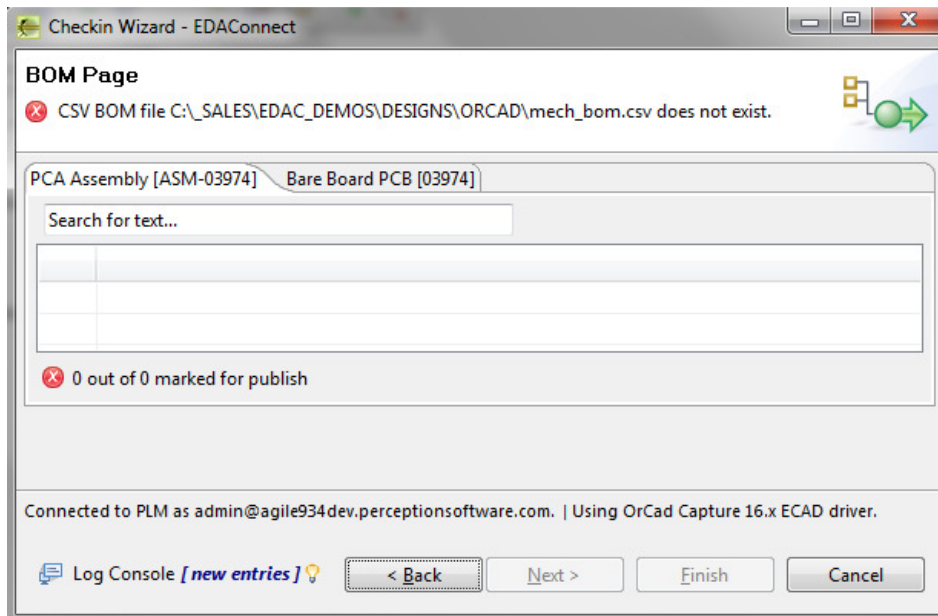
- Checkin Wizard
 - New messaging for CSV BOM sources
 - New checkbox for advancement of Change Order workflow
 - Full project path indication when using Workspace connector
- Template Editor
 - Required option CSV BOM Source
 - Workflow Advancement configuration option
- Connector Updates
 - Agile Versions now supported:
 - 9.3.5
 - Altium Connector
 - Improved Variant Support for Altium 14, 15
- Configuration Parameters
 - cookies
 - key properties
 - skip metadata

Checkin Design Wizard Updates

► CSV BOM Source - Required

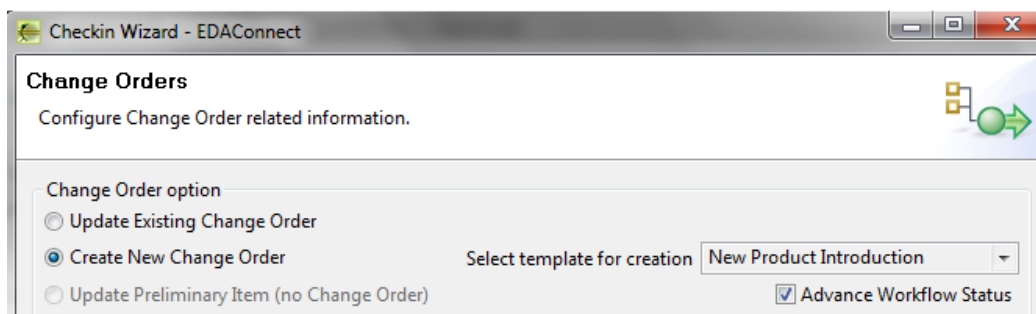
You now have the ability with the Template Editor to make a CSV BOM Source required, configuration is detailed later in this document.

If the CSV file reference in the template configuration is not found the following error message is displayed in the BOM Page preview of the wizard and the Next button is disabled.



► Workflow Advancement

You now have the ability with the Template Editor to enable the automatic advance of the workflow associated with the change order being created/updated, configuration is detailed later in this document.



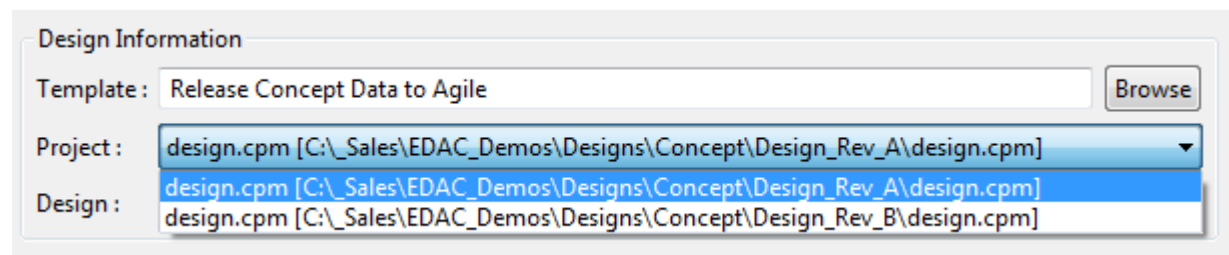
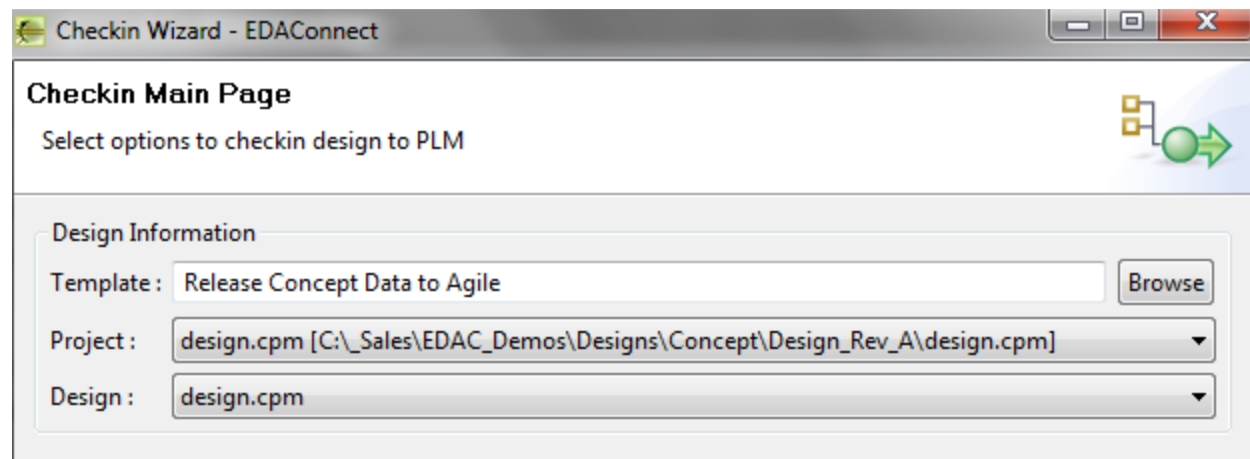
If enabled an **Advance Workflow Status** checkbox is added to the Change Orders page of the wizard. The box is checked by default which indicates that the workflow will be advanced to the second stage after a successful completion of all publish actions.

If unchecked the Change Order will be left in the current state for existing change orders or the initial state (e.g. Pending) for newly created change orders.

► Project Path

When using the Workspace connector (for ConceptHDL, Design Capture, Design Architect, Pads Logic) you may have the same project file name in multiple file systems.

Now the Project list box in the Main Page of the wizard provides the full path to the file so you can correctly identify and choose the correct workspace.

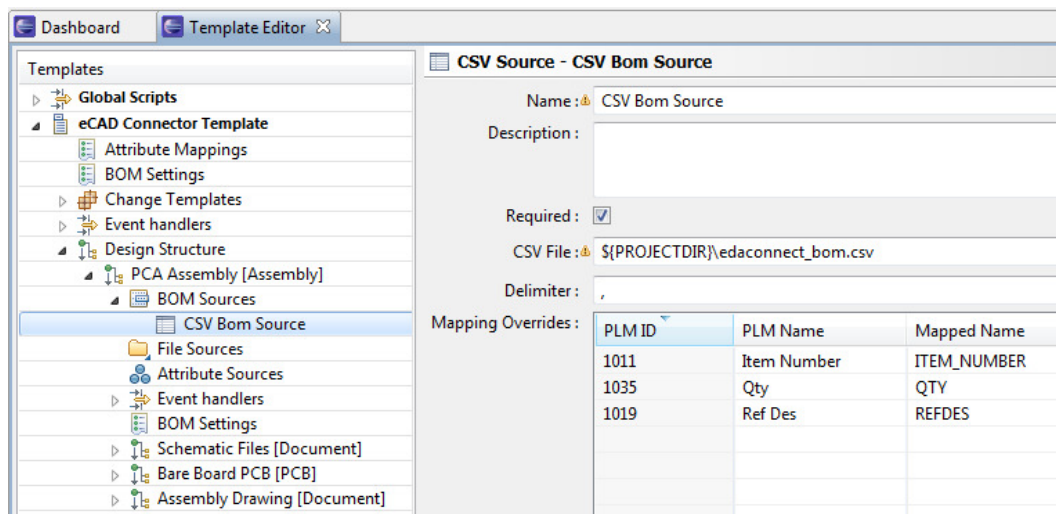


Template Editor Updates

► CSV BOM Source - Required

You now have the ability with the Template Editor to make a CSV BOM Source required. There is now a **Required** checkbox in the CSV BOM Source definition.

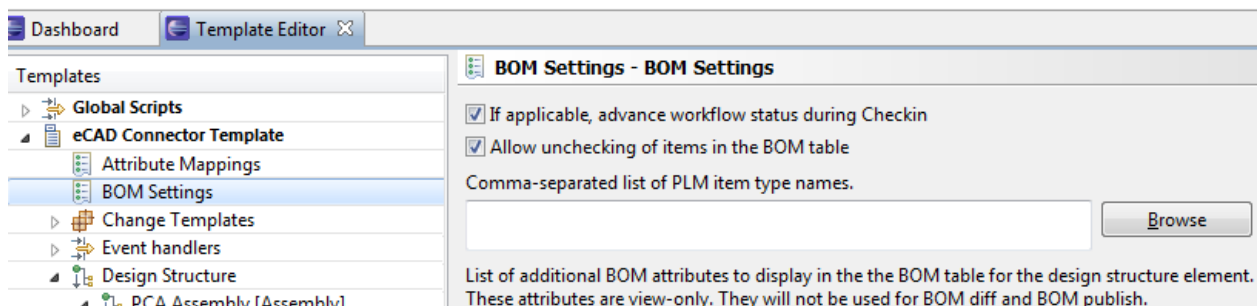
When checked it will require the specified CSV File to be present and will prevent wizard advancement if that file is not found.



► Workflow Advancement

You now have the ability with the Template Editor to enable the automatic advance of the workflow associated with the change order being created/updated. Within the BOM Settings section of the template this is now the checkbox option, **if applicable, advance the workflow status during Checkin**.

If checked the **Advance Workflow Status** checkbox is added to the Change Orders page of the wizard. If unchecked that UI element does not appear in the Change Order page.



Configuration Parameter Updates

Two new parameters were added to EDAConnect-Dashboard\configuration\config.ini to resolve some issues found in the field and to support new functionality.

► Key BOM fields

In some cases an ECAD Release to PLM solution may require that there are multiple BOM rows with the same Agile Item Number. This would be the case component to be depopulated (not stuffed) on the board appear in the BOM with a Qty of 0.

For proper redlining and BOM comparison it is import to understand what set of fields make up a unique row within the BOM table. The new edac.plm.agile.bom.key.cells parameters allow you to indicate these fields.

```
edac.plm.agile.bom.key.cells=Item Number,NOSTUFF
```

Please note in some Agile configurations Item Number is the attribute for the corporate part number and in some configurations it is Number. Please use the appropriate value.

► Webservice Session

The parameter allows EDAConnect to maintain the session state. This is important for a load balanced Agile configurations.

```
webservice.maintain.session=true
```