

**Oracle® Hospitality Cruise Shipboard Property  
Management System**

3M AT9000MKII Installation Guide

Release 7.30

**E97056-01**

August 2018

---

Copyright © 2015, 2018, Oracle and/or its affiliates. All rights reserved.

This software and related documentation are provided under a license agreement containing restrictions on use and disclosure and are protected by intellectual property laws. Except as expressly permitted in your license agreement or allowed by law, you may not use, copy, reproduce, translate, broadcast, modify, license, transmit, distribute, exhibit, perform, publish, or display any part, in any form, or by any means. Reverse engineering, disassembly, or decompilation of this software, unless required by law for interoperability, is prohibited.

The information contained herein is subject to change without notice and is not warranted to be error-free. If you find any errors, please report them to us in writing.

If this software or related documentation is delivered to the U.S. Government or anyone licensing it on behalf of the U.S. Government, then the following notice is applicable:

U.S. GOVERNMENT END USERS: Oracle programs, including any operating system, integrated software, any programs installed on the hardware, and/or documentation, delivered to U.S. Government end users are "commercial computer software" pursuant to the applicable Federal Acquisition Regulation and agency-specific supplemental regulations. As such, use, duplication, disclosure, modification, and adaptation of the programs, including any operating system, integrated software, any programs installed on the hardware, and/or documentation, shall be subject to license terms and license restrictions applicable to the programs. No other rights are granted to the U.S. Government.

This software or hardware is developed for general use in a variety of information management applications. It is not developed or intended for use in any inherently dangerous applications, including applications that may create a risk of personal injury. If you use this software or hardware in dangerous applications, then you shall be responsible to take all appropriate fail-safe, backup, redundancy, and other measures to ensure its safe use. Oracle Corporation and its affiliates disclaim any liability for any damages caused by use of this software or hardware in dangerous applications.

Oracle and Java are registered trademarks of Oracle and/or its affiliates. Other names may be trademarks of their respective owners.

Intel and Intel Xeon are trademarks or registered trademarks of Intel Corporation. All SPARC trademarks are used under license and are trademarks or registered trademarks of SPARC International, Inc. AMD, Opteron, the AMD logo, and the AMD Opteron logo are trademarks or registered trademarks of Advanced Micro Devices. UNIX is a registered trademark of The Open Group.

This software or hardware and documentation may provide access to or information on content, products, and services from third parties. Oracle Corporation and its affiliates are not responsible for and expressly disclaim all warranties of any kind with respect to third-party content, products, and services. Oracle Corporation and its affiliates will not be responsible for any loss, costs, or damages incurred due to your access to or use of third-party content, products, or services.

---

---

# Contents

<b>Figures .....</b>	<b>4</b>
<b>Preface .....</b>	<b>5</b>
Audience .....	5
Customer Support .....	5
Revision History .....	5
<b>1 Prerequisite, Supported Systems, and Compatibility .....</b>	<b>6</b>
Prerequisite .....	6
Supported Systems .....	6
Compatibility .....	6
<b>2 Driver Installation .....</b>	<b>7</b>
2.1. SPMS Upgrade .....	7
2.2. Driver Installation .....	7
Run 3M Page Reader SDK 3.3.1.11 DCA Asian.msi .....	7
Run 3M EASI 3.3.1.11.msi .....	11
3M OCR and design file .....	13
<b>3 Hardware Setup and usage in SPMS .....</b>	<b>15</b>
Hardware configuration in SPMS .....	15

---

---

# Figures

Figure 2-1 - 3M Page Reader SDK 3.3.1.11 Installation page.....	8
Figure 2-2 - 3M Page Reader SDK 3.3.1.11 Installation folder path .....	8
Figure 2-3 - License Agreement screen .....	9
Figure 2-4 - 3M ready to install page .....	9
Figure 2-5 - 3M Driver version page .....	10
Figure 2-6 - 3M Driver installation complete page.....	10
Figure 2-7 - 3M EASI installation page .....	11
Figure 2-8 - 3M EASI license agreement page .....	11
Figure 2-9 - 3M EASI configure shortcuts page.....	12
Figure 2-10 - 3M EASI install page .....	12
Figure 2-11 - 3M EASI installation complete page .....	13
Figure 2-12 - DCA folder location .....	14
Figure 3-1 - Hardware configuration in AQCI.....	15
Figure 3-2 - Prompt to scan MRZ second page in Express Reservation .....	17

---

---

# Preface



The 3M™ AT9000 Full Page Reader provides high resolution passport and document scanning in a compact form. The desktop unit features 24-bit colour imaging, 400 DPI high resolution scanning, OCR data capture and can read visible, IR, UV and 3M™ Confirm™ laminate.

Scanning is automatically triggered once a document is placed on the reader and thanks to Active Video technology the document can be accurately read at virtually any orientation and angle. The reader contains no moving parts, ensuring reliability and low maintenance. The device can also be specified to read the contactless chips in biometric travel documents (eIDs and ePassports).

## Audience

This document is intended for application specialist and users of Oracle Hospitality Cruise Shipboard Property Management System (SPMS).

## Customer Support

To contact Oracle Customer Support, access My Oracle Support at the following URL: <https://support.oracle.com>

When contacting Customer Support, please provide the following:

- Product version and program/module name
- Functional and technical description of the problem (include business impact)
- Detailed step-by-step instructions to re-create
- Exact error message received
- Screen shots of each step you take

## Revision History

Date	Description of Change
August, 2015	<ul style="list-style-type: none"><li>• Initial publication.</li></ul>
August 2018	<ul style="list-style-type: none"><li>• Update URL link.</li></ul>

---

---

# 1

## Prerequisite, Supported Systems, and Compatibility

This section describes the minimum requirement to operate 3M AT9000MKII Passport scanner with SPMS system.

### Prerequisite

- Setup file: DCA 3.3.1.11.zip
- SDK Setup file
  - SDK 3.3.1.11 DCA Asian.msi
  - 3M EASI 3.3.1.11.msi
- Remove all previously installed driver.

### Supported Systems

- Microsoft Windows 32-bit /x64-bit System

### Compatibility

- SPMS version 7.30.868 or later. For customer operating on version below 7.30.868, database upgrade to the recommended or latest version is essential.

---

---

## 2

## Driver Installation

This section describes the steps to upgrade SPMS version, SDK and driver installation for 3M AT9000MKII device.

### 2.1. SPMS Upgrade

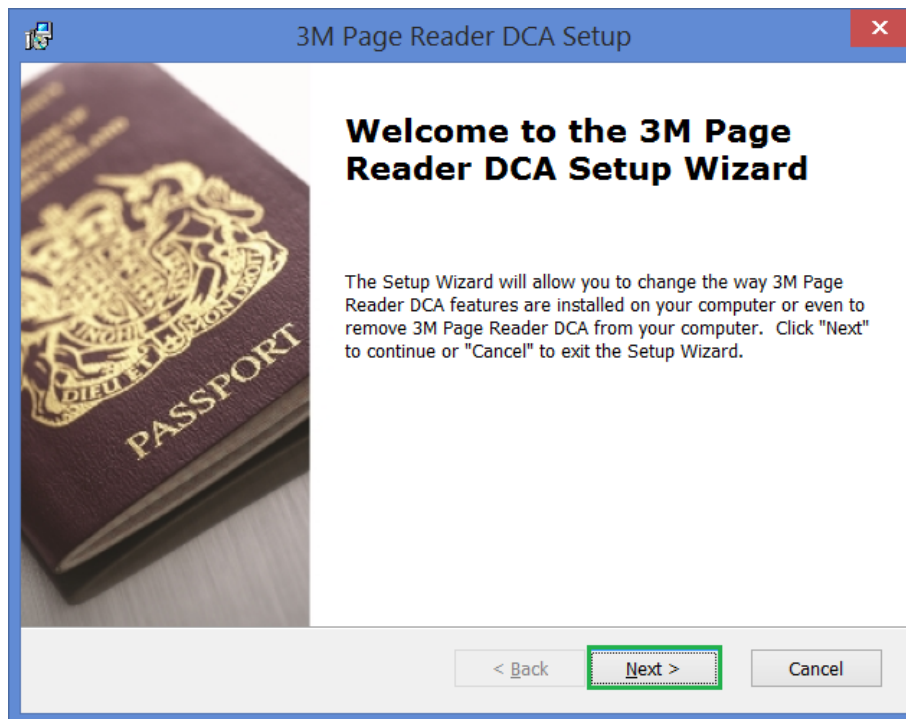
1. Download the latest program from My Oracle Support.
2. Run Database upgrade per normal with FC Database Installer.
3. Following DLLs will be *remove* from XAPP table:
  - SWIPEPROTOCOLSDLL.DLL
  - SETTINGSDLL.DLL
  - MMMREADERLOWLEVELAPI.DLL
  - MMMREADERDOTNET20.DLL
  - ERRORHANDLERDLL.DLL
  - DEVICEDLL.DLL
  - COMMDATADLL.DLL
4. Below DLLs will be *added* to XAPP table:
  - MMMReaderDotNet20DCA.dll
  - MMM.Util.Decoder.dll
  - NLog.dll
  - Wrapper.dll version 5.0.0.005

### 2.2. Driver Installation

1. Download the driver pack DCA 3.3.1.11.zip from 3M website.
2. Extract the 3M Page Reader SDK 3.3.1.11 DCA Asian.msi and 3M EASI 3.3.1.11.msi file to a Temp folder.

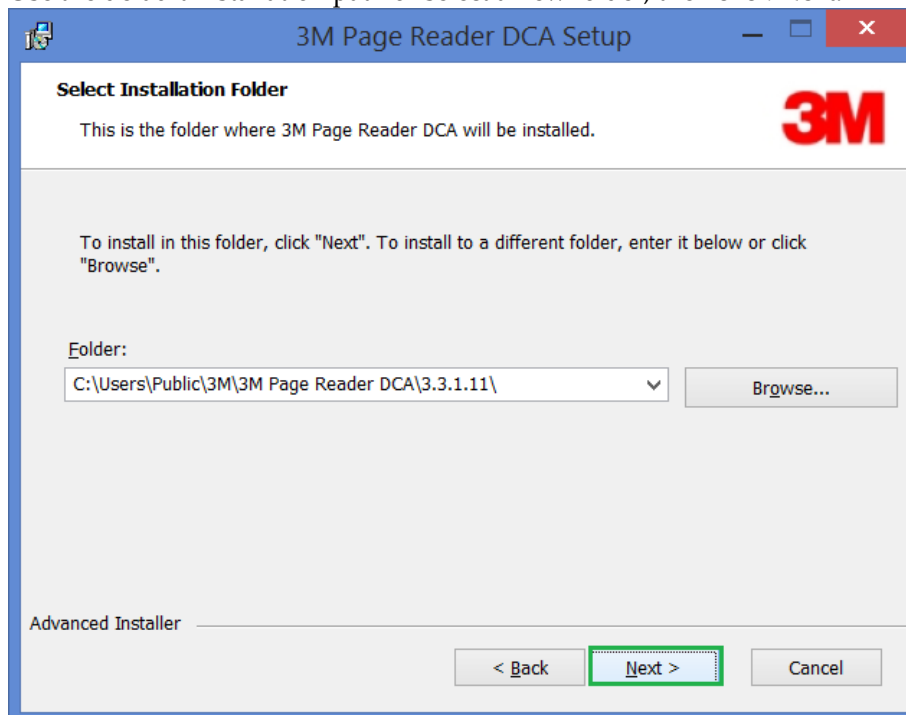
#### Run 3M Page Reader SDK 3.3.1.11 DCA Asian.msi

1. Double click 3M Page Reader SDK 3.3.1.11 DCA Asian.msi to launch the setup, then click **Next** to begin installation.



**Figure 2-1 - 3M Page Reader SDK 3.3.1.11 Installation page**

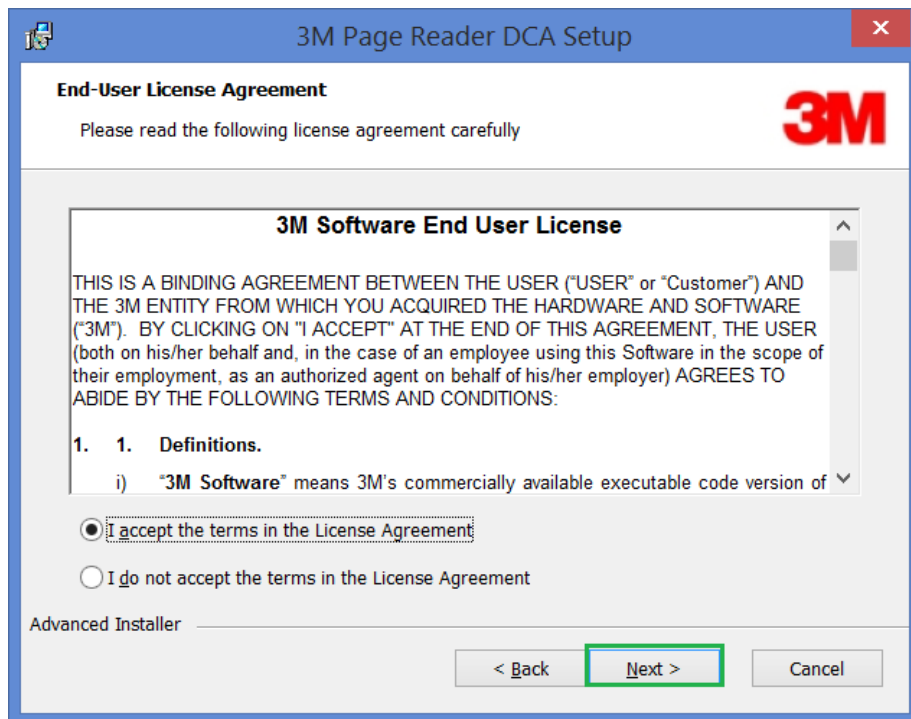
2. Use the default installation path or select a new folder, then click **Next**.



**Figure 2-2 - 3M Page Reader SDK 3.3.1.11 Installation folder path**

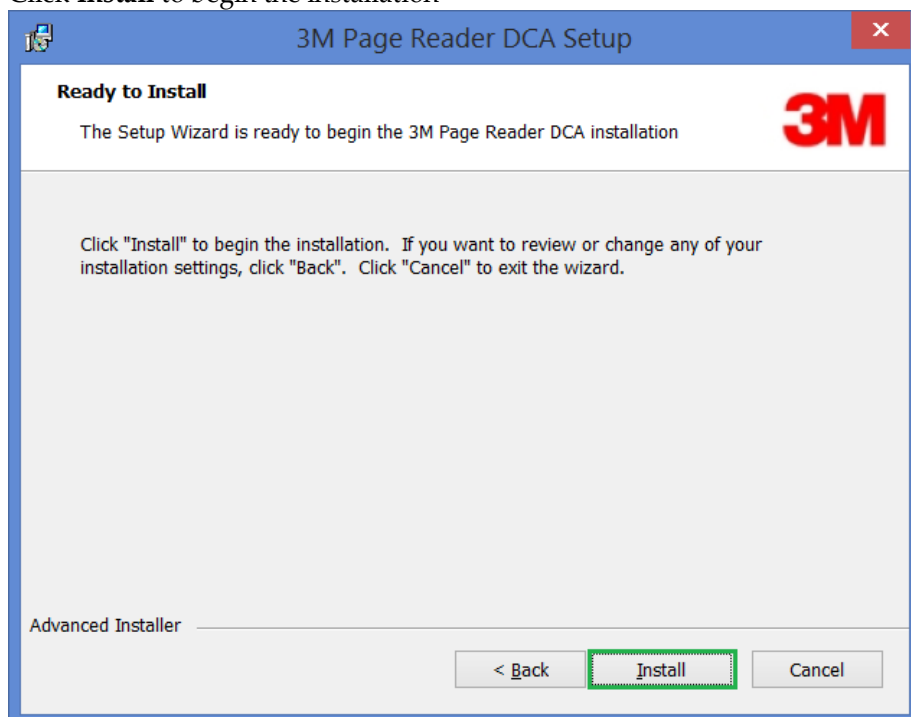
3. Select *"I accept the terms in the license agreement"*, then click **Next**.





**Figure 2-3 - License Agreement screen**

4. The configure shortcuts screen will show, click **Next** to continue
5. Click **Install** to begin the installation



**Figure 2-4 - 3M ready to install page**

6. Installation of 3M Page Reader is in progress. Click **Next** when the Version Info page displays.

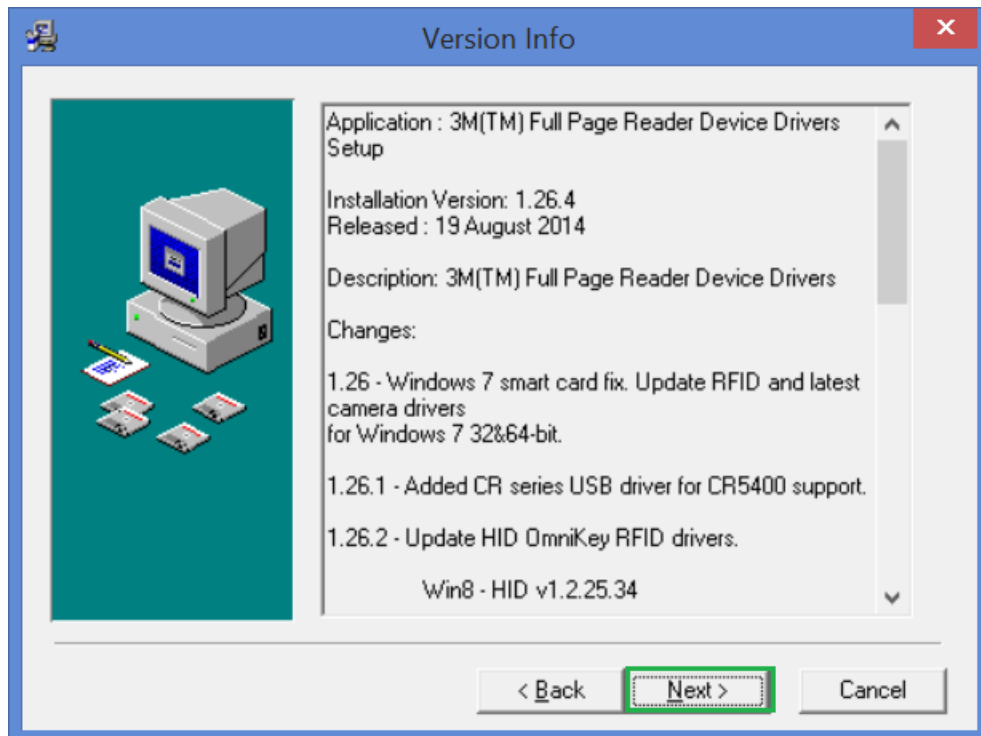


Figure 2-5 - 3M Driver version page

7. Click **Finish** to complete the installation and again to exit the setup.

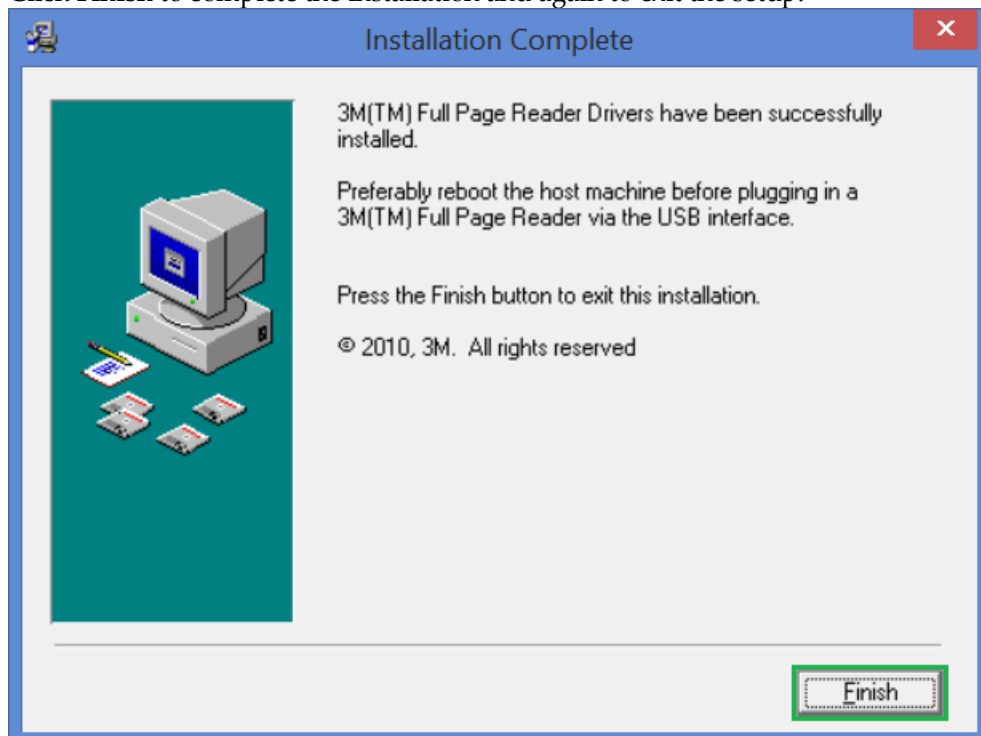


Figure 2-6 - 3M Driver installation complete page

## Run 3M EASI 3.3.1.11.msi

1. Double click 3M EASI 3.3.1.11.msi to launch the setup, then click **Next** to begin installation.



Figure 2-7 - 3M EASI installation page

2. Select *"I accept the terms in the license agreement"*, then click **Next**.



Figure 2-8 - 3M EASI license agreement page

3. At the Configure Shortcuts page, leave the checkbox as default, then click **Next** to continue.



**Figure 2-9 - 3M EASI configure shortcuts page**

4. Click **Install** to begin the installation.



**Figure 2-10 - 3M EASI install page**

5. Click **Finish** to complete the installation.

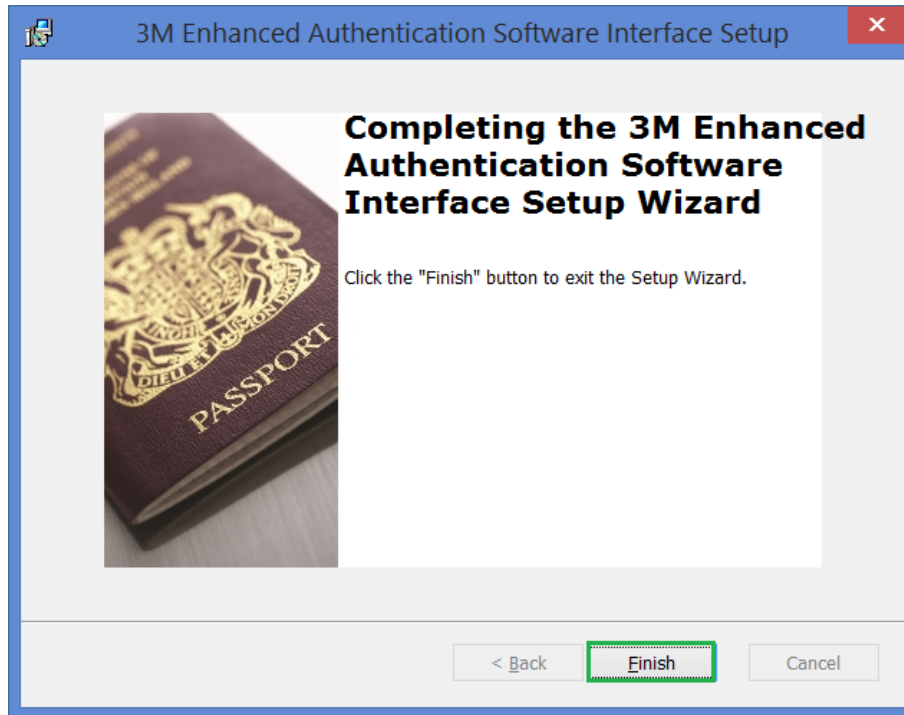
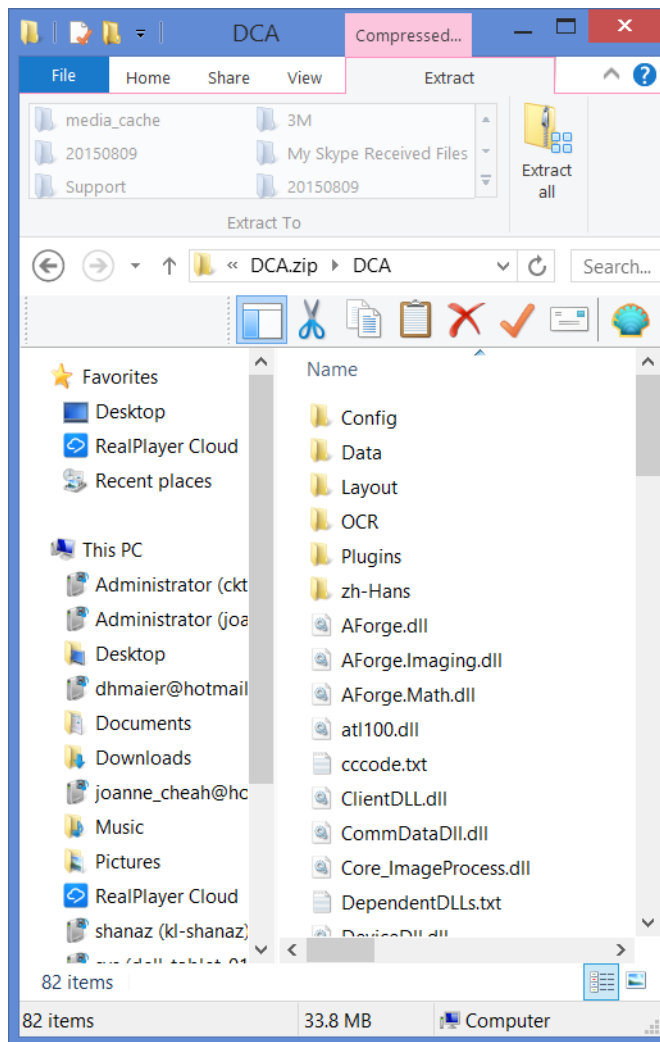


Figure 2-11 - 3M EASI installation complete page

### 3M OCR and design file

1. Extract the earlier downloaded DCA.zip to a Temp folder.
2. Ensure the extracted folder name is DCA.
3. Copy *all* sub-folders and programs of extracted DCA folder to C:\Program Files (x86)\Fidelio Cruise folder, where SPMS programs reside.



**Figure 2-12 - DCA folder location**

---

## 3 Hardware Setup and usage in SPMS

This section describes the setup require in SPMS and sample decoded passport information.

### Hardware configuration in SPMS

1. Connect 3M reader to the PC.
2. Launch **FC Advanced Quick Check in** program.
3. Navigate to **Setup, General Setup, Hardware** options.
4. Under *Passport Reader* section, select Passport Reader Type as **3M 9000MKII**, then click **Apply** to save the changes.

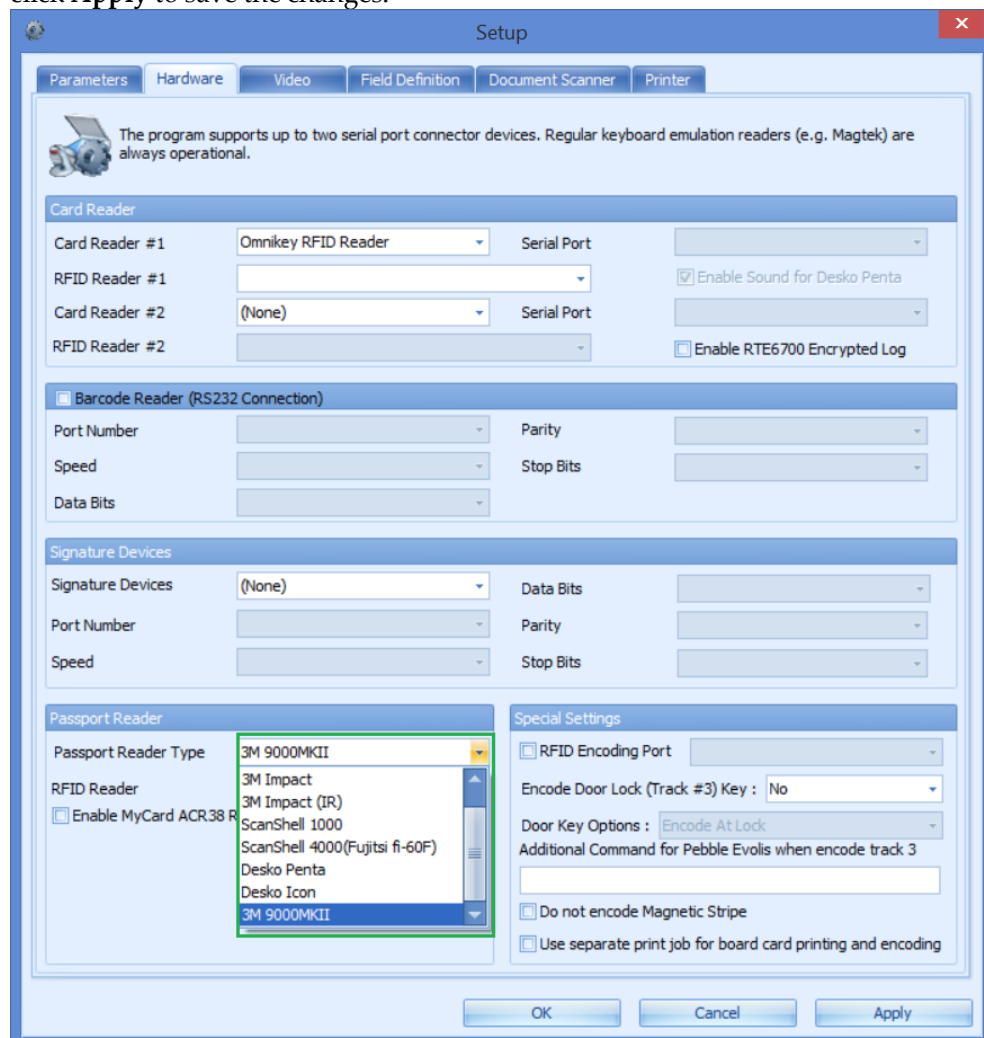


Figure 3-1 - Hardware configuration in AQCI

5. Navigate to **Home** tab, then click **New** button on the ribbon bar.
6. Scan the passport when prompt and following information will populate on screen.
  - Photo
  - Forename

- 
- Surname
  - Other First Name in Chinese character
  - Birth Nation
  - Birth Date
  - Nationality
  - Passport number
  - Place of Issue
  - Country of Issue
  - Expiry Date

---

**Note:** 3M provides Chinese Name as Full name and these information populates into *Other First Name* field.

---

7. Below are the fields where decoded passport information will show in AQCI Wizard screen.

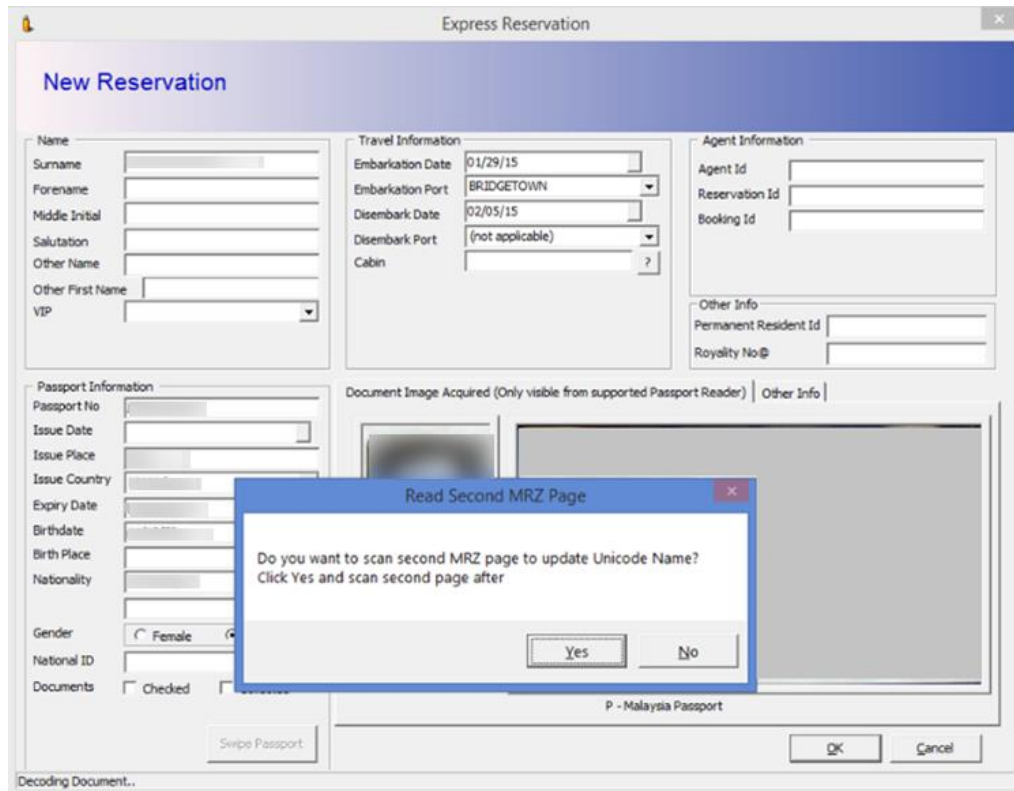
- First name
- Last name
- Chinese name
- Nationality
- Document Type
- Document number
- Date of Birth
- Expiry Date
- Country of Birth
- Country of Residence

---

**Note:** 3M decodes Chinese name from MRZ and returns the decoded Last Chinese Name only.

---





**Figure 3-2 - Prompt to scan MRZ second page in Express Reservation**

**Note:** If the device detects passport that has more page to be scan, it sends an indicator with a pop up message prompting for second MRZ page to be scan in AQCI or Management module.