

**Oracle® Hospitality Cruise Shipboard
Property Management System**
Advance Board Card Printing User Guide
Release 7.30.870

February 2016

Copyright © 1995, 2016, Oracle and/or its affiliates. All rights reserved.

This software and related documentation are provided under a license agreement containing restrictions on use and disclosure and are protected by intellectual property laws. Except as expressly permitted in your license agreement or allowed by law, you may not use, copy, reproduce, translate, broadcast, modify, license, transmit, distribute, exhibit, perform, publish, or display any part, in any form, or by any means. Reverse engineering, disassembly, or decompilation of this software, unless required by law for interoperability, is prohibited.

The information contained herein is subject to change without notice and is not warranted to be error-free. If you find any errors, please report them to us in writing.

If this software or related documentation is delivered to the U.S. Government or anyone licensing it on behalf of the U.S. Government, then the following notice is applicable:

U.S. GOVERNMENT END USERS: Oracle programs, including any operating system, integrated software, any programs installed on the hardware, and/or documentation, delivered to U.S. Government end users are commercial computer software pursuant to the applicable Federal Acquisition Regulation and agency-specific supplemental regulations. As such, use, duplication, disclosure, modification, and adaptation of the programs, including any operating system, integrated software, any programs installed on the hardware, and/or documentation, shall be subject to license terms and license restrictions applicable to the programs. No other rights are granted to the U.S. Government.

This software or hardware is developed for general use in a variety of information management applications. It is not developed or intended for use in any inherently dangerous applications, including applications that may create a risk of personal injury. If you use this software or hardware in dangerous applications, then you shall be responsible to take all appropriate fail-safe, backup, redundancy, and other measures to ensure its safe use. Oracle Corporation and its affiliates disclaim any liability for any damages caused by use of this software or hardware in dangerous applications.

Oracle and Java are registered trademarks of Oracle and/or its affiliates. Other names may be trademarks of their respective owners.

Intel and Intel Xeon are trademarks or registered trademarks of Intel Corporation. All SPARC trademarks are used under license and are trademarks or registered trademarks of SPARC International, Inc. AMD, Opteron, the AMD logo, and the AMD Opteron logo are trademarks or registered trademarks of Advanced Micro Devices. UNIX is a registered trademark of The Open Group.

This software or hardware and documentation may provide access to or information on content, products, and services from third parties. Oracle Corporation and its affiliates are not responsible for and expressly disclaim all warranties of any kind with respect to third-party content, products, and services. Oracle Corporation and its affiliates will not be responsible for any loss, costs, or damages incurred due to your access to or use of third-party content, products, or services.

Contents

Contents	3
Tables	4
Figures	5
Preface	6
Audience	6
Customer Support	6
Revision History	6
1. Prerequisites, Supported Systems, and Compatibility	7
Prerequisites	7
Supported Systems.....	7
Compatibility	7
2. Setting Up Advance Board Card Printing	8
2.1. Accessing the Setup Page.....	8
2.2. Creating a Template.....	10
2.3. Removing a Template.....	11
3. Printing the Board Card	12

Tables

Table 2-1 - Field definition of General tab	8
Table 2-2 - Field definition of User Define tab	10
Table 2-3 - Field definitions of Sorting tab.....	10

Figures

Figure 2-1 – Board Card Batch Printing Template Setup 8
Figure 2-2 - Board Card Batch Printing Template Setup User Define Filter..... 9
Figure 2-3 - Board Card Batch Printing Template Setup Sorting tab..... 10
Figure 3-1 - Advance Board Card Printing screen..... 12
Figure 3-2 - Total records to print 13
Figure 3-3 - Batch Board Card Printing 13

Preface

This document describes the setup and usage of Advance Board Card Printing User Guide.

The Advance Board Card Printing User Guide is a function within the Administration module that enable user to customize the type board cards to be printed by batch, based on the criteria set in a template.

Audience

This document is intended for application specialist and end-users of Oracle Hospitality Cruise Shipboard Property Management System.

Customer Support

To contact Oracle Customer Support, access My Oracle Support at the following URL: <https://support.oracle.com/>

When contacting Customer Support, please provide the following:

- Product version and program/module name
- Functional and technical description of the problem (include business impact)
- Detailed step-by-step instructions to re-create
- Exact error message received
- Screen shots of each step you take

Revision History

Date	Description of Change
February 25, 2016	<ul style="list-style-type: none">• Initial publication.

1. Prerequisites, Supported Systems, and Compatibility

This section describes the minimum requirements to use the Advance Board Card Printing in Oracle Hospitality Cruise Shipboard Property Management System.

Prerequisites

- Administration.exe
- Management.exe

Supported Systems

- Windows 32-bit System
- Windows 64-bit System

Compatibility

Oracle® Hospitality Cruise Shipboard Property Management System version 7.30.870 or later. For customers operating on version below 7.30.870, database upgrade to the recommended or latest version is required.

2. Setting Up Advance Board Card Printing

2.1. Accessing the Setup Page

The setup function is accessible by launching the **Administration** module, then select **Administration, Board Card Printing Template** from the menu bar.

Figure 2-1 – Board Card Batch Printing Template Setup

Table 2-1 - Field definition of General tab

Field Name	Definitions
Description	Template Name
Card Type	Type of card to print, e.g. Guest, Crew, Group, Visitor, Gift Card or Prompt to define the criteria in Advance BCard Printing screen.
Make a copy of existing card	Prints board card with the same account ID or new account ID.
Custom Report Template	Prints board card using customize report template instead of System Default report. Report template must be available when setting up the Board Card Template setup.
Shore Res ID	Prints board card by Shore Reservation ID.
Age	Prints board card by age range.

Field Name	Definitions
Cabin	Prints board card by cabin range.
Manifest	Prints board card by manifest number range.
Reservation Status	Prints board card by reservation status: <ul style="list-style-type: none"> • Checked-In • Prompt Reservation Date – User define in Advance BCard printing screen at time of printing. • Predefine Reservation Date – Prints according to date defined in template.
Group Name	Prints board card by Group Name and applicable to Card Type = Group
Name	Print board card by name range.
Nationality	Prints board card for: <ul style="list-style-type: none"> • All Nationalities • US Citizens only • Non-US Citizens
Product / Pre-Product / Award Level	Prints board card by Product: <ul style="list-style-type: none"> • All (Field value is both null and not null) • Only when specified (Field value is not null) • Only when not specified (Field value is null)

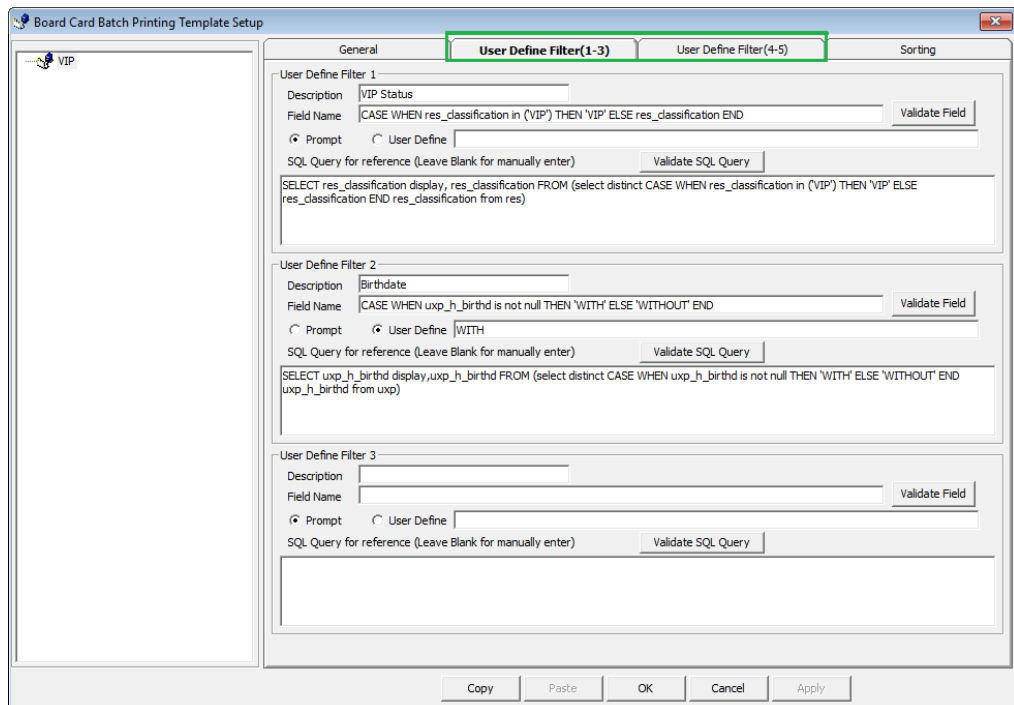


Figure 2-2 - Board Card Batch Printing Template Setup User Define Filter

Table 2-2 - Field definition of User Define tab

Field Name	Definitions
Description	Name of the Filter
Field Name	Field name to filter. Reference to field name of System Data table.
SQL Query for reference	Additional Filter using SQL Command

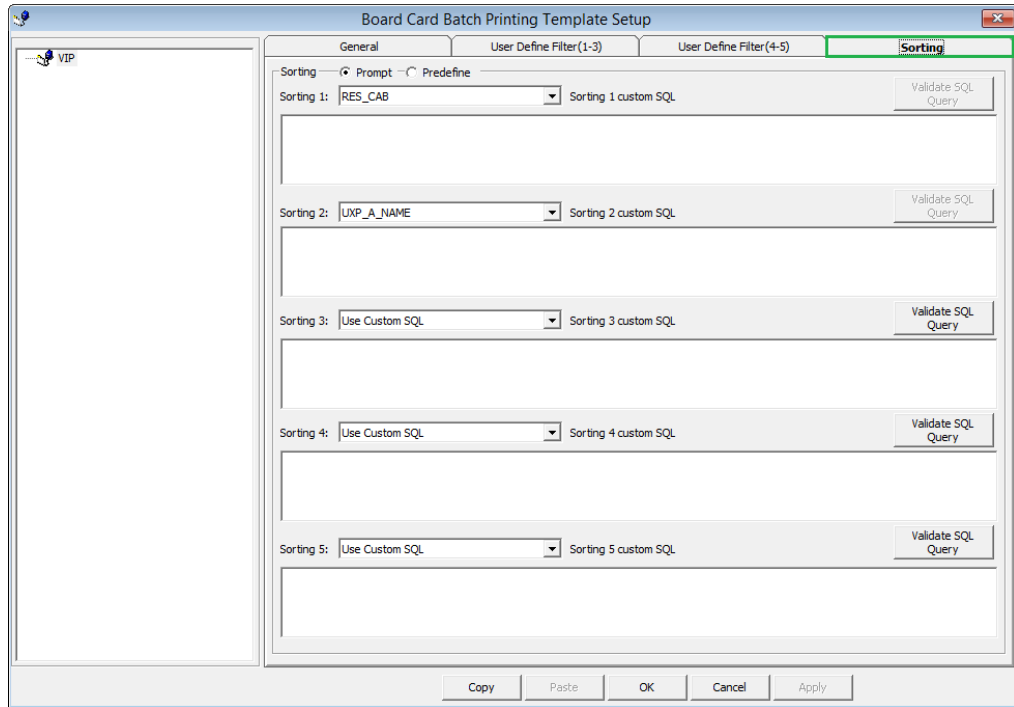


Figure 2-3 - Board Card Batch Printing Template Setup Sorting tab

Table 2-3 - Field definitions of Sorting tab

Field Name	Definitions
Sorting Prompt/Predefine	Available type of sorting <ul style="list-style-type: none"> • Prompt User when printing board card • Predefine by field or custom SQL

2.2. Creating a Template

1. From the **Board Card Batch Printing Template Setup** screen, right click on the left pane and select **Add Template**.
2. Enter the **Template description** and select the **Card Type** from the drop-down list.
3. Check the respective section whether to prompt when generating the card, or use the predefined selection. If Predefined is checked, enter the value in the field next to the check box.

-
4. Click **Apply** to save the selection, and then navigate to **User Define Filter** tab.
 5. In the User Define Filter tab, **Description field**, enter the filter name.
 6. Enter the field name or check the **User Define** and enter the value, then click the **Validate Field**.
 7. Use the **SQL Query** to further filter the fields by inserting the SQL command, then click the **Validate SQL Query**.
 8. Click **Apply** to save the selection, and then navigate to the Sorting tab.
 9. Select the sorting type and then click **Apply** to save.
 10. Click **OK** to save the template.

2.3. Removing a Template

From the **Board Card Batch Printing Template Setup** screen, select the template name on the left pane, and then right click and select **Remove Template**.

3. Printing the Board Card

This section describes the steps to print the board card using a template.

The screenshot shows the 'Advanced Board Card Printing' dialog box. The 'Select BCard Template' dropdown is set to 'VIP'. The 'Card Type' section has 'Guest' selected. The 'Made a copy of the existing card' section has 'Yes' selected. The 'Age' section has 'From' set to 18 and 'To' set to 299. The 'Reservation Status' section has 'Reservation' selected with a date of 08/01/2016. The 'User Define Filter' section has 'VIP Status' set to 'VIP' and 'Birthdate' set to 'WITH'. The 'Sorting' section has seven dropdown menus: Sorting 1 (None), Sorting 2 (Cabin), Sorting 3 (RES_CAB), Sorting 4 (UXP_A_NAME), Sorting 5 (None), Sorting 6 (None), and Sorting 7 (None). The 'Print' button is visible at the bottom right.

Figure 3-1 - Advance Board Card Printing screen

1. Launch the **Management** module, and select **Advanced BoardCard Printing** from the **Front Desk** drop down menu.
2. Select the **BCard Template** from the drop-down list to populate the predefined fields.

Note: Selected field(s) can be change manually using the drop-down list.

- Click **Print** to print the board cards.

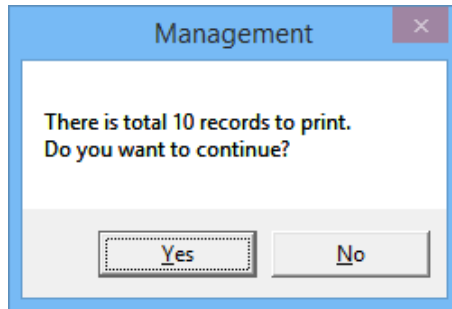


Figure 3-2 - Total records to print

- Select **Yes** to confirm the total records to print when prompt.
- In the Batch Board Card Printing window, status of the board card will be shown.

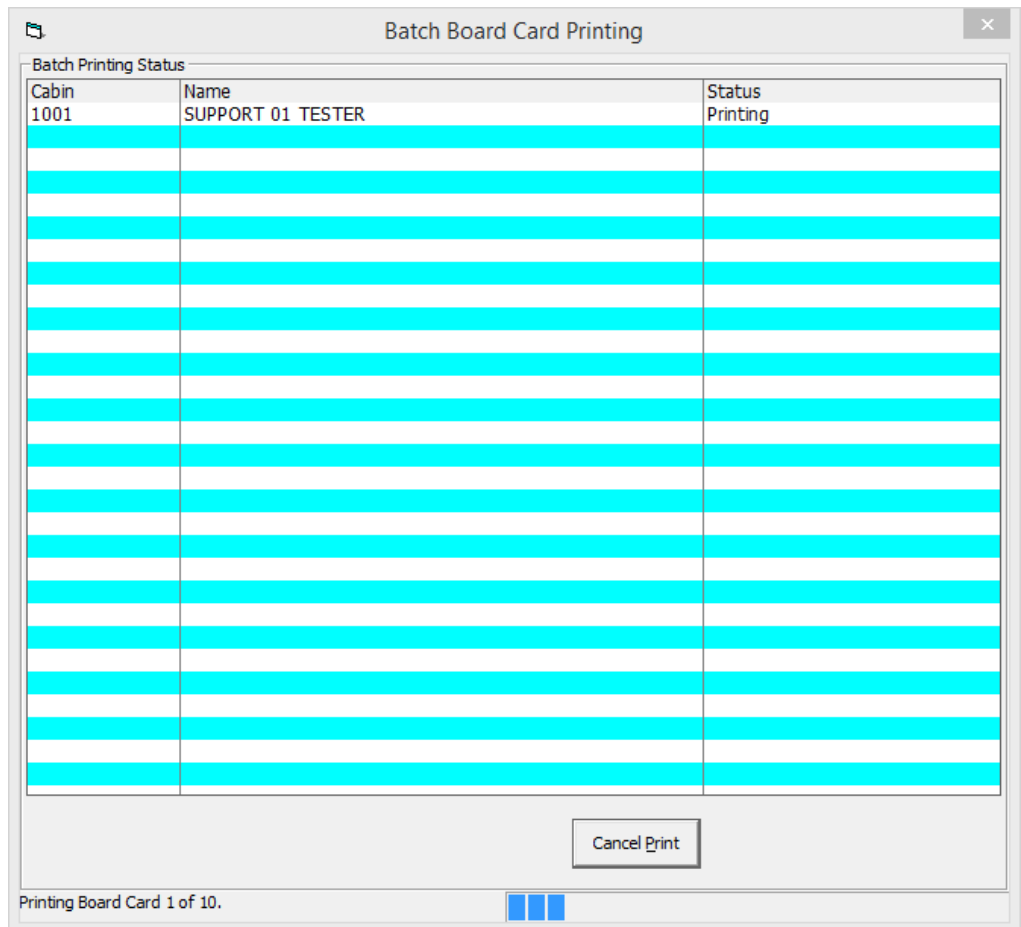


Figure 3-3 - Batch Board Card Printing