

**Oracle® Hospitality Cruise Shipboard  
Property Management System**  
Zebra ZXP Series 3 Installation Guide  
Release 7.30.851

January 2016

---

Copyright © 2015, 2015 Oracle and/or its affiliates. All rights reserved.

This software and related documentation are provided under a license agreement containing restrictions on use and disclosure and are protected by intellectual property laws. Except as expressly permitted in your license agreement or allowed by law, you may not use, copy, reproduce, translate, broadcast, modify, license, transmit, distribute, exhibit, perform, publish, or display any part, in any form, or by any means. Reverse engineering, disassembly, or decompilation of this software, unless required by law for interoperability, is prohibited.

The information contained herein is subject to change without notice and is not warranted to be error-free. If you find any errors, please report them to us in writing.

If this software or related documentation is delivered to the U.S. Government or anyone licensing it on behalf of the U.S. Government, then the following notice is applicable:

U.S. GOVERNMENT END USERS: Oracle programs, including any operating system, integrated software, any programs installed on the hardware, and/or documentation, delivered to U.S. Government end users are "commercial computer software" pursuant to the applicable Federal Acquisition Regulation and agency-specific supplemental regulations. As such, use, duplication, disclosure, modification, and adaptation of the programs, including any operating system, integrated software, any programs installed on the hardware, and/or documentation, shall be subject to license terms and license restrictions applicable to the programs. No other rights are granted to the U.S. Government.

This software or hardware is developed for general use in a variety of information management applications. It is not developed or intended for use in any inherently dangerous applications, including applications that may create a risk of personal injury. If you use this software or hardware in dangerous applications, then you shall be responsible to take all appropriate fail-safe, backup, redundancy, and other measures to ensure its safe use. Oracle Corporation and its affiliates disclaim any liability for any damages caused by use of this software or hardware in dangerous applications.

Oracle and Java are registered trademarks of Oracle and/or its affiliates. Other names may be trademarks of their respective owners.

Intel and Intel Xeon are trademarks or registered trademarks of Intel Corporation. All SPARC trademarks are used under license and are trademarks or registered trademarks of SPARC International, Inc. AMD, Opteron, the AMD logo, and the AMD Opteron logo are trademarks or registered trademarks of Advanced Micro Devices. UNIX is a registered trademark of The Open Group.

This software or hardware and documentation may provide access to or information on content, products, and services from third parties. Oracle Corporation and its affiliates are not responsible for and expressly disclaim all warranties of any kind with respect to third-party content, products, and services. Oracle Corporation and its affiliates will not be responsible for any loss, costs, or damages incurred due to your access to or use of third-party content, products, or services.

---

---

# Contents

<b>Figures .....</b>	<b>4</b>
<b>Preface.....</b>	<b>5</b>
Audience.....	5
Customer Support.....	5
Revision History .....	5
<b>1 Introduction.....</b>	<b>6</b>
1.1 Prerequisites .....	6
1.2 Supported Systems .....	6
1.3 Certifications.....	6
1.4 Compatibility.....	6
<b>2 Installing a Driver .....</b>	<b>7</b>
2.1 USB Printer Driver Installation.....	7
<b>3 Firmware.....</b>	<b>10</b>
3.1 Printer Settings .....	10
3.2 Updating the Firmware.....	11
<b>4 Monitoring Tools .....</b>	<b>15</b>
4.1 Removing a DLL .....	15
<b>5 Management Setup .....</b>	<b>16</b>
5.1 Configuring the Hardware.....	16
5.2 Setting up the Printer to Print Immediately.....	16

---

---

# Figures

Figure 1-1 - Zebra ZXP Series 3 Card Printer ..... 6

Figure 2-1 - USB Driver Installation Welcome Screen..... 7

Figure 2-2 - USB Driver Installation..... 7

Figure 2-3 - USB Driver Installation Prompt ..... 8

Figure 2-4 - USB Driver Installation License Agreement..... 8

Figure 2-5 - USB Driver Installation Destination folder..... 9

Figure 3-1 - Firmware Update ..... 10

Figure 3-2 - Card Coercivity..... 10

Figure 3-3 - Printer Setting Advanced tab..... 11

Figure 3-4 - Firmware update ..... 12

Figure 3-5 - Firmware download path ..... 12

Figure 3-6 - Firmware download ..... 13

Figure 3-7 - Firmware initialization ..... 14

Figure 5-1 - Management module Hardware Options ..... 16

Figure 5-2 - Management module Hardware General Setting..... 17

---

---

# Preface

## Audience

This document is intended for application specialist and user of Oracle® Hospitality Cruise Shipboard Property Management System.

## Customer Support

To contact Oracle Customer Support, access My Oracle Support at the following URL: <https://support.oracle.com/>

When contacting Customer Support, please provide the following:

- Product version and program/module name
- Functional and technical description of the problem (include business impact)
- Detailed step-by-step instructions to re-create
- Exact error message received
- Screen shots of each step you take

## Revision History

Date	Description of Change
July 1, 2015	<ul style="list-style-type: none"><li>• Initial publication.</li></ul>
September 21, 2015	<ul style="list-style-type: none"><li>• Updated Firmware/Driver setup file.</li></ul>
January 26, 2016	<ul style="list-style-type: none"><li>• Updated firmware/driver file location</li></ul>

---

---

# 1 Introduction

Reliable and easy to use, the ZXP Series 3 is everything you could want in a professional card printer. The ZXP Series 3 is an ideal solution for low- to medium-volume single or dual-sided printing applications that require minimal operator training and excellent print quality. ZXP Series 3 printers offer advanced features and high capacity media options.

Zebra® ZXP Series 3™  
Card Printer



Figure 1-1 - Zebra ZXP Series 3 Card Printer

## 1.1 Prerequisites

Installing a device with a correct version of firmware and driver is essential. Please contact Oracle Hospitality Cruise Customer Support for latest driver and firmware.

- Set up file: zxp3-dz31cg-05-01-00-00.exe.
- Set up for Beta version: zxp3-dz31cg-.05-47-00-00.exe
- Certified driver version: Dz31cg-05-01-00-00.

## 1.2 Supported Systems

- Windows 32-bit System
- Windows 64-bit System

## 1.3 Certifications

- Certified driver version: DZ31CG.05.47.00.00
- Certified firmware version: fz3mg-02-03-00

## 1.4 Compatibility

Oracle® Hospitality Cruise Shipboard Property Management System (SPMS) version 7.30.851 or later. For customer operating on version below 7.30.851, database upgrade to the recommended or latest version is required.

---

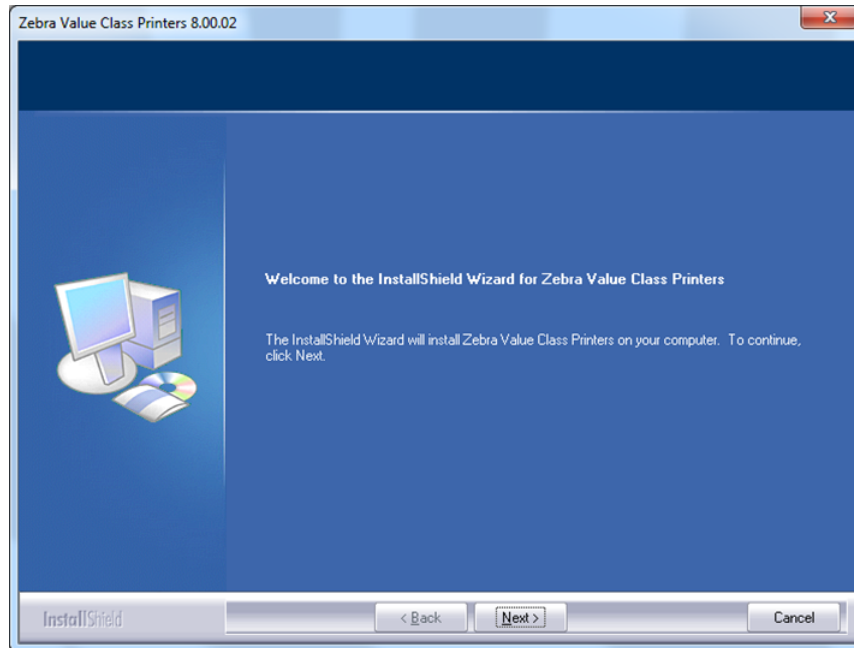
---

## 2 Installing a Driver

Installing the correct driver is essential for the printer to work as it should be.

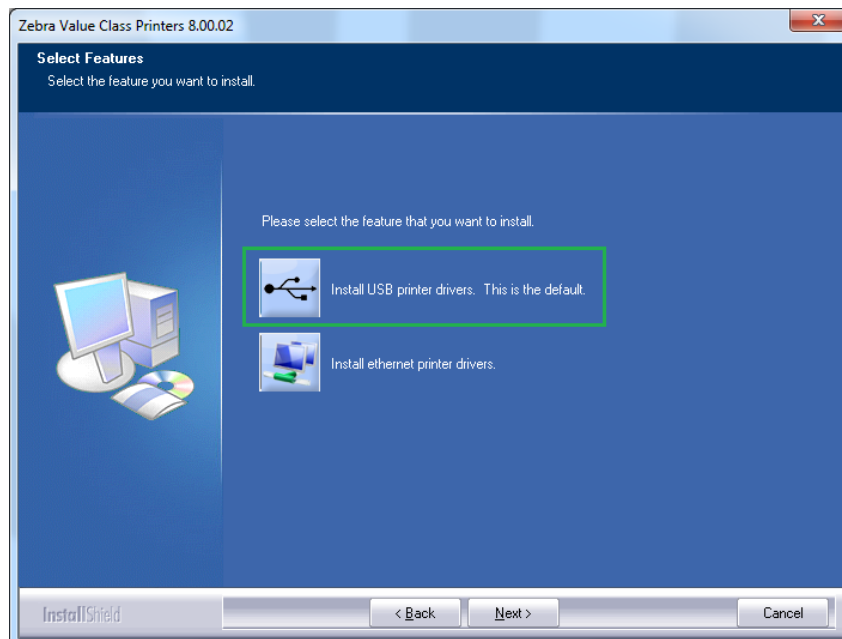
### 2.1 USB Printer Driver Installation

1. Right-click and choose **Run as Administrator** on the **zxp3-dz31cg-05-01-00-00.exe**.
2. On the Welcome to InstallShield Wizard, click **Next** to continue.



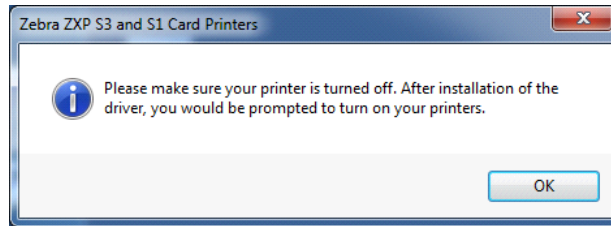
**Figure 2-1 - USB Driver Installation Welcome Screen**

3. Select **Install USB printer drivers**. This is the default, then click **Next**.



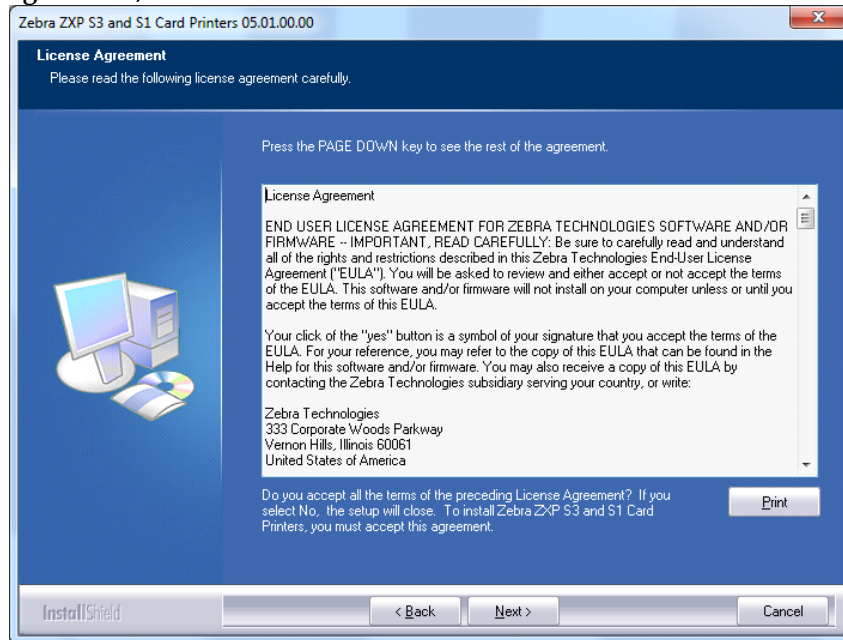
**Figure 2-2 - USB Driver Installation**

4. Ensure the printer is *turned off*, and then click **OK**.



**Figure 2-3 - USB Driver Installation Prompt**

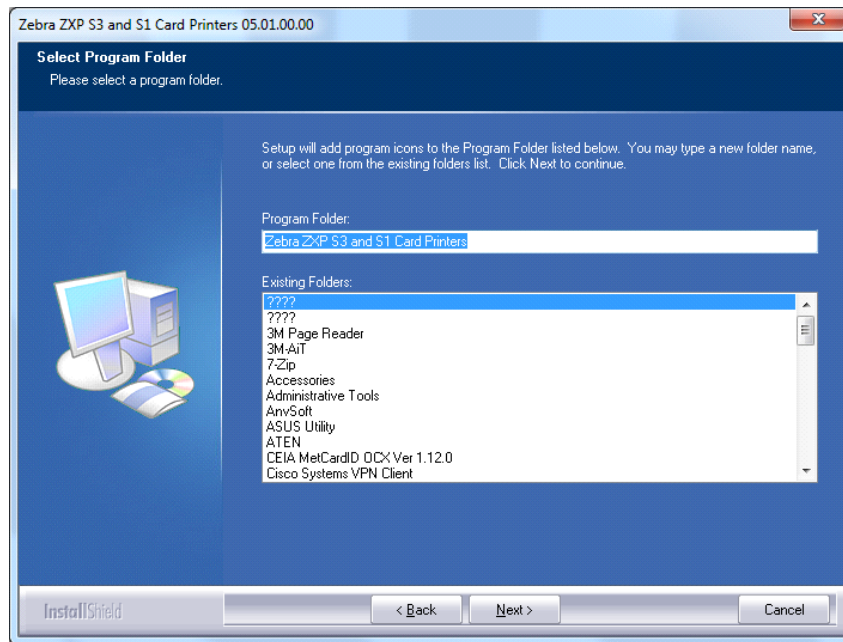
5. On the License Agreement window, select **Accept the terms of the license agreement**, and then click **Next**.



**Figure 2-4 - USB Driver Installation License Agreement**

6. Select **Complete** to install all program features, and then click **Next**.
7. On the Choose Destination Location window, click **Next** to accept the default setup location.





**Figure 2-5 - USB Driver Installation Destination folder**

8. Click **Finish** to complete the installation, and restart the PC.
9. After the system boot up, connect the USB cable to your PC.
10. Your PC will detect the USB connector and install the device driver automatically.
11. A printer icon will appear in the taskbar when installation is successful.
12. In the **Control Panel, Devices and Printers**, the **Zebra ZXP Series 3 USB** printer is now installed and ready to print.

---

---

## 3 Firmware

The firmware version will determine the operability of the device, and below steps will guide you into applying the correct firmware version. See *Introduction* page for certified firmware version.

---

---

**Warning: The firmware update function is disabled once the DLLs are removed.**

---

---

### 3.1 Printer Settings

1. In Printer and Devices screen, right-click on the printer icon and select **Printer Properties**.

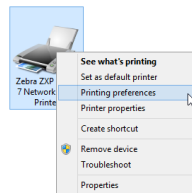


Figure 3-1 - Firmware Update

2. On General tab of the printer properties page, click on **Preferences**.
3. In the **Encoding** tab, set the **Coercivity** to *High Col*, and then click **OK** to save.

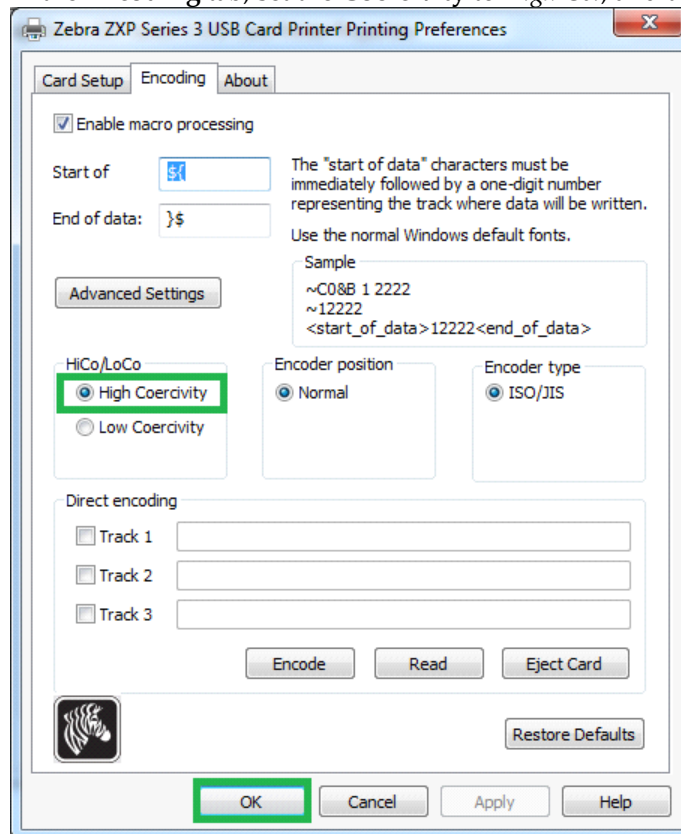


Figure 3-2 - Card Coercivity

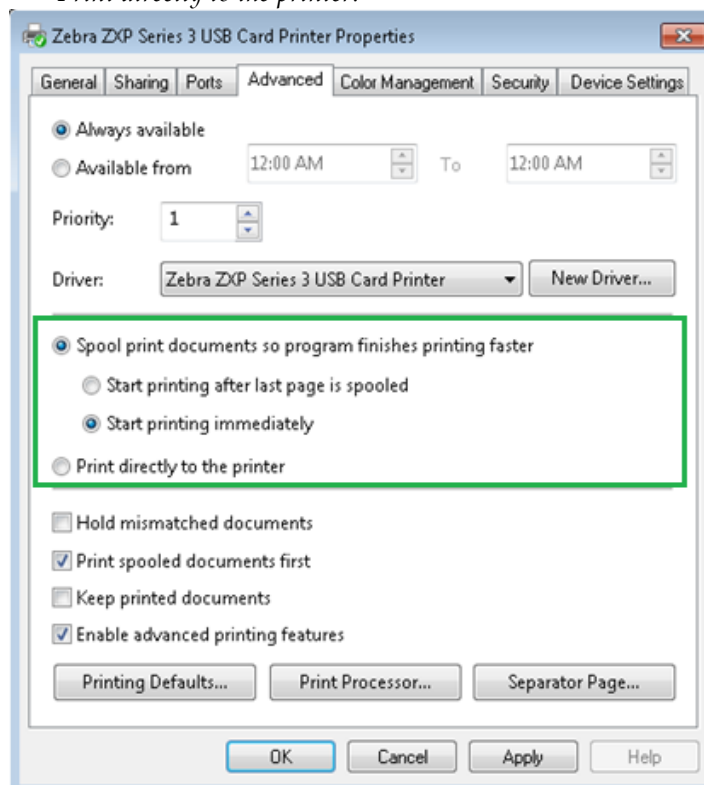
4. Go to **Advanced, Spool print document** section, and select one of these option.
  - *Start Printing Immediately.*

---

**Note:** This setting require additional configuration in Management module, Options, Hardware. See *Setting up the Printer to Print Immediately.*

---

- *Print directly to the printer.*



**Figure 3-3 – Printer Setting Advanced tab.**

5. Click **Apply** to save, and then **OK** to exit.

## 3.2 Updating the Firmware

1. At the bottom of **Printer Properties, Device Settings** tab, click on **Tools**.

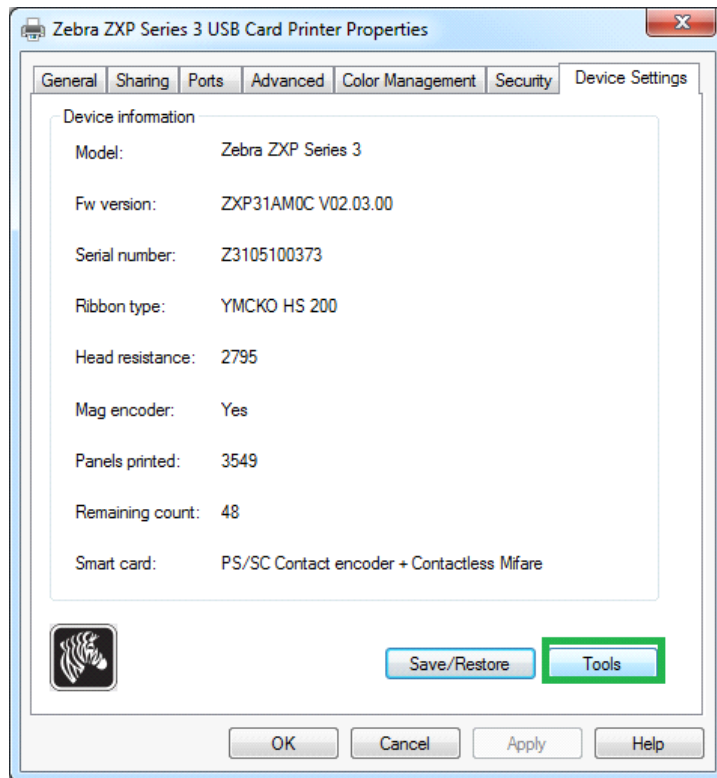


Figure 3-4 - Firmware update

2. Under **Firmware download** section, click **Select File** and locate the firmware file `fz3mg-02-03-00.bin`.

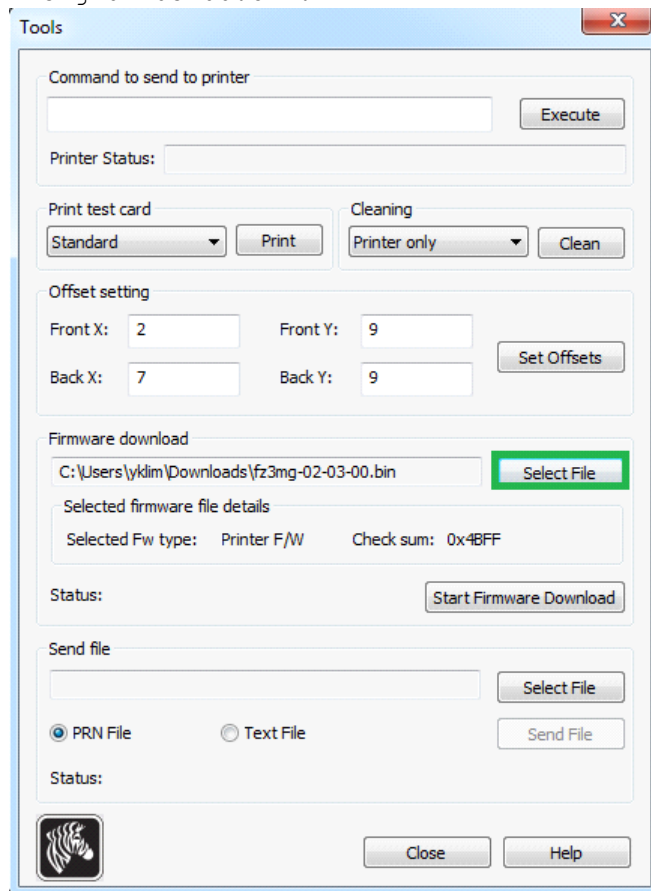
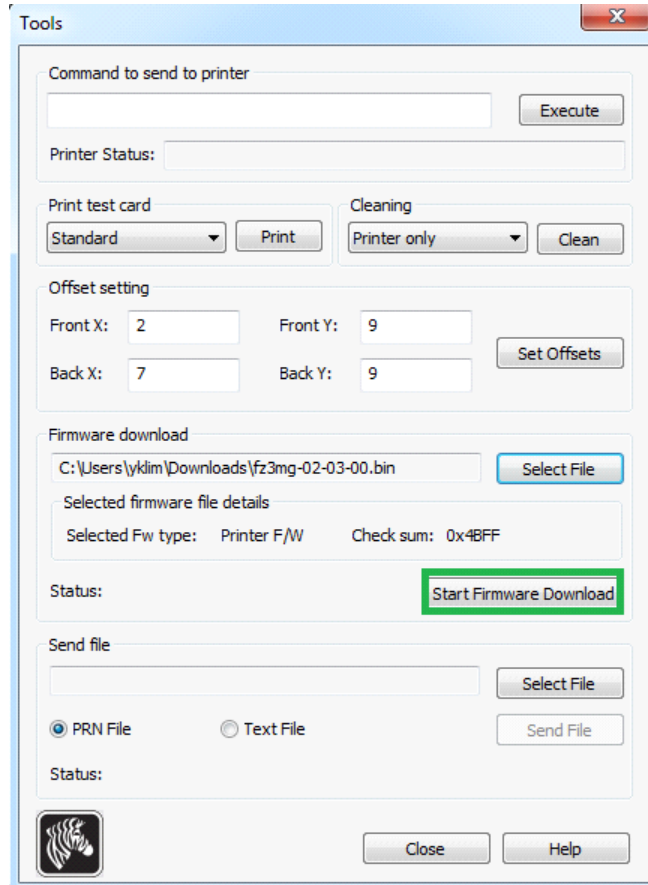


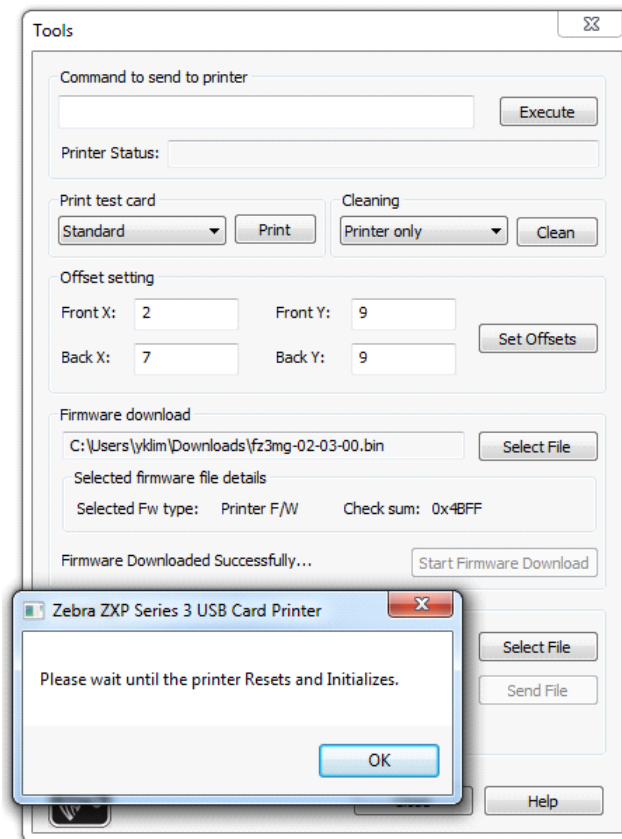
Figure 3-5 - Firmware download path

3. Click **Start Firmware Download** to download the firmware to the printer.



**Figure 3-6 - Firmware download**

4. Once the download completes, system will prompt that the download is successful, and device will be flashed with latest firmware.



**Figure 3-7 - Firmware initialization**

---

**Warning:** To avoid the printer from being malfunction, please wait until the reset and initialization are complete.

---

---

---

## 4 Monitoring Tools

For the printer to work effectively with SPMS, some DLLs (Monitoring Tools) *must* be removed. This step is *not applicable* if you are using the Beta version setup file: **zxp3-dz31cg-.05-47-00-00.exe**.

### 4.1 Removing a DLL

1. Go to C:\Windows\System32 folder.
2. Delete the following DLLs and .exe from the folder.
  - ZXPPlvAsyncUIClient.exe (If program is still running, end task from Task Manager)
  - ZXPPlvDelete.dll
  - ZXPPlvLmon.dll
  - ZXPPlvLmonNw.dll
  - ZXPPlvPackageHelper.exe
3. Restart the PC after removing the DLLs.

---

---

## 5 Management Setup

The following steps describes how to connect the Zebra ZXP SERIES 3 printer to Management module.

### 5.1 Configuring the Hardware

1. Run **Management module**, and select **Options** from the menu bar.
2. In the Options window, click the **Hardware** tab.
3. In the **Report Printers** section, select **Cards**, and then navigate to **Card Printer** **combo box** and choose **“Zebra ZXP Series 3 USB Card”** from the drop-down.

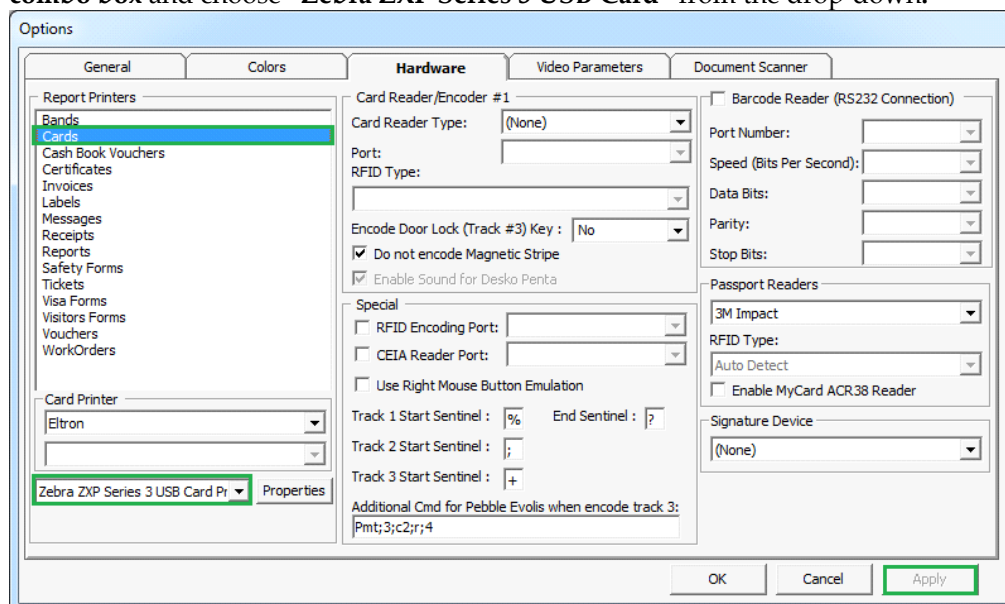


Figure 5-1 - Management module Hardware Options

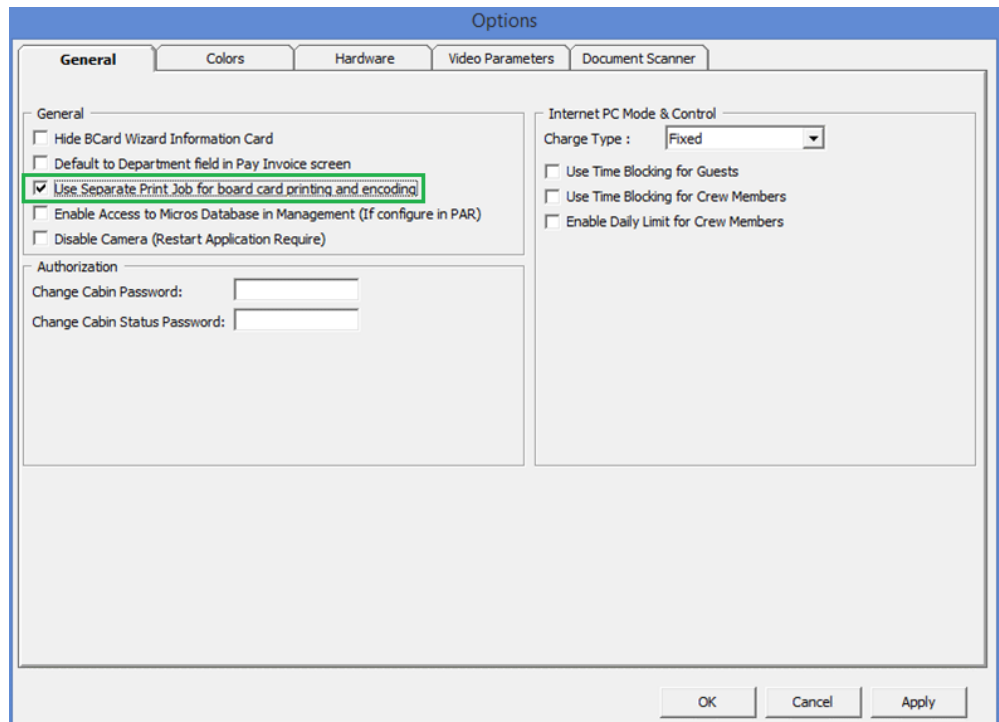
4. Click **Apply** to save the settings, and then **OK** to exit.

### 5.2 Setting up the Printer to Print Immediately

If you have chosen the option to **Start Printing Immediately** in **Printer settings**, below setup is require for the board card to print.

1. From the **Options** screen, click the **General** tab.
2. Select **Use Separate Print Job** for board card printing and encoding.





**Figure 5-2 – Management module Hardware General Setting**

3. Click **Apply** to save.