



Should I Stay or Should I Go? World to EnterpriseOne Migration

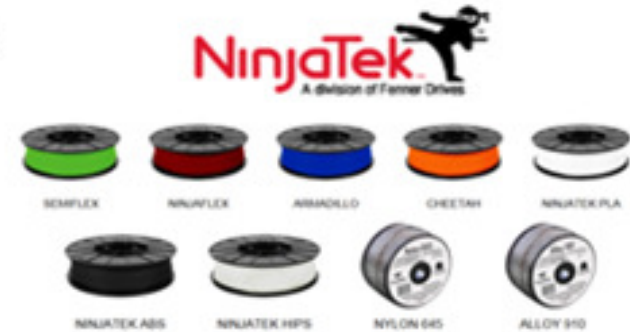
Matthew Neal
Business Systems Manager





Value-Added “Problem solving products”

- ❖ power transmission
- ❖ motion transfer
- ❖ conveying applications
- ❖ 3D printing



Our quality-driven teams design, manufacture and distribute a broad range of sophisticated and reliable components. (ISO 9001 certified)

100 + years of manufacturing, technical and commercial expertise.

Facilities

- ❖ Manheim, Pennsylvania
- ❖ Lancaster, Pennsylvania
- ❖ Wilmington, North Carolina
- ❖ Dewsbury, United Kingdom



Global sales team with presence on six continents.



Products and Solutions We Provide




NEW! EAGLE SURECONNECT
THE WELD, REINVENTED
LEARN MORE ▶



NEW! POWERTWIST
WEDGE PROFILE BELTS
LEARN MORE ▶

3V • 5V • SPZ • SPA • SPB



NINJATEK
HIGH PERFORMANCE 3D PRINTING MATERIALS
ninjatek.com ▶

NinjaTek



TRACKSTAR

Trackstar



T-MAX TENSIONERS

FMox



POWERMAX COMPOSITE SOLUTIONS

PowerMax



KEYLESS LOCKING DEVICES

Trantorque **B-LOC**



EAGLE POLYURETHANE BELTING

EAGLE

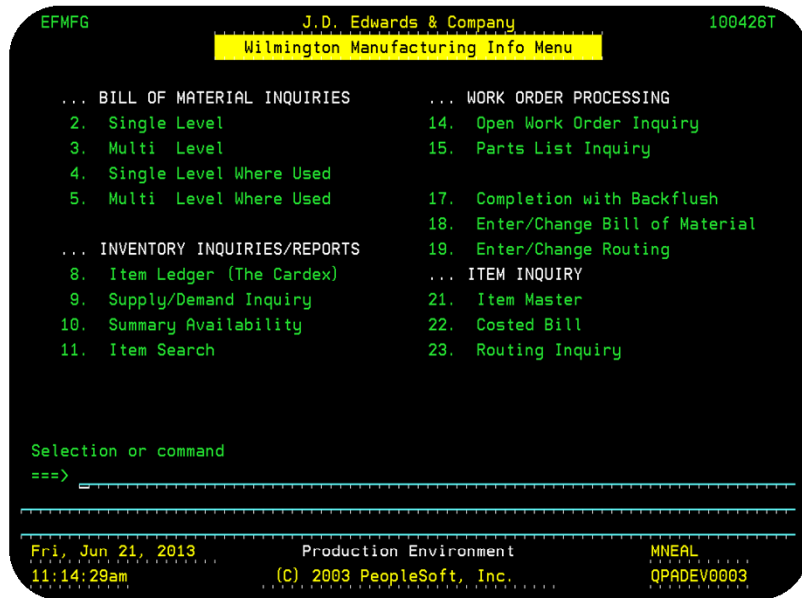


LINK BELTING FOR POWER TRANSMISSION

PowerTwist **PowerTwist** **SUPER T LINK** **NU T LINK**

 **Fenner Drives**[®]

Should I Stay or Should I Go?



VS



JDE World Previous Foot Print

- ❖ **JDE World 7.3 cum 13 (215 Users)**
 - ❑ In-house AS 400 IBM (I-series)
 - ❑ Out of date software due to customizations
 - ❑ Hard to extract data.....
- ❖ **UPS and FedEX Manifest Integrations**
- ❖ **Forms Print for building "Customer facing reports"**
- ❖ **Credit Card Integration**
- ❖ **WCBC Mobility Integration**
- ❖ **Showcase Query "Adhoc reporting"**
- ❖ **Custom interfaces for other needs**

Previous JDE World Problems

- ❖ Most, if not all modules had numerous customizations
- ❖ Hard to trouble shoot system issues due to custom code
- ❖ Limited outside software support
- ❖ Not user friendly
- ❖ Limited power users and knowledge of functionality
- ❖ No dashboard capabilities
- ❖ Difficult turning Data into Information
- ❖ Limited Business Processes documented
- ❖ Difficult to interface with new emerging technologies

Current JDE E1 Foot Print

❖ JDE E1 - 9.1.4.7 (215 Users)

- ❑ Foundations, Café One, E1 Pages, One View Reporting, Watchlist
- ❑ Financials, Product Data Management, Inventory Management
- ❑ Order Management, Supply Management
- ❑ Planning & Forecasting, Discrete Manufacturing,

❖ Hosted Virtual Servers (Linux and Windows)

❖ DSI MEP - 8.1 SP2 & Unibar - 9 (Barcoding & Labeling)

❖ Oracle 11g standard edition R2 & Oracle SQL Developer 4.0.3.16

❖ BI Publisher

Current JDE Foot Print “Continued.....”

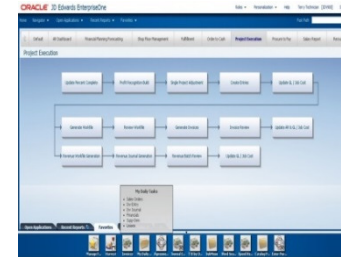
- ❖ **OBIEE FS “Oracle Business Intelligence”**
- ❖ **SalesForce “CRM”**
- ❖ **ProShip Manifest Software**
- ❖ **Extol “EDI transactions”**
- ❖ **Smarter Commerce “Online payments”**
- ❖ **iPad Air 2 and iPad Mini 3 - iOS 9.1 + SerialIO Blue Tooth Scanners**
- ❖ **Around 100 users (DSI and JDE Mobile Apps)**

Why Migrate to Enterprise One?

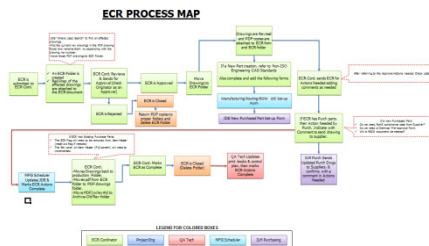
- ❖ Fenner was behind “Antiquated home grown bolt-on systems”
- ❖ UX (User Experience) “User required a better user Interface with easier navigation”
- ❖ Data Extraction “Easier for the average user”
- ❖ Reporting “Easy for normal users, exception-based with visual dashboards”
- ❖ Great user tools (E1 Pages, CafeOne, Hover forms, Auto suggest, etc.)
- ❖ Cost “Less Third party integrations”
- ❖ The need to leverage new technology “Drive business growth”
- ❖ Lean methodologies require robust technology “sustained efficiency gains.”
- ❖ Needed to Standardize Business Operations “align to JDE best practices”
- ❖ Streamline processes

Why Migrate to Enterprise One? “Continued...”

- ❖ Turning Data into Information
- ❖ Mobility “In-house development”
- ❖ Real-time analytics
- ❖ Dashboards “less paper reports”
- ❖ Speed to User
- ❖ Flexibility to change to new business needs
- ❖ Stronger-Deeper knowledge of core BP & ERP software functionality



Visual factory



Project Overview and Timeline

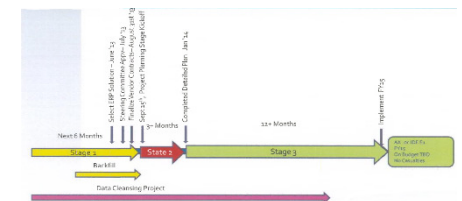
ERP Project and IT team breakdown.....

- ❖ 5 BPO's "Business Process Owners"
- ❖ 25 SME's "Subject Matter Experts"
- ❖ 1 Contract Project Manager
- ❖ 2 Developers in-house & 2 Contract Developers
- ❖ 3 IT Tech Support (Help Center)
- ❖ 1 Financial and 1 Order management consultant resource
- ❖ 1 Manufacturing-Forecasting and Planning consultant resource
- ❖ 1 CNC-Technical Integration resource

19 months

(Re-engineering of the Business)

No project team casualties



Delivered: On time On budget

Biggest Challenges

- ❖ Reduce Scope
- ❖ Ad-hoc reporting for user's needing joined tables.
- ❖ Setup of JDE E1 and Integration partners in parallel work stream.
- ❖ Increase training timeline (BPO's, SME's and End Users)
- ❖ Increase Development test of integrations and standard JDE functions
- ❖ Data cleanup & Data migration
- ❖ Accounting AAI's and General ledger records
- ❖ Oracle documentation and training video's on new 9.1 user tools
- ❖ Getting end users involved sooner
- ❖ Manage user expectations of new system.
- ❖ Communication "throughout all levels of the organization"

Say NO...

Lessons Learned

- ❖ **Make sure design scope is documented during each phase of project**
- ❖ **Customizations: Fully define the design, before coding**
- ❖ **Utilizing a strong developer while defining the mobile solutions**

Lessons Learned

- ❖ Demo proposed solutions “Take the time”
- ❖ Understand JDE E1 applications before building mobile applications
- ❖ JDE E1 solution is defined & setup before you start the mobile application design

Lessons Learned

- ❖ **Attend user training sessions for instant feedback on issues/concerns**
- ❖ **Allow time for developer to walk through the process and understand your process before writing any code**
- ❖ **Get users involved earlier during app testing. It's easier to make changes then, than later on during the process.**

Lessons Learned

- ❖ Challenge the JDE software to find solutions before you decide on a modification.
- ❖ When possible, engage a solution partner with a mobile partner (Nurture a collaborative environment)
- ❖ Determine testing time needed (Then double it)

Lessons Learned

- ❖ Find early adopters and engage them as much as possible
- ❖ Start the change management process early
- ❖ BPO SME End User

“This model worked well up to Go-live (Hard to Sustain)”

Benefits and Results



Big challenges in World that are now being solved with EnterpriseOne?

- ❖ Easy extraction of data to excel without third party software
- ❖ Reporting and data analytics
- ❖ User navigation and UX (GUI interface)
 - * shortcuts, recent reports, mobility, watchlist, QBE line,
 - * custom queries, auto suggest and hover forms not available.
- ❖ E1 Pages used as dashboards or departmental landing pages
 - Note: This allows the user to go to one place to get information.
- ❖ Media attachments with orders and part numbers.
- ❖ Data browser is an awesome tool for normal users (SME).
- ❖ **Reducing technology debt**

Benefits and Results

Processes we now use the JD Edwards software to be more efficient?

- ❖ We did use Showcase Query for exception reporting and now we use Watchlist.
- ❖ Unable to add supporting information with part numbers, orders, invoices, etc. and now use Media attachments.
- ❖ CafeOne views allow dynamic linking to other applications, which has reduced keystrokes and additional screen navigation.
- ❖ Custom grid views eliminate data and confusion for users by only showing what is important.

Next Steps

Future Solutions.....

- ❖ **Improving the user's experience** "All around (End user to Technical team)"
- ❖ **JDE app approvals (PO's)**
- ❖ **Ad-hoc Reporting for non-technical users**
- ❖ **Streamline RGA & Cycle count process through Mobile tools**
- ❖ **Error proofing processes** "through user feedback and hands on discovery"
- ❖ **Maximize E1 Pages (Watchlist & OVR)**
- ❖ **Use E1 Pages & CafeOne along with Sharepoint** "to improve the UX experience"
- ❖ **Maximize our multiple manifest capabilities**
- ❖ **Streamline apps** "reducing keystrokes and provide a single place for business information"

Thank you

from the

Project Delta Team

