

**Oracle® Retail Allocation**

Reports User Guide

Release 22.1.201.0

**F56721-01**

April 2022

Primary Author:

Contributing Author:

This software and related documentation are provided under a license agreement containing restrictions on use and disclosure and are protected by intellectual property laws. Except as expressly permitted in your license agreement or allowed by law, you may not use, copy, reproduce, translate, broadcast, modify, license, transmit, distribute, exhibit, perform, publish, or display any part, in any form, or by any means. Reverse engineering, disassembly, or decompilation of this software, unless required by law for interoperability, is prohibited.

The information contained herein is subject to change without notice and is not warranted to be error-free. If you find any errors, please report them to us in writing.

If this is software or related documentation that is delivered to the U.S. Government or anyone licensing it on behalf of the U.S. Government, then the following notice is applicable:

U.S. GOVERNMENT END USERS: Oracle programs, including any operating system, integrated software, any programs installed on the hardware, and/or documentation, delivered to U.S. Government end users are "commercial computer software" pursuant to the applicable Federal Acquisition Regulation and agency-specific supplemental regulations. As such, use, duplication, disclosure, modification, and adaptation of the programs, including any operating system, integrated software, any programs installed on the hardware, and/or documentation, shall be subject to license terms and license restrictions applicable to the programs. No other rights are granted to the U.S. Government.

This software or hardware is developed for general use in a variety of information management applications. It is not developed or intended for use in any inherently dangerous applications, including applications that may create a risk of personal injury. If you use this software or hardware in dangerous applications, then you shall be responsible to take all appropriate fail-safe, backup, redundancy, and other measures to ensure its safe use. Oracle Corporation and its affiliates disclaim any liability for any damages caused by use of this software or hardware in dangerous applications.

Oracle and Java are registered trademarks of Oracle and/or its affiliates. Other names may be trademarks of their respective owners.

Intel and Intel Xeon are trademarks or registered trademarks of Intel Corporation. All SPARC trademarks are used under license and are trademarks or registered trademarks of SPARC International, Inc. AMD, Opteron, the AMD logo, and the AMD Opteron logo are trademarks or registered trademarks of Advanced Micro Devices. UNIX is a registered trademark of The Open Group.

This software or hardware and documentation may provide access to or information about content, products, and services from third parties. Oracle Corporation and its affiliates are not responsible for and expressly disclaim all warranties of any kind with respect to third-party content, products, and services unless otherwise set forth in an applicable agreement between you and Oracle. Oracle Corporation and its affiliates will not be responsible for any loss, costs, or damages incurred due to your access to or use of third-party content, products, or services, except as set forth in an applicable agreement between you and Oracle.

### **Value-Added Reseller (VAR) Language**

#### **Oracle Retail VAR Applications**

The following restrictions and provisions only apply to the programs referred to in this section and licensed to you. You acknowledge that the programs may contain third party software (VAR applications) licensed to Oracle. Depending upon your product and its version number, the VAR applications may include:

- (i) the **MicroStrategy** Components developed and licensed by MicroStrategy Services Corporation (MicroStrategy) of McLean, Virginia to Oracle and imbedded in the MicroStrategy for Oracle Retail Data Warehouse and MicroStrategy for Oracle Retail Planning & Optimization applications.
- (ii) the **Wavelink** component developed and licensed by Wavelink Corporation (Wavelink) of Kirkland, Washington, to Oracle and imbedded in Oracle Retail Mobile Store Inventory Management.
- (iii) the software component known as **Access Via**™ licensed by Access Via of Seattle, Washington, and imbedded in Oracle Retail Signs and Oracle Retail Labels and Tags.
- (iv) the software component known as **Adobe Flex**™ licensed by Adobe Systems Incorporated of San Jose, California, and imbedded in Oracle Retail Promotion Planning & Optimization application.

You acknowledge and confirm that Oracle grants you use of only the object code of the VAR Applications. Oracle will not deliver source code to the VAR Applications to you. Notwithstanding any other term or condition of the agreement and this ordering document, you shall not cause or permit alteration of any VAR

Applications. For purposes of this section, "alteration" refers to all alterations, translations, upgrades, enhancements, customizations or modifications of all or any portion of the VAR Applications including all reconfigurations, reassembly or reverse assembly, re-engineering or reverse engineering and recompilations or reverse compilations of the VAR Applications or any derivatives of the VAR Applications. You acknowledge that it shall be a breach of the agreement to utilize the relationship, and/or confidential information of the VAR Applications for purposes of competitive discovery.

The VAR Applications contain trade secrets of Oracle and Oracle's licensors and Customer shall not attempt, cause, or permit the alteration, decompilation, reverse engineering, disassembly or other reduction of the VAR Applications to a human perceivable form. Oracle reserves the right to replace, with functional equivalent software, any of the VAR Applications in future releases of the applicable program.



---

---

# Contents

<b>Send Us Your Comments</b> .....	vii
<b>Preface</b> .....	ix
Audience .....	ix
Documentation Accessibility .....	ix
Customer Support .....	ix
Improved Process for Oracle Retail Documentation Corrections .....	x
Oracle Retail Documentation on the Oracle Help Center (docs.oracle.com) .....	x
Conventions .....	x
<b>1 Allocation Reports</b>	
<b>2 Allocator Dashboard</b>	
Purchase Order Arrivals Report .....	2-2
Stock to Sales Report .....	2-3
Sales - Top Report .....	2-3
Sales - Bottom Report .....	2-4
<b>3 Contextual Reports</b>	
Stock to Sales/Issues Report .....	3-1
Allocated to Plan/Forecast Report .....	3-2
Open to Buy (OTB) Report .....	3-3



---

---

## Send Us Your Comments

Oracle® Retail Allocation/Allocation Cloud Service Reports User Guide, Release 22.1.201.0.

Oracle welcomes customers' comments and suggestions on the quality and usefulness of this document.

Your feedback is important, and helps us to best meet your needs as a user of our products. For example:

- Are the implementation steps correct and complete?
- Did you understand the context of the procedures?
- Did you find any errors in the information?
- Does the structure of the information help you with your tasks?
- Do you need different information or graphics? If so, where, and in what format?
- Are the examples correct? Do you need more examples?

If you find any errors or have any other suggestions for improvement, then please tell us your name, the name of the company who has licensed our products, the title and part number of the documentation and the chapter, section, and page number (if available).

---

---

**Note:** Before sending us your comments, you might like to check that you have the latest version of the document and if any concerns are already addressed. To do this, access the Online Documentation available on the Oracle Technology Network Web site. It contains the most current Documentation Library plus all documents revised or released recently.

---

---

Send your comments to us using the electronic mail address: [retail-doc\\_us@oracle.com](mailto:retail-doc_us@oracle.com)

Please give your name, address, electronic mail address, and telephone number (optional).

If you need assistance with Oracle software, then please contact your support representative or Oracle Support Services.

If you require training or instruction in using Oracle software, then please contact your Oracle local office and inquire about our Oracle University offerings. A list of Oracle offices is available on our Web site at <http://www.oracle.com>.





---

---

# Preface

The *Oracle® Retail Allocation/Allocation Cloud Service Reports User Guide* describes the reports available through the Oracle Retail Sales Audit Reports functions.

## Audience

This Reports User Guide is for users and administrators of Oracle Retail Sales Audit. This includes merchandisers, buyers, business analysts, and administrative personnel.

## Documentation Accessibility

For information about Oracle's commitment to accessibility, visit the Oracle Accessibility Program website at

<http://www.oracle.com/pls/topic/lookup?ctx=acc&id=docacc>.

### Access to Oracle Support

Oracle customers that have purchased support have access to electronic support through My Oracle Support. For information, visit

<http://www.oracle.com/pls/topic/lookup?ctx=acc&id=info> or visit

<http://www.oracle.com/pls/topic/lookup?ctx=acc&id=trs> if you are hearing impaired.

## Customer Support

To contact Oracle Customer Support, access My Oracle Support at the following URL:

<https://support.oracle.com>

When contacting Customer Support, please provide the following:

- Product version and program/module name
- Functional and technical Description of the problem (include business impact)
- Detailed step-by-step instructions to re-create
- Exact error message received
- Window shots of each step you take

## Improved Process for Oracle Retail Documentation Corrections

To more quickly address critical corrections to Oracle Retail documentation content, Oracle Retail documentation may be republished whenever a critical correction is needed. For critical corrections, the republication of an Oracle Retail document may at times not be attached to a numbered software release; instead, the Oracle Retail document will simply be replaced on the Oracle Technology Network Web site, or, in the case of Data Models, to the applicable My Oracle Support Documentation container where they reside.

This process will prevent delays in making critical corrections available to customers. For the customer, it means that before you begin installation, you must verify that you have the most recent version of the Oracle Retail documentation set. Oracle Retail documentation is available on the Oracle Technology Network at the following URL:

<http://www.oracle.com/technetwork/documentation/oracle-retail-100266.html>

An updated version of the applicable Oracle Retail document is indicated by Oracle part number, as well as print date (month and year). An updated version uses the same part number, with a higher-numbered suffix. For example, part number E123456-02 is an updated version of a document with part number E123456-01.

If a more recent version of a document is available, that version supersedes all previous versions.

## Oracle Retail Documentation on the Oracle Help Center (docs.oracle.com)

Oracle Retail product documentation is also available on the following Web site:

<https://docs.oracle.com/en/industries/retail/index.html>

(Data Model documents can be obtained through My Oracle Support.)

## Conventions

The following text conventions are used in this document:

Convention	Meaning
<b>boldface</b>	Boldface type indicates graphical user interface elements associated with an action, or terms defined in text or the glossary.
<i>italic</i>	Italic type indicates book titles, emphasis, or placeholder variables for which you supply particular values.
monospace	Monospace type indicates commands within a paragraph, URLs, code in examples, text that appears on the window, or text that you enter.

---

---

# Allocation Reports

Allocation has two types of reports — dashboard reports and contextual reports. Both types embed business intelligence into the fabric of the solution.

Dashboard reports are role-based and are intended to highlight actionable or frequently monitored activities in order to help the allocator manage to exceptions in their business and prioritize their work for the day. Actions taken from dashboard reports launch into Allocation workflows, allowing the allocator to act in the context of what they were viewing in the dashboard.

Contextual reports are displayed in selected Allocation pages and allow for an extension of information available in the associated screen, providing further details about a transaction or entity that is not present on the screen. It dynamically refreshes when certain actions (called contextual events) are performed.



## Allocator Dashboard

The dashboard surfaces information in a manner that will give allocators visibility to the highest priority tasks, such as incoming POs that need allocating or re-allocating and visibility to potential stock shortages in stores based on sales forecasts. The dashboard also provides a quick way for the allocator to take action on these alerts by launching them contextually into the appropriate Allocation workflows.

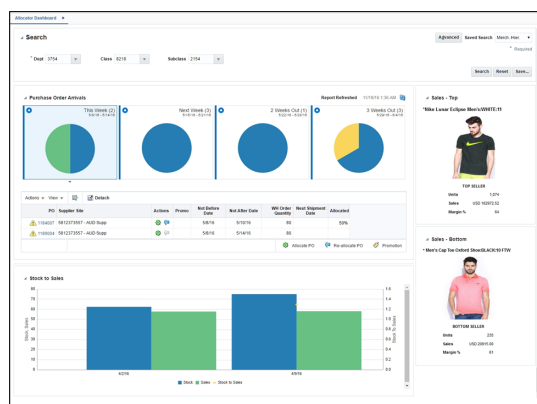
The dashboard reports can be viewed by navigating to Tasks menu > Reports > Allocator Dashboard in Allocation.

Users can filter data across the dashboard reports by selecting appropriate values in the prompts provided. You must select a department, but you can also optionally filter on class and subclass.

Allocator Dashboard Reports:

- Purchase Order Arrivals Report
- Stock to Sales Report
- Sales – Top Report
- Sales – Bottom Report

**Figure 2–1 Allocator Dashboard Report**



# Purchase Order Arrivals Report

**Figure 2–2 Purchase Order Arrivals Report**



The report consists of two parts:

1. Tile view that displays the number of POs that are incoming segregated by their not after date in This Week, Next Week, 2 Weeks Out and 3 Weeks Out, respectively. The report also indicates the number split of these incoming POs that are unallocated, fully allocated and partially allocated. You can view the pie chart to deduce the ratio of the incoming POs that are fully allocated, partially allocated and unallocated. You can select a tile to view the details of the POs in a table below that are expected to be received in the given time period. By default, the 'This Week' tile is selected. A refresh feature is also available to update the tiles to reflect the latest data conditions for the selected merchandise hierarchy.
2. Tabular report that lists the POs and the corresponding ordered quantities that are expected to be received in the time line corresponding to the selected tile. Below PO details can be viewed:
  - a. Supplier Site against which the PO is raised
  - b. Not Before Date and Not After Date of the PO; that is, the time window within which the PO is expected to be received
  - c. Next Shipment Date, the date when the next shipment is expected to be received for the given PO
  - d. Ordered Qty, the remaining ordered quantity that is expected to be received in the chosen time period
  - e. Allocated %, which is the percentage of the ordered qty that has already been allocated for a given PO

An alert is displayed against the POs that have not yet been allocated above the defined Percentage Allocated PO Threshold beyond the PO Allocation Time threshold, which are system options. For example, if the Percentage Allocated PO Threshold is set to 80% and the PO Allocation Time Threshold is set to 5 days, and if the order quantity expected to be received is 100, then an alert is displayed for a PO that has a Not After Date that is less than 5 days from today and if the already allocated quantity against the PO is less than 80.

The report also indicates if any of the items on the given PO is on a promotion during the given time period as additional guidance in prioritizing the allocation process.

Using the below action links, the allocator can launch the Allocation Maintenance window to create or edit allocations.

- Allocate PO – You can click on the allocate PO icon to initiate a workflow to create an allocation for all items on the Purchase Order for the quantities expected to be

received on the PO. The allocate PO is displayed only if the quantity against the PO that is yet to be received has not yet been completely allocated.

- **Reallocate** - You can click on the Reallocate icon to initiate a workflow to edit an existing allocation associated to the given PO. This is displayed only if an allocation already exists for the given PO. In case multiple allocations exist against the same PO, the allocation that was created most recently is launched.

The allocator can also click on the purchase order number hyperlink and contextually launch the PO Header Maintenance window of Merchandising and view the purchase order details. This requires that the user has the privileges to view or maintain a purchase order in Merchandising.

---

**Note:** If the items on a given PO have varied units of measure, **Multi UOM** is displayed in the **Ordered Qty** field, as quantity aggregation cannot be performed across multiple UOMs.

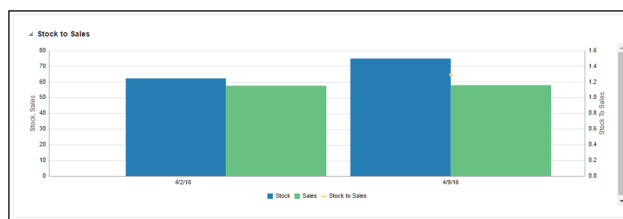
---

## Stock to Sales Report

The Stock to Sales report compares the stock available for sale at the beginning of the given week and the corresponding sales achieved by the end of the same week. Data for six weeks prior to the current week can be viewed in this report. The stock and sales is aggregated across all items belonging to the Department/Class/Subclass selected in the prompts and group of stores that source from the selected VWH.

The report also plots the trend of Stock to Sales ratio for six previous weeks to provide historical context to the allocator of the inventory levels in their stores and help gauge where overage or shortage situations occurred.

**Figure 2-3 Stock to Sales Report**



## Sales - Top Report

The Sales - Top report displays the top selling item across the Department/Class/Subclass selected in the prompts for a day prior to the current business day.

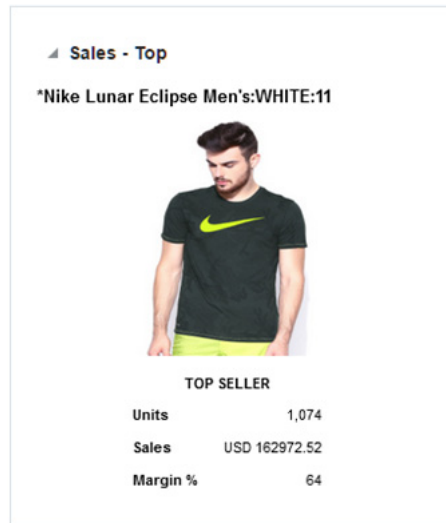
Additional data on the given item such as the item image, total sales units, retail value of sales and the margin can be viewed.

---

**Note:** For fashion items, the top seller will represent an item parent - diff aggregate.

---

**Figure 2–4 Sales - Top Report**



## Sales - Bottom Report

The Sales - Bottom report displays the least selling item across the Department/Class/Subclass selected in the prompts for a day prior to the current business day.

Additional data on the given item such as the item image, total sales units, retail value of sales and the margin can be viewed.

---

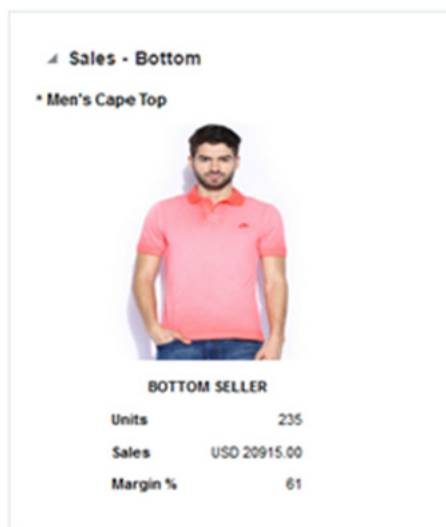
---

**Note:** For fashion items, the bottom seller will represent an item parent - diff aggregate.

---

---

**Figure 2–5 Sales - Bottom Report**



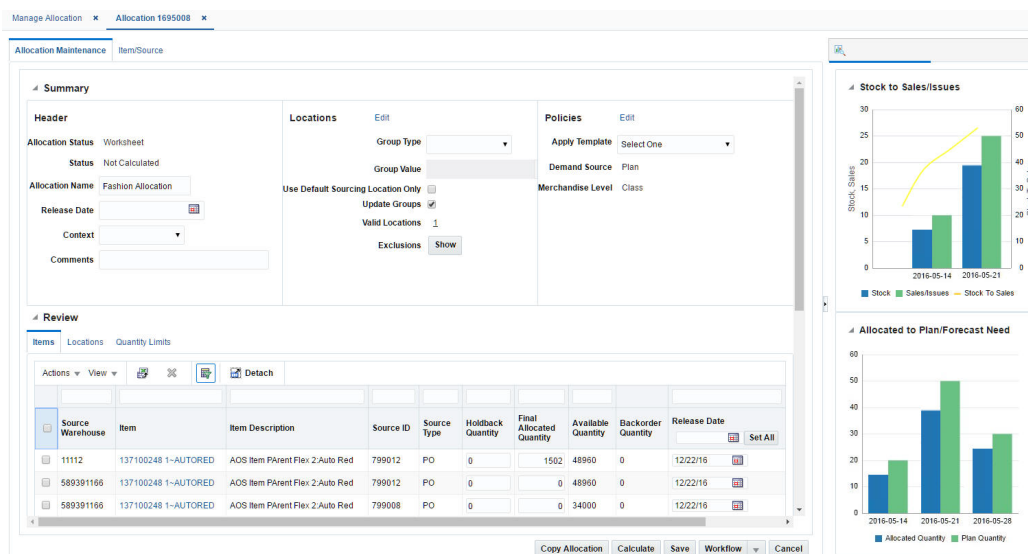


## Contextual Reports

Contextual Reports are displayed in a collapsible pane of some Allocation pages to provide additional information to the allocator in the context of a particular workflow, aiding in decision making. The reports are considered contextual, as the data displayed in the page influences what is displayed in the report.

The contextual pane also offers opportunities for customization of the solution. See the *Merchandising Customization and Extension Guide* for more details on modifying the base reports displayed in the Allocation contextual panes or adding custom reports.

**Figure 3–1 Contextual Pane in Allocation Maintenance**

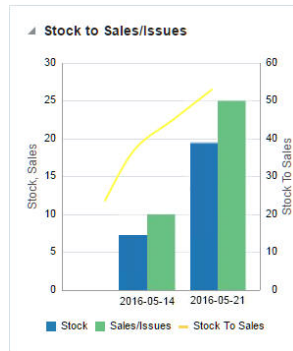


### Stock to Sales/Issues Report

The Stock to Sales/Issues report, displayed in the Allocation Maintenance page, displays the stock available for sale at the beginning of the given week and the corresponding sales at the given store or issues at the given warehouse achieved by the end of the same week. Data for four weeks prior to the current week can be viewed in this report. The report also plots the trend of Stock to Sales ratio across four previous weeks.

As an allocator moves between rows in the Results table in Allocation Maintenance, the report will refresh to show information in-context to the item and the destination location corresponding to the row highlighted.

**Figure 3–2 Stock to Sales/Issues Report**

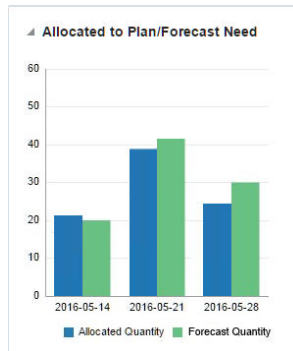


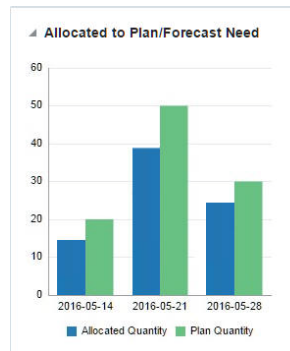
## Allocated to Plan/Forecast Report

The Allocated to Plan/Forecast report, displayed in the Allocation Maintenance page, is to be used primarily for pre-season allocation decision-making, before there is stock available at the stores. It shows the relationship between the need at a location, displayed as the sales forecast or sales plan for the next 4 weeks, and the allocations that are scheduled for delivery in those weeks. The forecasted item need is used if the Need Calculation Type = Forecast and the plan need is used if Need Calculation Type = Plan.

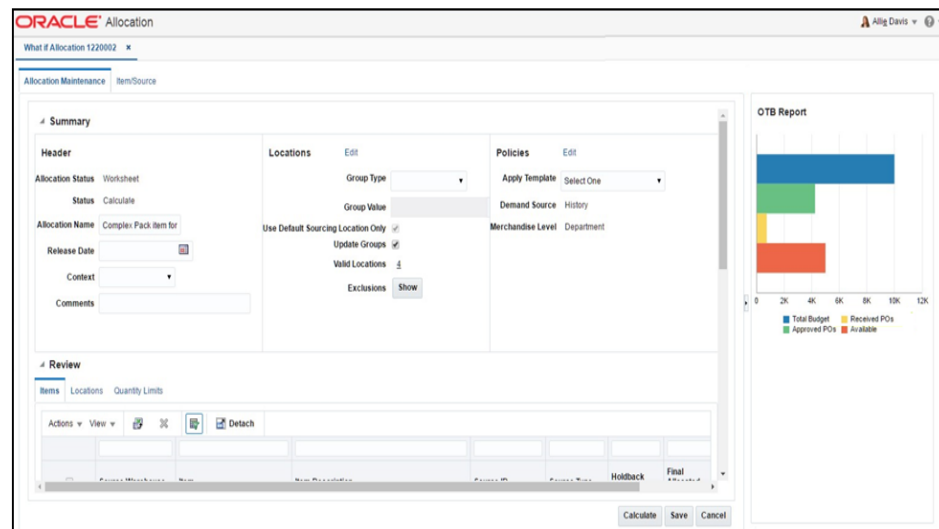
As a user moves between rows in the Results table in Allocation Maintenance, the report will refresh to show information contextual to the item and the destination location corresponding to the row highlighted.

**Figure 3–3 Allocated to Plan/Forecast Report; Need Calculation Type = Forecast**



**Figure 3–4 Allocated to Plan/Forecast Report; Need Calculation Type = Plan**

## Open to Buy (OTB) Report

**Figure 3–5 OTB Report in What If Allocation Page**

What-if allocations allow an allocator to look at options for creating a PO in Allocation. If the PO is created and approved in Merchandising, it would impact the OTB budget for the subclass or subclasses of the items present on the PO.

The OTB contextual report, displayed in the What If Allocation page, provides an early visibility to the allocator on whether there is budget available to create a purchase order for the given item.

It lists the total budget, budget taken up by approved POs, budget taken up by received POs and the total remaining (available) budget.

As a user moves between rows in the Review table in Allocation Maintenance for a What If allocation, the OTB report will refresh to show information contextual to the subclass of the item corresponding to the row highlighted.

**Figure 3–6 OTB Report**

