

Oracle® Payment Interface
Oracle Hospitality 9700 POS MGDH
Installation Guide
Release 6.1.1
E85866-01

April 2017

Copyright © 2001, 2017, Oracle and/or its affiliates. All rights reserved.

This software and related documentation are provided under a license agreement containing restrictions on use and disclosure and are protected by intellectual property laws. Except as expressly permitted in your license agreement or allowed by law, you may not use, copy, reproduce, translate, broadcast, modify, license, transmit, distribute, exhibit, perform, publish, or display any part, in any form, or by any means. Reverse engineering, disassembly, or decompilation of this software, unless required by law for interoperability, is prohibited.

The information contained herein is subject to change without notice and is not warranted to be error-free. If you find any errors, please report them to us in writing.

If this software or related documentation is delivered to the U.S. Government or anyone licensing it on behalf of the U.S. Government, then the following notice is applicable:

U.S. GOVERNMENT END USERS: Oracle programs, including any operating system, integrated software, any programs installed on the hardware, and/or documentation, delivered to U.S. Government end users are "commercial computer software" pursuant to the applicable Federal Acquisition Regulation and agency-specific supplemental regulations. As such, use, duplication, disclosure, modification, and adaptation of the programs, including any operating system, integrated software, any programs installed on the hardware, and/or documentation, shall be subject to license terms and license restrictions applicable to the programs. No other rights are granted to the U.S. Government.

This software or hardware is developed for general use in a variety of information management applications. It is not developed or intended for use in any inherently dangerous applications, including applications that may create a risk of personal injury. If you use this software or hardware in dangerous applications, then you shall be responsible to take all appropriate fail-safe, backup, redundancy, and other measures to ensure its safe use. Oracle Corporation and its affiliates disclaim any liability for any damages caused by use of this software or hardware in dangerous applications.

Oracle and Java are registered trademarks of Oracle and/or its affiliates. Other names may be trademarks of their respective owners.

Intel and Intel Xeon are trademarks or registered trademarks of Intel Corporation. All SPARC trademarks are used under license and are trademarks or registered trademarks of SPARC International, Inc. AMD, Opteron, the AMD logo, and the AMD Opteron logo are trademarks or registered trademarks of Advanced Micro Devices. UNIX is a registered trademark of The Open Group.

This software or hardware and documentation may provide access to or information about content, products, and services from third parties. Oracle Corporation and its affiliates are not responsible for and expressly disclaim all warranties of any kind with respect to third-party content, products, and services unless otherwise set forth in an applicable agreement between you and Oracle. Oracle Corporation and its affiliates will not be responsible for any loss, costs, or damages incurred due to your access to or use of third-party content, products, or services, except as set forth in an applicable agreement between you and Oracle.

Contents

Tables	iv
Figures	v
Preface	vi
Audience.....	vi
Customer Support	vi
Documentation	vi
Revision History.....	vi
1 Pre-Installation Steps.....	1-1
Before Installing the OPI.....	1-1
2 Network Considerations	2-1
3 9700 Server Configuration	3-1
Adding an Interface	3-1
Configuring RVC.....	3-2
Employee Configuration	3-5
Service Charges	3-7
Configuring Tender Media Records	3-8
Touch Screen Design	3-10
4 Installing the MGDH Driver	4-1
Installing MGDH on the 9700 Server.....	4-1
Point-of-Sale (POS) End-of-Day (EOD)	4-16
5 Installing the OPI	5-1
OPI Installation Steps	5-1
Configuring the OPI	5-14

Tables

Table 3-1 Insert Interfaces	3-1
Table 3-2 EMC RVC Parameters.....	3-2
Table 3-3 Table Service Restaurant (TSR) Payment Screen.....	3-10
Table 3-4 Quick Service Restaurant (QSR) Payment Screen.....	3-10
Table 4-1 MGDH Database Information Settings	4-2
Table 4-2 MGDH Server Setup Options	4-9
Table 4-3 MGDH POSEOD Setup Options	4-10
Table 4-4 Microsoft Windows Task Scheduler Settings	4-16
Table 5-1 OPI Installer Desktop Icon	5-1
Table 5-2 OPI Terminal Mode Configuration Settings	5-15
Table 5-3 OPI Terminal Mode Settings.....	5-15
Table 5-4 OPI Middleware Mode Configuration Settings	5-16
Table 5-5 OPI Middleware Mode Settings.....	5-16
Table 5-6 OPI Merchant Details Configuration	5-19
Table 5-7 OPI POS Terminal Configuration	5-21

Figures

Figure 3-1 EMC Interfaces tab	3-1
Figure 3-2 EMC RVC Parameters General Options	3-3
Figure 3-3 EMC RVC Parameters Format Options	3-4
Figure 3-4 EMC Employee Maintenance - Employee Classes	3-5
Figure 3-5 EMC Employee Maintenance Tenders Options	3-6
Figure 3-6 EMC Service Charges Options	3-7
Figure 3-7 EMC Tender Media Options	3-8
Figure 3-8 EMC Tender Media POS Behavior Options	3-9
Figure 3-9 EMC Touchscreen Design Module	3-11
Figure 4-1 MGDH OPI Installation Package	4-1
Figure 4-2 MGDH POS Config Files Setup	4-2
Figure 4-12 MGDH OPI Installation Screen	4-12
Figure 4-14 MGDH Modules Installation Screen	4-14
Figure 4-15 MGDH OPI Installation Completion Prompt	4-15
Figure 5-1 OPI Installation Wizard	5-1
Figure 5-2 OPI Setup Validation Screen	5-2
Figure 5-3 OPI Components Installation Screen	5-3
Figure 5-4 OPI MySQL Root Password Setup	5-4
Figure 5-5 OPI Creating a DB User	5-5
Figure 5-6 OPI Communication Channel Selection Screen	5-6
Figure 5-7 OPI Configuring POS Communication Screen	5-7
Figure 5-8 OPI Service Restart Task Scheduler	5-8
Figure 5-9 OPI Select Destination Location Screen	5-9
Figure 5-10 OPI Open Source Project Code and License Storage Locations	5-10
Figure 5-11 OPI Select Start Menu Folder	5-11
Figure 5-12 OPI Installation Screen	5-12
Figure 5-13 OPI Installation Progress Screen	5-13
Figure 5-14 OPI Configuration Tool - Terminal Mode	5-14
Figure 5-15 OPI POS Configuration	5-17
Figure 5-16 OPI Add New Property Screen	5-18
Figure 5-17 OPI Merchant Details Entry Screen	5-19
Figure 5-18 OPI Add Terminal Screen	5-20
Figure 5-19 OPI Terminal Information Entry Screen	5-21
Figure 5-20 OPI Configuration Summary Screen	5-22
Figure 5-21 Save OPI Configuration Settings	5-23
Figure 5-22 OPI Installation Completion	5-24

Preface

This document describes the following steps to install the MICROS Gateway Device Handler (MGDH) and the Oracle Payment Interface (OPI).

- Installing the MGDH
- Installing the Oracle Payment Interface
- Configuring the POS for the OPI using the MGDH
- Using the Middleware mode or the Terminal mode with Pay@Table

Connecting the Oracle Payment Interface with the Oracle Hospitality RES POS native driver is described in another document. The *Oracle Payment Interface Oracle Hospitality RES POS Installation Guide* contains more information.

Audience

This document is intended for installers of the OPI and MGDH.

Customer Support

To contact Oracle Customer Support, access My Oracle Support at the following URL: <https://support.oracle.com>

When contacting Customer Support, please provide the following:

- Product version and program/module name
- Functional and technical description of the problem (include business impact)
- Detailed step-by-step instructions to re-create
- Exact error message received and any associated log files
- Screen shots of each step you take

Documentation

Oracle Hospitality product documentation is available on the Oracle Help Center at <http://docs.oracle.com/en/industries/hospitality/>

Revision History

Date	Description of Change
April 2017	<ul style="list-style-type: none">• Initial publication

1 Pre-Installation Steps

Before Installing the OPI

Complete the following tasks before installing:

- The OPI application requires Microsoft .NET Framework version 4.0 or higher.
- You cannot upgrade from previous versions of MICROS Gateway Device Handler (MGDH) for other solutions to MGDH version 6.1 MR1.
- You cannot upgrade from previous versions of MPG to OPI 6.1 MR1.
- If a previous MGDH installation exists, go to Programs and Features to uninstall the previous MGDH installation, then you can install the latest MGDH release.
- Verify with the merchant to setup table service (TSR) or quick service (QSR), or both. QSR does not support tips.
- Verify with the merchant if activating the Refund functionality, the merchant must control the privilege for this function.
- Verify with the merchant if they offer a guest the option to get cash back with their purchase, then activate the **Sale & Cash** option. This is only available for QSR.
- Confirm Microsoft Visual C++ 2010 is installed on the computer where MGDH and OPI are installed.
- Oracle Payment Interface requires at least 6 GB of free disk space.
- You must install both MGDH and OPI as a System Administrator.
- You must enter the user name and password of a Microsoft Windows local administrator during the installation.
- You must enter the MICROS database user name and password to install MGDH.

During the installation you must confirm the following:

- Merchant ID's
- Receipt "Header" and "Trailer" details
- Tender Media numbers for each card type
- IP address of the OPI Server
- If there is an existing MySQL database installed, then the SQL root password is required.
- Workstation IDs and IPs that integrate with the PIN pad.

2 Network Considerations

You must consider the following points for the network:

- OPI listens on the TCP port 5098 for incoming messages from MGDH, this port must be open internally on the merchant's network.
- The port for the PIN pad depends the partner, confirm with the partner and confirm the corresponding port is open.

3 9700 Server Configuration

Adding an Interface

To configure the 9700 Server you must add a new interface.

1. In the Enterprise Management Console, go to the Interface tab.
2. Define the following Interface values.

Table 3-1 Insert Interfaces

Interface	Value
System Name	MGDH
Service Type	PMS /SIM
Communication Type	TCP/IP
Timeout	210
ISL Script Name	pms7

3. Select the check box to enable the option to **Use 19 Digit Reference Entry for PMS Inquiries.**

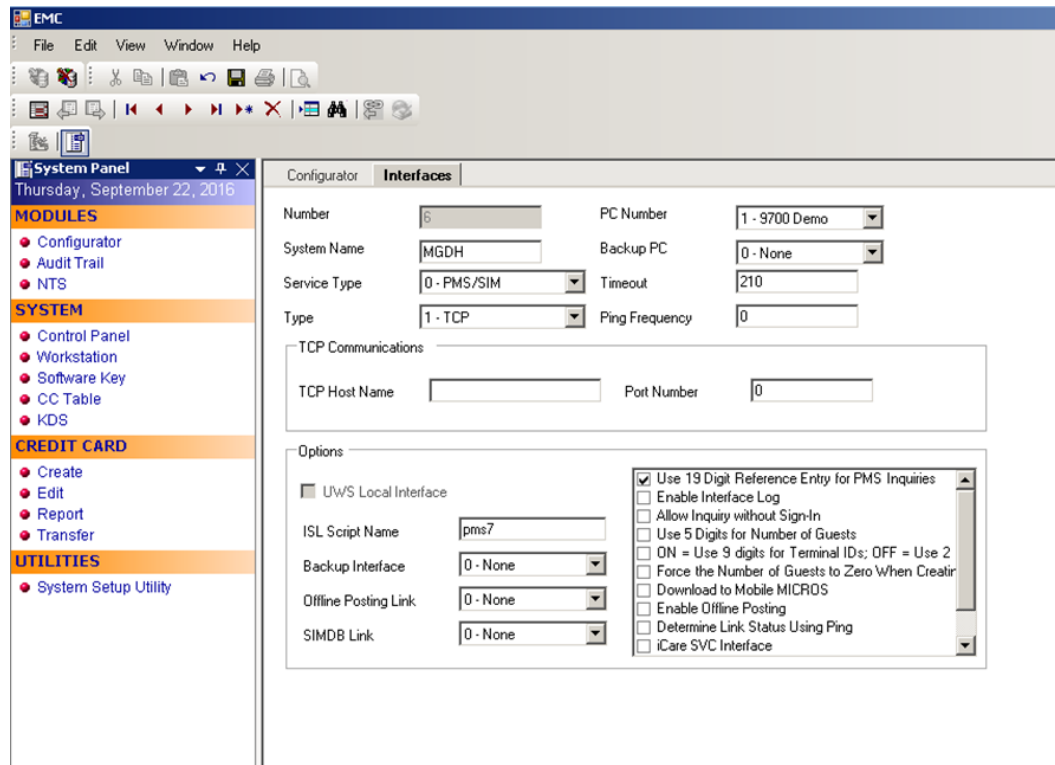


Figure 3-1 EMC Interfaces tab

Configuring RVC

To configure the RVC, link the interface MGDH to each RVC.

1. Go to the Enterprise Management Console.
2. Go to the RVC Parameters tab and link the MGDH interface to each RVC.

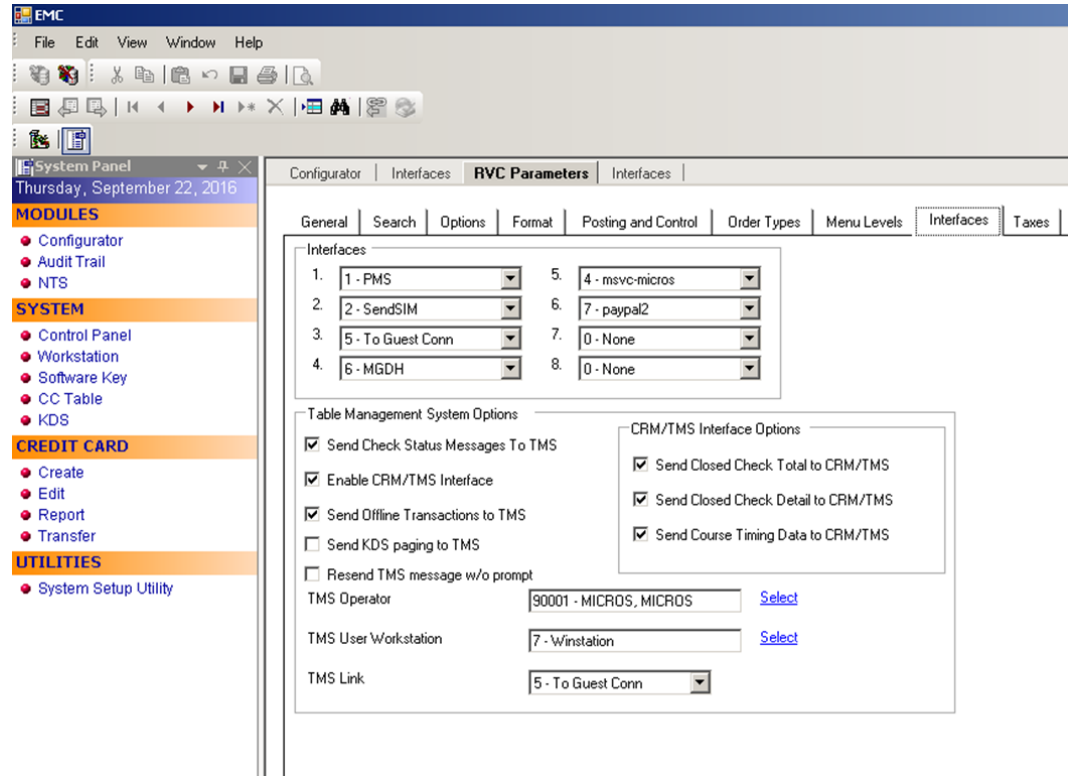


Table 3-2 EMC RVC Parameters

If the RVC is configured in QSR mode, then activate the options below:

- Select the check box **Do Not Prompt for Tips (No Overtendering if Charge Tip is Required)**.
- Select **Allow Fast Transactions**.

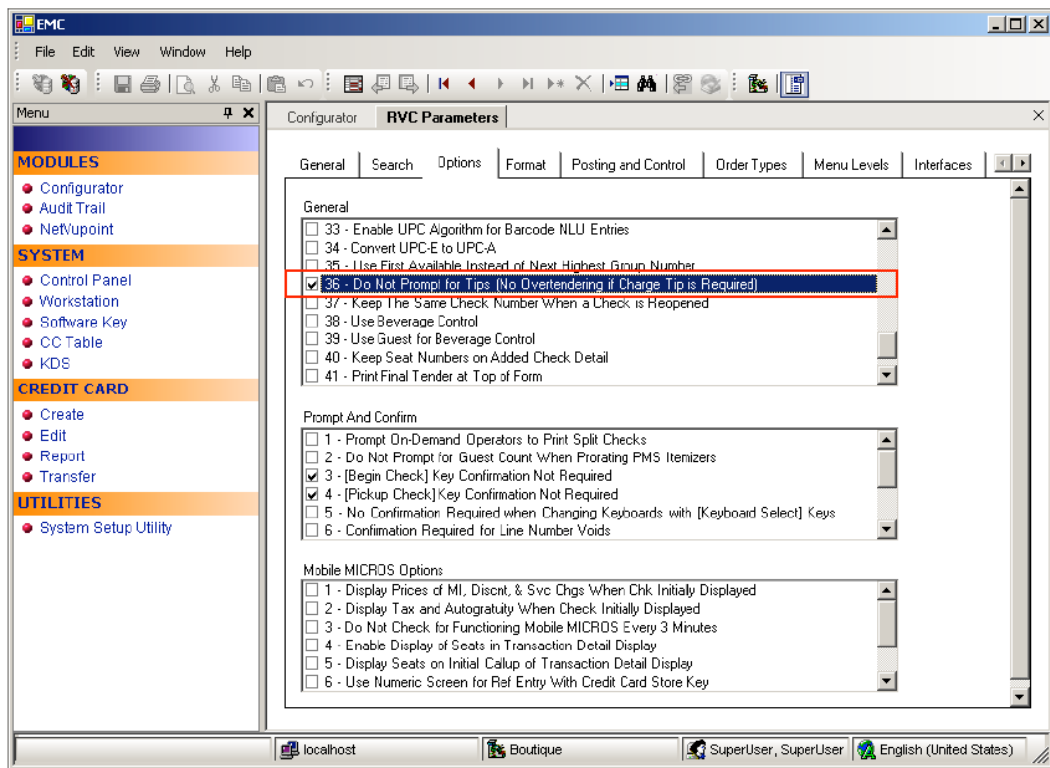


Figure 3-2 EMC RVC Parameters General Options

If using the TSR mode, do not activate this option. On the Format tab, configure and enable the following options for the TSR RVC's:

1. Define the **Number of Guest Check Information Lines** as **30**.
2. Select the check box **Skip Blank Lines When Print or Display Guest Check Info Lines**.

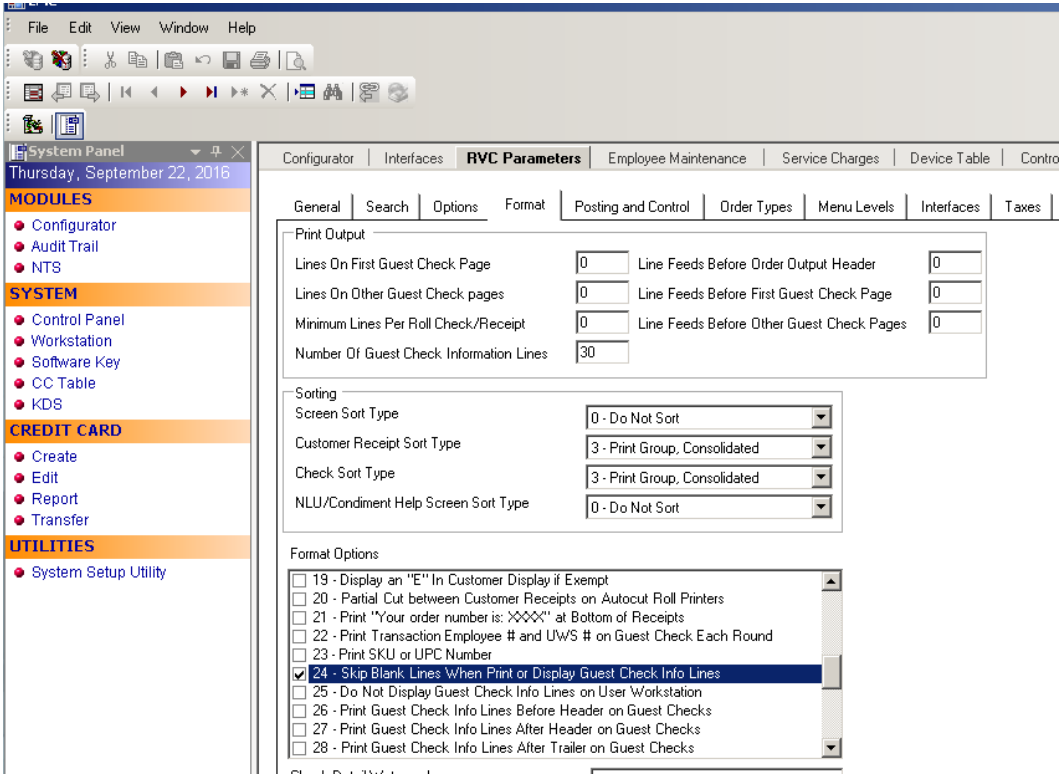


Figure 3-3 EMC RVC Parameters Format Options

Employee Configuration

1. Go to the Employee Maintenance tab, select the **Cashier** employee class.
2. Select the check box to activate the **ISL Employee Option #4** option to define the employee class that can process a refund.

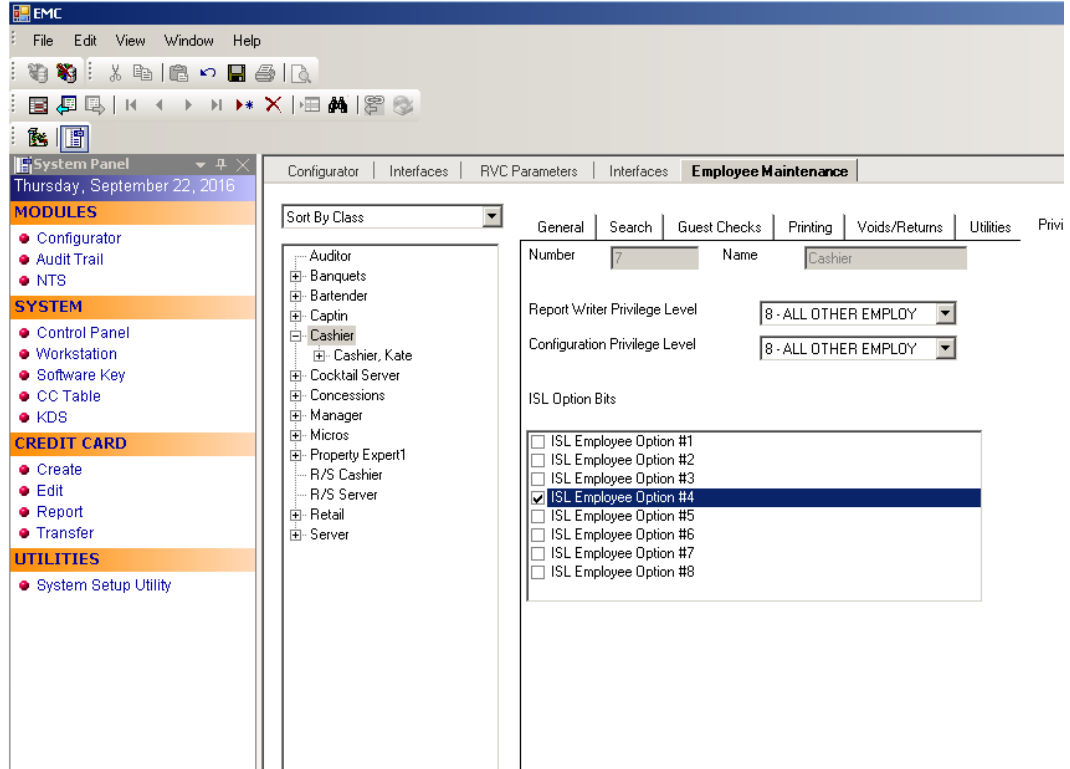


Figure 3-4 EMC Employee Maintenance - Employee Classes

3. Enable the **Authorize/Perform Closing of Checks with a Negative Balance Tenders** option.

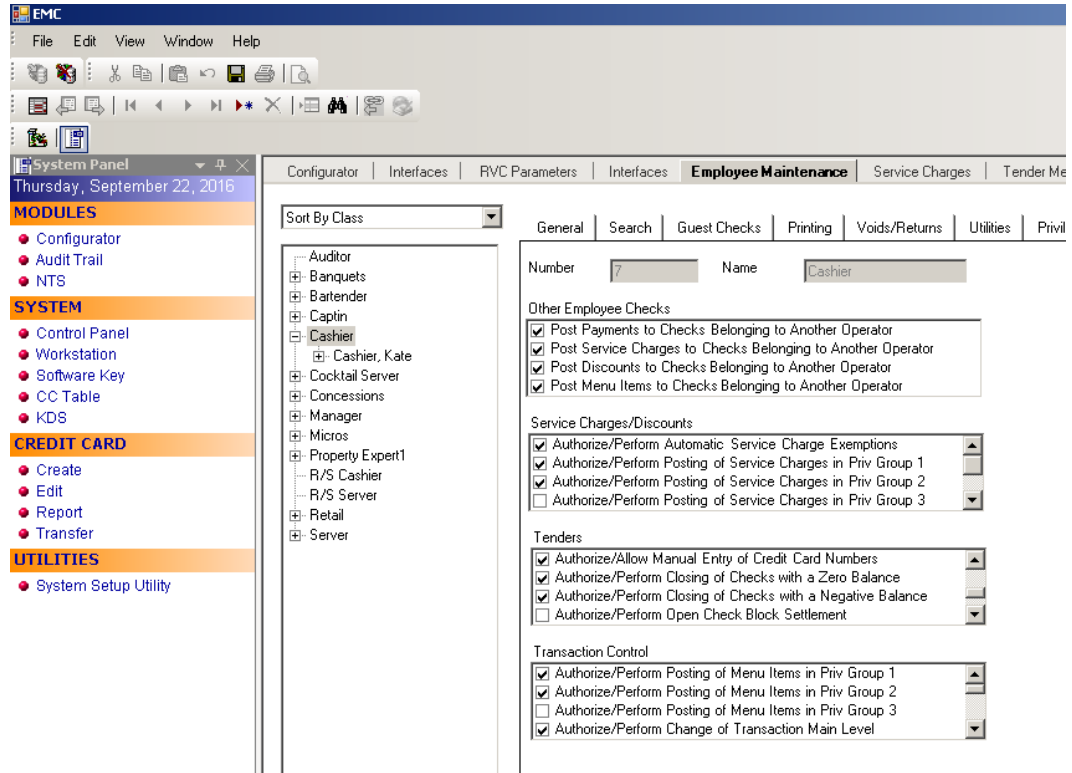


Figure 3-5 EMC Employee Maintenance Tenders Options

Service Charges

If the merchant provides a Cash Back option, then add a new Service Charge for the CashBack option. This is the same as the Open Amount Service Charge. You can skip this step if the merchant does not activate the SalesCash function.

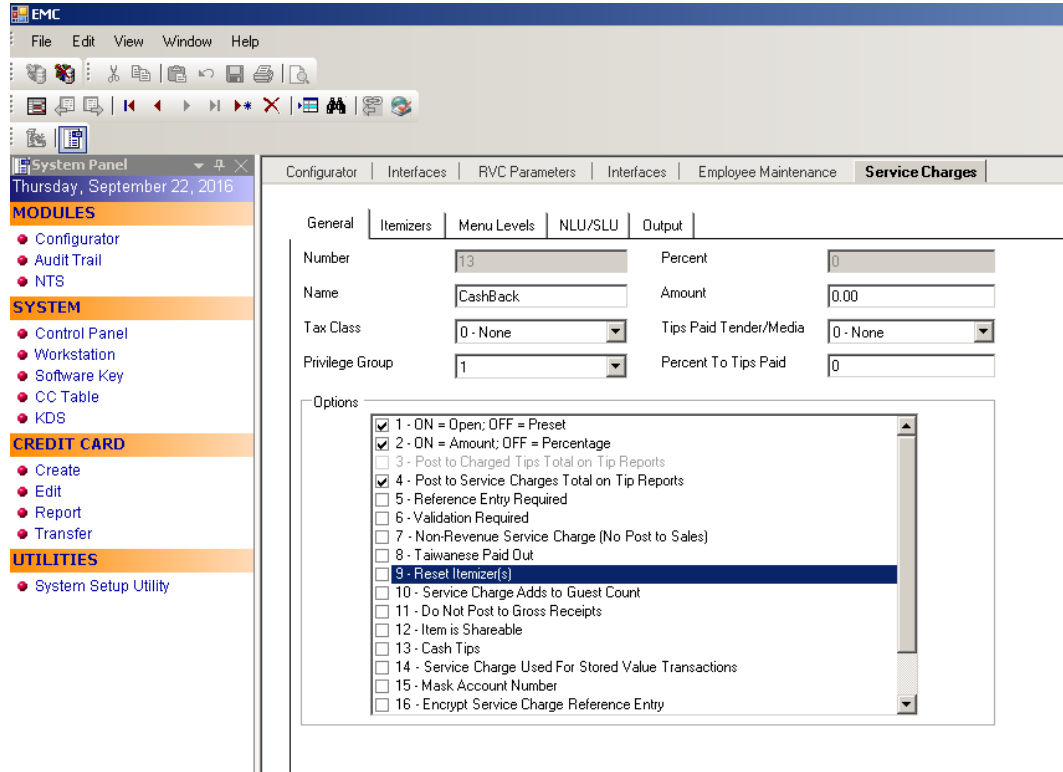


Figure 3-6 EMC Service Charges Options

Configuring Tender Media Records

Configure the following options for the credit/debit card tenders.

1. In the Enterprise Management Console, go to the **Tender Media** tab.
2. Select the **Options** tab and select the category **Interface Options**.
3. Activate the **PMS and Credit Card use 19 Digit Acct Number** option.

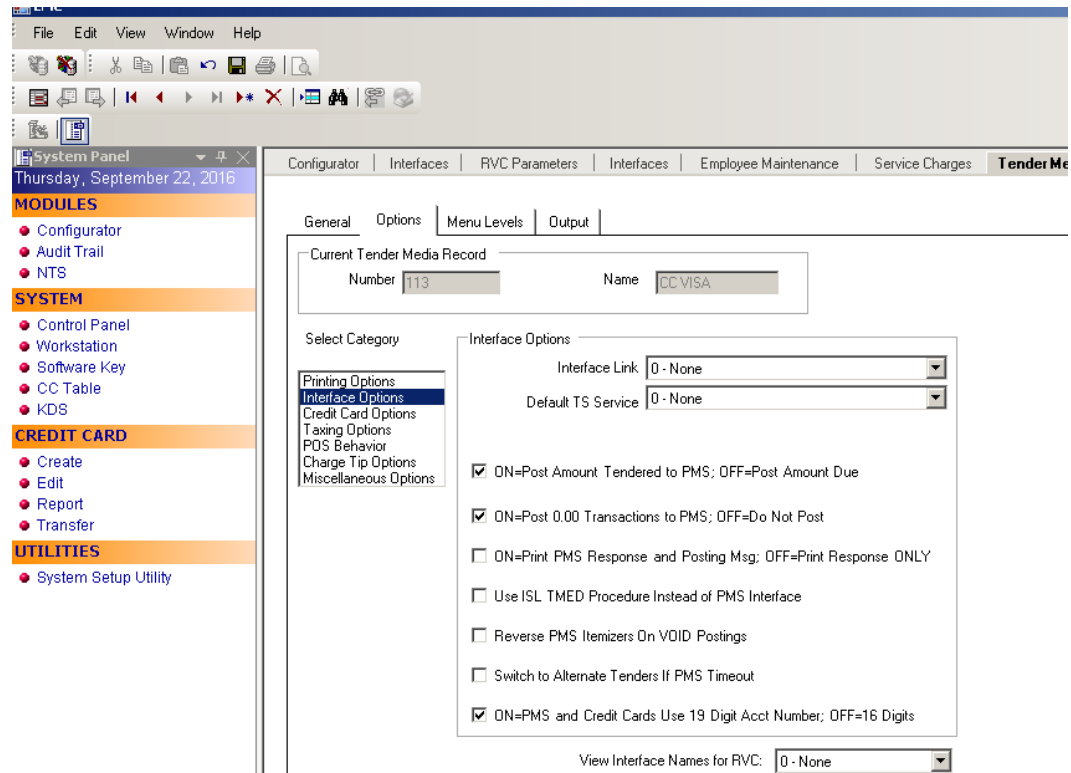


Figure 3-7 EMC Tender Media Options

To configure the credit card options:

1. Go to **Options** tab select **Credit Card Options**.
2. Deactivate all options and remove the floor limit/preambles list.
3. Enable the **No Credit Card Length Check** option.

To configure the POS options:

1. Go to the **Options** tab and select **POS Behavior**, to activate the following options:
 - Assume Paid in Full
 - Reference Entry Required
2. Deactivate the following options:
 - Mask Account Number
 - Encrypt Tender/Media Reference Entry
3. Link the tender to **Open amount Service Charge** for TSR environments.
4. Add the debit tender option the same way you would for normal credit card tenders.
5. Add the new tender **SaleCash** option the same way as a normal credit card tender. You can skip this step if the merchant does not activate the **SaleCash** function.

Note: The **SaleCash** tender is only supported when utilized in a Quick Service Restaurant (QSR) environment.

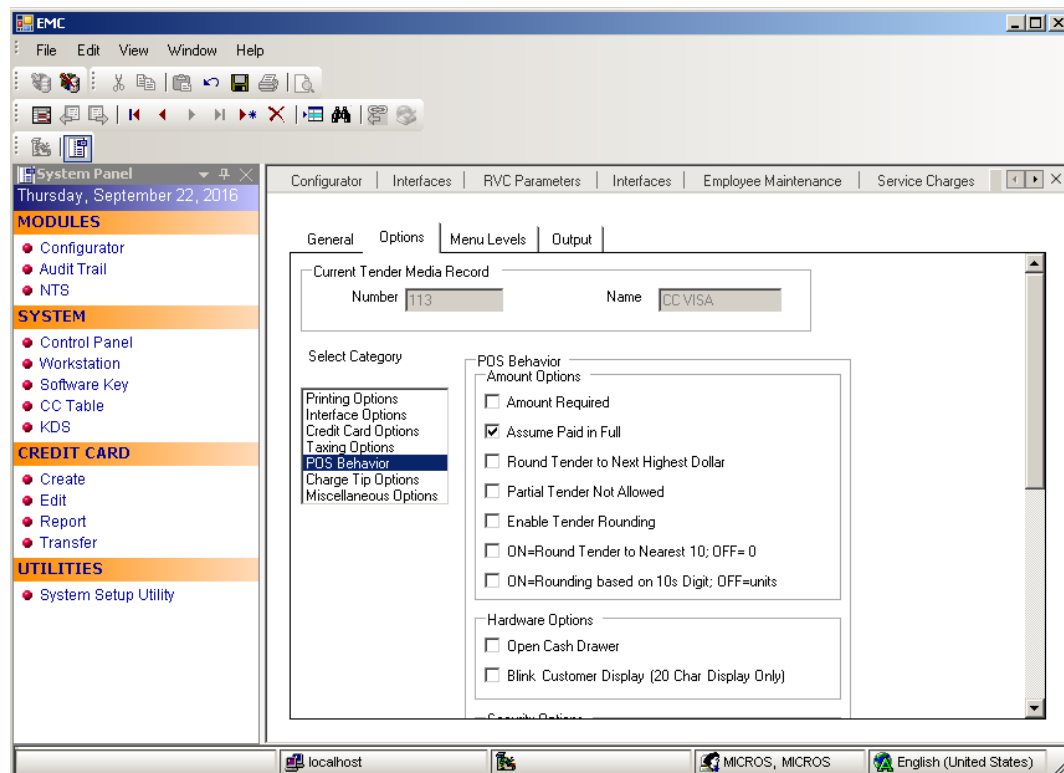


Figure 3-8 EMC Tender Media POS Behavior Options

Touch Screen Design

First, contact the Oracle Hospitality Consulting Team for confirmation, and then if required, add the following buttons to the payment screen. The key types are Functions and you can link them to the MGDH interface.

Table 3-3 Table Service Restaurant (TSR) Payment Screen

Field	Value
CC PAY	SIM INQ #2
CC REFUND	SIM INQ #4
CC AUTH	SIM INQ #8
CC FINAL	SIM INQ #9
TAB AUTH	SIM INQ #12
BALANCE INQUIRY	SIM INQ #14
CC REPRINT	SIM INQ #7
CC REPOST	SIM INQ #16
MANUAL AUTH	SIM INQ #15
REFUND MANUAL	SIM INQ #11
AUTH CNP	SIM INQ #20

Table 3-4 Quick Service Restaurant (QSR) Payment Screen

Field	Value
QSR SALE	SIM INQ #1
SALE CASH	SIM INQ #5
CC REFUND	SIM INQ #4
BALANCE INQUIRY	SIM INQ #14
CC REPRINT	SIM INQ #7
CC REPOST	SIM INQ #16
REFUND MANUAL	SIM INQ #11
SALE CNP	SIM INQ #6

The OPI shares the VOID touchscreen key with the 9700 POS. Using the VOID key you can:

- Void the transaction
- Add Tips (for TSR only)

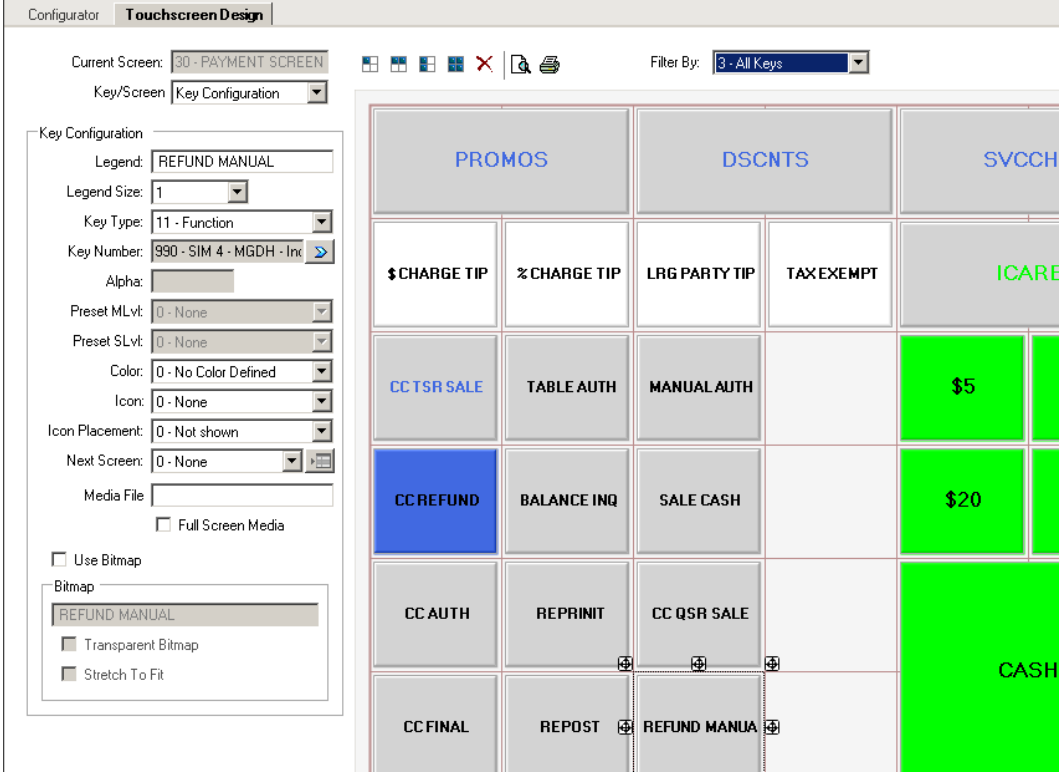


Figure 3-9 EMC Touchscreen Design Module

4 Installing the MGDH Driver

Installing MGDH on the 9700 Server

1. Double-click the MGDH installer to start the installation.
2. Click **Next**.
3. Browse to select the location to install MGDH.

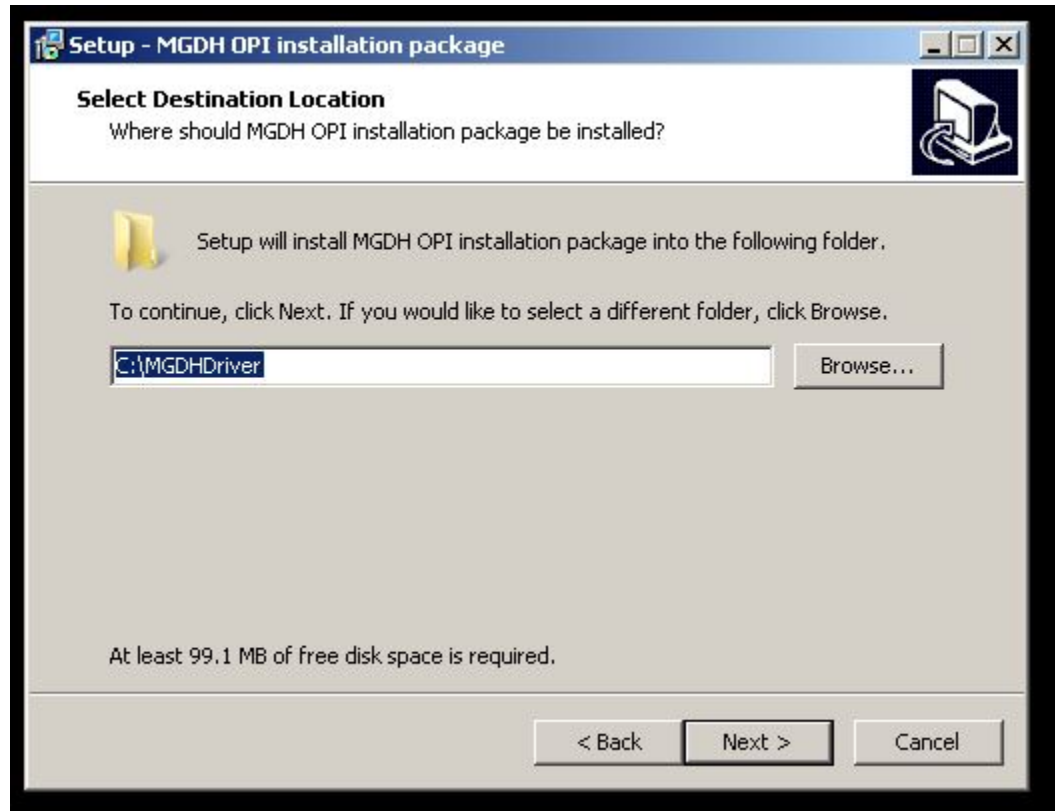


Figure 4-1 MGDH OPI Installation Package

4. Click **Next**.
5. Enter your database information.

Table 4-1 MGDH Database Information Settings

Field	Value
Database Type	MSSQL
DB Server	localhost
Database Name	mcrspos

Figure 4-2 MGDH POS Config Files Setup

6. Click **Next**.

7. Select the **Currency** and **Single MerchantID** or **Multiple MerchantID**.
8. Enter the **MID number**, in this case enter the Single MerchantID and click **Next**.
If needed, you can confirm the MerchantID setup configuration with the Oracle Hospitality Consulting Team.

The screenshot shows a window titled "POS Config files setup Wizard" with a sub-header "RVC Options in OPI.inc". The window contains the following configuration options:

- Currency :** A dropdown menu with "USD" selected.
- ALL RVC Mode :** A dropdown menu with "QSR and TSR mixed. No_QSR = false, No_TSR = false." selected.
- ALL RVC Merchant ID :** Two radio buttons: "Single MerchantID" (selected) and "Multiple MerchantID".
- Merchant ID :** A text input field containing "9700000001".

At the bottom right, there are two buttons: "Next >" and "Cancel".

Figure 4-3 MGDH POS Config RVC Currency Setup

9. Select the RVC mode for the RVCs under the property. TSR is for Table Service and QSR is for Quick Service, which enables the No Tip option and click **Next**.

Select	RVC#	RVC Name	Device Merchant ID	Mode	Header
<input checked="" type="checkbox"/>	1	Beaches Cafe	9700000001	TSR	Edit
<input checked="" type="checkbox"/>	2	Room Service	9700000001	TSR	Edit
<input checked="" type="checkbox"/>	3	Banquets	9700000001	TSR	Edit
<input checked="" type="checkbox"/>	4	Palm Bistro	9700000001	TSR	Edit
<input checked="" type="checkbox"/>	5	Boutique	9700000001	TSR	Edit

Buttons: Select All, Unselect All, < Back, Next >, Cancel

Figure 4-4 MGDH POS Config setup - RVC Map

10. **Header** and **Trailer** information is configured by the partner and the partner who responds with all of the print data, therefore, you do not need to configure the following information.

11. Click **OK**.

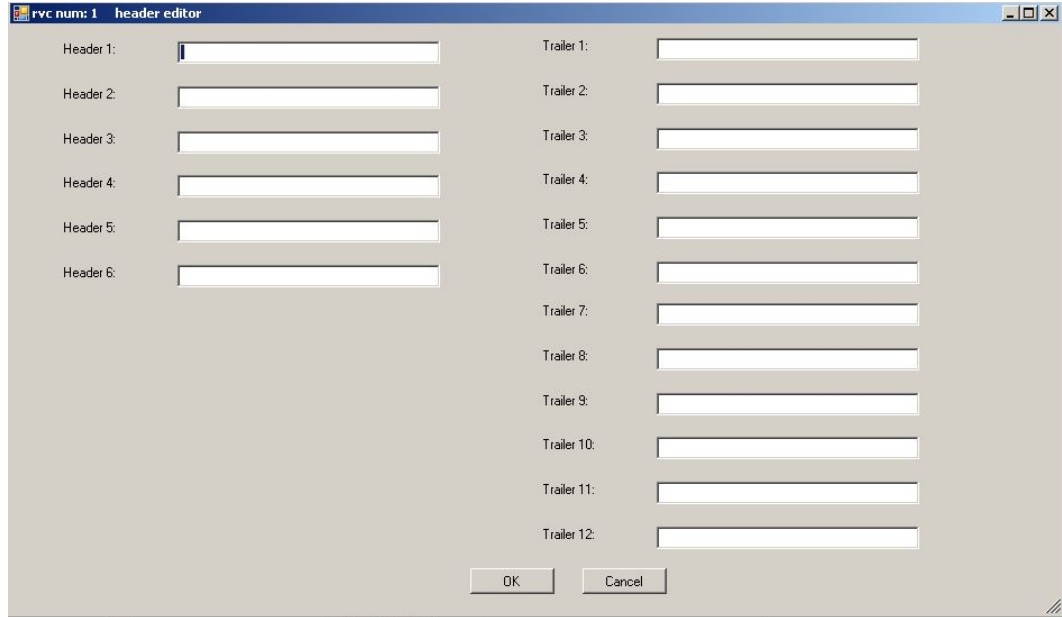


Figure 4-5 MGDH RVC Header Editor

12. You can match the tender from the drop-down list for the card types and enter the CashBack service charge number for **Cashback_svc**. If the tender is not used, skip this step.
13. Click **Next**.



Figure 4-6 MGDH Tender Map

14. Select the check box to enable the required options. You can double-click the **Trans Option Description** to access detailed descriptions for the transaction options.
15. Click **Next**.

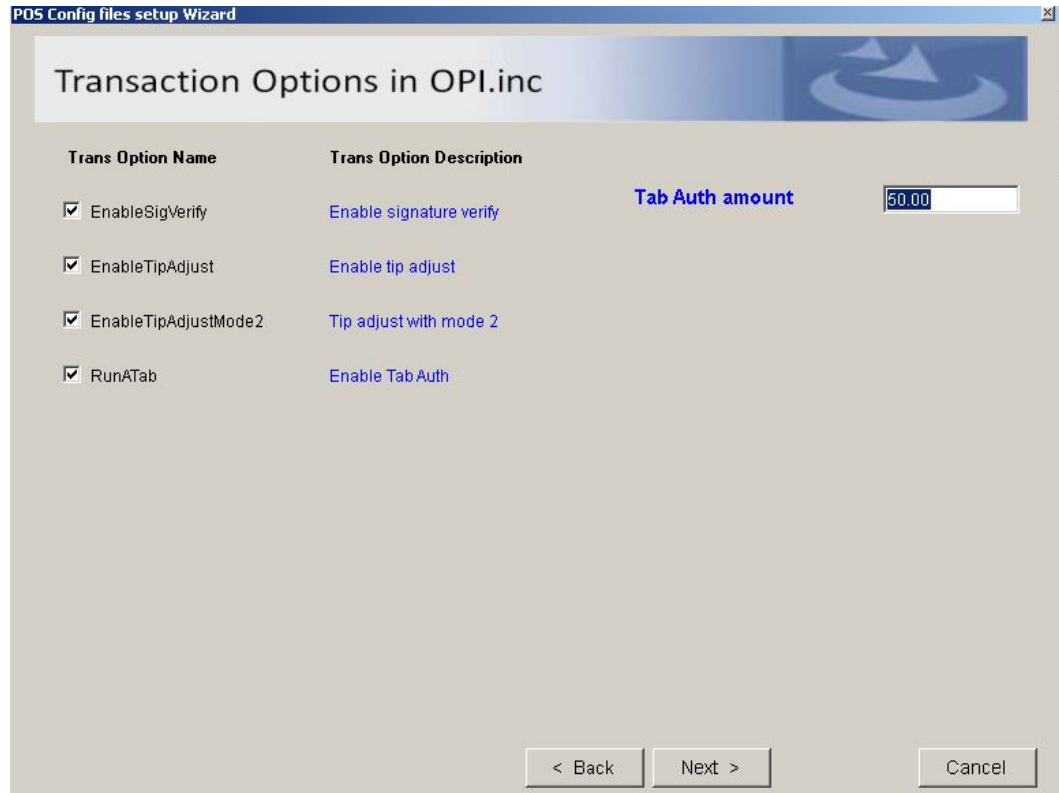


Figure 4-7 MGDH Transaction Options

16. Select the options required for the merchant.
17. Click **Next**.

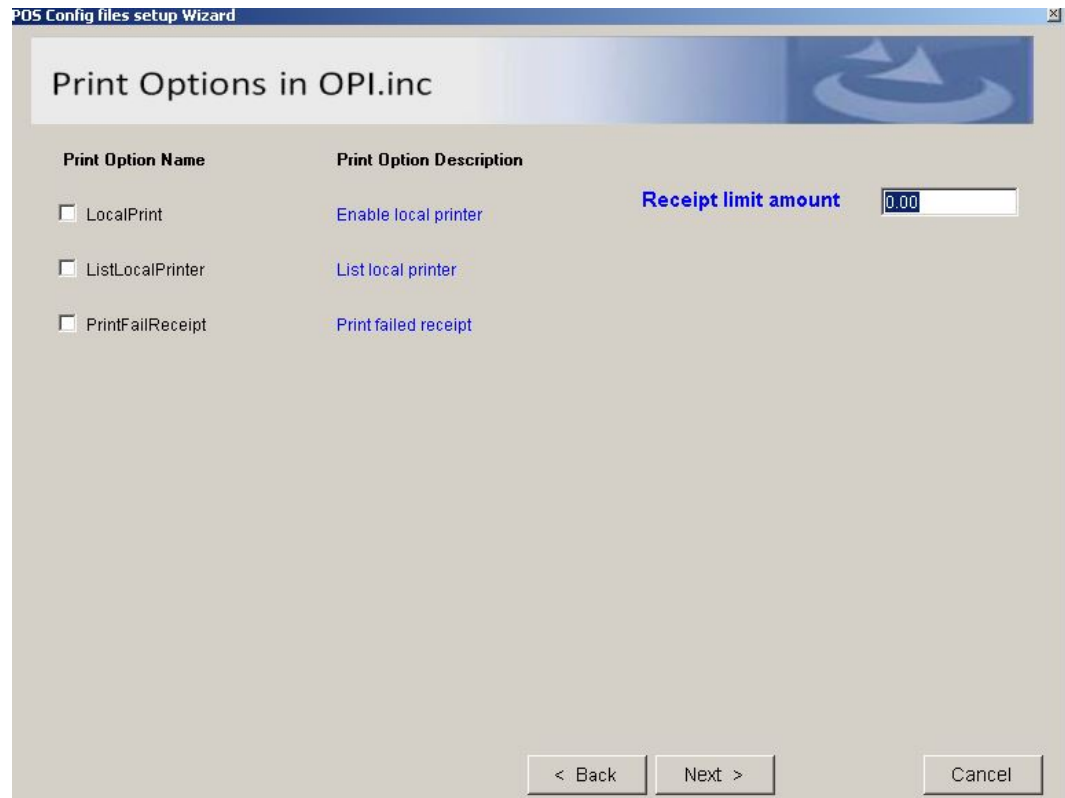


Figure 4-8 MGDH Print Options

18. Enter the following information:

Table 4-2 MGDH Server Setup Options

Option	Value
Host1 HTTP	OPI Server IP address, for example: https://127.0.0.1
Host1 Port	OPI port, you can use the default 5098
TIMEOUT	MGDH timeout, you can use the default 60 seconds

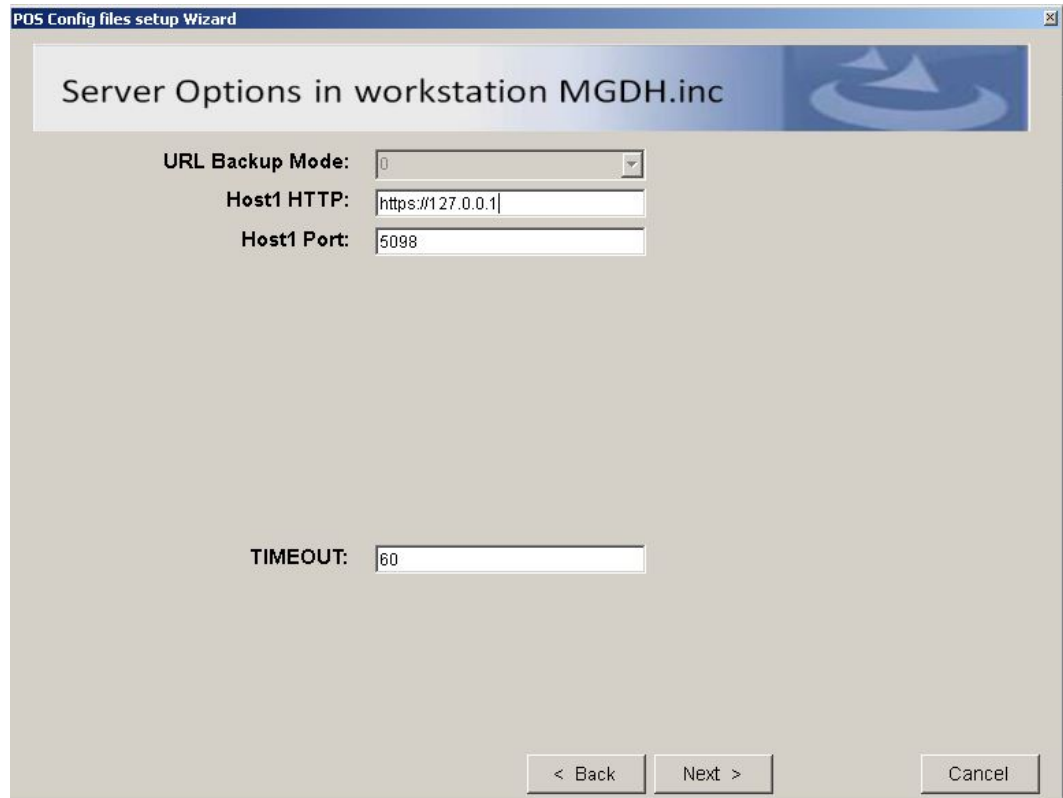


Figure 4-9 MGDH Server Options

19. Click **Next** and enter the following information for the POSEOD:

Table 4-3 MGDH POSEOD Setup Options

Option	Value
Server	OPI Server, same with last step
Server port	OPI port, same with last step
TIMEOUT(POSEOD)	EOD TIMEOUT, you can use the default value 80
Device Merchant ID	The MID or MID's required for the RVCs
Multiple MID	There must be a " " between the MIDs

POSEOD Options

Server:

Server Port:

TIMEOUT (POSEOD):

Device Merchant ID in POSEOD.inc:

Notice: please add them if there are multiple merchant IDs.
For example, 97000001|97000002|97000003

< Back Next > Cancel

Figure 4-10 MGDH POSEOD Setup Options

20. Click **Next**.

21. Click **OK**.

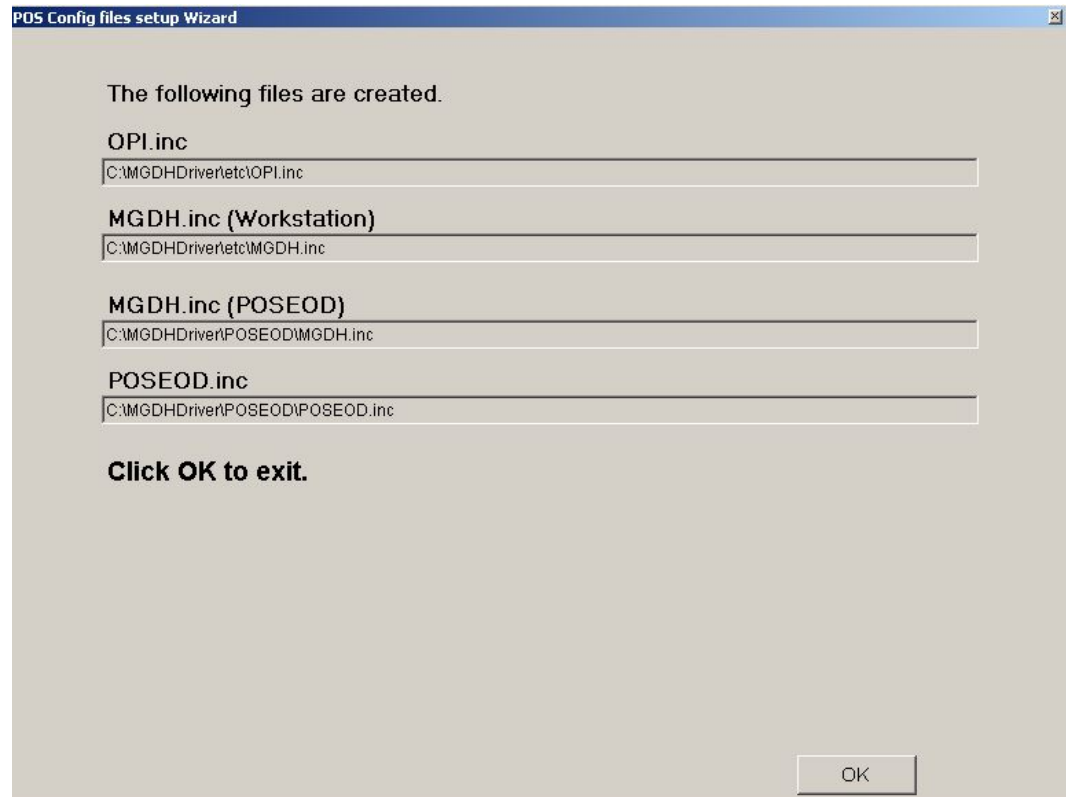


Figure 4-11 MGDH File Creation Confirmation Screen

22. Click **Install**.

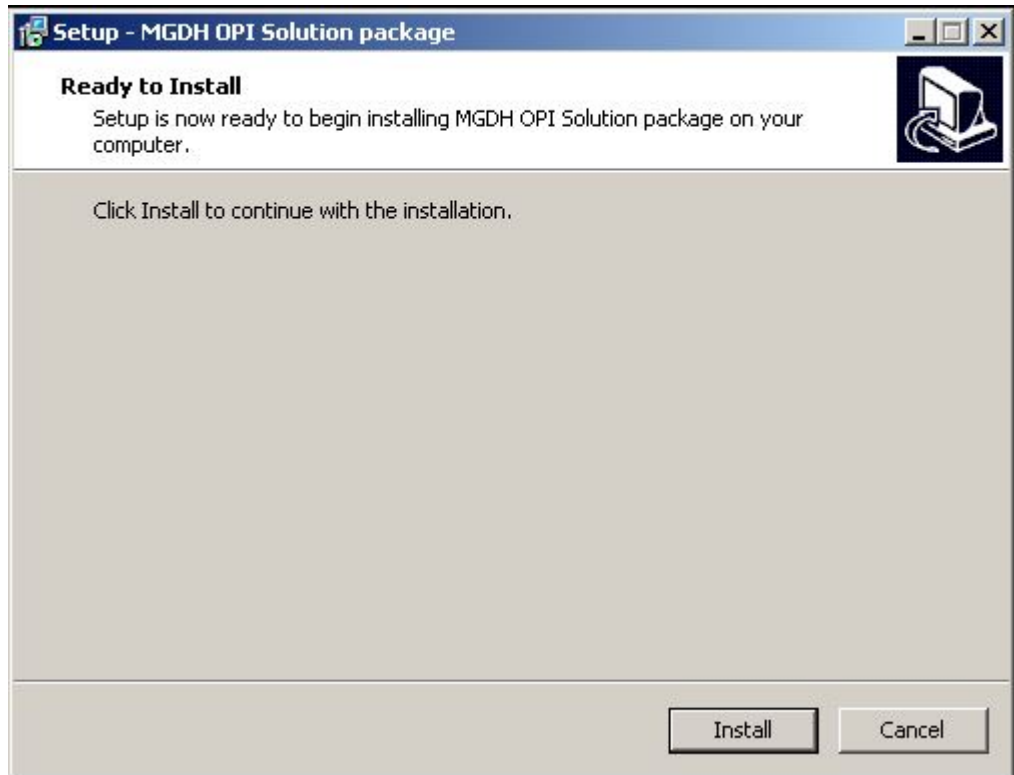


Figure 4-3 MGDH OPI Installation Screen

23. If you need to edit the files configured during a previous installation, then you can select the available **Edit** options to edit the files and click **Next**.

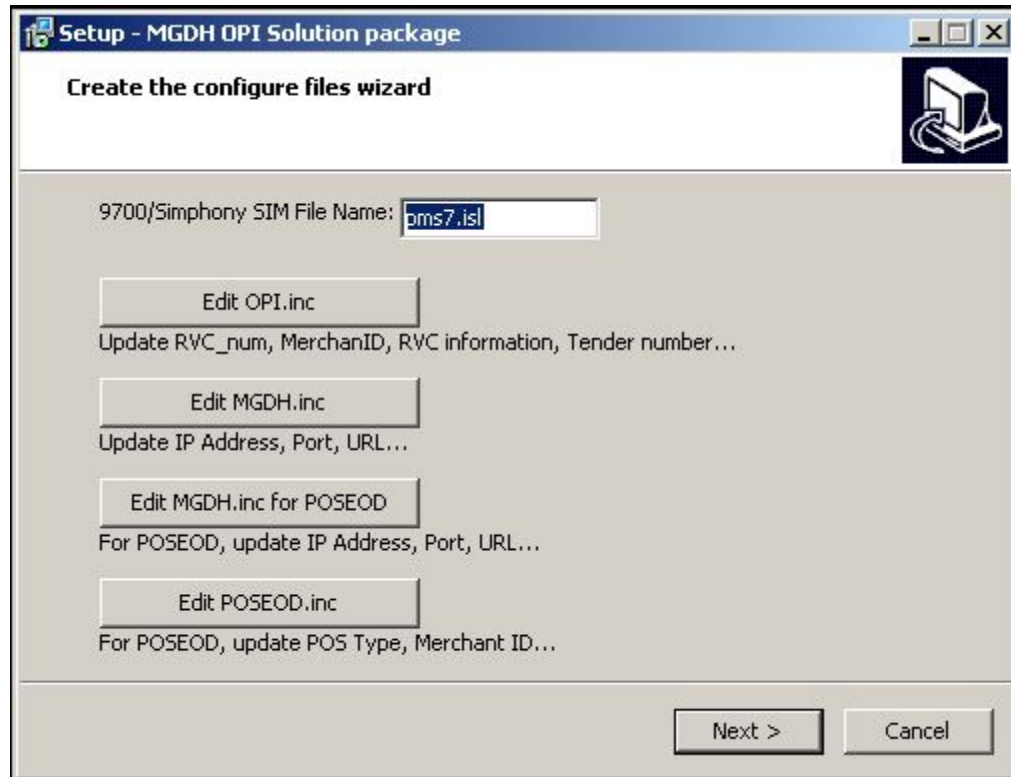


Figure 4-13 MGDH OPI Edit Files Screen

24. Click **Next**.

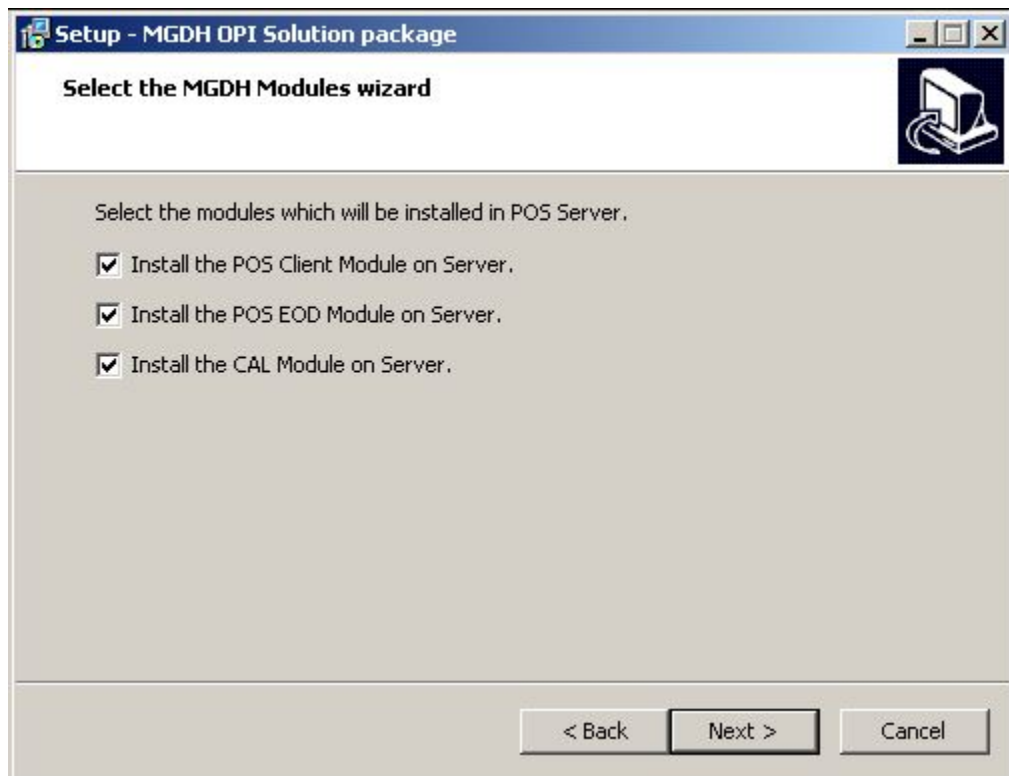


Figure 4-4 MGDH Modules Installation Screen

25. A restart of the computer is not required.
26. Click **Finish**.

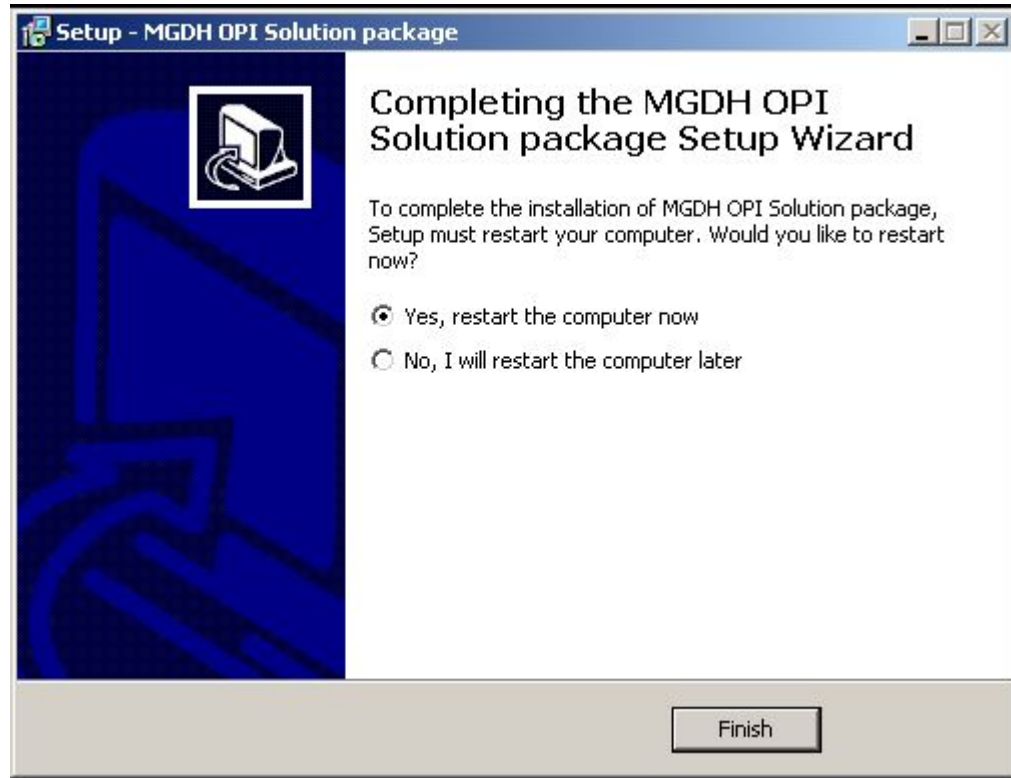


Figure 4-5 MGDH OPI Installation Completion Prompt

Point-of-Sale (POS) End-of-Day (EOD)

You can use the Microsoft Windows Task Scheduler to run the OPI POSEOD using the following configuration details.

Table 4-4 Microsoft Windows Task Scheduler Settings

Temporary	Table
Name	OPI POSEOD
Description	Generates the OPI transaction report
Trigger	Daily
Action	Start a program
Program/script	Browse to find the <code>POSEOD.exe</code> in MGDHDriver directory
Add arguments (optional)	The upper level of the <code>POSEOD.exe</code> path
Start in (optional)	The upper level of the <code>POSEOD.exe</code> path

For more information on how to setup the Microsoft Windows Task scheduler visit the Microsoft website at: <http://www.microsoft.com>

5 Installing the OPI

OPI Installation Steps

Complete the following steps to install OPI.

1. Double-click the OPI installer desktop icon.



Table 5-1 OPI Installer Desktop Icon

2. Click **Next**.

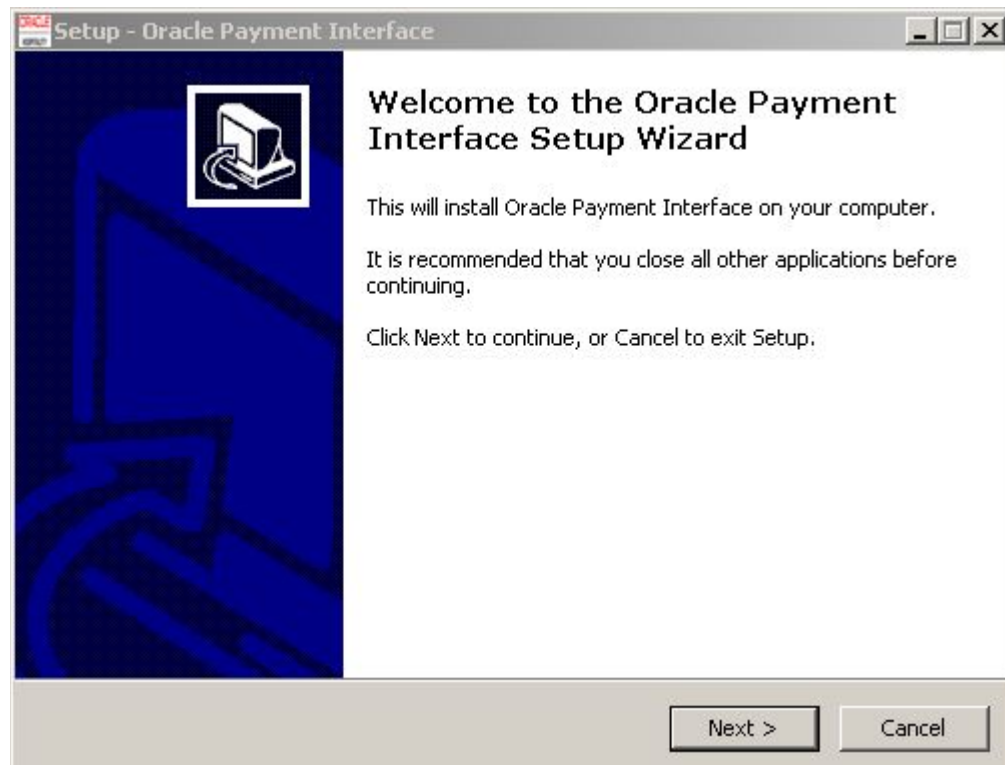


Figure 5-1 OPI Installation Wizard

-
3. Verifying your computer and validating the required software takes around 10 seconds.

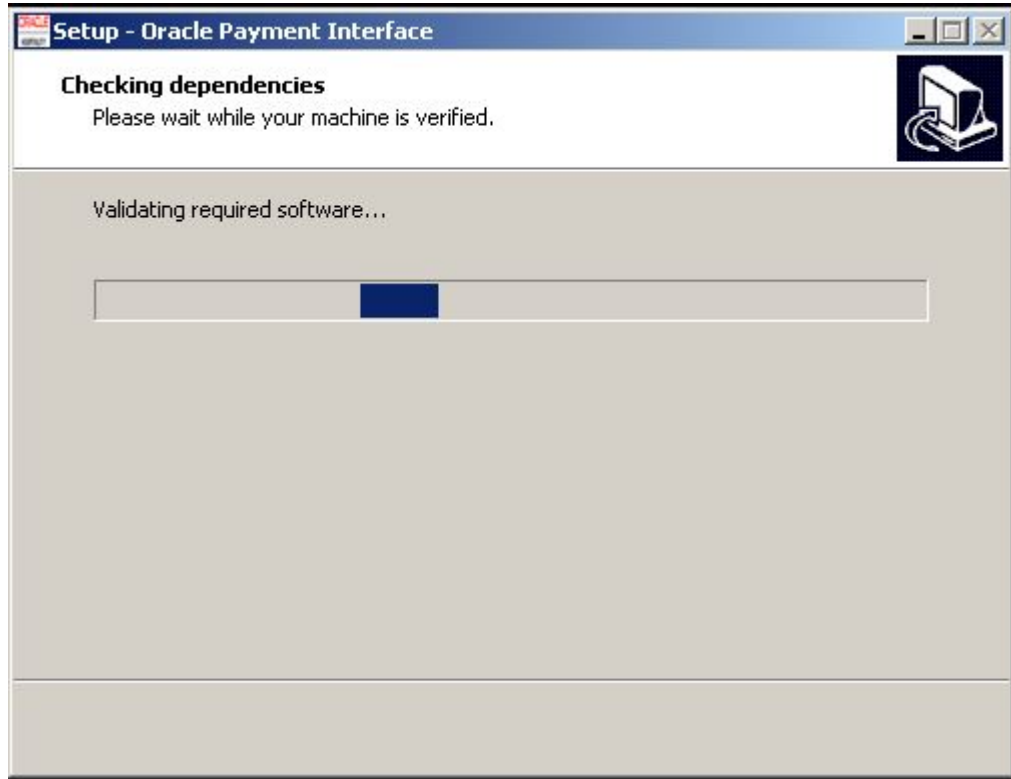


Figure 5-2 OPI Setup Validation Screen

4. If the target computer doesn't have MySQL installed, then the OPI installs the MySQL database. If MySQL is already installed, then the OPI uses the existing MySQL database and you must enter your MySQL logon credentials.
5. Click **Next**.

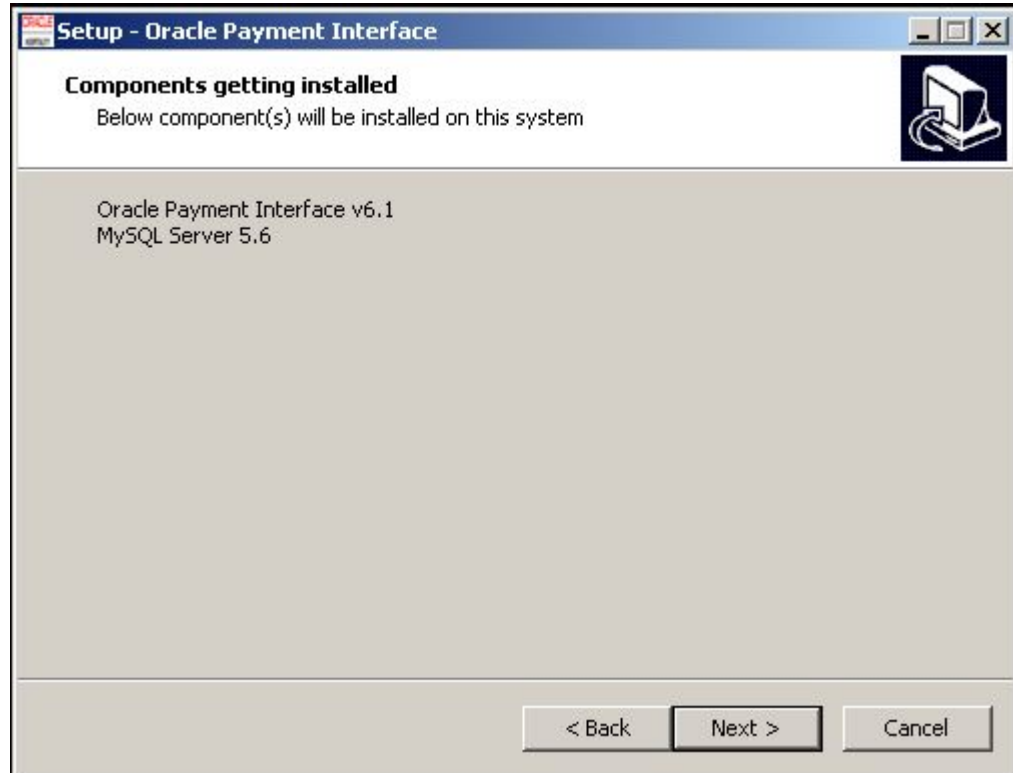


Figure 5-3 OPI Components Installation Screen

6. Setup a MySQL password to use for creating the Database Schema.

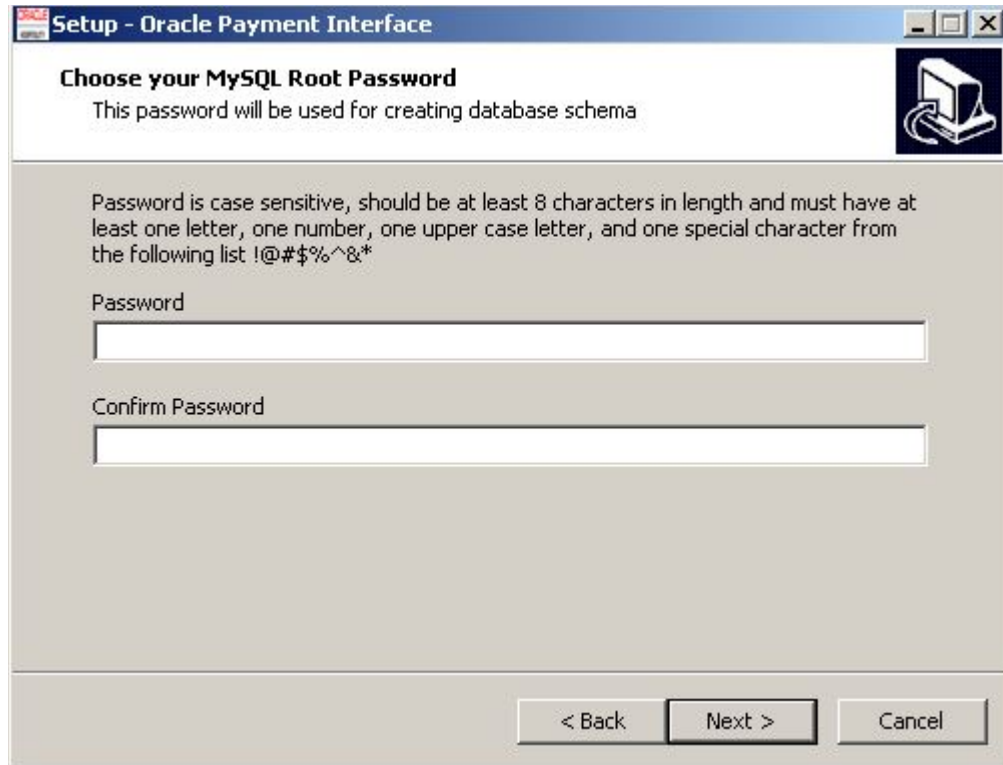


Figure 5-4 OPI MySQL Root Password Setup

7. Click **Next** to continue and enter a **Username** and **Password** to create a database user for the OPI and click **Next**.

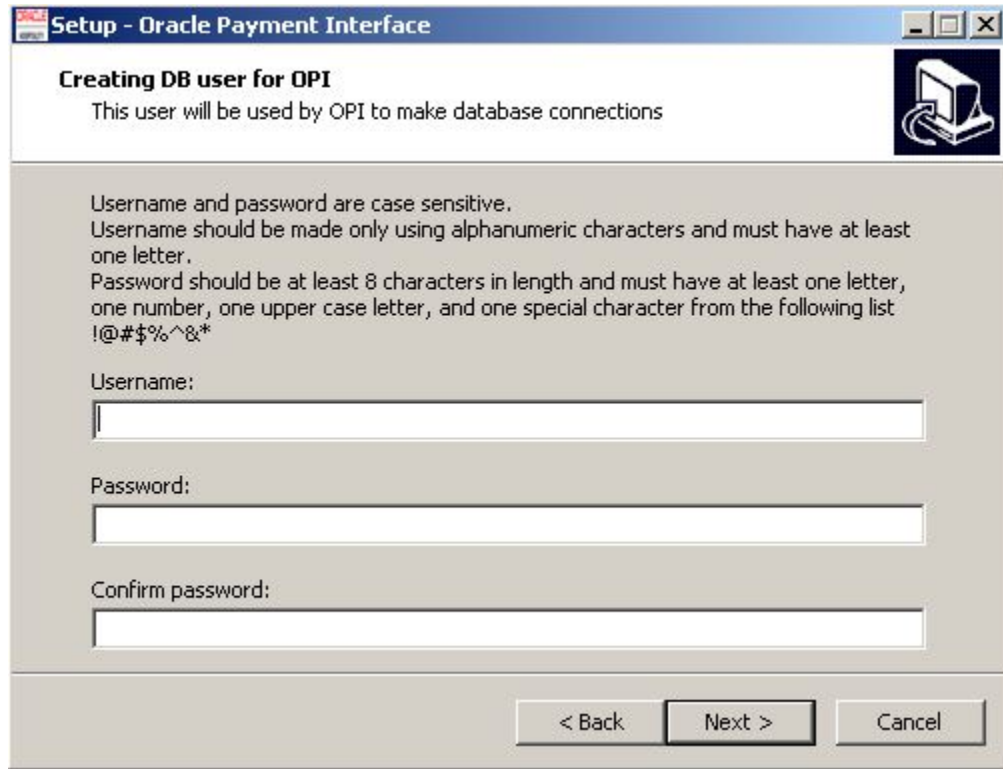


Figure 5-5 OPI Creating a DB User

8. Select **POS**, **MGDH**, and then click **Next**.

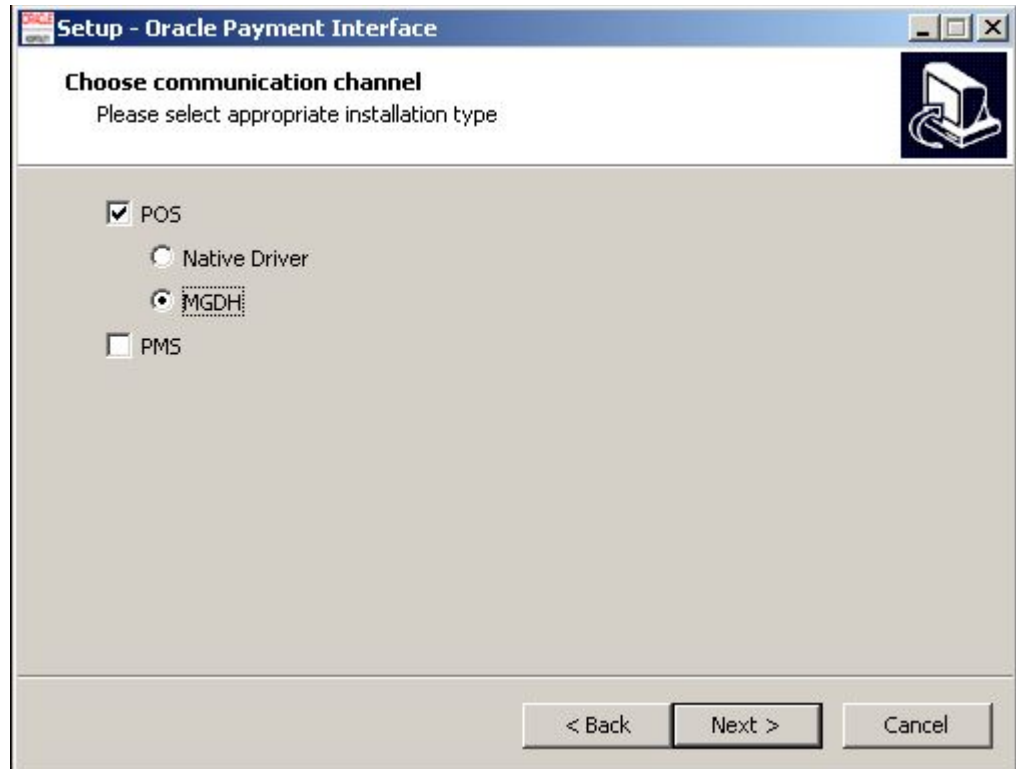


Figure 5-6 OPI Communication Channel Selection Screen

9. Enter and confirm your password to secure a certificate for the OPI to use during MGDH communication, and click **Next**.

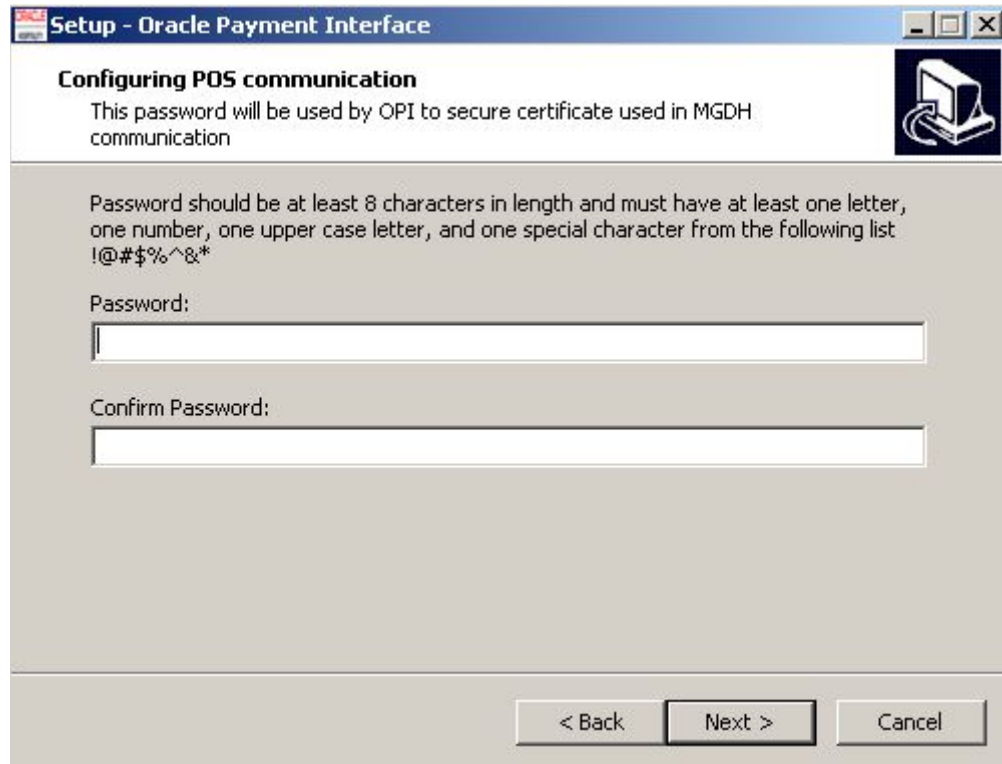


Figure 5-7 OPI Configuring POS Communication Screen

10. Enter the date and time you want to schedule a weekly restart of the OPI Service.

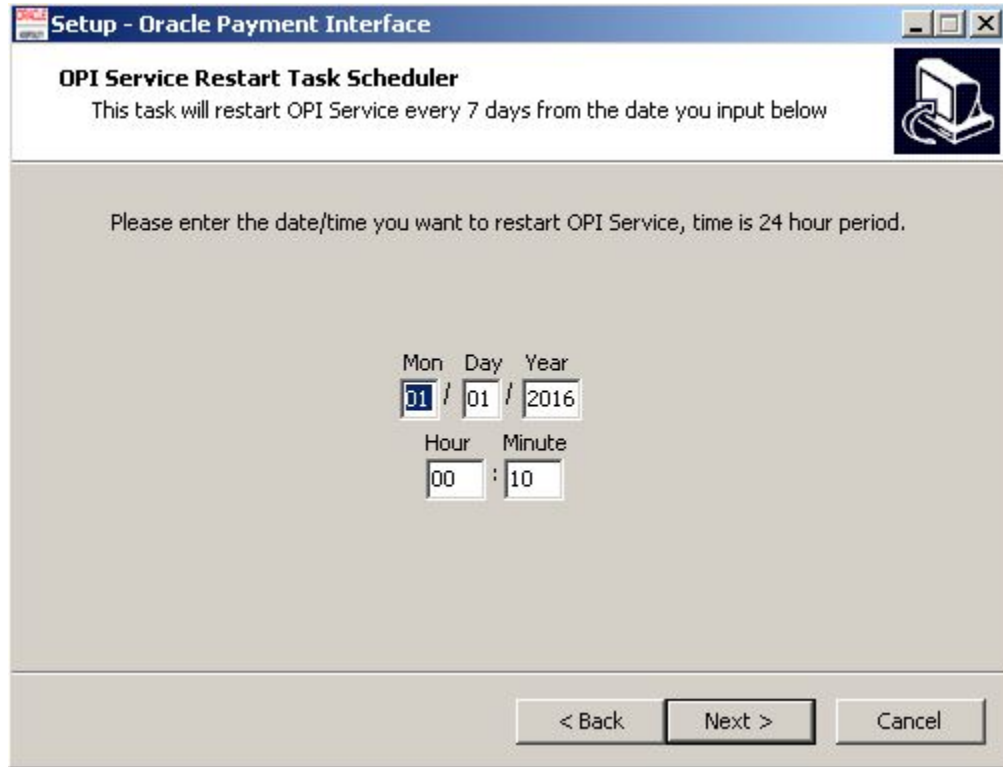


Figure 5-8 OPI Service Restart Task Scheduler

11. Select the destination drive location where to install the OPI and click **Next**.

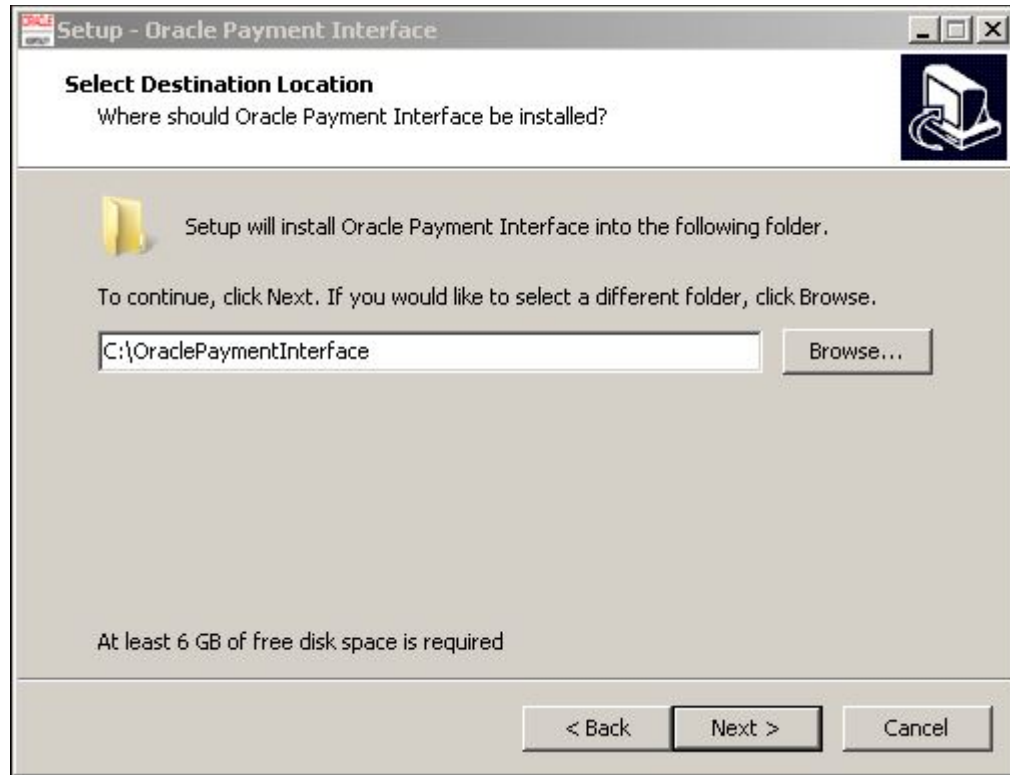


Figure 5-9 OPI Select Destination Location Screen

12. Click Next.

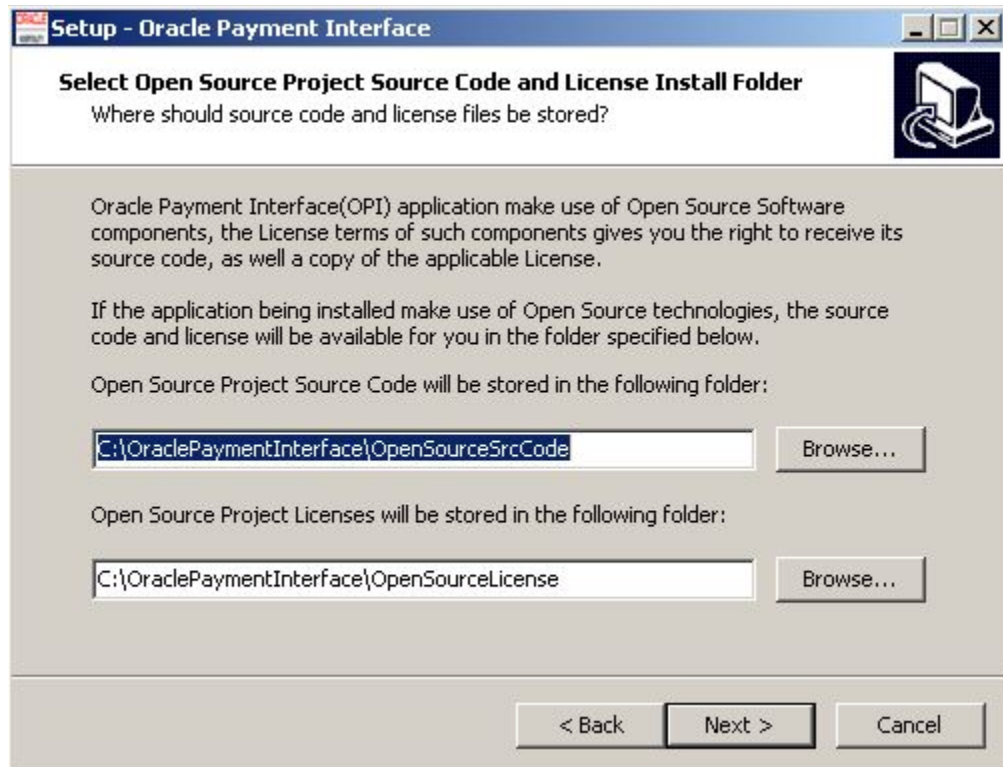


Figure 5-10 OPI Open Source Project Code and License Storage Locations

13. Click Next.

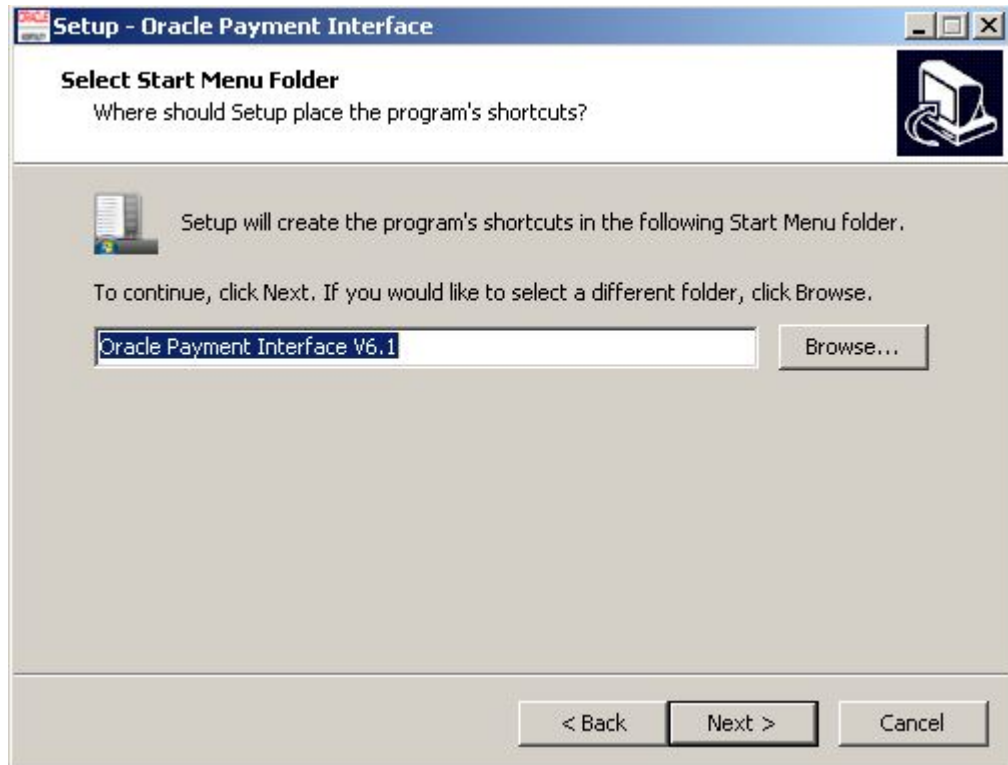


Figure 5-11 OPI Select Start Menu Folder

14. Verify your previous installation settings, and if correct, click **Install**.

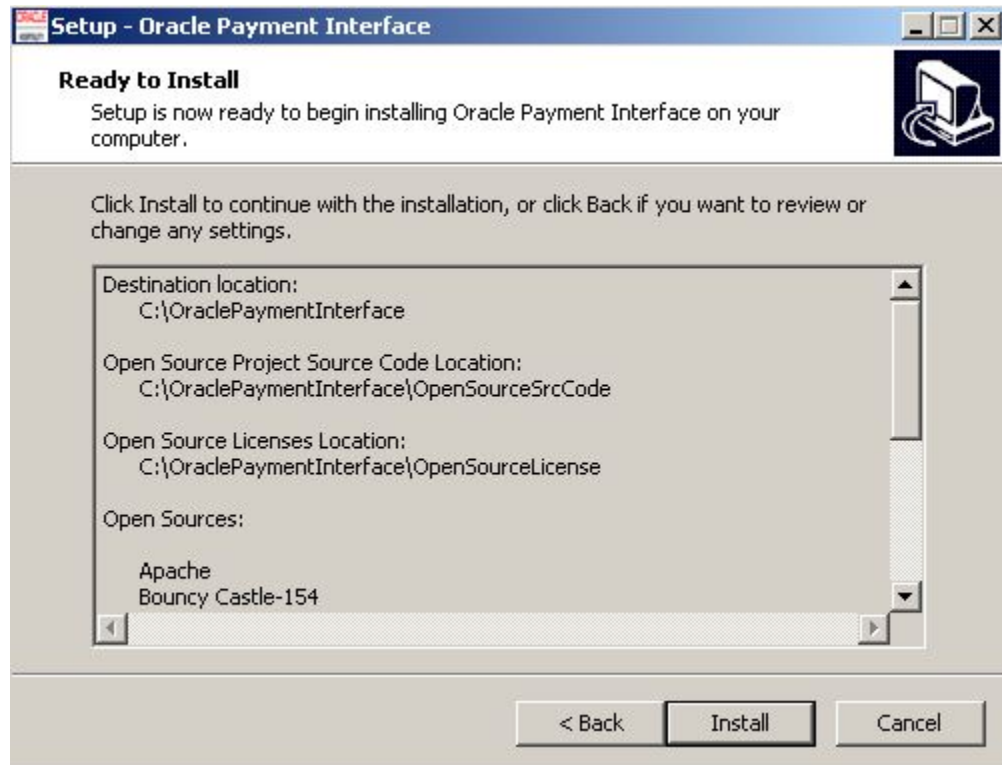


Figure 5-12 OPI Installation Screen

-
15. The installation of the OPI and MySQL starts and may take several minutes. Upon completion, you can now configure the OPI.

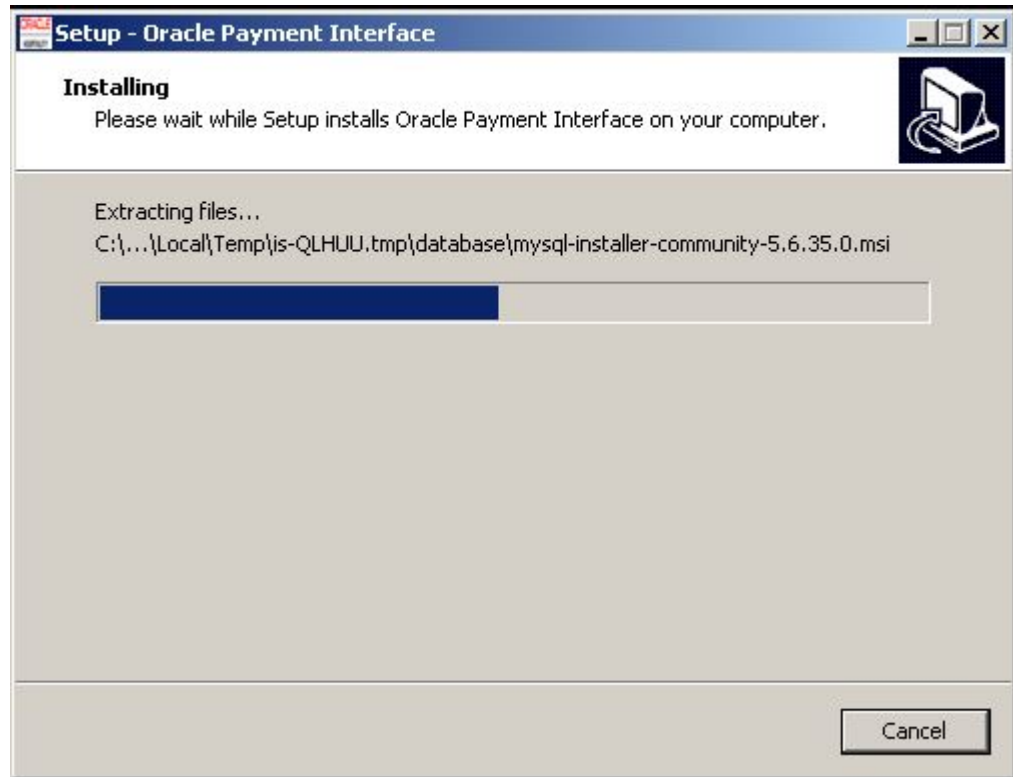


Figure 5-13 OPI Installation Progress Screen

Configuring the OPI

Complete the following steps to configure the OPI:

1. Log in using your Microsoft Windows System Administrator credentials.

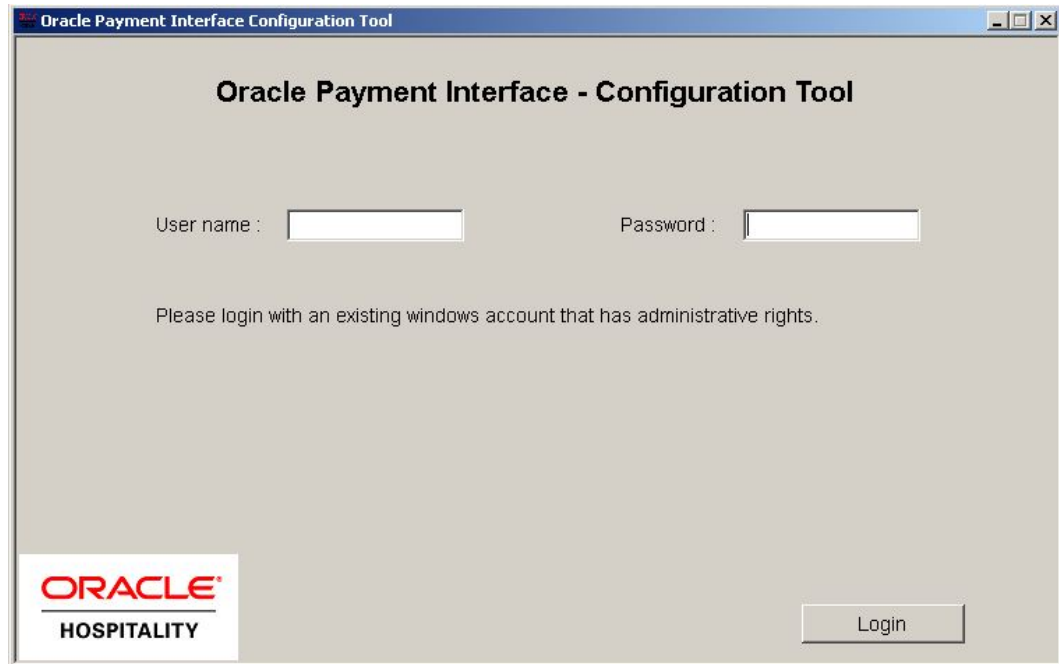


Figure 5-14 OPI Configuration Tool - Terminal Mode

2. Click Next.

3. Enter the following information to configure the OPI Terminal mode:

Table 5-2 OPI Terminal Mode Configuration Settings

Field	Value
POS Interface	Enable
OPI mode	Terminal
Port	Terminal port

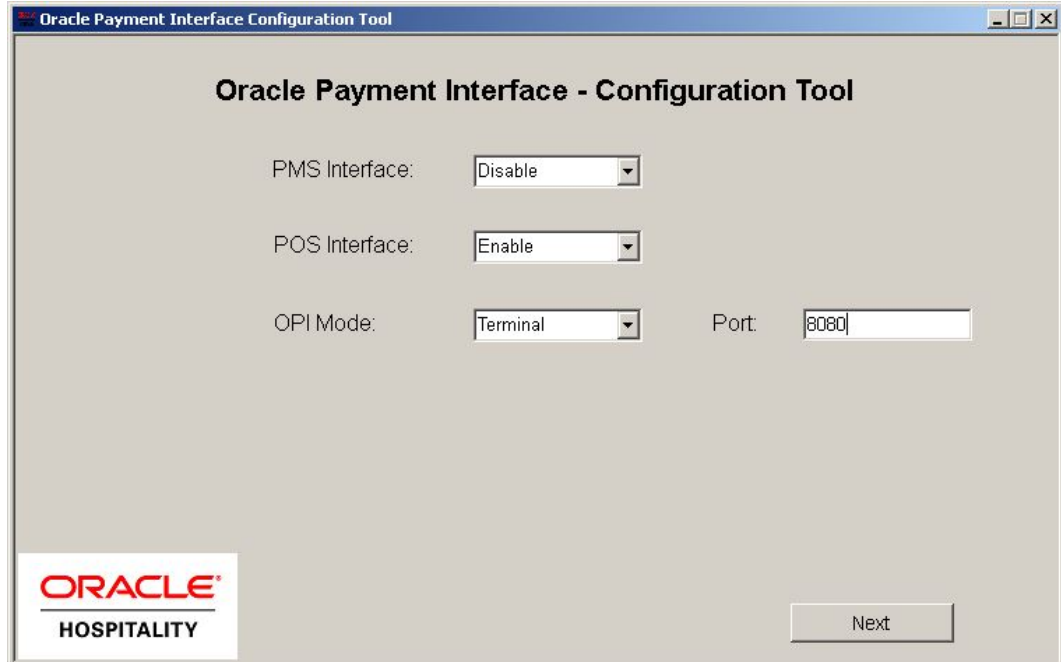


Table 5-3 OPI Terminal Mode Settings

- Click **Next**, and configure the OPI Middleware mode by entering the following information:

Table 5-4 OPI Middleware Mode Configuration Settings

Field	Value
POS Interface	Enable
OPI mode	Middleware
PrimaryHost	Confirm with Oracle Consulting Team
BackupHost	Confirm with Oracle Consulting Team
Proxy Address	Proxy Address if it is used
Proxy Port	Proxy Port

Oracle Payment Interface - Configuration Tool

PMS Interface:

POS Interface:

OPI Mode:

Primary Host:

Backup Host:

Proxy Address:

Proxy Port:

ORACLE
HOSPITALITY

Next

Table 5-5 OPI Middleware Mode Settings

5. Select **POS Configuration**.

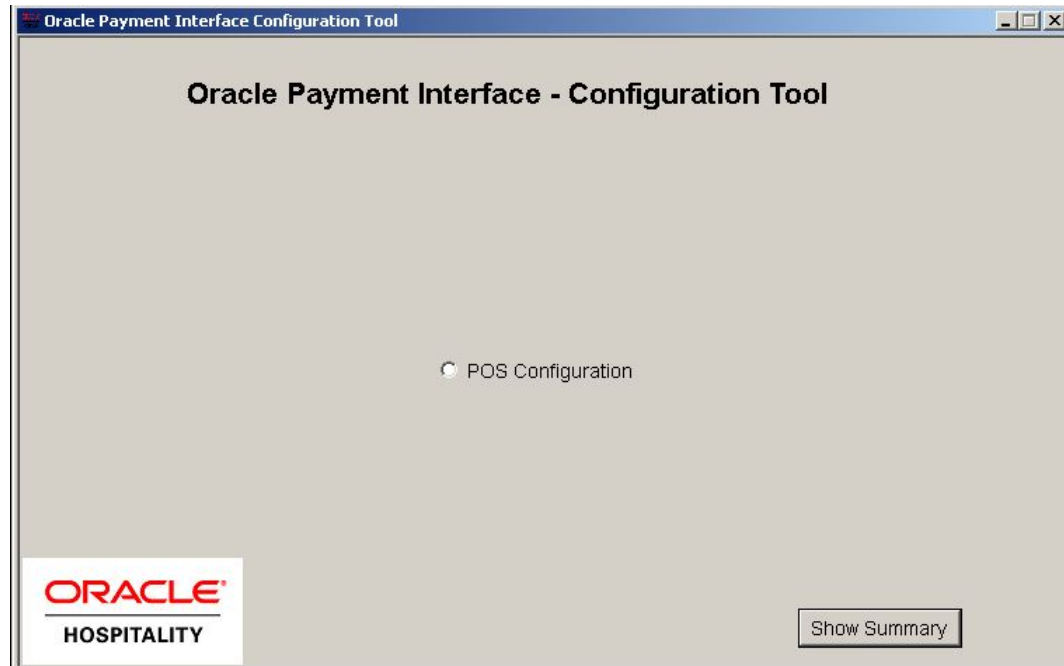


Figure 5-15 OPI POS Configuration

6. Select the **Add New Property** button.

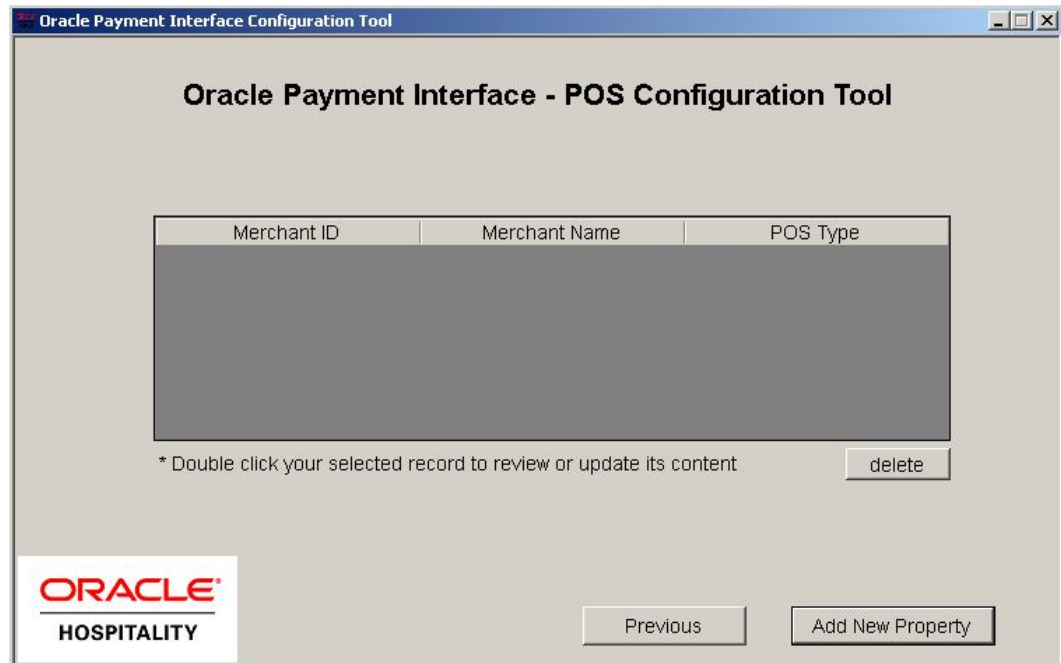


Figure 5-16 OPI Add New Property Screen

7. Configure the merchant details using the following information:

Table 5-6 OPI Merchant Details Configuration

Temporary	Table
POS Type	9700
Port	5098 as default
Merchant ID	MID (same as the MGDH Merchant ID)
Merchant Type	Restaurant or Retail
PosCrossMerchant	Disable
PosCrossCheck	Disable
Merchant Name	Merchant Name
Merchant City	Where merchant is located
Merchant Country	Merchant Country

- If multiple merchants have multiple MID's, refer to the steps listed above to **Add New Property** again or contact the Oracle Hospitality Consulting Team for assistance.
- Merchant name should be 5-25 letters, digits or special character [#.].

The screenshot shows a window titled "Oracle Payment Interface Configuration Tool" with a sub-header "Oracle Payment Interface - POS Configuration Tool". The configuration fields are as follows:

- POS Type: 9700
- Port: 5098
- Merchant ID: 9700000001
- Merchant Type: restaurant
- PosCrossMerchant: Disable
- PosCrossCheck: Disable

Merchant Configuration section:

- Merchant Name: [Empty text box]
- Merchant City: [Empty text box]
- Merchant Country: [Empty dropdown menu]

At the bottom left is the Oracle Hospitality logo. At the bottom right are "Previous" and "Next" buttons.

Figure 5-17 OPI Merchant Details Entry Screen

8. Click **Add Terminal**.

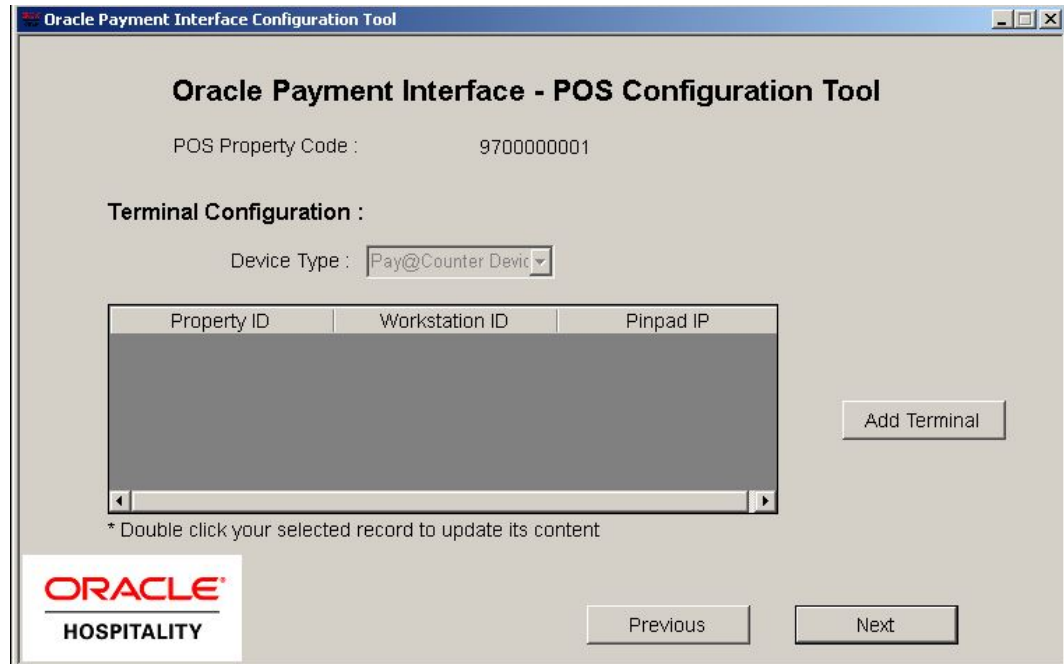


Figure 5-18 OPI Add Terminal Screen

9. Enter the POS Terminal information using the following settings:

Table 5-7 OPI POS Terminal Configuration

Field	Value
Workstation ID	Workstation ID in the EMC
IP	PINPad IP Address

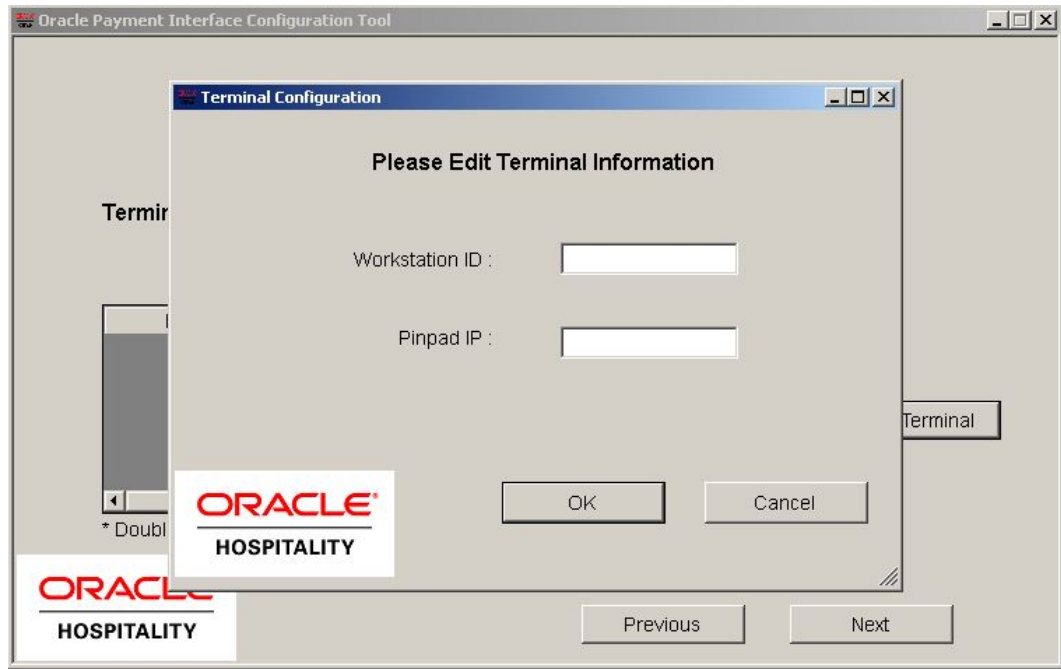


Figure 5-19 OPI Terminal Information Entry Screen

10. Click **Next** and then click **Exit**.

11. Review the OPI Configuration Summary page and click **Continue**.

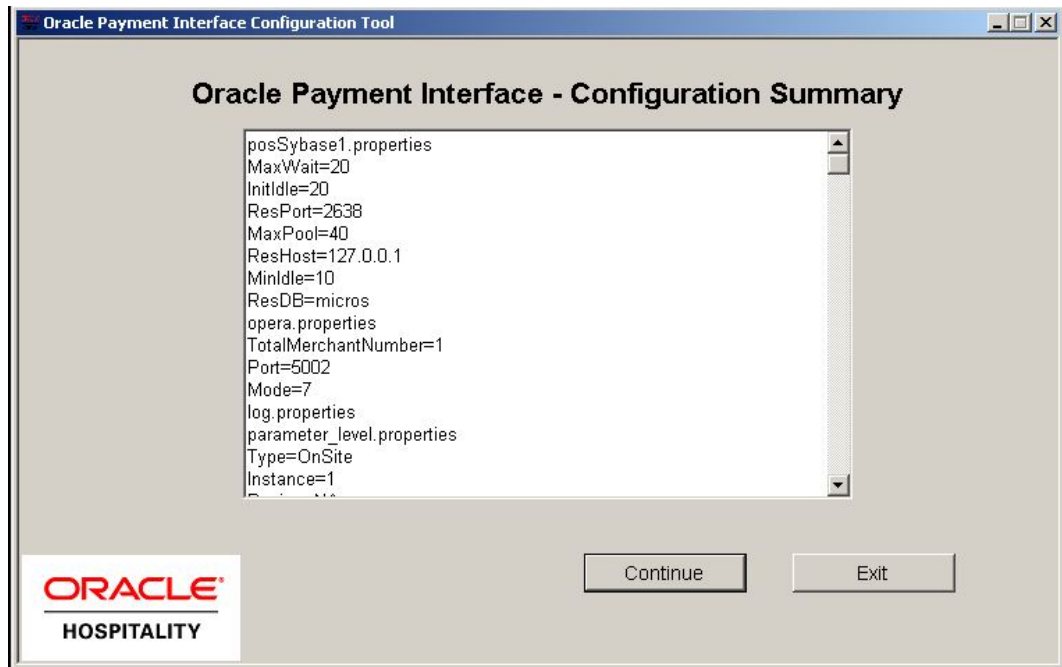


Figure 5-20 OPI Configuration Summary Screen

12. Click **Yes** to save the configuration settings.

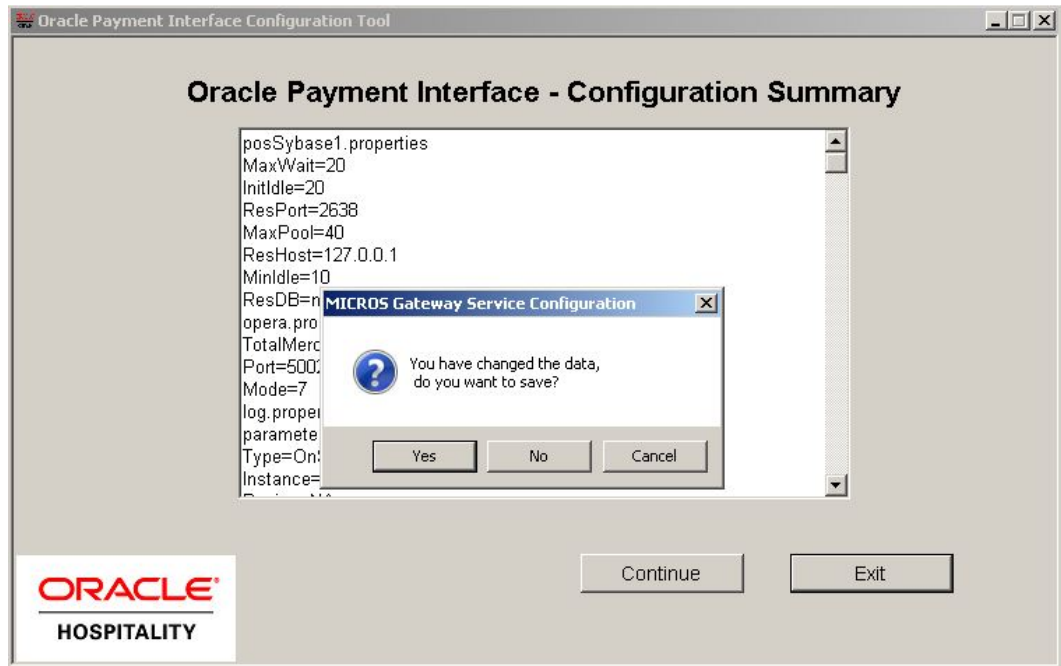


Figure 5-21 Save OPI Configuration Settings

-
13. Select **Yes** to restart the computer now or select **No** to restart the computer at a later time to complete installing and configuring the OPI.

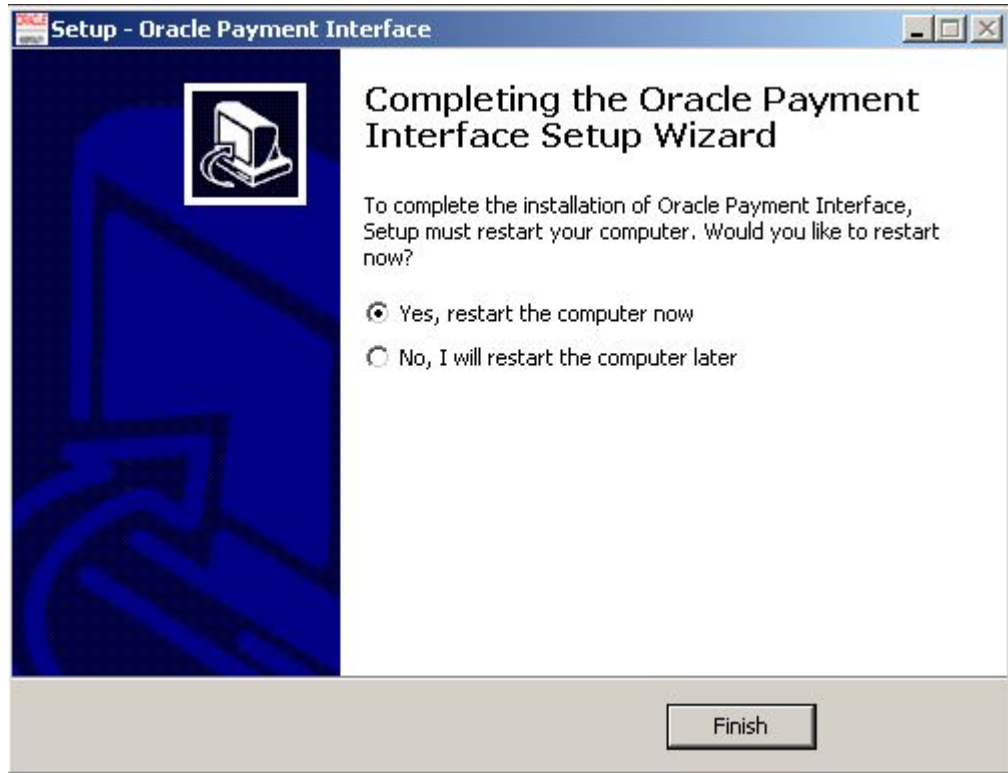


Figure 5-22 OPI Installation Completion