

FCIS Application Deployment in Weblogic
Oracle FLEXCUBE Investor Servicing
Release 12.43.0.0.0
[~~October~~[September](#)] [2015~~6~~[5](#)]

ORACLE
FINANCIAL SERVICES

Table of Contents

1.	IS APPLICATION DEPLOYMENT.....	1-1
1.1	IS APPLICATION FULL DEPLOYMENT.....	1-1
1.2	IS APPLICATION PARTIAL DEPLOYMENT.....	1-1
2.	BIP REPORTS.....	2-1
2.1	REPORTS DEPLOYMENT.....	2-1
1.	IS APPLICATION DEPLOYMENT.....	1-1
1.1	IS APPLICATION FULL DEPLOYMENT.....	1-1
1.2	IS APPLICATION PARTIAL DEPLOYMENT.....	1-1

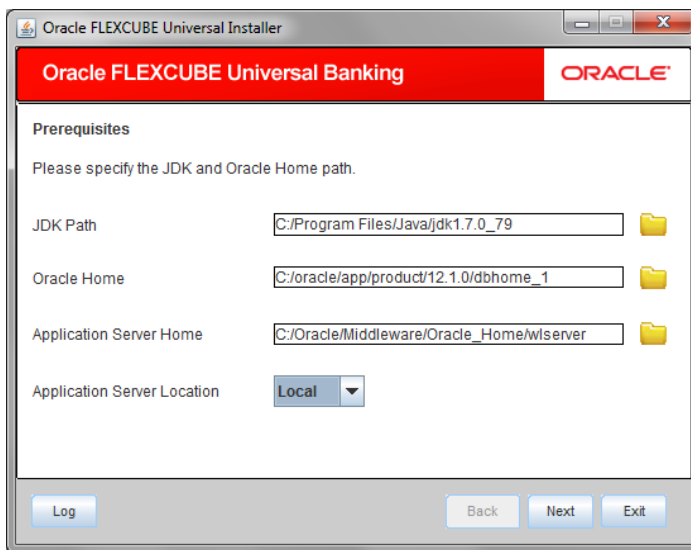
1. IS Application Deployment

This document describes step to install FCIS application into weblogic server in full and partial deployment modes.

Please refer “FCIS Manual Deployment WL” to install jersey-bundle before deployment of FCIS application.

1.1 IS Application Full Deployment

1. Launch Oracle FLEXCUBE IS Solution Installer.



Enter the following details

JDK Path:

Provide Home folder path of JDK1.7

Oracle Home

Provide home folder path of Oracle Client or Database

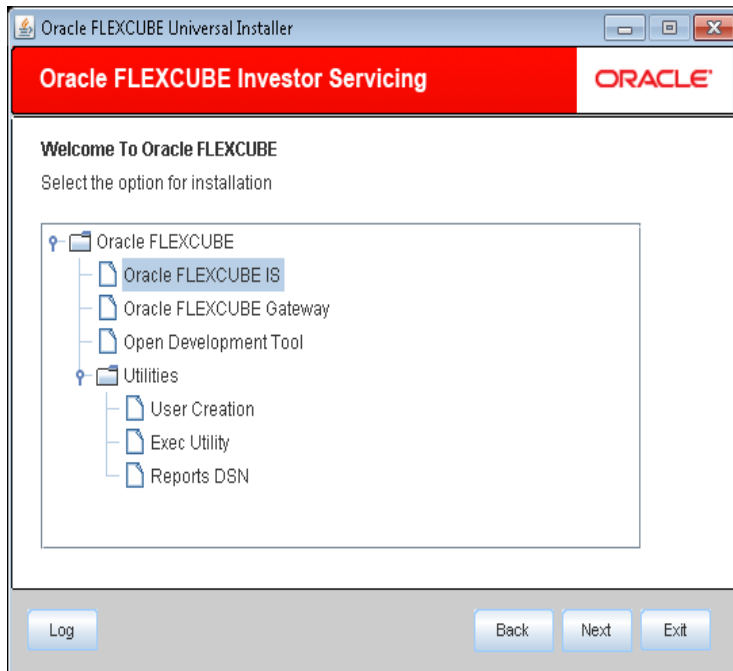
Application Server Home

Provide home folder path of Application Server

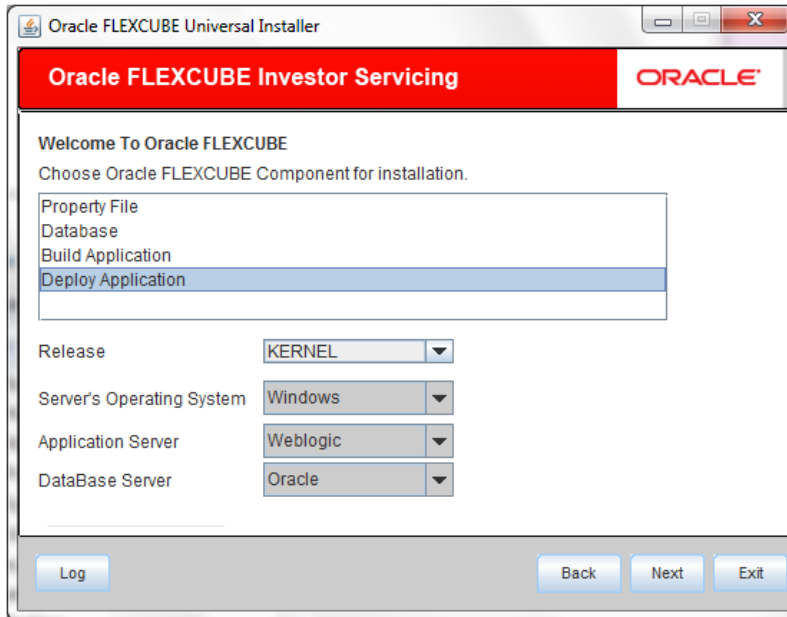
Application Server Location

Select location of the application server either local or remote

2. Click on "Next" to display the screen below.



3. Select "Oracle FLEXCUBE IS".
4. Click on "Next" to display the screen below.



5. Select **"Deploy Application"**.
6. Choose the appropriate Server's Operating System from the drop down.
7. Choose **"Weblogic"** from the Application Server drop down.
8. Click on **"Next"** to display the screen below.

Name	Value
Admin IP	10.10.10.10
Admin Port	1111
Admin Username	<user_name>
Server Admin Password

Test Connection

Type of Deployment: Full Deployment ▼

Log Back Next Exit

9. Provide the following details

Admin IP

Provide host address of admin server.

Admin Port

Provide port number of weblogic server.

Admin UserName

Please provide the appropriate Admin Username of the weblogic application server.

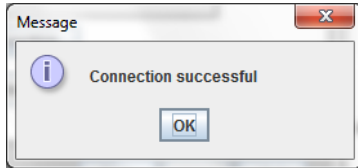
Admin Password

Please provide the appropriate Admin Password of the weblogic application server.

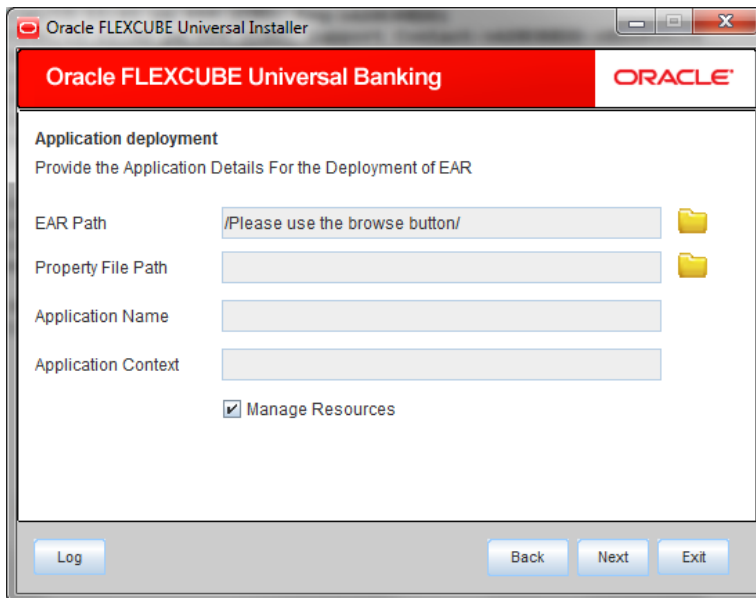
Type of Deployment

Choose "Full Deployment".

10. Click on "Test Connection" to test the connection with the application server. On successful connection, the following message will be displayed.



11. Click on “OK” and click on “Next” to display the screen below.



12. Provide the following details

EAR Path

Select the application EAR to be deployed using the browse button.

Note: The Application EAR path cannot be copied and pasted on to the text box, thereby demanding the use of the browse button to select the EAR.

Property File Path

Please select the appropriate path to the external properties file.

If the properties file is internal to the application EAR, it would be fetched on selection of the EAR and will be in a non-editable state.

Application Name

Application Name would be fetched on selection of the EAR and will be in a non-editable state.

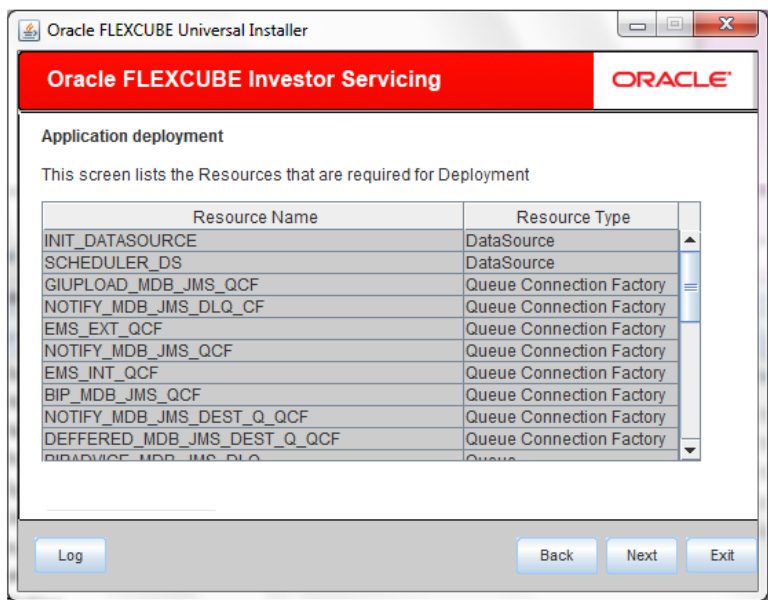
Application Context

Application Context would be fetched on selection of the EAR and will be in a non-editable state.

Manage Resources

Select this box if resources are to be created along with deployment.

13. Click on “Next”. If “Manage Resources” is checked then below screen shown otherwise skip to “Server Environment details for Deployment”



The current screen shows a list of resources that will be created and their type.

The screen provides a read only list of resources.

14. Click on Next. The following screen will be displayed.

Oracle FLEXCUBE Investor Servicing ORACLE

Application deployment
Please select the resource and update the details

Resource ID: INIT_DATASOURCE

S.No.	Property Name	Property Value
1	DataSource Driver	oracle.jdbc.OracleDriver
2	DataSource Type	INIT_DATASOURCE
3	Schema UserName	abc
4	Schema PAssword	...
5	IP Address	10.184.86.27
6	Port Number	1522
7	Service Name	avast1
8	Initial Capacity	15

Buttons: Save Changes, Test Connection, ☐ Modify JDBC url, Log, Back, Next, Exit

15. Provide the following details

Resource ID: Contains a list of data sources that are to be created.

The below table provides an option to take some basic values for the data source.

DataSource Driver: specified the jdbc driver url with which the connection is established.

Ex: oracle.jdbc.OracleDriver for Non-XA datasources

DataSource Type: specifies the type of datasource that is to be created, XA or Non-XA.

Schema Username: specified the username of the schema to which the connection is established.

Schema Password: specifies the password of the schema.

IP Address: specifies to provide the host address of the schema.

Port Number: provide the port number of schema.

Service Name: provide the schema name.

Initial Capacity: The number of physical connections to create when creating the connection pool in the data source

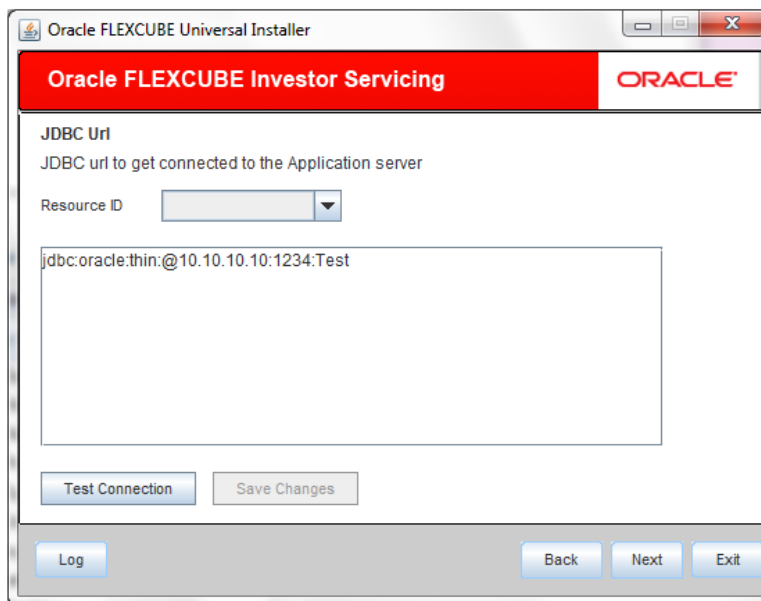
Maximum Capacity: The maximum number of physical connections that this connection pool can contain.

Capacity Increment: The increment by which this JDBC connection pool's capacity is expanded.

Shrink Frequency: The number of seconds to wait before shrinking a connection pool that has incrementally increased to meet demand.

Connection Reserve Timeout: The number of seconds after which a call to reserve a connection from the connection pool will timeout.

16. **Save changes:** On click of this saves the values provided In the table against corresponding value of Resource ID.
17. **Test Connection:** On click of this it will try to establish connection with required details provided in the table.
18. **Modify JDBC Url:** Select modify JDBC url for modifying the JDBC url.If 'Modify JDBC url' is selected, the following screen will be displayed.



The screenshot shows a window titled "Oracle FLEXCUBE Universal Installer". The main content area is titled "Oracle FLEXCUBE Investor Servicing" and features the Oracle logo. Below the title, there is a section labeled "JDBC Url" with the instruction "JDBC url to get connected to the Application server". A "Resource ID" dropdown menu is present, followed by a large text area containing the JDBC URL "jdbc:oracle:thin:@10.10.10.10:1234:Test". At the bottom of the text area are two buttons: "Test Connection" and "Save Changes". The bottom of the window has a navigation bar with buttons for "Log", "Back", "Next", and "Exit".

Resource ID: It provides the list of all the datasources created. Select the data source for which the JDBC url needs to be modified.

Note: The url generated from the previous screen will be displayed here. If the user wants to change the Url , it can be changed in the present screen.

Test Connection: Click 'Test Connection' to check the connection using the changed url,If the url changed is correct the connection will be success.

Save Changes: Click on 'Save Changes' fo4r saving the changed JDBC url

Click 'Next', the following screen will be displayed.

Oracle FLEXCUBE Universal Installer

Oracle FLEXCUBE Investor Servicing

ORACLE

Application Full Deployment

Specify Server environment details for deployment

Domain Name

Default_domain

Get Details

S.No.	Server Name	Deploy
1	AdminServer	<input type="checkbox"/>
2	ManagedServer	<input type="checkbox"/>
3	ClusterTest	<input type="checkbox"/>
4	AVAST	<input type="checkbox"/>

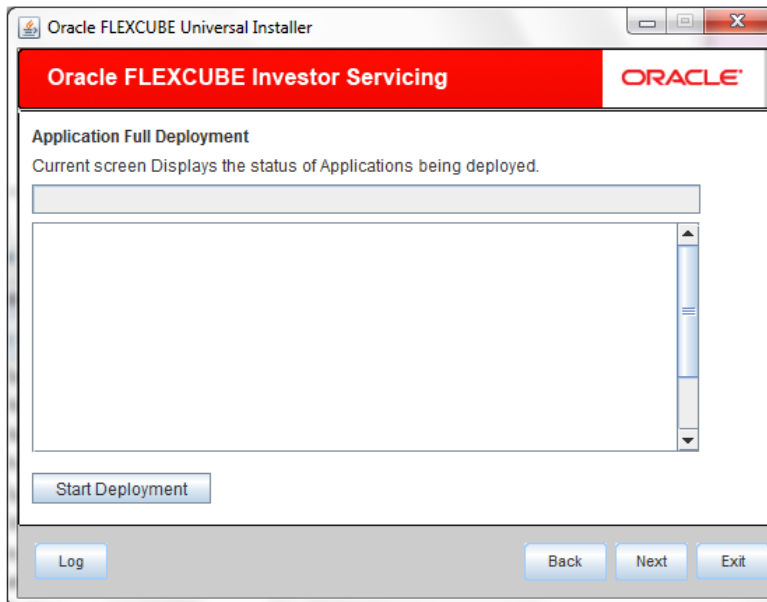
Log

Back

Next

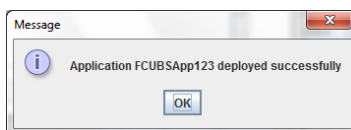
Exit

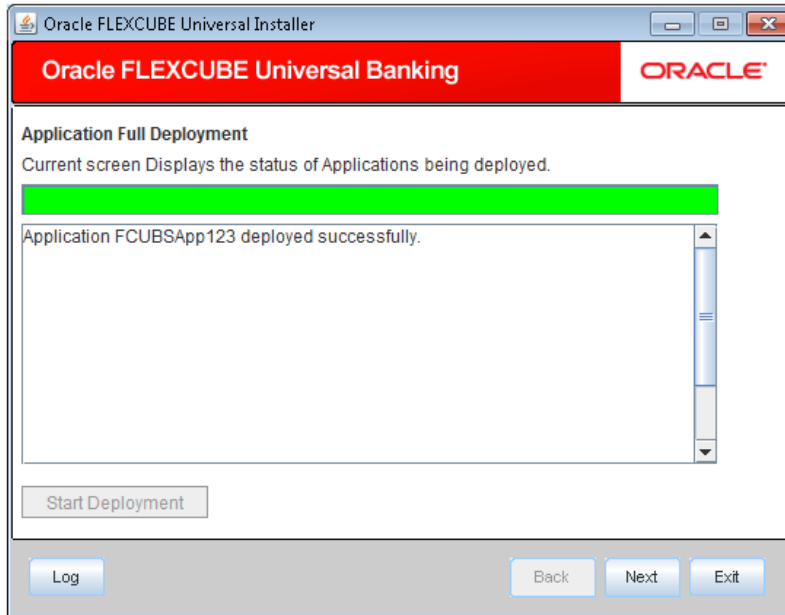
- The **Domain Name** shows the weblogic domains name.
19. On click of '**Get Details**', the list of available servers are displayed in the table.
- Atleast one** server should be selected to proceed to next screen.
20. Click on "Next" to display the screen below.



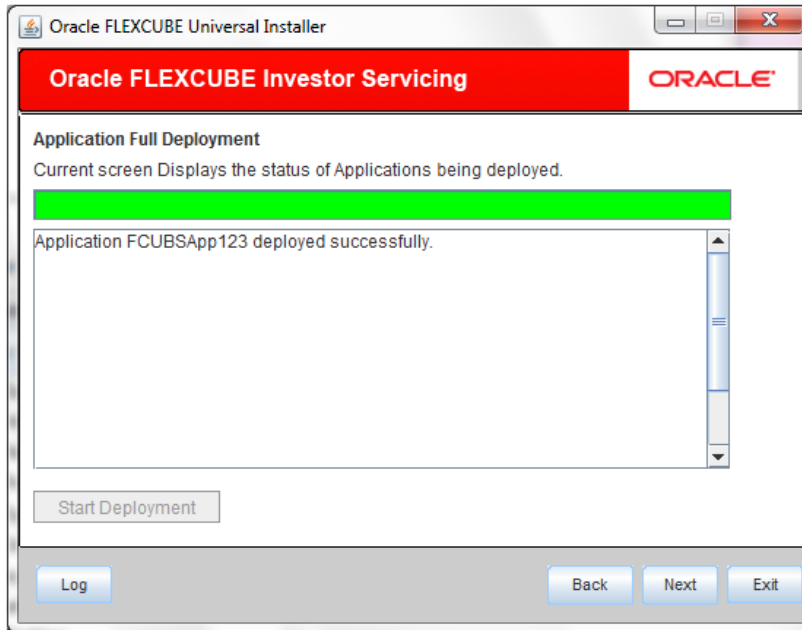
21. Click on "**Start Deployment**" to begin the process of application deployment.

On successful deployment, you will get the following message and the screen is expected to look like below.





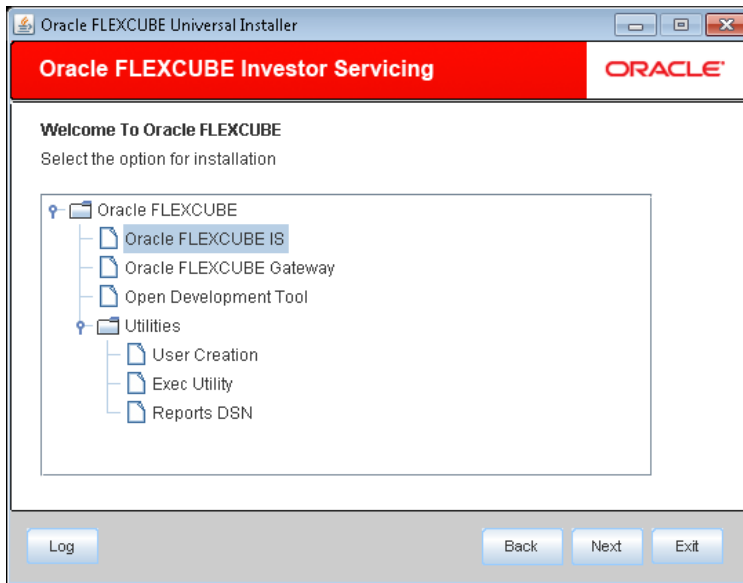
If the deployment is not successful, the 'Undeploy' button will be enabled.



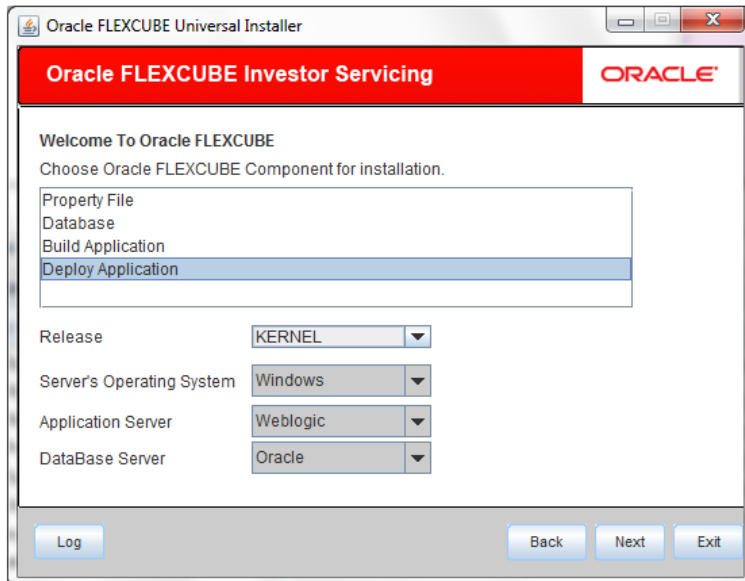
22. Click 'Undeploy' for undeploying the partially deployed EAR from the server.

1.2 IS Application Partial Deployment

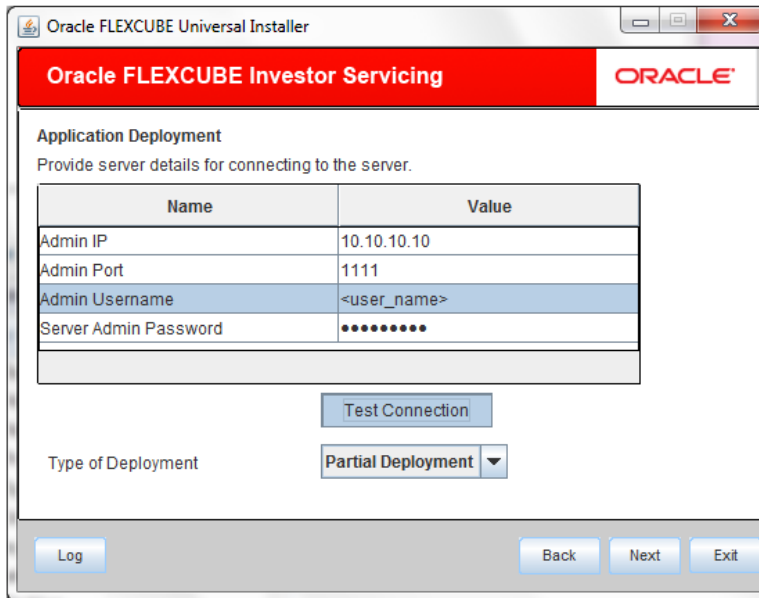
1. Launch Oracle FLEXCUBE Investor Servicing Installer.
2. Click on "Next" to display the screen below.



3. Select "Oracle FLEXCUBE IS".
4. Click on "Next" to display the screen below.



5. Select "Deploy Application".
6. Choose the appropriate Server's Operating System from the drop down.
7. Choose "Weblogic" from the Application Server drop down.
8. Click on "Next" to display the screen below.



Oracle FLEXCUBE Universal Installer

Oracle FLEXCUBE Investor Servicing ORACLE

Application Deployment
Provide server details for connecting to the server.

Name	Value
Admin IP	10.10.10.10
Admin Port	1111
Admin Username	<user_name>
Server Admin Password	••••••••

Test Connection

Type of Deployment: Partial Deployment ▼

Log Back Next Exit

9. Please provide the appropriate Admin Username of the weblogic application server.

Admin Password

Please provide the appropriate Admin IP of the weblogic application server.

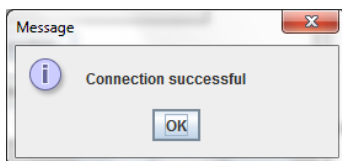
Admin Password

Please provide the appropriate Admin Password of the weblogic application server.

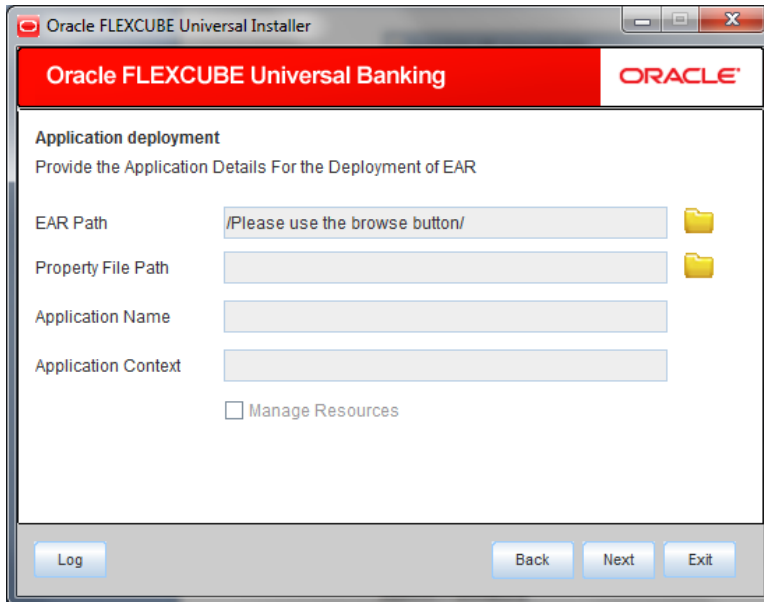
Type of Deployment

Choose "Partial Deployment".

Click on "**Test Connection**" to test the connection with the application server. On successful connection, the following message will be displayed.



Click on "OK" and click on "Next" to display the screen below.



10. Provide The following details

EAR PATH

Please provide path of the ear which is to be deployed.

Please select the appropriate path to the external properties file.

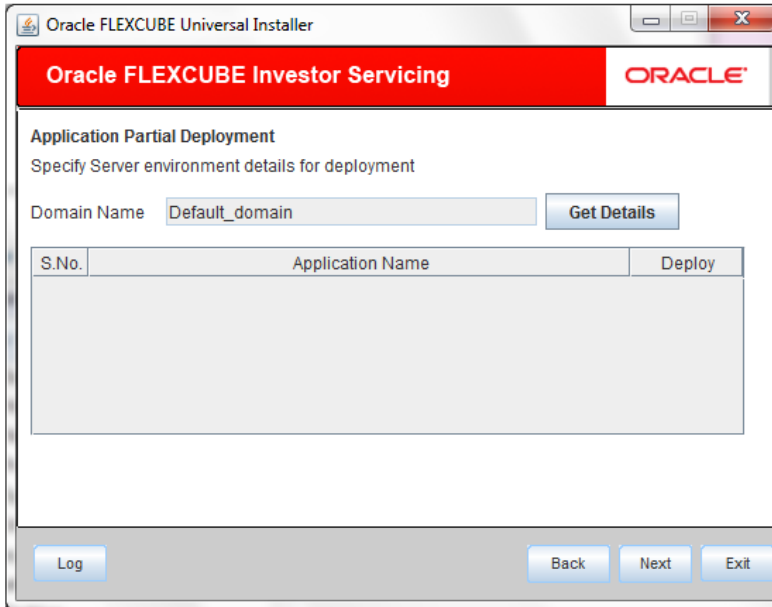
If the properties file is internal to the application EAR, it would be fetched on selection of the EAR and will be in a non-editable state.

Application Name and **Application Context** will be appeared once user inputs the ear path.

Manage Resources is disabled as resource creation will be already done for full deployment.

Property File Path

11. Click on "Next" to display the screen below.



12. Provide the following details

Get Details

Please click on "Get Details" to list all the applications deployed on weblogic application server.

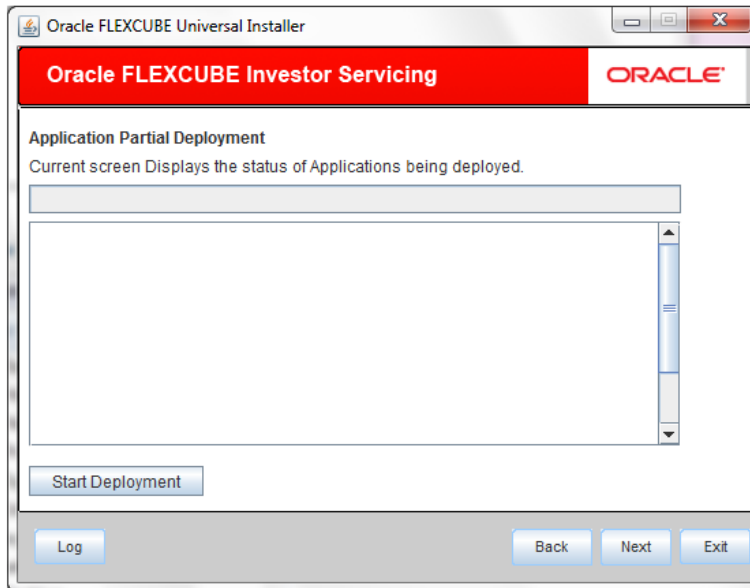
Application Name

Please select the application to be patched.

Note

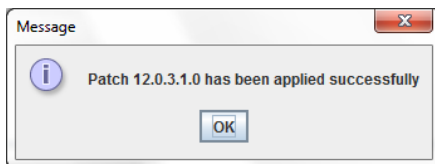
If no application is available then partial deployment cannot be proceeded further.

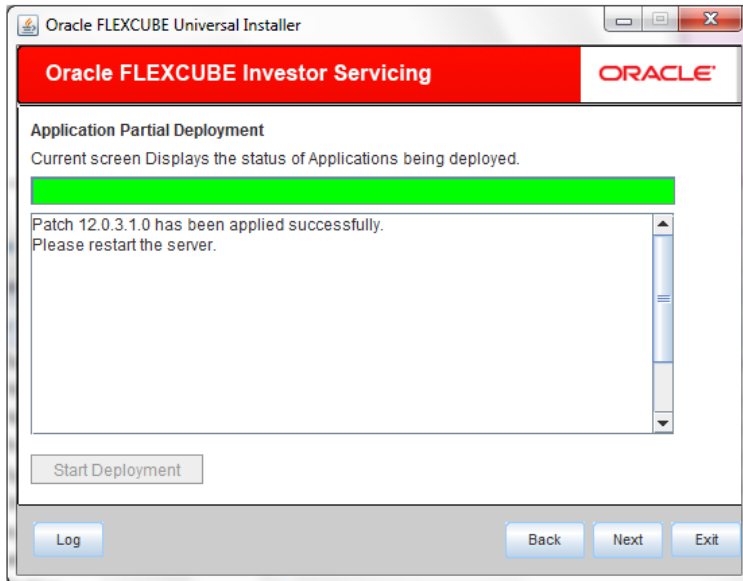
13. Click on "Next" to display the screen below.



14. Click on **“Start Deployment”** to start the partial/patch deployment.

On successful partial deployment, the following message would be displayed and the screen would like below.





15. Please restart the server for changes pertaining to the deployed patch to reflect.

2. BIP Reports

Formatted: Heading 1, Tab stops: Not at 0.31"

2.1 Reports Deployment

1. Copy all the files from the SVN from the below mentioned folder:

[\Soft\BIReports\DataModels](#)

[\Soft\BIReports\Reports](#)

2. Place that in a Folder FCReports and change the file extension to FCReports.xdrz

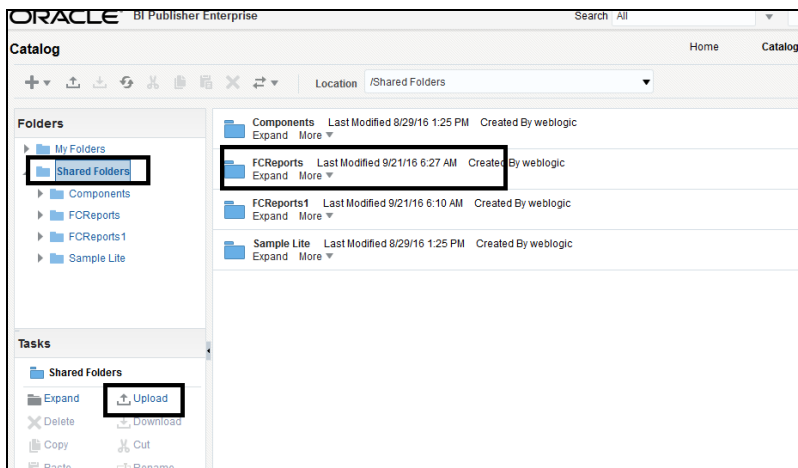
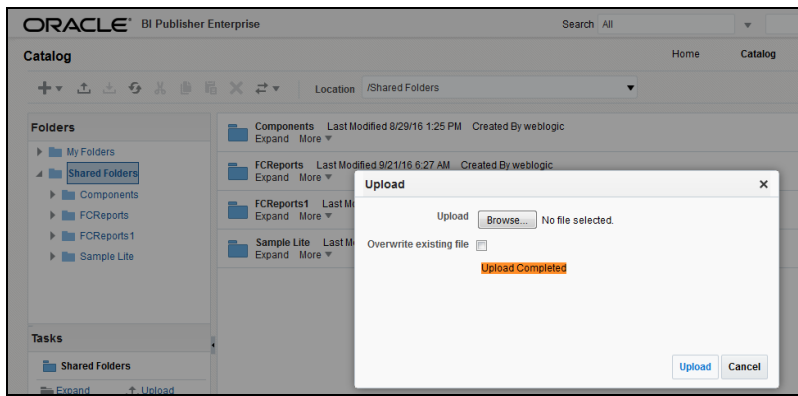
3. Upload the file as mentioned in the screen shot.

Formatted: Numbered List, Numbered + Level: 1 + Numbering Style: 1, 2, 3, ... + Start at: 1 + Alignment: Left + Aligned at: 0.5" + Tab after: 0.75" + Indent at: 0.75"

Formatted: Numbered List, Indent: Left: 0.75"

Formatted: Numbered List, No bullets or numbering

Formatted: Tab stops: Not at 0.31"





FCIS Application Deployment Weblogic

Release 12.1.3.0.0.0

[~~October~~September] [20156]

Oracle Financial Services Software Limited
Oracle Park
Off Western Express Highway
Goregaon (East)
Mumbai, Maharashtra 400 063
India

Worldwide Inquiries:
Phone: +91 22 6718 3000
Fax: +91 22 6718 3001
www.oracle.com/financialservices/

Copyright © [2007], [20165], Oracle and/or its affiliates. All rights reserved.

Oracle and Java are registered trademarks of Oracle and/or its affiliates. Other names may be trademarks of their respective owners.

U.S. GOVERNMENT END USERS: Oracle programs, including any operating system, integrated software, any programs installed on the hardware, and/or documentation, delivered to U.S. Government end users are "commercial computer software" pursuant to the applicable Federal Acquisition Regulation and agency-specific supplemental regulations. As such, use, duplication, disclosure, modification, and adaptation of the programs, including any operating system, integrated software, any programs installed on the hardware, and/or documentation, shall be subject to license terms and license restrictions applicable to the programs. No other rights are granted to the U.S. Government.

This software or hardware is developed for general use in a variety of information management applications. It is not developed or intended for use in any inherently dangerous applications, including applications that may create a risk of personal injury. If you use this software or hardware in dangerous applications, then you shall be responsible to take all appropriate failsafe, backup, redundancy, and other measures to ensure its safe use. Oracle Corporation and its affiliates disclaim any liability for any damages caused by use of this software or hardware in dangerous applications.

This software and related documentation are provided under a license agreement containing restrictions on use and disclosure and are protected by intellectual property laws. Except as expressly permitted in your license agreement or allowed by law, you may not use, copy, reproduce, translate, broadcast, modify, license, transmit, distribute, exhibit, perform, publish or display any part, in any form, or by any means. Reverse engineering, disassembly, or decompilation of this software, unless required by law for interoperability, is prohibited.

The information contained herein is subject to change without notice and is not warranted to be error-free. If you find any errors, please report them to us in writing.

This software or hardware and documentation may provide access to or information on content, products and services from third parties. Oracle Corporation and its affiliates are not responsible for and expressly disclaim all warranties of any kind with respect to third-party content, products, and services. Oracle Corporation and its affiliates will not be responsible for any loss, costs, or damages incurred due to your access to or use of third-party content, products, or services.