

Setting up Installer  
Oracle FLEXCUBE Investor Servicing  
Release 12.0.3.0.0  
[April] [2014]



---

# Table of Contents

<b>1.</b>	<b>SETTING UP ORACLE FLEXCUBE INSTALLER.....</b>	<b>1-1</b>
1.1	INTRODUCTION .....	1-1
1.2	SCOPE OF INSTALLER.....	1-1
1.3	RUNNING ORACLE FLEXCUBE INSTALLER ON WINDOWS.....	1-2
1.4	RUNNING ORACLE FLEXCUBE INSTALLER ON LINUX.....	1-6
1.4.1	<i>Login to PUTTY.....</i>	<i>1-6</i>
1.4.2	<i>Running Oracle FLEXCUBE Installer through XManager.....</i>	<i>1-8</i>
<b>2.</b>	<b>RUNNING ORACLE FLEXCUBE INSTALLER IN SILENT MODE .....</b>	<b>2-1</b>
2.1.1	<i>Running Installer in Silent Mode in Windows .....</i>	<i>2-2</i>
2.1.2	<i>Running Installer in Silent Mode in Linux.....</i>	<i>2-3</i>

---

# 1. Setting up Oracle FLEXCUBE Installer

## 1.1 Introduction

Before installing Oracle FLEXCUBE, you need to set up Oracle FLEXCUBE Installer on the server. This document explains the methods of setting up the installer.

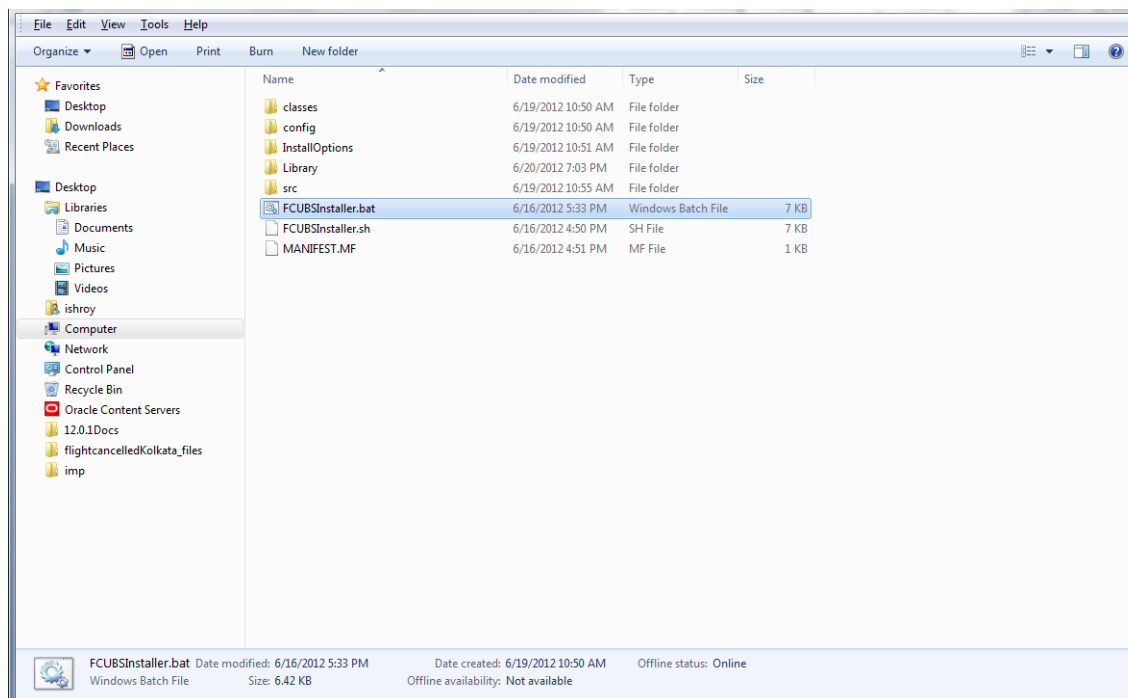
The Oracle FLEXCUBE Installer picks up the source files from the Source Directory and builds the enterprise archive file. The enterprise archive file is then deployed on the Application Server using the Application Server admin console.

## 1.2 Scope of Installer

<b>Building Application</b>	Application building describes the process of creating property file with the required plug-ins and corresponding plug-in related properties, It also explains the process of building an application.		<b>Mandatory installer components</b>
			JDK Path
<b>Deploying Application</b>	Application deployment will create the resources in the selected application server and deploy the selected application in the application server		JDK PATH Application sever home
	<b>WEBLOGIC</b>	Deploying application in weblogic will create the resources required for deployment of an application in the weblogic server and deploy the selected application in the weblogic.	
	<b>WEBSPHERE</b>	Deploying application in websphere will deploy the selected application in websphere.	
<b>Database</b>	This section describes the basic instructions for setting up the database, it explains the steps for Preparing schema from Baseline, compiling objects, loading static data setup and it also explains the step by step instructions for running Basic setup. It also explains the steps for Preparing schema from Baseline and loading data from dump and also explains the instructions for compiling objects and loading static data and imp dump		JDK path  Oracle Home

## 1.3 Running Oracle FLEXCUBE Installer on Windows

Source folder in the local system appears as below:



Follow the steps given below to run the installer in Windows:

1. Invoke the installer by double-clicking 'FCUBSInstaller.bat' from the installer source folder.
2. You get a prompt to enter the Java Home Path. Enter the Java Home Path and press 'Enter' key. This is a mandatory field and the value entered is validated.

*Refer Release Notes for valid JDK version*

```
C:\Windows\system32\cmd.exe

Flex Cube UBS : Release 12.2.0.0.0 - Production on 19:15:17.74 Tue 09/27/2016
Copyright (c) 2016, Oracle Financial Services Software Ltd. All rights reserved.

Checking the write permissions.....
checking whether Installer is running.....
Creating a new flag file.....
sucessfully created the flag File.

Initializing the errorLevel to 0

Checking Java Home.....
Please input Java path [Example: c:\Software\Java\jdk1.8.0_91
#####JAVAHOME NOT DEFINED#####
Enter JAVA HOME Directory:c:\Software\Java\jdk1.8.0_91
JAVA_HOME has been set
```

3. You get a prompt to input ORACLE Home Path. Enter the ORACLE Home Path and press 'Enter' key. This is an optional field and the value entered is not validated.

```
C:\Windows\system32\cmd.exe

Flex Cube UBS : Release 12.2.0.0.0 - Production on 19:15:17.74 Tue 09/27/2016
Copyright (c) 2016, Oracle Financial Services Software Ltd. All rights reserved.

Checking the write permissions.....
checking whether Installer is running.....
Creating a new flag file.....
sucessfully created the flag File.

Initializing the errorLevel to 0

Checking Java Home.....
Please input Java path [Example: c:\Software\Java\jdk1.8.0_91
#####JAVAHOME NOT DEFINED#####
Enter JAVA HOME Directory:c:\Software\Java\jdk1.8.0_91
JAVA_HOME has been set
Initializing the errorLevel to 0

Checking Java Home.....
Java Home Path has been set sucessfully.

#####ORACLE HOME NOT DEFINED#####
Enter Oracle Home Directory:c:\Software\Oracle12c\product\12.1.0\dbhome_1
Oracle Home set
Oracle Home set sucesfully
Clearing the compiled files.....
Clearing the jar file.
Jar to be copied from c:\Software\Oracle12c\product\12.1.0\dbhome_1\jdbc\lib\ojd
bc6.jar
Copying jars into the Library...
1 file(s) copied.
```

4. You get a prompt to input Application Server Home Path. Enter the Application Server Home Path and press 'Enter' key. This is an optional field and the value entered is not validated.

```

C:\Windows\system32\cmd.exe

Flex Cube UBS : Release 12.2.0.0.0 - Production on 19:15:17.74 Tue 09/27/2016
Copyright (c) 2016, Oracle Financial Services Software Ltd. All rights reserved.

Checking the write permissions.....
checking whether Installer is running.....
Creating a new flag file.....
sucessfully created the flag File.
Initializing the errorLevel to 0

Checking Java Home.....
Please input Java path [Example: c:\Software\Java\jdk1.8.0_91
#####JAVAHOME NOT DEFINED#####
Enter JAVA HOME Directory:c:\Software\Java\jdk1.8.0_91
JAVA_HOME has been set
Initializing the errorLevel to 0

Checking Java Home.....
Java Home Path has been set sucessfully.

#####ORACLE HOME NOT DEFINED#####
Enter Oracle Home Directory:c:\Software\Oracle12c\product\12.1.0\dbhome_1
Oracle Home set
Oracle Home set sucessfully
Clearing the compiled files.....
Clearing the jar file.
Jar to be copied from c:\Software\Oracle12c\product\12.1.0\dbhome_1\jdbc\lib\ojd
bc6.jar
Copying jars into the Library...
1 file(s) copied.

Checking logs Folder.....
--Current Folder--
--avast--
this InstallationShipment "EXEC"
Inside Checking APPSERVER HOME.....
appserverhome

#####APPSERVER HOME NOT DEFINED#####
Enter APPSERVER HOME Directory:c:\Software\Weblogic12211\wlserver_

```

5. The INSTALLER Welcome screen is displayed.
6. Proceed with installation process.



On the first time launch of the installer on a system, all the fields in the installer will be displayed according to the values entered by the user at the command line level and the same data is saved in env.properties.


On subsequent launches of installer on the same machine, the installer will read the paths from env.properties and display in the respective fields.


Oracle FLEXCUBE Universal Installer 12.3.0.0.0


**Oracle FLEXCUBE Investor Servicing** ORACLE


**Prerequisites**

Please specify the JDK and Oracle Home path.

JDK Path  

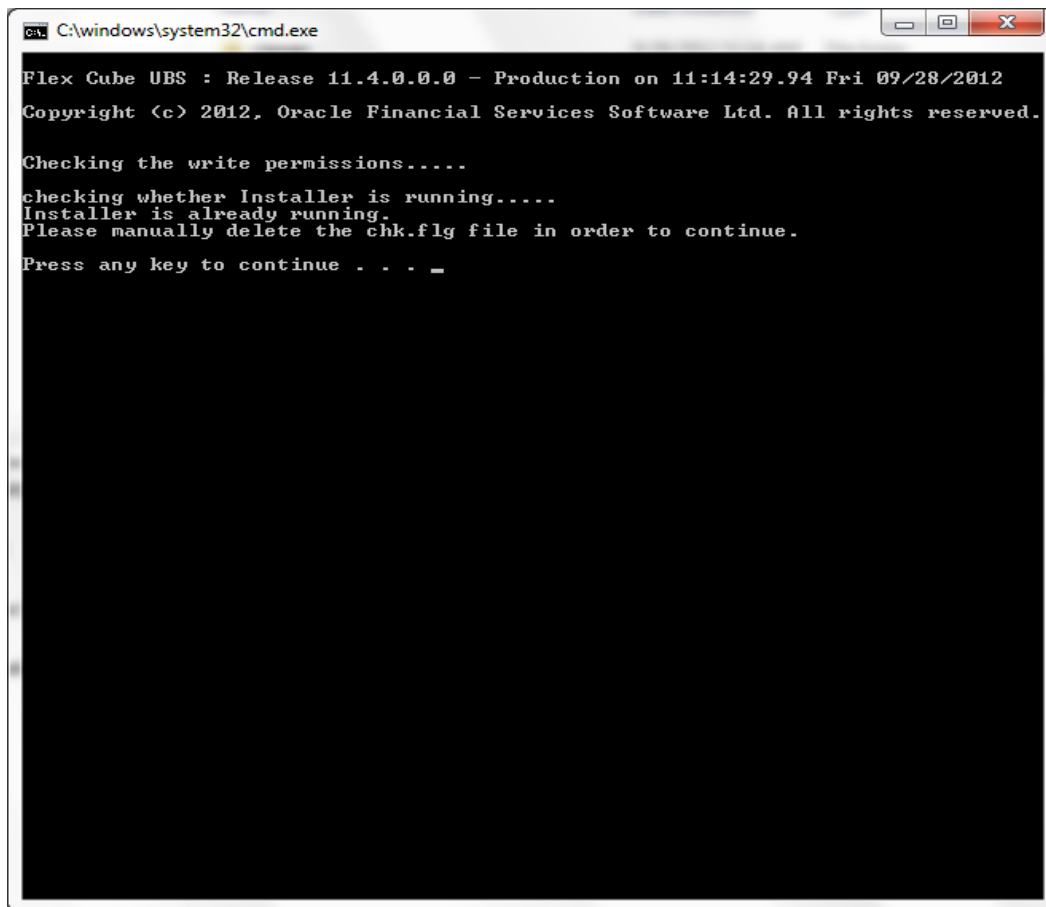
Oracle Home  

Application Server Home  

Application Server Location  



If you re-launch the installer which was closed abruptly, the following screen is displayed.

A screenshot of a Windows command prompt window. The title bar shows 'C:\windows\system32\cmd.exe'. The text inside the window is as follows:

```
Flex Cube UBS : Release 11.4.0.0.0 - Production on 11:14:29.94 Fri 09/28/2012
Copyright (c) 2012, Oracle Financial Services Software Ltd. All rights reserved.

Checking the write permissions.....
checking whether Installer is running.....
Installer is already running.
Please manually delete the chk.flg file in order to continue.
Press any key to continue . . . _
```

In this case, you have to delete the file 'chk.flg', created in the installer sources and again re-launch the Installer.

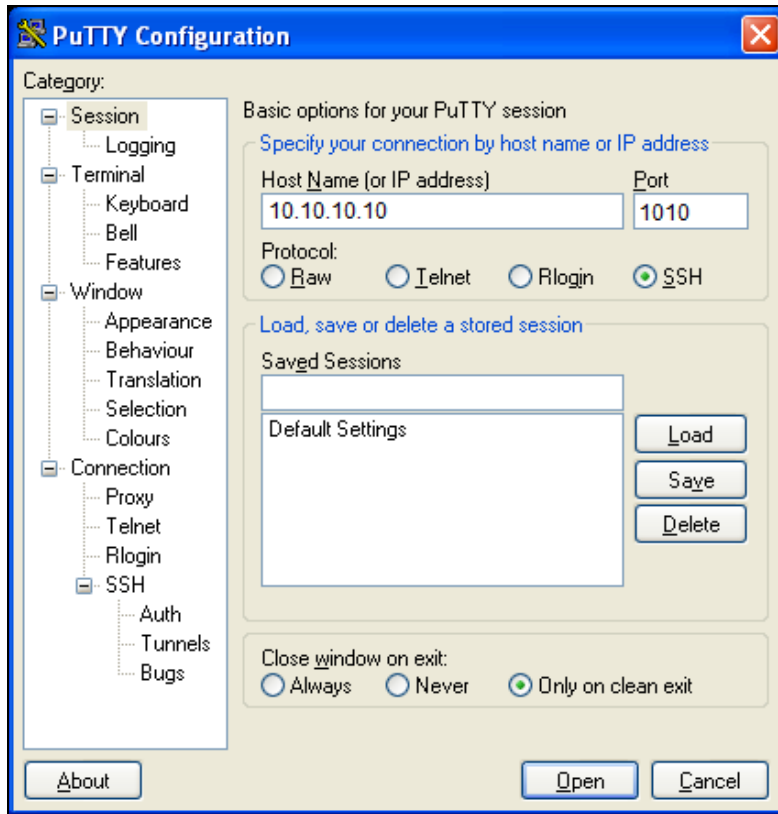
## 1.4 **Running Oracle FLEXCUBE Installer on LINUX**

This section describes the method to run Oracle FLEXCUBE Installer on LINUX system.

### 1.4.1 **Login to PUTTY**

In order to run installer on LINUX machines, you need to login to the LINUX machine using PuTTY. Go to 'PuTTY Configuration' screen.





1. Specify the following details:

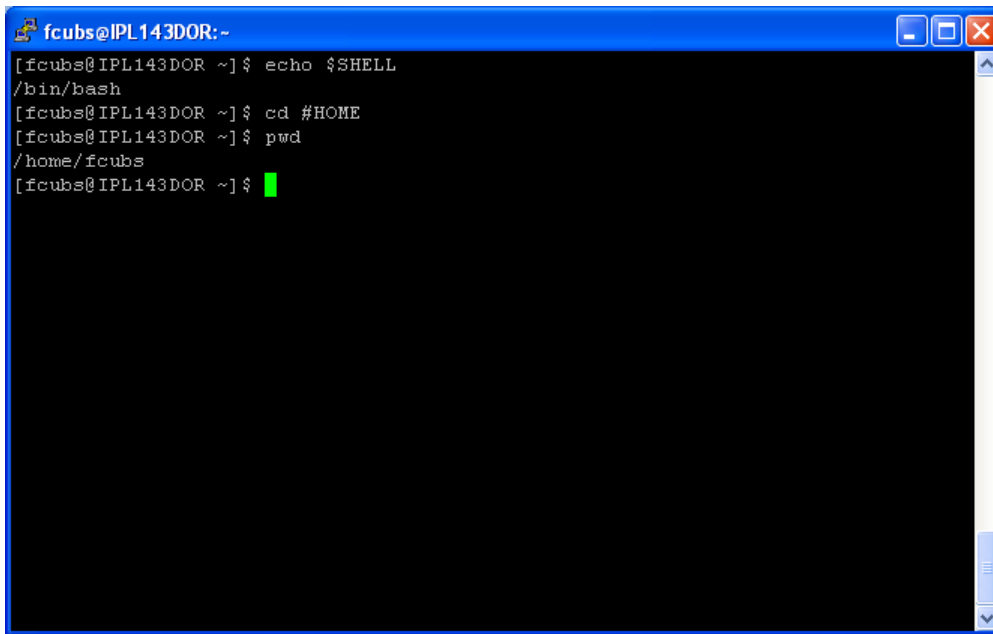
### Host Name

Specify the host address of LINUX machine which you need to connect.

### Protocol

Select SSH as the protocol.

2. Once you have provided these details, click 'Open'. You will be prompted for the login ID and password of the LINUX machine.

A screenshot of a terminal window with a blue title bar. The title bar text is 'fcubs@IPL143DOR:~'. The terminal content shows a series of commands and their outputs: 'echo \$SHELL' returns '/bin/bash', 'cd \$HOME' returns '/home/fcubs', and 'pwd' returns '/home/fcubs'. The prompt is '[fcubs@IPL143DOR ~]\$' with a green cursor.

```
[fcubs@IPL143DOR ~]$ echo $SHELL
/bin/bash
[fcubs@IPL143DOR ~]$ cd $HOME
[fcubs@IPL143DOR ~]$ pwd
/home/fcubs
[fcubs@IPL143DOR ~]$
```

3. Specify the login details:

You can check the current shell for the user in putty console using the following command.

**echo \$SHELL**

In case the current shell is not bash, you need to set the shell to bash.

You can check the user home directory using the following command.

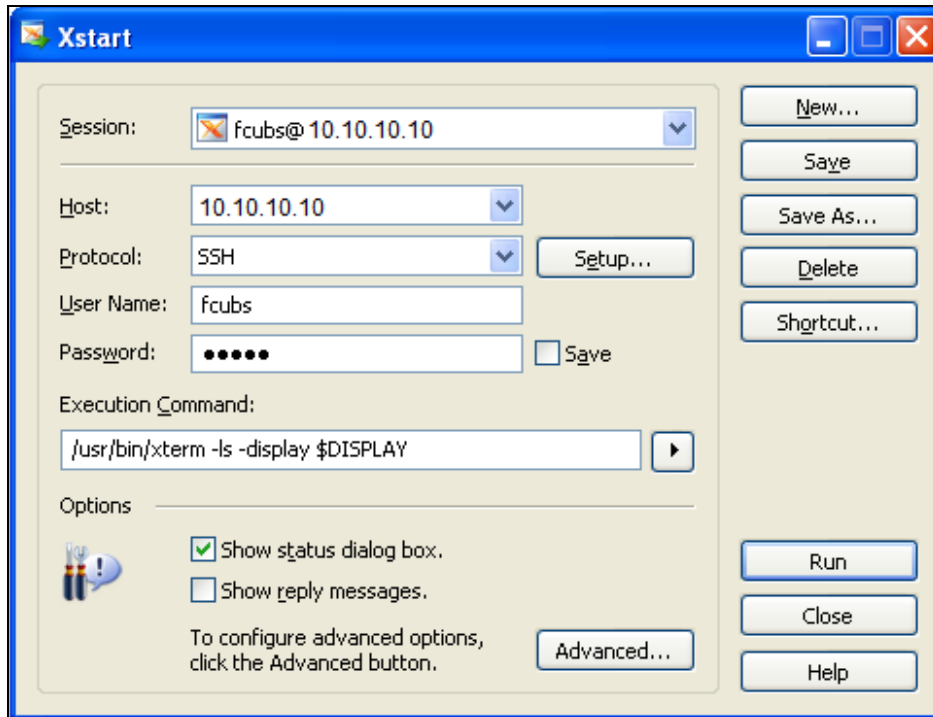
**cd \$HOME**

**\$pwd**

### 1.4.2 Running Oracle FLEXCUBE Installer through XManager

In order to run Oracle FLEXCUBE Installer on LINUX machine, you need to have the software called XManager. This section contains the settings required for running Oracle FLEXCUBE Installer through XManager on LINUX machines.

Install XManager. You can find an icon 'Xstart' inside XManager folder. Double-click 'Xstart' icon in order to connect to the server. The following screen is displayed.



1. Specify the following details:

### Session

Specify the session name.

### Host

Specify the LINUX machine IP address.

### Protocol

Specify the protocol based on the the operating system.

A few examples for the protocols for various operating systems are given below:

Operating System	Protocol
Oracle Enterprise Linux	SSH

### User Name

Specify the LINUX user name.

### Password

Specify the password for the LINUX user name.

### Excution Command

Specify the execution command based on the operating system.

Operating System	Execution Command
Oracle Enterprise Linux	/usr/bin/xterm -ls -display \$DISPLAY

- Once you have specified the details, click 'Run'. The Xstart Console window is displayed.

```

fcubs@IPL143DOR: ~/test/GatewayInstaller/SOURCE
[fcubs@IPL143DOR SOURCE]$ ls
build.xml          FCUBSInstaller.jar  Library           nbproject_build
config             FCUBSInstaller.sh  logs              nbproject_dist
%DOMAIN_HOME%     Images              MANIFEST.MF       ScriptTest.sh
FCUBSInstaller.bat InstallOptions      nbproject         src
[fcubs@IPL143DOR SOURCE]$ ./FCUBSInstaller.sh

```

- Use the following command to list the files present in the directory:

**ls**

In order to run the installer, you need to invoke the 'FCUBSInstaller.sh' file using the following command.

**./FCUBSInstaller.sh OR sh FCUBSInstaller.sh**


The command starts the installer. The User will be prompted to enter the JAVA Home (mandatory), Application Server Home(Optional) AND ORACLE Home (Optional) after which the following screen is displayed.


**Oracle FLEXCUBE Universal Installer 12.3.0.0.0**


**Oracle FLEXCUBE Investor Servicing** **ORACLE**


**Prerequisites**

Please specify the JDK and Oracle Home path.

JDK Path  

Oracle Home  

Application Server Home  

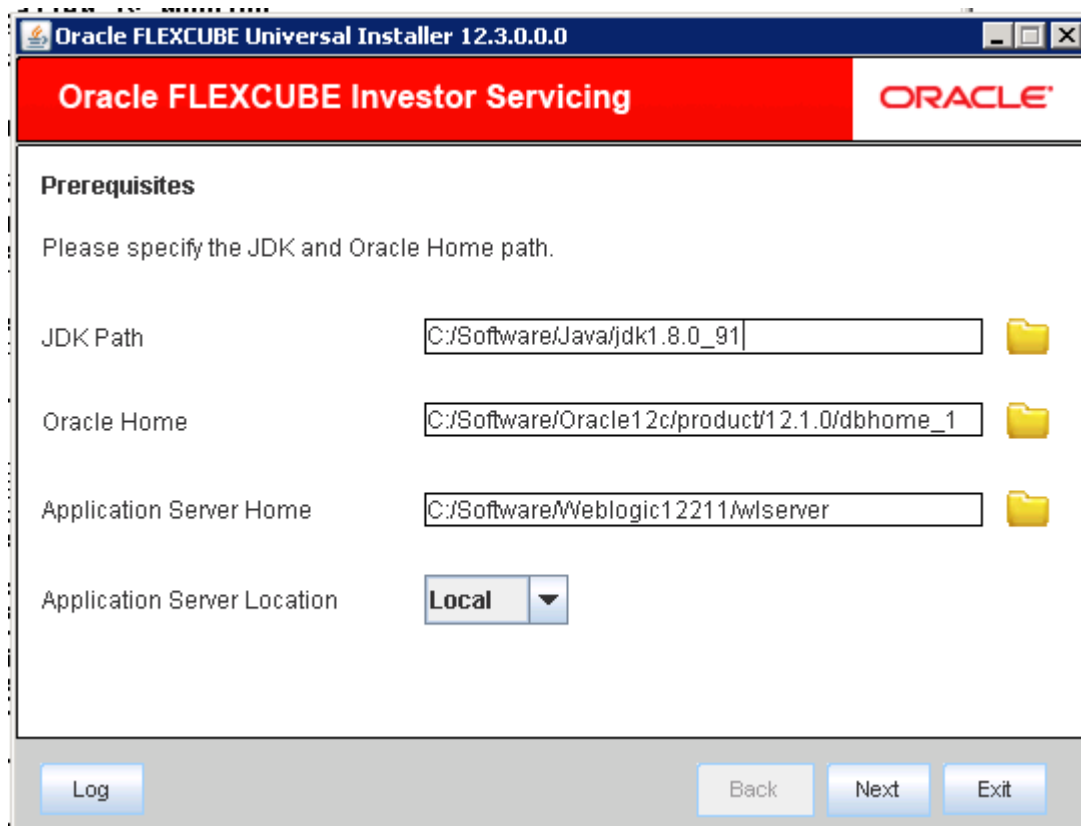
Application Server Location  

4. Proceed with installation process.



On the first time launch of the installer on a system, all the fields in the installer will be displayed according to the values entered by the user at the command line level and the same data is saved in env.properties.

On subsequent launches of installer on the same machine, the installer will read the paths from env.properties and display in the respective fields.



5. Proceed with installation process.

The 'Installer folder and the Destination folder must be present in the LINUX server with full access permissions.

---

## 2. Running Oracle FLEXCUBE Installer in Silent Mode

This section describes the method to run Oracle FLEXCUBE Installer in silent mode.

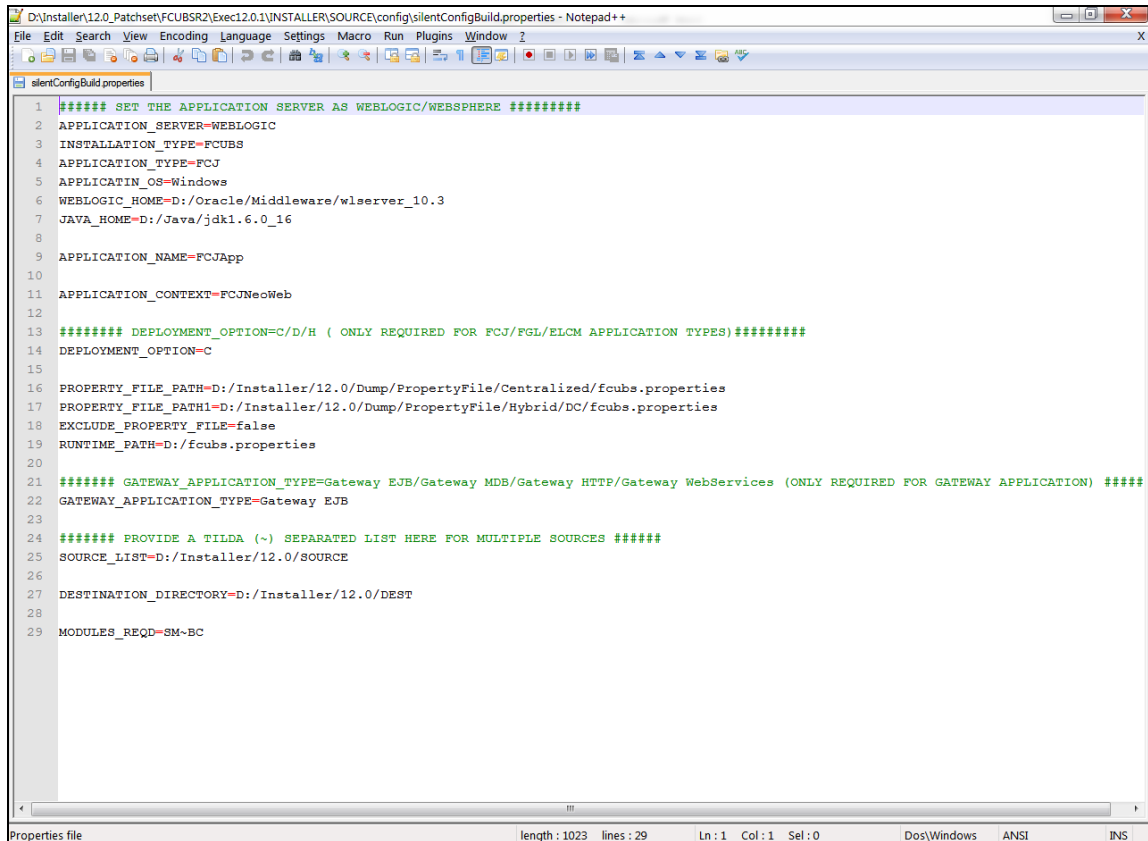
Following features are supported in silent mode:

1. EAR Build (FCIS, Gateway)
2. Deployment (FCIS, Gateway)
3. Data Base Installation
4. User Creation and Report DSN

In order to run Oracle FLEXCUBE Installer in silent mode, you need to modify/edit the following properties files with proper values:

Path: \INSTALLER\SOURCE\config\

- 'silentConfigBuild.properties' to build Application in silent mode
- 'silentConfigDatabase.properties' to setup Database in silent mode
- 'silentUserCreation\_ReportsDSNproperties' to set up user creation and report DSN.
- 'silentAppDeployment.properties' to deploy application on Weblogic Server.
- 'silentWASDeployment.properties' to deploy application on Websphere Server.



```
1 ##### SET THE APPLICATION SERVER AS WEBLOGIC/WEBSPPHERE #####
2 APPLICATION_SERVER=WEBLOGIC
3 INSTALLATION_TYPE=FCUBS
4 APPLICATION_TYPE=FCJ
5 APPLICATION_OS=Windows
6 WEBLOGIC_HOME=D:/Oracle/Middleware/wlserver_10.3
7 JAVA_HOME=D:/Java/jdk1.6.0_16
8
9 APPLICATION_NAME=FCJApp
10
11 APPLICATION_CONTEXT=FCJNeoWeb
12
13 ##### DEPLOYMENT_OPTION=C/D/H ( ONLY REQUIRED FOR FCJ/FGL/ELCM APPLICATION TYPES) #####
14 DEPLOYMENT_OPTION=C
15
16 PROPERTY_FILE_PATH=D:/Installer/12.0/Dump/PropertyFile/Centralized/fcubs.properties
17 PROPERTY_FILE_PATH1=D:/Installer/12.0/Dump/PropertyFile/Hybrid/DC/fcubs.properties
18 EXCLUDE_PROPERTY_FILE=false
19 RUNTIME_PATH=D:/fcubs.properties
20
21 ##### GATEWAY_APPLICATION_TYPE=Gateway EJB/Gateway MDB/Gateway HTTP/Gateway WebServices (ONLY REQUIRED FOR GATEWAY APPLICATION) #####
22 GATEWAY_APPLICATION_TYPE=Gateway EJB
23
24 ##### PROVIDE A TILDA (~) SEPARATED LIST HERE FOR MULTIPLE SOURCES #####
25 SOURCE_LIST=D:/Installer/12.0/SOURCE
26
27 DESTINATION_DIRECTORY=D:/Installer/12.0/DEST
28
29 MODULES_REQD=SM-BC
```

Follow the steps below given to run the installer in silent mode.

## 2.1.1 Running Installer in Silent Mode in Windows

In order to run the installer in silent mode in Windows, follow the steps given below.

1. In command prompt, navigate to the folder where the 'FCUBSInstaller.bat' is located.
2. Type the below command for
  - EAR Build (FCIS, Gateway)  
FCUBSInstaller.bat /s AB <INSTALLER>/config/silentConfigBuild.properties
  - Deployment on Weblogic Server  
FCUBSInstaller.bat /s AD <INSTALLER>/config/silentAppDeployment.properties
  - Deployment on Websphere Server  
FCUBSInstaller.bat /s AD <INSTALLER>/config/silentWASDeployment.properties
  - Data Base Installation  
FCUBSInstaller.bat /s DB <INSTALLER>/config/silentConfigDatabase.properties
  - User Creation  
FCUBSInstaller.bat /s UC <INSTALLER>/config/  
silentUserCreation\_ReportsDSN.properties



- Report DSN  
FCUBSInstaller.bat /s RP <INSTALLER>/config/  
silentUserCreation\_ReportsDSN.properties  
(the command should be given in a single line)
3. Once the installer finishes the task, this log window gets closed automatically.

### 2.1.2 **Running Installer in Silent Mode in Linux**

You can run Oracle FLEXCUBE is Installer in silent mode using the following command:



The command should be given in a single line.

- EAR Build (FCIS, Gateway)  
sh FCUBSInstaller.sh /s AB <INSTALLER>/config/ silentConfigBuild.properties
- Data Base Installation  
sh FCUBSInstaller.sh /s DB <INSTALLER>/config/ silentConfigDatabase.properties
- Deployment on Weblogic Server  
sh FCUBSInstaller.sh /s AD <INSTALLER>/config/silentAppDeployment.properties
- Deployment on Websphere Server  
sh FCUBSInstaller.sh /s AD <INSTALLER>/config/silentWASDeployment.properties
- User Creation  
sh FCUBSInstaller.sh /s UC  
<INSTALLER>/config/silentUserCreation\_ReportsDSN.properties
- Report DSN  
sh FCUBSInstaller.sh /s RP <INSTALLER>/config/  
silentUserCreation\_ReportsDSN.properties



Use the exact folder location instead of '<INSTALLER>' in the command.



Setting up Installer  
[April] [2014]  
Version 12.0.3.0.0

Oracle Financial Services Software Limited  
Oracle Park  
Off Western Express Highway  
Goregaon (East)  
Mumbai, Maharashtra 400 063  
India

Worldwide Inquiries:  
Phone: +91 22 6718 3000  
Fax: +91 22 6718 3001  
[www.oracle.com/financialservices/](http://www.oracle.com/financialservices/)

Copyright © [2007], [2014], Oracle and/or its affiliates. All rights reserved.

Oracle and Java are registered trademarks of Oracle and/or its affiliates. Other names may be trademarks of their respective owners.

**U.S. GOVERNMENT END USERS:** Oracle programs, including any operating system, integrated software, any programs installed on the hardware, and/or documentation, delivered to U.S. Government end users are "commercial computer software" pursuant to the applicable Federal Acquisition Regulation and agency-specific supplemental regulations. As such, use, duplication, disclosure, modification, and adaptation of the programs, including any operating system, integrated software, any programs installed on the hardware, and/or documentation, shall be subject to license terms and license restrictions applicable to the programs. No other rights are granted to the U.S. Government.

This software or hardware is developed for general use in a variety of information management applications. It is not developed or intended for use in any inherently dangerous applications, including applications that may create a risk of personal injury. If you use this software or hardware in dangerous applications, then you shall be responsible to take all appropriate failsafe, backup, redundancy, and other measures to ensure its safe use. Oracle Corporation and its affiliates disclaim any liability for any damages caused by use of this software or hardware in dangerous applications.

This software and related documentation are provided under a license agreement containing restrictions on use and disclosure and are protected by intellectual property laws. Except as expressly permitted in your license agreement or allowed by law, you may not use, copy, reproduce, translate, broadcast, modify, license, transmit, distribute, exhibit, perform, publish or display any part, in any form, or by any means. Reverse engineering, disassembly, or decompilation of this software, unless required by law for interoperability, is prohibited.

The information contained herein is subject to change without notice and is not warranted to be error-free. If you find any errors, please report them to us in writing.

This software or hardware and documentation may provide access to or information on content, products and services from third parties. Oracle Corporation and its affiliates are not responsible for and expressly disclaim all warranties of any kind with respect to third-party content, products, and services. Oracle Corporation and its affiliates will not be responsible for any loss, costs, or damages incurred due to your access to or use of third-party content, products, or services.

