

Oracle
**Primavera Cloud
Integration Overview**

April 2024



Oracle Primavera Cloud Integration Overview

Copyright © 2014, 2024, Oracle and/or its affiliates.

MasterFormat is a trademark of The Construction Specifications Institute, registered in the U.S. and other countries.

Primary Author: Oracle Corporation

Contents

Integration Overview	5
About the Oracle Primavera Cloud Integration App.....	5
About Primavera Gateway Application	5
Setting up an Integration User Account	6
Plans for Integration	7
Planning Integrations within Primavera Cloud User Interface.....	7
Integration with P6 EPPM	8
Connect Directly to P6 EPPM	8
Connect Using Primavera Gateway.....	9
Connect Using Primavera Gateway Cloud Service	10
Connect Using Primavera Gateway On-Premises.....	11
In-App Integration Plan Comparison Chart	12
Planning Integrations External to the Oracle Primavera Cloud User Interface.....	15
Integration Plans Using Primavera Gateway Cloud Service Only	16
Integration Plans Using Primavera Gateway On-Premises Only.....	16
Integration Plan Comparison Chart.....	17
Data Exchange Methods.....	21
Using Generic File Formats.....	21

Integration Overview

Oracle Primavera Cloud supports integration with multiple applications.

Integration with Oracle Primavera Cloud primarily depends on:

- ▶ The applications selected to integrate data with Oracle Primavera Cloud
- ▶ The availability of the selected applications as a cloud service or on-premises
- ▶ The setup and configuration of integration within Oracle Primavera Cloud application or external to the Oracle Primavera Cloud application

This document provides a broad overview of all the integration options available for the applications you choose to integrate with Oracle Primavera Cloud. Use this document as a guide to understand and determine an integration plan that best addresses the needs of your organization.

In This Section

About the Oracle Primavera Cloud Integration App	5
About Primavera Gateway Application	5
Setting up an Integration User Account	6

About the Oracle Primavera Cloud Integration App

Integrations within Oracle Primavera Cloud service is accomplished using the Integration app.

The Integrations app allows you set up connections with:

- ▶ P6 EPPM
Select this option to set up an Oracle Primavera Cloud - P6 EPPM integration only using a direct connection between both application user interfaces. For more details, see **Connect Directly to P6 EPPM** (on page 8).
- ▶ Primavera Gateway
Select this option to set up an Oracle Primavera Cloud integration with applications supported by Primavera Gateway, a middleware application that facilitates integration. For more details, see **About Primavera Gateway Application** (on page 5).
- ▶ Microsoft Project
Select this option to set up an Oracle Primavera Cloud integration to exchange data in XML format by connecting to a Microsoft Project desktop application. For more details, see **Data Exchange Methods** (on page 21).

About Primavera Gateway Application

Primavera Gateway provides seamless integration between your project portfolio management solutions and other Oracle and third-party applications.

Primavera Gateway is an application that facilitates sharing project, resource, and other data between your enterprise application and Primavera applications, enabling you to combine Oracle Primavera's management and scheduling power for projects, portfolios, and resources with other enterprise software.

The following applications are supported in Primavera Gateway:

- ▶ Oracle Primavera Cloud (cloud only)
- ▶ EnterpriseTrack (cloud only)
- ▶ P6 EPPM (cloud and on-premises)
- ▶ Primavera Unifier (cloud and on-premises)
- ▶ Oracle E-Business Suite (on-premises only)
- ▶ Oracle Value Chain Planning (on-premises only)

Setting up an Integration User Account

An integration user account is a generic user account that is used to manage integrations between Oracle Primavera Cloud and other applications. Based on the needs of your organization, you can have a dedicated integration user or a tenant administrator who manages integrations with an alias account. Creating an integration user is optional but recommended to keep track of the data modified through integrations and to prevent integration failures upon inadvertent changes to the shared user account. Use your identity domain to create the integration account and later associate this account with an owning company in Primavera Cloud.

To create an integration user account:

- 1) Log in to your identity domain. In the **Admin Console**, select **Users**, and then select **Add Users**.
- 2) In the **Add User** dialog box, enter the **First Name**, **Last Name**, and **User Name / Email** for the integration user account.

Note: If an existing user manages integrations, then provide an alias email address in the **User Name / Email** field.

- 3) Ensure to check the **Use the email address as the user name** check box.
- 4) Select **Finish**.
- 5) On the **Account Information** page, provide a valid email address in the **Email** and **Recovery Email** fields.
- 6) In Primavera Cloud, add this integration user account to the owning company and assign it to the Application Administrator user type. See **Add a User** (see Add a User - https://docs.oracle.com/cd/E80480_01/English/admin/app_admin_guide/90890.htm) for more information.

Tips

The integration user account should only be invited to the owning tenant.

Plans for Integration

This chapter provides an overview of the integration plans available with Oracle Primavera Cloud and applications supported within each integration plan.

Primavera Cloud integration plans can be categorized into the following main categories:

- ▶ Integrations within the Primavera Cloud user interface
- ▶ Integrations external to the Primavera Cloud user interface

The following sections describes variations of Oracle Primavera Cloud integration plans within each category. Use this information to determine the plan best suited for your organization.

In This Section

Planning Integrations within Primavera Cloud User Interface	7
Planning Integrations External to the Oracle Primavera Cloud User Interface	15

Planning Integrations within Primavera Cloud User Interface

The **Integration** app within the Primavera Cloud user interface is used to set up connections with:

- ▶ P6 EPPM
Select this option to set up a *dedicated* connection to P6 EPPM.
Use this option to set up only an Oracle Primavera Cloud - P6 EPPM integration from within Primavera Cloud user interface.
For more details, see **Connect Directly to P6 EPPM** (on page 8).
- ▶ Primavera Gateway
Select this option to set up a connection to Primavera Gateway from within Primavera Cloud user interface.
Use this option to set up an Oracle Primavera Cloud integration with *any* applications supported by Primavera Gateway.

Note: Primavera Gateway can be a cloud service or an on-premises installation. For more details, see **Connect Using Primavera Gateway** (on page 9).

- ▶ Microsoft Project
Select this option to set up a connection to Microsoft Project desktop application from within Primavera Cloud user interface.
Use this option to send or receive Oracle Primavera Cloud data in XML format. For more details, see **Using Generic File Formats** (on page 21).

To learn about setting up any of these integrations, see Integration Overview in the *Oracle Primavera Cloud Help*.

Integration with P6 EPPM

In Oracle Primavera Cloud, the following options are available to plan an integration with P6 EPPM:

- ▶ **Connect Directly to P6 EPPM** (on page 8) or
- ▶ **Connect Using Primavera Gateway** (on page 9)

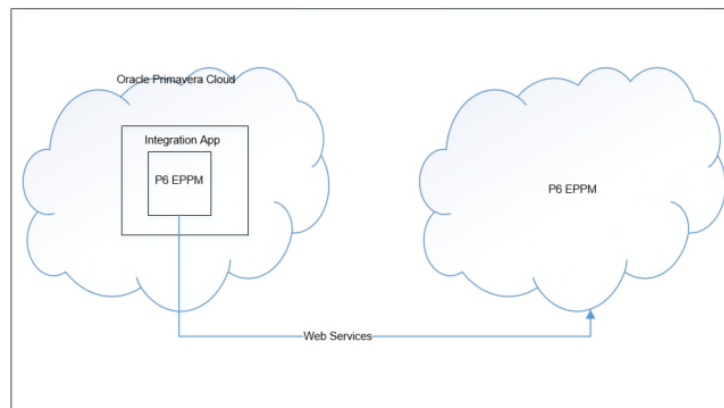
Note: Primavera Cloud is available as a cloud service only.

Connect Directly to P6 EPPM

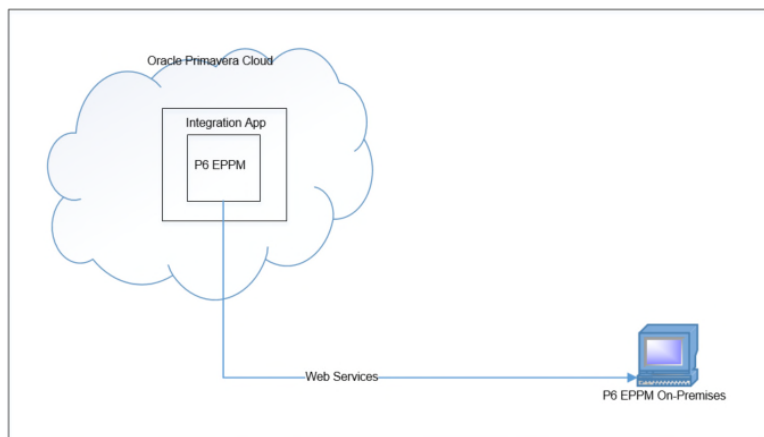
Since P6 EPPM is available as a cloud service or an on-premises application, the following options are available to set up a direct connection between each application's interface using REST API. See Integrate P6 EPPM in the *Oracle Primavera Cloud Help* for instructions on how to do this.

Note: If the P6 EPPM environment is hosted on-premises, the P6 EPPM server name and the port used must be listed on the allowlist on the Oracle Cloud to open up a connection with Primavera Cloud. To do this, submit a service request through My Oracle Support.

Option 1: Direct Connection between Oracle Primavera Cloud and P6 EPPM Cloud Services



Option 2: Direct Connection between Oracle Primavera Cloud Service and P6 EPPM On-Premises



Connect Using Primavera Gateway

Primavera Gateway cloud service or on-premises has provision for setting up additional Primavera Cloud integrations with all the applications supported by Gateway. See *Integrate Primavera Gateway* in the *Oracle Primavera Cloud Help* for instructions on how to set up Gateway integrations.

Note: If the Primavera Gateway environment is hosted on-premises, the Primavera Gateway server name and the port used must be listed on the allowlist on the Oracle Cloud to open up a connection with Primavera Cloud. To do this, submit a service request through My Oracle Support.

Primavera Cloud Integrations Using Gateway Cloud Service

Primavera Gateway cloud service supports the following applications:

- ▶ Primavera Cloud
- ▶ P6 EPPM
- ▶ Unifier
- ▶ EnterpriseTrack
- ▶ File Provider

A Primavera Cloud integration with any of the above applications can be setup from within Primavera Cloud by using Primavera Gateway cloud service. For example, use Primavera Gateway cloud service to set up Primavera Cloud - Unifier integration from within the Primavera Cloud user interface. For more details, see ***Connect Using Primavera Gateway Cloud Service*** (on page 10).

Primavera Cloud Integrations Using Gateway

Primavera Gateway on-premises supports the following applications:

- ▶ Primavera Cloud
- ▶ P6 EPPM

- ▶ Unifier
- ▶ EnterpriseTrack
- ▶ File Provider
- ▶ E-Business Suite (third party application)
- ▶ Value Chain Planning (third party application)
- ▶ Microsoft Project (third party application)

A Primavera Cloud integration with any of the above applications can be setup from within Primavera Cloud by connecting to Primavera Gateway on-premises. For example, use Primavera Gateway on-premises to set up Primavera Cloud - E-Business Suite integration from within the Primavera Cloud user interface. For more details, see **Connect Using Primavera Gateway On-Premises** (on page 11).

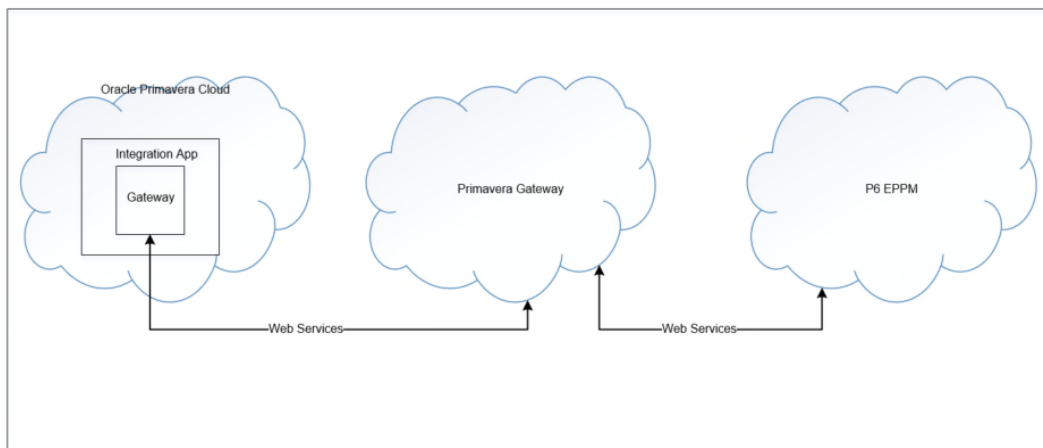
Connect Using Primavera Gateway Cloud Service

Set up Oracle Primavera Cloud - P6 EPPM integration by connecting to Primavera Gateway cloud service from each application for the following combinations:

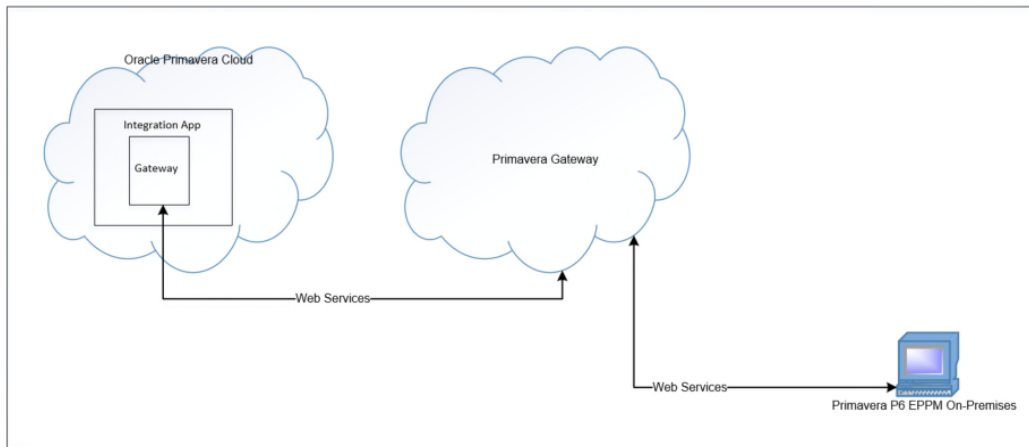
- ▶ Oracle Primavera Cloud, Primavera Gateway, and P6 EPPM are all cloud services (Option 3)
- ▶ Oracle Primavera Cloud and Primavera Gateway are cloud services, whereas P6 EPPM is on-premises (Option 4)

Note: Primavera Gateway *cloud service* is used as the middleware application to exchange data between Oracle Primavera Cloud and P6 EPPM instead of the P6 EPPM connection described previously.

Option 3: Primavera Gateway Cloud Service Connection in Oracle Primavera Cloud and P6 EPPM Cloud Services



Option 4: Primavera Gateway Cloud Service Connection in Oracle Primavera Cloud Service and P6 EPPM On-Premises



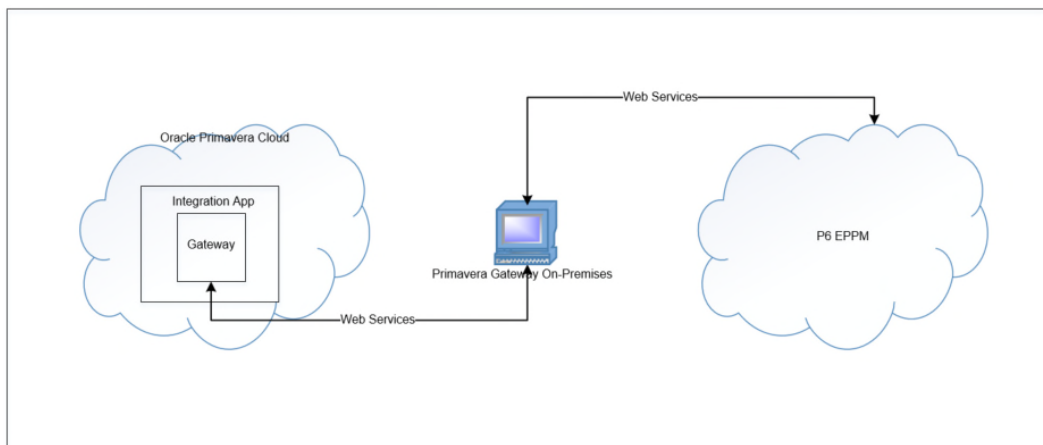
Connect Using Primavera Gateway On-Premises

Set up Oracle Primavera Cloud - P6 EPPM integration by connecting to Primavera Gateway on-premises from each application for the following combinations:

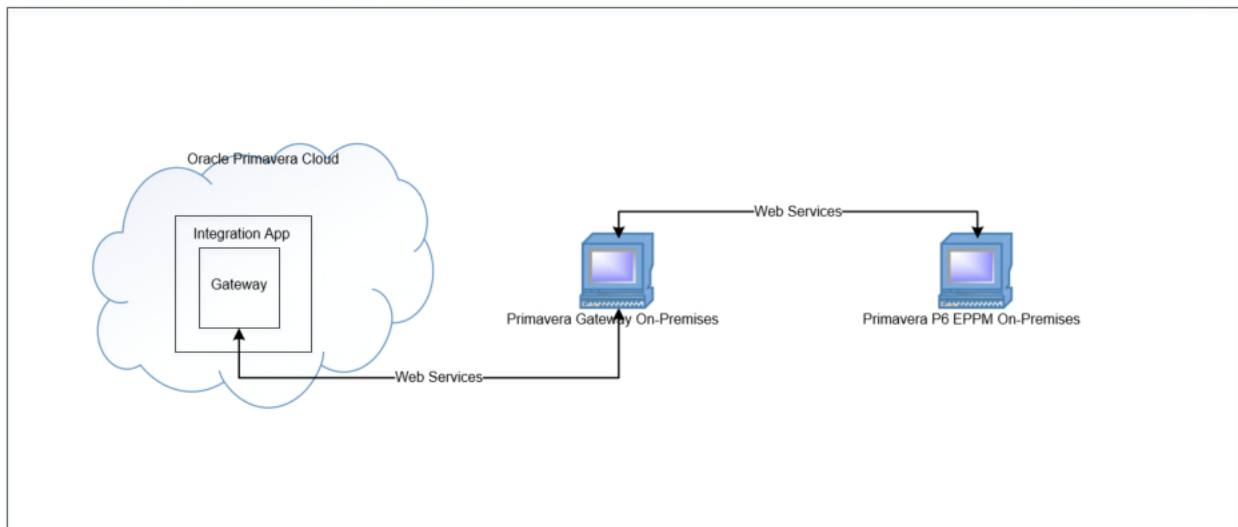
- ▶ Primavera Gateway is on-premises whereas Oracle Primavera Cloud and P6 EPPM are cloud services (Option 5)
- ▶ Primavera Gateway and P6 EPPM are on-premises whereas Oracle Primavera Cloud is a cloud service (Option 6)

Note: Primavera Gateway *on-premises* is used as the middleware application to exchange data between Oracle Primavera Cloud and P6 EPPM instead of the direct connection described previously.

Option 5: Primavera Gateway On-Premises Connected to Oracle Primavera Cloud and P6 EPPM Cloud Services



Option 6: Primavera Gateway On-Premises Connected to Oracle Primavera Cloud Service and P6 EPPM On-Premises



In-App Integration Plan Comparison Chart

The following table compares the integration plans when set up from within the Primavera Cloud user interface.

Integration Plan Features	Options 1 & 2	Options 3 & 4	Options 5 & 6
Integration Plan Description	A direct connection between Primavera Cloud and P6 EPPM user interfaces to exchange data with P6 EPPM only.	A connection to Gateway cloud service set up in Primavera Cloud and P6 EPPM to exchange data. Note: Can be used to support for future integration with other products supported by Gateway.	A Gateway on-premises connection set up in Primavera Cloud and P6 EPPM to exchange data. Note: Can be used to support for future integration with other products supported by Gateway.

Integration Plan Features	Options 1 & 2	Options 3 & 4	Options 5 & 6
Goal	To set up a dedicated direct connection between each application's user interface using out-of-the-box configurations with limited ability to customize data flows.	To use Gateway cloud service to set up an integration between Primavera Cloud and P6 EPPM applications using out-of-the-box configurations with the ability to customize data flows as necessary.	To use Gateway on-premises to set up an integration between Primavera Cloud and P6 EPPM applications with the possibility to extend support for future integration with other products supported by Gateway.
Required Licensed Applications	<ul style="list-style-type: none"> ▶ Primavera Cloud service ▶ P6 EPPM cloud service or on-premises See Connect Directly to P6 EPPM (on page 8)	<ul style="list-style-type: none"> ▶ Primavera Cloud service ▶ P6 EPPM cloud service or on-premises ▶ Gateway cloud service See Connect Using Primavera Gateway Cloud Service (on page 10).	<ul style="list-style-type: none"> ▶ Primavera Cloud service ▶ P6 EPPM cloud service or on-premises ▶ Gateway on-premises See Connect Using Primavera Gateway On-Premises (on page 11).
REST API URLs	Dedicated connection to P6 EPPM from Primavera Cloud application. Dedicated connection to Primavera Cloud from P6 EPPM application.	Connect using Gateway REST API from Primavera Cloud to Gateway cloud service.	Connect using Gateway REST API from Primavera Cloud to Gateway on-premises.
Deployment Setup Location	Configured in Primavera Cloud. Use the Integration App to connect to P6 EPPM. In P6 EPPM, set up a deployment to Primavera Cloud.	Configured in Primavera Cloud. Use the Integration app to connect to Gateway cloud service.	Configured in Primavera Cloud. Use the Integration app to connect to Gateway on-premises.

Integration Plan Features	Options 1 & 2	Options 3 & 4	Options 5 & 6
Exchange data with	P6 EPPM only	Any application supported by Gateway cloud service. These include: <ul style="list-style-type: none"> ▶ P6 EPPM on-premises or cloud service ▶ Unifier on-premises or cloud service ▶ EnterpriseTrack cloud service ▶ File Provider 	Any application supported by Gateway on-premises. These include: <ul style="list-style-type: none"> ▶ P6 EPPM on-premises or cloud service ▶ Unifier on-premises or cloud service ▶ EnterpriseTrack (cloud only) ▶ File Provider ▶ MSP Provider ▶ E-Business Suite (EBS) on-premises only ▶ Value Chain Planning (VCP) on-premises only

Integration Plan Features	Options 1 & 2	Options 3 & 4	Options 5 & 6
Supported Gateway functionality	None	Gateway cloud service functionality only. These include: <ul style="list-style-type: none"> ▶ Automatic upgrade to the most recent Gateway cloud version ▶ Add new fields to supported flows in Primavera Cloud ▶ No support for adding or editing cross-references, field mapping templates, and modifying data dictionaries ▶ No built-in support for third-party applications ▶ Need to contact Oracle Support for any modifications 	Includes complete Gateway on-premises functionality. These include: <ul style="list-style-type: none"> ▶ Provides complete control in determining what data can be integrated in flows between applications ▶ Add new fields and cross-references to data dictionaries for integration ▶ Add or edit field mapping templates and business flows to support data exchange ▶ Customize objects, fields, and mapping templates ▶ Integrate with currently supported third-party applications ▶ Ability to build and add new providers in Gateway to support integration with additional third-party products

Planning Integrations External to the Oracle Primavera Cloud User Interface

Primavera Cloud integrations can be set up by simply using the Primavera Gateway user interface to connect the two applications you want to integrate. In Primavera Gateway, connections to each application are established by setting up Deployments.

For example, for a Primavera Cloud - P6 EPPM integration, set up the following:

- ▶ In Primavera Gateway, set up a Primavera Cloud deployment and a P6 EPPM deployment
- ▶ In P6 EPPM, connect to Gateway using the API URL.
- ▶ In Oracle Primavera Cloud, connect to Gateway using the API URL.

Note: The integration plans outlined in this section do not use the **Integration** app in Oracle Primavera Cloud.

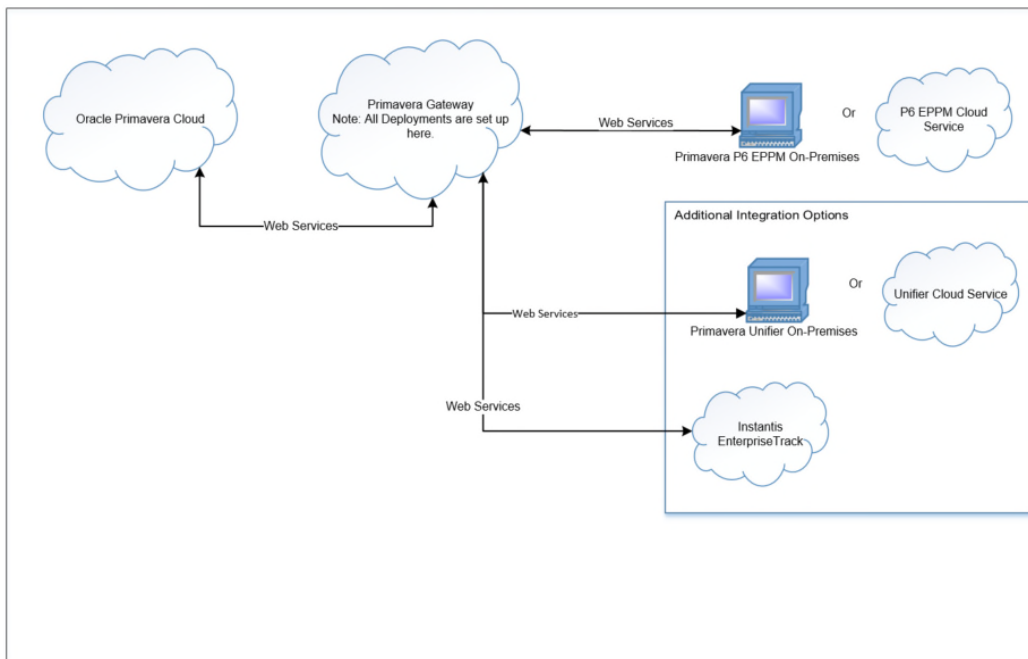
Integration Plans Using Primavera Gateway Cloud Service Only

The following Primavera Cloud - P6 EPPM integration plan is available with Primavera Gateway cloud service.

Note: This plan does not use the Integration app in Primavera Cloud.

Select this plan to integrate Primavera Cloud data with any applications supported by Primavera Gateway cloud service.

Option 7: Integration Plans Using Primavera Gateway Cloud Service



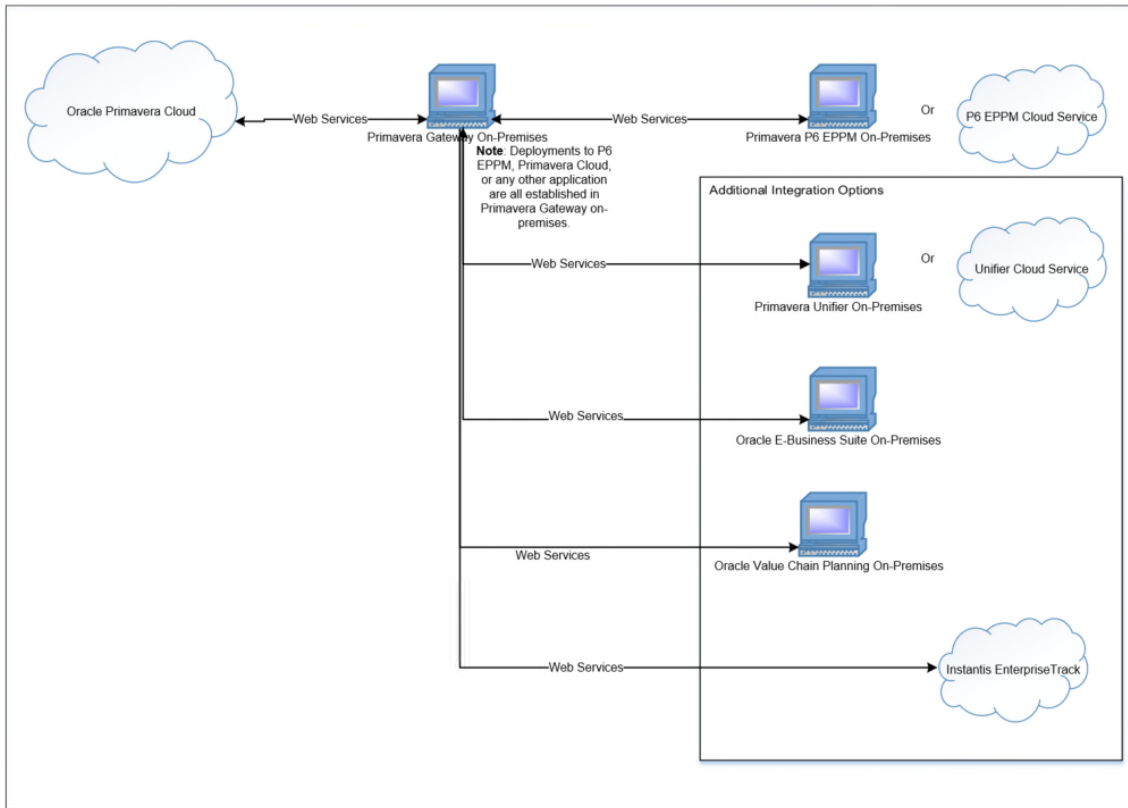
Integration Plans Using Primavera Gateway On-Premises Only

The following Primavera Cloud - P6 EPPM integration plan is available with Primavera Gateway on-premises installation.

Note: This plan does not use the Integration app in Primavera Cloud.

In this plan, Gateway is installed externally as a standalone on-premises application. Select this plan to integrate Primavera Cloud data with any applications supported by Primavera Gateway on-premises including third-party applications such as Oracle E-business Suite (EBS) or Oracle Value Chain Planning (VCP).

Option 8: Integration Plans Using Primavera Gateway On-Premises



Integration Plan Comparison Chart

The following table compares the integration plans when set up from Gateway Cloud Service or on-premises installations.

Integration Plan Features	Option 7 (Using Gateway Cloud Service)	Option 8 (Using Gateway On-Premises)
Integration Plan Description	<p>A connection to Gateway cloud service set up in Primavera Cloud and P6 EPPM to exchange data.</p> <p>Note: This plan can be used to support for future integration with other products supported by Gateway.</p>	<p>A Gateway on-premises connection set up in Primavera Cloud and P6 EPPM to exchange data.</p> <p>Note: This plan can be used to support for future integration with other products supported by Gateway.</p>

Integration Plan Features	Option 7 (Using Gateway Cloud Service)	Option 8 (Using Gateway On-Premises)
Goal	To use Gateway cloud service to set up integration between Primavera Cloud and P6 EPPM applications with the possibility to extend support for future integration with other products supported by Gateway.	To use Gateway on-premises to set up integration between Primavera Cloud and P6 EPPM applications with the possibility to extend support for future integration with other products supported by Gateway.
Required Licensed Applications	<ul style="list-style-type: none"> ▶ Primavera Cloud service ▶ P6 EPPM cloud service or on-premises ▶ Gateway cloud service See Integration Plans Using Primavera Gateway Cloud Service Only (on page 16) (Option 7).	<ul style="list-style-type: none"> ▶ Primavera Cloud service ▶ P6 EPPM cloud service or on-premises ▶ Gateway on-premises See Integration Plans Using Primavera Gateway On-Premises Only (on page 16) (Option 8).
REST API URLs	Connect using Gateway REST API from each application you choose to integrate with using Gateway cloud service.	Connect using Gateway REST API from each application you choose to integrate with using Gateway on-premises.
Deployment Setup Location	In Primavera Cloud use the Integration app to connect to P6 EPPM deployment.	In Primavera Cloud use the Integration app to connect to Gateway on-premises.
Additional Integration Options	Any application supported by Gateway cloud service. These include: <ul style="list-style-type: none"> ▶ P6 EPPM (cloud or on-premises) ▶ Unifier (cloud or on-premises) ▶ EnterpriseTrack (cloud only) ▶ File Provider 	Any application supported by Gateway on-premises. These include: <ul style="list-style-type: none"> ▶ P6 EPPM (cloud or on-premises) ▶ Unifier (cloud or on-premises) ▶ EnterpriseTrack (cloud only) ▶ File Provider ▶ MSP Provider (on-premises only) ▶ E-Business Suite (EBS) (on-premises only) ▶ Value Chain Planning (VCP) (on-premises only)

Integration Plan Features	Option 7 (Using Gateway Cloud Service)	Option 8 (Using Gateway On-Premises)
Supported Gateway functionality	<p>Gateway cloud service functionality only.</p> <p>These include:</p> <ul style="list-style-type: none"> ▶ Automatic upgrade to the most recent Gateway cloud version ▶ Add new fields to supported flows in Primavera Cloud ▶ No support for adding or editing cross-references, field mapping templates, and modifying data dictionaries ▶ No built-in support for third-party applications ▶ Contact Oracle Support for any modifications 	<p>Includes complete Gateway on-premises functionality.</p> <p>These include:</p> <ul style="list-style-type: none"> ▶ Provides complete control in determining what data can be integrated in flows between applications ▶ Add new fields, and cross-references to data dictionaries for integration ▶ Add or edit field mapping templates and business flows to support data exchange ▶ Customize objects, fields, and mapping templates ▶ Integrate with currently supported third-party applications ▶ Ability to build and add new providers in Gateway to support integration with additional third-party products

Data Exchange Methods

To accommodate and extend integrations beyond the applications supported in Primavera Gateway, generic file formats are supported to facilitate data exchange between any two applications.

Note: Explore this option if you want to plan a Primavera Cloud integration with any third-party applications that are not supported by default in Primavera Gateway.

In This Section

Using Generic File Formats	21
----------------------------------	----

Using Generic File Formats

Data can be exchanged between any two applications using Primavera Gateway by using generic file formats. The following file formats are supported:

- ▶ XML
- ▶ XLS or XLSX
- ▶ CSV

To exchange Primavera Cloud data using any of the file formats, the following options are available:

Data Exchange Using XML File Format

The following methods are available to send or receive data as XML files using Primavera Cloud:

- ▶ Using Primavera Cloud User Interface
If you choose this method:
 - a. Select the **Integration** app in Primavera Cloud.
 - b. Set up a connection to **Microsoft Project** Desktop application or **Gateway** application.

Note: The **Microsoft Project** desktop application allows you to perform a one-time data *import* for each project only. The import is not bi-directional.

- ▶ Using Gateway User Interface (on-premises)
Data can be sent or received in XML format by using either **MSP** Provider or **File** Provider.
If you choose to use MSP Provider:
 - a. Download and install MSP provider.

- b. Set up a connection in Gateway to **MSP** provider to connect to a Microsoft Project desktop application.

If you choose to use **File** Provider to send or receive data in XML format, set up a connection in Gateway to **File** provider.

Data Exchange Using XLS, XLSX, or CSV Files

The following methods are available to send or receive data as XLS, XLSX, or CSV files:

- ▶ Using Primavera Cloud User Interface

If you choose this method:

- a. Select the **Integration** app in Primavera Cloud
- b. Set up a connection to **Gateway** application.

- ▶ Using Gateway User Interface (on-premises)

If you choose to use Primavera Gateway user interface to facilitate integrations with Primavera Cloud data:

- a. Set up a connection in Gateway to **File** provider.
- b. Set up a connection in Gateway to **Primavera Cloud** provider.