

Oracle® Hospitality Cruise SilverWhere

GDF Installation Guide for 9.0.5.6

Release 8.0

April 2016

Copyright © 2014, 2016, Oracle and/or its affiliates. All rights reserved.

This software and related documentation are provided under a license agreement containing restrictions on use and disclosure and are protected by intellectual property laws. Except as expressly permitted in your license agreement or allowed by law, you may not use, copy, reproduce, translate, broadcast, modify, license, transmit, distribute, exhibit, perform, publish, or display any part, in any form, or by any means. Reverse engineering, disassembly, or decompilation of this software, unless required by law for interoperability, is prohibited.

The information contained herein is subject to change without notice and is not warranted to be error-free. If you find any errors, please report them to us in writing.

If this software or related documentation is delivered to the U.S. Government or anyone licensing it on behalf of the U.S. Government, then the following notice is applicable:

U.S. GOVERNMENT END USERS: Oracle programs, including any operating system, integrated software, any programs installed on the hardware, and/or documentation, delivered to U.S. Government end users are "commercial computer software" pursuant to the applicable Federal Acquisition Regulation and agency-specific supplemental regulations. As such, use, duplication, disclosure, modification, and adaptation of the programs, including any operating system, integrated software, any programs installed on the hardware, and/or documentation, shall be subject to license terms and license restrictions applicable to the programs. No other rights are granted to the U.S. Government.

This software or hardware is developed for general use in a variety of information management applications. It is not developed or intended for use in any inherently dangerous applications, including applications that may create a risk of personal injury. If you use this software or hardware in dangerous applications, then you shall be responsible to take all appropriate fail-safe, backup, redundancy, and other measures to ensure its safe use. Oracle Corporation and its affiliates disclaim any liability for any damages caused by use of this software or hardware in dangerous applications.

Oracle and Java are registered trademarks of Oracle and/or its affiliates. Other names may be trademarks of their respective owners.

Intel and Intel Xeon are trademarks or registered trademarks of Intel Corporation. All SPARC trademarks are used under license and are trademarks or registered trademarks of SPARC International, Inc. AMD, Opteron, the AMD logo, and the AMD Opteron logo are trademarks or registered trademarks of Advanced Micro Devices. UNIX is a registered trademark of The Open Group.

This software or hardware and documentation may provide access to or information on content, products, and services from third parties. Oracle Corporation and its affiliates are not responsible for and expressly disclaim all warranties of any kind with respect to third-party content, products, and services. Oracle Corporation and its affiliates will not be responsible for any loss, costs, or damages incurred due to your access to or use of third-party content, products, or services.

Contents

Preface	4
Audience	4
Customer Support.....	4
Documentation.....	4
Revision History.....	4
1 Prerequisites	5
General Information	5
2 Installation Process.....	6
How to install	6
3 Configuration.....	7
First Launch	7
4 Daily Operation	11
Show Logs	11

Preface

Audience

This document is designed for technical support personnel on customer site in order to setup and configure the GDF Interface for different tasks.

Customer Support

When contacting Customer Support, please provide the following:

- Product version and program/module name
- Functional and technical description of the problem (include business impact)
- Detailed step-by-step instructions to re-create
- Exact error message received
- Screen shots of each step you take

Documentation

Oracle Hospitality product documentation is available on the Oracle Help Center at <http://docs.oracle.com>

Revision History

Date	Description of Change
February 10, 2016	<ul style="list-style-type: none">• Initial publication
March 24, 2016	<ul style="list-style-type: none">• Updated for release

1 Prerequisites

General Information

“Run as Administrator” is mandatory for all steps described in this document.

Get the latest version of “SilverWhere GDF Interface” from your Oracle Hospitality Cruise Resource or from the Oracle Download Center.

The GDF Interface Configurator is used to setup multiple different services for various tasks.

Make sure you have all necessary passwords and connection details ready before proceeding with the installation.

An Oracle Client installation and a configured TNSNames.ora is required on the machine running the SW GDF Interface.

2 Installation Process

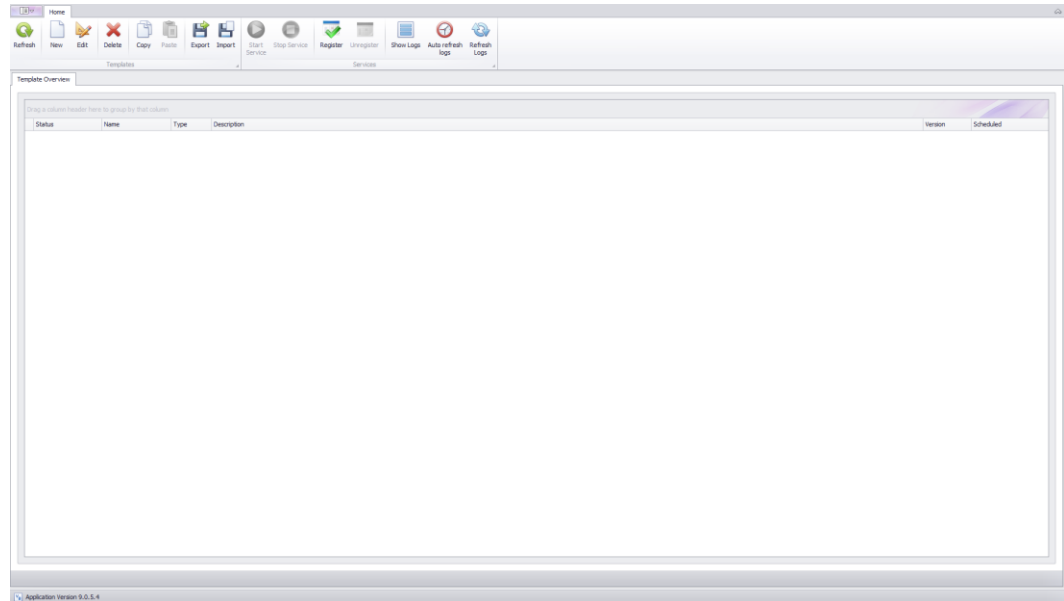
How to install

- 1) Login to the server machine you want to install the new GDF Interface version 9.0.5.6.
- 2) If an older version of the GDF is already installed, ensure all Service from all existing templates are stopped and unregister the existing Templates.
- 3) Uninstall the GDF Interface in PROGRAMS and FEATURES
- 4) Navigate to the folder you saved the new installation executable.
- 5) Run the setup executable (Fidelio GDF Interface 9.0.5.6 Setup.exe) as an administrator.
- 6) Follow the steps provided during the installation process.
- 7) After finishing the installation process, open the application folder and create a shortcut on the desktop for the "GDFConfigurator.exe".

3 Configuration

First Launch

Launching the “GDFConfigurator” for the first time will bring up a window as below:

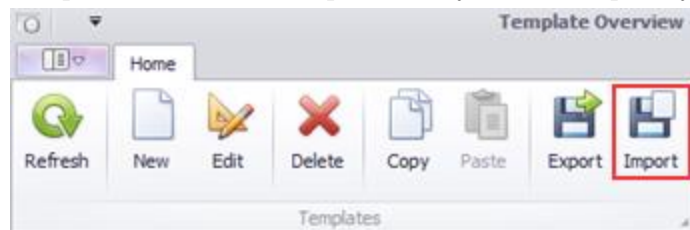


Import Template

Different 3rd Party systems using different templates.

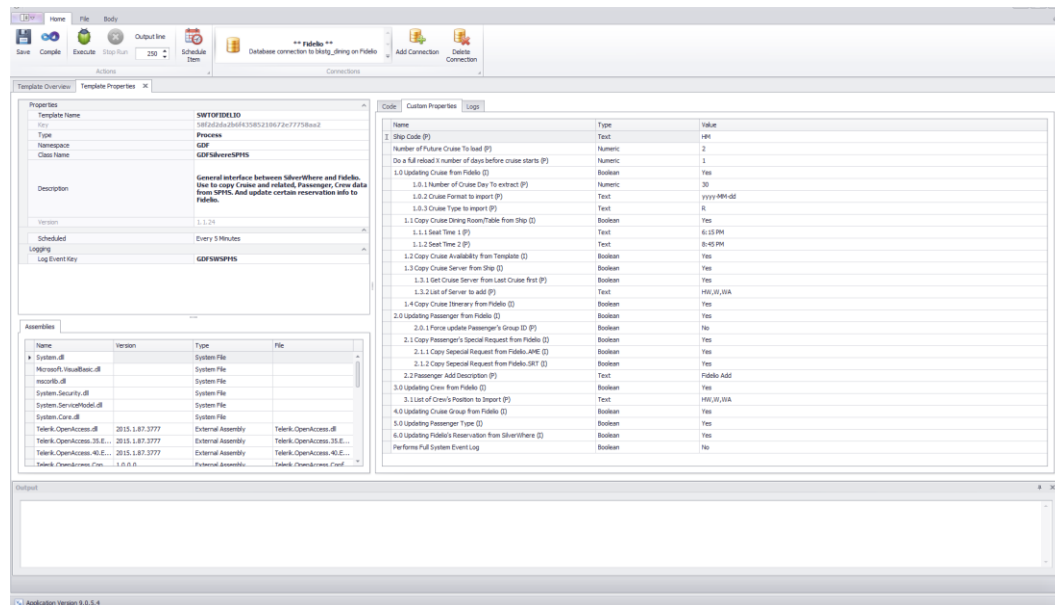
Click on “Import” and select the template file (*.GDT) you want to import.

Templates are written and provided by Oracle Hospitality Cruise.



Configure Template

When the template is imported successfully the TEMPLATE PROPERTIES tab will open up automatically to configure the template accordingly in CUTOM PROPERTIES tab.

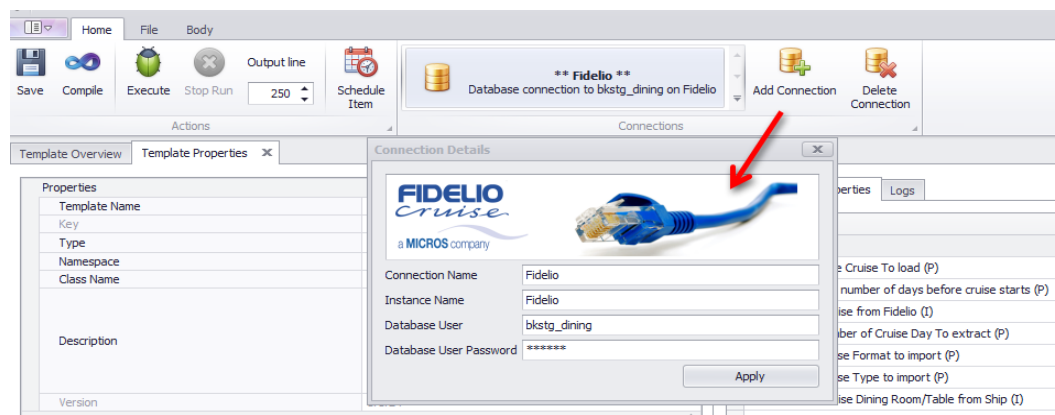


Check all parameters and adjust values accordingly to your environment.

Please note: Different templates may have different parameters. If you need detailed information for a special template, please see your detailed documentation for that template or contact your Oracle Hospitality Resource.

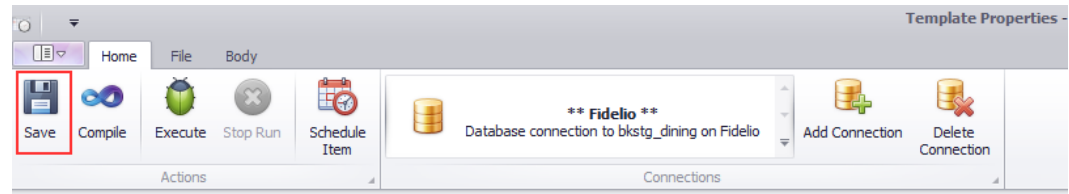
Database connection

Click on “Add Connection” to enter connection details for the database connection.



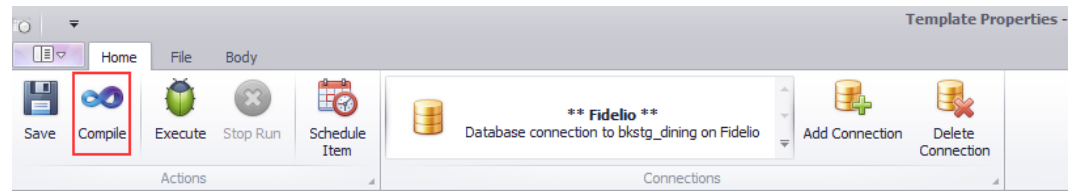
Save changes

Click on “Save” in order to save your changes to the template



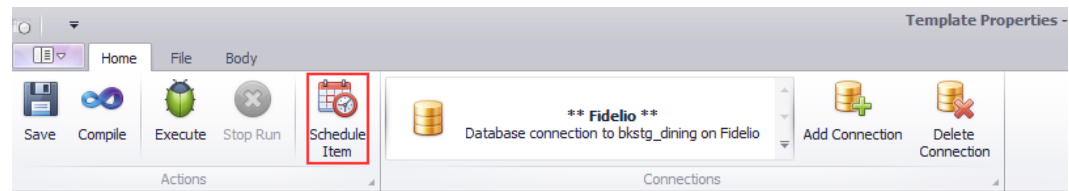
Compile

Click on “Compile” after you saved your changes.



Schedule Item

Click on “Schedule Item” if you want to change the predefined time the template is executed.



Save changes again and Close the “GDFConfigurator” after start it again as RUN as ADMIN

Register template to run as a service

Select template from overview and click on “Register”.

- Make sure “GDFConfigurator.exe” is run as administrator.

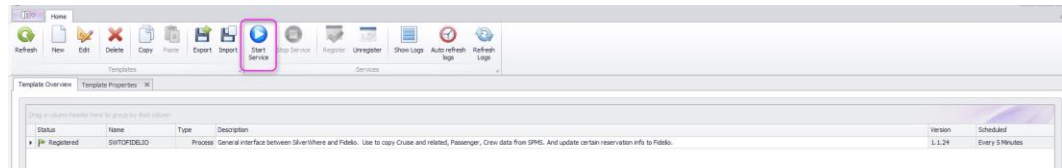


When the Template is registered successfully the STAUTS will change accordingly from 'DISABLED' to REGISTERED



Start Service

Select desired template from overview and click “Start Service”

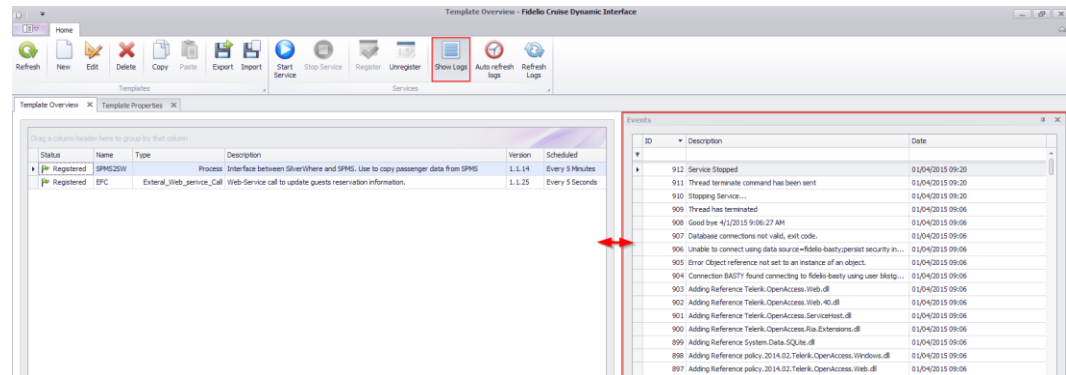


4 Daily Operation

Show Logs

Select a template from overview and click “Show Logs”.

The screen will be split up and show the log for the selected template.



Note:

In order to see the full description, you can resize both windows via drag and drop on the divider between both windows. (Red arrow) In addition, you can adjust the column size for each field in the shown table.

Auto refresh logs

Click this button to auto refresh the logs.

Refresh

Click this button to manually update the shown events to the latest ones from log file.