

# **Oracle® Retail Financial Integration**

Installation Guide

Release 14.0

E49438-01

December 2013

Copyright © 2013, Oracle and/or its affiliates. All rights reserved.

Primary Author: Vignesh Babu

Contributors: Jegadesan Ramaswamy, Anand Balasubramanian

This software and related documentation are provided under a license agreement containing restrictions on use and disclosure and are protected by intellectual property laws. Except as expressly permitted in your license agreement or allowed by law, you may not use, copy, reproduce, translate, broadcast, modify, license, transmit, distribute, exhibit, perform, publish, or display any part, in any form, or by any means. Reverse engineering, disassembly, or decompilation of this software, unless required by law for interoperability, is prohibited.

The information contained herein is subject to change without notice and is not warranted to be error-free. If you find any errors, please report them to us in writing.

If this software or related documentation is delivered to the U.S. Government or anyone licensing it on behalf of the U.S. Government, the following notice is applicable:

U.S. GOVERNMENT END USERS: Oracle programs, including any operating system, integrated software, any programs installed on the hardware, and/or documentation, delivered to U.S. Government end users are "commercial computer software" pursuant to the applicable Federal Acquisition Regulation and agency-specific supplemental regulations. As such, use, duplication, disclosure, modification, and adaptation of the programs, including any operating system, integrated software, any programs installed on the hardware, and/or documentation, shall be subject to license terms and license restrictions applicable to the programs. No other rights are granted to the U.S. Government.

This software or hardware is developed for general use in a variety of information management applications. It is not developed or intended for use in any inherently dangerous applications, including applications that may create a risk of personal injury. If you use this software or hardware in dangerous applications, then you shall be responsible to take all appropriate fail-safe, backup, redundancy, and other measures to ensure its safe use. Oracle Corporation and its affiliates disclaim any liability for any damages caused by use of this software or hardware in dangerous applications.

Oracle and Java are registered trademarks of Oracle and/or its affiliates. Other names may be trademarks of their respective owners.

Intel and Intel Xeon are trademarks or registered trademarks of Intel Corporation. All SPARC trademarks are used under license and are trademarks or registered trademarks of SPARC International, Inc. AMD, Opteron, the AMD logo, and the AMD Opteron logo are trademarks or registered trademarks of Advanced Micro Devices. UNIX is a registered trademark of The Open Group.

This software or hardware and documentation may provide access to or information on content, products, and services from third parties. Oracle Corporation and its affiliates are not responsible for and expressly disclaim all warranties of any kind with respect to third-party content, products, and services. Oracle Corporation and its affiliates will not be responsible for any loss, costs, or damages incurred due to your access to or use of third-party content, products, or services.

---

## Value-Added Reseller (VAR) Language

### Oracle Retail VAR Applications

The following restrictions and provisions only apply to the programs referred to in this section and licensed to you. You acknowledge that the programs may contain third party software (VAR applications) licensed to Oracle. Depending upon your product and its version number, the VAR applications may include:

(i) the **MicroStrategy** Components developed and licensed by MicroStrategy Services Corporation (MicroStrategy) of McLean, Virginia to Oracle and imbedded in the MicroStrategy for Oracle Retail Data Warehouse and MicroStrategy for Oracle Retail Planning & Optimization applications.

(ii) the **Wavelink** component developed and licensed by Wavelink Corporation (Wavelink) of Kirkland, Washington, to Oracle and imbedded in Oracle Retail Mobile Store Inventory Management.

(iii) the software component known as **Access Via**™ licensed by Access Via of Seattle, Washington, and imbedded in Oracle Retail Signs and Oracle Retail Labels and Tags.

(iv) the software component known as **Adobe Flex**™ licensed by Adobe Systems Incorporated of San Jose, California, and imbedded in Oracle Retail Promotion Planning & Optimization application.

You acknowledge and confirm that Oracle grants you use of only the object code of the VAR Applications. Oracle will not deliver source code to the VAR Applications to you. Notwithstanding any other term or condition of the agreement and this ordering document, you shall not cause or permit alteration of any VAR Applications. For purposes of this section, "alteration" refers to all alterations, translations, upgrades, enhancements, customizations or modifications of all or any portion of the VAR Applications including all reconfigurations, reassembly or reverse assembly, re-engineering or reverse engineering and recompilations or reverse compilations of the VAR Applications or any derivatives of the VAR Applications. You acknowledge that it shall be a breach of the agreement to utilize the relationship, and/or confidential information of the VAR Applications for purposes of competitive discovery.

The VAR Applications contain trade secrets of Oracle and Oracle's licensors and Customer shall not attempt, cause, or permit the alteration, decompilation, reverse engineering, disassembly or other reduction of the VAR Applications to a human perceivable form. Oracle reserves the right to replace, with functional equivalent software, any of the VAR Applications in future releases of the applicable program.



---

---

# Contents

<b>Send Us Your Comments</b> .....	<b>vii</b>
<b>Preface</b> .....	<b>ix</b>
Audience .....	ix
Documentation Accessibility.....	ix
Related Documents.....	ix
Customer Support.....	ix
Review Patch Documentation .....	x
Improved Process for Oracle Retail Documentation Corrections .....	x
Oracle Retail Documentation on the Oracle Technology Network.....	x
Conventions.....	x
<b>1 Preinstallation Tasks</b> .....	<b>1</b>
Check Supported Database Server Requirements.....	1
Check Supported ODI Requirements.....	2
Check Supported Application Server Requirements .....	3
Check Supported Client PC and Web Browser Requirements .....	4
Supported Oracle Retail Products .....	4
UNIX User Account Privileges to Install the Software .....	4
Supported Oracle Applications.....	4
<b>2 ORFI Installation</b> .....	<b>5</b>
<b>3 ORFI Database Installation Tasks</b> .....	<b>7</b>
Expand the ORFI Installer Distribution .....	7
Database Schema Topology.....	7
Create Tablespaces.....	8
Create the ORFI Database User.....	8
Run the ORFI Database Schema Installer .....	8
Verification.....	9
<b>4 ORFI Application Installation Tasks</b> .....	<b>11</b>
Prerequisite .....	11
Expand the ORFI Installer Distribution .....	11
Configure the Deployment Info for JSON File.....	11
Service Consumer Security .....	14
Generate the EBS Component .....	14
Verification.....	16
Deploy the ORFI Application.....	17
Verification.....	17
Post Deployment Steps .....	17
<b>5 EBS Database Installation Tasks</b> .....	<b>19</b>
Prerequisite .....	19
Copy EBS Specific Files .....	19

---

Create Tablespaces.....	19
Create the ODI Staging Database User .....	20
Create Database Link.....	20
Run the EBS Initial Database Setup .....	21
Verification.....	21
<b>6 EBS Event Subscription Tasks .....</b>	<b>23</b>
EBS Event Subscription Setup .....	23
EBS Event Subscription Install .....	26
<b>7 ODI Setup Tasks .....</b>	<b>31</b>
Prerequisite .....	31
Copy ODI-Specific Files .....	31
Create Tablespaces.....	31
Create the ODI Master Repository Database User .....	31
Create the ODI Work Repository Database User .....	32
ODI – Set Up Master Repository and Work Repository .....	32
Create Master Repository .....	32
Create Work Repository.....	36
Import ODI Interfaces .....	43
Update Connection Information.....	47
Scenario Test .....	48
Scenario .....	48
Run Agent Scheduler.....	49
Generate Scheduler .....	49
Update Schedule .....	50
Check .....	50
<b>A Appendix: Installation Order .....</b>	<b>51</b>
Enterprise Installation Order.....	51

---

---

# Send Us Your Comments

Oracle Retail Financial Integration, Installation Guide, Release 14.0

Oracle welcomes customers' comments and suggestions on the quality and usefulness of this document.

Your feedback is important, and helps us to best meet your needs as a user of our products. For example:

- Are the implementation steps correct and complete?
- Did you understand the context of the procedures?
- Did you find any errors in the information?
- Does the structure of the information help you with your tasks?
- Do you need different information or graphics? If so, where, and in what format?
- Are the examples correct? Do you need more examples?

If you find any errors or have any other suggestions for improvement, then please tell us your name, the name of the company who has licensed our products, the title and part number of the documentation and the chapter, section, and page number (if available).

---

**Note:** Before sending us your comments, you might like to check that you have the latest version of the document and if any concerns are already addressed. To do this, access the Online Documentation available on the Oracle Technology Network Web site. It contains the most current Documentation Library plus all documents revised or released recently.

---

Send your comments to us using the electronic mail address: [retail-doc\\_us@oracle.com](mailto:retail-doc_us@oracle.com)  
Please give your name, address, electronic mail address, and telephone number (optional).

If you need assistance with Oracle software, then please contact your support representative or Oracle Support Services.

If you require training or instruction in using Oracle software, then please contact your Oracle local office and inquire about our Oracle University offerings. A list of Oracle offices is available on our Web site at [www.oracle.com](http://www.oracle.com).





---

---

# Preface

Oracle Retail Installation Guides contain the requirements and procedures that are necessary for the retailer to install Oracle Retail products.

## Audience

This Installation Guide is written for the following audiences:

- Database administrators (DBA)
- System analysts and designers
- Integrators and implementation staff

## Documentation Accessibility

For information about Oracle's commitment to accessibility, visit the Oracle Accessibility Program website at

<http://www.oracle.com/pls/topic/lookup?ctx=acc&id=docacc>.

### Access to Oracle Support

Oracle customers have access to electronic support through My Oracle Support. For information, visit

<http://www.oracle.com/pls/topic/lookup?ctx=acc&id=info> or visit <http://www.oracle.com/pls/topic/lookup?ctx=acc&id=trs> if you are hearing impaired.

## Related Documents

For more information, see the following documents:

- *Oracle Retail Financial Integration Release Notes*
- *Oracle Retail Financial Integration Implementation Guide*
- *Oracle Retail Merchandising System documentation set*
- *Oracle Retail Integration Bus documentation set*
- *Oracle Retail Services Backbone documentation set*
- *Oracle Retail Invoice Matching documentation set*

## Customer Support

To contact Oracle Customer Support, access My Oracle Support at the following URL:

<https://support.oracle.com>

When contacting Customer Support, please provide the following:

- Product version and program/module name
- Functional and technical description of the problem (include business impact)
- Detailed step-by-step instructions to re-create
- Exact error message received
- Screen shots of each step you take

## Review Patch Documentation

When you install the application for the first time, you install either a base release (for example, 14.0) or a later patch release (for example, 14.0.1). If you are installing the base release or additional patch releases, read the documentation for all releases that have occurred since the base release before you begin installation. Documentation for patch releases can contain critical information related to the base release, as well as information about code changes since the base release.

## Improved Process for Oracle Retail Documentation Corrections

To more quickly address critical corrections to Oracle Retail documentation content, Oracle Retail documentation may be republished whenever a critical correction is needed. For critical corrections, the republication of an Oracle Retail document may at times **not** be attached to a numbered software release; instead, the Oracle Retail document will simply be replaced on the Oracle Technology Network Web site, or, in the case of Data Models, to the applicable My Oracle Support Documentation container where they reside.

This process will prevent delays in making critical corrections available to customers. For the customer, it means that before you begin installation, you must verify that you have the most recent version of the Oracle Retail documentation set. Oracle Retail documentation is available on the Oracle Technology Network at the following URL:

<http://www.oracle.com/technetwork/documentation/oracle-retail-100266.html>

An updated version of the applicable Oracle Retail document is indicated by Oracle part number, as well as print date (month and year). An updated version uses the same part number, with a higher-numbered suffix. For example, part number E123456-02 is an updated version of a document with part number E123456-01.

If a more recent version of a document is available, that version supersedes all previous versions.

## Oracle Retail Documentation on the Oracle Technology Network

Documentation is packaged with each Oracle Retail product release. Oracle Retail product documentation is also available on the following Web site:

<http://www.oracle.com/technetwork/documentation/oracle-retail-100266.html>

(Data Model documents are not available through Oracle Technology Network. These documents are packaged with released code, or you can obtain them through My Oracle Support.)

Documentation should be available on this Web site within a month after a product release.

## Conventions

**Navigate:** This is a navigate statement. It tells you how to get to the start of the procedure and ends with a screen shot of the starting point and the statement “the Window Name window opens.”

This is a code sample

It is used to display examples of code

---



---

## Preinstallation Tasks

This chapter explains the tasks required prior to installation.

### Check Supported Database Server Requirements

General requirements for a database server running Oracle Retail Financial Integration Pack include:

Supported on	Versions Supported
Database Server OS	<p>OS supported with Oracle Database 11gR2 Enterprise Edition. Options are:</p> <ul style="list-style-type: none"> <li>▪ Oracle Linux 6 for x86-64 (Actual hardware or Oracle virtual machine).</li> <li>▪ Red Hat Enterprise Linux 6 for x86-64 (Actual hardware or Oracle virtual machine).</li> <li>▪ AIX 7.1 (Actual hardware or LPARs)</li> <li>▪ Solaris 11 SPARC (Actual hardware or logical domains)</li> </ul>
Database Server 11gR2	<p>Oracle Database Enterprise Edition 11gR2 (11.2.0.3) with the following specifications:</p> <ul style="list-style-type: none"> <li>▪ <b>Components:</b></li> <li>▪ Oracle Partitioning</li> <li>▪ Advanced Security (Optional)</li> <li>▪ Examples CD</li> <li>▪ <b>Oneoff Patches:</b></li> <li>▪ 13036331: ORA-01031 INSUFFICIENT PRIVILEGES WHEN GRANTING EXECUTE ON DBMS PACKAGES</li> <li>▪ <b>Other Components:</b></li> <li>▪ Perl interpreter 5.0 or later</li> <li>▪ X-Windows interface</li> </ul>

## Check Supported ODI Requirements

General requirements for an Oracle Data Integrator running Oracle Retail Financial Integration Pack include:

Supported on	Versions Supported
Data Integrator Server OS	OS supported with Oracle Database 11gR2 Enterprise Edition. Options are: <ul style="list-style-type: none"> <li>▪ Oracle Linux 6 for x86-64 (Actual hardware or Oracle virtual machine).</li> <li>▪ Red Hat Enterprise Linux 6 for x86-64 (Actual hardware or Oracle virtual machine).</li> <li>▪ AIX 7.1 (Actual hardware or LPARs)</li> <li>▪ Solaris 11 SPARC (Actual hardware or logical domains)</li> </ul>
Data Integrator 11gR1	Oracle Data Integrator Release 11gR1 (11.1.1.6.0) with the following specifications: Oracle Fusion Middleware 11g Release 1 (11.1.1.6) <b>Components:</b> <ul style="list-style-type: none"> <li>▪ Oracle Data Integrator 11g Release 1 (11.1.1.6.0)</li> </ul>

## Check Supported Application Server Requirements

General requirements for an application server capable of running the Oracle Retail Financial Integration application include the following:

**Note:** Files required for Oracle Configuration Manager (OCM) are removed after OPatch is used to patch the WebLogic server. This will cause the product installers and OCM installation to fail. To work around this issue, back up the content of the \$ORACLE\_HOME/utls/ccr/lib directory prior to applying a patch using OPatch, and recopy the content back after you apply any patches. ORACLE\_HOME is the location where WebLogic Server has been installed.

Supported on	Versions Supported
Application Server OS	<p>OS supported with Oracle Fusion Middleware 11g Release 1 (11.1.1.6). Options are:</p> <ul style="list-style-type: none"> <li>▪ Oracle Linux 6 for x86-64 (Actual hardware or Oracle virtual machine).</li> <li>▪ Red Hat Enterprise Linux 6 for x86-64 (Actual hardware or Oracle virtual machine).</li> <li>▪ AIX 7.1 (Actual hardware or LPARs)</li> <li>▪ Solaris 11 SPARC (Actual hardware or logical domains)</li> </ul>
Application Server	<p>Oracle Fusion Middleware 11g Release 1 (11.1.1.6)</p> <p><b>Components:</b></p> <ul style="list-style-type: none"> <li>▪ Oracle WebLogic Server 11g Release 1 (10.3.6)</li> <li>▪ Java: JDK 1.7+ 64 bit</li> </ul> <p><b>IMPORTANT:</b> If there is an existing WebLogic installation on the server, you must upgrade to WebLogic 10.3.6. All middleware components associated with WebLogic server 10.3.3 or 10.3.4 should be upgraded to 11.1.1.6.</p> <p>Back up the weblogic.policy file (\$WL_HOME/ server/lib) before upgrading your WebLogic server, because this file could be overwritten. Copy over the weblogic.policy backup file after the WebLogic upgrade is finished and the post patching installation steps are completed.</p> <p><b>Note:</b> The installer can fail because of missing .jar in \$ORACLE_HOME/utls/ccr/lib. This issue occurs only when the application is being installed on the same WebLogic server on which forms based applications are installed. It is valid only for Linux 64-bit.</p>

## Check Supported Client PC and Web Browser Requirements

Requirement	Version
Operating system	Windows XP or Windows 7
Display resolution	1024x768 or higher
Processor	2.6GHz or higher
Memory	1GByte or higher
Networking	intranet with at least 10Mbps data rate
Oracle (Sun) Java Runtime Environment	1.7.0+
Browser	Microsoft Internet Explorer 8 or 9 Mozilla Firefox 17.0

## Supported Oracle Retail Products

Requirement	Version
Oracle Retail Merchandising System (RMS)	14.0
Oracle Retail Sales Audit (ReSA)	14.0
Oracle Retail Invoice Matching (ReIM)	14.0
Oracle Retail Integration Bus (RIB)	14.0

## UNIX User Account Privileges to Install the Software

A UNIX user account is needed to install the software. The UNIX user that is used to install the software should have write access to the WebLogic server installation files. For example, oretail.

---



---

**Note:** Installation steps will fail when trying to modify files under the WebLogic installation, unless the user has write access.

---



---

## Supported Oracle Applications

Requirement	Version
Oracle E-Business Suite (Accounts Payable)	Oracle E-Business Suite 12.1.3 integration is supported using the Oracle Financial Operations Control Integration Pack for Oracle Retail Merchandising Suite and Oracle E-Business Suite Financials.

---

---

## ORFI Installation

This guide details the steps needed to perform an installation of ORFI. This will cover the EBS Business Event Subscription setup for currency rate and suppliers, the ORFI layer setup and creation of ODI master and work repositories, importing the ODI packages, and scheduling the scenarios. At the end of the installation, you can integrate EBS 12.1.3 and Retail 14.0.

The following chapters document the installation process:

- [ORFI Database Installation Tasks](#)
- [ORFI Application Installation Tasks](#)
- [EBS Database Installation Tasks](#)
- [EBS Event Subscription Tasks](#)
- [ODI Setup Tasks](#)

---

---

**Note:** After you have installed your supporting Oracle Retail applications and confirmed that they are functioning, you can begin the installation of ORFI.

---

---





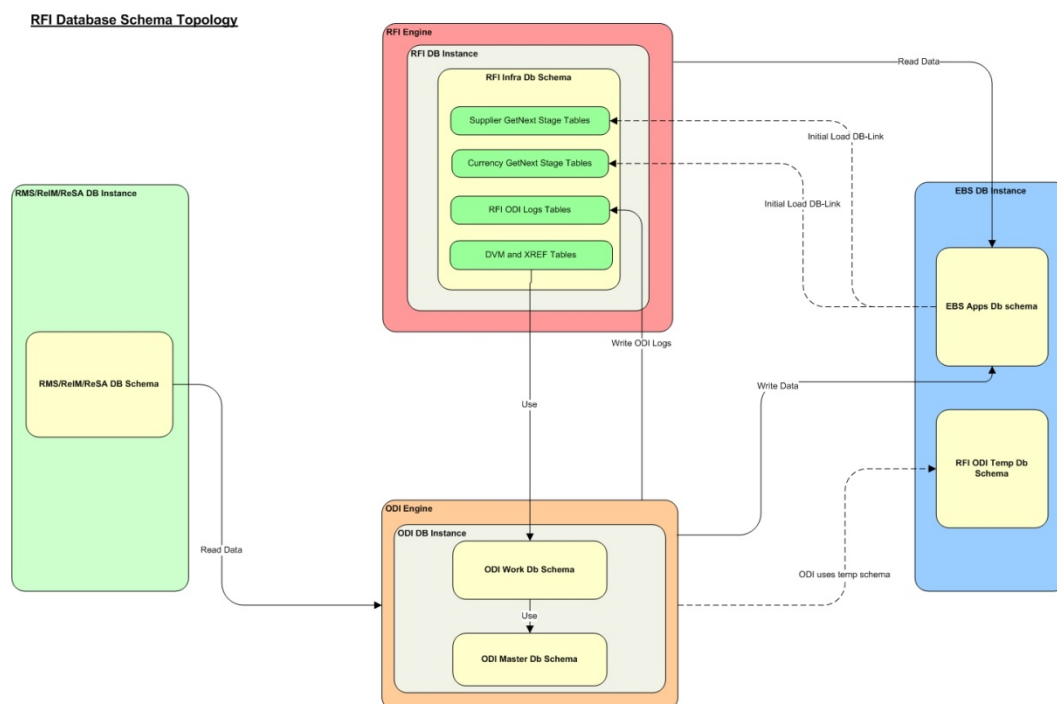
# ORFI Database Installation Tasks

## Expand the ORFI Installer Distribution

1. Log in to the UNIX server as a user who has sufficient access to run sqlplus from the Oracle Database installation.
2. Create a new staging directory for the ORFI installer distribution (RetailFinancialIntegrationPak14.0.0ForRfi14.0.0\_eng\_ga.zip). There should be a minimum of 50 MB disk space available for the application and database schema installation files. This location is referred to as INSTALL\_DIR for the remainder of this chapter.
3. Copy RetailFinancialIntegrationPak14.0.0ForRfi14.0.0\_eng\_ga.zip to <INSTALL\_DIR> and extract its contents.

## Database Schema Topology

This topology diagram shows how different schemas are integrated with each other.



## Create Tablespaces

Before you run the ORFI database schema installer, make sure that the RFI\_DATA tablespace has been created in the database.

Below is a sample tablespace creation statement for the RFI\_DATA tablespace. Oracle Retail recommends the use of locally managed tablespaces with automatic extent and segment space management. These tablespaces are not sized for a production environment.

```
CREATE TABLESPACE RFI_DATA DATAFILE
'<datafile_path>/rfi_data01.dbf' SIZE 500M
AUTOEXTEND ON NEXT 100M MAXSIZE 2000M
EXTENT MANAGEMENT LOCAL
SEGMENT SPACE MANAGEMENT AUTO
;
```

## Create the ORFI Database User

The user in the database who will own the ORFI tables must be created prior to running the ORFI database schema installer. A create\_user.sql script has been provided that can be used for this:

```
$INSTALL_DIR/retail-financial-integration-solution/service-based-
integration/setup-data/ddl/create_user.sql
```

After installation is completed, a detailed database user creation log file is created:

```
$INSTALL_DIR/retail-financial-integration-solution/service-based-integration/setup-
data/ddl/create_user.log
```

The script takes three arguments on the command line in sqlplus: username, password and ORFI tablespace name.

```
Example: SQL> @create_user.sql <RFI Schema> <RFI
Schema Password> <RFI Tablespace Name>
```

Review this script and run it as a user with adequate permissions, such as SYSTEM.

## Run the ORFI Database Schema Installer

This installer installs the ORFI database schema, compiles ORFI objects, and inserts ORFI data.

1. Set the following environment variables:
  - Set the ORACLE\_HOME to point to an installation that contains sqlplus. It is recommended that this be the ORACLE\_HOME of the ORFI database.
  - Set the PATH to: \$ORACLE\_HOME/bin:\$PATH
  - Set the ORACLE\_SID to the name of your database
  - Set the NLS\_LANG for proper locale and character encoding

```
Example: NLS_LANG=AMERICAN_AMERICA.UTF8
```

2. If you are using an X server such as Xceed, set the DISPLAY environment variable so that you can run the installer in GUI mode (recommended). If you are not using an X server, or the GUI is too slow over your network, unset DISPLAY for text mode.

3. Run the `load-initial-setup-data-into-integration-schema.sh` script available in `$INSTALL_DIR/retail-financial-integration-solution/service-based-integration/bin/`. After installation is completed, a detailed installation log file is created: `$INSTALL_DIR/retail-financial-integration-solution/service-based-integration/bin/<timestamp>.log`.

---

---

**Example:** `prompt$ sh load-initial-setup-data-into-integration-schema.sh`

---

---

The installer prompts for the following details:

- Enter the ORFI database schema details  
Enter ORFI Userid/Passwd:
- Enter the ORFI database server name  
Enter Database Server Name or IP address:
- Enter the ORFI database server port  
Enter Database Port Number:
- Enter the ORFI database server SID  
Enter Database SID:

## Verification

Log in to the ORFI database schema in the database and query `"SELECT * FROM TAB WHERE TNAME LIKE 'RFI%'"`. This query should list the following tables:

- `RFI_CURR_RATE_STAGE`
- `RFI_ODI_LOGS`
- `RFI_SUPP_CONTACTS_STAGE`
- `RFI_SUPP_SITES_STAGE`
- `RFI_SUPP_STAGE`
- `RFI_XREF_DVM`



---

---

# ORFI Application Installation Tasks

## Prerequisite

Before proceeding you must install Oracle WebLogic Server 11g 10.3.6 and the patches listed in Chapter 1 of this document. Create a WebLogic domain called `rfi_domain`. This WebLogic domain must be of a base domain type. Create a managed server (for example, `rfi-server`) inside this `rfi_domain`. The ORFI application will be installed into the WebLogic managed server (for example, `rfi-server`). It is assumed that the Oracle database has already been configured and loaded with the appropriate ORFI, RMS, EBS, and ODI (Master, Work, and Staging Area) schema details for your installation. This server is referred to as `RFI_SERVER` in this document.

You need to execute the Expand the ORFI Installer Distribution steps if the UNIX environments for the ORFI database and WebLogic Server are different.

## Expand the ORFI Installer Distribution

1. Log in to the UNIX server where the WebLogic server is installed as a user who has sufficient access to deploy an application from the Oracle WebLogic installation.
2. Create a new staging directory for the ORFI installer distribution (`RetailFinancialIntegrationPak14.0.0ForRfi14.0.0_eng_ga.zip`). There should be a minimum of 50 MB disk space available for the application and database schema installation files. This location is referred to as `INSTALL_DIR` for the remainder of this chapter.
3. Copy `RetailFinancialIntegrationPak14.0.0ForRfi14.0.0_eng_ga.zip` to `<INSTALL_DIR>` and extract its contents.

## Configure the Deployment Info for JSON File

The `rfi-deployment-env-info.json` file serves multiple purposes. It is used by the installation process and it also acts as a single master configuration file that describes the entire topology of the integration system. The values in this file must be accurate for the system to work properly. All values in the file are not user editable; the installation process needs these fixed names to match what the compiled runtime code already expects. Some examples of these fixed values that must not be changed are constants like `"GET_FROM_WALLET"`; jndi name like `"jdbc/RfiDataSource"` and so on.

You need to configure the following list of deployment information to run the ORFI deployment script. This file can be found under `$INSTALL_DIR/retail-financial-integration-solution/service-based-integration/conf/`. Edit the following line from the file:

```
rfi-deployment-env-info.json
```

---

---

**Note:** Do not change "Alias" Names or any other values other than the details given below.

---

---

---

---

**Note:** You should remove the symbols "<" and ">" while entering the actual/valid values for below configurations.

---

---

Update the following details from RfiDeploymentEnvInfo → DataSourceDef configuration:

1. In EbsDataSource, enter the EBS database connection details:  
`"jdbcUrl": "jdbc:oracle:thin:@//<Server Name>:<Port>/<SID>"`
2. In RmsDataSource, enter the RMS database connection details:  
`"jdbcUrl": "jdbc:oracle:thin:@//<Server Name>:<Port>/<SID>"`
3. In RfiDataSource, enter the ORFI database connection details:  
`"jdbcUrl": "jdbc:oracle:thin:@//<Server Name>:<Port>/<SID>"`
4. In OdiMasterDataSource, enter the ODI Master repository database connection details:  
`"jdbcUrl": "jdbc:oracle:thin:@//<Server Name>:<Port>/<SID>"`
5. In OdiWorkDataSource, enter the ODI Work repository database connection details:  
`"jdbcUrl": "jdbc:oracle:thin:@//<Server Name>:<Port>/<SID>"`
6. In OdiStagingAreaDataSource, enter the ODI Staging database connection details:  
`"jdbcUrl": "jdbc:oracle:thin:@//<Server Name>:<Port>/<SID>"`

---

**Note:** It is recommended to have the ODI Staging Schema (RFI\_ODI\_TEMP) in the EBS database.

---

7. Update the following details from RfiDeploymentEnvInfo → MiddlewareServerDef → RfiAppServer configuration:
  - Enter the WebLogic domain name:  
`"weblogicDomainName": "<RFI Domain Name>",`
  - Enter the WebLogic domain home:  
`"weblogicDomainHome": "<RFI Domain Name>",`
  - Enter the WebLogic admin server protocol:  
`"weblogicDomainAdminServerProtocol": "t3",`
  - Enter the WebLogic admin server host name:  
`"weblogicDomainAdminServerHost": "<Server Host Name>"`
  - Enter the WebLogic server port:  
`"weblogicDomainAdminServerPort": "<port>"`
  - Enter the WebLogic Managed Server Name:  
`"weblogicDomainTargetManagedServerName": "<Server Name>"`
  - Enter the End point URL for GIAccount Service :  
`"glAccountValidationServiceEndPointUrl": "http://myhostname:7001/GIAccountValidationBean/GIAccountValidationService?WSDL",`
  - Enter the ORFI UI url host name and port details:  
`"rfiAdminUiUrl": "http://<host>:<port>/retail-financial-integration-web",`
  - Enter the SMTP server host:  
`"smtpServerHost": "<SMTP Server Host>"`
  - Enter the SMTP server port:  
`"smtpServerPort": "<SMTP Server Port>"`
  - Enter the SMTP server type (for example, SSL or TSL):  
`"smtpServerListenerType": "<SMTP Server Type>"`
  - Enter "true" if authentication required for SMTP server, else "false":  
`"smtpAuthenticationRequired": "<true/false>"`

- Enter the From Email Address:  
"smtpMailFromAddress": "<From Address>"
- Enter the Comma (,) separated To Address list:  
"smtpMailToAddressList": "<To Address Email Id's>"

For example:

```
"smtpMailToAddressList": "<ToAddr1@oracle.com,ToAddr2@oracle.com>"
```

8. Update an Integrated Gateway Services detail for Currency Rate service from RfiDeploymentEnvInfo → MiddlewareServerDef → IgsAppServer configuration.

Enter the IGS Currency Rate End point URL:

```
"currencyRateServiceEndPointUrl": "<Currency Rate URL>"
```

9. Update RfiDeploymentEnvInfo → MiddlewareServerDef → RmsAppServer details for Supplier Service.

Enter the Supplier service End point URL:

```
"supplierServiceEndPointUrl": "<Supplier URL>"
```

10. Update RfiDeploymentEnvInfo → MiddlewareServerDef → EbsAppServer details for Supplier Service:

Enter the EBS server \$JAVA\_TOP folder path

```
"ebsInstanceJavaTopLocation": "<JAVA_TOP>"
```

For example:

```
"ebsInstanceJavaTopLocation": " /u01/applmgr/apps/apps_st/comm/java/classes"
```

---

**Note:** If EBS is installed on Oracle Application Server substitute the corresponding OAS/oc4j information instead of WebLogic server information.

---

11. The following configuration is for Unsecured and Policy A configuration.
12. Update the application security configuration for your environment. ORFI application is certified with Policy-A (UsernameToken over HTTPS). Add one of the key words policyA or Unsecured to service settings based on the nature of security selected at the service level.

---

**Example:**

For Currency Rate Service, Policy A (HTTPS) setting :

Update the JSON file with policyName to policyA:

```
"currencyRateServiceEndPointSecurityPolicyName": "policyA" .
```

For Supplier Service, Policy A (HTTPS) setting :

Update the JSON file with policy Name to policyA:

```
"supplierServiceEndPointSecurityPolicyName": "policyA" .
```

For Currency Rate Service, Unsecured setting:

Update the JSON file with policyName to spaces:

```
"currencyRateServiceEndPointSecurityPolicyName": "Unsecured" .
```

---

---

---

For Supplier Service, Unsecured setting:

Update the JSON file with policyName to spaces:

```
" supplierServiceEndPointSecurityPolicyName":" Unsecured" .
```

---

---

## Service Consumer Security

ORFI can be secured with policy-A (UsernameToken over HTTPS), if the service hosted by the ORFI application is secured, then the consumer of the service (Example : RMS) must be configured such that it can invoke the secured service. For more information on Service consumer configuration for Policy A, see the Oracle Retail Services Backbone Security Guide.

## Generate the EBS Component

You need to generate an EBS component jar file (ebs-financial-common-14.0.0.jar). This should be placed in the EBS application environment to communicate the supplier and currency rate events to the Oracle Retail Merchandise system.

---

---

**Note:** Ensure JAVA\_HOME and WL\_HOME variables are set in the environment. WL\_HOME points to the folder location till <WebLogic Installed folder>/wlserver\_10.3. Aliases names and Admin Group name are not editable.

---

---

1. Run the rfi-deployer.sh (available in \$INSTALL\_DIR/retail-financial-integration-solution/service-based-integration/bin/) script to configure and save the AppServer and DB credentials to ORFI wallet.

The script takes two arguments on the command line: -setup-credentials and -prepare-ebs-side-component.

---

---

**Example:** prompt\$ sh rfi-deployer.sh -setup-credentials  
-prepare-ebs-side-component

---

---

2. The installer prompts for the following details:
  - WebLogic login credentials  
Credential required for weblogicDomainAdminServerHost (<HOST\_NAME>)  
weblogicDomainAdminServerPort (<PORT>):  
Enter username for alias (rfiAppServerAdminServerUserAlias):<Enter WebLogic Admin server Login name>  
Enter Password: <Enter WebLogic Admin server Login password>
  - ORFI Admin Group login Credentials (ORFI Admin UI)  
Credential required for rfiAdminUiUrl (<Entered value in JSON file>):  
Enter username for alias (rfiAdminUiUserAlias):<Enter the login name for ORFI Admin>  
Enter Password: <Enter ORFI Admin Login password>
  - ORFI Database Schema details  
Credential required for jdbcUrl (<Entered value in JSON file>):  
For Currency Rate Service, Policy A setting: Installer will prompt for Admin username, Admin password.
  - Email Details – From Email Address and password



- EBS Schema details  
Enter username for alias (rfiDataSourceUserAlias):<Enter the ORFI Schema user name>  
Enter Password: <Enter ORFI Schema password>  
Credential required for jdbcUrl(<Entered value in JSON file>):  
Enter username for alias (ebsDataSourceUserAlias):apps  
Enter Password: <Enter EBS APPS Schema password>  
Credential required for email address (<Entered value in JSON file>):  
Verify email by retyping above email address (smtpMailFromAddressAlias):  
<Enter From Email Address>  
Enter Password: <Enter Password for the above From Email Address>

- Secured Service details:  
Pre-requisites - Security admin user has been configured, User name and password has been captured. If not, follow these instructions provided in the *Oracle Retail Integration Bus Security Guide*.

**Note:** For Policy A Security Admin User name and Password should be provided.

The installer will prompt for Admin username, Admin password if policyA setting is configured in the JSON file. For Unsecured settings, the following steps will be skipped.

The examples below contain a combination of service and policy settings:

**Example:** Credential required for Currency Rate service for Policy A:

currencyRateServiceUserAlias(http://samplehost:21977/igs-CurRatePublishing-AppServiceDecorator/ProxyService/CurRatePublishingAppServiceProxy?wsdl):

Enter username for alias  
(currencyRateServiceEndPointUserAlias):  
<adminusername>

Enter Password:<adminuserpassword>

- For Supplier Service, Policy A setting: Installer will prompt for Admin username and password, enter the username and password.

**Example:** Credential required for Supplier service for Policy A:

supplierServiceEndPointUserAlias(http://samplehost:21999/SupplierBean/SupplierService?WSDL):

Enter username for alias  
(supplierServiceEndPointUserAlias): <adminusername>

Enter Password:<adminuserpassword>

## Verification

The generated components can be verified from the following target folders:

1. A jar file “ebs-financial-common-14.0.0.jar” should be available in folder \$INSTALL\_DIR/retail-financial-integration-solution/service-based-integration/target/ebs-side/rfi/rfi-ebs-event-handler/.

---

**Note:** The “rfi” folder in \$INSTALL\_DIR/retail-financial-integration-solution/service-based-integration/target/ebs-side/ should be copied to a staging folder in the EBS server which will be referred as EBS\_COMP\_DIR in EBS UNIX environment.

---

2. Update \$WL\_HOME/server/lib/weblogic.policy file with the following:

---

**Note:** If copying the following text from this guide to UNIX, ensure that it is properly formatted in UNIX. Each line entry beginning with "permission" must terminate on the same line with a semicolon.

---



---

**Note:** <WEBLOGIC\_HOME> in the below example is the full path of the WebLogic Domain. rfi\_server is the managed server created for the App and rfi-admin correlates to the value entered for the application deployment name/context root of the application during installation. See the example. There should not be a space after **file:** in the following. File :< WEBLOGIC\_DOMAIN\_HOME>.

---

```
grant codeBase
"file:<WEBLOGIC_HOME>/user_projects/domains/rfi_domain/servers/rfi-server/tmp/_WL_user/rfi-admin/" {permission
java.security.AllPermission;permission
oracle.security.jps.service.credstore.CredentialAccessPermission
"credstoressp.credstore", "read,write,update,delete";permission
oracle.security.jps.service.credstore.CredentialAccessPermission
"credstoressp.credstore.*", "read,write,update,delete";}
```

**Example:** An example of the full entry that might be entered is:

```
grant codeBase
"file:/u00/rfi1/Oracle/Middleware/user_projects/domains/rfi_domain/servers/rfi-server/tmp/_WL_user/rfi-admin/" {permission
java.security.AllPermission;permission
oracle.security.jps.service.credstore.CredentialAccessPermission
"credstoressp.credstore", "read,write,update,delete";permission
oracle.security.jps.service.credstore.CredentialAccessPermission
"credstoressp.credstore.*", "read,write,update,delete";}
```

---

**Note:** The path tmp/\_WL\_user/retail-financial-integration-ear-14.0.0.ear will not be available before the deployment.

---

3. An ear file “retail-financial-integration-ear-14.0.0.ear” should be available in folder \$INSTALL\_DIR/retail-financial-integration-solution/service-based-integration/target/rfi-side/.

## Deploy the ORFI Application

Before proceeding, you must have an ear file (retail-financial-integration-ear-14.0.0.ear) from the location \$INSTALL\_DIR/retail-financial-integration-solution/service-based-integration/target/rfi-side/.

---

**Note:** Ensure JAVA\_HOME and WL\_HOME variables are set in the environment. WL\_HOME points to folder location till <WebLogic Installed folder>/wlserver\_10.3

---

1. Run the rfi-deployer.sh (available in \$INSTALL\_DIR/retail-financial-integration-solution/service-based-integration/bin/) script to deploy the ORFI application to the WebLogic server. This script considers all the configuration values defined in previous processes.

The script takes two arguments on the command line: -use-existing-credentials and -deploy-rfi-app.

---

**Example:** prompt\$ sh rfi-deployer.sh -use-existing-credentials -deploy-rfi-app

---

2. After successful deployment of the ORFI application, restart the Weblogic server.

## Verification

Log in to the WebLogic console and verify the deployments. The ORFI application ear (retail-financial-integration-ear-14.0.0.ear) should be available.

## Post Deployment Steps

1. Edit \$WL\_HOME/common/nodemanager/nodemanager.properties file to change the StartScriptEnabled property to true and make sure the StartScriptName property is set to startWebLogic.sh. Below is a sample from the file:

```
StartScriptName=startWebLogic.sh
StartScriptEnabled=true
```

---

**Note:** The nodemanager.properties file is created after NodeManager is started for the first time. It will not be available before that point. NodeManager must be restarted after making changes to the nodemanager.properties file.

---



---

---

# EBS Database Installation Tasks

## Prerequisite

It is assumed Oracle database has already been configured and loaded with the appropriate EBS schema details for your installation.

## Copy EBS Specific Files

---

---

**Note:** You can skip the next steps and proceed to section "Create Tablespaces" if you can connect to EBS Database from ORFI Server using Sqlplus.

---

---

1. Log in to the EBS UNIX server as a user who has sufficient access to run sqlplus from the Oracle Database installation for APPS schema.
2. Create the retail-financial-integration-solution/service-based-integration folder in the <INSTALL\_DIR> folder.
3. From the ORFI server, copy <INSTALL\_DIR>/retail-financial-integration-solution/service-based-integration/setup-data folder to <INSTALL\_DIR>/retail-financial-integration-solution/service-based-integration folder in EBS server

## Create Tablespaces

Before you run the ODI Staging database user, make sure that the following tablespace has been created in the database: ODI\_STAGE\_DATA. Below is a sample tablespace creation statement for this tablespace. Oracle Retail recommends the use of locally managed tablespaces with automatic extent and segment space management.

---

---

**Note:** These tablespaces are not sized for a production environment.

---

---

```
CREATE TABLESPACE ODI_STAGE_DATA DATAFILE
'<datafile_path>/odi_stage_data01.dbf' SIZE 500M
AUTOEXTEND ON NEXT 100M MAXSIZE 2000M
EXTENT MANAGEMENT LOCAL
SEGMENT SPACE MANAGEMENT AUTO
;
```

## Create the ODI Staging Database User

You must create an ODI Staging schema using a `create_user.sql`, included with the installer distribution. This will be used to execute the ODI Interface at run time. The `create_user.sql` script can be used to create the schema:

```
$INSTALL_DIR/retail-financial-integration-solution/service-based-integration/setup-data/ddl/create_user.sql
```

The script takes three arguments on the command line in sqlplus: username, password, and ODI Stage tablespace.

---

```
Example: SQL> @create_user.sql RFI_ODI_TEMP  
<RFI_ODI_TEMP Schema Password> <ODI Stage  
Tablespace name>
```

---

Please review this script and run it as a user with adequate permissions, such as SYSTEM.

Connect to RFI\_ODI\_TEMP schema as sysdba and grant all privileges to AP schema available on EBS Database. Grant all privileges will be used for CRUD operation in RFI\_ODI\_TEMP tables while running ODI interfaces.

## Create Database Link

You need to create a database link to load initial data for currency rate and suppliers from Oracle E-Business Suite to the Oracle Retail Financial Integration application.

1. Log in to the APPS database schema in the EBS database to run `create_dblink.sql` script.
2. Run the `create_dblink.sql` script available in `$INSTALL_DIR/retail-financial-integration-solution/service-based-integration/setup-data/ddl/` from EBS APPS database schema.

The script takes four arguments on the command line: DB link name (EBS\_RFI\_DBLINK), ORFI schema name, ORFI schema password, and ORFI DB URL.

---

```
Example: SQL> @create_dblink.sql <EBS_RFI_DBLINK>  
<ORFI Schema> <ORFI Schema Password> <ORFI DB  
Host:port/SID>
```

---

---

**Note:** This database link will be used to load initial data for Currency Rate and Supplier from EBS to ORFI Staging tables. If DB link name is different from default (EBS\_RFI\_DBLINK), then the user needs to update the DB link name in the SQL scripts which are available in `retail-financial-integration-solution/etl-based-integration/retail-to-ebfin-etl-flows/setup-data/dml`.

---

## Run the EBS Initial Database Setup

This installer installs the ORFI related objects to the EBS APPS database schema.

---

**Note:** Ensure, sqlplus is executable with correct tns configuration information to EBS database is set in your path.

---

1. Run the load-initial-setup-data-into-ebfin-schema.sh script available in \$INSTALL\_DIR/retail-financial-integration-solution/service-based-integration/bin/. After installation is completed, a detailed installation log file is created: \$INSTALL\_DIR/retail-financial-integration-solution/service-based-integration/bin/<timestamp>.log.

---

**Example:** prompt\$ sh load-initial-setup-data-into-ebfin-schema.sh

```
sh load-initial-setup-data-into-ebfin-schema.sh
```

---

2. The installer prompts for the following details:
  - Enter the EBS database server SID – Enter Database SID.
  - Enter the EBS Schema details –Enter APPS User ID/Password.
  - Enter the EBS database server name – Enter Database Server Name or IP address.
  - Enter the EBS database server port – Enter Database Port Number.

---

**Note:** If you get the following error, make sure you have downloaded latest version of the ORFI software from Oracle download site and tns is configured.

```
ERROR: ORA-12154: TNS: could not resolve the connect
identifier specified.
```

---

## Verification

Log in to the APPS database schema in the EBS database and verify that the RFI\_GLACCT package and package body are available in the valid status using query: "SELECT \* FROM DBA\_OBJECTS WHERE OBJECT\_TYPE IN ('PACKAGE', 'PACKAGE BODY') AND OBJECT\_NAME='RFI\_GLACCT';".





# EBS Event Subscription Tasks

## EBS Event Subscription Setup

EBS raises the following oracle.apps.ap.supplier.event business event whenever there is a creation/modification of supplier, supplier sites, and supplier contacts.

1. Subscribe to the Supplier business event using Java subscription.
  - a. Log in to EBS application using sysadmin.
  - b. Navigate to Workflow Administrator Web Applications → Administrator Workflow → Business Events.
  - c. Search for the oracle.apps.ap.supplier.event event and click **Go**.
  - d. Click Subscription.



- e. Click Create Subscription.
- f. Enter the following details:
  - System – Select the System name using the LOV.
  - Source Type – Local
  - Event Filter - oracle.apps.ap.supplier.event
  - Phase – 71 (Any number less than 99)
  - Status – Enabled
  - Rule Data – Key
  - Action Type – Custom
  - On Error – Skip to Next
  - Click Next
  - Java Rule Function - com.oracle.retail.rfi.ebs.SupplierBES
  - Owner Name - Oracle Payables
  - Owner Tag – SQLAP

**ORACLE Administrator Workflow**

Home Developer Studio Business Events Status Monitor Notifications Administration

Events Subscriptions Agents Systems

Business Events: Events > Business Events: Events > Subscriptions >

Cancel Next

**Update Event Subscriptions**

An event subscription is a registration indicating that a particular event is significant to a particular system. An event subscription specifies the processing to perform when the triggering event occurs.

\* Indicates required field

**Subscriber**

\* System R12NET.US.ORACLE.COM

**Triggering Event**

\* Source Type Local

\* Event Filter oracle.apps.ap.supplier.event

Source Agent

**Execution Condition**

\* Phase 71

Subscription with a phase 1-99 are run synchronously ; 100 and above are deferred.

\* Status Enabled

\* Rule Data Key

**Action Type**

\* Action Type Custom

The Action Type controls the behaviour of the subscription.

On Error Skip to Next

Cancel Next

About this Page Privacy Statement Home Developer Studio Business Events Status Monitor Notifications Administration Diagnostics Home Logout Preferences Help

Copyright (c) 2006, Oracle. All rights reserved.

**g. Click Apply.**

**ORACLE Administrator Workflow**

Business Events: Events > Business Events: Events > Subscriptions > Update Event Subscriptions >

Update Event Subscription: Custom

Cancel Back Apply

**Action**

The Rule Function controls the behaviour of the subscription. Provide a Java Class name (<<Package>>.<<Class>>) for Java Rule Function and a PL/SQL stored procedure (<<Package>>.<<Function>>) for PL/SQL Rule Function.

Java Rule Function com.oracle.retail.fiebs.SupplierBES

PL/SQL Rule Function

Workflow Type

Workflow Process

Choose a Workflow Type, before choosing the Workflow Process for that Type

Out Agent

To Agent

\* Priority Normal

**Subscription Parameters**

Select Name	Value
No results found.	
Add Another Row	

Enter parameters and their values with no spaces

**Documentation**

\* Owner Name Oracle Payables

\* Owner Tag SQLAP

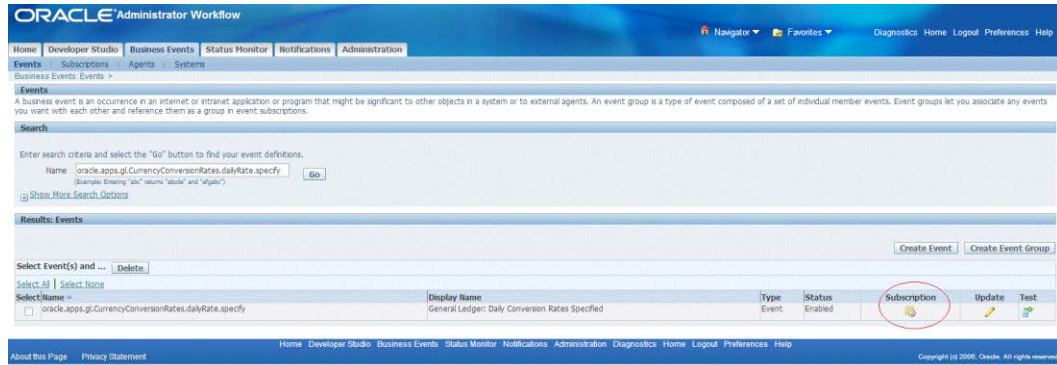
Customization Level User

Description

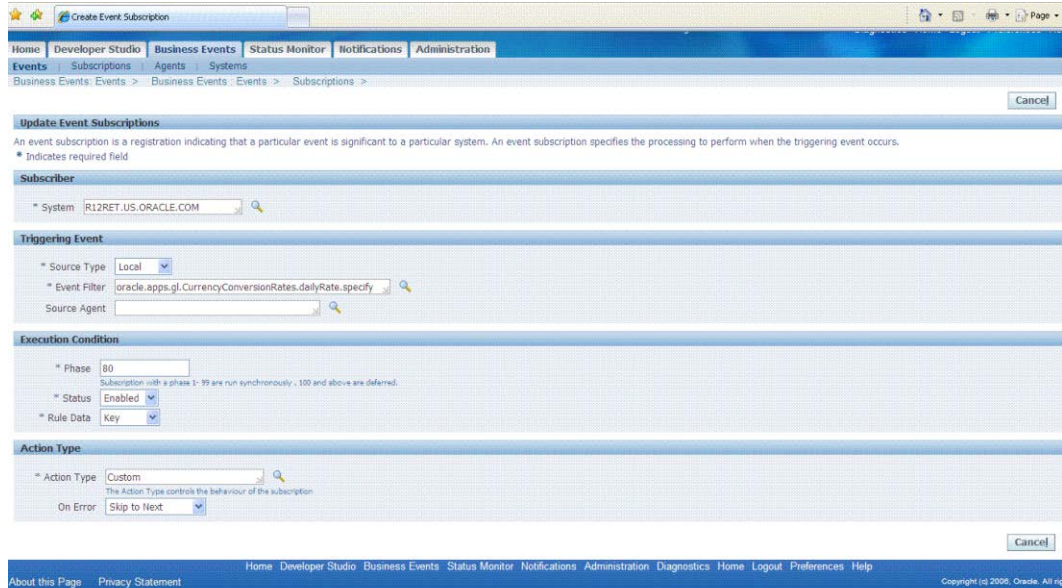
Cancel Back Apply

EBS raises the oracle.apps.gl.CurrencyConversionRates.dailyRate.specify business event whenever there is a creation/modification of Daily Currency Rates.

2. Subscribe to the Currency business event using Java subscription.
  - a. Log in to EBS application using sysadmin.
  - b. Navigate to Workflow Administrator Web Applications → Administrator Workflow → Business Events.
  - c. Search for the oracle.apps.gl.CurrencyConversionRates.dailyRate.specify event and click **Go**.
  - d. Click Subscription.



- e. Click Create Subscription.
- f. Enter the following details:
  - System – Select the System name using the LOV.
  - Source Type – Local
  - Event Filter - oracle.apps.gl.CurrencyConversionRates.dailyRate.specify
  - Phase – 70 (Any number less than 99)
  - Status – Enabled
  - Rule Data – Key
  - Action Type – Custom
  - On Error – Skip to Next
  - Click Next
  - Java Rule Function - com.oracle.retail.rfi.ebs.CurrencyRateBES
  - Owner Name - Oracle General Ledger
  - Owner Tag – SQLGL



- g. Click Apply.

3. Verify that Status=ENABLED and the Licensed\_flag=Y for the event and event subscription.
  - SELECT \* FROM wf\_events where name='<Event\_Name>';
  - SELECT \* from wf\_event\_subscriptions where event\_filter\_guid=(SELECT guid FROM wf\_events where name='<Event\_Name>');

## EBS Event Subscription Install

1. Log in to the EBS UNIX server
2. From the ORFI server, copy the <INSTALL\_DIR>/retail-financial-integration-solution/service-based-integration/target/ebs-side/rfi folder to a staging folder. This folder is referred to as EBS\_COMP\_DIR for the remainder of this document.

Install the Business Event Handler.

3. Log in to EBS UNIX server (telnet session) and run the env file (. ./apps.env).

**Note:** If apps.env file is not available, please check the <Instance\_name>\_<Servername>.env file in folder <APPS INSTALLED FOLDER>/ apps\_st/appl for the values of INST\_TOP, ADMIN\_SCRIPTS\_HOME, APPL\_CONFIG\_HOME. JAVA\_TOP folder is <APPS INSTALLED FOLDER>/apps\_st/comn/java/classes

**Example:** R12RET\_rstnssiovm0050.env file in folder /u01/app/R12RET/apr12ret/applmgr/apps/apps\_st/appl

4. Copy the ebs-side "rfi" folder from \$EBS\_COMP\_DIR to \$JAVA\_TOP

**Note:** The "rfi" folder is generated in the ORFI server \$INSTALL\_DIR/retail-financial-integration-solution/service-based-integration/target/ebs-side/

5. Go to the `$INST_TOP/appl/admin/` folder  
`cd $INST_TOP/appl/admin/`
6. Edit `<INSTANCE_SERVER>.xml` (for example, `R12RET_rstnssiovm0050.xml`) file  
`vi <INSTANCE_SERVER>.xml`
7. Add the `ebs-financial-common-14.0.0.jar` and `retail-public-security-api.jar` to `CLASSPATH` and `AF_CLASSPATH` variables.
8. Add the `retail-public-security-api.jar` as the first entry in `AF_CLASSPATH`.

**Note:** File locations used in the example are the absolute path and must be replaced to reflect the actual paths.

For example,

```
<CLASSPATH oa_var="s_adovar_classpath"
osd="unix">/u01/app/R12RET/apr12ret/applmgr/apps/tech_st/10.1.3/appsutil/jdk/li
ib/dt.jar:/u01/app/R12RET/apr12ret/applmgr/apps/tech_st/10.1.3/appsutil/jdk/li
b/tools.jar:/u01/app/R12RET/apr12ret/applmgr/apps/tech_st/10.1.3/appsutil/jdk/li
b/lib/rt.jar:/u01/app/R12RET/apr12ret/applmgr/apps/apps_st/comm/java/lib/app
sborq.zip:/u01/app/R12RET/apr12ret/applmgr/apps/tech_st/10.1.2/forms/java:/u01
/app/R12RET/apr12ret/applmgr/apps/tech_st/10.1.2/forms/java/frmall.jar:/u01/ap
p/R12RET/apr12ret/applmgr/apps/tech_st/10.1.2/jlib/ewt3.jar:/u01/app/R12RET/ap
r12ret/applmgr/apps/tech_st/10.1.2/j2ee/OC4J_BI_Forms/applications/formsapp/fo
rmsweb/WEB-
INF/lib/frmsrv.jar:/u01/app/R12RET/apr12ret/applmgr/apps/apps_st/comm/java/cla
sses:/u01/applmgr/apps/apps_st/comm/java/classes/rfi/retail-public-security-
api/lib/commons-cli-
1.2.jar:/u01/applmgr/apps/apps_st/comm/java/classes/rfi/retail-public-
security-api/lib/commons-logging-
1.1.1.jar:/u01/applmgr/apps/apps_st/comm/java/classes/rfi/retail-public-
security-api/lib/jps-api-
11.1.1.jar:/u01/applmgr/apps/apps_st/comm/java/classes/rfi/retail-public-
security-api/lib/jps-internal-
11.1.1.jar:/u01/applmgr/apps/apps_st/comm/java/classes/rfi/retail-public-
security-api/lib/jps-common-
11.1.1.jar:/u01/applmgr/apps/apps_st/comm/java/classes/rfi/retail-public-
security-api/lib/jps-unsupported-api-
11.1.1.jar:/u01/applmgr/apps/apps_st/comm/java/classes/rfi/retail-public-
security-api/lib/jacc-spi-
11.1.1.jar:/u01/applmgr/apps/apps_st/comm/java/classes/rfi/retail-public-
security-api/lib/jacc-api-
10.1.3.jar:/u01/applmgr/apps/apps_st/comm/java/classes/rfi/retail-public-
security-api/lib/jps-ee-
11.1.1.jar:/u01/applmgr/apps/apps_st/comm/java/classes/rfi/retail-public-
security-api/lib/jps-manifest-
11.1.1.jar:/u01/applmgr/apps/apps_st/comm/java/classes/rfi/retail-public-
security-api/lib/jps-mbeans-
11.1.1.jar:/u01/applmgr/apps/apps_st/comm/java/classes/rfi/retail-public-
security-api/lib/jps-upgrade-
11.1.1.jar:/u01/applmgr/apps/apps_st/comm/java/classes/rfi/retail-public-
security-api/lib/jps-wls-
11.1.1.jar:/u01/applmgr/apps/apps_st/comm/java/classes/rfi/retail-public-
security-api/lib/identitystore-
11.1.1.jar:/u01/applmgr/apps/apps_st/comm/java/classes/rfi/retail-public-
security-api/lib/oraclepki-
11.1.1.jar:/u01/applmgr/apps/apps_st/comm/java/classes/rfi/retail-public-
security-api/lib/osdt_core-
11.1.1.jar:/u01/applmgr/apps/apps_st/comm/java/classes/rfi/retail-public-
security-api/lib/osdt_cert-
11.1.1.jar:/u01/applmgr/apps/apps_st/comm/java/classes/rfi/retail-public-
security-api/lib/sjsxp-
1.0.2.jar:/u01/applmgr/apps/apps_st/comm/java/classes/rfi/retail-public-
security-api/lib/jsr173-
1.0.jar:/u01/applmgr/apps/apps_st/comm/java/classes/rfi/rfi-ews-event-
handler/ews-financial-common-
14.0.0.jar:/u01/applmgr/apps/apps_st/comm/java/classes/rfi/retail-public-
security-api/lib/retail-public-security-api-14.0.0.jar</CLASSPATH>
```

```

    <AF_CLASSPATH oa_var="s_adovar_afclasspath"
osd="/unix/u01/applmgr/apps/apps_st/comm/java/classes/rfi/retail-public-
security-api/lib/commons-cli-
1.2.jar:/u01/applmgr/apps/apps_st/comm/java/classes/rfi/retail-public-
security-api/lib/commons-logging-
1.1.1.jar:/u01/applmgr/apps/apps_st/comm/java/classes/rfi/retail-public-
security-api/lib/jps-api-
11.1.1.jar:/u01/applmgr/apps/apps_st/comm/java/classes/rfi/retail-public-
security-api/lib/jps-internal-
11.1.1.jar:/u01/applmgr/apps/apps_st/comm/java/classes/rfi/retail-public-
security-api/lib/jps-common-
11.1.1.jar:/u01/applmgr/apps/apps_st/comm/java/classes/rfi/retail-public-
security-api/lib/jps-unsupported-api-
11.1.1.jar:/u01/applmgr/apps/apps_st/comm/java/classes/rfi/retail-public-
security-api/lib/jacc-spi-
11.1.1.jar:/u01/applmgr/apps/apps_st/comm/java/classes/rfi/retail-public-
security-api/lib/jacc-api-
10.1.3.jar:/u01/applmgr/apps/apps_st/comm/java/classes/rfi/retail-public-
security-api/lib/jps-ee-
11.1.1.jar:/u01/applmgr/apps/apps_st/comm/java/classes/rfi/retail-public-
security-api/lib/jps-manifest-
11.1.1.jar:/u01/applmgr/apps/apps_st/comm/java/classes/rfi/retail-public-
security-api/lib/jps-mbeans-
11.1.1.jar:/u01/applmgr/apps/apps_st/comm/java/classes/rfi/retail-public-
security-api/lib/jps-upgrade-
11.1.1.jar:/u01/applmgr/apps/apps_st/comm/java/classes/rfi/retail-public-
security-api/lib/jps-wls-
11.1.1.jar:/u01/applmgr/apps/apps_st/comm/java/classes/rfi/retail-public-
security-api/lib/identitystore-
11.1.1.jar:/u01/applmgr/apps/apps_st/comm/java/classes/rfi/retail-public-
security-api/lib/oraclepki-
11.1.1.jar:/u01/applmgr/apps/apps_st/comm/java/classes/rfi/retail-public-
security-api/lib/osdt_core-
11.1.1.jar:/u01/applmgr/apps/apps_st/comm/java/classes/rfi/retail-public-
security-api/lib/osdt_cert-
11.1.1.jar:/u01/applmgr/apps/apps_st/comm/java/classes/rfi/retail-public-
security-api/lib/sjsxp-
1.0.2.jar:/u01/applmgr/apps/apps_st/comm/java/classes/rfi/retail-public-
security-api/lib/jsr173-
1.0.jar:/u01/applmgr/apps/apps_st/comm/java/classes/rfi/retail-public-
security-api/lib/retail-public-security-api-
14.0.0.jar:/u01/app/R12RET/apr12ret/applmgr/apps/tech_st/10.1.3/appsutil/jdk/li
ib/dt.jar:/u01/app/R12RET/apr12ret/applmgr/apps/tech_st/10.1.3/appsutil/jdk/li
b/tools.jar:/u01/app/R12RET/apr12ret/applmgr/apps/tech_st/10.1.3/appsutil/jdk/
jre/lib/rt.jar:/u01/app/R12RET/apr12ret/applmgr/apps/apps_st/comm/java/lib/app
sberg2.zip:/u01/app/R12RET/apr12ret/applmgr/apps/apps_st/comm/java/classes:/u0
1/app/R12RET/apr12ret/applmgr/apps/apps_st/comm/java/classes/rfi/rfi-ebs-
event-handler/ebs-financial-common-14.0.0.jar</AF_CLASSPATH>

```

9. Go to \$ADMIN\_SCRIPTS\_HOME and run adautocfg.sh (Auto config).

```

cd $ADMIN_SCRIPTS_HOME
sh adautocfg.sh

```

10. Enter the APPS user password.

11. To verify the values, go to the \$APPL\_CONFIG\_HOME/admin folder and check CLASSPATH and AF\_CLASSPATH in adovars.env.

```

cd $APPL_CONFIG_HOME/admin
view adovars.env

```

12. Stop and restart Concurrent Manager.

- a. Go to \$ADMIN\_SCRIPTS\_HOME

```

cd $ADMIN_SCRIPTS_HOME

```

- b. Run `sh admctl stop <db_user>/<db_password> (sh admctl.sh stop apps/**** )`
- c. Make sure the Concurrent Manager is in "Not Active" status before running the next command. `sh admctl status <db_user>/<db_password> (sh admctl.sh status apps/**** )`
- d. Run `sh admctl start <db_user>/<db_password> **** )`
- e. Stop and restart the server  
`sh adstpall.sh apps/****`  
`sh adstrtal.sh apps/****`

---

---

**Note:** If the Concurrent Manager is Not Active, start Concurrent Manager – `sh admctl start apps/****`

---

---

- f. Verify the values.
    - a. Close the telnet session, start a new telnet session, and run the env file (`./apps.env`)
    - b. `echo $CLASSPATH` and `$AF_CLASSPATH`  
The added jar file should be there.
13. Stop and restart the web server.  
Go to `$ADMIN_SCRIPTS_HOME`.  
`adapctl.sh stopall`  
`adapctl.sh startall`



---



---

## ODI Setup Tasks

### Prerequisite

It is assumed Oracle Data Integrator has already been configured with the appropriate details for your installation. This ODI installation location is referred to as ODI\_INSTALL\_DIR for the remainder of this chapter.

### Copy ODI-Specific Files

1. Log in to the UNIX server as a user who has sufficient access to run sqlplus from the Oracle Database installation.
2. Create the retail-financial-integration-solution in <INSTALL\_DIR> folder.
3. From the ORFI server, copy the <INSTALL\_DIR>/retail-financial-integration-solution/etl-based-integration folder to <INSTALL\_DIR>/retail-financial-integration-solution folder on the ODI server.

---



---

**Note:** All references to the ODI server are indicative of RfiBulkServer.

---



---

### Create Tablespaces

Before you run the ODI Master and Work database user, make sure that the following tablespace has been created in the database: ODI\_DATA. Below is a sample tablespace creation statement for this tablespace. Oracle Retail recommends the use of locally managed tablespaces with automatic extent and segment space management.

---



---

**Note:** These tablespaces are not sized for a production environment.

---



---

```
CREATE TABLESPACE ODI_DATA DATAFILE
'<datafile_path>/odi_data01.dbf' SIZE 500M
AUTOEXTEND ON NEXT 100M MAXSIZE 2000M
EXTENT MANAGEMENT LOCAL
SEGMENT SPACE MANAGEMENT AUTO
;
```

### Create the ODI Master Repository Database User

You must create an ODI Master Repository schema using a *creat\_user.sql* that comes with installer distribution. This will be used to execute ODI Interface at run time. This create\_user.sql script can be used for this:

```
$INSTALL_DIR/retail-financial-integration-solution/etl-based-integration/retail-to-
ebsfin-etl-flows/setup-data/ddl/create_user.sql
```

The script takes three arguments on the command line in sqlplus: username, password, and ODI Master tablespace.

---



---

**Example:** SQL> @create\_user.sql <ODI Master Schema> <ODI Master Schema Password> <ODI Master tablespace name>

---



---

Review this script and run it as a user with adequate permissions, such as SYSTEM.

## Create the ODI Work Repository Database User

You must create an ODI Work Repository schema using a *creat\_user.sql* that is included with the installer distribution. This will be used to execute ODI Interface at run time. This *create\_user.sql* script can be used for this:

```
$INSTALL_DIR/retail-financial-integration-solution/etl-based-integration/retail-to-  
ebsfin-etl-flows/setup-data/ddl/create_user.sql
```

The script takes three arguments on the command line in sqlplus: username, password, and ODI Work tablespace.

---

---

**Example:** SQL> @create\_user.sql <ODI Work Schema> <ODI  
Work Schema Password> <ODI Work tablespace name>

---

---

Review this script and run it as a user with adequate permissions, such as SYSTEM.

## ODI – Set Up Master Repository and Work Repository

---

---

**Note:** If you have not had a master and work repository created, you need to create it beforehand as described in the Oracle Data Integrator administrator guide or follow the steps given below.

---

---

## Create Master Repository

Prerequisite:

- Make sure database schemas for Master and Work Repositories are present in the ODI database.

---

---

**Note:** These schema creation steps are done as part of ODI setup tasks in the current chapter 7.

---

---

- Make sure the RFI\_ODI\_TEMP schema exists in the E-Business Suite database.

---

---

**Note:** These schema creation steps are done as part of “Create the ODI Staging Database User” in chapter 5.

---

---

- Make sure the ORFI infrastructure database setup is completed.

---

---

**Note:** These schema creation steps are done as part of “Create the ORFI Database User” in chapter 3.

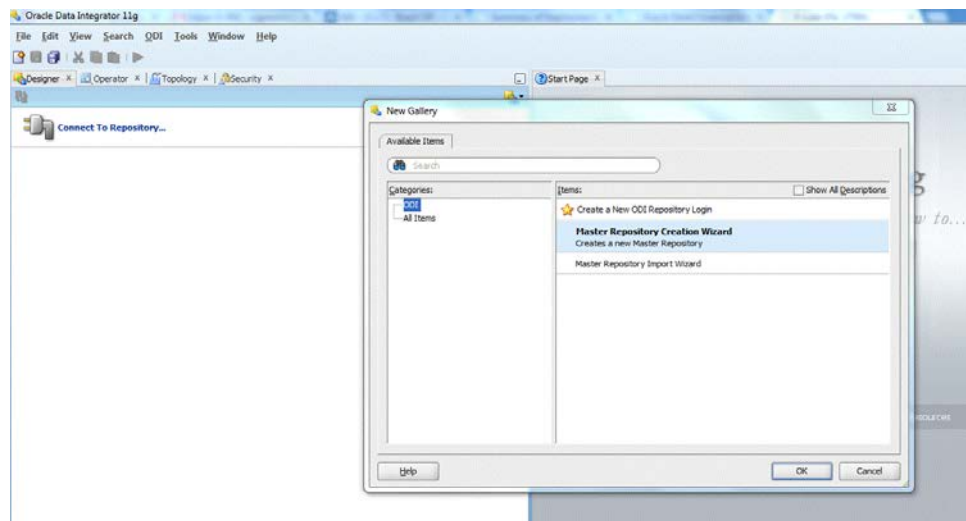
---

---

- Give database administrator privileges to the schema in the E-Business Suite database.

Use the following procedure to create the Master Repository:

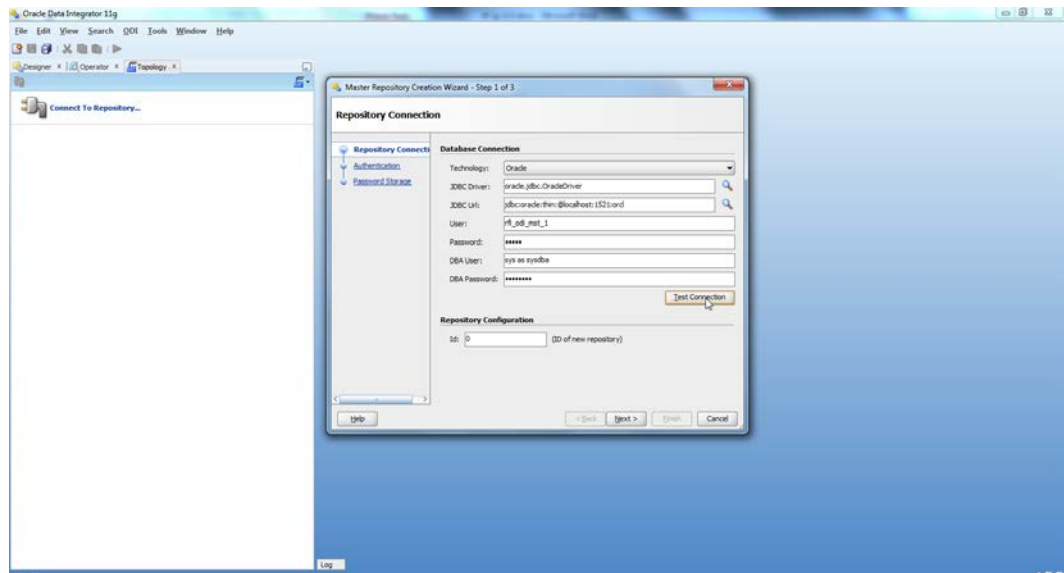
4. Launch Oracle Data Integrator (ODI) Studio to create a Master Repository:  
Click File→New and select “Master Repository Creation Wizard” and click **OK**.



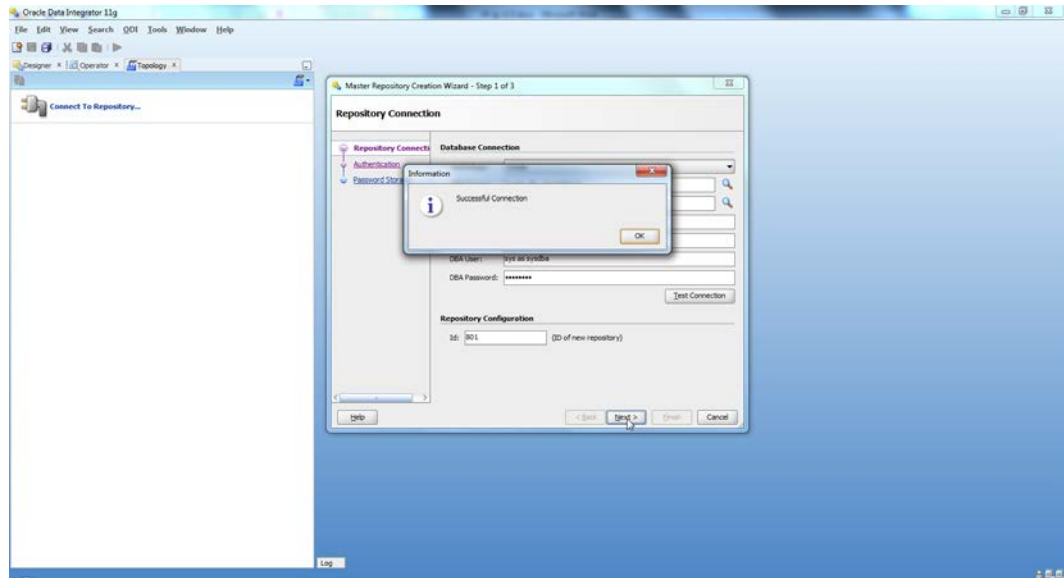
5. Enter the Master Repository Database connection details and click **Next**.
  - Database Connection – Enter valid Master Repository schema details.

**Note:** In JDBC url field, use the OdiMasterDataSource/  
jdbcUrl entered in rfi-deployment-env-info.json file.  
You have to enter sysdba credentials in DBA User and DBA  
Password fields.

- Repository Configuration – Enter any ID other than 804 or 805 in the Id field.



6. Test your credentials information using the **Test Connection** button. If you are successful, click **OK** in the Information popup and then click **Next**.

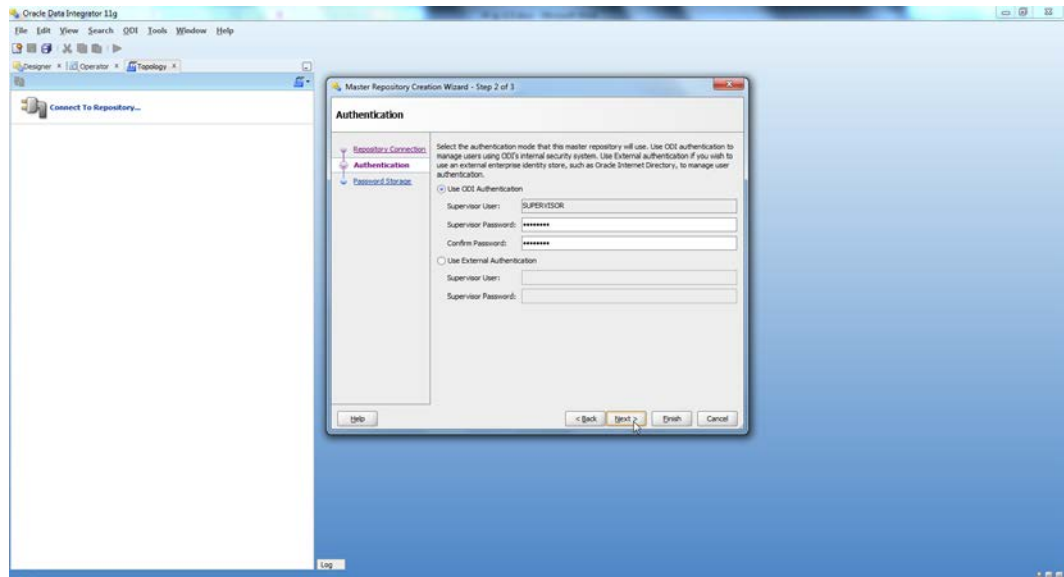


7. Enter *<supervisor password>* and click **Next**.

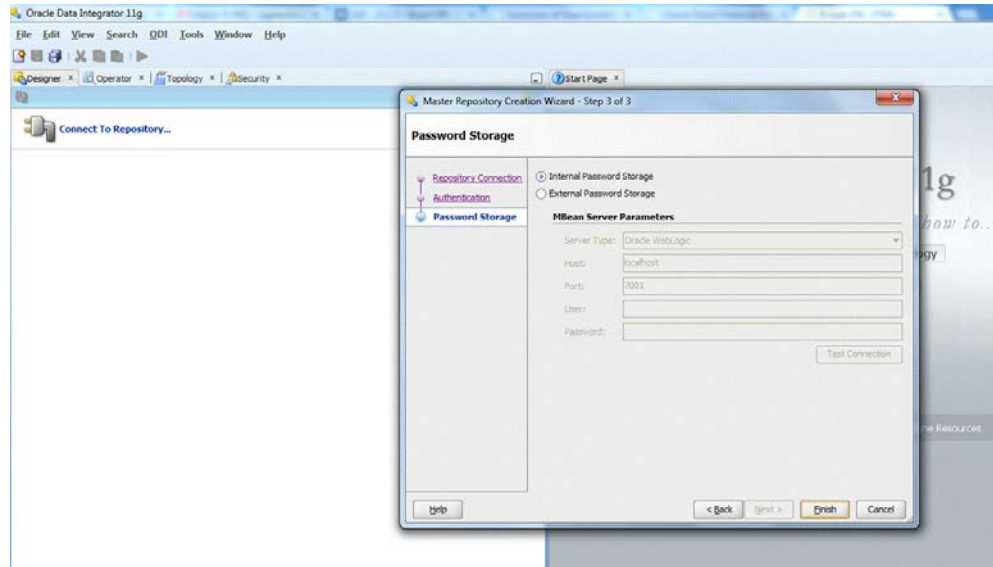
---

**Note:** This password will be used in further installation steps, so keep a record of it.

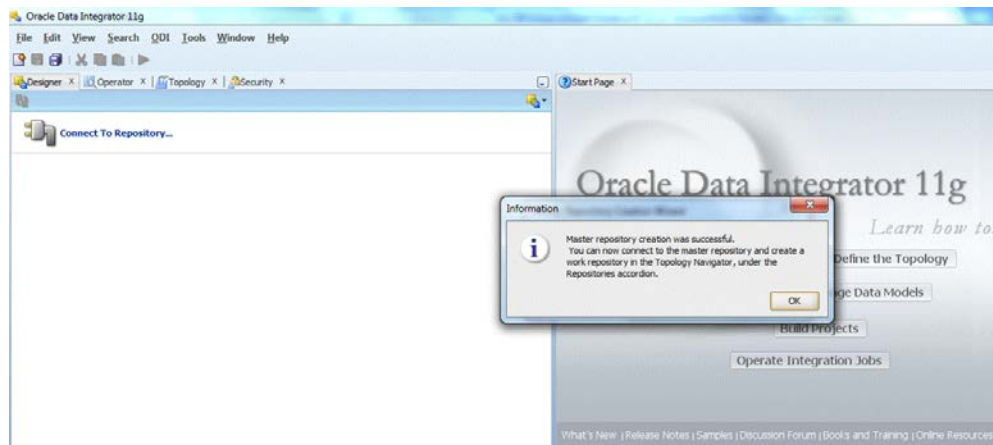
---



8. Click **Finish**.



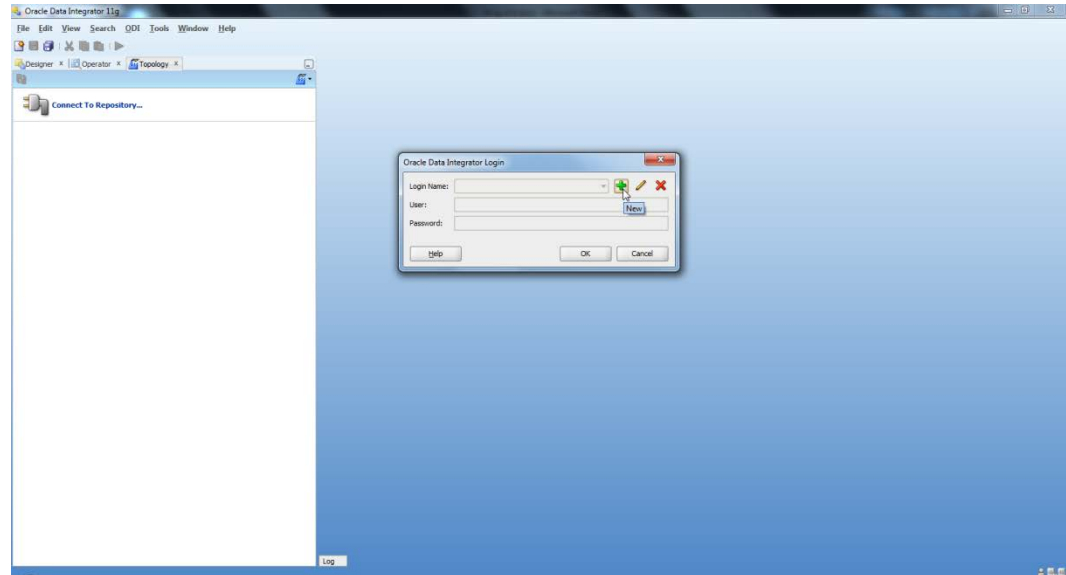
9. Click OK.



## Create Work Repository

Use the following procedure to create the Work Repository:

1. Select the ODI Menu → Connect option to log in to the Master Repository in Oracle Data Integrator (ODI) Studio to create a Work Repository.
2. Create Master Repository login credetionals by selecting the + button from the Oracle Data Integrator Login dialog.



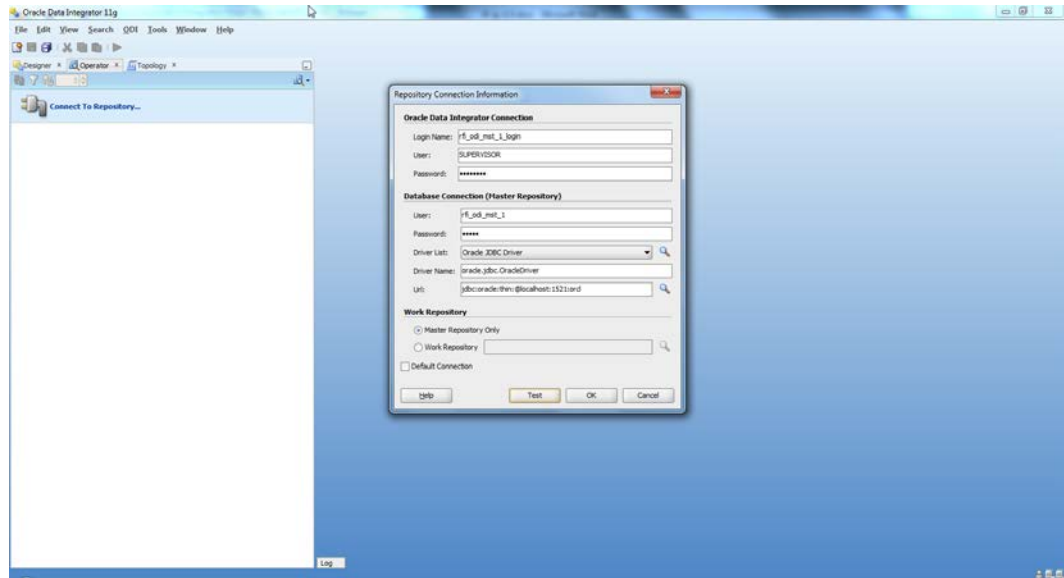
3. Update the Repository Connection Information as below:
  - a. Oracle Data Integrator Connection:
    - Login Name: <Login Name>
    - User: <Enter "SUPERVISOR" in this field>
    - Password: <supervisor password>

---

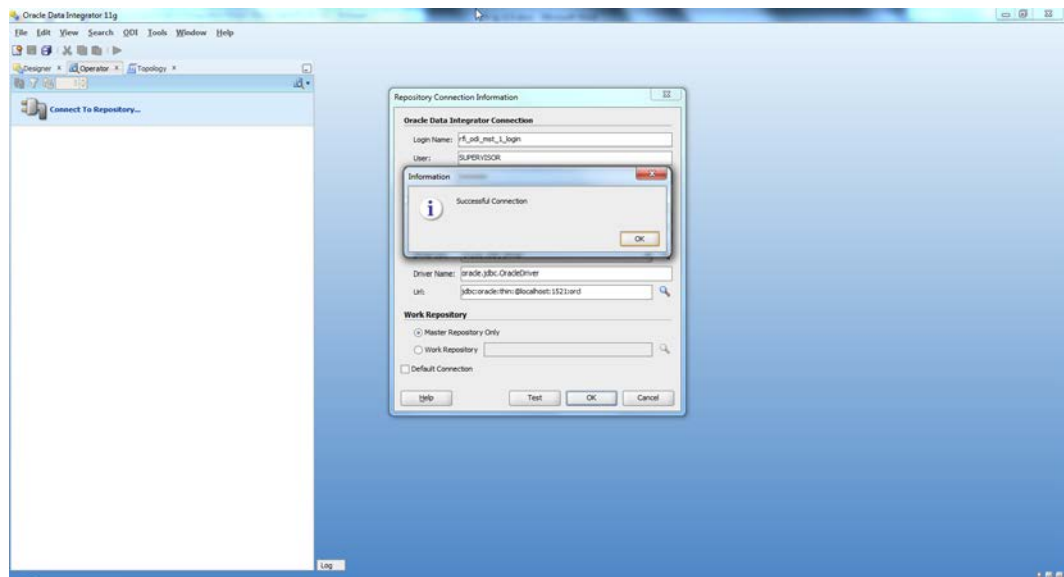
**Note:** See ODI documentation for information on users with the correct (supervisor level) permissions. The SUPERVISOR user is created by ODI and has the correct permissions by default.

---

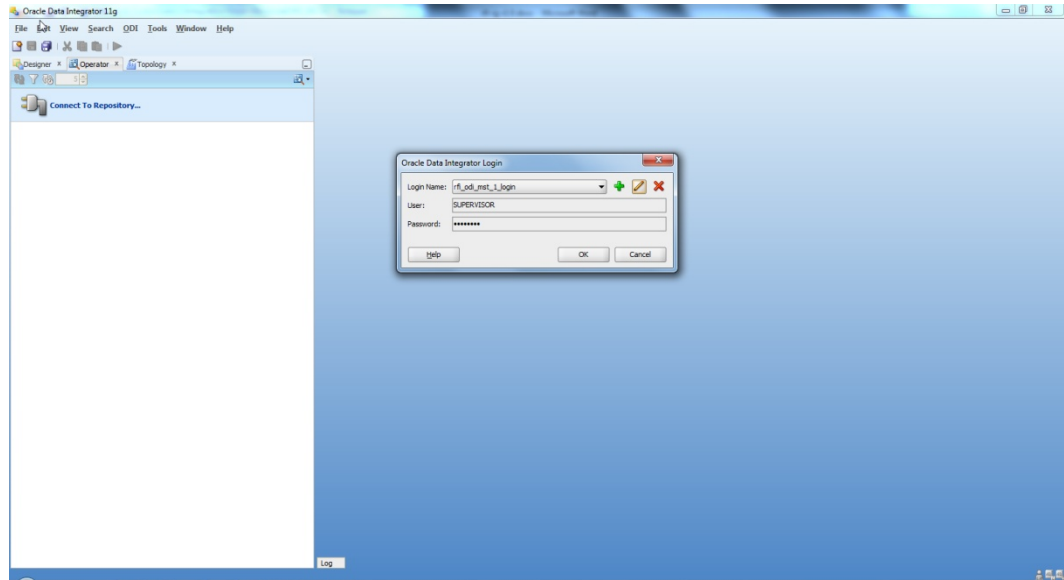
- b. Database Connection (Master Repository):
    - Enter Master Repository database credetionals for User and Password fields.
    - Select "Oracle JDBC Driver" from the drop-down list for Driver List field.
    - Enter Url (use the OdiMasterDataSource/ jdbcUrl entered in rfi-deployment-env-info.json file) field as shown below:  
 jdbc:oracle:thin:@<host>:<port>:<sid>
  - c. Work Repository:
    - Select the Master Repository Only option.



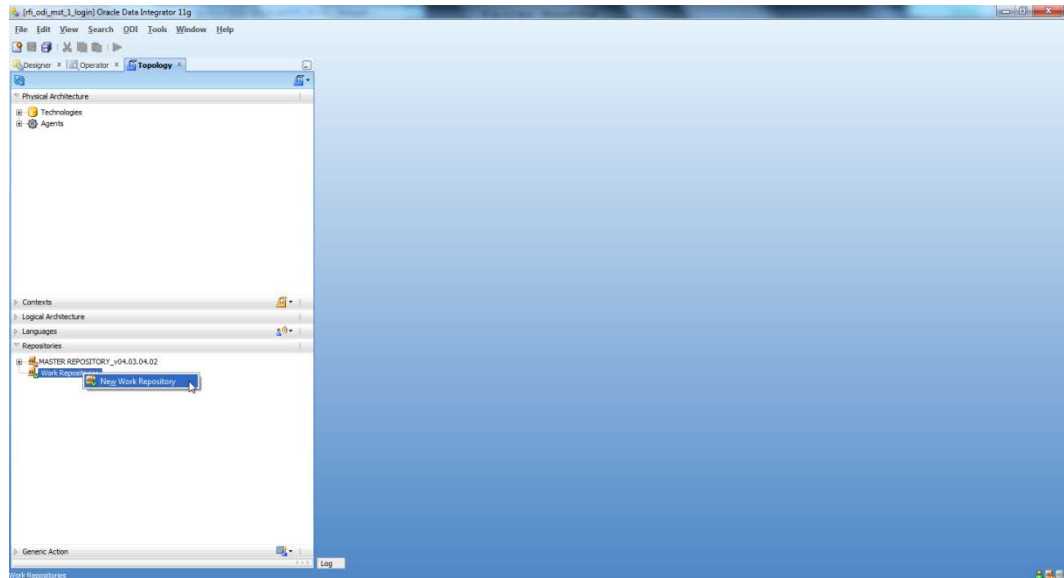
4. Test your credentials information using the **Test** button. If you are successful then click **OK**.



5. Select **OK** from Oracle Data Integrator Login dialog.

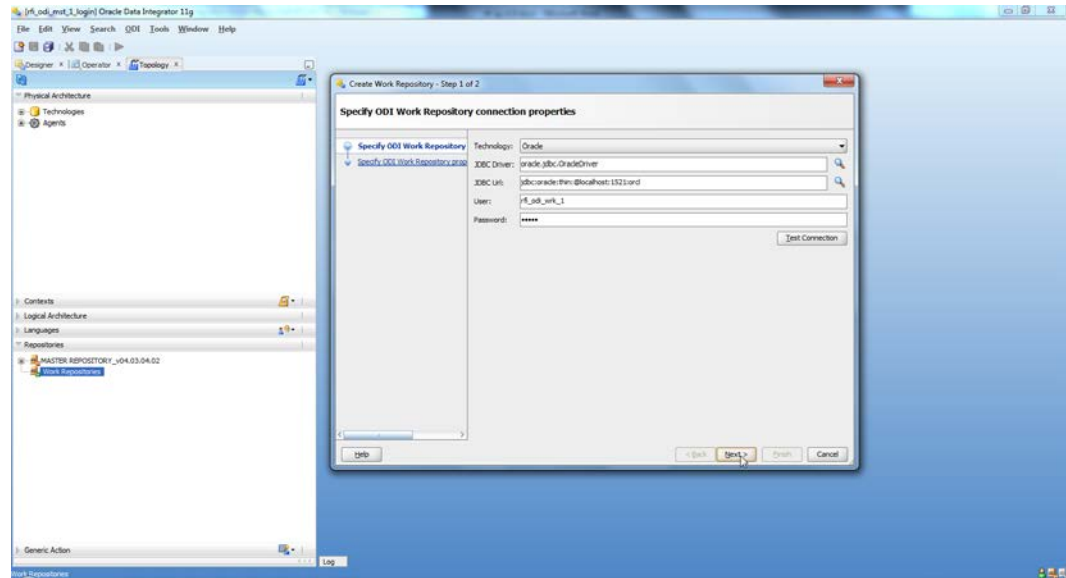


6. From the Topology tab, select Repositories and then right-click on the Work Repositories. Select the New Work Repository option.

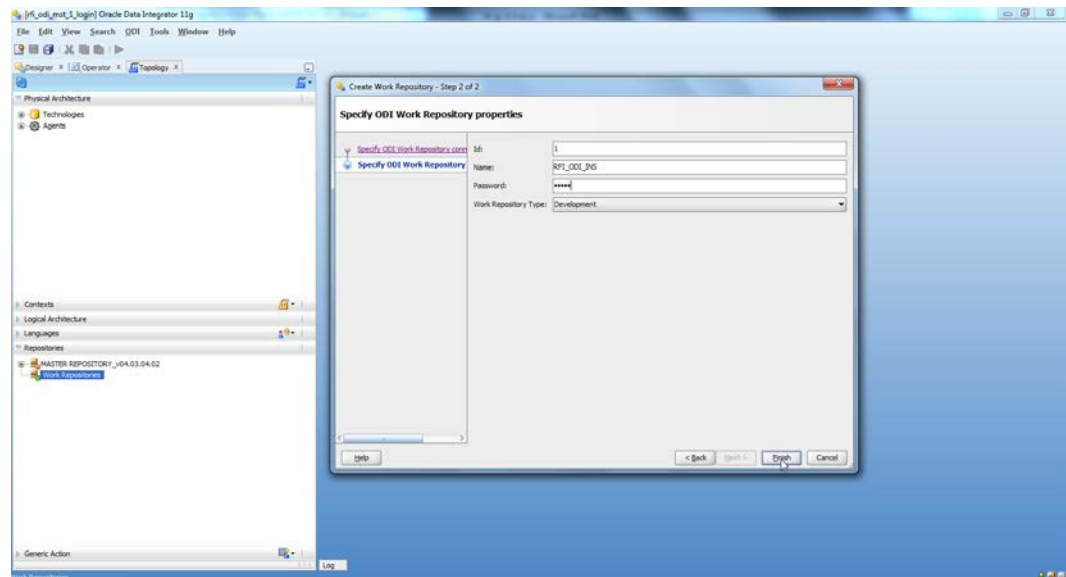


7. Enter the work repository database credentials details.
8. Test your credentials information using the **Test** button. If you are successful then click **Next**.

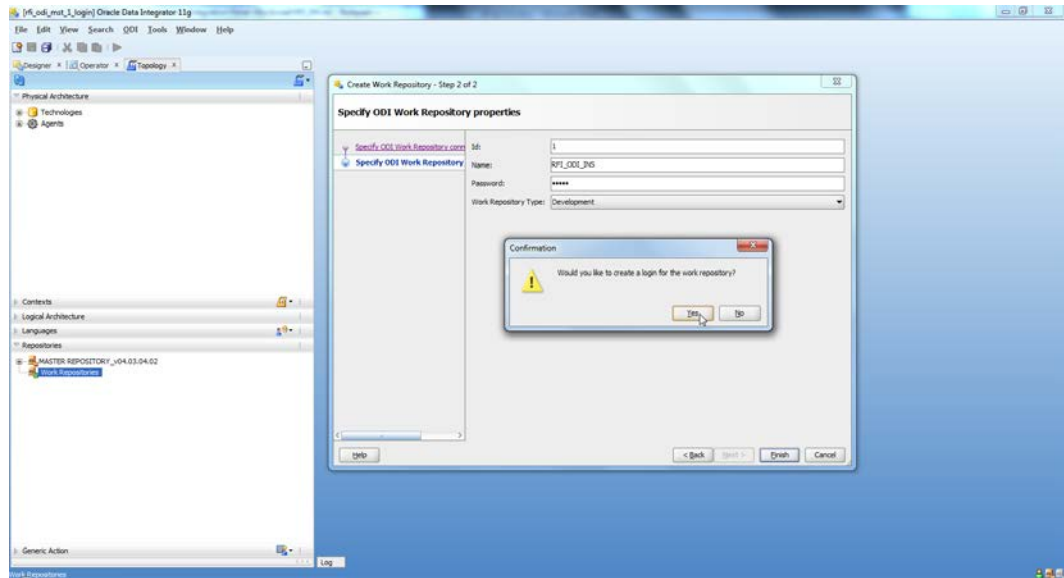




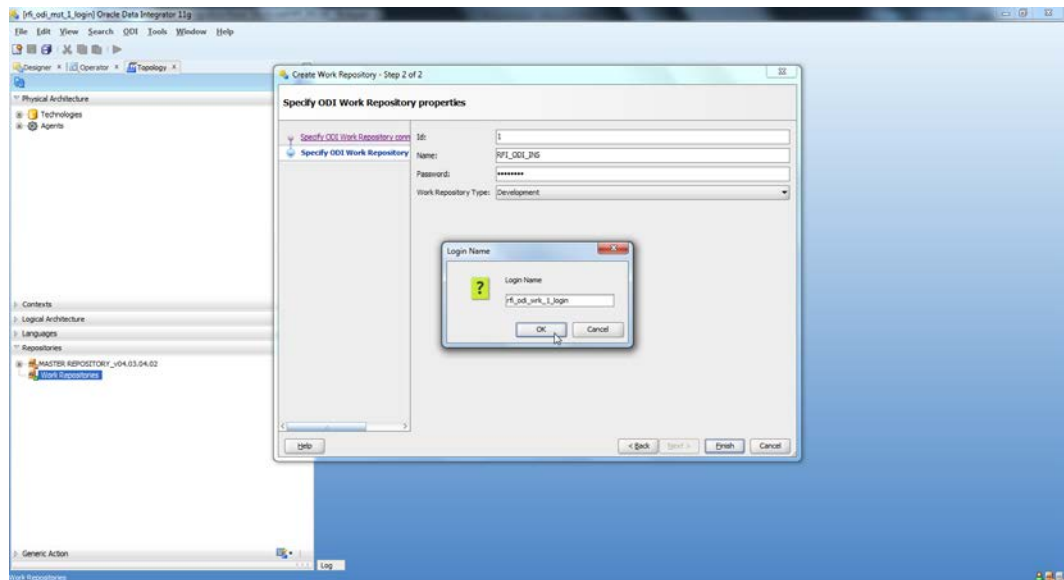
9. Update ODI Work Repository properties:
  - a. Enter any ID other than 804 or 805 in the Id field.
  - b. Enter Name and Password (should be SUPERVISOR user and <supervisor password>) for work repository and click **Finish**.



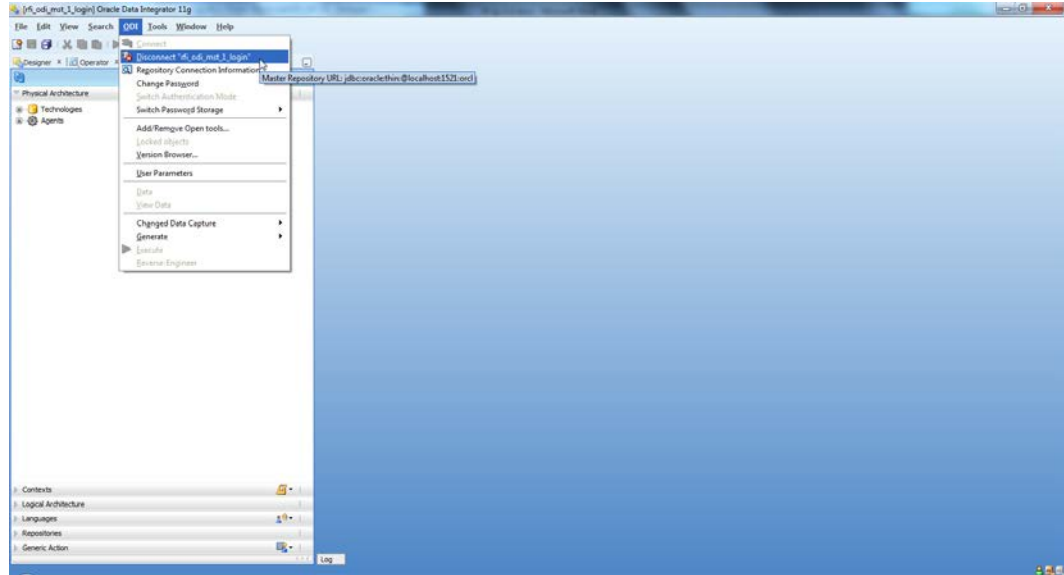
10. Click **Yes** to create an ODI login for the work repository.



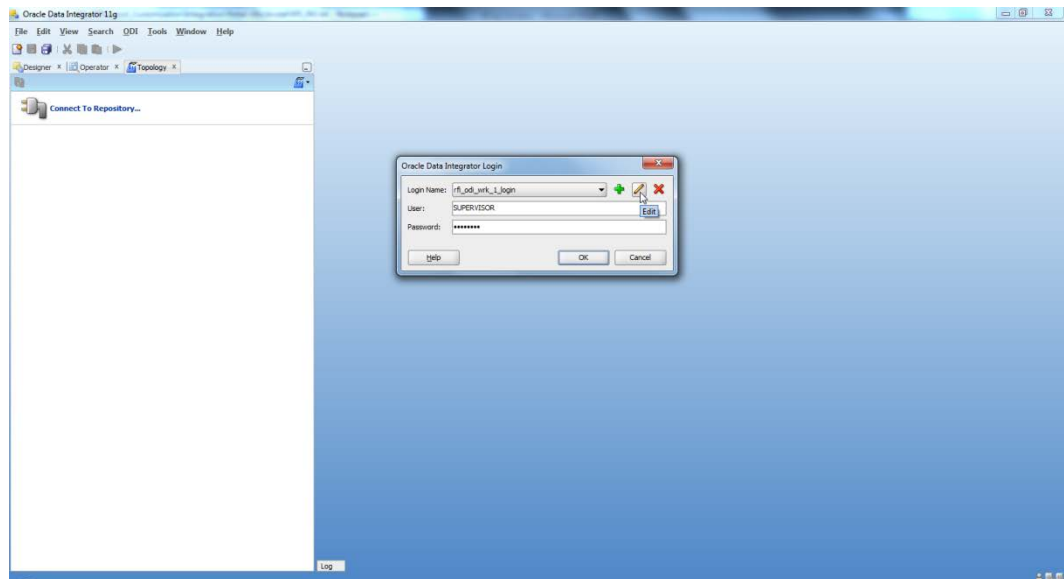
11. Enter the ODI work repository login name in the dialog.



12. Select the ODI Menu→Disconnect option to connect to the Work Repository.

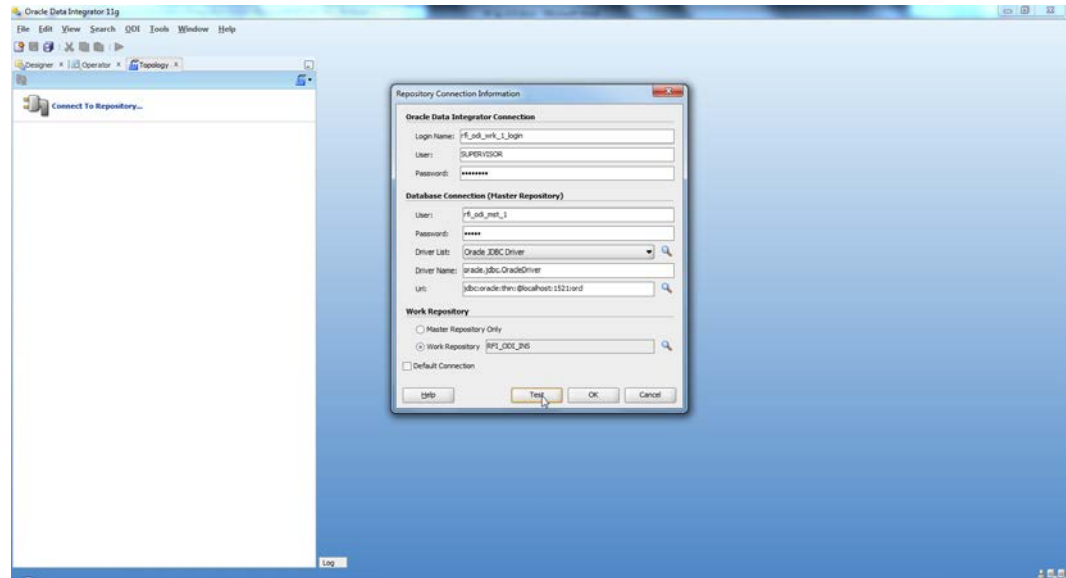


13. Select the ODI Menu → Connect option.
  - a. From the ODI Login popup, select Login Name from dropdown list (select the name you created in step 7).
  - b. Enter user as "SUPERVISOR".
  - c. Enter <supervisor password>.
  - d. Select the Edit option.

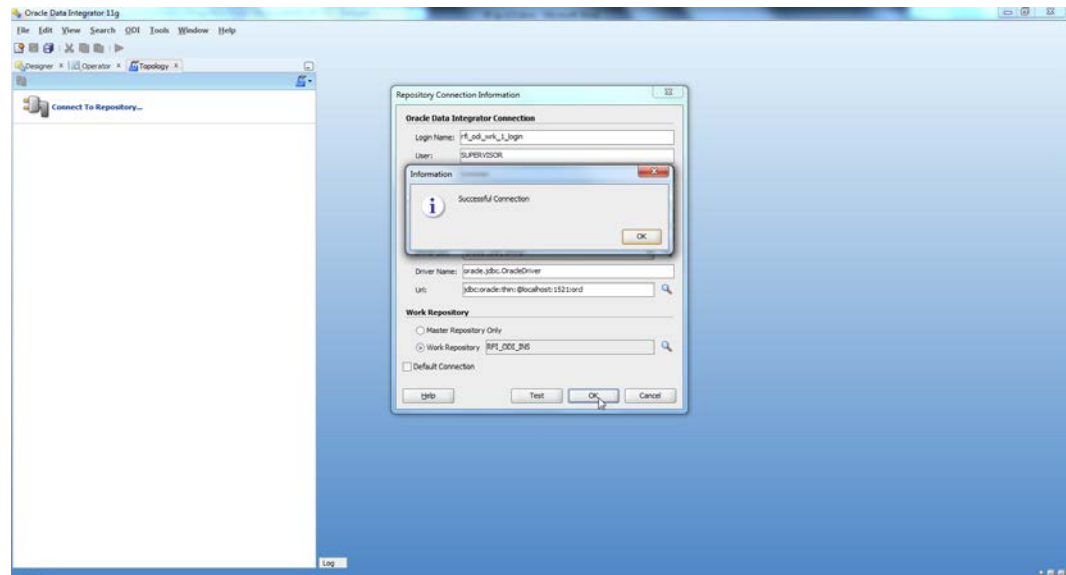


14. Validate the Repository Connection Information:
  - a. Oracle Data Integrator Connection
    - Login Name: <work repository login name>
    - User: <"SUPERVISOR">
    - Password: <supervisor password>

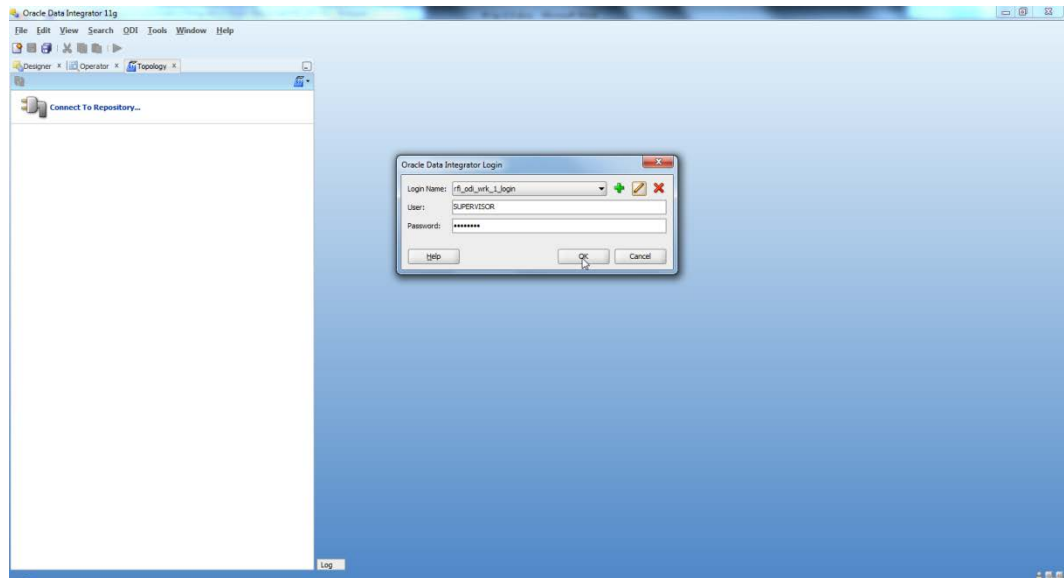
- b. Database Connection (Master Repository)**
  - Validate the Master Repository database details.
- c. Work Repository**
  - Select the Work Repository option and select the repository you just created.



15. Test your credentials information using the **Test** button. If you are successful then click **OK**.



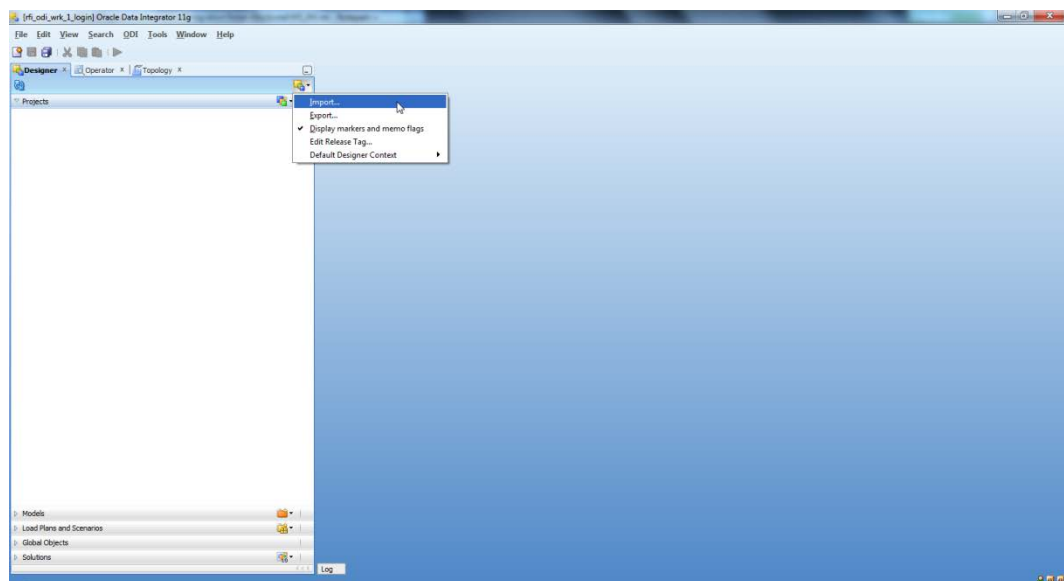
16. Select **OK** from Oracle Data Integrator Login dialog.



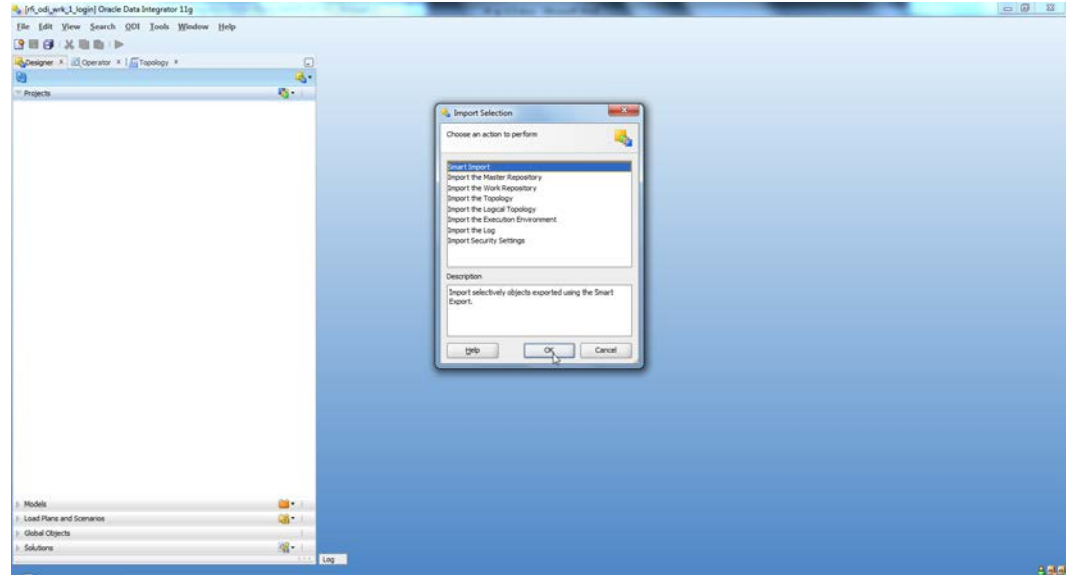
## Import ODI Interfaces

Use the following procedure to import ODI interfaces using Smart Import:

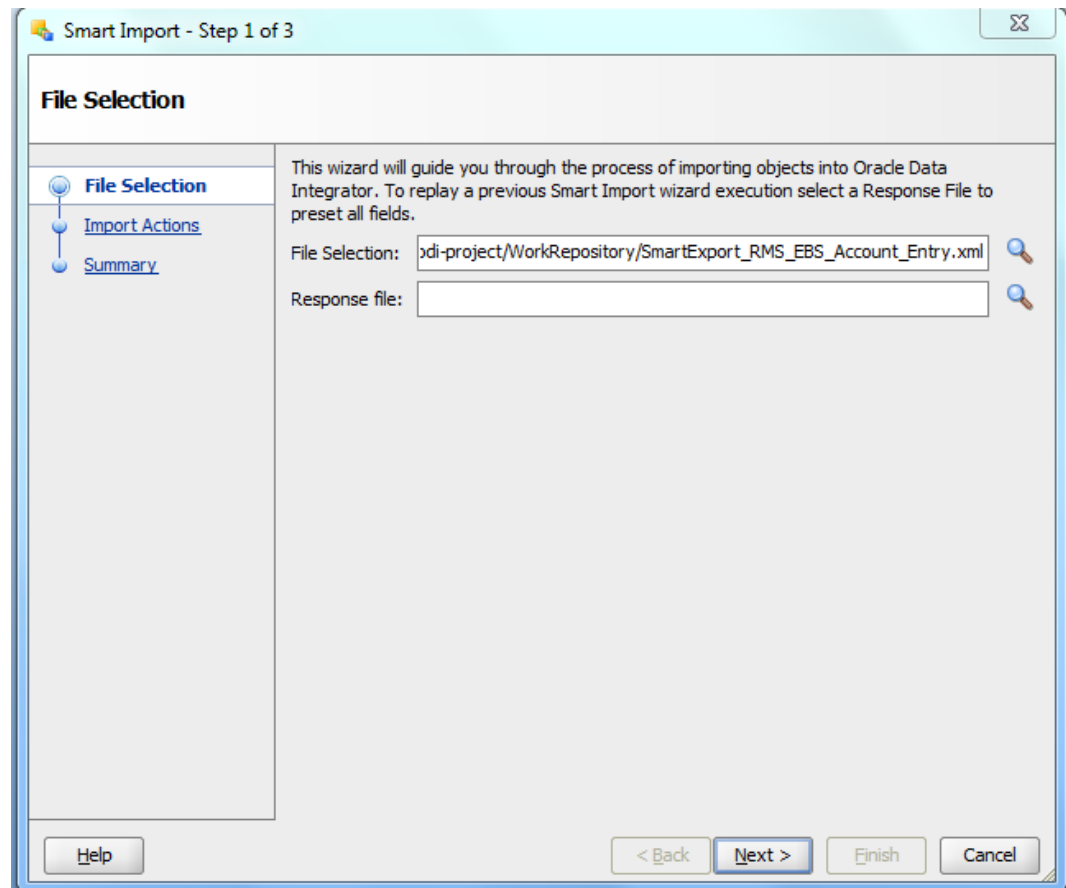
1. Log in to the Work Repository in Oracle Data Integrator (ODI) Studio to import all the interfaces:
2. Select the Import option from the Designer tab.



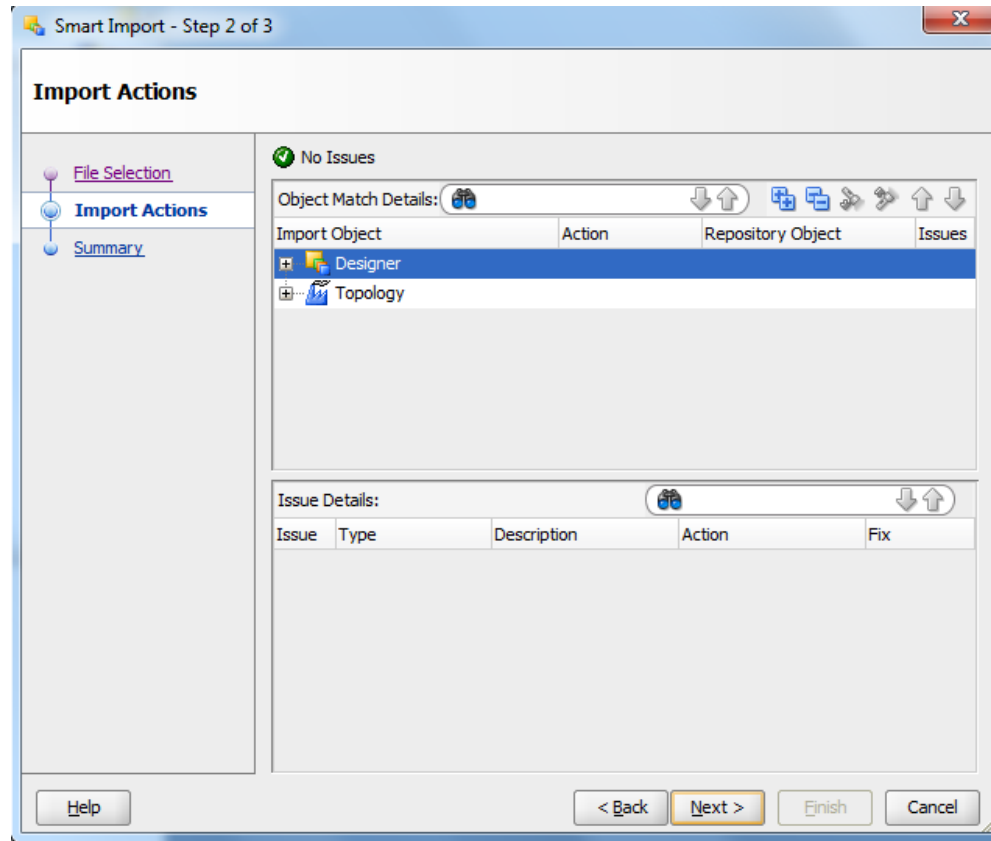
3. Select the Smart Import option on the Import Selection dialog and click **OK**.



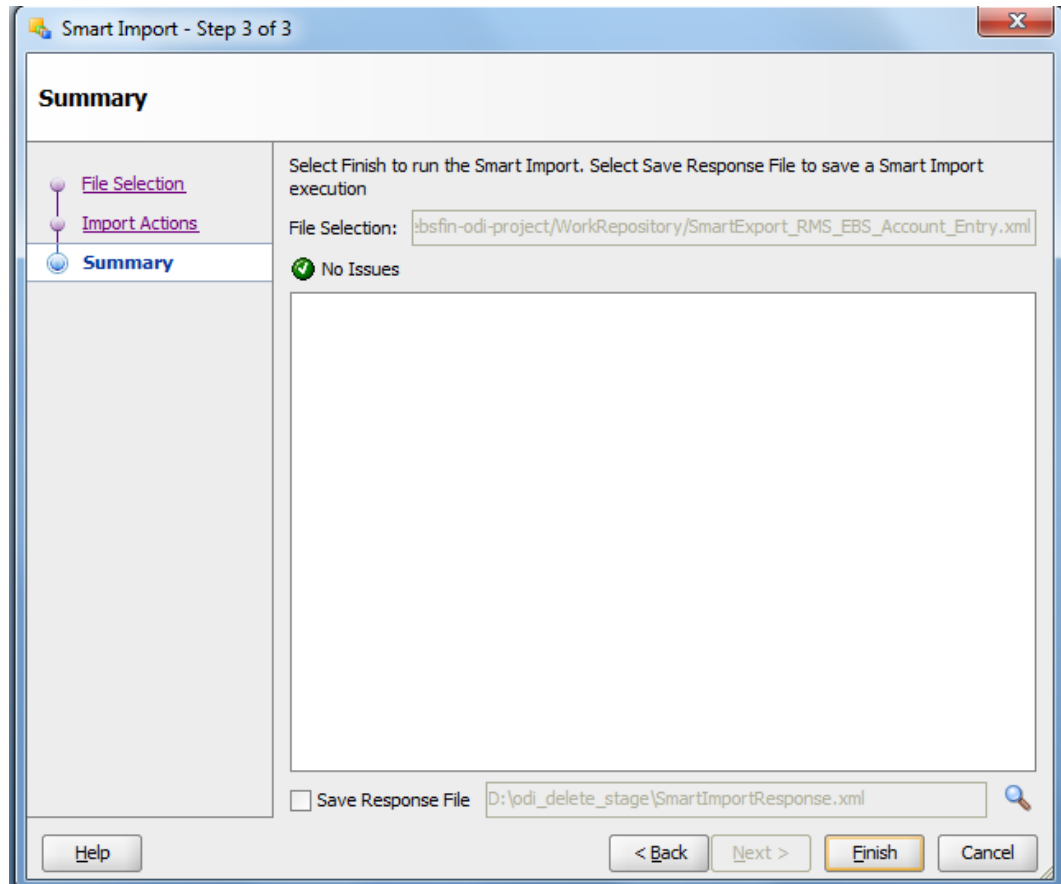
4. Select SmartExport\_RMS\_EBS\_Account\_Entry.xml file in the File Selection Field and click Next. This file can be found in \$INSTALL\_DIR/retail-financial-integration-solution/etl-based-integration/retail-to-ebfin-etl-flows/retail-to-ebfin-odi-project/WorkRepository/.



5. Click Next.



6. Click **Finish**.

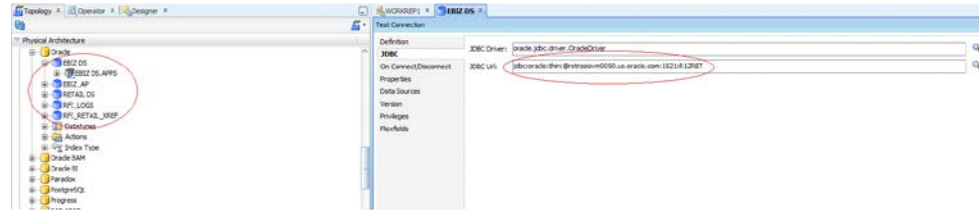


7. Similarly, perform Smart Import for the other ODI Interfaces.
  - SmartExport\_ReIM\_EBS\_Account\_Entry.xml
  - SmartExport\_ReIM\_EBS\_Invoice\_Entry.xml



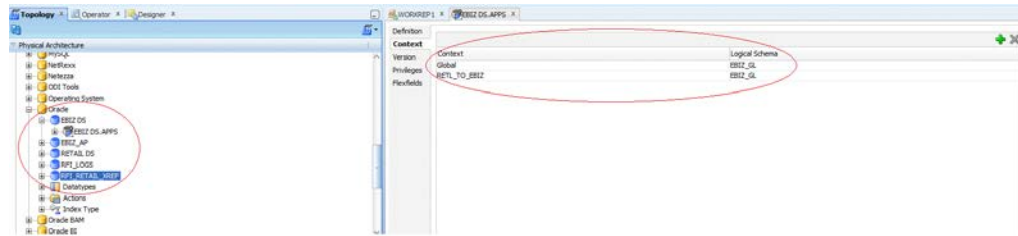
## Update Connection Information

In Topology, under Physical Architecture, Technologies → Oracle, update the Database Connection details in the Physical Server and Physical schema as shown in the table below.



Physical Server (Data Server)			Physical Schema	
Name	Definition > Connection	JDBC	Schema (Schema)	Schema (Work Schema)
EBIZ_DS	User: <APPS Schema Name> Password: <APPS Schema Password>	Update EBS JDBCUrl	APPS Schema	RFI_ODI_TEMP Schema
EBIZ_AP	User: <AP Schema Name> Password: <AP Schema Password>	Update EBS JDBCUrl	AP Schema	RFI_ODI_TEMP Schema
RETAIL_DS	User: <RMS User Schema Name> Password: <RMS User Schema Password>	Update RMS JDBCUrl	RMS Schema Owner	RMS Schema Owner
RFI_LOGS	User: <ORFI Schema Name> Password: <ORFI Schema Password>	Update ORFI JDBCUrl	ORFI Schema	ORFI Schema
RFI_RETAIL_X REF	User: <ORFI Schema Name> Password: <ORFI Schema Password>	Update ORFI JDBCUrl	ORFI Schema	ORFI Schema

1. For EBIZ\_DS, EBIZ\_AP, provide the E-Business Suite database connection.
2. For RETAIL\_DS, provide the Retail database connection.
3. For RFI\_LOGS, RFI\_RETAIL\_XREF provide the ORFI Infrastructure database connection.
4. Click **Test Connection** on the physical server to verify that the connection information is correct.
5. In the physical schema, verify that the context (Global and RETL\_TO\_EBIZ) is mapped to the logical schemas as shown in the table below. If the mapping is missing, map the logical schemas as shown in the table below.



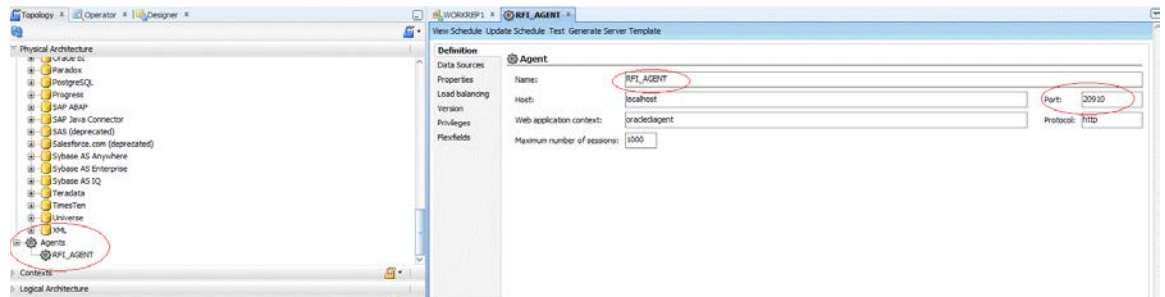
Physical Schema	Logical Schema
EBIZ_DS_APPS	EBIZ_GL
EBIZ_AP.AP	EBIZ_AP
RETAIL_DS.RMS	Retail
RFI_LOGS.RFI	RFI_LOGS
RFI_RETAIL_XREF.RFI	RFI_RETAIL_XREF

## Scenario Test

In this section, you need to do similar things to the three packages in ORFI. In this guide we only use the Migrate RMS to EBIZ Acc Entry Package, for example.

## Scenario

In ODI Topology, navigate to Physical Architecture → Agents.  
Make sure the RFI\_AGENT is available and default to port 20910



## Run Agent Scheduler

The following scripts are located in <ODI\_INSTALL\_DIR>/oracledi/agent/bin/.

You need to configure odiparams.sh script to schedule an ODI agent. This odiparams.sh script is located in <ODI\_INSTALL\_DIR>/oracledi/agent/bin/odiparams.sh

1. You need to run encode.sh script to generate your password in the encoded format and this is used in odiparams.sh script.

The script takes one argument on the command line: password.

---

**Example:** prompt\$ encode <password>

---

2. sh encode.sh <password>
3. Modify odiparams file. Set the following lines as indicated in order to connect them to the work repository. For example:

### In Windows OS (odiparams.bat),

```
set ODI_MASTER_DRIVER=oracle.jdbc.driver.OracleDriver
set ODI_MASTER_URL=<JDBC Connection URL to ODI>
set ODI_MASTER_USER=<ODI Master Schema>
set ODI_MASTER_ENCODED_PASS=<ODI Master Schema password>
set ODI_SUPERVISOR=SUPERVISOR
set ODI_SUPERVISOR_ENCODED_PASS=<ODI SUPERVISOR password>
set ODI_SECU_WORK_REP=<ODI Work Repository name>
```

### In Linux/Unix OS (odiparams.sh),

```
ODI_MASTER_DRIVER=oracle.jdbc.driver.OracleDriver
ODI_MASTER_URL=<JDBC Connection URL to ODI>
ODI_MASTER_USER=<ODI Master Schema>
ODI_MASTER_ENCODED_PASS=<ODI Master Schema password>
ODI_SUPERVISOR=SUPERVISOR
ODI_SUPERVISOR_ENCODED_PASS=<ODI SUPERVISOR password>
ODI_SECU_WORK_REP=<ODI Work Repository name>
```

4. Use the agent.sh script to start an agent.

---

**Example:**

```
prompt$ agent "-NAME=<physical agent name>"
prompt$ agent "-NAME=RFI_AGENT"
sh agent.sh "-NAME=<physical agent name>"
```

---

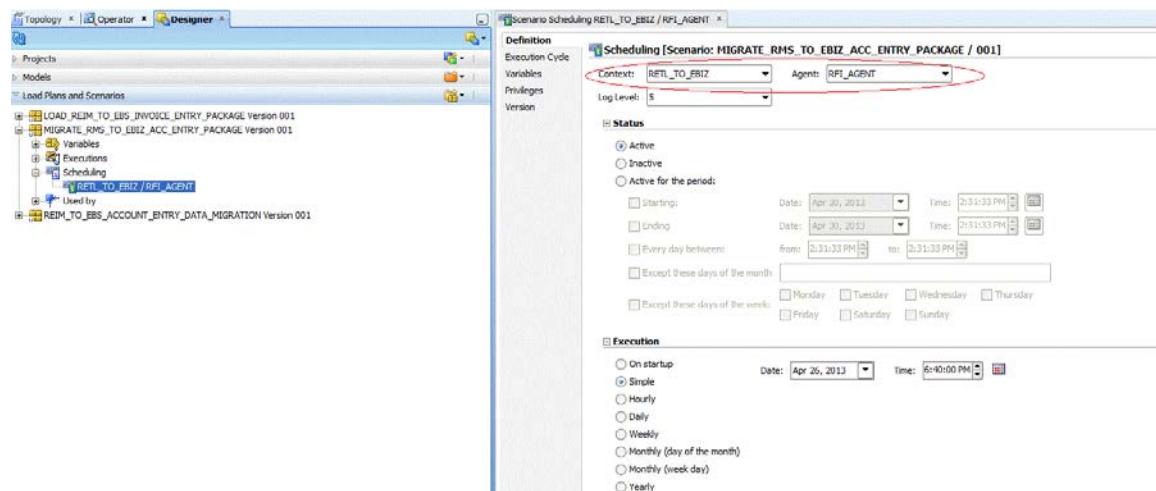
You should see a message that the agent is started successfully.

5. Test the agent to ensure it is up and running. Click on the Test portion of the menu (View Schedule, Update Schedule, Test, Generate Server Template). Agent Test Successful message should be displayed.

## Generate Scheduler

1. In ODI designer, navigate to Load Plans and Scenarios, and select scenario MIGRATE\_RMS\_TO\_EBIZ\_ACC\_ENTRY\_PACKAGE
2. Select Existing Scheduling. Make sure the context is set to RETL\_TO\_EBIZ and the agent is selected as RFI\_AGENT

3. You need to select an Execution option based on the ORFI requirement and then save the changes.



4. Similarly, schedule the scenarios for the other ODI Interfaces
  - LOAD\_REIM\_TO\_EBS\_INVOICE\_ENTRY\_PACKAGE
  - REIM\_TO\_EBS\_ACCOUNT\_ENTRY\_DATA\_MIGRATION

## Update Schedule

Go back to Topology and find your physical agent and then right-click and update the schedule.

## Check

The agent runs at a predefined execution time as defined in the schedule. When it runs, you can check it in the Operator. You can also check the data in the EBS side interface tables to determine if the execution is successful and the data has been moved to the EBS interface tables.

---

---

## Appendix: Installation Order

This section provides a guideline as to the order in which the Oracle Retail applications should be installed. If a retailer has chosen to use some, but not all, of the applications the order is still valid less the applications not being installed.

---

---

**Note:** The installation order is not meant to imply integration between products.

---

---

### Enterprise Installation Order

1. Oracle Retail Merchandising System (RMS), Oracle Retail Trade Management (RTM), Oracle Retail Sales Audit (ReSA). Optional: Oracle Retail Fiscal Management (ORFM)

---

---

**Note:** ORFM is an optional application for RMS if you are implementing Brazil localization.

---

---

2. Oracle Retail Service Layer (RSL)
3. Oracle Retail Extract, Transform, Load (RETL)
4. Oracle Retail Active Retail Intelligence (ARI)
5. Oracle Retail Warehouse Management System (RWMS)
6. Oracle Retail Invoice Matching (ReIM)
7. Oracle Retail Price Management (RPM)

---

---

**Note:** During installation of RPM, you are asked for the RIBforRPM provider URL. Because RIB is installed after RPM, make a note of the URL you enter. To change the RIBforRPM provider URL after you install RIB, edit the `remote_service_locator_info_ribserver.xml` file.

---

---

8. Oracle Retail Allocation
9. Oracle Retail Central Office (ORCO)
10. Oracle Retail Returns Management (ORRM)
11. Oracle Retail Back Office (ORBO)
12. Oracle Retail Store Inventory Management (SIM)

---

---

**Note:** During installation of SIM, you are asked for the RIB provider URL. Because RIB is installed after SIM, make a note of the URL you enter. To change the RIB provider URL after you install RIB, edit the `remote_service_locator_info_ribserver.xml` file.

---

---

13. Oracle Retail Predictive Application Server (RPAS)
14. Oracle Retail Demand Forecasting (RDF)
15. Oracle Retail Category Management (CM)
16. Oracle Retail Modeling Engine (ORME)
17. Oracle Retail Assortment Space Optimization (OASO)

18. Oracle Retail Replenishment Optimization (RO)
19. Oracle Retail Analytic Parameter Calculator Replenishment Optimization (APC RO)
20. Oracle Retail Regular Price Optimization (RPO)
21. Oracle Retail Merchandise Financial Planning (MFP)
22. Oracle Retail Size Profile Optimization (SPO)
23. Oracle Retail Assortment Planning (AP)
24. Oracle Retail Item Planning (IP)
25. Oracle Retail Item Planning Configured for COE (IP COE)
26. Oracle Retail Advanced Inventory Planning (AIP)
27. Oracle Retail Integration Bus (RIB)
28. Oracle Retail Service Backbone (RSB)
29. Oracle Retail Financial Integration (ORFI)
30. Oracle Retail Point-of-Service (ORPOS)
31. Oracle Retail Markdown Optimization (MDO)
32. Oracle Retail Clearance Optimization Engine (COE)
33. Oracle Retail Analytic Parameter Calculator for Markdown Optimization (APC-MDO)
34. Oracle Retail Analytic Parameter Calculator for Regular Price Optimization (APC-RPO)
35. Oracle Retail Analytics