

RCU Configuration
Oracle Banking Liquidity Management
Release 12.4.0.0.0
[April] [2017]



Table of Contents

- 1. RCU CONFIGURATION..... 1-1
 - 1.1 INTRODUCTION 1-1
 - 1.2 STEPS TO BE FOLLOWED FOR RCU CONFIGURATION 1-1

1. RCU Configuration

1.1 Introduction

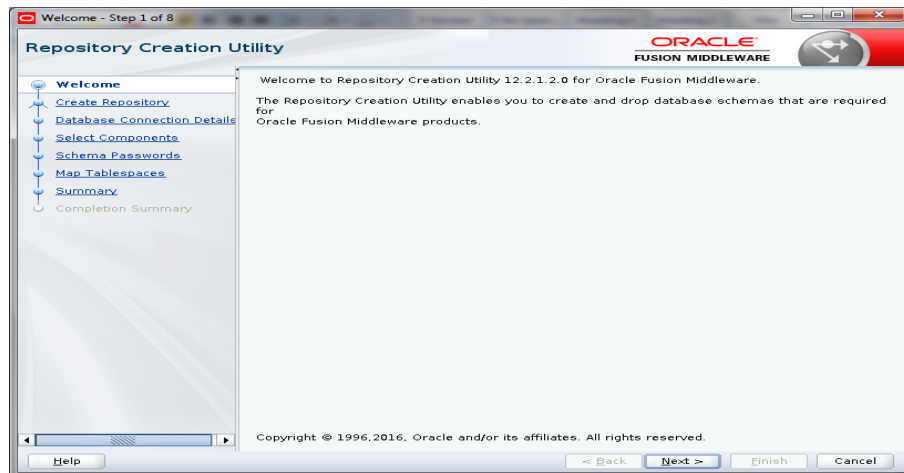
This chapter details out the configuration of RCU. Totally 2 Schema Owners to be created using this RCU Utility, one for the BIP Setup and another one for the Application Domain Setup.

NOTE: RCU setup is not necessary when the domain is already available.

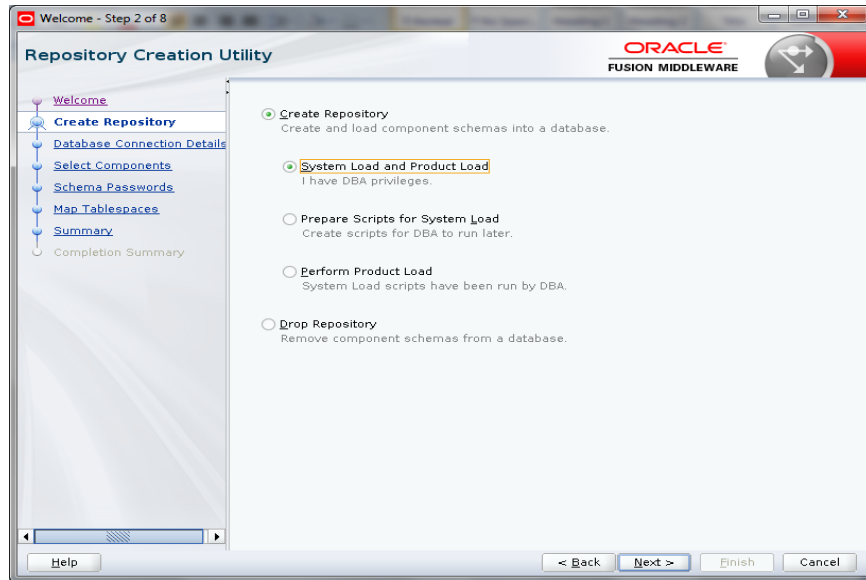
1.2 Steps to be followed for RCU Configuration

For RCU configuration

1. Go to `.../Middleware/Oracle_Home/oracle_common/bin/` and run this `./rcu`.



2. Click on **Next**. The following screen will appear. Select System Load and product Load.



3. Click on **Next**. The following screen will appear.

Database Type: Oracle Database

Host Name: Host IP where DB is running

Port: Port number where DB is running (e.g. 1521)

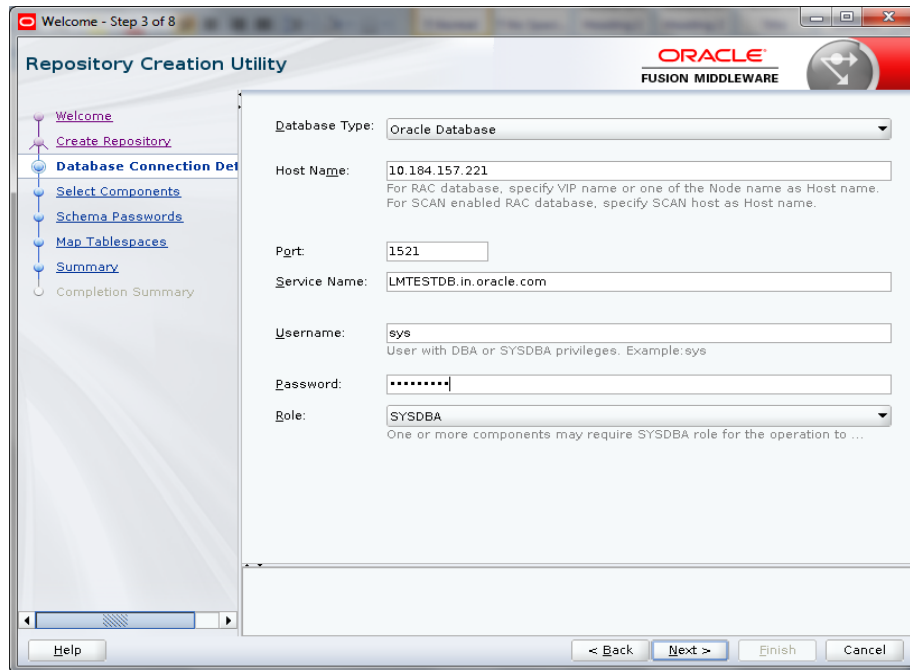
Service Name: Service Name of the DB (e.g. LMTESTDB.in.oracle.com)

Give sys username and Password

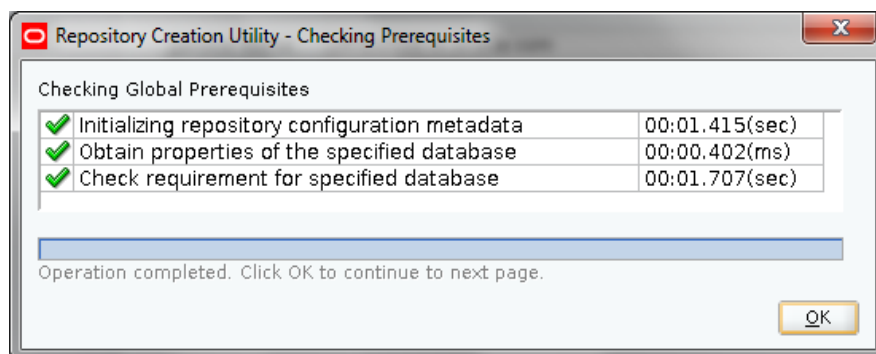
Role: SYSDBA



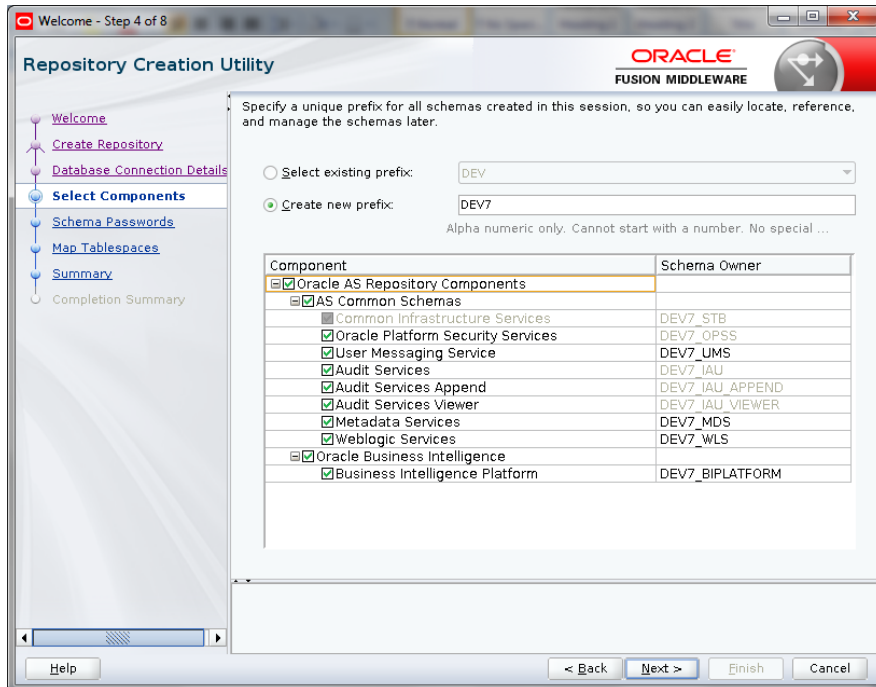
4. Click on **Next**.



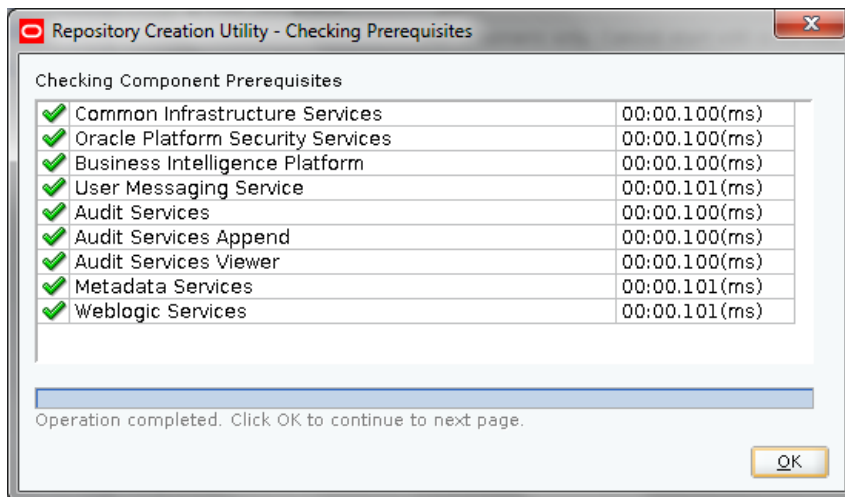
5. Click **OK**. Following screen will appear. **Select Create new prefix :DEV7 (for example)**
6. Enter the prefix of your choice



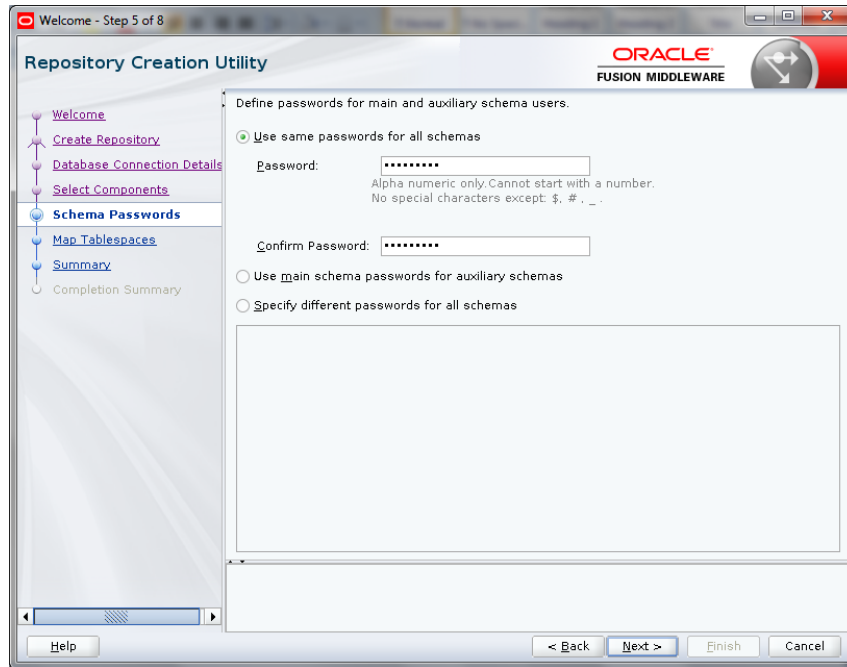
7. Select **Oracle AS Repository Components** checkbox. The rest of the checkboxes should be selected automatically.
8. Click **Next**.



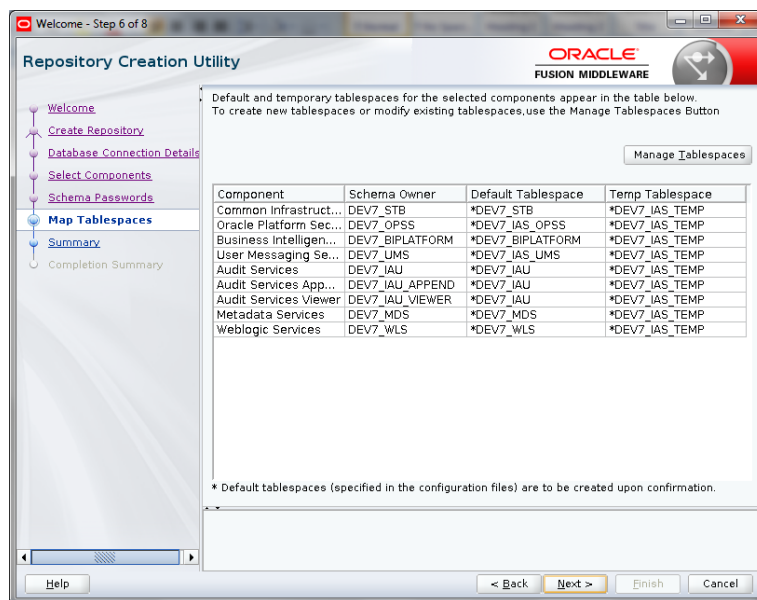
9. Click **OK**.



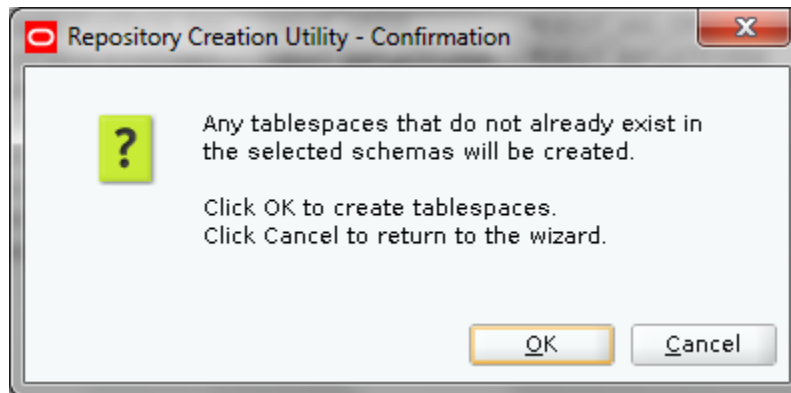
10. Click on **Use Same Password for all schemas** and Click **Next**



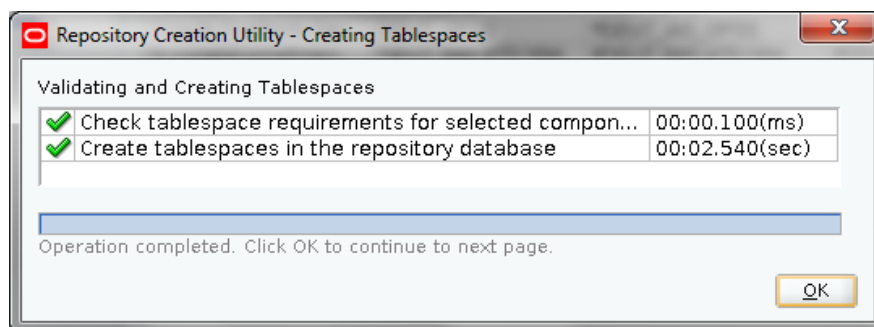
11. Click **Next**.



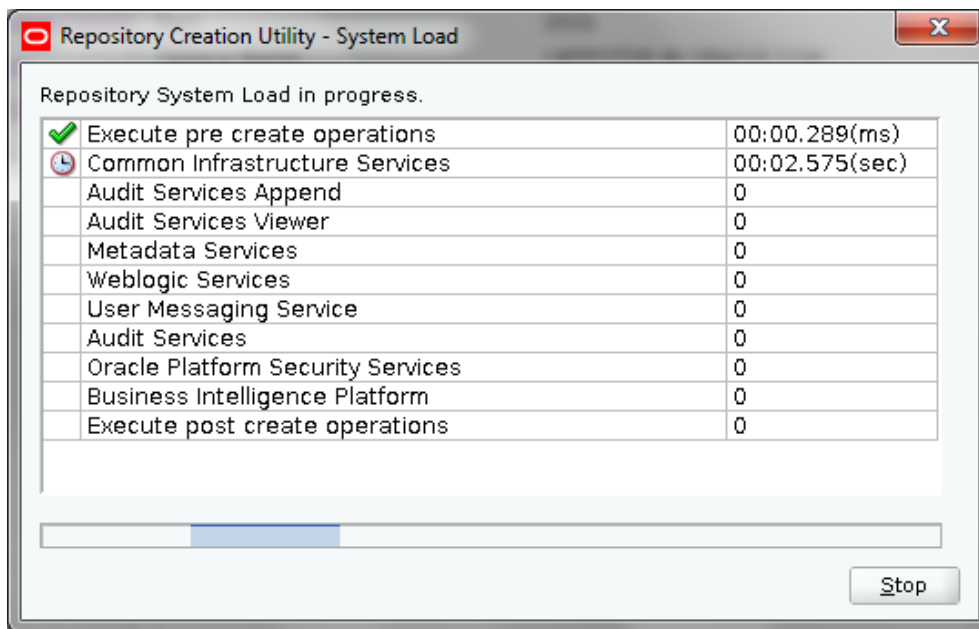
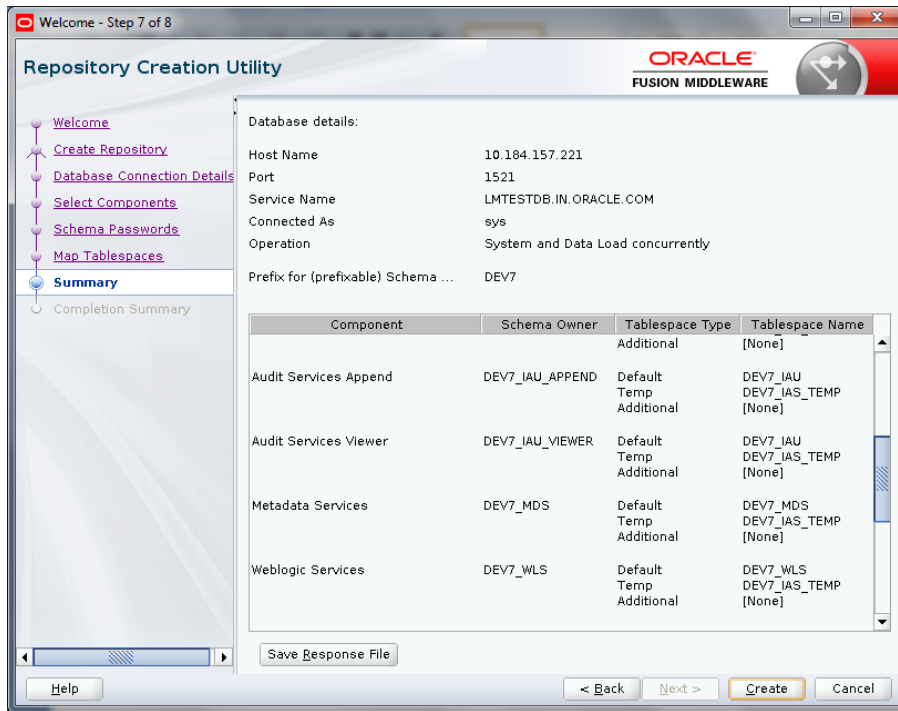
12. Click **Next**.



13. Click **OK**.



14. Click **Create**.



15. Review the following screen and Click **Close**

Welcome - Step 8 of 8

Repository Creation Utility

ORACLE
FUSION MIDDLEWARE

- Welcome
- Create Repository
- Database Connection Details
- Select Components
- Schema Passwords
- Map Tablespaces
- Summary
- Completion Summary**

Database details:

Host Name: 10.184.157.221
 Port: 1521
 Service Name: LMTSTDB.IN.ORACLE.COM
 Connected As: sys
 Operation: System and Data Load concurrently
 Execution Time: 2 minutes 25 seconds

RCU Logfile: /tmp/RCU2017-03-27_10-34_1861197084/logs/rcu.log
 Component Log Directory: /tmp/RCU2017-03-27_10-34_1861197084/logs
 View Log:

Prefix for (prefixable): DEV7
 Schema Owners:

Component	Status	Time	Logfile(Click to view)
Common Infrastructure Services	Success	00:10.215(sec)	<input type="button" value="stb.log"/>
Oracle Platform Security Services	Success	00:23.224(sec)	<input type="button" value="opss.log"/>
Business Intelligence Platform	Success	00:19.660(sec)	<input type="button" value="biplatform.log"/>
User Messaging Service	Success	00:13.888(sec)	<input type="button" value="ucsums.log"/>
Audit Services	Success	00:16.350(sec)	<input type="button" value="iau.log"/>
Audit Services Append	Success	00:09.385(sec)	<input type="button" value="iau_append.log"/>
Audit Services Viewer	Success	00:09.220(sec)	<input type="button" value="iau_viewer.log"/>
Metadata Services	Success	00:16.398(sec)	<input type="button" value="mds.log"/>
Weblogic Services	Success	00:17.498(sec)	<input type="button" value="wls.log"/>



RCU Configuration
Oracle Banking Liquidity Management
Version 12.4.0.0.0
[April] [2017]

Oracle Financial Services Software Limited
Oracle Park
Off Western Express Highway
Goregaon (East)
Mumbai, Maharashtra 400 063
India

Worldwide Inquiries:
Phone: +91 22 6718 3000
Fax: +91 22 6718 3001
www.oracle.com/financialservices/

Copyright © 2017, Oracle and/or its affiliates. All rights reserved.

Oracle and Java are registered trademarks of Oracle and/or its affiliates. Other names may be trademarks of their respective owners.

U.S. GOVERNMENT END USERS: Oracle programs, including any operating system, integrated software, any programs installed on the hardware, and/or documentation, delivered to U.S. Government end users are "commercial computer software" pursuant to the applicable Federal Acquisition Regulation and agency-specific supplemental regulations. As such, use, duplication, disclosure, modification, and adaptation of the programs, including any operating system, integrated software, any programs installed on the hardware, and/or documentation, shall be subject to license terms and license restrictions applicable to the programs. No other rights are granted to the U.S. Government.

This software or hardware is developed for general use in a variety of information management applications. It is not developed or intended for use in any inherently dangerous applications, including applications that may create a risk of personal injury. If you use this software or hardware in dangerous applications, then you shall be responsible to take all appropriate failsafe, backup, redundancy, and other measures to ensure its safe use. Oracle Corporation and its affiliates disclaim any liability for any damages caused by use of this software or hardware in dangerous applications.

This software and related documentation are provided under a license agreement containing restrictions on use and disclosure and are protected by intellectual property laws. Except as expressly permitted in your license agreement or allowed by law, you may not use, copy, reproduce, translate, broadcast, modify, license, transmit, distribute, exhibit, perform, publish or display any part, in any form, or by any means. Reverse engineering, disassembly, or decompilation of this software, unless required by law for interoperability, is prohibited.

The information contained herein is subject to change without notice and is not warranted to be error-free. If you find any errors, please report them to us in writing.

This software or hardware and documentation may provide access to or information on content, products and services from third parties. Oracle Corporation and its affiliates are not responsible for and expressly disclaim all warranties of any kind with respect to third-party content, products, and services. Oracle Corporation and its affiliates will not be responsible for any loss, costs, or damages incurred due to your access to or use of third-party content, products, or services.