

**Oracle Insurance**

**Insbridge Enterprise  
Rating  
Design Time Reporting  
Document**

Release 5.5.x

September 2017

## DESIGN TIME REPORTING

The IBRM database is the repository for content created in RateManager. Data is stored in a proprietary format. A design time reporting feature has been added to the IBRM database that allows for access to the IBRM data in a relational data structure and format that can be used for reporting. Data can be extracted and evaluated by a third party reporting tool.

The Insbridge Reporting Doc zip file contains detailed documentation that describes what data is available, the relationships of all data elements, how the data should be accessed, and a sample report that can be created using the available data.

Read only permissions are required to create a connection to the design time reporting feature. Contact your system administrator to request permissions.

To access the design time reporting feature, a third party tool, such as Microsoft Excel, can be used to create a connection to the IBRM database and download data.

## Insbridge User Reporting Schema

The Insbridge User Reporting Schema offers a reporting view into the Insbridge RateManager (IBRM) database.

This data is available to any standard SQL Server Database reporting software. Please contact your IT department for your reporting options.

### Reporting View Categories

Program Explorer Reporting Views

Universals Reporting Views

Globals Reporting Views

Locals Reporting Views

Summary Reporting Views

General Reporting Views

Table Variable Data Views

See the Insbridge Reporting Doc zip for more information.

## Setting Up

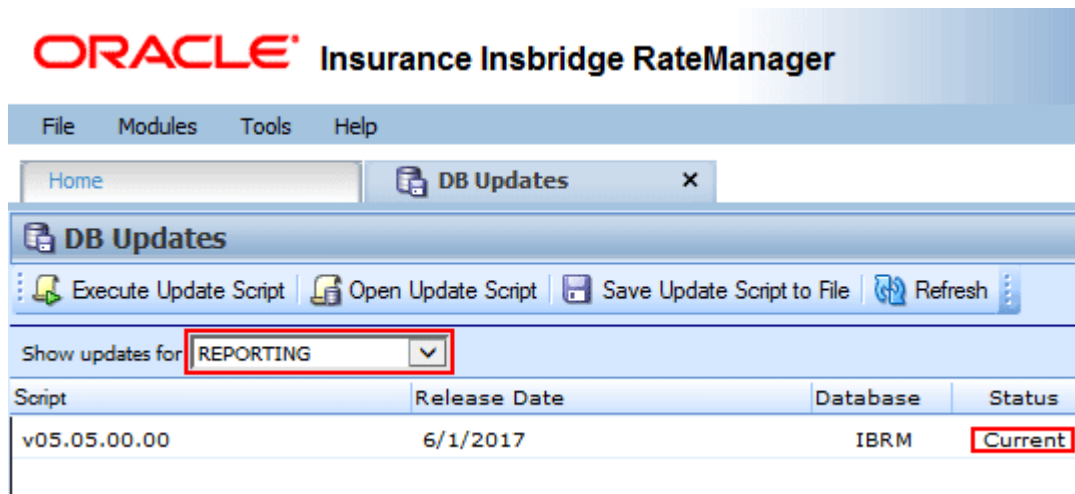
A Reporting script must be run from within the RateManager application. Running db update scripts requires admin permissions.

On the DB Updates screen, the current version will be highlighted and the status will be *Current*. The updates below the current version will be grayed out. These updates cannot be run again. Current updates can be re-run if necessary. You will receive an error message if you attempt to run a lower version update. Any version update above the current version will also be grayed out but will be available for executing.

New installations may show the latest version as current but still have only the Tools option available. You may have to run the current script again. To see if you have complete access, click File→Reload to refresh the system.

Navigate to the Tools→Database→Updates.

1. The **Updates** tab is displayed. Select the database you want to view from the **Show updates for** drop down. The database updates for your selection is listed. The last column, the **Status** column, shows you which update is the **Current** one installed.
2. For safety, run or rerun the IBRM and IB\_CLIENT scripts before running the Reporting script.
3. Run the reporting script. **The Reporting script must be run last.**

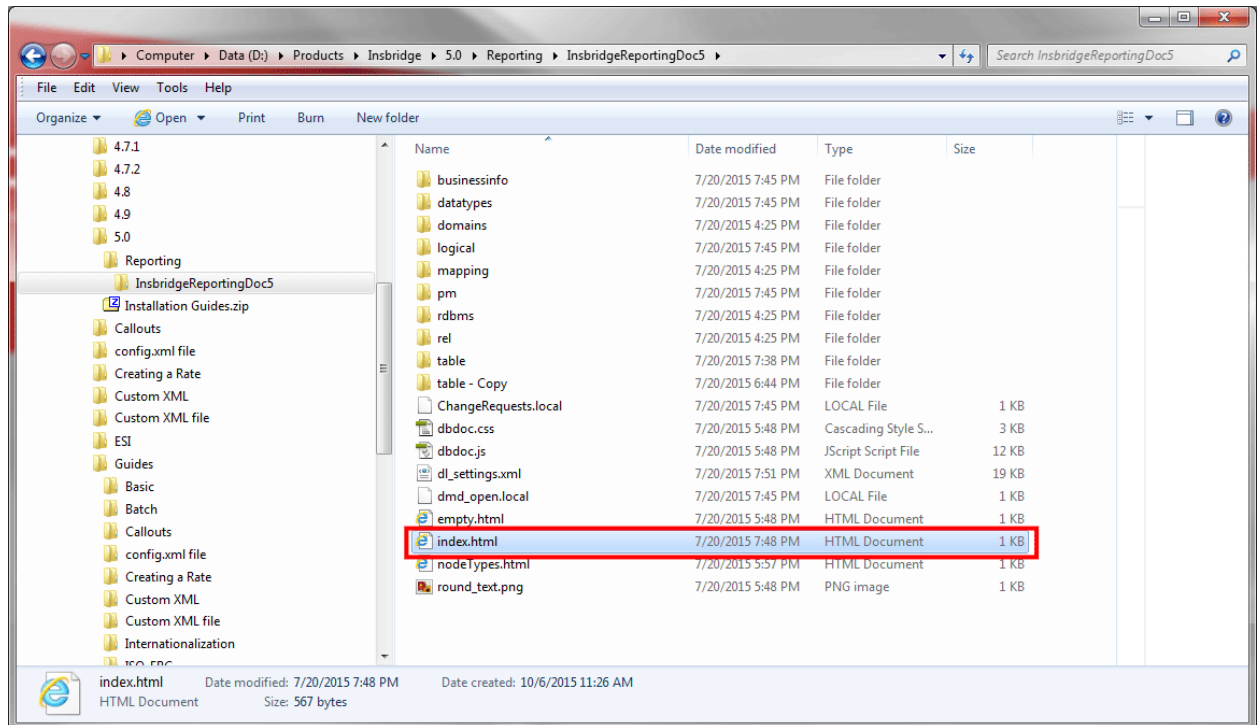


4. Click File→Reload to refresh the system.
5. Return to the Tools menu and Open Setup→Reporting Data Model
6. Click the Update Reporting Views.

This option updates the algorithm steps in the Reporting Data Model. This option only needs to be run once. After it has been run, the data should be in sync.

## Insbridge Reporting Doc zip

7. Download the Insbridge Reporting Doc zip from the documentation download on Oracle Cloud delivery or the Oracle Technical Network. Extract to a location on your local machine.
8. Open the file and locate the Index.html file.



9. Right click and Open with Internet Explorer.
10. This opens the Insbridge Reporting Details screen.

**Insbridge Runtime Reporting**

**PROGRAMS**  
Programs entered in the Insbridge application.

Filter Reporting Views by:

Reporting Views Data Model  
[DOMAIN\\_TYPES](#)  
[DOMAINS](#)  
[PROJECTS](#)  
[PRODUCTS](#)  
[PROGRAM FOLDERS](#)  
[PROGRAMS](#)  
[PROGRAM VERSIONS](#)  
[NOTES](#)  
[CATEGORIES](#)  
[INSTRUCTIONS](#)  
[ALL\\_TABLE\\_VARS](#)  
[ALL\\_TABLE\\_QUALIFIERS](#)  
[TABLE\\_VAR\\_VIEWS](#)  
[UNIVERSAL\\_ALGORITHMS](#)  
[UNIVERSAL\\_CALCULATED\\_VARS](#)  
[UNIVERSAL\\_CONSTANTS](#)  
[UNIVERSAL\\_FIELD\\_VARS](#)  
[UNIVERSAL\\_FILTER\\_RULES](#)  
[UNIVERSAL\\_REPORT\\_MASTER](#)  
[UNIVERSAL\\_RESULTS](#)  
[UNIVERSAL\\_TABLE\\_VARS](#)  
[GLOBAL\\_ALGORITHMS](#)  
[GLOBAL\\_CALCULATED\\_VARS](#)  
[GLOBAL\\_CONSTANTS](#)  
[GLOBAL\\_DRIVER\\_ASSIGNMENT](#)  
[GLOBAL\\_FIELD\\_VARS](#)  
[GLOBAL\\_FILTER\\_RULES](#)  
[GLOBAL\\_REPORT\\_MASTER](#)  
[GLOBAL\\_RESULTS](#)  
[GLOBAL\\_TABLE\\_VARS](#)  
[GLOBAL\\_VERSIONING\\_DATA](#)  
[GLOBAL\\_VERSIONING\\_QUALIFIERS](#)  
[LOCAL\\_ALGORITHMS](#)  
[LOCAL\\_CALCULATED\\_VARS](#)  
[LOCAL\\_DRIVER\\_ASSIGNMENT](#)  
[LOCAL\\_FILTER\\_RULES](#)

COLUMN_NAME	DATA_TYPE	NULLABLE	DATA_DEFAULT	COLUMN_ID	COMMENTS
DOMAIN_TYPE_ID	INTEGER	No	null	1	A unique identifier indicating the Domain Type
DOMAIN_TYPE_NAME	NVARCHAR(50)	No	null	2	The Domain Type Name
DOMAIN_ID	INTEGER	No	null	3	A unique identifier indicating the Domain
DOMAIN_NAME	NVARCHAR(50)	Yes	null	4	The Domain Name
PROJECT_ID	INTEGER	Yes	null	5	A unique identifier indicating the Project
PRJ_MODEL_ID	INTEGER	Yes	null	6	A unique identifier indicating the Project Model
PRJ_MODEL_VER	INTEGER	Yes	null	7	The Project Model Version
PROJECT_NAME	NVARCHAR(50)	No	null	8	The Project Name
PRODUCT_ID	INTEGER	Yes	null	9	A unique identifier indicating the Product
PRODUCT_NAME	NVARCHAR(50)	Yes	null	10	The Product Name
FOLDER_ID	INTEGER	Yes	null	11	A unique identifier indicating the Folder
FOLDER_NAME	NVARCHAR(50)	Yes	null	12	The Folder Name
PROGRAM_FOLDER	NVARCHAR(563)	Yes	null	13	The Program Folder
PROGRAM_ID	INTEGER	Yes	null	14	A unique identifier indicating the Program
PROGRAM_NAME	NVARCHAR(100)	Yes	null	15	The Program Name
TYPE	INTEGER	No	null	16	The Type
DATE_LAST_MODIFIED	SMALLDATETIME	No	null	17	The Date Last Modified
STATE_ID	INTEGER	Yes	null	18	A unique identifier indicating the State
COUNTRY_ID	INTEGER	Yes	null	19	A unique identifier indicating the Country
XSL_INPUT	NTEXT	Yes	null	20	The XSL Input
XSL_OUTPUT	NTEXT	Yes	null	21	The XSL Output
DATE_MASK	NVARCHAR(20)	Yes	null	22	The Date Mask
CULTURE	NVARCHAR(50)	No	null	23	The Culture
DECIMAL_SYMBOL	NVARCHAR(10)	No	null	24	The Decimal Symbol
GROUP_SYMBOL	NVARCHAR(10)	No	null	25	The Group Symbol

Copyright © 2015, Oracle and/or its affiliates. All rights reserved.

11. The left side is the views you can select. Click a view to see the details that are presented. In this example, the Programs view was selected. On the right is a listing of columns and column details.

The left side of the Insbridge Reporting Doc lists the available views.

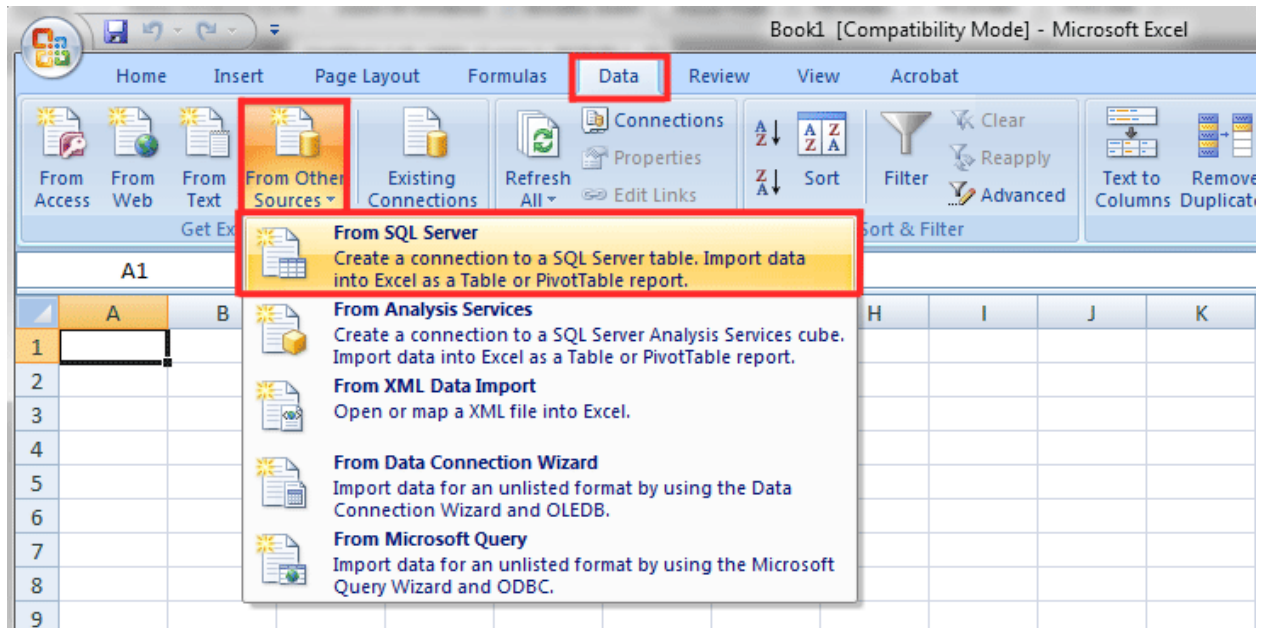
The right side is the naming convention for the view.

12. You can leave this screen open while you work with the data. It is a good reference.

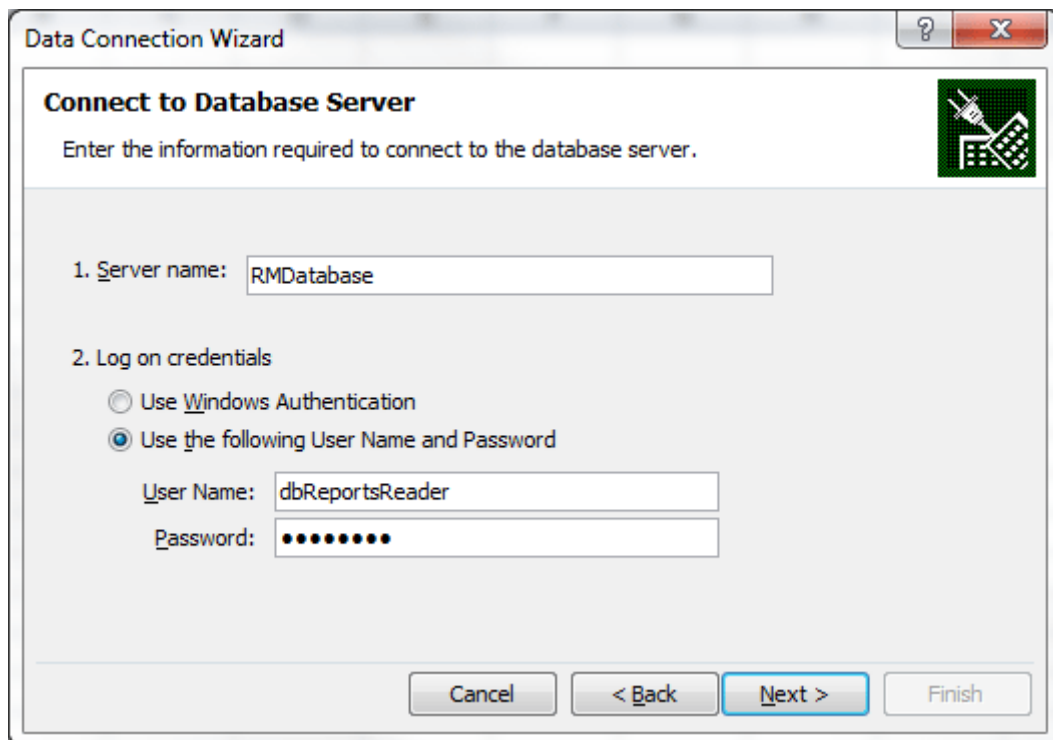
13. Close the screen when you are finished.

## Setting Up a Connection to SQL Server Example

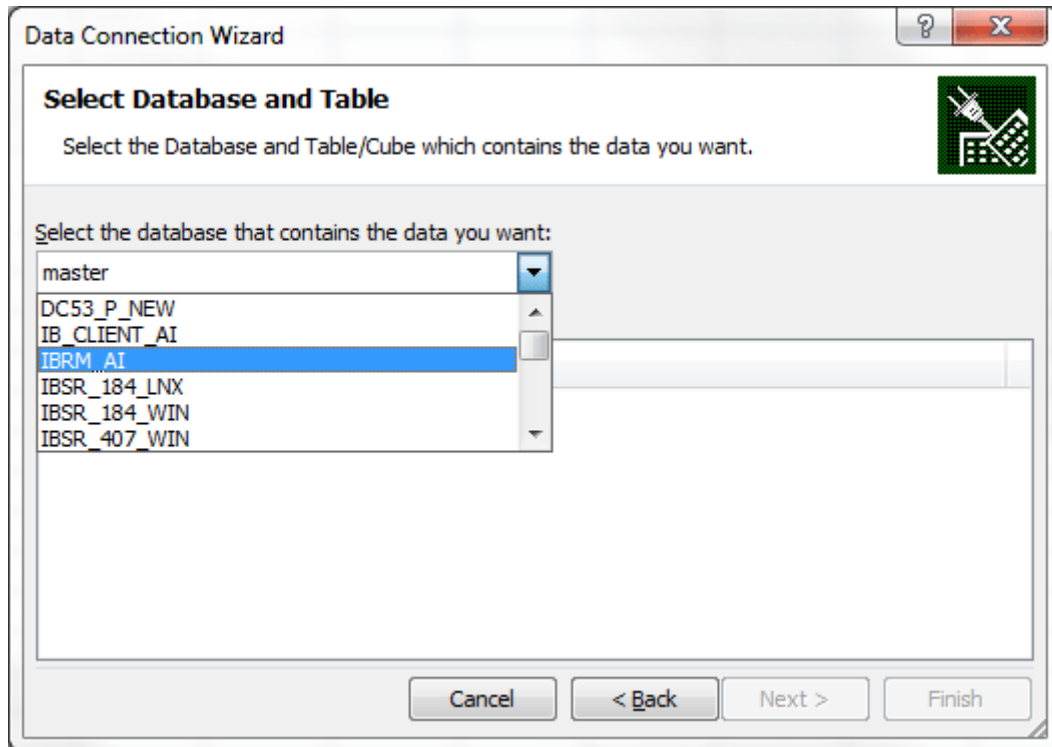
1. In Excel, select the Data tab.
2. Under Get External Data, select From Other sources.
3. Select SQL Server



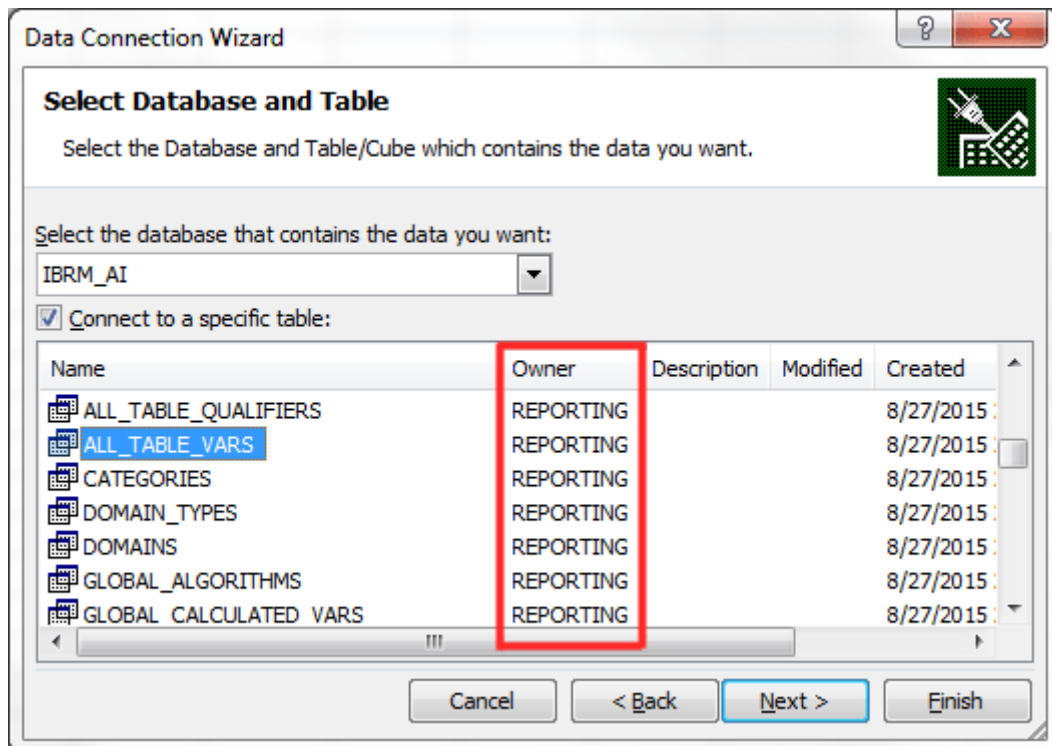
4. Enter the server name and your database credentials. You must have at least read-only access.



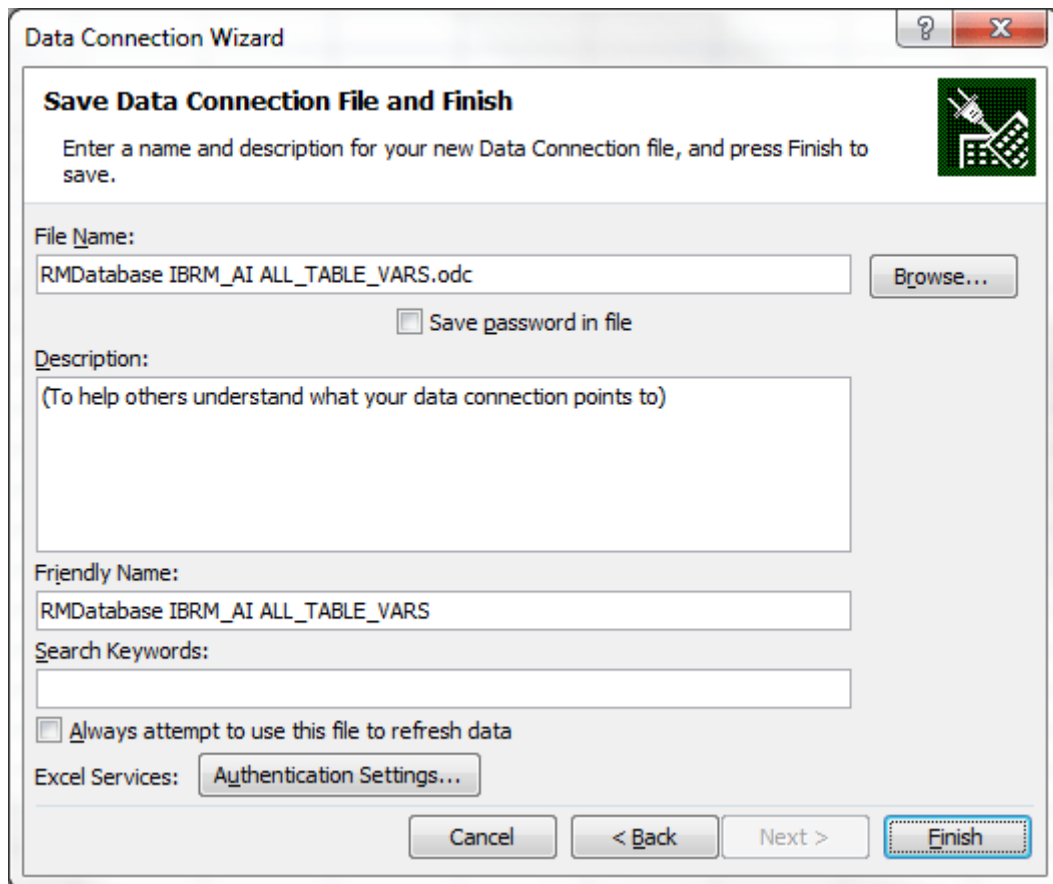
5. Select the IBRM database. The available table will be populated.



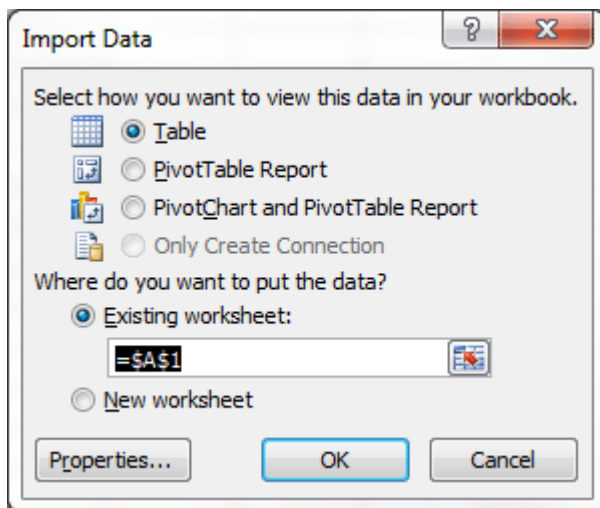
6. Select a table with an Owner of REPORTING. These are the design time reporting views available.



7. If you click next, the data connection file can be saved.



- 8. If you click Finish, the data will be downloaded but the connection will not be saved.
- 9. Select how you want to view the data.



- 10. You may be required to log in again.



- The data will be presented. This data can be shared and manipulated as needed. Algorithms will have steps presented in a readable format.

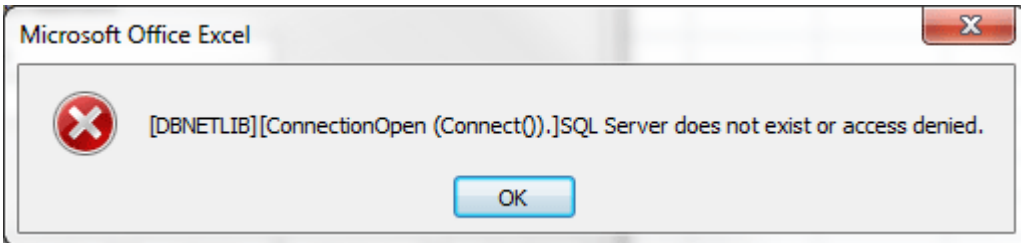
PRI_MODEL_ID	PRODUCT_NAME	PROGRAM ID	PROG NAME	TABLE_VARIABLE_NAME	TABLE_VERSION	LOOKUP_VARS_ID	DATA_TYP
1	Auto	0	AUTO GLOBAL	Usage Code	1	26	0
2	1	0	AUTO GLOBAL	Va_ALookup_Table	1	27	2
3	1	0	AUTO GLOBAL	UsageCode_5	1	28	0
4	1	0	AUTO GLOBAL	Usage Code SCHD A	1	29	0
5	1	0	AUTO GLOBAL	UsageCode_6	1	30	0
6	1	0	AUTO GLOBAL	AM_Audio_Code	1	31	1
7	1	0	AUTO GLOBAL	Option_Code	1	32	0
8	1	0	AUTO GLOBAL	Option_Fee	1	32	0
9	1	623458624	ModelAutoInsurance	CSLBaseRate	1	5001	2
10	1	623458624	ModelAutoInsurance	BIBaseRate	1	5001	2
11	1	623458624	ModelAutoInsurance	PDBaseRate	1	5001	2
12	1	623458624	ModelAutoInsurance	MPBaseRate	1	5001	2
13	1	623458624	ModelAutoInsurance	CompBaseRate	1	5001	2
14	1	623458624	ModelAutoInsurance	CollBaseRate	1	5001	2
15	1	623458624	ModelAutoInsurance	BIClassFactor	1	5002	2
16	1	623458624	ModelAutoInsurance	PDClassFactor	1	5002	2
17	1	623458624	ModelAutoInsurance	CSLClassFactor	1	5002	2
18	1	623458624	ModelAutoInsurance	MPCClassFactor	1	5002	2
19	1	623458624	ModelAutoInsurance	CompClassFactor	1	5002	2
20	1	623458624	ModelAutoInsurance	CollClassFactor	1	5002	2
21	1	623458624	ModelAutoInsurance	BaseSymbol	1	5003	2
22	1	623458624	ModelAutoInsurance	CompSymFactor	1	5003	2
23	1	623458624	ModelAutoInsurance	CollSymFactor	1	5003	2
24	1	623458643	Copy of ModelAutoInsurance	CSLBaseRate	1	2	2
25	1	623458643	Copy of ModelAutoInsurance	BIBaseRate	1	2	2
26	1	623458643	Copy of ModelAutoInsurance	PDBaseRate	1	2	2
27	1	623458643	Copy of ModelAutoInsurance	MPBaseRate	1	2	2
28	1	623458643	Copy of ModelAutoInsurance	CompBaseRate	1	2	2
29	1	623458643	Copy of ModelAutoInsurance	CollBaseRate	1	2	2
30	1	623458643	Copy of ModelAutoInsurance	BIClassFactor	1	3	2
31	1	623458643	Copy of ModelAutoInsurance	BIClassFactor	1	3	2

For more information regarding the columns and information presented, please see the Insbridge Reporting Doc zip.

If you saved your connection, you can access the table at a later time by clicking the Existing Connections under Get External Data.

### Permissions Error

If you do not have the proper permissions an error message is presented.



## Contacting Support

If you need assistance with an Oracle Insurance Insbridge Enterprise Rating System product, please log a Service Request using My Oracle Support at <https://support.oracle.com/>.

Oracle customers have access to electronic support through My Oracle Support. For information, visit <http://www.oracle.com/pls/topic/lookup?ctx=acc&id=info> or visit <http://www.oracle.com/pls/topic/lookup?ctx=acc&id=trs> if you are hearing impaired.

### Address any additional inquiries to:

**Oracle Corporation**  
World Headquarters  
500 Oracle Parkway  
Redwood Shores, CA 94065  
U.S.A.

Worldwide Inquiries:  
Phone: +1.650.506.7000  
Fax: +1.650.506.7200  
[oracle.com](http://oracle.com)



Oracle Insurance Insbridge Enterprise Rating RateManager Design Time Reporting Document  
September 2017

Author: Mary Elizabeth Wiger

Contributing Authors:

Part # E87254-01

Library# E87264-01

Oracle Corporation  
World Headquarters  
500 Oracle Parkway  
Redwood Shores, CA 94065  
U.S.A.

Worldwide Inquiries:

Phone: +1.650.506.7000

Fax: +1.650.506.7200

oracle.com

Copyright © 2015, 2017 Oracle and/or its affiliates. All rights reserved.

This software and related documentation are provided under a license agreement containing restrictions on use and disclosure and are protected by intellectual property laws. Except as expressly permitted in your license agreement or allowed by law, you may not use, copy, reproduce, translate, broadcast, modify, license, transmit, distribute, exhibit, perform, publish, or display any part, in any form, or by any means. Reverse engineering, disassembly, or decompilation of this software, unless required by law for interoperability, is prohibited.

The information contained herein is subject to change without notice and is not warranted to be error-free. If you find any errors, please report them to us in writing.

Oracle and Java are registered trademarks of Oracle and/or its affiliates. Other names may be trademarks of their respective owners.