

Oracle® Documaker

Common Objects

User guide

11.3.59 and 10.2.11.77

May 2017

Copyright © 2009, 2017, Oracle and/or its affiliates. All rights reserved.

The Programs (which include both the software and documentation) contain proprietary information; they are provided under a license agreement containing restrictions on use and disclosure and are also protected by copyright, patent, and other intellectual and industrial property laws. Reverse engineering, disassembly, or decompilation of the Programs, except to the extent required to obtain interoperability with other independently created software or as specified by law, is prohibited.

The information contained in this document is subject to change without notice. If you find any problems in the documentation, please report them to us in writing. This document is not warranted to be error-free. Except as may be expressly permitted in your license agreement for these Programs, no part of these Programs may be reproduced or transmitted in any form or by any means, electronic or mechanical, for any purpose.

If the Programs are delivered to the United States Government or anyone licensing or using the Programs on behalf of the United States Government, the following notice is applicable:

U.S. GOVERNMENT RIGHTS

Programs, software, databases, and related documentation and technical data delivered to U.S. Government customers are "commercial computer software" or "commercial technical data" pursuant to the applicable Federal Acquisition Regulation and agency-specific supplemental regulations. As such, use, duplication, disclosure, modification, and adaptation of the Programs, including documentation and technical data, shall be subject to the licensing restrictions set forth in the applicable Oracle license agreement, and, to the extent applicable, the additional rights set forth in FAR 52.227-19, Commercial Computer Software--Restricted Rights (June 1987). Oracle USA, Inc., 500 Oracle Parkway, Redwood City, CA 94065.

The Programs are not intended for use in any nuclear, aviation, mass transit, medical, or other inherently dangerous applications. It shall be the licensee's responsibility to take all appropriate fail-safe, backup, redundancy and other measures to ensure the safe use of such applications if the Programs are used for such purposes, and we disclaim liability for any damages caused by such use of the Programs.

The Programs may provide links to Web sites and access to content, products, and services from third parties. Oracle is not responsible for the availability of, or any content provided on, third-party Web sites. You bear all risks associated with the use of such content. If you choose to purchase any products or services from a third party, the relationship is directly between you and the third party. Oracle is not responsible for: (a) the quality of third-party products or services; or (b) fulfilling any of the terms of the agreement with the third party, including delivery of products or services and warranty obligations related to purchased products or services. Oracle is not responsible for any loss or damage of any sort that you may incur from dealing with any third party.

Oracle, JD Edwards, and PeopleSoft are registered trademarks of Oracle Corporation and/or its affiliates. Other names may be trademarks of their respective owners.

THIRD PARTY SOFTWARE NOTICES

This product includes software developed by Apache Software Foundation (<http://www.apache.org/>).

THIS SOFTWARE IS PROVIDED "AS IS" AND ANY EXPRESS OR IMPLIED WARRANTIES, INCLUDING, BUT NOT LIMITED TO, THE IMPLIED WARRANTIES OF MERCHANTABILITY AND FITNESS FOR A PARTICULAR PURPOSE ARE DISCLAIMED. IN NO EVENT SHALL THE AUTHOR OR CONTRIBUTORS BE LIABLE FOR ANY DIRECT, INDIRECT, INCIDENTAL, SPECIAL, EXEMPLARY, OR CONSEQUENTIAL DAMAGES (INCLUDING, BUT NOT LIMITED TO, PROCUREMENT OF SUBSTITUTE GOODS OR SERVICES; LOSS OF USE, DATA, OR PROFITS; OR BUSINESS INTERRUPTION) HOWEVER CAUSED AND ON ANY THEORY OF LIABILITY, WHETHER IN CONTRACT, STRICT LIABILITY, OR TORT (INCLUDING NEGLIGENCE OR OTHERWISE) ARISING IN ANY WAY OUT OF THE USE OF THIS SOFTWARE, EVEN IF ADVISED OF THE POSSIBILITY OF SUCH DAMAGE.

Copyright © 2000-2009 The Apache Software Foundation. All rights reserved.

Apache Commons Math Copyright 2001-2008 The Apache Software Foundation

This product includes software translated from the odex Fortran routine developed by E. Hairer and G. Wanner and distributed under the following license:

Copyright (c) 2004, Ernst Hairer

Apache License Version 2.0, January 2004 (<http://www.apache.org/licenses/LICENSE-2.0>)

THIS SOFTWARE IS PROVIDED "AS IS" AND ANY EXPRESSED OR IMPLIED WARRANTIES, INCLUDING, BUT NOT LIMITED TO, THE IMPLIED WARRANTIES OF MERCHANTABILITY AND FITNESS FOR A PARTICULAR PURPOSE ARE DISCLAIMED. IN NO EVENT SHALL THE VISIGOTH SOFTWARE SOCIETY OR ITS CONTRIBUTORS BE LIABLE FOR ANY DIRECT, INDIRECT, INCIDENTAL, SPECIAL, EXEMPLARY, OR CONSEQUENTIAL DAMAGES (INCLUDING, BUT NOT LIMITED TO, PROCUREMENT OF SUBSTITUTE GOODS OR SERVICES; LOSS OF USE, DATA, OR PROFITS; OR BUSINESS INTERRUPTION) HOWEVER CAUSED AND ON ANY THEORY OF LIABILITY, WHETHER IN CONTRACT, STRICT LIABILITY, OR TORT (INCLUDING NEGLIGENCE OR OTHERWISE) ARISING IN ANY WAY OUT OF THE USE OF THIS SOFTWARE, EVEN IF ADVISED OF THE POSSIBILITY OF SUCH DAMAGE.

Apache Commons Codec Copyright 2002-2009 The Apache Software Foundation
Copyright (C) 2002 Kevin Atkinson (kevina@gnu.org)

Apache Commons Pool
Copyright 2001-2011 The Apache Software Foundation

Apache Jakarta Commons Lang
Copyright 2001-2007 The Apache Software Foundation

Apache Jakarta Commons FileUpload
Copyright 2002-2006 The Apache Software Foundation

Apache Commons CLI
Copyright 2001-2009 The Apache Software Foundation

Apache Commons Collections
Copyright 2001-2008 The Apache Software Foundation

Apache Commons Logging
Copyright 2003-2013 The Apache Software Foundation

Barcode4J
Copyright 2002-2010 Jeremias Märki
Copyright 2005-2006 Dietmar Bürkle
Portions of this software were contributed under section 5 of the
Apache License. Contributors are listed under: (<http://barcode4j.sourceforge.net/contributors.html>)

Copyright 2002-2010 The Apache Software Foundation

This product includes software distributed via the Berkeley Software Distribution (BSD) and licensed for binary distribution under the Generic BSD license.

THIS SOFTWARE IS PROVIDED BY THE COPYRIGHT HOLDERS AND CONTRIBUTORS "AS IS" AND ANY EXPRESS OR IMPLIED WARRANTIES, INCLUDING, BUT NOT LIMITED TO, THE IMPLIED WARRANTIES OF MERCHANTABILITY AND FITNESS FOR A PARTICULAR PURPOSE ARE DISCLAIMED. IN NO EVENT SHALL THE COPYRIGHT OWNER OR CONTRIBUTORS BE LIABLE FOR ANY DIRECT, INDIRECT, INCIDENTAL, SPECIAL, EXEMPLARY, OR CONSEQUENTIAL DAMAGES (INCLUDING, BUT NOT LIMITED TO, PROCUREMENT OF SUBSTITUTE GOODS OR SERVICES; LOSS OF USE, DATA, OR PROFITS; OR BUSINESS INTERRUPTION) HOWEVER CAUSED AND ON ANY THEORY OF LIABILITY, WHETHER IN CONTRACT, STRICT LIABILITY, OR TORT (INCLUDING NEGLIGENCE OR OTHERWISE) ARISING IN ANY WAY OUT OF THE USE OF THIS SOFTWARE, EVEN IF ADVISED OF THE POSSIBILITY OF SUCH DAMAGE.

Copyright © 2009, Berkeley Software Distribution (BSD)

This product includes software developed by the JDOM Project (<http://www.jdom.org/>).

THIS SOFTWARE IS PROVIDED "AS IS" AND ANY EXPRESSED OR IMPLIED WARRANTIES, INCLUDING, BUT NOT LIMITED TO, THE IMPLIED WARRANTIES OF MERCHANTABILITY AND FITNESS FOR A PARTICULAR PURPOSE ARE DISCLAIMED. IN NO EVENT SHALL THE JDOM AUTHORS OR THE PROJECT CONTRIBUTORS BE LIABLE FOR ANY DIRECT, INDIRECT, INCIDENTAL, SPECIAL, EXEMPLARY, OR CONSEQUENTIAL DAMAGES (INCLUDING, BUT NOT LIMITED TO, PROCUREMENT OF SUBSTITUTE GOODS OR SERVICES; LOSS OF USE, DATA, OR PROFITS; OR BUSINESS INTERRUPTION) HOWEVER CAUSED AND ON ANY THEORY OF LIABILITY, WHETHER IN CONTRACT, STRICT LIABILITY, OR TORT (INCLUDING NEGLIGENCE OR OTHERWISE) ARISING IN ANY WAY OUT OF THE USE OF THIS SOFTWARE, EVEN IF ADVISED OF THE POSSIBILITY OF SUCH DAMAGE.

Copyright (C) 2000-2004 Jason Hunter & Brett McLaughlin. All rights reserved.

This product includes software developed by the Massachusetts Institute of Technology (MIT).

THE SOFTWARE IS PROVIDED "AS IS", WITHOUT WARRANTY OF ANY KIND, EXPRESS OR IMPLIED, INCLUDING BUT NOT LIMITED TO THE WARRANTIES OF MERCHANTABILITY, FITNESS FOR A PARTICULAR PURPOSE AND NONINFRINGEMENT. IN NO EVENT SHALL THE AUTHORS OR COPYRIGHT HOLDERS BE LIABLE FOR ANY CLAIM, DAMAGES OR OTHER LIABILITY, WHETHER IN AN ACTION OF CONTRACT, TORT OR OTHERWISE, ARISING FROM, OUT OF OR IN CONNECTION WITH THE SOFTWARE OR THE USE OR OTHER DEALINGS IN THE SOFTWARE.

Copyright © 2009 MIT

This product includes software developed by Jean-loup Gailly and Mark Adler. This software is provided 'as-is', without any express or implied warranty. In no event will the authors be held liable for any damages arising from the use of this software.

Copyright (c) 1995-2005 Jean-loup Gailly and Mark Adler

This software is based in part on the work of the Independent JPEG Group (<http://www.ijg.org/>).

This product includes software developed by the Dojo Foundation (<http://dojotoolkit.org>).

THIS SOFTWARE IS PROVIDED BY THE COPYRIGHT HOLDERS AND CONTRIBUTORS "AS IS" AND ANY EXPRESS OR IMPLIED WARRANTIES, INCLUDING, BUT NOT LIMITED TO, THE IMPLIED WARRANTIES OF MERCHANTABILITY AND FITNESS FOR A PARTICULAR PURPOSE ARE DISCLAIMED. IN NO EVENT SHALL THE COPYRIGHT OWNER OR CONTRIBUTORS BE LIABLE FOR ANY DIRECT, INDIRECT, INCIDENTAL, SPECIAL, EXEMPLARY, OR CONSEQUENTIAL DAMAGES (INCLUDING, BUT NOT LIMITED TO, PROCUREMENT OF SUBSTITUTE GOODS OR SERVICES; LOSS OF USE, DATA, OR PROFITS; OR BUSINESS INTERRUPTION) HOWEVER

CAUSED AND ON ANY THEORY OF LIABILITY, WHETHER IN CONTRACT, STRICT LIABILITY, OR TORT (INCLUDING NEGLIGENCE OR OTHERWISE) ARISING IN ANY WAY OUT OF THE USE OF THIS SOFTWARE, EVEN IF ADVISED OF THE POSSIBILITY OF SUCH DAMAGE.

Copyright (c) 2005-2009, The Dojo Foundation. All rights reserved.

This product includes software developed by W3C.

Copyright © 2009 World Wide Web Consortium, (Massachusetts Institute of Technology, Institut National de Recherche en Informatique et en Automatique, Keio University). All Rights Reserved. (<http://www.w3.org/Consortium/Legal/>)

This product includes software developed by Mathew R. Miller (<http://www.bluecreststudios.com>).

Copyright (c) 1999-2002 ComputerSmarts. All rights reserved.

This product includes software developed by Shaun Wilde and distributed via Code Project Open License (<http://www.codeproject.com>).

THIS WORK IS PROVIDED "AS IS", "WHERE IS" AND "AS AVAILABLE", WITHOUT ANY EXPRESS OR IMPLIED WARRANTIES OR CONDITIONS OR GUARANTEES. YOU, THE USER, ASSUME ALL RISK IN ITS USE, INCLUDING COPYRIGHT INFRINGEMENT, PATENT INFRINGEMENT, SUITABILITY, ETC. AUTHOR EXPRESSLY DISCLAIMS ALL EXPRESS, IMPLIED OR STATUTORY WARRANTIES OR CONDITIONS, INCLUDING WITHOUT LIMITATION, WARRANTIES OR CONDITIONS OF MERCHANTABILITY, MERCHANTABLE QUALITY OR FITNESS FOR A PARTICULAR PURPOSE, OR ANY WARRANTY OF TITLE OR NON-INFRINGEMENT, OR THAT THE WORK (OR ANY PORTION THEREOF) IS CORRECT, USEFUL, BUG-FREE OR FREE OF VIRUSES. YOU MUST PASS THIS DISCLAIMER ON WHENEVER YOU DISTRIBUTE THE WORK OR DERIVATIVE WORKS.

This product includes software developed by Chris Maunder and distributed via Code Project Open License (<http://www.codeproject.com>).

THIS WORK IS PROVIDED "AS IS", "WHERE IS" AND "AS AVAILABLE", WITHOUT ANY EXPRESS OR IMPLIED WARRANTIES OR CONDITIONS OR GUARANTEES. YOU, THE USER, ASSUME ALL RISK IN ITS USE, INCLUDING COPYRIGHT INFRINGEMENT, PATENT INFRINGEMENT, SUITABILITY, ETC. AUTHOR EXPRESSLY DISCLAIMS ALL EXPRESS, IMPLIED OR STATUTORY WARRANTIES OR CONDITIONS, INCLUDING WITHOUT LIMITATION, WARRANTIES OR CONDITIONS OF MERCHANTABILITY, MERCHANTABLE QUALITY OR FITNESS FOR A PARTICULAR PURPOSE, OR ANY WARRANTY OF TITLE OR NON-INFRINGEMENT, OR THAT THE WORK (OR ANY PORTION THEREOF) IS CORRECT, USEFUL, BUG-FREE OR FREE OF VIRUSES. YOU MUST PASS THIS DISCLAIMER ON WHENEVER YOU DISTRIBUTE THE WORK OR DERIVATIVE WORKS.

This product includes software developed by PJ Arends and distributed via Code Project Open License (<http://www.codeproject.com>).

THIS WORK IS PROVIDED "AS IS", "WHERE IS" AND "AS AVAILABLE", WITHOUT ANY EXPRESS OR IMPLIED WARRANTIES OR CONDITIONS OR GUARANTEES. YOU, THE USER, ASSUME ALL RISK IN ITS USE, INCLUDING COPYRIGHT INFRINGEMENT, PATENT INFRINGEMENT, SUITABILITY, ETC. AUTHOR EXPRESSLY DISCLAIMS ALL EXPRESS, IMPLIED OR STATUTORY WARRANTIES OR CONDITIONS, INCLUDING WITHOUT LIMITATION, WARRANTIES OR CONDITIONS OF MERCHANTABILITY, MERCHANTABLE QUALITY OR FITNESS FOR A PARTICULAR PURPOSE, OR ANY WARRANTY OF TITLE OR NON-INFRINGEMENT, OR THAT THE WORK (OR ANY PORTION THEREOF) IS CORRECT, USEFUL, BUG-FREE OR FREE OF VIRUSES. YOU MUST PASS THIS DISCLAIMER ON WHENEVER YOU DISTRIBUTE THE WORK OR DERIVATIVE WORKS.

This product includes software developed by Erwin Tratar. This source code and all accompanying material is copyright (c) 1998-1999 Erwin Tratar. All rights reserved.

THIS SOFTWARE IS PROVIDED "AS IS" WITHOUT EXPRESS OR IMPLIED WARRANTY. USE IT AT YOUR OWN RISK! THE AUTHOR ACCEPTS NO LIABILITY FOR ANY DAMAGE/LOSS OF BUSINESS THAT THIS PRODUCT MAY

CAUSE.

This product includes software developed by Sam Leffler of Silicon Graphics.

THE SOFTWARE IS PROVIDED "AS IS" AND WITHOUT WARRANTY OF ANY KIND, EXPRESS, IMPLIED OR OTHERWISE, INCLUDING WITHOUT LIMITATION, ANY WARRANTY OF MERCHANTABILITY OR FITNESS FOR A PARTICULAR PURPOSE.

IN NO EVENT SHALL SAM LEFFLER OR SILICON GRAPHICS BE LIABLE FOR ANY SPECIAL, INCIDENTAL, INDIRECT OR CONSEQUENTIAL DAMAGES OF ANY KIND, OR ANY DAMAGES WHATSOEVER RESULTING FROM LOSS OF USE, DATA OR PROFITS, WHETHER OR NOT ADVISED OF THE POSSIBILITY OF DAMAGE, AND ON ANY THEORY OF LIABILITY, ARISING OUT OF OR IN CONNECTION WITH THE USE OR PERFORMANCE OF THIS SOFTWARE

Copyright (c) 1988-1997 Sam Leffler

Copyright (c) 1991-1997 Silicon Graphics, Inc.

This product includes software developed by Guy Eric Schalnat, Andreas Dilger, Glenn Randers-Pehrson (current maintainer), and others. (<http://www.libpng.org>)

The PNG Reference Library is supplied "AS IS". The Contributing Authors and Group 42, Inc. disclaim all warranties, expressed or implied, including, without limitation, the warranties of merchantability and of fitness for any purpose. The Contributing Authors and Group 42, Inc. assume no liability for direct, indirect, incidental, special, exemplary, or consequential damages, which may result from the use of the PNG Reference Library, even if advised of the possibility of such damage.

This product includes software components distributed by the Cryptix Foundation.

THIS SOFTWARE IS PROVIDED BY THE CRYPTIX FOUNDATION LIMITED AND CONTRIBUTORS "AS IS" AND ANY EXPRESS OR IMPLIED WARRANTIES, INCLUDING, BUT NOT LIMITED TO, THE IMPLIED WARRANTIES OF MERCHANTABILITY AND FITNESS FOR A PARTICULAR PURPOSE ARE DISCLAIMED. IN NO EVENT SHALL THE CRYPTIX FOUNDATION LIMITED OR CONTRIBUTORS BE LIABLE FOR ANY DIRECT, INDIRECT, INCIDENTAL, SPECIAL, EXEMPLARY, OR CONSEQUENTIAL DAMAGES (INCLUDING, BUT NOT LIMITED TO, PROCUREMENT OF SUBSTITUTE GOODS OR SERVICES; LOSS OF USE, DATA, OR PROFITS; OR BUSINESS INTERRUPTION) HOWEVER CAUSED AND ON ANY THEORY OF LIABILITY, WHETHER IN CONTRACT, STRICT LIABILITY, OR TORT (INCLUDING NEGLIGENCE OR OTHERWISE) ARISING IN ANY WAY OUT OF THE USE OF THIS SOFTWARE, EVEN IF ADVISED OF THE POSSIBILITY OF SUCH DAMAGE

Copyright © 1995-2005 The Cryptix Foundation Limited. All rights reserved.

This product includes software components distributed by Sun Microsystems.

This software is provided "AS IS," without a warranty of any kind. ALL EXPRESS OR IMPLIED CONDITIONS, REPRESENTATIONS AND WARRANTIES, INCLUDING ANY IMPLIED WARRANTY OF MERCHANTABILITY, FITNESS FOR A PARTICULAR PURPOSE OR NON-INFRINGEMENT, ARE HEREBY EXCLUDED. SUN AND ITS LICENSORS SHALL NOT BE LIABLE FOR ANY DAMAGES SUFFERED BY LICENSEE AS A RESULT OF USING, MODIFYING OR DISTRIBUTING THE SOFTWARE OR ITS DERIVATIVES. IN NO EVENT WILL SUN OR ITS LICENSORS BE LIABLE FOR ANY LOST REVENUE, PROFIT OR DATA, OR FOR DIRECT, INDIRECT, SPECIAL, CONSEQUENTIAL, INCIDENTAL OR PUNITIVE DAMAGES, HOWEVER CAUSED AND REGARDLESS OF THE THEORY OF LIABILITY, ARISING OUT OF THE USE OF OR INABILITY TO USE SOFTWARE, EVEN IF SUN HAS BEEN ADVISED OF THE POSSIBILITY OF SUCH DAMAGES.

Copyright (c) 1998 Sun Microsystems, Inc. All Rights Reserved.

This product includes software components distributed by Dennis M. Sosnoski.

THIS SOFTWARE IS PROVIDED BY THE COPYRIGHT HOLDERS AND CONTRIBUTORS "AS IS" AND ANY EXPRESS OR IMPLIED WARRANTIES, INCLUDING, BUT NOT LIMITED TO, THE IMPLIED WARRANTIES OF

MERCHANTABILITY AND FITNESS FOR A PARTICULAR PURPOSE ARE DISCLAIMED. IN NO EVENT SHALL THE COPYRIGHT OWNER OR CONTRIBUTORS BE LIABLE FOR ANY DIRECT, INDIRECT, INCIDENTAL, SPECIAL, EXEMPLARY, OR CONSEQUENTIAL DAMAGES (INCLUDING, BUT NOT LIMITED TO, PROCUREMENT OF SUBSTITUTE GOODS OR SERVICES; LOSS OF USE, DATA, OR PROFITS; OR BUSINESS INTERRUPTION) HOWEVER CAUSED AND ON ANY THEORY OF LIABILITY, WHETHER IN CONTRACT, STRICT LIABILITY, OR TORT (INCLUDING NEGLIGENCE OR OTHERWISE) ARISING IN ANY WAY OUT OF THE USE OF THIS SOFTWARE, EVEN IF ADVISED OF THE POSSIBILITY OF SUCH DAMAGE.

Copyright © 2003-2007 Dennis M. Sosnoski. All Rights Reserved

It also includes materials licensed under Apache 1.1 and the following XPP3 license

THIS SOFTWARE IS PROVIDED "AS IS" AND ANY EXPRESSED OR IMPLIED WARRANTIES, INCLUDING, BUT NOT LIMITED TO, THE IMPLIED WARRANTIES OF MERCHANTABILITY AND FITNESS FOR A PARTICULAR PURPOSE ARE DISCLAIMED. IN NO EVENT SHALL THE COPYRIGHT OWNER OR CONTRIBUTORS BE LIABLE FOR ANY DIRECT, INDIRECT, INCIDENTAL, SPECIAL, EXEMPLARY, OR CONSEQUENTIAL DAMAGES (INCLUDING, BUT NOT LIMITED TO, PROCUREMENT OF SUBSTITUTE GOODS OR SERVICES; LOSS OF USE, DATA, OR PROFITS; OR BUSINESS INTERRUPTION) HOWEVER CAUSED AND ON ANY THEORY OF LIABILITY, WHETHER IN CONTRACT, STRICT LIABILITY, OR TORT (INCLUDING NEGLIGENCE OR OTHERWISE) ARISING IN ANY WAY OUT OF THE USE OF THIS SOFTWARE, EVEN IF ADVISED OF THE POSSIBILITY OF SUCH DAMAGE.

Copyright © 2002 Extreme! Lab, Indiana University. All Rights Reserved

This product includes software components distributed by CodeProject. This software contains material that is © 1994-2005 The Ultimate Toolbox, all rights reserved.

This product includes software components distributed by Geir Landro.

Copyright © 2001-2003 Geir Landro (drop@destroydrop.com) JavaScript Tree - [www.destroydrop.com/hjavadscripts/tree/version 0.96](http://www.destroydrop.com/hjavadscripts/tree/version0.96)

This product includes software components distributed by the Hypersonic SQL Group.

THIS SOFTWARE IS PROVIDED BY THE COPYRIGHT HOLDERS AND CONTRIBUTORS "AS IS" AND ANY EXPRESS OR IMPLIED WARRANTIES, INCLUDING, BUT NOT LIMITED TO, THE IMPLIED WARRANTIES OF MERCHANTABILITY AND FITNESS FOR A PARTICULAR PURPOSE ARE DISCLAIMED. IN NO EVENT SHALL THE COPYRIGHT OWNER OR CONTRIBUTORS BE LIABLE FOR ANY DIRECT, INDIRECT, INCIDENTAL, SPECIAL, EXEMPLARY, OR CONSEQUENTIAL DAMAGES (INCLUDING, BUT NOT LIMITED TO, PROCUREMENT OF SUBSTITUTE GOODS OR SERVICES; LOSS OF USE, DATA, OR PROFITS; OR BUSINESS INTERRUPTION) HOWEVER CAUSED AND ON ANY THEORY OF LIABILITY, WHETHER IN CONTRACT, STRICT LIABILITY, OR TORT (INCLUDING NEGLIGENCE OR OTHERWISE) ARISING IN ANY WAY OUT OF THE USE OF THIS SOFTWARE, EVEN IF ADVISED OF THE POSSIBILITY OF SUCH DAMAGE

Copyright © 1995-2000 by the Hypersonic SQL Group. All Rights Reserved

This product includes software components distributed by the International Business Machines Corporation and others.

THE SOFTWARE IS PROVIDED "AS IS", WITHOUT WARRANTY OF ANY KIND, EXPRESS OR IMPLIED, INCLUDING BUT NOT LIMITED TO THE WARRANTIES OF MERCHANTABILITY, FITNESS FOR A PARTICULAR PURPOSE AND NONINFRINGEMENT. IN NO EVENT SHALL THE AUTHORS OR COPYRIGHT HOLDERS BE LIABLE FOR ANY CLAIM, DAMAGES OR OTHER LIABILITY, WHETHER IN AN ACTION OF CONTRACT, TORT OR OTHERWISE, ARISING FROM, OUT OF OR IN CONNECTION WITH THE SOFTWARE OR THE USE OR OTHER DEALINGS IN THE SOFTWARE.

Copyright (c) 1995-2009 International Business Machines Corporation and others. All rights reserved.

This product includes software components distributed by the University of Coimbra.

University of Coimbra distributes this software in the hope that it will be useful but DISCLAIMS ALL WARRANTIES WITH REGARD TO IT, including all implied warranties of MERCHANTABILITY or FITNESS FOR A PARTICULAR PURPOSE. In no event shall University of Coimbra be liable for any special, indirect or consequential damages (or any damages whatsoever) resulting from loss of use, data or profits, whether in an action of contract, negligence or other tortious action, arising out of or in connection with the use or performance of this software.

Copyright (c) 2000 University of Coimbra, Portugal. All Rights Reserved.

This product includes software components distributed by Steve Souza.

THIS SOFTWARE IS PROVIDED BY THE AUTHOR AND CONTRIBUTORS "AS IS" AND ANY EXPRESS OR IMPLIED WARRANTIES, INCLUDING, BUT NOT LIMITED TO, THE IMPLIED WARRANTIES OF MERCHANTABILITY AND FITNESS FOR A PARTICULAR PURPOSE ARE DISCLAIMED. IN NO EVENT SHALL THE COPYRIGHT OWNER OR CONTRIBUTORS BE LIABLE FOR ANY DIRECT, INDIRECT, INCIDENTAL, SPECIAL, EXEMPLARY, OR CONSEQUENTIAL DAMAGES (INCLUDING, BUT NOT LIMITED TO, PROCUREMENT OF SUBSTITUTE GOODS OR SERVICES; LOSS OF USE, DATA, OR PROFITS; OR BUSINESS INTERRUPTION) HOWEVER CAUSED AND ON ANY THEORY OF LIABILITY, WHETHER IN CONTRACT, STRICT LIABILITY, OR TORT (INCLUDING NEGLIGENCE OR OTHERWISE) ARISING IN ANY WAY OUT OF THE USE OF THIS SOFTWARE, EVEN IF ADVISED OF THE POSSIBILITY OF SUCH DAMAGE.

Copyright © 2002, Steve Souza (admin@jamonapi.com). All Rights Reserved.

This product includes software developed by the OpenSymphony Group (<http://www.opensymphony.com/>.)"

Copyright © 2001-2004 The OpenSymphony Group. All Rights Reserved.

PANTONE (R) Colors displayed in the software application or in the user documentation may not match PANTONE-identified standards. Consult current PANTONE Color Publications for accurate color. PANTONE(R) and other Pantone LLC trademarks are the property of Pantone LLC. (C) Pantone LLC, 2011.

Pantone LLC is the copyright owner of color data and/or software which are licensed to Oracle to distribute for use only in combination with Oracle Documaker. PANTONE Color Data and/or Software shall not be copied onto another disk or into memory unless part of the execution of Oracle Documaker.

This product includes software developed by Dave Gamble and distributed via SourceForge.net (<http://sourceforge.net/projects/cjson/>)

THE SOFTWARE IS PROVIDED "AS IS", WITHOUT WARRANTY OF ANY KIND, EXPRESS OR IMPLIED, INCLUDING BUT NOT LIMITED TO THE WARRANTIES OF MERCHANTABILITY, FITNESS FOR A PARTICULAR PURPOSE AND NONINFRINGEMENT. IN NO EVENT SHALL THE AUTHORS OR COPYRIGHT HOLDERS BE LIABLE FOR ANY CLAIM, DAMAGES OR OTHER LIABILITY, WHETHER IN AN ACTION OF CONTRACT, TORT OR OTHERWISE, ARISING FROM, OUT OF OR IN CONNECTION WITH THE SOFTWARE OR THE USE OR OTHER DEALINGS IN THE SOFTWARE.

Copyright (c) 2009 Dave Gamble

This product includes software developed by the Zxing Project.

THE SOFTWARE IS PROVIDED "AS IS", WITHOUT WARRANTY OF ANY KIND, EXPRESS OR IMPLIED, INCLUDING BUT NOT LIMITED TO THE WARRANTIES OF MERCHANTABILITY, FITNESS FOR A PARTICULAR PURPOSE AND NONINFRINGEMENT. IN NO EVENT SHALL THE AUTHORS OR COPYRIGHT HOLDERS BE LIABLE FOR ANY CLAIM, DAMAGES OR OTHER LIABILITY, WHETHER IN AN ACTION OF CONTRACT, TORT OR OTHERWISE, ARISING FROM, OUT OF OR IN CONNECTION WITH THE SOFTWARE OR THE USE OR OTHER DEALINGS IN THE SOFTWARE.

Copyright (c) 2013 Zxing Project (<https://github.com/zxing/zxing>)

This product includes software developed by the Wintertree software.

THE SOFTWARE IS PROVIDED "AS IS", WITHOUT WARRANTY OF ANY KIND, EXPRESS OR IMPLIED, INCLUDING BUT NOT LIMITED TO THE WARRANTIES OF MERCHANTABILITY, FITNESS FOR A PARTICULAR PURPOSE AND NONINFRINGEMENT. IN NO EVENT SHALL THE AUTHORS OR COPYRIGHT HOLDERS BE LIABLE FOR ANY CLAIM, DAMAGES OR OTHER LIABILITY, WHETHER IN AN ACTION OF CONTRACT, TORT OR OTHERWISE, ARISING FROM, OUT OF OR IN CONNECTION WITH THE SOFTWARE OR THE USE OR OTHER DEALINGS IN THE SOFTWARE.

The Sentry Spelling-Checker Engine Copyright (c) 1993 Wintertree (<https://wintertree-software.com/dev/ssce/windows/index.html>)

Freemarker Copyright (c) 2003 The Visigoth Software Society. All rights reserved.

THIS SOFTWARE IS PROVIDED "AS IS" AND ANY EXPRESSED OR IMPLIED WARRANTIES, INCLUDING, BUT NOT LIMITED TO, THE IMPLIED WARRANTIES OF MERCHANTABILITY AND FITNESS FOR A PARTICULAR PURPOSE ARE DISCLAIMED. IN NO EVENT SHALL THE VISIGOTH SOFTWARE SOCIETY OR ITS CONTRIBUTORS BE LIABLE FOR ANY DIRECT, INDIRECT, INCIDENTAL, SPECIAL, EXEMPLARY, OR CONSEQUENTIAL DAMAGES (INCLUDING, BUT NOT LIMITED TO, PROCUREMENT OF SUBSTITUTE GOODS OR SERVICES; LOSS OF USE, DATA, OR PROFITS; OR BUSINESS INTERRUPTION) HOWEVER CAUSED AND ON ANY THEORY OF LIABILITY, WHETHER IN CONTRACT, STRICT LIABILITY, OR TORT (INCLUDING NEGLIGENCE OR OTHERWISE) ARISING IN ANY WAY OUT OF THE USE OF THIS SOFTWARE, EVEN IF ADVISED OF THE POSSIBILITY OF SUCH DAMAGE.

This software consists of voluntary contributions made by many individuals on behalf of the Visigoth Software Society. For more information on the Visigoth Software Society, please see <http://www.visigoths.org/>

Copyright (c) 2000,2002,2003 INRIA, France Telecom (<http://asm.ow2.org/>) All rights reserved.

THIS SOFTWARE IS PROVIDED BY THE COPYRIGHT HOLDERS AND CONTRIBUTORS "AS IS" AND ANY EXPRESS OR IMPLIED WARRANTIES, INCLUDING, BUT NOT LIMITED TO, THE IMPLIED WARRANTIES OF MERCHANTABILITY AND FITNESS FOR A PARTICULAR PURPOSE ARE DISCLAIMED. IN NO EVENT SHALL THE COPYRIGHT OWNER OR CONTRIBUTORS BE LIABLE FOR ANY DIRECT, INDIRECT, INCIDENTAL, SPECIAL, EXEMPLARY, OR CONSEQUENTIAL DAMAGES (INCLUDING, BUT NOT LIMITED TO, PROCUREMENT OF SUBSTITUTE GOODS OR SERVICES; LOSS OF USE, DATA, OR PROFITS; OR BUSINESS INTERRUPTION) HOWEVER CAUSED AND ON ANY THEORY OF LIABILITY, WHETHER IN CONTRACT, STRICT LIABILITY, OR TORT (INCLUDING NEGLIGENCE OR OTHERWISE) ARISING IN ANY WAY OUT OF THE USE OF THIS SOFTWARE, EVEN IF ADVISED OF THE POSSIBILITY OF SUCH DAMAGE.

Copyright© 2001-2016 ej-technologies GmbH (<https://www.ej-technologies.com/products/install4j/overview.html>) All rights reserved.

THIS SOFTWARE IS PROVIDED BY THE COPYRIGHT HOLDERS AND CONTRIBUTORS "AS IS" AND ANY EXPRESS OR IMPLIED WARRANTIES, INCLUDING, BUT NOT LIMITED TO, THE IMPLIED WARRANTIES OF MERCHANTABILITY AND FITNESS FOR A PARTICULAR PURPOSE ARE DISCLAIMED. IN NO EVENT SHALL THE COPYRIGHT OWNER OR CONTRIBUTORS BE LIABLE FOR ANY DIRECT, INDIRECT, INCIDENTAL, SPECIAL, EXEMPLARY, OR CONSEQUENTIAL DAMAGES (INCLUDING, BUT NOT LIMITED TO, PROCUREMENT OF SUBSTITUTE GOODS OR SERVICES; LOSS OF USE, DATA, OR PROFITS; OR BUSINESS INTERRUPTION) HOWEVER CAUSED AND ON ANY THEORY OF LIABILITY, WHETHER IN CONTRACT, STRICT LIABILITY, OR TORT (INCLUDING NEGLIGENCE OR OTHERWISE) ARISING IN ANY WAY OUT OF THE USE OF THIS SOFTWARE, EVEN IF ADVISED OF THE POSSIBILITY OF SUCH DAMAGE.

This component is distributed with the following third party components: (1) Third party components licensed under EPL v1.0; (2) JARGS (Stephen Purcell); JDOM (Brett McLaughlin & Jason Hunter); and (3) ORO (Apache Software Foundation). Please see EPL v1.0 and applicable components (#2072, 2686, 2074) for restrictions/requirements.

Copyright 2001-2005 (C) MetaStuff, Ltd.(<http://www.dom4j.org>) All Rights Reserved.

THIS SOFTWARE IS PROVIDED BY METASTUFF, LTD. AND CONTRIBUTORS "AS IS" AND ANY EXPRESSED OR IMPLIED WARRANTIES, INCLUDING, BUT NOT LIMITED TO, THE IMPLIED WARRANTIES OF MERCHANTABILITY AND FITNESS FOR A PARTICULAR PURPOSE ARE DISCLAIMED. IN NO EVENT SHALL METASTUFF, LTD. OR ITS CONTRIBUTORS BE LIABLE FOR ANY DIRECT, INDIRECT, INCIDENTAL, SPECIAL, EXEMPLARY, OR CONSEQUENTIAL DAMAGES (INCLUDING, BUT NOT LIMITED TO, PROCUREMENT OF SUBSTITUTE GOODS OR SERVICES; LOSS OF USE, DATA, OR PROFITS; OR BUSINESS INTERRUPTION) HOWEVER CAUSED AND ON ANY THEORY OF LIABILITY, WHETHER IN CONTRACT, STRICT LIABILITY, OR TORT (INCLUDING NEGLIGENCE OR OTHERWISE) ARISING IN ANY WAY OUT OF THE USE OF THIS SOFTWARE, EVEN IF ADVISED OF THE POSSIBILITY OF SUCH DAMAGE.

Little CMS Copyright (c) 1998-2011 (<http://www.littlecms.com/>) All Rights Reserved.

THE SOFTWARE IS PROVIDED "AS IS", WITHOUT WARRANTY OF ANY KIND, EXPRESS OR IMPLIED, INCLUDING BUT NOT LIMITED TO THE WARRANTIES OF MERCHANTABILITY, FITNESS FOR A PARTICULAR PURPOSE AND NONINFRINGEMENT. IN NO EVENT SHALL THE AUTHORS OR COPYRIGHT HOLDERS BE LIABLE FOR ANY CLAIM, DAMAGES OR OTHER LIABILITY, WHETHER IN AN ACTION OF CONTRACT, TORT OR OTHERWISE, ARISING FROM, OUT OF OR IN CONNECTION WITH THE SOFTWARE OR THE USE OR OTHER DEALINGS IN THE SOFTWARE.

Marti Maria Sagner Permission is hereby granted, free of charge, to any person obtaining a copy of this software and associated documentation files (the "Software"), to deal in the Software without restriction, including without limitation the rights to use, copy, modify, merge, publish, distribute, sublicense, and/or sell copies of the Software, and to permit persons to whom the Software is furnished to do so, subject to the following conditions: The above copyright notice and this permission notice shall be included in all copies or substantial portions of the Software.

Copyright (c) 2002-2007, Communications and Remote Sensing Laboratory, Universite catholique de Louvain (UCL), Belgium

Copyright (c) 2002-2007, Professor Benoit Macq

Copyright (c) 2001-2003, David Janssens

Copyright (c) 2002-2003, Yannick Verschuere

Copyright (c) 2003-2007, Francois-Olivier Devaux and Antonin Descampe

Copyright (c) 2005, Herve Drolon, FreeImage Team

All rights reserved.

THIS SOFTWARE IS PROVIDED BY THE COPYRIGHT HOLDERS AND CONTRIBUTORS "AS IS" AND ANY EXPRESS OR IMPLIED WARRANTIES, INCLUDING, BUT NOT LIMITED TO, THE IMPLIED WARRANTIES OF MERCHANTABILITY AND FITNESS FOR A PARTICULAR PURPOSE ARE DISCLAIMED. IN NO EVENT SHALL THE COPYRIGHT OWNER OR CONTRIBUTORS BE LIABLE FOR ANY DIRECT, INDIRECT, INCIDENTAL, SPECIAL, EXEMPLARY, OR CONSEQUENTIAL DAMAGES (INCLUDING, BUT NOT LIMITED TO, PROCUREMENT OF SUBSTITUTE GOODS OR SERVICES; LOSS OF USE, DATA, OR PROFITS; OR BUSINESS INTERRUPTION) HOWEVER CAUSED AND ON ANY THEORY OF LIABILITY, WHETHER IN CONTRACT, STRICT LIABILITY, OR TORT (INCLUDING NEGLIGENCE OR OTHERWISE) ARISING IN ANY WAY OUT OF THE USE OF THIS SOFTWARE, EVEN IF ADVISED OF THE POSSIBILITY OF SUCH DAMAGE.

Copyright (c) 2004-2013 QOS.ch (<http://www.qos.ch/shop/index>) All rights reserved.

THE SOFTWARE IS PROVIDED "AS IS", WITHOUT WARRANTY OF ANY KIND, EXPRESS OR IMPLIED, INCLUDING BUT NOT LIMITED TO THE WARRANTIES OF MERCHANTABILITY, FITNESS FOR A PARTICULAR PURPOSE AND NONINFRINGEMENT. IN NO EVENT SHALL THE AUTHORS OR COPYRIGHT HOLDERS BE LIABLE FOR ANY CLAIM, DAMAGES OR OTHER LIABILITY, WHETHER IN AN ACTION OF CONTRACT, TORT OR OTHERWISE, ARISING FROM, OUT OF OR IN CONNECTION WITH THE SOFTWARE OR THE USE OR OTHER DEALINGS IN THE SOFTWARE.

Permission is hereby granted, free of charge, to any person obtaining a copy of this software and associated documentation files (the "Software"), to deal in the Software without restriction, including without limitation the rights to use, copy, modify, merge, publish, distribute, sublicense, and/or sell copies of the Software, and to permit persons to whom the Software is furnished to do so, subject to the following conditions: The above copyright notice and this permission notice shall be included in all copies or substantial portions of the Software.

The Code Project Open License (CPOL) 1.02

Copyright © CodeProject, 1999-2016 (<http://www.codeproject.com/info/cpol10.aspx>) All Rights Reserved.

THE SOFTWARE IS PROVIDED "AS IS", WITHOUT WARRANTY OF ANY KIND, EXPRESS OR IMPLIED, INCLUDING BUT NOT LIMITED TO THE WARRANTIES OF MERCHANTABILITY, FITNESS FOR A PARTICULAR PURPOSE AND NONINFRINGEMENT. IN NO EVENT SHALL THE AUTHORS OR COPYRIGHT HOLDERS BE LIABLE FOR ANY CLAIM, DAMAGES OR OTHER LIABILITY, WHETHER IN AN ACTION OF CONTRACT, TORT OR OTHERWISE, ARISING FROM, OUT OF OR IN CONNECTION WITH THE SOFTWARE OR THE USE OR OTHER DEALINGS IN THE SOFTWARE.

Copyright (c) 1998, 1999, 2000 Thai Open Source Software Center Ltd and Clark Cooper

Copyright (c) 2001, 2002, 2003, 2004, 2005, 2006 Expat maintainers (<http://expat.sourceforge.net/>)

All Rights Reserved.

THE SOFTWARE IS PROVIDED "AS IS", WITHOUT WARRANTY OF ANY KIND, EXPRESS OR IMPLIED, INCLUDING BUT NOT LIMITED TO THE WARRANTIES OF MERCHANTABILITY, FITNESS FOR A PARTICULAR PURPOSE AND NONINFRINGEMENT. IN NO EVENT SHALL THE AUTHORS OR COPYRIGHT HOLDERS BE LIABLE FOR ANY CLAIM, DAMAGES OR OTHER LIABILITY, WHETHER IN AN ACTION OF CONTRACT, TORT OR OTHERWISE, ARISING FROM, OUT OF OR IN CONNECTION WITH THE SOFTWARE OR THE USE OR OTHER DEALINGS IN THE SOFTWARE.

Copyright (c) 2002-2010 Atsuhiko Yamanaka, JCraft,Inc(<http://www.jcraft.com/jsch/>) All rights reserved.

THIS SOFTWARE IS PROVIDED "AS IS" AND ANY EXPRESSED OR IMPLIED WARRANTIES, INCLUDING, BUT NOT LIMITED TO, THE IMPLIED WARRANTIES OF MERCHANTABILITY AND FITNESS FOR A PARTICULAR PURPOSE ARE DISCLAIMED. IN NO EVENT SHALL JCRAFT, INC. OR ANY CONTRIBUTORS TO THIS SOFTWARE BE LIABLE FOR ANY DIRECT, INDIRECT, INCIDENTAL, SPECIAL, EXEMPLARY, OR CONSEQUENTIAL DAMAGES (INCLUDING, BUT NOT LIMITED TO, PROCUREMENT OF SUBSTITUTE GOODS OR SERVICES; LOSS OF USE, DATA, OR PROFITS; OR BUSINESS INTERRUPTION) HOWEVER CAUSED AND ON ANY THEORY OF LIABILITY, WHETHER IN CONTRACT, STRICT LIABILITY, OR TORT (INCLUDING NEGLIGENCE OR OTHERWISE) ARISING IN ANY WAY OUT OF THE USE OF THIS SOFTWARE, EVEN IF ADVISED OF THE POSSIBILITY OF SUCH DAMAGE.

This product includes software developed by Christian Bach and distributed via (<http://tablesorter.com/docs/>)

All rights reserved.

THE SOFTWARE IS PROVIDED "AS IS", WITHOUT WARRANTY OF ANY KIND, EXPRESS OR IMPLIED, INCLUDING BUT NOT LIMITED TO THE WARRANTIES OF MERCHANTABILITY, FITNESS FOR A PARTICULAR PURPOSE AND NONINFRINGEMENT. IN NO EVENT SHALL THE AUTHORS OR COPYRIGHT HOLDERS BE LIABLE FOR ANY CLAIM, DAMAGES OR OTHER LIABILITY, WHETHER IN AN ACTION OF CONTRACT, TORT OR OTHERWISE, ARISING FROM, OUT OF OR IN CONNECTION WITH THE SOFTWARE OR THE USE OR OTHER DEALINGS IN THE SOFTWARE.

Copyright (c) 2007 Christian Bach

This product includes software developed by Dmitry Baranovskiy and distributed via (<https://github.com/DmitryBaranovskiy>)

All rights reserved.

THE SOFTWARE IS PROVIDED "AS IS", WITHOUT WARRANTY OF ANY KIND, EXPRESS OR IMPLIED, INCLUDING BUT NOT LIMITED TO THE WARRANTIES OF MERCHANTABILITY, FITNESS FOR A PARTICULAR PURPOSE AND NONINFRINGEMENT. IN NO EVENT SHALL THE AUTHORS OR COPYRIGHT HOLDERS BE LIABLE FOR ANY CLAIM, DAMAGES OR OTHER LIABILITY, WHETHER IN AN ACTION OF CONTRACT, TORT OR OTHERWISE, ARISING FROM, OUT OF OR IN CONNECTION WITH THE SOFTWARE OR THE USE OR OTHER DEALINGS IN THE SOFTWARE.

Copyright © 2008 Dmitry Baranovskiy.

This product includes software developed by John Resig and distributed via (<http://jquery.com/>) All rights reserved.

THE SOFTWARE IS PROVIDED "AS IS", WITHOUT WARRANTY OF ANY KIND, EXPRESS OR IMPLIED, INCLUDING BUT NOT LIMITED TO THE WARRANTIES OF MERCHANTABILITY, FITNESS FOR A PARTICULAR PURPOSE AND NONINFRINGEMENT. IN NO EVENT SHALL THE AUTHORS OR COPYRIGHT HOLDERS BE LIABLE FOR ANY CLAIM, DAMAGES OR OTHER LIABILITY, WHETHER IN AN ACTION OF CONTRACT, TORT OR OTHERWISE, ARISING FROM, OUT OF OR IN CONNECTION WITH THE SOFTWARE OR THE USE OR OTHER DEALINGS IN THE SOFTWARE.

Copyright (c) 2011 John Resig

Copyright (c) Monotype Imaging, Inc (<http://www.monotype.com/>) All rights reserved.

Monotype®, Albany®, Andale®, Cumberland®, Thorndale®, MT®, WorldType® is a trademark of Monotype Imaging, Inc., registered in U.S. Patent and Trademark Office and certain other jurisdictions.

THE SOFTWARE IS PROVIDED "AS IS", WITHOUT WARRANTY OF ANY KIND, EXPRESS OR IMPLIED, INCLUDING BUT NOT LIMITED TO THE WARRANTIES OF MERCHANTABILITY, FITNESS FOR A PARTICULAR PURPOSE AND NONINFRINGEMENT. IN NO EVENT SHALL THE AUTHORS OR COPYRIGHT HOLDERS BE LIABLE FOR ANY CLAIM, DAMAGES OR OTHER LIABILITY, WHETHER IN AN ACTION OF CONTRACT, TORT OR OTHERWISE, ARISING FROM, OUT OF OR IN CONNECTION WITH THE SOFTWARE OR THE USE OR OTHER DEALINGS IN THE SOFTWARE.

CONTENTS

Introduction

- About This Guide
- What Are the Common Objects?
 - Version 1 Common Objects
 - Version 2 Common Objects
 - Unicode Support for Specific Data Types
 - Editing Configuration Files with Unicode

Microsoft Windows

- System Requirements
 - Hardware Requirements
 - Software Requirements
- Installing the Common Objects
 - To Install Common Objects

UNIX

- System Requirements
 - Linux (32-bit)
- Installing the Common Objects
- Setting Up the Environment
 - To Set Up Permissions
 - Running the Installation Script
 - To Run the Installation Script
 - To Verify the Environment Variables
- Setting Up ISI.INI File Sections
 - To Set Up Form Exits
 - To Set Up Docucreate Font Control

Technical Details

- Introduction
 - ISICPY / DC2CPY**
 - Setting Up ISICPY (Windows & UNIX)
 - Using ISICPY (Windows & UNIX)
 - To Use ISICPY
 - Presenting Documents with Overlays and Watermarks
 - Setting Up Overlays
 - Using Overlays
 - PDLs & Supported File Types
-

CPYRULE
ExecISICPY
DC2PDF.INI File Sample
CPYRULE
ExecISICPY
DC2PDF.INI File Sample

Chapter 1

Introduction

ABOUT THIS GUIDE

This guide provides the information you need to install and use the Documaker Common Objects, which are tools for performing most of the tasks shared by the Docuflex family of products.

Here is a list of the manuals that you might need to refer to when you use the Common Objects.

- *Documaker fp Server (Windows)*, version 5.1.1
- *Documaker ws*, version 5.0
- *Oracle Control Panel*, version 5.2.11
- *Oracle Printcommander*, version 6.0.19
- *Rulecommander*, version 5.0
- *Tagcommander*, version 6.3.1.14
- *Docuflex*, version 10.2 or 11.x
- *Transall*, version 10.2 or 11.x

Note Please note that the images or screenshots that follow in the upcoming explanation of the topics may not resemble those as encountered in the actual installation, un-installation or other related functions performed on the application.

WHAT ARE THE COMMON OBJECTS?

Oracle uses Common Object **dlls** (Dynamic Load Libraries for Windows) and **sos** (shared objects for UNIX) with Oracle products to perform many common tasks, including these:

- Program testing
- File I/O
- Font management
- Print datastream generation
- .INI File management
- Job management

Oracle offers two versions of the Common Objects, the building blocks of all Docuflex-related applications:

- **Version 1** is necessary for such applications as Docuflex 10.2.x, all releases of Documaker fp, Control Panel, Printcommander for Windows, Rulecommander, Tagcommander 1.x, and Documaker ws.
- **Version 2** applies to applications such as Docuflex 11.x, Transall 11.x, and Tagcommander's Docuflex Tag Manager.

Note Version 1 Common Object files begin with either *isi* or *dfx*, while Version 2 files begin with *dc2* (e.g., *isibrokr.w32* vs. *dc2brokr.w32*).

- **Documaker fp**—manages the batch merging, assembly, and printing of complex documents that consist of both variable data and fixed-text forms.
- **Documaker ws**—displays, assembles, edits, and manages form-based documents that have fixed-text and variable data.
- **Control Panel**—a centralized hub that coordinates the operation and configuration of most Oracle products.
- **Printcommander**—functions as a *printer driver* to format documents so that you can print them using the major types of large volume high-speed laser printers, such as IBM AFP and Xerox Metacode.
- **Rulecommander**—a Microsoft Windows-based database manipulation tool designed to work with Documaker fp.
- **Tagcommander**—creates, manages, and inserts BPSD and DGSD tags which represent placeholder characters (“replacement characters”) that are later replaced with variable data when a document is processed.
- **Docuflex Tag Manager**—manages and inserts Docuflex Tags, temporary placeholders that derive their contents from Reserved Tags, Schema fields, or business Rules within a Docuflex Studio data project.
- **Docuflex**—provides unparalleled ability to design complex, personalized, individualized documents, to accept transaction and other input data from a wide variety of sources to personalize these documents, and to create final documents in a wide variety of printer and electronic formats ready for distribution.

-
- **Transall**—an Extract Translate Load (ETL) tool for creating software objects, called **Transall Applications**, that allow the information found in dissimilar systems to work together in a new application.
 - The tables on the following pages describe the current set of Windows and UNIX files. Most of the 32-bit **dlls** use a file extension of **.w32**, while the rest use **.dll**.

Version 1 Common Objects

File Name	32-bit Windows Extension	UNIX Extension	Use
isi_ms65	.w32		Microsoft SQL Server 6.5 database support
isiafp	.w32	.so	AFP Printstream PDL
isiany55	.w32		Sybase SQLAnywhere 5.5 database support
isibrokr	.w32	.so	Broker Objects
isichanl	.w32		Document I/O PDL management
isicodef	.w32	.so	CODEDEF object
isicom	.w32	.so	Common trace, error and logging
isictls	.w32	.so	Job control management
isidb_32	.dll		32-Bit database client software support
isidb221	.w32		DB\2 2.1 database support
isidbflt	.w32	.so	Flat file EDL support
isidcd	.w32	.so	Oracle persistent objects PDL
isidocs	.w32	.so	Document Objects
isifile	.w32	.so	File I/O and miscellaneous file blocking
isifonts	.w32	.so	Font management
isifrmgr	.w32	.so	EDL member management
isihdc	.w32		Windows print driver HDC output PDL
isiini	.w32	.so	INI file manager for reading .ini entries
isimae	.w32	.so	Merge and assembly management
isimeta	.w32	.so	Metacode Print Stream PDL
isiosys	.w32	.so	Output System management
isipcl	.w32		Native printer control language PDL
isiqueue	.w32	.so	TCP/IP and Local Disk queue management
isirtf	.w32	.so	Rich Text Format support
isistats	.w32	.so	Processing statistics.
isitags	.w32	.so	Tag Data storage object
isivlam	.w32	.so	pcVLAM interface

File Name	32-bit Windows Extension	UNIX Extension	Use
isivlmif	.dll		32-Bit pcVLAM interface
pcvlam_c	.dll		32-Bit pcVLAM internal 'C' callable interface
vlamuser	.w32		pcVLAM interface functions

Version 2 Common Objects

File Name	Windows Extension	UNIX Extension	Use
dc2afp	.w32	.so	Advanced Function Presentation (AFP) printstream PDL
dc2bmp	.w32	.so	Windows bitmap (BMP) PDL
dc2brokr	.w32	.so	Broker object
dc2chanl	.w32	.so	Document I/O PDL management
dc2chrt	.w32	.so	Graphics charting module
dc2codf	.w32	.so	CODEDEF object
dc2com	.w32	.so	Common trace, error, and logging
dc2comp	.w32	.so	Compression module
dc2cpy	.w32	.so	File I/O control
dc2dbkey	.w32	.so	Database key support
dc2dbpth	.w32	.so	Database path module
dc2dcd	.w32	.so	Oracle persistent objects PDL
dc2docs	.w32	.so	Document objects
dc2dwp	.w32	.so	Oracle Work-In-Process (DWP) PDL
dc2emf	.w32	.so	Enhanced Metafile (EMF) PDL
dc2envm	.w32	.so	File pathing portability module
dc2eps	.w32	.so	Encapsulated PostScript (EPS) PDL
dc2file	.w32	.so	File I/O functions
dc2fonts	.w32	.so	Device font management
dc2frmgr	.w32	.so	Forms management
dc2gfx	.w32	.so	Graphics support
dc2hdc	.w32	.so	Windows print driver (HDC) output PDL
dc2hitag	.w32	.so	Tag support
dc2html	.w32	.so	Hypertext Markup Language (HTML) PDL
dc2ini	.w32	.so	INI file manager for reading <i>.ini</i> entries
dc2jpeg	.w32	.so	JPEG PDL
dc2meta	.w32	.so	Metacode printstream PDL
dc2mexit	.w32	.so	User exit module

File Name	Windows Extension	UNIX Extension	Use
dc2mfb	.w32	.so	Enhanced Metafile BLOB PDL
dc2pcl	.w32	.so	Native Printer Control Language (PCL) PDL
dc2pdf	.w32		Adobe PDF PDL (output only)
dc2pdfi	.w32		Adobe PDF PDL (input/output)
dc2png	.w32	.so	PNG PDL
dc2ps	.w32	.so	PostScript PDL
dc2wpnt	.w32		Microsoft Office PowerPoint PDL (Version 11.1 only)
dc2queue	.w32	.so	TCP/IP and Local Disk queue management
dc2rtf	.w32	.so	Rich Text Format (RTF) PDL
dc2stats	.w32	.so	Processing statistics
dc2tags	.w32	.so	Tag data storage object
dc2text	.w32	.so	Text PDL
dc2tfont	.w32	.so	Font management (TTF/OTF/Type1)
dc2tiff	.w32	.so	TIFF PDL
dc2util	.w32	.so	General utility routine
dc2utilw	.w32	.so	General Windows utility routine
dc2web	.w32	.so	Thin Client Entry module
dc2xml	.w32	.so	Extensible Markup Language (XML) PDL
dc2zip	.w32	.so	Compression module
dcdapi	.w32	.so	Oracle Compound Document (DCD) API
dmrpt	.w32	.so	Reporting module
dc2cpy32	.exe		PDL I/O control module
dc2fctrl	.exe		Font control module (TTF/OTF/Type1)
dc2vers	.exe		Manages differing versions of DCD
pdflib	.dll		Enables PDF input and output for composition
pdlapi	.w32		Allows search and retrieval within a print datastream
pdlpic	.w32		"C" callable interface to the PDL API
vgflow	.dll		Enables PDF viewing in Docuflex Studio
vgpsflow	.dll		Enables PDF viewing in Docuflex Studio

Unicode Support for Specific Data Types

All Docuflex input and output file types and PDL (Print Device Language) drivers are affected by the addition of Unicode support to Docuflex and Transall. This table summarizes how Unicode affects each PDL and file type.

PDL	Description
HDC	The HDC (Handle Device Context - for any Windows print driver) PDL leverages Windows' support for Unicode to deliver the full Unicode output capabilities of Windows printer drivers from 3rd party vendors. This PDL is also used for producing the preview display in the Docuflex Studio GUI.
AFP	The AFP (Advanced Function Printing) PDL now down-converts Unicode text data to EBCDIC for transmission in the AFP output. In the future we may add support for some of the new InfoPrint features that have been added to AFP. Some of these features make using Unicode with TrueType fonts possible via AFP and updated AFP printer hardware.
Metacode	The Xerox Metacode PDL now down-converts Unicode text data to ASCII for transmission in the Metacode output.
RTF	The RTF (Rich Format Text) PDL leverages RTF's native support for Unicode to imbed full fidelity Unicode content in RTF output. The RTF PDL also ingests Unicode content in RTF input.
PDF(L)	The PDF(L) (Portable Document Format) PDL leverages PDF's native support for Unicode to imbed full fidelity Unicode content in PDF output. All text aspects of a standard PDF document are capable of representation in Unicode. These text aspects include the standard content, bookmarks, hyperlinks, and so on. Support is also included for loading content files and fonts with Unicode encoded file names. The legacy PDF PDL can now down-convert Unicode text data to ASCII for transmission in the PDL output.
PCL	The PCL (Printer Control Language) PDL now down-converts Unicode text data to ASCII for transmission in the PCL output. Note: On Windows, the HDC PDL can produce PCL via 3rd party drivers that support Unicode for PCL. In the future this PDL may be enhanced to provide a level of Unicode support for PCL both on and off the Windows platform.
HTML	The HTML (HyperText Markup Language) PDL leveraged HTML's native support for Unicode to imbed full fidelity Unicode content in HTML output.
XML	The XML (eXtensible Markup Language) PDL leverages XML's native support for Unicode to imbed full fidelity Unicode content in XML output.
EMF	The EMF (Enhanced MetaFile) PDL leverages EMF's native support for Unicode to imbed full fidelity Unicode content in EMF output.
BMP/TIFF/JPEG/PNG	The BMP (Bitmap), TIFF (Tagged Image File Format), JPEG (Joint Photographic Experts Group), and PNG (Portable Network Graphics) image PDLs are not affected by Unicode. If an image file contains a graphic representing a rendered Unicode script, it will still be processed just like any other graphic image.
PPT	The PowerPoint PDL leverages PowerPoint's native support for Unicode to imbed full fidelity Unicode content in PowerPoint output.

PDL	Description
WEB	The thin entry client can now use the native Unicode support provided by modern web browsers. Internet Explorer has built-in support for Unicode encoded pages. The WEB PDL can generate full-fidelity Unicode within a thin client environment.

Editing Configuration Files with Unicode

Use the DPAD file editing tool, included in version 11.3, to place hand-edited text into configuration files used by Docuflex and Transall, such as the INI and DDE files. DPAD displays and edits text in UCS2 mode, which lets you directly enter Unicode text, but saves the files in UTS-6 format for use by Docuflex or Transall.

In most cases you can update these files with Unicode values using the Docuflex GUI tools such as the Environment Manager. You only have to use DPAD to update these files if Unicode values need to be placed in them in ways that are unsupported by the GUI tools in Docuflex. If only standard ANSI (Windows 1252) data is in the files, then you can use any editor, such as Windows Notepad, to update the files outside of Docuflex.

To type Unicode character values into DPAD, or any of the GUI elements of Docuflex and Transall, you must enable Windows International support. This support includes a Windows feature called the Input Method Manager. This manager lets you remap the keys on a standard Windows keyboard for a particular locale. The remapping setup for a particular locale is called an Input Method Editor (IME) and it allows Unicode characters to be typed directly into all internationalized applications such as Docuflex and Transall from a standard Windows keyboard.

Chapter 2

Microsoft Windows

SYSTEM REQUIREMENTS

IMPORTANT! Do not install Common Objects on a removable drive.

Hardware Requirements

Here are the minimum hardware requirements to install Common Objects:

Processor: Intel-compatible; 512 MHz or faster Pentium III or better processor required, or equivalent

Memory: 512 MB available RAM or more recommended

Hard disk: 30 MB of available hard disk space required for installation (hard disk usage will vary based on configuration)

Software Requirements

Common Objects for Microsoft Windows install as a set of Dynamic Link Libraries (DLLs).

You must install Common Objects before you can use the following Oracle products:

Documerge, version 1.1.x for Windows

Docuword Editor, version 1.1.x and Composition Engine for Windows

Docusolve, version 1.3.x for Windows

Common Objects must also be installed before you can use Documerge 3.0 for Windows and the associated Docuword Composition Engine or Docuflex Studio.

Common Objects must also be installed before you can use Printcommander .

DOWNLOADING THE SOFTWARE

Common Objects is available for download at the Oracle Software Delivery Cloud web site.

The process of downloading software from OSDC includes following steps:

1. First, go to Oracle Software Delivery Cloud website.
<http://edelivery.oracle.com/>
2. Sign in with your Oracle account. If you do not have an Oracle account, you can register for an account [here](#).
3. Search for the software by typing in the search bar and selecting it. For example enter 6.1.1.0.0 to search for the Oracle Documaker Docucreate products.

4. Select the platform from the 'Select platform' drop-down.
5. The selected products are then listed under 'Download Queue'. Click the X (cross) which is adjacent to the product in case you want to remove individual files or click 'Remove All' in the lower left corner of the dialog if you want to remove all the listed items.
6. Click 'Continue' to proceed to next screen; you will see a list of the selected software for downloading.
7. Choose the individual software components for download and click 'Continue' if you wish to proceed or 'Return to Search' to review different software for downloading.
8. Read the license agreement carefully; mark the check box to agree with license agreements, and click 'Continue'.
9. Click 'Download' button to download the software or click the filename to individually download the files.
10. While you can save the file on any machine you choose, we recommend you save the file onto the machine where you plan to run it. You must unzip the file on the platform for which it was intended. The length of time it takes to download an application depends on the size of the download, your connection speed, and the amount of traffic on the site.
11. Once the Download has completed, click 'Return to Search' to search and download additional files or click 'Sign Out' to log off Oracle Software Delivery Cloud.

INSTALLING THE COMMON OBJECTS

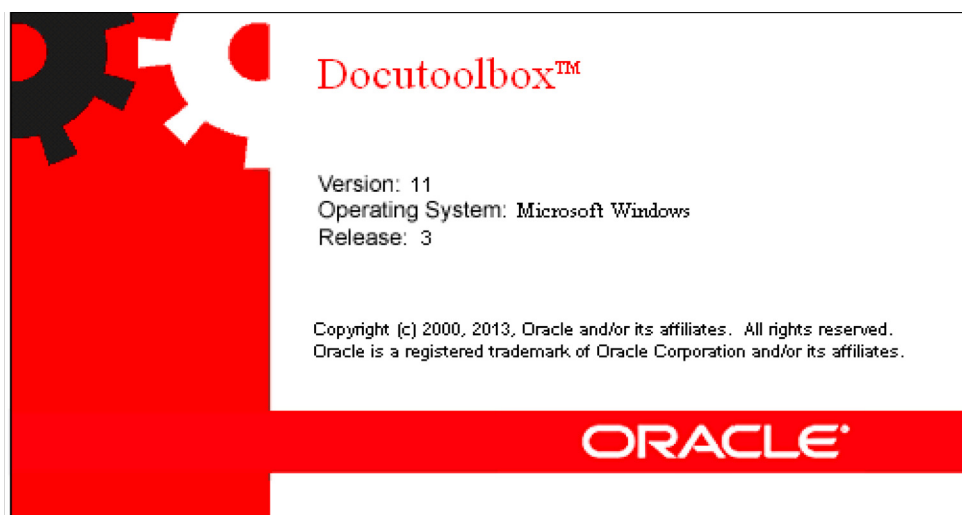
The procedure for installing Common Objects is identical that for many other Windows applications. Simply follow the instructions that appear on your screen to complete the task successfully.

IMPORTANT We strongly recommend that you run the installer from your local hard drive.

To Install Common Objects:

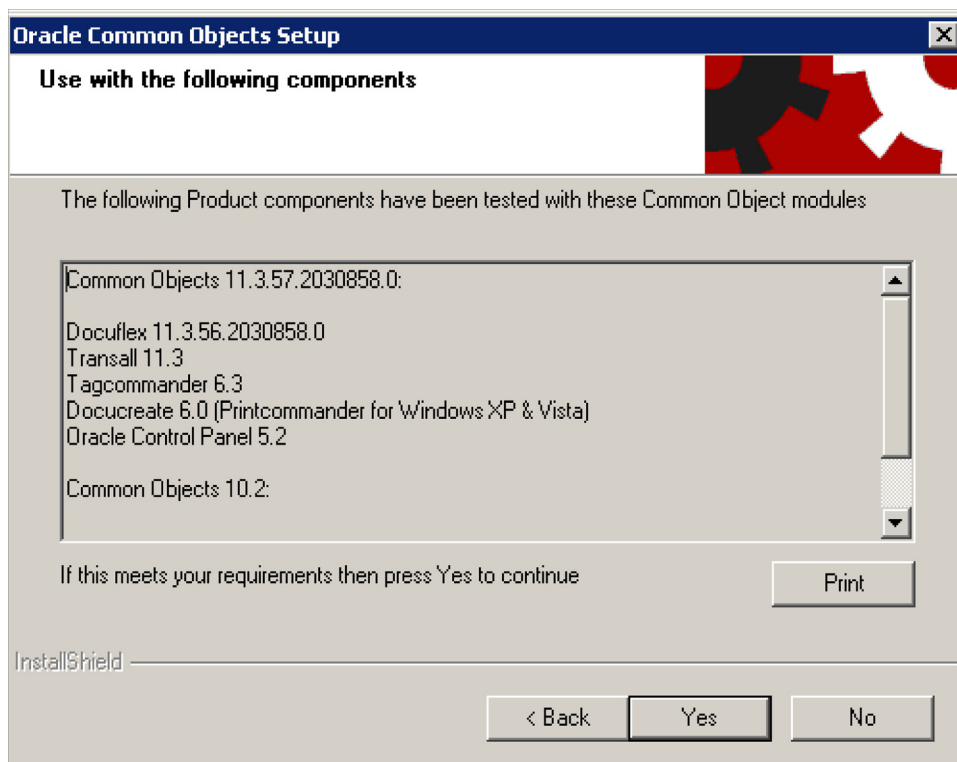
From the directory into which you downloaded the media pack, unzip the media pack. Click on the setup.exe located in the Common Objects' Disk1 directory. This starts the installation process.

The installation routine indicates the InstallShield Wizard's progress, followed by the Welcome window.



Click **Next** to continue or **Cancel** to quit.

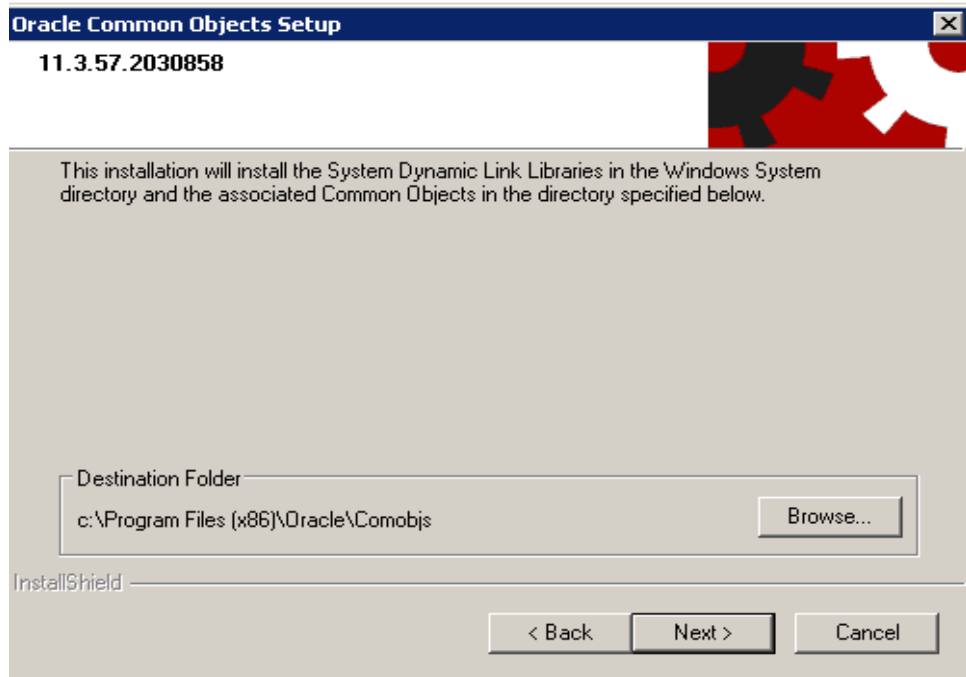
The installation routine displays the Compatibility Verification window. This window lists the product components which have been tested with the Common Object modules you are installing. You can print this list if you like by clicking **Print**.



Click **Yes** to proceed with the installation or **No** to quit.

The Choose Destination Location window appears so you can specify the folder name/directory path into which you want to install the program.

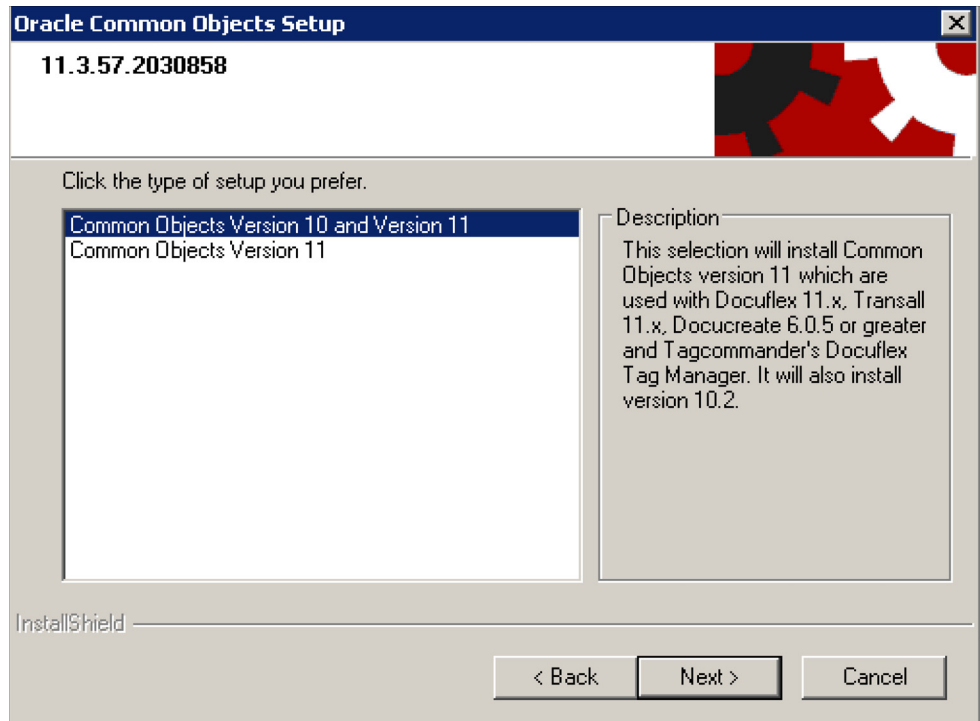
Choose one of these options:



To	Perform this action
Accept the default path	Click Next .
Enter another path for the installation	Click Browse , select a new path, and then click Next . The Destination Folder lists the last location to which the program was installed. If you are re-installing the program to a different location, you should Cancel the routine, un-install the program from its previous location, and then install the program to the desired location.

Click **Next** to continue the installation. You can also click **Back** to return to the previous screen or **Cancel** to quit.

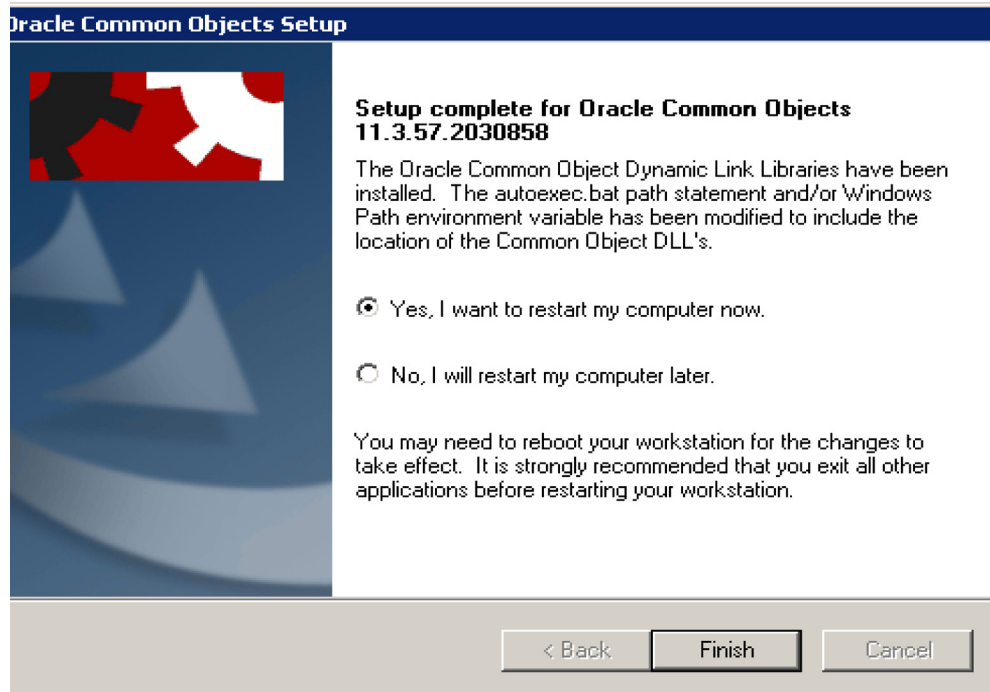
The Setup Type window appears to let you choose the type of setup you want to install.



Choose the setup you prefer and then click **Next**.

A progress window shows the installation routine's progress as it installs the files onto your computer.

When the installation is complete, the Common Objects Setup Complete window appears.



Choose from these options:

To	Do this
Restart your computer now	Click Finish .
Restart your computer later	<ol style="list-style-type: none"> 1. Select No, I will restart my computer later option. 2. Click Finish.

The Common Objects have been successfully installed on your system. See the readme.html file for any late-breaking product information.

```
[Form Exits]
;TRACE_FILE=F:\dwtest.trc
;TRACE_ENABLED=1
```

Chapter 3

UNIX

SYSTEM REQUIREMENTS

Common Objects for UNIX install as a set of .so (shared object) files.

LINUX (32-BIT)

The minimum hardware requirements to install Common Objects are:

- Processor: Intel-compatible only; 1 GHz or faster Pentium Pro or better processor required
- Memory: 512 MB available RAM or more recommended
- Hard disk: 30 MB of available hard disk space required for installation (hard disk usage will vary based on configuration)

The minimum software requirements to install Common Objects are:

- Kernel 2.4.9 or later; formal Linux distribution is desirable (e.g., Red Hat Enterprise Linux or Novell SuSE Linux Enterprise Server); all current fixes are required for each kernel release.
- Databases supported:
 - Oracle 9 and later supported via Oracle 9 driver
- Linux 2.4.9 or later with the following libraries:
 - libdl.so.2
 - libm.so.6
 - libc.so.6
 - /lib/ld-linux.so.2
 - libstdc++-libc6.2-2.so.3

INSTALLING THE COMMON OBJECTS

Copy the appropriate files from the installation disc to a directory to which all users of the product have access:

If you're on this platform:	Copy these files:
Linux	setupfix112.lnx setupcom112.lnx setuptrn112.lnx

Example If you want to install the product into the `/home/Oracle/comobjs` directory, first create the directory and then copy the files into it. You should perform this operation with root authority so that file permissions can be set for users and groups, but using root authority isn't absolutely necessary.

SETTING UP THE ENVIRONMENT

Setting up Common Objects on UNIX is a multiple-step process involving

- setting up access permissions for directories and users (see To Set Up Permissions)
- running the installation script (see To Run the Installation Script)
- verifying the environment variables (see To Verify the Environment Variables)

To Set Up Permissions

1. Ensure that you're logged on with the proper authority for the directory and installation files. You might need to assign user and group permissions.
 - a. Verify that the directory in which you're about to run the setup script has write permission. If the permission isn't set correctly, do so now.

EXAMPLE

If user `jxsmith` created the `/home/oracle/comobjs` directory, use that ID to run the setup script. Verify that `/home/oracle/comobjs` has write permission using the "ls" command:

```
ls -ald /home/oracle/comobjs
```

You should see the following results:

```
drwxr-xr-x 2 jxsmith staff 512 Apr 19 07:52 /home/oracle/comobjs
```

The most important part of this message is the third letter of the string "drwxr-xr-x". The "w" indicates that the owner of this directory has write permission. If the third letter isn't a "w", assign write permission with the following command:

```
chmod 755 /home/oracle/comobjs
```

- b. Make sure you're in the directory containing the installation files:

```
cd /home/oracle/comobjs
```

- c. Change the file permission for the three installation files.

- the files should have read permission (read/write for the user, if desired):

```
chmod 644 setupflx112.lnx
chmod 644 setupcom112.lnx (ditto)
chmod 644 setuptrn112.lnx (ditto)
```

- Adjust the file permission of the installed files for the various users and groups needing access.

RUNNING THE INSTALLATION SCRIPT

The Docuflex 11.3, Common Objects 11.3, and Transall 11.3 installations on the Unix platforms (Linux) have been enhanced to use the Unix *uuencoded text* encoding method instead of the *tar* files, which will no longer be provided. The new *uuencoded* files are text-based files instead of binary *tar* files. This should make the transmission and distribution of these installation files easier and more portable to different machines in your network.

You can perform either a new installation or update an existing one. The installation process detects whether you are updating an existing installation when you enter the directory name of the target or destination of the installation. If the directory does not exist, then a new install is performed.

If the directory already exists and a predefined required binary file is found in the existing directory, then an “update” to an existing installation is performed. Both these conditions must be true. The predefined required binary file for Docuflex is “dflxux”, for Common Objects, “dc2cpy”, and for Transall, “tranexe”. The installation update process will ask if you first want to “back up” the existing installation. If you choose “back up”, all the existing files in the target directory will be copied to a subdirectory called “backup”. Since this is an installation update, only the new binary files will be copied/installed to your target/destination directory, preserving any existing data files you may already have in that directory (e.g., .ini files and .dde files).

To Run the Installation Script

- Run the installation script you want to install.

The naming convention for these scripts is as follows:

setupPPPvvv.r.sss

where:

PPP	the three-letter product acronym	
	flx	Docuflex
	com	Common Objects
	trn	Transall
vvv	the version number	
r	the revision number	
sss	the Unix platform system	
	lnx	Linux

Therefore, if you were installing Common Objects 11.3 on the Linux operating system, the script name will be “setupcom11.3.lnx”.

Following is an example of running the Docuflex installation on the Linux operating system and its display and response. In this example, we will install Docuflex, Common Objects, and Transall all into the same directory named “docuflex11.n”.

Note The Docuflex script will automatically invoke the Common Objects and Transall installation scripts. You can choose to install or bypass the installation of any one of these components.

```
>setupflx11.3.lnx                <= At your ready prompt, enter the installation script name.

* * * Docuflex 11.n Installation/Update * * *
Loading, Please Wait ...

Do you want to Install Docuflex 11.n?
Enter 'Y'es or 'N'o, or 'X' to cancel this process.
?>y                                <= Enter 'y' to install this component.
                                    Enter 'n' to bypass the installation of this component
                                    and continue with the next component.
                                    Enter 'x' to cancel all of this installation process.

Please select an Installation/Update Directory:
Press <Enter> to accept default: </home/acctflename/flx11.n>
?>docuflex11.n                    <= Enter the directory name where you want to install.
                                    This is a qualified or non-qualified directory name. In this
                                    example, a sub-directory named "docuflex11.n" will be created
                                    at the existing/current directory.

Install Docuflex 11.n to <docuflex11.n>?
{y or n}?>y                        <= Enter 'y' to continue this installation.

Installation/Update in progress. Please wait...
Updated Base Components ...

...

* * * Common Object 11.n Installation/Update * * *
Loading, Please Wait ...

Do you want to Install Common Objects 11.n?
Enter 'Y'es or 'N'o, or 'X' to cancel this process.
?>y                                <= Enter 'y' to install this component.
                                    Enter 'n' to bypass the installation of this component
                                    and continue with the next component.
                                    Enter 'x' to cancel all of this installation process.
```

```

Please select an Installation/Update Directory:
Press <Enter> to accept default: </home/acctname/com11.n>
?>docuflex11.n          <= Enter the directory name where you want to install.
                          This is a qualified or non-qualified directory name. In this
                          example, a sub-directory named "docuflex11.n" will be created
                          at the existing/current directory.

Install Common Object 11.n to <docuflex11.n>?
{y or n}?>y            <= Enter 'y' to continue this installation.

Installation/Upate in progress. Please wait...
Updated Base Components ...

...

Common Object Installation Complete.

* * * Transall 11.n Installation/Update * * *
Loading, Please Wait ...

Do you want to Install Transall 11.n?
Enter 'Y'es or 'N'o, or 'X' to cancel this process.
?>y                    <= Enter 'y' to install this component.
                          Enter 'n' to bypass the installation of this component
                          and continue with the next component.
                          Enter 'x' to cancel all of this installation process.

Please select an Installation/Update Directory:
Press <Enter> to accept default: </home/acctname/trn11.n>
?>docuflex11.n          <= Enter the directory name where you want to install.
                          This is a qualified or non-qualified directory name. In this
                          example, a sub-directory named "docuflex11.n" will be created
                          at the existing/current directory.

Install Transall 11.n to <docuflex11.n>
{y or n}?>y            <= Enter 'y' to continue this installation.

Installation/Update in progress. Please wait...
Updated Base Components ...

...

Transall Installation Complete.

Docuflex Installation Complete.

>                        <= You are back at your ready prompt.

```

In the following example, we will update an existing Docuflex installation on the Linux operating system. We already have Docuflex, Common Objects and Transall installed into the same directory named "docuflex11.n".

Note The Docuflex script will automatically invoke the Common Objects and Transall installation scripts. You can choose to install or bypass the installation of any of these components.

```

>setupflx11.3.lnx                                     <= At your ready prompt, enter the installation script name.

* * * Docuflex 11.n Installation/Update * * *
Loading, Please Wait ...

Do you want to Install Docuflex 11.n?
Enter 'Y'es or 'N'o, or 'X' to cancel this process.
?>y                                                  <= Enter 'y' to install this component.
                                                    Enter 'n' to bypass the installation of this component
                                                    and continue on with the next component.
                                                    Enter 'x' to cancel all of this installation process.

Please select an Installation/Update Directory:
Press <Enter> to accept default: </home/acctflename/flx11.n>
?>docuflex11.n                                       <= Enter the directory name where you want to install.
                                                    In this example, the directory name already exists and will
                                                    cause the installation process to update the existing installation.

Docuflex installation <docuflex11.n> already exists.

Please select an update type
1 = Backup and Update Installation
2 = Update Installation
3 = Quit
?>1                                                  <= Choose 1 to first back up your existing installation files
                                                    to a sub-directory named "backup", then new binary files
                                                    modules will be installed.

Update Docuflex 11.n to <docuflex11.n>
{y or n}?>y                                         <= Enter 'y' to continue this update installation.

Preserving docuflex.dde.sample file...
Installation/Update in progress. Please wait...
Updated Base Components...

* * Common Object 11.n Installation/Update * * *
Loading, Please Wait ...

Do you want to Install Common Objects 11.n?
Enter 'Y'es or 'N'o, or 'X' to cancel this process.
?>y                                                  <= Enter 'y' to install this component.
                                                    Enter 'n' to bypass the installation of this component
                                                    and continue with the next component.
                                                    Enter 'x' to cancel all of this installation process.

Please select an Installation/Update Directory:
Press <Enter> to accept default: </home/acctname/com11.n>
?>docuflex11.n

Common Object installation <docuflex11.n> already exists.

Please select an update type
1 = Backup and Update Installation
2 = Update Installation
3 = Quit
?>1                                                  <= Choose 1 to first back up your existing installation files
                                                    to a sub-directory named "backup", then new binary files
                                                    modules will be installed.

```

```

Update Common Object 11.n to <docuflex11.n>?
{y or n}?>y                               <= Enter 'y' to continue this update installation.

Preserving isi.ini.sample file...
Installation/Update in progress. Please wait...
Updated Base Components ...

Common Object Installation Complete.

* * * Transall 11.n Installation/Update * * *
Loading, Please Wait ...

Do you want to Install Transall 11.n?
Enter 'Y'es or 'N'o, or 'X' to cancel this process.
?>y                                         <= Enter 'y' to install this component.
                                           Enter 'n' to bypass the installation of this component
                                           and continue with the next component.
                                           Enter 'x' to cancel all of this installation process.

Please select an Installation/Update Directory:
Press <Enter> to accept default: </home/acctname/trn11.n>
?>docuflex11.n

Transall installation <docuflex11.n> already exists.

Please select an update type
1 = Backup and Update Installation
2 = Update Installation
3 = Quit
?>1                                         <= Choose 1 to first back up your existing installation files
                                           to a sub-directory named "backup", then new binary files
                                           modules will be installed.

Update Transall 11.n to <docuflex11.n>?
{y or n}?>y                               <= Enter 'y' to continue this update installation.

Installation/Update in progress. Please wait...
Updated Base Components ...

...

Transall Installation Complete.

Docuflex Installation Complete.

>                                           <= You are back at your ready prompt.

```

To Verify the Environment Variables

Note In the following two steps, LD_LIBRARY_PATH is the name of the environment variable on Linux.

1. All Common Objects users must add the library directory to their LD_LIBRARY_PATH environment variable. Edit the login profile and modify the environment variable so that the operating system can find the shared object (.so) files that Common Objects uses.

```
LP=/home/oracle/comobjs
LD_LIBRARY_PATH=$LD_LIBRARY_PATH:$LP
export LD_LIBRARY_PATH
```

2. Be sure to refresh the LD_LIBRARY_PATH environment variable by executing the login profile before trying to use Common Objects (e.g., first logout and then log back in). To verify that the environment variable has been updated correctly, type:

```
echo $LD_LIBRARY_PATH
```

you should see something similar to the following:

```

┌── /usr/lib:/usr/bin/lib:/home/oracle/comobjs
└── $
```

SETTING UP ISI.INI FILE SECTIONS

This topic provides descriptions of the *isi.ini* file sections that are required to run Common Objects on UNIX platforms.

WARNING! UNIX file names, such as *isi.ini*, are *case-sensitive* (i.e., you must type uppercase and lowercase characters exactly as they are represented). In the following listings, values in *bold* are site-specific and are *not* case-sensitive; however, section labels enclosed in square brackets *are* case-sensitive). Avoid using the em dash (—) or dollar sign (\$) characters in file names, as they cause the UNIX reader to truncate file names.

If the defaults won't work for your environment, use the following instructions to change any bold site-specific keyname values to values that will work.

To Set Up Form Exits

The Form Exits section provides tracing/debugging options and trace and log file names. For example, TRACE_ENABLED=1 turns tracing on and informs the FormExit that tracing is desired. To enable this tracing mechanism, remove the semi-colon comment character in front of each line where:

Note You should not enable the tracing feature in normal production runs.

Parameter	Meaning
; TRACE_FILE=	Path and file name for trace file
; TRACE_ENABLED=	Switch to enable tracing: 0 Don't trace 1 Trace

To Set Up Docucreate Font Control

Docucreate Font Control is a utility that controls and maintains a font database for various Oracle product components. The font database contains information about the fonts that are installed or otherwise available to the Operating System, as well as to applications installed on the target OS. This utility is delivered with Common Objects.

In Windows, the utility is installed in the **Programs>Startup** folder. When you boot your system, the utility invokes automatically and

- creates and, if necessary, updates the *dfxfctrl.fdb* binary font database file
- creates a file called *dfxfctrl.ssf*, a readable text version of the binary font database

In a Unix environment, you need to run the utility when you add fonts to or remove fonts from the system.

Note The font database files are *not* transferable between operating systems; *dfxfctrl.fdb* and *dfxfctrl.ssf* files must be created by the Docucreate Font Control utility designed and delivered for the target OS.

```
[DFXFONT]
; location of psnames.psf (Type1: windows
fontname to
; Postscript fontname and file name dbase)
PSFPath=/home/fonts/fdb
; location of psnames.pst (text version of
psnames.psf)
PSTPath=/home/fonts/fdb
; location of dfxfctrl.ssf and dfxfctrl.fdb
FDBPath=/home/fonts/fdb
; locations of font files
TTFDirs=3
TTFD01=/home/fonts/ttf
TTFD02=/home/testfonts
TTFD03=/usr/oracle/fonts/ttf
TY1Dirs=1
TY1D01=/home/fonts/psfonts
```

The bold values will vary between installations. The number specified for TrueType (TTFDirs) and Type 1 (TY1Dirs) font directories determines the number of entries that must be listed in each section.

The format of the “TTFD nn ” and “TY1D nn ” keys is significant. The nn value must have a leading zero for values less than 10. Support is provided only up to a value of ‘99’, dependent on the values specified in the “TTFDirs” and “TY1Dirs” entries.

If there are no Type 1 fonts, this key/value pair must be listed in the section:

```
TY1Dirs=0
```

```
[Form Exits]
;TRACE_FILE=F./dwtest.trc
;TRACE_ENABLED=1$
```


Chapter 4

Technical Details

INTRODUCTION

While most of the Common Objects are transparent to you from an operational standpoint, several of them require some level of interaction on your part. Refer to the following list for an explanation of the Common Objects and the actions required to use them efficiently in operating Oracle products:

- Setting Up ISICPY (Windows & UNIX)
- Using ISICPY (Windows & UNIX)
- CPYRULE
- PDLs & Supported File Types
- Common Objects Database Compatibility
- Securing a Database Connection (Windows & Linux)

ISICPY / DC2CPY

ISICPY is an input/output processor that converts a source input datastream, such as RTF or DCD, to a target output datastream, such as AFP or Metacode. You specify the input and output datastreams to ISICPY via the initialization (*ISICPY.INI*) file.

There are two versions of ISICPY depending on your version of Common Objects—**ISICPY** is applicable to Version 1, while **DC2CPY** is applicable to Version 2. For more information, see .

Note For the purposes of discussion, this guide uses the term “ISICPY” generically.

ISICPY is available on multiple platforms, and the name of the program varies accordingly. Use the following table to determine the name applicable to your platform:

Platform	Version 1 Common Objects	Version 2 Common Objects
Windows	ISICPY32	DC2CPY32
UNIX	ISICPY	DC2CPY

SETTING UP ISICPY (WINDOWS & UNIX)

The *ISICPY.INI* file provides specifications for performing print datastream translation processing. The following sample provides syntax for both Windows and UNIX.

```
[ISICpy]
; =====
; ===== General Options =====
; =====
ERROR_CLEAR=1
ERROR_FILE=C:\Oracle\Printers\Out\cpy.err
;ERROR_FILE=/Oracle/Printers/Out/cpy.err
;UNIX syntax
LOG_CLEAR=1
LOG_FILE=C:\Oracle\Printers\Out\cpy.log
;LOG_FILE=/Oracle/Printers/Out/cpy.log
;UNIX syntax
TRACE_CLEAR=1
TRACE_FILE=C:\Oracle\Printers\Out\cpy.trc
;TRACE_FILE=/Oracle/Printers/Out/cpy.trc
;UNIX syntax
TRACE_REPS=1000
TRACE_ENABLED=0
TRACE_OPPDL=0
TRACE_IPPDL=0
TRACE_FONTS=0
SNAP_DOC=0
TRACE_DOC=0
TRACE_DOC_FORMAT=0
PDL_INI=C:\Oracle\Printers\isi.ini
;PDL_INI=/Oracle/Printers/isi.ini
;UNIX syntax
FONT_INI=C:\Oracle\Printers\isi.ini
;FONT_INI=/Oracle/Printers/isi.ini
;UNIX syntax
PRINTDEF_INI=C:\Oracle\Printers\isi.ini
;PRINTDEF_INI=/Oracle/Printers/isi.ini
;UNIX syntax
;; =====
CHANNELS=2
CHANNEL_00=DCD_IN
CHANNEL_01=META_OUT
; =====
; ===== Document Options =====
; =====
DOC_NAME=DocuCopy
; =====
; === New Document Options:
; ===   Format Enable: ( 0=NONE, 1=FORMAT ) DEF: 1
; ===   Tumble Enable: ( 0=NONE, 1=ODD, 2=EVEN, 3=BOTH )
DEF: 0
; ===   Substitute Type: ( 0=NONE, 10=BPSD, 11=VSD, 29-
DGSD ) DEF: 11
; =====
OPTIMIZE_ENABLE=0
FORMAT_ENABLE=0
TUMBLE_ENABLE=0
SUBSTITUTE=0

;
=====
=
```

```

; ===== Input CHANNEL Options
=====
;
=====
=
[AFP240_IN]
; ===== AFP =====
TRACE_ENABLED=1
OUTPUT=0
FILE_NAME=C:\Oracle\Printers\AFP\240\gs-goca.afp
;FILE_NAME=/Oracle/Printers/AFP/240/gs-goca.afp
;UNIX syntax
; 3 = IBM, 4 = ISI2B
FILE_TYPE=3
PDL=isiafp.dll
PRINTDEF=PrintDef - AFP
FONTSECT=AFP Printer,FILE:

[AFP300_IN]
; ===== AFP =====
TRACE_ENABLED=1
OUTPUT=0
FILE_NAME=C:\Oracle\Printers\AFP\300\gs-goca.afp
;FILE_NAME=/Oracle/Printers/AFP/300/gs-goca.afp
;UNIX syntax
; 3 = IBM, 4 = ISI2B
FILE_TYPE=3
PDL=isiafp.dll
PRINTDEF=PrintDef - IBM300
FONTSECT=AFP 300 Printer,FILE:

[BMP_IN]
; ===== BMP =====
TRACE_ENABLED=1
OUTPUT=0
FILE_NAME=C:\Oracle\Printers\BMP\CalxDollarIcon.bmp
;FILE_NAME=/Oracle/Printers/BMP/CalxDollarIcon.bmp
;UNIX syntax
FILE_TYPE=1
PDL=isibmp.dll
PRINTDEF=PrintDef - BMP
FONTSECT=Docuflex Text Format,FILE:

[JPG_IN]
; ===== JPG =====
TRACE_ENABLED=1
OUTPUT=0
FILE_NAME=C:\Oracle\Printers\JPG\CSU-WM-2.jpg
;FILE_NAME=/Oracle/Printers/JPG/CSU-WM-2.jpg
;UNIX syntax
FILE_TYPE=1
PDL=isijpeg.dll
PRINTDEF=PrintDef - BMP
FONTSECT=Docuflex Text Format,FILE:

[EMF_IN]
; ===== EMF =====
TRACE_ENABLED=0
OUTPUT=0
FILE_NAME=C:\Oracle\Printers\EMF\test.emf
;FILE_NAME=/Oracle/Printers/EMF/test.emf
;UNIX syntax
FILE_TYPE=1
PDL=isiemf.dll

```

```
PRINTDEF=PrintDef - BMP
FONTSECT=Docuflex Text Format,FILE:

[PNG_IN]
; ===== PNG =====
TRACE_ENABLED=1
OUTPUT=0
FILE_NAME=C:\Oracle\Printers\PNG\folder.png
;FILE_NAME=/Oracle/Printers/PNG/folder.png
;UNIX syntax
FILE_TYPE=1
PDL=isipng.dll

PRINTDEF=PrintDef - BMP
FONTSECT=Docuflex Text Format,FILE:

[TIFF_IN]
; ===== TIF =====
TRACE_ENABLED=1
OUTPUT=0
FILE_NAME=C:\Oracle\Docuflex\Projects\2page.tif
;FILE_NAME=/Oracle/Docuflex/Projects/2page.tif
;UNIX syntax
FILE_TYPE=1
PDL=isitiff.dll
PRINTDEF=PrintDef - BMP
FONTSECT=Docuflex Text Format,FILE:

[DCD_IN]
; ===== DCD =====
OUTPUT=0
TRACE_ENABLED=0
FILE_NAME=C:\Oracle\Printers\DCD\chart180.dcd
;FILE_NAME=/Oracle/Printers/DCD/chart180.dcd
;UNIX syntax
FILE_TYPE=2
PDL=isidcd.dll
PRINTDEF=PrintDef - DCD
FONTSECT=Docuflex Text Format,FILE:

[RTF_IN]
; ===== RTF =====
OUTPUT=0
TRACE_ENABLED=1
FILE_NAME=C:\Oracle\Printers\RTF\aTest02.rtf
;FILE_NAME=/Oracle/Printers/RTF/aTest02.rtf
;UNIX syntax
FILE_TYPE=1
PDL=isirtf.dll
PRINTDEF=PrintDef - RTF
FONTSECT=Docuflex Text Format,FILE:

[META_IN]
; ===== META =====
TRACE_ENABLED=0
OUTPUT=0
FILE_NAME=C:\Oracle\Printers\META\300\MixPort.met
;FILE_NAME=/Oracle/Printers/META/300/MixPort.met
;UNIX syntax
; 3 = IBM, 4 = 2BYTE
FILE_TYPE=3
PDL=isimeta.dll
PRINTDEF=PrintDef - META
FONTSECT=TestFonts
```

```

[TEXT_IN]
; ===== TEXT =====
OUTPUT=0
FILE_NAME=C:\Oracle\Printers\TEXT\xxx.txt
;FILE_NAME=/Oracle/Printers/TEXT/xxx.txt
;UNIX syntax
FILE_TYPE=2
PDL=isitext.dll
PRINTDEF=PrintDef - TEXT
TRACE_ENABLED=1
[PCL_OUT]
; ===== PCL =====
TRACE_ENABLED=0
OUTPUT=1
FILE_NAME=C:\Oracle\Printers\Out\cpy.pcl
;FILE_NAME=/Oracle/Printers/Out/cpy.pcl
;UNIX syntax
FILE_TYPE=1
PDL=isipcl.dll
PRINTDEF=PrintDef - PCL
FONTSECT=PCL Lib

[PDF_OUT]
; ===== PDF =====
TRACE_ENABLED=1
OUTPUT=1
FILE_NAME=C:\Oracle\Printers\Out\cpy.pdf
;FILE_NAME=/Oracle/Printers/Out/cpy.pdf
FILE_TYPE=1
PDL=isipdf.dll
PRINTDEF=PrintDef - PDF
FONTSECT=Docuflex Compound Document,FILE:

```

For more information about the keys and their values, see *Setting Up ISICPY (Windows & UNIX)* on page 39.

Using ISICPY (WINDOWS & UNIX)

ISICPY uses *ISICPY.INI* as the source for controlling print datastream processing. ISICPY performs the print datastream translation, and *ISICPY.INI* specifies the input and output datastream formats.

To Use ISICPY

- Run the executable and supply the location, including the path and filename, of the *ISICPY.INI* file.

ISICPY performs the print datastream translation using the input and output channels you specified.

PRESENTING DOCUMENTS WITH OVERLAYS AND

WATERMARKS

ISICPY includes a feature allowing overlays and watermarks to be applied during the conversion of Docuflex documents. Overlays and watermarks are often incorporated to

- mark a document as a draft or confidential copy
- obscure sensitive company information
- include archival security features.

Note For the remainder of this section, the term “overlay” refers both to overlays and watermarks.

In order to use overlays, you must first define them as sections in the *ISICPY.INI* file. Then, you control the selection of specific overlays via an `OVERLAYS=` entry.

Setting Up Overlays

The overlay sections contain the normal "channel" specifications (from Docuflex) expected by *ISICPY32* or *DC2CPY32*, with the addition of up to five optional parameters.

Parameter	Value
WHEN	When to apply the overlay, based on the parity/position of each page encountered in the document. The acceptable values are "all", "first", "middle", "last", "odd", "even", "notfirst", and "notlast". <i>The default value is "all".</i>
ZORDER	Where to place the overlay, relative to the content of the page. The acceptable values are "bottom" and "top". Items on "top" may obscure items below; this could be useful to mask sensitive information. <i>The default is "bottom".</i>
TOP	The amount to move the overlay vertically. The value may be given in inches (with a trailing quotation mark to denote inches) or a numeric value at 14400 DPI. <i>The default value is 0.</i>
LEFT	The amount to move the overlay horizontally. The value may be given in inches (with a trailing quotation mark to denote inches) or a numeric value at 14400 DPI. <i>The default value is 0.</i>
FEED	The tray number or PaperSource for which the overlay is applicable. <i>The default value is -1 (all sheets).</i>

The following *ISICPY.INI* sections are samples of overlay specifications:

```
[PREPRINT_FRONT]
OUTPUT=0
FILE_NAME=C:\watermarks\preprinted front.jpg
FILE_TYPE=1
PDL=isisjpeg.dll
PRINTDEF=PrintDef - JPG
WHEN=odd
FEED=4
```

```
¶
[ DUP_WATERMARK ] ¶
OUTPUT=0 ¶
FILE_NAME=c:\watermarks\duplicate.dcd ¶
FILE_TYPE=2 ¶
PDL=isisdcd.dll ¶
PRINTDEF=PrintDef - DCD ¶
WHEN=all ¶
TOP=3" ¶
LEFT=1.5" ¶
§
```

Using Overlays

You trigger the inclusion of one or more overlays with an OVERLAYS= entry in the [ISICpy] section of the *ISICPY.INI* file. If you want to include multiple overlays, you must separate the names of each overlay with a comma.

```
[ISICpy]
; =====
; ===== General Options =====
; =====
ERROR_CLEAR=1
ERROR_FILE=C:\Oracle\Printers\Out\cpy.err
;ERROR_FILE=/Oracle/Printers/Out/cpy.err           ;UNIX syntax
:
:
:
OVERLAYS=PREPRINT_FRONT,DUP_WATERMARK
:
:
:
; =====
; ===== Input CHANNEL Options =====
; =====

[PREPRINT_FRONT]
OUTPUT=0
FILE_NAME=C:\watermarks\preprinted front.jpg
FILE_TYPE=1
PDL=isijpeg.dll
PRINTDEF=PrintDef - JPG
WHEN=odd
FEED=4

[DUP_WATERMARK]
OUTPUT=0
FILE_NAME=c:\watermarks\duplicate.dcd
FILE_TYPE=2
PDL=isidcd.dll
PRINTDEF=PrintDef - DCD
WHEN=all
TOP=3"
LEFT=1.5"
:
:
:
```

Tip When using overlays, you don't have to compose the Docuflex document using a special Member type; the presence or absence of overlays is controlled solely by entries in the *ISICPY.INI* file. Also, ISICPY only includes the first page of any overlay document, since overlays should only contain a single page.

PDLs & SUPPORTED FILE TYPES

In performing the printstream conversion process, ISICPY32 or DC2CPY32 requires certain input and output files to be in a particular format. While the process is possible with different file formats, the expected one increases efficiency. Note that not all PDLs are valid options in all instances. You specify these values in the **FILE_TYPE=** entries in the appropriate sections of the ISICPY.INI file.

PDL TYPE	WINDOWS		UNIX	
	INPUT	OUTPUT	INPUT	OUTPUT
AFP	3,4	3,4 (1 w/PrintDef set to AFP Stream)	3,4	3,4 (1 w/PrintDef set to AFP Stream)
BMP	1	n/a	1	n/a
DCD	2	2	2	2
EMF	1	n/a	n/a	n/a
HDC	n/a	1	n/a	n/a
JPEG	1	n/a	1	n/a
META	3,4,8,9	3,4,8,9	3,4,8,9	3,4,8,9
PCL	n/a	1	n/a	1
PNG	1	n/a	1	n/a
RTF	1	n/a	1	n/a
TEXT (ASCII)	2	n/a	2	n/a
TEXT (EBCDIC)	7	n/a	7	n/a

Your **FILE_TYPE=** entries specify the type of file organization, which can be one of the following:

- 1 - unformatted / buffered
- 2 - ASCII text with CR/LF
- 3 - IBM-style 4-byte block and record lengths (variable block)
- 4 - 2-byte record length in Least Significant Byte/Most Significant Byte order
- 8 - Barr Systems format with 1-byte length
- 9 - Barr Systems format with 2-byte length

CPYRULE

CPYRULE provides datastream “copy” features for Docupresentation.

CPYRULE is a Docupresentation rule Dynamic Link Library (DLL) that takes its parameters as attachment variables and provides an interface to the ISICPY functionality that converts one type of printstream to another via Common Objects.

Note For DFLXRULE, TRANRULE, and CPYRULE to run correctly with Oracle's Internet Document Server 2.0 (and later) on the Linux platform, you must update the export definition for LD_PRELOAD by adding this file to the preload list:

`/usr/lib/libstdc++-libc6.2-2.so.3`

Include this change in the script you use to start IDS.

EXECISICPY

CPYRULE.DLL has an *ExecISICPY* function that expects five attachment variables:

- **CPYINFILE**—input datastream file name
- **CPYOUTFILE**—output datastream filename
- **CPYCONFIGFILE**—name of *.INI* file
- **CPYOVERLAYS**—provides names(s) of overlays to apply; optional, same functionality as “OVERLAYS=” entry in *ISICPY.INI*. For more information, see Presenting Documents with Overlays and Watermarks.
- **CPYOFFSET**—provides file offset into a stacked DCD for a particular document; optional, default is 0.

The functionality is generalized for any kind of input and output that ISICPY supports. The particular input and output are determined by the entries in the specific CPYCONFIGFILE (*.INI*) given. Since a particular *.INI* has a given input and output channel type, you should name it according to the input and output type (e.g., *dcd2pdf.ini*). For an example of a configuration file that produces PDF as the output type, see DC2PDF.INI File Sample.

The configuration file describes an input and output channel. A channel describes the Common Objects PDL DLL, file type, and PrintDef required to read or write a file. Normally when running ISICPY, a channel also specifies the input or output filename. With the *ExecISICPY* function in CPYRULE.DLL, the CPYINFILE and CPYOUTFILE attachment variables specified by the caller determine the specific files.

Here is a sample invocation of ExecISICPY from a request type in DOCSERV.INI:

```
[ ReqType:ISICPY ]  
    function          = cpyrule->ExecISICPY
```

Note that the creation of PDF output requires both a PDF PrintDef and the font tables, *dfxfctrl.fdb* and *dfxfctrl.ssf*, which are maintained by DFXFCTRL.EXE or DC2FCTRL.EXE (both included with Common Objects).

DC2PDF.INI File Sample

```
[ISICpy]
; =====
; ===== General Options =====
; =====
ERROR_FILE=cpy.err
LOG_FILE=cpy.log
TRACE_FILE=cpy.trc
TRACE_ENABLED=0
PDL_INI=isi.ini
FONT_INI=isi.ini
PRINTDEF_INI=isi.ini
CHANNELS=2
CHANNEL_00=DCD_IN
CHANNEL_01=PDF_OUT
; =====
; ===== Document Options =====
; =====
DOC_NAME=ISICpy
FORMAT_ENABLE=0
TUMBLE_ENABLE=0
SUBSTITUTE=0
DOCUMENT_TYPE=0

; =====
; ===== Input CHANNEL Options =====
; =====

[DCD_IN]
; ===== DCD =====
OUTPUT=0
FILE_NAME=
FILE_TYPE=2
PDL=dc2dcd
PRINTDEF=PrintDef - DCD

; =====
; ===== Output CHANNEL Options =====
; =====

[PDF_OUT]
; ===== PDF =====
OUTPUT=1
FILE_NAME=
FILE_TYPE=1
PDL=dc2pdf
PRINTDEF=PrintDef - PDF
```

CPYADDTOCACHE

This function adds a file to the Docupresentation cache to be removed by the `irlw32->IRLPurgeCache` idle rule.

Note IDS will add an entry to the *.CHD file in the \docserv directory.

CPYAddToCache requires the following input attachment variables:

- **EXPIRESECONDS** — the number of seconds to hold in cache. This variable is optional, as the default is 3600.
- **FILETOCACHE** —the filename to add to the cache.

CPYAddToCache requires the following output attachment variables:

- **RESULTS** — either “SUCCESS” or a return code from IDS.
- **FILETOCACHE** — an echo of the input attachment variable.

CPYGETUNIQUESTRING

CPYGetUniqueString requires the following input attachment variable:

- **UNIQUELEN** — the length of the requested string. This variable is optional, as the default is 8 with a maximum is 255.

CPYGetUniqueString requires the following output attachment variables:

- **RESULTS** — either “SUCCESS” or a return code from IDS.
- **CPYUNIQUESTRING** — a unique string generated by instance of IDS (e.g., 00000001, 00000002).

Note Using this rule to create a unique filename will suffer the overhead of IDS processing a request.

DOCSERV.INI UPDATES

The following samples are examples of request types that are added to DOCSERV.INI.

Note You should use descriptive names for the request types. These names aren't checked for validity; they're to help you with recognition.

```
[ ReqType:CPYGUS ]  
    function = cpyrule->CPYGetUniqueString
```

```
[ ReqType:2CACHE ]
```

```
function = cpyrule->CPYAddToCache
```

Tip There may be a benefit to calling both **ExecISICPY** and **CPYAddToCache** at the same time to eliminate an extra request to IDS. Your DOCSERV.INI should contain a request type with both rules: You would send **CPYOUTFILE** for **ExecISICPY** and **FILETOCACHE** for **CPYAddToCache**.

```
[ ReqType:CPYCACHE ]
function = cpyrule->ExecISICPY
function = cpyrule->CPYAddToCache
```

COMMON OBJECTS DATABASE COMPATIBILITY

The Common Objects support a variety of popular databases on several operating platforms:

Platform	Required Common Objects	Supported database(s)
Linux	isidb.dll.so, isior92.so	Oracle 9.2
Windows	isidb_32.dll, isiodbc.w32	ODBC-supported databases: <ul style="list-style-type: none"> • IBM DB2 5.0 or higher • Microsoft SQL Server 6.5 or higher • Oracle 8.1.7 or higher • Sybase SQL Anywhere 5.5 or higher • Sybase 11.1 or higher

SECURING A DATABASE CONNECTION (WINDOWS & LINUX)

You can launch the Oracle Encrypt DSN utility to add encryption to a DSN file. This application stores encrypted versions of the user ID and password so that users aren't prompted for these each time they log on. The application is available for the following platforms:

- *dfxend.exe* (Windows)
- *dfxend* (Linux)

To Secure a Database Connection

1. From a command prompt, launch the utility followed by the user ID and password that you want to encrypt (e.g., **dfxend user_id password**).

The utility encrypts the user ID and password and generates the new "UID=" and "PWD=" lines to use in the DSN file (e.g., UID=5d574d655c604040 and PWD=5c4645735c775d6f5c665040).

2. Add the new values for the UID= and PWD= entries into the DSN file.

3. Add the flag “ENCRYPT=YES” to the DSN file to notify the driver that the UID and PWD fields are encrypted.

Example Add the line “SRVR=ENCRYPT=YES” to the DSN file if it doesn’t already have a “SRVR=” entry. For an Oracle driver (which doesn’t require a value for the “SRVR=” entry), your entry would be similar to the following:

```
SRVR=ENCRYPT=YES
```

Append “,ENCRYPT=YES” (note the comma) to the line if one already exists in the file. For a Sybase driver (which does require a value for the “SRVR=” entry), your entry would be similar to the following:

```
SRVR=server_name, ENCRYPT=YES
```

Glossary

AFP	Advanced Function Presentation. The ability of IBM-licensed programs to use the all-points-addressable concept to print text and illustrations on specialized IBM printers.
application	A computer program used for a particular kind of work, such as word processing or database management.
directory	Part of an MS-DOS structure for organizing files on disk. A directory can contain files and other directories (called subdirectories).
Docuflex	Skywire Software batch processing software that provides document assembly, variable data merging, and document finishing for multiple Document Packages.
Dynamic Load Library (DLL)	A Microsoft Windows or OS/2 executable code module that is loaded on demand and linked at run-time.
Dynamic Runtime Library (DRL)	A UNIX executable code module that is loaded on demand and linked at run-time.
operating system	Software that controls the execution of programs. An operating system may provide services such as resource allocation, scheduling, input/output control, and data management.
page description language (PDL)	A programming language that uses special commands to describe how text or an image will be printed on a page.
path	Within the MS-DOS operating system, the path refers to a listing of the directories that lead from the current directory to a file.
Windows	A multitasking graphical user interface environment that runs on MS-DOS-based computers.

INDEX

- Numerics
- 32-bit Common Objects 3
- A
- AFP
 - glossary definition 17
- AFP Printstream PDL 3
- application
 - glossary definition 17
- B
- Broker Objects 3
- C
- CODEDEF object 3
- Common Objects
 - installing for UNIX 2
 - installing for Windows 2
 - overview 1
- Common trace 3
- Composing documents with overlays and watermarks 6
- CPYAddToCache 13
- CPYGetUniqueString 13
- CPYRULE
 - functions
 - CPYAddToCache 13
 - CPYGetUniqueString 13
 - ExecISICPY 11
 - overview 11
- D
- Database compatibility 14
- Database connection, securing 14
- DC2CPY, *see* ISICPY
- DFXEND (encryption utility) 14
- directory
 - glossary definition 17
- DOCSERV.INI 13
- Docucreate Font Control 10
- Docuflex 2
- Document Objects 3
- Documerge 2
- Docusolve 2
- E
- EDL member management 3
- error and logging 3
- ExecISICPY 11
- F
- File I/O 1, 3
- Flat file EDL 3
- font database 10
- Font Management 1, 3
- Form Exit 10
- I
- INI file manager 3
- Installing
 - for UNIX 2
 - for Windows 2
- isi.ini file 9
- isiafp.dll / .so 3
- isibrokr.dll / .so 3
- isicodef.dll / .so 3
- isicom.dll / .so 3
- ISICPY
 - composing with overlays
 - discussed 6
 - setting up 7
 - using 9
 - discussed 1
 - Windows & UNIX
 - setting up 2
 - using
 - discussed 6
 - steps for using 6
- ISICPY.INI
 - supported file types 10
 - Windows & UNIX, discussed 2
- isictls.dll / .so 3
- isidbflt.dll / .so 3
- ISIDBLIB, discussed 14
- isidcd.dll 3
- isidocs.dll / .so 3
- isifile.dll / .so 3
- isifonts.dll / .so 3
- isifrmgr.dll / .so 3
- isiini.dll / .so 3
- isimae.dll / .so 3
- isimeta.dll / .so 3
- isiosys.dll / .so 3
- isiqueue.dll / .so 3
- isirtf.dll / .so 3

- isistats.dll / .so 4
- isitags.dll / .so 4
- isivlam.dll / .so 4
- J
- Job control management 3
- L
- Linux, system requirements 1
- M
- Merge and assembly management 3
- Metacode Print Stream PDL 3
- miscellaneous file blocking 3
- O
- operating system
 - glossary definition 17
- Output system management 3
- Overlays, composing documents with 6
- P
- path
 - glossary definition 17
- pcVLAM interface 4
- Persistent objects PDL 3
- Printcommander 1, 2, 1
- Processing statistics 4
- Q
- queue management 3
- R
- README.TXT 3
- Rich Text Format support 3
- S
- Securing a database connection 14
- Setting up the ISI.INI file 9
- Setting up the UNIX environment 3
- shared objects 1
- System requirements
 - Linux 1
 - Windows 1
- T
- Tag Data storage object 4
- TRACE 10
- Transall Applications 2
- U
- UNIX 1, 3, 9
 - environment setup
 - discussed 3
 - running the install script 4
 - steps for setting up 3
- installation
 - copying files 2
 - setting up isi.ini
 - DFXFONT 10
 - discussed 9
 - form exits 9
- W
- Watermarks, *see Overlays*
- Windows 3
 - glossary definition 17
 - System requirements 1