

FLEXCUBE UBS Installation  
Oracle FLEXCUBE Universal Banking  
Release 14.0.0.0.0  
[December] [2017]



---

# Table of Contents

<b>1.</b>	<b>FLEXCUBE UBS INSTALLATION .....</b>	<b>1-1</b>
1.1	INTRODUCTION .....	1-1
1.2	DEPLOYMENT OPTIONS .....	1-1
1.2.1	<i>Centralized</i> .....	1-1
1.2.2	<i>Decentralized</i> .....	1-1
1.2.3	<i>Hybrid</i> .....	1-2
1.3	ORACLE FLEXCUBE INSTALLATION VARIETIES.....	1-3
1.3.1	<i>Creating New Installation Directory</i> .....	1-3
1.3.2	<i>Creating Patch-set Directory</i> .....	1-3
1.3.3	<i>New Installation</i> .....	1-4
1.3.4	<i>Cloning Existing Environment</i> .....	1-4
1.3.5	<i>Applying Patchset</i> .....	1-4
1.4	COMPONENTS OF ORACLE FLEXCUBE.....	1-5
1.4.1	<i>Plug-Ins Required</i> .....	1-5
1.4.2	<i>Setting up the Plug-Ins</i> .....	1-6
1.4.3	<i>Manual Deployment</i> .....	1-6
1.4.4	<i>FCUBS Application Installation</i> .....	1-7
1.4.5	<i>GATEWAY Application Installation</i> .....	1-8
1.4.6	<i>Restful Services</i> .....	1-8
1.4.7	<i>SWITCH Interface Installation</i> .....	1-8
1.4.8	<i>FCUBS Process Flow Deployment</i> .....	1-9
1.4.9	<i>Standalone Scheduler Installation</i> .....	1-9

# 1. FLEXCUBE UBS Installation

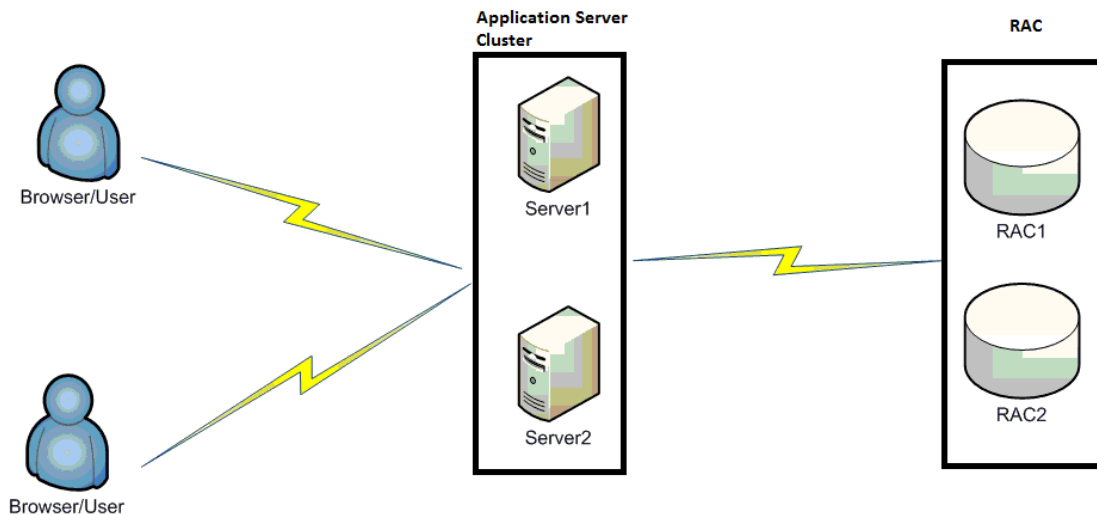
## 1.1 Introduction

This manual is designed to help acquaint you with the various deployment options supported by the installer, the various components that make FLEXCUBE UBS, the plug-ins that are supported by these components and the detailed installation steps of the various components supported by Oracle FLEXCUBE.

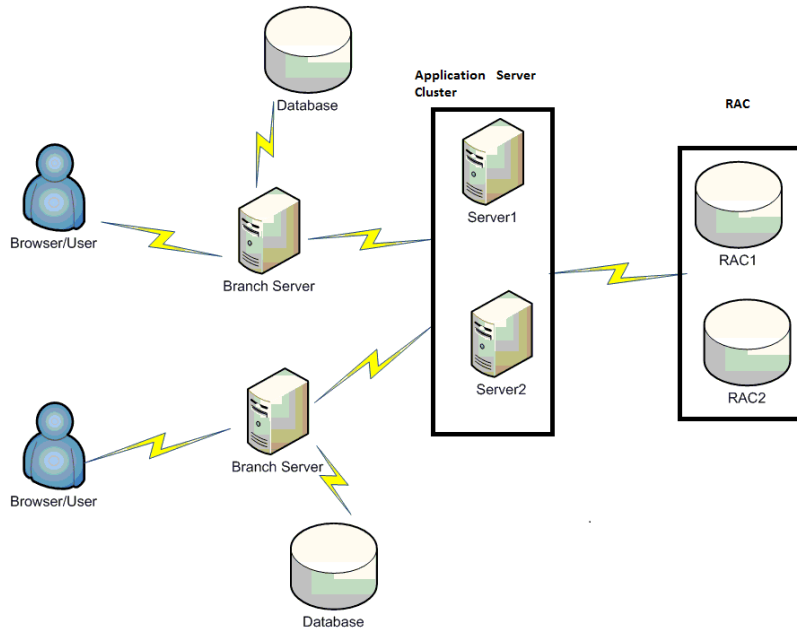
## 1.2 Deployment Options

<b>Centralized</b>	In this mode there will be only one setup. The build, configuration and deployment would be targeted to this setup alone.
<b>De-Centralized</b>	Here there would be 2 setups, i.e. Host and Branch. Build, configuration and deployment would be done separately for each of these setup.
<b>Hybrid</b>	Combination of both the above said. Build, configuration and deployment would be based on what is handled by each of the setup.

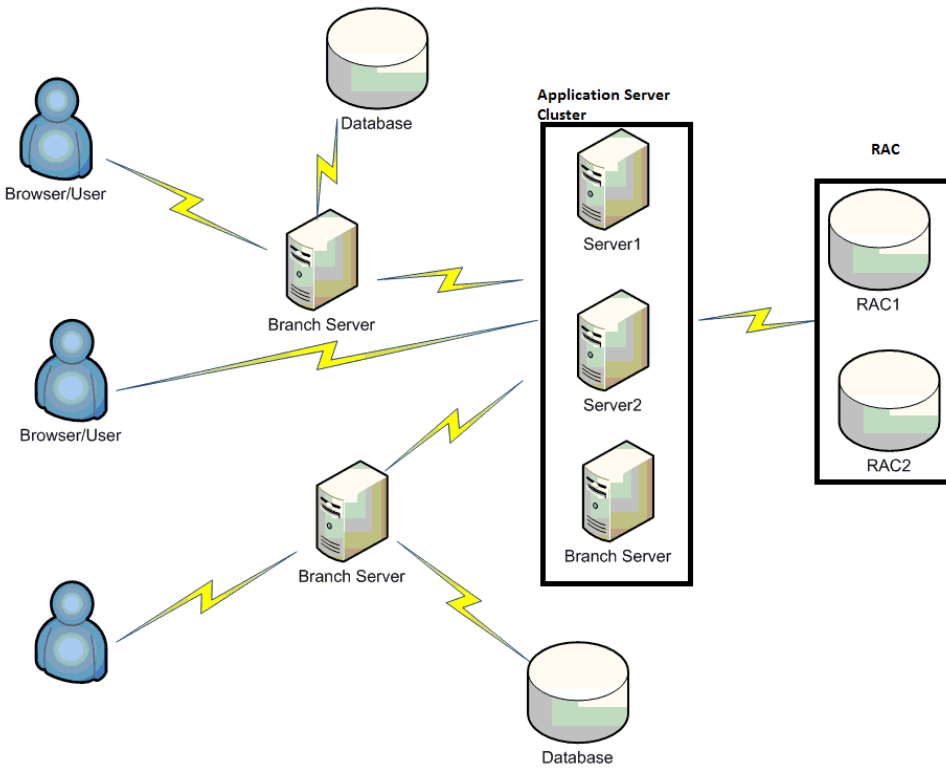
### 1.2.1 Centralized



### 1.2.2 Decentralized



### 1.2.3 Hybrid

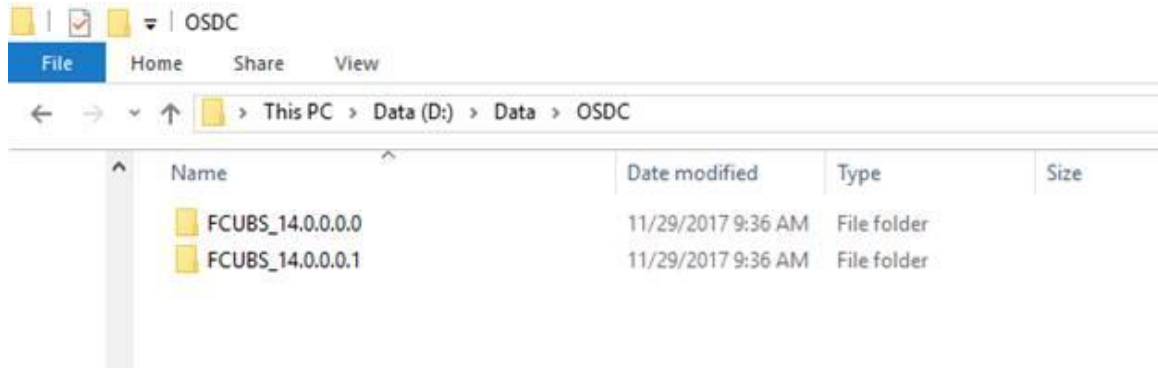


## 1.3 Oracle FLEXCUBE Installation Varieties

Installing FLEXCUBE can happen in multiple varieties. Please follow steps mentioned in first 3 sections before starting any installation steps.

Installer does not accept spaces in file path. Its applicable for all path including but not limited to source path, temp destination directory, property file path etc.

The below screenshot shows sample “OSDC.zip” folder structure. This is the location to be pointed, if installer asks for FC Home directory.



In the above screenshot, main release content can be found directly under this directory.

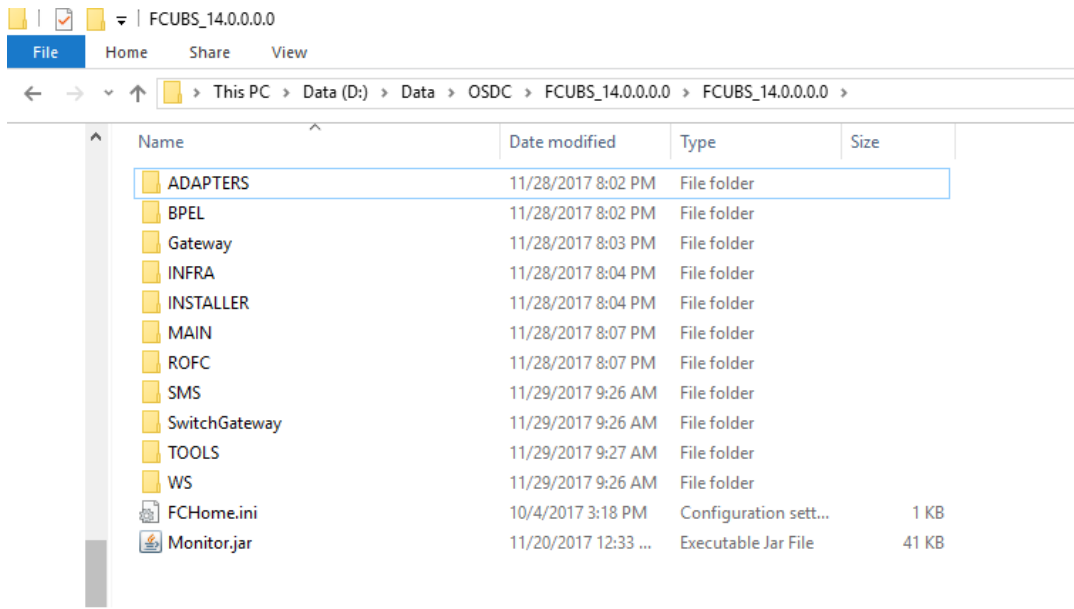
### 1.3.1 Creating New Installation Directory

Extract the ZIP file **FCUBS\_<Version>.zip**

1. Create a **FCUBS\_<Version>** Folder and extract the above zip into this folder.
2. Make sure that **FCUBS\_<Version>** Directory is accessible by both Application server and Database Server.

### 1.3.2 Creating Patch-set Directory

1. Extract the ZIP file **FCUBS\_<Patch No>.zip** into **FCUBS\_<Patch No>** folder.
2. Make Sure that the **FCUBS\_<Patch No>** folder should be kept parallel to **FCUBS\_<Version>** folder as shown below.



### 1.3.3 New Installation

This section explains the step by step procedure for fresh installation using installer:

1. Apply the environment settings for FLEXCUBE. (Refer to the document [FCUBS\\_Installer\\_Prerequisite](#)).

### 1.3.4 Cloning Existing Environment

1. Navigate to the folder which was chosen as **FCUBS\_<Version>** and Launch the installer by running FCUBSInstaller.bat in the Installer folder.
2. Import a dump of FLEXCUBE database. (Refer 'Installing Oracle FLEXCUBE Database' chapter of [FCUBS\\_DB\\_Setup](#))
3. Create two FLEXCUBE Users using Installer.(Refer [User\\_Creation\\_Utility](#) document under Utilities).
4. Get the Property file of the Environment to be cloned and Modify the property file by loading it in the Installer.
5. Update the Ear file with the New Property File.
6. Deploy the Built EAR in application server and login to the FLEXCUBE.
7. Login into FLEXCUBE using the users created as part of step3 and reset/Modify the Password of all the users.

### 1.3.5 Applying Patchset

This section describes applying patchset. The PATCHSET\_INSTALLATION flag should be Y in env.properties.

### 1.3.5.1 Applying FLEXCUBE Patch Set - Middleware

#### Weblogic

1. Navigate to the Patch Set folder **FCUBS\_<Patch No>** and Launch the installer by running FCUBSInstaller.bat in the Installer folder.
2. Provide the path of the **FCUBS\_<Patch No>** folder as Source Path.
3. Build an EAR by loading the existing property file.
4. Deploy the built EAR in weblogic application server.



Building of EAR can be done in remote location but the application deployment should be done in local system where the application server is installed.

#### Websphere

1. Navigate to the folder which was chosen as **FCUBS\_<Patch No>** and Launch the installer by running FCUBSInstaller.bat in the Installer folder.
2. Provide the path of the **FCUBS\_<Patch No>** folder as Source Path.
3. Build an EAR by loading the existing property file
4. Deploy the built EAR in websphere application server.

### 1.3.5.2 Applying FLEXCUBE Patch set - DATABASE

1. Navigate to the folder which was chosen as **FCUBS\_<Patch No>** and Launch the installer by running FCUBSInstaller.bat in the Installer folder.
2. Compile the Data Base Objects by Referring to FCUBS\_DB\_Compilation Document.
3. Provide the path of the **FCUBS\_<Patch No>** folder as Source Path.
4. Provide Database server connection details
5. Apply the patch set into the Database server.

## 1.4 Components of Oracle FLEXCUBE

Following are the components of the oracle FLEXCUBE:

- Open Development Tool (ODT)
- FLEXCUBE Universal Banking Solution (FCUBS)
- GATEWAY
- Restful Services
- SWITCH Interface Installation
- Standalone Scheduler

### 1.4.1 Plug-Ins Required

Application	Plug-ins Supported
-------------	--------------------

Open Development Tool	Not applicable
Oracle FLEXCUBE Universal Banking	<ul style="list-style-type: none"> <li>• Branch</li> <li>• BPEL</li> <li>• Scheduler</li> <li>• Reports</li> <li>• FGL</li> <li>• OFTW</li> <li>• DMS</li> <li>• Insulation</li> </ul>
Oracle FLEXCUBE ELCM	<ul style="list-style-type: none"> <li>• BPEL</li> <li>• Scheduler</li> <li>• FGL</li> <li>• Reports</li> <li>• OFTW</li> <li>• DMS</li> </ul>
Gateway	Not applicable
Restful Services	Not applicable
Switch Interface Installation	Not applicable
Standalone Scheduler	Not applicable

### 1.4.2 **Setting up the Plug-Ins**

The Setting\_up\_Plugins document describes the step by step details of setting up the various plug-ins supported by FLEXCUBE. This is under FCUBS Main.

### 1.4.3 **Manual Deployment**

This section explains the steps to deploy Oracle FLEXCUBE UBS application manually. Application server resources required are detailed in “Resources\_To\_Be\_Created” document. This is present under Environment Setup > Application Server

Follow the document “[FCUBS Manual Deployment WL](#)” for Weblogic.

For Websphere please follow “[FCUBS Manual Deployment WAS](#)”.

For Tomcat, please refer to the document “[Branch Deployment on Tomcat](#)”.



Tomcat is supported only for Deployment of Decentralized branch war file. FCUBS EAR deployment is only on Weblogic or Websphere.

All these documents are present in the Environment Setup > Application Server.



## 1.4.4 FCUBS Application Installation

All documents can be referred under FCUBS Components > FCUBS.

<p>This Section describes the various operations performed for FCUBS application. This application is operated in two modes during property file creation:</p> <ul style="list-style-type: none"> <li>• Custom mode: All inputs are provided by the user.</li> <li>• Default Mode: Property file is created by considering the default properties. User inputs are minimal.</li> </ul>			
<b>Database Installation</b>	<p>This document gives the step by step instructions for setting up FCUBS Data Base. It also explains the process of importing full dump, and also explains the process of loading static data. Refer to the document <a href="#">FCUBS_DB_Setup</a></p>		
<b>Building Property File</b>	<p>This section explains the detailed instructions to be followed for Building FCUBS Property file , it explains the instructions for setting up the property file with plug-ins and plug-in related properties. Refer to the document <a href="#">FCUBS_Property_File_Creation</a></p>		
<b>Building Ear</b>	<p>This section explains the detailed instructions to be followed for Building FCUBS EAR, it explains the step by step instructions for building the EAR with the corresponding property file. Refer to the document <a href="#">FCUBS_EAR_Building</a></p>		
<b>Application Deployment</b>	<b>Weblogic</b>	<b>FULL Deployment</b>	<p>This section gives the detailed instructions for FULL deployment of UBS application in weblogic server, it also explains the basic instructions for creating the resources required for deployment of UBS application. Refer to the document FUBS_Application_Deployment_Weblogic</p>
		<b>Patch/Patchset Deployment</b>	<p>This section gives the detailed instructions for Partial deployment of UBS application, It explains the steps for deployment of the patches of the existing ear in weblogic server. Refer to the document FUBS_Application_Deployment_Weblogic</p>
	<b>Websphere</b>	<b>FULL Deployment</b>	<p>This section gives the detailed instructions for FULL deployment of UBS application in websphere server, it explain the steps to be followed for deploying UBS application in websphere server using installer Refer to the document FUBS_Application_Deployment_Websphere</p>

		<b>Patch/Patchset Deployment</b>	This section gives the detailed instructions for partial deployment of UBS application in websphere server, it explains the steps to be followed for deploying the patches for the existing application in websphere server. Refer to the document <a href="#">FUBS_Application_Deployment_Web sphere</a>
--	--	----------------------------------	---

## 1.4.5 GATEWAY Application Installation

All documents can be referred under FCUBS Components > Gateway.

<b>Building Property file</b>	This section explains the detailed instructions to be followed for Building GATEWAY Property file, it explains the instructions for setting up the property file with plug-ins and plug-in related properties. Refer to the document <a href="#">GATEWAY_Property_File_Creation</a>
-------------------------------	---


## 1.4.6 Restful Services

All documents can be referred under FCUBS Components > Restful Services.

<b>Building Ear</b>	This section explains the detailed instructions to be followed for Building Restful Service EAR, it explains the step by step instructions for building the EAR. Refer to the document <a href="#">RETSERVICE_Compliance_Build</a>	
<b>Application Deployment</b>	<b>Weblogic</b>	This section gives the detailed instructions for FULL deployment of Restful application in weblogic server. Refer to the document <a href="#">RETSERVICE_Deployment_Weblogic</a>
	<b>Websphere</b>	This section gives the detailed instructions for FULL deployment of Restful application in websphere server. Refer to the document <a href="#">RETSERVICE_Deployment_Websphere</a>

### 1.4.7 SWITCH Interface Installation

All documents can be referred under FCUBS Components > Switch.

<b>Building Ear for Monitor</b>	<p>This section explains the detailed instructions to be followed for Building Monitor EAR, it explains the step by step instructions for building the EAR with the corresponding property file. Refer to the document <a href="#">Switch_Monitor_Installation</a></p> <p> For running Monitor setup, switch EAR should be available</p>
---------------------------------	---

## 1.4.8 FCUBS Process Flow Deployment

<b>FCUBS Process Flow Deployment</b>	This section describes the instructions for FCUBS process flow deployment, it also provides detailed description on deploying FCUBS BPEL process flows onto a weblogic server configured with SOA suite components . It covers different approaches for deploying a process. Refer to the document <a href="#">FCUBS_ProcessFlow_Deployment</a> under FCUBS Main.
--------------------------------------	---

<b>Building Property file</b>	This section explains the detailed instructions to be followed for Building Scheduler Property file, it explains the instructions for setting up the property file with plug-ins and plug-in related properties. Refer to the document <a href="#">Scheduler Property File Creation</a>
-------------------------------	---

## 1.4.9 S tand al one Sched uler Install ation

All documents can be referred under FCUBS Components > Scheduler.



FLEXCUBE UBS Installation  
[December] [2017]  
Version 14.0.0.0

Oracle Financial Services Software Limited  
Oracle Park  
Off Western Express Highway  
Goregaon (East)  
Mumbai, Maharashtra 400 063  
India

Worldwide Inquiries:  
Phone: +91 22 6718 3000  
Fax: +91 22 6718 3001  
<https://www.oracle.com/industries/financial-services/index.html>

Copyright © [2007], [2017], Oracle and/or its affiliates. All rights reserved.

Oracle and Java are registered trademarks of Oracle and/or its affiliates. Other names may be trademarks of their respective owners.

**U.S. GOVERNMENT END USERS:** Oracle programs, including any operating system, integrated software, any programs installed on the hardware, and/or documentation, delivered to U.S. Government end users are "commercial computer software" pursuant to the applicable Federal Acquisition Regulation and agency-specific supplemental regulations. As such, use, duplication, disclosure, modification, and adaptation of the programs, including any operating system, integrated software, any programs installed on the hardware, and/or documentation, shall be subject to license terms and license restrictions applicable to the programs. No other rights are granted to the U.S. Government.

This software or hardware is developed for general use in a variety of information management applications. It is not developed or intended for use in any inherently dangerous applications, including applications that may create a risk of personal injury. If you use this software or hardware in dangerous applications, then you shall be responsible to take all appropriate failsafe, backup, redundancy, and other measures to ensure its safe use. Oracle Corporation and its affiliates disclaim any liability for any damages caused by use of this software or hardware in dangerous applications.

This software and related documentation are provided under a license agreement containing restrictions on use and disclosure and are protected by intellectual property laws. Except as expressly permitted in your license agreement or allowed by law, you may not use, copy, reproduce, translate, broadcast, modify, license, transmit, distribute, exhibit, perform, publish or display any part, in any form, or by any means. Reverse engineering, disassembly, or decompilation of this software, unless required by law for interoperability, is prohibited.

The information contained herein is subject to change without notice and is not warranted to be error-free. If you find any errors, please report them to us in writing.

This software or hardware and documentation may provide access to or information on content, products and services from third parties. Oracle Corporation and its affiliates are not responsible for and expressly disclaim all warranties of any kind with respect to third-party content, products, and services. Oracle Corporation and its affiliates will not be responsible for any loss, costs, or damages incurred due to your access to or use of third-party content, products, or services.

