

Oracle FLEXCUBE Information Server User Guide
**Oracle FLEXCUBE Enterprise Limits
and Collateral Management**
Release 14.0.0.0.0

Part Number E88409-01

November 2017

Oracle FLEXCUBE Information Server User Guide
November 2017
Oracle Financial Services Software Limited

Oracle Park

Off Western Express Highway
Goregaon (East)
Mumbai, Maharashtra 400 063
India
Worldwide Inquiries:
Phone: +91 22 6718 3000
Fax: +91 22 6718 3001
www.oracle.com/financialservices/

Copyright © 2007, 2017, Oracle and/or its affiliates. All rights reserved.

Oracle and Java are registered trademarks of Oracle and/or its affiliates. Other names may be trademarks of their respective owners.

U.S. GOVERNMENT END USERS: Oracle programs, including any operating system, integrated software, any programs installed on the hardware, and/or documentation, delivered to U.S. Government end users are "commercial computer software" pursuant to the applicable Federal Acquisition Regulation and agency-specific supplemental regulations. As such, use, duplication, disclosure, modification, and adaptation of the programs, including any operating system, integrated software, any programs installed on the hardware, and/or documentation, shall be subject to license terms and license restrictions applicable to the programs. No other rights are granted to the U.S. Government.

This software or hardware is developed for general use in a variety of information management applications. It is not developed or intended for use in any inherently dangerous applications, including applications that may create a risk of personal injury. If you use this software or hardware in dangerous applications, then you shall be responsible to take all appropriate failsafe, backup, redundancy, and other measures to ensure its safe use. Oracle Corporation and its affiliates disclaim any liability for any damages caused by use of this software or hardware in dangerous applications.

This software and related documentation are provided under a license agreement containing restrictions on use and disclosure and are protected by intellectual property laws. Except as expressly permitted in your license agreement or allowed by law, you may not use, copy, reproduce, translate, broadcast, modify, license, transmit, distribute, exhibit, perform, publish or display any part, in any form, or by any means. Reverse engineering, disassembly, or decompilation of this software, unless required by law for interoperability, is prohibited.

The information contained herein is subject to change without notice and is not warranted to be error-free. If you find any errors, please report them to us in writing.

This software or hardware and documentation may provide access to or information on content, products and services from third parties. Oracle Corporation and its affiliates are not responsible for and expressly disclaim all warranties of any kind with respect to third-party content, products, and services. Oracle Corporation and its affiliates will not be responsible for any loss, costs, or damages incurred due to your access to or use of third-party content, products, or services.

Contents

1. Preface	1-1
1.1 Introduction.....	1-1
1.2 Audience.....	1-1
1.3 Documentation Accessibility.....	1-1
1.4 Abbreviations.....	1-1
1.5 Organization	1-1
1.6 Related Documents	1-2
1.7 Glossary of Icons.....	1-2
2. Oracle FLEXCUBE Information Server	2-1
2.1 Introduction.....	2-1
2.2 Maintenances in Oracle FLEXCUBE.....	2-1
2.2.1 <i>Maintaining Batch Programs</i>	2-1
2.2.2 <i>Maintaining Details of Data Transformation Tool</i>	2-1
2.2.3 <i>Maintaining FLEXCUBE Information Server Scheduler</i>	2-4
2.3 Generating Reports	2-6
2.4 Reports.....	2-6
2.4.1 <i>New Sanctioned Limit</i>	2-7
2.4.2 <i>Unutilized Limit</i>	2-10
2.4.3 <i>Expired Line Status</i>	2-12
2.4.4 <i>Expired Line Details</i>	2-14
2.4.5 <i>Limits Sanctioned Vs Utilized</i>	2-16
2.4.6 <i>Limit Details</i>	2-18
2.4.7 <i>Credit Rating</i>	2-20
2.4.8 <i>Overdrawn Lines</i>	2-22
2.4.9 <i>Overdue Amount Recovery</i>	2-24
2.4.10 <i>Exposure Details</i>	2-26
2.4.11 <i>Exposure Top 10 Liabilities</i>	2-27
2.5 Creating Dynamic Reports	2-28
3. Function ID Glossary	3-1

1. Preface

1.1 Introduction

FLEXCUBE Information Server facilitates reporting of analysable data that helps improved decision making. The maintenances required for the proper functioning of the system and the processing related to it are covered in this manual.

1.2 Audience

This manual is intended for the following User/User Roles:

Role	Function
Back office data entry Clerks	Input functions for maintenance related to the interface
Back office Managers/Officers	Authorization functions
Higher Level Management	Analyse business performances

1.3 Documentation Accessibility

For information about Oracle's commitment to accessibility, visit the Oracle Accessibility Program website at <http://www.oracle.com/pls/topic/lookup?ctx=acc&id=docacc>.

1.4 Abbreviations

Abbreviation	Description
System	Unless specified, it shall always refer to Oracle FLEXCUBE Enterprise Limits and Management Collaterals
RPD	Repository Definition File
MIS	Management Information System
LCY	Local Currency
FCY	Foreign Currency
EOTI	End of Transaction Input

1.5 Organization

This manual is organized into the following chapters:

Chapter 1	<i>About this Manual</i> gives information on the intended audience. It also lists the various chapters covered in this User Manual.
Chapter 2	<i>Oracle FLEXCUBE Information Server</i> discusses about the features which are to be maintained in Oracle FLEXCUBE for enterprise reporting and the pre-shipped reports.



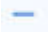

Chapter 3	<i>Function ID Glossary</i> has alphabetical listing of Function/Screen ID's used in the module with page references for quick navigation.
------------------	--

1.6 Related Documents

You may refer the following manuals for more information:

1.7 Glossary of Icons

This User Manual may refer to all or some of the following icons:

Icons	Function
	Exit
	Add row
	Delete row
	Option List

Refer the Procedures User Manual for further details about the icons.

2. Oracle FLEXCUBE Information Server

2.1 Introduction

Oracle FLEXCUBE Information system provides for flexible enterprise reporting that helps improved decision making. The Oracle FLEXCUBE Information Server collects the data stored in Oracle FLEXCUBE and generates reports.

You can use the Oracle FLEXCUBE Information Server for monitoring your business performance closely. With the reports generated using Oracle FLEXCUBE Information Server, you can have a vivid view of the problems in the business environment and identify the areas that require attention. You can also analyse the new business opportunities and trends that help you enhance your businesses.

The key features of Oracle FLEXCUBE Information Server reporting are as follows:

- Extraction of information in a consumable format at all operational levels and management hierarchies
- Cross functional data in summary form
- Provisions for totals, averages, changes, variances or ratios
- Information based on customer types and product types.
- Historical data for comparisons

2.2 Maintenances in Oracle FLEXCUBE

In order to use the Oracle FLEXCUBE Information Server, you need to maintain certain information in Oracle FLEXCUBE. These maintenances are discussed under the following headings.

2.2.1 Maintaining Batch Programs

You need to maintain the batch program 'GEBEXTRC' using 'Mandatory Batch Program Maintenance' screen. This batch extracts the data from Oracle FLEXCUBE during end of transaction input (EOTI) stage at head office. You also need to maintain the extraction routine.

After EOD operations, you need to run the batch 'GEBEXTRC' as intraday. During the intraday batch, the system populates the data onto FIS related tables.

2.2.2 Maintaining Details of Data Transformation Tool

You need to map the source entities (staging tables) to the respective target entities (fact and dimension tables) using 'Data Transformation Tool' screen. To invoke this screen, type

'RPDDTT' in the field at the top right corner of the application toolbar and click the adjoining arrow button.

The screenshot shows the 'Data Transformation Tool' window. At the top, there is a toolbar with 'New' and 'Enter Query' buttons. Below the toolbar, the main workspace is divided into two columns of input fields. The left column contains 'Source Entity *', 'Program Name', and 'Program Description *'. The right column contains 'Target Entity *', 'Surrogate Key Name', and 'Surrogate Key Type *' with a dropdown menu set to 'ASCII'. A 'Mapping Details' button is centered below the input fields. The bottom status bar includes 'Maker Checker', 'Date Time:', 'Mod No', 'Record Status', 'Authorization Status', and an 'Exit' button.

Specify the following details:

Source Entity

Select the source entity that you need to map to the target entity. The option list displays the existing staging tables available for selection. Select the appropriate one.

Target Entity

Select the target entity that you need to map to the selected source entity. The option list displays the existing fact and dimension tables available for selection. Select the appropriate one.

Program Name

Based on the target entity, the system displays the program name.

Program Description

Enter a brief description of the above program.

Surrogate Key Name

Based on the target entity, the system displays the surrogate name.

Surrogate Key Type

The surrogate key type is ASCII.

Once you have specified the above details, click 'Mapping Details' button to map the source and target elements. The system displays the 'Dimension Mapping Details' screen.

Dimension Mapping Details

Source Entity ESTB_STG_ACC_PERIOD Target Entity DIM_ACC_PERIOD
Program Name LD#_DIM_ACC_PERIOD Enrich

Source-Target Element Mapping

Source Element *	Target Element *	Key Column Type *
<input checked="" type="checkbox"/>		

Ok Cancel

Click 'Enrich' button to populate the source elements. The system will populate the source elements in the screen.

You may also manually enter the source elements, In that case you need not click 'Enrich' button. You can directly specify the following details:

Source Element

Select the source element that you need to map to the target element.

Target Element

Select the target element to be mapped to the selected source element.

Key Column Type

Select the key column type. The drop-down list displays the following options:

- No versioning
- Natural key
- Versioning

Select the appropriate one.

You can add more rows to the list using add button. To delete a row, check the adjoining checkbox and click delete button.

Note

The required dimension mapping details are available within Oracle FLEXCUBE. However, if you need to modify the mapping, you can do it using these screens.

2.2.2.1 Mapping Facts

You can map the source and target elements and define the key column type and transform rules using 'Fact Mapping Details' screen.

Source Element *	Target Element *	Key Column Type *	Transform Rule
<input checked="" type="checkbox"/> MIS_DATE	<input checked="" type="checkbox"/> MIS_DATE	Natural Key	TRUNC(ESTB_STG_I
<input type="checkbox"/> BRANCH_KEY	<input checked="" type="checkbox"/> BRANCH_KEY	Dimension Key	ESTB_STG_LOANS.B
<input type="checkbox"/> ACCOUNT_NUMBER	<input checked="" type="checkbox"/> ACCOUNT_NUMBER	Natural Key	ESTB_STG_LOANS.A
<input type="checkbox"/> CURRENCY_KEY	<input checked="" type="checkbox"/> CURRENCY_KEY	Dimension Key	ESTB_STG_LOANS.C
<input type="checkbox"/> PRODUCT_KEY	<input checked="" type="checkbox"/> PRODUCT_KEY	Dimension Key	ESTB_STG_LOANS.P
<input type="checkbox"/> CUSTOMER_KEY	<input checked="" type="checkbox"/> CUSTOMER_KEY	Dimension Key	ESTB_STG_LOANS.C
<input type="checkbox"/> VALUE_DATE	<input checked="" type="checkbox"/> VALUE_DATE	Measure	ESTB_STG_LOANS.V

Click 'Enrich' button to populate the source elements.

Specify the following details:

Source Element

Select the source element that you need to map to the target element.

Target Element

Select the target element to be mapped to the selected source element.

Key Column Type

Select the key column type. The drop-down list displays the following options:

- No versioning
- Natural key
- Versioning

Select the appropriate one.

Transform Rule

Define the transform rule.

2.2.3 Maintaining FLEXCUBE Information Server Scheduler

You can maintain the Oracle FLEXCUBE Information Server jobs and their dependencies using 'FLEXCUBE Information Server Scheduler Maintenance' screen. To invoke this screen,

type 'RPDSCH' in the field at the top right corner of the application toolbar and click the adjoining arrow button.

Specify the following details:

Job Type

Specify the job type 'Data Transformation'.

Scheduler Program Type

Specify the program type. By default, the system displays 'PLSQL_BLOCK'. However, you can modify this.

Scheduler Program ID

Select the program ID from the option list.

Scheduler Program Name

Based on the program ID, the system displays the name of the program.

Scheduler Program Action

Specify the program action.

Enable Flag

Check this box to enable the program action.

Scheduler Parent Program

Specify the scheduler parent program. You can select the appropriate program from the option list.

Schedule

Based on the selected scheduler parent program ID, the system displays the name of the schedule.

Note

The required scheduler maintenances are available in Oracle FLEXCUBE. However, if you need to modify the maintenances, you can do it using this screen.

Once you have specified the above details, save the maintenance.

2.3 Generating Reports

You can generate the various preset reports from Oracle FLEXCUBE Information Server. Login to Oracle Business Intelligence Enterprise Edition. Go to Dashboards. The reports are organized as tabs under the dashboard. You can drill down to the account level by clicking the data.

Following reports are available under the dashboards:

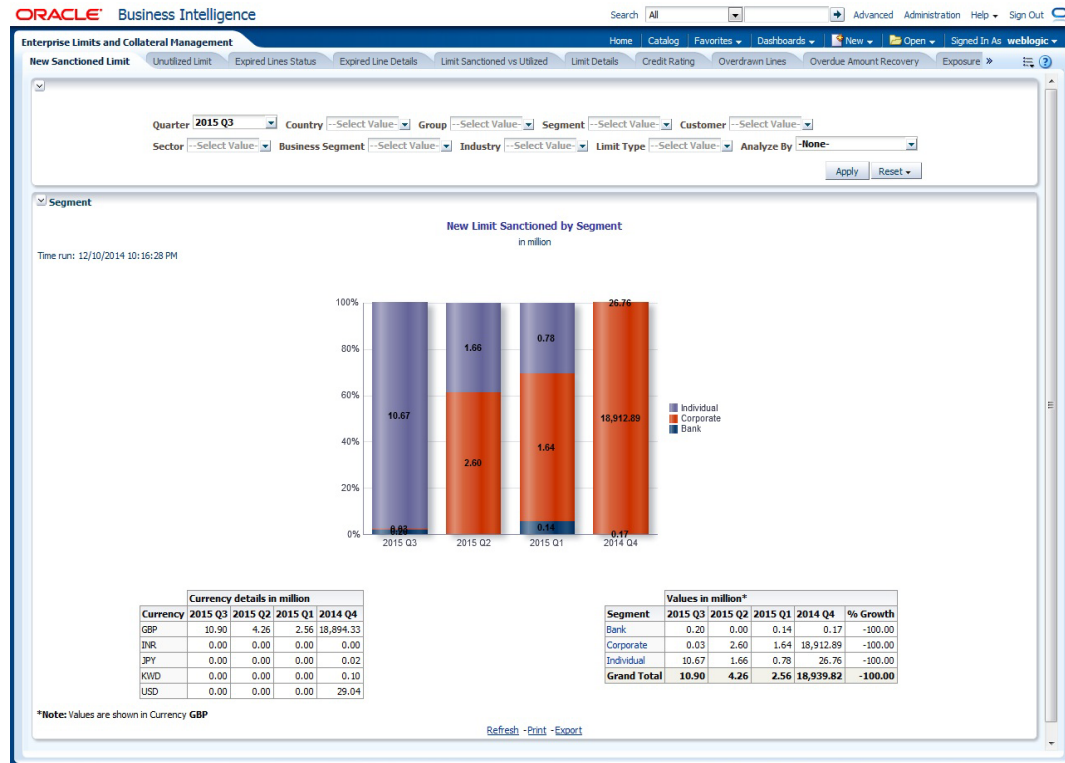
- New Sanctioned Limit
- Unutilized Limit
- Expired Lines Status
- Expired Line Details
- Limit Sanctioned vs Utilized
- Limit Details
- Credit Rating
- Overdrawn Lines
- Overdue Amount Recovery
- Exposure Details
- Exposure Top 10 Liabilities

2.4 Reports

The reports that you can view from the dashboard are discussed below.

2.4.1 New Sanctioned Limit

The New Sanctioned Limit report shows the details of new limit amounts sanctioned by the bank.



Analyze By

You can analyse the report by the following parameters.

- Segment
- Country
- Business segment
- Quarter
- Sector
- Limit type
- Group
- Liab Number
- Industry

Select the appropriate dimension from the drop down list and click 'Apply' button. The system displays the details of the new sanctioned limits in graph and tables, analysed based on the selected dimension.

You can also filter the reports based on the following parameters:

- Quarter
- Country
- Group
- Segment
- Customer
- Sector

- Business segment
- Industry
- Limit type

You can drill down to further levels by clicking the respective links, as illustrated below.

Analyze by Report	Drill down values	Report	Drill down values	
Segment	Bank	New Limit Sanctioned by Segment - Bank		
	Corporate	New Limit Sanctioned by Segment - Corporate	Group Code and Unclassified	New Limit Sanctioned by Segment Corporate - Customer
	Individual	New Limit Sanctioned by Segment - Individual		
Country	NA			
Business Segment	List of Business Segments and Unclassified	New Limit Sanctioned by Business Segment Secured & Unsecured	Secured	New Limit Sanctioned by Business Segment - Secured
			Unsecured	New Limit Sanctioned by Business Segment - UnSecured
Quarter	NA			
Sector	List of Sectors and Unclassified	New Limit Sanctioned by Sector - Secured & Unsecured		
Limit Type	Secured	New Limit Sanctioned by Type-Secured	Utilized	New Limit Sanctioned by Type-Secured - Utilized - Business Segment
			Unutilized	New Limit Sanctioned by Type-Secured - UnUtilized - Business Segment
	Unsecured	New Limit Sanctioned by Type-UnSecured	Utilized	New Limit Sanctioned by Limit Type - Unsecured - Utilized - Business Segment

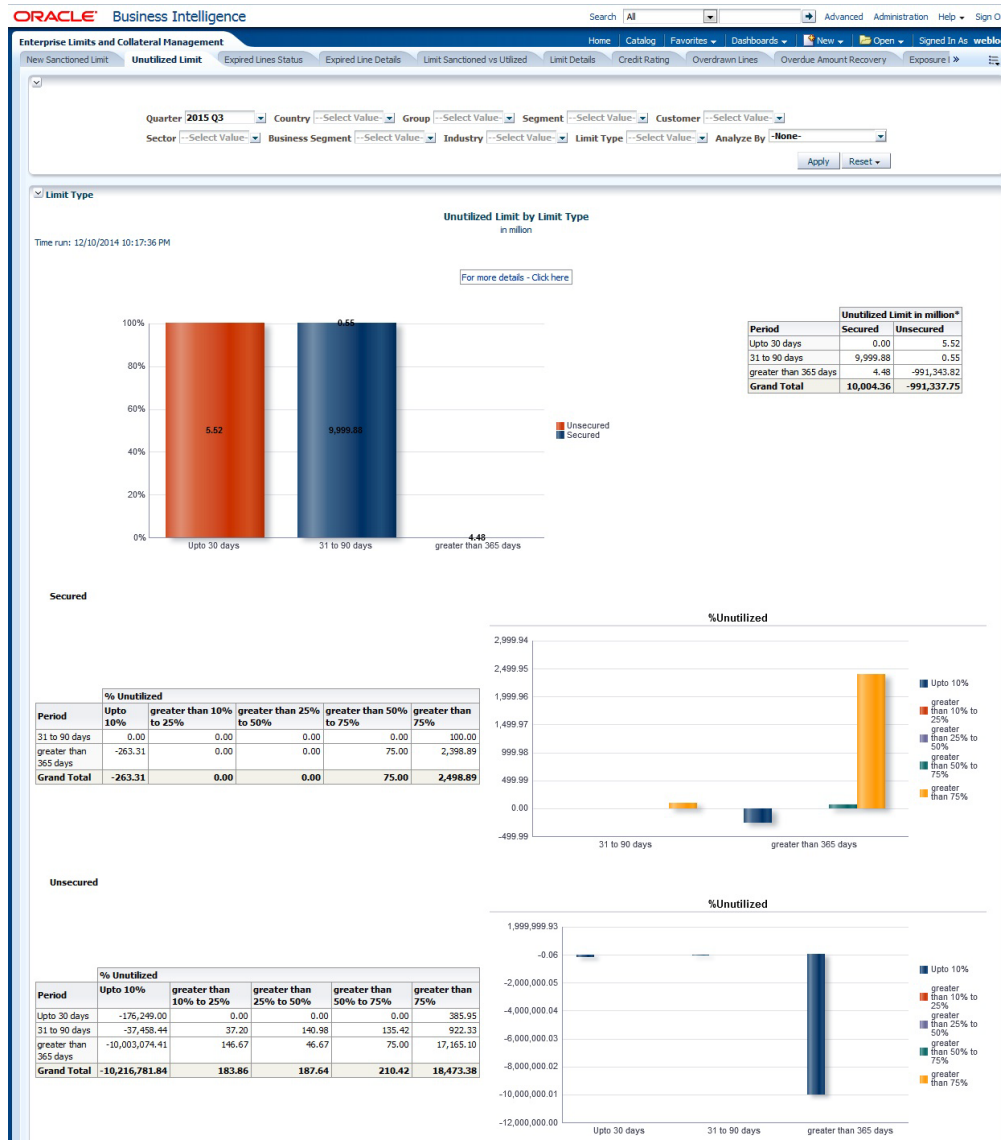
Analyze by Report	Drill down values	Report	Drill down values	
			Unutilized	New Limit Sanctioned by Limit Type - UnSecured - Unutilized - Business Segment
Group	Group Codes and Unclassified	New Limit Sanctioned by Group-Customer		
Liab No	NA			
Industry	Industries and Unclassified	New Limit Sanctioned by Industry Secured & Unsecured	Secured	New Limit Sanctioned by Industry-Secured
			Unsecured	New Limit Sanctioned by Industry-Unsecured

The following actions are supported from this screen:

- Refresh - Click this link to refresh the data in the report
- Print - Click this link to print the report
- Export - Click this link to export the report in a different format

2.4.2 Utilized Limit

The unutilized limit report shows the details of limits that are not utilised:



Analyze By

You can analyse the report by the following parameters.

- Segment
- Country
- Business segment
- Quarter
- Sector
- Limit type
- Group
- Liab Number
- Industry

Select the appropriate dimension from the drop down list and click 'Apply' button. The system displays the details of the unutilised limits analysed based on the selected dimension.

You can also filter the reports based on the following parameters:

- Quarter
- Country
- Group
- Segment
- Customer
- Sector
- Business segment
- Industry
- Limit type

You can drill down to further levels by clicking the respective links, as illustrated below.

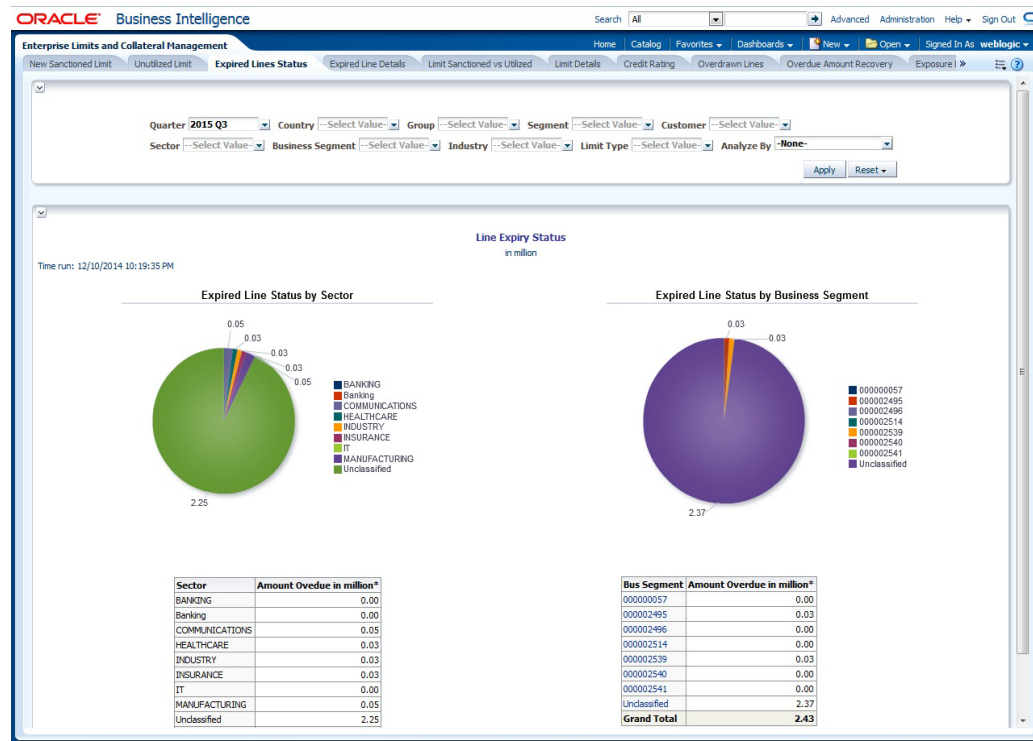
Analyze By Report	Drill Down values	Report	Drill Down Values	Report
Segment	Bank	Unutilized Limit by Segment - Bank		
	Corporate	Unutilized Limit by Segment - Corporate	Group Code and Unclassified	Unutilized Limit by Segment - Corporate - Liability No
	Individual	Unutilized Limit by Segment - Individual		
Country	NA			
Business Segment	NA			
Quarter	NA			
Sector	NA			
Limit Type	For More Details Click Here	Unutilized Limit by Limit Type - Country		
Group	NA			
Liab No	NA			
Industry	NA			

The following actions are supported from this screen:

- Refresh - Click this link to refresh the data in the report
- Print - Click this link to print the report
- Export - Click this link to export the report in a different format

2.4.3 Expired Line Status

This report shows details of lines in expired status



Analyze By

You can analyse the report by the following parameters.

- Segment
- Country
- Business segment
- Quarter
- Sector
- Limit type
- Group
- Liab Number
- Industry

Select the appropriate dimension from the drop down list and click 'Apply' button. The system displays the details of the expired lines analysed based on the selected dimension.

You can also filter the reports based on the following parameters:

- Quarter
- Country
- Group
- Segment
- Customer
- Sector
- Business segment
- Industry

- Limit type

You can drill down to further levels by clicking the respective links, as illustrated below.

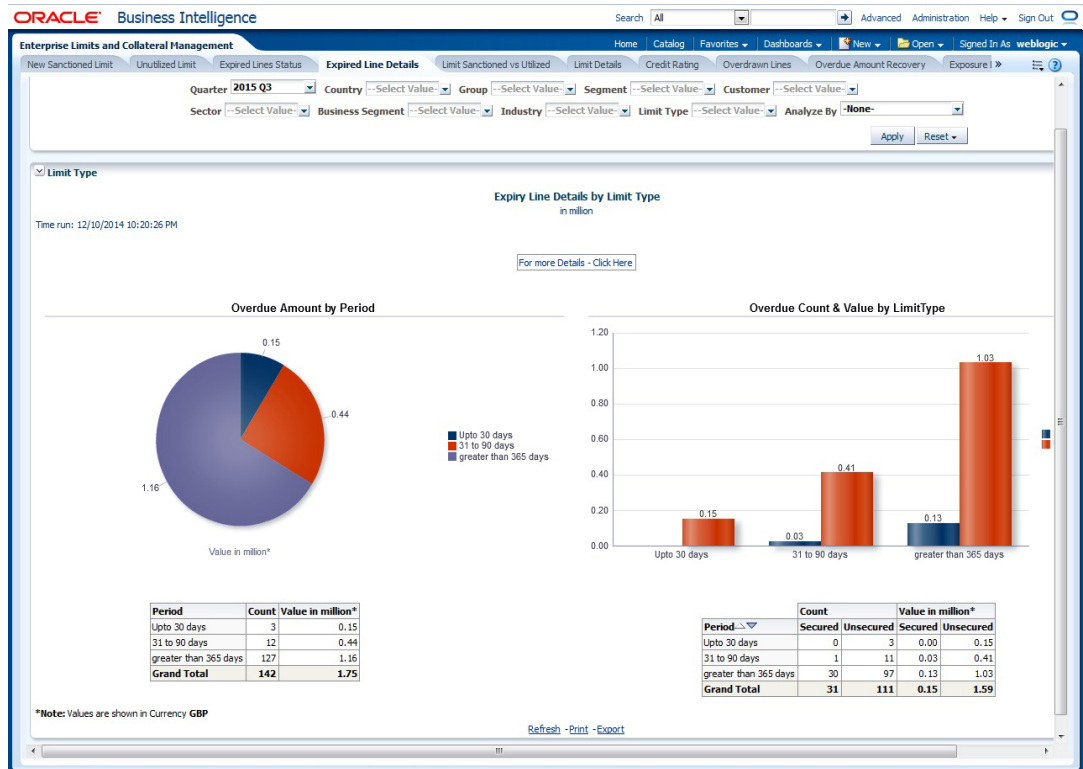
Analyze By Report	Drill Down values	Report	Drill Down Values	Report
Segment	NA			
Country	NA			
Business Segment	List of Business Segments and Unclassified	Line Expiry Status by Business Segment - Details	For more details - Click here	Line Expiry Status by Business Segment - Limit - Details
Quarter	For more details - Click here	Line Expiry Status by Quarter Details		
Sector	NA			
Limit Type	NA			
Group	NA			
Liab No	NA			
Industry	NA			

The following actions are supported from this screen:

- Refresh - Click this link to refresh the data in the report
- Print - Click this link to print the report
- Export - Click this link to export the report in a different format

2.4.4 Expired Line Details

Expired line details report shows the details of expiry lines.



Analyze By

You can analyse the report by the following parameters.

- Segment
- Country
- Business segment
- Quarter
- Sector
- Limit type
- Group
- Liab Number
- Industry

Select the appropriate dimension from the drop down list and click 'Apply' button. The system displays the details of the expired lines analysed based on the selected dimension.

You can also filter the reports based on the following parameters:

- Quarter
- Country
- Group
- Segment
- Customer
- Sector
- Business segment

- Industry
- Limit type

The following actions are supported from this screen:

- Refresh - Click this link to refresh the data in the report
 - Print - Click this link to print the report
 - Export - Click this link to export the report in a different format
- You can view the following details:

You can drill down to further levels by clicking the respective links, as illustrated below.

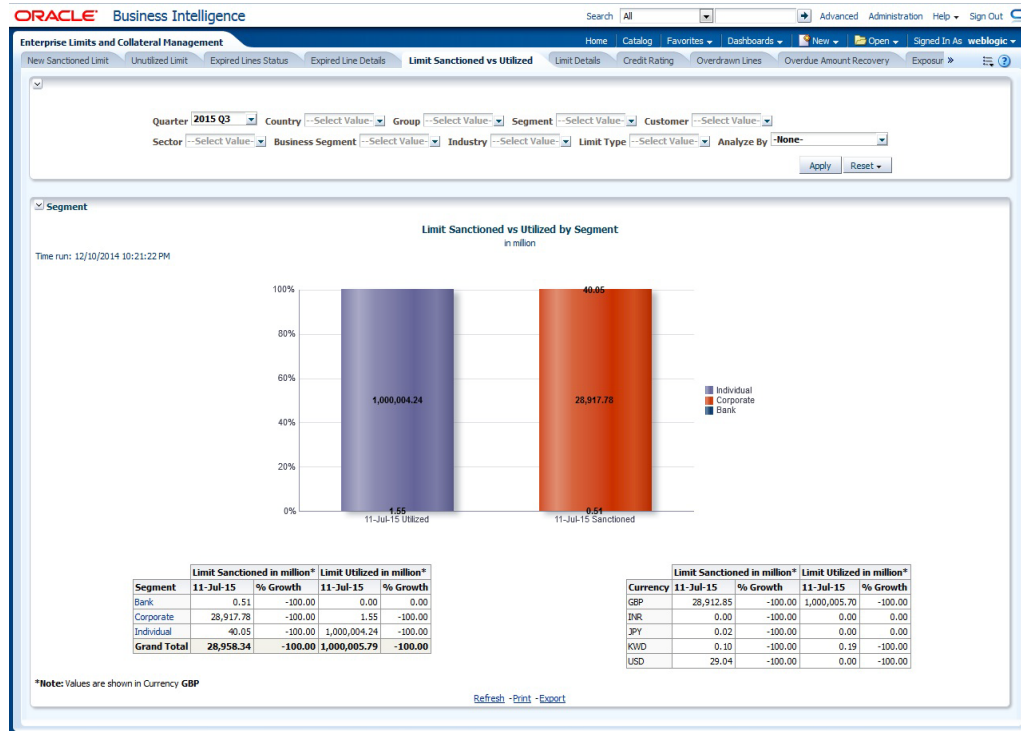
Analyze By Report	Drill Down values	Report
Segment	For more details - Click here	Expiry Line Details by Period - Details
Country	For more details - Click here	Expiry Line Details by Period - Details
Business Segment	For more details - Click here	Expiry Line Details by Period - Details
Quarter	For more details - Click here	Expiry Line Details by Period - Details
Sector	For more details - Click here	Expiry Line Details by Period - Details
Limit Type	For more details - Click here	Expiry Line Details by Period - Details
Group	For more details - Click here	Expiry Line Details by Period - Details
Liab No	For more details - Click here	Expiry Line Details by Period - Details
Industry	For more details - Click here	Expiry Line Details by Period - Details

The following actions are supported from this screen:

- Refresh - Click this link to refresh the data in the report
- Print - Click this link to print the report
- Export - Click this link to export the report in a different format

2.4.5 Limits Sanctioned Vs Utilized

This report shows the details of sanctioned limits and the utilized limits:



Analyze By

You can analyse the report by the following parameters.

- Segment
- Country
- Business segment
- Quarter
- Sector
- Limit type
- Group
- Liab Number
- Industry

Select the appropriate dimension from the drop down list and click 'Apply' button. The system displays the details of the sanctioned and utilized limits based on the selected dimension.

You can also filter the reports based on the following parameters:

- Quarter
- Country
- Group
- Segment
- Customer
- Sector
- Business segment
- Industry

- Limit type

You can drill down to further levels by clicking the respective links, as illustrated below.

Analyze By Report	Drill Down values	Report	Drill Down Values	Report	Drill Down Values	Report
Segment	Bank	Segment - Group - Details	Group Codes and Unclassified	Segment - Group - Customer Details		
	Corporate	Segment - Group - Details	Group Codes and Unclassified	Segment - Group - Customer Details		
	Individual	Segment - Group - Details	Group Codes and Unclassified	Segment - Group - Customer Details		
Country	NA					
Business Segment	For more details Click Here	Business Seg wise Sanc - Utilized Details	Liab No and Unclassified	Business Seg wise Sanc - Utilized Details Report		
Quarter	NA					
Sector	For more Sanctioned details Click here	Sector - Sanctioned Limit - Type Details	List of Sectors and Unclassified	Sector - Sanctioned Limit - Group - Details	List of Groups and Unclassified	Sector - Sanc Limit - Top20 & Others Cust Details
	For more Utilization details Click here	Sector - Utilized Limit - Type Details	List of Sectors and Unclassified	Sector - Utilized Limit - Group - Details	List of Groups and Unclassified	Sector - Util Limit - Top20 & Others Cust Details
Limit Type	NA					
Group	Group Codes and Unclassified	Group - Liability No Details				
Liab No	NA					

Analyze By Report	Drill Down values	Report	Drill Down Values	Report	Drill Down Values	Report
Industry	For more Sanctioned details Click here	Industry - Sanctioned Limit - Type - Details	List of Industries and Unclassified	Industry - Sanctioned Limit - Group - Details	List of Groups and Unclassified	Industry - Sanc Limit - Top20 & Others Cust Details
	For more Utilization details Click here	Industry - Utilized Limit - Type - Details	List of Industries and Unclassified	Industry - Utilized Limit - Group - Details	List of Groups and Unclassified	Industry - Util Limit - Top20 & Others Cust Details

The following actions are supported from this screen:

- Refresh - Click this link to refresh the data in the report
- Print - Click this link to print the report
- Export - Click this link to export the report in a different format

2.4.6 Limit Details

Limit details report shows the details of limits maintained in the system. This report is displayed in table format.

Enterprise Limits and Collateral Management

Search All | Advanced Administration Help | Sign Out

Home Catalog Favorites Dashboards | New | Open | Signed In As weblogic

New Sanctioned Limit | Utilized Limit | Expired Lines Status | Expired Line Details | Limit Sanctioned vs Utilized | **Limit Details** | Credit Rating | Overdrawn Lines | Overdue Amount Recovery | Exposure E

Quarter: 2015 Q3 | Country: --Select Value-- | Group: --Select Value-- | Segment: --Select Value-- | Customer: --Select Value--
Sector: --Select Value-- | Business Segment: --Select Value-- | Industry: --Select Value-- | Limit Type: --Select Value-- | Analyze By: -None-

Apply | Reset

Detailed Limit Report
in million

Time run: 12/10/2014 10:22:16 PM

Segment	Country	Business Segment	Limit Type	Group	Industry	Sector	Quarter	Liab No	Liab Name	Limit Sanctioned in million*	Limit Utilized in million*	Status	
Bank	GB	000002495	Unsecured	Unclassified	ESSERSTEELS	INDUSTRY	2015 Q3	000002538	000002538	0.05	0.00		
		000002539	Unsecured	Unclassified	ESSERSTEELS	INDUSTRY	2015 Q3	000002539	000002539	0.05	0.00		
	000002540	Secured	Unclassified	ESSERSTEELS	INDUSTRY	2015 Q3	000002540	000002540	0.03	0.00			
IN		Unclassified	Unsecured	Unclassified	KVB	Banking	2015 Q3	LIAB01B01	LIAB01B01	0.01	0.00	Good	
		000002488	Unsecured	Unclassified			2015 Q3	000002488	KISHORELIAB	0.08	0.00		
		000002640	Unsecured	Unclassified			2015 Q3	000002640	RKLIAB	0.20	0.00		
US		000002496	Secured	Unclassified	ESSERSTEELS	INDUSTRY	2015 Q3	LIABK203	Bank Liability	0.00	0.00	Good	
		000002495	Unsecured	Unclassified	RELIANCE	HEALTHCARE	2015 Q3	000002542	000002542	0.03	0.00		
		000002541	Unsecured	Unclassified	RELIANCE	HEALTHCARE	2015 Q3	000002541	000002541	0.03	0.00		
Corporate	GB	Unclassified	Secured	Unclassified	Unclassified	Unclassified	2015 Q3	000002492	000002492	3.50	0.00	EXPIRED	
										10,000.00	0.12		
									001000409	001000409	0.01	0.00	
									CORPLIAB	CORPLIAB	0.00	0.00	
									LIAB05	LIAB05	0.01	0.00	
									LIAB06	LIAB06	0.02	0.00	
									SHARCOLT1	SHARCOLT1	0.00	0.00	
									SHARCOLT2	SHARCOLT2	0.05	0.00	
									00000010	00000010	0.50	0.10	EXPIRED
									00000025	00000025	0.01	0.53	
									00000027	00000027	0.00	0.00	
									00000079	00000079	0.02	0.00	
									00000396	00000396	0.02	0.00	
							00000401	00000401	0.02	0.00			
							00000402	00000402	0.02	0.00			
							00000408	00000408	0.02	0.00			

*Note: Values are shown in Currency GBP

Rows 1 - 25

Analyze By

You can analyse the report by the following parameters.

- Segment

- Country
- Business segment
- Quarter
- Sector
- Limit type
- Group
- Liab Number
- Industry

Select the appropriate dimension from the drop down list and click 'Apply' button. The system displays the details of limits based on the selected dimension.

You can also filter the reports based on the following parameters:

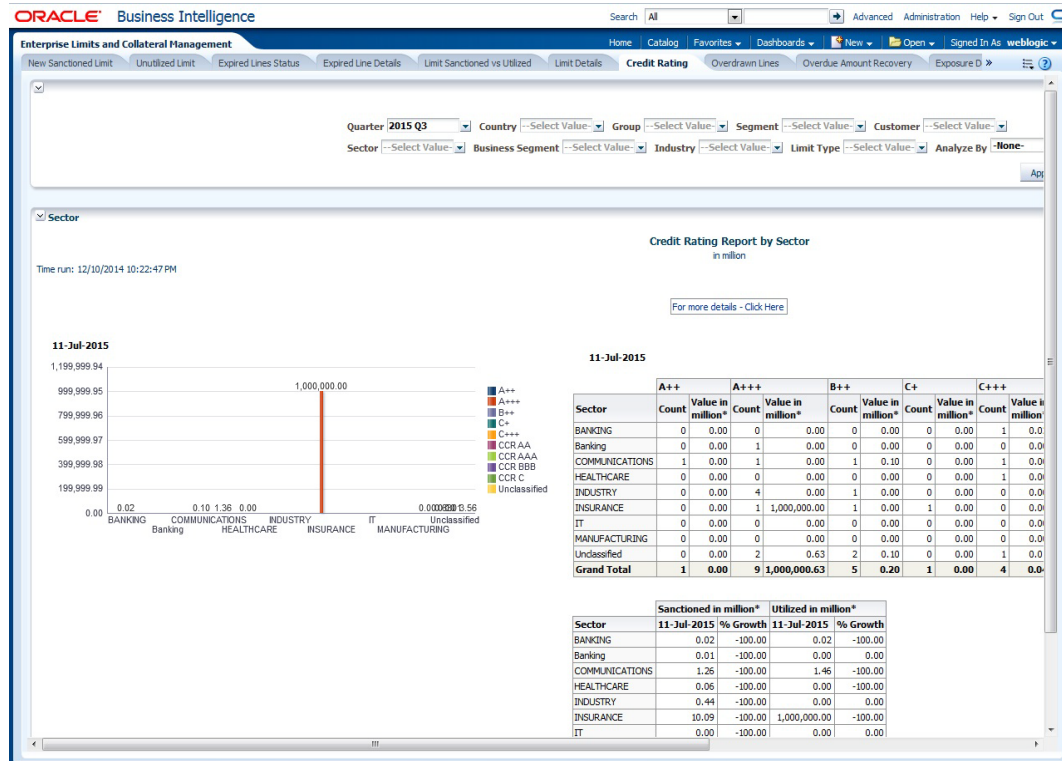
- Quarter
- Country
- Group
- Segment
- Customer
- Sector
- Business segment
- Industry
- Limit type

The following actions are supported from this screen:

- Refresh - Click this link to refresh the data in the report
- Print - Click this link to print the report
- Export - Click this link to export the report in a different format

2.4.7 Credit Rating

Credit rating report shows the details of credits provided to various sectors classified based on the credit rating.



Analyze By

You can analyse the report by the following parameters.

- Segment
- Country
- Business segment
- Quarter
- Sector
- Limit type
- Group
- Liab Number
- Industry

Select the appropriate dimension from the drop down list and click 'Apply' button. The system displays the details of the credit ratings based on the selected dimension.

You can also filter the reports based on the following parameters:

- Quarter
- Country
- Group
- Segment
- Customer
- Sector

- Business segment
- Industry
- Limit type

You can drill down to further levels by clicking the respective links, as illustrated below.

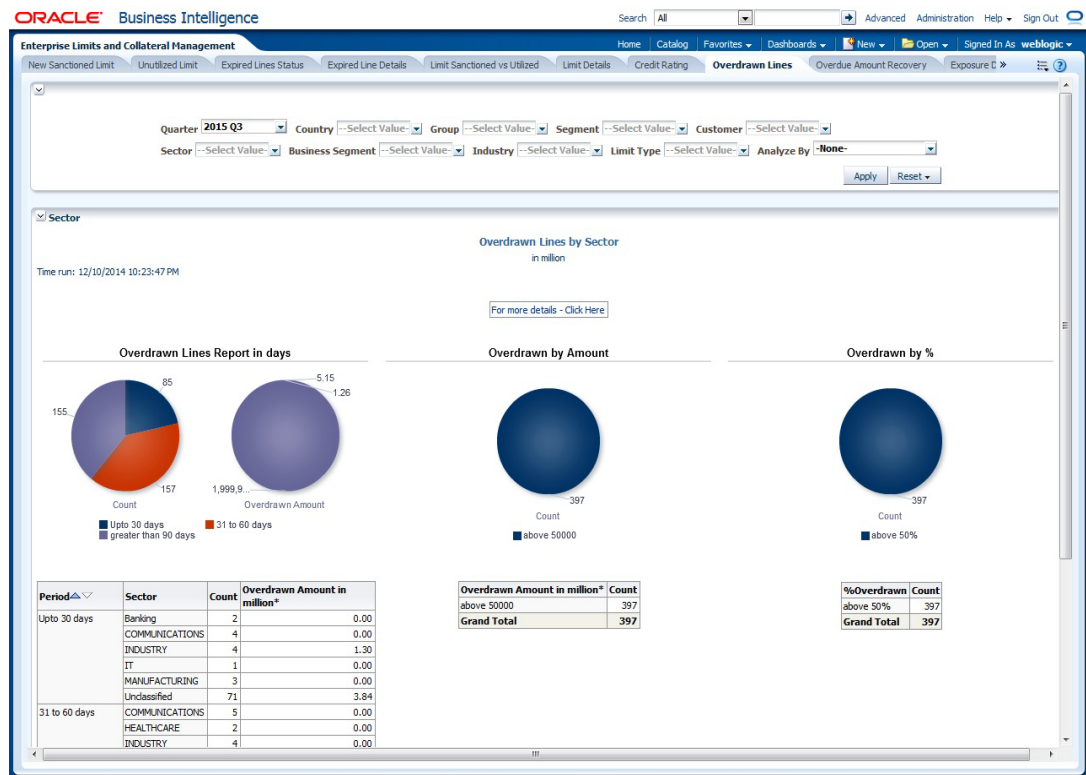
Analyze By Report	Drill Down values	Report
Segment	For more details - Click here	Credit Rating wise Utilization Report
Country	For more details - Click here	Credit Rating wise Utilization Report
Business Segment	For more details - Click here	Credit Rating wise Utilization Report
Quarter	For more details - Click here	Credit Rating wise Utilization Report
Sector	For more details - Click here	Credit Rating wise Utilization Report
Limit Type	For more details - Click here	Credit Rating wise Utilization Report
Group	For more details - Click here	Credit Rating wise Utilization Report
Liab No	For more details - Click here	Credit Rating wise Utilization Report
Industry	For more details - Click here	Credit Rating wise Utilization Report

The following actions are supported from this screen:

- Refresh - Click this link to refresh the data in the report
- Print - Click this link to print the report
- Export - Click this link to export the report in a different format

2.4.8 Overdrawn Lines

This report shows the details of overdrawn lines.



Analyze By

You can analyse the report by the following parameters.

- Segment
- Country
- Business segment
- Quarter
- Sector
- Limit type
- Group
- Liab Number
- Industry

Select the appropriate dimension from the drop down list and click 'Apply' button. The system displays the details of the overdrawn lines based on the selected dimension.

You can also filter the reports based on the following parameters:

- Quarter
- Country
- Group
- Segment
- Customer
- Sector
- Business segment

- Industry
- Limit type

You can drill down to further levels by clicking the respective links, as illustrated below.

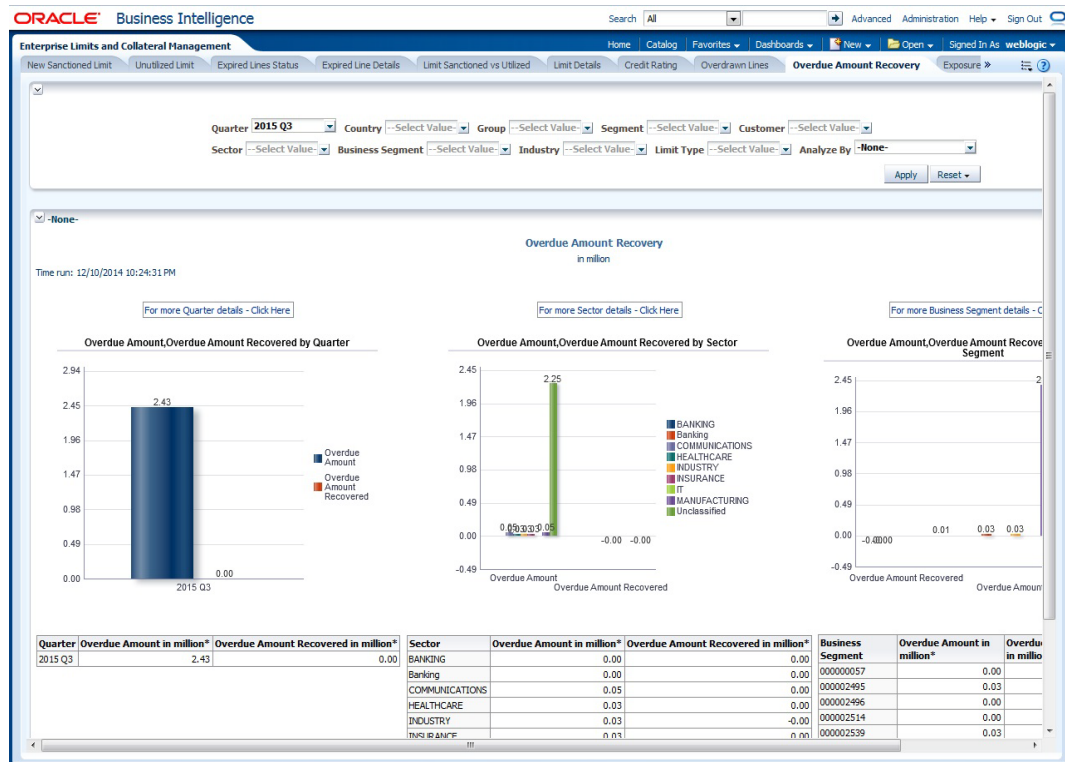
Analyze By Report	Drill Down values	Report
Segment	For more details Click Here	Overdrawn Lines Report Details
Country	For more details Click Here	Overdrawn Lines Report Details
Business Segment	For more details Click Here	Overdrawn Lines Report Details
Quarter	For more details Click Here	Overdrawn Lines Report Details
Sector	For more details Click Here	Overdrawn Lines Report Details
Limit Type	For more details Click Here	Overdrawn Lines Report Details
Group	For more details Click Here	Overdrawn Lines Report Details
Liab No	For more details Click Here	Overdrawn Lines Report Details
Industry	For more details Click Here	Overdrawn Lines Report Details

The following actions are supported from this screen:

- Refresh - Click this link to refresh the data in the report
- Print - Click this link to print the report
- Export - Click this link to export the report in a different format

2.4.9 Overdue Amount Recovery

This report displays the details of overdue amounts and the recovery status.



Analyze By

You can analyse the report by the following parameters.

- Segment
- Country
- Business segment
- Quarter
- Sector
- Limit type
- Group
- Liab Number
- Industry

Select the appropriate dimension from the drop down list and click 'Apply' button. The system displays the recovery details of the overdue amount based on the selected dimension.

You can also filter the reports based on the following parameters:

- Quarter
- Country
- Group
- Segment
- Customer
- Sector
- Business segment

- Industry
- Limit type

You can drill down to further levels by clicking the respective links, as illustrated below.

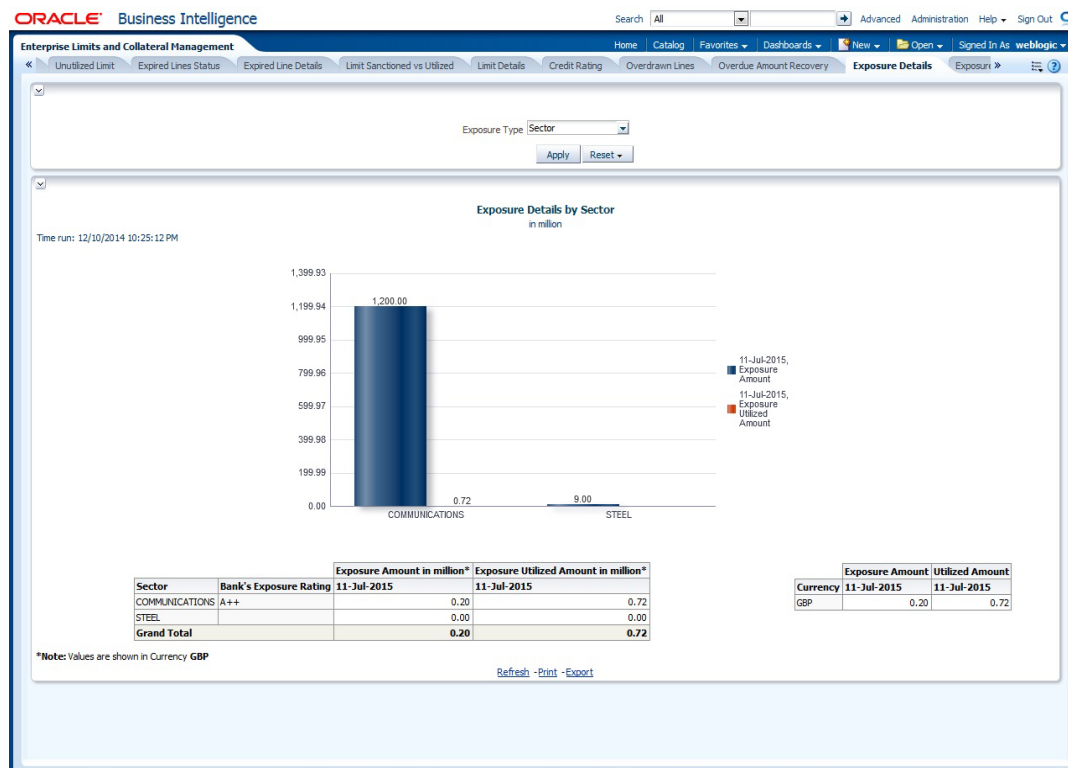
Analyze By Report	Drill Down values	Report	Drill Down Values	Report
Segment	For more details Click Here	Overdue Amount Recovery Details		
Country	For more details Click Here	Overdue Amount Recovery Details		
Business Segment	List of Business Segments and Unclassified	Overdue Amount Recovery by Business Segment Details	For more details Click Here	Overdue Amount Recovery Details
Quarter	List of quarters	Overdue Amount Recovery by Quarter Details	For more details Click Here	Overdue Amount Recovery Details
Sector	List of Sectors and Unclassified	Overdue Amount Recovery by Sector Details	For more details Click Here	Overdue Amount Recovery Details
Limit Type	For more details Click Here	Overdue Amount Recovery Details		
Group	For more details Click Here	Overdue Amount Recovery Details		
Liab No	For more details Click Here	Overdue Amount Recovery Details		
Industry	For more details Click Here	Overdue Amount Recovery Details		

The following actions are supported from this screen:

- Refresh - Click this link to refresh the data in the report
- Print - Click this link to print the report
- Export - Click this link to export the report in a different format

2.4.10 Exposure Details

This report displays the details of exposure.



You can view this report for the following exposure types:

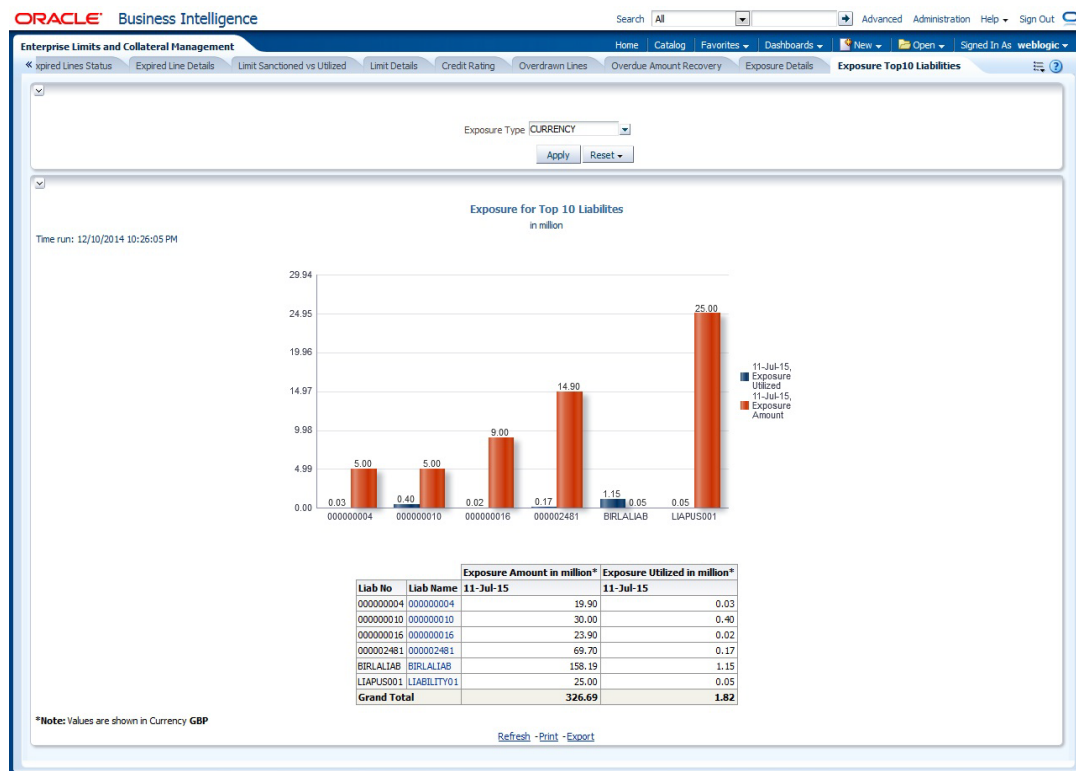
- Sector
- Currency
- Country

The following actions are supported from this screen:

- Refresh - Click this link to refresh the data in the report
- Print - Click this link to print the report
- Export - Click this link to export the report in a different format

2.4.11 Exposure Top 10 Liabilities

This report shows the exposure details for the top ten liabilities in the system.



You can view this report for the following exposure types:

- Country
- Currency
- Sector

You can drill down to further levels by clicking the respective links, as illustrated below.

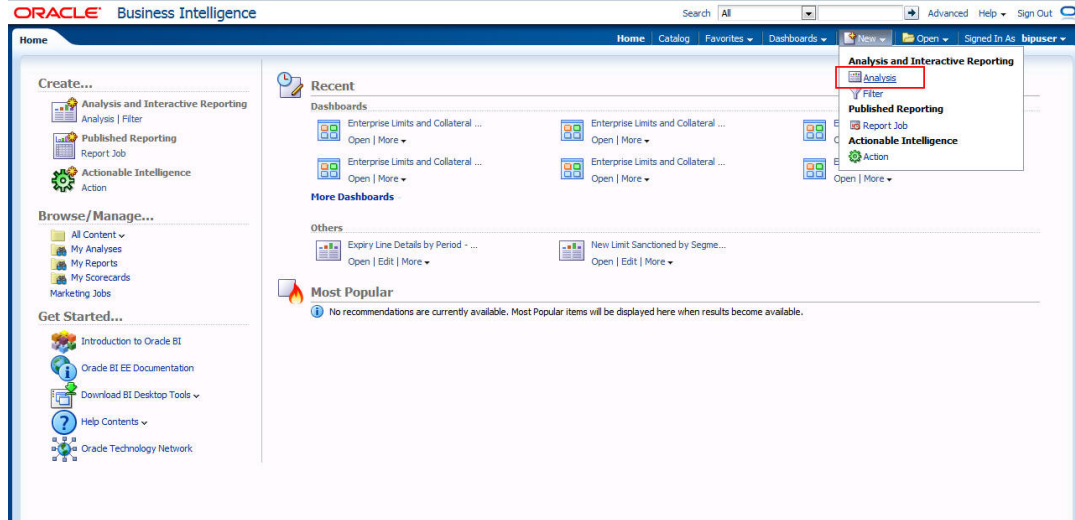
Analyze By Report	Drill Down values	Report
Country	Liab Name	Exposure Top 10 Liabilites Details
Currency	Liab Name	Exposure Top 10 Liabilites Details
Sector	Liab Name	Exposure Top 10 Liabilites Details

The following actions are supported from this screen:

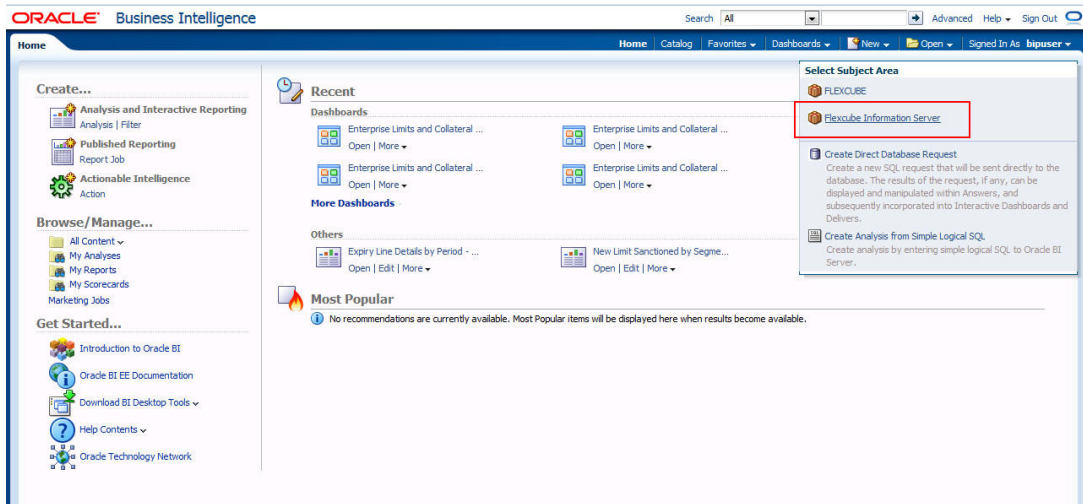
- Refresh - Click this link to refresh the data in the report
- Print - Click this link to print the report
- Export - Click this link to export the report in a different format

2.5 Creating Dynamic Reports

You can create dynamic reports using the Oracle FLEXCUBE Information Server RPD. In order to start with creation of a dynamic report, login to OBIEE system.

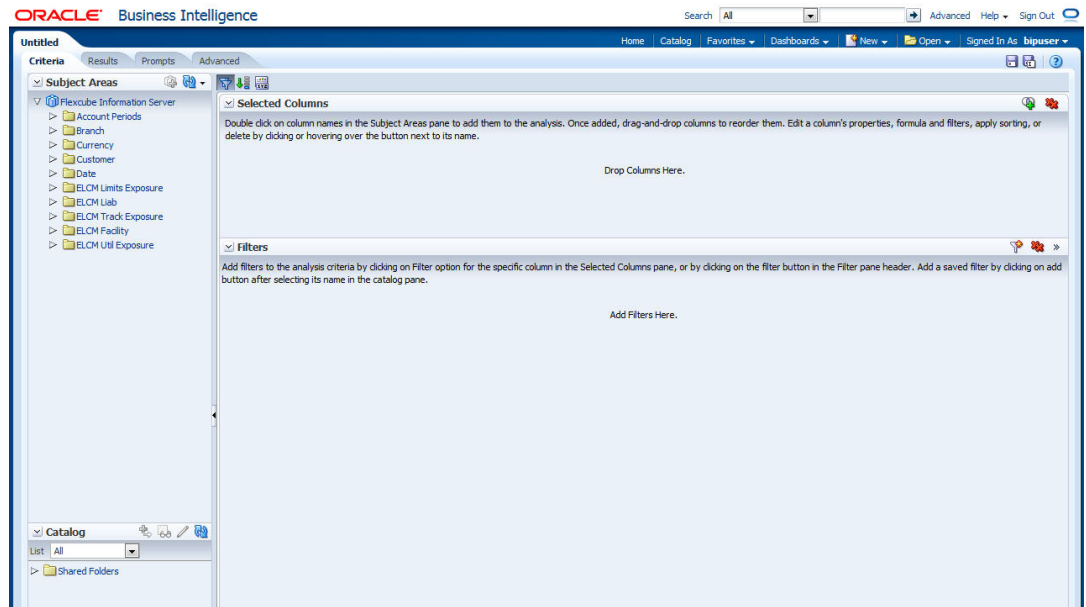


Click 'New' on the toolbar and select 'Analysis'. You will be prompted to select the Subject Area.



Select 'FLEXCUBE Information Server' from the list.

Navigate to 'Criteria' tab.



On the left pane, expand the 'FLEXCUBE Information Server' subject area. You can find the following folders.

Folder	Data Type	Description
Account Periods	Dimensional data	Displays the accounting periods maintained for the bank
Branch	Dimensional data	Displays all the branches maintained for the bank
Currency	Dimensional data	Displays all the currencies maintained for the bank
Customer	Dimensional data	Displays all the customers maintained for the bank.
Date	Dimensional data	Displays all the dates from the start of accounting period to the end of accounting period
ELCM Limits Exposure	Dimensional Data	Displays limits exposure details maintained for the bank
ELCM Liab	Dimensional Data	Displays all the liabilities maintained for the bank
ELCM Track Exposure	Fact Data	Displays tracking details for exposure maintained for the bank
ELCM Facility	Fact Data	Displays facility details maintained for the bank
ELCM Util Exposure	Fact Data	Displays utilization and exposure details

The subject areas and their descriptions are available in the following table:

Folder	Field	Description
Account Periods	Period Code	Code that identifies the period
	Branch Code	Branch code
	Start Date	Start date of the account period
	End Date	End date of the account period
	Financial Cycle	Financial cycle
	Year	Year of the account period
	Half	Half year of the account period
	Quarter	Quarter of the year of account period
	Month	Month of the period code
Branch	Branch Code	Branch code
	Branch Name	Name of the branch
	Branch Address 1	First line of the branch address
	Branch Address 2	Second line of the branch address
	Branch Address 3	Third line of the branch address
	Branch LCY	Local currency of the branch
	Closure Date	Date of closure of the branch
	Country Code	Country code
	Parent Code	Parent branch code
	Parent Name	Parent branch name
	Regional Office Code	Regional office code
	Regional Office Name	Name of the regional office
	Currency	Currency Code
Currency Description		Currency description
Date	Calendar Date	Calendar date, all dates from the start and end of accounting periods are available
	Is Last Qtrday	The last working day of the quarter
	Is Last Monthday	The last working day of the month
	Half Year	Denotes whether it is the first half/second half of the financial year

Folder	Field	Description
	Week Day	Shows whether the day is a weekday/ weekend
	Year Number	The year of the selected calendar date
	Year Q Num	The quarter of the year of the selected calendar date
	Quarter Name	The name of the quarter, i.e. Q1, Q2, Q3 or Q4
	Quarter Number	The quarter number of the calendar date, i.e. 1, 2, 3 or 4
	Month Name	The name of the month
	Month Number	The number that represents the month based on the financial year. Q1 will have 1, 2, 3 or 4, Q2 will have 4, 5, 6 or 7 and so on.
	Day Weekname	The name of the day of the calendar date, i.e. Monday, Tuesday etc.
	Day Yyyymm	The calendar date in Yyyymm format
Customer	Customer No	Customer number
	Customer Name	Name of the customer
	Short Name	Short name of the customer
	Creation Date	Date of customer creation
	Local Branch	Local branch of the customer
	Customer type	Type of customer
	Customer Status	Status of the customer. 'O' indicates 'Open' and 'C' indicates 'Closed'.
	Customer Category	Category to which the customer belong
	Customer Classification	Classification of the customer
	Customer Segment	Segment of the customer
	Sex	Gender of the customer
	Date of Birth	Date of birth of the customer
	Deceased	Whether the customer is deceased or not
	Frozen	Whether the customer details are frozen or not
	Language	Language of the customer

Folder	Field	Description
	Country	Country to which the customer belongs
	Nationality	Nationality of the customer
	Whereabouts Unknown	Whether the whereabouts of the customer is known or not
	Address Line 1	First line of the customer's address
	Address Line 2	Second line of the customer's address
	Address Line 3	Third line of the customer's address
	Address Line 4	Fourth line of the customer's address
	Credit Rating	Credit rating of the customer
	Business Segment Code	Business Segment of the customer
	Industry Code	Industry of the customer
	Sector Code	Sector of the customer
	Group Code	Group of the customer
	Exposure Country	Country for which exposure belongs to
	ELCM Limits Exposure	End Date
Exposure ID		Exposure ID
Exposure Name		Exposure Name
Exposure Rating		Exposure Rating
Exposure Type		Exposure Type
Start Date		Start date
Utilization Type		Type of Utilization
Valid Flag		Valid flag for validation
Exposure Code		Exposure Code
ELCM Liab	Liab Branch	Liability Branch Code
	Liab Ccy	Liability Currency Code
	Liab Name	Liability Name
	Liab No	Liability Number
	Valid Flag	For validation
	Main Liab ID	Main Liability ID

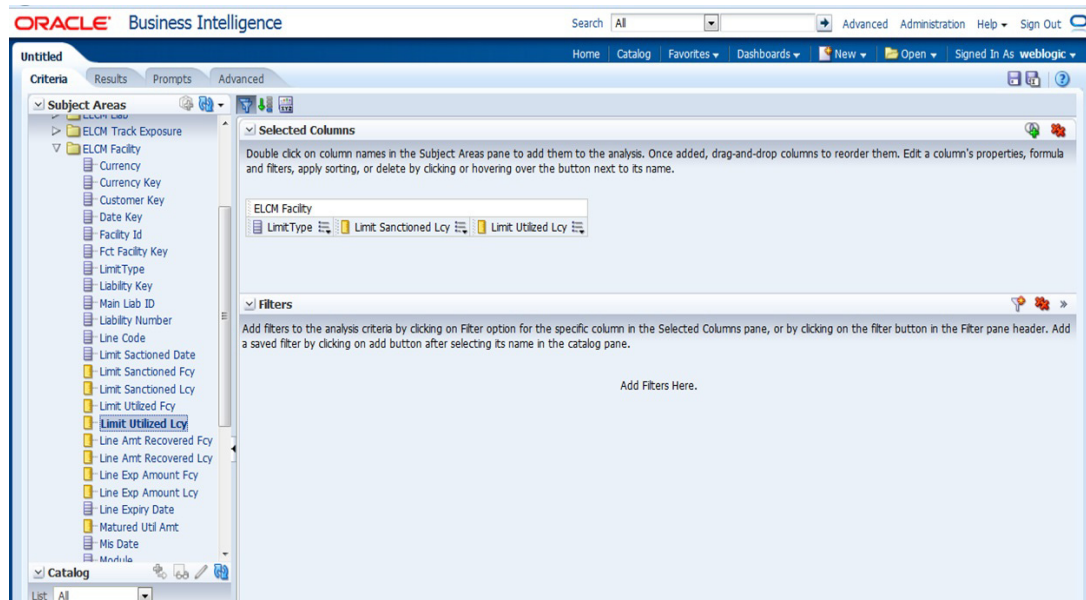
Folder	Field	Description
ELCM Track Exposure	Exposure Currency	Exposure Currency
	Exposure ID	Exposure ID
	Exposure Key	Exposure Key
	MIS Date	MIS Date
	Available Amount FCY	Amount Available in Foreign Currency
	Available Amount LCY	Amount Available in Local Currency
	Exposure Amount FCY	Exposure Amount in Foreign Currency
	Exposure Amount LCY	Exposure Amount in Local Currency
	Utilisation FCY	Utilisation Amount in Foreign Currency
	Utilisation LCY	Utilisation Amount in Local Currency
ELCM Facility	Currency	Currency Code
	Facility ID	ID of each facility
	Limit Type	Type of limit; Secured or unsecured
	Main Liab ID	Main Liability ID
	Liability Number	Liability Number
	Line Code	Identifier for the line
	Limit Sanctioned Date	Date on which limit is sanctioned
	Limit Sanctioned FCY	Limit sanctioned in foreign currency
	Limit Sanctioned LCY	Limit sanctioned in local currency
	Limit Utilized FCY	Limit utilized in foreign currency
	Limit Utilized LCY	Limit utilized in local currency
	Line Amount Recovered FCY	Amount recovered in foreign currency
	Line Amount Recovered LCY	Amount recovered in local currency
	Line Exp Amount FCY	Expired amount in foreign currency

Folder	Field	Description
	Line Exp Amount LCY	Expired amount in local currency
	Line Expiry Date	Date on which line is expired
	Matured Util Amount	Utilized amount matured
	Mis Date	Business Date
	Module	Module
	New Liab Qtr	Flag for the new liability in the quarter
	Overdrawn Amount Fcy	Amount overdrawn in foreign currency
	Overdrawn Amount LCY	Amount overdrawn in local currency
	Overdrawn Date	Date on which amount is overdrawn
	Recovery Date	Date on which amount is recovered
	Revolving Line	Flag to indicate that the line is Revolving
	Util Date	Date on which amount is utilized
	Status	Line status
	Unutilized Limit LCY	Amount not utilized in local currency
	% Unutilized	Percentage of unutilization
	Prev Recovery Amount LCY	Amount recovered on previous date in local currency
ELCM Util Exposure	Available Amount FCY	Available amount in foreign currency
	Available Amount LCY	Available amount in local currency
	Exposure Amount FCY	Exposure amount in foreign currency
	Exposure Amount LCY	Exposure amount in foreign currency
	Exposure ID	Exposure ID
	Utilization FCY	Utilization in foreign currency
	Utilization LCY	Utilization in local currency
	Exch Rate	Exchange rate
	Exp Ccy	Exposure currency

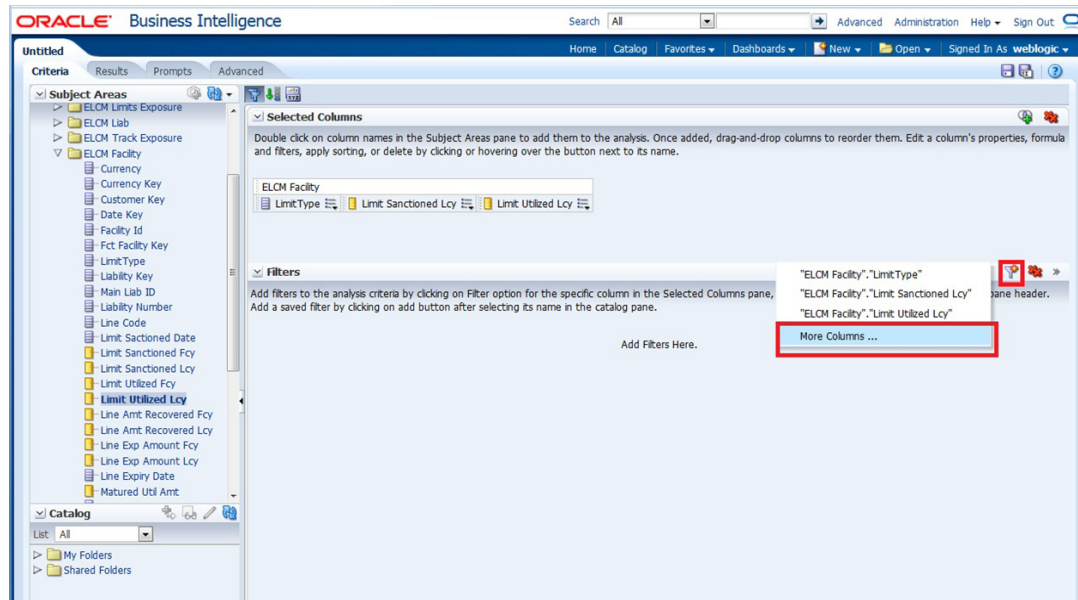
Folder	Field	Description
	Liab ID	Liability ID
	Main Liab ID	Main Liability ID
	Util Amt	Utilization Amount
	Util Ccy	Utilization Currency
	Util ID	Utilization ID
	Liab Name	Liability Name
	Liab No	Liability Number
	Exp Util Fcy	Liability Number
	Exp Util Lcy	Exposure utilized in local currency
	Mis Date	Business Date
	Cparty Appetite FCY	Counterparty appetite in foreign currency
	Cparty Appetite LCY	Counterparty appetite in local currency

The subject areas that you select for a particular report decide the data that needs to be taken for generating the report. You can expand the folders mentioned above and select the columns that are required in the report.

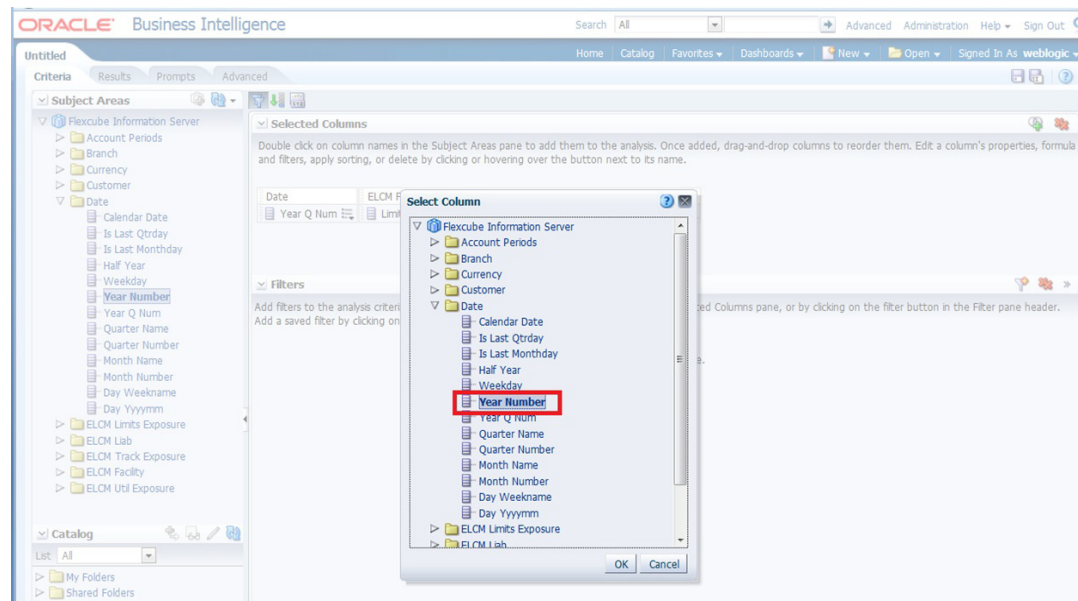
Double-click a column name to add it to the report. The selected columns are displayed on the screen.



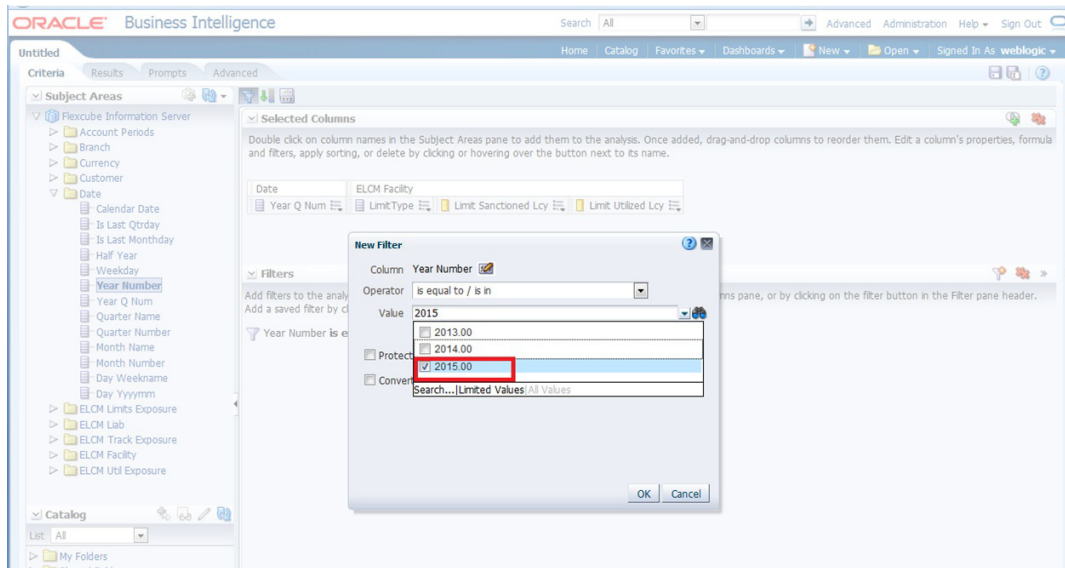
In order to add filters to the report, click the 'Filter' icon.



Click 'Filter' icon and select 'More Columns' to select the filters that you need to apply.

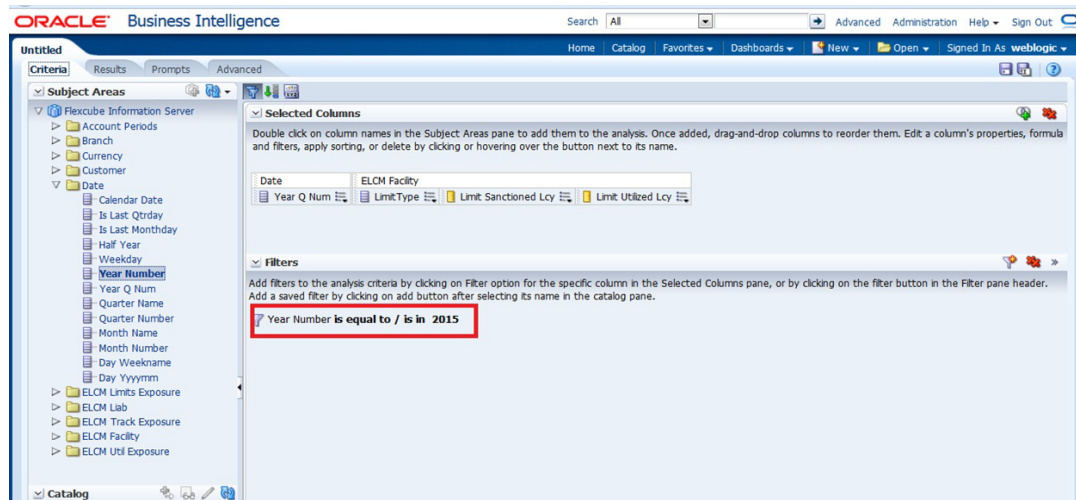


Select the required column and click 'OK' button. You will see the 'New Filter' window.

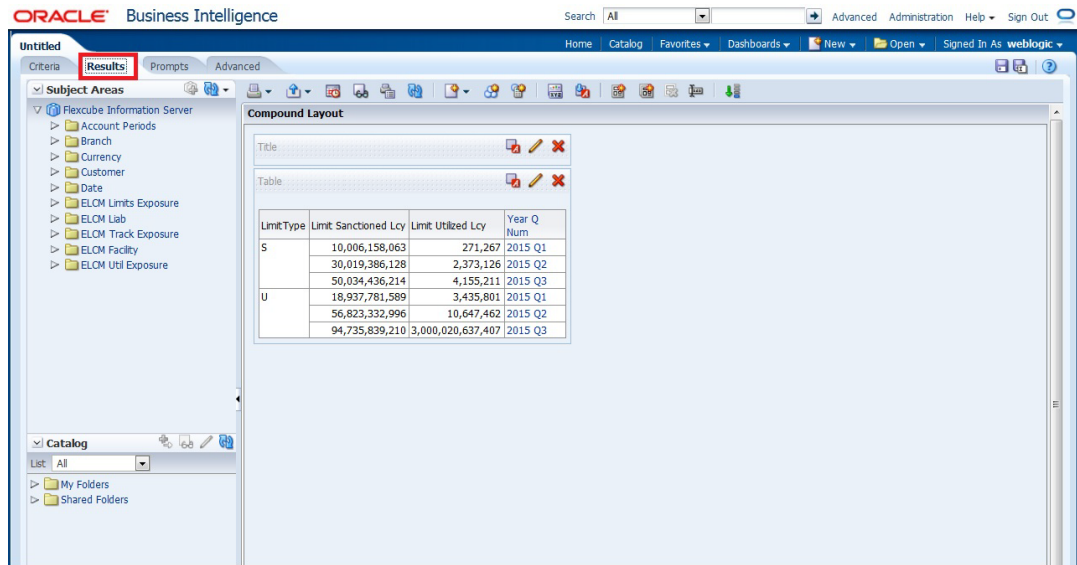


Select the operator and value. Click 'OK' button to add the filter. You can add more filters in the same manner.

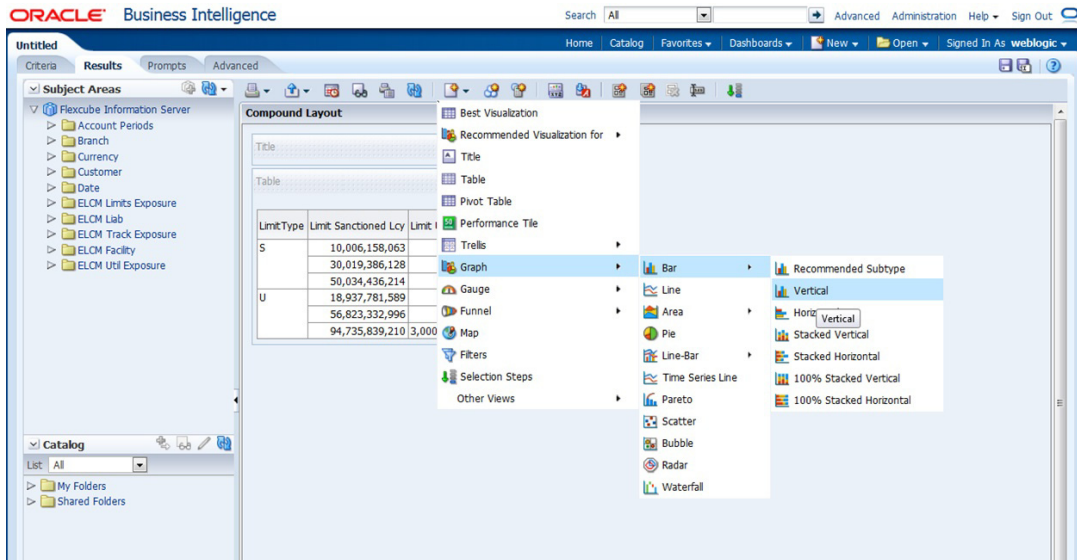
The 'Filters' section of the screen displays all the selected filters.



Once you have added the filters and done the required edits, click 'Results' tab.

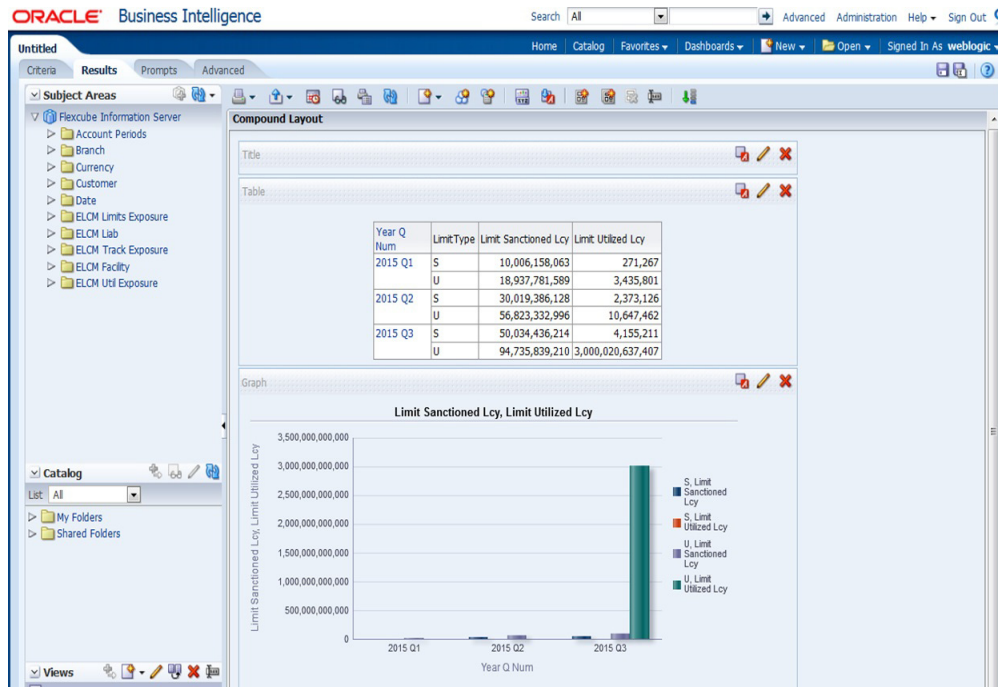


From this tab, you can add graphical representation of the data by using the new view button.



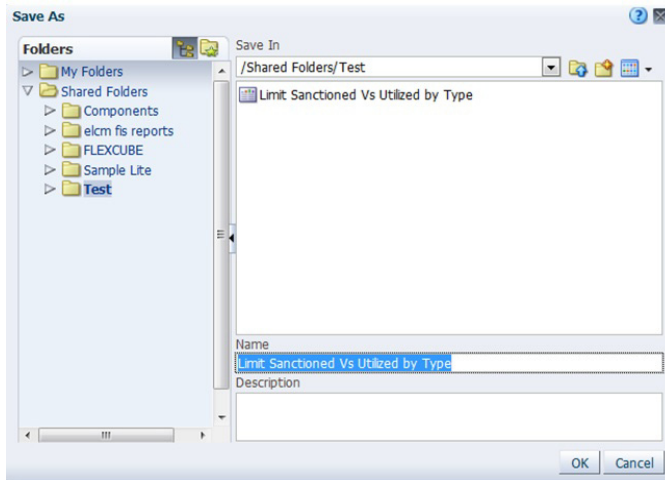
Select the type of graphical representation that you need to add.

OBIEE displays the graph in the result area.



You can drag and drop the items in the result and rearrange the display. If you want to edit the properties of the graph, click Edit icon on the graph item toolbar.

Once the changes are made, click Save icon to save the report that you have created. OBIEE prompts you to specify the name of the report to save



Give an appropriate name to the report and click 'OK' button to save it.

You may also add this dynamic report to a dashboard in OBIEE.

For details on creating dashboards and adding reports to dashboard, refer to the documentation of Oracle Business Intelligence Enterprise Edition.

3. Function ID Glossary

R
RPDDTT2-2

RPDSCH 2-5