

Oracle Financial Services Retail Performance Analytics

OBIEE Deployment Guide

Release 8.0.5.0.5

December 2020

ORACLE
Financial Services

OFS Retail Performance Analytics OBIEE Deployment Guide

Copyright © 2021 Oracle and/or its affiliates. All rights reserved.

This software and related documentation are provided under a license agreement containing restrictions on use and disclosure and are protected by intellectual property laws. Except as expressly permitted in your license agreement or allowed by law, you may not use, copy, reproduce, translate, broadcast, modify, license, transmit, distribute, exhibit, perform, publish, or display any part, in any form, or by any means. Reverse engineering, disassembly, or decompilation of this software, unless required by law for interoperability, is prohibited.

The information contained herein is subject to change without notice and is not warranted to be error-free. If you find any errors, please report them to us in writing.

If this is software or related documentation that is delivered to the U.S. Government or anyone licensing it on behalf of the U.S. Government, then the following notice is applicable.

U.S. GOVERNMENT END USERS: Oracle programs, including any operating system, integrated software, any programs installed on the hardware, and/or documentation, delivered to U.S. Government end users are “commercial computer software” pursuant to the applicable Federal Acquisition Regulation and agency-specific supplemental regulations. As such, use, duplication, disclosure, modification, and adaptation of the programs, including any operating system, integrated software, any programs installed on the hardware, and/or documentation, shall be subject to license terms and license restrictions applicable to the programs. No other rights are granted to the U.S. Government.

This software or hardware is developed for general use in a variety of information management applications. It is not developed or intended for use in any inherently dangerous applications, including applications that may create a risk of personal injury. If you use this software or hardware in dangerous applications, then you shall be responsible to take all appropriate fail-safe, backup, redundancy, and other measures to ensure its safe use. Oracle Corporation and its affiliates disclaim any liability for any damages caused by use of this software or hardware in dangerous applications.

Oracle and Java are registered trademarks of Oracle and/or its affiliates. Other names may be trademarks of their respective owners.

Intel and Intel Xeon are trademarks or registered trademarks of Intel Corporation. All SPARC trademarks are used under license and are trademarks or registered trademarks of SPARC International, Inc. AMD, Opteron, the AMD logo, and the AMD Opteron logo are trademarks or registered trademarks of Advanced Micro Devices. UNIX is a registered trademark of The Open Group.

This software or hardware and documentation may provide access to or information about content, products, and services from third parties. Oracle Corporation and its affiliates are not responsible for and expressly disclaim all warranties of any kind with respect to third-party content, products, and services unless otherwise set forth in an applicable agreement between you and Oracle. Oracle Corporation and its affiliates will not be responsible for any loss, costs, or damages incurred due to your access to or use of third-party content, products, or services, except as set forth in an applicable agreement between you and Oracle.

For information on third party licenses, click [here](#).

Document Control

Version Number	Revision Date	Change Log
1.0	October 2020	Created the document with instructions for deploying the OFS RPA Report Analytics for the release 8.0.5.0.3.

Table of Contents

- 1 Data Visibility 5**
 - 1.1 Creating OBIEE Roles 5
 - 1.2 Data Population as per Visibility Changes 9
- 2 Deploying OFS Retail Performance Analytics Report Analytics 10**
 - 2.1 Deploying OFS RPA RPD File..... 10
 - 2.2 Deploying OFS RPA Catalog Files 10
- 3 Post-Installation Steps 12**
- 4 Deploying D3 on OBIEE Server..... 14**

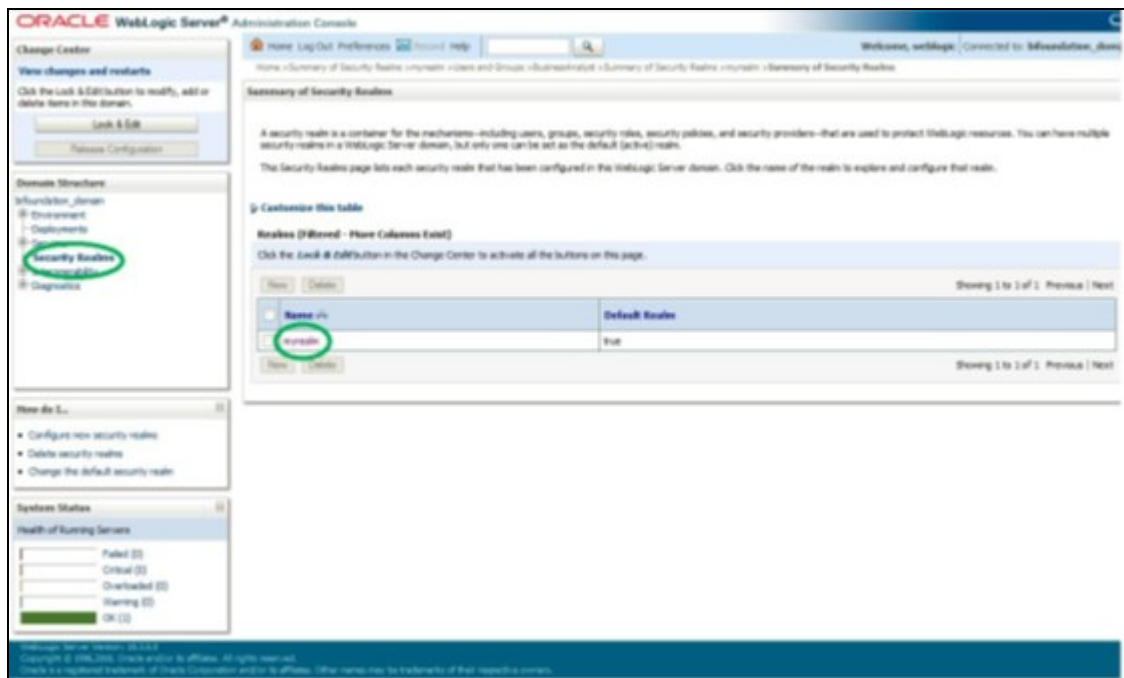
1 Data Visibility

This has been implemented with the set of tables and OBIEE roles. Roles Created in OBIEE is to restrict data based on Manager Hierarchy.

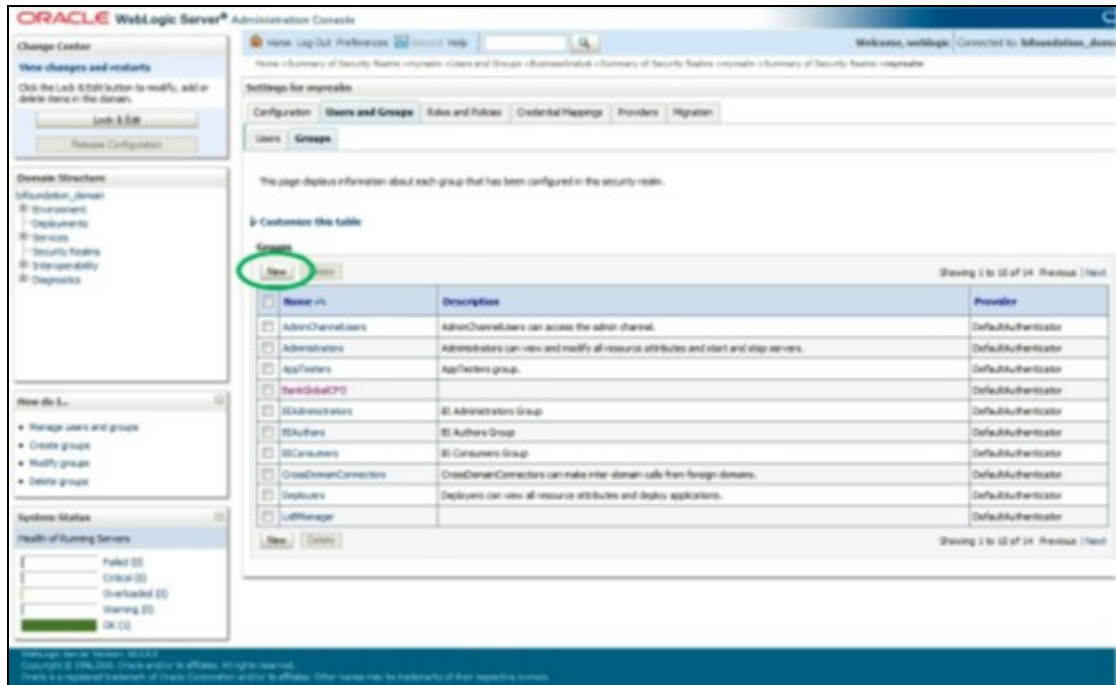
1.1 Creating OBIEE Roles

To accomplish these, follow these steps:

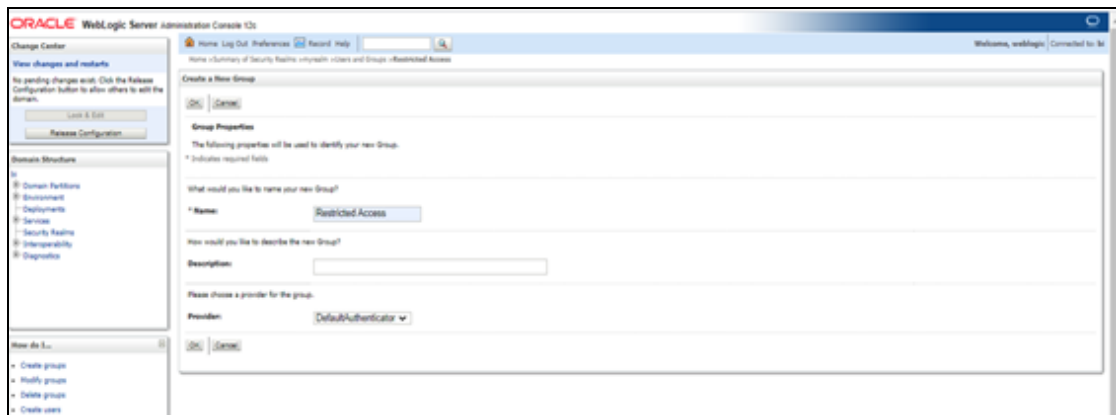
1. Open Admin Console of OBIEE.
2. Click on **Security Realms** under Domain Structure.
3. Click on **myrealm** under Realms.



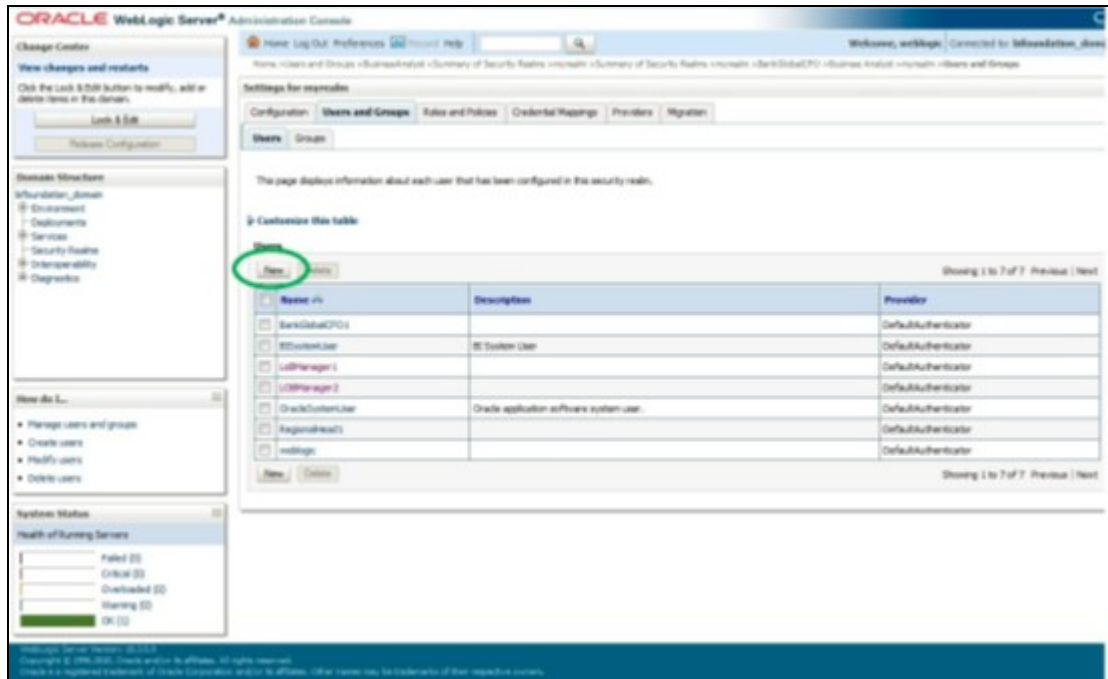
4. Click on **Groups** tab of **User and Groups**.



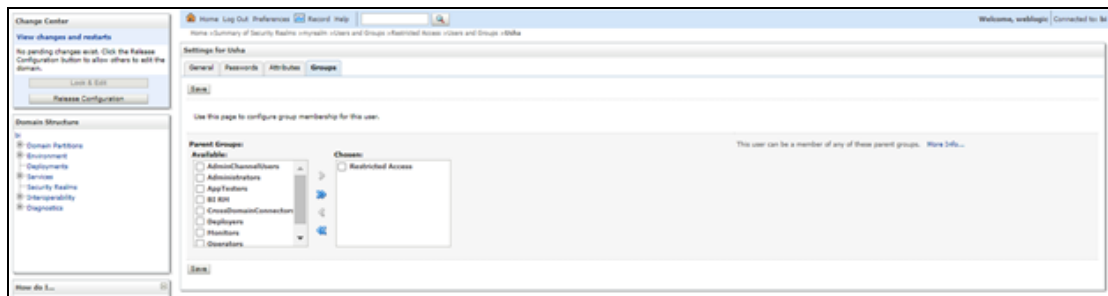
5. Click on **New** and create new user group as 'Restricted Access'.



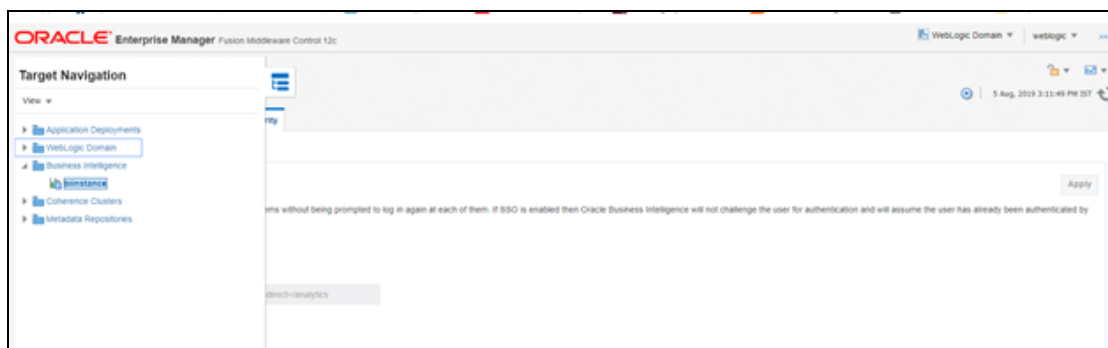
6. Create a new user under **Users** tab of **Users and Groups**.



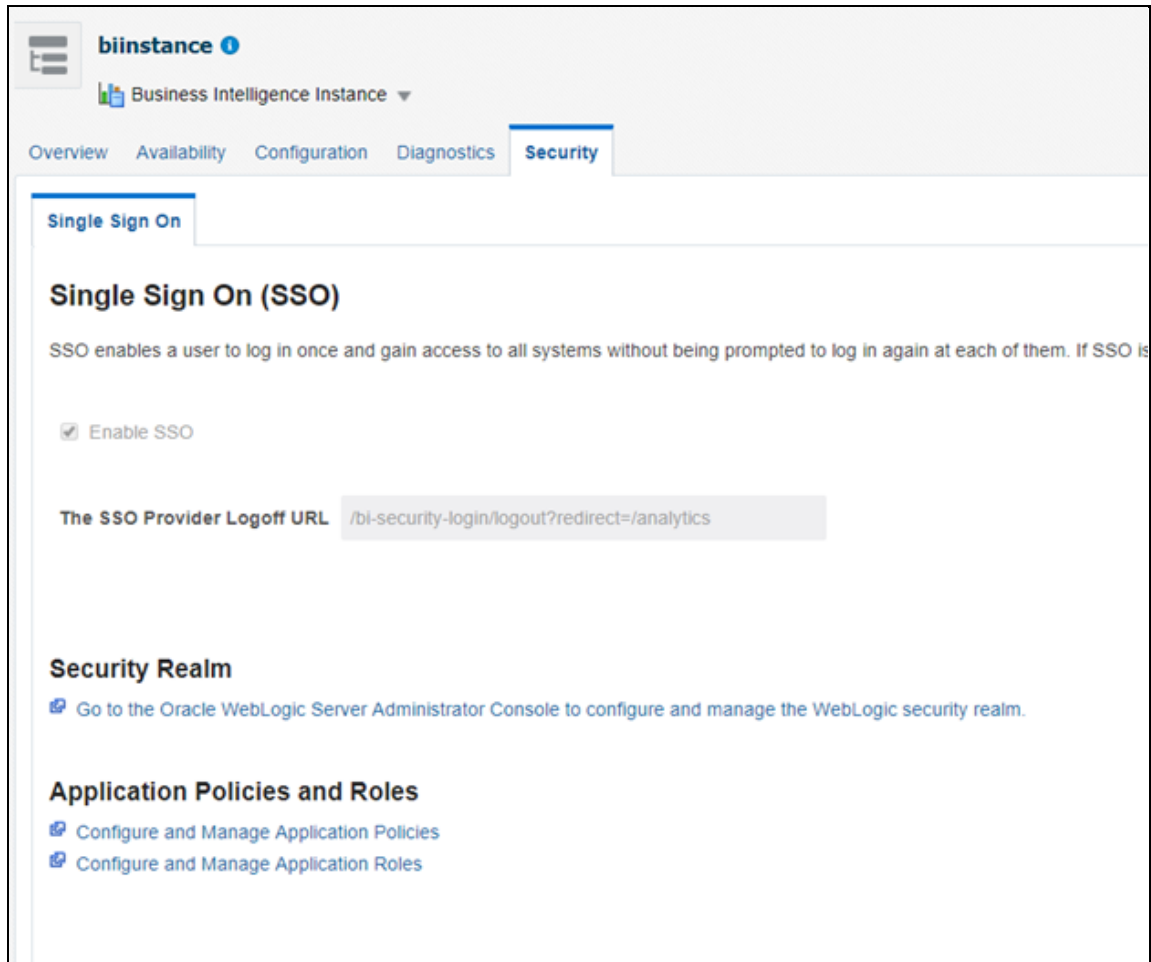
7. Map the newly created users to 'Restricted Access' group, which need Data Visibility.



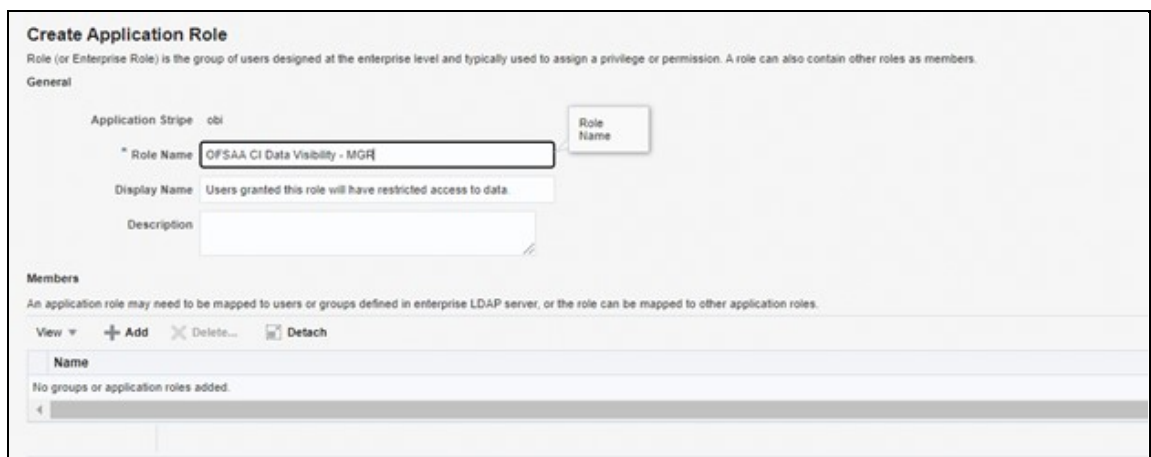
8. Close the Admin Console of OBIEE.
9. Open Enterprise Manager of OBIEE.
10. Click on **biinstance** under Business Intelligence.



11. Click on **Security** under **biinstance**.



12. Click on **Configure and Manage Application Roles** to create Application Roles.
13. Click on **Create** and name as **OFSAA CI Data Visibility - MGR** role . Ensure to use the same name as it is referenced in RPD failed to do this should have access to all reports data.



14. Map the user group, which need data visibility to the **OFSAA CI Data Visibility – MGR**.

Application Roles

Application roles are the roles used by security aware applications that are specific to the application. These roles are seeded by applications in single global policy store when the applications are registered. These are also applied to the application.

Policy Store Provider

Search

Enter search keyword for role name to query roles defined by this application. Use application stripe to search if application uses a stripe that is different from application name.

Application Stripe: obi

Role Name: Starts With

View | Create... | Create Like... | Edit... | Delete...

Role Name	Display Name	Description
BIServiceAdministrator	BI Service Administrator	This role confers privileges required to administer the sample application.
BIContentAuthor	BI Content Author	Users with this role can create most types of content.
BIConsumer	BI Consumer	Users granted this role can consume content but are restricted in what they can create.
OFSAA CI Data Visibility - MGR	Users granted this role will have restric...	

Membership for OFSAA CI Data Visibility - MGR

Principal	Display Name	Type	Description
Restricted Access	Restricted Access	Group	Restricted access to data

1.2 Data Population as per Visibility Changes

- **FSI_M_USER:** This table stores all the users that have access to OBIEE. The user id in this table must match the user's login id of OBIEE.
- **FSI_M_USER_MANAER_MAP:** This table needs only those users details who need Restricted Access. The V_USERNAME has to be inserted with the login username created in OBIEE. V_MANGER_CODE has to be inserted with the manager code of the corresponding user from DIM_MANAGEMENT table. V_USER_TYPE will always be updated as 'R' which denotes Restricted Access. Fail to update this table may end up with report errors.

NOTE

Users insertion in FSI_M_USER and FSI_M_USER_MANAGER_MAP has to be done directly into the table. For example, in presence of Single Signon System, these tables need to be loaded with data from single signon system directly.

2 Deploying OFS Retail Performance Analytics Report Analytics

The deployment of OFS Retail Performance Analytics (OFS RPA) Report Analytics involves the following tasks:

- [Deploying OFS RPA RPD File](#)
- [Deploying OFS RPA Catalog Files](#)

2.1 Deploying OFS RPA RPD File

To deploy the RPD file, follow these steps:

1. Copy the RPD file from the following location for the OFS RPA application.

Table 1: RPD File

Application	File Name	Location
RPA	OFSAA_Analytics.rpd	\$FIC_HOME/OFS_RPA_DASHBOARDS/12.2.1.4.0/datamodel

2. Paste the copied RPD file in the Windows machine where the OBIEE Windows Administration client is installed and deployed.
3. Open the RPD file online with the default password. The default password is Admin123.
4. In the OBIEE Windows Administration client, from the **File** menu, select **Save**.
5. Click **Yes** in the dialog box, **Do you want to check global consistency?**
6. Click **OK** to acknowledge the message, *Consistency check didn't find any errors, warning, or best practices violations.*

You can ignore the warnings on the consistency check.

2.2 Deploying OFS RPA Catalog Files

To deploy the Catalog files, follow these steps:

1. Copy the Catalog files from the following locations for the OFS RPA application.

Table 2: Catalog Files

Application	File Name	Location
RPA	OFSAA_Analytics.catalog	\$FIC_HOME/OFS_RPA_DASHBOARDS/12.2.1.4.0/content/catalog
RPA	OFSAA_Analytics_RPA.catalog	\$FIC_HOME/OFS_RPA_DASHBOARDS/12.2.1.4.0/content/catalog

2. Paste the copied catalog files to a local folder.

3. Open the analytics OBIEE URL-(<http://<ipaddress>:<port>/analytics>) and login with your server credentials.
4. Click the **Catalog** link available on the top right corner.
5. Click **Shared Folders** and then click **Un-Archive**.
6. Browse the path where catalog files are copied in the local folder. Select a file and click **Open**. Then click **OK**. Repeat this for the remaining catalog files.
7. Click any of the **Dashboards** and verify if all the reports are available.

3 Post-Installation Steps

After successfully deploying the RPD and Catalog files, perform the following steps:

1. Apply the patch **Bundle Patch** for OBIEE 12.2.1.4.0. See the **Readme** packaged with the patch for further instructions on how to install the patch. See the Doc ID [2070465.1](#) for more information about the bundle patch.
2. Do the following changes in the `instanceconfig.xml` file:
 - a. Backup and edit the `instanceconfig.xml` file located at:


```
$ORACLE_HOME/user_projects/domains/bi/config/fmwconfig/biconfig/OBIPS
```

Table 3: Tags and Changes for instanceconfig.xml File

Tag to be changed or added	Changes
Change the following tag: <Views>	<pre><Charts> <DefaultWebImageType>flash</DefaultWebImageType> <MaxVisibleColumns>10000</MaxVisibleColumns> <MaxVisiblePages>600000</MaxVisiblePages> <MaxVisibleRows>900000</MaxVisibleRows> <MaxVisibleSections>600000</MaxVisibleSections> <JavaHostReadLimitInKB>8192</JavaHostReadLimitInKB> </Charts> <Cube> <CubeMaxRecords>9999999</CubeMaxRecords> <CubeMaxPopulatedCells>999999999</CubeMaxPopulatedCells> </Cube></pre>
Change the following tag: <Security>	<pre><Security> <CheckUrlFreshness>>false</CheckUrlFreshness> <EnableSavingContentWithHTML>>true</EnableSavingContentWithHTML> </Security></pre>
Add the following tag: <ServerInstance>	<pre><Prompts> <MaxDropDownValues>256</MaxDropDownValues> <ResultRowLimit>65000</ResultRowLimit> <AutoApplyDashboardPromptValues>>true</AutoApplyDashboardPromptValues> <AutoSearchPromptDialogBox>>true</AutoSearchPromptDialogBox> <AutoCompletePromptDropDowns> <SupportAutoComplete>>true</SupportAutoComplete> <CaseInsensitive>>true</CaseInsensitive> <MatchingLevel>MatchAll</MatchingLevel> <ResultsLimit>50</ResultsLimit> </AutoCompletePromptDropDowns> <ShowNullValueWhenColumnIsNullable>never</ShowNullValueWhenColumnIsNullable> </Prompts></pre>

- b.** Save and close the file.
 - c.** Restart the presentation server for the changes to take effect.
- 3.** Do the following changes in the `NQSSConfig.INI` file.

Evaluate function is used in filters of many reports. To support the evaluation function in reports, the value of `EVALUATE_SUPPORT_LEVEL` must be set as **2** instead of **0** in the `NQSSConfig.INI` file of the OBIEE server present in the `$ORACLE_HOME/user_projects/domains/bi/config/fmwconfig/biconfig/OBIS` directory.

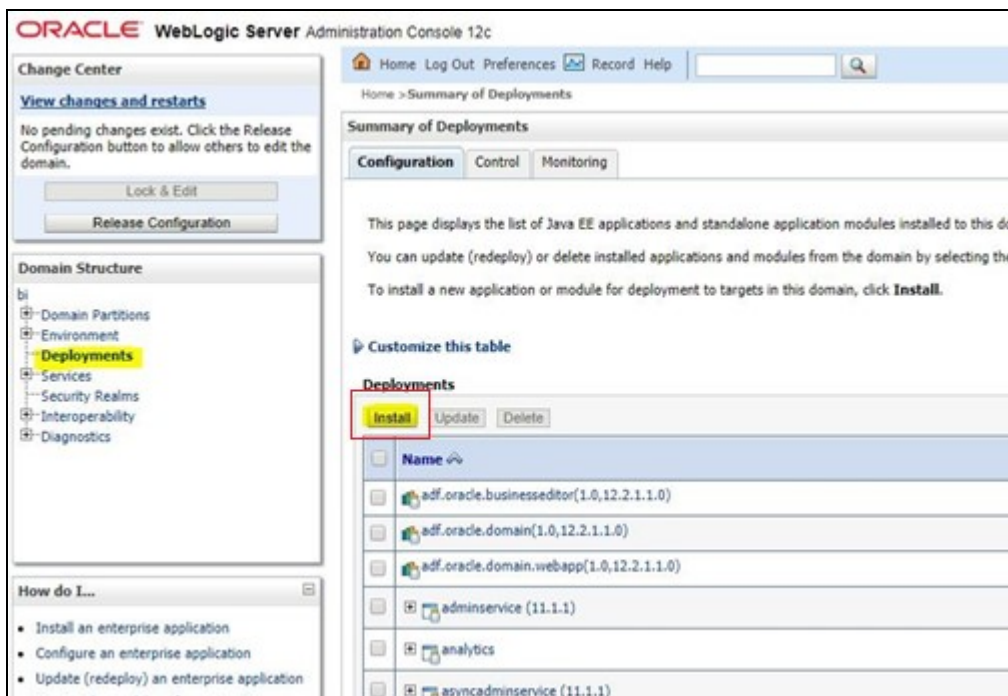
4 Deploying D3 on OBIEE Server

This section provides detailed steps to install and configure D3, a visualization framework, which is used in a few reports of the OFS RPA application.

To deploy the D3 in the OBIEE server, follow these steps:

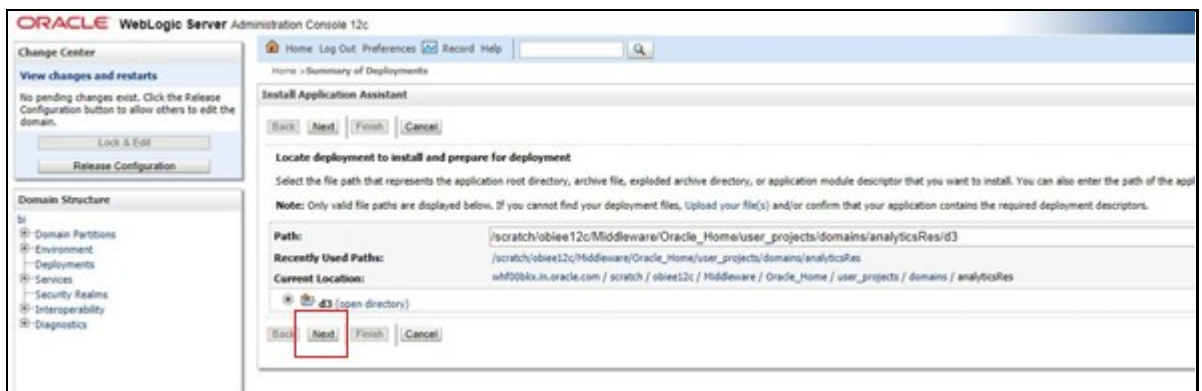
1. Copy the `analyticsRes` folder from `$FIC_HOME/OFS_RPA_DASHBOARDS` directory to OBIEE Server at the following location:
`$ORACLE_HOME/user_projects/domains/`
2. Log in to the WebLogic server, navigate to **Deployments** in your **Domain Structure**, and then click **Install**.

Figure 1: WebLogic Administration Console



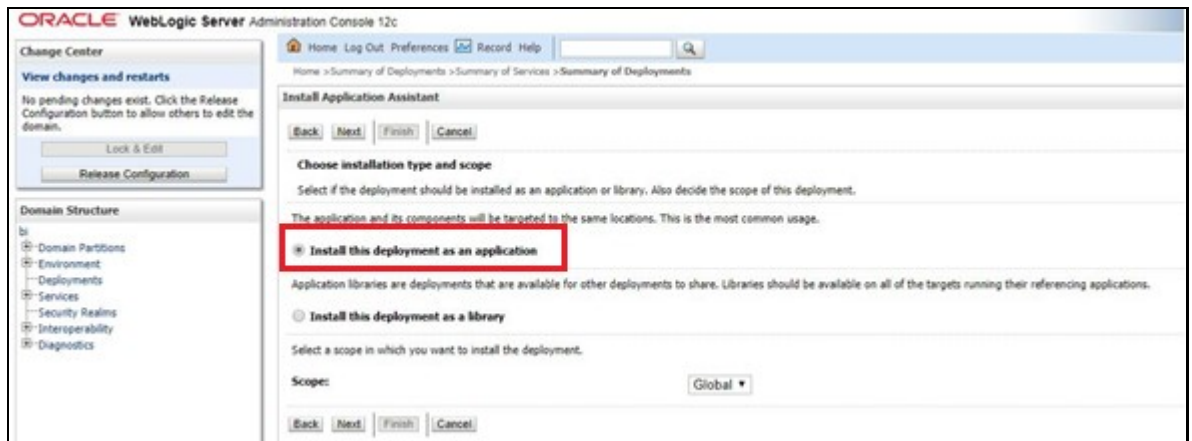
3. Paste the full path of the **D3** directory, select **d3 (open directory)**, and click **Next**.

Figure 2: WebLogic Administration Console – Locale Deployment



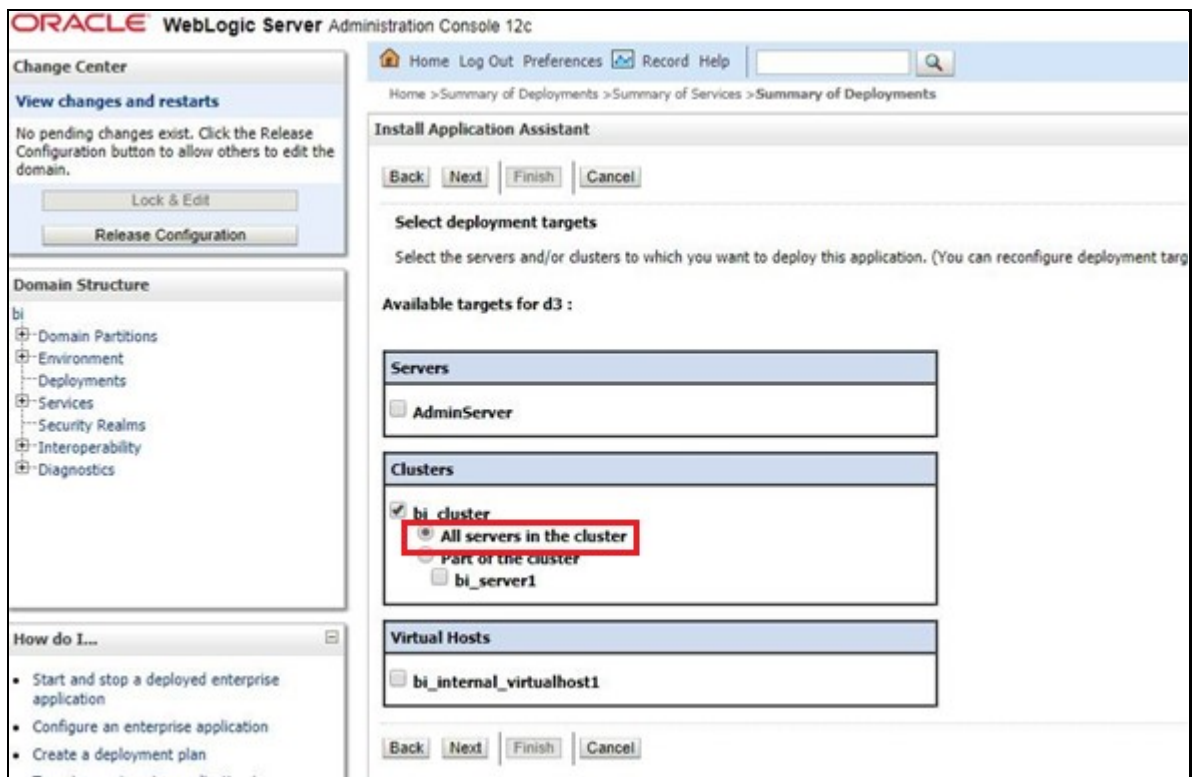
4. Select **Install this deployment as an application** and click **Next**.

Figure 3: WebLogic Administration Console – Installation Type Selection



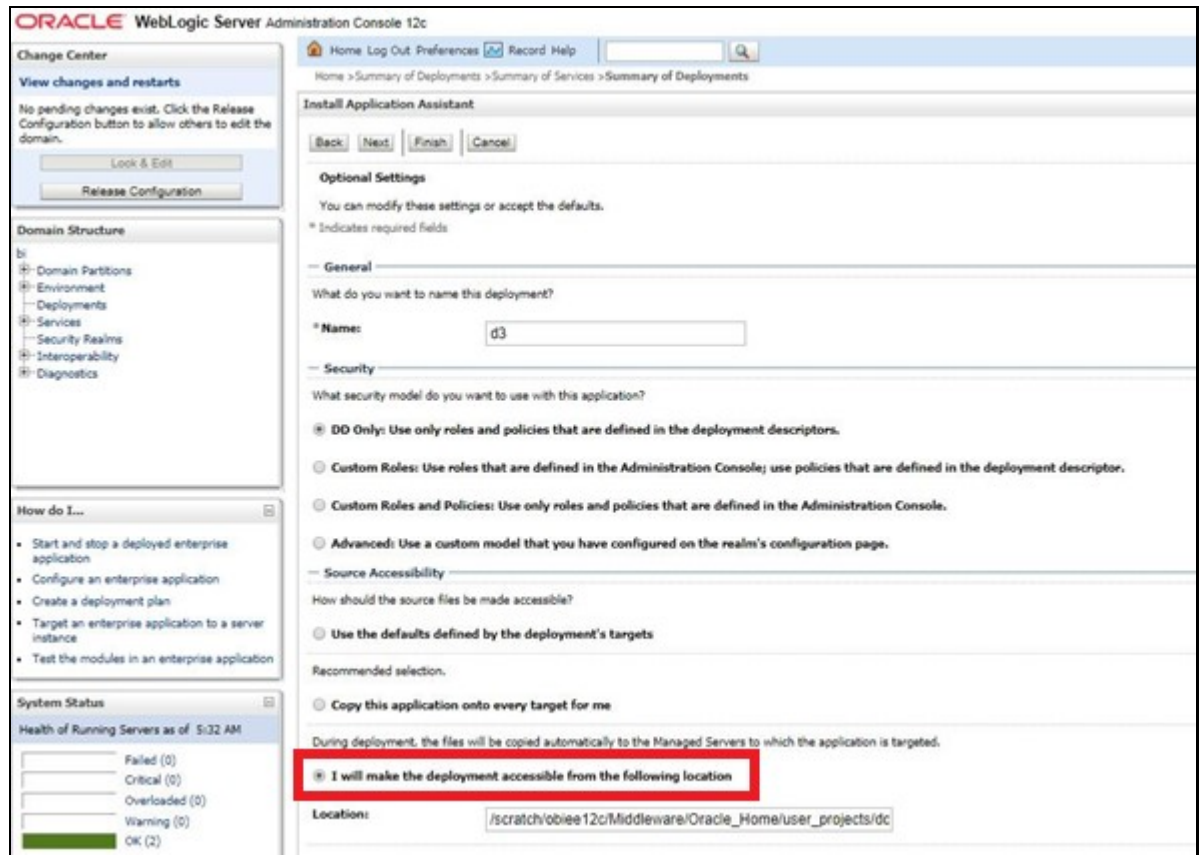
5. Select **bi_cluster**, and then select **All servers in the cluster**.

Figure 4: WebLogic Administration Console – Deployment Targets



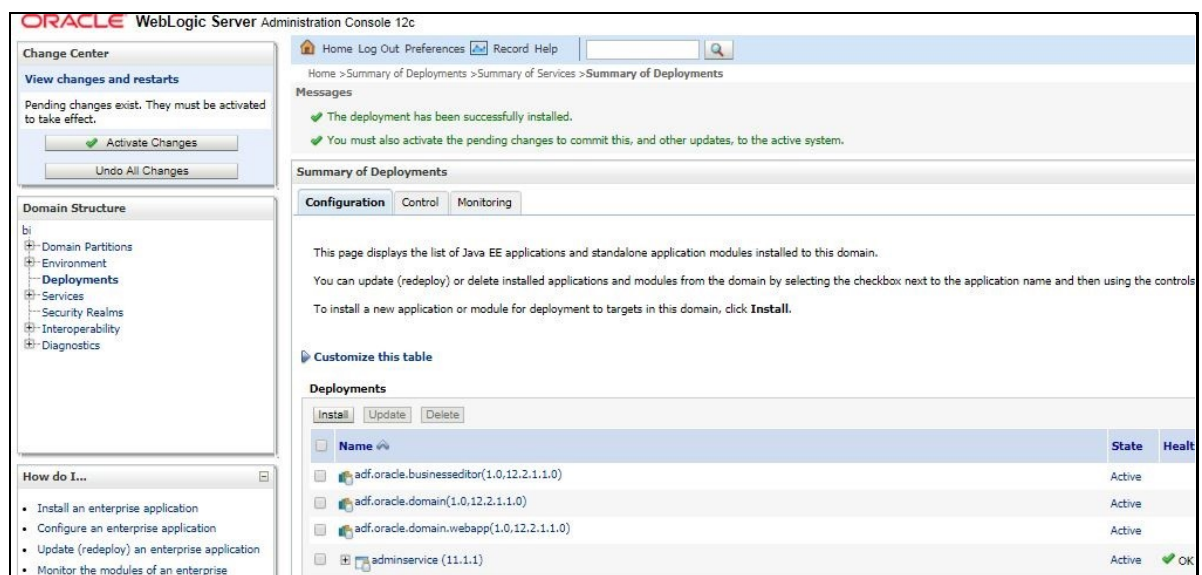
6. Select **I will make the deployment accessible from the following location** (as highlighted in the following screenshot) and click **Finish**.

Figure 5: WebLogic Administration Console – Optional Settings



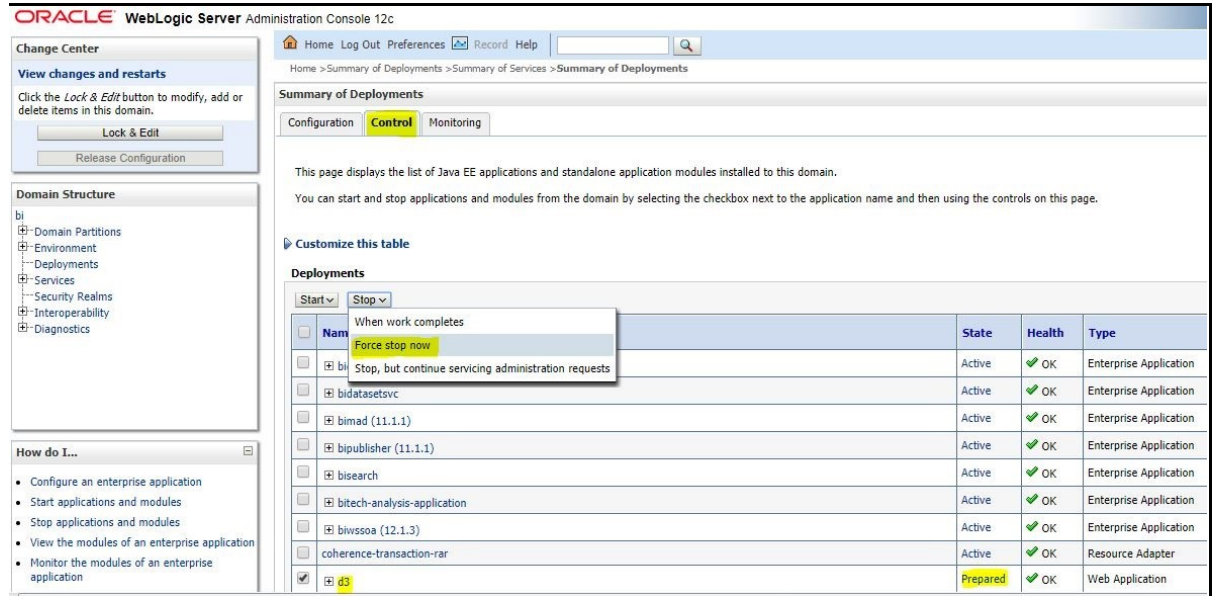
7. Click **Activate Changes**.

Figure 6: WebLogic Administration Console – Summary of Deployments



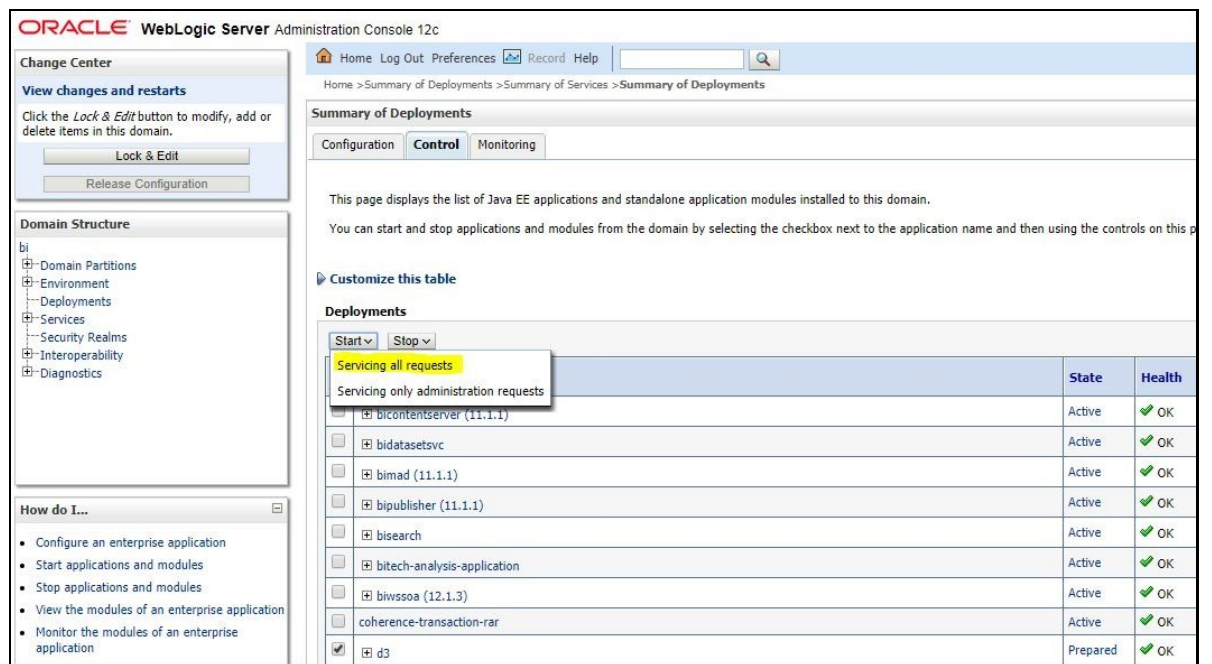
- After activating the changes, the application will now be in a **Prepared** state. Select the **Control** tab. All the installed applications are displayed. Select the application from the **Deployments** table, click **Stop**, and then select **Force stop now** from the drop-down menu.

Figure 7: WebLogic Administration Console – Customize the Deployed Applications



- Start the application by selecting the check box next to it and then select **Servicing all requests** from the **Start** drop-down menu in the **Deployments** table in the WebLogic Server Administration Console.

Figure 8: WebLogic Administration Console – Customize the Deployed Applications



- The application will now change to the **Active** state and is ready to use.

OFSAA Support

Raise a Service Request (SR) in [My Oracle Support \(MOS\)](#) for queries related to the OFSAA applications.

Send Us Your Comments

Oracle welcomes your comments and suggestions on the quality and usefulness of this publication. Your input is an important part of the information used for revision.

- Did you find any errors?
- Is the information clearly presented?
- Do you need more information? If so, where?
- Are the examples correct? Do you need more examples?
- What features did you like most about this manual?

If you find any errors or have any other suggestions for improvement, indicate the title and part number of the documentation along with the chapter/section/page number (if available) and contact the My Oracle Support.

Before sending us your comments, you might like to ensure that you have the latest version of the document wherein any of your concerns have already been addressed. You can access My Oracle Support site that has all the revised or recently released documents.

