

Oracle Financial Services
Asset Liability Management
Applications Pack
Language Pack Installation &
Configuration Guide

Version 8.0.1.0.0



DOCUMENT CONTROL

| Version Number | Revision Date | Changes Done |
|-------------------------------|---------------|--|
| Version 1.0 | May 2015 | Created document to capture OFSALM Application Language Pack 8.0.1.0.0 Release patch update procedure. |
| Created By: Arpana Danayak | Reviewed By: | Approved By: Neel Mahapatra/Surag Ramachandran |

Executive Summary

This document includes the necessary instructions to install the OFSALM Application Pack (Language Pack) 8.0.1.0.0 and perform the required post update configurations. The latest copy of this guide can be accessed from [OHC Documentation Library](#).

TABLE OF CONTENTS

- 1 OFSALM APPLICATION PACK (LANGAUGE PACK) 8.0.1.0.0 RELEASE 4**
 - 1.1 Pre Installation Requirements4
 - 1.2 How to Apply this Language Pack Release?4
 - 1.2.1 GUI Mode Installation..... 6
 - 1.2.2 Silent Mode Installation 11
 - 1.3 Post Installation Configuration11
 - 1.3.1 Run MLS Utility 11
 - 1.3.2 OFSALMA (Oracle Financial Services Asset Liability Management Analytics) Language Pack Support 12
 - 1.4 User Desktop Settings 13

- 2 REFERENCES 17**
 - 2.1 Supported Language Pack Details 17
 - 2.2 Configuration for GUI Mode Installation 18

1 OFSALM Application Pack (Language Pack) 8.0.1.0.0 Release

This document describes the necessary steps to install and configure 8.0.1.0.0 (Language Pack) and enable the UI of OFSALM Application Pack in different languages in addition to US-English. The language Packs supported in this release are *Simplified Chinese, Traditional Chinese, French, German, Indonesian, Italian, Japanese, Korean, Portuguese, Russian, Spanish, Thai, French Canada, Arabic, Hebrew, Turkish, and Vietnamese.*

1.1 Pre Installation Requirements

- OFSALM Application Pack 8.0.1.0.0 has to be successfully installed before proceeding with this installation.
- Check the locale installed.

To check the locale installed, execute the following command:

```
locale -a | grep -i 'en_US.utf'
```

Based on the operating system, the following output is displayed:

- Linux : en_US.utf8
- AIX : EN_US.UTF-8
- Solaris : en_US.UTF-8

The following patch should be installed before proceeding with this installation:

| OFS AAI Pack Version | Patches/ Instructions |
|----------------------|---|
| 8.0.1.0.0 | Download and install patch for BUG # 22459775 : MLS UTILITY IS NOT GETTING EXECUTED THROUGH LP INSTALLER |

Note: These patches are applicable for OFS AAI and OFS AAI.

1.2 How to Apply this Language Pack Release?

Refer to the following instructions to install the contents of this Language Pack.

1. Login to <https://support.oracle.com/> and search for **22460150** under the *Patches & Updates* tab.
2. Download the Oracle Financial Services ALM Pack v8.0.1.0.0 Language Pack Release #1 archive file from MOS and copy it to your OFSAA server in **Binary** mode.

3. Stop all the OFSAA Services. For more information, refer to the *Start/Stop Infrastructure Services* section in [Oracle Financial Services Asset Liability Management Application Pack Installation Guide Release 8.0.0.0.0](#) available at OTN library.
4. If you have Unzip utility, skip to the next step. Download the Unzip utility (OS specific) and copy it in **Binary** mode to the directory that is included in your PATH variable, typically **\$HOME** path or directory in which you have copied the language pack archive file.
5. Extract the contents of the OFSALM Application pack (language pack) 8.0.1.0.0 archive file using the following command:

```
unzip <os> <name of the file to be unzipped>
```

For example, `unzip aix OFS_ALM_8.0.1.0.0_LP_GENERIC.zip`

6. Grant permissions 755 for Installation and Download directory.
7. Navigate to `OFS_ALM/bin` directory. The Language Pack installation is supported in both **GUI Mode** and **Silent Mode**. Begin the Language Pack installation by executing **Setup.sh** file in either of the following options:
 - o `./setup.sh GUI` - The GUI mode of installation requires certain prerequisite configurations to be performed. For more information, refer to [Configuration for GUI Mode Installation](#).
 - o The SILENT mode of installation does not require a simulator.
 - a) Set the installation parameters in `OFS_ALM/conf/silent.props` file.
 - b) Execute the command `./setup.sh SILENT`. For more information, refer to the [Silent Mode Installation](#) section.

For information on Language Pack *Code* and its *Properties*, refer to the [Supported Language Pack Details](#) section.

Note the following:

- An Installation log is generated in the path `<PATCH_EXTRACTED FOLDER>/OFS_ALM_PACK/OFS_ALM/logs/OFS_ALM_patch_installation.log` folder. You can ignore ORA-00942 and ORA-00955 errors in log file. In case of any other errors, contact Oracle Support.
 - You should not use process-interrupting commands like Ctrl+C or Ctrl+Z, which may terminate the process abruptly.
8. Post successful installation of the Language Pack, perform the configurations as explained in the [Post Installation Configuration](#) section.
 9. Delete the existing EAR/WAR file available in `$FIC_HOME/ficweb` folder.

10. Generate **EAR/WAR** file and redeploy the application onto your configured web application server. For more information, see the [Oracle Financial Services Asset Liability Management Application Pack Installation Guide Release 8.0.0.0.0](#) available at OTN Documentation library.
11. Once the Language Pack has been installed successfully and post installation configurations are performed, **restart** all the OFSAA services. For more information, see the [Oracle Financial Services Asset Liability Management Application Pack Installation Guide Release 8.0.0.0.0](#) available at OTN Documentation library.

1.2.1 GUI Mode Installation

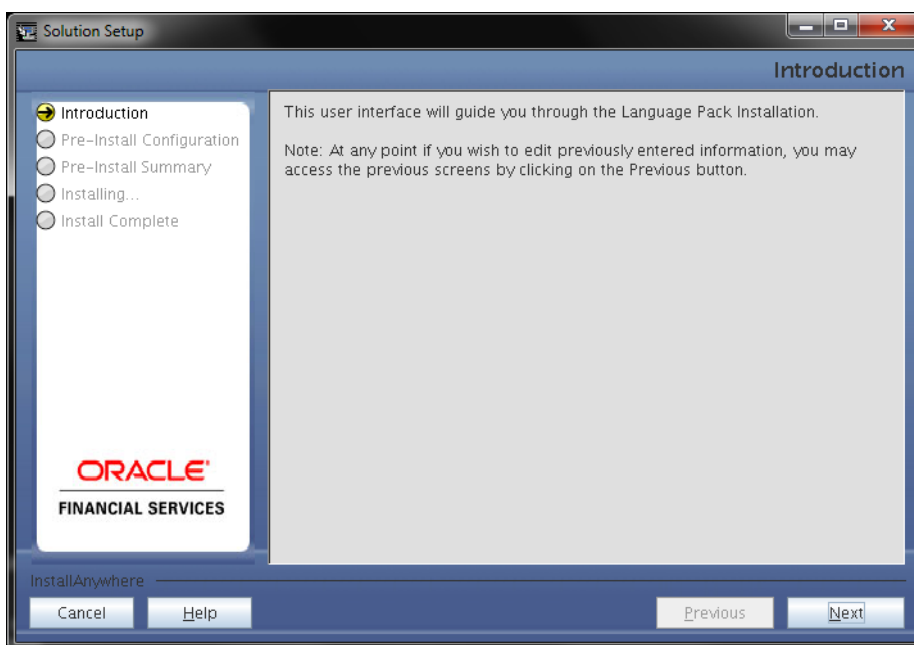
In GUI mode of installation, you can to enter the Installation parameters through the wizard.

To install Language Pack in GUI mode, follow below steps:

1. To begin Oracle Financial Services Asset Liability Management Application pack (Language pack) installation, execute the `setup.sh` file with argument as `./setup.sh GUI`.

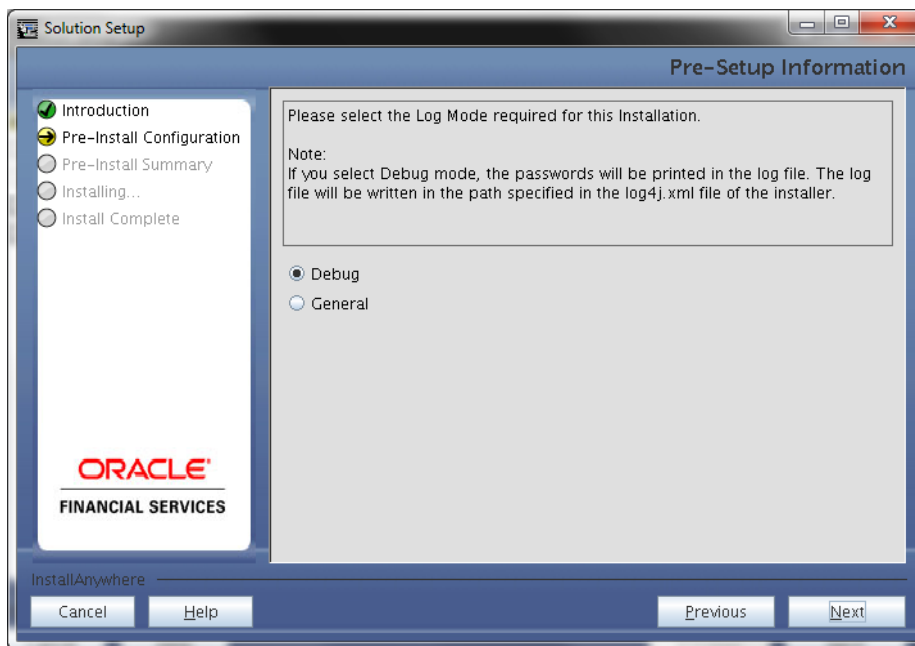
NOTE: Remove the control M characters in Setup.sh before execution, if required. You might have control M characters, if you are extracting the Installer in Windows and moving the same to Unix after download.

2. After initialization, the *Introduction* screen is displayed.



Click **Next**.

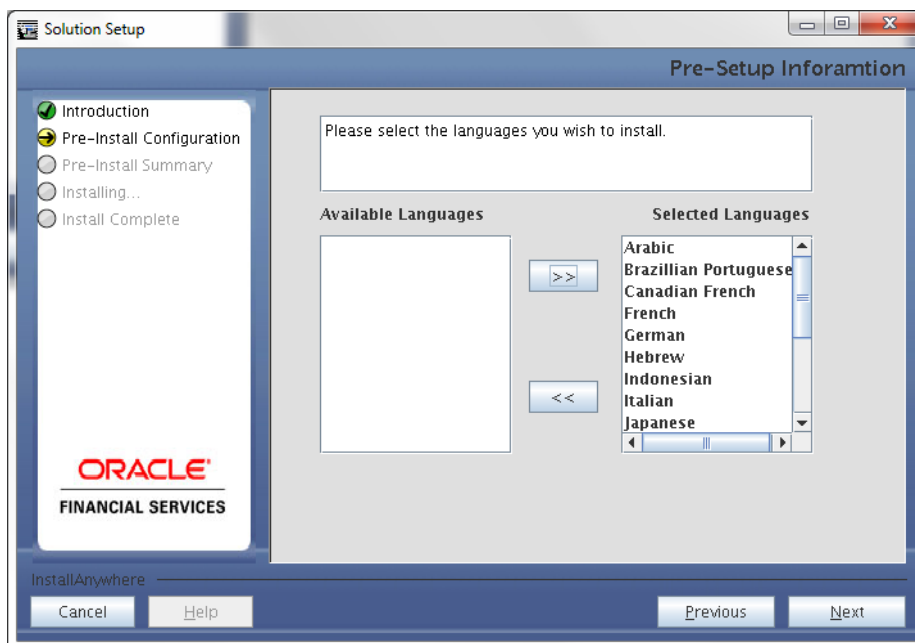
3. Select the log mode for this installer. If Debug is selected, then Passwords will be printed in the log file specified in the log4j.xml file of the installer.



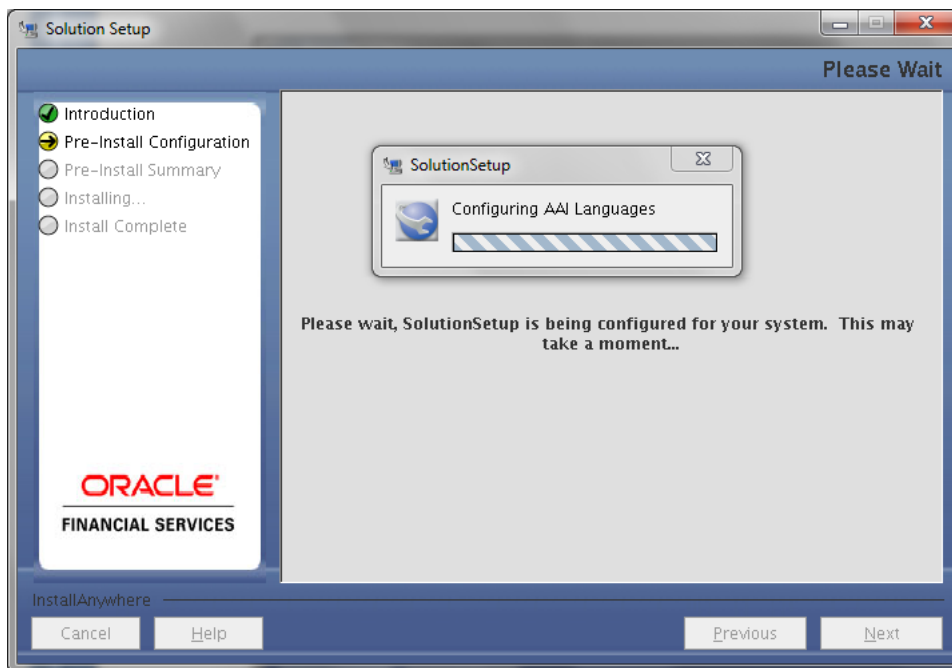
4. This screen displays the information on the list of languages to be installed. The LHS panel lists all the languages for which OFSAAI Language pack has been applied. Select the list of languages you wish to install and click **Next**.

NOTE: Select at least one language to proceed for installation.

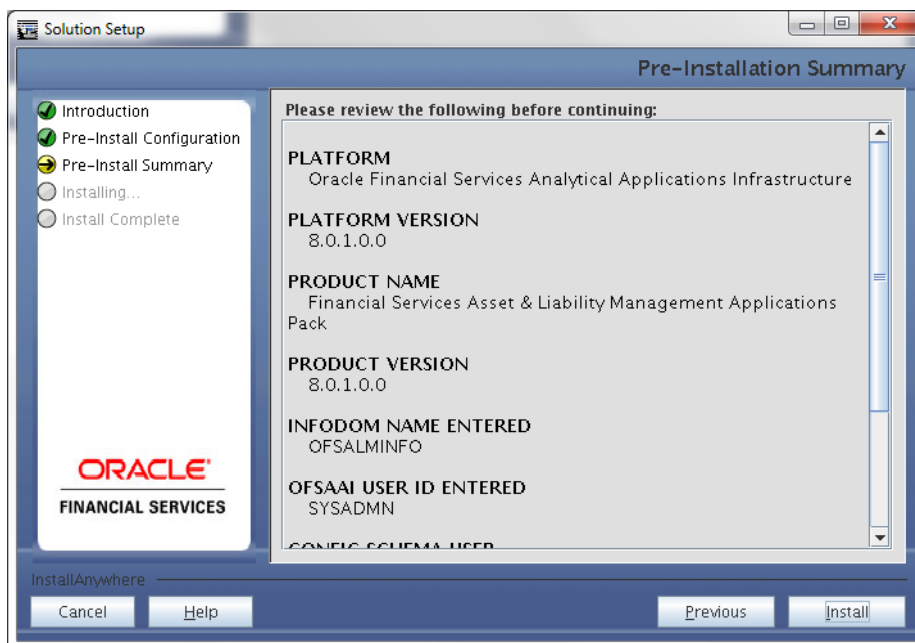
For information on Language Pack *Code* and its *Properties*, refer to the [Supported Language Pack Details](#) section.



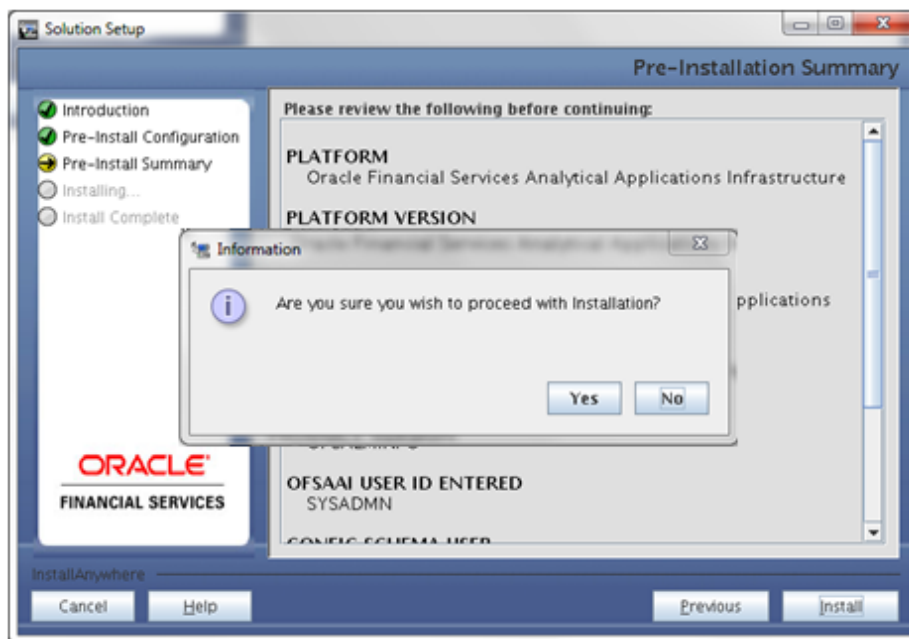
The selected Languages are configured.



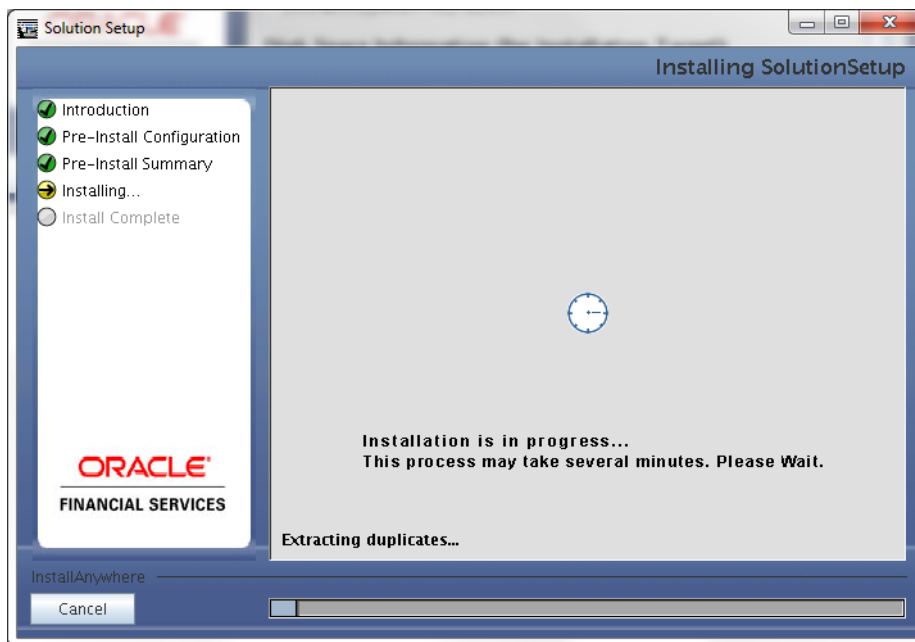
5. This screen displays the pre-installation summary. Verify all details and click **Install** to proceed.



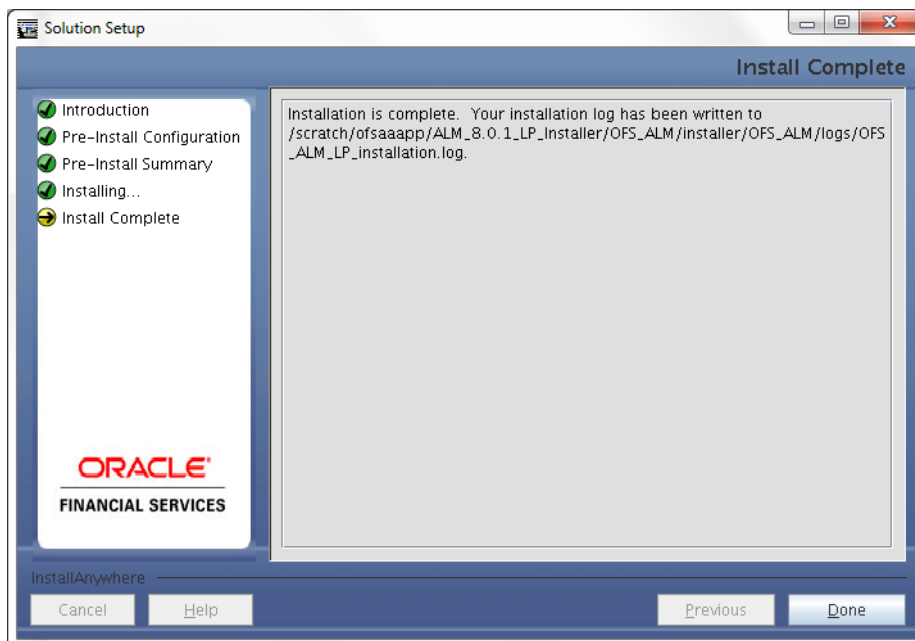
A confirmation message is displayed, click **Yes** to start the installation process.



6. This screen displays the installation process. The installation needs to be completed to proceed further.



7. After the installation is complete the *Installation Complete* window is displayed.



8. Click **Done**.

1.2.2 Silent Mode Installation

To install Language Pack in Silent mode, follow below steps:

1. Modify the `OFS_ALM/conf/silent.template` file to specify the required Language Pack(s) to be installed and save as `silent.props` file. Set the value to **1** against the required language to install or **0** to skip installation of the language. You can also set the value **1** against multiple languages.

For example:

`LOCALE_FRENCH=1` to install French Language Pack.

`LOCALE_GERMAN=1` to install German Language Pack.

`LOCALE_CHINESE_SIM=0` to skip the installation of Simplified Chinese Language Pack.

For information on Language Pack *Code* and its *Properties*, refer to the [Supported Language Pack Details](#) section.

Note: If an existing OFS ALM Language Pack is being upgraded to 8.0.1.0.0, then select the already installed languages along with the ones that you want to install.

1.3 Post Installation Configuration

Post successful installation of 8.0.1.0.0 (Language Pack), you need to perform the following configurations.

1.3.1 Run MLS Utility

- Execute the **MLS Utility**.
- Navigate to `$FIC_HOME/Post_AAI_Migration` directory.
- Execute the following command:

```
./aaipi.sh
```

For more information, contact Oracle Support.

NOTE: This step is required to be executed every time a new language is installed until the next release of OFSAAI Application Pack Language Pack is available.

1.3.2 OFSALMA (Oracle Financial Services Asset Liability Management Analytics) Language Pack Support

This section is applicable if you are installing this language pack on an OFS ALM Application Pack version 8.0.1.0.0.

Webcatalog Changes:

- Refer Language pack tabular sheet on how to configure and support ALMBI (Asset Liability Management Business Intelligence) Reports on multiple language packs.

| Language pack tabular sheet | | | | |
|-----------------------------|---------------------|--------------------|-------------------|------------------------------|
| S.No | Language Pack | Java Locale Folder | Caption Folder ID | obiee - Select a language |
| 1 | Arabic | ar_EG | l_ar | عربية - Arabic |
| 2 | Simplified Chinese | zh_CN | l_zh-cn | 中文 - Chinese |
| 3 | Traditional Chinese | zh_TW | l_zh-tw | 中文繁體 - Chinese (Traditional) |
| 4 | French | fr_FR | l_fr | français |
| 5 | German | de_DE | l_de | Deutsch |
| 6 | Hebrew | iw_IL | l_he | עברית - Hebrew |
| 7 | Italian | it_IT | l_it | italiano |
| 8 | Japanese | ja_JP | l_ja | 日本語 - nihongo |
| 9 | Korean | ko_KR | l_ko | 한국어 - hangul |
| 10 | Portuguese | pt_BR | l_pt-br | Português (Brasil) |
| 11 | Russian | ru_RU | l_ru | Русский - russkij |
| 12 | Spanish | es_ES | l_es | Español |
| 13 | Thai | th_TH | l_th | ไทย |
| 14 | Turkish | tr_TR | l_tr | Türkçe |
| 15 | Vietnamese | vi_VN | l_vi | Tiếng Việt Nam |
| 16 | Indonesian | in_ID | l_id | Indonesian |
| 17 | French Canada | fr_CA | l_fr-ca | français (Canada) |

- Copy obiee caption xml files available at \$FIC_HOME/ALMBI/CAPTIONS/<Java Locale Folder> for a particular language pack selected during installation into the obiee deployment area available at
 <Oracle BI Instance Home>/bifoundation/OracleBIPresentationServicesComponent/coreapplication_obips1/msgdb/<Caption Folder ID>/captions/
- Note that Administrator has to create a folder structure as "msgdb/<Caption Folder ID>/captions/" as mentioned above if not physically available before placing the xml file(s).
- Restart OBIEE server.

For more information contact Oracle Support.

NOTE: This step is required to be executed every time a new language is installed until the next release of OFS ALM Application Pack Language Pack is available.

RPD Changes:

Step1

1. Open ALMBI RPD in online mode.
2. Navigate to Manage -> Variables->Session->Initialization Blocks.
3. Navigate to External Metadata Strings on the RHS.Double click,check out and edit Data source.
4. Click **Check Out** and edit Data Source.
5. Replace the **SELECT** query with the following. Click **Ok** and close the window.

```
SELECT message_id, message_text
FROM fsi_bi_messages_repository_mls
WHERE TRIM(language_id )= DECODE( 'VALUEOF(NQ_SESSION.LOCALE)' ,
'ar', 'ARA', 'en' , 'ENU', 'fr', 'FRA', 'de' , 'DEU', 'es',
'ESN', 'ja', 'JPN', 'pt-br', 'PTB', 'it', 'ITA', 'sv', 'SVE',
'da', 'DAN', 'nl', 'NLD', 'zh-cn' , 'CHS', 'zh-tw', 'CHT', 'he',
'HEB', 'ko', 'KOR', 'cs', 'CSY', 'fi' , 'FIN', 'el', 'ELL',
'pt', 'PTG', 'pl', 'POL', 'el','GRC', 'hu','HUN', 'ro','ROM',
'sk','SKY', 'fr-ca','FRC', 'en-ca','ENC', 'en-gb','ENG', 'en-
nl','ENN', 'en-ie','ENI', 'fr-ch','FRS', 'de-ch','DES', 'de-
at','DEA', 'fr-be','FRB', 'nl-be','NLB', 'tr','TRK', 'ru',
'RUS', 'th', 'THA', 'vi', 'VIT', 'id', 'IDN', 'ENU')
```

Step2

1. Right click subject areas **ALM BI & FTP BI** in the Presentation Layer and click Check Out button.
2. Navigate to Externalize Descriptions -> Generate Custom Description and click **Check Out** button.
3. **Check in** the changes and save the RPD.

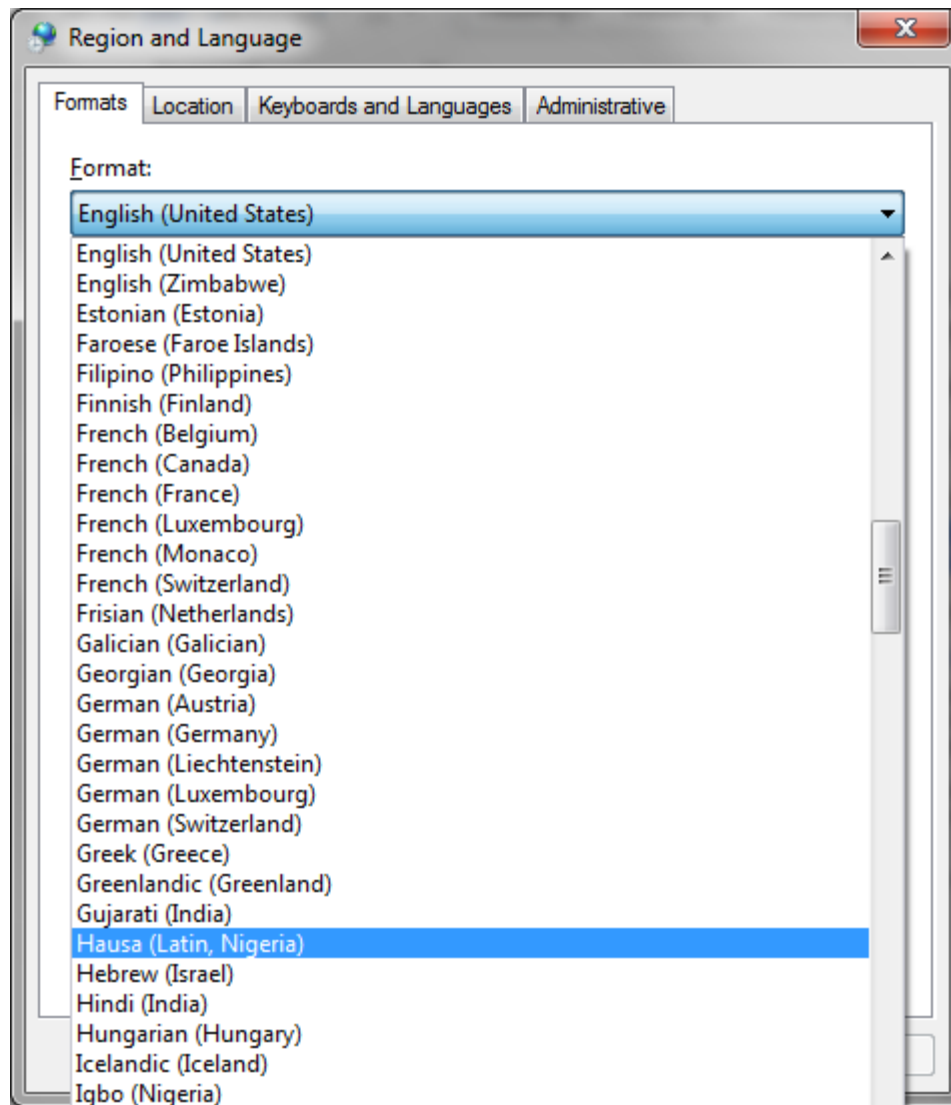
Step3

Login to ALMBI, reload files and meta data by navigating through Administration link and refresh cache.

1.4 User Desktop Settings

Post the successful installation of Language Pack, you need to configure the Operating System and Browser on every User Desktop, prior accessing the OFSAA application.

1. Navigate to **Start**; click **Control Panel** select **Regional and Language** Options.
2. Under the **Formats** tab, choose the required language from the drop-down list for Language for non-Unicode programs.



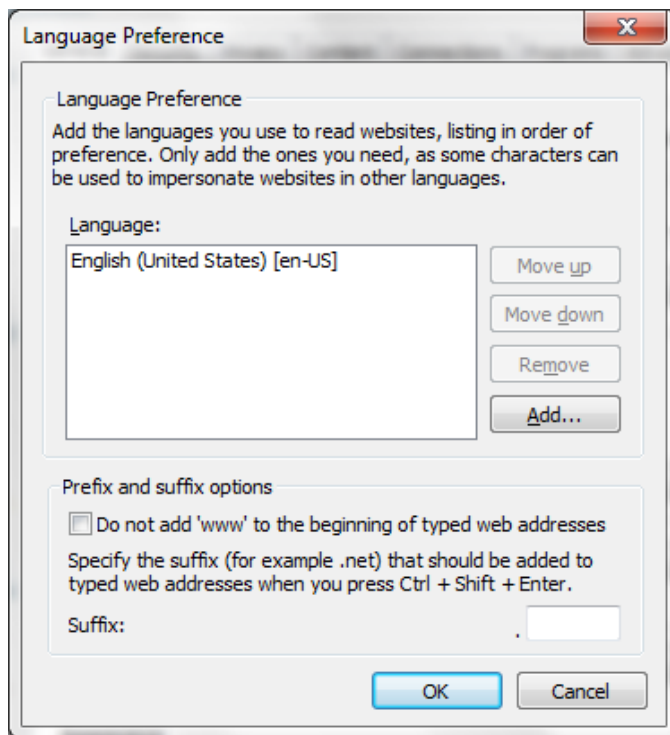
For information on Language Pack *Code* and its *Properties*, refer to [Supported Language Pack Details](#) section.

3. Click **Apply** and click **OK**.

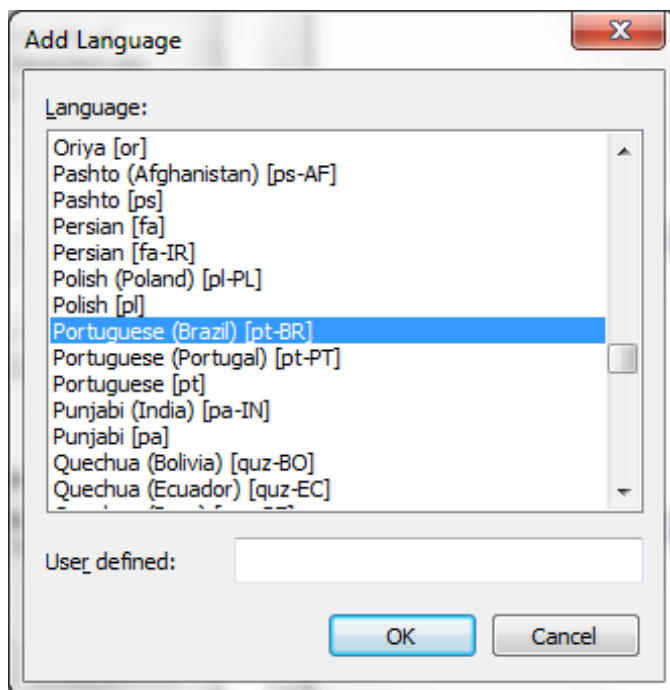
To enable the settings in Browser (Internet Explorer), follow these steps:

1. Navigate to **Tools > Internet Options**.

2. Under the **General** tab, Click **Languages**. The *Language Preference* window is displayed.



3. Click **Add**. The *Add Language* window is displayed.



4. Select the installed Language Pack from the list. You can press and hold **Ctrl** key for multiple selections. For information on Language Pack *Code* and its *Properties*, refer to section [Supported Language Pack Details](#). Click **OK**.
5. Click **OK** in the *Language Preference* window and again click **OK** in *Internet Options* window to save the settings and exit.
6. Restart the user machine for the above changes to take effect.

2 References

This section of the document consists of information which is common to all the sections and are referenced where ever required. You can refer to the details based on your need.

2.1 Supported Language Pack Details

The following table lists all the supported Language Packs in OFSALM Application Language Pack 8.0.1.0.0 release along with their code and properties available for selection.

| Sl. No. | Language Pack | Locale | Locale as displayed in “Regional and Language Options” list | Code | Properties 1 = Install 0 = Don't Install |
|---------|---------------------|---------------------------|---|-------|--|
| 1 | Simplified Chinese | LOCALE_CHINESE_SIM | Chinese (PRC) | zh_CN | 0 and 1 |
| 2 | Traditional Chinese | LOCALE_CHINESE_TRAD | Chinese (Taiwan) | zh_TW | 0 and 1 |
| 3 | French | LOCALE_FRENCH | French (France) | fr_FR | 0 and 1 |
| 4 | German | LOCALE_GERMAN | German (Germany) | de_DE | 0 and 1 |
| 5 | Indonesian | LOCALE_INDONESIAN | Indonesian | id_ID | 0 and 1 |
| 6 | Italian | LOCALE_ITALIAN | Italian (Italy) | it_IT | 0 and 1 |
| 7 | Japanese | LOCALE_JAPANESE | Japanese | ja_JP | 0 and 1 |
| 8 | Korean | LOCALE_KOREAN | Korean | ko_KR | 0 and 1 |
| 9 | Portuguese | LOCALE_PORTUGUESE | Portuguese (Brazil) | pt_BR | 0 and 1 |
| 10 | Russian | LOCALE_RUSSIAN | Russian | ru_RU | 0 and 1 |
| 11 | Spanish | LOCALE_SPANISH | Spanish (Spain) | es_ES | 0 and 1 |
| 12 | Thai | LOCALE_THAI | Thai | th_TH | 0 and 1 |
| 13 | Vietnamese | LOCALE_VIETNAMESE | Vietnamese | vi_VN | 0 and 1 |
| 14 | French Canada | LOCALE_CANNDIAN FRENCH | French Canada | fr_CA | 0 or 1 |
| 15 | Arabic | LOCALE_ARABIC | Arabic | ar_EG | 0 or 1 |
| 16 | Hebrew | LOCALE_HEBREEW | Hebrew | iw_IL | 0 or 1 |
| 17 | Turkish | LOCALE_TURKISH | Turkish | tr_TR | 0 or 1 |

2.2 Configuration for GUI Mode Installation

To install OFS ALM Application Pack in GUI mode, you need to ensure the below software and configurations are available:

- Install and configure any PC X Server software such as Open Text Exceed (formerly Hummingbird Exceed) on the user desktop system from which the installation is triggered.
- Configure DISPLAY variable in the user .profile.

Ensure to set the DISPLAY variable (in user .profile) on the system on which OFSAA will be installed to point to the user desktop system where the PC X Server software has been installed.

Syntax:

```
export DISPLAY=hostname:n.n1
```

where hostname is the IP Address/ Host Name of the user desktop system and n is the sequence number (usually 0).

For example, 10.11.12.13:0.0 or myhostname:0.0



OFSALM Application Language Pack 8.0.1.0.0 Installation and Configuration Guide

Oracle Corporation
World Headquarters
500 Oracle Parkway
Redwood Shores, CA 94065
U.S.A.

Worldwide Inquiries:

Phone: +1.650.506.7000

Fax: +1.650.506.7200

www.oracle.com/us/industries/financial-services

Copyright © 2015 Oracle Financial Services Software Limited. All rights reserved.

No part of this work may be reproduced, stored in a retrieval system, adopted or transmitted in any form or by any means, electronic, mechanical, photographic, graphic, optic recording or otherwise, translated in any language or computer language, without the prior written permission of Oracle Financial Services Software Limited.

Due care has been taken to make this Language Pack Installation and Configuration Guide and accompanying software package as accurate as possible. However, Oracle Financial Services Software Limited makes no representation or warranties with respect to the contents hereof and shall not be responsible for any loss or damage caused to the user by the direct or indirect use of this Language Pack Installation and Configuration Guide and the accompanying Software System. Furthermore, Oracle Financial Services Software Limited reserves the right to alter, modify or otherwise change in any manner the content hereof, without obligation of Oracle Financial Services Software Limited to notify any person of such revision or changes.

All company and product names are trademarks of the respective companies with which they are associated.