

Oracle® Hospitality Symphony Venue Management
Installation Guide
Release 3.10
E89837-02

March 2018

Copyright © 2002, 2018, Oracle and/or its affiliates. All rights reserved.

This software and related documentation are provided under a license agreement containing restrictions on use and disclosure and are protected by intellectual property laws. Except as expressly permitted in your license agreement or allowed by law, you may not use, copy, reproduce, translate, broadcast, modify, license, transmit, distribute, exhibit, perform, publish, or display any part, in any form, or by any means. Reverse engineering, disassembly, or decompilation of this software, unless required by law for interoperability, is prohibited.

The information contained herein is subject to change without notice and is not warranted to be error-free. If you find any errors, please report them to us in writing.

If this software or related documentation is delivered to the U.S. Government or anyone licensing it on behalf of the U.S. Government, then the following notice is applicable:

U.S. GOVERNMENT END USERS: Oracle programs, including any operating system, integrated software, any programs installed on the hardware, and/or documentation, delivered to U.S. Government end users are "commercial computer software" pursuant to the applicable Federal Acquisition Regulation and agency-specific supplemental regulations. As such, use, duplication, disclosure, modification, and adaptation of the programs, including any operating system, integrated software, any programs installed on the hardware, and/or documentation, shall be subject to license terms and license restrictions applicable to the programs. No other rights are granted to the U.S. Government.

This software or hardware is developed for general use in a variety of information management applications. It is not developed or intended for use in any inherently dangerous applications, including applications that may create a risk of personal injury. If you use this software or hardware in dangerous applications, then you shall be responsible to take all appropriate fail-safe, backup, redundancy, and other measures to ensure its safe use. Oracle Corporation and its affiliates disclaim any liability for any damages caused by use of this software or hardware in dangerous applications.

Oracle and Java are registered trademarks of Oracle and/or its affiliates. Other names may be trademarks of their respective owners.

Intel and Intel Xeon are trademarks or registered trademarks of Intel Corporation. All SPARC trademarks are used under license and are trademarks or registered trademarks of SPARC International, Inc. AMD, Opteron, the AMD logo, and the AMD Opteron logo are trademarks or registered trademarks of Advanced Micro Devices. UNIX is a registered trademark of The Open Group.

This software or hardware and documentation may provide access to or information about content, products, and services from third parties. Oracle Corporation and its affiliates are not responsible for and expressly disclaim all warranties of any kind with respect to third-party content, products, and services unless otherwise set forth in an applicable agreement between you and Oracle. Oracle Corporation and its affiliates will not be responsible for any loss, costs, or damages incurred due to your access to or use of third-party content, products, or services, except as set forth in an applicable agreement between you and Oracle.

Contents

Tables	iv
Figures	v
Preface	vi
Audience	vi
Customer Support.....	vi
Documentation.....	vi
Revision History.....	vi
1 Getting Started.....	1-1
Before You Start.....	1-1
Deployment Scenarios.....	1-1
Installing All-in-One.....	1-1
Installing the Application and Database on Separate Servers	1-1
2 Pre-Installation Tasks.....	2-1
Installing Microsoft Internet Information Services (IIS) 7	2-1
3 Installation.....	3-1
Installing on a Single Server	3-1
Installing the Application and Database on Separate Servers	3-3
Installing the Database	3-3
Installing the SimVen Application	3-3
4 Post Installation Tasks	4-1
5 Troubleshooting	5-1
Appendix A	A-1
SimVen Interface Services.....	A-1

Tables

Table 1 - Pre-requisites	2-6
Table 2 - SimVen Interface Services	3-2
Table 3 - Post Installation Tasks	4-1
Table 4 - SimVen Services	A-1

Figures

Figure 2-1 Server Manager – Adding Roles and Features	2-1
Figure 2-2 Server Manager – Select Server	2-2
Figure 2-3 Server Manager – Web Server Role Services	2-2
Figure 2-4 Server Manager – Performance and Security Role Services	2-3
Figure 2-5 Server Manager – Application Development Role Services	2-4
Figure 2-6 Server Manager – Management Tools	2-5

Preface

This document provides instructions on how to install and configure Oracle Hospitality Symphony Venue Management version 3.10.

Audience

This document is intended for all users of Oracle Hospitality Symphony Venue Management (SimVen) version 3.10.

Customer Support

To contact Oracle Customer Support, access My Oracle Support at the following URL:

<https://support.oracle.com>

When contacting Customer Support, please provide the following:

- Product version and program/module name
- Functional and technical description of the problem (include business impact)
- Detailed step-by-step instructions to re-create
- Exact error message received and any associated log files
- Screen shots of each step you take

Documentation

Oracle Hospitality product documentation is available on the Oracle Help Center at

<http://docs.oracle.com>

Revision History

Date	Description of Change
January 2018	<ul style="list-style-type: none">• Initial publication
March 2018	<ul style="list-style-type: none">• Added Microsoft Internet Information Services (IIS) setup steps to Chapter 2

1 Getting Started

This guide provides instructions on how to install, upgrade, and configure SimVen for Microsoft Windows Server 2008 R2 operating system.

Before You Start

Before you begin installing or planning an installation, be sure to review the following information:

- Oracle Hospitality recommends installing SimVen on a server separate from the Symphony FE or Symphony database and application components.
- Make sure you have:
 - Working knowledge of Microsoft Windows.
 - Microsoft Windows administrative privileges.
- The SimVen Installation Media consists of two folders:
 - Symphony Venue Management Installation and SVM Interface Setup.
- You must first install the SimVen application before installing the SimVen Interface. When using the SimVen installer, you can create the TangentC database using Microsoft SQL server. The SimVen Interface service provides its own installation application that enables the services to be installed.

Deployment Scenarios

Installing All-in-One

In an all-in-one scenario, you install the SimVen Back Office application and the SimVen database (TangentC) on a single server.

Installing the Application and Database on Separate Servers

You can install the SimVen back office application components on a single or virtual server and install the TangentC database components on a server where SQL is installed.

2 Pre-Installation Tasks

Perform all pre-installation tasks to ensure that you can successfully install Symphony Venue Management version 3.10.

Installing Microsoft Internet Information Services (IIS) 7

For more information about the Server Manager - Add Roles and Features Wizard, refer to the Microsoft TechNet Library at <https://technet.microsoft.com/en-us/>.

Perform the following steps:

1. Use the Server Manager – Select **2 Add roles and features**.

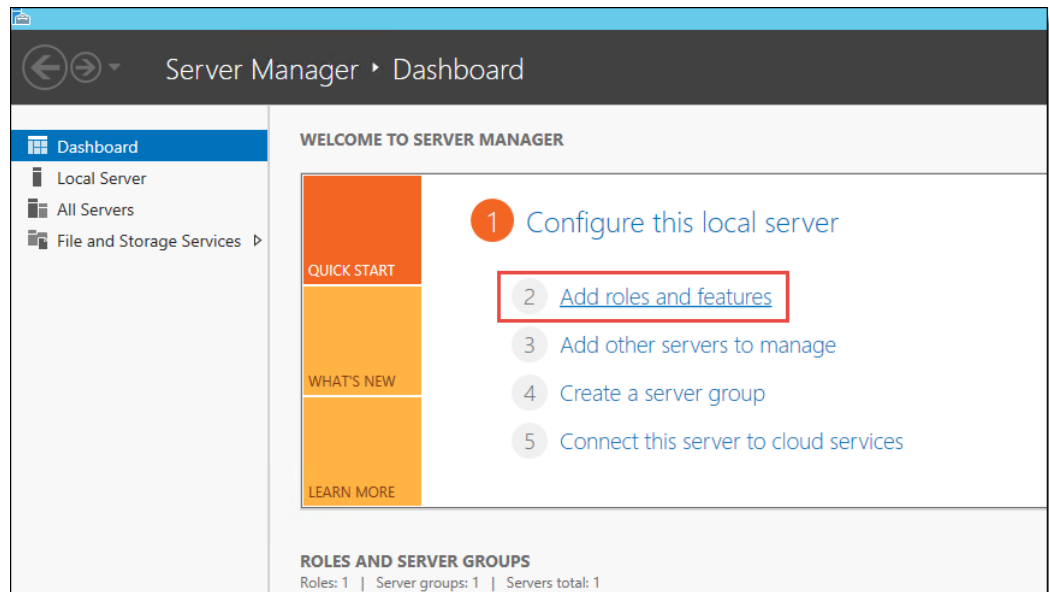


Figure 2-1 Server Manager – Adding Roles and Features

2. Select **Role-based or feature-based installation**, and then click **Next**.
3. Choose **Select a server from the server pool**.

4. Select the server you are configuring, and then click **Next**.

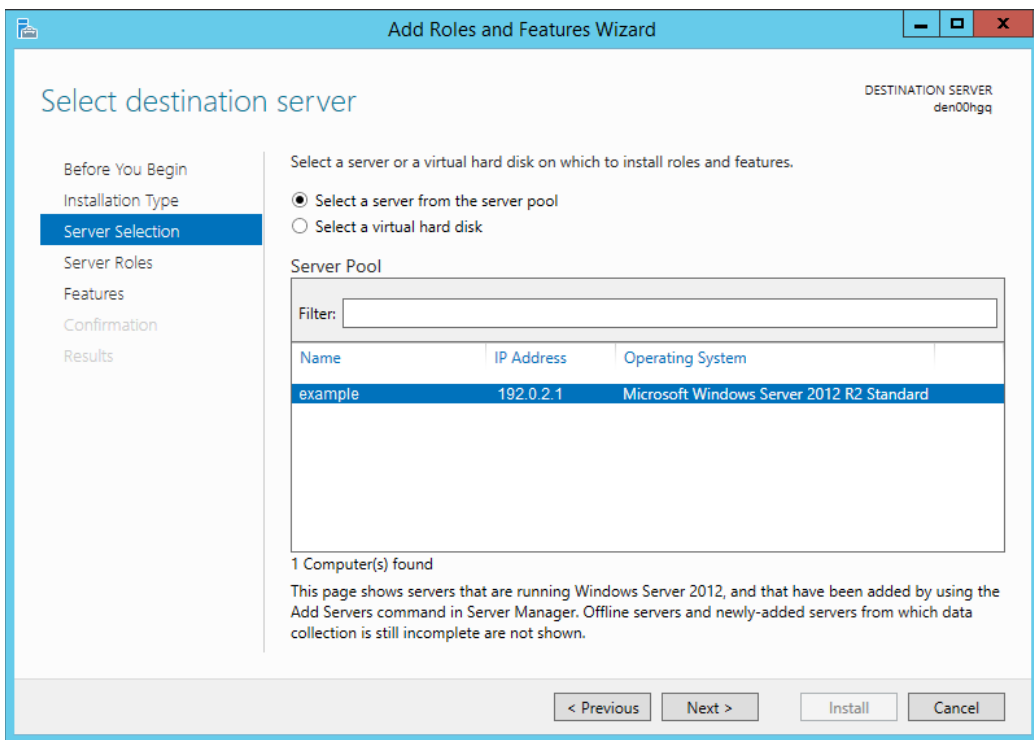


Figure 2-2 Server Manager – Select Server

5. Expand the Web Server Role (IIS).

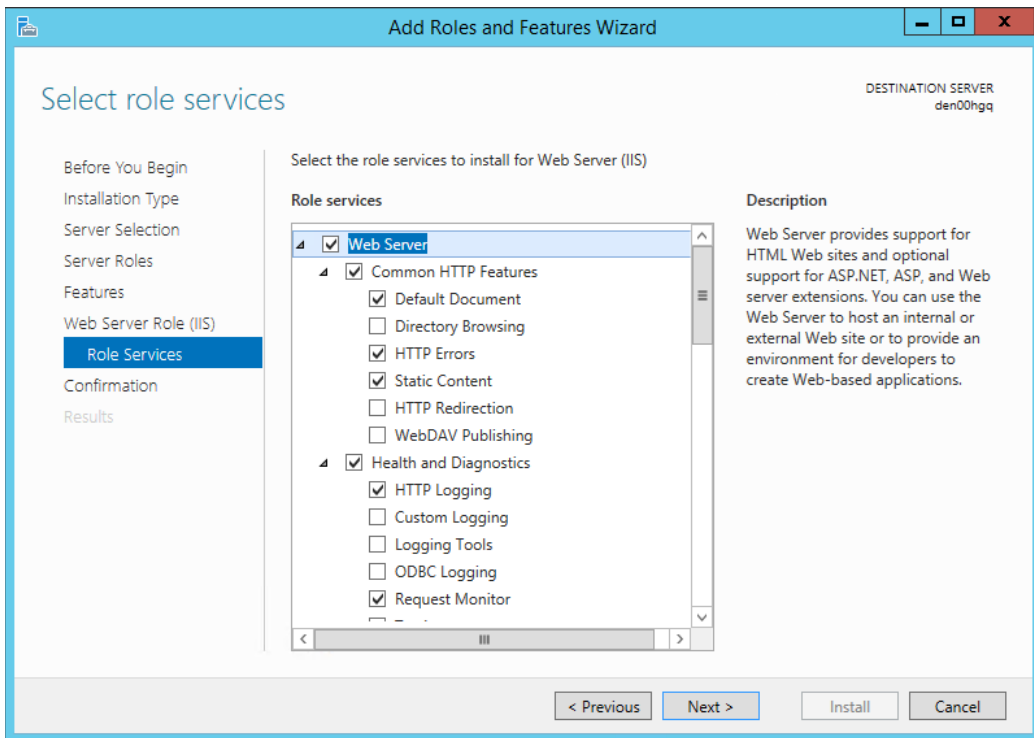


Figure 2-3 Server Manager – Web Server Role Services

6. Expand the Web Server options and select the following Common HTTP Features:
 - Default Document
 - HTTP Errors
 - Static Content

From a system security standpoint, the Directory Browsing role service should not be enabled.

7. Select the following Health and Diagnostics options:
 - HTTP Logging
 - Request Monitor
8. Select the **Performance** option **Static Content Compression**.
9. Select the **Security** option **Request Filtering**.

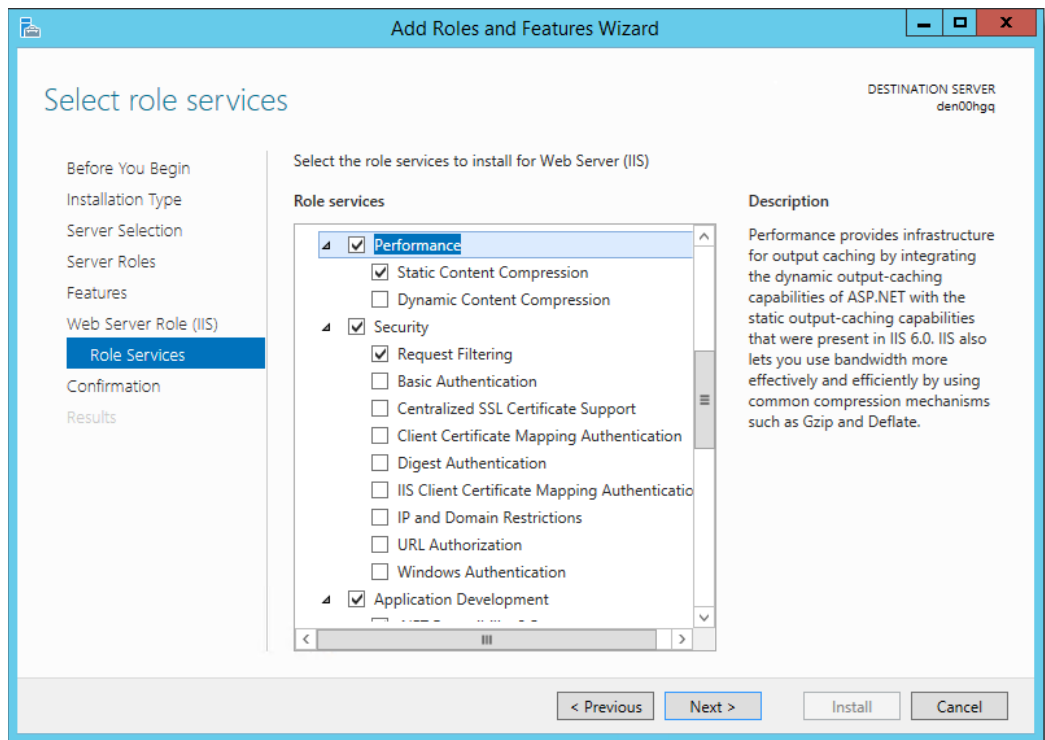


Figure 2-4 Server Manager – Performance and Security Role Services

10. Select and expand **Application Development**, and then select the following options:
 - .NET Extensibility 3.5
 - .NET Extensibility 4.5
 - ASP
 - ASP .NET 3.5
 - ASP .NET 4.5
 - ISAPI Extensions
 - ISAPI Filters

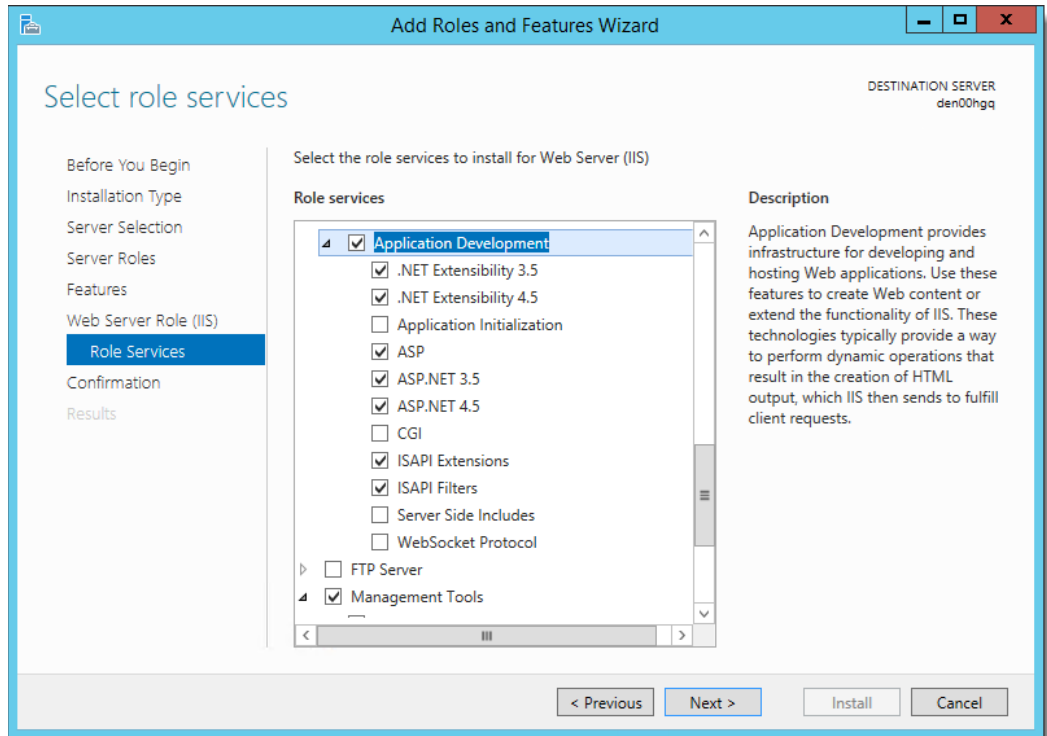


Figure 2-5 Server Manager – Application Development Role Services

11. Select and expand **Management Tools**, and then select the following options:
 - IIS Management Console
 - IIS Management Scripts and Tools
12. Select **IIS 6 Management Compatibility**, and then select the following options:
 - IIS 6 Metabase Compatibility
 - IIS 6 Management Console
 - IIS 6 Scripting Tools
 - IIS 6 WMI Compatibility

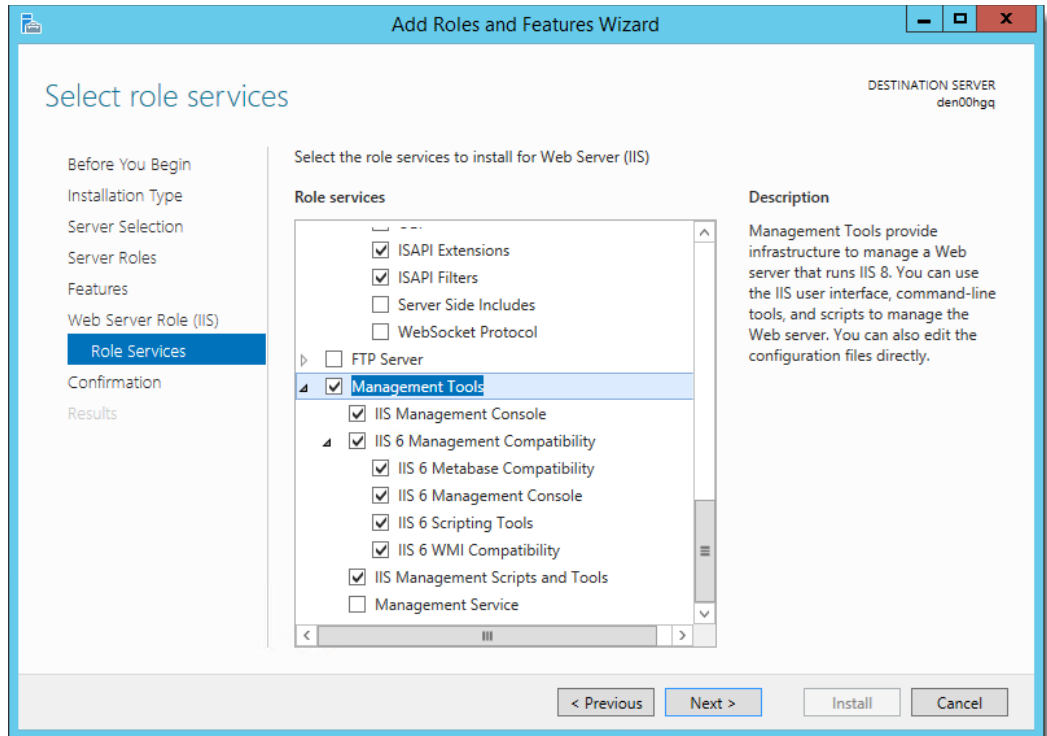


Figure 2-6 Server Manager – Management Tools

13. Click **Next** as needed, and then click **Install**.

For more information about the *Server Manager - Add Roles and Features Wizard*, refer to the Microsoft TechNet Library at <https://technet.microsoft.com/en-us/>.

Continue to perform the prerequisite installation steps listed in this table.

Table 1 - Pre-requisites

Pre-Requirement	Instructions
Visual DataFlex Software license code	You shall receive an email with the license codes for the Visual DataFlex software. The same license codes are also emailed to the site's Sales Representative. If you lose the software license codes, contact your Sales Representative.
Install a database platform on the database server.	SimVen currently only supports the following database server platforms: <ul style="list-style-type: none">• Microsoft SQL Server 2005• Microsoft SQL Server 2008 R2• Microsoft SQL Server 2012 R2 For instructions on how to install Microsoft SQL Server, refer to the Microsoft TechNet Library at https://technet.microsoft.com/en-us/
Create an SSL certificate	Each customer that uses SimVen is required to purchase a SSL Certificate from an authorized certificate issuing authority. A self-signed certificate should not be used longer than absolutely necessary. Refer to the Microsoft TechNet Library at https://technet.microsoft.com/en-us/ for instructions on creating an SSL certificate.
Download the Oracle Symphony Venue Management installation media.	Download the Oracle Symphony Venue Management installation media from the Oracle Technology Network (OTN) website at https://edelivery.oracle.com/

3 Installation

This chapter describes how to install SimVen in different deployment scenarios.

Installing on a Single Server

1. Browse to the SimVenInstaller folder on the SimVen application server, and then run the **Simphony Venue Management Installation.exe** file.
2. Click **Install** when prompted to install Microsoft SQL Server 2012 Native Client, and then follow the instructions on screen.
3. In the Simphony Venue Management System installation wizard, click **Next**.
4. Select **SimVen Application and Database** as the **Setup Type**, and then click **Next**.
5. Enter an existing **SQL Server Name** and **Login** for a database administrator, and then click **Next**.
6. Enter the password for the SQL Server Administrator Login, and then click **Next**.
7. Enter a username for the default SimVen database (for example, TANADMIN), and then click **Next**.
8. Enter a strong password for the default SimVen database, and then click **Next**. The password must consist of minimum eight characters including a special character and number.
9. Select a **Local Installation Drive** location, and then click **Next**.
10. Select an existing program folder to create a shortcut, click then **Next**.
11. Review the settings for the installation, and then click **Next**.
12. Select the feature that you want to install and click **Next**. The choices are:
 - a. Concessions
 - b. Vending Application
 - c. Vending Room
13. For fresh installations, you are prompted to install Visual DataFlex. Follow the wizard's instructions for installing the Visual DataFlex 2016 Client Engine (18.2). Select **Local Installation**, when prompted for the installation location.
14. In the Database Password & Authentication Passphrase Encryption Utility, enter a **New Pass Phrase** of minimum 15 characters, re-enter the pass phase in the **Verify New Pass Phrase** field, and then click **Create**.
A dialog box should appear stating the following: Successfully created a New Pass Phrase. Click **OK**.
15. Enter an administrative **User Name** and **Password** for the SimVen application, and then click **OK**.
16. In the SQL Server Connection for the SimVen DB Server dialog, select the **Server Name** from the drop-down list.
 - a. Enable the **Use SQL Server Authentication** option to log onto the database server.
 - b. Select from the drop-down list or enter a database name to connect to the database, and then click **OK**.
 - c. * (Optional) Click on the **Test Connection** button to verify your database connection.
 - d. Upon successfully logging in, you receive a prompt indicating that your SimVen administrative username and password has been saved. Click **Close Panel**.

17. Close the utility, and then click **Finish** to exit the Symphony Venue Management System installation wizard
18. Browse to the SimVenInterfaceSetup folder on the SimVen application server, run the **SVMInterfaceSetup** file, and then click **Next** to continue.
19. Select the database platform that Symphony is running on, and then click **Next**.
20. Select the appropriate services to install according to the following table, and click **Next**. Refer to Table 2 - SimVen Interface Services for more information on SimVen Interface Services:

Table 2 - SimVen Interface Services

Services	Description
Tangent Web Service	Select this web service to enable SimVen interaction with Symphony.
Tangent Win Service	Select this windows service program to enable communication between the Symphony POS system's workstations and the VenueManagement web service and TangentService.
Venue Management Web Service	Select this web service program to query the local database, TangentC and run the automatic processes for Inventory Snapshots and Stand Sheet Commit.

21. Select the network protocol type to use for the web components, and then click **Next**.
22. Select the **Local Installation Drive** location, and then click **Next**.
23. Review the installation settings, and then click **Next**.
24. Enter the **Host** and **Port** number for the **Tangent Web Service URL**, and then click **Next**.
25. Enter the **Host** and **Port** number for the **Venue Management Web Service URL**, and then click **Next**.
26. In the Security Enforcement dialog:
 - a. To add a new certificate, select **New**, click **Select**, enter or select the certificate location, and then enter the **Password** for the certificate.
 - b. To add an existing certificate, select **Existing**, and then select the certificate from the drop-down list.
 - c. Click **Add TLS Certificate to Binding** in the TangentService Site Binding Service and the VenueManagement Site Binding sections, and then click **Next**.
27. In the Database Password & Authentication Passphrase Encryption Utility, click **Read DB Settings** in the Database tab, and then click **Yes** to create a default file.
28. Select **MCRSPOS** from the Database Type/Name pane, and then enter the **DB Username** and **DB Password** for the database, and then click **Test Connection**.
29. Repeat step 28 for the **Location_Activity_DB** and the **TangentC** databases.
30. Click **Test All Connections** to verify the connection to all three databases, and then click **OK** when you receive a success message.
31. Click **Save Password(s)**, click **Yes** to encrypt the passwords, and then close the utility.
32. Once the installation completes, click **Finish** to restart the computer.

Installing the Application and Database on Separate Servers

Before installing SimVen on a separate server, you must first install the SimVen database on the database server where Microsoft SQL Server is installed.

Installing the Database

1. On the database server, browse to the SimVenInstaller folder and run the **Simphony Venue Management Installation.exe** file to begin the installation.
2. Click **Install** when prompted to install Microsoft SQL Server 2012 Native Client, and then follow the instructions on screen.
3. In the Simphony Venue Management System installation wizard, click **Next**.
4. Select **Database Only** as the **Setup Type**, and then click **Next**.
5. Enter the **SQL Server Name** and **Login** for a database administrator, and then click **Next**.
6. Enter the password for the SQL Server Administrator Login, and then click **Next**.
7. Enter a username for the default SimVen database (TangentC), and then click **Next**.
8. Enter a password for the default SimVen DB (TangentC database), and then click **Next**.
9. Select the **Local Installation Drive** location, and then click **Next**.
10. Provide a new folder name or select a Program Folder from the existing list to add a shortcut, and then click **Next**.
11. Click **Finish** to complete the installation.

Installing the SimVen Application

1. On the application server, browse to the SimVenInstaller folder, run the **Simphony Venue Management Installation.exe** file to begin the installation, and then click **Next**.
2. Select **SimVen Application** as the **Setup Type**, and then click **Next**.
3. Select the **Local Installation Drive location**, and then click **Next**.
4. Select an existing program folder to create a shortcut, click then **Next**.
5. Review the settings for the installation, and then click **Next**.
6. Follow the wizard's instructions for installing the Visual DataFlex 2016 Client Engine (18.2). Select **Local Installation**, when prompted for the installation location.
7. In the Simphony Venue Management System installation wizard, enter the existing SQL Server name or IP address where the TangentC database is installed, and then click **Next**.
8. Follow the instructions in [Installing on a Single Server](#) from Step 16 onwards to complete the installation.

4 Post Installation Tasks

Table 3 lists the post-installation tasks after successfully installing the SimVen application.

Table 3 - Post Installation Tasks

Task	Instructions
Register the Visual DataFlex software license.	<ol style="list-style-type: none">1. Go to Program files, Visual DataFlex 18.2, and open Bin.2. Run the Register.exe application.3. Enter the Serial Number provided by the Sales Representative.4. Enter the Registration Name provided by the Sales Representative.5. Enter the Registration Code provided by the account manager.6. Click Register.
Open the SimVen application through shortcut.	Double-click the Simphony Venue Management shortcut to start SimVen. If you do not see a shortcut, click <i>Start</i> , select Program Files , select Simphony Venue Management , then click Simphony Venue Management .
Microsoft SQL Server Login Credentials prompt.	<ol style="list-style-type: none">1. Enter the Microsoft SQL Server Login credentials: Server: SQL Server name you provided during installation. Username: Local TangentC database username that you provided during the installation. Password: Local TangentC database password that you provided when installing the database. Database: Select TangentC.2. Click Connect.
SimVen application login	Use the SimVen application log in credentials provided during the installation.

5 Troubleshooting

For assistance on troubleshooting, review the install log files stored on the C Drive.

Appendix A

SimVen Interface Services

Table 4 - SimVen Services

Service	Description
Tangent Web Service	<p>A web service program that enables the SimVen Back Office application to:</p> <ul style="list-style-type: none">• Obtain necessary configuration information from Symphony• Post menu item records to Symphony• Handle the creation and retrieval of stand sheets. <p>Tangent web service is used for the cloud environment and can be installed on a separate server.</p>
Venue Management Web Service	<p>A web service program that queries the local database TangentC and runs the automatic processes for Inventory Snapshots and standsheet commit.</p>
Tangent Win Service	<p>A Windows service program that enables communication between Symphony POS system's workstations and the VenueManagement web service and TangentService for gathering sales information needed for the Stand Sheet commit process.</p>