

# Oracle Health Insurance Back Office

## HTTP Service Layer Installation & Configuration Manual

Version 1.6

Part number: E91383-01

April 6th, 2018

Copyright © 2016, 2018, Oracle and/or its affiliates. All rights reserved.

This software and related documentation are provided under a license agreement containing restrictions on use and disclosure and are protected by intellectual property laws. Except as expressly permitted in your license agreement or allowed by law, you may not use, copy, reproduce, translate, broadcast, modify, license, transmit, distribute, exhibit, perform, publish, or display any part, in any form, or by any means. Reverse engineering, disassembly, or decompilation of this software, unless required by law for interoperability, is prohibited.

The information contained herein is subject to change without notice and is not warranted to be error-free. If you find any errors, please report them to us in writing.

If this software or related documentation is delivered to the U.S. Government or anyone licensing it on behalf of the U.S. Government, the following notice is applicable:

#### **U.S. GOVERNMENT RIGHTS**

Programs, software, databases, and related documentation and technical data delivered to U.S. Government customers are “commercial computer software” or “commercial technical data” pursuant to the applicable Federal Acquisition Regulation and agency-specific supplemental regulations. As such, the use, duplication, disclosure, modification, and adaptation shall be subject to the restrictions and license terms set forth in the applicable Government contract, and, to the extent applicable by the terms of the Government contract, the additional rights set forth in FAR 52.227-19, Commercial Computer Software License (December 2007). Oracle USA, Inc., 500 Oracle Parkway, Redwood City, CA 94065.

This software is developed for general use in a variety of information management applications. It is not developed or intended for use in any inherently dangerous applications, including applications which may create a risk of personal injury. If you use this software in dangerous applications, then you shall be responsible to take all appropriate fail-safe, backup, redundancy, and other measures to ensure the safe use of this software. Oracle Corporation and its affiliates disclaim any liability for any damages caused by use of this software in dangerous applications.

Oracle is a registered trademark of Oracle Corporation and/or its affiliates. Other names may be trademarks of their respective owners.

This software and documentation may provide access to or information on content, products, and services from third parties. Oracle Corporation and its affiliates are not responsible for and expressly disclaim all warranties of any kind with respect to third-party content, products, and services. Oracle Corporation and its affiliates will not be responsible for any loss, costs, or damages incurred due to your access to or use of third-party content, products, or services.

Where an Oracle offering includes third party content or software, we may be required to include related notices. For information on third party notices and the software and related documentation in connection with which they need to be included, please contact the attorney from the Development and Strategic Initiatives Legal Group that supports the development team for the Oracle offering. Contact information can be found on the Attorney Contact Chart.

The information contained in this document is for informational sharing purposes only and should be considered in your capacity as a customer advisory board member or pursuant to your beta trial agreement only. It is not a commitment to deliver any material, code, or functionality, and should not be relied upon in making purchasing decisions. The development, release, and timing of any features or functionality described in this document remains at the sole discretion of Oracle.

This document in any form, software or printed matter, contains proprietary information that is the exclusive property of Oracle. Your access to and use of this confidential material is subject to the terms and conditions of your Oracle Software License and Service Agreement, which has been executed and with which you agree to comply. This document and information contained herein may not be disclosed, copied, reproduced, or distributed to anyone outside Oracle without prior written consent of Oracle. This document is not part of your license agreement nor can it be incorporated into any contractual agreement with Oracle or its subsidiaries or affiliates.

# CHANGE HISTORY

Release	Version	Changes
10.16.2.2.0	1.0	<ul style="list-style-type: none"><li>• Creation</li></ul>
10.16.2.2.0	1.1	<ul style="list-style-type: none"><li>• Revision</li></ul>
10.17.1.0.0	1.2	<ul style="list-style-type: none"><li>• Changed grant instructions</li></ul>
10.17.2.0.0	1.3	<ul style="list-style-type: none"><li>• Documented hsl.&lt;app&gt;.developermode and hsl.developermode</li><li>• Added reference to Doc[2] (Back Office HTTP Service Layer User Manual)</li></ul>
10.17.2.1.0	1.4	<ul style="list-style-type: none"><li>• Extended set of relevant <a href="#">properties</a>.</li></ul>
10.17.2.2.0	1.5	<ul style="list-style-type: none"><li>• Minor revision of '<a href="#">Creating a HSL database account</a>'</li><li>• Revised '<a href="#">Security Configuration</a>'</li><li>• Removed 'Restricting access with custom roles' from Security Aspects</li><li>• Renamed 'Security Aspects' to '<a href="#">Additional Security Aspects</a>' and revised contents.</li><li>• Added '<a href="#">Deployment Validation</a>'</li><li>• Added '<a href="#">Appendix C - Testing with SoapUI</a>'</li><li>• Added '<a href="#">Appendix D - Generating a WADL file</a>'</li><li>• Extended set of relevant <a href="#">properties</a> for HSL_CLA.war deployment.</li></ul>
10.17.2.3.0	1.6	<ul style="list-style-type: none"><li>• Added paragraph '<a href="#">Examining the Log File</a>'</li><li>• Added JDK version specific information regarding <a href="#">JSSE</a> configuration.</li></ul>

## RELATED DOCUMENTS

A reference in the text (**doc[x]**) is a reference to another document about a subject that is related to this document.

Below is a list of related documents:

**Doc[1]**      Object Authorisation within OHI Back Office (CTA 13533)

**Doc[2]**      Back Office HTTP Service Layer User Manual (CDO 15195)

---

# Contents

1	Introduction.....	7
1.1	Usage rights.....	7
2	Architectural overview .....	8
2.1	Services components .....	8
3	Installation of HSL services .....	10
3.1.1	Terminology .....	10
3.2	Sizing/load aspects .....	10
3.2.1	Deployment choices.....	11
3.3	Database installation .....	11
3.3.1	Creating a HSL database account .....	11
3.4	WLS Preparation.....	12
3.4.1	Requirements.....	13
3.4.2	Creating a domain .....	14
3.4.3	Creating Managed Server(s).....	16
3.4.4	Creating a machine definition.....	17
3.4.5	Creating a data source.....	19
3.5	Security Configuration.....	24
3.5.1	Set up security realm.....	24
3.5.2	Setup Weblogic user for accessing HSL application .....	25
3.5.3	Enable SSL.....	26
3.5.4	Configure JSSE .....	26
..3.5.4.1	JDK 1.8.0_162 and above.....	27
..3.5.4.2	JDK 1.8.0_151 .. 1.8.0_161 .....	27
..3.5.4.3	Below JDK 1.8.0_151 .....	27
3.5.5	Setting up a key store .....	27
3.5.6	Configure logging level .....	28
3.5.7	Set user lockout .....	29
3.6	(Re)deployment of the HSL Application.....	30
3.6.1	Deploy to a single Managed Server.....	30
3.6.2	Deploy to multiple Managed Servers .....	33
3.6.3	Deploy to cluster .....	33
3.6.4	Deploy for multiple environments (DTAP) .....	33
3.6.5	Publishing the deployed services .....	34
3.7	Additional Security Aspects.....	34
3.7.1	Deploying HSL Application for use with any weblogic user .....	35
3.7.2	Using a custom security policy for a deployed application .....	35
4	Deployment validation .....	37
4.1	Testing with Curl.....	37
4.2	Template Listing.....	38
4.3	getDatabaseInfo .....	38
4.4	Get Online Swagger definition .....	39
4.4.1	Saving the Swagger definition to a file .....	40
4.4.2	Viewing the Swagger definition .....	40
4.5	Troubleshooting.....	41
5	Configuration files for HSL services .....	43
5.1	Back Office HSL properties file .....	43

5.1.1	hsl.jndiname .....	43
5.1.2	hsl.<app>.jndiname .....	43
5.1.3	hsl.usercontext .....	44
5.1.4	hsl.<app>.usercontext .....	44
5.1.5	hsl.developermode .....	44
5.1.6	hsl.<app>.developermode .....	44
5.1.7	hsl.<app>.logfile .....	44
5.1.8	hsl.<app>.loglevel .....	45
5.1.9	hsl.<app>.log.limit .....	45
5.1.10	hsl.<app>.log.count .....	45
5.1.11	hsl.<app>.log.append .....	45
5.1.12	Activating changes to hsl.properties .....	46
5.1.13	Troubleshooting hsl.properties .....	46
5.1.14	Example hsl.properties file .....	46
5.1.15	Keeping hsl.properties up to date .....	47
5.2	Examining the Log File .....	47
5.2.1	Changing the log format .....	48
6	Upgrading HSL services .....	50
7	Appendix A - Service Information .....	53
8	Appendix B - Removing a WLS domain .....	54
9	Appendix C - Testing with SoapUI .....	55
9.1	Create REST project and import Swagger definiton .....	55
9.2	Create a request .....	55
10	Appendix D - Generating a WADL file .....	57
10.1	Create a REST project in SoapUI for your HSL application .....	57
10.2	Open the Service Viewer for the REST Project .....	57
10.3	Export WADL from your REST project .....	57

---

# 1 Introduction

The OHI Back Office HTTP Service Layer is an optional component, which offers operations to support use cases. These use cases may be scenarios for typical tasks performed by for example self-service users (insured members, care providers etc). OHI BO Use Case Services are implemented through the HTTP Service Layer (HSL).

The services in this service layer are based on RESTful Services technology which has the following advantages for current web application frameworks (like AngularJS and Oracle JET):

- accessible through HTTP (for example through Javascript)
- Supports (Javascript friendly) JSON as input and output formats
- standardized interface language through using HTTP verbs (GET, POST, PUT, PATCH, DELETE)
- standardized set of exceptions through HTTP error codes

Typically this HTTP Service Layer is targeted to ease integration in a Service Oriented environment.

This document describes the generic technical details regarding the HTTP Service Layer, how to install and update it and how to change configuration settings.

## 1.1 Usage rights

Customers are required to have the appropriate license rights for using the HTTP Service Layer. Customers who have acquired a Connect to Back Office license are currently permitted to install and use the web service component of the HTTP Service Layer. This is valid until further notice.

The corresponding PL/SQL services may not be used when no Connect to Back Office or HTTP Service Layer license is obtained.

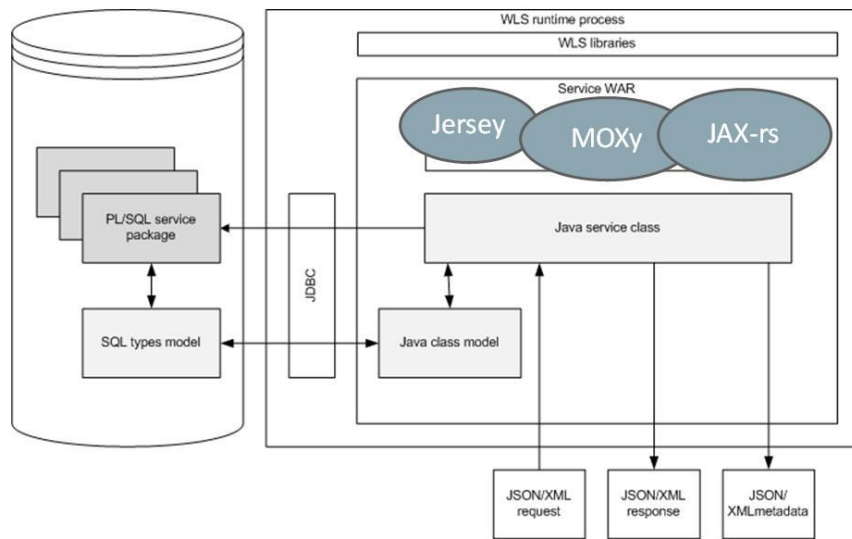
For further information please consult your OHI sales representative.

## 2 Architectural overview

This chapter gives a high level architectural overview of the current HTTP Service Layer implementation.

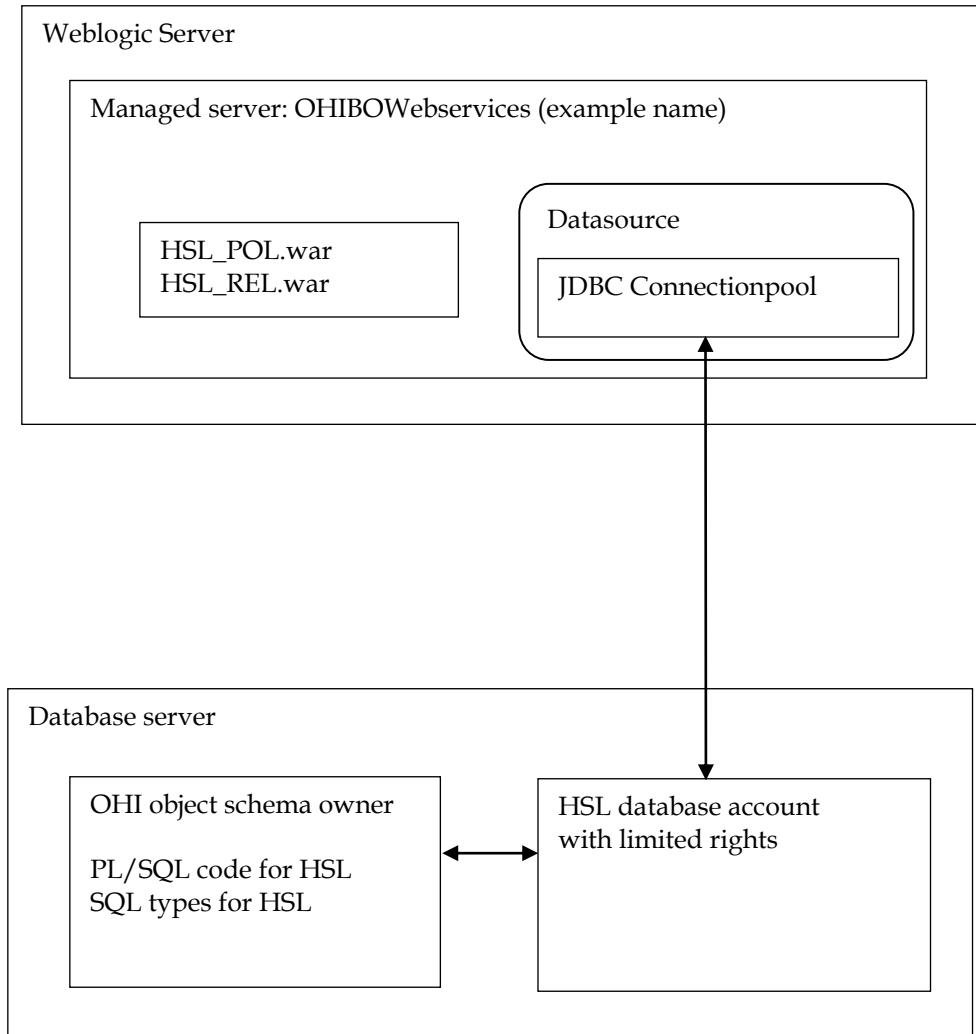
### 2.1 Services components

The functionality of each service is implemented through a PL/SQL service package. The service interface is provided through a Java layer. Jersey, JAX-RS and MOXy are used to serialize and deserialize objects to and from JSON or XML and to help validate input. JDBC is used to map Java objects to SQL objects and vice versa. The PL/SQL service package performs the required operations, using operation parameters and inbound objects to communicate with the OHI Back Office database.





The high level schema below shows how the services are deployed. It also shows the database connection to OHI which uses a database account with restricted access to execute the HSL service implementation in PL/SQL.



## 3 Installation of HSL services

This chapter describes the steps to (re)install the HSL services.

This chapter contains the following parts to separate the various work areas:

- Sizing/load aspects
- Database installation
- WLS preparation
- Security configuration
- (Re)deployment of the HSL application
- Additional Security aspects

### 3.1.1 Terminology

---

Note the following use of terminology:

- HSL stands for HTTP Service Layer. The underlying technology is based on RESTful service technology.
- A HSL service has one or more service operations.
- Each HSL service resides in its own HSL application.
- A HSL application is packaged as a WAR file, which is deployed to the WebLogic application server.

## 3.2 Sizing/load aspects

From the “Introduction” and the “Architectural overview” chapters it should be clear that the HSL services are implemented through PL/SQL in the database.

The Java layer providing the REST interface handles request and response messages. It validates an incoming request, calls the PL/SQL service implementation to perform the required operation and transforms the result into a response message.

This choice means that the larger part of the processing is carried out on the database server and only a small part is handled on the application server. Since the architecture for HSL is similar to the SVL services, the distribution of loads on the application and database server is expected to be comparable. Based on the SVL services it may be assumed that for heavy processing only 1 CPU thread will be busy processing HSL service requests if 10 CPU threads are needed for the database processing for these requests.

Based on SVL experience, most of the simpler service operations on a well-sized and well-performing production environment should not take more than 0.1 up to 0.5 second in total elapsed time when measured on the WebLogic Server. Of this elapsed time most of the time should be spent by the database server handling the call, as mentioned before.

More complicated calls and service calls that return large data sets may take more time but usually should not exceed response times of more than a few seconds. As an example, if it would be offered, a typical premium calculation call should be executed

within a second and a large set of claim lines (several hundreds) should usually be returned within 5 to 10 seconds.

### 3.2.1 Deployment choices

---

The overall load on the OHI application resulting from HSL service calls is customer specific and may change over time.

HSL services are likely to be used by customer-facing applications. Although it may technically be possible to deploy HSL services to the application server running the Forms GUI for internal users, you should be aware of the peak loads from HSL services during commercial campaigns. These loads may well exceed your normal capacity. You should devise your own strategy to cope with these extra loads. This strategy may include using separate application servers for internet users, using a separate database with cached data for information requests, throttling inbound requests etc.

If you choose to install HSL services on the application server for the Forms GUI it is advisable to actively monitor the respective loads of Forms processes, SVL processes and HSL processes. This allows you to pick up trends to help you refine your infrastructure strategy.

Especially if you have multiple applications using the same HSL services, it may help to use a service bus to create a 'separation of concerns'. The service bus allows you to map the HSL interface specification to a customer-specific interface which means less maintenance on the client applications when deploying a new version of a HSL service. As long as the mapping on the service bus is synchronized with the HSL service interface, the code client applications can remain the same.

Stringent requirements for high availability and failover are also reasons to consider a service bus as a go-between.

## 3.3 Database installation

All database components of the HTTP Service Layer are owned by the OHI Back Office schema and are installed through the OHI Back Office release installation procedure.

To use the database components of the HTTP service layer, one or more database accounts must be created with HTTP Service Layer access privileges.

Before creating the account(s), check if you are licensed to use the HTTP Service Layer.

Please check if you have a database object (package) HSL\_UTIL\_PCK in the OHI Back Office schema. If not, something went wrong regarding the installation of the HTTP Service Layer code. If this is incorrect please contact the OHI Support department.

If the package is present in your database you can continue with the database part of the installation.

### 3.3.1 Creating a HSL database account

---

The OHI Back Office schema owns the PL/SQL code to implement the HTTP Service Layer but may not be used to execute the services.

The use of a separate database account to access the HTTP Service Layer components reduces the risk of accessing unauthorized OHI data and makes that account accountable for HSL actions. The HSL account(s) need a minimum of object privileges to the HSL database objects.

One or more of HSL accounts can be created:

- Default HSL account for use with WebLogic application server  
This account is configured in the HSL properties file as the default account for HSL service requests.
- Optional additional HSL accounts for use with WebLogic application server.  
These may be configured in the HSL properties file for one or more specific services.
- Additional HSL account for use with bespoke PL/SQL code development by the customer. Please follow the directions in [Doc\[1\]](#).

The following steps are needed to setup a HTTP Service Layer database account:

1. Create a schema owner, for example HSL\_USER. Determine the password policy, temporary tablespace, etc. according to your company standards but beware there is no interactive login which might show expiration messages for the password due to the enforced password policy.
2. Grant create session system privilege to this account.
3. Grant the HTTP Service Layer object privileges: logon as the OHI Back Office schema owner, enable server output, and run

```
alg_security_pck.HSL_grants
(pi_owner    => '<ohibo_owner>'
,pi_grantee => '<hsl_user_account>'
)
```

Example:

```
execute
alg_security_pck.HSL_grants
(pi_owner    => 'OZG_OWNER'
,pi_grantee => 'HSL_USER')
```

**IMPORTANT:** This command needs be run only once. While installing subsequent OHI BO updates, the privileges of the HSL user accounts are automatically updated.

However, if you run into ORA-01403 errors during an execution your first check should be to run this command in sqlplus, enabling server output before running, and see whether missing grant privileges were granted.

## 3.4 WLS Preparation

When the database account has been created and granted successfully, a WebLogic Server environment (software home) must be prepared for deploying the HSL application.

We expect that you are familiar with the WebLogic concepts like 'domain', 'Managed Server', 'Cluster', etc.

These are your options:

- Use the same WebLogic environment which is used for servicing the OHI Back Office user interface and batches. In this case you should create a new WebLogic domain (with a new Admin Server) for the HSL applications to prevent interference with the GUI application.

- Deploy the HSL applications in a separate WebLogic environment (possibly on a separate server). This allows you to separately upgrade or patch the different WebLogic environments, or implement a workload distribution.

Deploy HSL applications to multiple environments for better scalability. Be sure to deploy each HSL application only once in a Managed Server or a cluster of Managed Servers.

- For testing purposes you may want to have multiple versions within the same domain. In that case you should have a separate Managed Server for each deployment.

Some remarks about installing in a separate WebLogic environment:

- The OHI Back Office GUI application (Forms) installation requires a WebLogic Server “Infrastructure” installation. That means the domain created for Forms needs to have its own database schemas with OPSS and Audit database tables (created by RCU). For the HTTP Service Layer domain these schemas are not required provided you do not select more components during the domain configuration than described.
- When installing in a separate WebLogic Server environment, use a different Installer: use the “Generic” installer instead of the “FMW Infrastructure” installer. When installing in a separate WebLogic environment make sure the correct components are installed when creating the Domain. You need at least:

- Weblogic Advanced Web Services for JAX-WS Extension - 12.2.1 [oracle\_common]
- Weblogic JAX-WS SOAP/JMS Extension - 12.2.1 [oracle\_common]

When you have not installed these components your web services will respond with ‘There are error messages.’ While all info in the functionalFaultType will contain question marks (???)

The instructions in the following paragraphs cover the setup of a new domain including the setting up of Managed Servers, a machine definition, data sources, etc.

This will support the following scenarios:

- ✓ Creating a separate domain with a single Managed Server
- ✓ Creating a separate domain with a cluster of 2 Managed Servers
- ✓ Adding a Managed Server to an existing domain

### 3.4.1 Requirements

---

The following requirements/limitations must be taken into account:

- ✓ A certified WebLogic Server version including JAX-WS (SOAP/JMS) extensions. The HSLservices must be deployed on a single Managed Server or a cluster of Managed Servers (the ‘target’).
- ✓ The HSL services may not be deployed on a Managed Server which is also used for hosting the OHI GUI application (Forms). The Managed Server may not belong to a cluster used for deploying the GUI application.

- ✓ One deployment can only service one single OHI Back Office environment (it connects to a specific connection pool which accesses a specific OHI Back Office 'instance').

If the HSL application must be deployed more than once (for servicing different OHI Back Office environments) each deployment should be on its own Managed Server or Cluster.

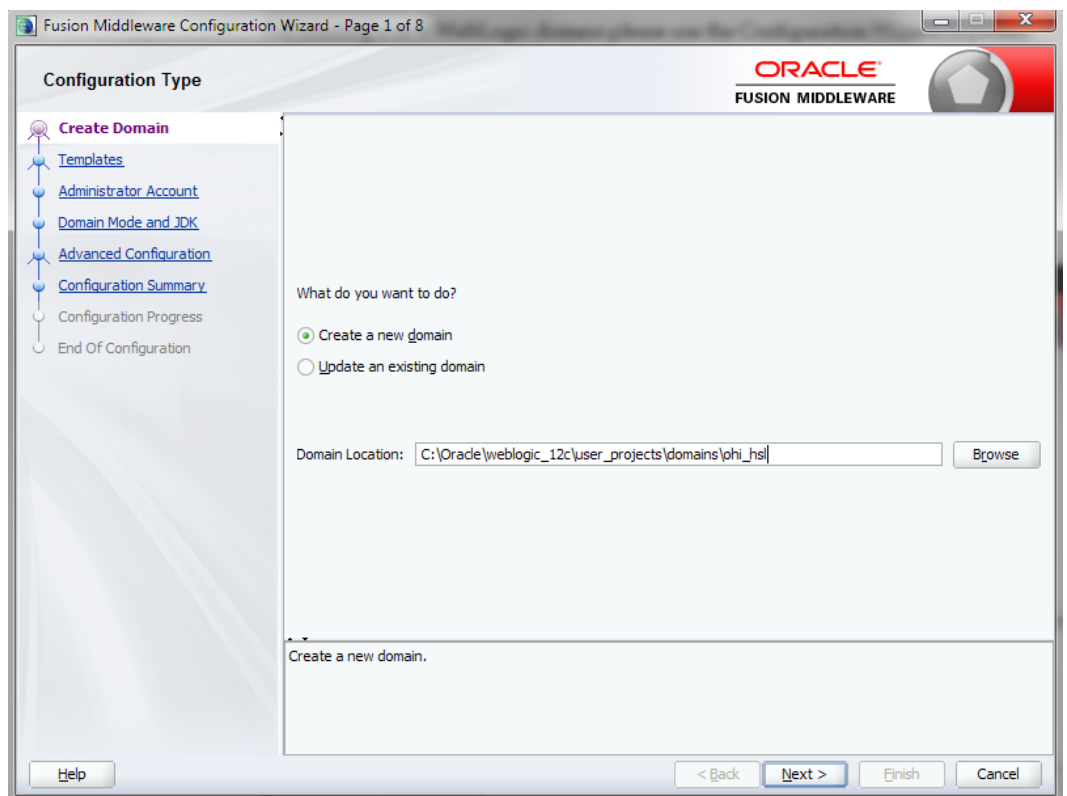
### 3.4.2 Creating a domain

Before creating a Domain, be sure to understand the difference between a "FMW Infrastructure" and a "Generic" WebLogic installation, and the consequences. Make sure the environment variable DOMAIN\_HOME is not set.

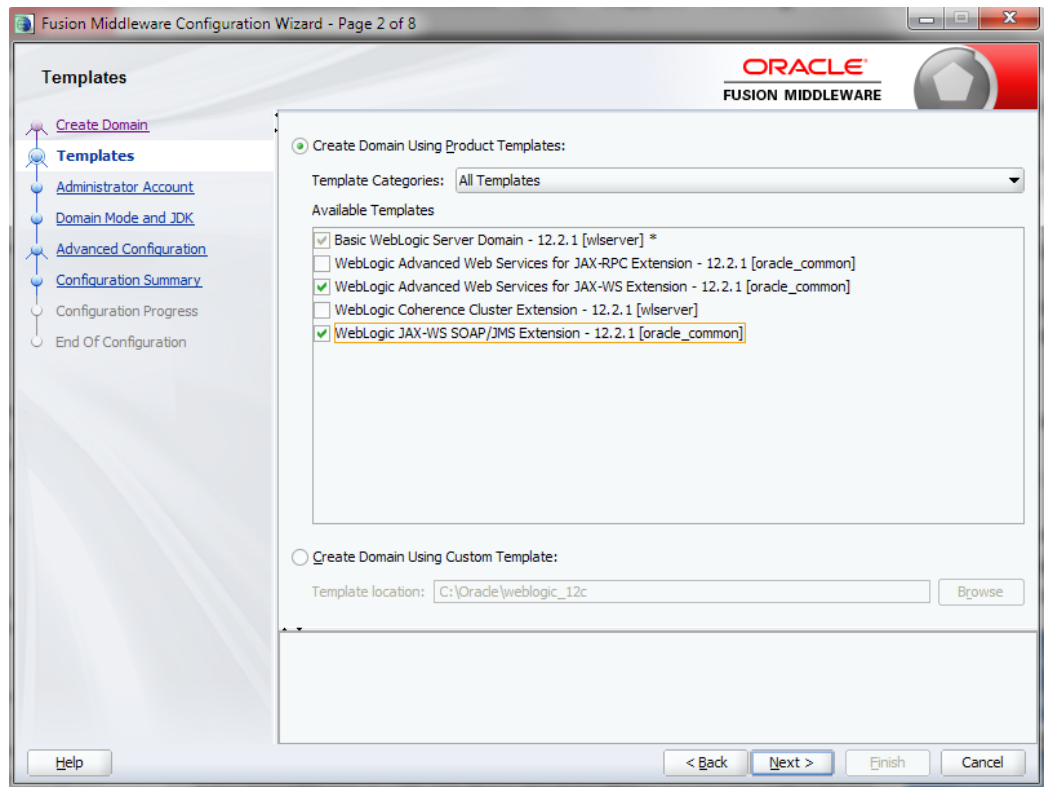
If you create the new Weblogic Domain from the same software home as the Forms Domain, you have to choose the same "Domain Mode" (Development or Production), to avoid errors during startup of the new Managed Server(s).

For creating a new WebLogic domain please use the Configuration Wizard (typically in the common/bin folder of the WebLogic Server home, so for example `$MW_HOME/oracle_common/common/bin/config.sh`)

Specify the domain location. This is inside the Weblogic Home by default, but you can specify a location outside the WebLogic Home. The last part of the location will be the Domain Name.

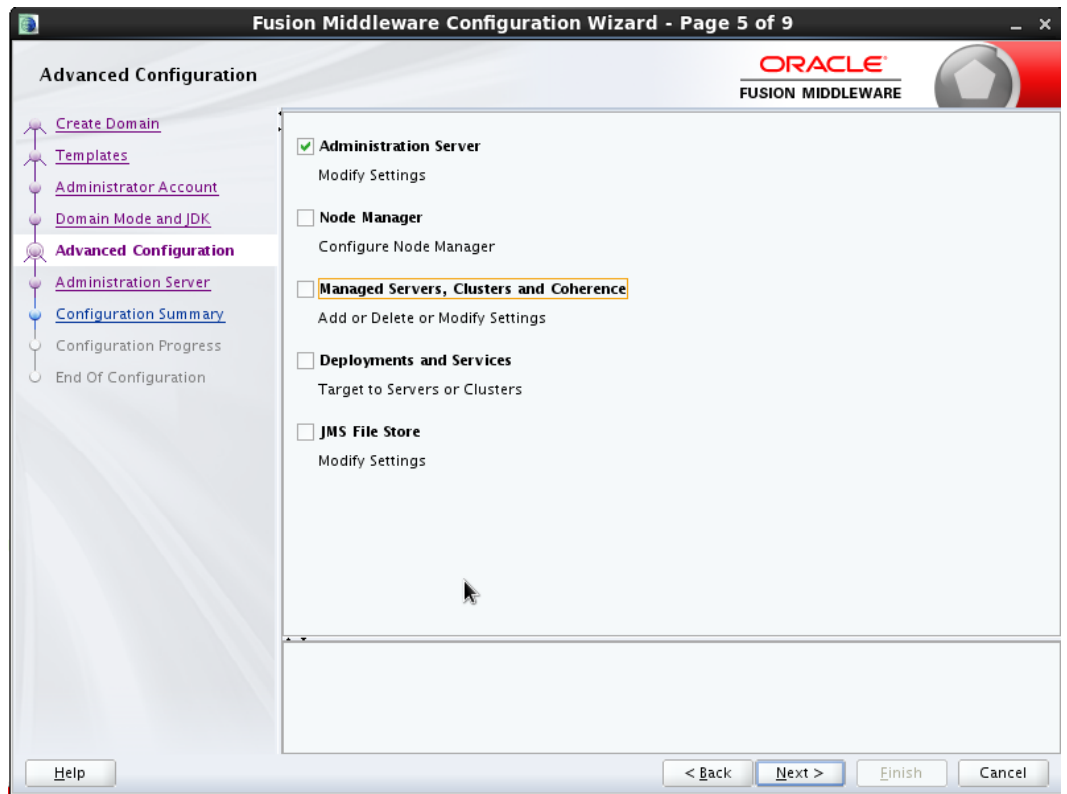


When creating a new domain select at least the options as shown below.

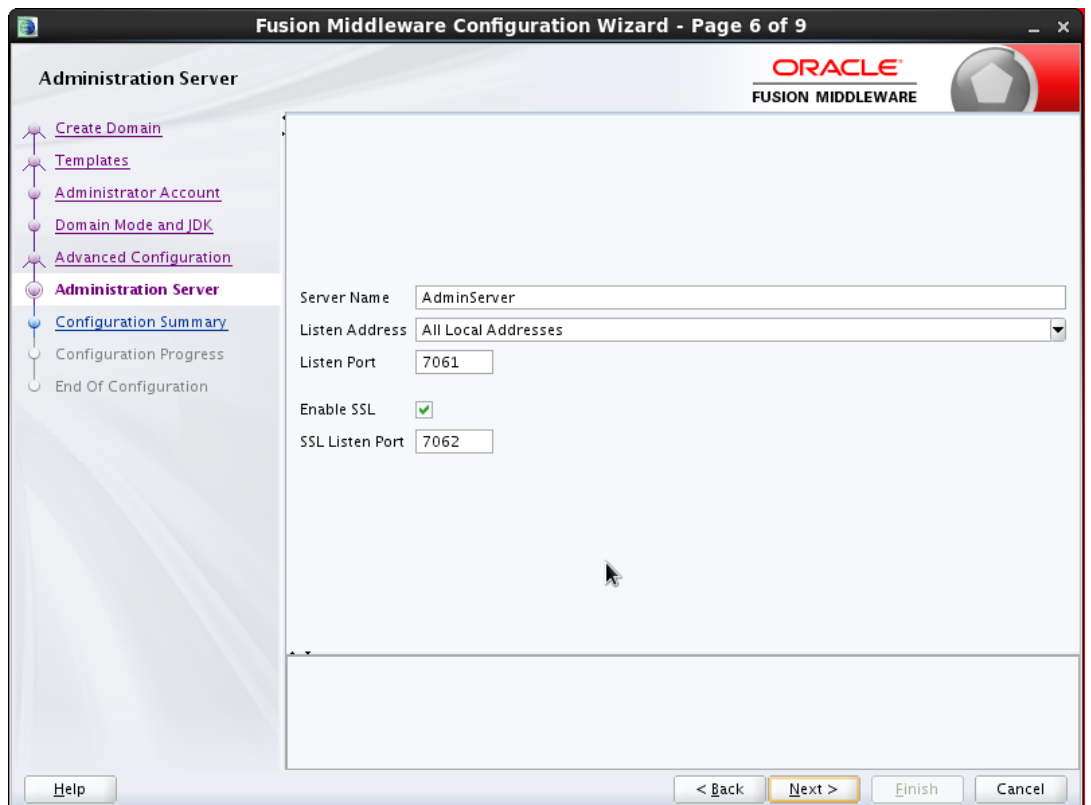


In the next screens, specify the *username* and *password* for the domain administrator account. When prompted for developer or production mode choose *production mode* and pick a JDK.

In this documentation we choose to configure only the Administration Server using the wizard. The Administration Server can be used as the starting point for additional configuration options you may want to choose later:



For the Administration Server a free port number must be specified. Enable SSL to support secure connections. An example using non default ports is shown below.

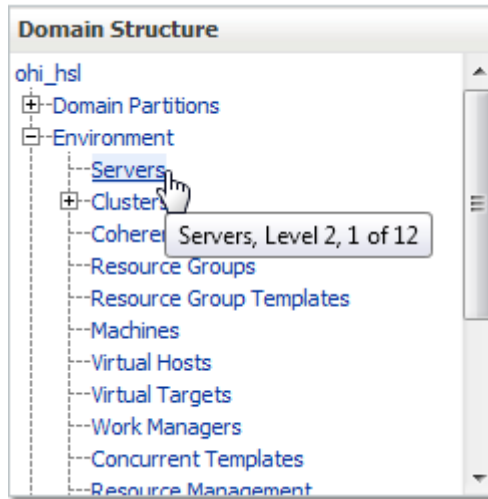


### 3.4.3 Creating Managed Server(s)

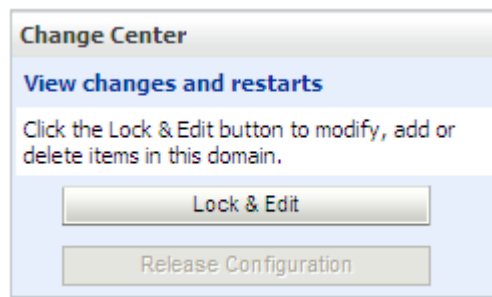
Start the Administration Server (of the existing or newly created domain) using the startWebLogic.sh script (this is present in the root folder of the domain folder, which you created through the Configuration Wizard).



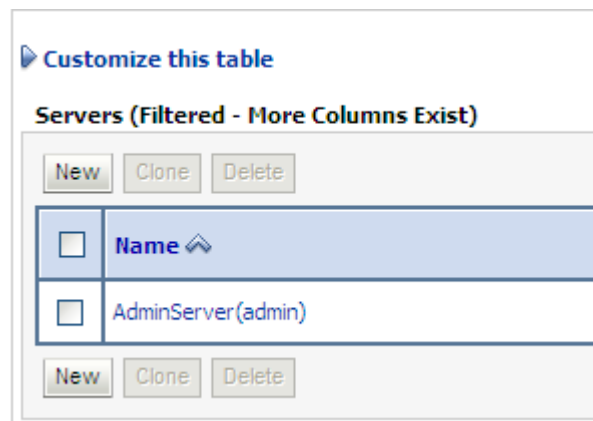
When it is started logon to the console and choose the Servers option in the left panel:



In the Change Center choose Lock & Edit to get into editing mode.



This enables the New option in the 'Summary of Servers' overview:



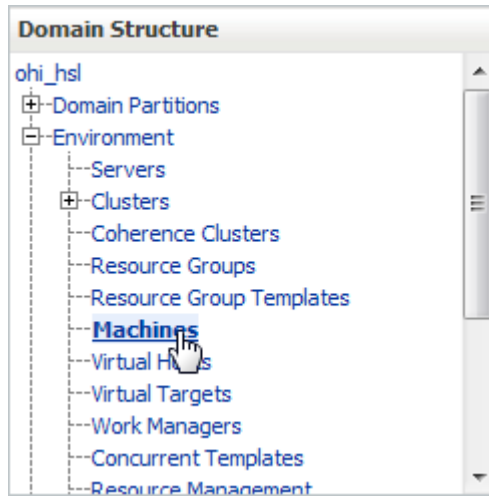
You need to provide a name and listening port for the Managed Server. For easy reference you may want to include the domain name in the name of the Managed Server, for example 'ms\_ohi\_HSL'.

At this point you should decide whether or not to make the Managed Server part of a Cluster.

If no Cluster exists you can create one; if there is an existing Cluster you can make the Managed Server a member of the Cluster.

### 3.4.4 Creating a machine definition

It is recommended to create a machine definition to make it easier to start up Managed Servers:



You can now assign Managed Servers to the new machine definition. In the example below Managed Server `ms_ohi_HSL` is assigned to `Machine1`.

<input type="checkbox"/>	<code>ms_ohi_hsl</code>	Configured		Machine1
--------------------------	-------------------------	------------	--	----------

If you start a Node Manager you can use the console to start the Managed Servers.

You need to associate the machine with the Node Manager so that the Node Manager can start the Managed Server within the domain of the machine definition.

Do this in the Node Manager tab for the machine definition like in the example below:

**Settings for Machine1**

Configuration | Monitoring | Notes

General | **Node Manager** | Servers

Save

This page allows you to define the Node Manager configuration for this machine. To control a Managed Server from Node Manager must be configured and running on the machine where the Managed Servers are installed.

The settings defined on this page are used to configure communication between the current domain and Node Manager that control Managed Servers. This page does not control the configuration of the Node Manager instances.

**Type:** SSL Returns the node manager type.

**Listen Address:** ol6ohi The host name or IP address where Node Manager listens for connection requests. [Info...](#)

**Listen Port:** 5557 The port number where Node Manager listens for connection requests. [More Info...](#)

**Node Manager Home:** Returns the node manager home directory that will be used to substitute for `%HOME%` in the command template. [More Info...](#)

Make sure the listen address is the actual listen address that is used by the Node Manager. This is passed as first parameter to the `$WL_HOME/server/bin/startNodeManager.sh` shell script. The correct value can be found as `ListenAddress` in the file `nodemanager.properties`.

This address can be changed in the file `nodemanager.properties` which is located in the `<domain home>/nodemanager` folder. This is necessary when you have a node manager per domain.

You need to create a `boot.properties` file for the new Managed Server for the domain in the domain home Managed Server `../data/nodemanager`.

This is done automatically when you start the Managed Server in the console (after you have started the AdminServer for the domain).

When you are running in Development Mode, a `boot.properties` file is automatically created for the AdminServer.

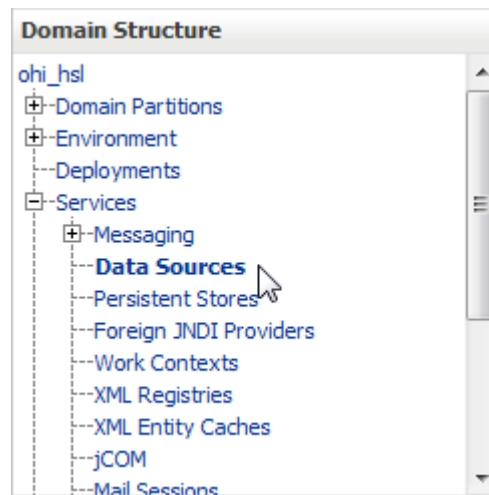
Because you are running in Production Mode, you need to create the file yourself, in the `$DOMAIN_HOME/servers/AdminServer/security` folder. This file is used when the AdminServer is started by the script `startWebLogic.sh`. If the file is not present, the script prompts for the username/password. The same goes for the Managed Servers when you start them through a script.

### 3.4.5 Creating a data source

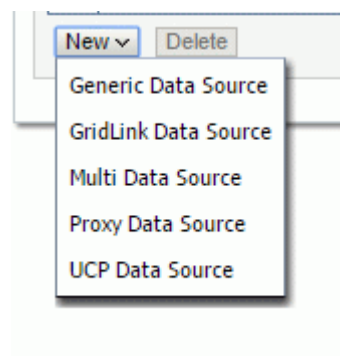
---

The HSL application needs a data source to connect with the OHI Back Office database.

To create a data source, navigate in the Domain Structure panel on the left to the data sources option. Choose 'Lock & Edit' so you are able to create a new data source.



Create a new 'Generic data source':

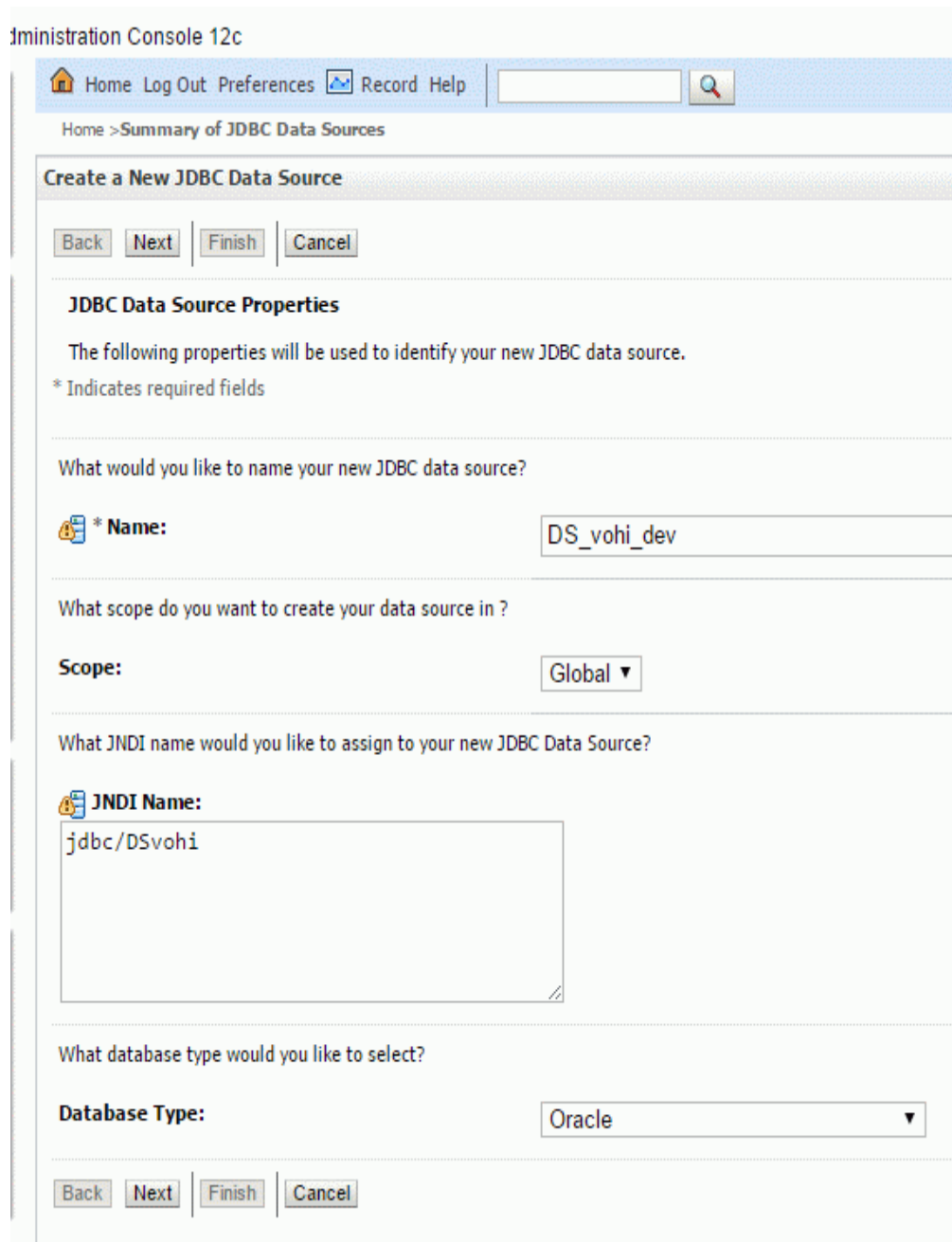


Choose a name for the data source to reflect its purpose. For example, you may want to reference the database name: `DS_OHI_prd`.

Next specify a JNDI name. The JNDI name will be used in the properties file for starting the HSL application.

Specify 'Oracle' as the database type.

An example:



Administration Console 12c

Home Log Out Preferences Record Help

Home > Summary of JDBC Data Sources

### Create a New JDBC Data Source

Back Next Finish Cancel

#### JDBC Data Source Properties

The following properties will be used to identify your new JDBC data source.

\* Indicates required fields

What would you like to name your new JDBC data source?

**Name:** DS\_vohi\_dev

What scope do you want to create your data source in ?

**Scope:** Global

What JNDI name would you like to assign to your new JDBC Data Source?

**JNDI Name:** jdbc/DSvohi

What database type would you like to select?

**Database Type:** Oracle

Back Next Finish Cancel

Next you need to specify a database driver. Use "Oracle's Driver (Thin) for Service connections; Versions: Any". If you are using RAC (or considering to use RAC) choose the thin RAC driver. Do not use the XA driver.

Home > Summary of Machines > ol6ohi.ohi.oracle.com > Summary of JDBC Data Sources

**Create a New JDBC Data Source**

Back Next Finish Cancel

**JDBC Data Source Properties**

The following properties will be used to identify your new JDBC data source.

**Database Type:** Oracle

What database driver would you like to use to create database connections? Note: \* indicates that the driver is explicitly supported by Oracle WebLogic Server.

**Database Driver:**

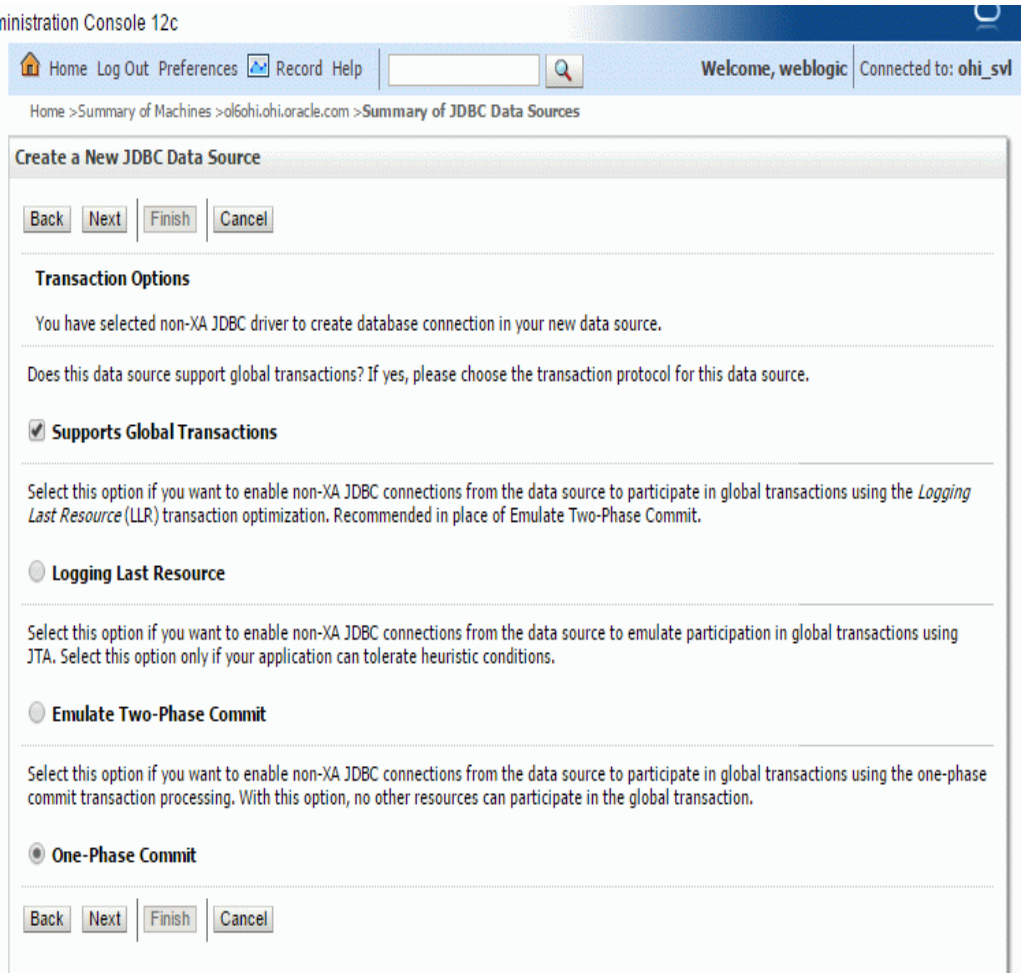
- \*Oracle's Driver (Thin) for Service connections; Versions:Any
- \*Oracle's Driver (Thin XA) for Application Continuity; Versions:Any
- \*Oracle's Driver (Thin XA) for Instance connections; Versions:Any
- \*Oracle's Driver (Thin XA) for RAC Service-Instance connections; Versions:Any
- \*Oracle's Driver (Thin XA) for Service connections; Versions:Any
- \*Oracle's Driver (Thin) for Application Continuity; Versions:Any
- \*Oracle's Driver (Thin) for Instance connections; Versions:Any
- \*Oracle's Driver (Thin) for RAC Service-Instance connections; Versions:Any
- \*Oracle's Driver (Thin) for Service connections; Versions:Any
- \*Oracle's Driver (Thin) for pooled instance connections; Versions:Any
- DataDirect's Oracle Driver (Type 4 XA) Versions:Any
- DataDirect's Oracle Driver (Type 4) Versions:Any
- Other

Back Next Finish Cancel

Choose the following Transaction Options:

- 'Supports Global Transactions';
- 'One-Phase Commit' (this is why you don't need the XA driver)

Example:



Next specify the connection details like the example on the page below. Be sure to use values which are valid for your environment.

**Create a New JDBC Data Source**

Back Next Finish Cancel

**Connection Properties**  
Define Connection Properties.

What is the name of the database you would like to connect to?

**Database Name:**

What is the name or IP address of the database server?

**Host Name:**

What is the port on the database server used to connect to the database?

**Port:**

What database account user name do you want to use to create database connections?

**Database User Name:**

What is the database account password to use to create database connections?

**Password:**

**Confirm Password:**

Additional Connection Properties:

**oracle.jdbc.DRCPConnectionClass:**

Back Next Finish Cancel

On the next page the result of your answers will be shown. You can test the connection with the data shown (the table name is not relevant).

When you navigate to the next page you can select the targets where the data source should be deployed to. In the example below only the Managed Server shown will be used for deploying the data source to.

**Servers**

AdminServer

ms\_ohi\_hsl

Back Next Finish Cancel

Press Activate Changes to conclude your configuration.

At this point, go back to your data source and re-open the connection pool tab.

Navigate to the 'Advanced' part.

Ensure that the option 'Wrap Data Types' is unchecked. This setting is needed for passing CLOB objects to and from the database and when activated slows down execution. Press Lock & Edit and uncheck this option and Save and Activate the change.

Example:



## 3.5 Security Configuration

All HSL applications are preconfigured to use basic authentication and SSL encryption.

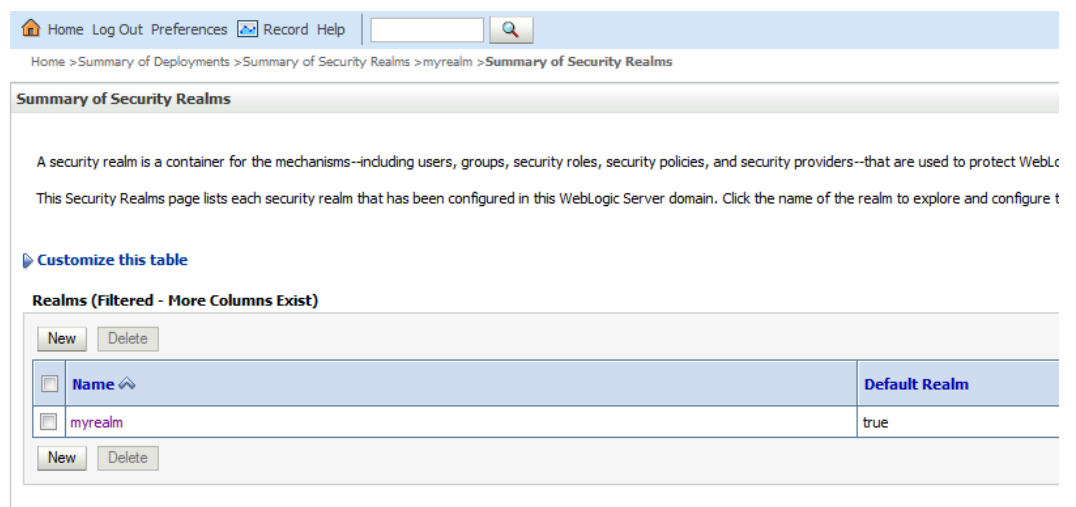
The following steps are needed to set up minimal security for the HSL application:

- Set up security realm
- Setup Weblogic user for accessing HSL application
- Enable SSL
- Configure JSSE
- Configure key store
- Configure logging level
- Configure user lockout

### 3.5.1 Set up security realm

Create a security realm if this has not already been done (normally realm 'myrealm' will already be present).

The security realm 'myrealm' as shown below will be used to configure the security at application level.

A screenshot of the 'Summary of Security Realms' page in a WebLogic console. The page has a navigation bar at the top with links for Home, Log Out, Preferences, Record, and Help. Below the navigation bar is a breadcrumb trail: Home > Summary of Deployments > Summary of Security Realms > myrealm > Summary of Security Realms. The main content area is titled 'Summary of Security Realms' and contains a paragraph explaining that a security realm is a container for mechanisms like users, groups, security roles, security policies, and security providers. Below this is a link to 'Customize this table'. A table titled 'Realms (Filtered - More Columns Exist)' is displayed, showing a single entry for 'myrealm' with a 'Default Realm' status of 'true'. The table has columns for 'Name' and 'Default Realm'. There are 'New' and 'Delete' buttons above and below the table.

If there are no other security realms, this will be the default security realm.

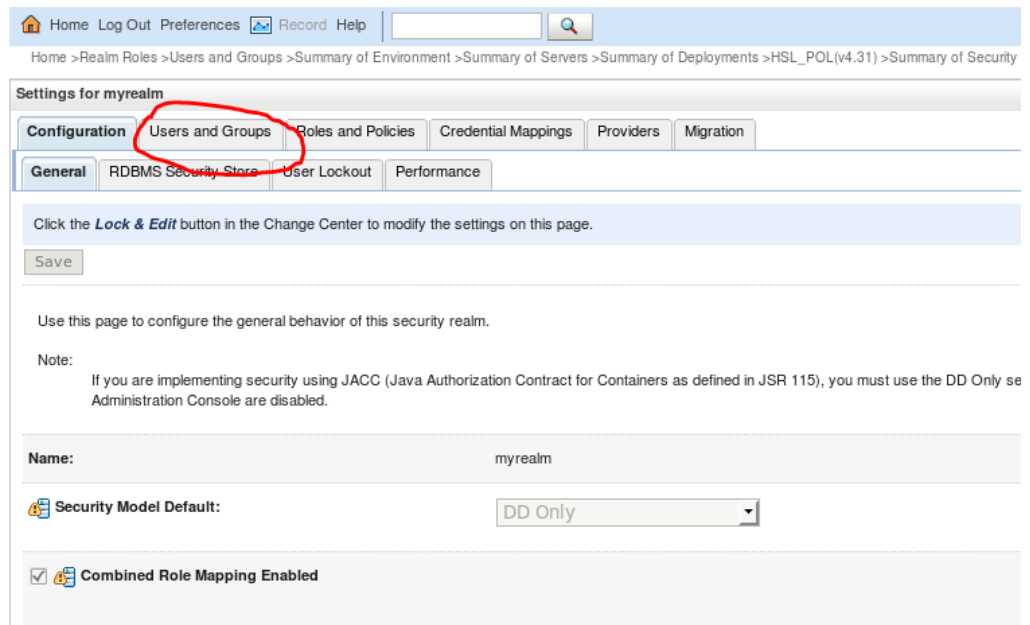


### 3.5.2 Setup Weblogic user for accessing HSL application

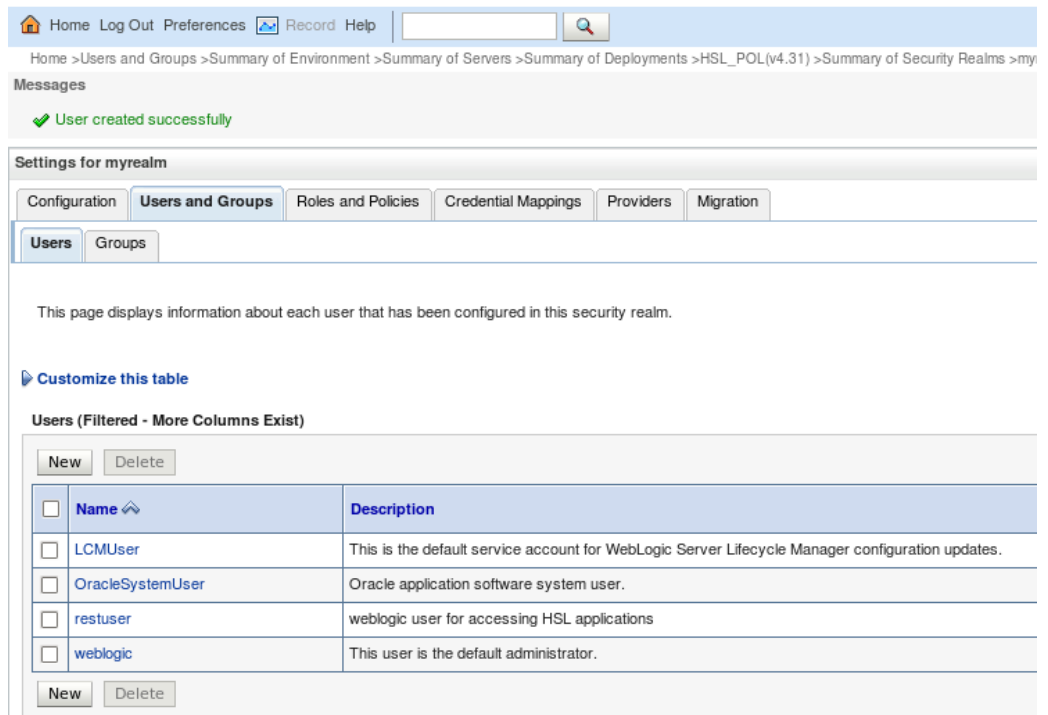
Each operation of an HSL application requires basic authentication. This means that each call must be made as an authenticated Weblogic user. The name of the Weblogic user to access the HSL application is defined in a preconfigured deployment descriptor in the WAR file. This default name is 'restuser'.

So if you deploy the HSL application with the default security model (DDOnly) you will need to create the Weblogic user 'restuser' and authenticate as 'restuser' when invoking the HSL application.

To set up the Weblogic user 'restuser', select 'Users and Groups' for your security realm:



Add 'restuser' to the pool of Weblogic users:



Note that if you do not want to authenticate an HSL application using the predefined weblogic user 'restuser', you can choose to deploy using 'Custom Roles and Policies'. See 'Additional Security Aspects' below.

### 3.5.3 Enable SSL

The HSL services are preconfigured to use a default policy which uses SSL. Therefore you need to enable SSL for every Managed Server to which you deploy the HSL application.

Go to the Managed Server configuration and enable SSL in the 'Configuration > General' tab:

The screenshot shows the 'Settings for ms\_ohi\_hsl' configuration page. The 'General' tab is selected, and the 'SSL Listen Port Enabled' checkbox is checked and highlighted with a red box. The 'SSL Listen Port' is set to 7064. Other settings include 'Listen Port' set to 7063, 'Machine' set to 'Machine1', and 'Cluster' set to '(Stand-Alone)'. The 'Listen Address' is 'localhost'. The 'Java Compiler' is 'javac', and the 'Diagnostic Volume' is 'Low'. The 'Default Datasource' is empty. The 'Advanced' section is collapsed.

### 3.5.4 Configure JSSE

To use SSL with WebLogic you need to configure the use of Java Secure Socket Extension (JSSE) as this is the only supported SSL implementation. The RSA JSSE provider is not installed as part of Weblogic Server since WLS 12.1.1 (a previous implementation was in WLS 11g) but needs to be provided by the JVM.

It depends on the JDK version whether additional configuration action is required.

For more generic information about Oracle's JDK and JRE cryptographic algorithms please visit: [https://www.java.com/en/configure\\_crypto.html](https://www.java.com/en/configure_crypto.html)

For more information regarding the changes in the specific JDK 8 releases as mentioned below:

<http://www.oracle.com/technetwork/java/javase/8all-relnotes-2226344.html>

#### ..3.5.4.1 *JDK 1.8.0\_162 and above*

No action is needed.

#### ..3.5.4.2 *JDK 1.8.0\_151 .. 1.8.0\_161*

Only a small configuration change in your JDK is required.

Uncomment the following line in <JDK\_HOME>/jre/lib/security/java.security:

```
#crypto.policy=unlimited
```

Remove the hash (#) from this line to enable the RSA JSSE provider.

#### ..3.5.4.3 *Below JDK 1.8.0\_151*

To configure the use of RSA JSSE, follow the instruction at [Using the RSA JSSE Provider in WebLogic Server](#) in paragraph “Using the RSA JSSE Provider in WebLogic Server”.

The installation means that you have to replace two jar files within the JDK installation that is used by WebLogic. These files are JDK version specific and contain the stronger encryption methods that are needed.

As summarized during an OHI presentation:

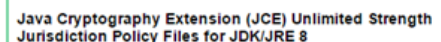
## SVL domain creation – JSSE continued

- Lot of text: what is meant?

- Download zip with JSSE implementation

- <http://www.oracle.com/technetwork/java/javase/downloads/index.html>

- Unzip download (/tmp ?)



Java Cryptography Extension (JCE) Unlimited Strength Jurisdiction Policy Files for JDK/JRE 8

DOWNLOAD

- replace 2 files in the JDK 8 install (as root!), i.e.:

- ```
cd /usr/java/jdk1.8.0_102/jre/lib/security
cp /tmp/UnlimitedJCEPolicyJDK8/local_policy.jar .
cp /tmp/UnlimitedJCEPolicyJDK8/US_export_policy.jar .
```

- Adapt file in same folder:  

```
vi java.security
```

- Add new first line: 

```
security.provider.1=com.rsa.jsse.JsseProvider
```

- Resequence existing lines from 2..10

Typically the name of the downloaded file will be `jce_policy-8.zip`.

### 3.5.5 Setting up a key store

For testing purposes you may want to use the built-in keystore as shown below in the ‘Configuration > Keystores’ tab for the Managed Server:

Settings for ms\_ohi\_hsl

Configuration Protocols Logging Debug Monitoring Control Deployments Services Security Notes

General Cluster Services **Keystores** SSL Federation Services Deployment Migration Tuning Overload Concurrency Health Monitoring

Click the **Lock & Edit** button in the Change Center to modify the settings on this page.

Save

Keystores ensure the secure storage and management of private keys and trusted certificate authorities (CAs). This page lets you view and define various keystore configurations.

**Keystores:** Demo Identity and Demo Trust

— Identity —

**Demo Identity Keystore:** C:\Orade\welogic\_12c\user\_projects\domains\ohi\_hsl\security\DemoIdentity.jks

**Demo Identity Keystore Type:** jks

**Demo Identity Keystore Passphrase:**

— Trust —

**Demo Trust Keystore:** C:\Orade\WEBLOG~1\wserver\server\lib\DemoTrust.jks

**Demo Trust Keystore Type:** jks

**Demo Trust Keystore Passphrase:**

**Java Standard Trust Keystore:** C:\PROGRA~1\Java\JDK18~1.0\_7\jre\lib\security\cacerts

**Java Standard Trust Keystore Type:** jks

**Java Standard Trust Keystore Passphrase:**

**Confirm Java Standard Trust Keystore Passphrase:**

Save

Click the **Lock & Edit** button in the Change Center to modify the settings on this page.

**Note that in a production environment it is not safe to use the demo keystore.**

For more information about configuring keystores please read the WebLogic documentation. As a starter you can use this address: [Oracle® Fusion Middleware Administering Security for Oracle WebLogic Server 12.2.1 - 29 Configuring Keystores](#)

It contains references to pages which describe in more detail how to obtain private keys, digital certificates, etc.

You should take action and not rely on the demo keystore!

### 3.5.6 Configure Managed Server logging level

The standard logging level for a Managed Server regarding security issues is intentionally non-informative to discourage fraudulent users.

A typical security-related error message looks like:

*Got 'Unknown exception, internal system processing error.'*

If you are trying to setup the HSL application to work with SSL and basic authentication in a non-production environment you can configure verbose logging with the following start parameter for the Managed Server:

```
-Dweblogic.wsee.security.debug=true
```

Depending on the way you start your Managed Servers, this has to be added in the following locations:

- Using the Admin Console, navigate to the Managed Server, Tab "Server Start", field "Arguments". Add

```
-Dweblogic.wsee.security.debug=true
```

- In the file `$DOMAIN_HOME/bin/startManagedWebLogic.sh`, find the first line that starts with `JAVA_OPTIONS=`. Immediately before that line, add lines like these:

```
# Custom Setting for ms_ohi_HSL to use JSSE and set debug level
for SSL:
JAVA_OPTIONS="-Dweblogic.wsee.security.debug="true"
${JAVA_OPTIONS}"
```

NOTE: The entries in Server Start field Arguments are used when the server is started through the Node Manager (they are stored in a startup.properties file stored in the data/nodemanager subfolder of the Managed Server).

When you implement the changes in the shell script they will only be used when the Managed Server is started through the startup script which means when you use the Node Manager you need to make sure the nodemanager.properties contains

```
weblogic.StartScriptEnabled=true.
```

Restart the Managed Server to get the new verbose messages later on.

### 3.5.7 Set user lockout

While setting up HSL services for testing you may want to disable user lockout. In a production environment you should enable user lockout to discourage fraudulent use. Navigate to the Security Realm and use the 'Configuration > User Lockout' tab.

Home > Summary of Deployments > Summary of Security Realms > myrealm > Summary of Security Realms > myrealm

Settings for myrealm

Configuration Users and Groups Roles and Policies Credential Mappings Providers Migration

General RDBMS Security Store **User Lockout** Performance

Save

Password guessing is a common type of security attack. In this type of attack, a hacker attempts to log in to a computer using various co security realm.

Lockout Enabled

Lockout Disabled

Lockout Threshold: 5

Lockout Duration: 30

Lockout Reset Duration: 5

Lockout Cache Size: 5

Lockout GC Threshold: 400

Save

## 3.6 (Re)deployment of the HSL Application

HSL applications are deployed through WAR (Web Application Archive) files. Each HSL service application has its own WAR file, for example HSL\_POL.war or HSL\_REL.war.

The WAR file of a HSL application resides in the \$OZG\_BASE/java directory on the application server containing the OHI Back Office software release. You can copy this to another location if required.

Ensure that the .war file is located on the WLS Admin Server host (this is the server running the WLS Administration Console).

Note that you cannot use an older WAR file with a newer OHI Back Office release and vice versa.

The following scenarios are discussed:

- Deploy to a single Managed Server
- Deploy to multiple Managed Servers
- Deploy to a cluster
- Deploy for DTAP (development, test, acceptance, production)

### 3.6.1 Deploy to a single Managed Server

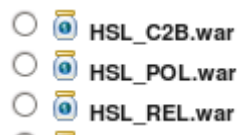
---

In the Domain Structure pane, select the Deployments branch. This will show the applications that have already been deployed

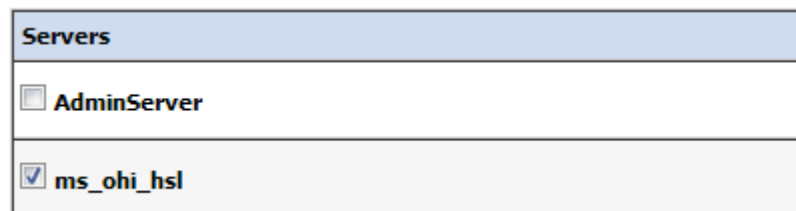
If you want to shorten this list, use 'Customize this table' to exclude the libraries.

Select 'Lock & Edit' to enter editing mode, this will enable the 'Install' button which you need to use next.

In the new window, locate the .war files on the WLS server, select it and press 'Next':



Select 'Install this deployment as an application', press 'Next' and select the target(s) for deployment. In the example below only Managed Server ms\_ohi\_hsl is chosen.



Press 'Next' and decide about a deployment name and security model. At this moment the version of the .war file is also shown (can contain up to 4 digits like any application source).

**Install Application Assistant**

Back Next Finish Cancel

**Optional Settings**

You can modify these settings or accept the defaults.

\* Indicates required fields

**General**

What do you want to name this deployment?

\* Name:

Archive Version: v4.5

Deployment Plan Version:

**Security**

What security model do you want to use with this application?

DD Only: Use only roles and policies that are defined in the deployment descriptors.

Custom Roles: Use roles that are defined in the Administration Console; use policies that are defined in the deployment descriptor.

Custom Roles and Policies: Use only roles and policies that are defined in the Administration Console.

Advanced: Use a custom model that you have configured on the realm's configuration page.

**Source Accessibility**

How should the source files be made accessible?

Use the defaults defined by the deployment's targets

Recommended selection.

Copy this application onto every target for me

During deployment, the files will be copied automatically to the Managed Servers to which the application is targeted.

I will make the deployment accessible from the following location

Select 'Custom Roles' if you want to use the default policy and create your own roles to restrict access to the web services. Select 'Custom Roles and Policies' if you want to overrule the default of each web service.

Regarding source accessibility, select 'Copy this application....' if you want to remove the WAR file from its current location.

Finish the configuration.

Beware that - in Production mode - you need to Activate your changes in order to enable the web services. At that moment the deployment will show status 'Prepared'.

By selecting the deployment in the Control tab and pressing Start → Servicing all requests the State will change to 'Active' (assuming your Managed Server is in 'Running' state).

Before using the web services implement the following actions as described below. These actions have to be executed only once. There is no need to repeat them when you update the deployment or delete and install it again.

- ✓ Navigate to the Managed Server tab 'Server Start' and specify a properties file in the Arguments field like the first line shown below:

**Arguments:**

```
-Dhsl.properties=/ohi/envBase/BTSPC03/ohiBase/conf/hsl.properties
```

**Example:**

```
-Dhsl.properties=/ohi/envBase/BTSPC03/ohiBase/conf/hsl.properties
```

This example uses a properties file with the name hsl.properties which is located in the \$OZG\_BASE folder of your OHI Back Office application server environment, but you can also specify the default name: the \$OZG\_BASE folder and hsl.properties.

The contents of this file is discussed in a separate chapter ('Configuration files for web services').

NOTE: make sure you keep all the arguments in the field on ONE line and keep a space between the settings; and when you do not use the Node Manager implement these changes in the startup script (see earlier this chapter as well as a few paragraphs further the JAVA\_OPTIONS discussion).

When completed, (re)start the Managed Server. Check in the <ManagedServer>.out file in the logs folder of your Managed Server whether the command line contains the arguments as specified above.

If the file specified by hsl.properties cannot be read , messages as below will show up:

```
ERROR: logfile could not be set because of: null
```

**ATTENTION:**

If you want to start up a single Managed Server without using the Node Manager or the Admin Console (which tries to involve the Node Manager) you will typically use the script startManagedWebLogic.sh in \$DOMAIN\_HOME/bin. In order to have the correct settings for the server enabled you need to set the JAVA\_OPTIONS environment variable before starting the managed server.

An example when the current location is the bin folder of the WLS domain and your managed server is named ms\_ohi\_hsl:

```
export JAVA_OPTIONS="-Dhsl.properties=/ohi/envBase/BTSPC03/ohiBase/conf/hsl.properties"
```

Now you can start the Managed Server with the command below (assuming your location is the \$DOMAIN\_HOME/bin folder):

```
./startManagedWebLogic.sh ms_ohi_hsl http://localhost:7061
```

The example above contains the Managed Server's name as first parameter and the listen address of the Admin Server of the domain as second parameter.

To make these changes permanent, put them in the file

\$DOMAIN\_HOME/bin/startManagedWebLogic.sh: find the first line that starts with JAVA\_OPTIONS= . Immediately before that line, add these lines:

```
JAVA_OPTIONS="-Dhsl.properties=/ohi/envBase/BTSPC03/ohiBase/conf/hsl.properties"
${JAVA_OPTIONS}"
```



When startup times of your service calls are important and the security of the connection is less important you may consider to specify an alternative for retrieving cryptographically strong random numbers:

```
# decrease startup times
JAVA_OPTIONS="-Djava.security.egd="file:/dev/./urandom"
${JAVA_OPTIONS}"
```

### 3.6.2 Deploy to multiple Managed Servers

---

You may deploy the application to more than one target.

Example: if you choose to target the application to Managed Servers MS1 and MS2, the application will be available on separate end points. The URLs of these end points will only differ in port number.

If you choose this rather unlikely scenario, be aware that each Managed Server should have different startup parameter values (hsl.properties).

### 3.6.3 Deploy to cluster

---

You may deploy the application on all the Managed Servers of a cluster. This may be needed for better scalability. Be aware to use some form of load balancing to allow the use of a single end point.

The best way to implement this type of deployment depends on your specific situation.

If you are planning a load balanced environment with multiple Managed Servers in a cluster it is vital that the configuration of every Managed Server is aligned with the others.

If you deploy to the cluster, it is recommended to redirect the logging of all Managed Servers to a single file.

### 3.6.4 Deploy for multiple environments (DTAP)

---

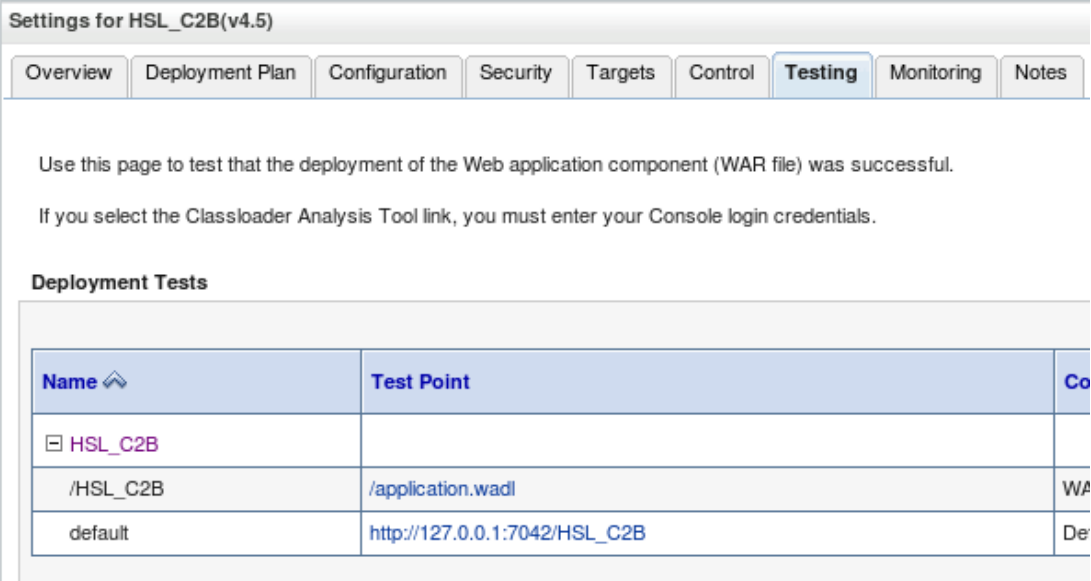
If you use several OHI-related environments to support the various DTAP (Develop-Test-Accept-Production) stages you may want to have different versions of the HSL application running at the same time.

To implement this you need to:

- Create a Managed Server for each of the DTAP stages.
- Create a data source from each Managed Server to its corresponding OHI Back Office database.
- Create an hsl.properties file for each Managed Server.
- Configure each Managed Server to start up with the appropriate hsl.properties.
- Deploy the appropriate version of the HSL application to its corresponding Managed Server and give it a unique deployment name to identify its deployment.

### 3.6.5 Publishing the deployed services

After you have deployed the web services, perform a small test using the test URL as provided in the Admin Console (only available for domains that run in Development Mode).



Settings for HSL\_C2B(v4.5)

Overview | Deployment Plan | Configuration | Security | Targets | Control | **Testing** | Monitoring | Notes

Use this page to test that the deployment of the Web application component (WAR file) was successful.

If you select the Classloader Analysis Tool link, you must enter your Console login credentials.

**Deployment Tests**

| Name                             | Test Point                    | Co |
|----------------------------------|-------------------------------|----|
| <input type="checkbox"/> HSL_C2B |                               |    |
| /HSL_C2B                         | /application.wadl             | WA |
| default                          | http://127.0.0.1:7042/HSL_C2B | De |

You can find the definition for each service using the following URL:

The format of the service URL is

```
<servername>:<port>/<application>/api/swagger.json
```

For example:

```
https://localhost:7064/HSL_C2B/api/swagger.json
```

## 3.7 Additional Security Aspects

Since HSL services provide an additional channel to access OHI Back Office data, you must prevent unauthorized use of the HSL applications.

Please consult the 'Oracle Health Insurance Security Aspects' guide for more information about OHI Back Office security aspects.

In order to prevent the exposure of sensitive data or unauthorized changes to the OHI Back Office data, access of the HSL applications should be limited to trusted systems and interfaces. Otherwise people in your organization might be tempted to try to misuse the functionality provided by the HSL services.

All HSL services are configured to use basic authentication as a minimal policy to reduce the risk of unauthorized access and network sniffing. Basic authentication requires HTTPS communication and providing username/password with each call.

The preconfigured deployment descriptor in the HSL applications requires authentication by a Weblogic user 'restuser'. See the instructions for creating this user in 'Security Configuration' above.

By deploying HSL application with a custom security policy, you can overrule the use of the standard 'restuser'.

It is your responsibility as an administrator to secure the HSL services within your organization.

This paragraph provides some pointers to get started:

- Deploying HSL Application for use with any weblogic user
- Using a custom security policy for a deployed application

### 3.7.1 Deploying HSL Application for use with any weblogic user

---

If you want to deploy a HSL application for use with another weblogic user than the default 'restuser', you should deploy with the security model 'Custom Roles and Policies':

**Install Application Assistant**

Back Next Finish Cancel

**Optional Settings**

You can modify these settings or accept the defaults.

\* Indicates required fields

**General**

What do you want to name this deployment?

\* Name:

Archive Version: v4.5

Deployment Plan Version:

**Security**

What security model do you want to use with this application?

DD Only: Use only roles and policies that are defined in the deployment descriptors.

Custom Roles: Use roles that are defined in the Administration Console; use policies that are defined in the deployment descriptor.

Custom Roles and Policies: Use only roles and policies that are defined in the Administration Console.

Advanced: Use a custom model that you have configured on the realm's configuration page.

**Source Accessibility**

How should the source files be made accessible?

Use the defaults defined by the deployment's targets

Recommended selection.

Copy this application onto every target for me

You can now use any weblogic user to access the HSL application.

### 3.7.2 Using a custom security policy for a deployed application

---

The Weblogic console allows the administrator to specify a custom security policy for HSL applications deployed using 'Custom Roles and Policies'. For example, a custom security policy can be used:

- to limit access to a specified list of named Weblogic users; or
- to limit access to a group of Weblogic users; or
- to limit access to Weblogic users with a specific role;
- or a combination of the above.

While preparing the 1.5 version of this manual we found that WLS 12c 12.2.1.2.0 allows the creation of custom security policies but does NOT enforce these policies at runtime.

Effectively this means that ANY Weblogic user may access a HSL application deployed with 'Custom Roles and Policies'.

## 4 Deployment validation

Especially when deploying a HSL application for the first time, it makes sense to validate that the HSL application is in working order.

Before you begin, check in WLS console that the deployment status of the HSL application is active.

The following validation tests can be performed by the administrator:

- Template Listing
- getDatabaseInfo operation
- Get Online Swagger definition

Apart from the template listing, each of the validations requires a JDBC connection between the HSL application and the OHI BO database, so you are not only testing the deployment itself but also the integration between the HSL application and the OHI database.

If a validation test fails see the paragraph 'Troubleshooting' below to find and resolve the problem.

The validation tests described below assume that you test with 'curl'.

### 4.1 Testing with Curl

An operation of the HSL application can be invoked with many HTTP client tools. One of these tools is curl, which is present on any Linux/Unix server. Assuming that you have terminal access to the Linux server running WLS, curl is a good tool to run the deployment validation tests.

Use 'curl --version' to check the curl version. Ensure that you are running curl 7.35.0 or higher as that supports the required SSL implementation.

A typical invocation of a HSL operation using curl would look like this

```
curl -D - -X <verb> -k -H Accept:application/json --user <user> <url>
```

Explanation of the used options and placeholders:

- -D -  
Dump response headers to stdout
- -X <verb>  
add HTTP verb (GET/PUT/POST/PATCH/DELETE)
- -k  
Allow curl to run HTTP requests without checking SSL certificates.
- -H Accept:application/json  
Add request header to require a response in application/json format. This is required for every HSL operation.
- --user <user>  
The username of the WLS user used for Basic Authentication.

The <user> must refer to an existing WLS user.  
 Note that curl will prompt for a password if it is not given at the command line.

- <url>  
 The path to the HSL operation.

The url format is <https://server:port/application/path> where

|                    |                                                                                                                                                                             |
|--------------------|-----------------------------------------------------------------------------------------------------------------------------------------------------------------------------|
| <b>server</b>      | <b>This must be one of the managed servers listed in WLS console as an active target for the HSL application.</b>                                                           |
| <b>port</b>        | The SSL port of the managed server running the HSL application.<br><br>Every HSL operation requires SSL and Basic Authentication.                                           |
| <b>application</b> | This is the name of the HSL application as listed on the WLS deployment page.<br><br>For example, HSL_POL, HSL_REL, or HSL_C2B.                                             |
| <b>path</b>        | The path to this operation.<br>Each operation is uniquely identified by a <path> + <verb> combination.<br><br>Path examples: '/dbinfo' or 'templates' or 'api/swagger.json' |

In the following example, a template listing is requested from the HSL\_POL application on the local WLS host running a managed server at port 7094:

```
curl -D - -k --user restuser -H Accept:application/json
https://localhost:7094/HSL_POL/templates
```

## 4.2 Template Listing

This operation lists the templates which were used to generate the Java code for the HSL application. The listing itself is irrelevant, but since the operation does not require a JDBC connection with the OHI BO database, it is the simplest of all deployment tests. If it fails the remaining deployment tests will also fail.

The template listing is invoked through

```
https://server:port/application/templates
```

In the following example we retrieve the template listing through curl for the HSL\_POL application. It is assumed that we run curl locally on the WLS server and that the managed server running the HSL application can be accessed through SSL port 7094.

```
curl -k -H Accept:application/json --user restuser
https://localhost:7094/HSL\_POL/templates
```

The output is a JSON object listing template files and template versions used to generate the Java code for the HSL application.

## 4.3 getDatabaseInfo

This operation provides information about the database connection between the HSL application and the OHI BO database.

If you are familiar with OHI BO's SVL services, note that the getDatabaseInfo

operation is comparable with the 'isAlive' operation implemented in every SVL service.

This operation requires a working database connection and invokes the PL/SQL implementation package specific to the HSL application.

The `getDatabaseInfo` operation is invoked through

```
https://server:port/application/dbinfo
```

In the following example the `getDatabaseInfo` of the HSL\_POL application running on SSL port 7094 on our local WLS host is invoked through curl.

```
curl -k -H Accept:application/json --user restuser  
https://localhost:7094/HSL_POL/dbinfo
```

The output is a JSON object with information about the database connection and the PL/SQL package implementing the HSL application in the OHI BO database:

```
{  
  "basePath": "https://localhost:7094/HSL_POL/pol",  
  "database": "BDDEV1722",  
  "instance": "CDB02",  
  "jndiName": "HSL_BDDEV1722",  
  "plsqlPackage": "hsl_pol_sp_pck $Revision: 4.21 $",  
  "user": "HSL_USER",  
  "userContext": "MANAGER"  
}
```

## 4.4 Get Online Swagger definition

Each HSL application has an operation to generate a Swagger definition which documents the operations and the objects of the HSL service.

This documentation is not only useful to client application developers, but can also be used as the basis for code generation.

The Swagger 2.0 standard is supported by many leading software vendors including Oracle. It is documented on <http://swagger.io>.

The Swagger definition can be retrieved as follows:

- **Error! Hyperlink reference not valid.** `https://server:port/application/api/swagger.json`  
Returns the Swagger definition in JSON format
- `https://server:port/application/api/swagger`  
Returns the Swagger definition in JSON format
- `https://server:port/application/api/swagger.yaml`  
Returns the Swagger definition in YAML format

In the following example we retrieve the online Swagger definition of the POL service running on localhost at port 7094:

```
curl -k -H Accept:application/json --user restuser  
https://localhost:7094/HSL_POL/api/swagger.json
```

The output is a JSON object containing the Swagger definition of the deployed HSL application.

For retrieving the YAML format beware that you specify `x-yaml` in the `-H` argument:

```
curl -k -H Accept:application/x-yaml --user restuser
https://localhost:7094/HSL_POL/api/swagger.yaml
```

#### 4.4.1 Saving the Swagger definition to a file

---

By redirecting the output of the curl command to a file you can use the contents for other purposes like viewing the Swagger definition in an editor.

In the example below we save the online Swagger definition of the POL service running on localhost at port 7094 to a file called 'saved\_swagger.json':

```
curl -k --user restuser -H Accept:application/json
https://localhost:7094/HSL_POL/api/swagger.json >
saved_swagger.json
```

#### 4.4.2 Viewing the Swagger definition

---

The online Swagger editor (<http://editor.swagger.io>) provides a user friendly overview of the Swagger definition.

In the following example we use curl to retrieve the online Swagger editor of the HSL\_POL service and save it to a file. Having opened the saved Swagger definition we then copy its contents into the online Swagger Editor.

Assuming that the HSL\_POL application is running on localhost at port 7094 the following command can be used to save the Swagger definition to 'saved\_swagger.json':

```
curl -k --user restuser -H Accept:application/json
https://localhost:7094/HSL_POL/api/swagger.json >
saved_swagger.json
```

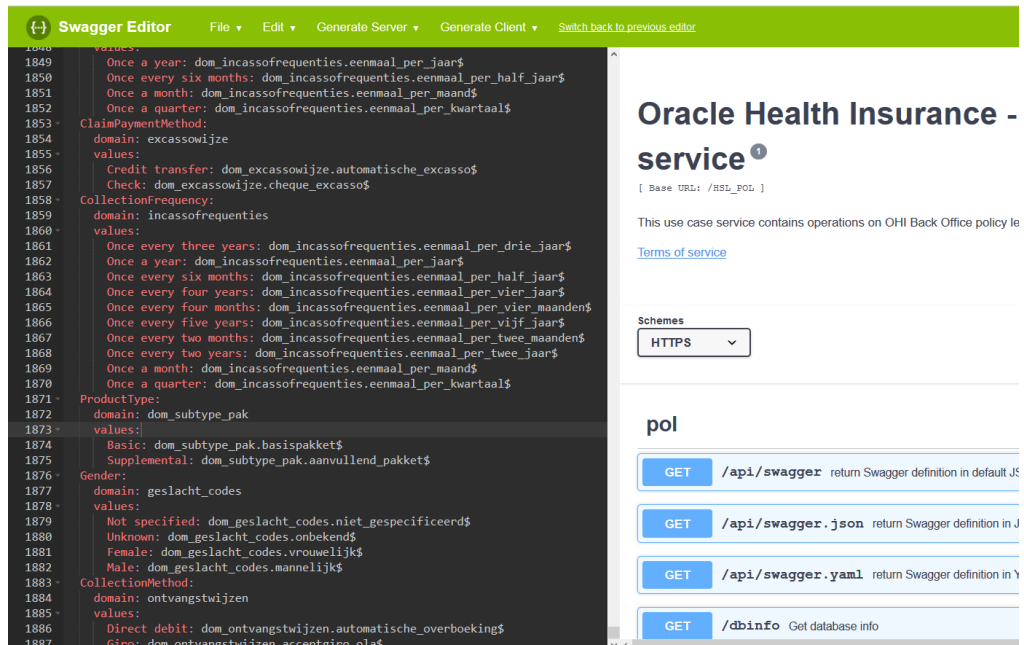
Open 'saved\_swagger.json' in a text editor (or browser) and copy the contents of the entire file.

Open the online Swagger editor by browsing <http://editor.swagger.io>

Use 'File > Clear Editor' to clear the contents of the online editor (if any). Right-click and paste the contents of the saved Swagger definition into the editor.

The screen will look like this:





You can now navigate through the paths, operations and type definitions of the HSL service. More information about Swagger can be found on <http://swagger.io>

## 4.5 Troubleshooting

If the deployment validation fails, first check that the following items have been configured correctly:

- **hsl.properties configuration file**  
This sets the data source for your HSL application.
- **hsl.properties startup parameter**  
This parameter tells the HSL application where to find the hsl.properties file. If the hsl.properties parameter refers to a non-existing file, the HSL application cannot be started by WLS and its state will be 'Failed'.
- **Data source configured in hsl.properties configuration file**  
This data source is used to create the JDBC connection between the HSL application and the OHI BO database
- **HSL database account**  
This account in the OHI BO database has access to the PL/SQL components used by the HSL application.

Troubleshooting tips:

- Edit the hsl.properties file and set 'developermode=true' for your HSL application.
- Restart the managed server for your application.  
Error messages will now be included in the output (normally they are suppressed from the output).
- Reproduce the request with curl. Be sure to use the 'dumpheader' option (-D) to dump the response headers.

The table below may help you to pinpoint the problem:

| HTTP | Message                                                                           | Problem                                                                                     | Action                                                                                                                                                                                 |
|------|-----------------------------------------------------------------------------------|---------------------------------------------------------------------------------------------|----------------------------------------------------------------------------------------------------------------------------------------------------------------------------------------|
|      | WLS Console:<br>java.lang.RuntimeException:<br>Property file could not be loaded. | The configuration file could not be loaded when starting the HSL application.               | Restart application after ensuring that the file referred to by the 'hsl.properties' file exists and can be readable.                                                                  |
| 500  | Unable to resolve 'xyz'                                                           | The jndiname property for this application does not refer to a valid data source            | Examine hsl.properties and ensure that the application's jndiname points to a valid datasource.                                                                                        |
| 500  | ORA-06550:line 1..                                                                | The required HSL objects cannot be accessed by the database user related to the data source | Verify that the data source points to a HSL database account.<br><br>Verify that the HSL database account has access to the HSL objects (see 'Creating a HSL database account' above). |
| 401  | Missing Authentication Scheme                                                     | No WLS user credentials supplied for this request                                           | Add WLS user credentials to the request. The preconfigured WLS user is 'restuser'                                                                                                      |
| 401  | Unauthorized                                                                      | Wrong WLS user credentials. Wrong username and/or password.                                 | Add correct WLS user credentials to the request                                                                                                                                        |
|      |                                                                                   |                                                                                             |                                                                                                                                                                                        |

---

## 5 Configuration files for HSL services

In the previous chapter a properties file was referenced in the web service application server deployment description for which more information is provided below.

### 5.1 Back Office HSL properties file

The location of the Back Office properties file for the HSL services is specified as a start parameter for a Managed Server with:

```
-Dhsl.properties=<filename>
```

This file contains properties to configure the various deployed HSL applications:

- Datasource to connect the HSL application to the OHI database
- Default OHI officer on whose behalf a request is executed
- Logging configuration.  
Note that HSL services use Java Util Logging (JUL). You may find more information about the configuration options of JUL on the internet.

---

#### 5.1.1 hsl.jndiname

The JNDI name of the default data source to connect the HSL application to the OHI database.

Default value: none

Example:

```
hsl.jndiname=HSL_BDDEV1622
```

Note that you must use // for each forward slash in the JNDI name.

Example:

```
hsl.jndiname=jdbc//DSVOHI
```

---

#### 5.1.2 hsl.<app>.jndiname

The JNDI name of the data source to connect this HSL application to the OHI database.

If not set, this value defaults to the value of the `hsl.jndiname` property

Setting `hsl.<app>.jndiname` allows you to use different datasources for different HSL applications. A different datasource may connect to the same database using a different account, or to a different database altogether.

As an example, you may want to use `HSL_PRD` for the REL service and `HSL_RO` ('read only') for the POL service to avoid changes to the policies in the production database.

Note that you must use // for each forward slash in the JNDI name.

Example:

```
hsl.rel.jndiname=HSL_BDDEV1622
```

### 5.1.3 hsl.usercontext

---

The OHI officer on whose behalf a request is executed.

The user context is inserted in the call context which is included in the call to the PL/SQL implementation procedure. Note that the PL/SQL implementation may set a different OHI officer based on the request data.

### 5.1.4 hsl.<app>.usercontext

---

The OHI officer on whose behalf a request is executed for this application.

If not set, this value defaults to the value of the `hsl.usercontext` property

Setting `hsl.<app>.usercontext` allows you to set an OHI officer per HSL application.

Example:

```
hsl.rel.usercontext=MANAGER
```

Note that the user context from the `hsl.properties` file may be overwritten at the HSL application level. This should be documented in the functional specification(s) which apply to the given HSL application.

### 5.1.5 hsl.developermode

---

For security reasons, a response for a failed request contains minimal information so that potential hackers cannot use this information to misuse the HSL services. The original error message is written to the log file and replaced with 'Non-disclosed'.

If `hsl.developermode` is set to 'true', the response for a failed request contains the original error message.

Note that in production mode it is strongly advised to delete the `hsl.developermode` property from the `hsl.properties` file.

See [Doc\[2\]](#) ('Error Handling') for the differences in error handling between developer mode and non-developer mode.

### 5.1.6 hsl.<app>.developermode

---

The developer mode setting for this HSL application.

If not set, this value defaults to the value of the `hsl.developermode` property

### 5.1.7 hsl.<app>.logfile

---

The logfile for this HSL application.

Default value: `hsl.<app>.log` in the WLS domain directory.

Note:

- the directory referenced in `hsl.<app>.logfile` must exist
- the directory referenced in `hsl.<app>.logfile` must be writable to the OS user running the WLS application server.

Example:

```
hsl.rel logfile=/home/oracle/hsl.rel.log
```

### 5.1.8 hsl.<app>.loglevel

---

The severity level of which logging should be written.

Default value: SEVERE

Logging levels: SEVERE, WARNING, INFO, CONFIG, FINE, FINER or FINEST.

The following logging levels are currently used: SEVERE, FINE, FINER and FINEST. The logging levels FINE, FINER and FINEST should only be used for debugging.

Example:

```
hsl.rel.loglevel=SEVERE
```



**WARNING:** When setting the loglevel to FINE, FINER or FINEST this may lead to extensive log messages being recorded which can slow down the processing of service requests considerably. Response times measured while using such detailed log levels are clearly influenced and should not be considered as representative for regular use.

### 5.1.9 hsl.<app>.log.limit

---

The maximum size of the log file in bytes.

Default value: 1000000 (1Mb)

When the size of the log file reaches this limit, the log is rolled over to the next log file.

Note that a value of 0 means 'unlimited'.

Example:

```
hsl.rel.limit=5000000
```

### 5.1.10 hsl.<app>.log.count

---

The number of log files to use in the log file rotation.

Default value: 1

A value of 1 means that only 1 log file is created and no log rotation takes place. When the log.limit is reached, the log file is overwritten and its previous contents are lost.

Set the log.count to 2 or higher to avoid overwriting the log file once it is full.

Example

```
hsl.rel.count=2
```

### 5.1.11 hsl.<app>.log.append

---

Configure if logging can be appended to existing log files.

Default value: true

If false, a new log file will be created when rotating log files.

Example:

```
hsl.rel.append=false
```

---

### 5.1.12 Activating changes to hsl.properties

---

To activate changes to hsl.properties you must restart the managed server.  
If the HSL applications are deployed only to the AdminServer, you need to restart the AdminServer.

---

### 5.1.13 Troubleshooting hsl.properties

---

Note the following if you have trouble starting up with a new hsl.properties file:

- an empty value for ANY property will block any HSL application from starting up.  
Example:  
`hsl.rel.jndiname=`
- lines starting with '#' are ignored.
- empty lines are ignored
- do not use whitespace characters in property lines. Whitespace characters are tabs and spaces. Inserting whitespace characters may induce a malfunction in the operation of HSL services.

---

### 5.1.14 Example hsl.properties file

---

The following properties file is for documentation purposes only, it needs to be adjusted to your situation and requirements.

With the release of version 10.17.2.2.0 of OHI Back Office the four services below may be used in your properties file.

```
hsl.cla.jndiname=jdbc//DSVOHI
hsl.cla.usercontext=manager
# The name of the logfile for logging messages
hsl.cla.logfile=/u01/app/oracle/product/OHI/vohi/HSL_CLA.log
# SEVERE, WARNING, INFO, CONFIG, FINE, FINER, FINEST, OFF, ALL
hsl.cla.loglevel=SEVERE
hsl.cla.log.limit=1000000
hsl.cla.log.count=2
hsl.cla.log.append=true
```

```
hsl.pol.jndiname=jdbc//DSVOHI
hsl.pol.usercontext=manager
# The name of the logfile for logging messages
hsl.pol.logfile=/u01/app/oracle/product/OHI/vohi/HSL_POL.log
# SEVERE, WARNING, INFO, CONFIG, FINE, FINER, FINEST, OFF, ALL
hsl.pol.loglevel=SEVERE
hsl.pol.log.limit=1000000
hsl.pol.log.count=2
hsl.pol.log.append=true
```

```
hsl.rel.jndiname=jdbc//DSVOHI
hsl.rel.usercontext=manager
# The name of the logfile for logging messages
hsl.rel.logfile=/u01/app/oracle/product/OHI/vohi/HSL_REL.log
# SEVERE, WARNING, INFO, CONFIG, FINE, FINER, FINEST, OFF, ALL
hsl.rel.loglevel=FINEST
hsl.rel.log.limit=1000000
hsl.rel.log.count=2
hsl.rel.log.append=true
```

```

hsl.c2b.jndiname=jdbc//DSVOHI
hsl.c2b.usercontext=manager
# The name of the logfile for logging messages
hsl.c2b.logfile=/u01/app/oracle/product/OHI/vohi/HSL_C2B.log
# SEVERE, WARNING, INFO, CONFIG, FINE, FINER, FINEST, OFF, ALL
hsl.c2b.loglevel=FINEST
hsl.c2b.log.limit=1000000
hsl.c2b.log.count=2
hsl.c2b.log.append=true

```

### 5.1.15 Keeping hsl.properties up to date

---

As new HSL services are released through (patch) releases of OHI Back Office, you will be notified to change the hsl.properties file if required through the means of installation instructions. When a new version of this manual is released the example properties file of the previous paragraph will be adjusted.

## 5.2 Examining the Log File

When encountering long-running HSL operations, examining the log file allows you to break down the roundtrip into different components.

Ensure that the log level for the HSL application is set to FINE.

If the log level is set to FINEST, writing log messages alone may require significant time and may account for much of the time spent in the HSL operation.

If you changed the log level you must restart the managed application server to activate the new log properties.

Next, look up the long-running operation in the log file. The example shows log messages of a fictitious operation:

```

Mar 08, 2018 5:09:39 PM com.oracle.insurance.ohibo.hpo.HpoService
getDossierRegels
FINE: begin getDossierRegels
Mar 08, 2018 5:09:39 PM com.oracle.insurance.ohibo.hpo.HpoService getLanguage
FINE: getLanguage() returns: nl-NL
Mar 08, 2018 5:09:39 PM com.oracle.insurance.ohibo.hpo.HpoService
getDossierRegels
FINE: expand=all
Mar 08, 2018 5:09:39 PM com.oracle.insurance.ohibo.hpo.HpoService
getDossierRegels
FINE: limit=10000
Mar 08, 2018 5:09:39 PM com.oracle.insurance.ohibo.hpo.HpoService
getDossierRegels
FINE: number=35
Mar 08, 2018 5:09:39 PM com.oracle.insurance.ohibo.hpo.HpoService
getDossierRegels
FINE: offset=0
Mar 08, 2018 5:09:39 PM com.oracle.insurance.ohibo.hpo.CCallContext
toJDBCObject
FINE: enter toJDBCObject
Mar 08, 2018 5:09:40 PM com.oracle.insurance.ohibo.hpo.CCallContext
toJDBCObject
FINE: leave toJDBCObject
Mar 08, 2018 5:09:41 PM com.oracle.insurance.ohibo.hpo.HpoService
getDossierRegels
FINE: Before calling PL/SQL operation
Mar 08, 2018 5:09:59 PM com.oracle.insurance.ohibo.hpo.HpoService
getDossierRegels
FINE: After calling PL/SQL operation
Mar 08, 2018 5:10:00 PM com.oracle.insurance.ohibo.exception.ExceptionUtil
handleReturnContext
FINE: start handleReturnContext
Mar 08, 2018 5:10:00 PM com.oracle.insurance.ohibo.exception.ExceptionUtil
handleReturnContext
FINE: end handleReturnContext
Mar 08, 2018 5:10:00 PM com.oracle.insurance.ohibo.hpo.HpoService
getDossierRegels
FINE: Before mapping SQL object to Java object
Mar 08, 2018 5:10:21 PM com.oracle.insurance.ohibo.hpo.HpoService
getDossierRegels
FINE: After mapping SQL object to Java object
Mar 08, 2018 5:10:21 PM com.oracle.insurance.ohibo.hpo.HpoService
getDossierRegels

```

```

FINE: http code=200
Mar 08, 2018 5:10:21 PM com.oracle.insurance.ohibo.hpo.HpoService
getDossierRegels
FINE: Before creating response
Mar 08, 2018 5:10:22 PM com.oracle.insurance.ohibo.hpo.HpoService
getDossierRegels
FINE: After creating response
Mar 08, 2018 5:10:22 PM com.oracle.insurance.ohibo.hpo.HpoService
getDossierRegels
FINE: end getDossierRegels

```

From this fragment we may derive the following information:

- Total roundtrip is about 43s
- PL/SQL execution: 18s
- Mapping SQL object to Java object:<1s
- Creating response with JSON string:<1s

## 5.2.1 Changing the log format

---

The default format for logging timestamps is not suitable for sub-second operations. Logging timestamps in milliseconds since 01-01-1970 is needed if you want to analyse sub-second operations.

To override the default format, create a configuration file with the following contents:

```

# override default format for timestamps in milliseconds since 01-01-1970.
java.util.logging.SimpleFormatter.format=%1$tQ %2$s%n%4$s: %5$s%6$s%n

```

You now need to activate this configuration for the managed server to which the HSL application is deployed:

- Start WebLogic Console
- Choose Environments > Servers > *managed\_server*
- Add `-Djava.util.logging.config.file=your_config_file` to the Server Start parameters.
- Save and restart managed server.
- Call HSL operation and check that the subsequent log messages show log messages in milliseconds since 01-01-1970

The output should now look like:

```

1520867075960 com.oracle.insurance.ohibo.hpo.HpoService getDossierRegels
FINE: begin getDossierRegels
1520867075971 com.oracle.insurance.ohibo.hpo.HpoService getLanguage
FINE: getLanguage() returns: nl-NL
1520867075974 com.oracle.insurance.ohibo.hpo.HpoService getDossierRegels
FINE: expand=all
1520867075974 com.oracle.insurance.ohibo.hpo.HpoService getDossierRegels
FINE: limit=10000
1520867075975 com.oracle.insurance.ohibo.hpo.HpoService getDossierRegels
FINE: number=11
1520867075975 com.oracle.insurance.ohibo.hpo.HpoService getDossierRegels
FINE: offset=0
1520867075976 com.oracle.insurance.ohibo.hpo.CCallContext toJDBCObject
FINE: enter toJDBCObject
1520867075977 com.oracle.insurance.ohibo.hpo.CCallContext toJDBCObject
FINE: leave toJDBCObject
1520867075978 com.oracle.insurance.ohibo.hpo.HpoService getDossierRegels
FINE: Before calling PL/SQL operation
1520867092723 com.oracle.insurance.ohibo.hpo.HpoService getDossierRegels
FINE: After calling PL/SQL operation
1520867092728 com.oracle.insurance.ohibo.exception.ExceptionUtil

```



```
handleReturnContext
FINE: start handleReturnContext
1520867092729 com.oracle.insurance.ohibo.exception.ExceptionUtil
handleReturnContext
FINE: end handleReturnContext
1520867092730 com.oracle.insurance.ohibo.hpo.HpoService getDossierRegels
FINE: Before mapping SQL object to Java object
1520867093066 com.oracle.insurance.ohibo.hpo.HpoService getDossierRegels
FINE: After mapping SQL object to Java object
1520867093068 com.oracle.insurance.ohibo.hpo.HpoService getDossierRegels
FINE: http code=200
1520867093072 com.oracle.insurance.ohibo.hpo.HpoService getDossierRegels
FINE: Before creating response
1520867093073 com.oracle.insurance.ohibo.hpo.HpoService getDossierRegels
FINE: After creating response
1520867093074 com.oracle.insurance.ohibo.hpo.HpoService getDossierRegels
FINE: end getDossierRegels
```

This log output of a fictitious operation gives us the following information:

- Total roundtrip is 17114ms
- PL/SQL execution: 16745ms
- Mapping SQL object to Java object:336ms
- Creating response with JSON string:1ms

## 6 Upgrading HSL services

Future OHI releases may include new WAR files for HSL services.

To deploy a new version of an existing HSL application, follow the steps below:

- ✓ Check your web service properties file (typically `hsl.properties`) and implement necessary changes for your release. For information about the contents please see the previous chapter.
- ✓ Logon to the Admin Server console of the domain where the web services are deployed.
- ✓ Navigate to the deployments pane.
- ✓ Choose the 'Lock & Edit' option.
- ✓ If you already have a Retired version of the deployment, mark the check box in front of the retired deployment and delete it.
- ✓ Navigate to the deployment that must be updated and mark the check box in front of it.
- ✓ Press the Update button.
- ✓ Determine whether the same source path still applies (typically a new version is delivered in the `$OZG_BASE/java` folder of your environment but your organisation may have additional distribution methods implemented). When the correct `.war` file is selected press Next.
- ✓ You now have two options for 'retiring' the previous version. Because normally the Back Office application is not available during patching, you can retire the previous version 'immediately', meaning using a timeout of 1 second:

How would you like to retire the previous version of this application?

Allow the application to finish its current sessions and then retire.

Retire the previous version after retire timeout.

Retire timeout (seconds):

Press 'Finish' to retire the previous version and continue.

- ✓ Choose 'Activate Changes'.
- ✓ Refresh the screen a few seconds after having activated the changes.
- ✓ Inform the communities which use the web services of the availability and publish the latest URI's to the swagger definitions to them.

If the old deployment cannot be deleted when updating, stop the deployment with the 'Force' option and deploy it again completely (using the 'install' option for deployments). In some cases (depending on the changes) you may need to repeat the Deployment delete/install when the install results in errors. If the deployment keeps failing, you may have to restart the Managed Server(s) as a last resort.

After this the deployment state of the web services should be Active again (be sure the Managed Server(s) is/are running, otherwise start it/them to get this result).

If not, check whether your OHI database environment and deployed version are correct, meaning that their version levels correspond with each other.



## 7 Appendix A – Service Information

The following URI provides version information about a running HSL application:

```
https://server:port/application/dbinfo
```

For example:

```
https://localhost:7002/HSL\_POL/dbinfo
```

This will return a JSON object like below:

```
{
  "basePath": "https://localhost:7002/HSL_POL/pol",
  "database": "BTSPC12",
  "instance": "CDB02",
  "jndiName": "HSL_BTSPC12",
  "plsSqlPackage": "hsl_pol_sp_pck $Revision: 4.39 $",
  "user": "HSL_USER",
  "userContext": "MANAGER"
}
```

Information:

- **basePath**  
Format: `https://server:port/application/context`  
This is the base URI for all operations in this service.
- **database**  
The name of the database associated with the current database connection
- **instance**  
Instance name of the database associated with the current database connection.
- **jndiName**  
The JNDI name of the database connection (specified in the `hsl.properties` file)
- **plsSqlPackage**  
The PL/SQL package which implements the operations of the HSL service.  
In this release, the revision number refers to the revision number of the code template used to generate the PL/SQL package. In a future release this will point to the minimum revision number of the compiled PL/SQL package.
- **user**  
The database account used to log on to the database.
- **user context**  
The default OHI officer on whose behalf service operations are performed, as specified in the `hsl.properties` file.

---

## 8 Appendix B – Removing a WLS domain

In case you want to restructure your environment or recreate a domain you can remove an existing domain.

In order to do this make sure all servers for the domain are stopped and make sure there is no Node Manager process running which 'guards' this domain.

Next perform the following actions:

- ✓ Completely remove your domain directory including all contents.
- ✓ Remove any reference in start and stop scripts to this domain.
- ✓ Remove, if present, the domain from the <WebLogic home>\oracle\_common\common\nodemanager\nodemanager.domains.
- ✓ Remove the domain from the domain-registry.xml file which is located in the Middleware home folder (where your WebLogic home folder resides in).

For more information please use the standard WebLogic documentation.

## 9 Appendix C – Testing with SoapUI

SoapUI is a tool for testing web services which can be downloaded from <http://www.soapui.org>.

It is especially useful for functional testing of the HSL application.

WLS 12c has removed the support for the security protocols SSLv3 and TLS 1.1, because they are now considered insecure.

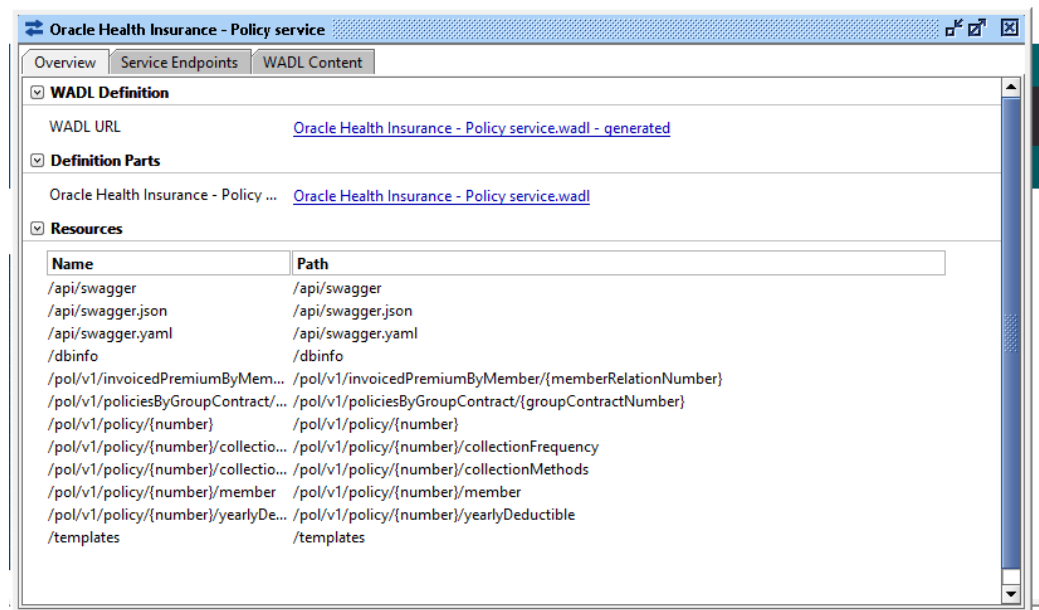
This means you must access the HSL application with a client that uses TLS 1.2.

Unlike earlier versions, SoapUI 5.4 enables TLS 1.2 by default. The examples below assume SoapUI 5.4 or higher.

### 9.1 Create REST project and import Swagger definition

- Follow the instructions in ‘Get Online Swagger Definition (curl)’ to retrieve the online Swagger definition from the HSL application and save the output to a file (for example ‘saved\_swagger.json’)
- Create a new REST project (empty value for URL)
- Choose ‘Project > Import Swagger’ and select the saved Swagger definition.

The operations of the HSL application are now discovered:



You may now create requests for the operations provided by this HSL application.

### 9.2 Create a request

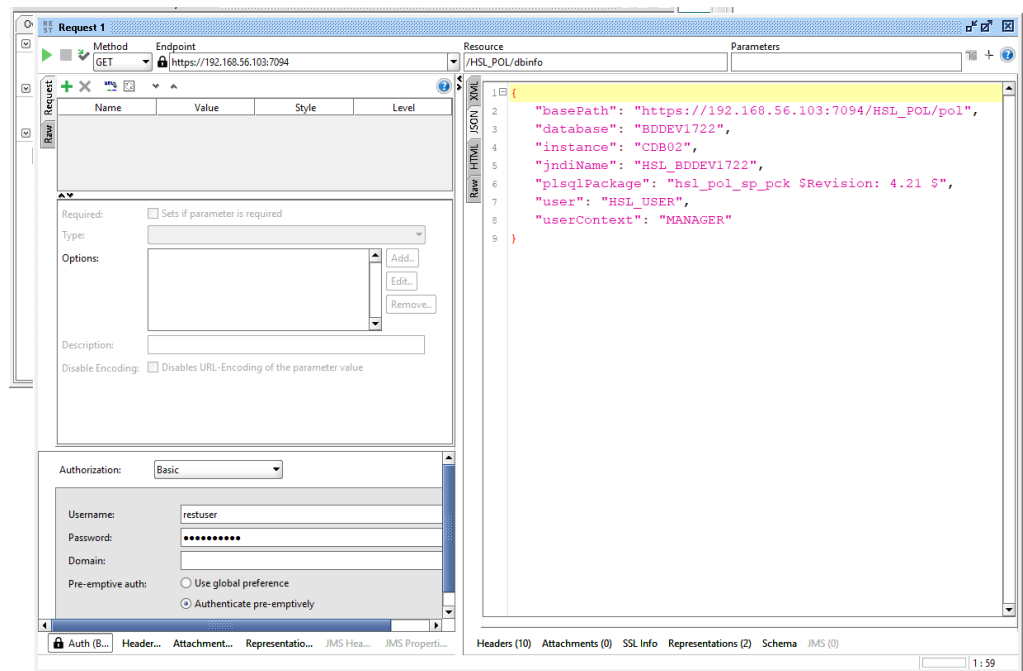
Once you have imported the Swagger definition you may create a request for each of the operations.

In the example below we create a request for the getDatabaseInfo operation:

- Double-click on ‘Request 1’ of the requested operation (in our case /dbinfo > getDatabaseInfo).

- Set the endpoint for the request to `https://<server>:<port>`  
For example <https://192.168.56.103:7094>.
- Select 'Headers' and add a HTTP request header with Header value 'Accept' and with Value value 'application/json'.
- Add other HTTP request headers as required (not needed for this example)
- Select 'Auth' to add Basic Authentication for the WLS user.  
If you deployed with the 'DDOnly' deployment model the WLS user should be 'restuser'.
- Set 'preemptive authentication'.
- Run the request.

The request window should now look like this:





## 10 Appendix D - Generating a WADL file

A WADL (Web Application Description Language) file may be required by Oracle Service Bus or other middleware to describe your HSL application.

The current deployed HSL applications cannot be used to generate WADL files directly.

However a WADL file can be easily generated from the online Swagger definition using SoapUI.

This involves the following steps:

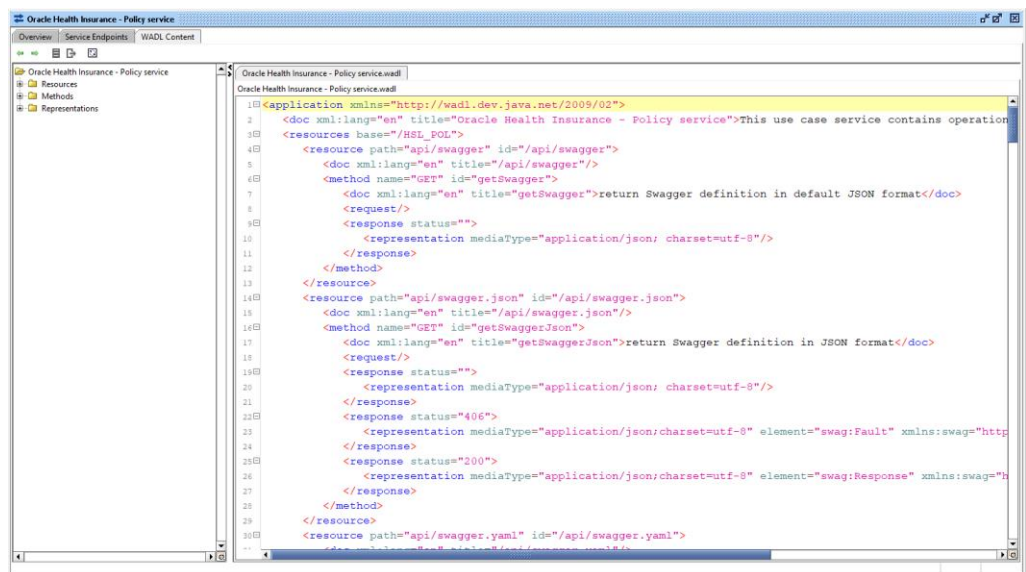
- Create a REST project in SoapUI for your HSL application
- Open the Service Viewer for the REST project
- Export WADL from your REST project

### 10.1 Create a REST project in SoapUI for your HSL application

Follow the instructions in 'Testing with SoapUI' to set up SoapUI for testing with your HSL application.

### 10.2 Open the Service Viewer for the REST Project

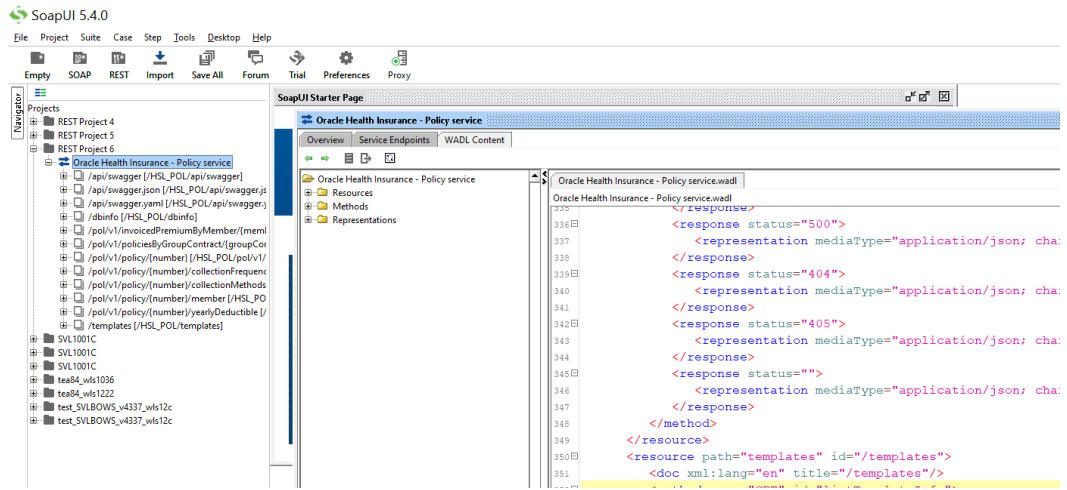
Click on the 'WADL Content' to see the WADL description.  
Your screen may look like this:



### 10.3 Export WADL from your REST project

Save the buffer to a WADL file.

Alternatively you may right-click on the service within the REST project (highlighted in the screen shot below):



And select 'Export WADL' to create the WADL for this application.